

V&V Reference Report

L2 ASCDS Version : 8.4.5

Observation 884 - L2 Version 3
Chandra X-Ray Center

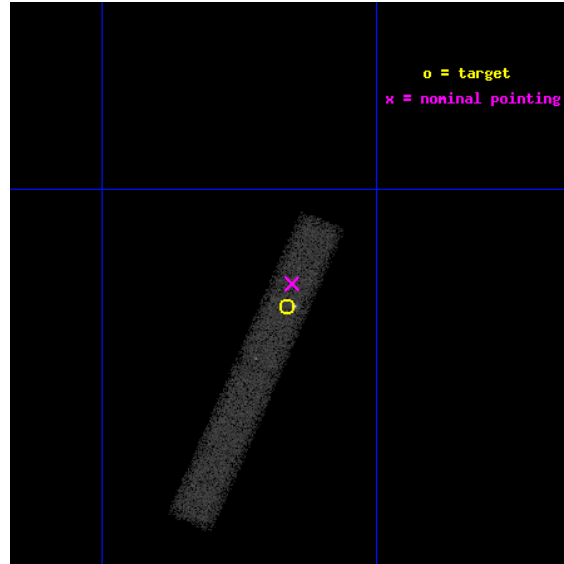
L2 Processing Date : Sep 1 2012

Contents

1	Front	2
2	OBI	3
2.1	OBI	3
2.1.1	Images	3
2.1.2	Bias	3
2.1.3	Parameters	4
2.1.4	Events	4
2.2	Compared Parameters	5
2.3	Aspect	6
2.4	Star Slots	9
2.4.1	Slot 3	9
2.4.2	Slot 4	10
2.4.3	Slot 5	11
2.4.4	Slot 6	12
2.4.5	Slot 7	13
2.5	FID Slots	14
2.5.1	Slot 0	14
2.5.2	Slot 1	15
2.5.3	Slot 2	16
A	Summary	17
A.1	Status	17
A.2	Comments	17

1 Front

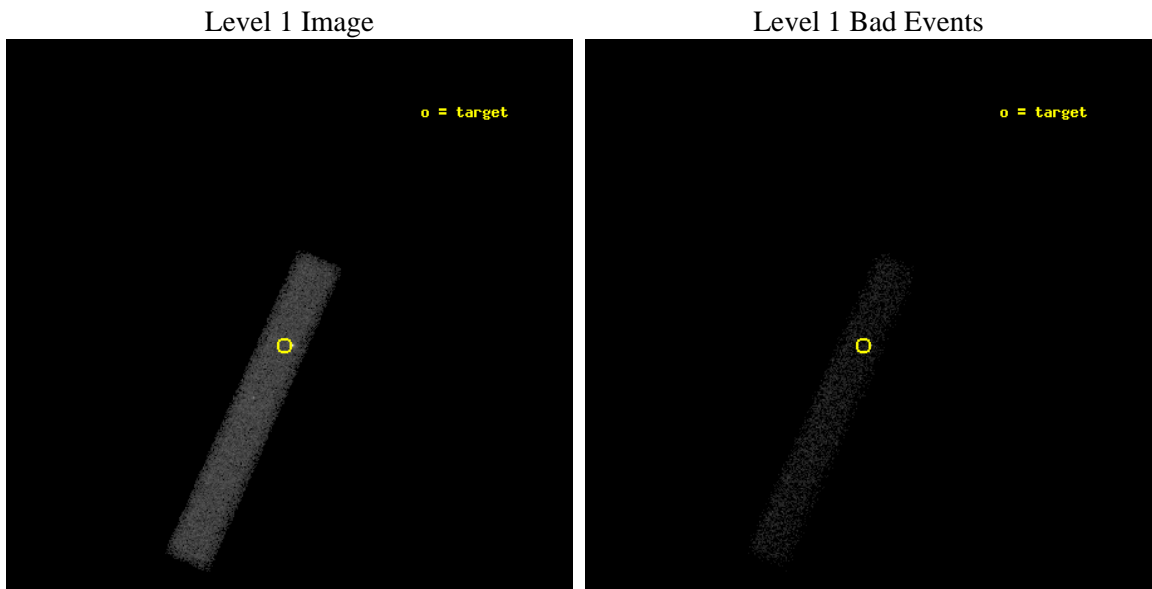
seq_num	700189	Sequence number
obs_id	884	Observation id
title	THE METAL ABUNDANCES IN LOW-REDSHIFT DAMPED LY-ALPHA GALAXIES	Prop
observer	Dr. David Turnshek	Principal investigator
object	0235+164	Source name
dtcycle	0	
cycle	P	events from which exps? Prim/Second/Both
ra_targ	39.66625	Observer's specified target RA [deg]
dec_targ	16.616472	Observer's specified target Dec [deg]
ra_nom	39.663798589874	Nominal RA [deg]
dec_nom	16.626129341693	Nominal Dec [deg]
roll_nom	114.03204901267	Nominal Roll [deg]
revision	3	Processing version of data
ontime	30625.200456351	Sum of GTIs [s]
livetime	27775.440283286	Livetime [s]
ontime7	30625.200456351	Sum of GTIs [s]
l2events	27655	Number of level 2 events



2 OBI

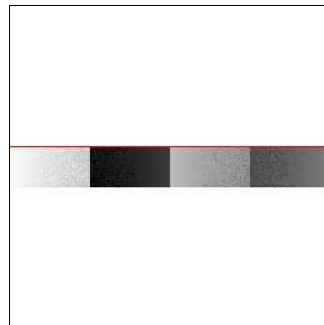
2.1 OBI

2.1.1 Images



2.1.2 Bias

Chip 7



2.1.3 Parameters

obi_num	0	Obi number	sched_exp_time	30000.000000	[s] Scheduled observation exposure time
ascdsver	8.4.5	Processing system revision	ontime	30625.200456351	Sum of GTIs [s]
caldbver	4.5.1.1	 	ontime7	30625.200456351	Sum of GTIs [s]
date	2012-09-01T02:33:30	Date and time of file creation	l1events	44915	Number of level 1 events
revision	3	Processing version of data			

2.1.4 Events

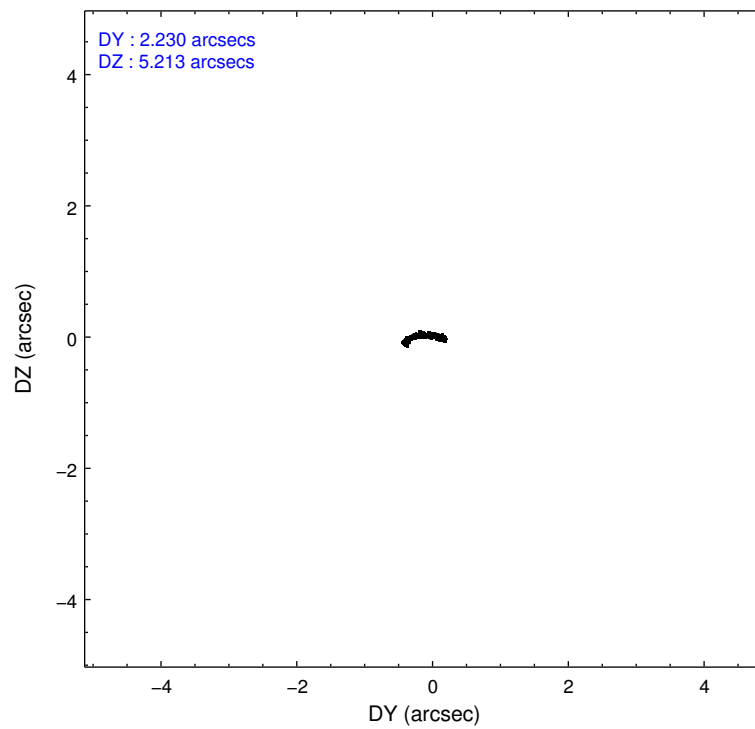
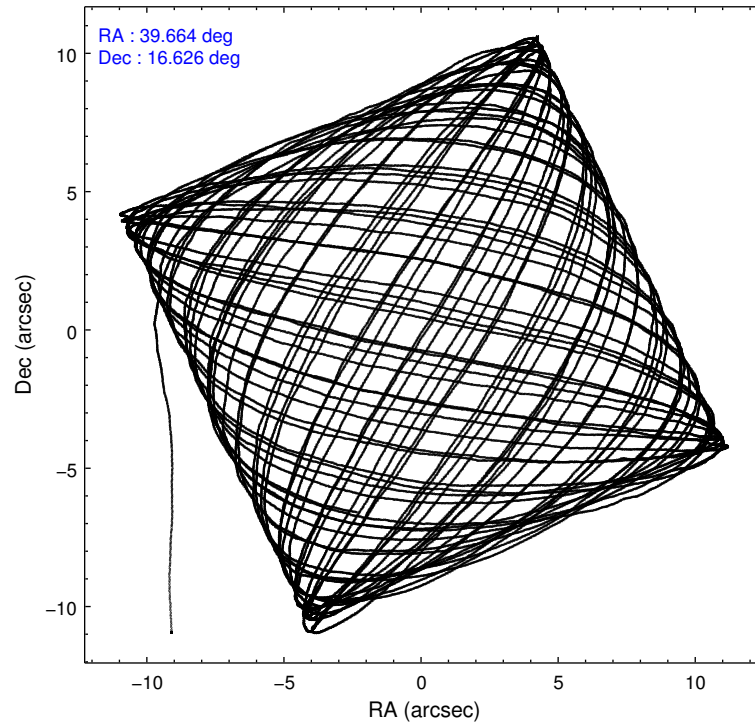
	ccd 7
level 1 events	44915
rejected events	16290
rejected %	36%

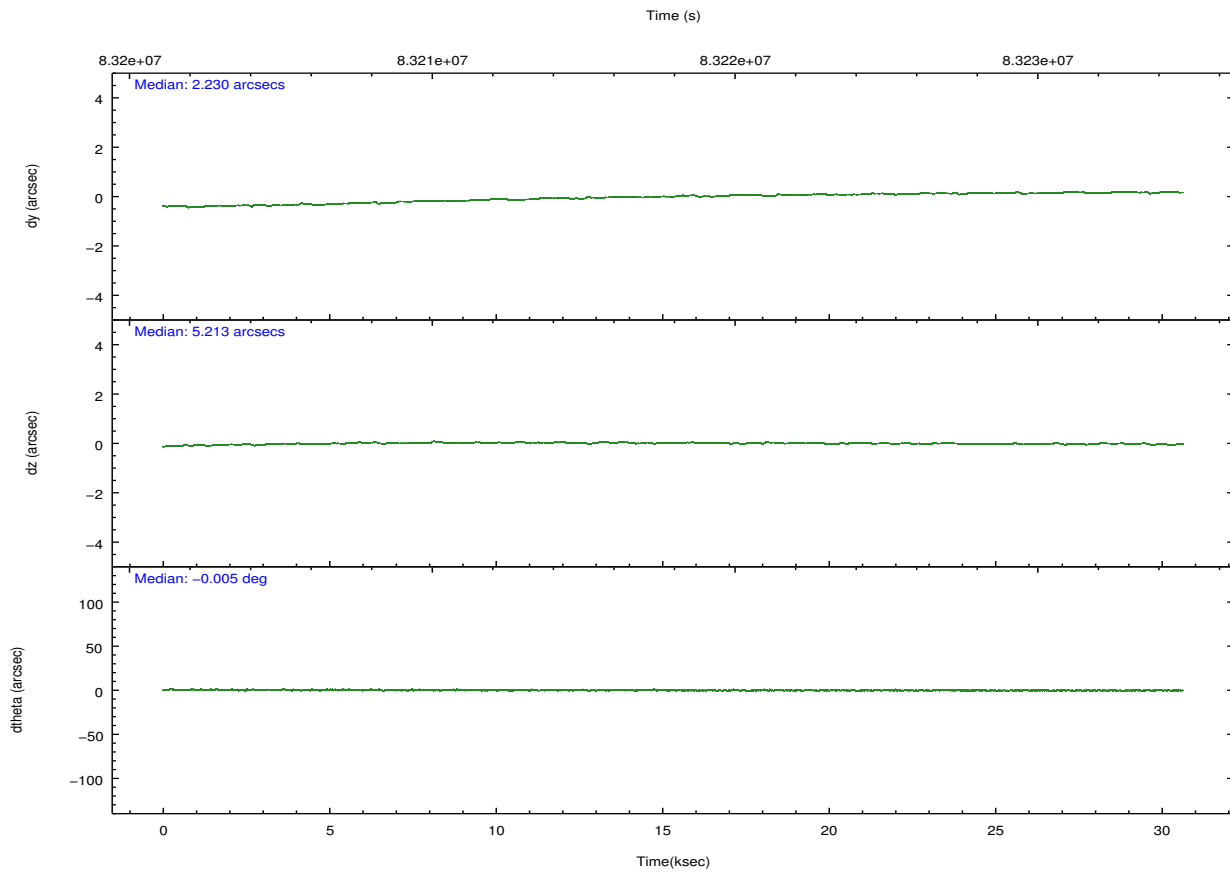
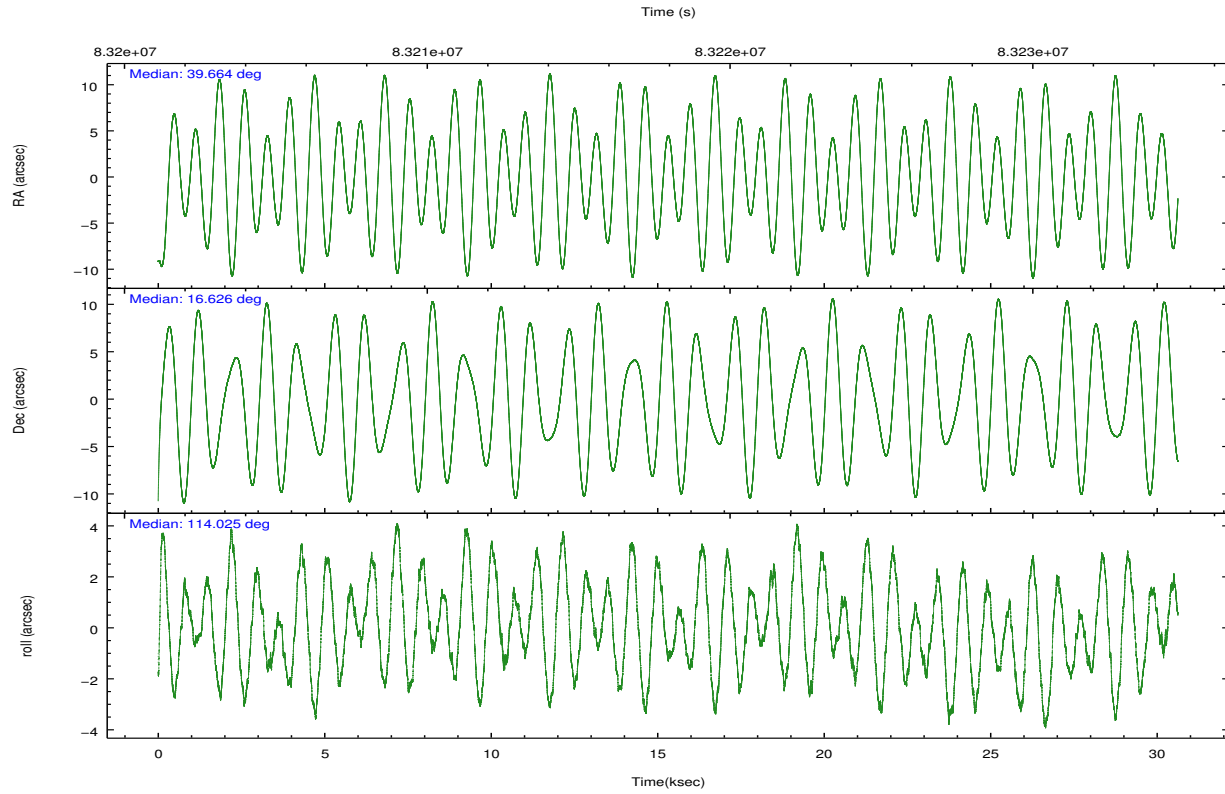
	ccd 7
grade 0 events	4090
	9%
grade 1 events	52
	0%
grade 2 events	5597
	12%
grade 3 events	3274
	7%
grade 4 events	3174
	7%
grade 5 events	2833
	6%
grade 6 events	12591
	28%
grade 7 events	13304
	29%

2.2 Compared Parameters

Parameter	Planned	Actual	Parameter	Planned	Actual
Instrument	ACIS	ACIS	Obspar format version number	7	7
Detector	ACIS-7	ACIS-7	Obspar file type	PREDICTED	ACTUAL
Grating	NONE	NONE	Obspar update status	NONE	UPDATED
Data mode	VFAINT	VFAINT	Number of optional ACIS chips dropped	0	0
Observation mode	POINTING	POINTING	On-chip summing requested	N	N
[deg] Pointing RA	39.687044	39.66379858987421	Subarray requested	CUSTOM	1/8
[deg] Pointing Dec	16.610169	16.62612934169259	Subarray start row	447	447
[deg] Pointing Roll	113.868775	114.0320490126691	Subarray row count	128	128
[mm] SIM focus pos	-0.684267	-0.6828225247311905	Alternating exposures requested	N	N
[mm] SIM defocus	0	0.001444936568705701	[s] Primary exposure time	0.000000	0.4
[mm] SIM translation stage pos	-190.132523	-190.1400660498719			
[mm] SIM translation stage offset	0	0.00754346686406393			
[s] Observation start time (MET)	83203262.184000	83201992.665893			
Observation start date	2000-08-20T23:59:58	2000-08-20T23:39:52			
[s] Observation end time (MET)	83233262.184000	83234585.104615			
Observation end date	2000-08-21T08:19:58	2000-08-21T08:43:05			
Read mode	TIMED	TIMED			

2.3 Aspect



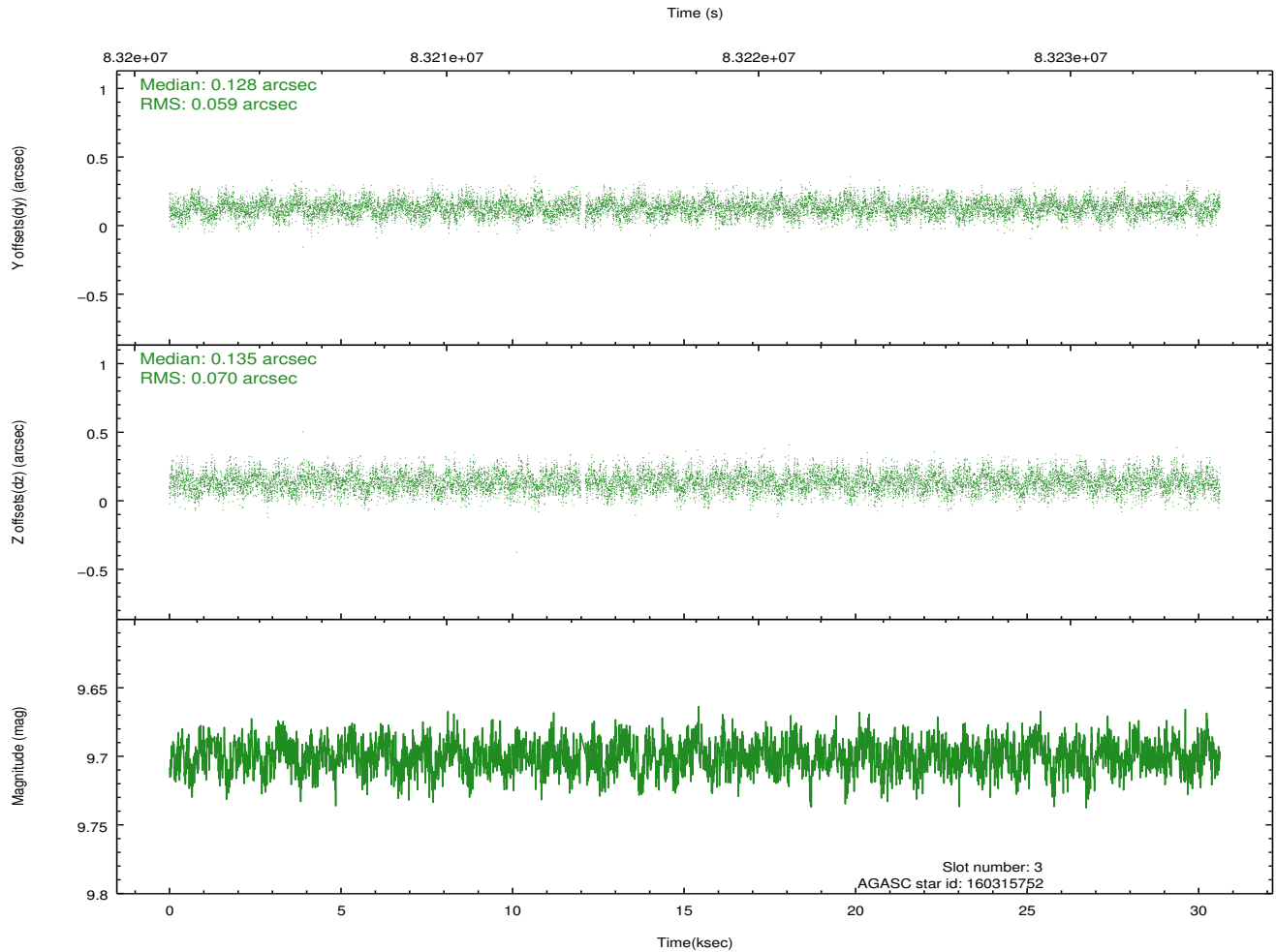
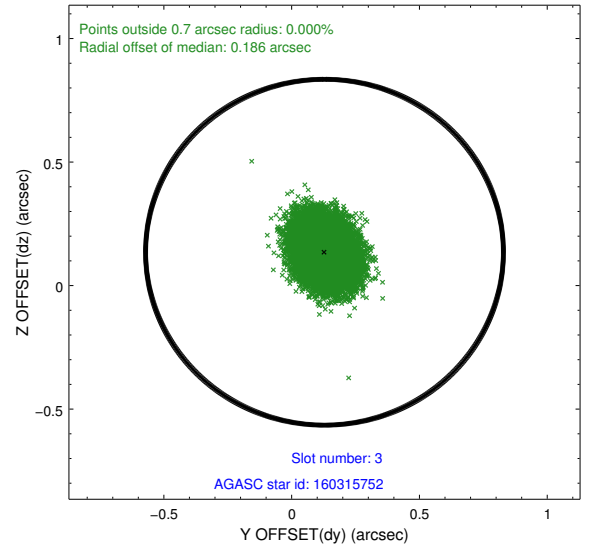
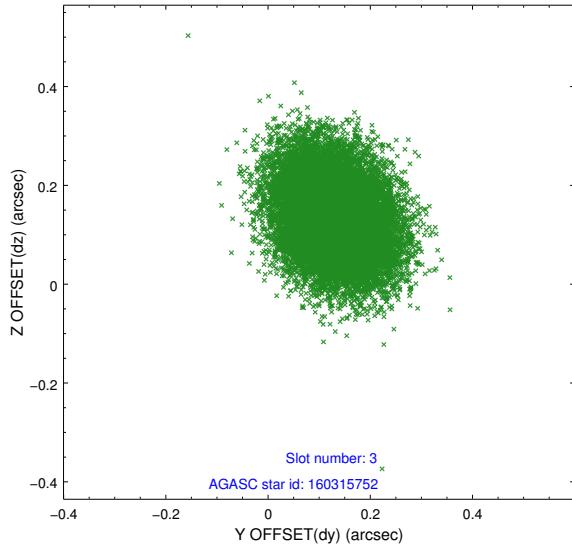


Slot Statistics

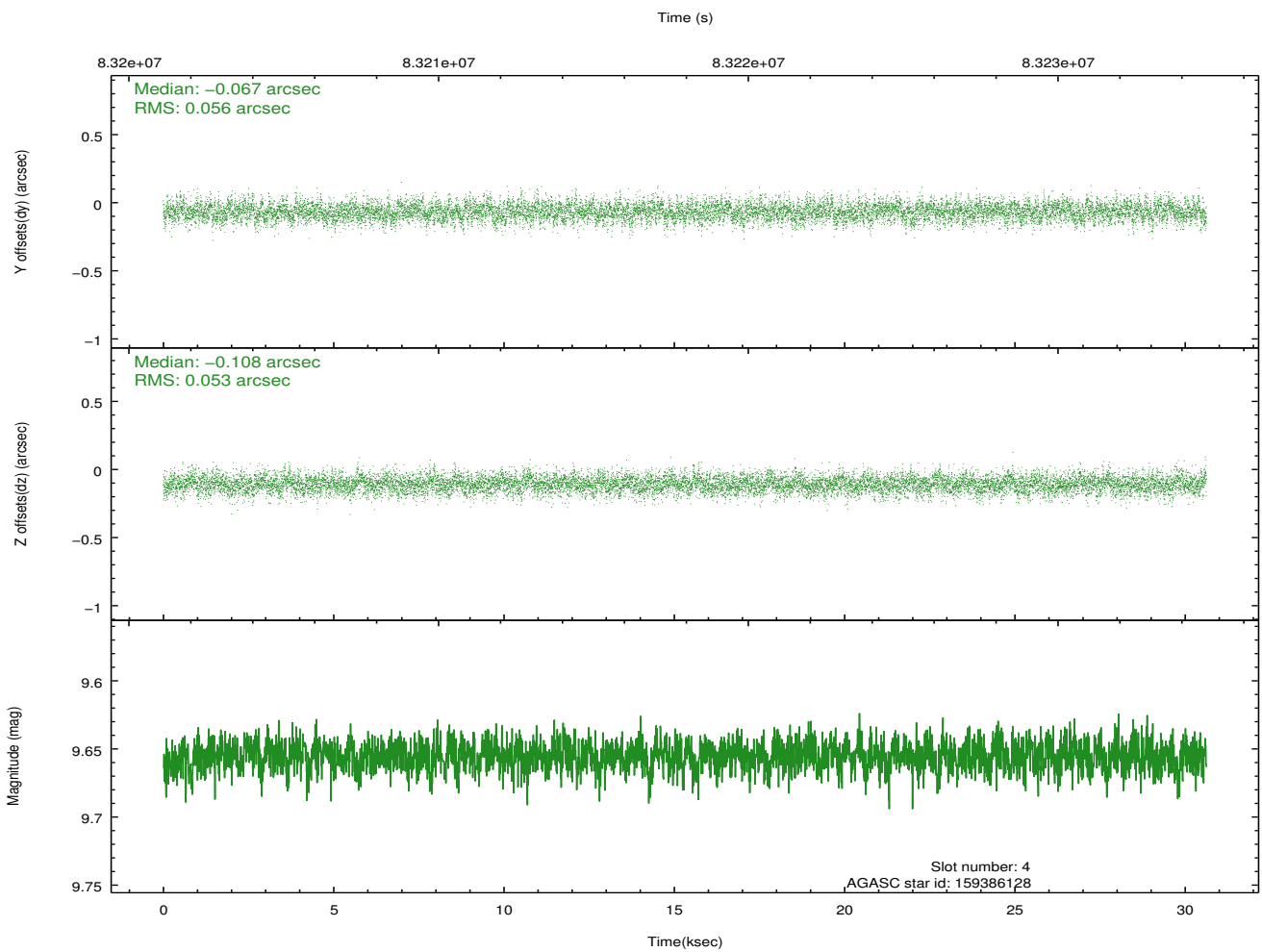
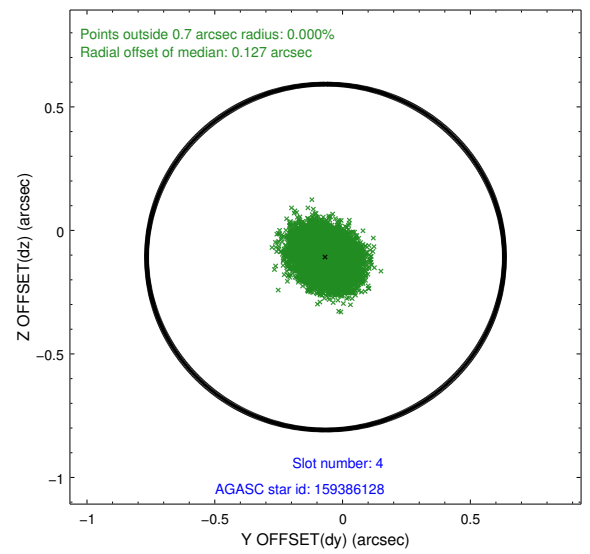
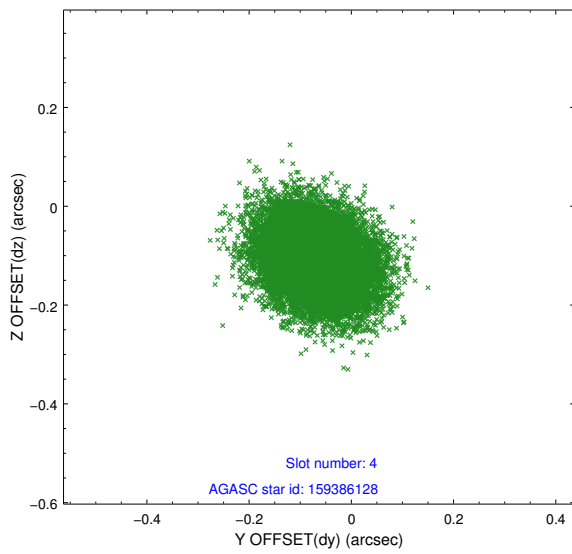
slot	status	id	mag	n_pts	med_dy	med_dz	dr1	dr2	ra	dec	mean_y	mean_z
0	FID	ACIS-S-2	7.11	7470	-0.036	-0.002	0.007	0.011	0.000000	0.000000	-754.81	-1726.34
1	FID	ACIS-S-4	7.21	7470	-0.009	0.018	0.006	0.011	0.000000	0.000000	2158.43	182.13
2	FID	ACIS-S-5	7.24	7470	0.015	-0.008	0.008	0.013	0.000000	0.000000	-1807.54	175.80
3	GUIDE	160315752	9.70	14871	0.128	0.135	0.097	0.158	40.180363	16.596120	-731.51	-1535.95
4	GUIDE	159386128	9.66	14924	-0.067	-0.108	0.082	0.134	39.366038	16.824673	1155.60	699.44
5	GUIDE	160315928	9.75	14931	0.226	0.076	0.101	0.161	40.195099	16.201417	-2052.75	-1011.04
6	GUIDE	159389528	8.13	14934	-0.251	-0.407	0.080	0.117	38.920079	16.612791	1084.47	2414.11
7	GUIDE	160305040	8.93	14938	-0.034	0.301	0.092	0.145	40.407955	16.736008	-585.80	-2456.74

2.4 Star Slots

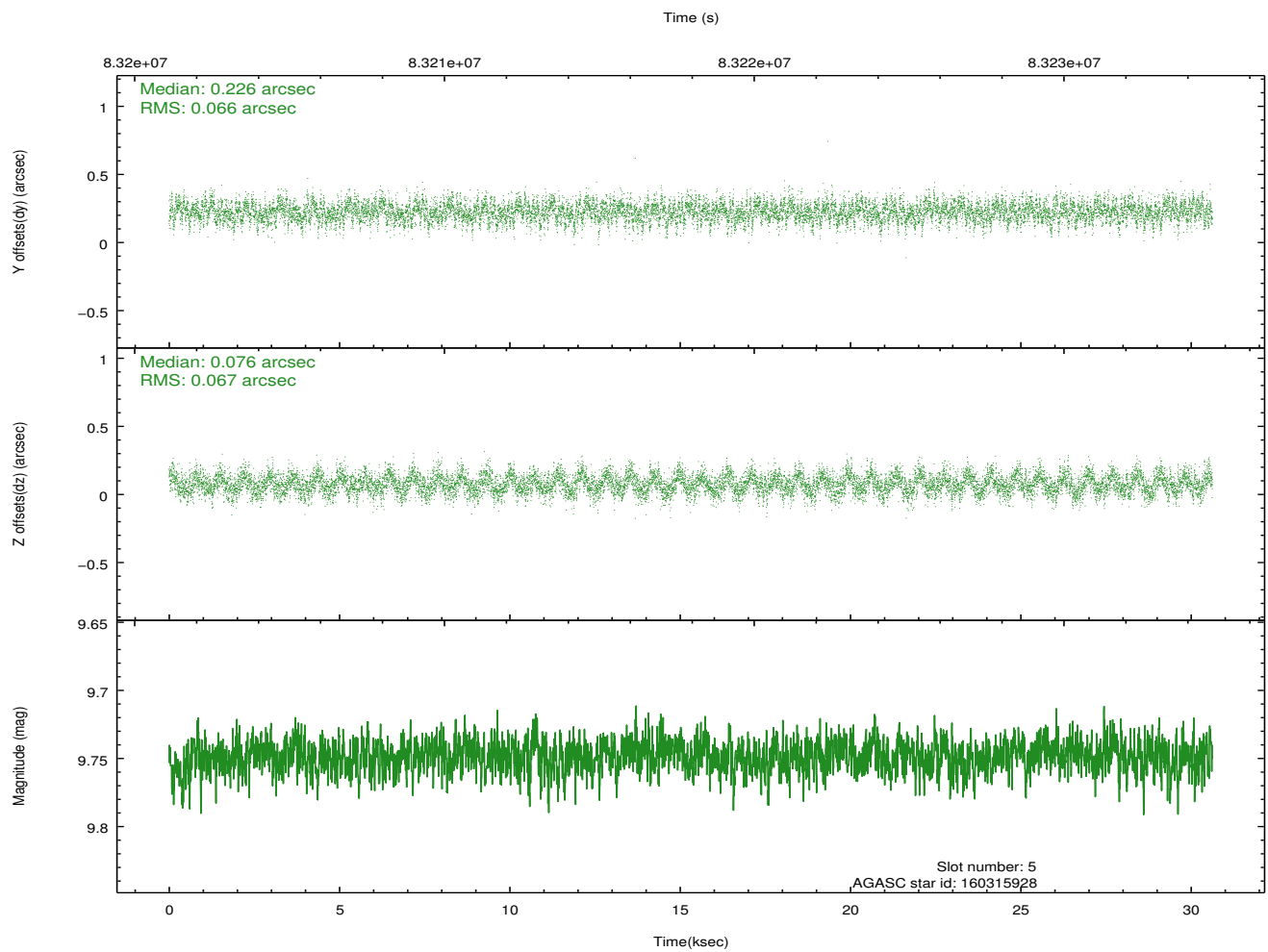
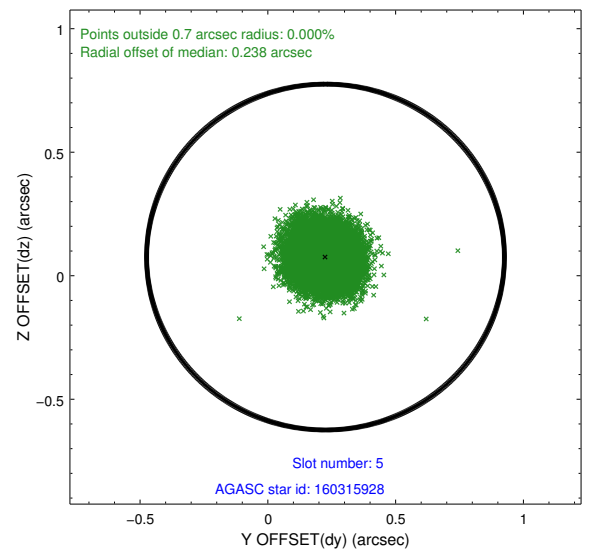
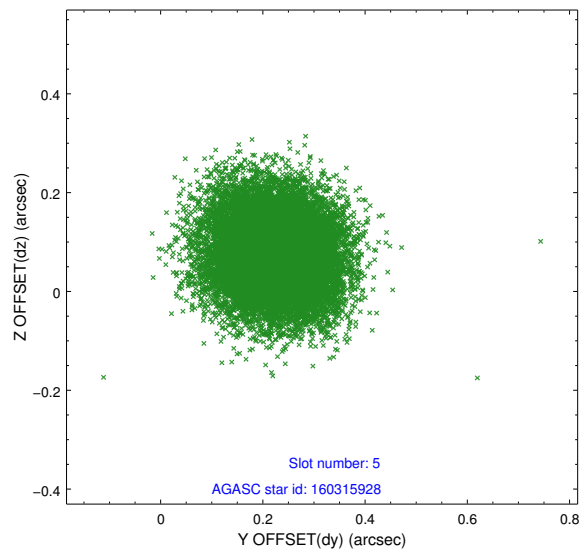
2.4.1 Slot 3



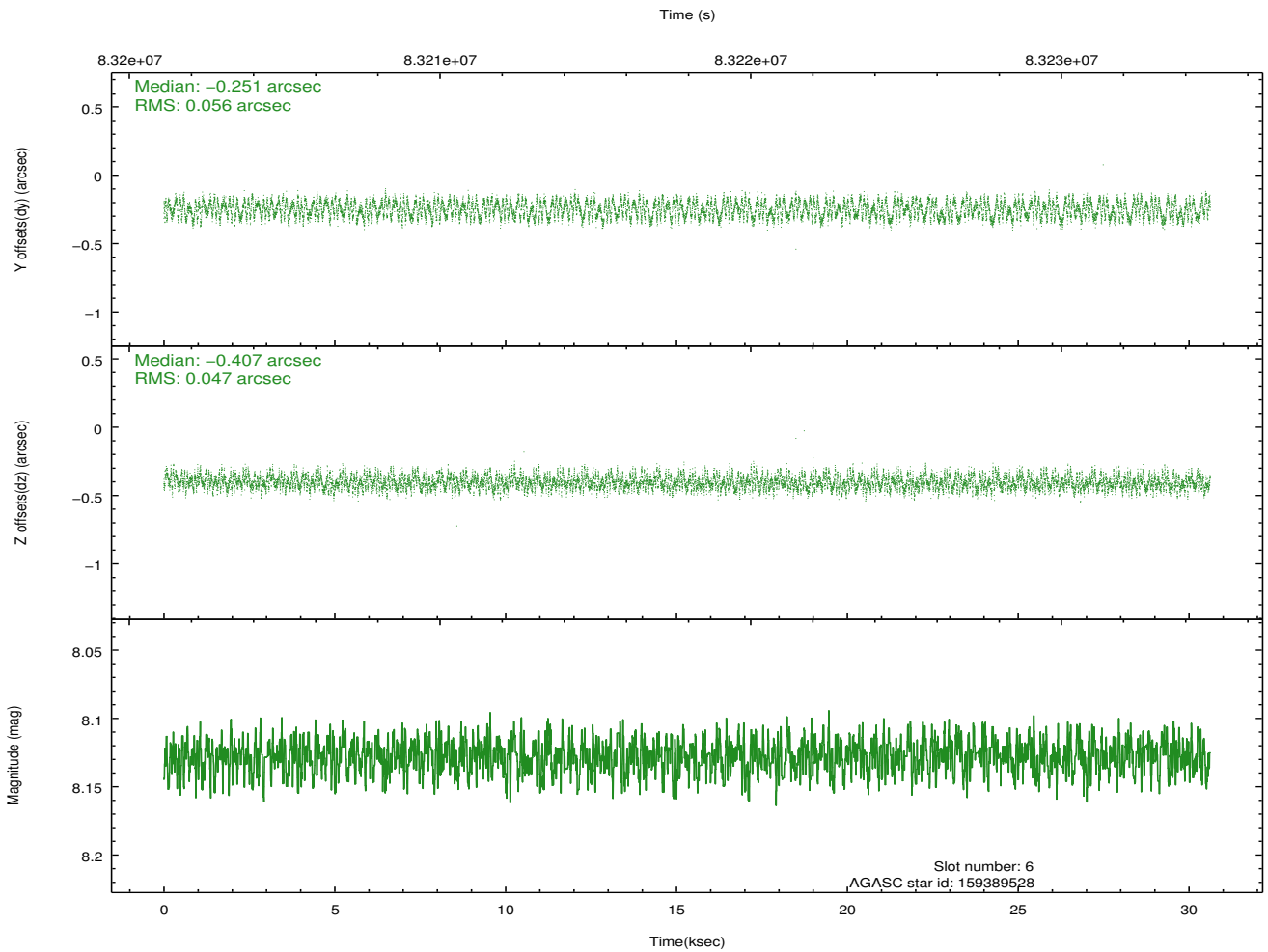
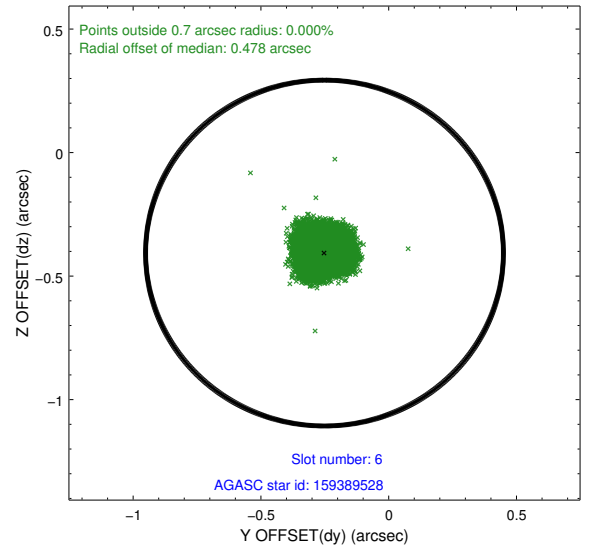
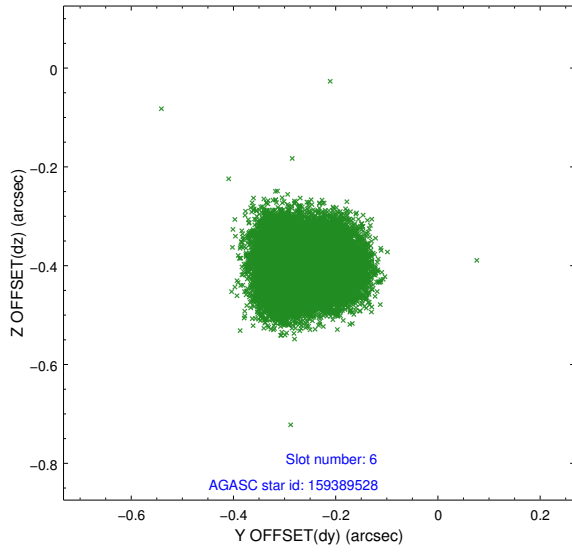
2.4.2 Slot 4



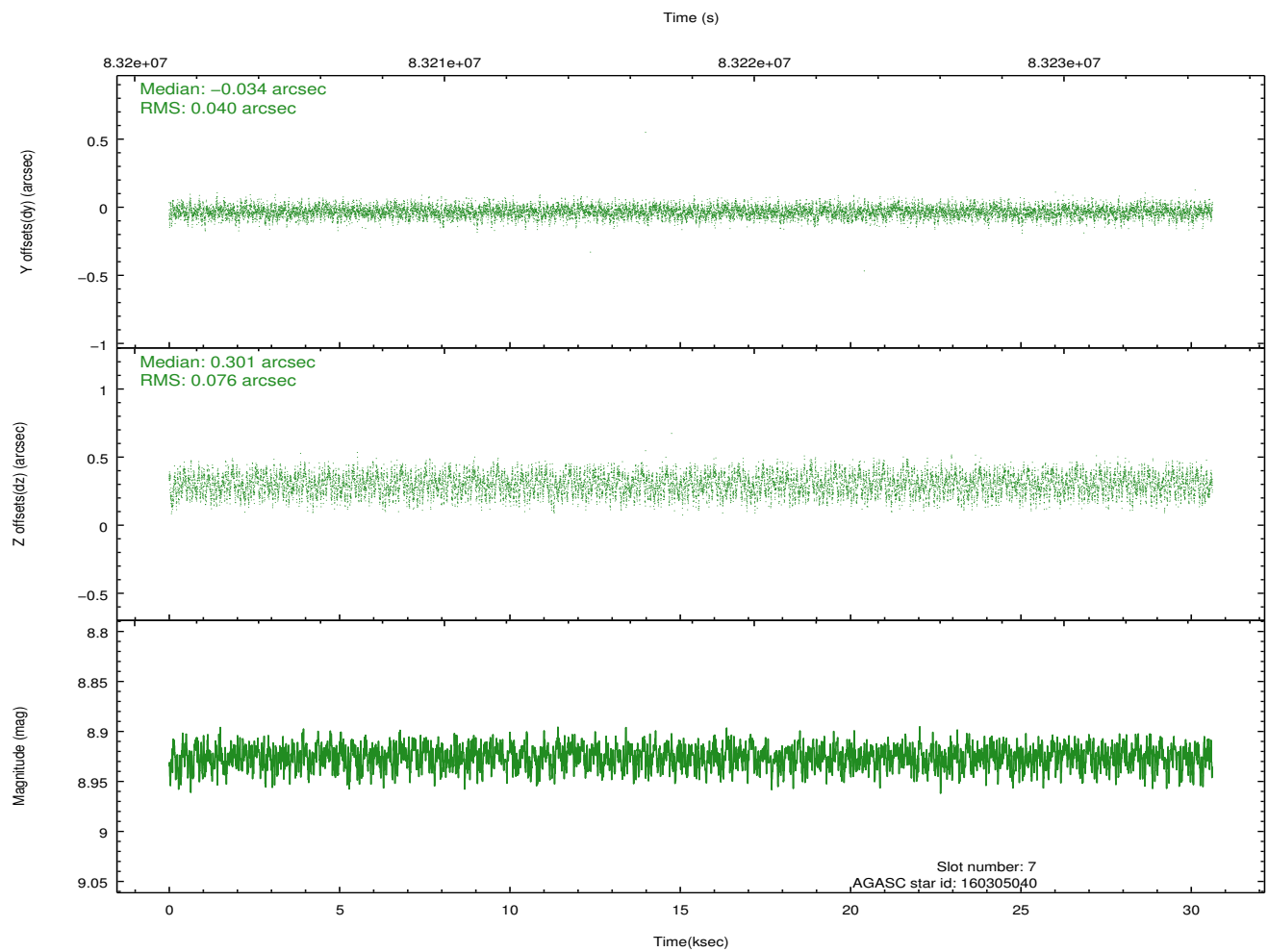
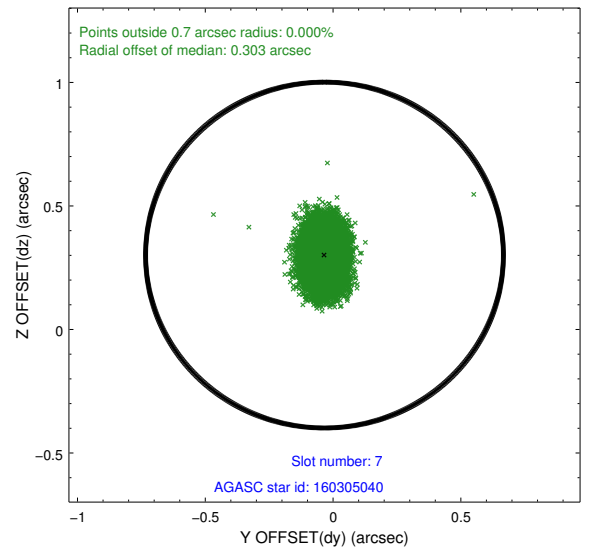
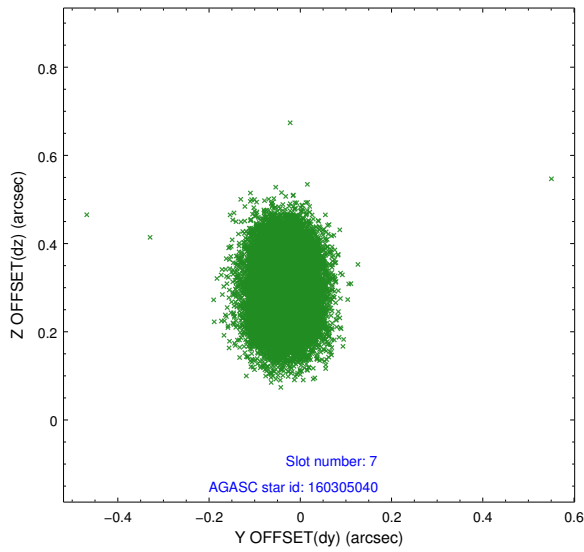
2.4.3 Slot 5



2.4.4 Slot 6

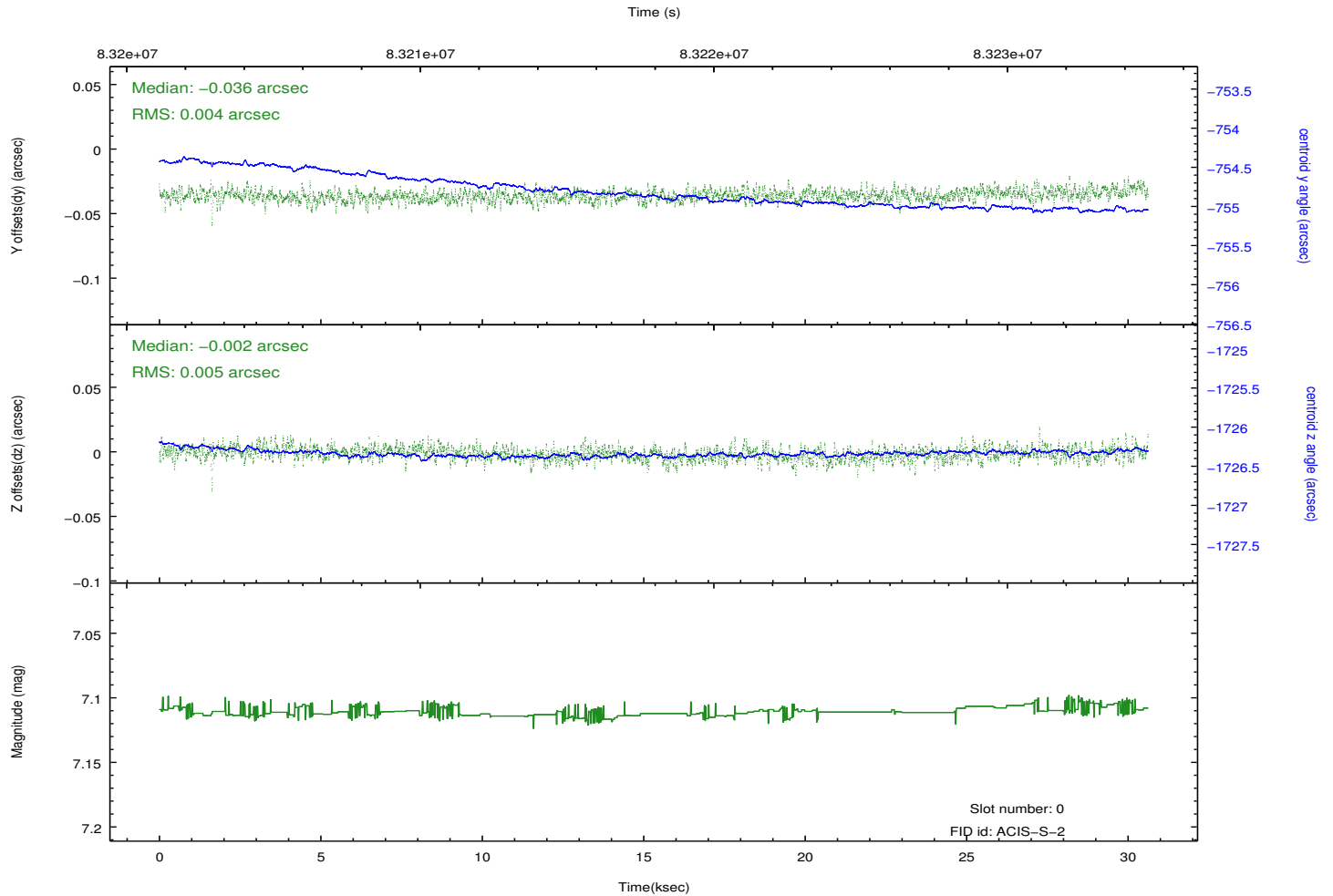
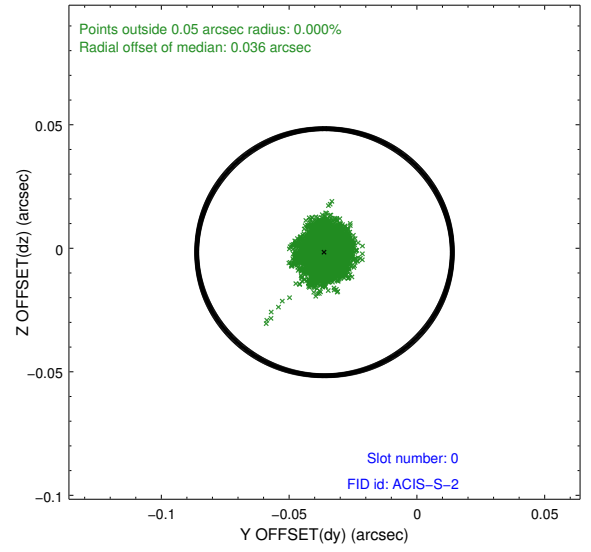
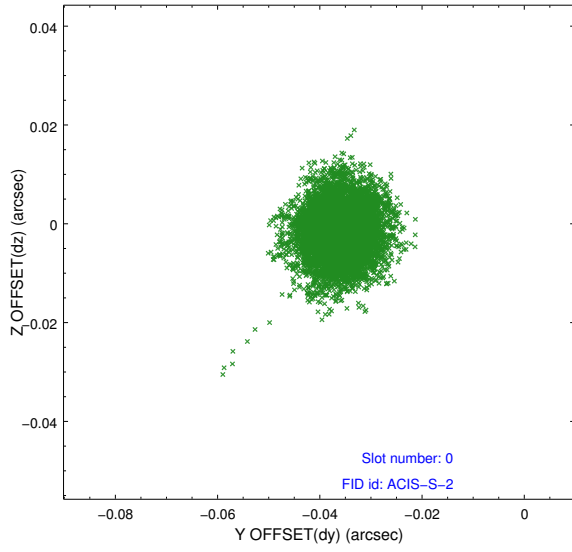


2.4.5 Slot 7

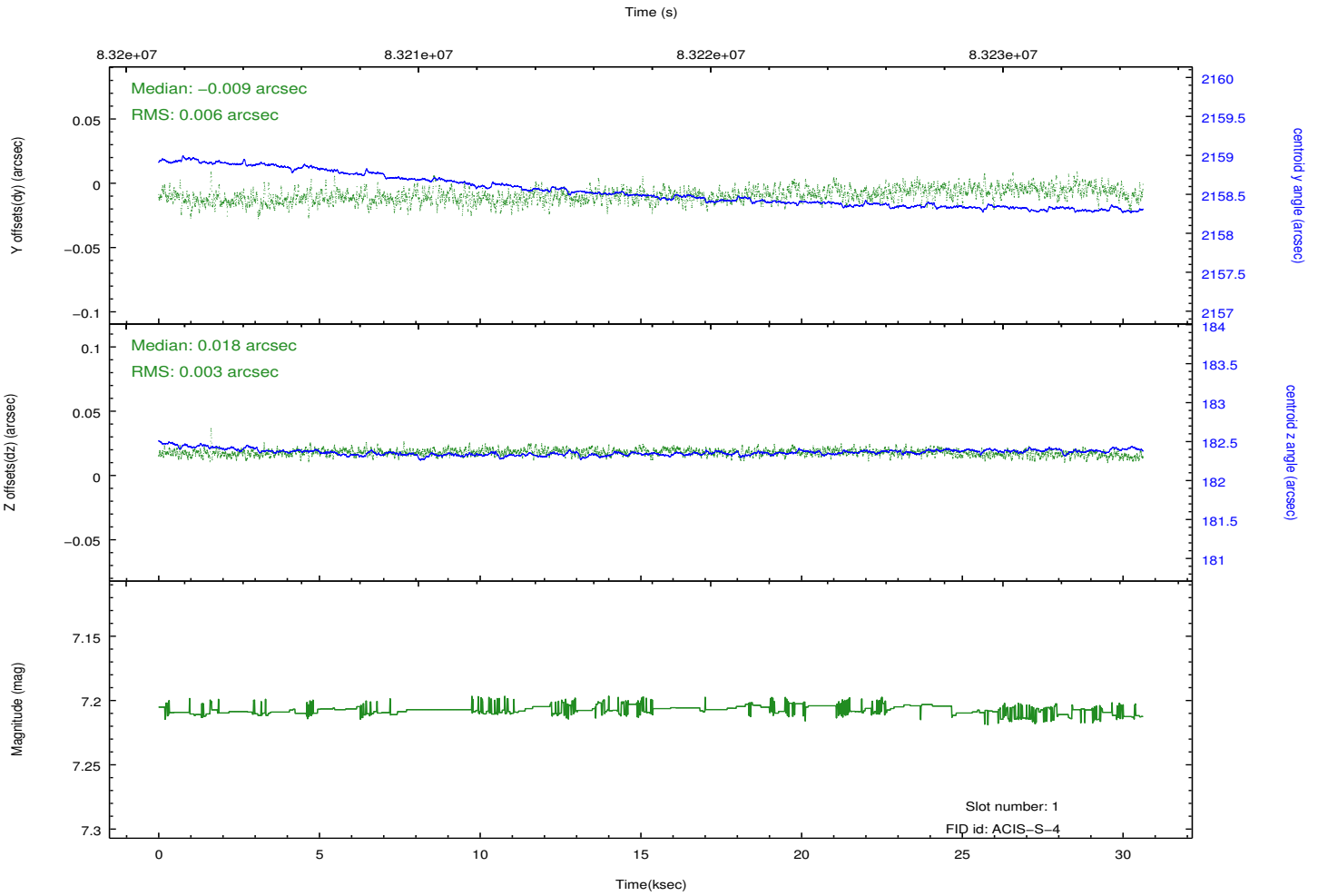
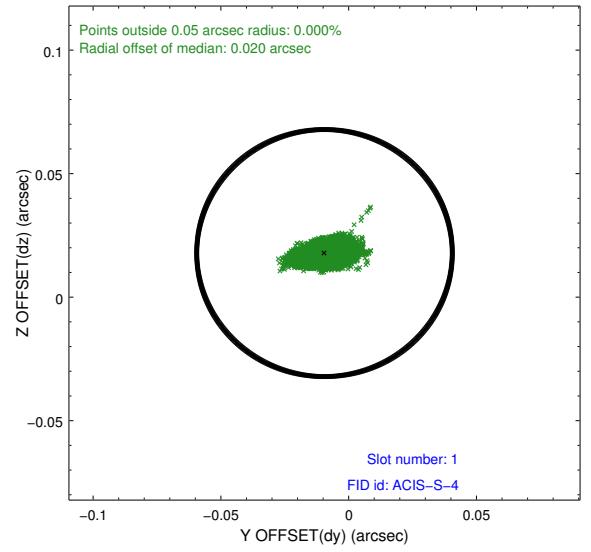
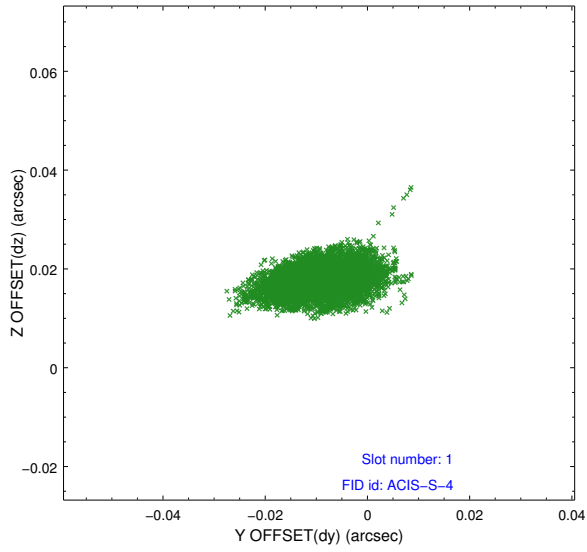


2.5 FID Slots

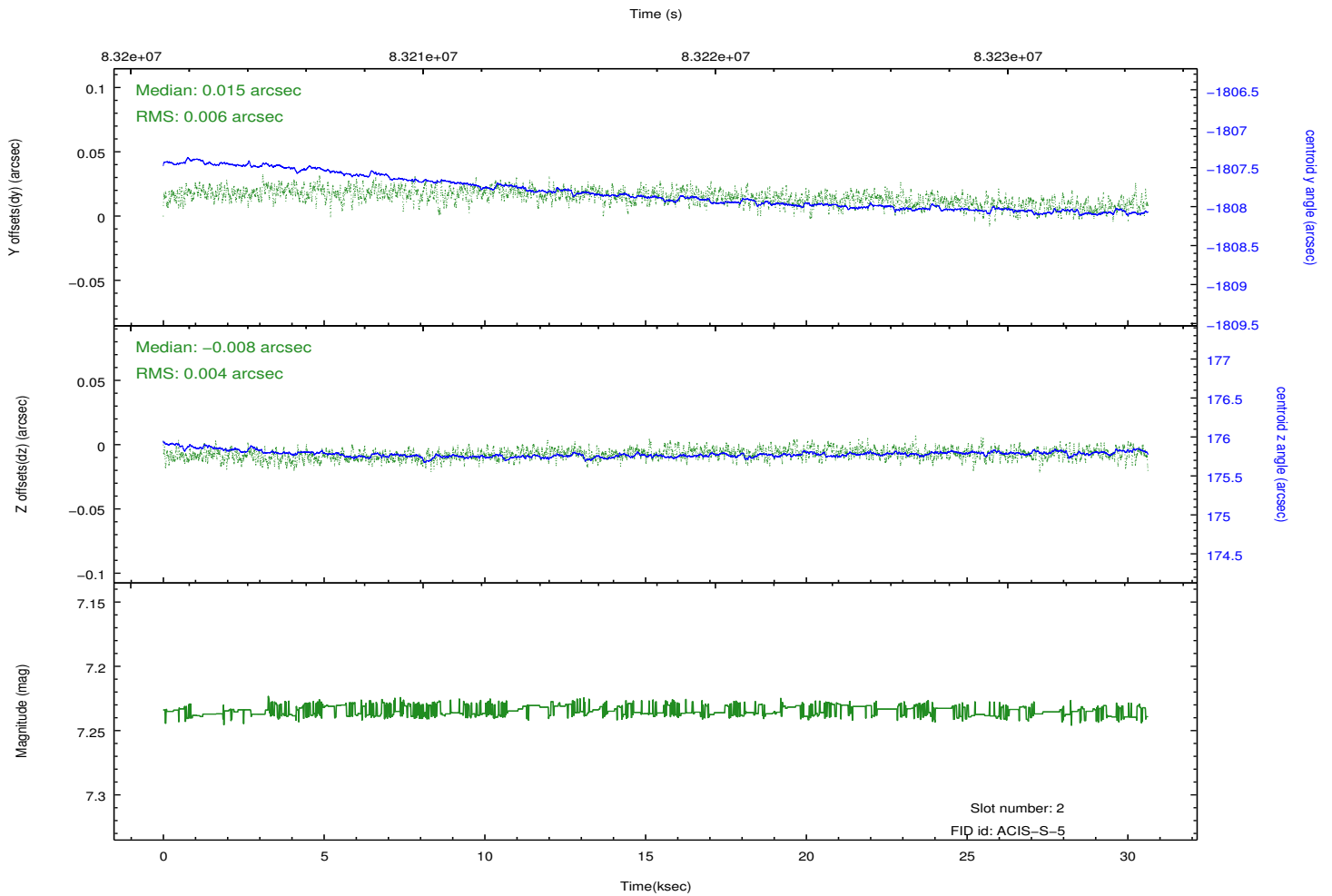
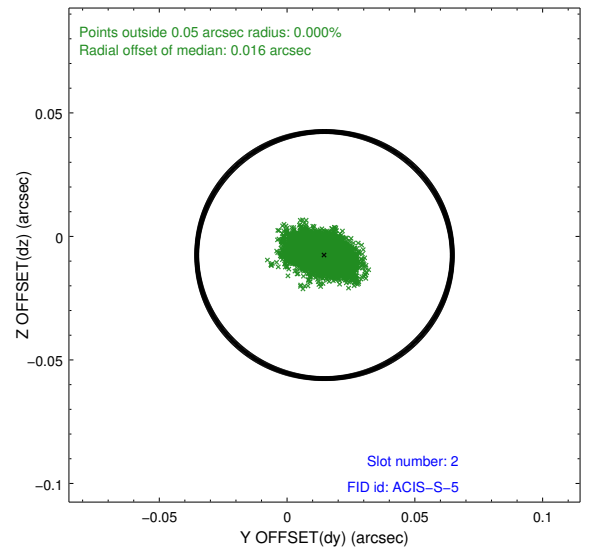
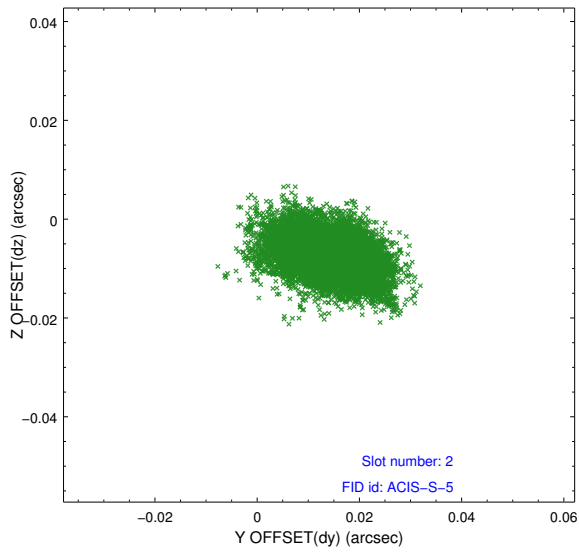
2.5.1 Slot 0



2.5.2 Slot 1



2.5.3 Slot 2



A Summary

A.1 Status

V&V Scientist	Beth Sundheim
V&V Date (YYYY-MM-DD)	2012.09.06
V&V Edition	1
V&V Disposition and Status	OK
V&V Charge Time	30.625

A.2 Comments