

V&V Reference Report

L2 ASCDS Version : 8.4.4

Observation 8944 - L2 Version 2
Chandra X-Ray Center

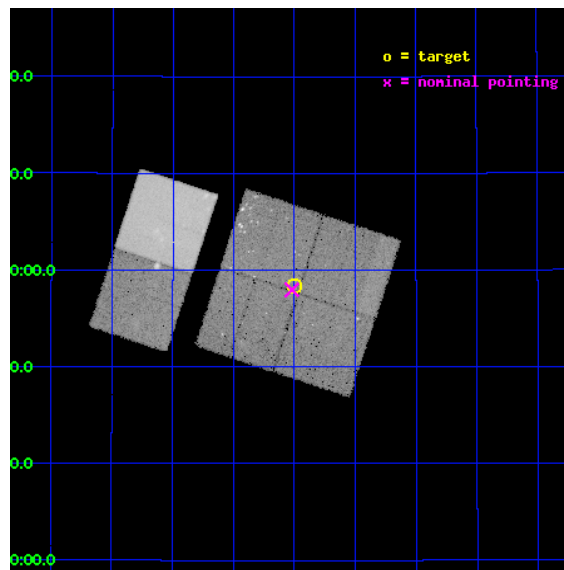
L2 Processing Date : May 11 2012

Contents

1	Front	2
2	OBI	3
2.1	OBI	3
2.1.1	Images	3
2.1.2	Bias	3
2.1.3	Parameters	4
2.1.4	Events	4
2.2	Compared Parameters	5
2.3	Aspect	6
2.4	Star Slots	9
2.4.1	Slot 3	9
2.4.2	Slot 4	10
2.4.3	Slot 5	11
2.4.4	Slot 6	12
2.4.5	Slot 7	13
2.5	FID Slots	14
2.5.1	Slot 0	14
2.5.2	Slot 1	15
2.5.3	Slot 2	16
A	Summary	17
A.1	Status	17
A.2	Comments	17

1 Front

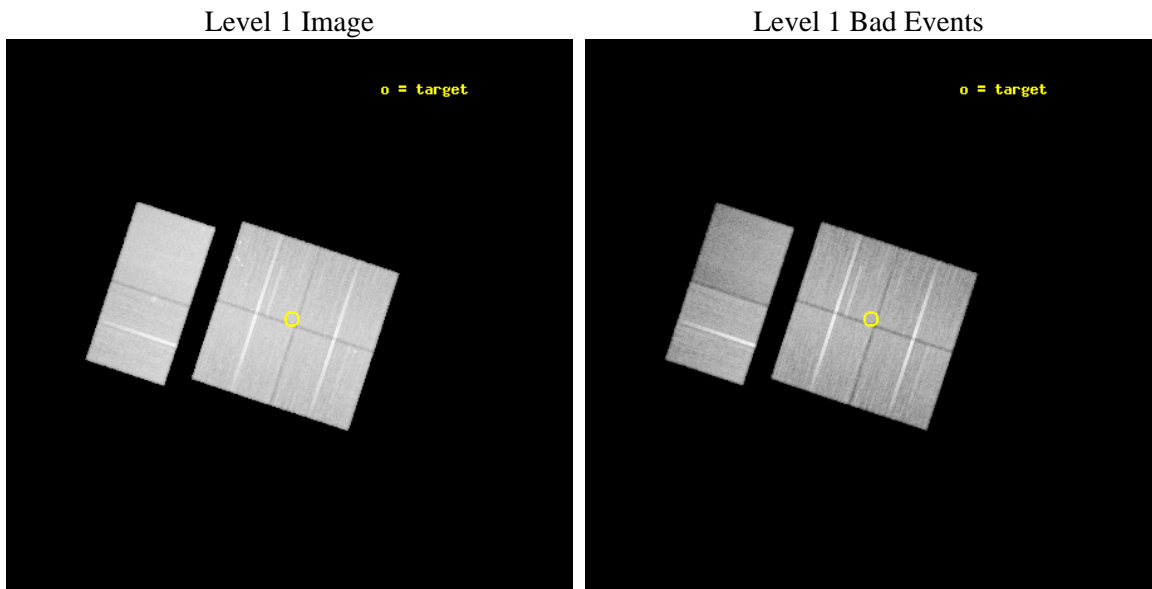
seq_num	200525	Sequence number
obs_id	8944	Observation id
title	X-ray and Radio Imaging of the Protostar Complex Adjacent to IC 348	
observer	Dr. Scott Wolk	Principal investigator
object	IC 348 - Southwest	Source name
dtcycle	0	
cycle	P	events from which exps? Prim/Second/Both
ra_targ	55.999583	Observer's specified target RA [deg]
dec_targ	31.972694	Observer's specified target Dec [deg]
ra_nom	56.00512627322	Nominal RA [deg]
dec_nom	31.966104265502	Nominal Dec [deg]
roll_nom	288.25303806442	Nominal Roll [deg]
revision	2	Processing version of data
ontime	39638.317881823	Sum of GTIs [s]
livetime	39136.393633473	Livetime [s]
ontime0	39644.799852371	Sum of GTIs [s]
ontime1	39644.799852371	Sum of GTIs [s]
ontime2	39644.799852371	Sum of GTIs [s]
ontime3	39638.317881823	Sum of GTIs [s]
ontime6	39644.799852371	Sum of GTIs [s]
ontime7	39644.799852371	Sum of GTIs [s]
l2events	293340	Number of level 2 events



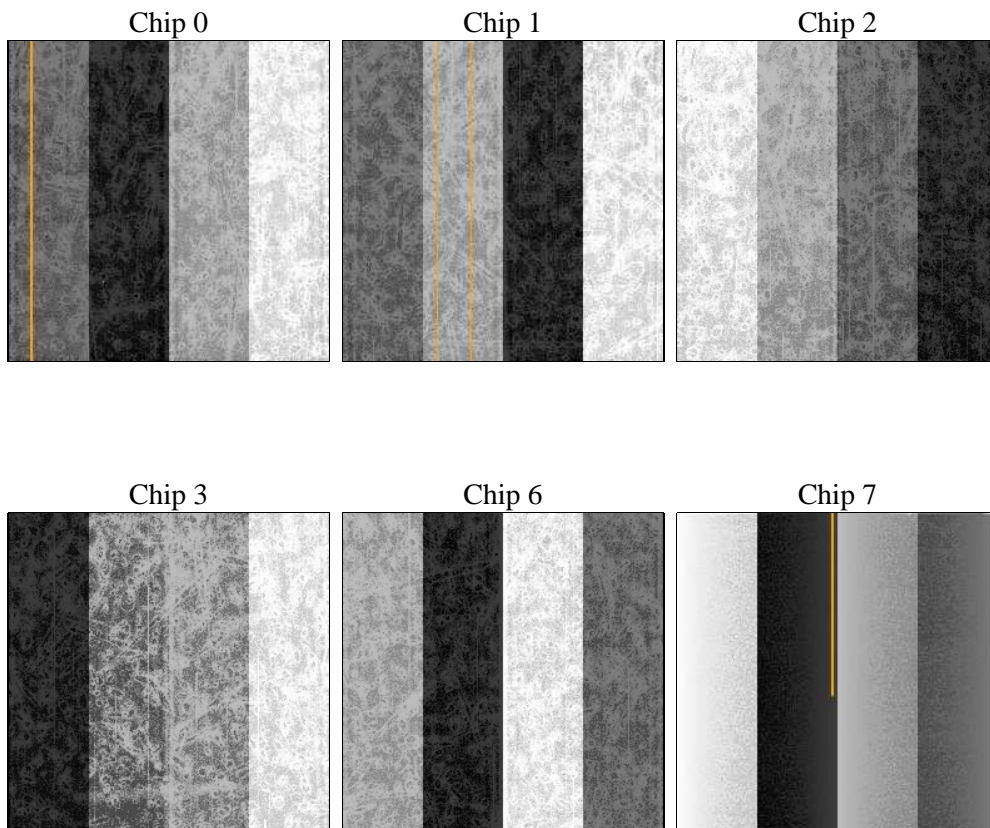
2 OBI

2.1 OBI

2.1.1 Images



2.1.2 Bias



2.1.3 Parameters

obi_num	0	Obi number	sched_exp_time	39500.000000	[s] Scheduled observation exposure time
ascdsver	8.4.4	Processing system revision	ontime	39638.317881823	Sum of GTIs [s]
caldbver	4.4.9	 	ontime0	39644.799852371	Sum of GTIs [s]
date	2012-05-11T13:54:27	Date and time of file creation	ontime1	39644.799852371	Sum of GTIs [s]
revision	2	Processing version of data	ontime2	39644.799852371	Sum of GTIs [s]
			ontime3	39638.317881823	Sum of GTIs [s]
			ontime6	39644.799852371	Sum of GTIs [s]
			ontime7	39644.799852371	Sum of GTIs [s]
			l1events	1880770	Number of level 1 events

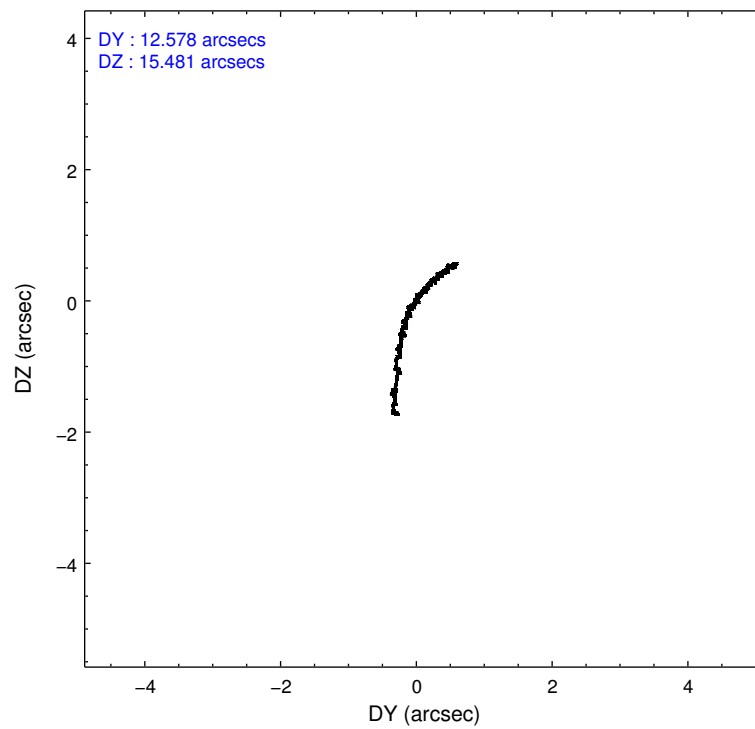
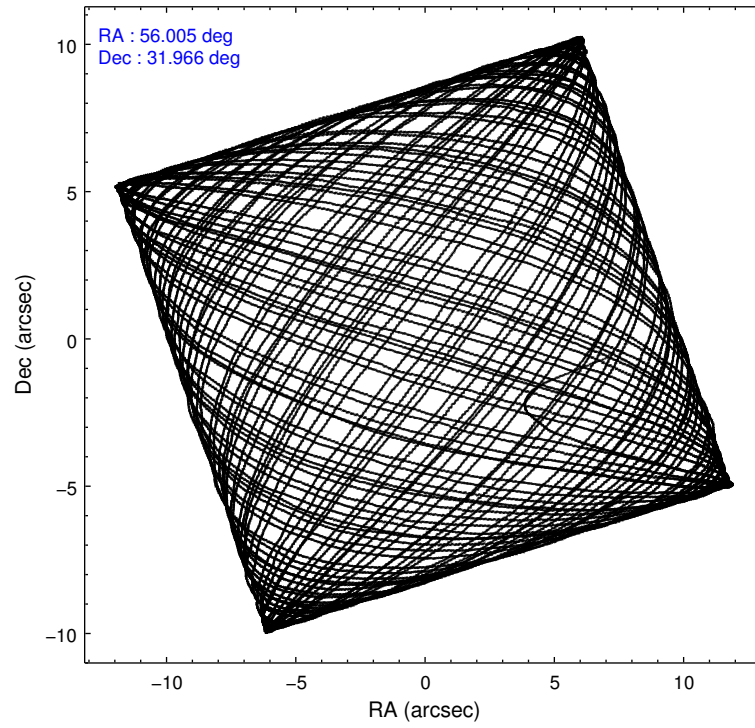
2.1.4 Events

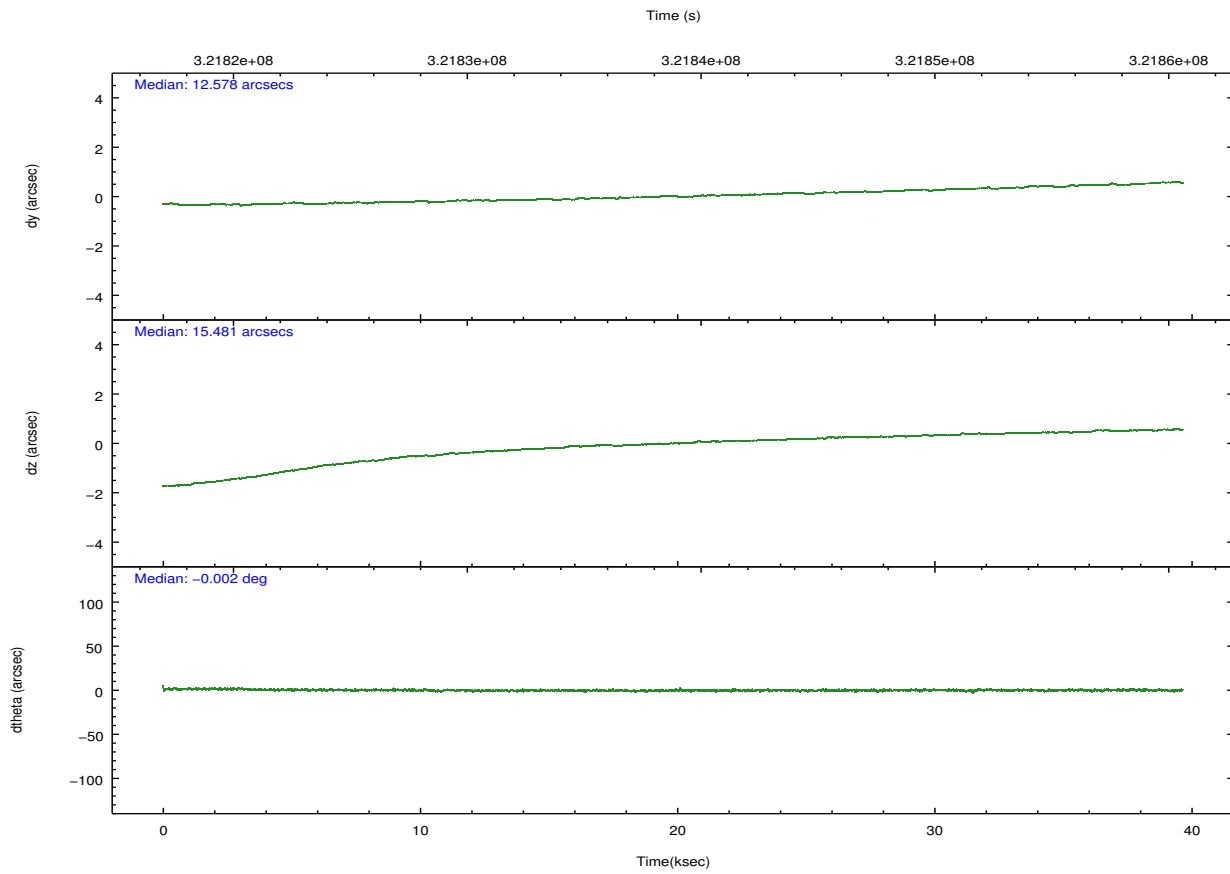
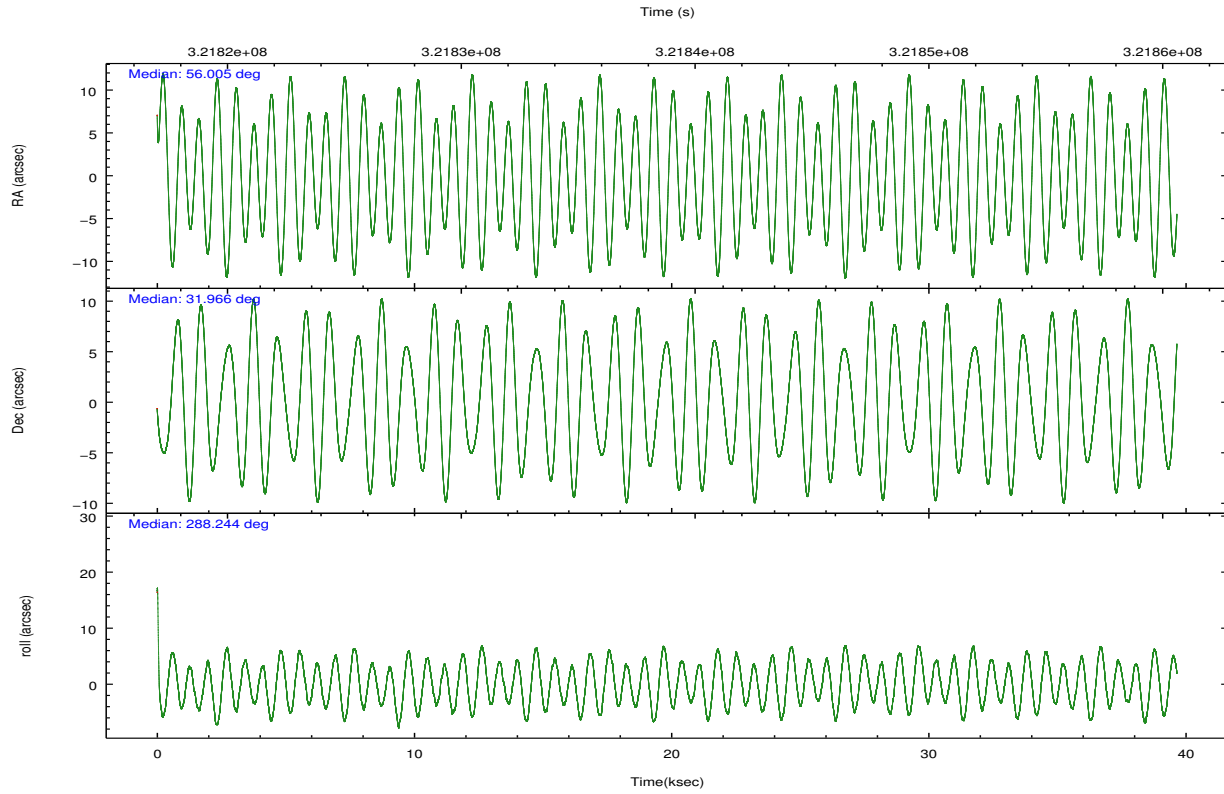
	ccd 0	ccd 1	ccd 2	ccd 3	ccd 6	ccd 7		ccd 0	ccd 1	ccd 2	ccd 3	ccd 6	ccd 7
level 1 events	284235	281419	326953	312363	320557	355243	grade 0 events	10903	11880	11349	13372	12136	15416
rejected events	253181	247613	295985	279308	287107	193095		3%	4%	3%	4%	3%	4%
rejected %	89%	87%	90%	89%	89%	54%	grade 1 events	144	170	172	194	143	457
								0%	0%	0%	0%	0%	0%
							grade 2 events	7538	7843	7405	6891	7391	33060
								2%	2%	2%	2%	2%	9%
							grade 3 events	3477	3653	3295	3404	3499	15041
								1%	1%	1%	1%	1%	4%
							grade 4 events	3295	3632	3245	3469	3510	15108
								1%	1%	0%	1%	1%	4%
							grade 5 events	10878	11837	10465	12496	13220	37060
								3%	4%	3%	4%	4%	10%
							grade 6 events	5992	6943	5796	6068	7070	84223
								2%	2%	1%	1%	2%	23%
							grade 7 events	242008	235461	285226	266469	273588	154878
								85%	83%	87%	85%	85%	43%

2.2 Compared Parameters

Parameter	Planned	Actual	Parameter	Planned	Actual
Instrument	ACIS	ACIS	Obspar format version number	7	7
Detector	ACIS-012367	ACIS-012367	Obspar file type	PREDICTED	ACTUAL
Grating	NONE	NONE	Obspar update status	NONE	UPDATED
Data mode	VFAINT	VFAINT	CCD I0 on	Y	Y
Observation mode	POINTING	POINTING	CCD I1 on	Y	Y
[deg] Pointing RA	55.980846	56.00512627321999	CCD I2 on	Y	Y
[deg] Pointing Dec	31.984338	31.96610426550193	CCD I3 on	Y	Y
[deg] Pointing Roll	288.057208	288.2530380644168	CCD S0 on	N	N
[mm] SIM focus pos	-0.782348	-0.7809083437167272	CCD S1 on	N	N
[mm] SIM defocus	0	0.001439871863259334	CCD S2 on	Y	Y
[mm] SIM translation stage pos	-233.592463	-233.5874344608287	CCD S3 on	O1	Y
[mm] SIM translation stage offset	0	-0.005018542100998502	CCD S4 on	N	N
[s] Observation start time (MET)	321819120.184000	321817982.54532	CCD S5 on	N	N
Observation start date	2008-03-13T18:10:55	2008-03-13T17:53:02	Number of optional ACIS chips dropped	0	0
[s] Observation end time (MET)	321858620.184000	321859512.47233	On-chip summing requested	N	N
Observation end date	2008-03-14T05:09:15	2008-03-14T05:25:12	Subarray requested	NONE	NONE
Read mode	TIMED	TIMED	Alternating exposures requested	N	N
			[s] Primary exposure time	0.000000	3.2

2.3 Aspect



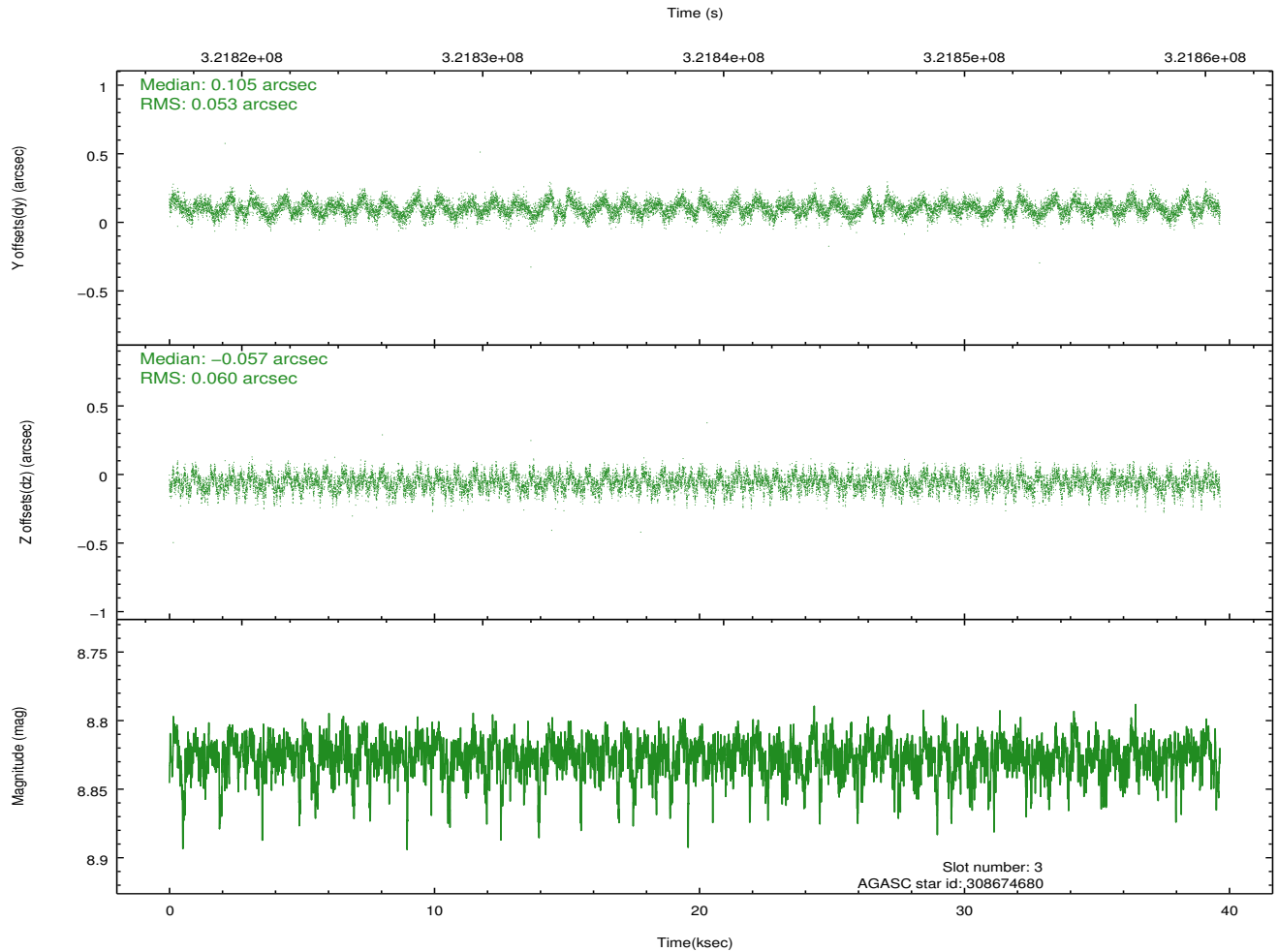
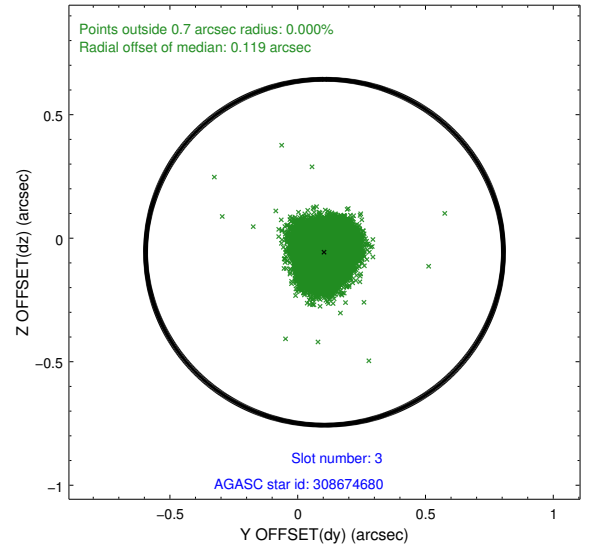
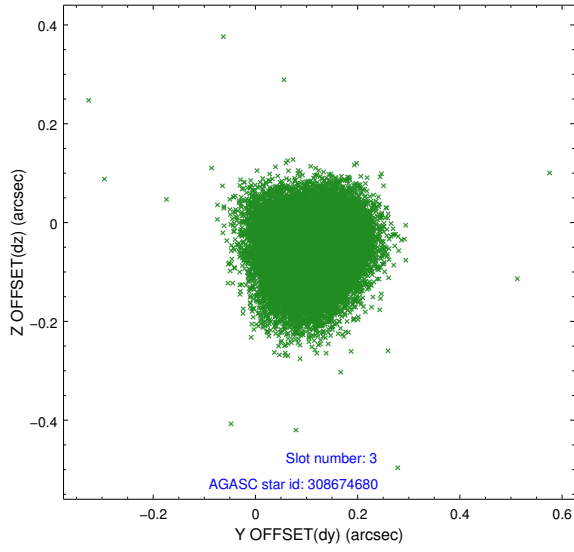


Slot Statistics

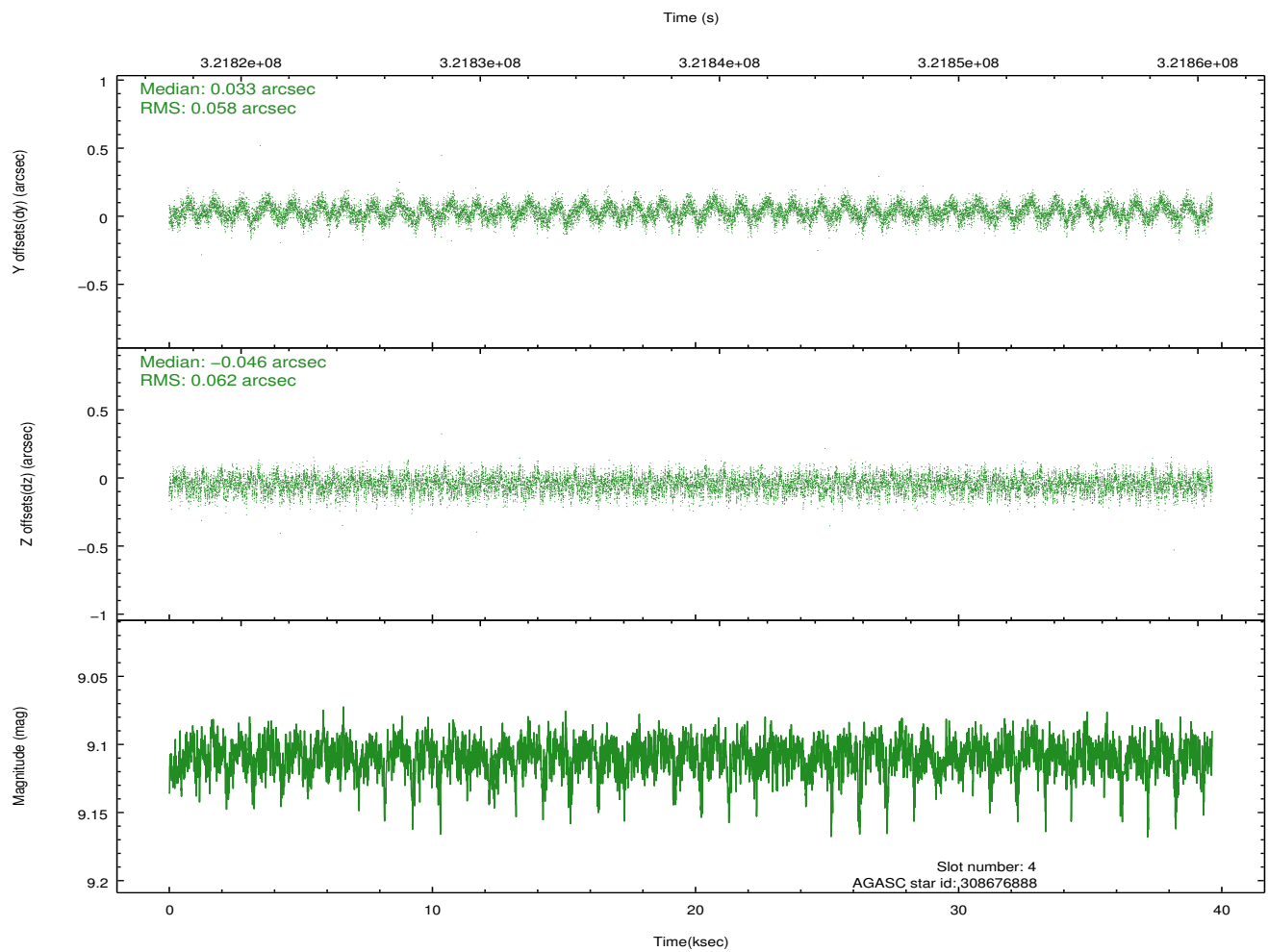
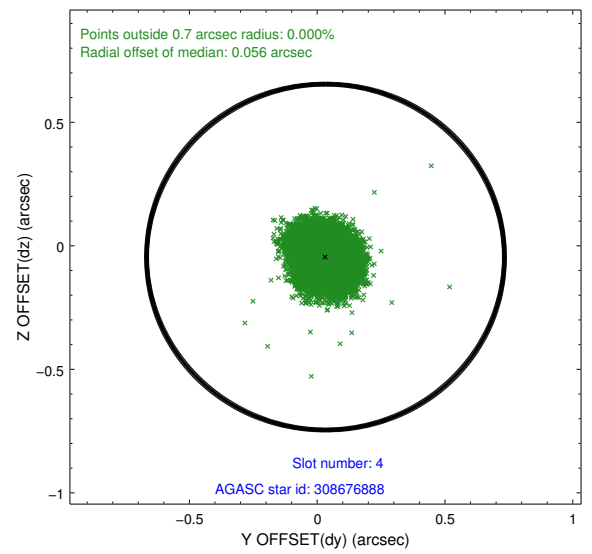
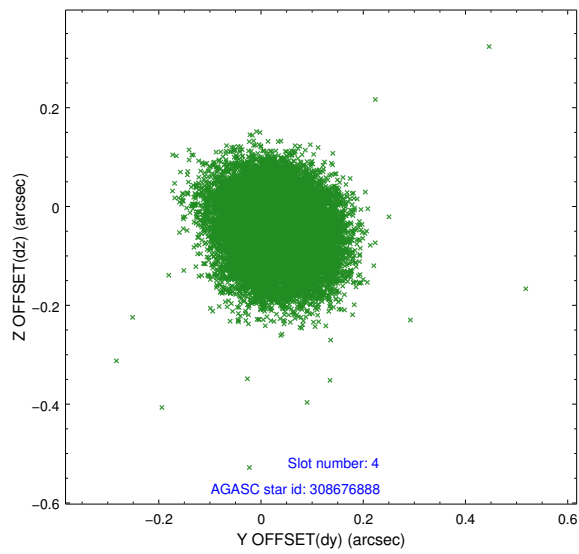
slot	status	id	mag	n_pts	med_dy	med_dz	dr1	dr2	ra	dec	mean_y	mean_z
0	FID	ACIS-I-2	7.14	9671	-0.079	-0.098	0.014	0.023	0.000000	0.000000	-767.35	-845.37
1	FID	ACIS-I-4	7.16	9670	0.185	0.075	0.012	0.021	0.000000	0.000000	2146.98	1060.95
2	FID	ACIS-I-5	7.21	9671	-0.208	0.091	0.011	0.018	0.000000	0.000000	-1821.27	1058.86
3	GUIDE	308674680	8.83	19328	0.105	-0.057	0.086	0.136	55.747345	31.652644	913.03	-1049.31
4	GUIDE	308676888	9.11	19326	0.033	-0.046	0.091	0.144	55.566279	31.676245	659.40	-1550.24
5	GUIDE	309205288	9.20	19323	-0.149	0.073	0.074	0.123	55.920876	32.625581	-2250.87	542.56
6	GUIDE	308676528	8.70	19331	0.014	-0.051	0.089	0.145	55.206355	31.826287	-200.04	-2425.74
7	GUIDE	309336160	7.09	19341	-0.006	0.074	0.081	0.127	56.670296	32.290187	-402.92	2338.40

2.4 Star Slots

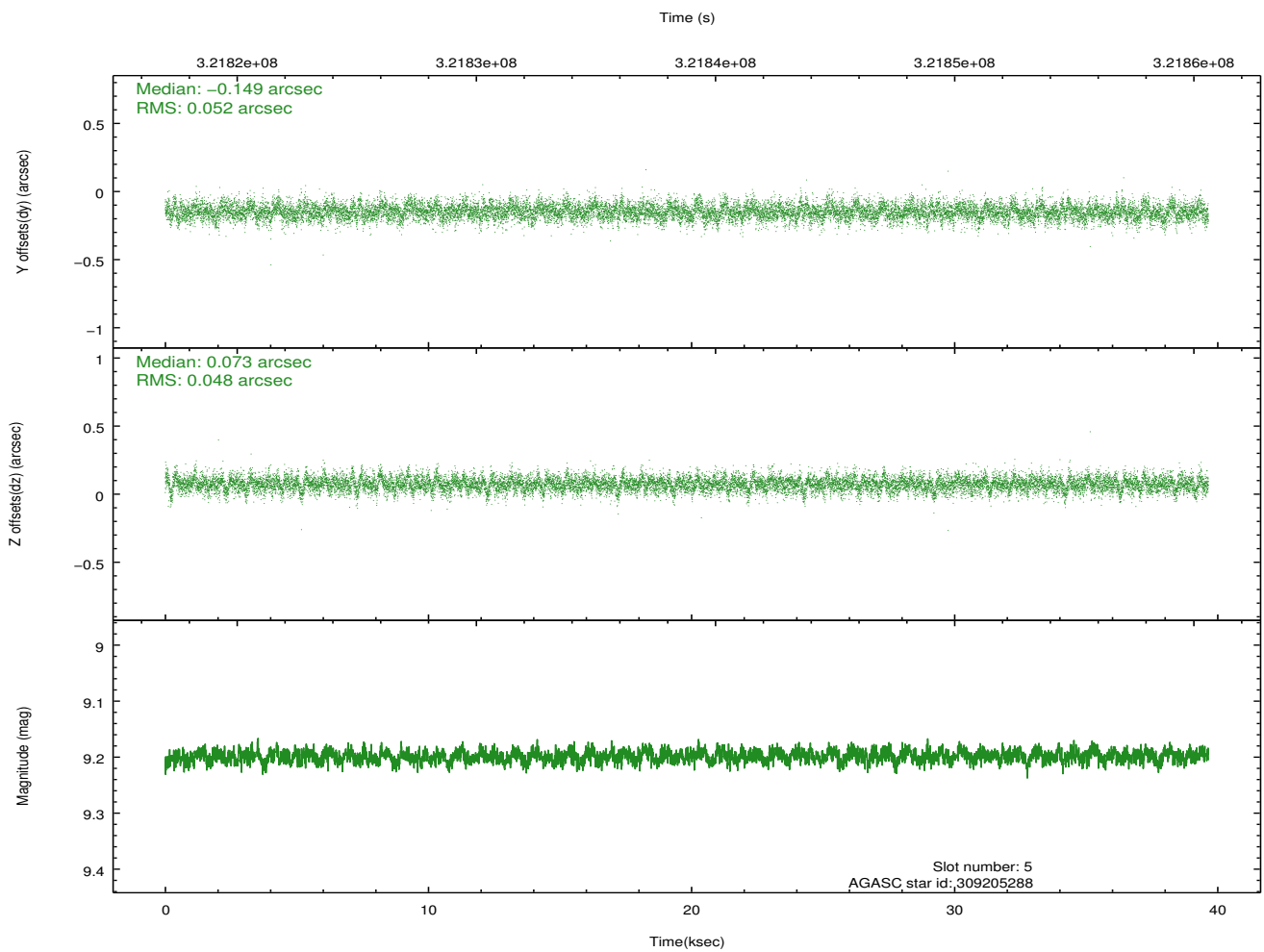
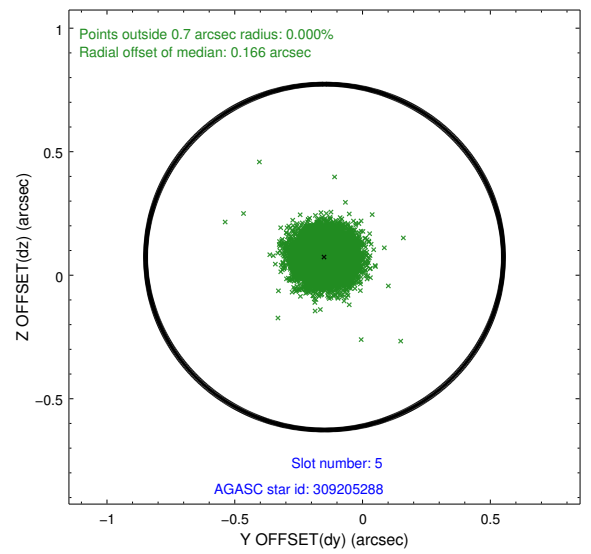
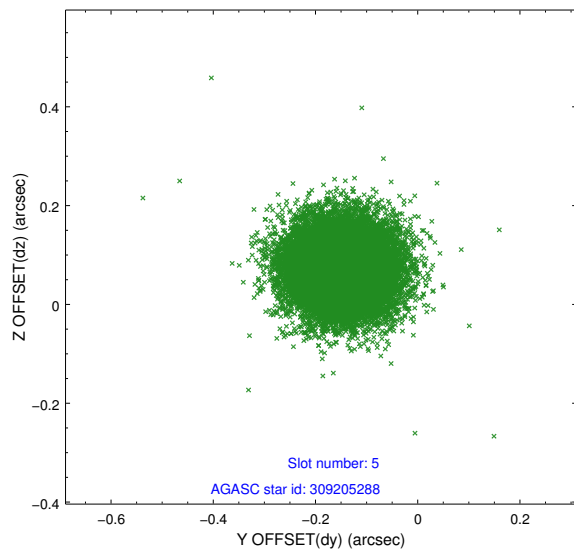
2.4.1 Slot 3



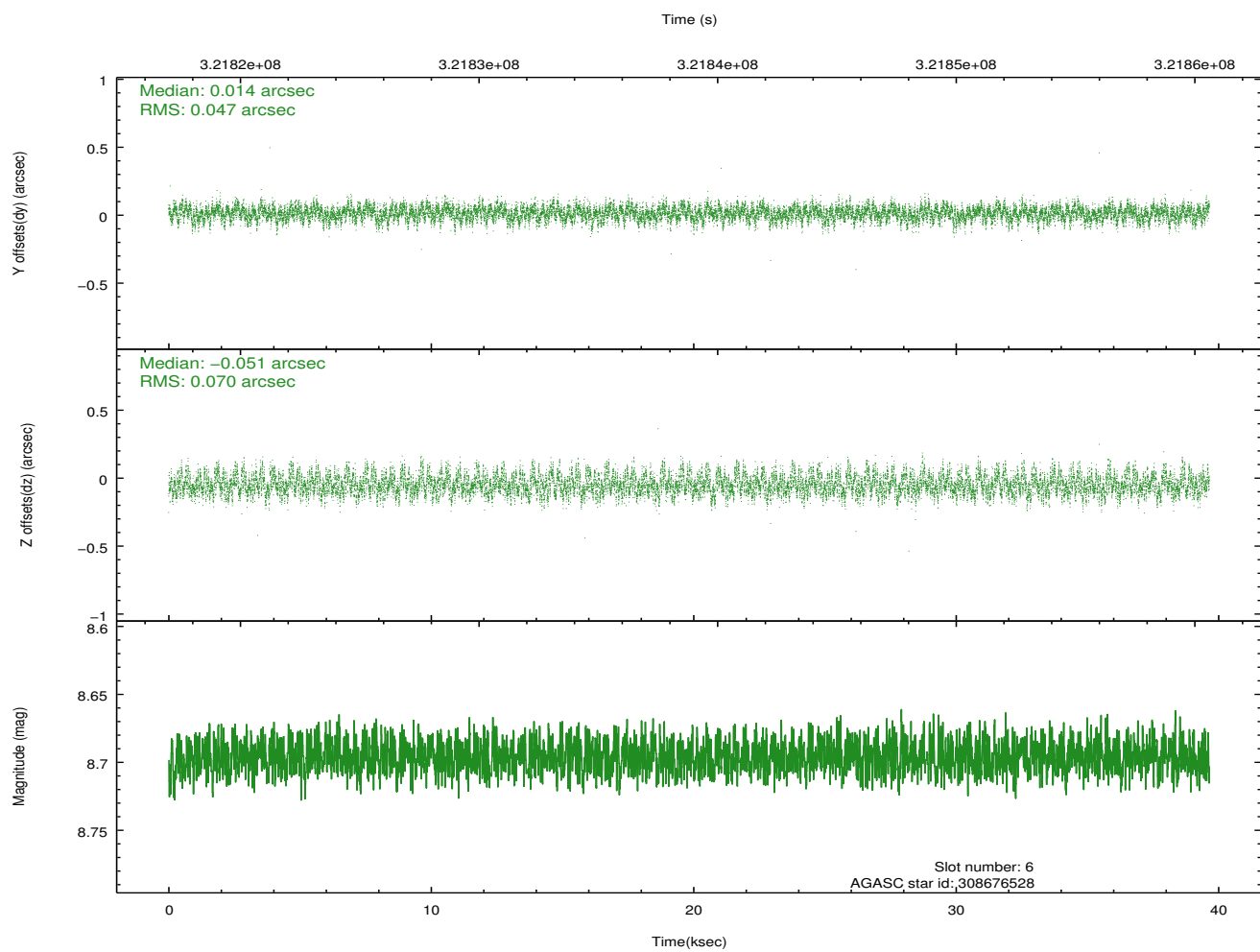
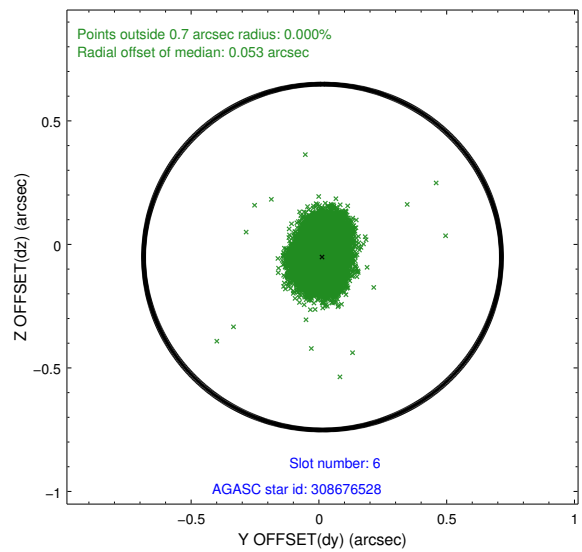
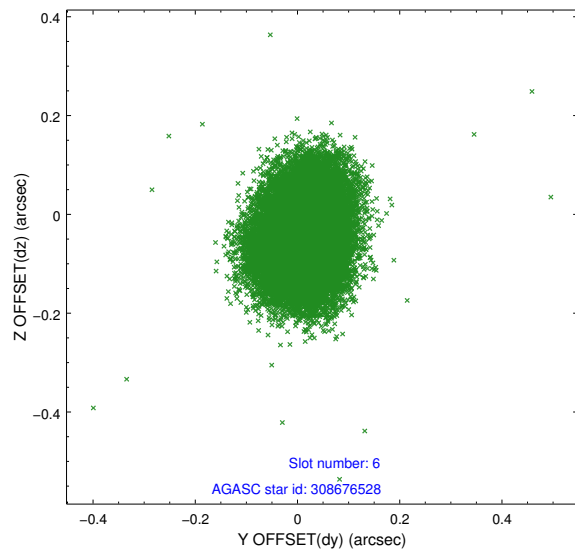
2.4.2 Slot 4



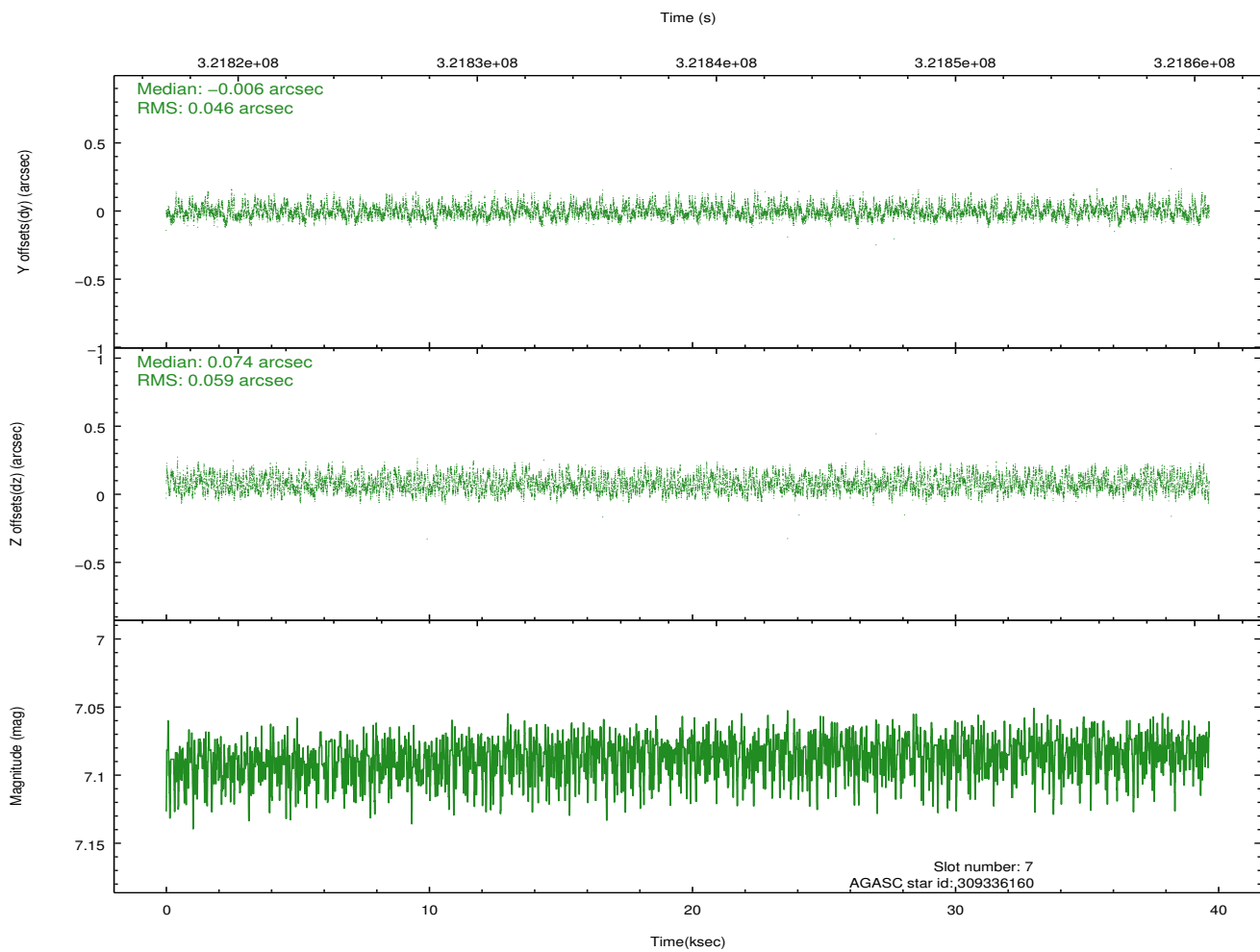
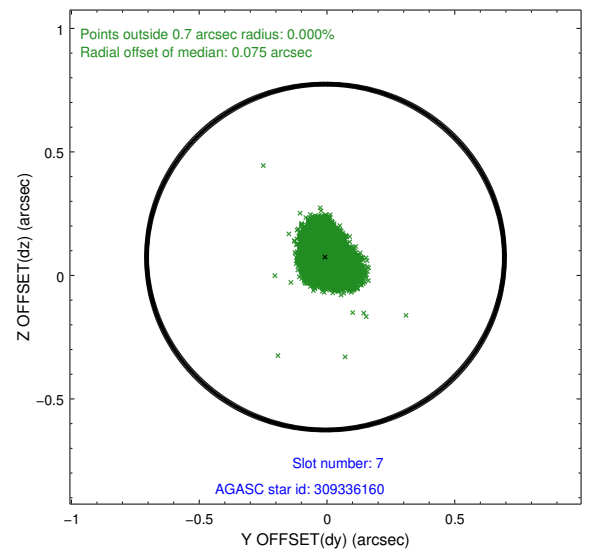
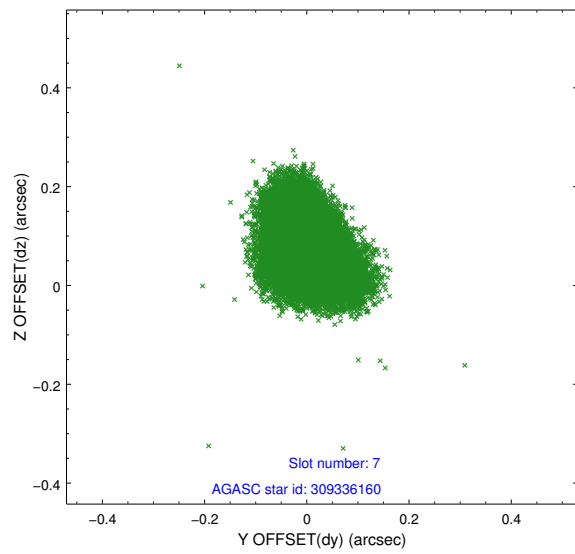
2.4.3 Slot 5



2.4.4 Slot 6

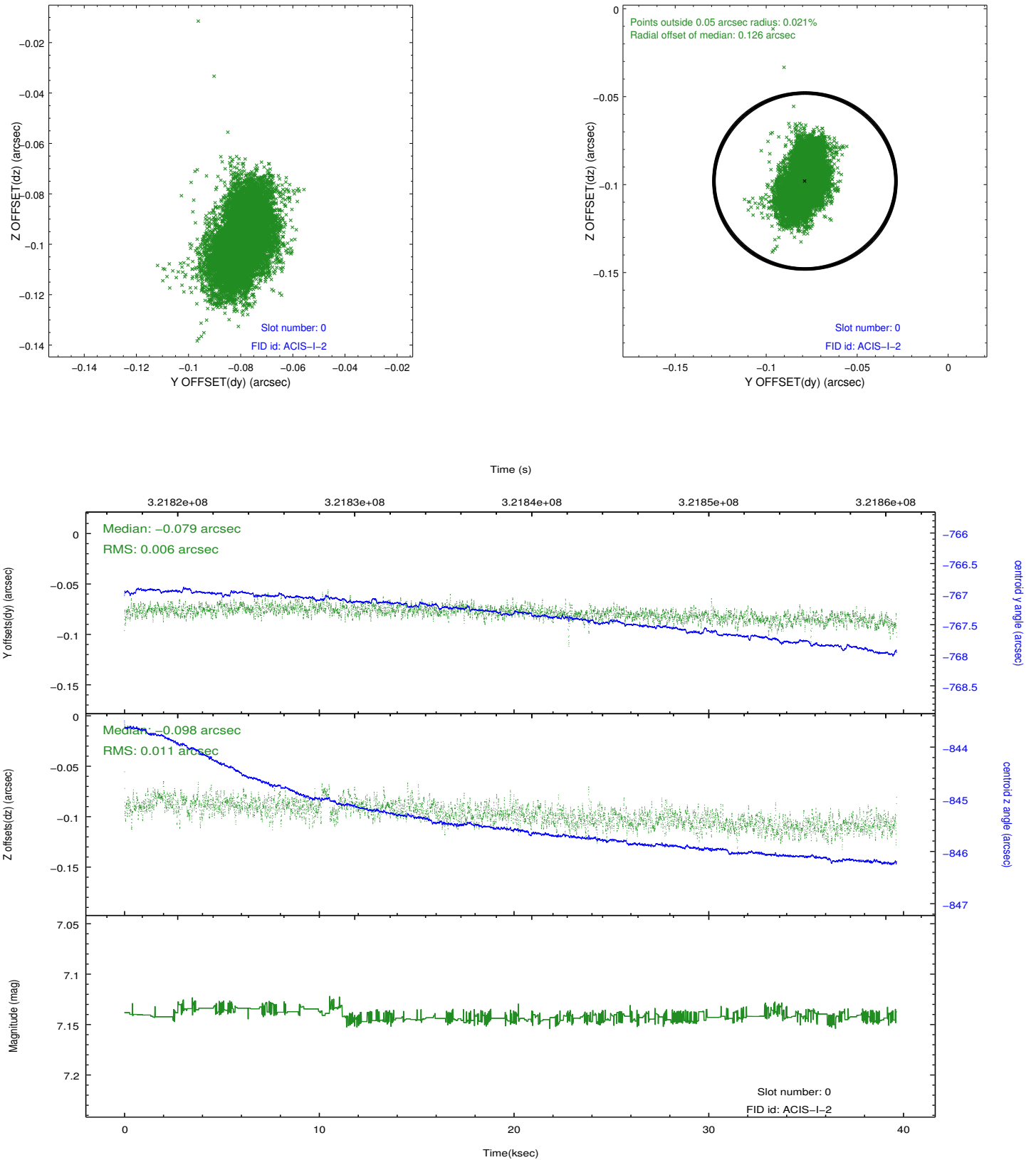


2.4.5 Slot 7

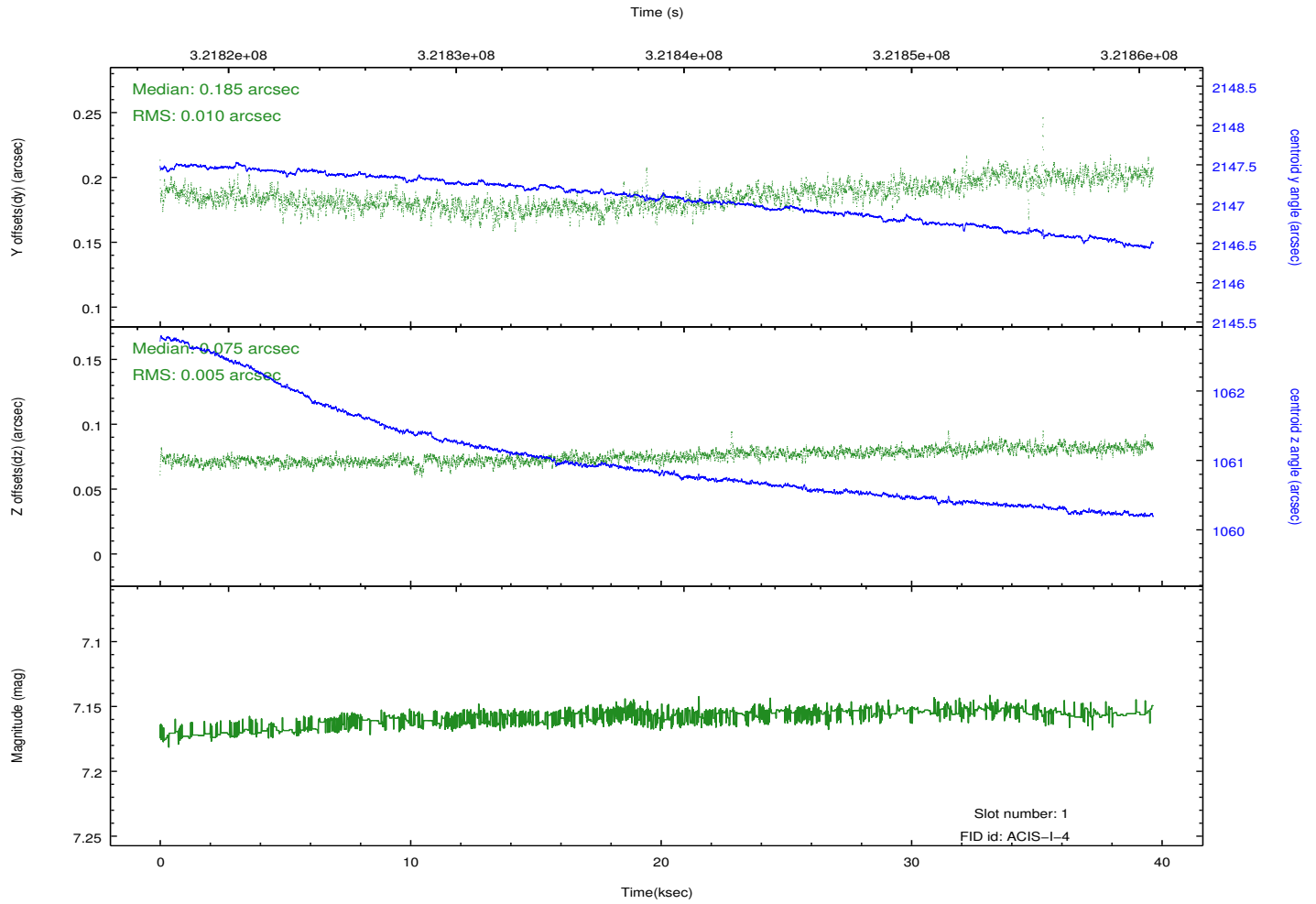
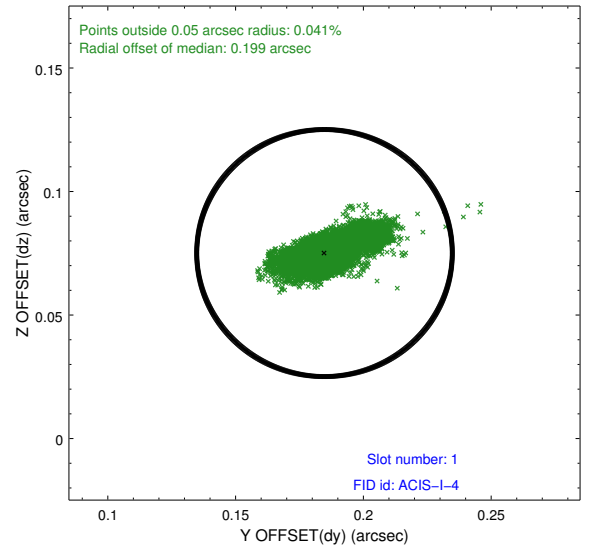
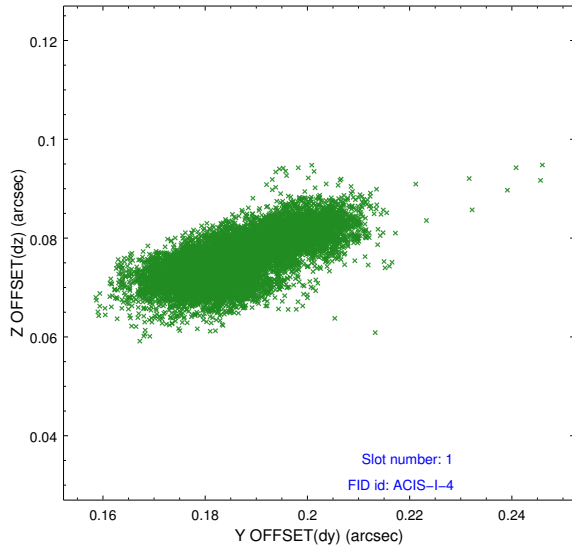


2.5 FID Slots

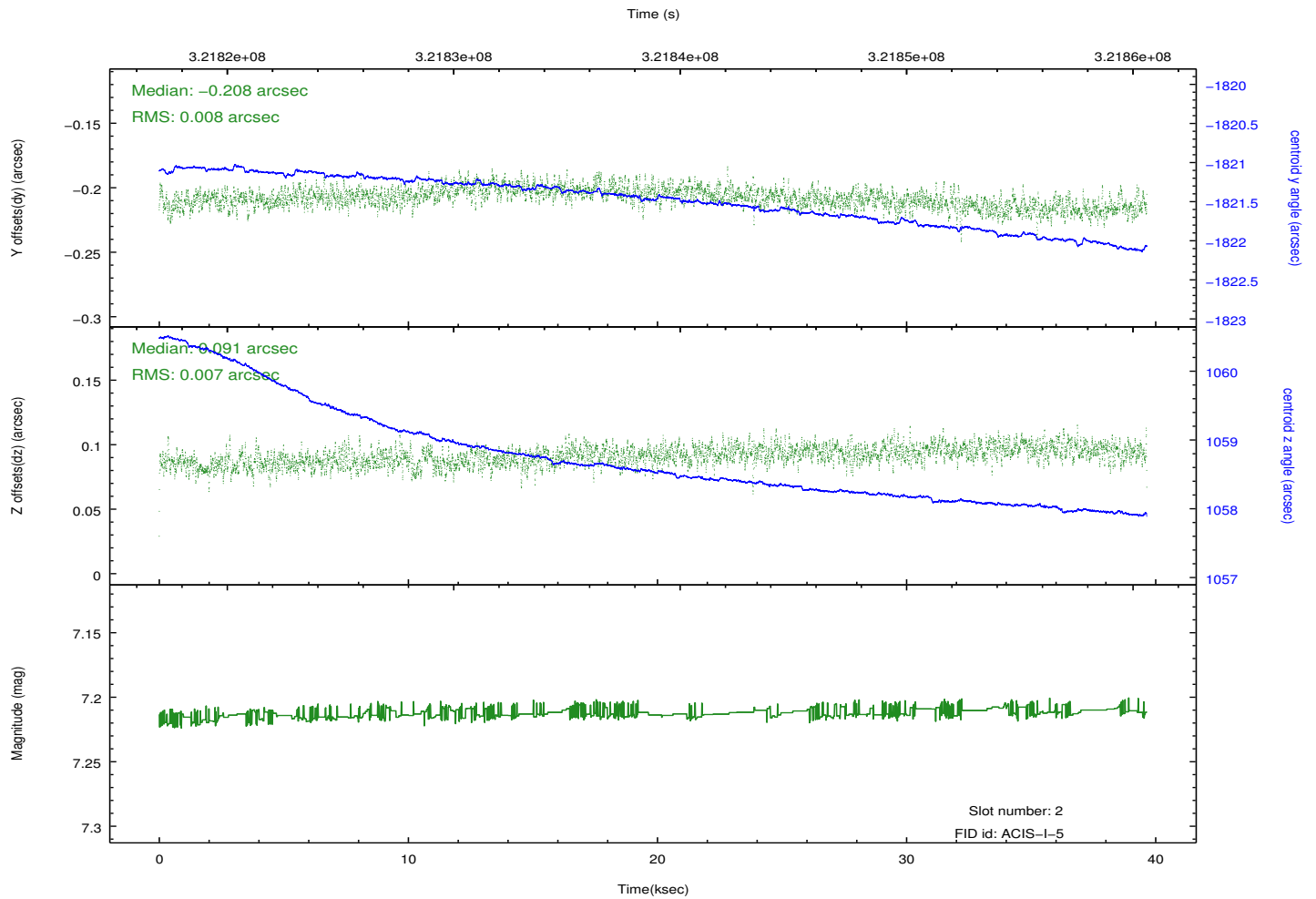
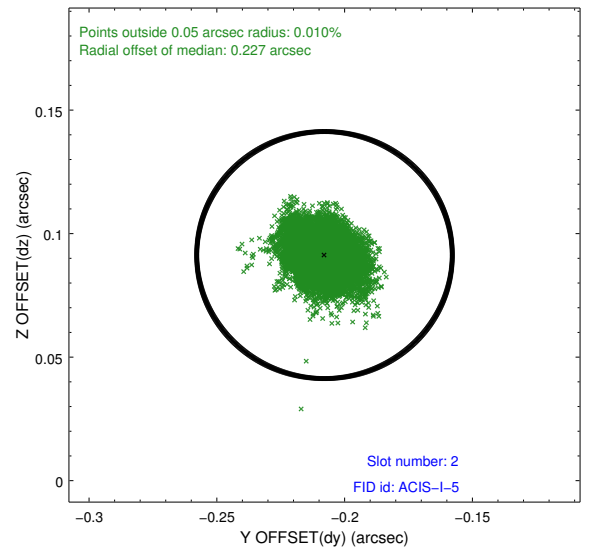
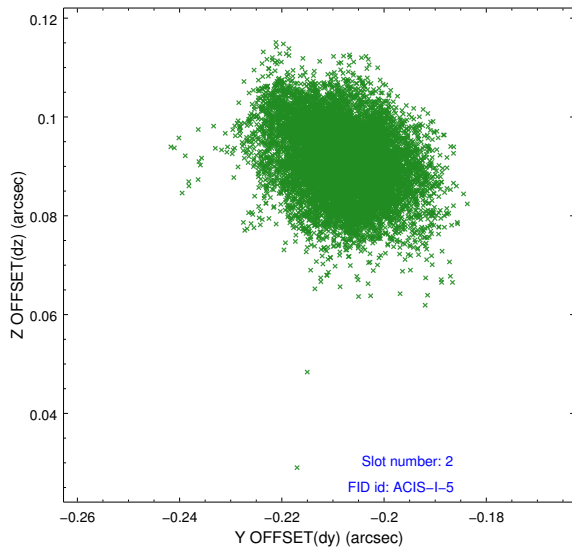
2.5.1 Slot 0



2.5.2 Slot 1



2.5.3 Slot 2



A Summary

A.1 Status

V&V Scientist	Beth Sundheim
V&V Date (YYYY-MM-DD)	2012.05.14
V&V Edition	1
V&V Disposition and Status	OK
V&V Charge Time	39.6383178

A.2 Comments

Joint proposal with NRAO.