

V&V Reference Report

L2 ASCDS Version : 8.4.5

Observation 904 - L2 Version 3
Chandra X-Ray Center

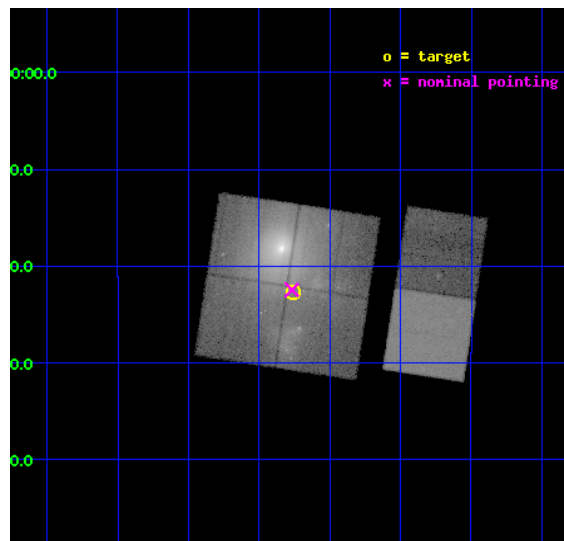
L2 Processing Date : Sep 1 2012

Contents

1	Front	2
2	OBI	3
2.1	OBI	3
2.1.1	Images	3
2.1.2	Bias	3
2.1.3	Parameters	4
2.1.4	Events	4
2.2	Compared Parameters	5
2.3	Aspect	6
2.4	Star Slots	9
2.4.1	Slot 3	9
2.4.2	Slot 4	10
2.4.3	Slot 5	11
2.4.4	Slot 6	12
2.4.5	Slot 7	13
2.5	FID Slots	14
2.5.1	Slot 0	14
2.5.2	Slot 1	15
2.5.3	Slot 2	16
A	Summary	17
A.1	Status	17
A.2	Comments	17

1 Front

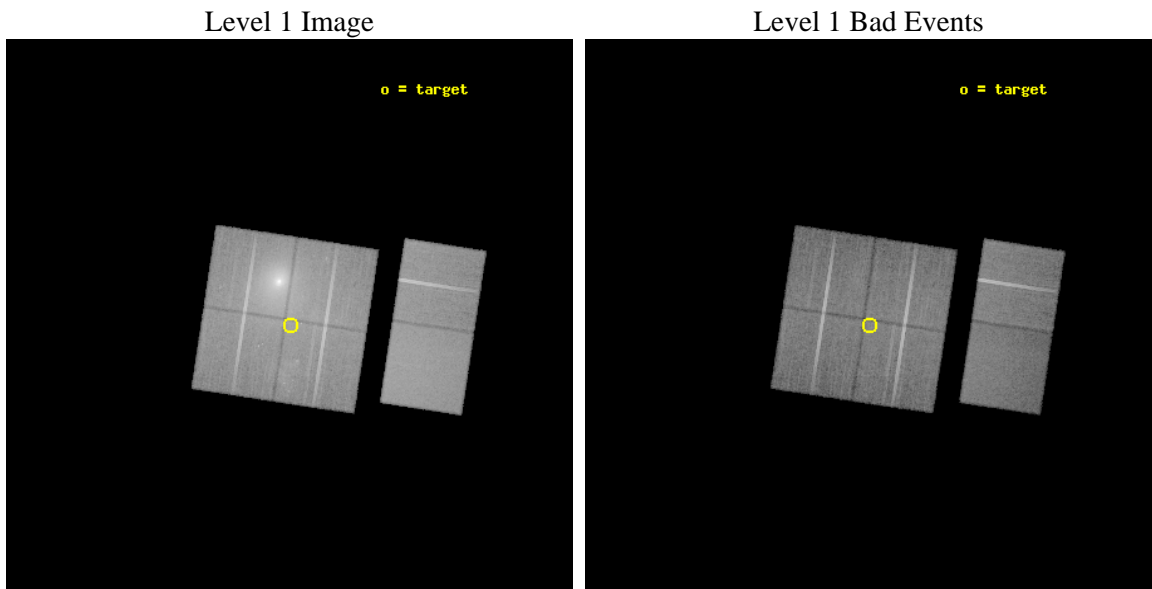
seq_num	800080	Sequence number
obs_id	904	Observation id
title	SUBCLUSTER MERGERS, RADIO RELICS, AND THE COOLING FLOW IN ABELL 85	
observer	Dr. CRAIG SARAZIN	Principal investigator
object	A85	Source name
dtcycle	0	
cycle	P	events from which exps? Prim/Second/Both
ra_targ	10.440833	Observer's specified target RA [deg]
dec_targ	-9.379167	Observer's specified target Dec [deg]
ra_nom	10.44206120775	Nominal RA [deg]
dec_nom	-9.3744003311289	Nominal Dec [deg]
roll_nom	98.666553732356	Nominal Roll [deg]
revision	3	Processing version of data
ontime	38911.918075845	Sum of GTIs [s]
livetime	38419.191939224	Livetime [s]
ontime0	38915.159065992	Sum of GTIs [s]
ontime1	38915.159065992	Sum of GTIs [s]
ontime2	38918.400036231	Sum of GTIs [s]
ontime3	38911.918075845	Sum of GTIs [s]
ontime6	38918.400036231	Sum of GTIs [s]
ontime7	38911.918095738	Sum of GTIs [s]
l2events	579338	Number of level 2 events



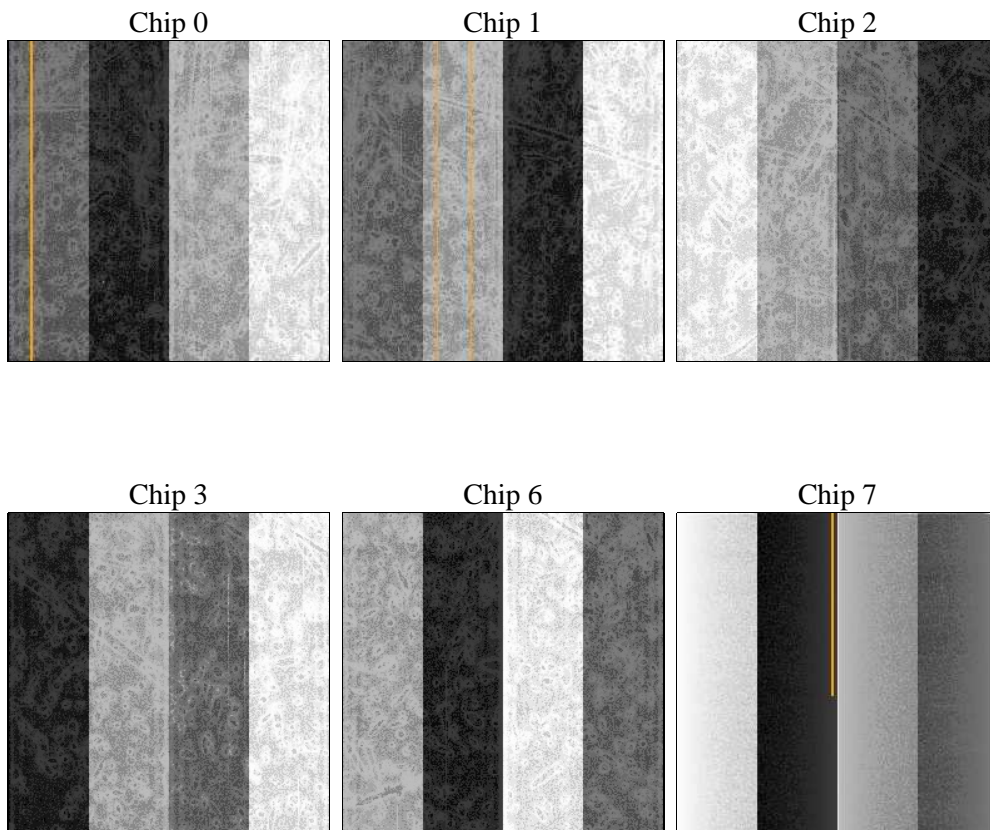
2 OBI

2.1 OBI

2.1.1 Images



2.1.2 Bias



2.1.3 Parameters

obi_num	0	Obi number	sched_exp_time	38965.000000	[s] Scheduled observation exposure time
ascdsver	8.4.5	Processing system revision	ontime	38911.918075845	Sum of GTIs [s]
caldbver	4.5.1.1	 	ontime0	38915.159065992	Sum of GTIs [s]
date	2012-09-01T01:59:10	Date and time of file creation	ontime1	38915.159065992	Sum of GTIs [s]
revision	3	Processing version of data	ontime2	38918.400036231	Sum of GTIs [s]
			ontime3	38911.918075845	Sum of GTIs [s]
			ontime6	38918.400036231	Sum of GTIs [s]
			ontime7	38911.918095738	Sum of GTIs [s]
			l1events	1793136	Number of level 1 events

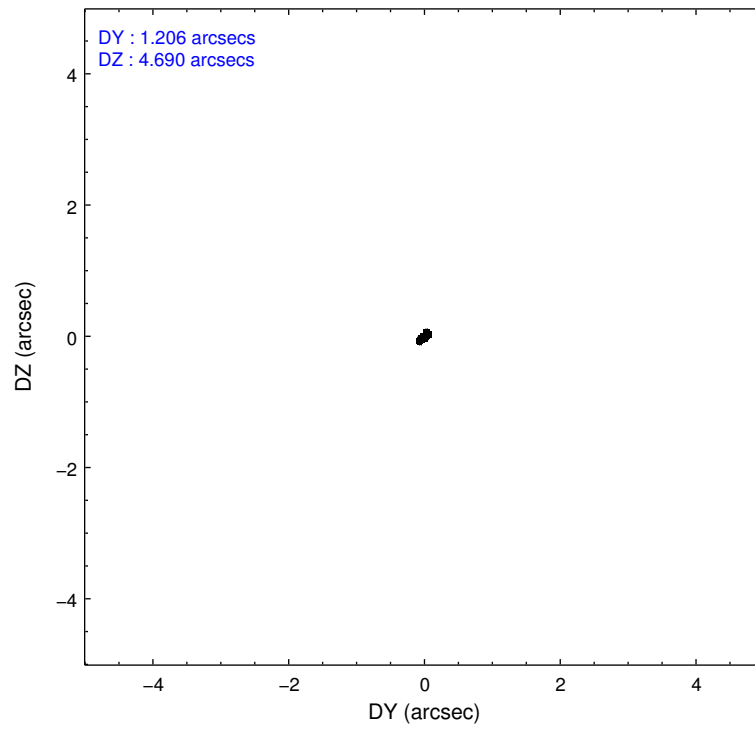
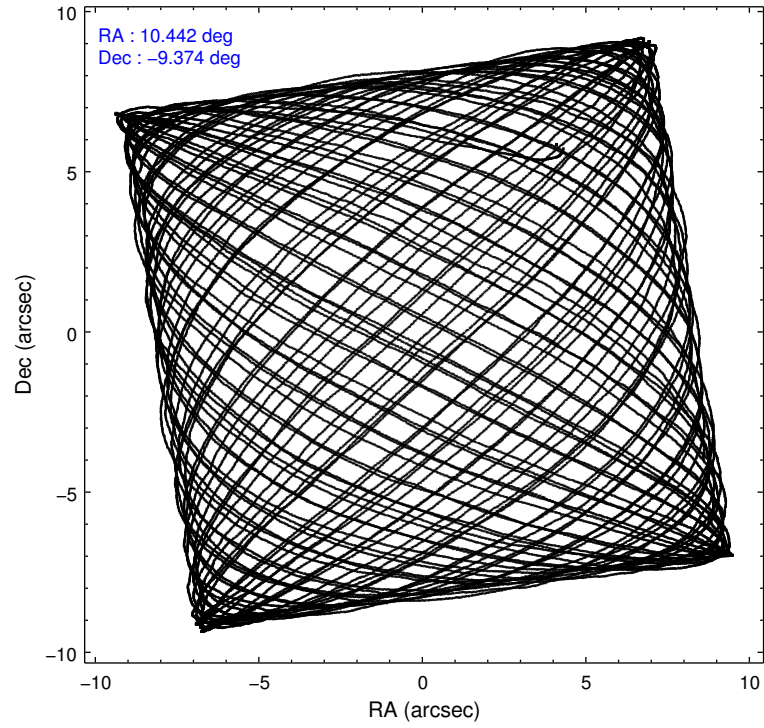
2.1.4 Events

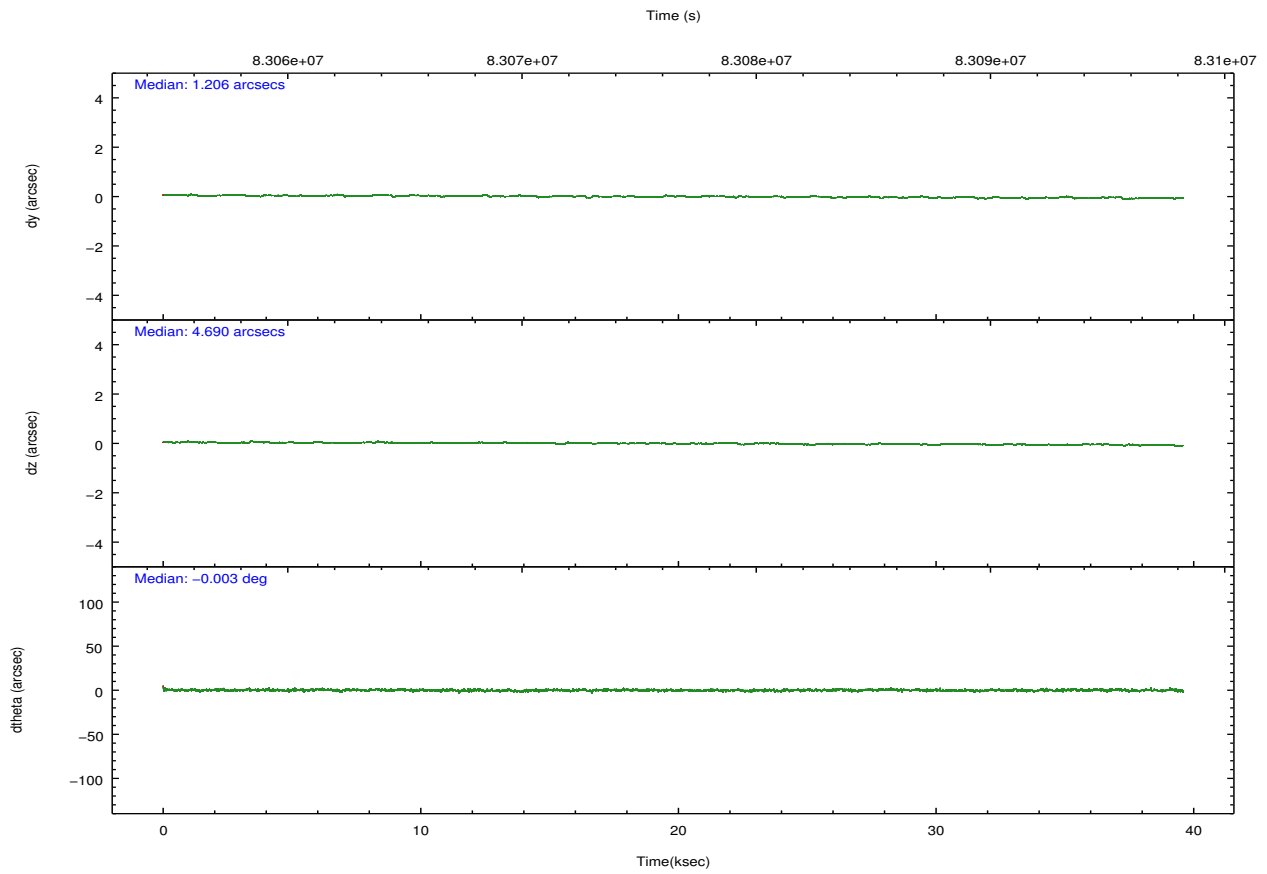
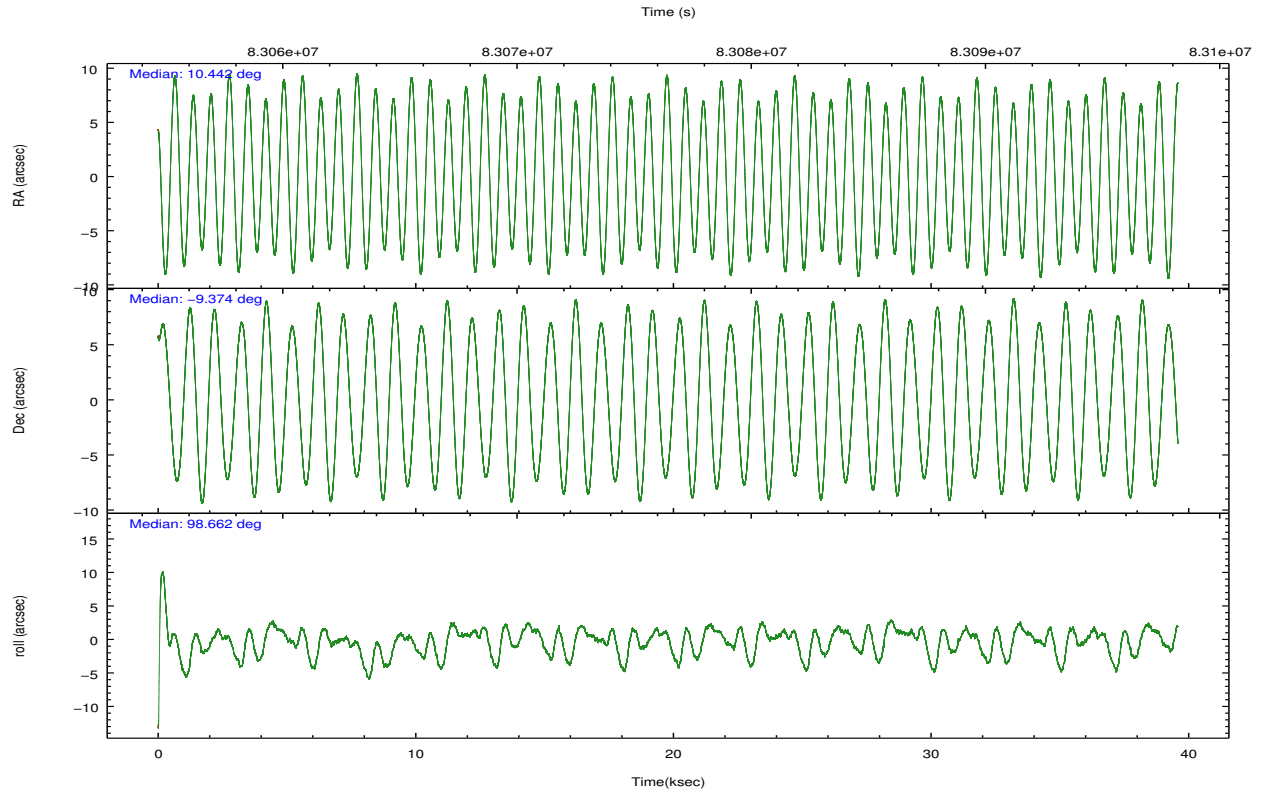
	ccd 0	ccd 1	ccd 2	ccd 3	ccd 6	ccd 7		ccd 0	ccd 1	ccd 2	ccd 3	ccd 6	ccd 7
level 1 events	444459	245255	313399	260291	243026	286706	grade 0 events	198478	37419	75076	37059	12093	12082
rejected events	190355	185817	209992	203660	215173	164995		44%	15%	23%	14%	4%	4%
rejected %	42%	75%	67%	78%	88%	57%	grade 1 events	838	206	349	200	92	242
								0%	0%	0%	0%	0%	0%
							grade 2 events	27869	8634	12813	7856	5336	23945
								6%	3%	4%	3%	2%	8%
							grade 3 events	8938	3776	4660	3332	2620	11228
								2%	1%	1%	1%	1%	3%
							grade 4 events	9097	3778	4617	3299	2681	11041
								2%	1%	1%	1%	1%	3%
							grade 5 events	8593	8512	7709	8460	9494	27446
								1%	3%	2%	3%	3%	9%
							grade 6 events	9766	5839	6261	5113	5130	63436
								2%	2%	1%	1%	2%	22%
							grade 7 events	180880	177091	201914	194972	205580	137286
								40%	72%	64%	74%	84%	47%

2.2 Compared Parameters

Parameter	Planned	Actual	Parameter	Planned	Actual
Instrument	ACIS	ACIS	Obspar format version number	7	7
Detector	ACIS-012367	ACIS-012367	Obspar file type	PREDICTED	ACTUAL
Grating	NONE	NONE	Obspar update status	NONE	UPDATED
Data mode	FAINT	FAINT	Number of optional ACIS chips dropped	0	0
Observation mode	POINTING	POINTING	On-chip summing requested	N	N
[deg] Pointing RA	10.459414	10.44206120775013	Subarray requested	NONE	NONE
[deg] Pointing Dec	-9.395985	-9.37440033112893	Alternating exposures requested	N	N
[deg] Pointing Roll	98.460700	98.66655373235578	[s] Primary exposure time	0.000000	3.2
[mm] SIM focus pos	-0.782348	-0.7809083437167272			
[mm] SIM defocus	0	0.001439871863259334			
[mm] SIM translation stage pos	-233.592463	-233.5899487761303			
[mm] SIM translation stage offset	0	-0.002504226799430853			
[s] Observation start time (MET)	83057273.184000	83056012.16042399			
Observation start date	2000-08-19T07:26:49	2000-08-19T07:06:52			
[s] Observation end time (MET)	83096238.184000	83097001.39946			
Observation end date	2000-08-19T18:16:14	2000-08-19T18:30:01			
Read mode	TIMED	TIMED			

2.3 Aspect



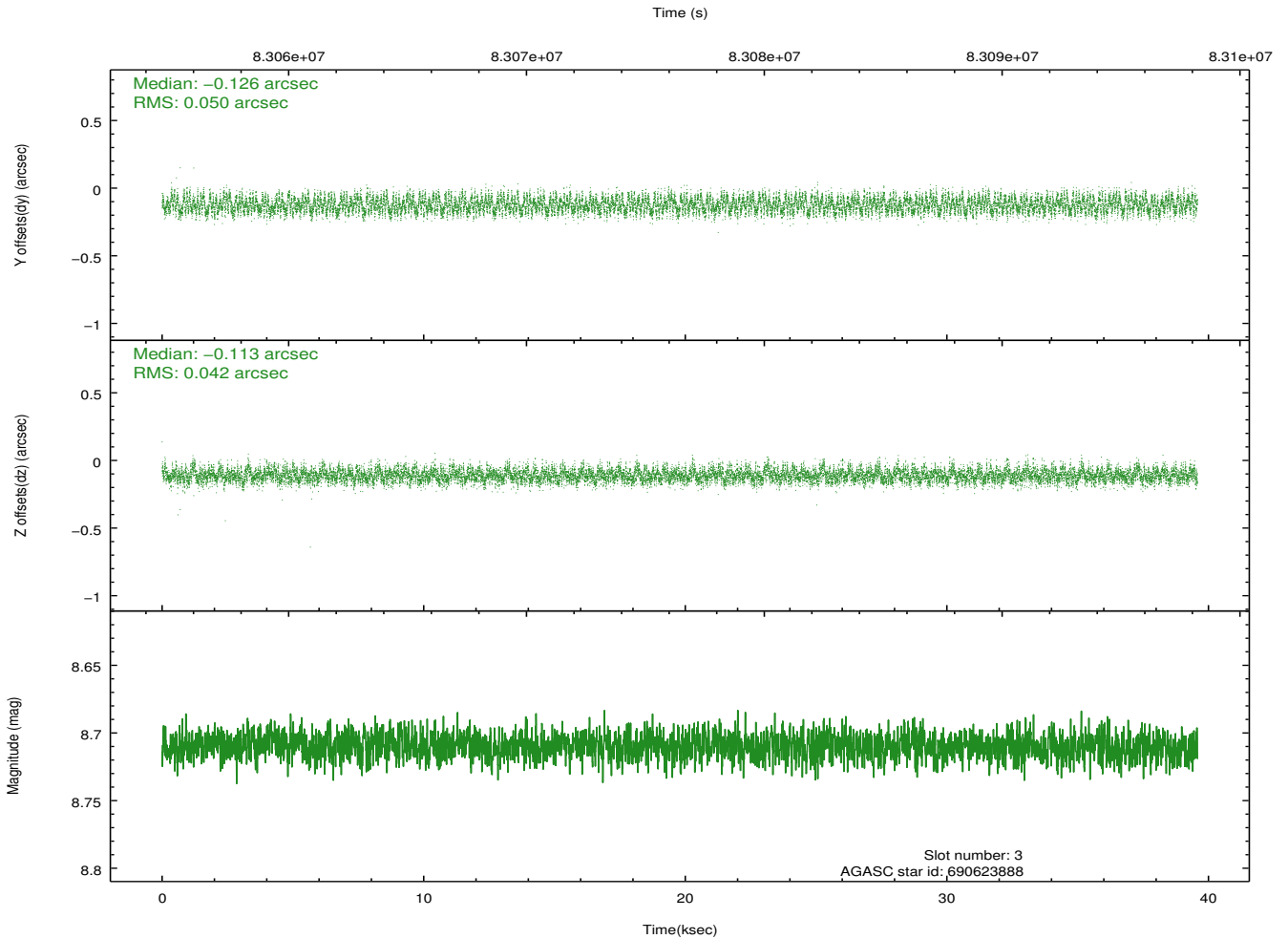
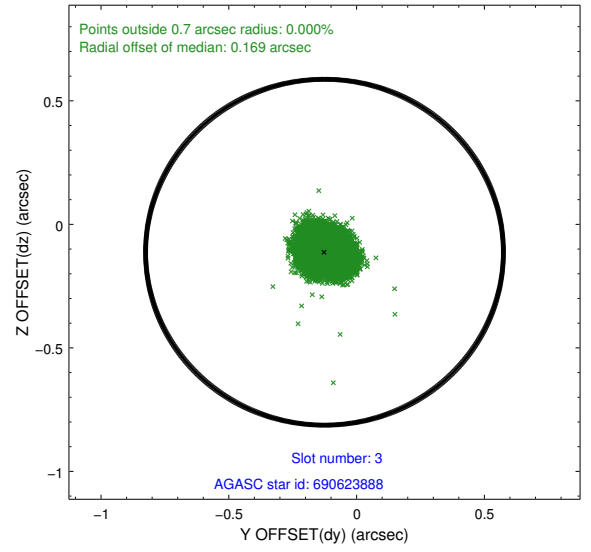
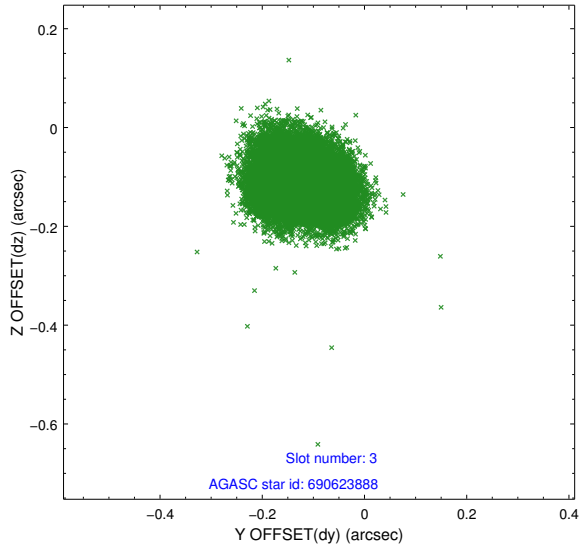


Slot Statistics

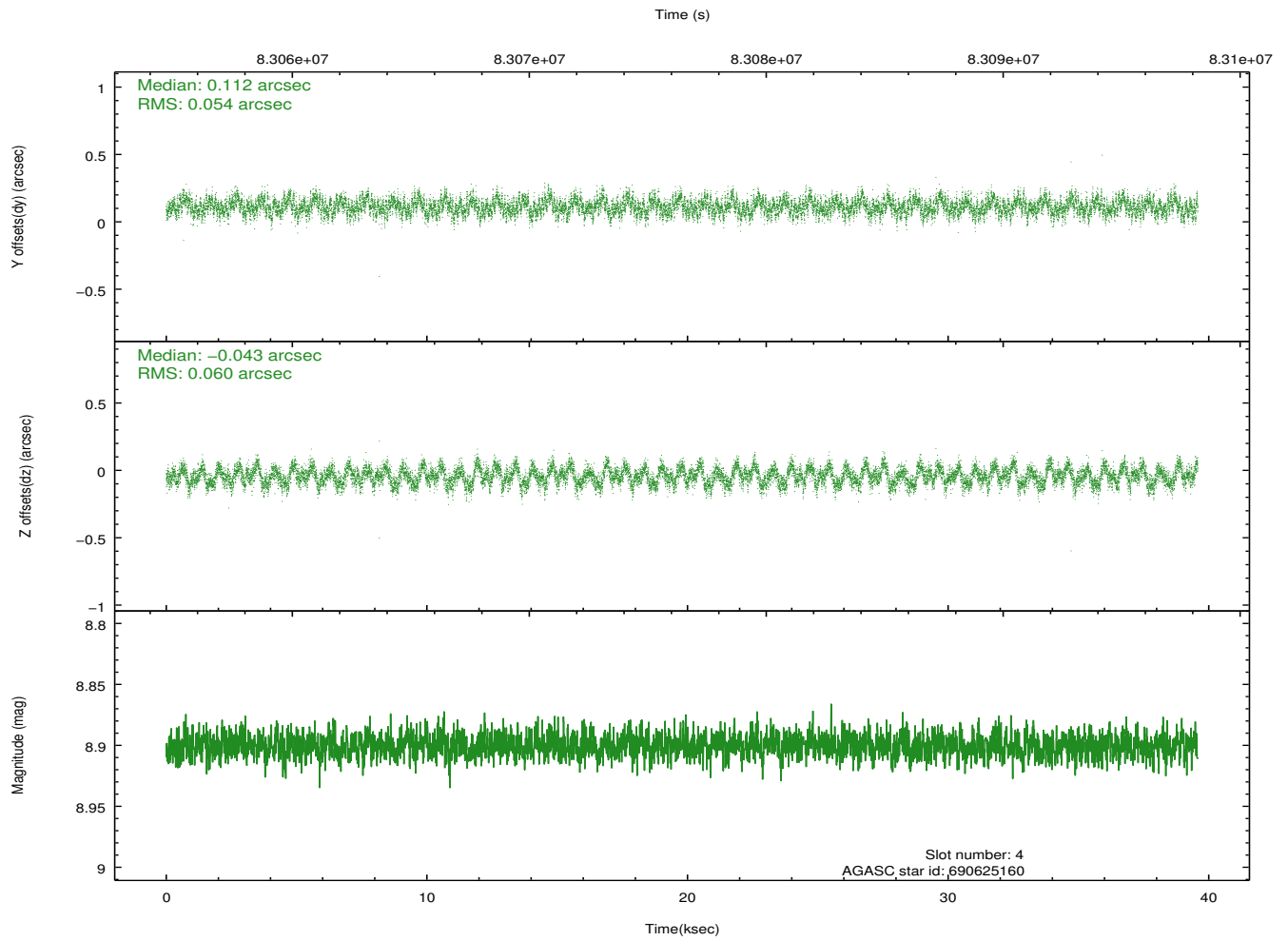
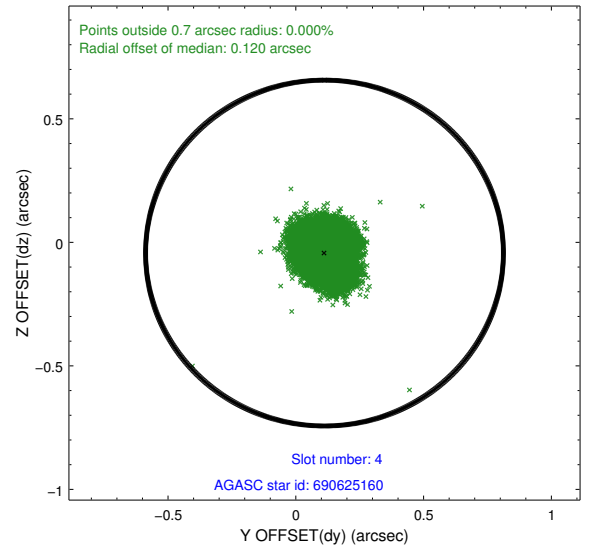
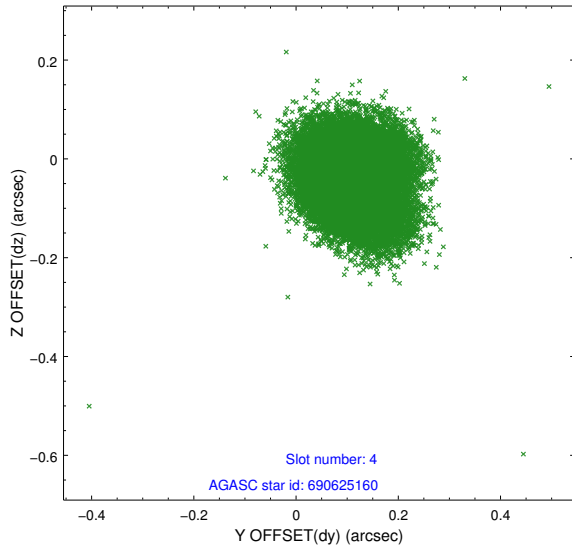
slot	status	id	mag	n_pts	med_dy	med_dz	dr1	dr2	ra	dec	mean_y	mean_z
0	FID	ACIS-I-2	7.15	9651	-0.053	-0.008	0.006	0.011	0.000000	0.000000	-755.58	-834.34
1	FID	ACIS-I-4	7.19	9652	-0.037	0.032	0.008	0.013	0.000000	0.000000	2158.47	1071.89
2	FID	ACIS-I-6	7.27	9653	-0.010	0.039	0.009	0.016	0.000000	0.000000	404.55	1714.08
3	GUIDE	690623888	8.71	19302	-0.126	-0.113	0.070	0.109	10.089843	-9.212040	847.29	1201.80
4	GUIDE	690625160	8.90	19298	0.112	-0.043	0.087	0.135	10.224219	-9.960066	-1886.16	1123.76
5	GUIDE	690632656	9.26	19298	0.031	-0.049	0.064	0.105	10.397747	-9.674983	-961.42	364.35
6	GUIDE	690623960	9.32	19301	-0.014	0.052	0.076	0.125	10.570675	-9.168103	753.16	-511.51
7	GUIDE	690635712	9.43	19290	-0.006	0.154	0.086	0.143	10.993747	-9.443521	-449.77	-1851.23

2.4 Star Slots

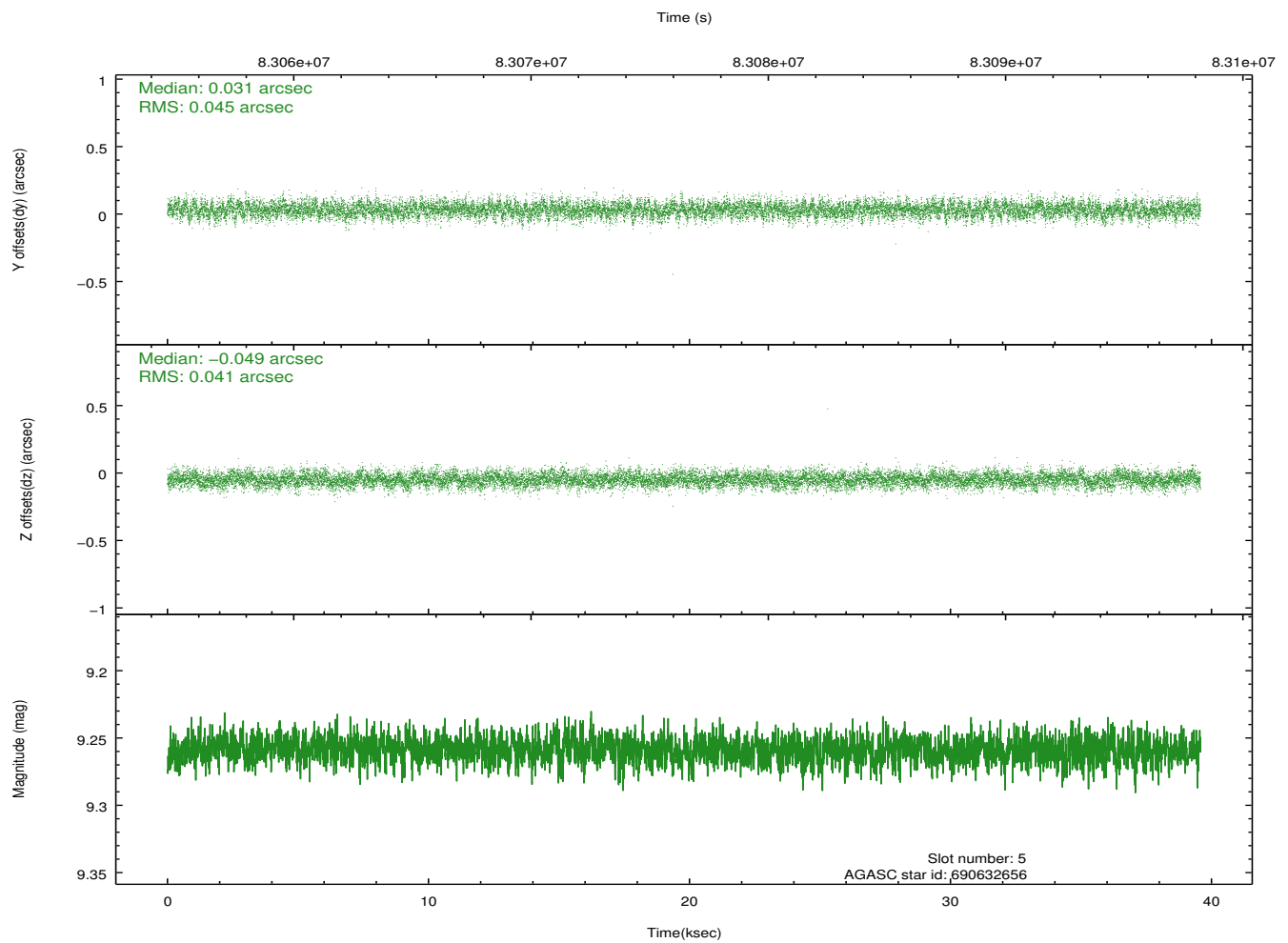
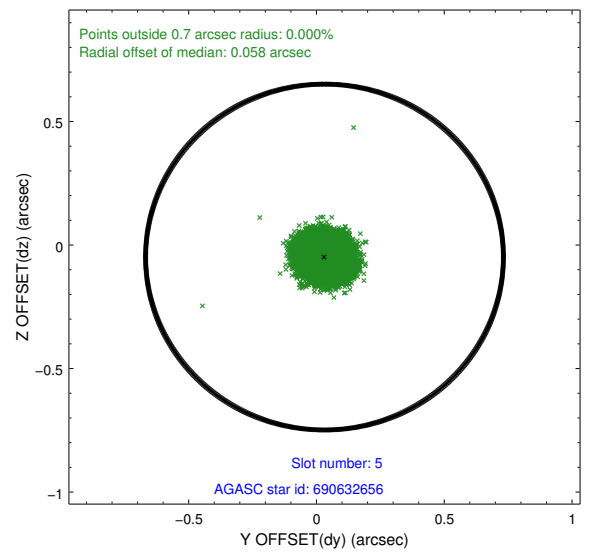
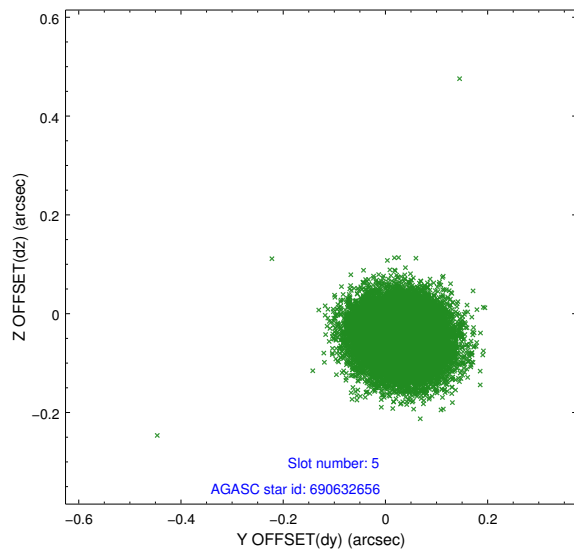
2.4.1 Slot 3



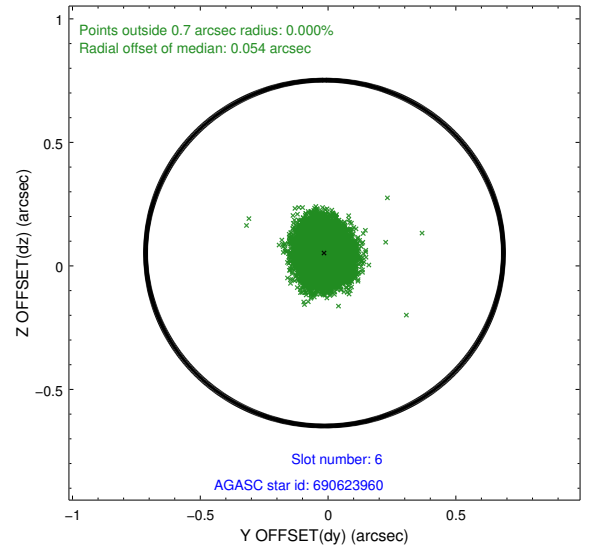
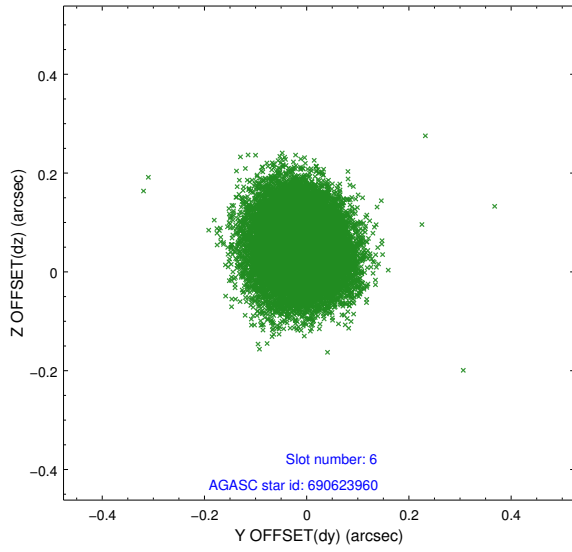
2.4.2 Slot 4



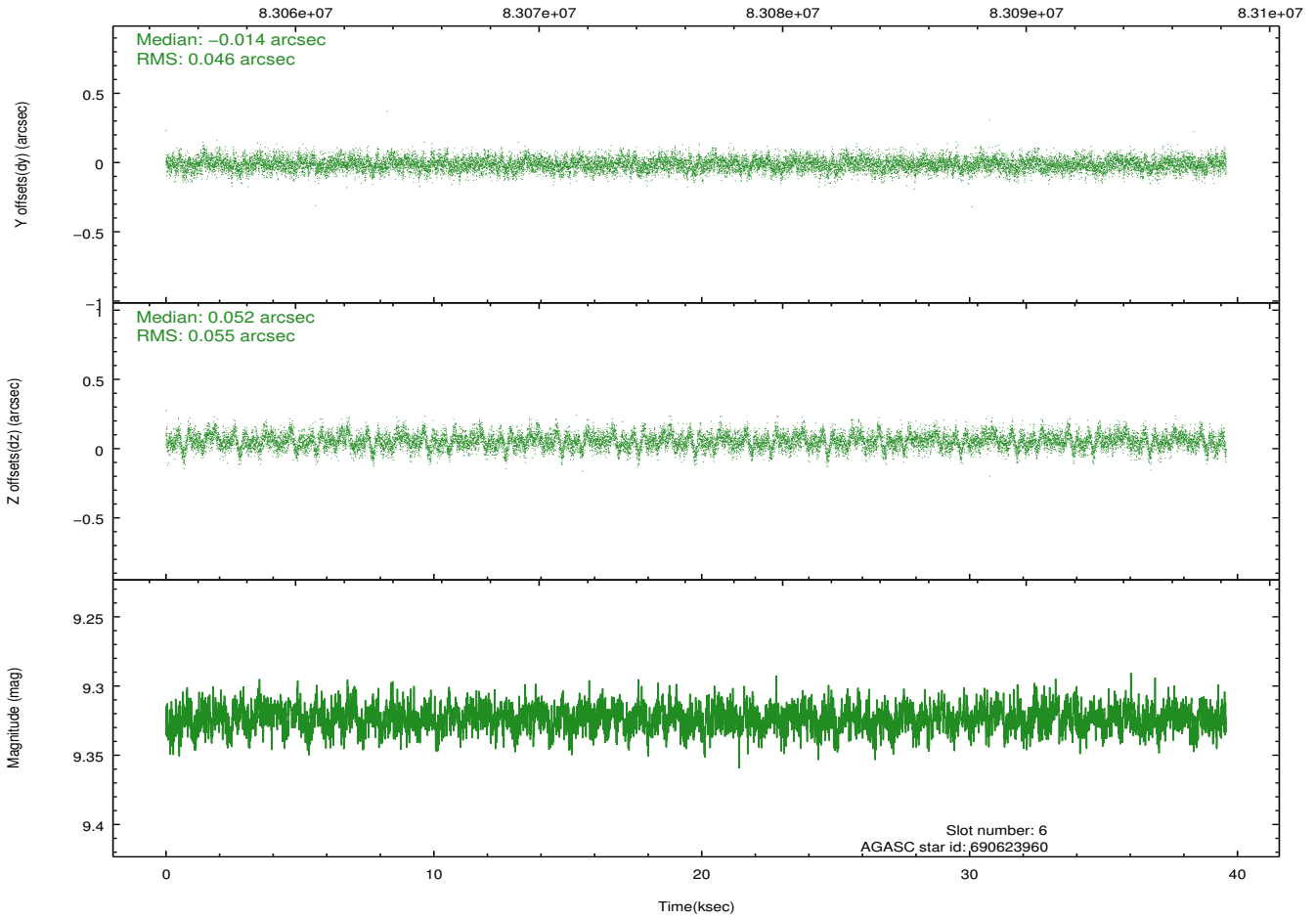
2.4.3 Slot 5



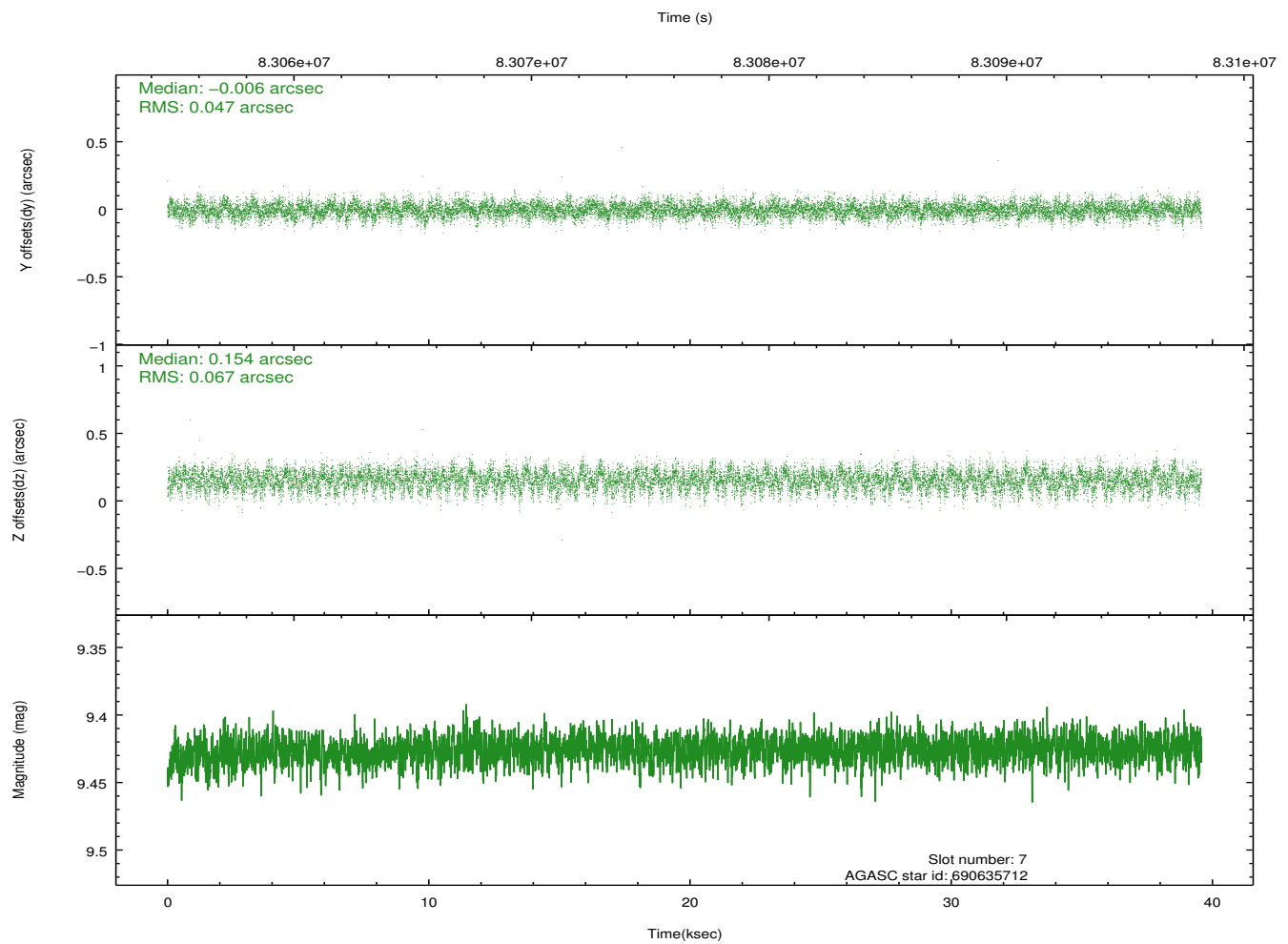
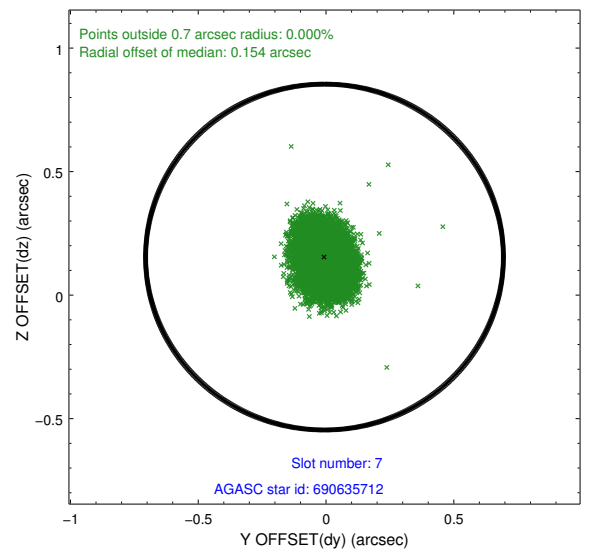
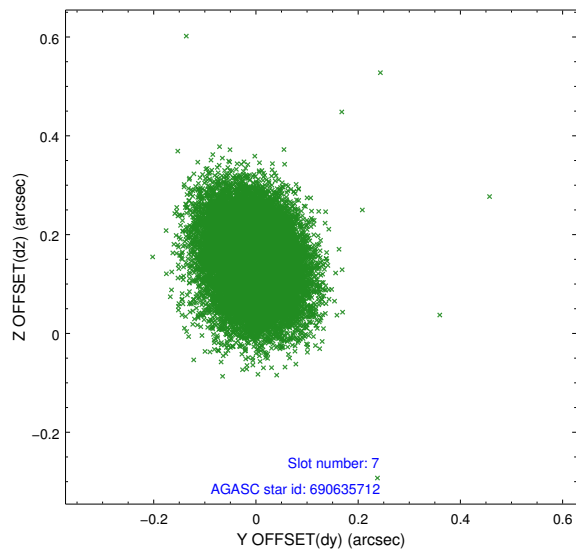
2.4.4 Slot 6



Time (s)

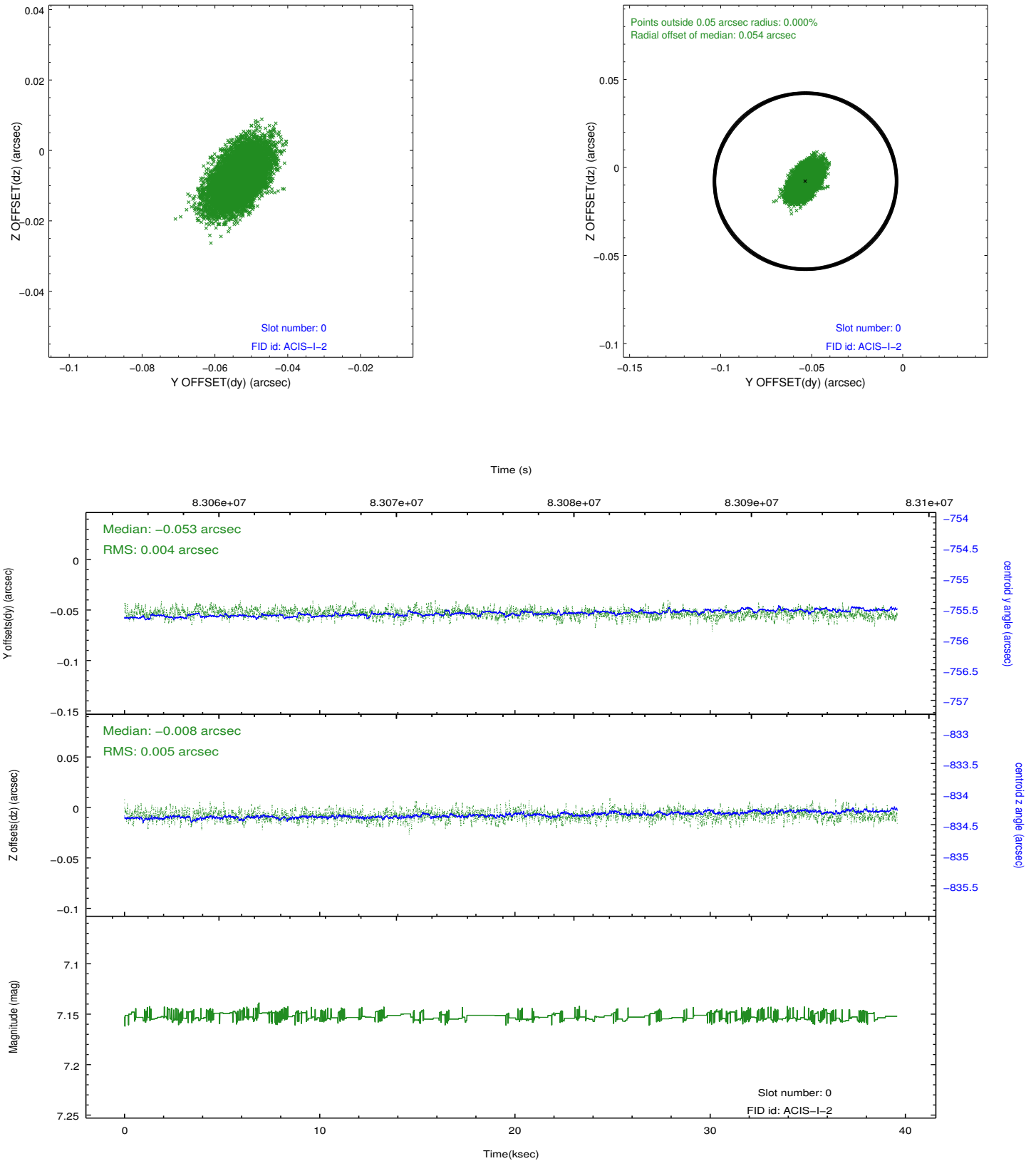


2.4.5 Slot 7

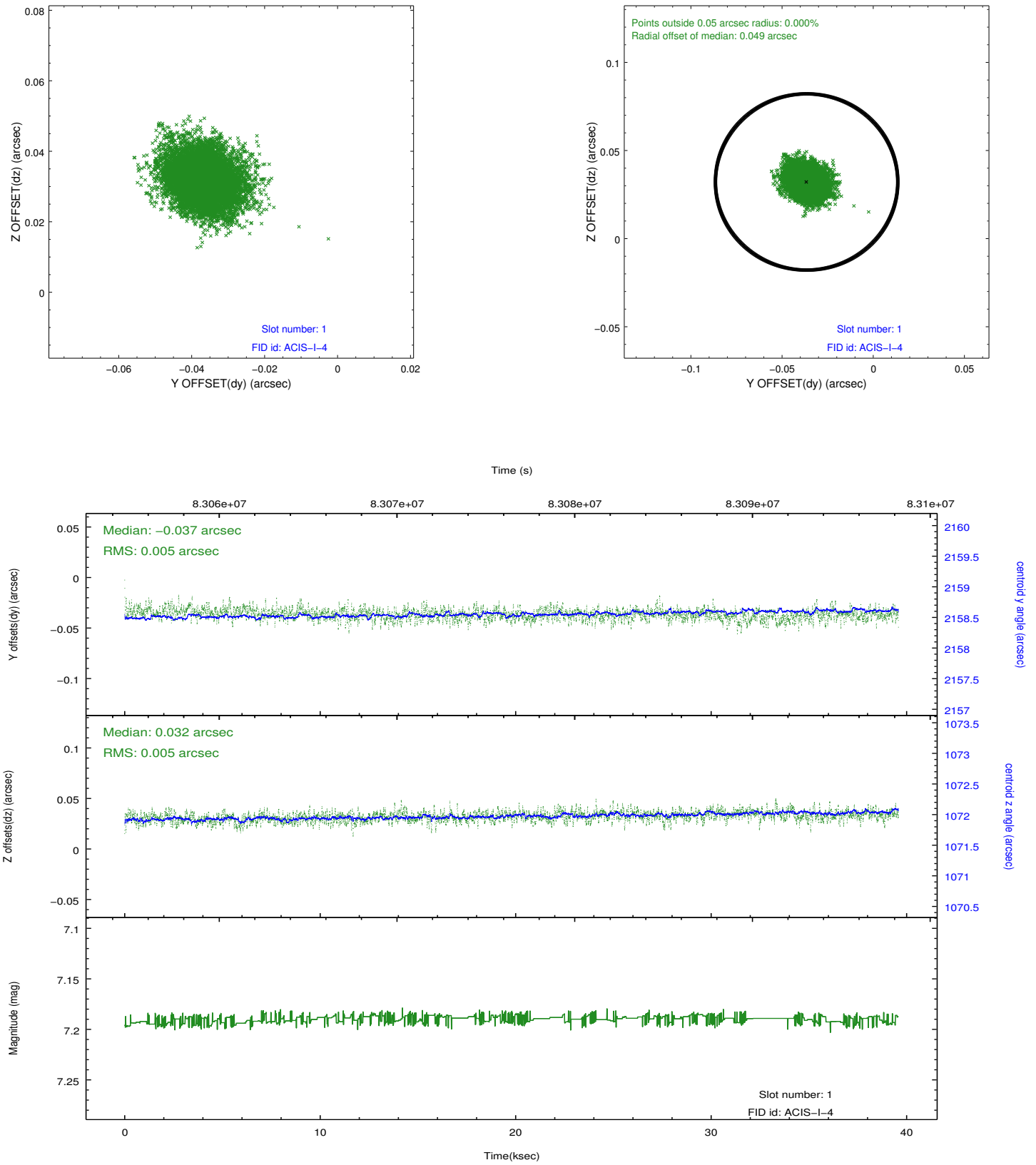


2.5 FID Slots

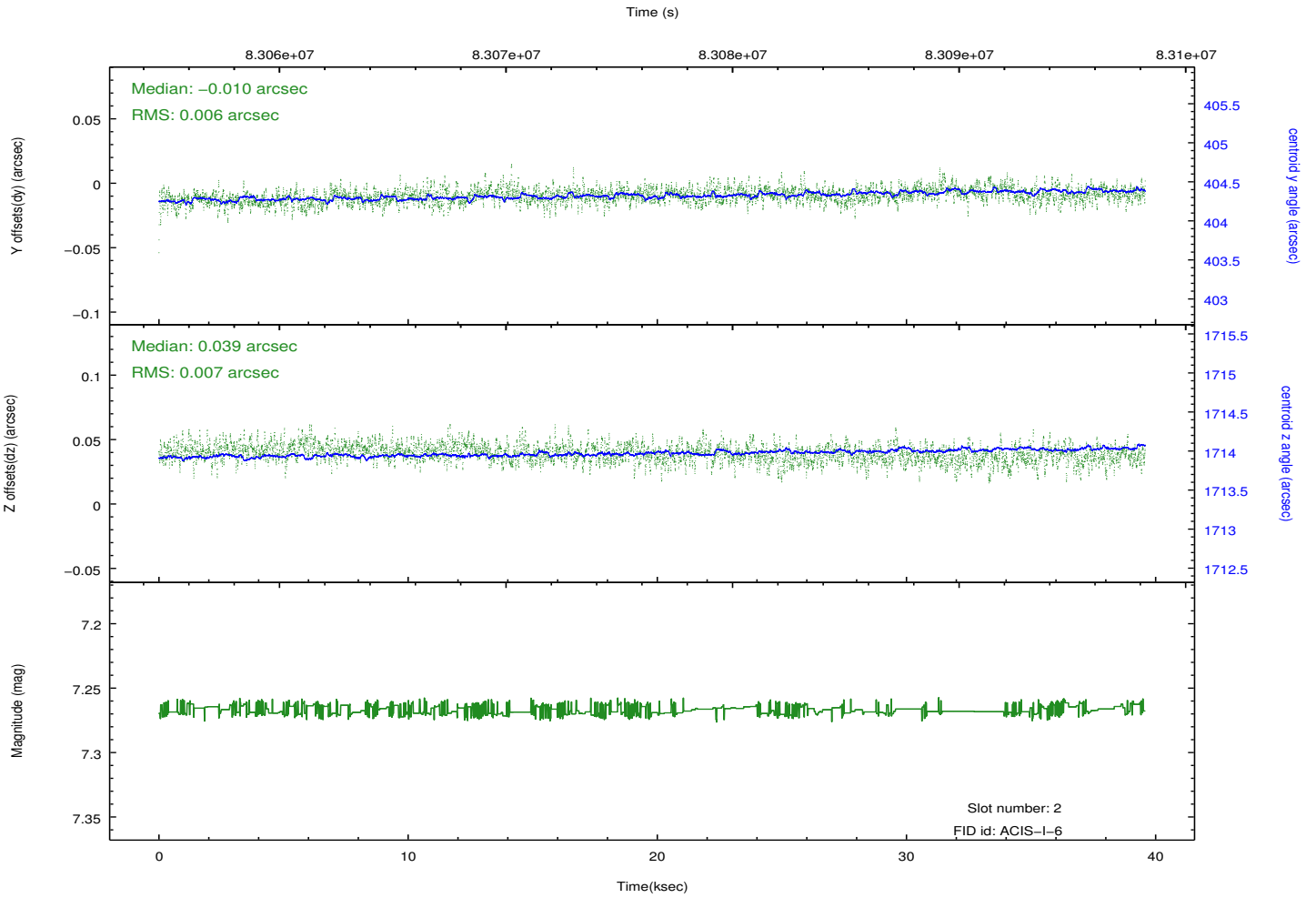
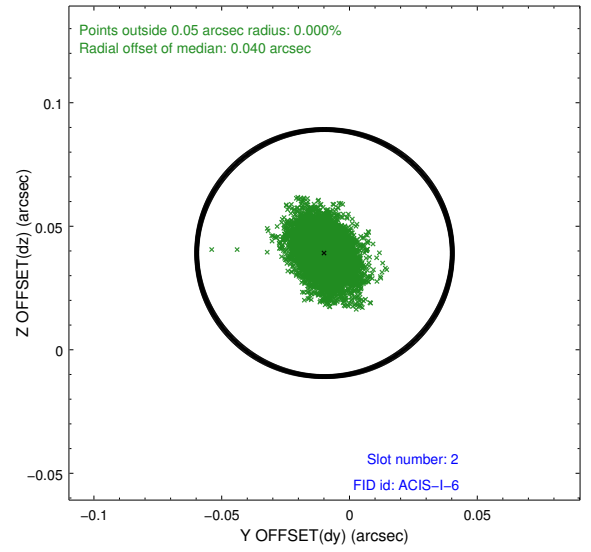
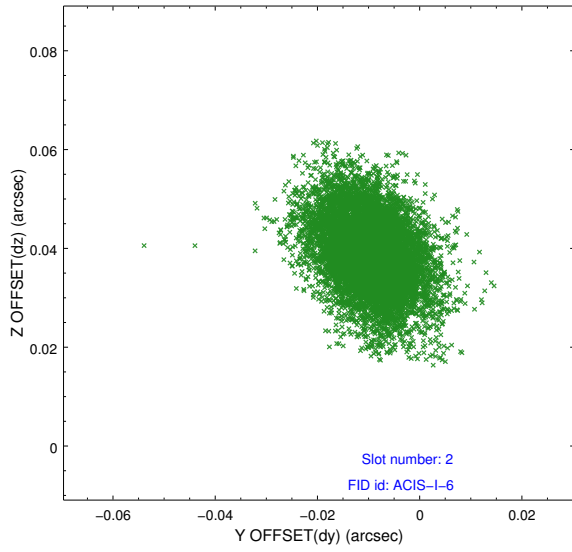
2.5.1 Slot 0



2.5.2 Slot 1



2.5.3 Slot 2



A Summary

A.1 Status

V&V Scientist	Jen Lauer
V&V Date (YYYY-MM-DD)	2012.09.06
V&V Edition	1
V&V Disposition and Status	OK
V&V Charge Time	38.915

A.2 Comments