

# V&V Reference Report

## L2 ASCDS Version : 8.4.4

Observation 9134 - L2 Version 2  
Chandra X-Ray Center

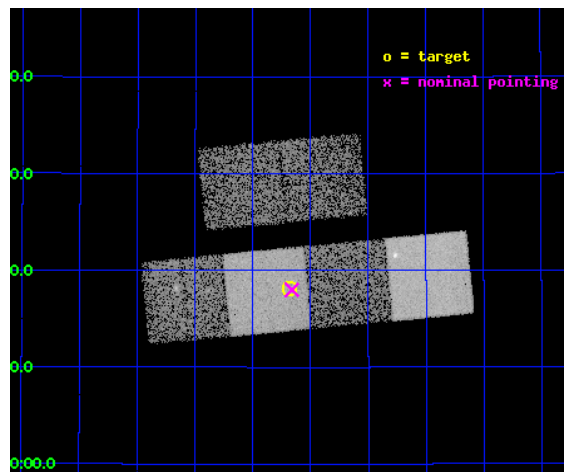
L2 Processing Date : May 13 2012

## Contents

<b>1</b>	<b>Front</b>	<b>2</b>
<b>2</b>	<b>OBI</b>	<b>3</b>
2.1	OBI . . . . .	3
2.1.1	Images . . . . .	3
2.1.2	Bias . . . . .	3
2.1.3	Parameters . . . . .	4
2.1.4	Events . . . . .	4
2.2	Compared Parameters . . . . .	5
2.3	Aspect . . . . .	6
2.4	Star Slots . . . . .	9
2.4.1	Slot 3 . . . . .	9
2.4.2	Slot 4 . . . . .	10
2.4.3	Slot 5 . . . . .	11
2.4.4	Slot 6 . . . . .	12
2.4.5	Slot 7 . . . . .	13
2.5	FID Slots . . . . .	14
2.5.1	Slot 0 . . . . .	14
2.5.2	Slot 1 . . . . .	15
2.5.3	Slot 2 . . . . .	16
<b>A</b>	<b>Summary</b>	<b>17</b>
A.1	Status . . . . .	17
A.2	Comments . . . . .	17

# 1 Front

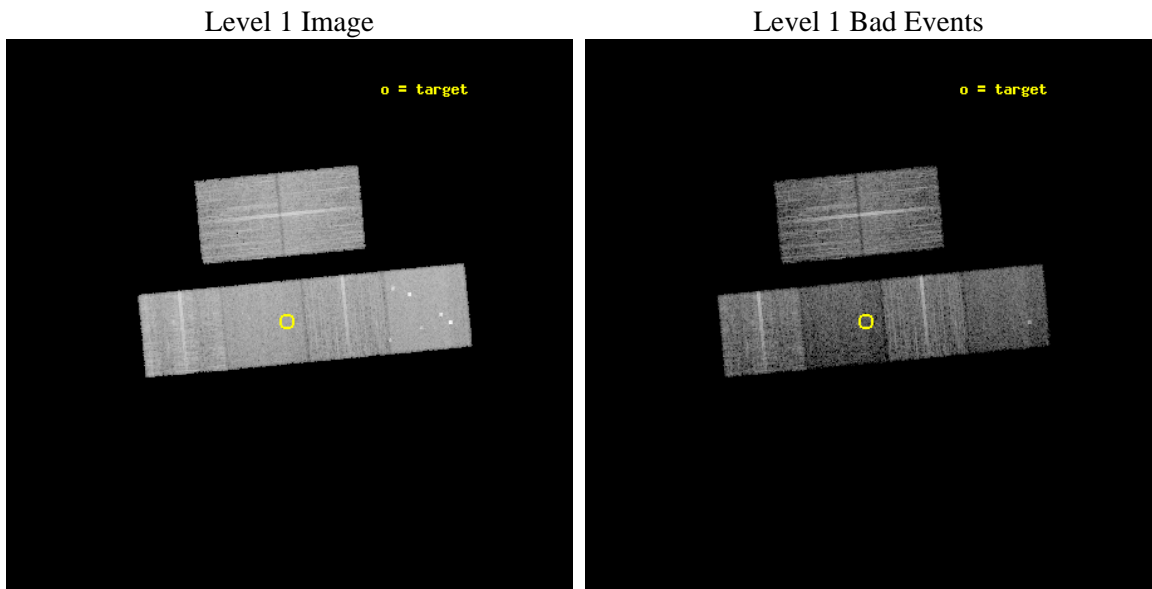
seq_num	500995	Sequence number
obs_id	9134	Observation id
title	Constraining GRB physics through their afterglow light curves	Prop
observer	Dr Evert Rol	Principal investigator
object	GRB080319B	Source name
dtcycle	0	&#160
cycle	P	events from which exps? Prim/Second/Both
ra_targ	217.920708	Observer's specified target RA [deg]
dec_targ	36.302194	Observer's specified target Dec [deg]
ra_nom	217.91539258532	Nominal RA [deg]
dec_nom	36.300069583519	Nominal Dec [deg]
roll_nom	174.5083774791	Nominal Roll [deg]
revision	2	Processing version of data
ontime	9045.4193855524	Sum of GTIs [s]
livetime	8930.8808387949	Livetime [s]
ontime2	9035.7373745441	Sum of GTIs [s]
ontime3	9042.0552451611	Sum of GTIs [s]
ontime5	9045.3783455491	Sum of GTIs [s]
ontime6	9045.3373055458	Sum of GTIs [s]
ontime7	9045.4193855524	Sum of GTIs [s]
ontime8	9042.014195323	Sum of GTIs [s]
l2events	95858	Number of level 2 events



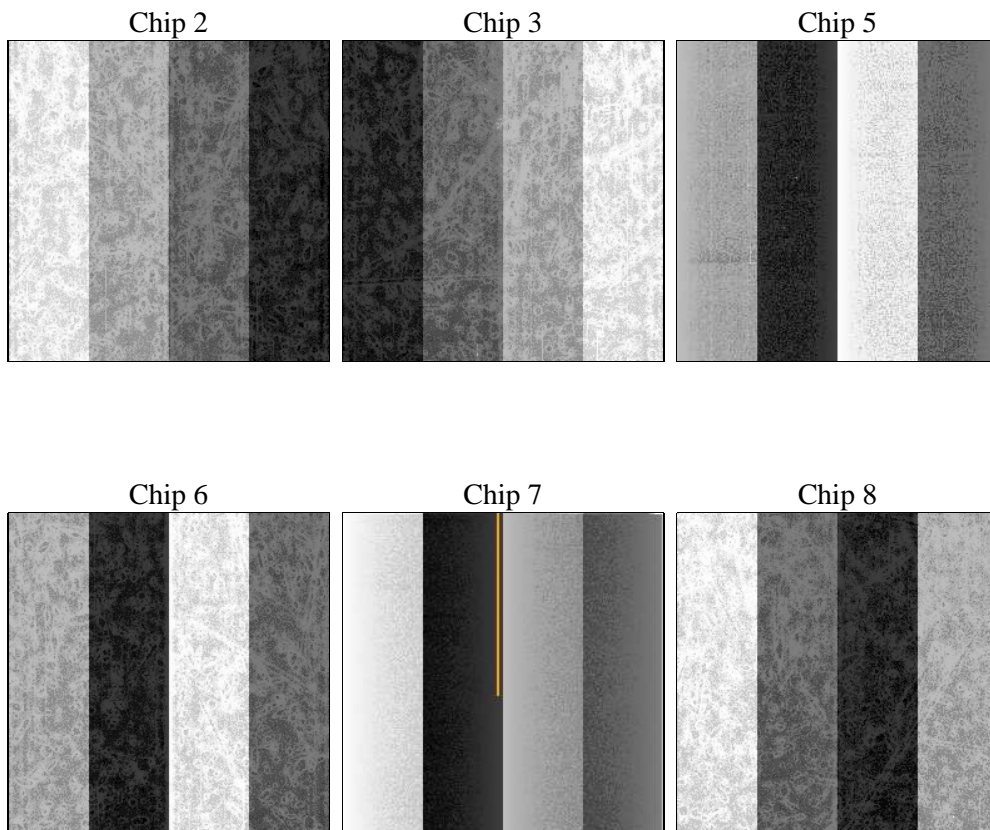
## 2 OBI

### 2.1 OBI

#### 2.1.1 Images



#### 2.1.2 Bias



### 2.1.3 Parameters

obi_num	0	Obi number	sched_exp_time	9000.000000	[s] Scheduled observation exposure time
ascdsver	8.4.4	Processing system revision	ontime	9045.4193855524	Sum of GTIs [s]
caldbver	4.4.9	&#160	ontime2	9035.7373745441	Sum of GTIs [s]
date	2012-05-13T12:40:49	Date and time of file creation	ontime3	9042.0552451611	Sum of GTIs [s]
revision	2	Processing version of data	ontime5	9045.3783455491	Sum of GTIs [s]
			ontime6	9045.3373055458	Sum of GTIs [s]
			ontime7	9045.4193855524	Sum of GTIs [s]
			ontime8	9042.014195323	Sum of GTIs [s]
			l1events	435154	Number of level 1 events

### 2.1.4 Events

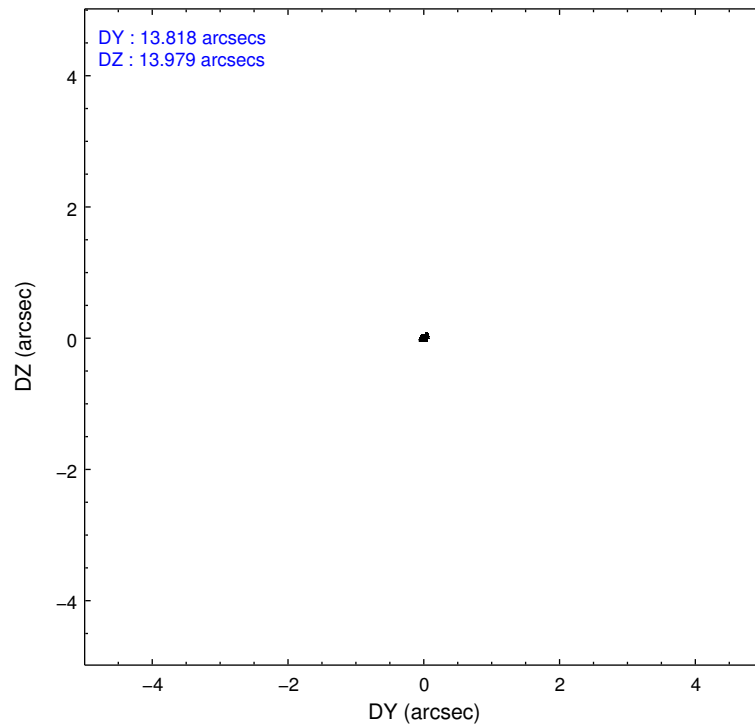
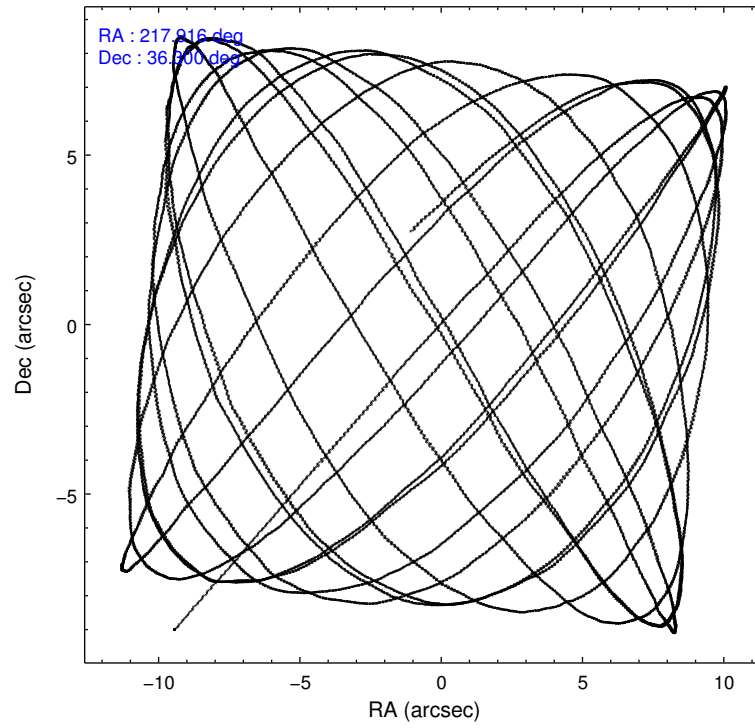
	ccd 2	ccd 3	ccd 5	ccd 6	ccd 7	ccd 8
level 1 events	69591	65353	88532	65125	64623	81930
rejected events	63289	59389	39980	58484	32866	61176
rejected %	90%	90%	45%	89%	50%	74%

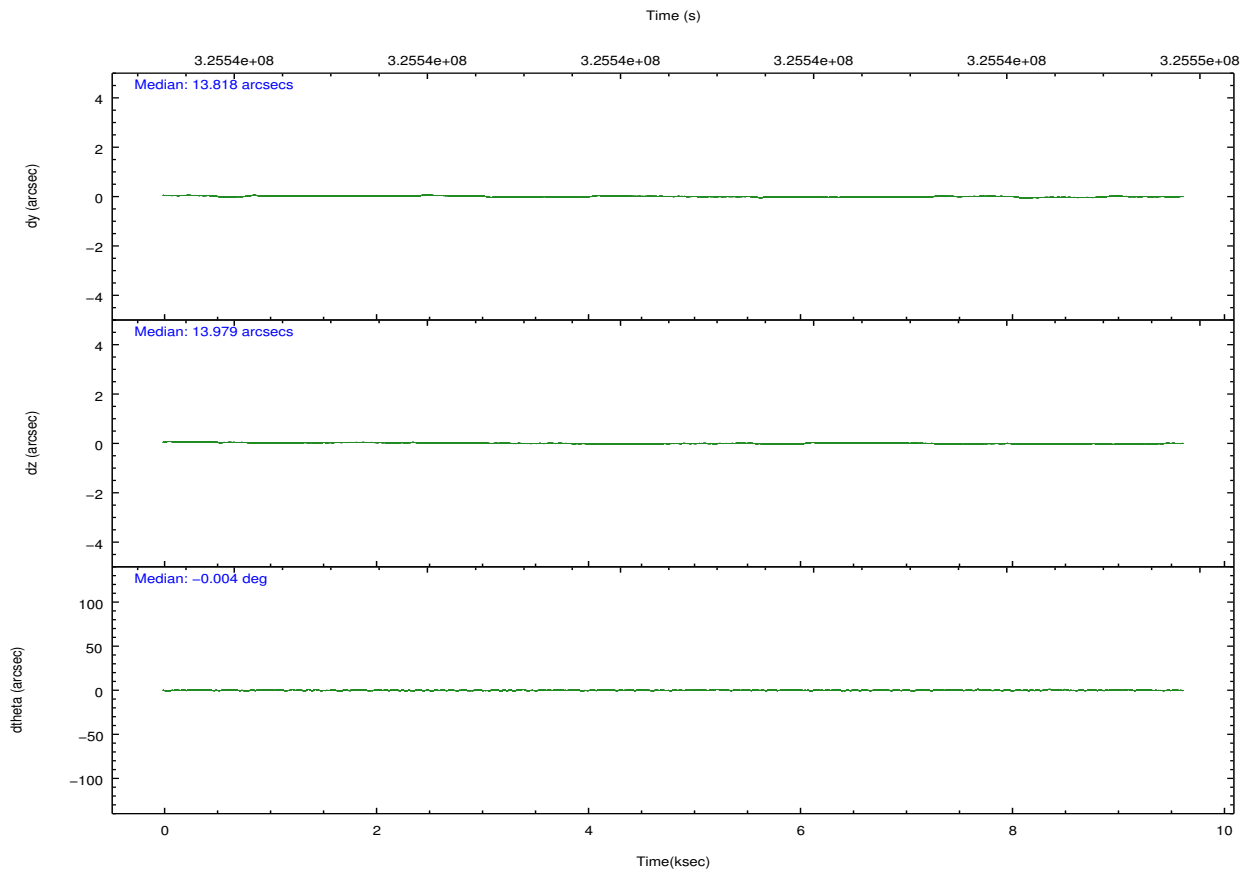
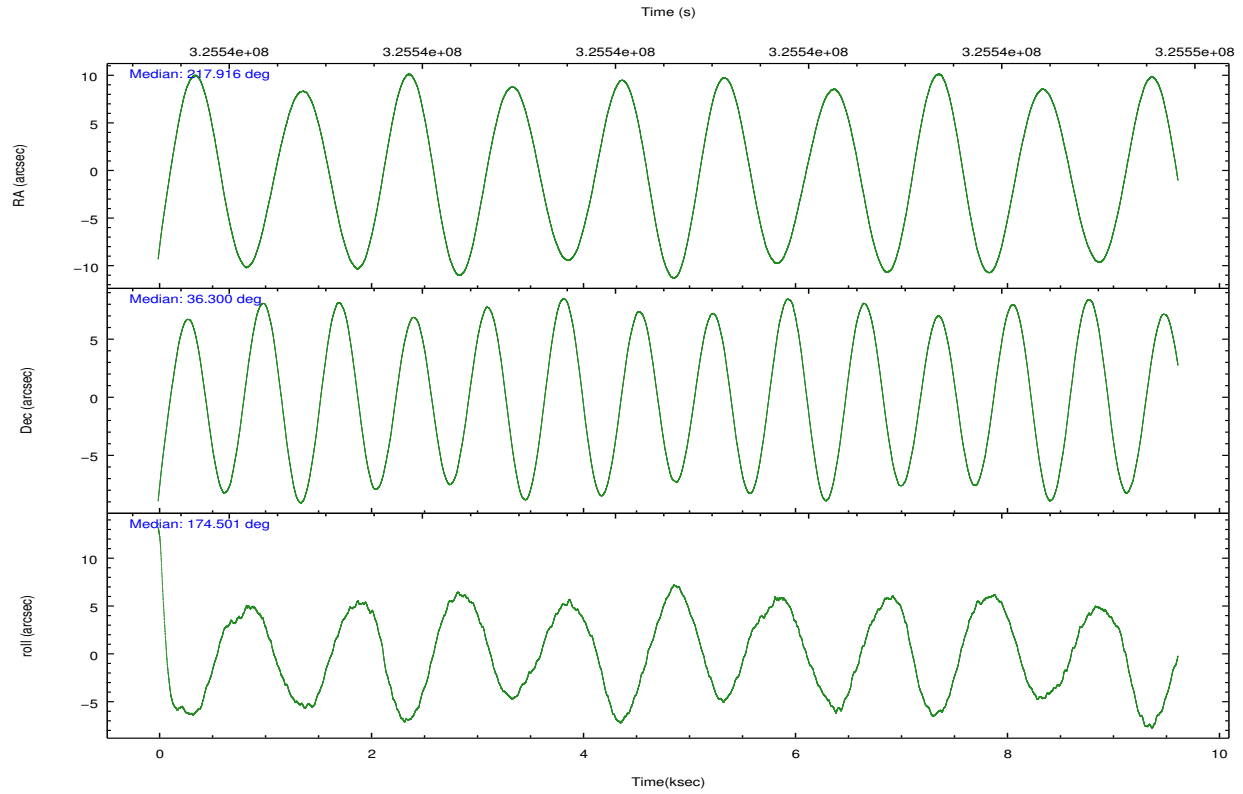
	ccd 2	ccd 3	ccd 5	ccd 6	ccd 7	ccd 8
grade 0 events	2329	2135	8236	2422	3293	5759
	3%	3%	9%	3%	5%	7%
grade 1 events	48	39	468	38	89	74
	0%	0%	0%	0%	0%	0%
grade 2 events	1514	1353	13874	1435	6715	4857
	2%	2%	15%	2%	10%	5%
grade 3 events	691	701	1985	726	2881	2272
	0%	1%	2%	1%	4%	2%
grade 4 events	649	665	2018	714	2994	2098
	0%	1%	2%	1%	4%	2%
grade 5 events	1967	2258	6894	2374	7076	3567
	2%	3%	7%	3%	10%	4%
grade 6 events	1120	1111	22459	1346	15881	5796
	1%	1%	25%	2%	24%	7%
grade 7 events	61273	57091	32598	56070	25694	57507
	88%	87%	36%	86%	39%	70%

## 2.2 Compared Parameters

Parameter	Planned	Actual	Parameter	Planned	Actual
Instrument	ACIS	ACIS	Obspar format version number	7	7
Detector	ACIS-235678	ACIS-235678	Obspar file type	PREDICTED	ACTUAL
Grating	NONE	NONE	Obspar update status	NONE	UPDATED
Data mode	VFAINT	VFAINT	CCD I0 on	N	N
Observation mode	POINTING	POINTING	CCD I1 on	N	N
[deg] Pointing RA	217.945987	217.9153925853232	CCD I2 on	O1	Y
[deg] Pointing Dec	36.311726	36.30006958351861	CCD I3 on	O3	Y
[deg] Pointing Roll	174.333628	174.5083774791021	CCD S0 on	N	N
[mm] SIM focus pos	-0.684267	-0.6828225247311905	CCD S1 on	O2	Y
[mm] SIM defocus	0	0.001444936568705701	CCD S2 on	O5	Y
[mm] SIM translation stage pos	-190.132523	-190.145094680475	CCD S3 on	Y	Y
[mm] SIM translation stage offset	0	0.01257209746719923	CCD S4 on	O4	Y
[s] Observation start time (MET)	325536352.184000	325534980.20125	CCD S5 on	N	N
Observation start date	2008-04-25T18:44:47	2008-04-25T18:23:00	Number of optional ACIS chips dropped	0	0
[s] Observation end time (MET)	325545352.184000	325545890.81428	On-chip summing requested	N	N
Observation end date	2008-04-25T21:14:47	2008-04-25T21:24:50	Subarray requested	NONE	NONE
Read mode	TIMED	TIMED	Alternating exposures requested	N	N
			[s] Primary exposure time	0.000000	3.2

## 2.3 Aspect



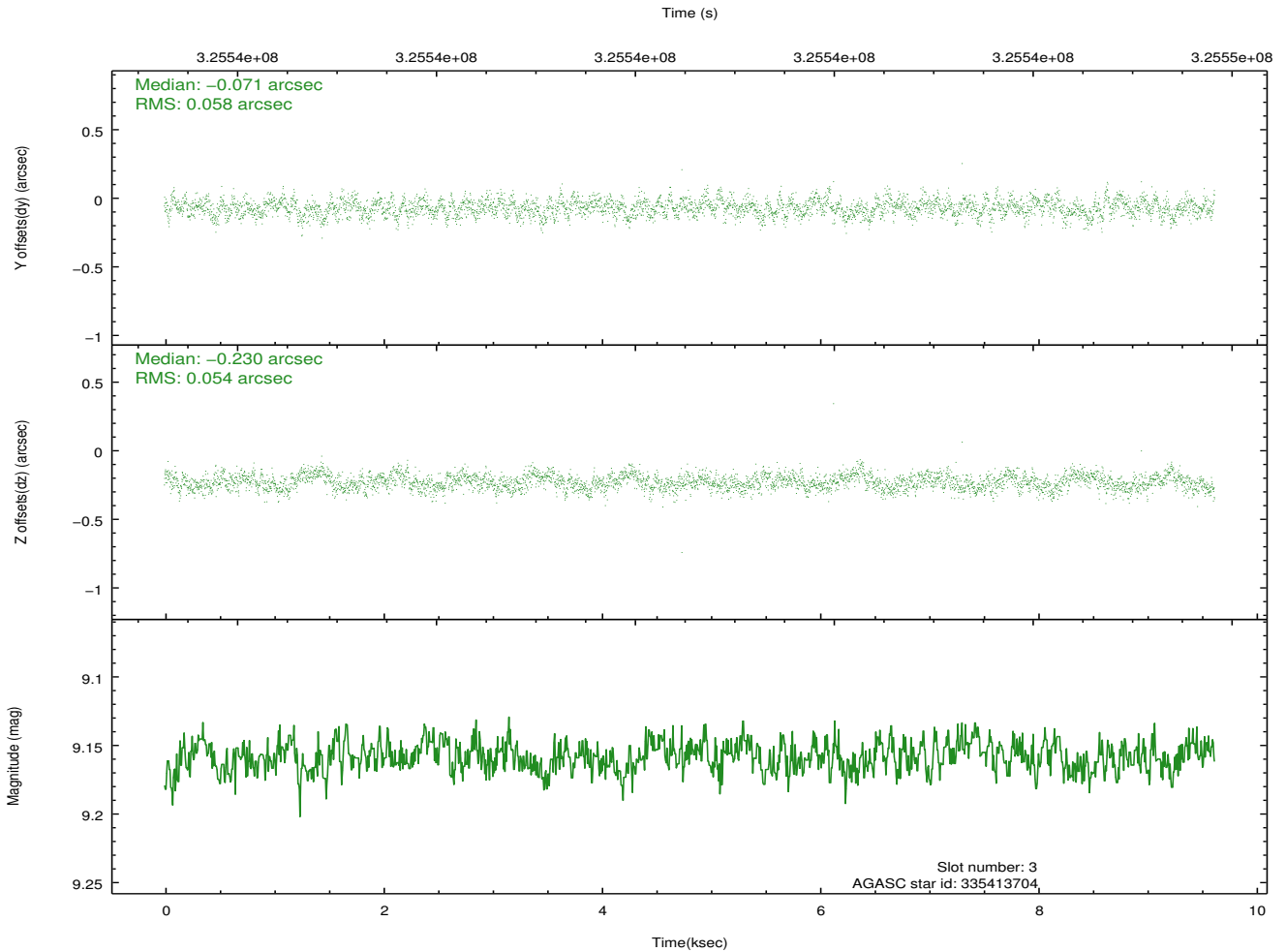
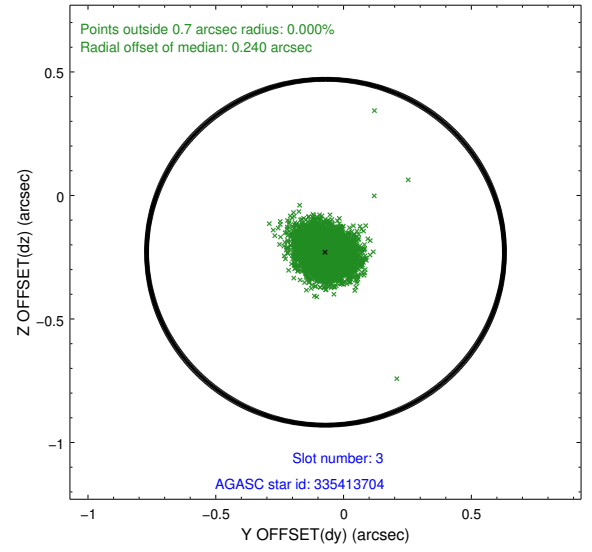
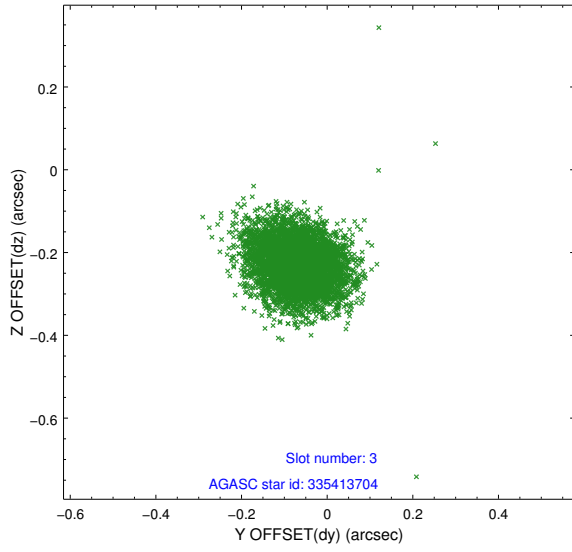


### Slot Statistics

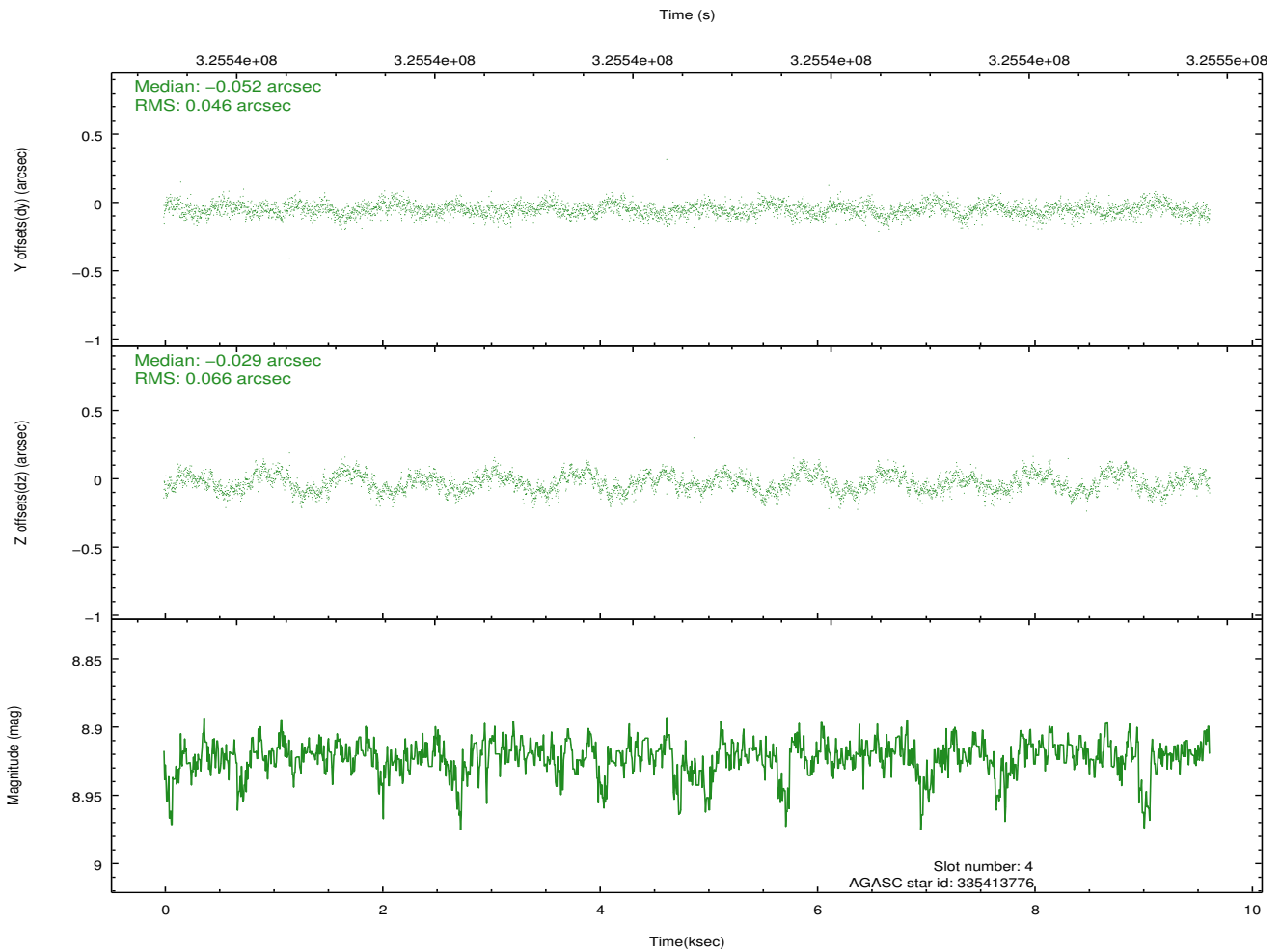
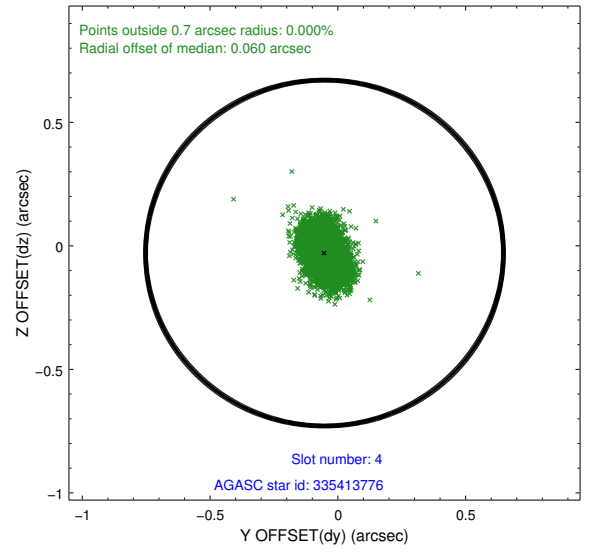
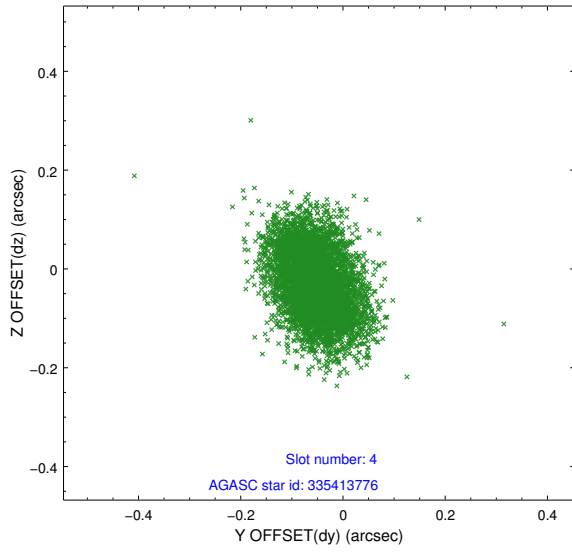
slot	status	id	mag	n_pts	med_dy	med_dz	dr1	dr2	ra	dec	mean_y	mean_z
0	FID	ACIS-S-2	6.97	2347	-0.048	-0.036	0.007	0.011	0.000000	0.000000	-766.80	-1735.27
1	FID	ACIS-S-4	7.05	2347	0.156	0.033	0.006	0.011	0.000000	0.000000	2146.42	172.71
2	FID	ACIS-S-5	7.09	2347	-0.140	0.012	0.006	0.010	0.000000	0.000000	-1819.02	166.99
3	GUIDE	335413704	9.16	4685	-0.071	-0.230	0.084	0.136	217.443182	36.847921	1633.18	-1781.44
4	GUIDE	335413776	8.92	4690	-0.052	-0.029	0.086	0.139	218.421411	36.051962	-1467.81	790.18
5	GUIDE	335418792	9.68	4689	0.184	0.113	0.109	0.180	217.469762	36.446912	1421.24	-350.81
6	GUIDE	335421608	9.18	4684	-0.023	0.146	0.085	0.138	217.691874	36.359353	751.53	-98.57
7	GUIDE	335421696	8.95	4692	-0.040	-0.001	0.091	0.143	218.045699	35.772449	-481.48	1903.45

## 2.4 Star Slots

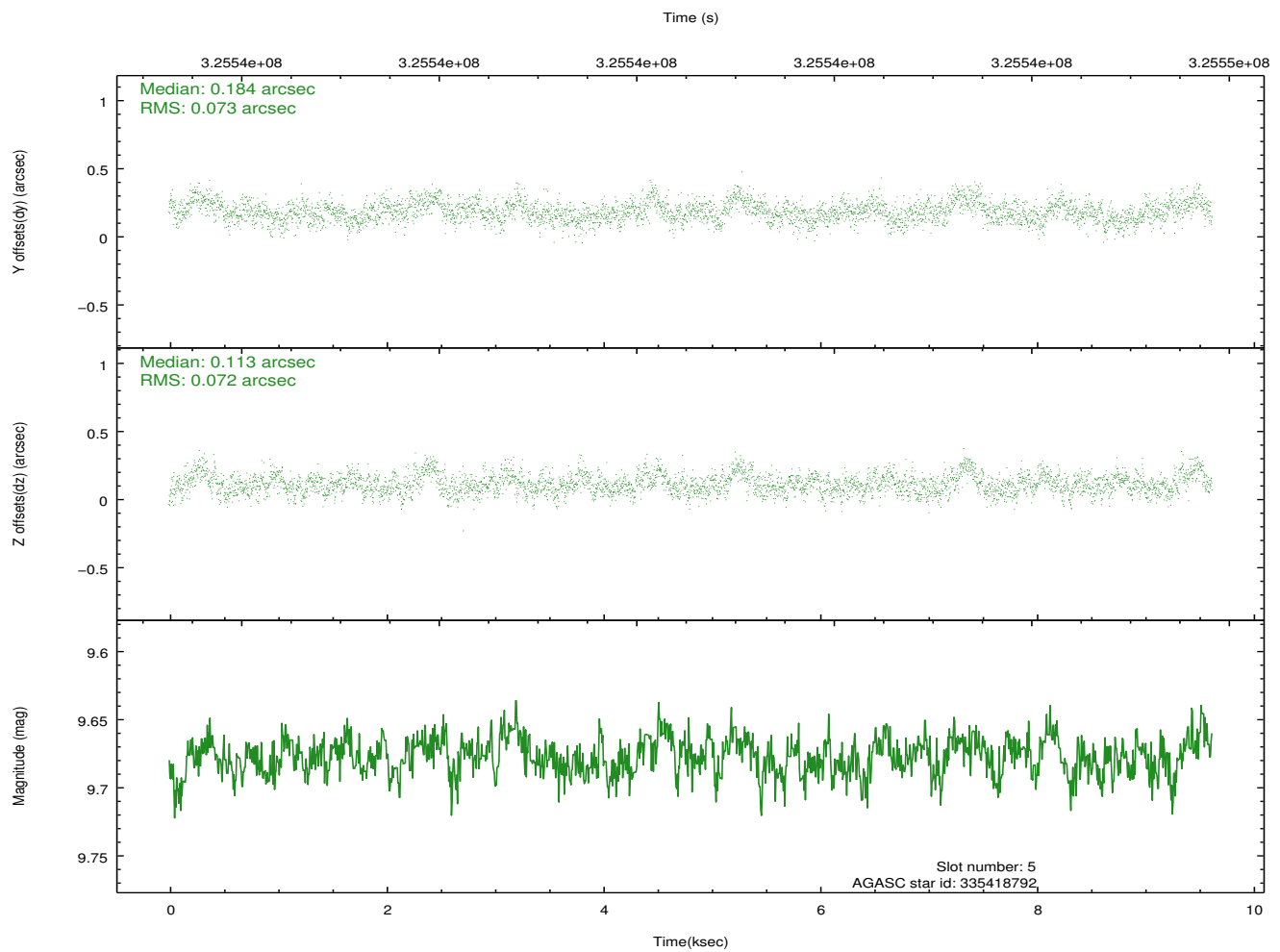
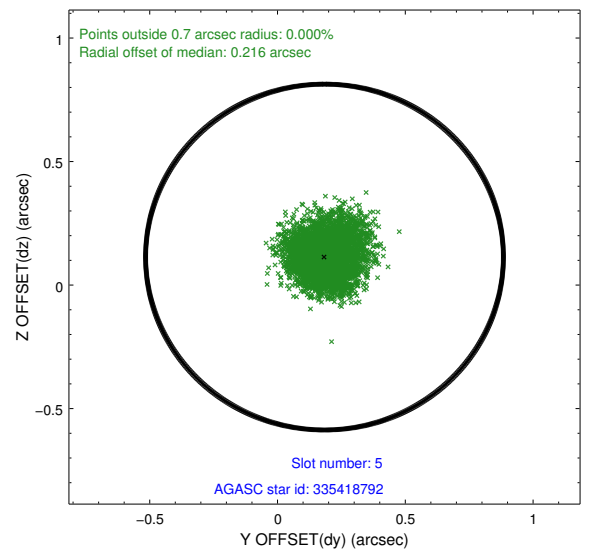
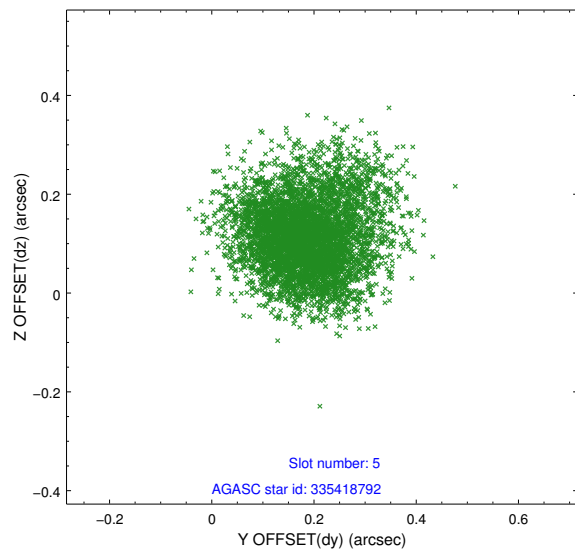
### 2.4.1 Slot 3



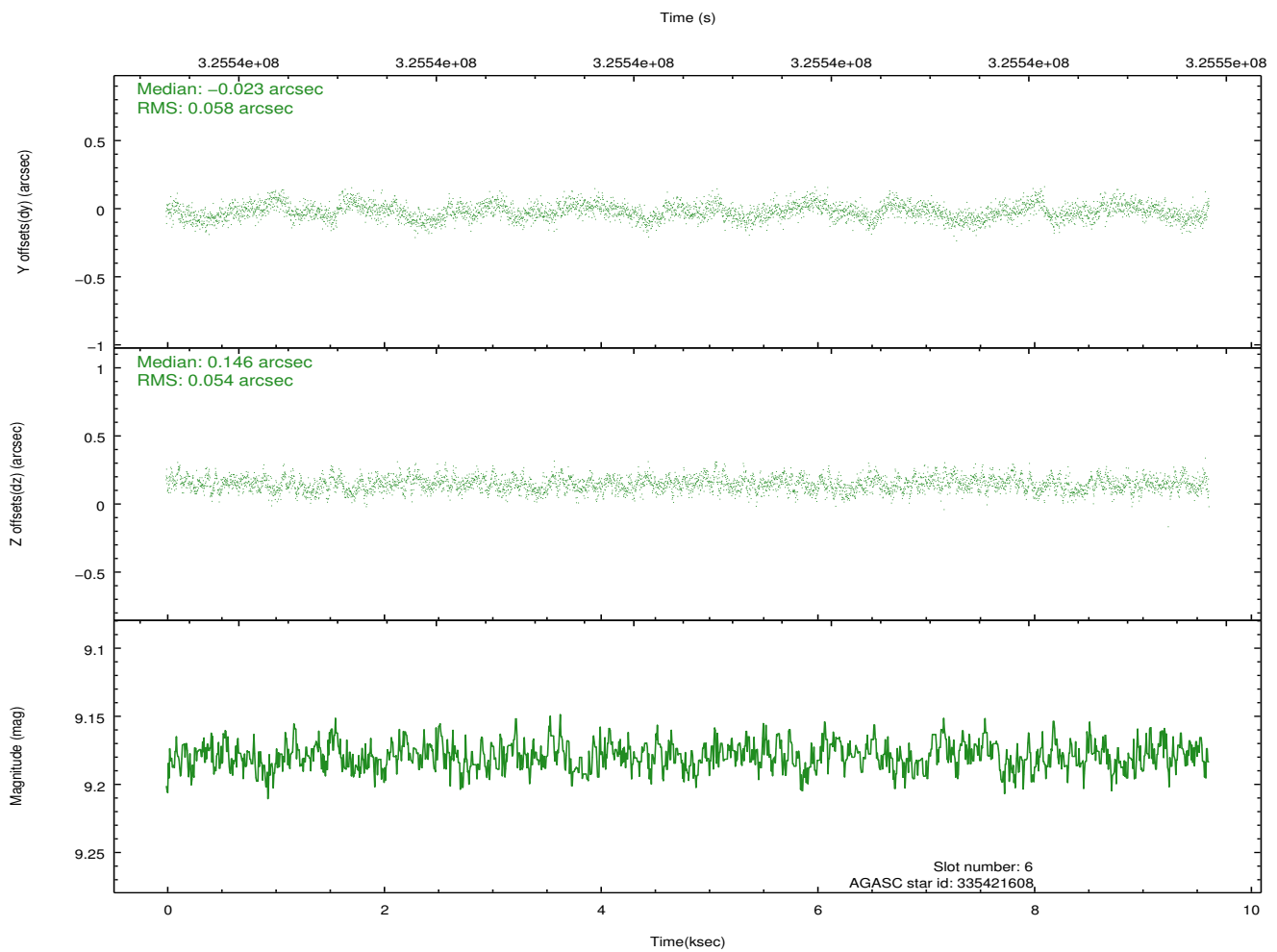
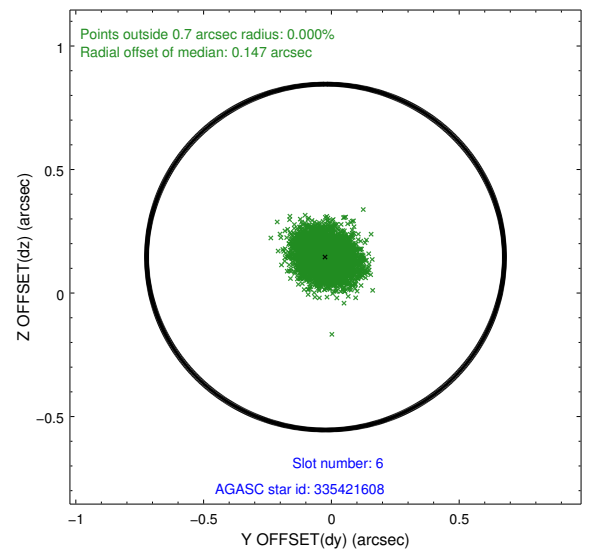
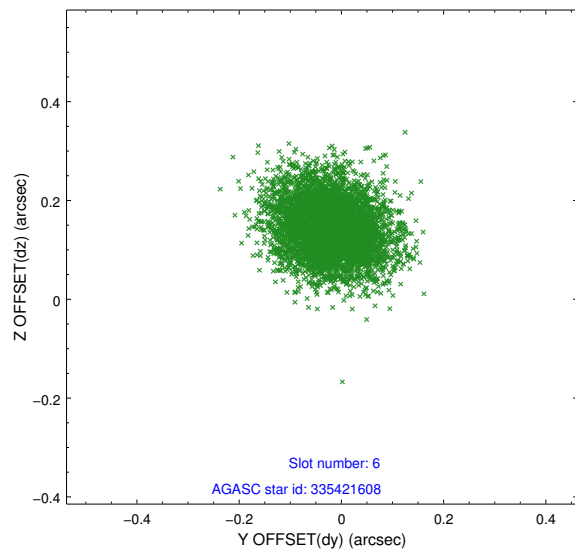
## 2.4.2 Slot 4



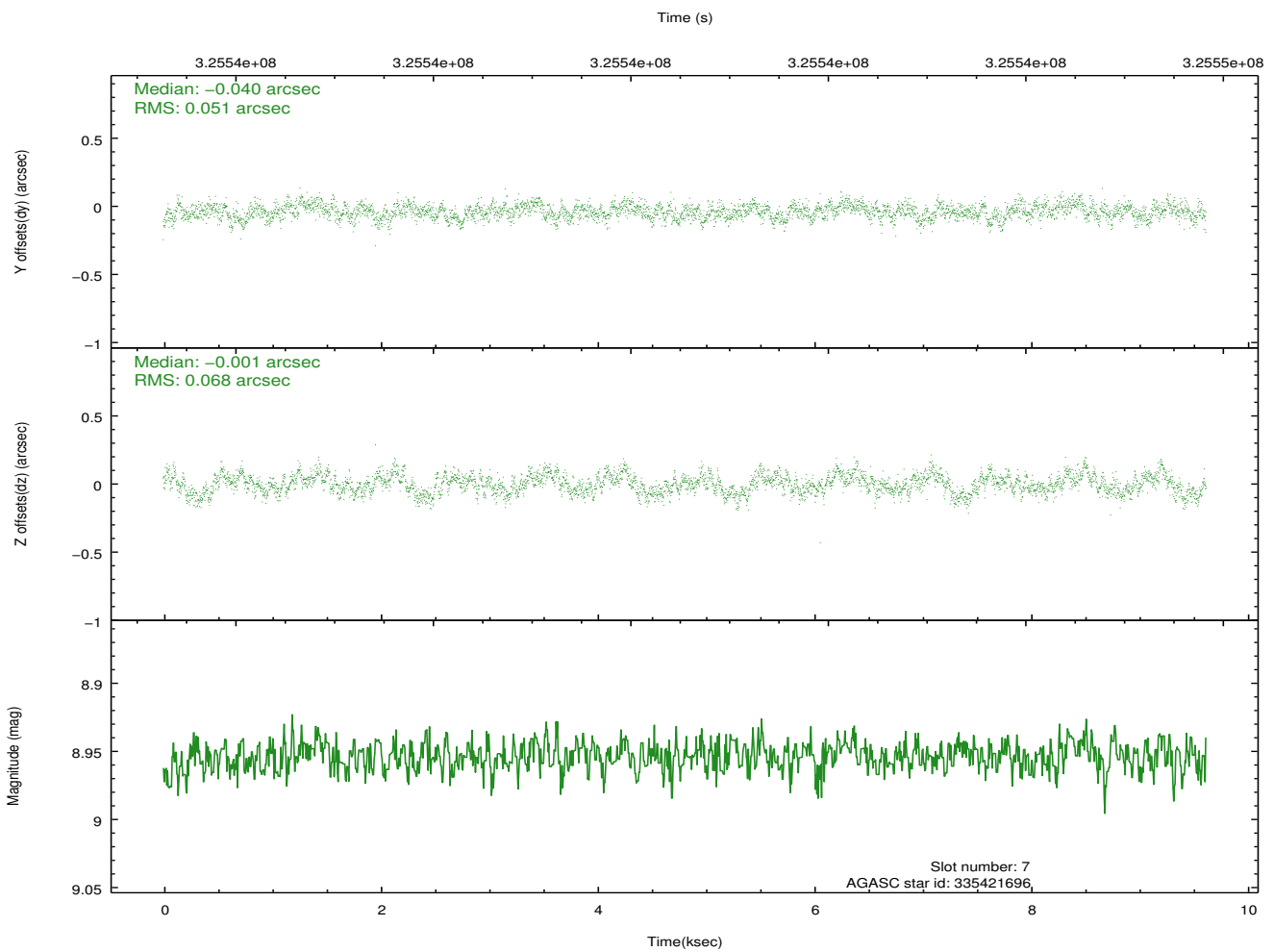
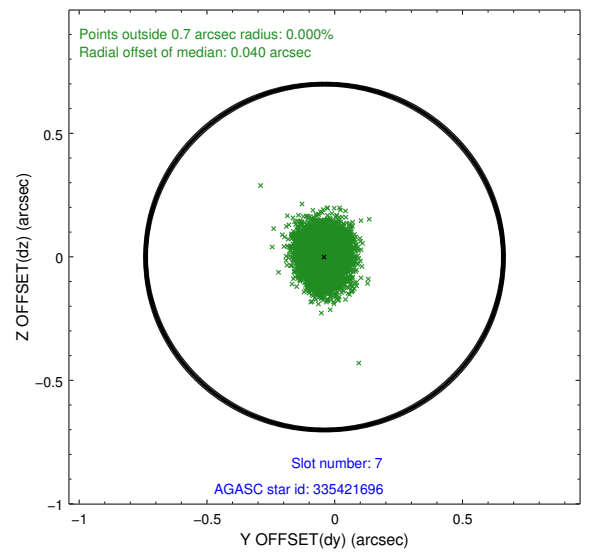
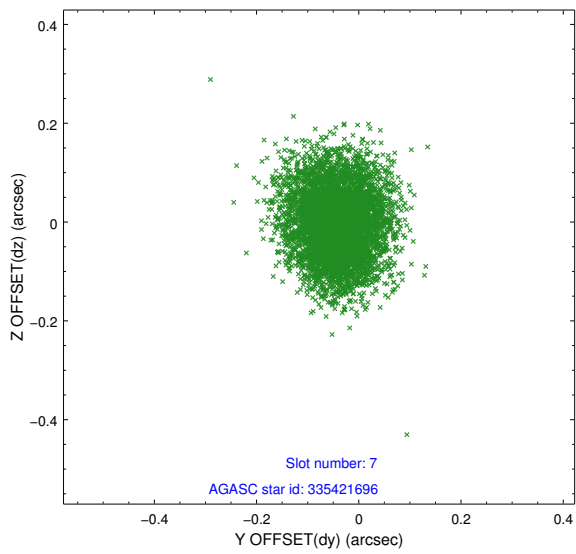
### 2.4.3 Slot 5



## 2.4.4 Slot 6

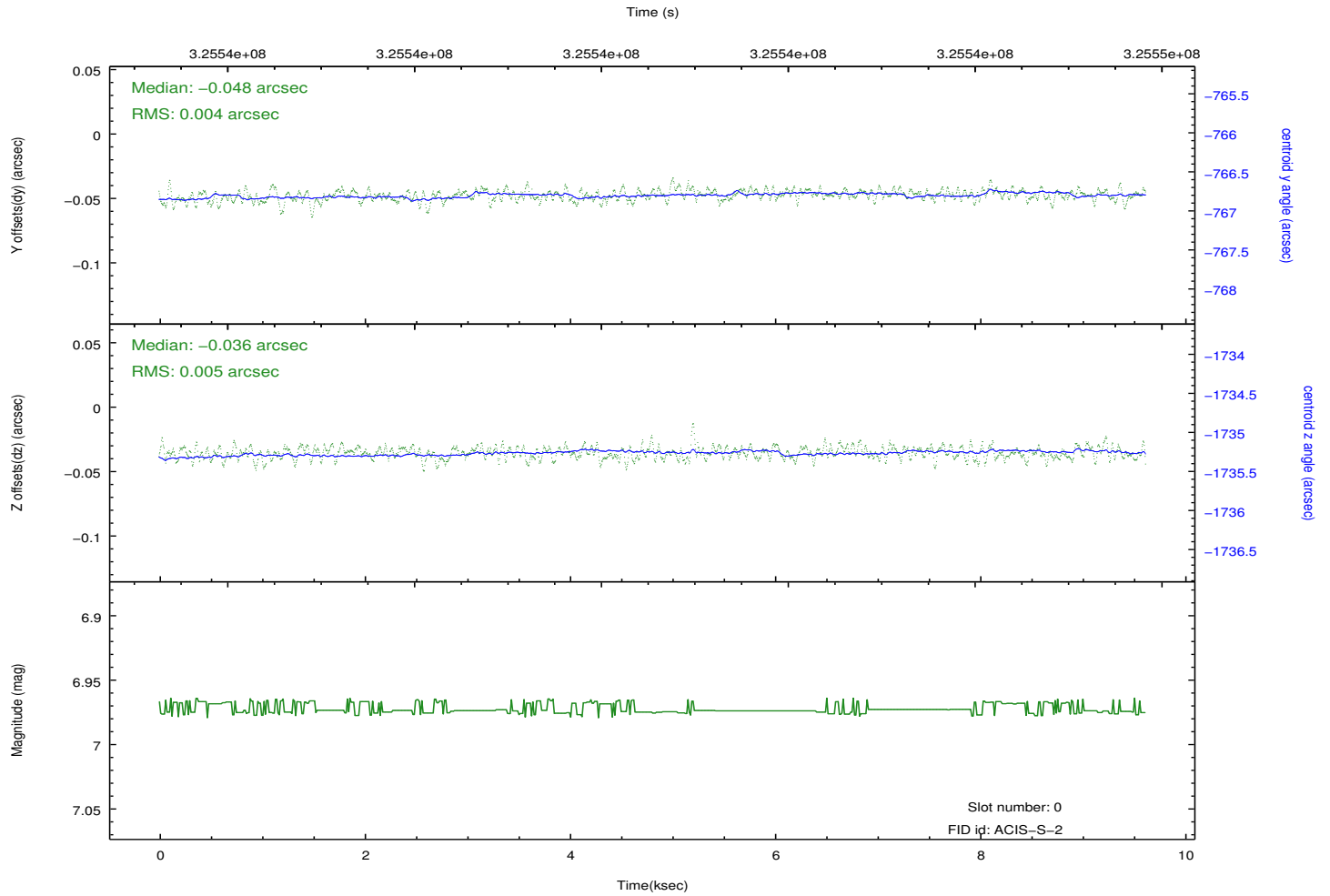
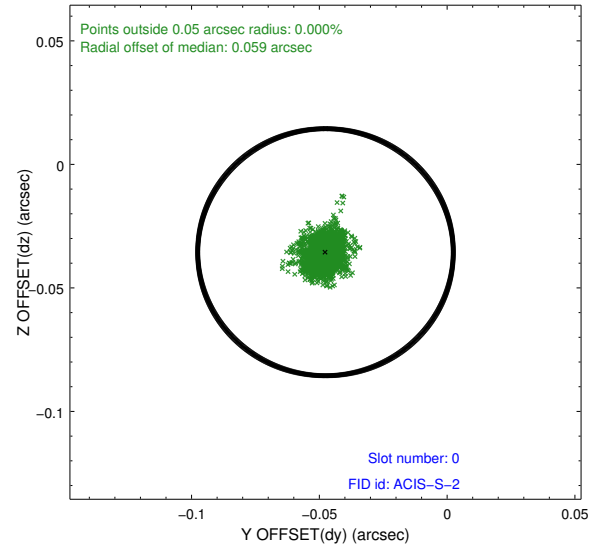
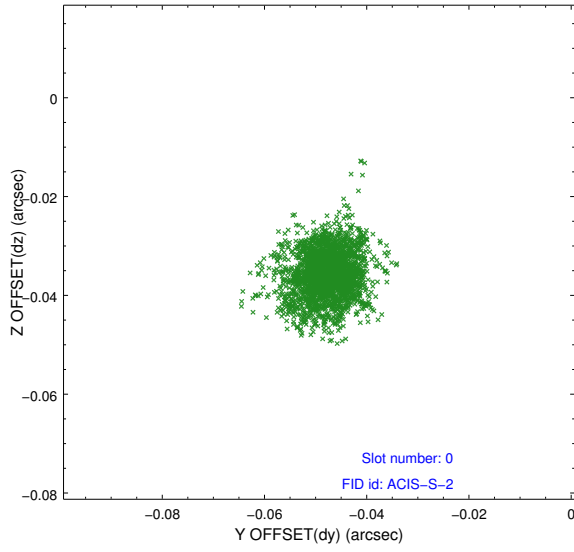


## 2.4.5 Slot 7

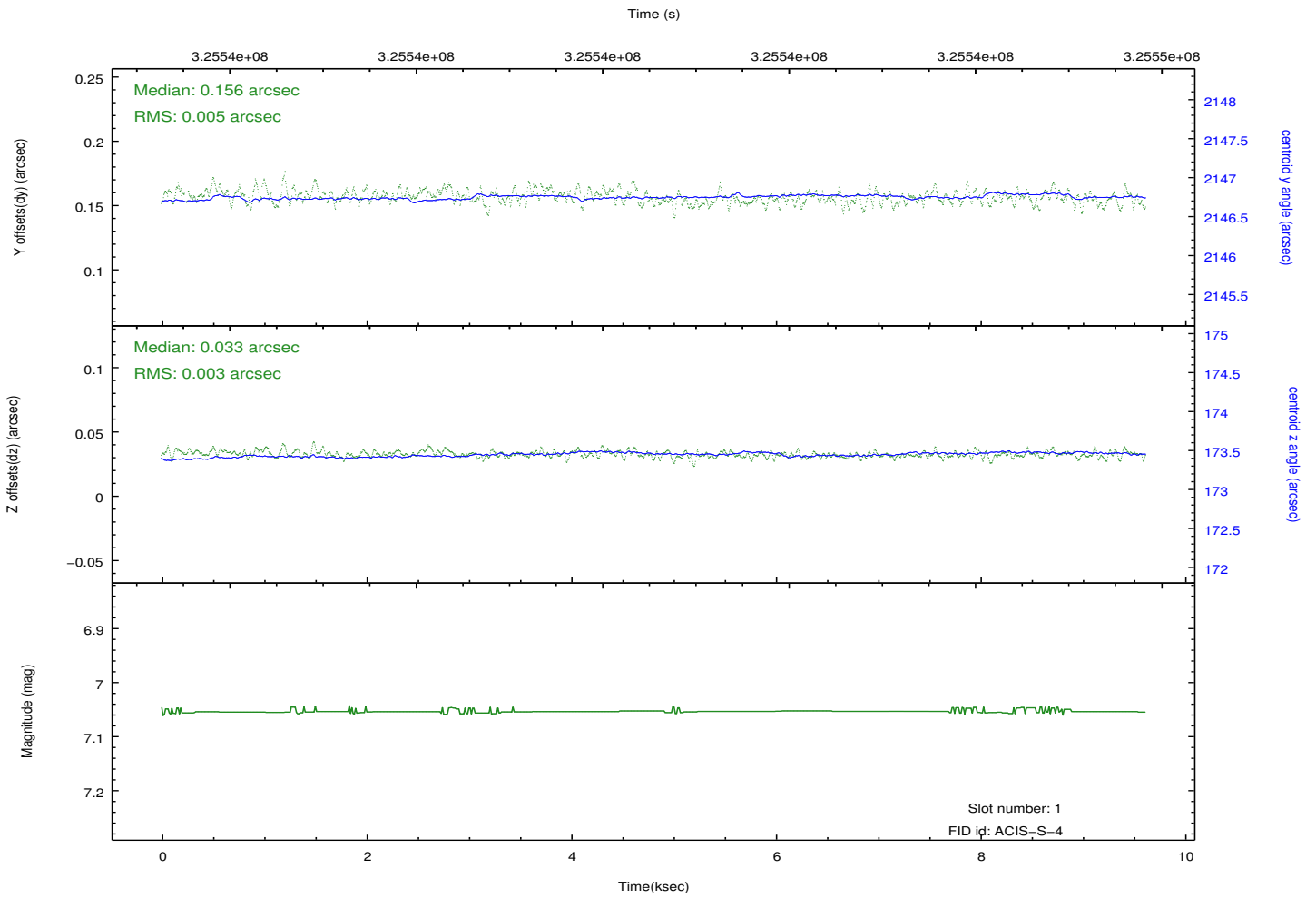
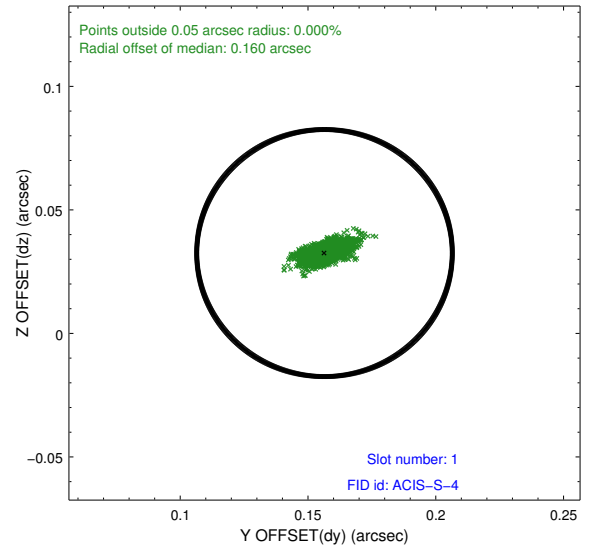
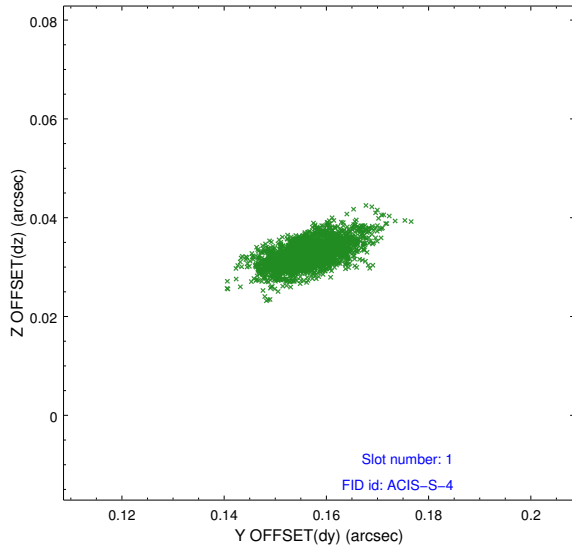


## 2.5 FID Slots

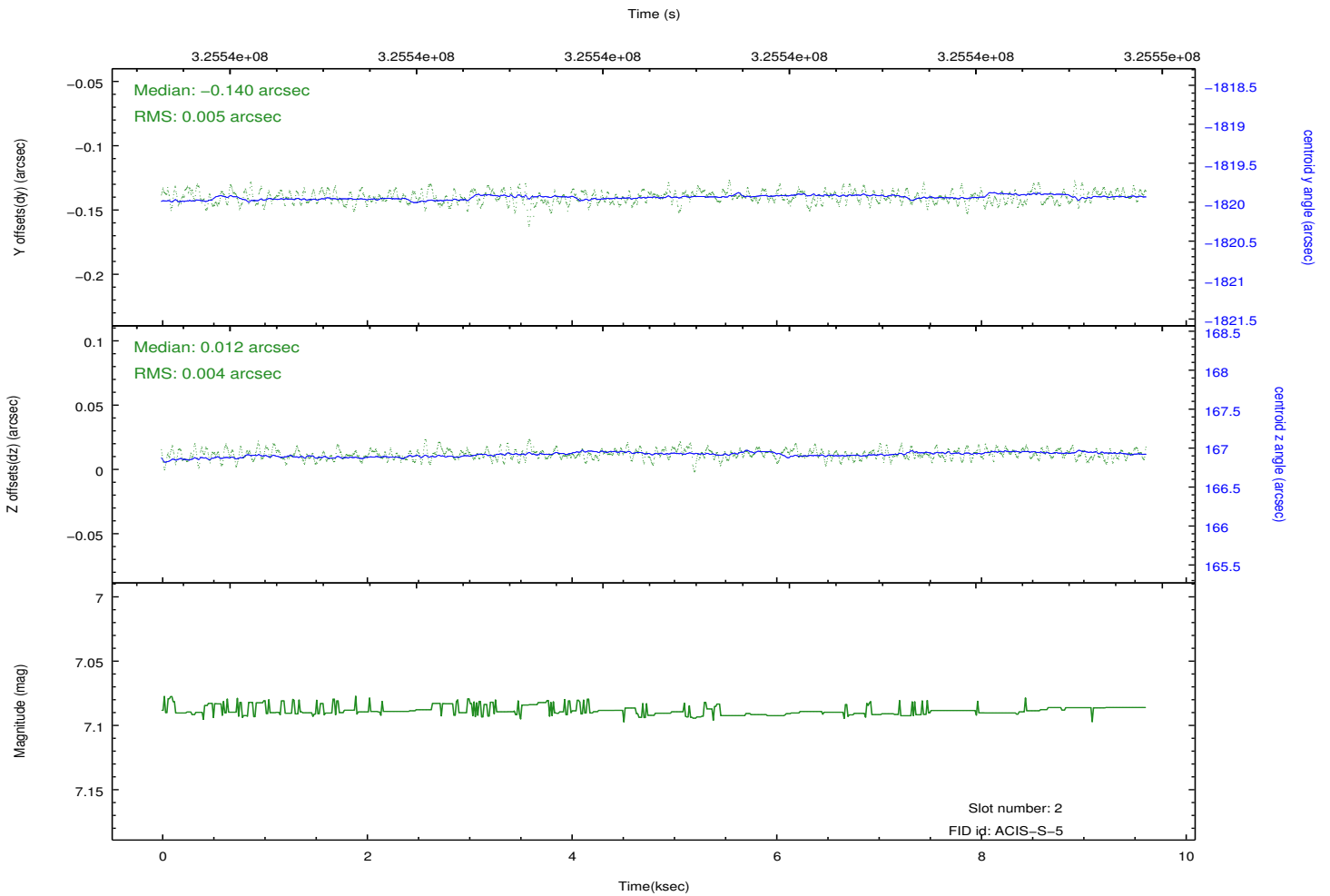
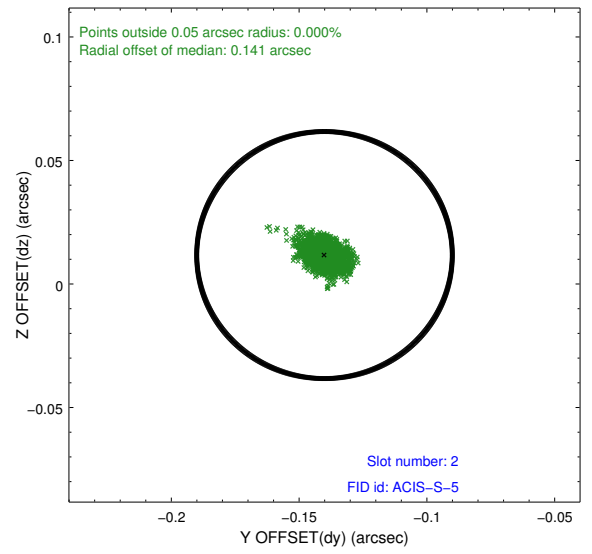
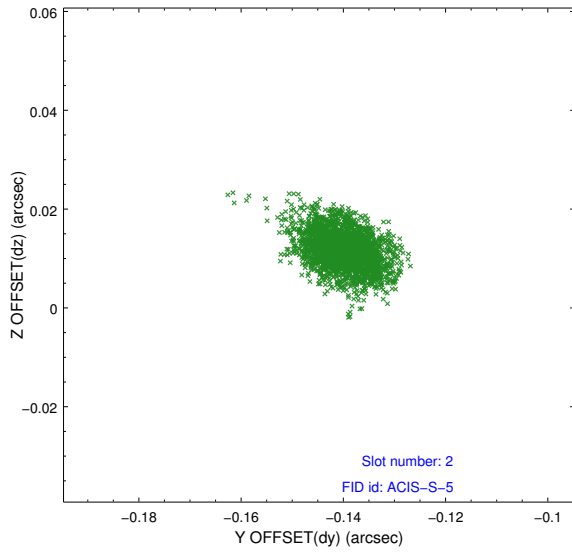
### 2.5.1 Slot 0



## 2.5.2 Slot 1



### 2.5.3 Slot 2



# A Summary

## A.1 Status

V&V Scientist	Beth Sundheim
V&V Date (YYYY-MM-DD)	2012.05.15
V&V Edition	1
V&V Disposition and Status	OK
V&V Charge Time	9.04639996

## A.2 Comments