

# V&V Reference Report

## L2 ASCDS Version : 8.4.4

Observation 9174 - L2 Version 2  
Chandra X-Ray Center

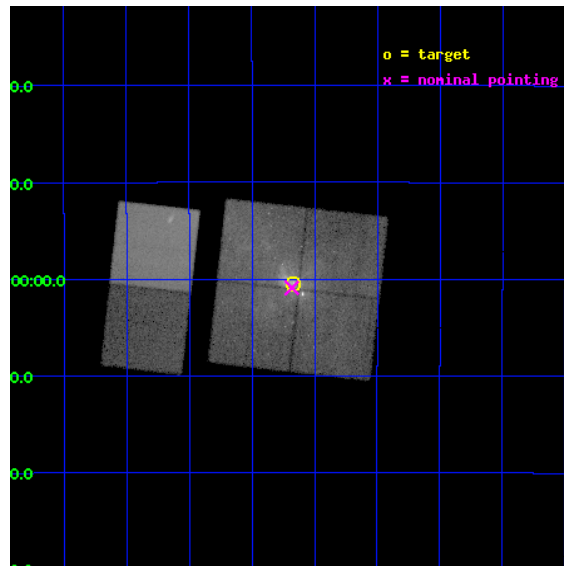
L2 Processing Date : May 18 2012

## Contents

<b>1</b>	<b>Front</b>	<b>2</b>
<b>2</b>	<b>OBI</b>	<b>3</b>
2.1	OBI . . . . .	3
2.1.1	Images . . . . .	3
2.1.2	Bias . . . . .	3
2.1.3	Parameters . . . . .	4
2.1.4	Events . . . . .	4
2.2	Compared Parameters . . . . .	5
2.3	Aspect . . . . .	6
2.4	Star Slots . . . . .	9
2.4.1	Slot 3 . . . . .	9
2.4.2	Slot 4 . . . . .	10
2.4.3	Slot 5 . . . . .	11
2.4.4	Slot 6 . . . . .	12
2.4.5	Slot 7 . . . . .	13
2.5	FID Slots . . . . .	14
2.5.1	Slot 0 . . . . .	14
2.5.2	Slot 1 . . . . .	15
2.5.3	Slot 2 . . . . .	16
<b>A</b>	<b>Summary</b>	<b>17</b>
A.1	Status . . . . .	17
A.2	Comments . . . . .	17

# 1 Front

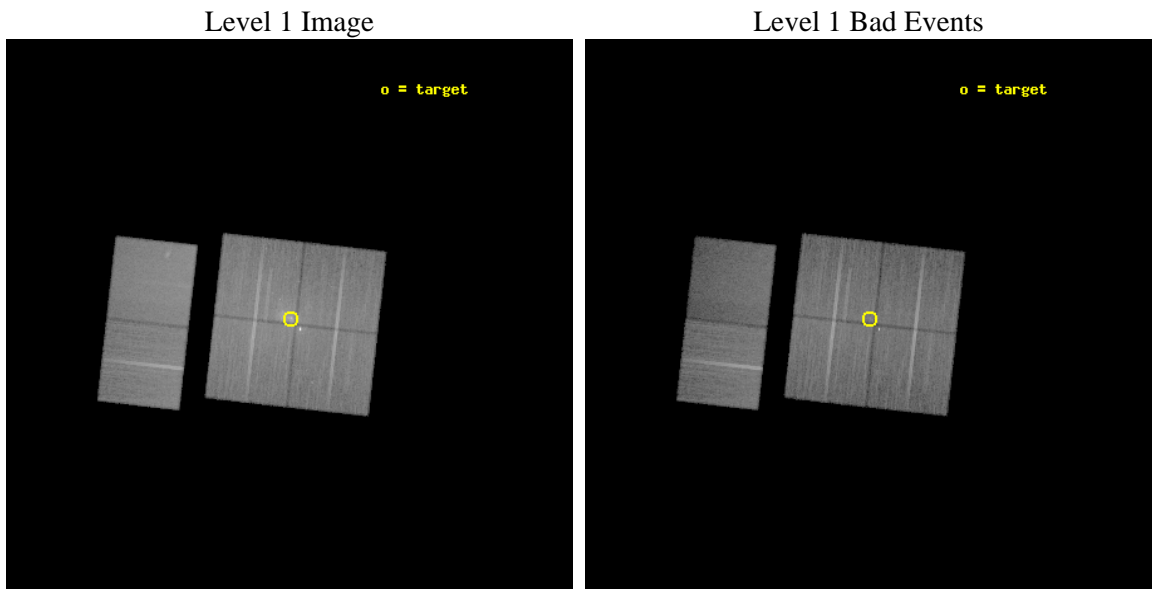
seq_num	701616	Sequence number
obs_id	9174	Observation id
title	Simultaneous Chandra, VLT, and APEX Observations of Sgr A*	Proposa
observer	Prof Farhad Yusef-Zadeh	Principal investigator
object	Sgr A*	Source name
dtcycle	0	&#160
cycle	P	events from which exps? Prim/Second/Both
ra_targ	266.416667	Observer's specified target RA [deg]
dec_targ	-29.007806	Observer's specified target Dec [deg]
ra_nom	266.4203882818	Nominal RA [deg]
dec_nom	-29.01521210025	Nominal Dec [deg]
roll_nom	276.3725883765	Nominal Roll [deg]
revision	2	Processing version of data
ontime	29177.599891365	Sum of GTIs [s]
livetime	28808.135552899	Livetime [s]
ontime0	29177.599891365	Sum of GTIs [s]
ontime1	29174.358881056	Sum of GTIs [s]
ontime2	29177.599891365	Sum of GTIs [s]
ontime3	29177.599891365	Sum of GTIs [s]
ontime6	29174.35889107	Sum of GTIs [s]
ontime7	29177.599891365	Sum of GTIs [s]
l2events	356496	Number of level 2 events



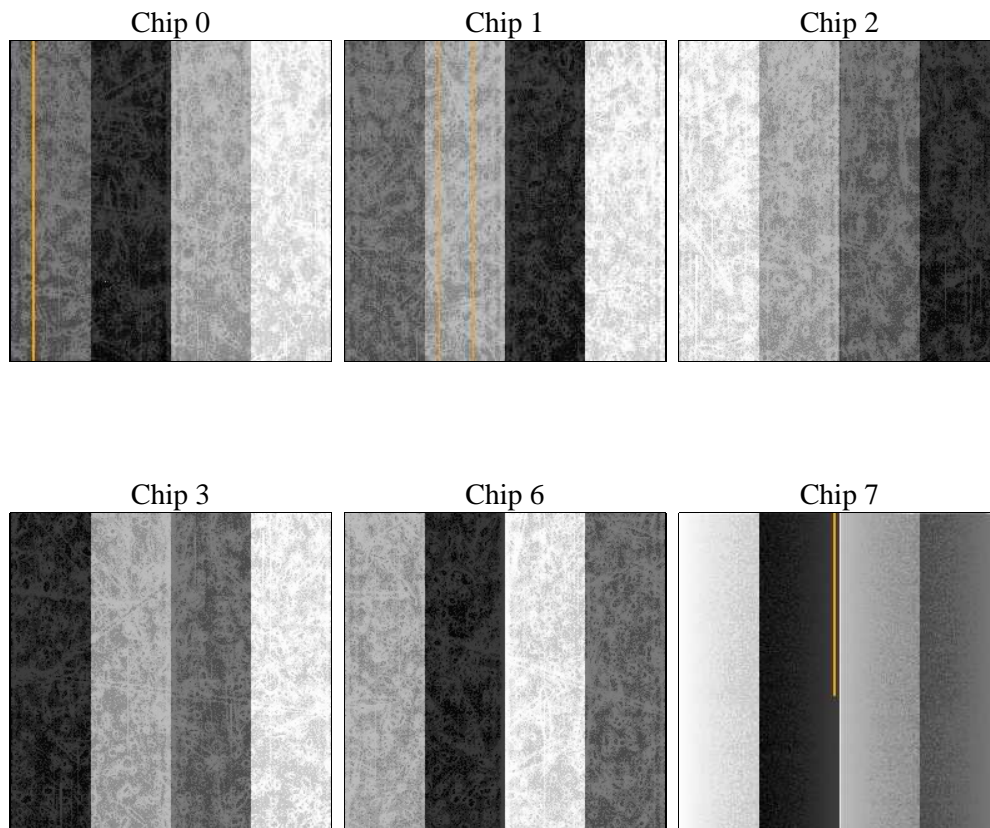
## 2 OBI

### 2.1 OBI

#### 2.1.1 Images



#### 2.1.2 Bias



### 2.1.3 Parameters

obi_num	0	Obi number	sched_exp_time	29000.000000	[s] Scheduled observation exposure time
ascdsver	8.4.4	Processing system revision	ontime	29177.599891365	Sum of GTIs [s]
caldbver	4.4.9	&#160	ontime0	29177.599891365	Sum of GTIs [s]
date	2012-05-18T14:57:11	Date and time of file creation	ontime1	29174.358881056	Sum of GTIs [s]
revision	2	Processing version of data	ontime2	29177.599891365	Sum of GTIs [s]
			ontime3	29177.599891365	Sum of GTIs [s]
			ontime6	29174.35889107	Sum of GTIs [s]
			ontime7	29177.599891365	Sum of GTIs [s]
			l1events	1564247	Number of level 1 events

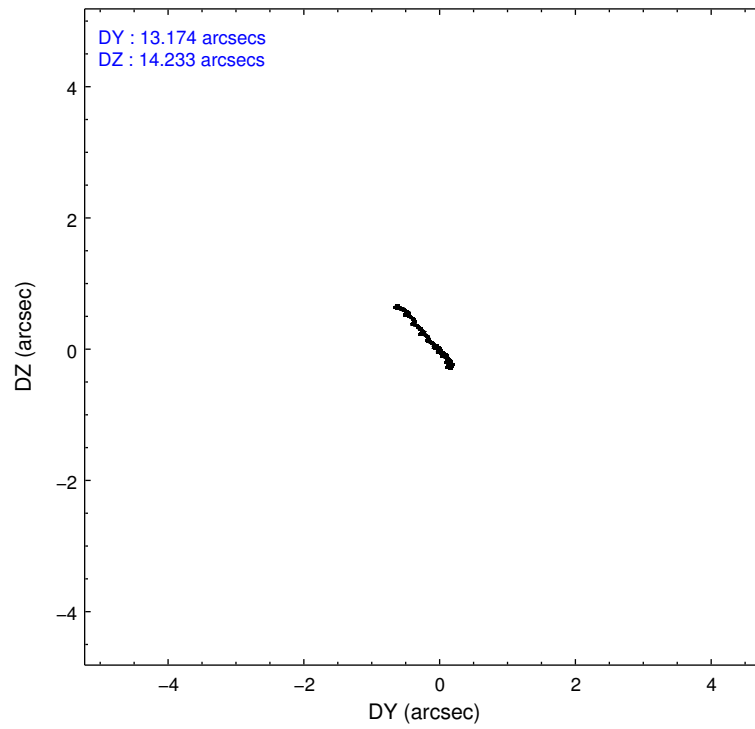
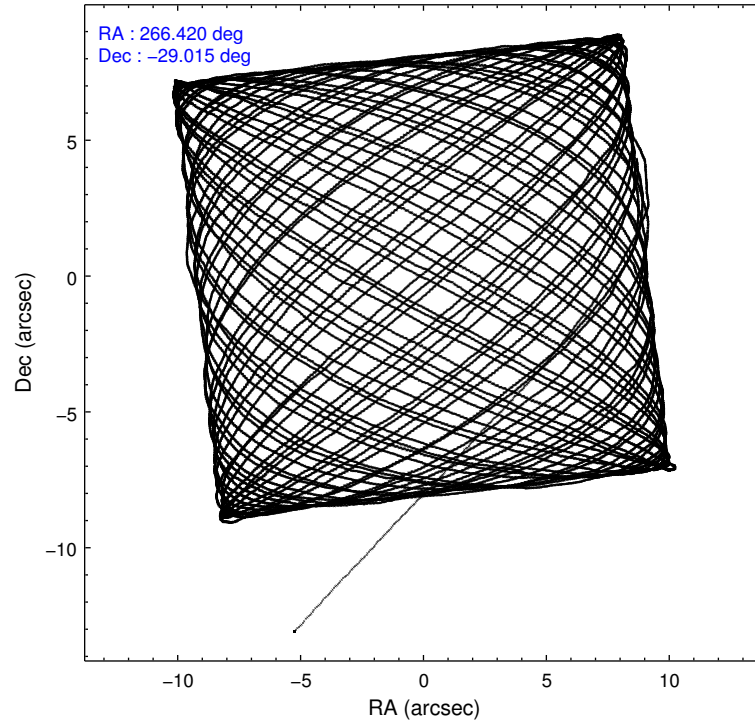
### 2.1.4 Events

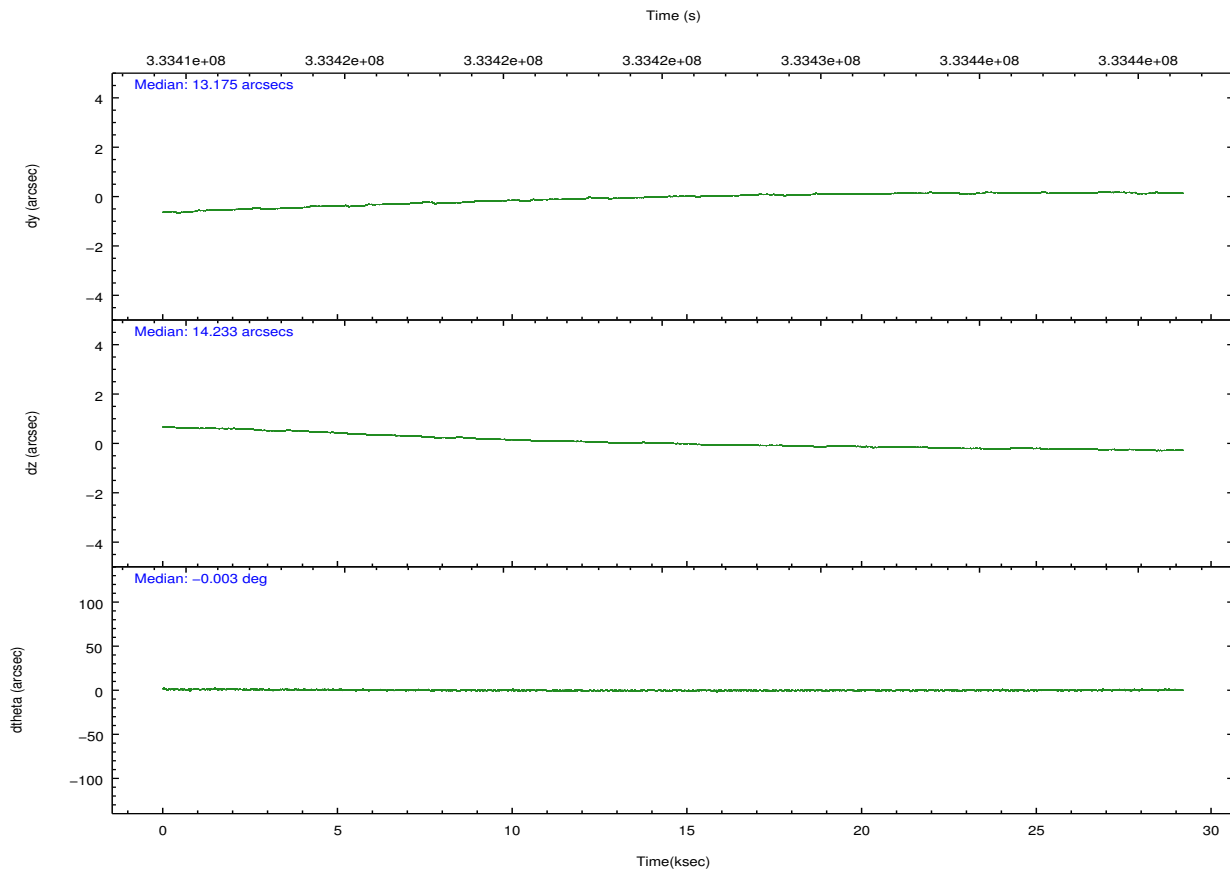
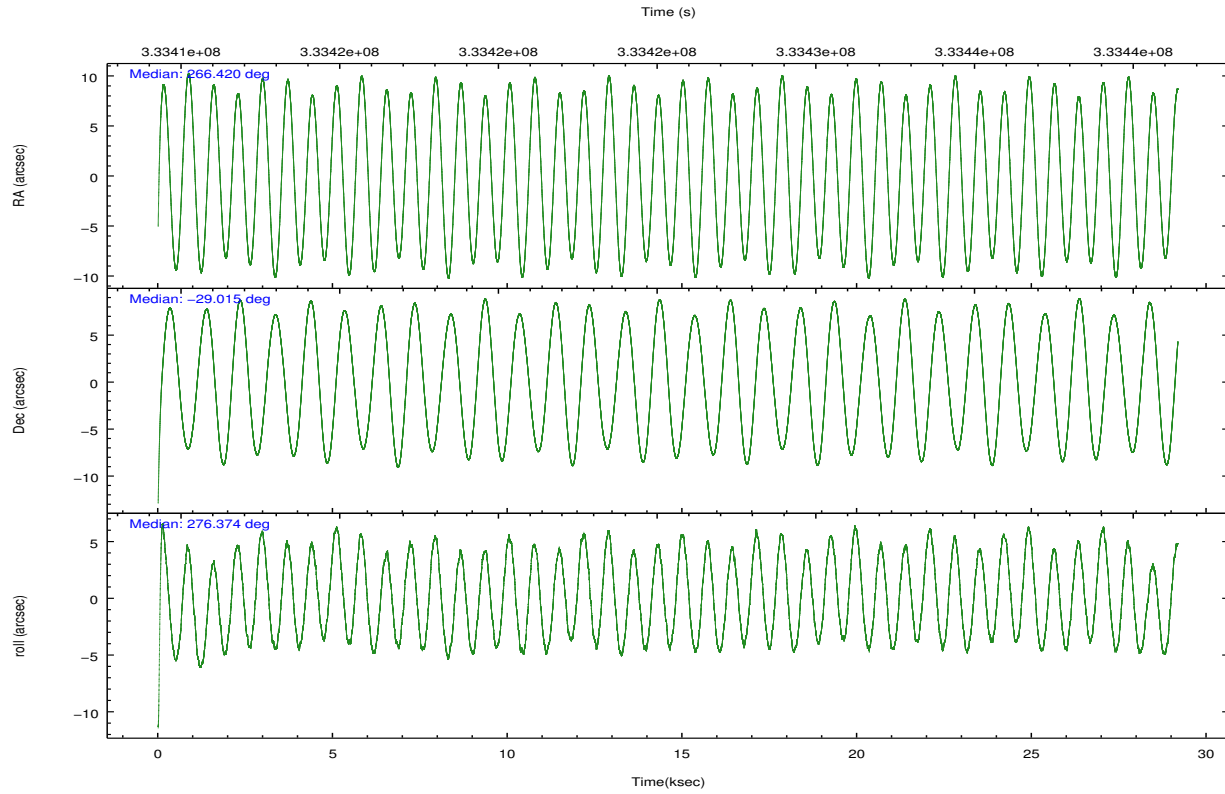
	ccd 0	ccd 1	ccd 2	ccd 3	ccd 6	ccd 7		ccd 0	ccd 1	ccd 2	ccd 3	ccd 6	ccd 7
level 1 events	246344	236569	269584	285330	246550	279870	grade 0 events	25532	23936	25966	45676	12093	13897
rejected events	195217	189141	221630	209303	217292	144997		10%	10%	9%	16%	4%	4%
rejected %	79%	79%	82%	73%	88%	51%	grade 1 events	768	218	296	421	167	372
								0%	0%	0%	0%	0%	0%
							grade 2 events	9865	8975	8858	12084	6049	28263
								4%	3%	3%	4%	2%	10%
							grade 3 events	4209	3855	3624	5037	2805	12654
								1%	1%	1%	1%	1%	4%
							grade 4 events	3929	3727	3649	5085	2726	12581
								1%	1%	1%	1%	1%	4%
							grade 5 events	9012	9207	8013	10042	10093	28156
								3%	3%	2%	3%	4%	10%
							grade 6 events	7706	7035	5961	8286	5642	67726
								3%	2%	2%	2%	2%	24%
							grade 7 events	185323	179616	213217	198699	206975	116221
								75%	75%	79%	69%	83%	41%

## 2.2 Compared Parameters

Parameter	Planned	Actual	Parameter	Planned	Actual
Instrument	ACIS	ACIS	Obspar format version number	7	7
Detector	ACIS-012367	ACIS-012367	Obspar file type	PREDICTED	ACTUAL
Grating	NONE	NONE	Obspar update status	NONE	UPDATED
Data mode	FAINT	FAINT	CCD I0 on	Y	Y
Observation mode	POINTING	POINTING	CCD I1 on	Y	Y
[deg] Pointing RA	266.401630	266.4203882818013	CCD I2 on	Y	Y
[deg] Pointing Dec	-28.993138	-29.01521210025028	CCD I3 on	Y	Y
[deg] Pointing Roll	276.154813	276.3725883765007	CCD S0 on	N	N
[s] Window start time (MET)	332985665.184000	332985665.184000	CCD S1 on	N	N
[s] Window stop time (MET)	333590465.184000	333590465.184000	CCD S2 on	O2	Y
[mm] SIM focus pos	-0.782348	-0.7809083437167272	CCD S3 on	O1	Y
[mm] SIM defocus	0	0.001439871863259334	CCD S4 on	N	N
[mm] SIM translation stage pos	-233.592463	-233.5874344608287	CCD S5 on	N	N
[mm] SIM translation stage offset	0	-0.005018542100998502	Number of optional ACIS chips dropped	0	0
Phase constraints	Y	Y	On-chip summing requested	N	N
[d] Phase period	0.997270	0.997270	Subarray requested	NONE	NONE
[d] Phase epoch (MJD)	54587.160000	54587.160000	Alternating exposures requested	N	N
Phase start	0.000000	0.000000	[s] Primary exposure time	0.000000	3.2
Phase end	0.334000	0.334000			
Phase start error	0.020000	0.020000			
Phase end error	0.020000	0.020000			
[s] Observation start time (MET)	333410948.184000	333409850.58595			
Observation start date	2008-07-25T22:08:03	2008-07-25T21:50:50			
[s] Observation end					

## 2.3 Aspect



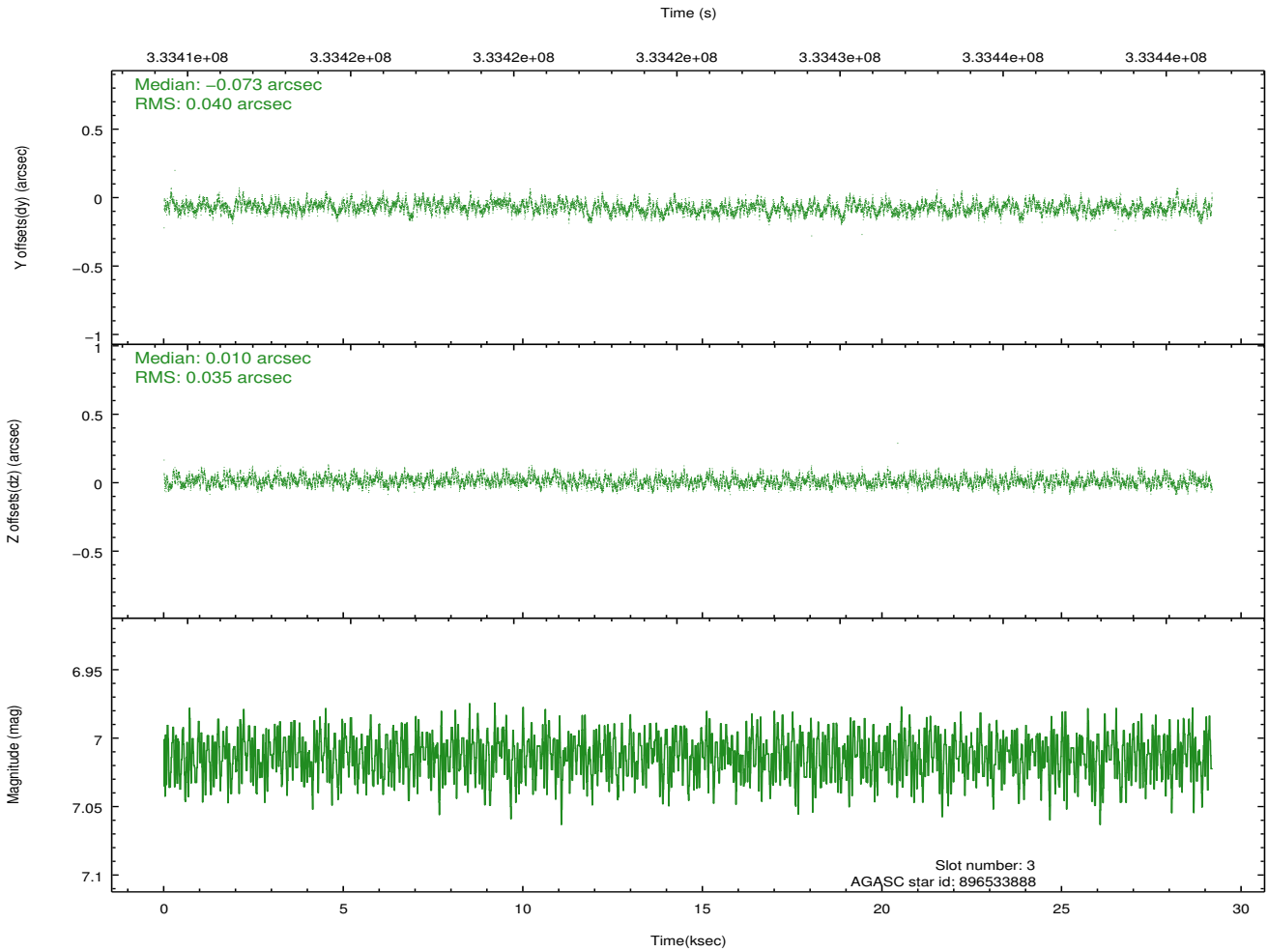
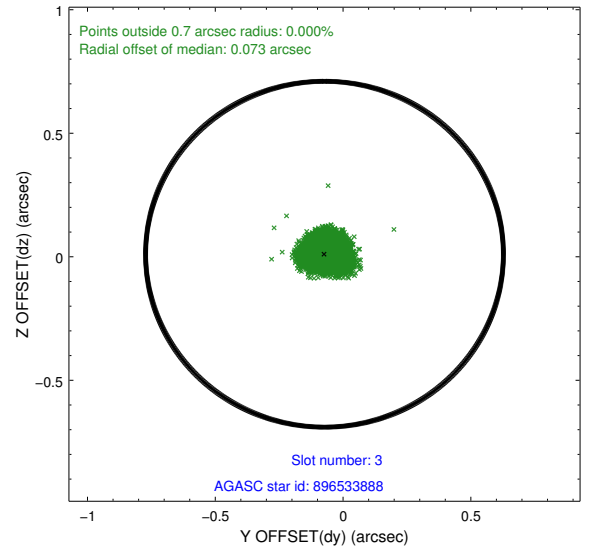
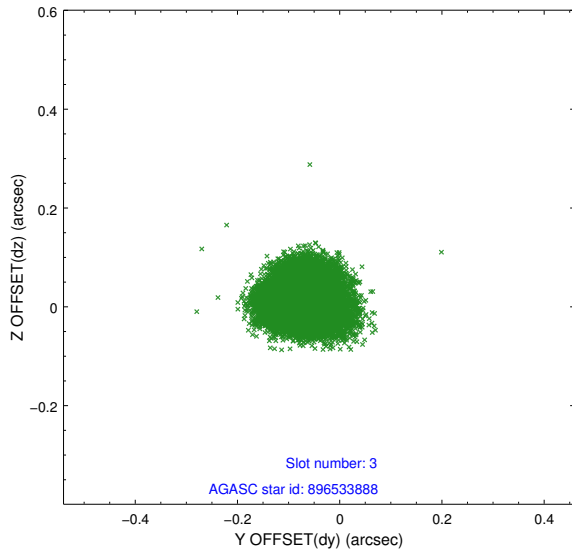


### Slot Statistics

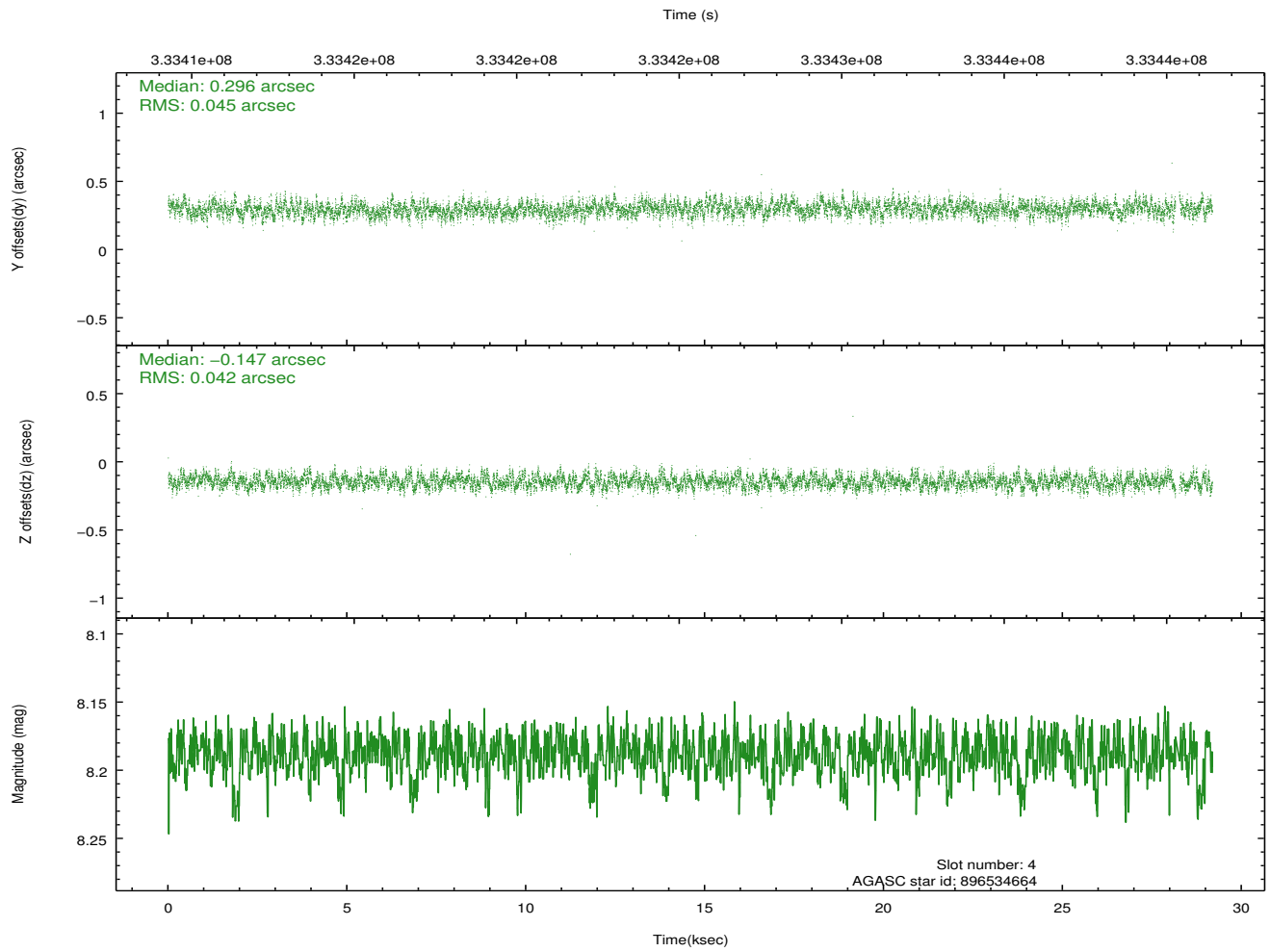
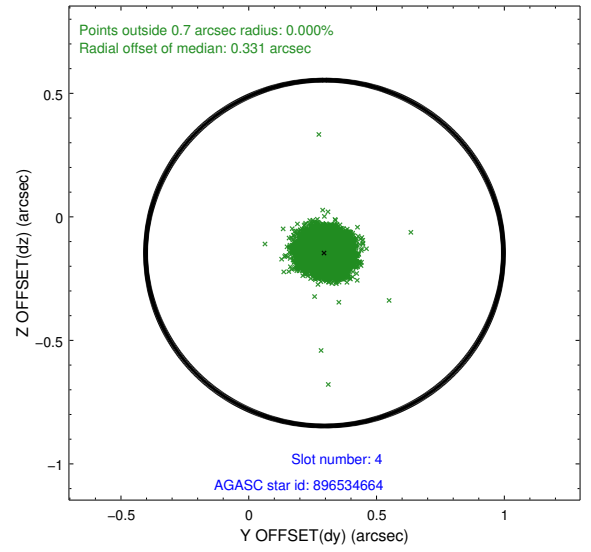
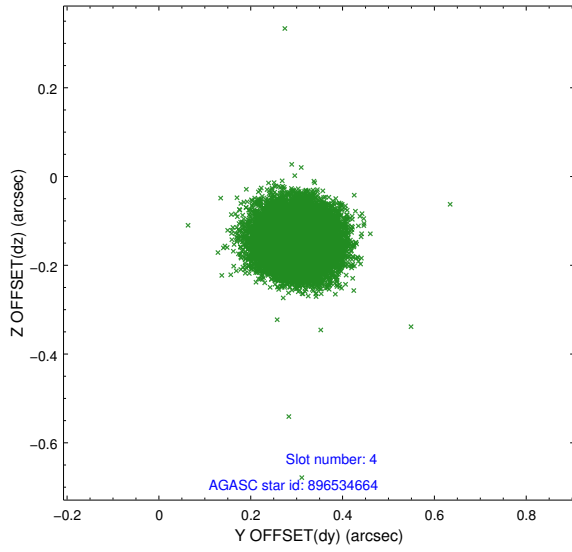
slot	status	id	mag	n_pts	med_dy	med_dz	dr1	dr2	ra	dec	mean_y	mean_z
0	FID	ACIS-I-1	7.03	7118	0.006	0.038	0.016	0.025	0.000000	0.000000	926.44	-837.84
1	FID	ACIS-I-5	7.01	7116	-0.177	0.026	0.009	0.015	0.000000	0.000000	-1821.83	1059.57
2	FID	ACIS-I-6	7.02	7118	0.080	0.007	0.017	0.028	0.000000	0.000000	391.94	1704.17
3	GUIDE	896533888	7.01	14237	-0.073	0.010	0.057	0.089	266.666434	-29.392757	1520.61	671.52
4	GUIDE	896534664	8.19	14181	0.296	-0.147	0.066	0.104	266.405570	-28.407461	-2094.21	238.46
5	GUIDE	896537176	8.01	14231	-0.056	-0.016	0.059	0.093	266.498272	-28.678259	-1094.03	425.09
6	GUIDE	896541360	7.71	14235	-0.035	0.059	0.060	0.095	266.684478	-29.453744	1745.00	703.79
7	GUIDE	896404568	7.85	14231	-0.131	0.093	0.061	0.098	265.687293	-28.431080	-2247.23	-2032.05

## 2.4 Star Slots

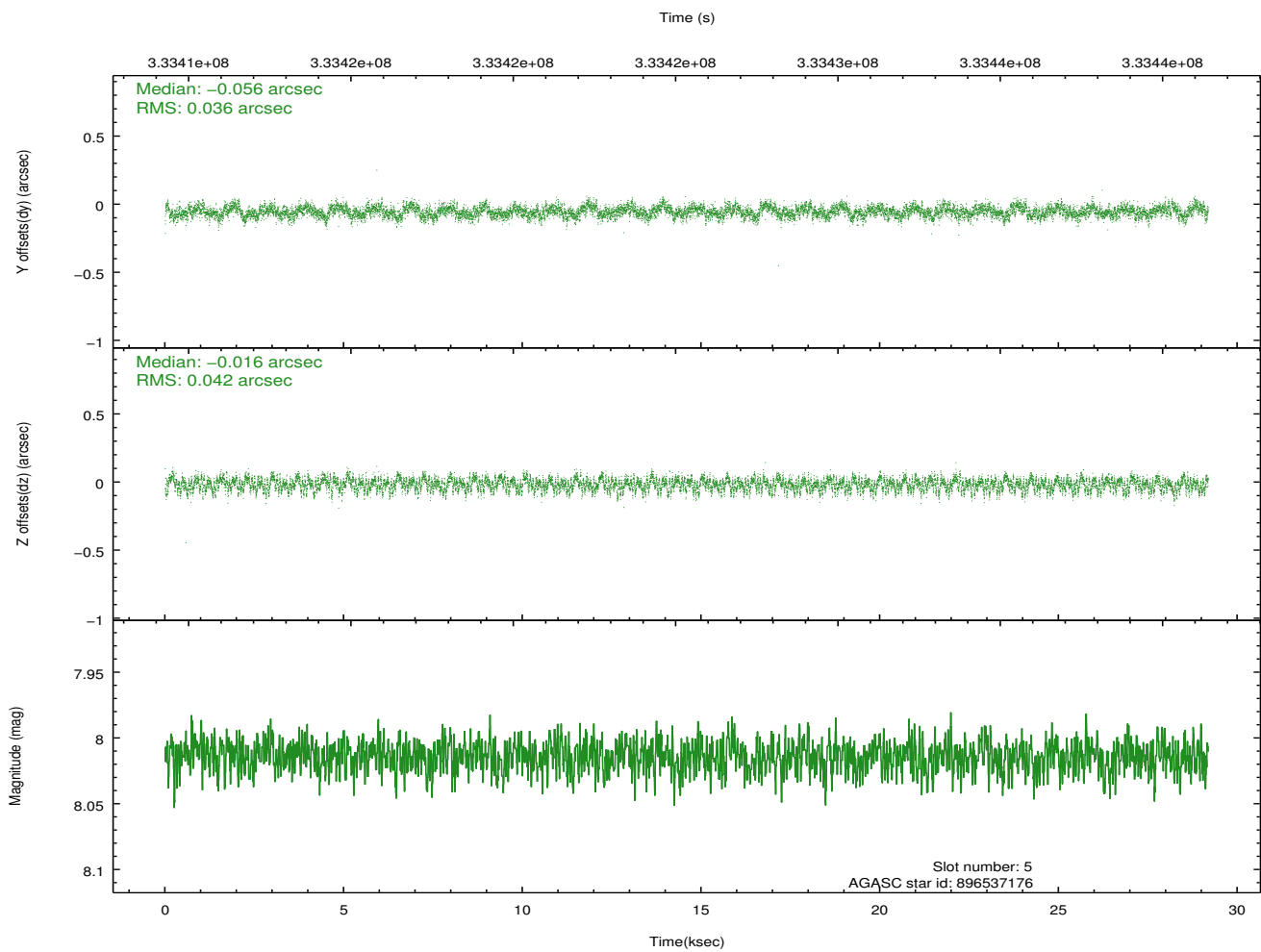
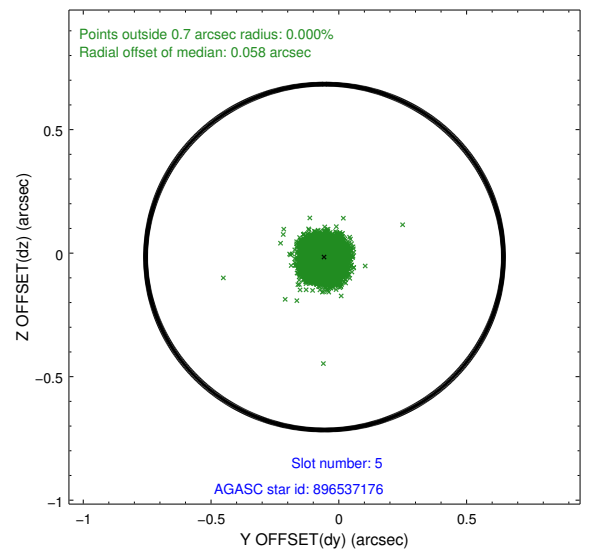
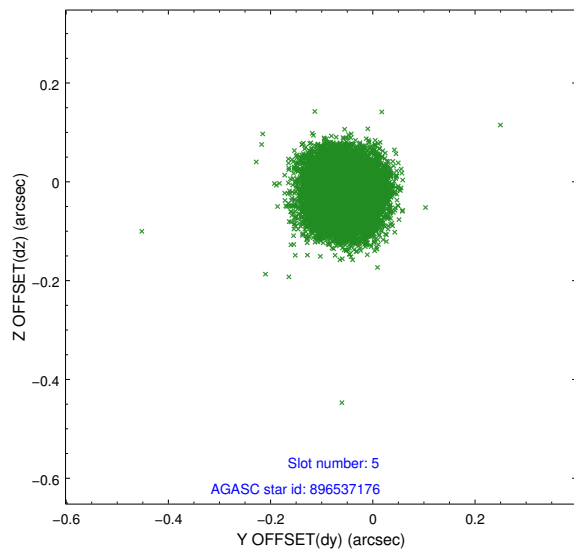
### 2.4.1 Slot 3



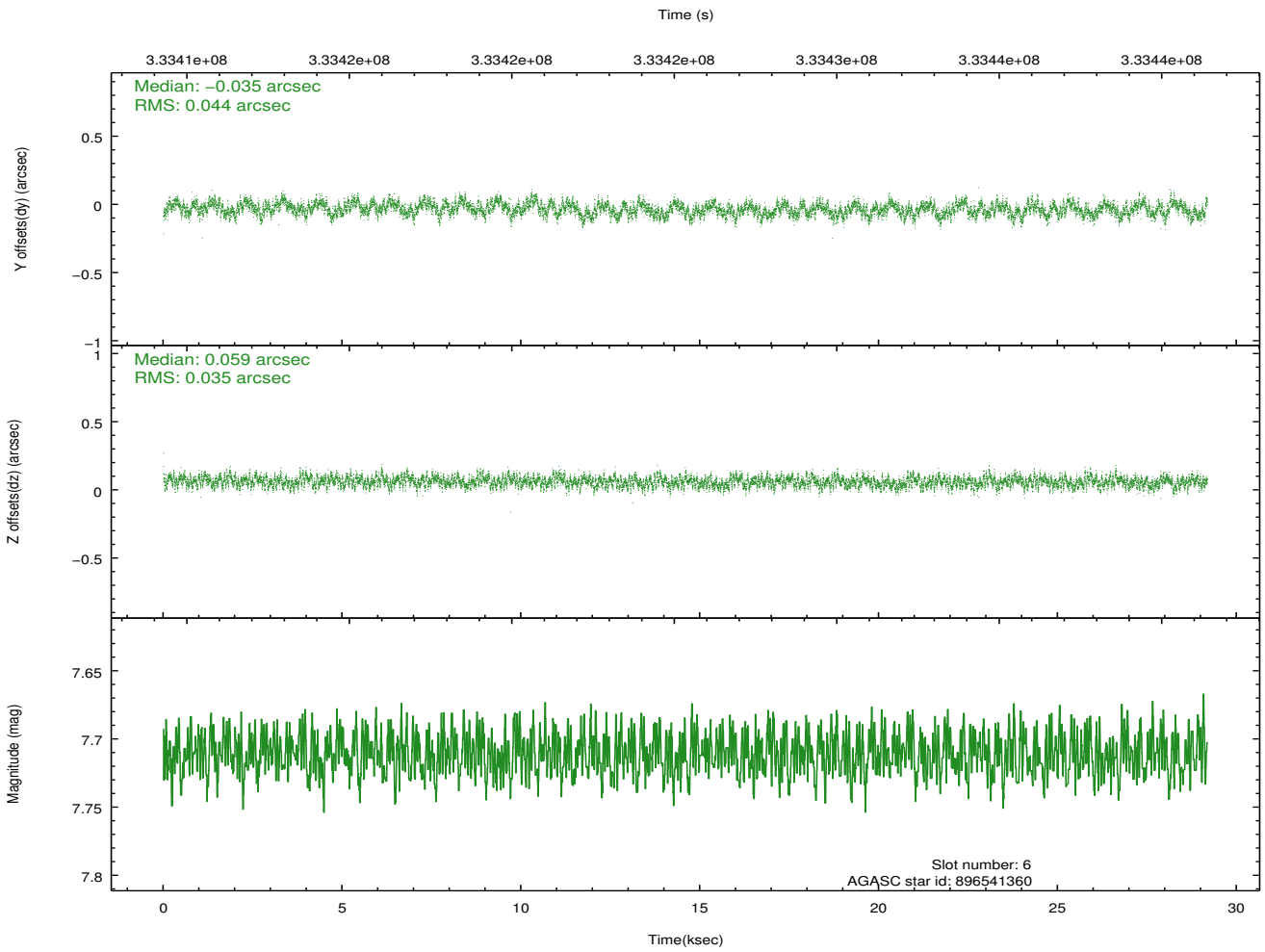
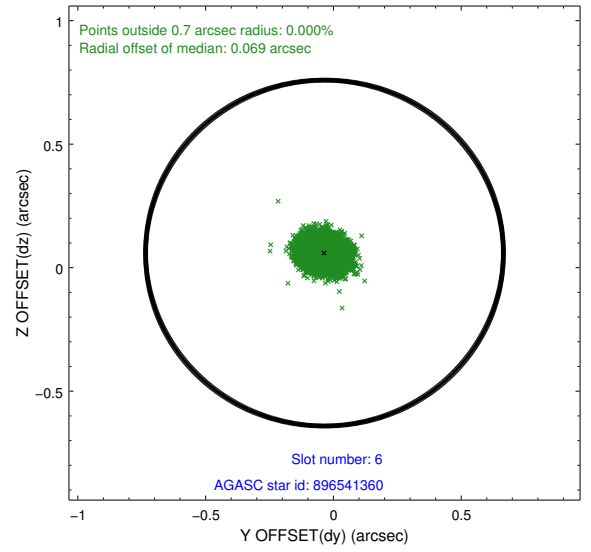
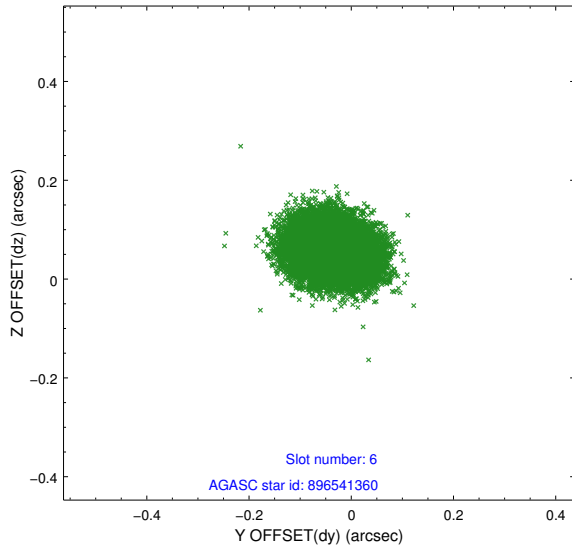
## 2.4.2 Slot 4



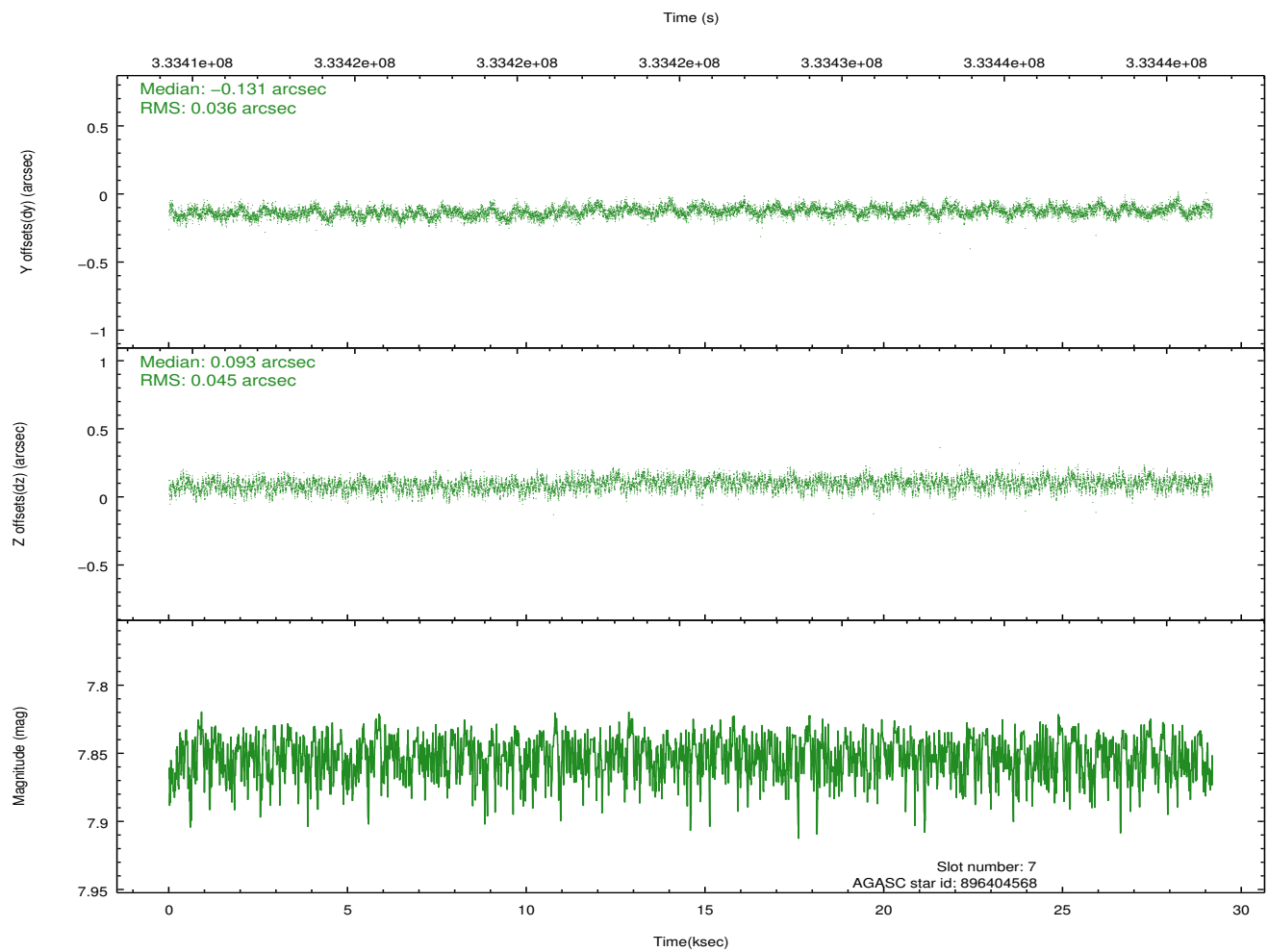
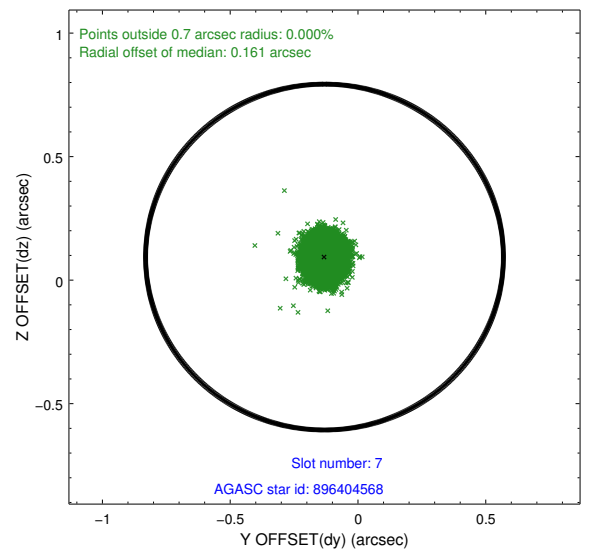
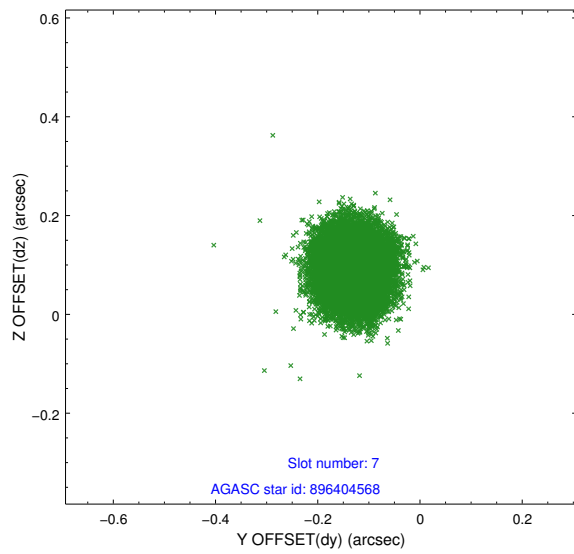
### 2.4.3 Slot 5



### 2.4.4 Slot 6

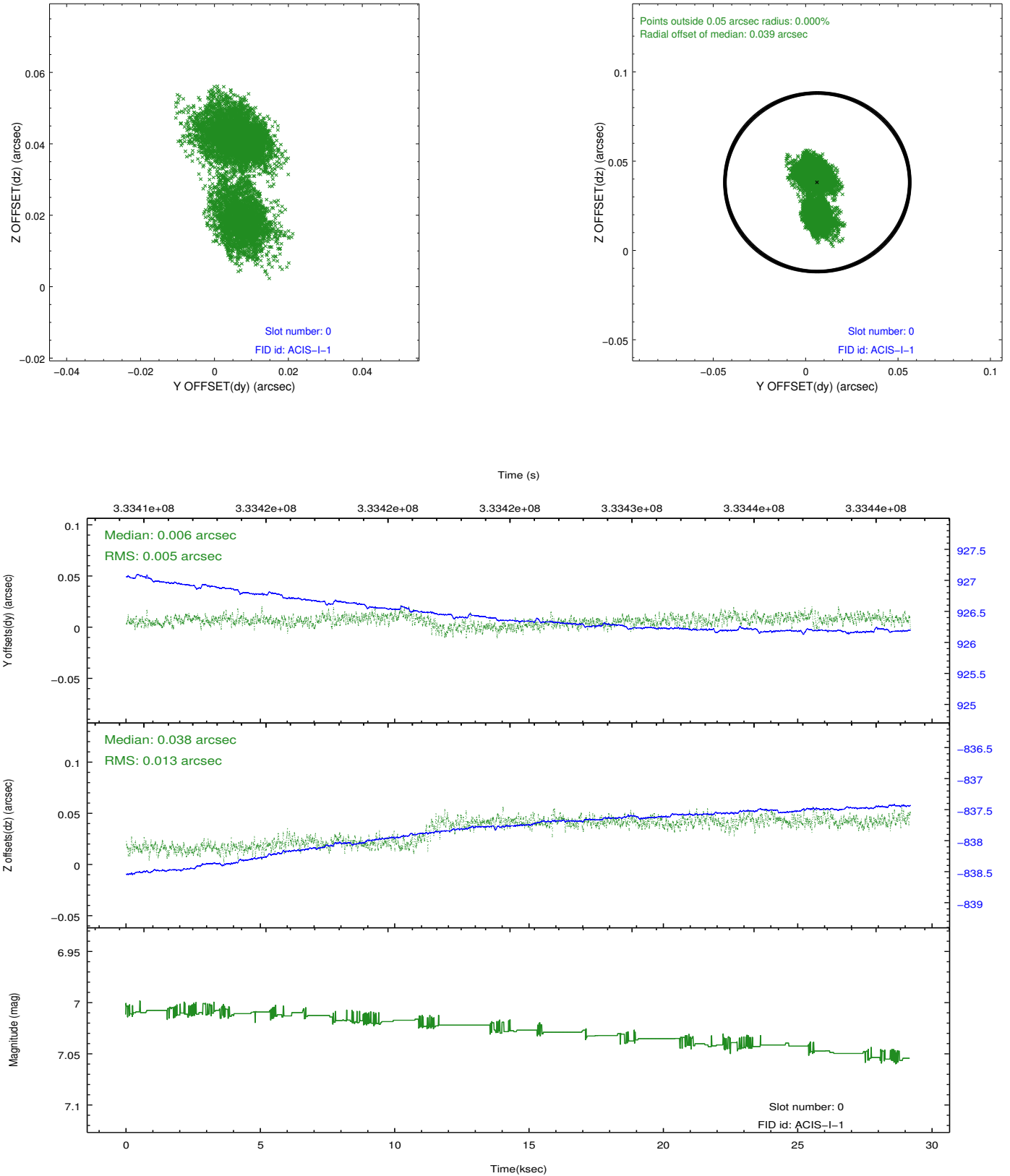


## 2.4.5 Slot 7

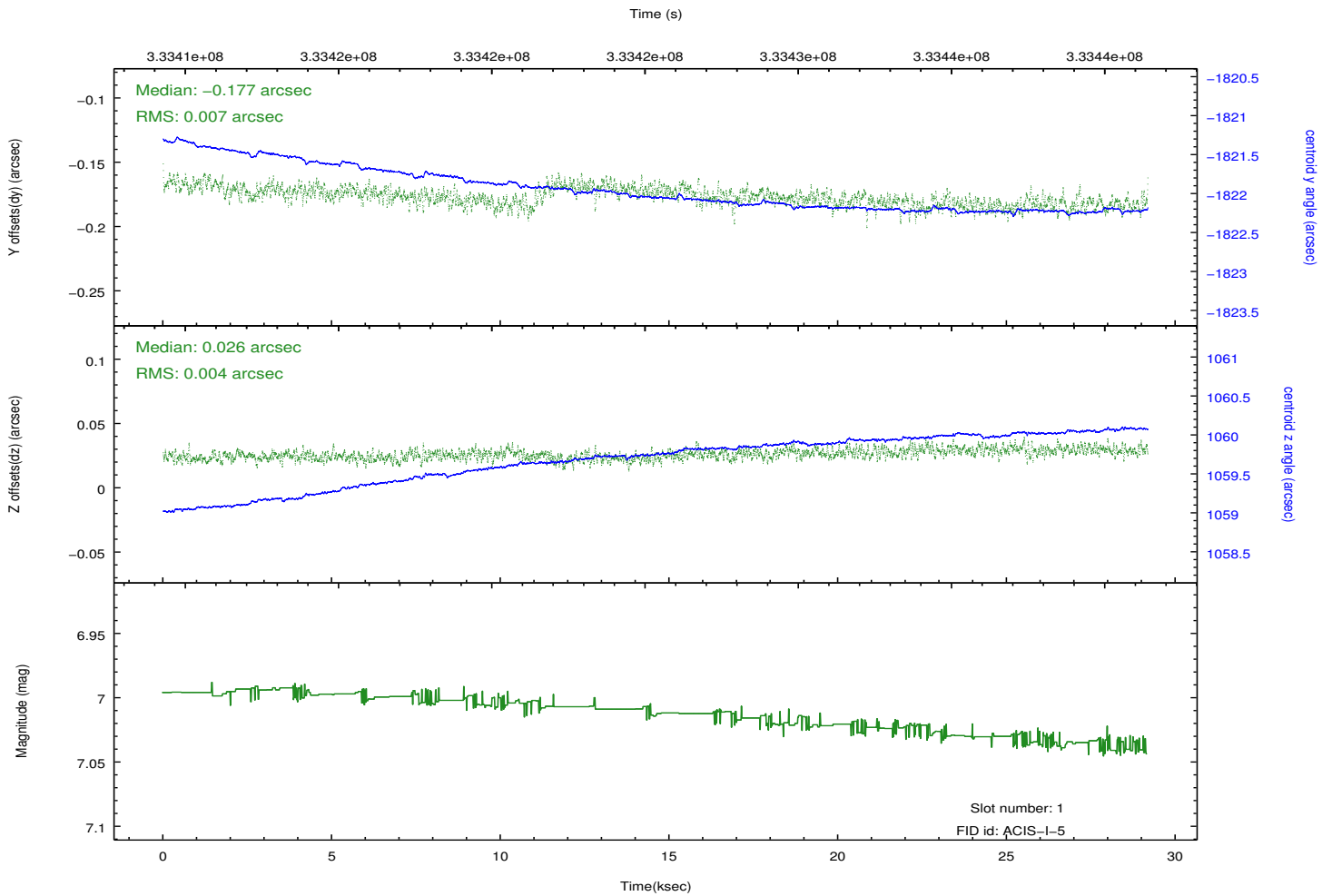
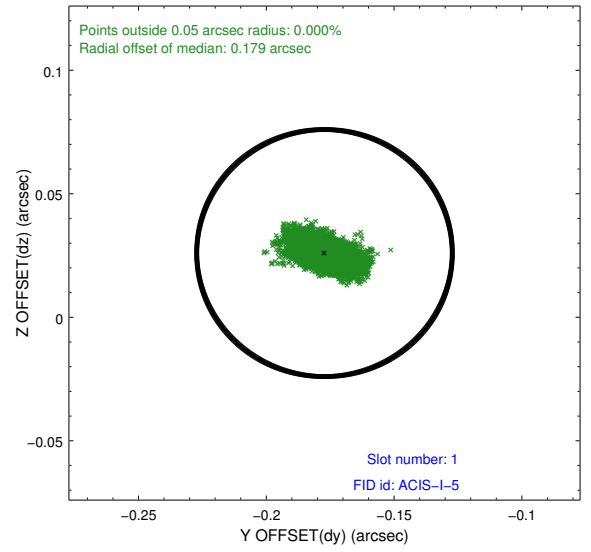
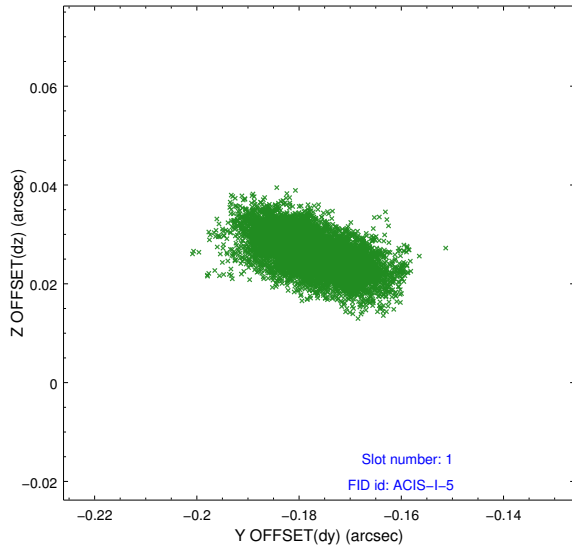


## 2.5 FID Slots

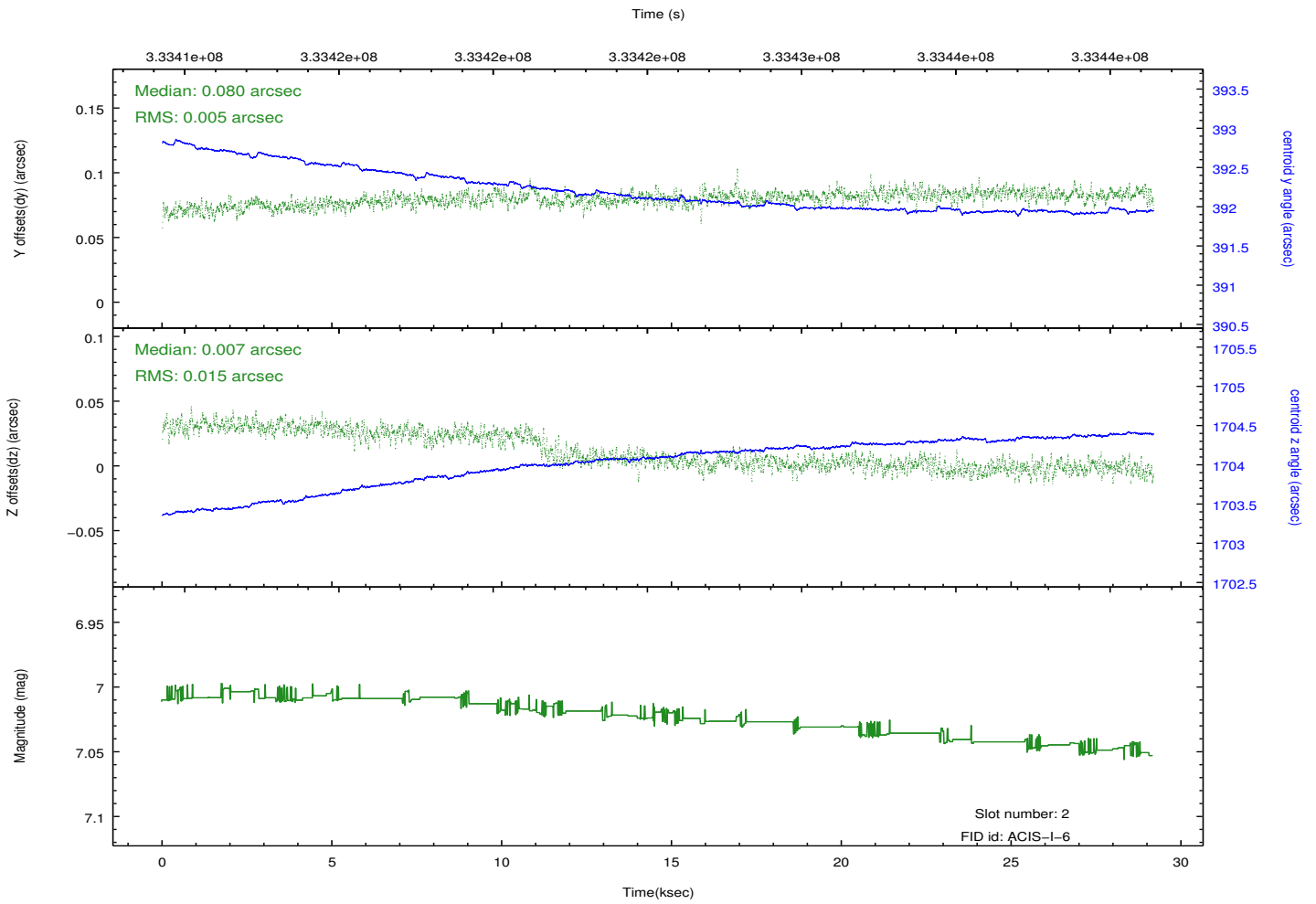
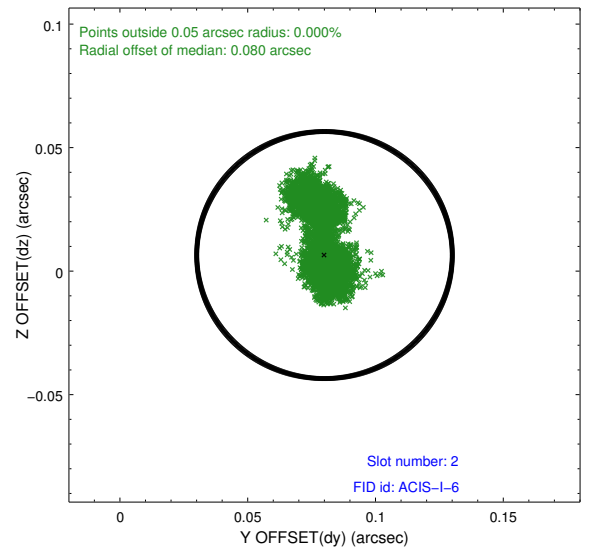
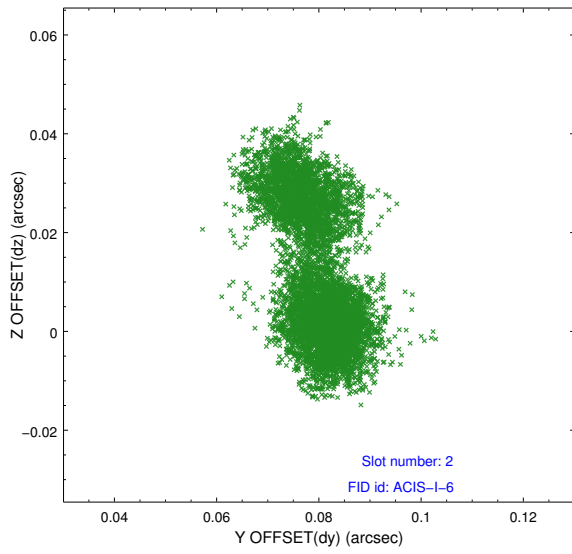
### 2.5.1 Slot 0



## 2.5.2 Slot 1



### 2.5.3 Slot 2



# A Summary

## A.1 Status

V&V Scientist	Beth Sundheim
V&V Date (YYYY-MM-DD)	2012.05.25
V&V Edition	1
V&V Disposition and Status	OK
V&V Charge Time	29.1775998

## A.2 Comments

Window preference met.

Phase constraint met.