

V&V Reference Report

L2 ASCDS Version : 8.4.5

Observation 924 - L2 Version 3
Chandra X-Ray Center

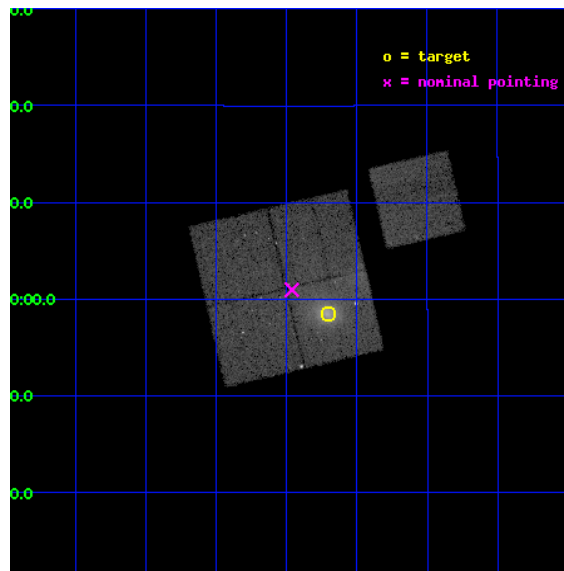
L2 Processing Date : Sep 5 2012

Contents

1	Front	2
2	OBI	3
2.1	OBI	3
2.1.1	Images	3
2.1.2	Bias	3
2.1.3	Parameters	4
2.1.4	Events	4
2.2	Compared Parameters	5
2.3	Aspect	6
2.4	Star Slots	9
2.4.1	Slot 3	9
2.4.2	Slot 4	10
2.4.3	Slot 5	11
2.4.4	Slot 6	12
2.4.5	Slot 7	13
2.5	FID Slots	14
2.5.1	Slot 0	14
2.5.2	Slot 1	15
2.5.3	Slot 2	16
A	Summary	17
A.1	Status	17
A.2	Comments	17

1 Front

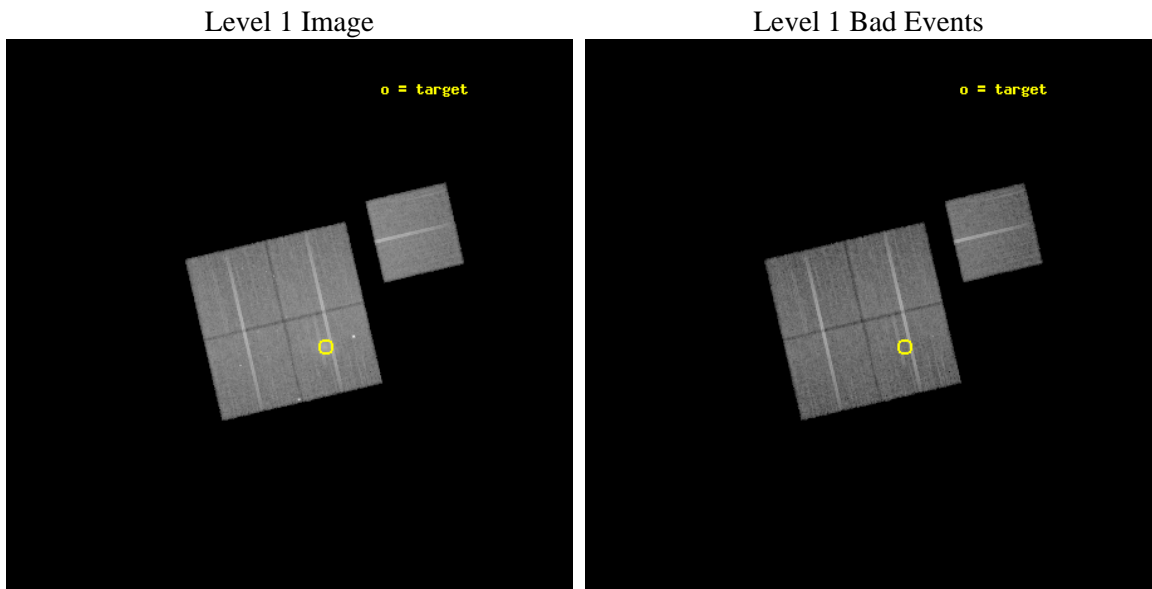
seq_num	800100	Sequence number
obs_id	924	Observation id
title	CLUSTER MASSES AT MODERATE REDSHIFTS	Proposal title
observer	Dr. Erica Ellingson	Principal investigator
object	MS 0906.5+1110	Source name
dtycycle	0	
cycle	P	events from which exps? Prim/Second/Both
ra_targ	137.30142	Observer's specified target RA [deg]
dec_targ	10.97517	Observer's specified target Dec [deg]
ra_nom	137.36564766606	Nominal RA [deg]
dec_nom	11.01622965203	Nominal Dec [deg]
roll_nom	76.888893428692	Nominal Roll [deg]
revision	3	Processing version of data
ontime	30134.40002805	Sum of GTIs [s]
livetime	29752.820110137	Livetime [s]
ontime0	30124.67726703	Sum of GTIs [s]
ontime1	30127.91805771	Sum of GTIs [s]
ontime2	30127.918077648	Sum of GTIs [s]
ontime3	30134.40002805	Sum of GTIs [s]
ontime6	30134.40002805	Sum of GTIs [s]
l2events	119297	Number of level 2 events



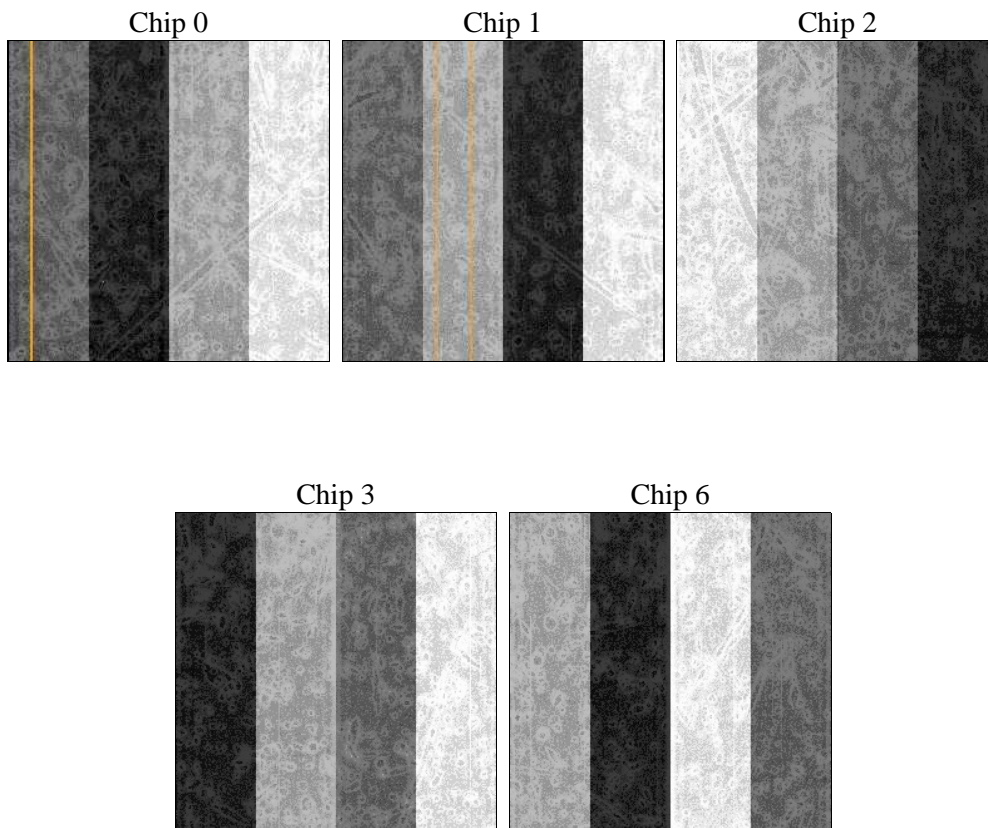
2 OBI

2.1 OBI

2.1.1 Images



2.1.2 Bias



2.1.3 Parameters

obi_num	0	Obi number	sched_exp_time	30000.000000	[s] Scheduled observation exposure time
ascdsver	8.4.5	Processing system revision	ontime	30134.40002805	Sum of GTIs [s]
caldbver	4.5.1.1	 	ontime0	30124.67726703	Sum of GTIs [s]
date	2012-09-05T16:02:50	Date and time of file creation	ontime1	30127.91805771	Sum of GTIs [s]
revision	3	Processing version of data	ontime2	30127.918077648	Sum of GTIs [s]
			ontime3	30134.40002805	Sum of GTIs [s]
			ontime6	30134.40002805	Sum of GTIs [s]
			l1events	925228	Number of level 1 events

2.1.4 Events

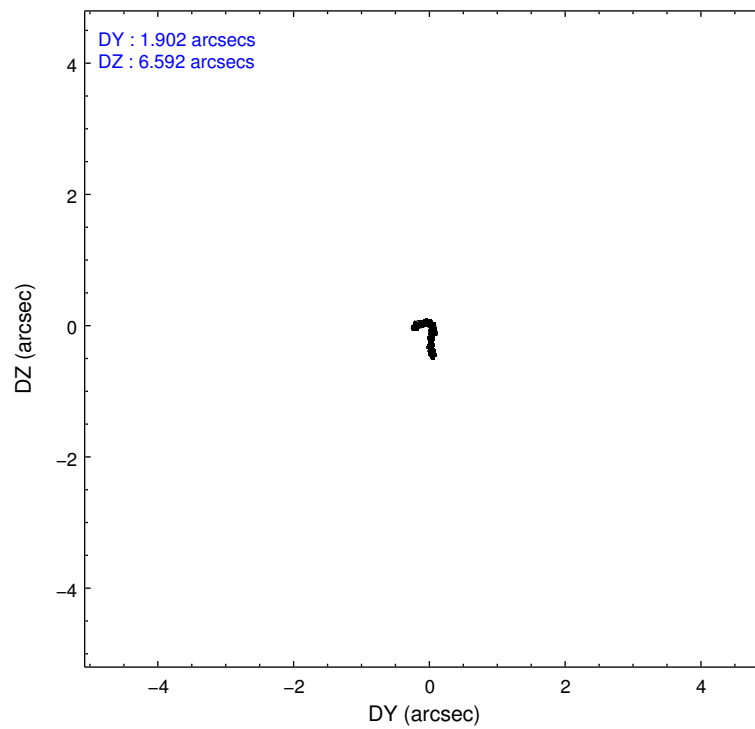
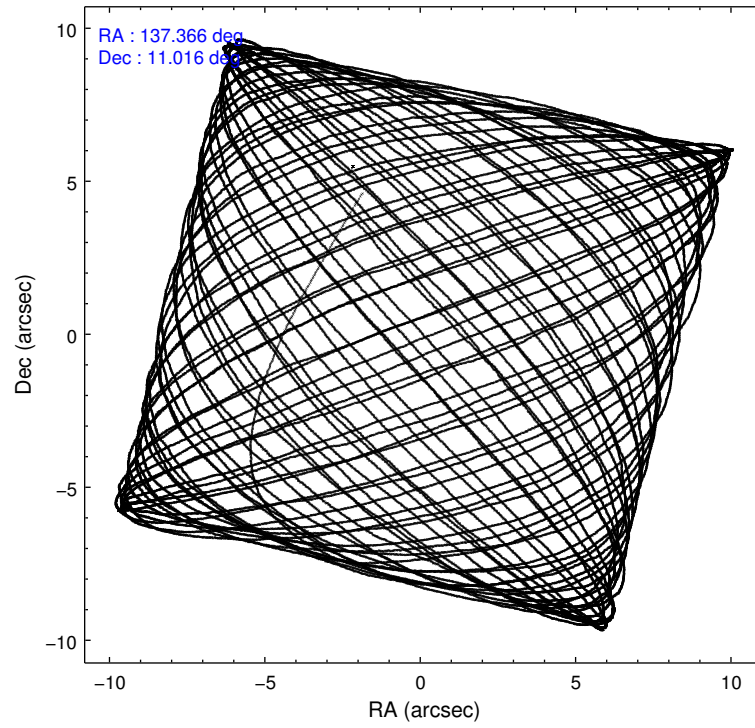
	ccd 0	ccd 1	ccd 2	ccd 3	ccd 6
level 1 events	171220	174426	187969	209111	182502
rejected events	150119	149548	165650	162057	162106
rejected %	87%	85%	88%	77%	88%

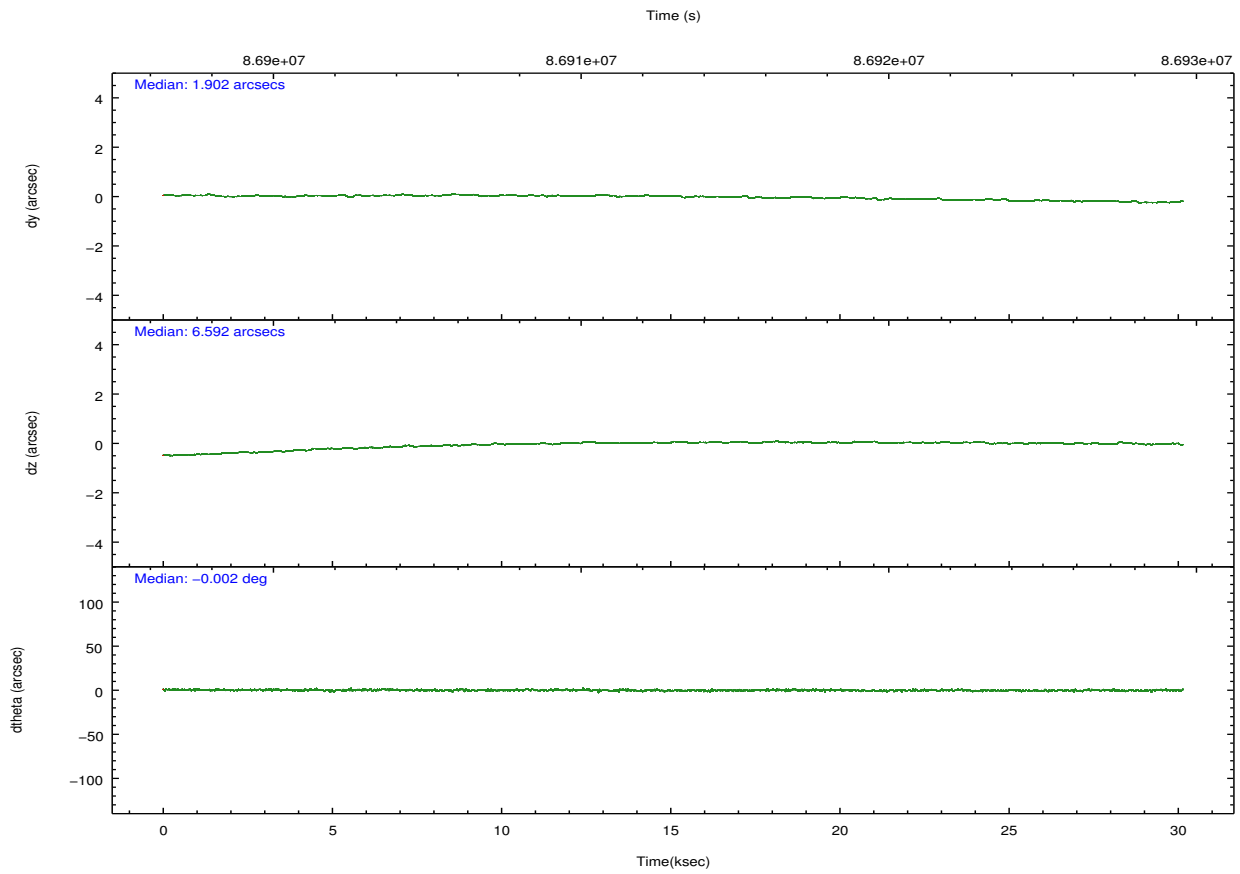
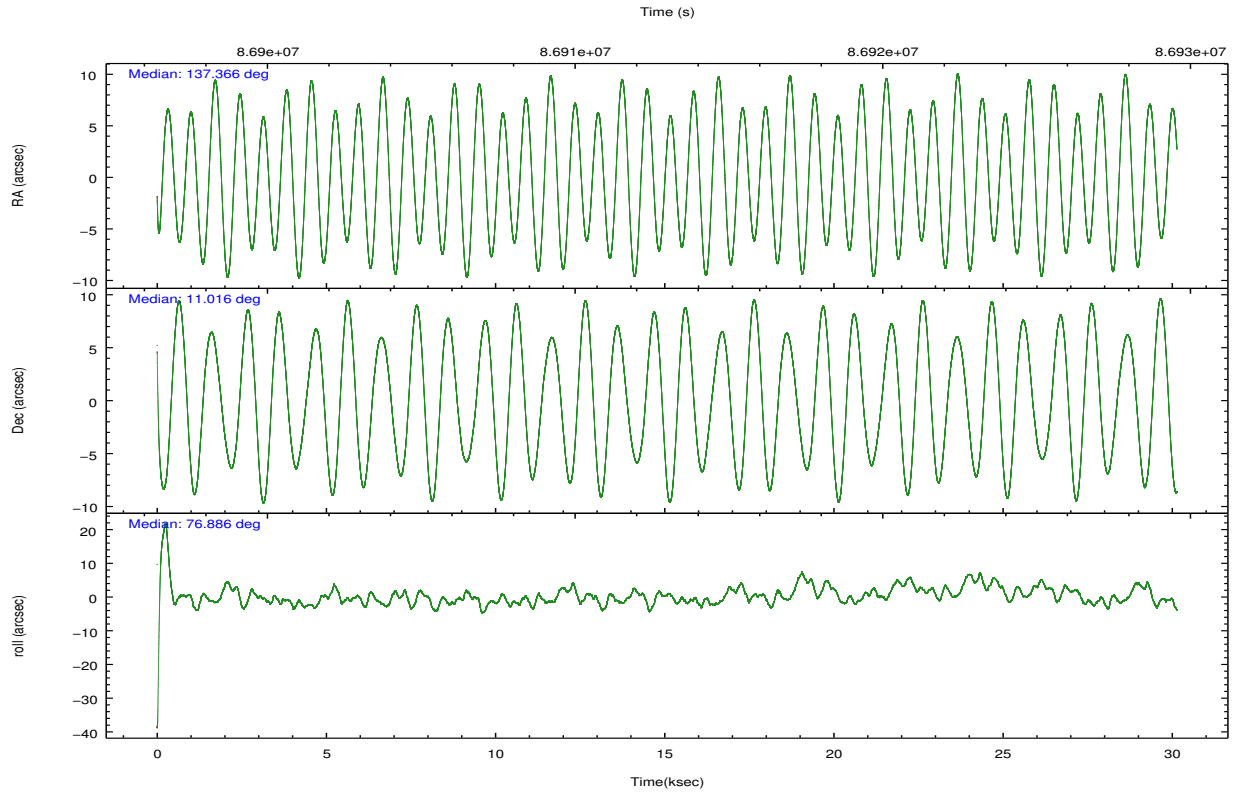
	ccd 0	ccd 1	ccd 2	ccd 3	ccd 6
grade 0 events	9246	11503	10484	30732	8303
	5%	6%	5%	14%	4%
grade 1 events	75	86	82	213	73
	0%	0%	0%	0%	0%
grade 2 events	4238	4648	4453	6475	3887
	2%	2%	2%	3%	2%
grade 3 events	2130	2346	1905	2842	2136
	1%	1%	1%	1%	1%
grade 4 events	1932	2330	1969	2733	2094
	1%	1%	1%	1%	1%
grade 5 events	6313	6749	5936	6845	7286
	3%	3%	3%	3%	3%
grade 6 events	3564	4064	3516	4285	3982
	2%	2%	1%	2%	2%
grade 7 events	143722	142700	159624	154986	154741
	83%	81%	84%	74%	84%

2.2 Compared Parameters

Parameter	Planned	Actual	Parameter	Planned	Actual
Instrument	ACIS	ACIS	Obspar format version number	7	7
Detector	ACIS-01236	ACIS-01236	Obspar file type	PREDICTED	ACTUAL
Grating	NONE	NONE	Obspar update status	NONE	UPDATED
Data mode	VFAINT	VFAINT	Number of optional ACIS chips dropped	0	0
Observation mode	POINTING	POINTING	On-chip summing requested	N	N
[deg] Pointing RA	137.373707	137.3656476660573	Subarray requested	NONE	NONE
[deg] Pointing Dec	10.989884	11.01622965202993	Alternating exposures requested	N	N
[deg] Pointing Roll	76.678697	76.88889342869236	[s] Primary exposure time	0.000000	3.2
[mm] SIM focus pos	-0.782348	-0.7809083437167272			
[mm] SIM defocus	0	0.001439871863259334			
[mm] SIM translation stage pos	-233.592463	-233.5874344608287			
[mm] SIM translation stage offset	0	-0.005018542100998502			
[s] Observation start time (MET)	86898058.184000	86897069.629784			
Observation start date	2000-10-02T18:19:54	2000-10-02T18:04:29			
[s] Observation end time (MET)	86928058.184000	86928867.69348399			
Observation end date	2000-10-03T02:39:54	2000-10-03T02:54:27			
Read mode	TIMED	TIMED			

2.3 Aspect



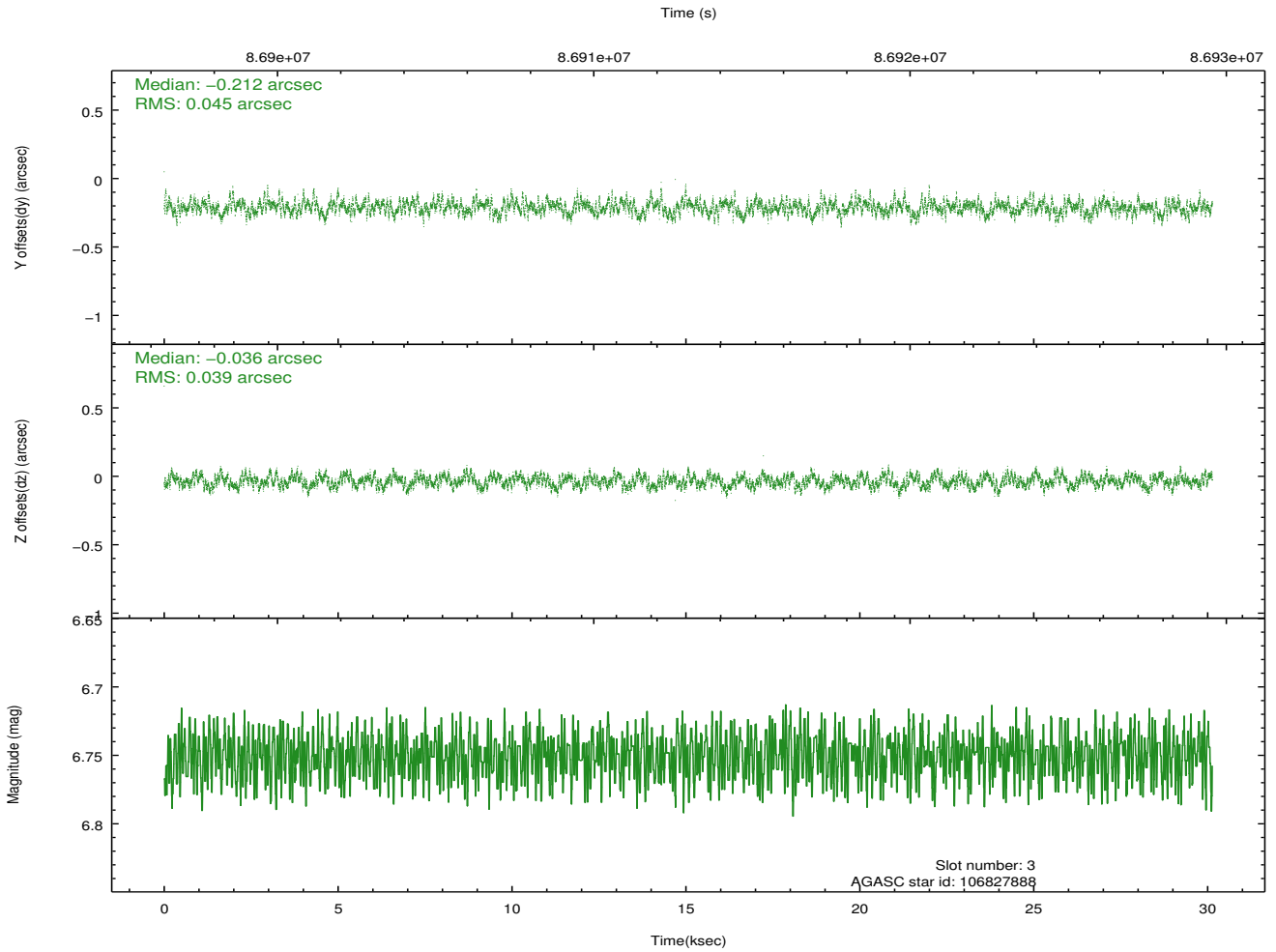
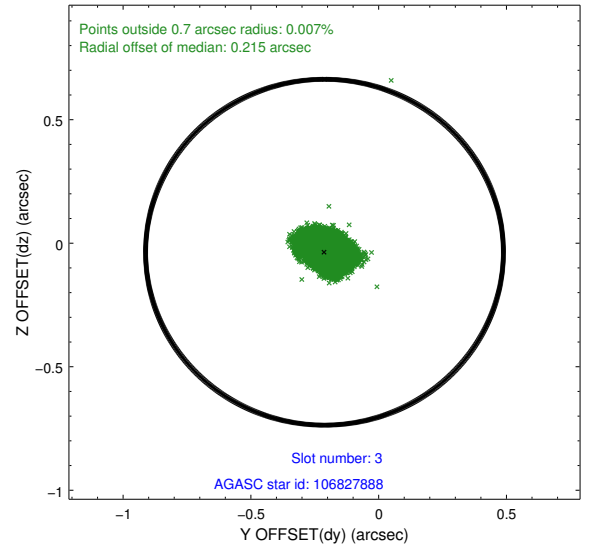
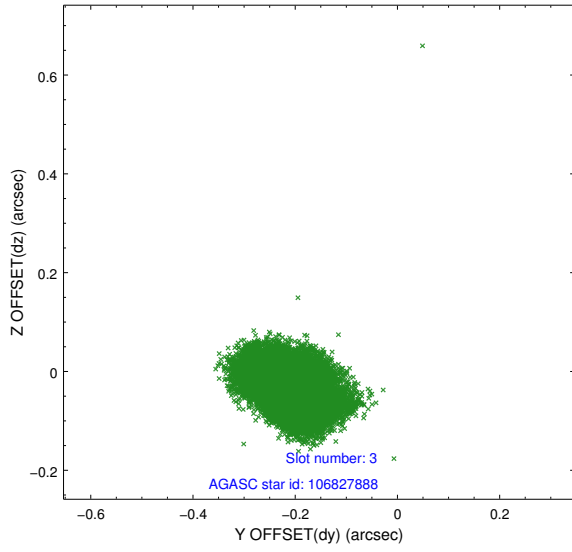


Slot Statistics

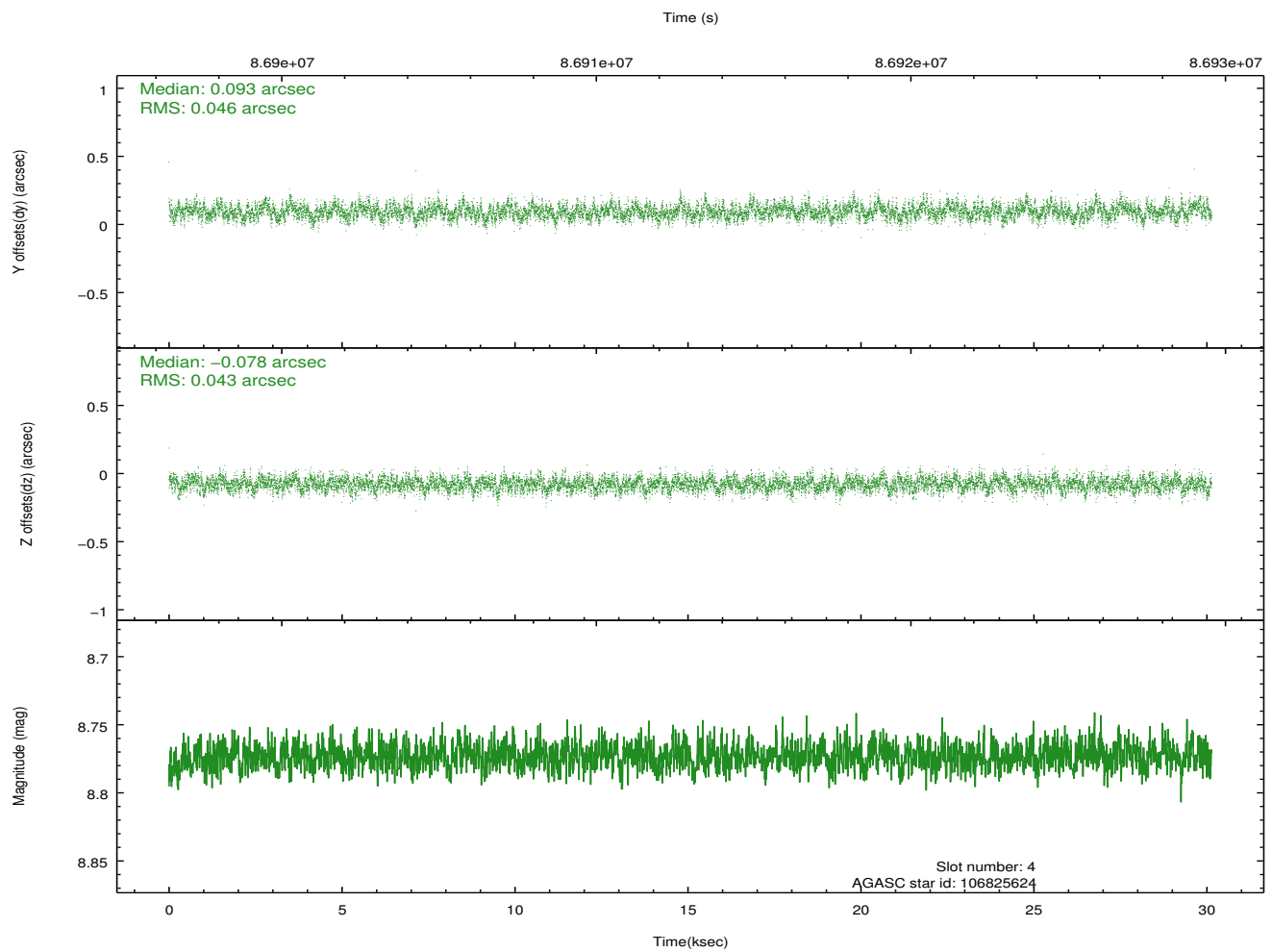
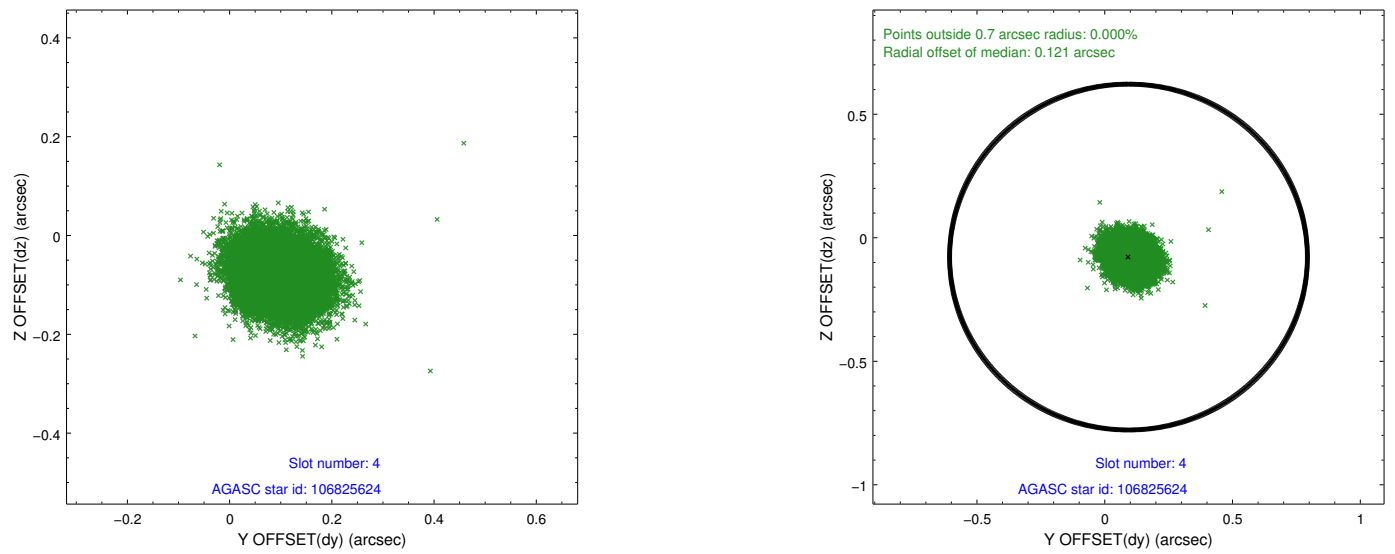
slot	status	id	mag	n_pts	med_dy	med_dz	dr1	dr2	ra	dec	mean_y	mean_z
0	FID	ACIS-I-2	7.16	7351	-0.046	-0.075	0.009	0.015	0.000000	0.000000	-756.26	-836.35
1	FID	ACIS-I-4	7.18	7351	-0.030	0.054	0.008	0.015	0.000000	0.000000	2157.78	1069.93
2	FID	ACIS-I-5	7.23	7352	-0.024	0.090	0.011	0.018	0.000000	0.000000	-1809.98	1067.88
3	GUIDE	106827888	6.75	14702	-0.212	-0.036	0.063	0.102	137.443435	11.564377	2069.44	237.42
4	GUIDE	106825624	8.77	14699	0.093	-0.078	0.068	0.108	137.293195	10.821701	-654.09	137.39
5	GUIDE	106826608	8.93	14697	-0.098	-0.079	0.088	0.139	136.887374	11.444072	1197.36	2047.02
6	GUIDE	106825944	9.29	14694	0.095	0.166	0.078	0.124	137.716825	10.697762	-742.29	-1422.87
7	GUIDE	106827264	9.85	14657	0.124	0.029	0.101	0.168	137.059672	10.601302	-1616.21	759.12

2.4 Star Slots

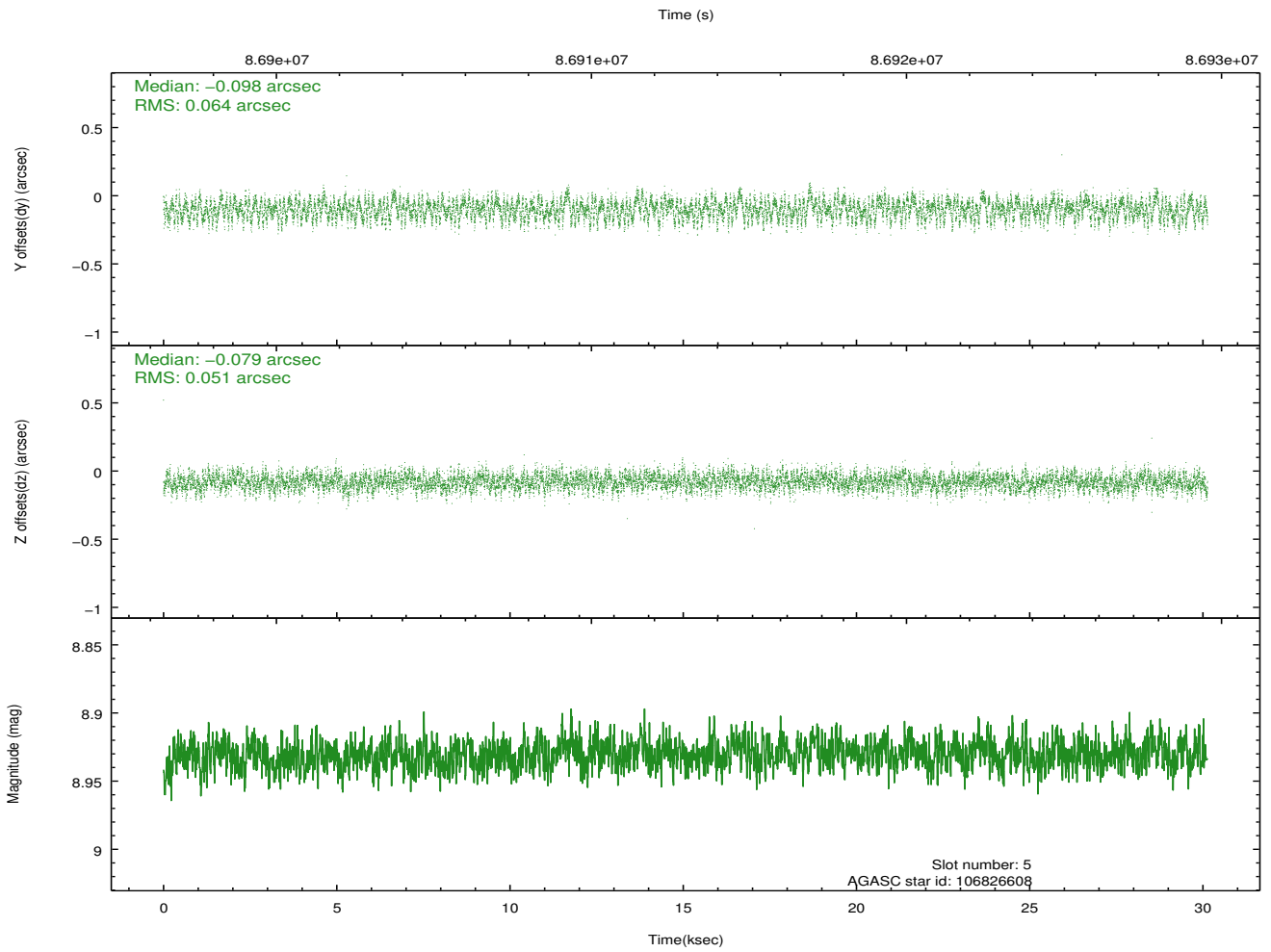
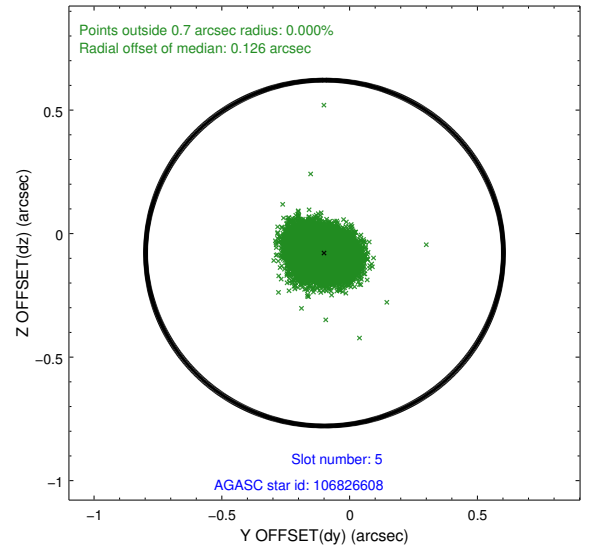
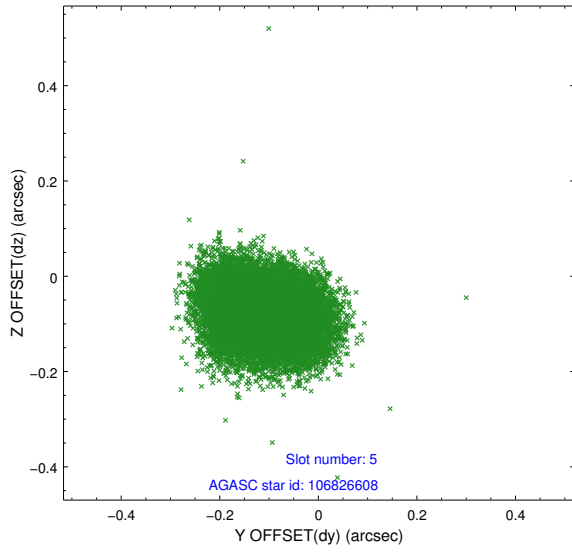
2.4.1 Slot 3



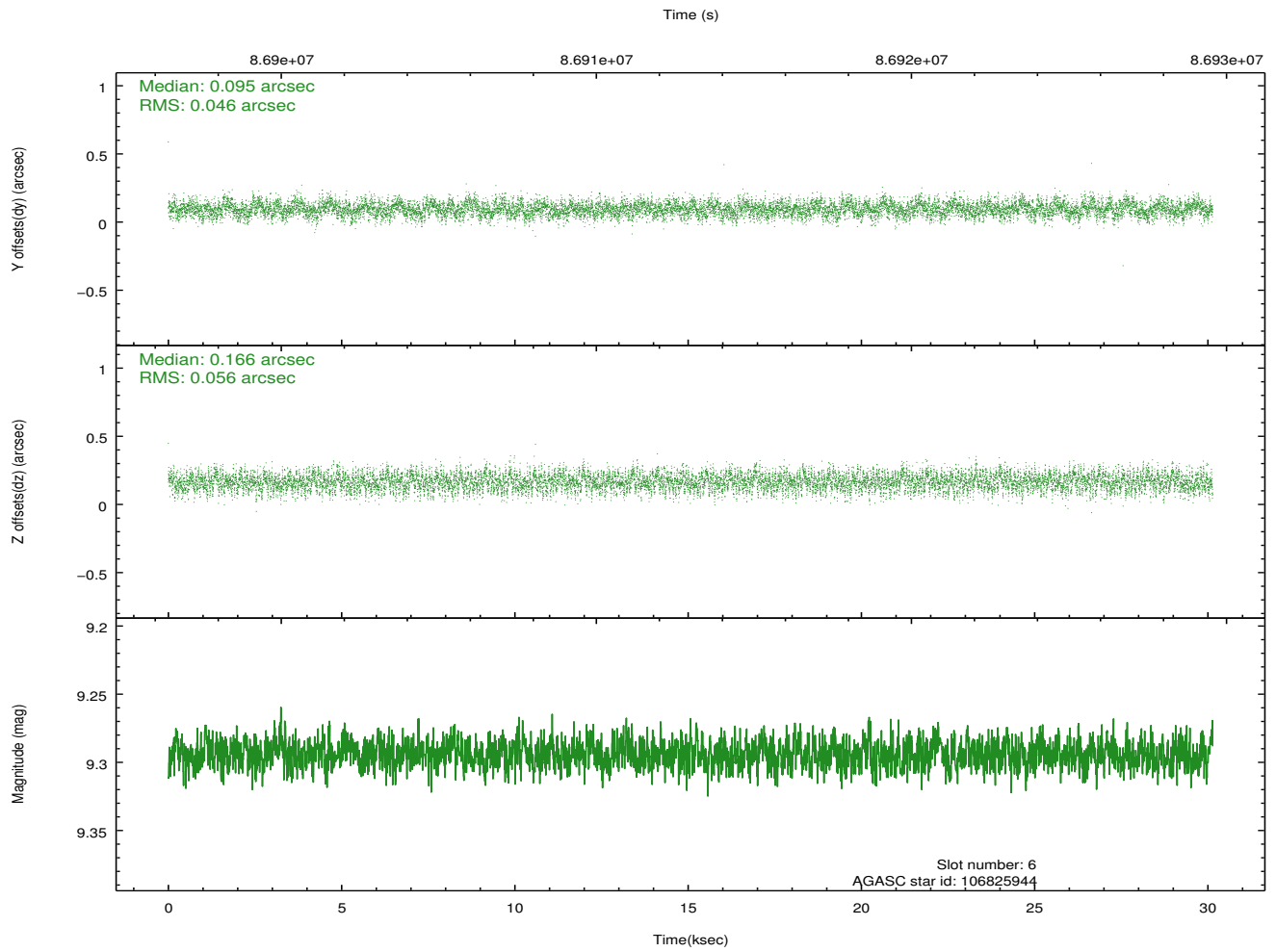
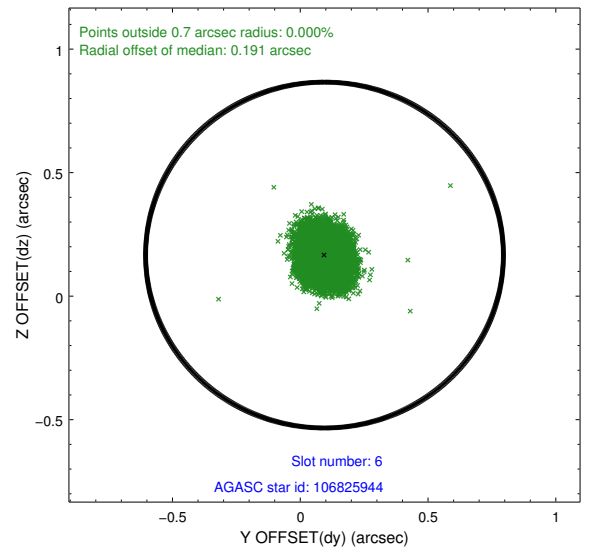
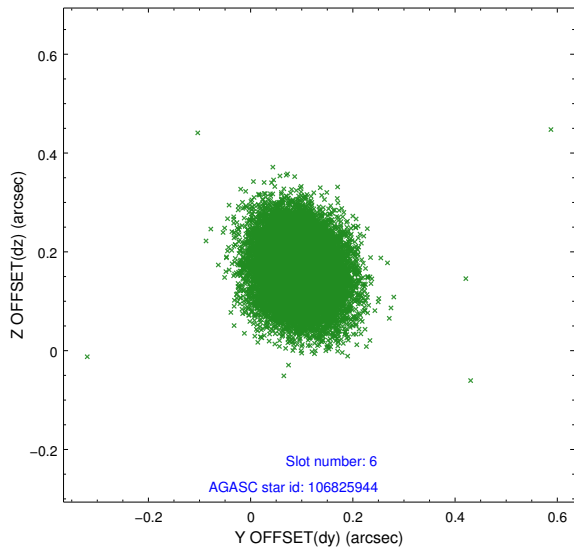
2.4.2 Slot 4



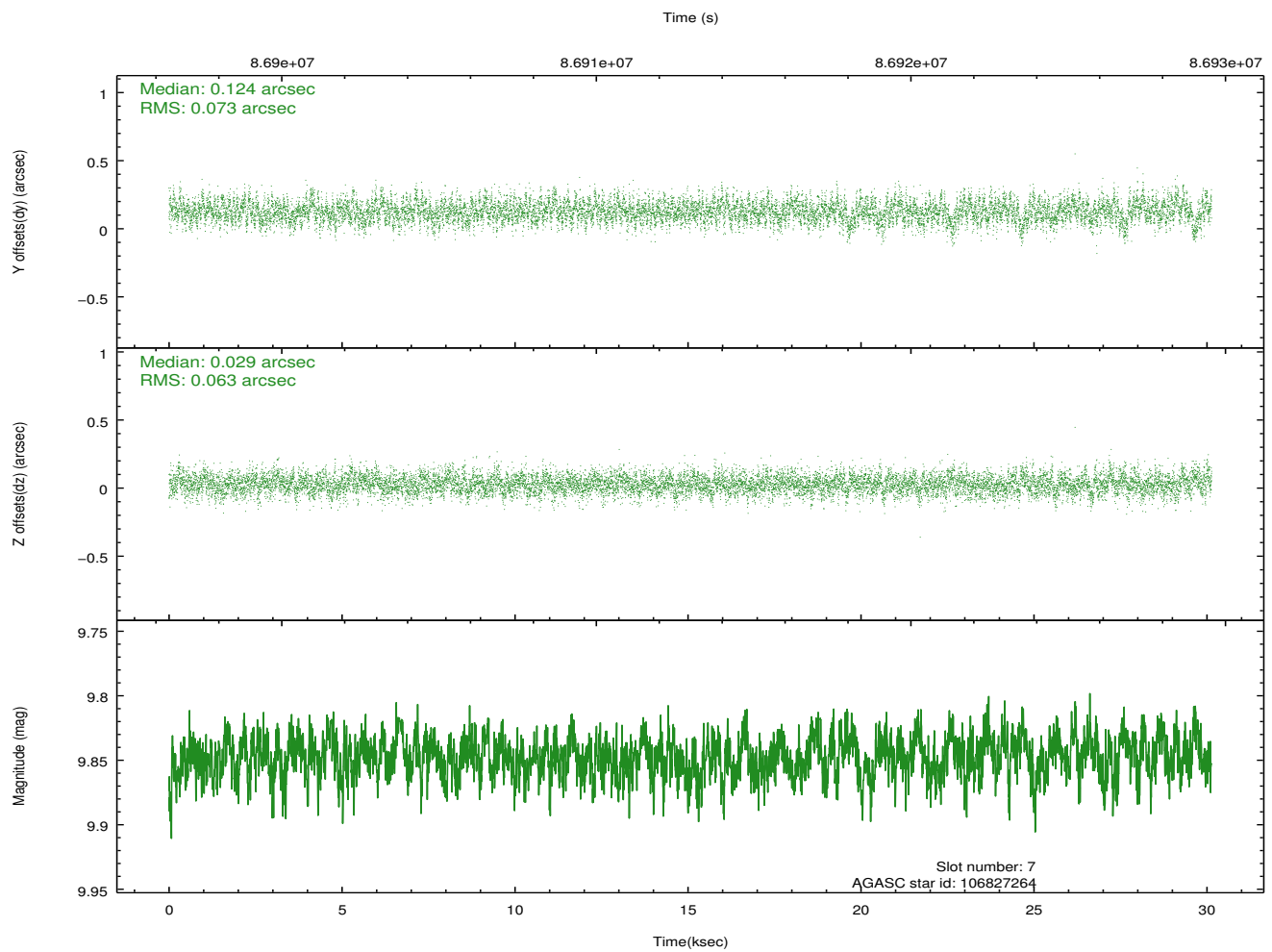
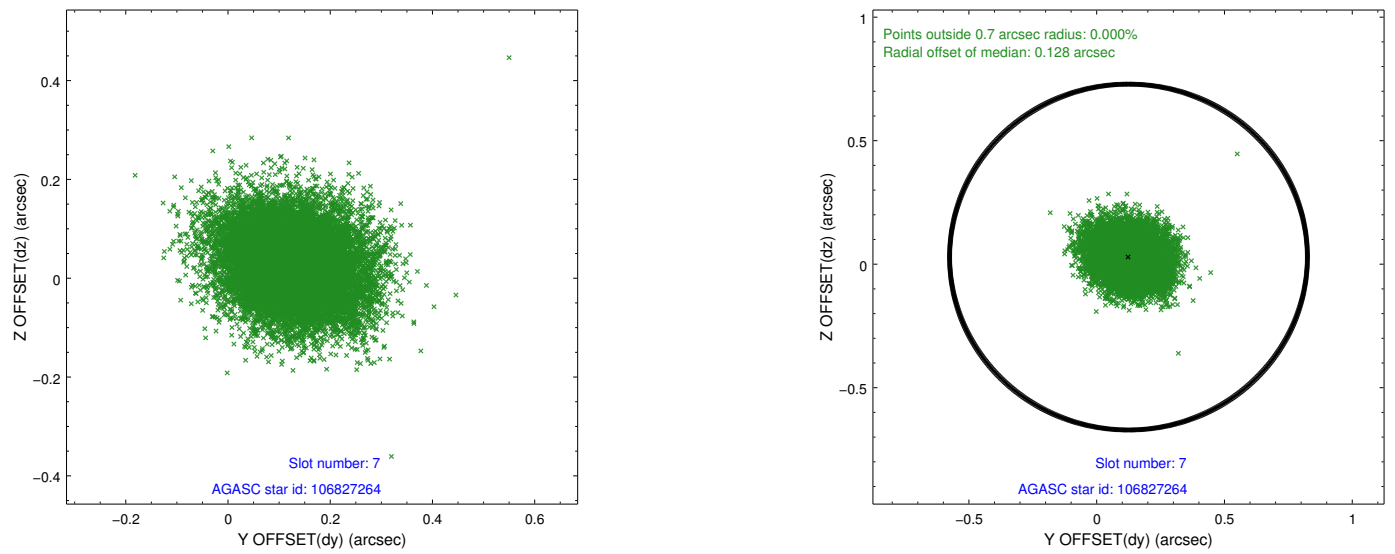
2.4.3 Slot 5



2.4.4 Slot 6

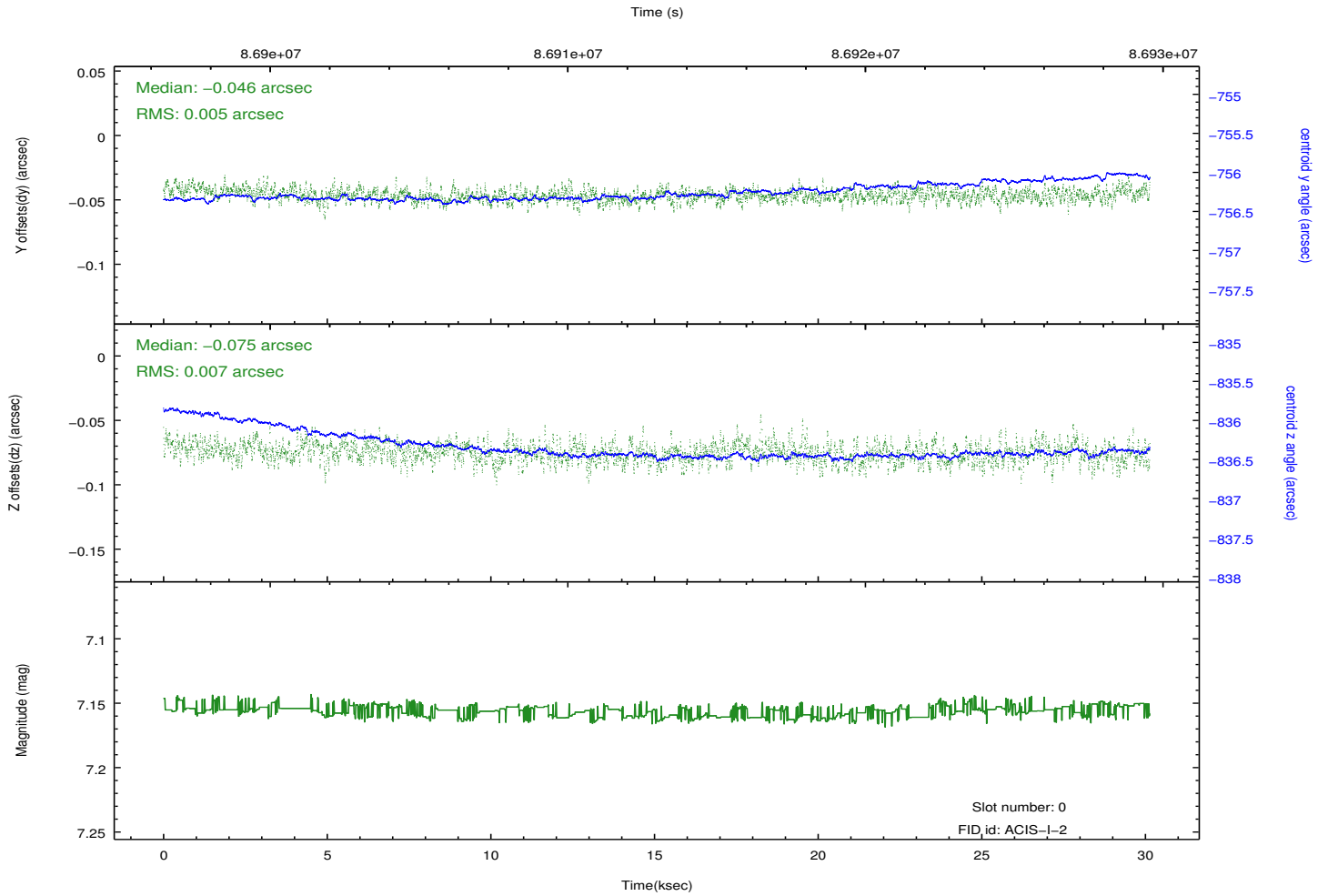
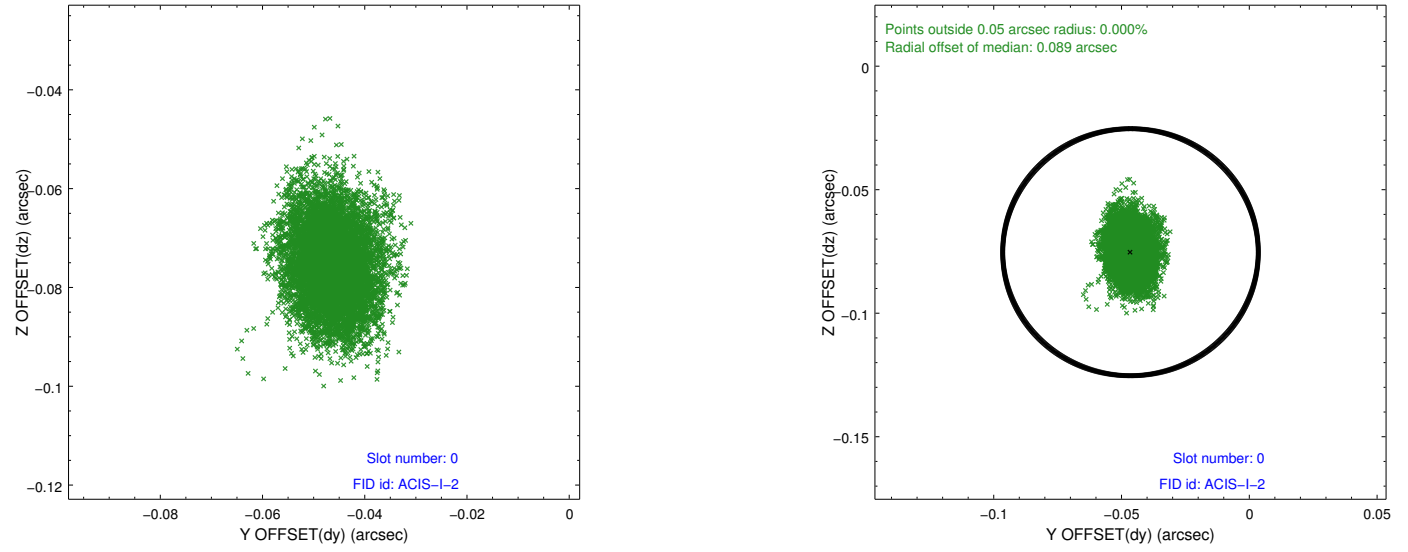


2.4.5 Slot 7

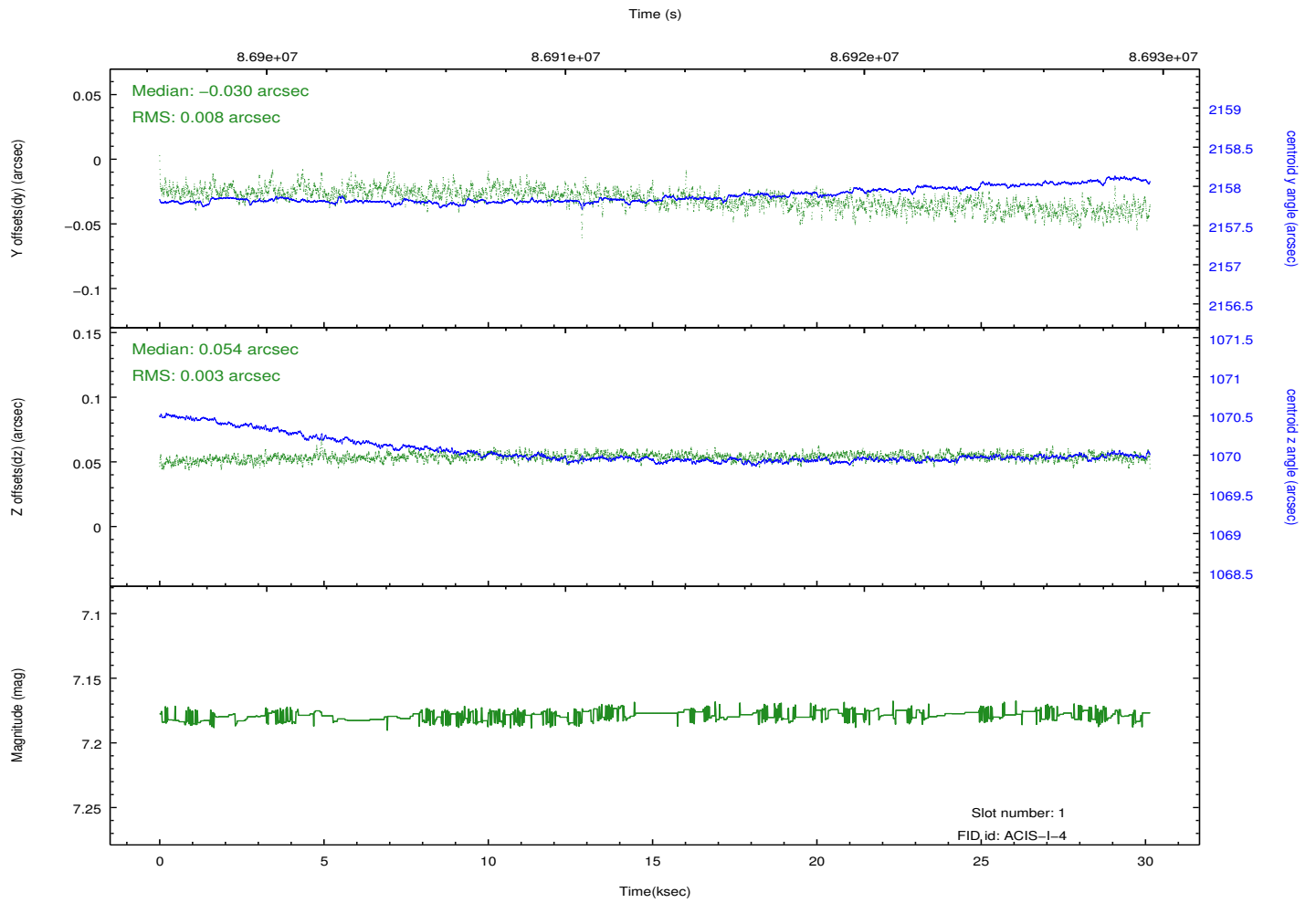
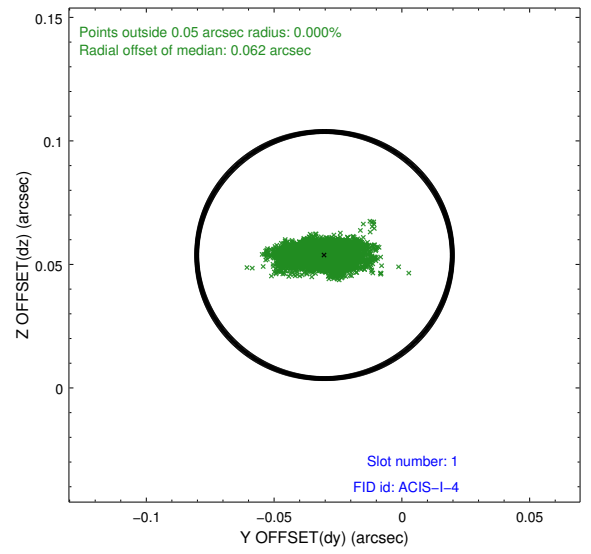
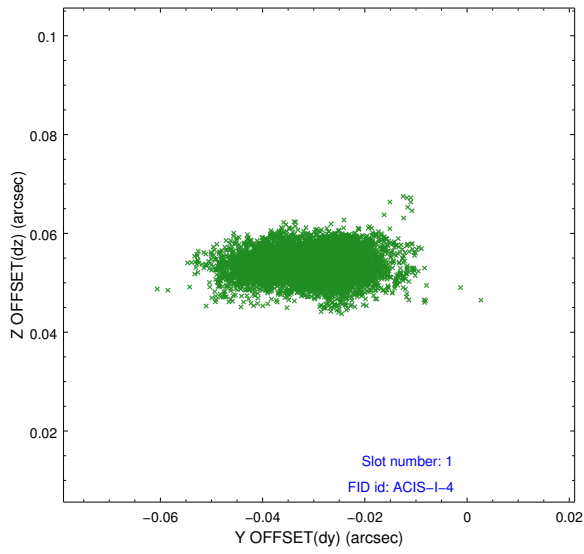


2.5 FID Slots

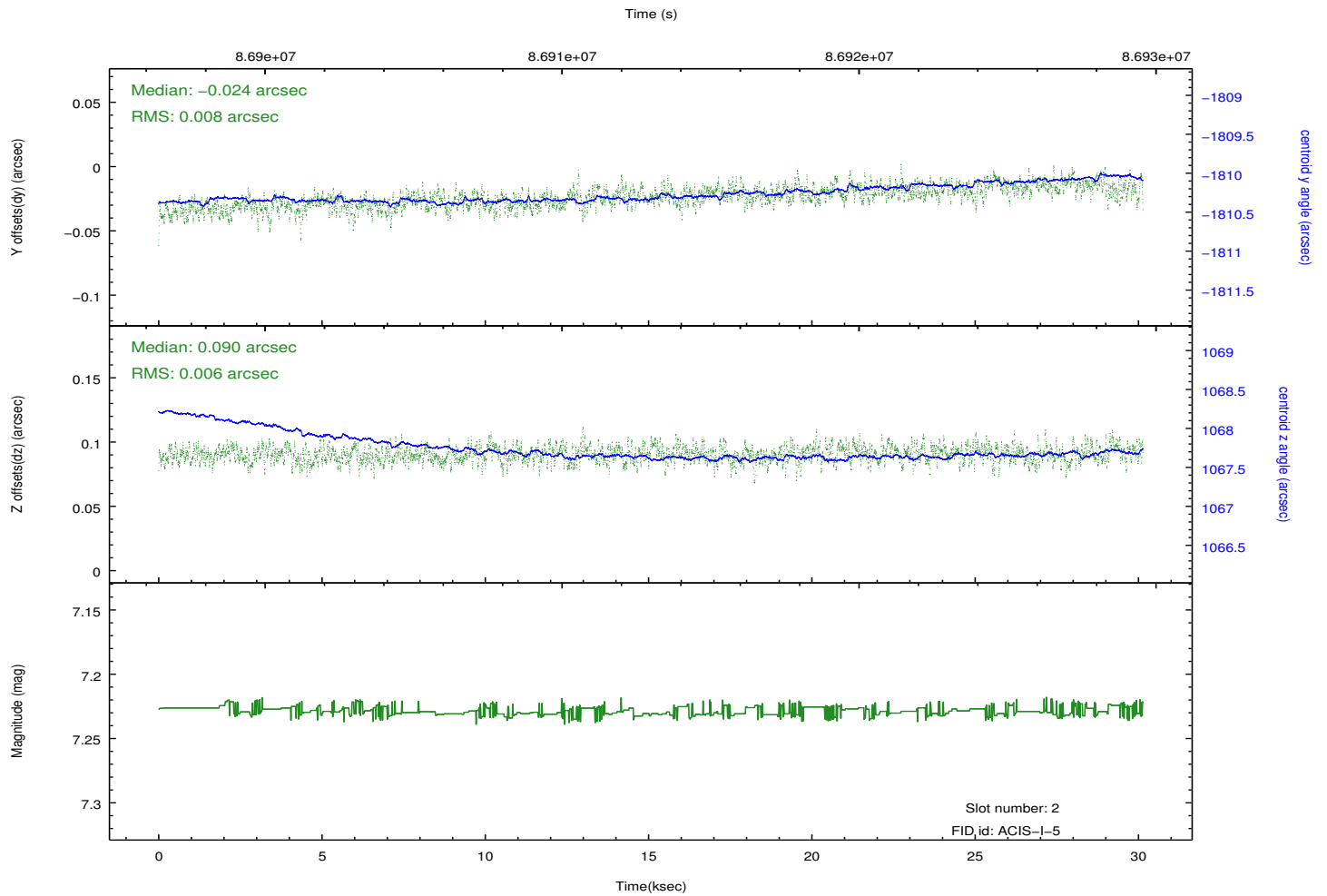
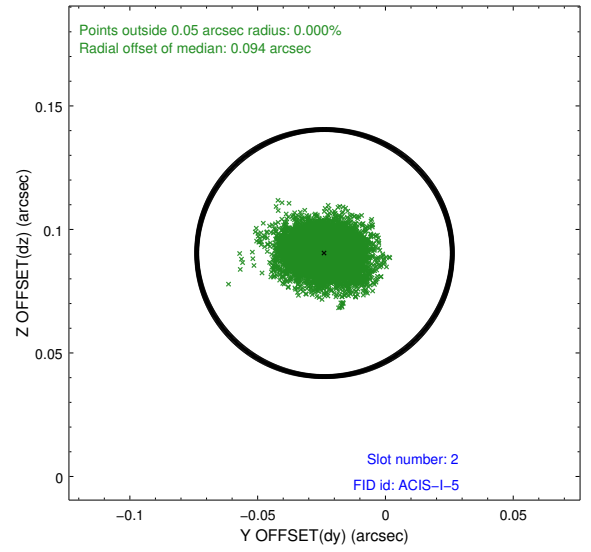
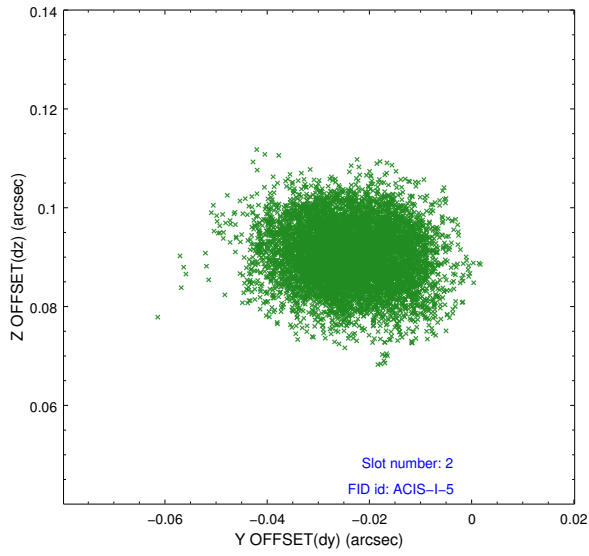
2.5.1 Slot 0



2.5.2 Slot 1



2.5.3 Slot 2



A Summary

A.1 Status

V&V Scientist	Jen Lauer
V&V Date (YYYY-MM-DD)	2012.09.14
V&V Edition	1
V&V Disposition and Status	OK
V&V Charge Time	30.134

A.2 Comments