

V&V Reference Report

L2 ASCDS Version : 8.4.4

Observation 9334 - L2 Version 2
Chandra X-Ray Center

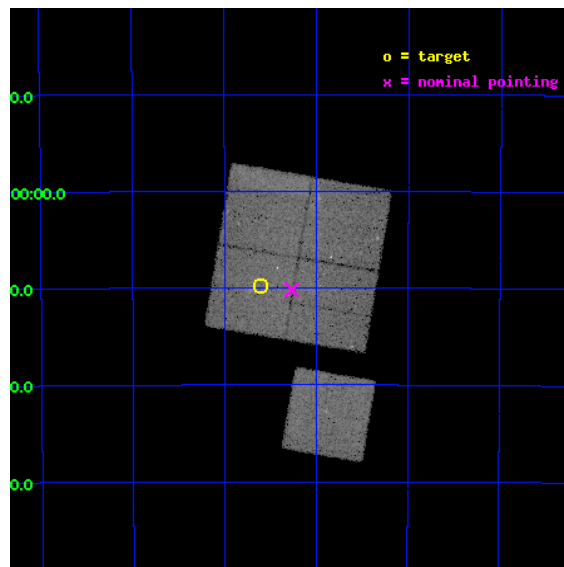
L2 Processing Date : Jun 2 2012

Contents

1	Front	2
2	OBI	3
2.1	OBI	3
2.1.1	Images	3
2.1.2	Bias	3
2.1.3	Parameters	4
2.1.4	Events	4
2.2	Compared Parameters	5
2.3	Aspect	6
2.4	Star Slots	9
2.4.1	Slot 3	9
2.4.2	Slot 4	10
2.4.3	Slot 5	11
2.4.4	Slot 6	12
2.4.5	Slot 7	13
2.5	FID Slots	14
2.5.1	Slot 0	14
2.5.2	Slot 1	15
2.5.3	Slot 2	16
A	Summary	17
A.1	Status	17
A.2	Comments	17

1 Front

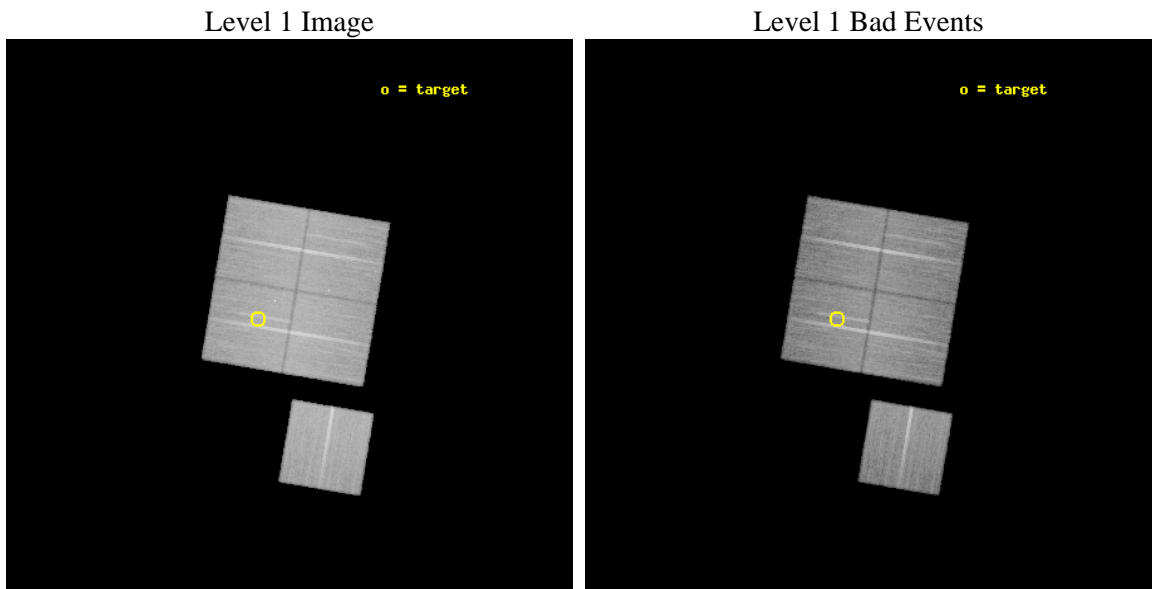
seq_num	800671	Sequence number
obs_id	9334	Observation id
title	Chandra Observations of SZ-selected Galaxy Clusters Detected by the South Pole Telescope	Proposal title
observer	Professor Gordon Garmire	Principal investigator
object	SPT-CL 2359-5009	Source name
dtcycle	0	
cycle	P	events from which exps? Prim/Second/Both
ra_targ	359.901	Observer's specified target RA [deg]
dec_targ	-50.1625	Observer's specified target Dec [deg]
ra_nom	359.81680361736	Nominal RA [deg]
dec_nom	-50.169671314124	Nominal Dec [deg]
roll_nom	189.59415902883	Nominal Roll [deg]
revision	2	Processing version of data
ontime	30144.400231838	Sum of GTIs [s]
livetime	29750.541450825	Livetime [s]
ontime0	30141.259261549	Sum of GTIs [s]
ontime1	30144.400231838	Sum of GTIs [s]
ontime2	30141.259171844	Sum of GTIs [s]
ontime3	30144.400231838	Sum of GTIs [s]
ontime6	30144.400231838	Sum of GTIs [s]
l2events	118271	Number of level 2 events



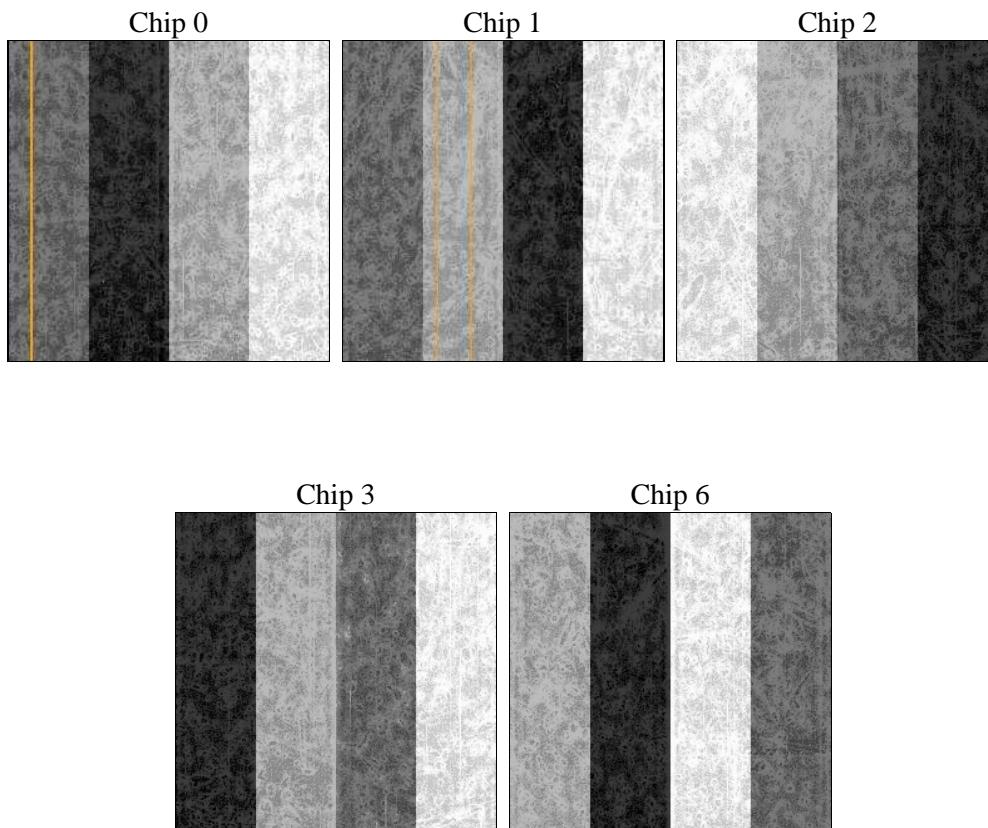
2 OBI

2.1 OBI

2.1.1 Images



2.1.2 Bias



2.1.3 Parameters

obi_num	0	Obi number	sched_exp_time	30000.000000	[s] Scheduled observation exposure time
ascdsver	8.4.4	Processing system revision	ontime	30144.400231838	Sum of GTIs [s]
caldbver	4.4.9	 	ontime0	30141.259261549	Sum of GTIs [s]
date	2012-06-02T15:10:23	Date and time of file creation	ontime1	30144.400231838	Sum of GTIs [s]
revision	2	Processing version of data	ontime2	30141.259171844	Sum of GTIs [s]
			ontime3	30144.400231838	Sum of GTIs [s]
			ontime6	30144.400231838	Sum of GTIs [s]
			l1events	1297244	Number of level 1 events

2.1.4 Events

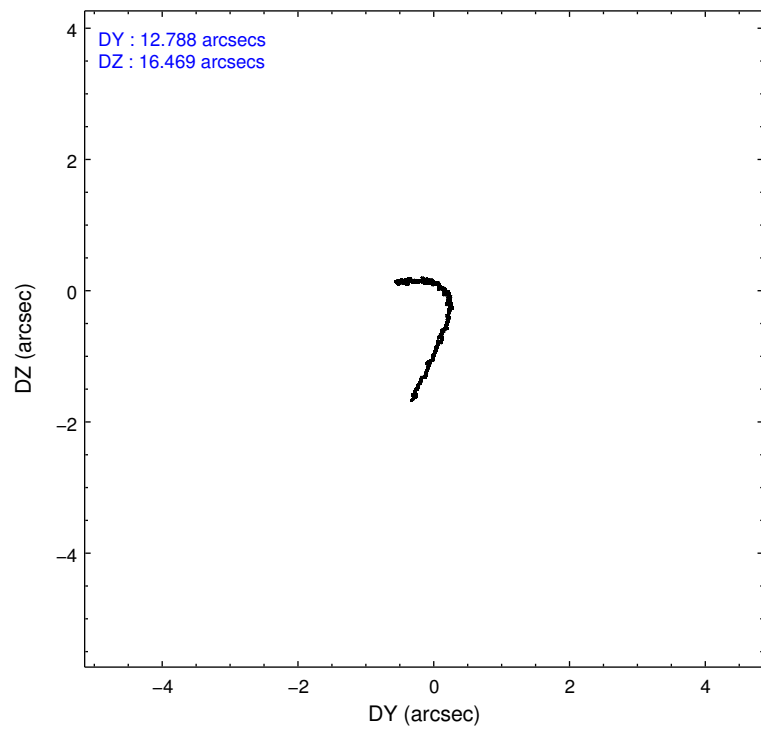
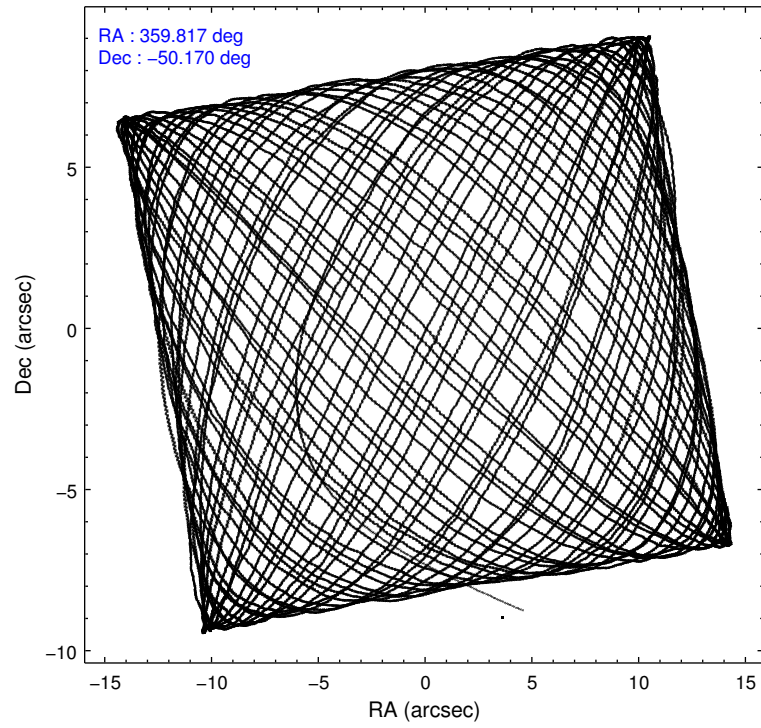
	ccd 0	ccd 1	ccd 2	ccd 3	ccd 6
level 1 events	247603	248792	274241	260286	266322
rejected events	219783	218219	247312	232927	237479
rejected %	88%	87%	90%	89%	89%

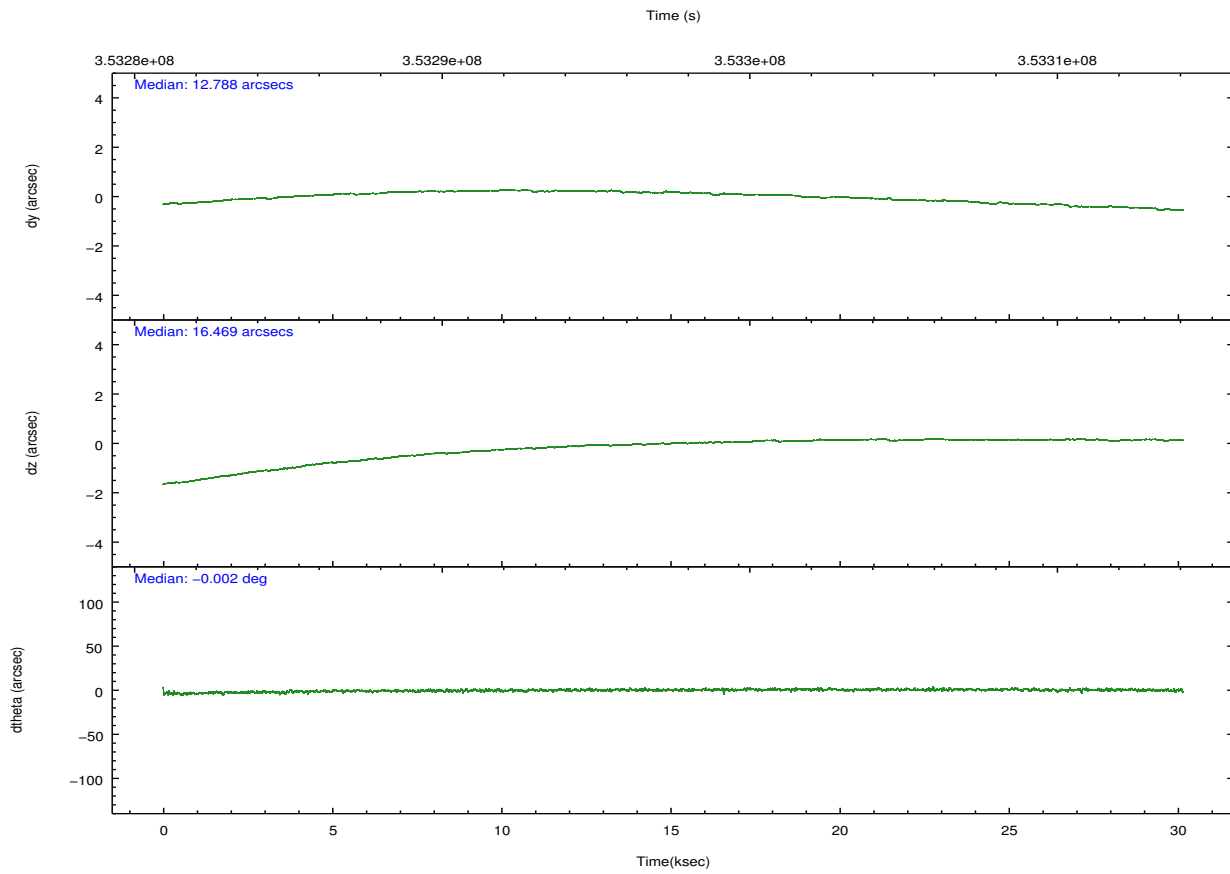
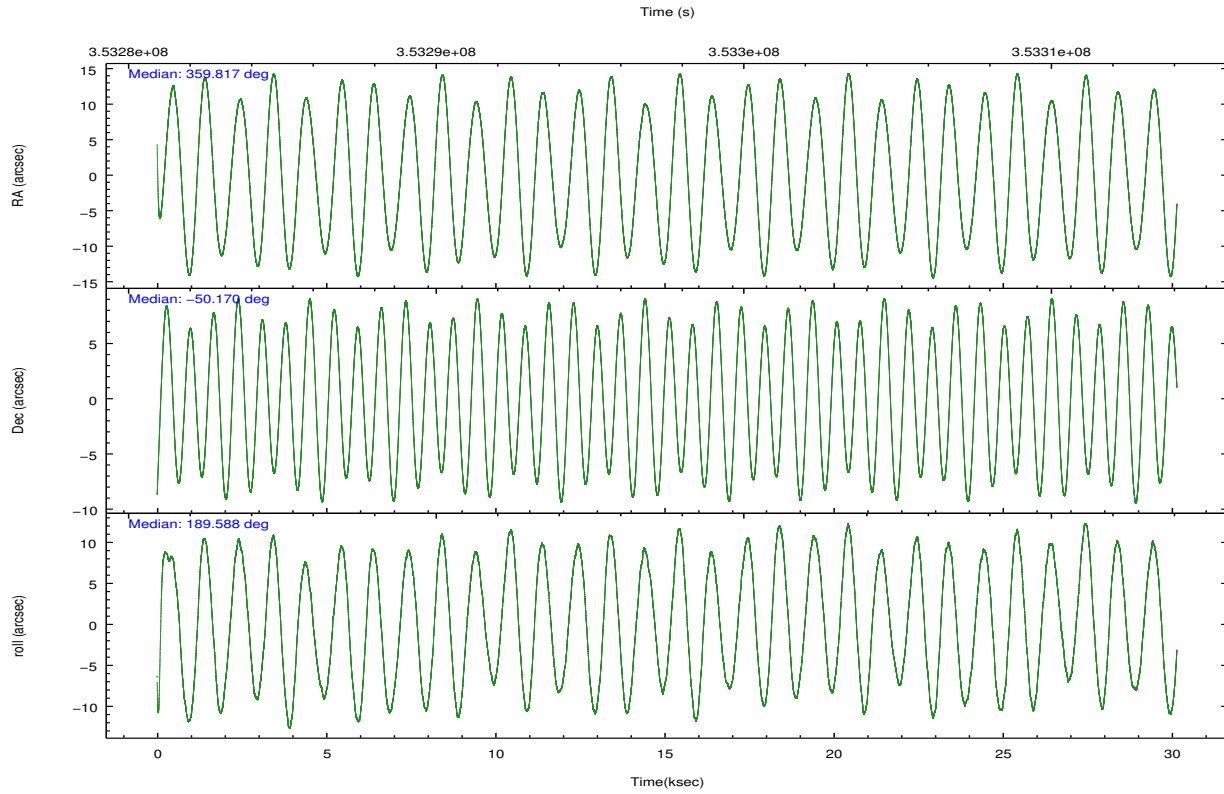
	ccd 0	ccd 1	ccd 2	ccd 3	ccd 6
grade 0 events	10601	11409	10285	10952	11067
	4%	4%	3%	4%	4%
grade 1 events	132	148	178	177	136
	0%	0%	0%	0%	0%
grade 2 events	6607	7087	6448	5927	6271
	2%	2%	2%	2%	2%
grade 3 events	2900	3146	2836	2869	2941
	1%	1%	1%	1%	1%
grade 4 events	2798	3156	2832	2827	2899
	1%	1%	1%	1%	1%
grade 5 events	9358	10229	8984	10803	10721
	3%	4%	3%	4%	4%
grade 6 events	5279	6130	4806	5097	5981
	2%	2%	1%	1%	2%
grade 7 events	209928	207487	237872	221634	226306
	84%	83%	86%	85%	84%

2.2 Compared Parameters

Parameter	Planned	Actual	Parameter	Planned	Actual
Instrument	ACIS	ACIS	Obspar format version number	7	7
Detector	ACIS-01236	ACIS-01236	Obspar file type	PREDICTED	ACTUAL
Grating	NONE	NONE	Obspar update status	NONE	UPDATED
Data mode	VFAINT	VFAINT	CCD I0 on	Y	Y
Observation mode	POINTING	POINTING	CCD I1 on	Y	Y
[deg] Pointing RA	359.849772	359.8168036173561	CCD I2 on	Y	Y
[deg] Pointing Dec	-50.152064	-50.16967131412365	CCD I3 on	Y	Y
[deg] Pointing Roll	189.410794	189.5941590288305	CCD S0 on	N	N
[mm] SIM focus pos	-0.782348	-0.7809083437167272	CCD S1 on	N	N
[mm] SIM defocus	0	0.001439871863259334	CCD S2 on	O1	Y
[mm] SIM translation stage pos	-225.840463	-225.8433433320239	CCD S3 on	N	N
[mm] SIM translation stage offset	-7.752	-7.749109670905796	CCD S4 on	N	N
[s] Observation start time (MET)	353282566.184000	353281405.90129	CCD S5 on	N	N
Observation start date	2009-03-12T22:01:40	2009-03-12T21:43:25	Number of optional ACIS chips dropped	0	0
[s] Observation end time (MET)	353312566.184000	353314077.26542	On-chip summing requested	N	N
Observation end date	2009-03-13T06:21:40	2009-03-13T06:47:57	Subarray requested	NONE	NONE
Read mode	TIMED	TIMED	Alternating exposures requested	N	N
			[s] Primary exposure time	0.000000	3.1

2.3 Aspect





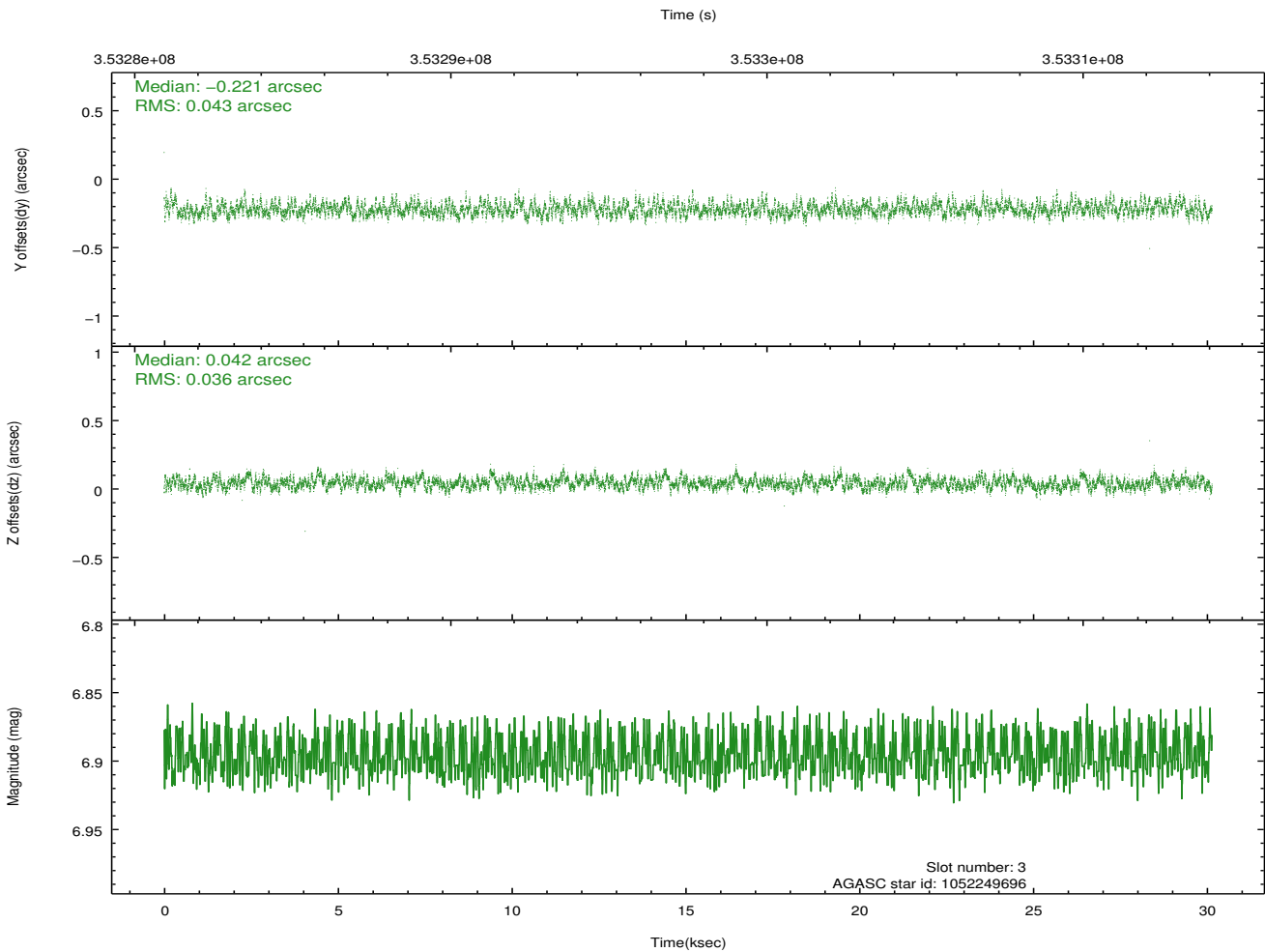
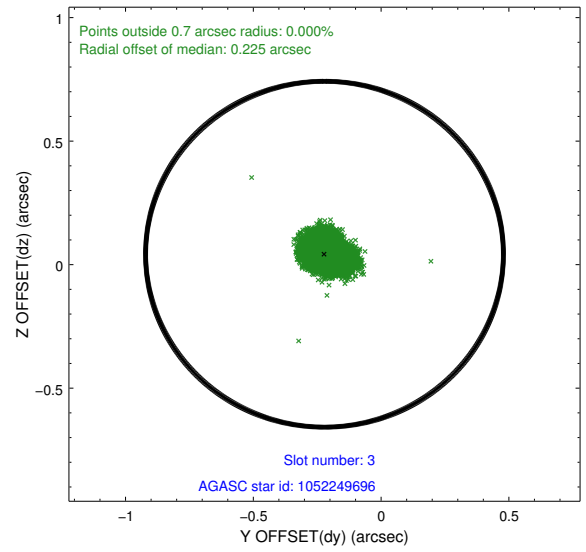
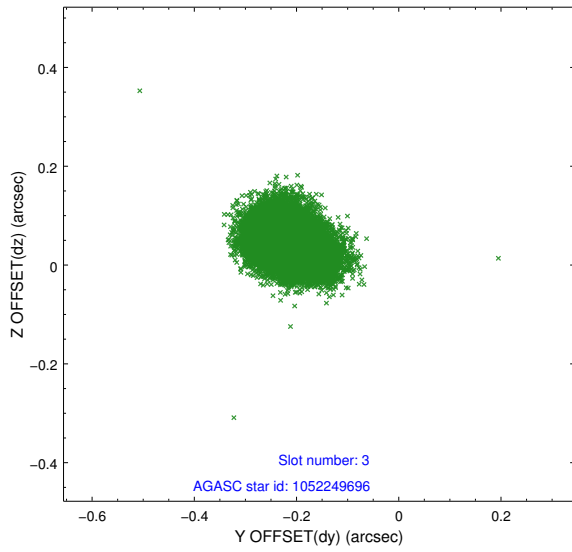
Slot Statistics

slot	status	id	mag	n_pts	med_dy	med_dz	dr1	dr2	ra	dec	mean_y	mean_z
0	FID	ACIS-I-1	7.00	7353	0.097	-0.129	0.014	0.060	0.000000	0.000000	926.73	-999.06
1	FID	ACIS-I-2	6.97	7354	-0.227	0.039	0.012	0.030	0.000000	0.000000	-768.06	-1004.37
2	FID	ACIS-I-4	6.90	7354	0.033	0.155	0.010	0.030	0.000000	0.000000	2146.07	901.94
3	GUIDE	1052249696	6.90	14706	-0.221	0.042	0.060	0.095	0.223276	-50.446456	-671.14	1187.86
4	GUIDE	1108871768	9.32	14681	0.187	0.115	0.107	0.175	359.910349	-49.832519	-325.93	-1111.29
5	GUIDE	1109267592	9.30	14683	0.053	-0.306	0.103	0.165	359.147847	-50.303746	1683.98	283.45
6	GUIDE	1109269688	7.62	14706	-0.080	0.040	0.063	0.099	358.848458	-50.113922	2260.98	-497.60
7	GUIDE	1109269904	8.40	14702	0.060	0.109	0.077	0.120	359.567113	-50.130971	630.98	-179.59

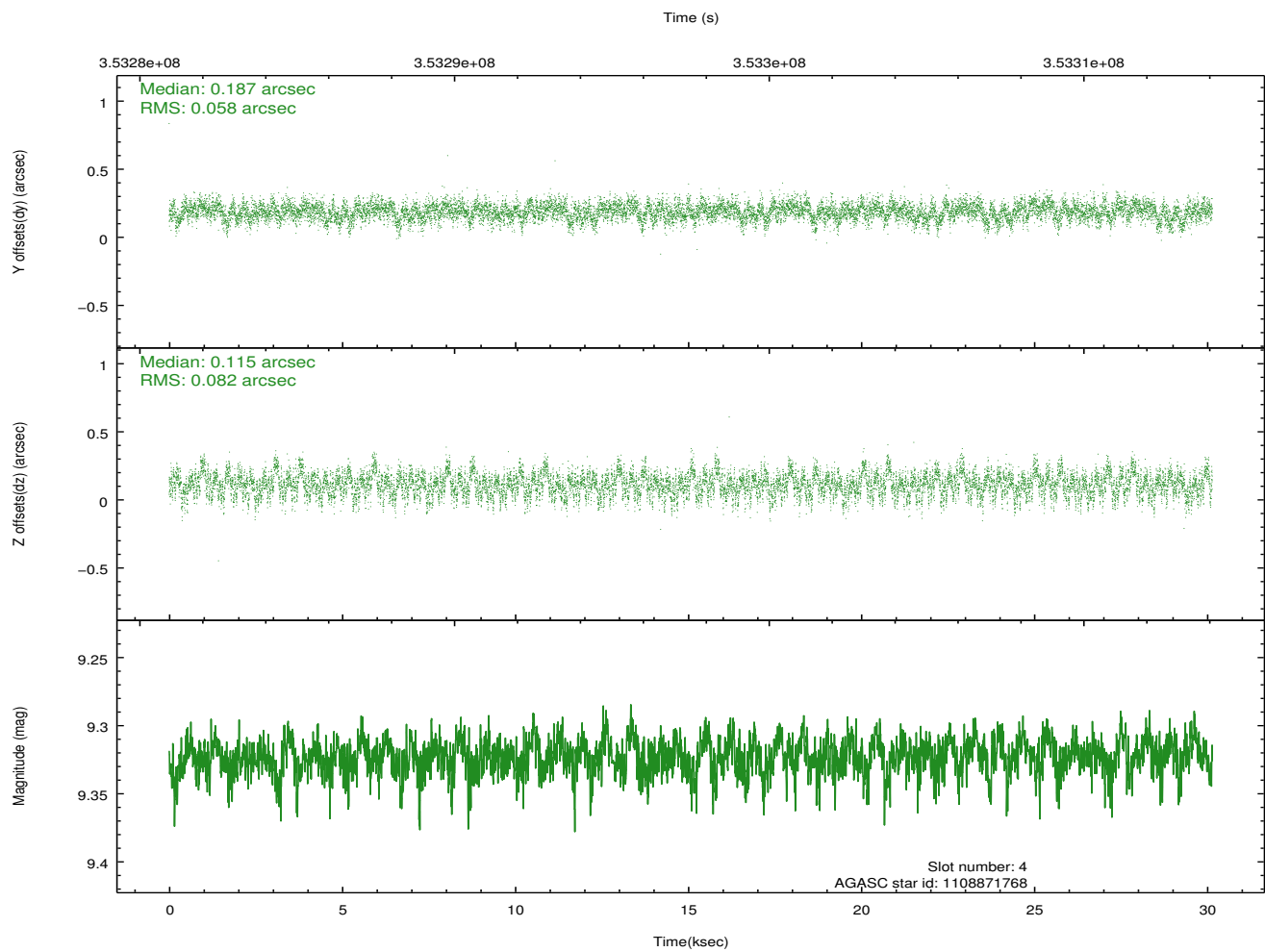
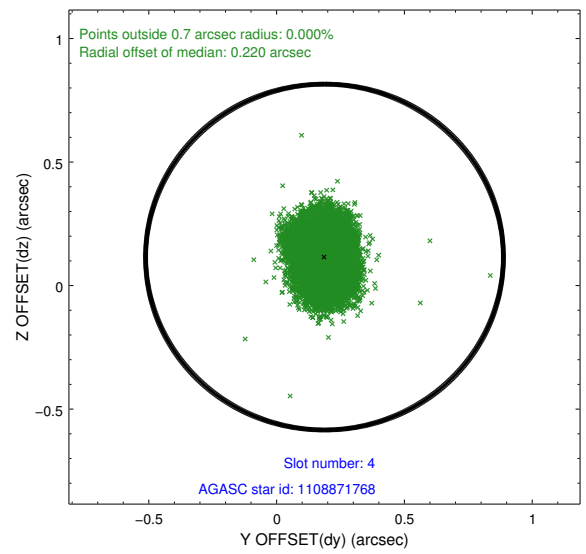
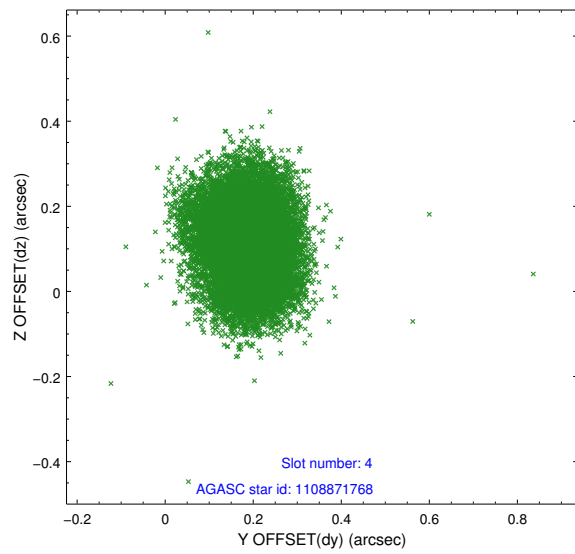
∞

2.4 Star Slots

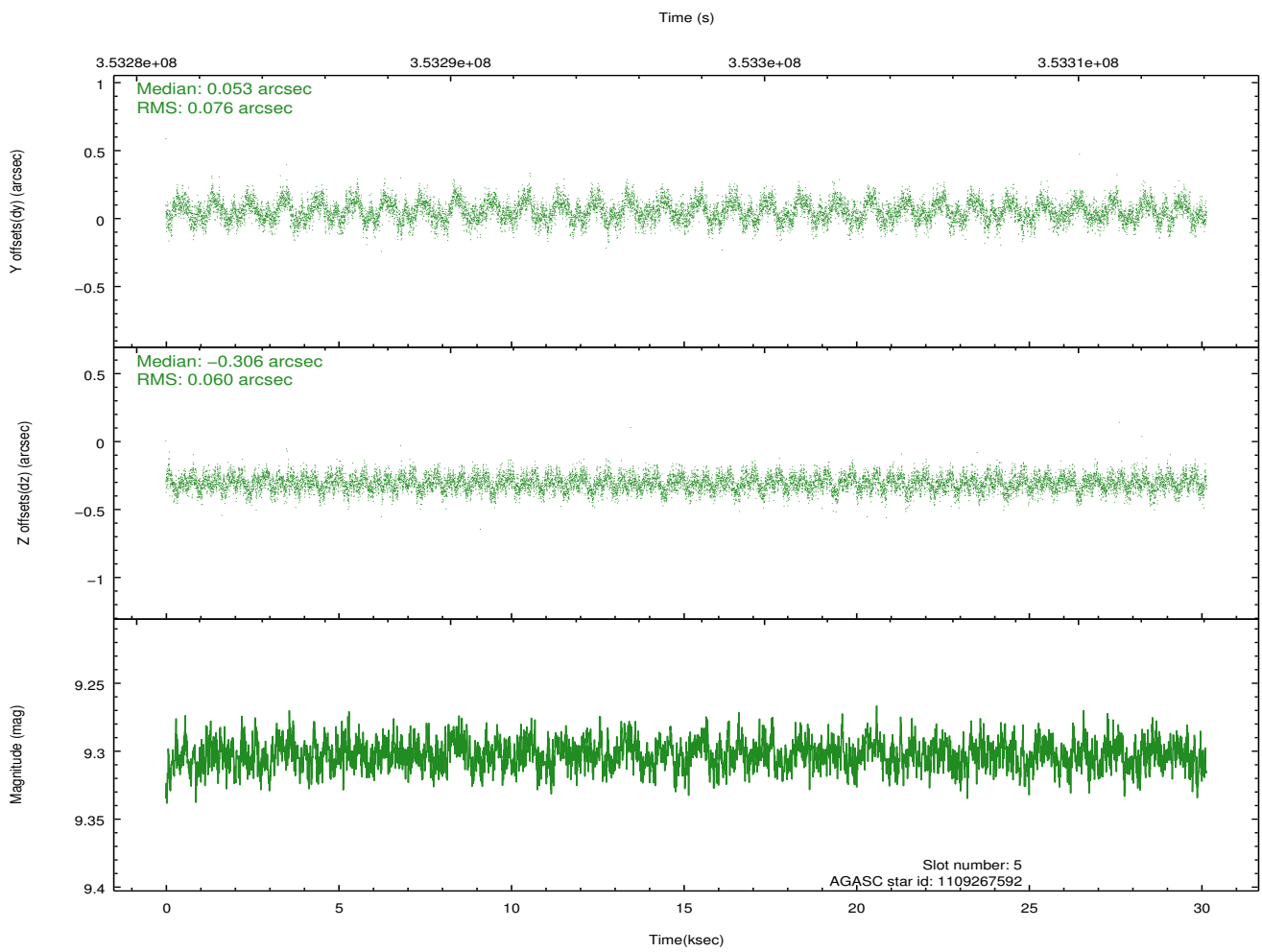
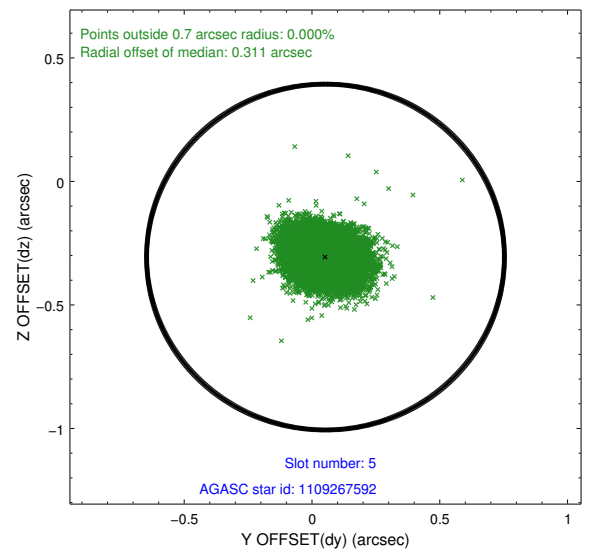
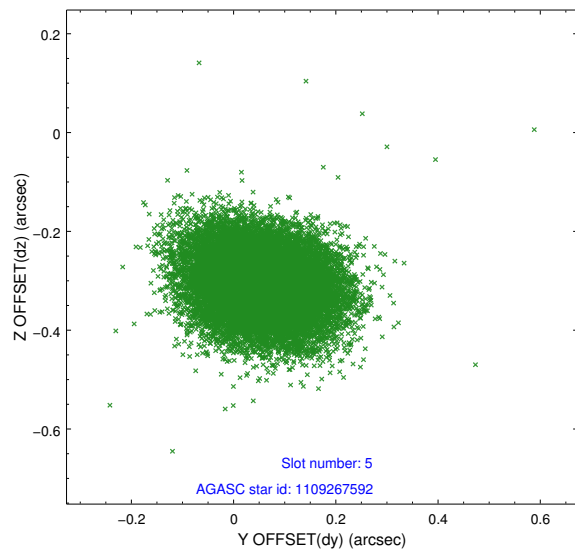
2.4.1 Slot 3



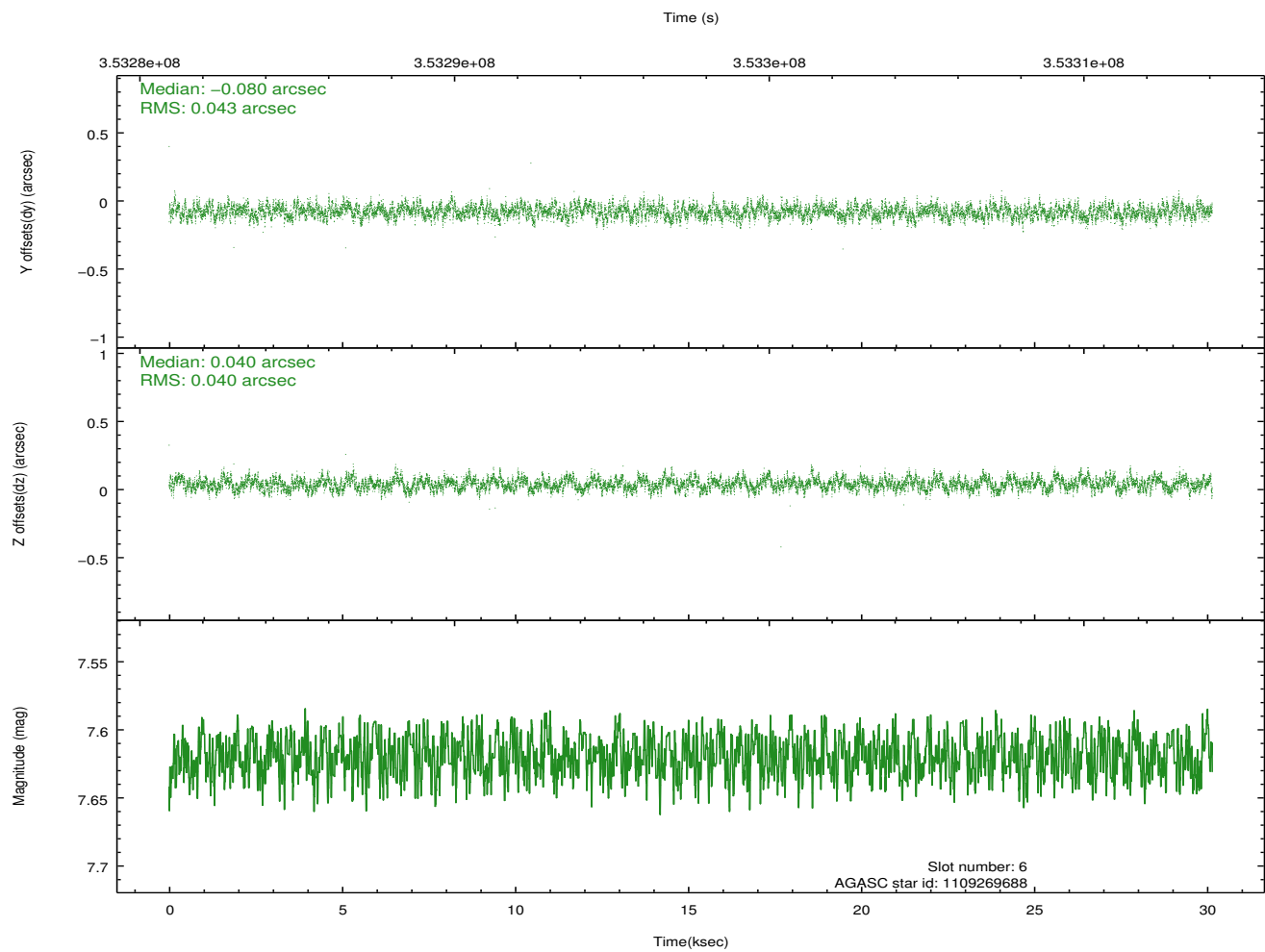
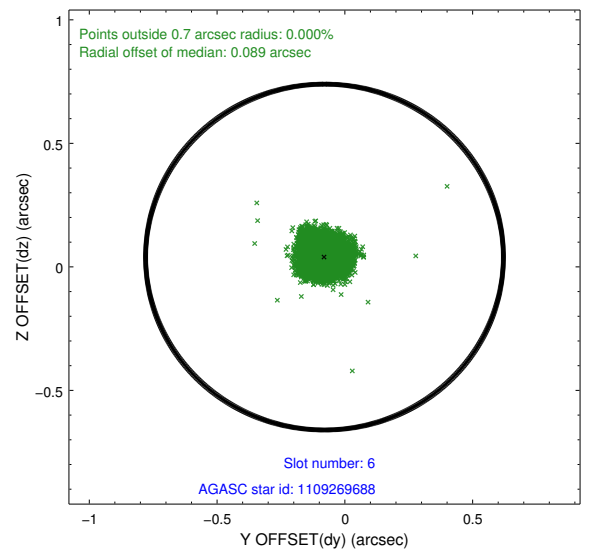
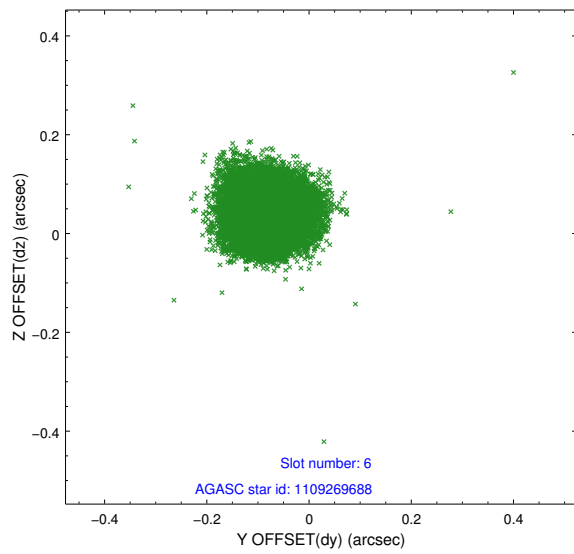
2.4.2 Slot 4



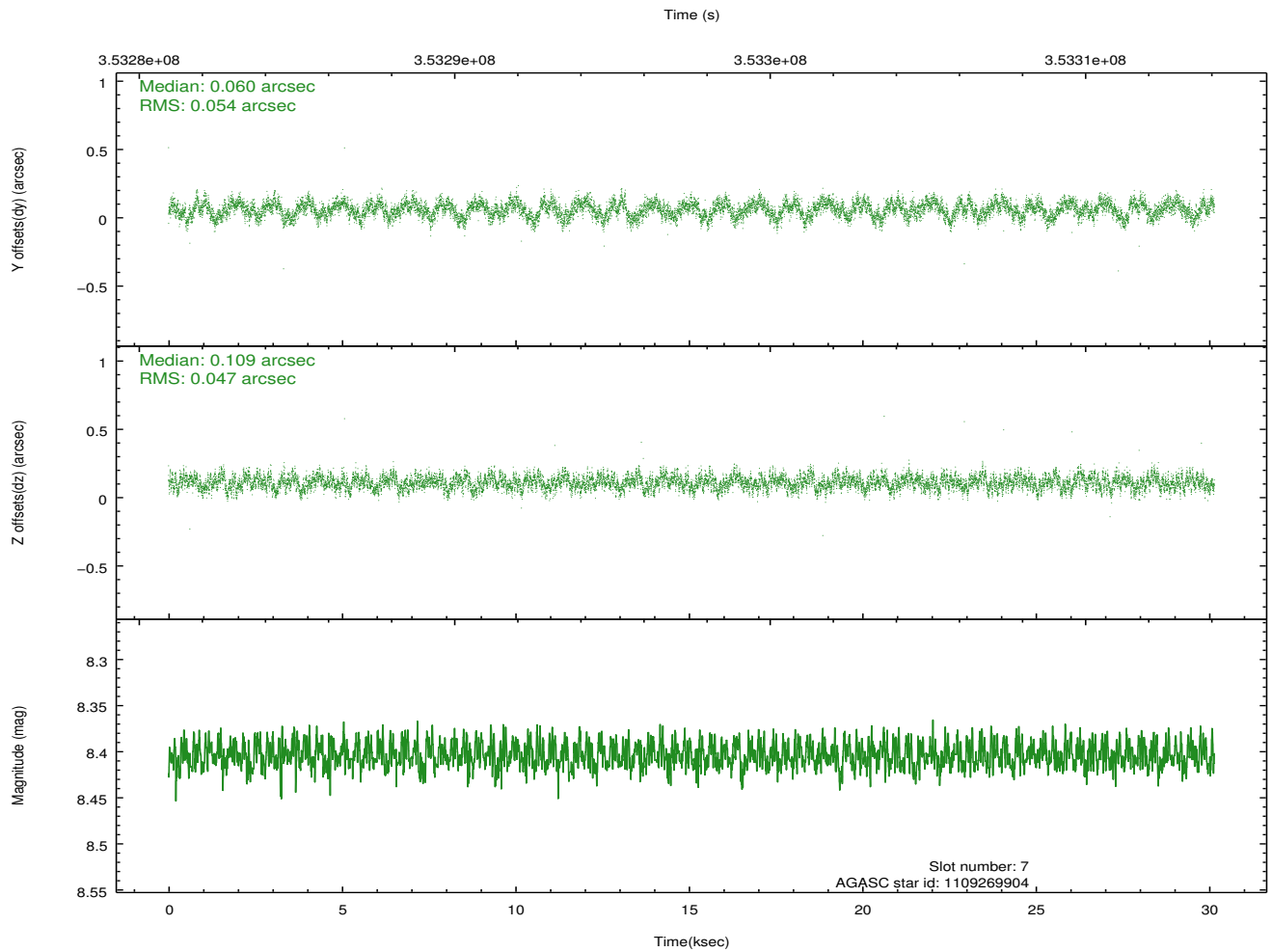
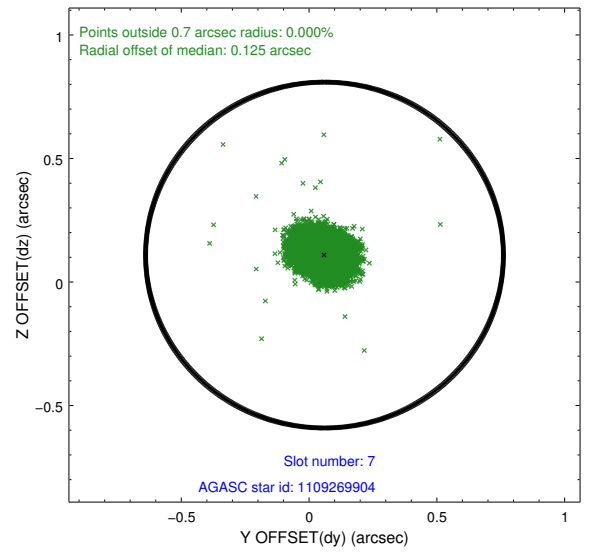
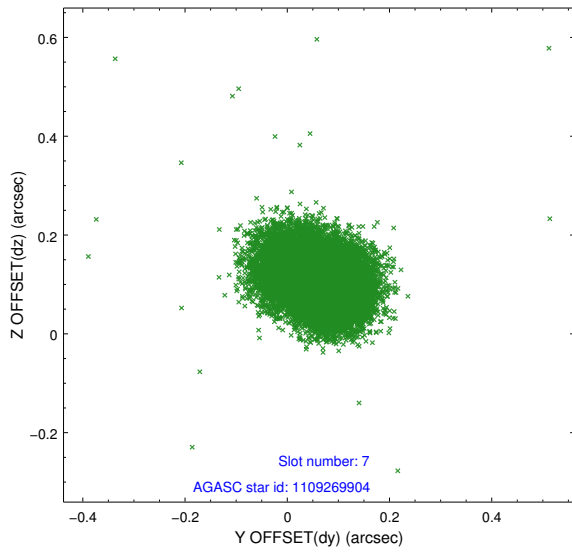
2.4.3 Slot 5



2.4.4 Slot 6

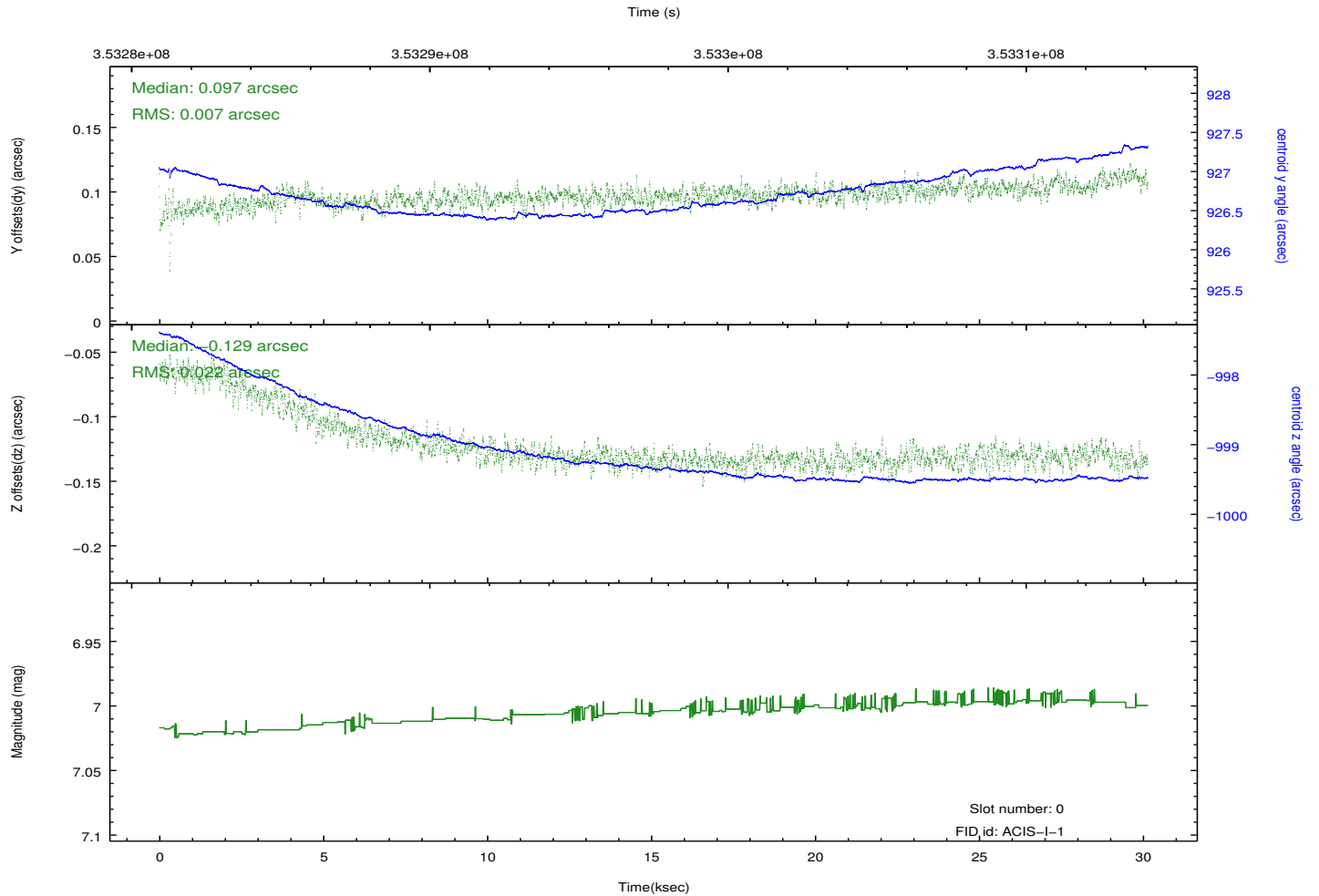
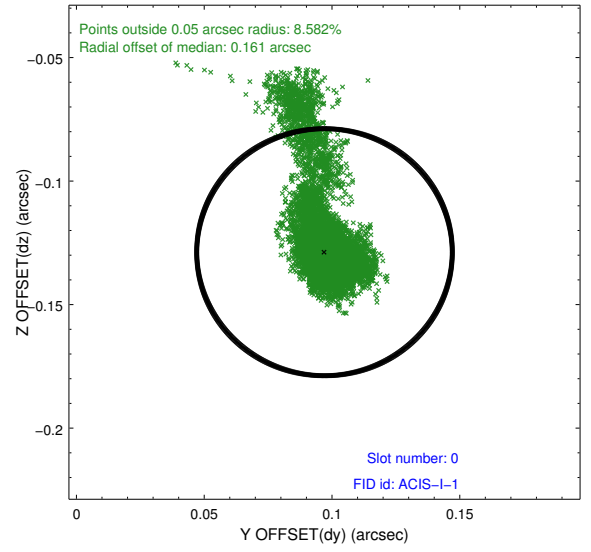
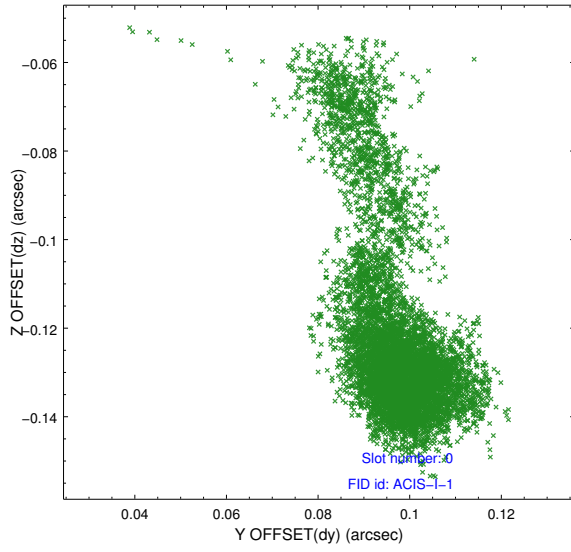


2.4.5 Slot 7

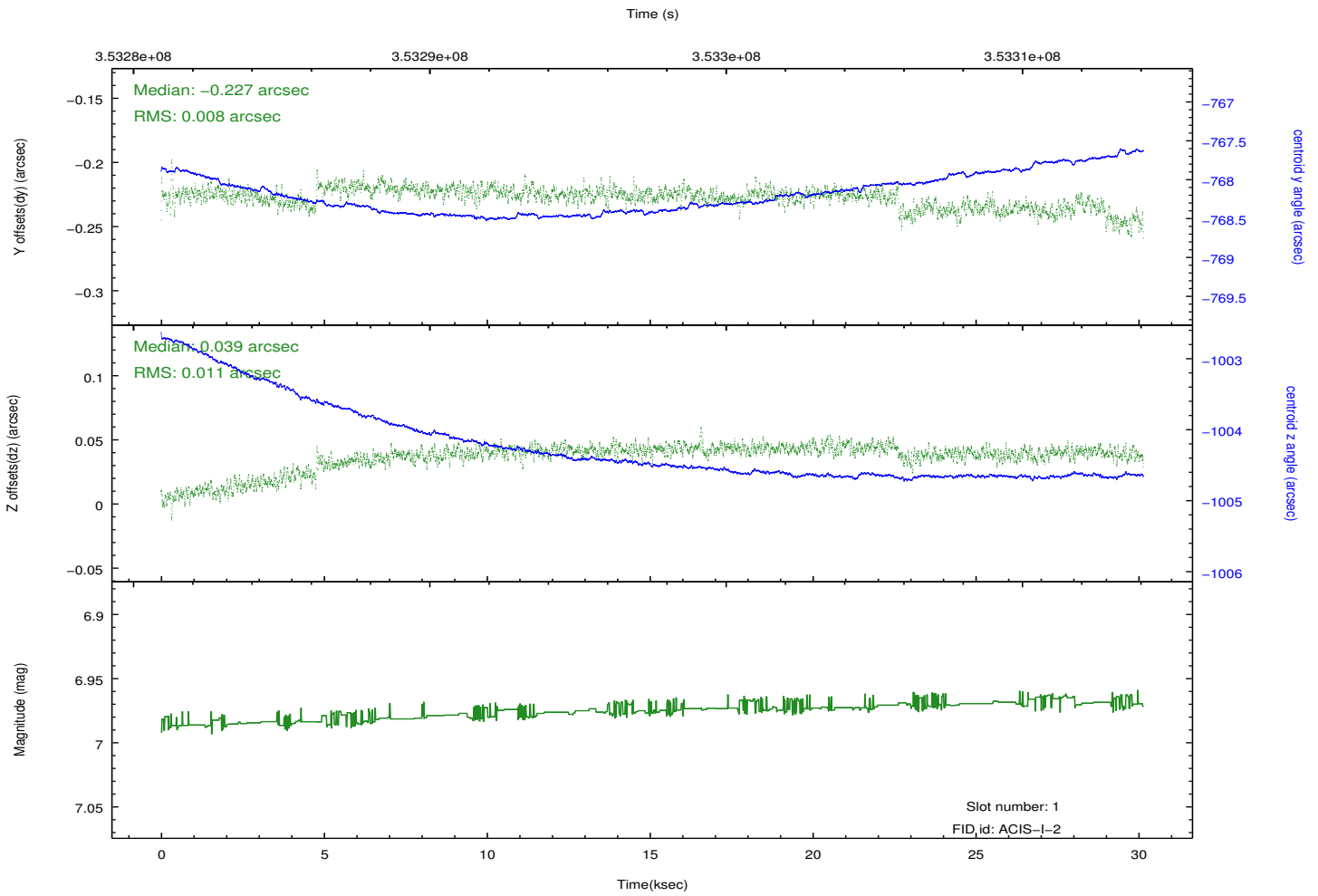
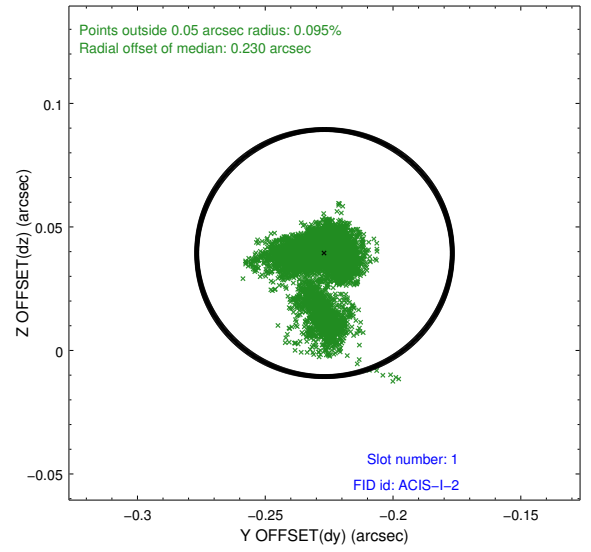
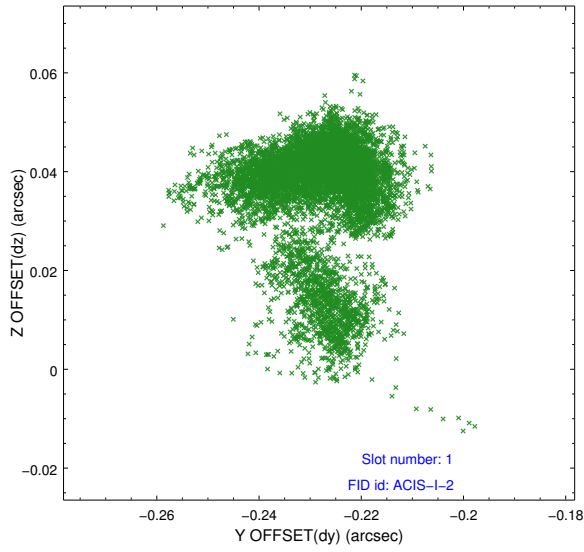


2.5 FID Slots

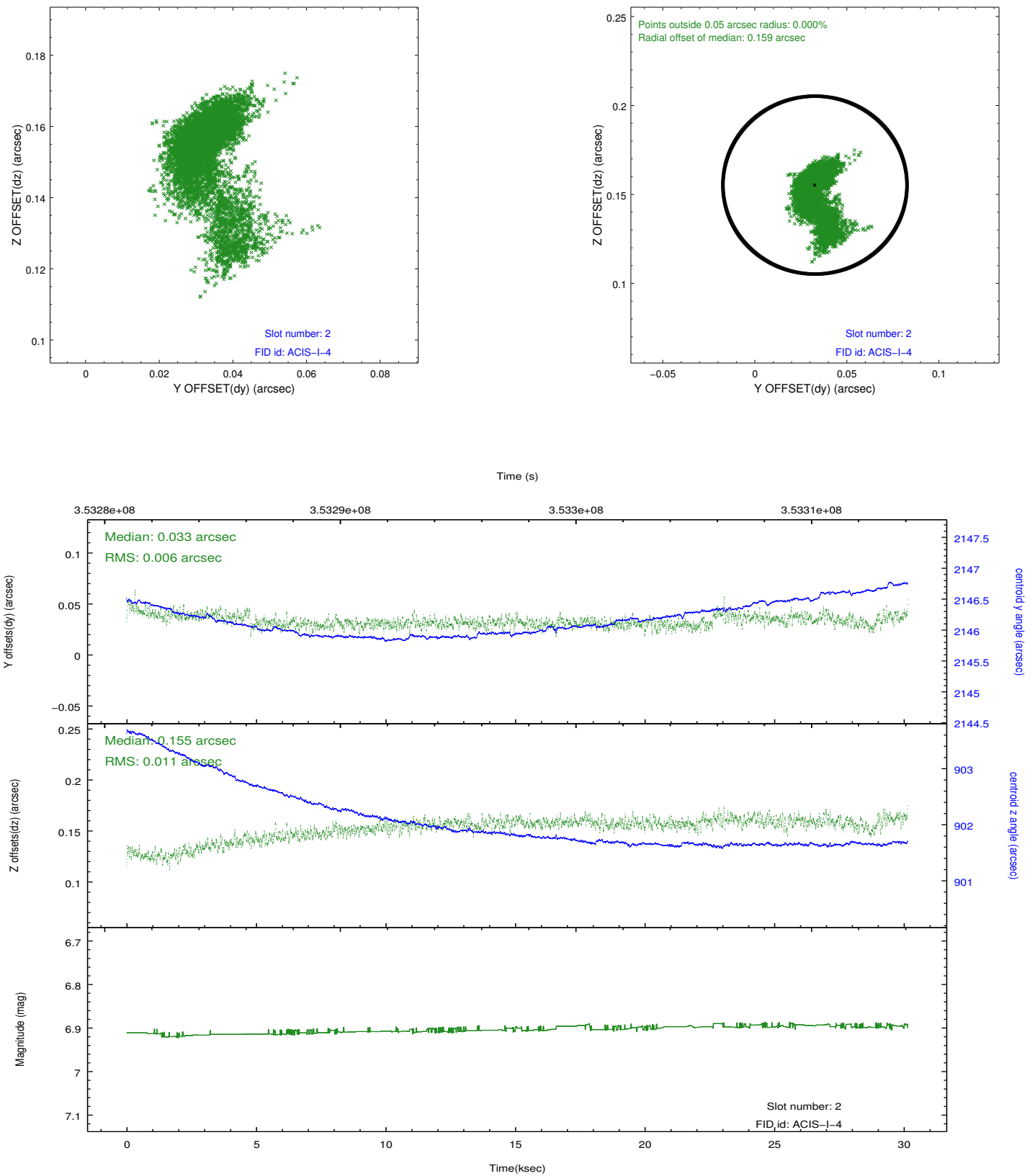
2.5.1 Slot 0



2.5.2 Slot 1



2.5.3 Slot 2



A Summary

A.1 Status

V&V Scientist	Beth Sundheim
V&V Date (YYYY-MM-DD)	2012.06.07
V&V Edition	1
V&V Disposition and Status	OK
V&V Charge Time	30.1444002

A.2 Comments