

V&V Reference Report

L2 ASCDS Version : 8.4.4

Observation 9374 - L2 Version 2
Chandra X-Ray Center

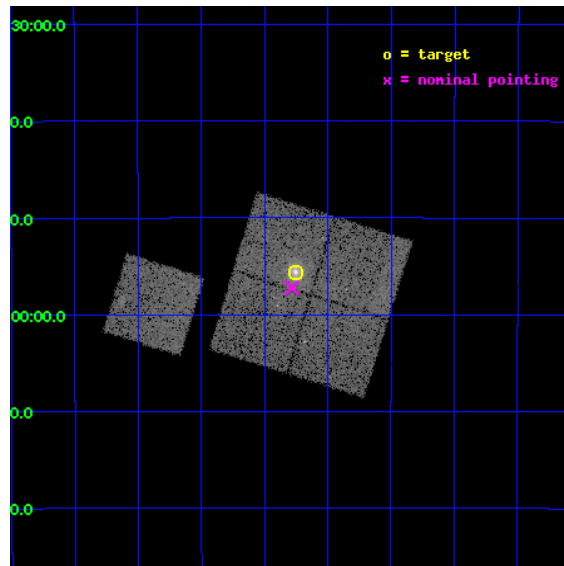
L2 Processing Date : May 5 2012

Contents

1	Front	2
2	OBI	3
2.1	OBI	3
2.1.1	Images	3
2.1.2	Bias	3
2.1.3	Parameters	4
2.1.4	Events	4
2.2	Compared Parameters	5
2.3	Aspect	6
2.4	Star Slots	9
2.4.1	Slot 3	9
2.4.2	Slot 4	10
2.4.3	Slot 5	11
2.4.4	Slot 6	12
2.4.5	Slot 7	13
2.5	FID Slots	14
2.5.1	Slot 0	14
2.5.2	Slot 1	15
2.5.3	Slot 2	16
A	Summary	17
A.1	Status	17
A.2	Comments	17

1 Front

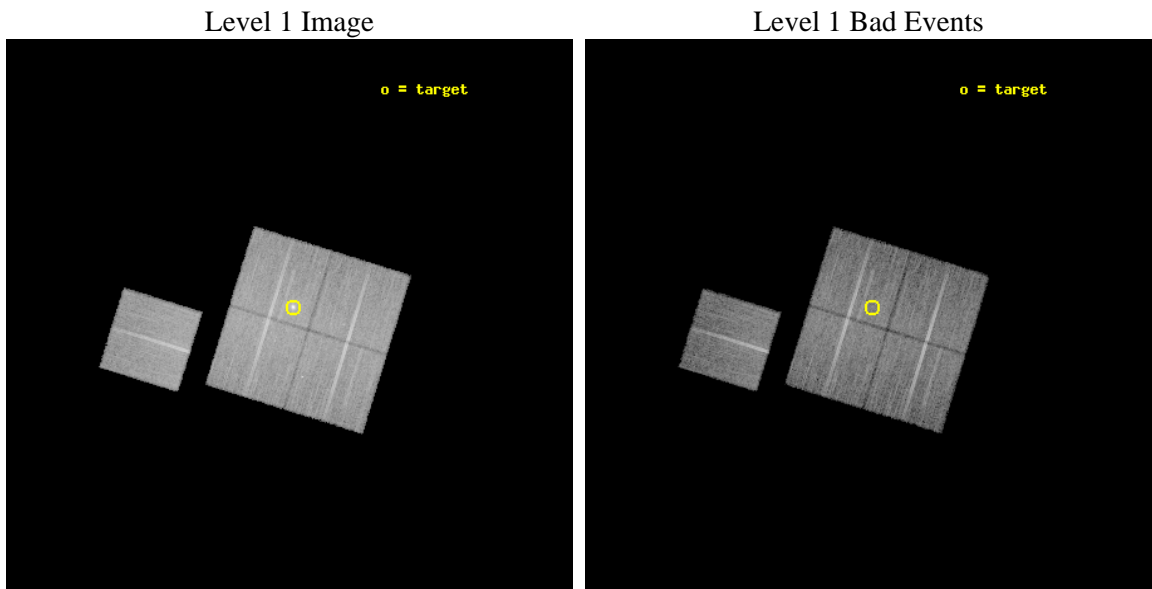
seq_num	800711	Sequence number
obs_id	9374	Observation id
title	Probing Dark Energy with Relaxed Galaxy Clusters	Proposal title
observer	Prof. Steven Allen	Principal investigator
object	MACS2229	Source name
dtycycle	0	
cycle	P	events from which exps? Prim/Second/Both
ra_targ	337.43875	Observer's specified target RA [deg]
dec_targ	-27.926917	Observer's specified target Dec [deg]
ra_nom	337.44601230882	Nominal RA [deg]
dec_nom	-27.953910284354	Nominal Dec [deg]
roll_nom	287.23727493925	Nominal Roll [deg]
revision	2	Processing version of data
ontime	15016.318165064	Sum of GTIs [s]
livetime	14820.118913385	Livetime [s]
ontime0	15019.459155142	Sum of GTIs [s]
ontime1	15022.600115538	Sum of GTIs [s]
ontime2	15016.318194807	Sum of GTIs [s]
ontime3	15016.318165064	Sum of GTIs [s]
ontime6	15019.45912528	Sum of GTIs [s]
l2events	59265	Number of level 2 events



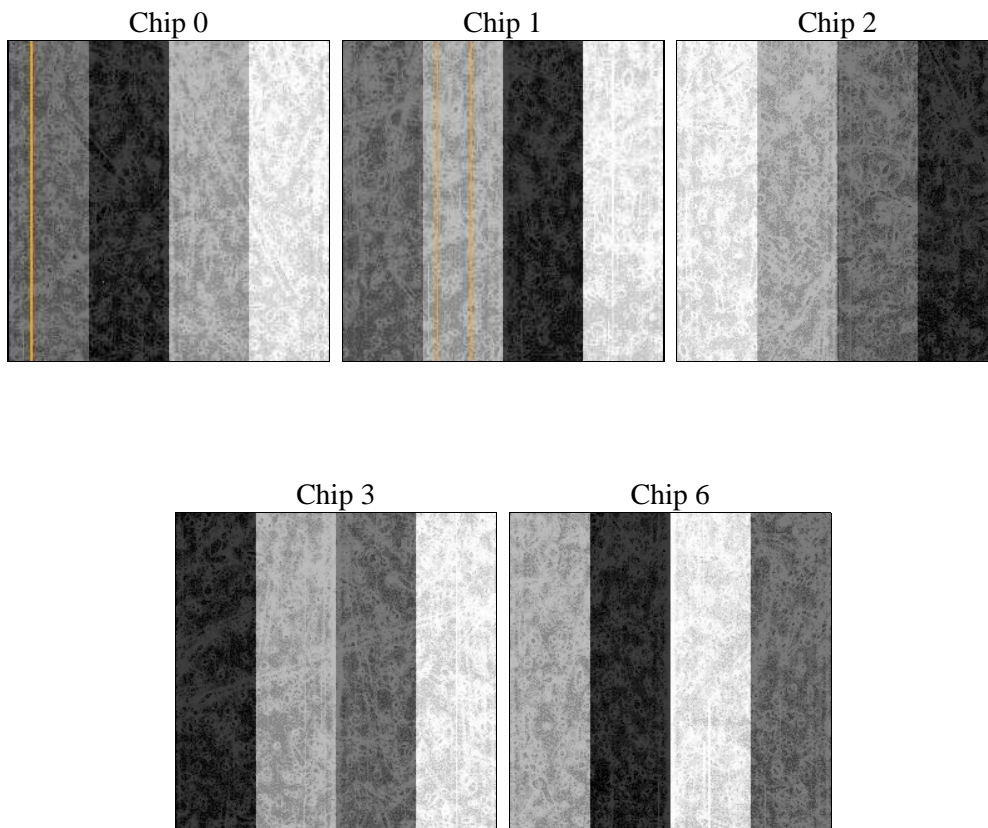
2 OBI

2.1 OBI

2.1.1 Images



2.1.2 Bias



2.1.3 Parameters

obi_num	0	Obi number	sched_exp_time	15000.000000	[s] Scheduled observation exposure time
ascdsver	8.4.4	Processing system revision	ontime	15016.318165064	Sum of GTIs [s]
caldbver	4.4.9	 	ontime0	15019.459155142	Sum of GTIs [s]
date	2012-05-05T22:12:34	Date and time of file creation	ontime1	15022.600115538	Sum of GTIs [s]
revision	2	Processing version of data	ontime2	15016.318194807	Sum of GTIs [s]
			ontime3	15016.318165064	Sum of GTIs [s]
			ontime6	15019.45912528	Sum of GTIs [s]
			l1events	623865	Number of level 1 events

2.1.4 Events

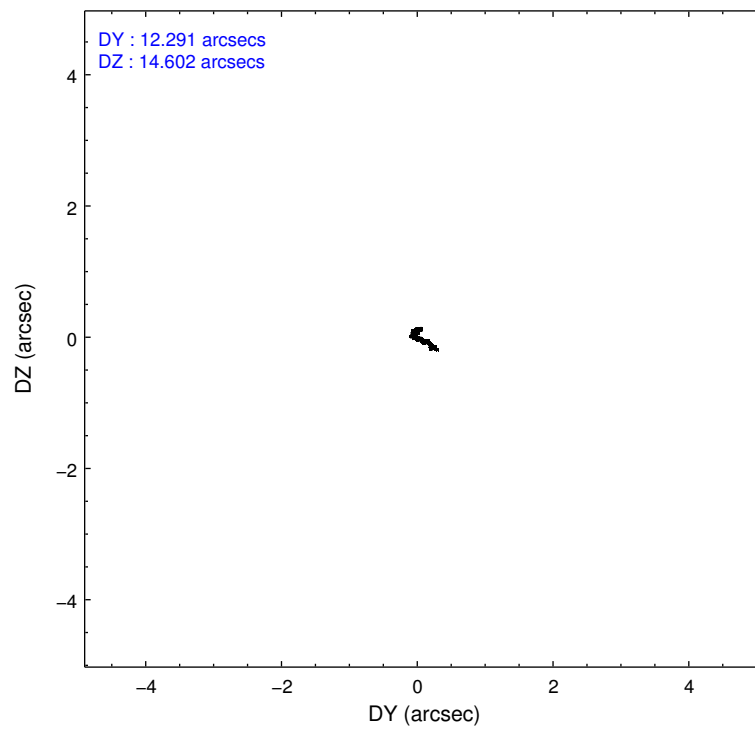
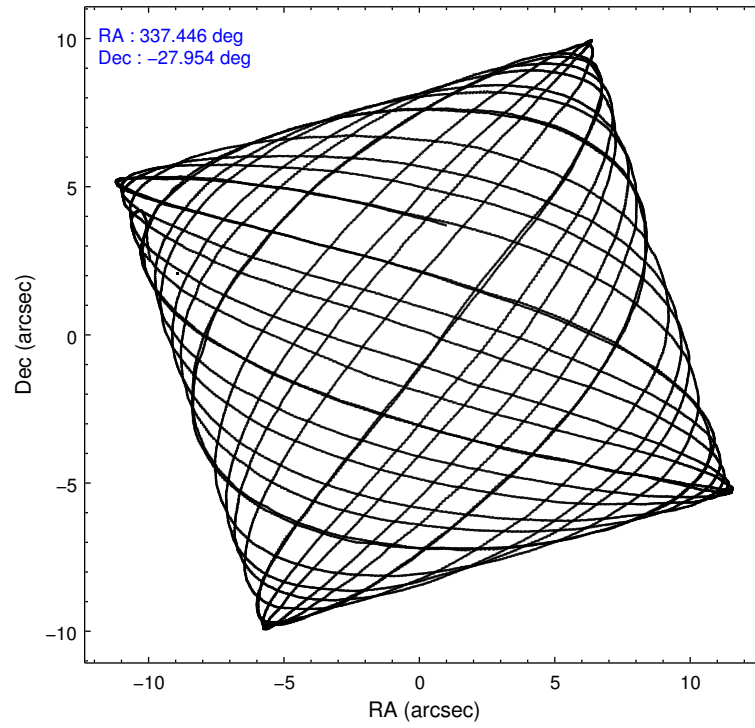
	ccd 0	ccd 1	ccd 2	ccd 3	ccd 6
level 1 events	118920	118248	132452	131627	122618
rejected events	106127	104331	119964	113264	109767
rejected %	89%	88%	90%	86%	89%

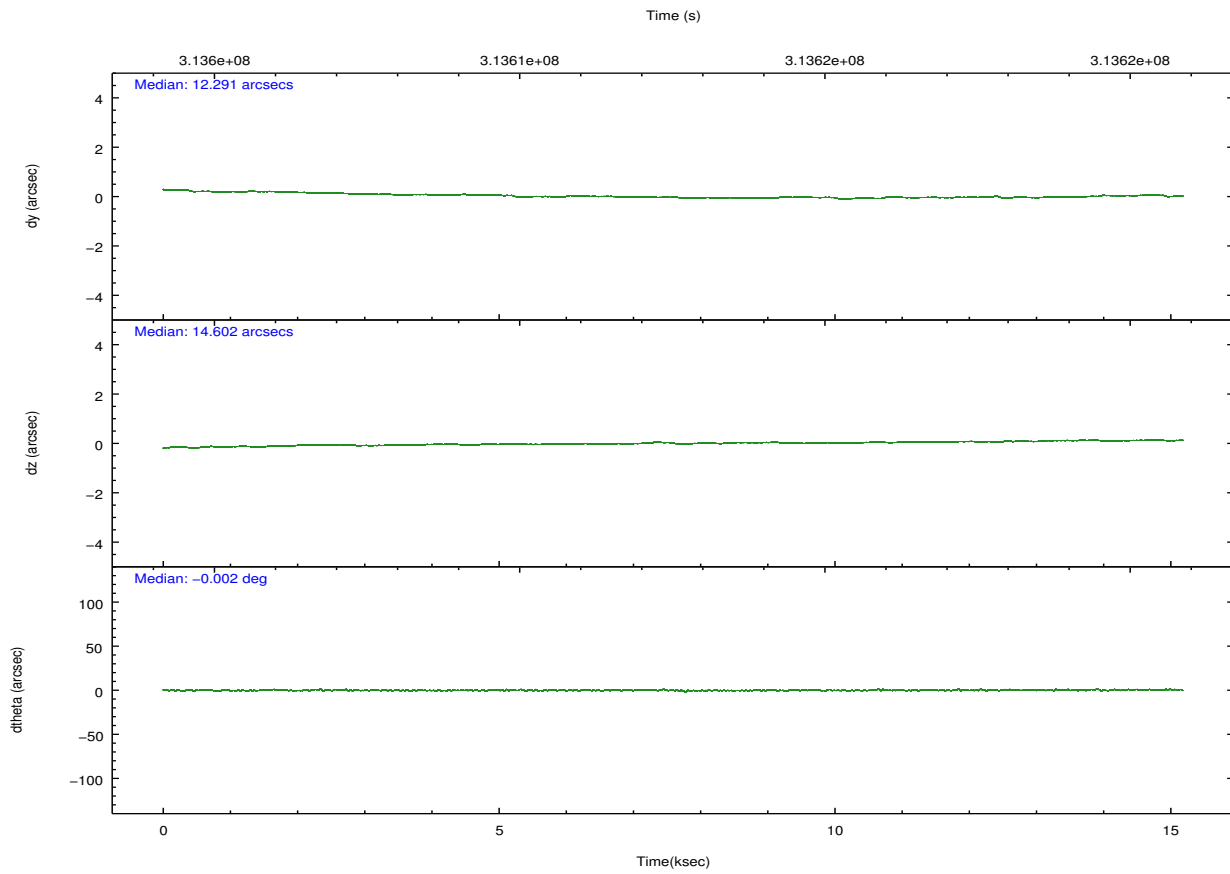
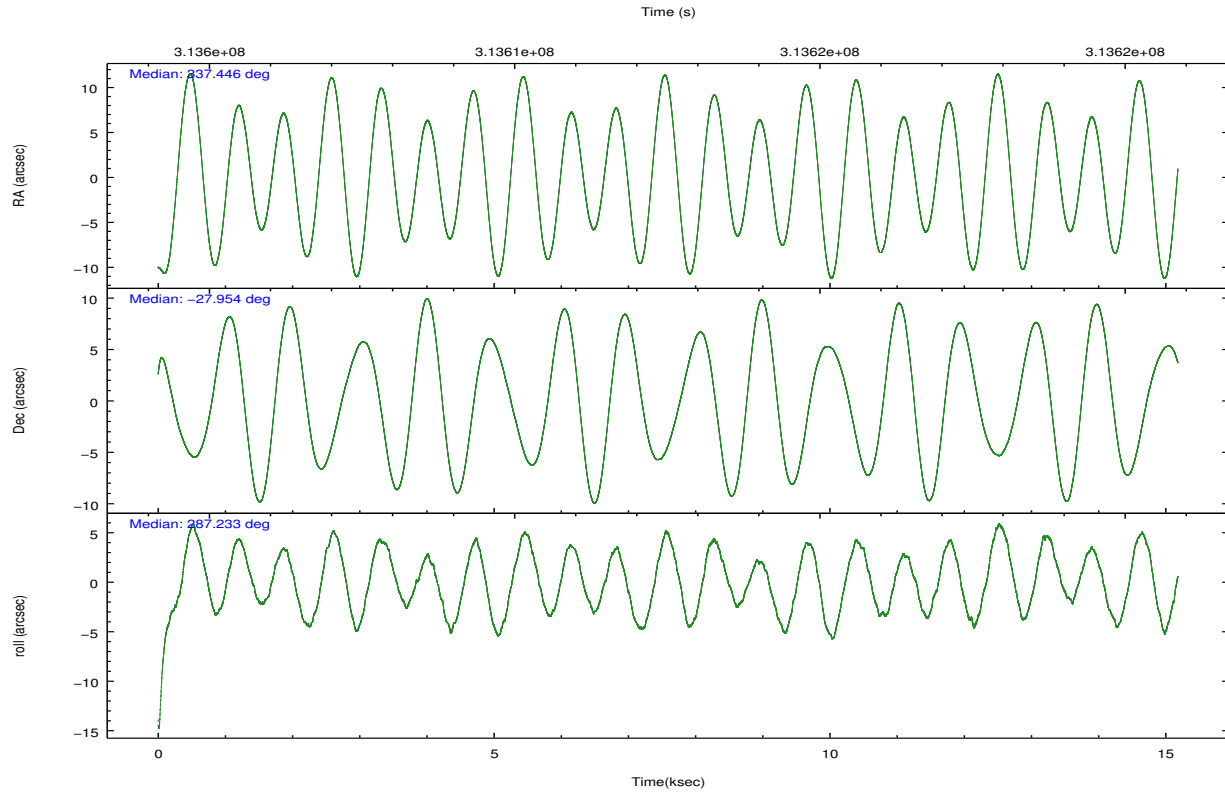
	ccd 0	ccd 1	ccd 2	ccd 3	ccd 6
grade 0 events	4571	4862	4563	9725	4559
	3%	4%	3%	7%	3%
grade 1 events	54	65	71	113	49
	0%	0%	0%	0%	0%
grade 2 events	3152	3268	2985	3184	2774
	2%	2%	2%	2%	2%
grade 3 events	1403	1506	1366	1481	1388
	1%	1%	1%	1%	1%
grade 4 events	1324	1461	1335	1496	1360
	1%	1%	1%	1%	1%
grade 5 events	4307	4779	4222	5096	4966
	3%	4%	3%	3%	4%
grade 6 events	2351	2827	2242	2489	2776
	1%	2%	1%	1%	2%
grade 7 events	101758	99480	115668	108043	104746
	85%	84%	87%	82%	85%

2.2 Compared Parameters

Parameter	Planned	Actual	Parameter	Planned	Actual
Instrument	ACIS	ACIS	Obspar format version number	7	7
Detector	ACIS-01236	ACIS-01236	Obspar file type	PREDICTED	ACTUAL
Grating	NONE	NONE	Obspar update status	NONE	UPDATED
Data mode	VFAINT	VFAINT	CCD I0 on	Y	Y
Observation mode	POINTING	POINTING	CCD I1 on	Y	Y
[deg] Pointing RA	337.423114	337.4460123088181	CCD I2 on	Y	Y
[deg] Pointing Dec	-27.935323	-27.95391028435386	CCD I3 on	Y	Y
[deg] Pointing Roll	287.017861	287.2372749392489	CCD S0 on	N	N
[mm] SIM focus pos	-0.782348	-0.7809083437167272	CCD S1 on	N	N
[mm] SIM defocus	0	0.001439871863259334	CCD S2 on	O1	Y
[mm] SIM translation stage pos	-229.442463	-229.4438428438578	CCD S3 on	N	N
[mm] SIM translation stage offset	-4.15	-4.148610159071865	CCD S4 on	N	N
[s] Observation start time (MET)	313605108.184000	313604187.69709	CCD S5 on	N	N
Observation start date	2007-12-09T16:30:43	2007-12-09T16:16:27	Number of optional ACIS chips dropped	0	0
[s] Observation end time (MET)	313620108.184000	313620984.8854	On-chip summing requested	N	N
Observation end date	2007-12-09T20:40:43	2007-12-09T20:56:24	Subarray requested	NONE	NONE
Read mode	TIMED	TIMED	Alternating exposures requested	N	N
			[s] Primary exposure time	0.000000	3.1

2.3 Aspect



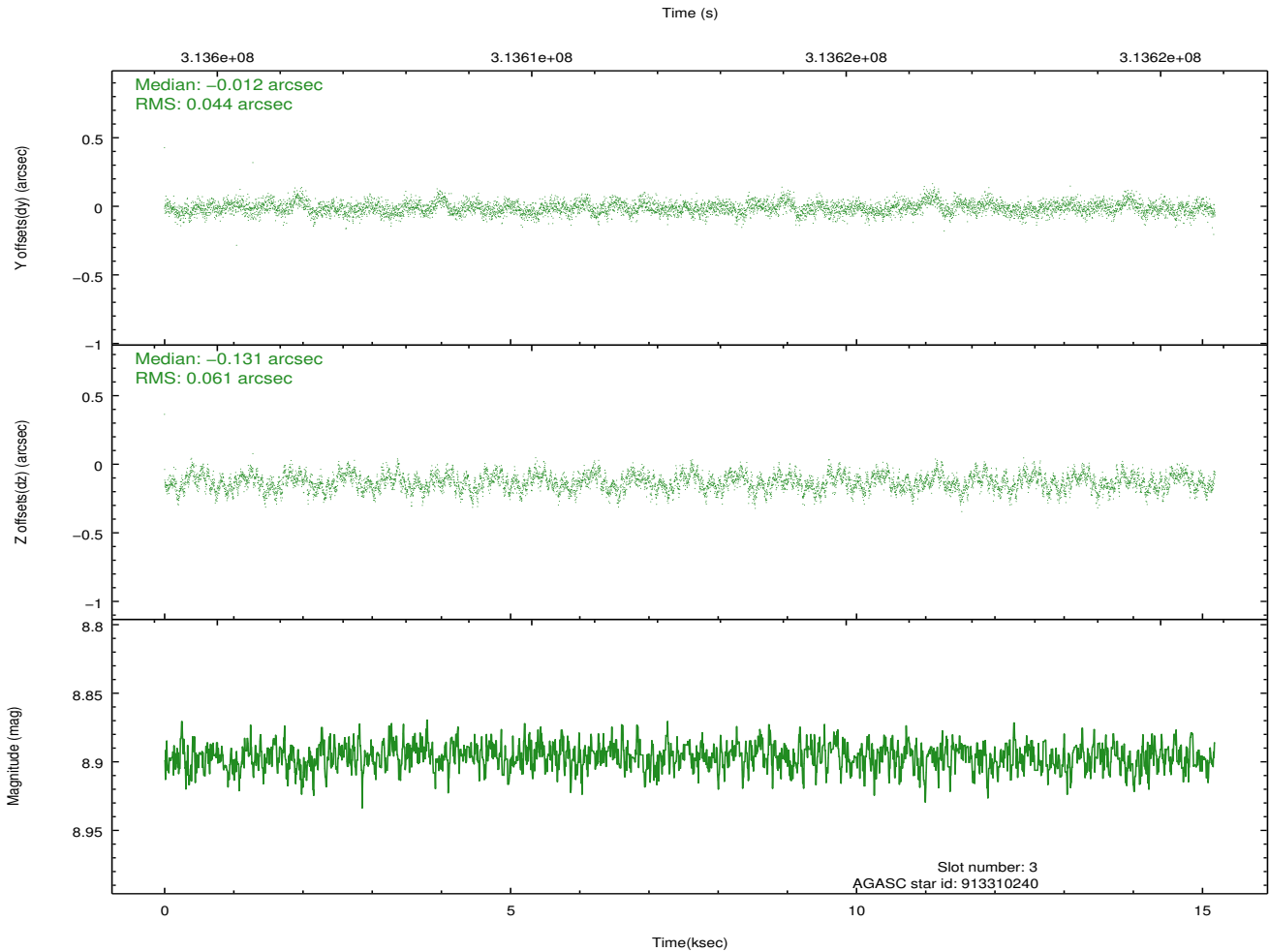
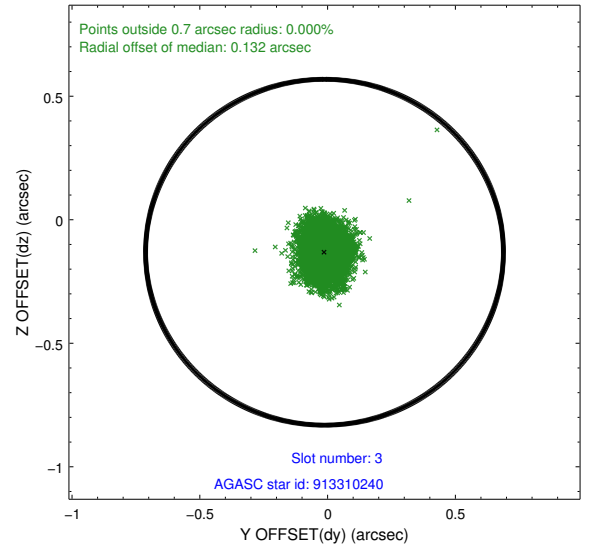
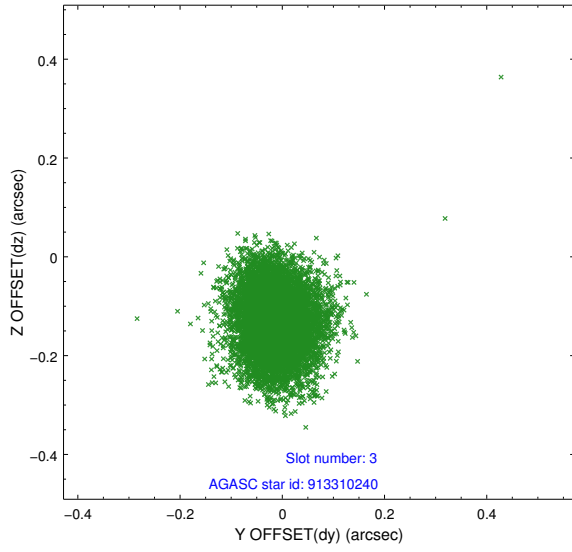


Slot Statistics

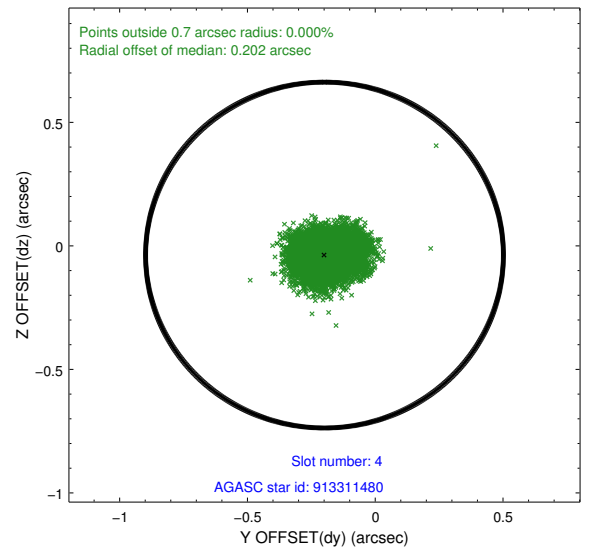
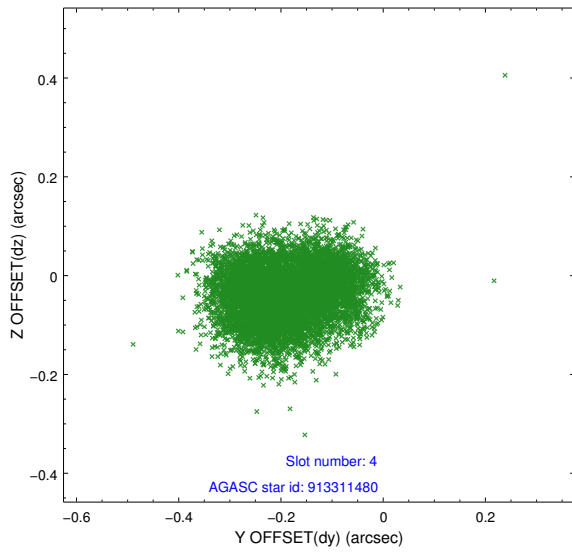
slot	status	id	mag	n_pts	med_dy	med_dz	dr1	dr2	ra	dec	mean_y	mean_z
0	FID	ACIS-I-1	7.21	3702	0.085	-0.042	0.008	0.014	0.000000	0.000000	927.21	-923.35
1	FID	ACIS-I-5	7.22	3702	-0.228	0.084	0.007	0.011	0.000000	0.000000	-1821.04	974.10
2	FID	ACIS-I-6	7.23	3702	0.052	0.029	0.008	0.013	0.000000	0.000000	392.41	1618.88
3	GUIDE	913310240	8.90	7401	-0.012	-0.131	0.080	0.131	337.471814	-27.840202	-281.45	248.47
4	GUIDE	913311480	9.06	7396	-0.199	-0.037	0.099	0.155	337.398081	-27.586667	-1223.33	291.07
5	GUIDE	913313160	9.19	7398	0.149	0.156	0.106	0.173	336.843776	-28.032525	-199.48	-1863.49
6	GUIDE	913443128	9.62	7332	0.138	0.103	0.115	0.184	337.991992	-28.132119	1210.93	1518.78
7	GUIDE	913314008	7.07	7406	-0.077	-0.094	0.062	0.102	337.357724	-28.659564	2433.43	-960.01

2.4 Star Slots

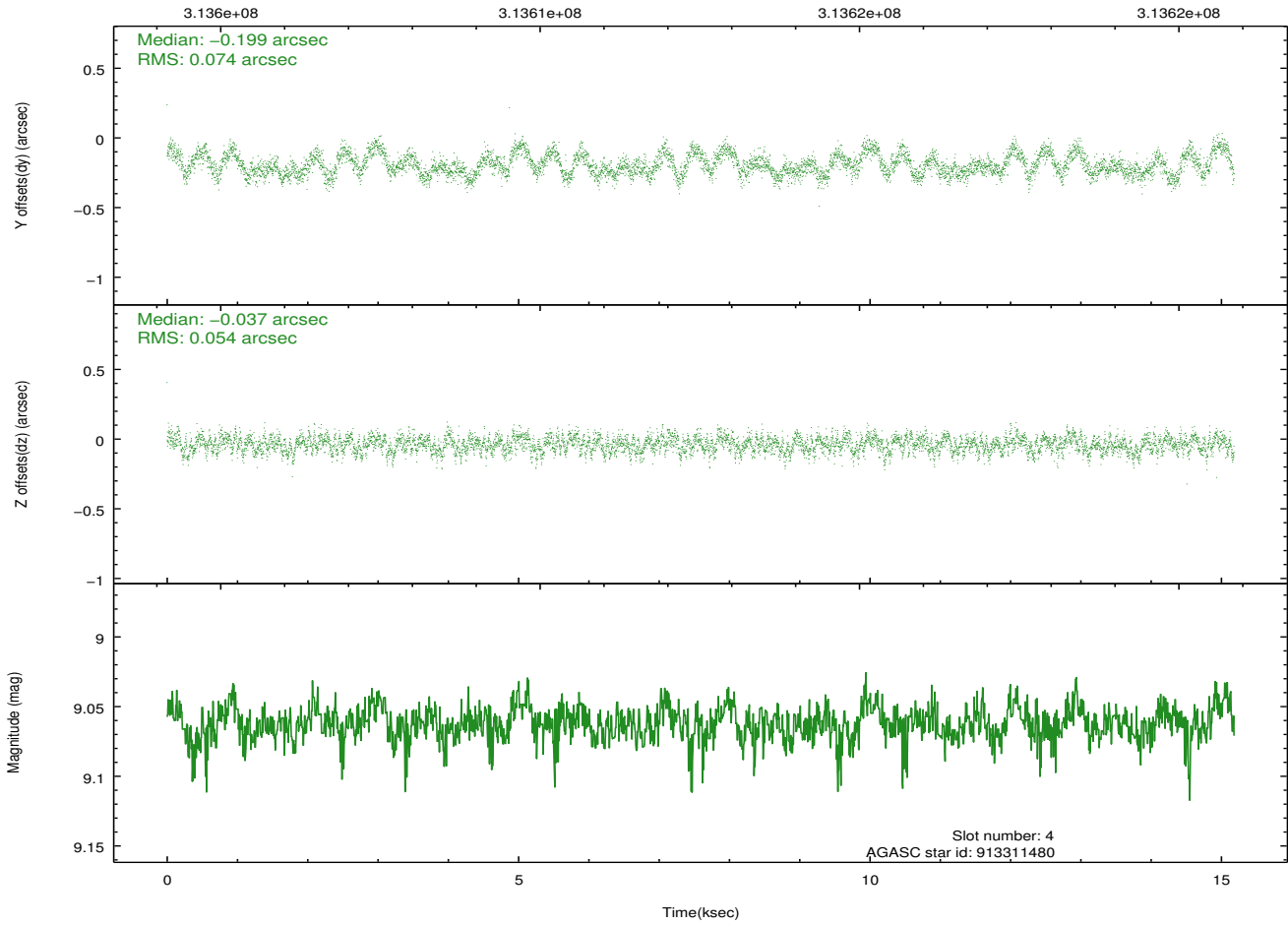
2.4.1 Slot 3



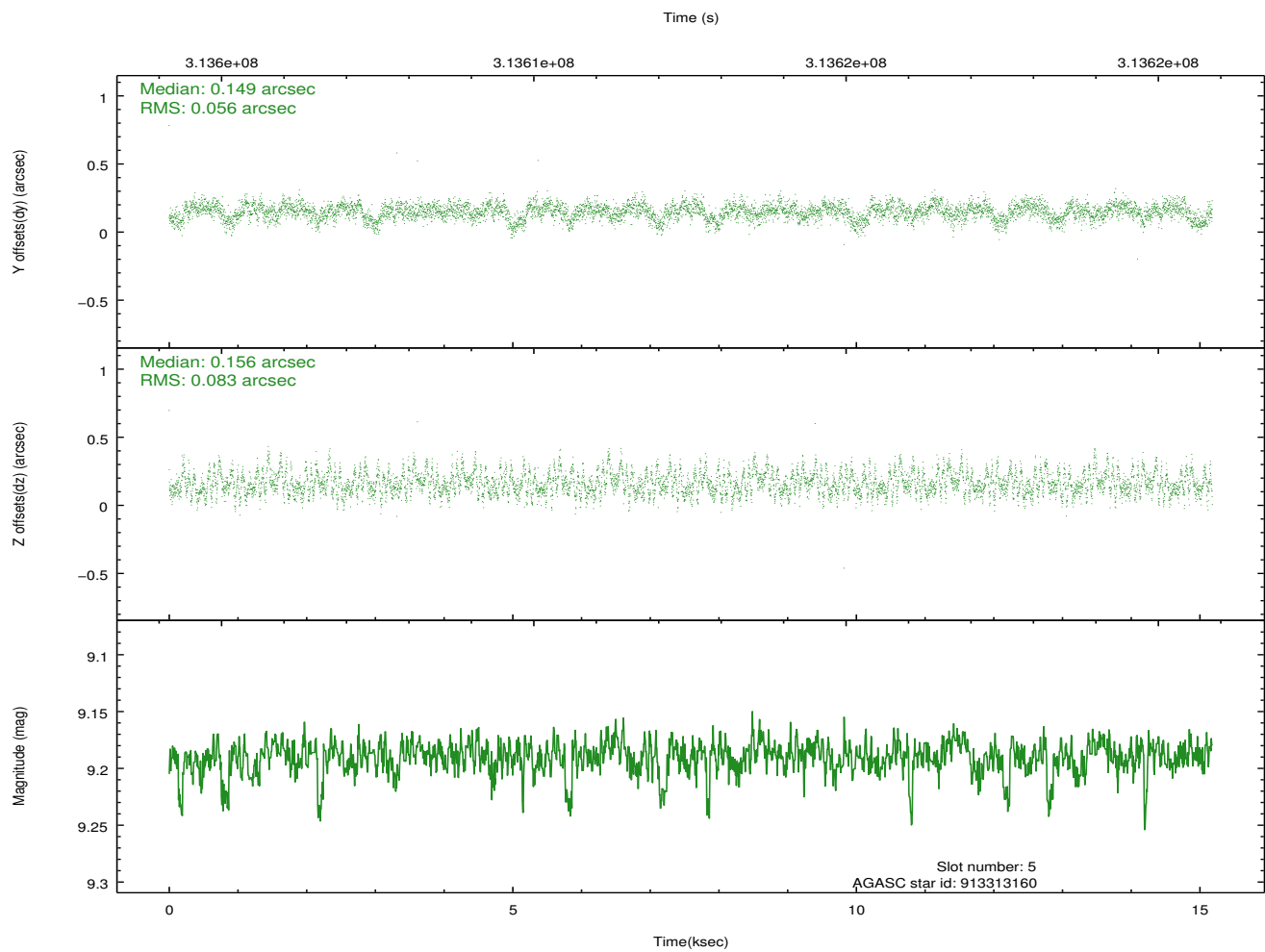
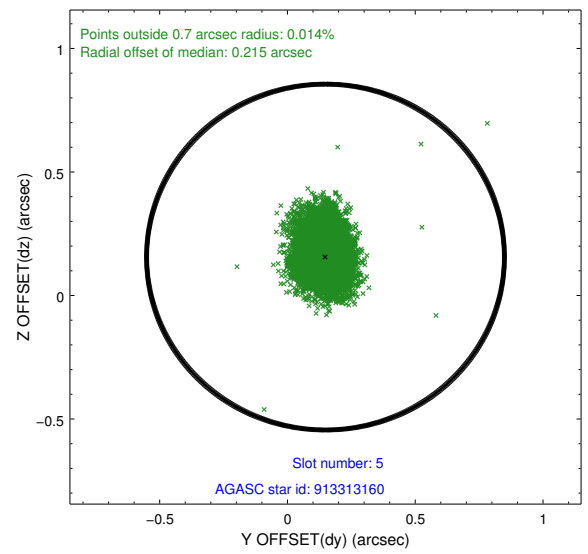
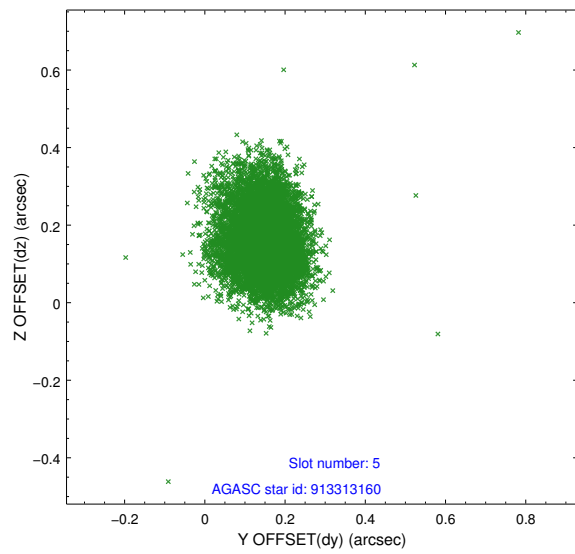
2.4.2 Slot 4



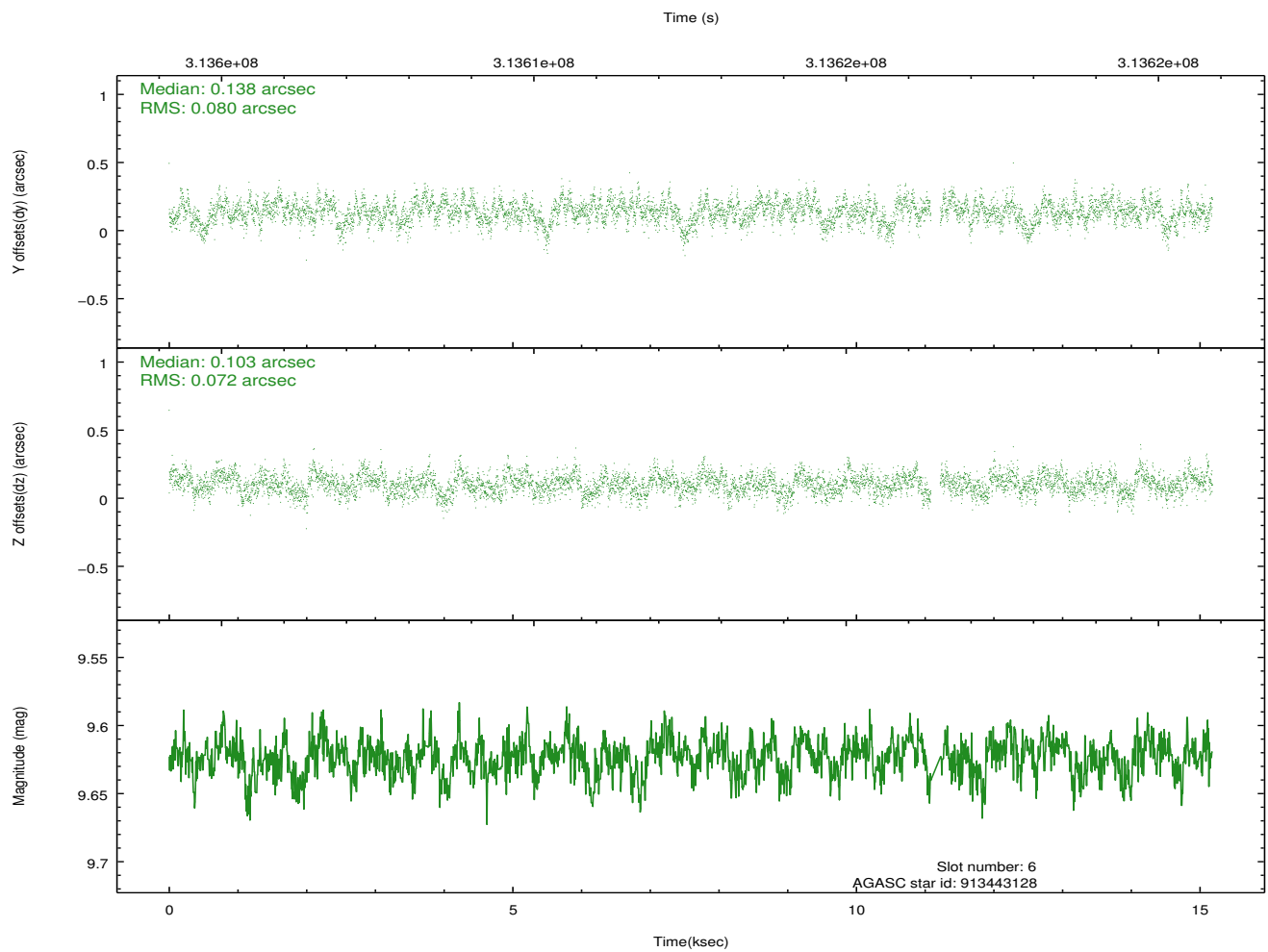
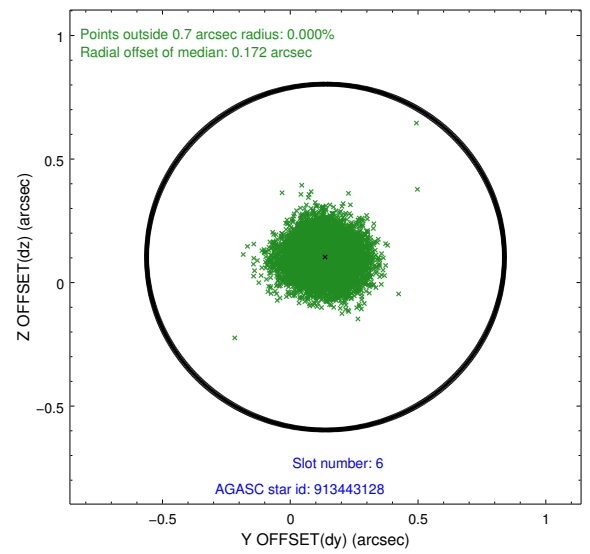
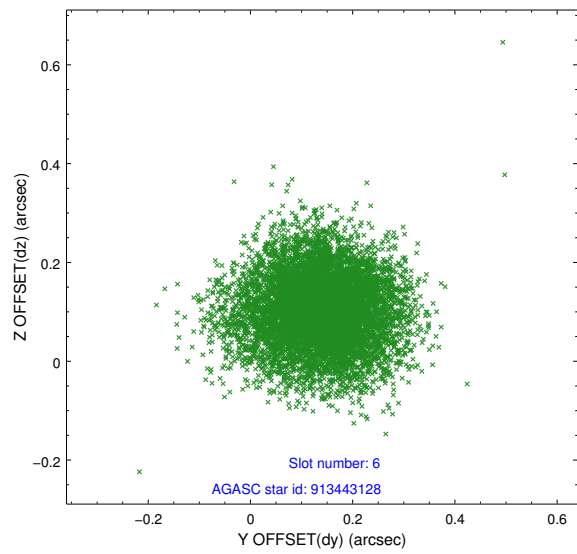
Time (s)



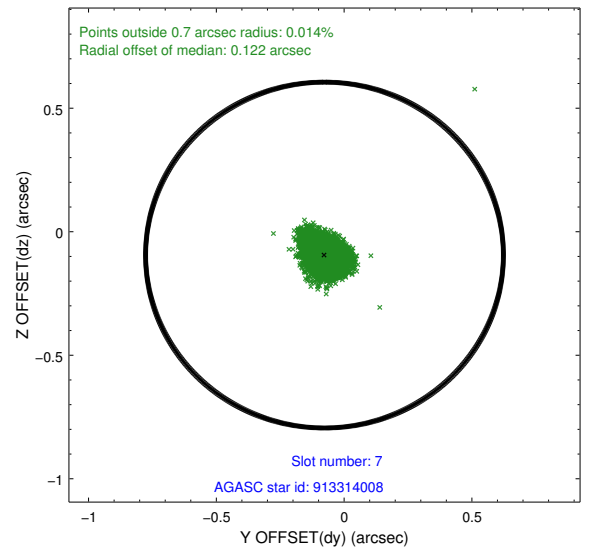
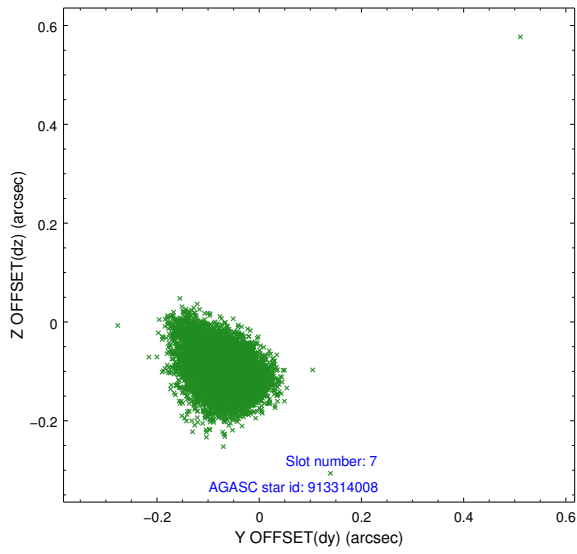
2.4.3 Slot 5



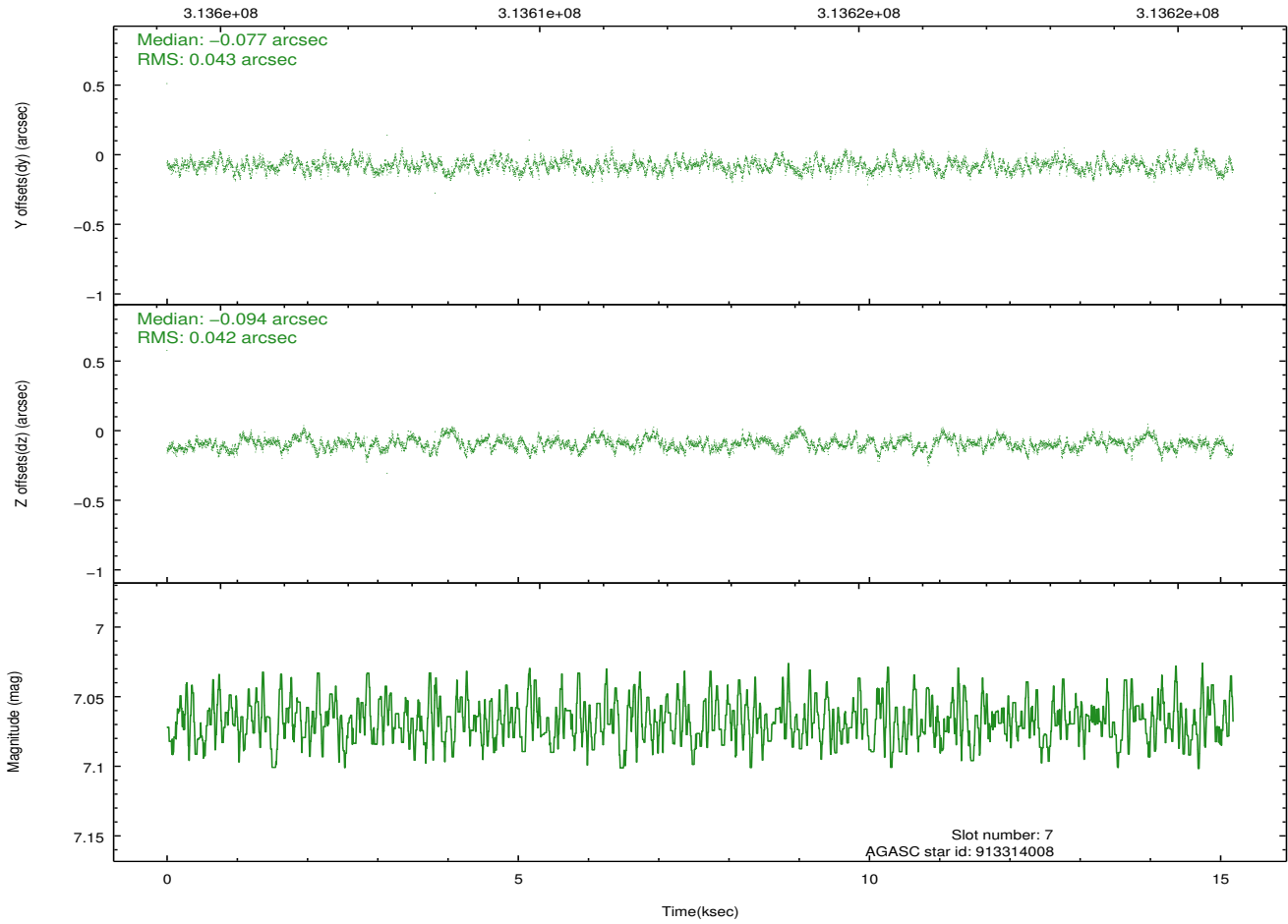
2.4.4 Slot 6



2.4.5 Slot 7

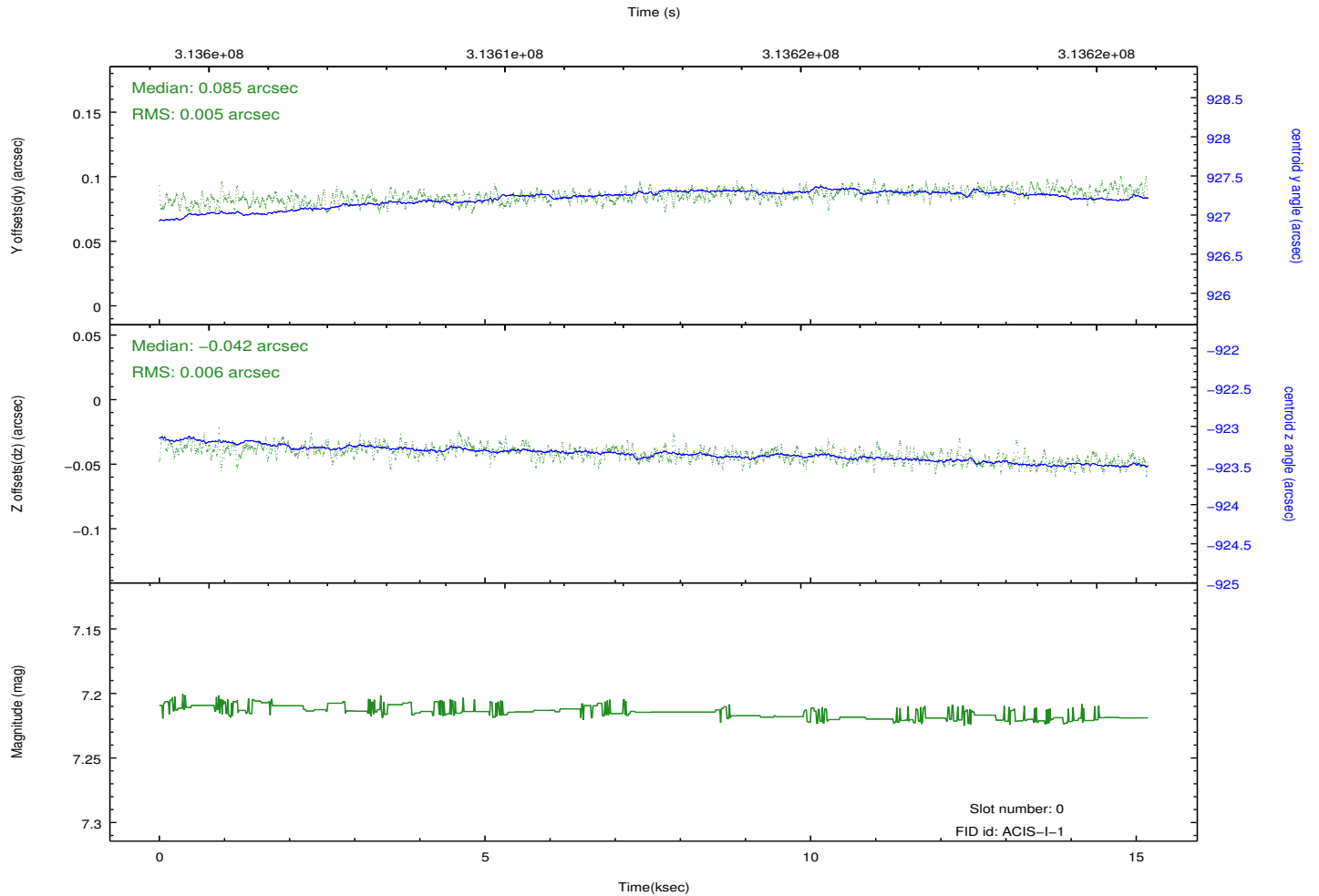
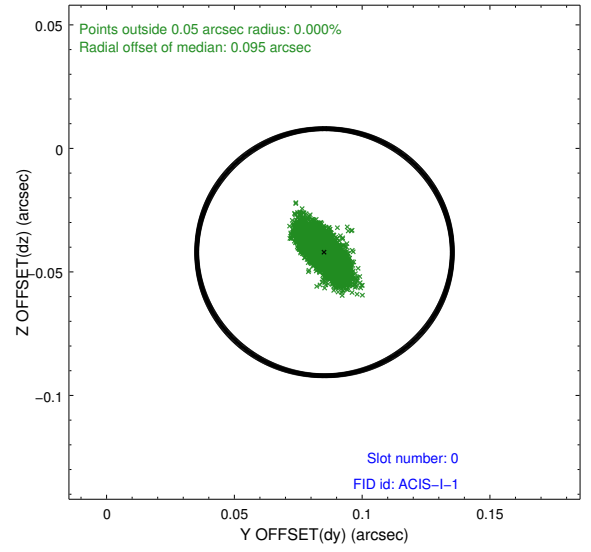
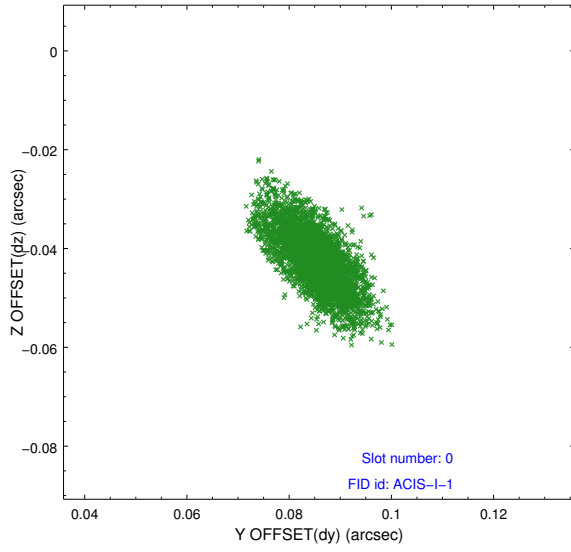


Time (s)

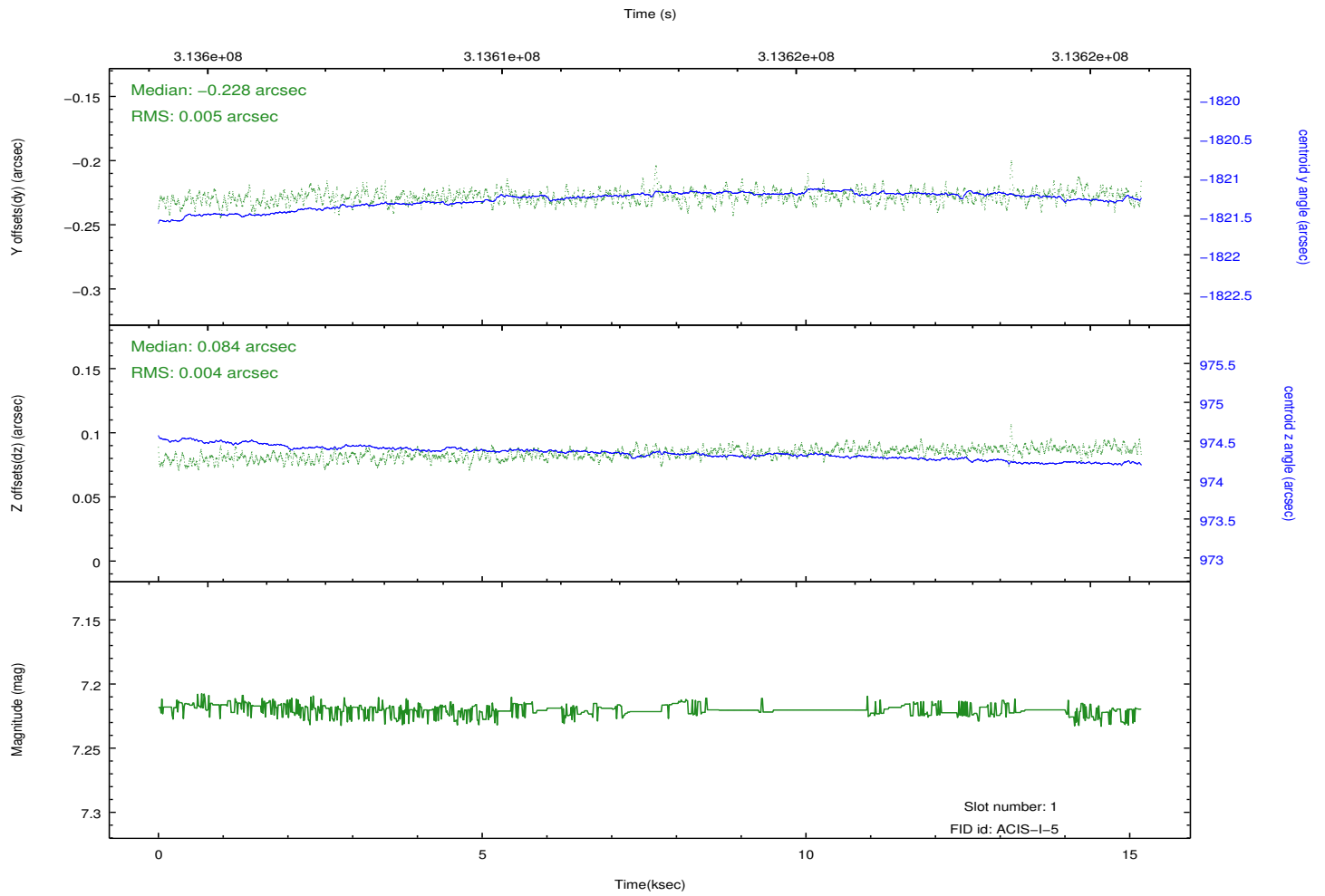
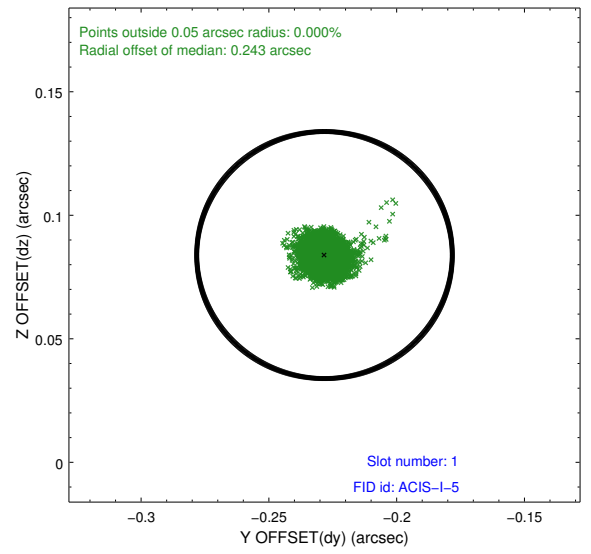
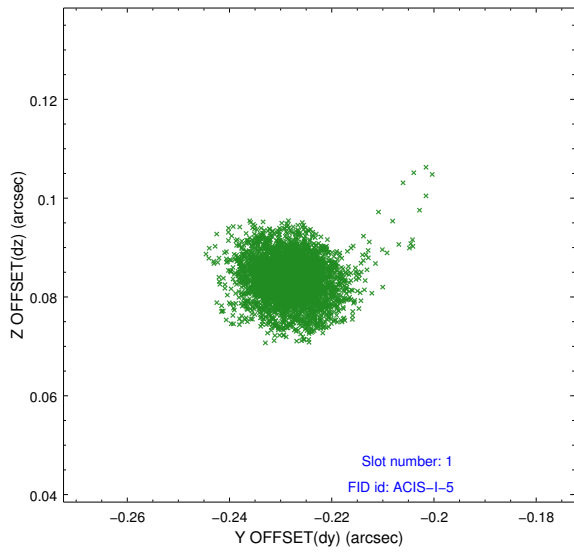


2.5 FID Slots

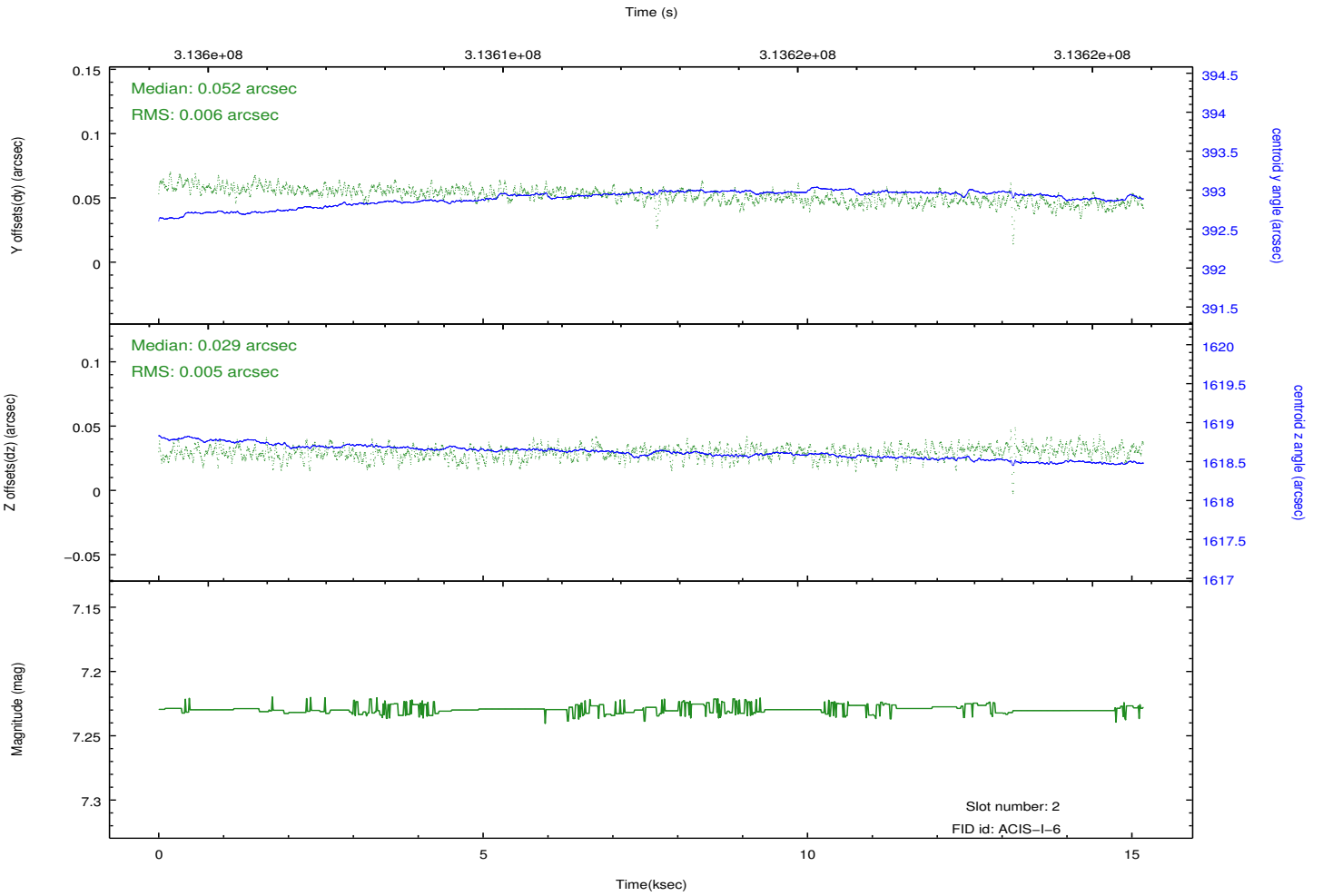
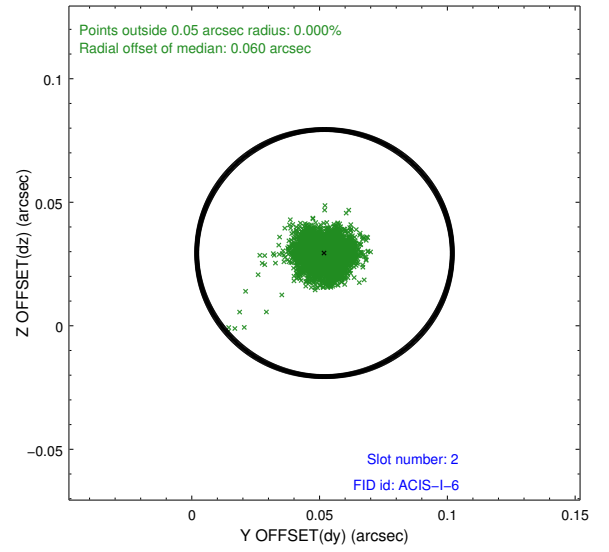
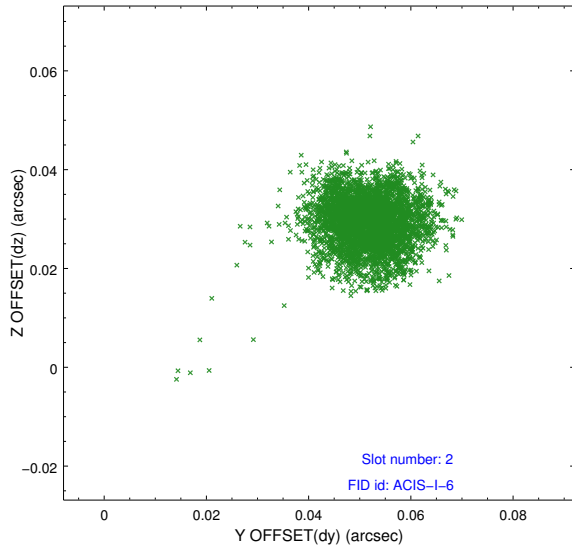
2.5.1 Slot 0



2.5.2 Slot 1



2.5.3 Slot 2



A Summary

A.1 Status

V&V Scientist	Jen Lauer
V&V Date (YYYY-MM-DD)	2012.05.08
V&V Edition	1
V&V Disposition and Status	OK
V&V Charge Time	15.0163181

A.2 Comments