

V&V Reference Report

L2 ASCDS Version : 8.4.4

Observation 9404 - L2 Version 2
Chandra X-Ray Center

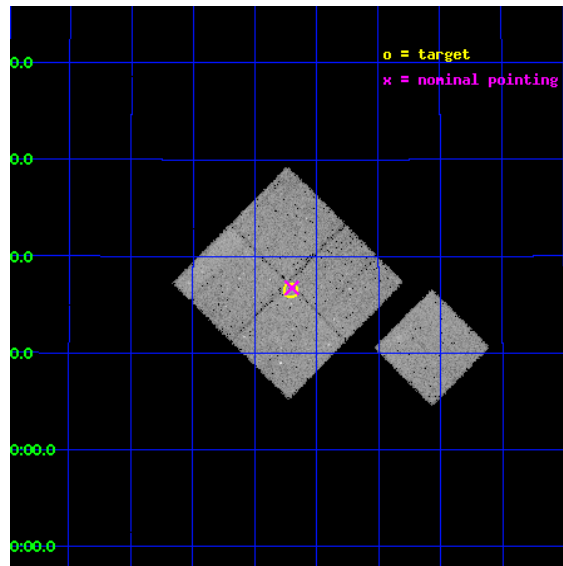
L2 Processing Date : May 11 2012

Contents

1	Front	2
2	OBI	3
2.1	OBI	3
2.1.1	Images	3
2.1.2	Bias	3
2.1.3	Parameters	4
2.1.4	Events	4
2.2	Compared Parameters	5
2.3	Aspect	6
2.4	Star Slots	9
2.4.1	Slot 3	9
2.4.2	Slot 4	10
2.4.3	Slot 5	11
2.4.4	Slot 6	12
2.4.5	Slot 7	13
2.5	FID Slots	14
2.5.1	Slot 0	14
2.5.2	Slot 1	15
2.5.3	Slot 2	16
A	Summary	17
A.1	Status	17
A.2	Comments	17

1 Front

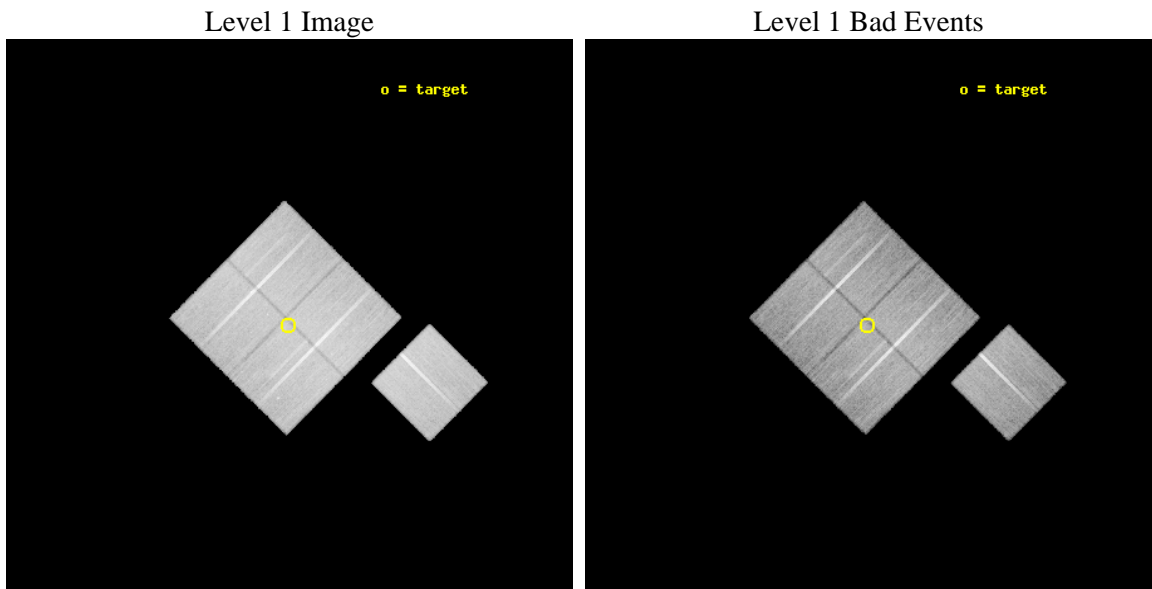
seq_num	800741	Sequence number
obs_id	9404	Observation id
title	The Active Galaxy Population in a Supercluster at z = 0.7	Proposal
observer	Prof Lori Lubin	Principal investigator
object	SC1324+3016	Source name
dtcycle	0	
cycle	P	events from which exps? Prim/Second/Both
ra_targ	201.177083	Observer's specified target RA [deg]
dec_targ	30.275	Observer's specified target Dec [deg]
ra_nom	201.17495834789	Nominal RA [deg]
dec_nom	30.279328716365	Nominal Dec [deg]
roll_nom	134.70975909527	Nominal Roll [deg]
revision	2	Processing version of data
ontime	30798.500236869	Sum of GTIs [s]
livetime	30396.095157748	Livetime [s]
ontime0	30789.015430927	Sum of GTIs [s]
ontime1	30798.479461849	Sum of GTIs [s]
ontime2	30792.218226314	Sum of GTIs [s]
ontime3	30798.500236869	Sum of GTIs [s]
ontime6	30792.115381241	Sum of GTIs [s]
l2events	103968	Number of level 2 events



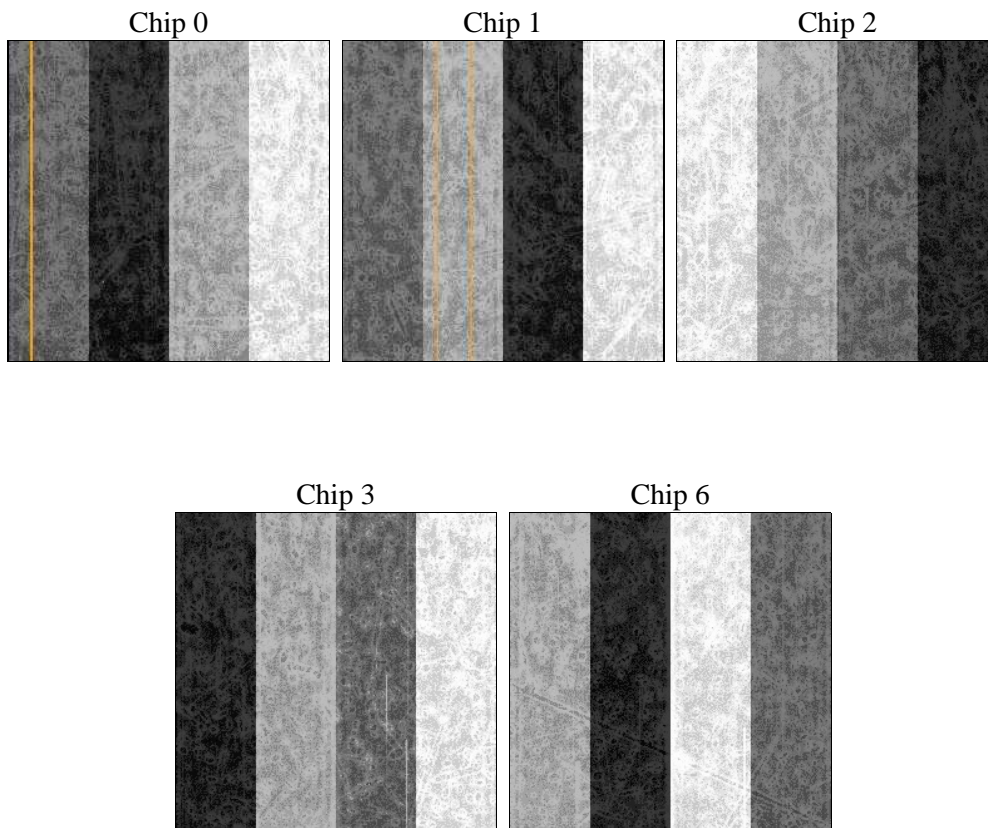
2 OBI

2.1 OBI

2.1.1 Images



2.1.2 Bias



2.1.3 Parameters

obi_num	0	Obi number	sched_exp_time	30754.929000	[s] Scheduled observation exposure time
ascdsver	8.4.4	Processing system revision	ontime	30798.500236869	Sum of GTIs [s]
caldsver	4.4.9	 	ontime0	30789.015430927	Sum of GTIs [s]
date	2012-05-11T13:47:56	Date and time of file creation	ontime1	30798.479461849	Sum of GTIs [s]
revision	2	Processing version of data	ontime2	30792.218226314	Sum of GTIs [s]
			ontime3	30798.500236869	Sum of GTIs [s]
			ontime6	30792.115381241	Sum of GTIs [s]
			l1events	1193594	Number of level 1 events

2.1.4 Events

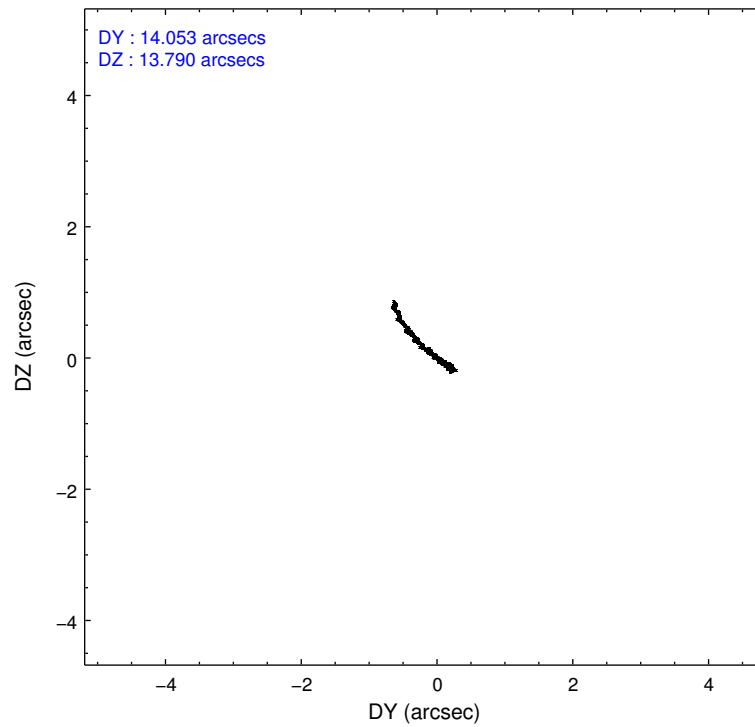
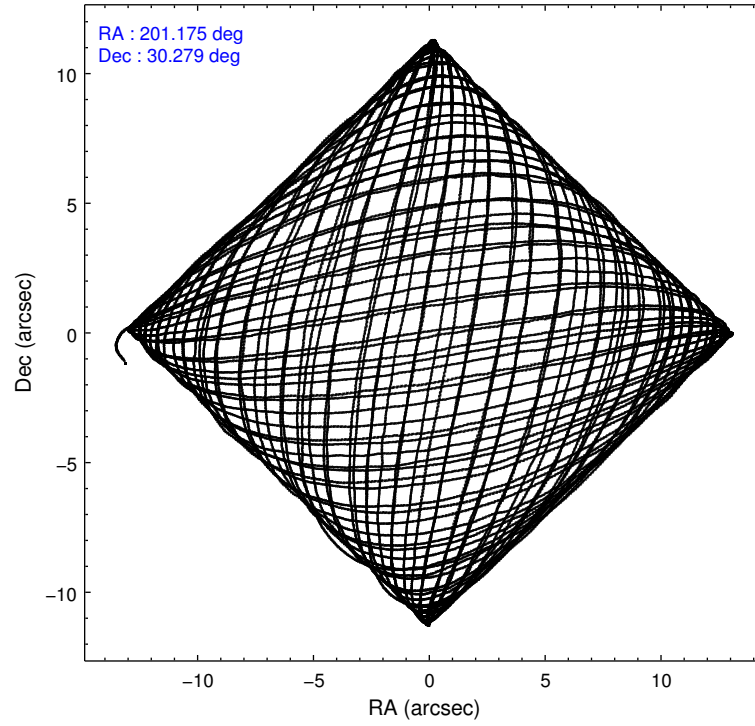
	ccd 0	ccd 1	ccd 2	ccd 3	ccd 6
level 1 events	226635	225571	253386	243768	244234
rejected events	202204	197669	229551	219777	219252
rejected %	89%	87%	90%	90%	89%

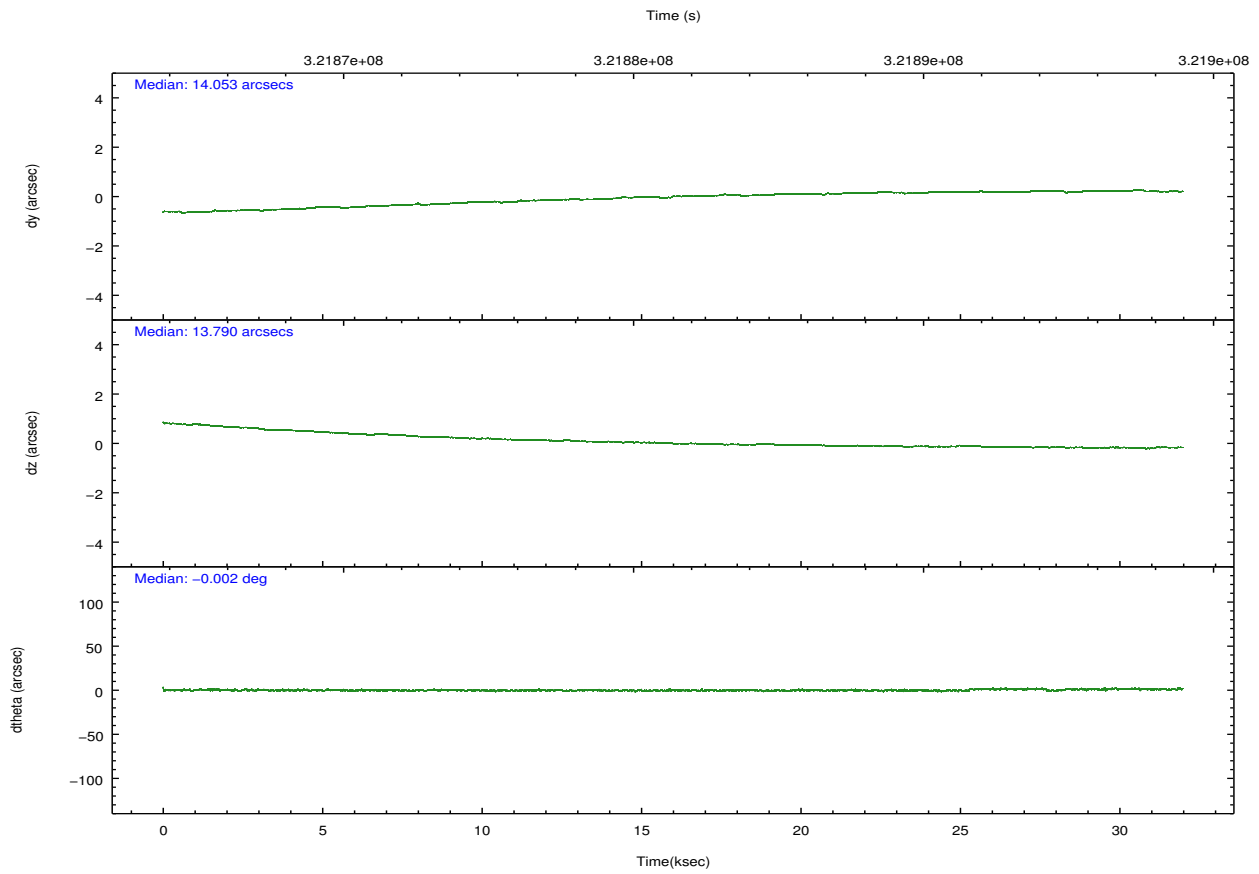
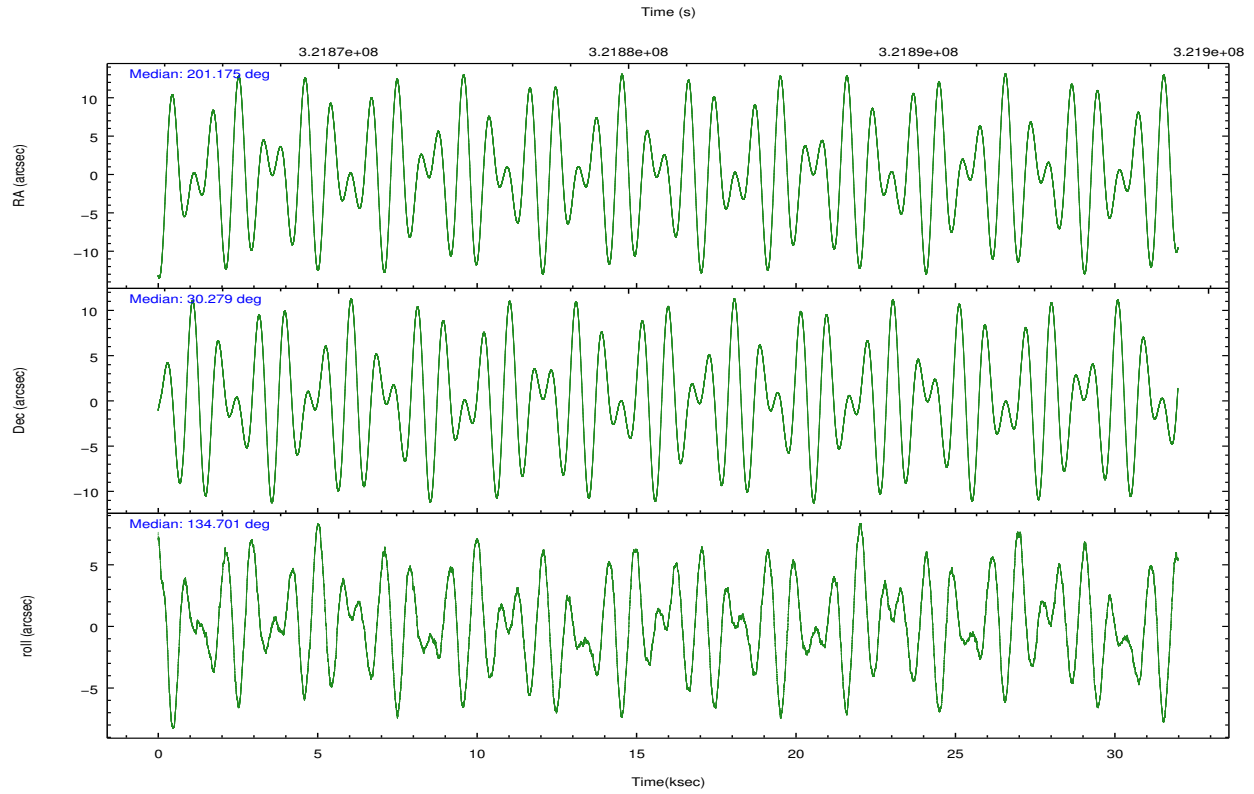
	ccd 0	ccd 1	ccd 2	ccd 3	ccd 6
grade 0 events	8257	10151	8505	8537	8661
	3%	4%	3%	3%	3%
grade 1 events	134	123	134	123	104
	0%	0%	0%	0%	0%
grade 2 events	5995	6251	5788	5336	5475
	2%	2%	2%	2%	2%
grade 3 events	2767	2979	2543	2683	2786
	1%	1%	1%	1%	1%
grade 4 events	2636	2884	2580	2618	2683
	1%	1%	1%	1%	1%
grade 5 events	8768	9570	8272	9934	9799
	3%	4%	3%	4%	4%
grade 6 events	4780	5641	4425	4821	5385
	2%	2%	1%	1%	2%
grade 7 events	193298	187972	221139	209716	209341
	85%	83%	87%	86%	85%

2.2 Compared Parameters

Parameter	Planned	Actual	Parameter	Planned	Actual
Instrument	ACIS	ACIS	Obspar format version number	7	7
Detector	ACIS-01236	ACIS-01236	Obspar file type	PREDICTED	ACTUAL
Grating	NONE	NONE	Obspar update status	NONE	UPDATED
Data mode	VFAINT	VFAINT	CCD I0 on	Y	Y
Observation mode	POINTING	POINTING	CCD I1 on	Y	Y
[deg] Pointing RA	201.205717	201.1749583478896	CCD I2 on	Y	Y
[deg] Pointing Dec	30.272185	30.27932871636534	CCD I3 on	Y	Y
[deg] Pointing Roll	134.485564	134.7097590952704	CCD S0 on	N	N
[mm] SIM focus pos	-0.782348	-0.7809083437167272	CCD S1 on	N	N
[mm] SIM defocus	0	0.001439871863259334	CCD S2 on	O1	Y
[mm] SIM translation stage pos	-233.592463	-233.5874344608287	CCD S3 on	N	N
[mm] SIM translation stage offset	0	-0.005018542100998502	CCD S4 on	N	N
[s] Observation start time (MET)	321866597.184000	321865093.59761	CCD S5 on	N	N
Observation start date	2008-03-14T07:22:12	2008-03-14T06:58:13	Number of optional ACIS chips dropped	0	0
[s] Observation end time (MET)	321897352.184000	321897590.71169	On-chip summing requested	N	N
Observation end date	2008-03-14T15:54:47	2008-03-14T15:59:50	Subarray requested	NONE	NONE
Read mode	TIMED	TIMED	Alternating exposures requested	N	N
			[s] Primary exposure time	0.000000	3.1

2.3 Aspect



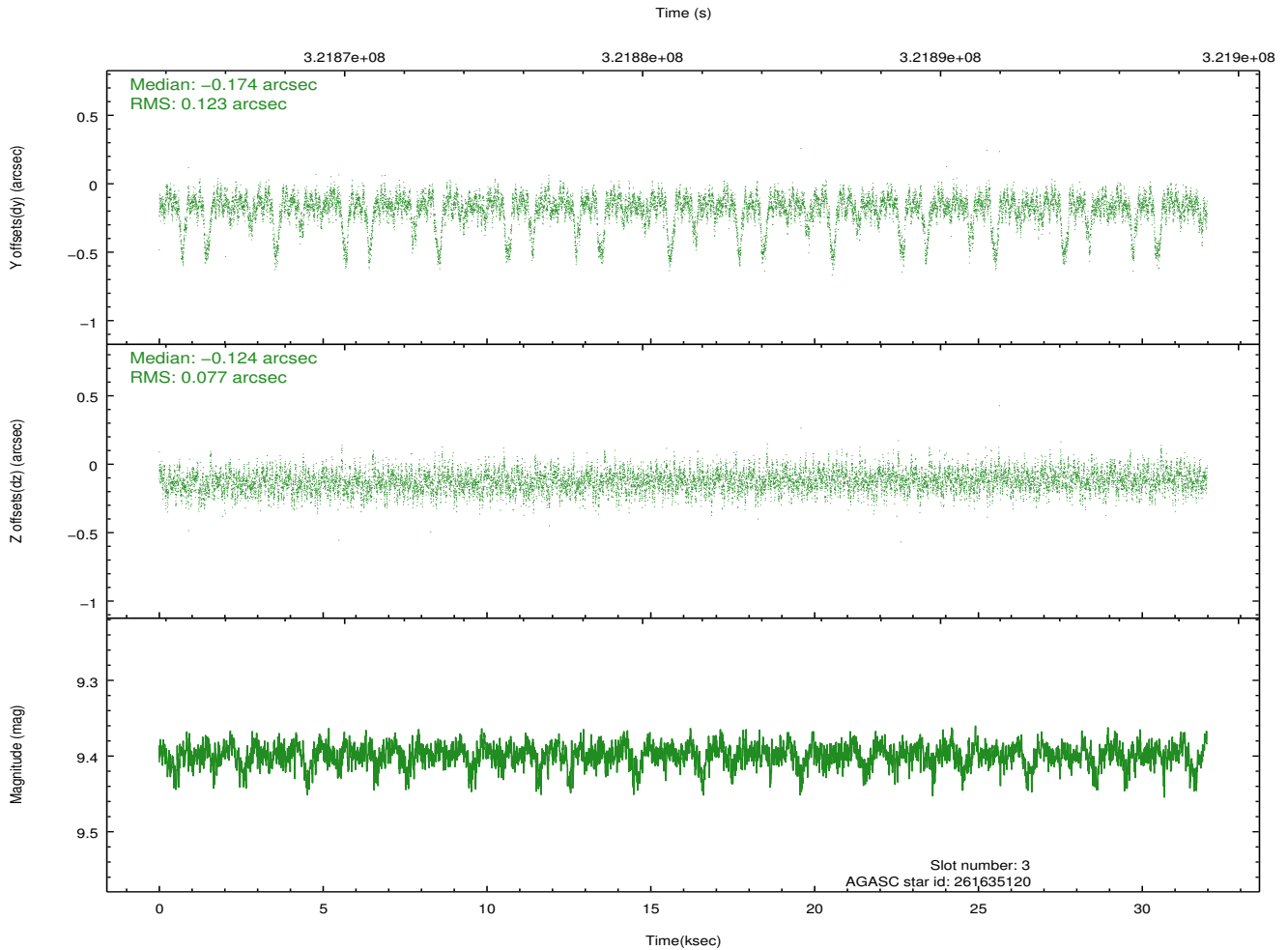
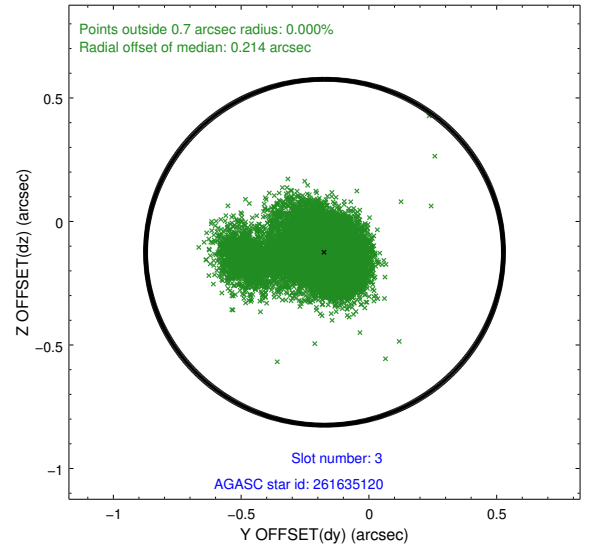
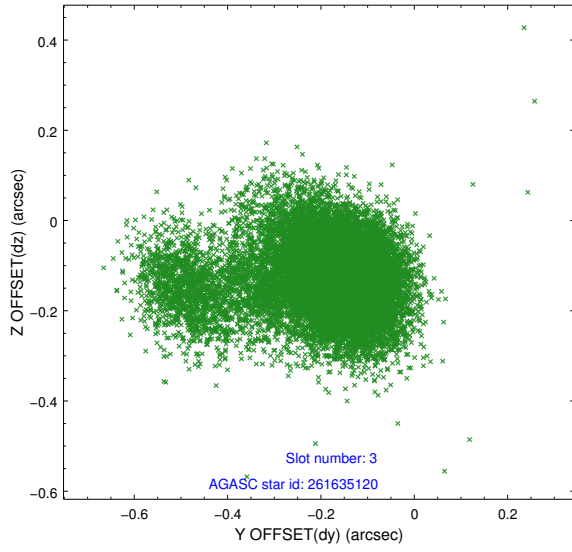


Slot Statistics

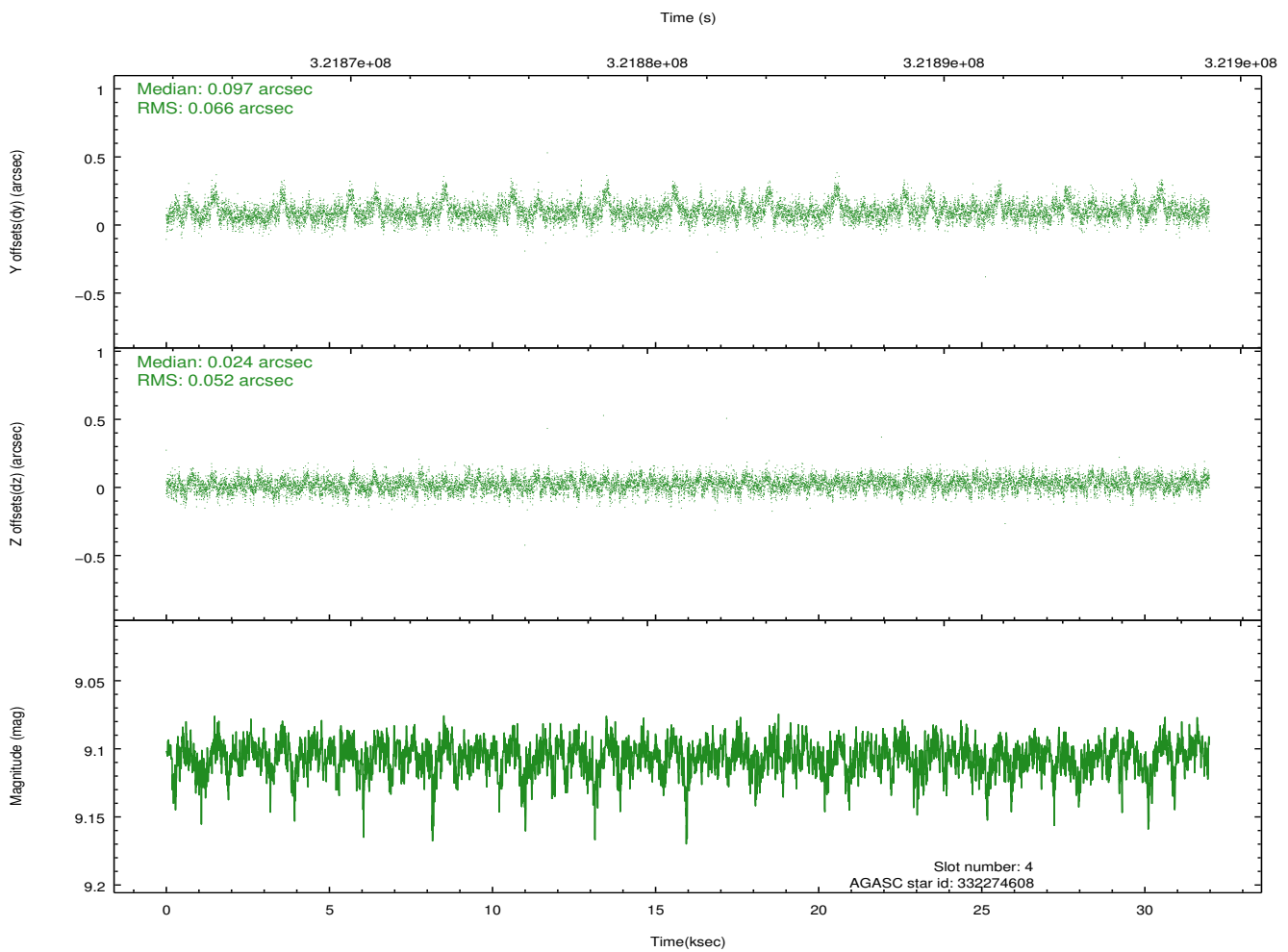
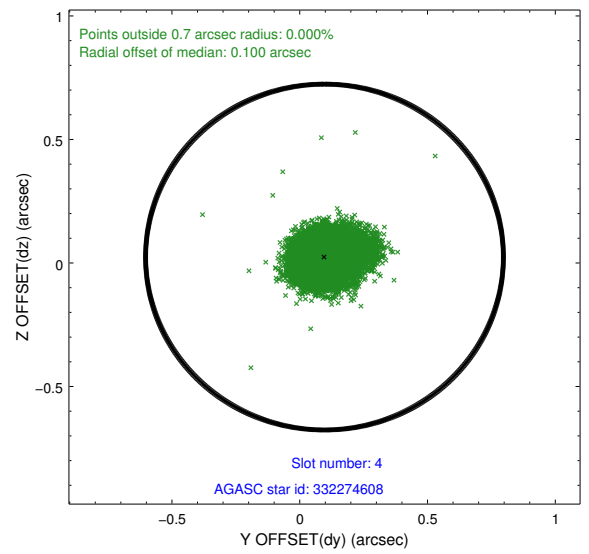
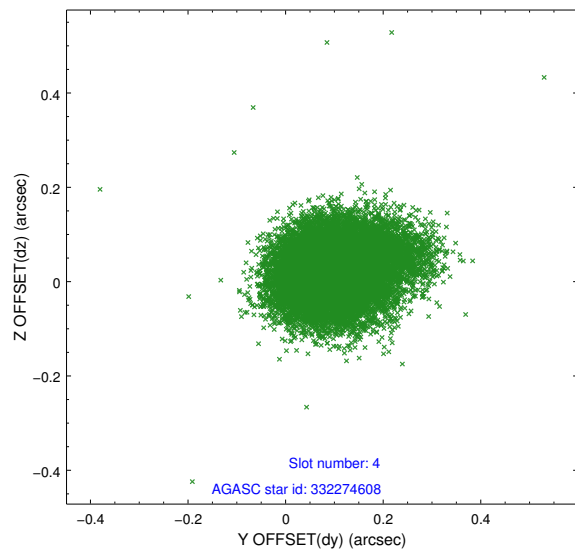
slot	status	id	mag	n_pts	med_dy	med_dz	dr1	dr2	ra	dec	mean_y	mean_z
0	FID	ACIS-I-1	7.24	7799	-0.010	0.021	0.013	0.020	0.000000	0.000000	925.51	-837.45
1	FID	ACIS-I-4	7.16	7799	0.168	0.015	0.009	0.016	0.000000	0.000000	2145.77	1062.32
2	FID	ACIS-I-5	7.22	7800	-0.257	0.036	0.013	0.022	0.000000	0.000000	-1822.65	1060.26
3	GUIDE	261635120	9.40	15584	-0.174	-0.124	0.130	0.313	200.629723	29.931982	388.48	2137.03
4	GUIDE	332274608	9.11	15592	0.097	0.024	0.088	0.149	200.411227	30.522072	2375.10	1122.19
5	GUIDE	332274952	9.19	15582	0.174	-0.158	0.104	0.165	200.863262	30.539141	1431.31	83.62
6	GUIDE	332400040	8.91	15491	-0.090	0.170	0.087	0.137	201.663081	30.837002	462.69	-2434.92
7	GUIDE	332402160	8.13	15596	0.013	0.089	0.066	0.107	201.528672	30.702288	406.29	-1798.95

2.4 Star Slots

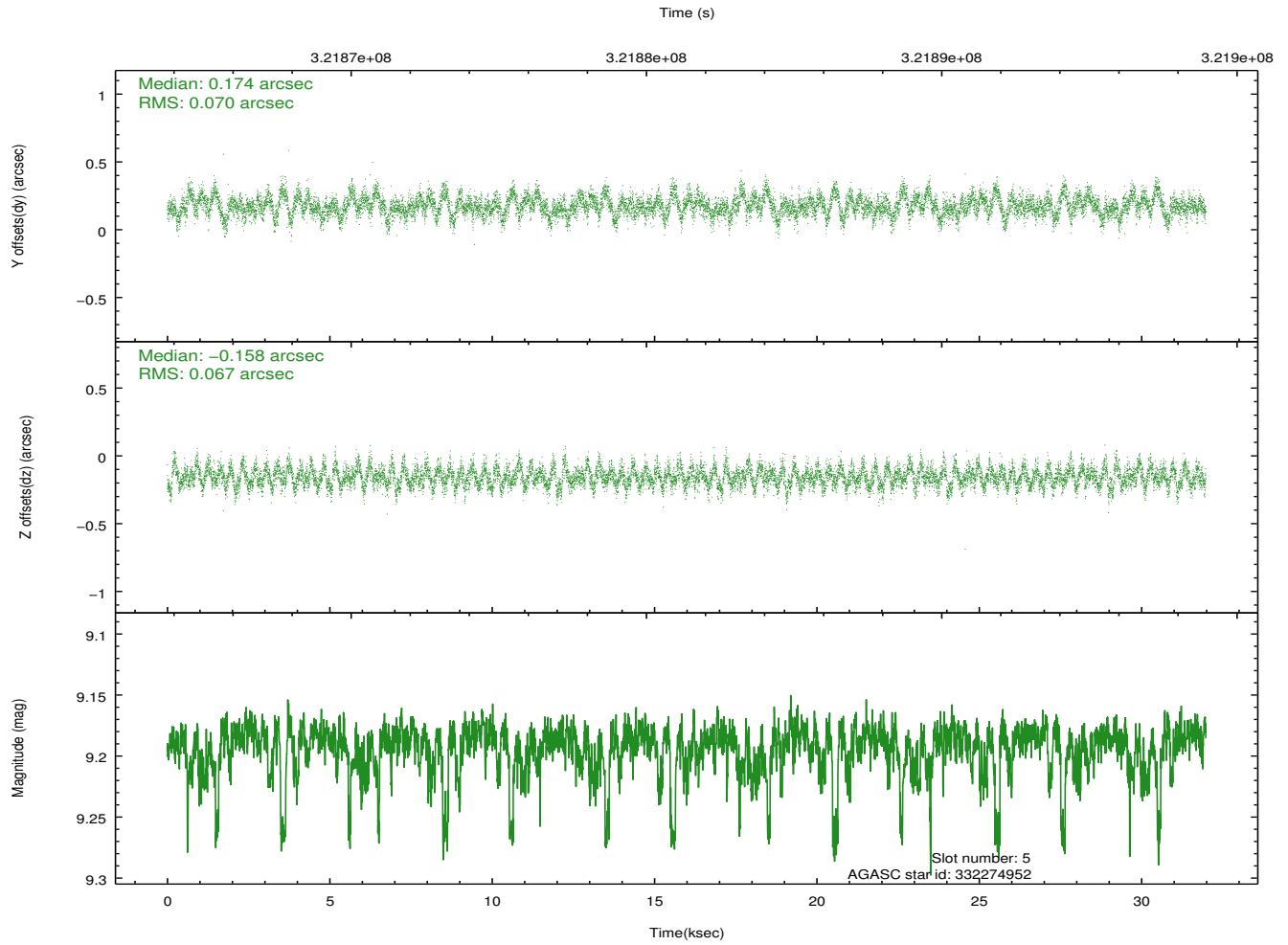
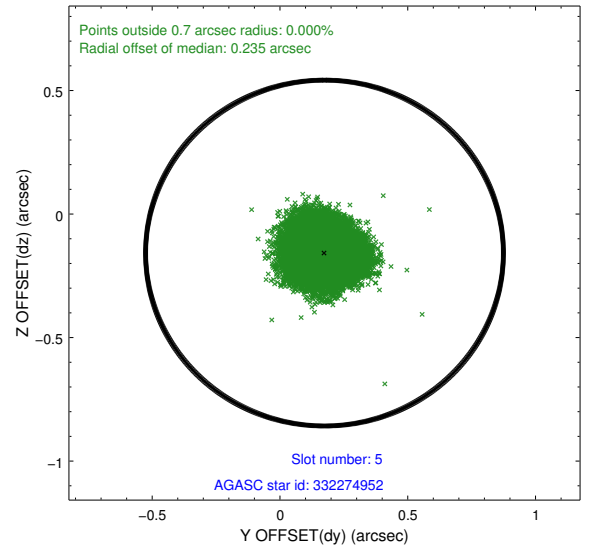
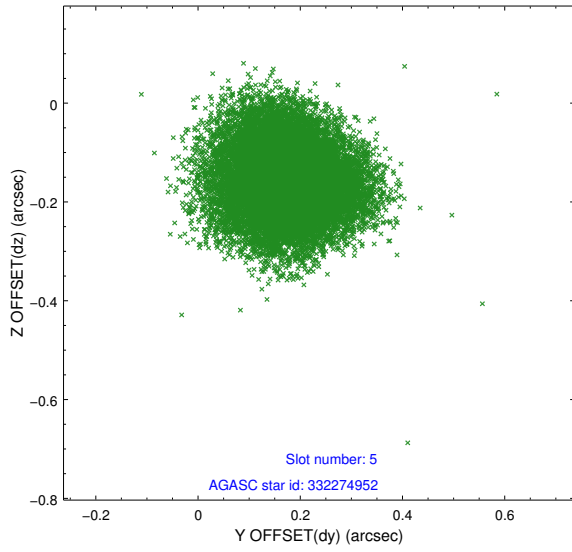
2.4.1 Slot 3



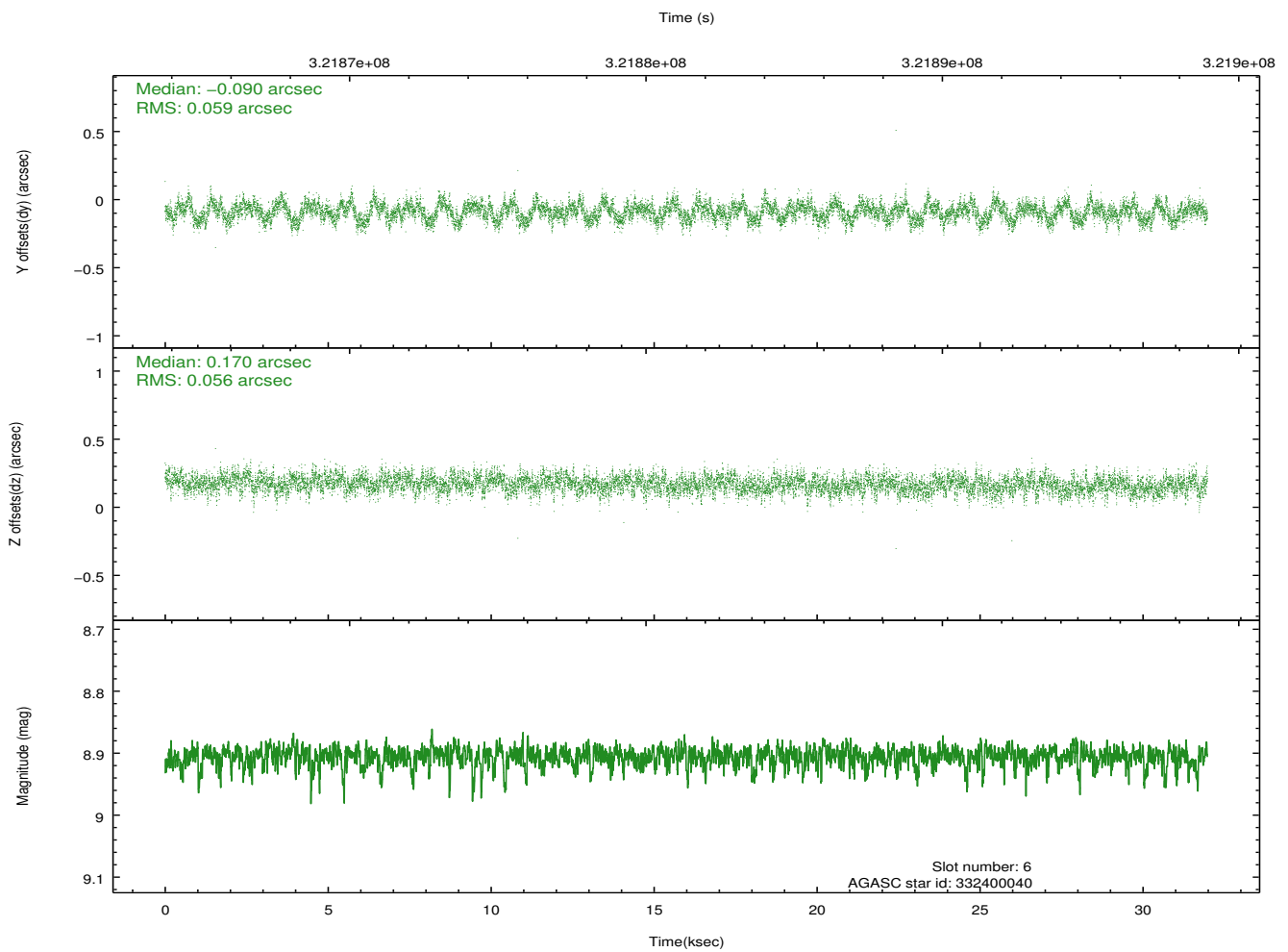
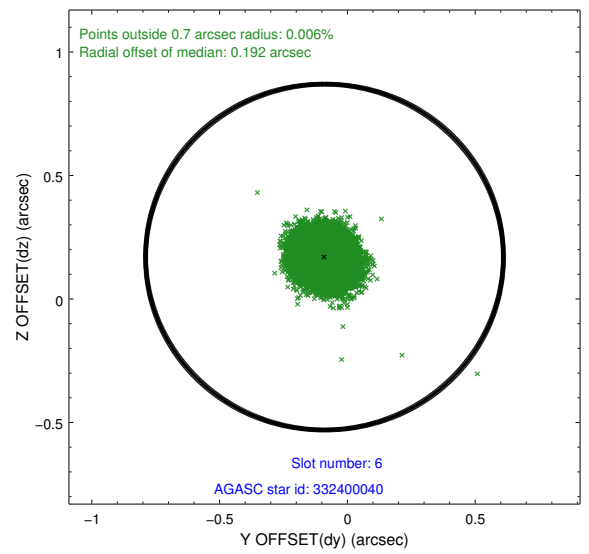
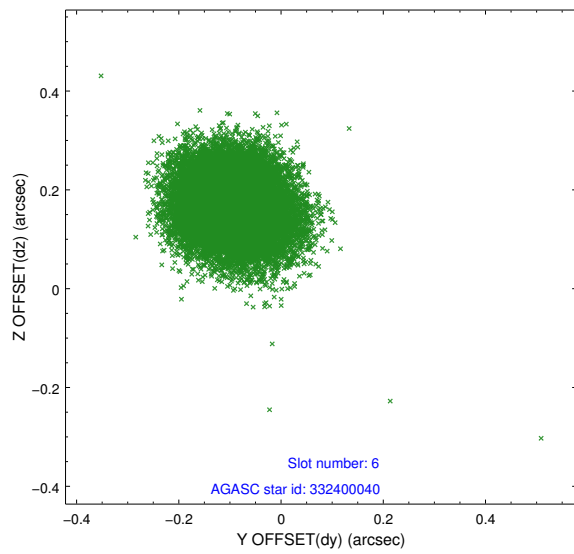
2.4.2 Slot 4



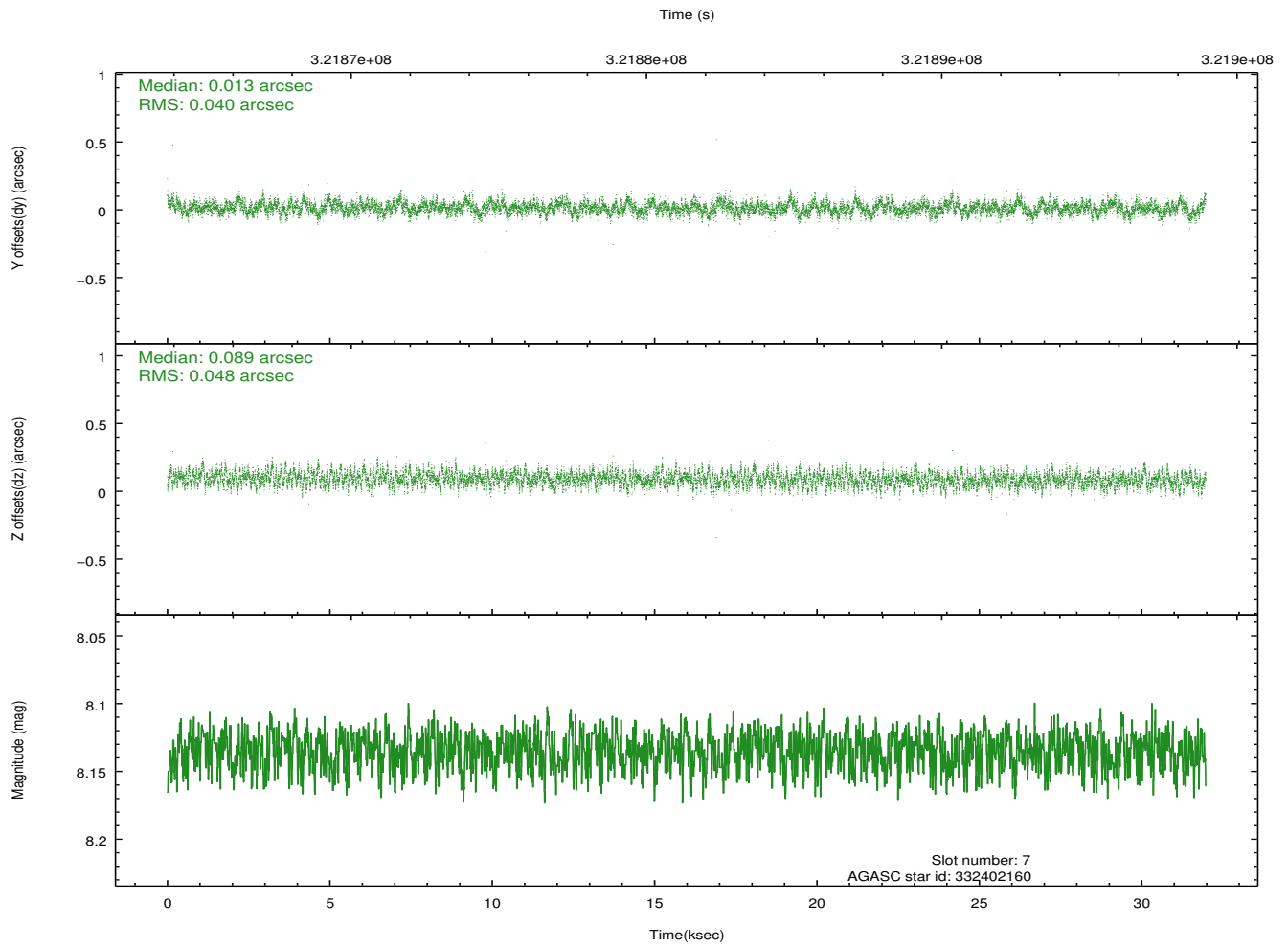
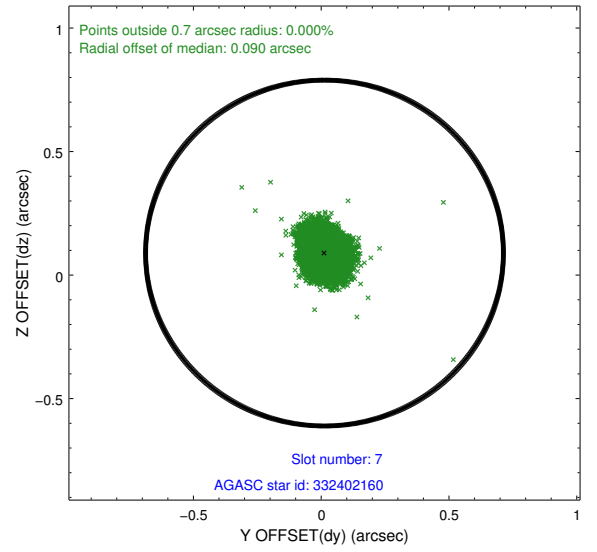
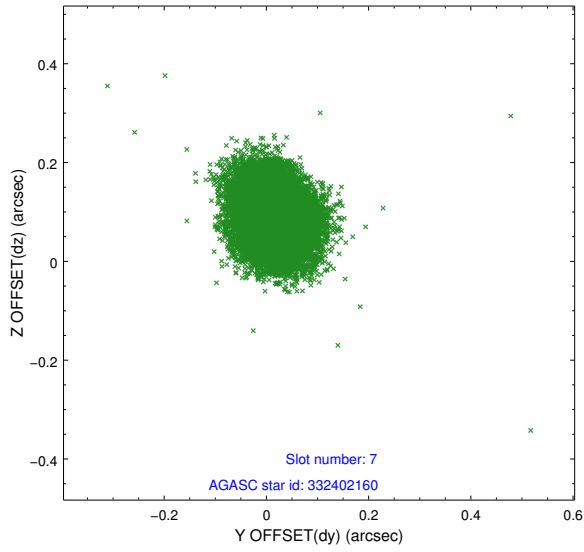
2.4.3 Slot 5



2.4.4 Slot 6

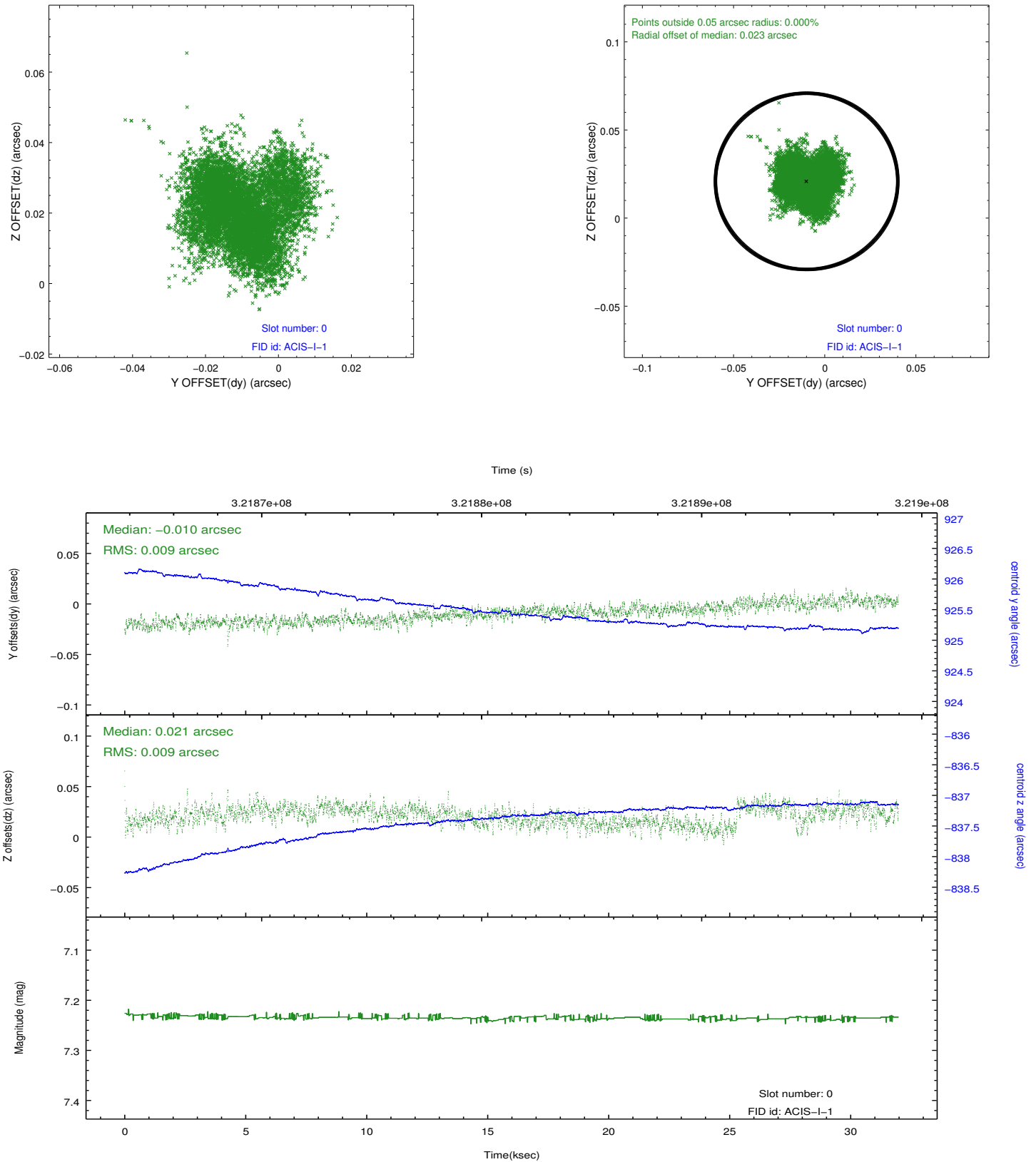


2.4.5 Slot 7

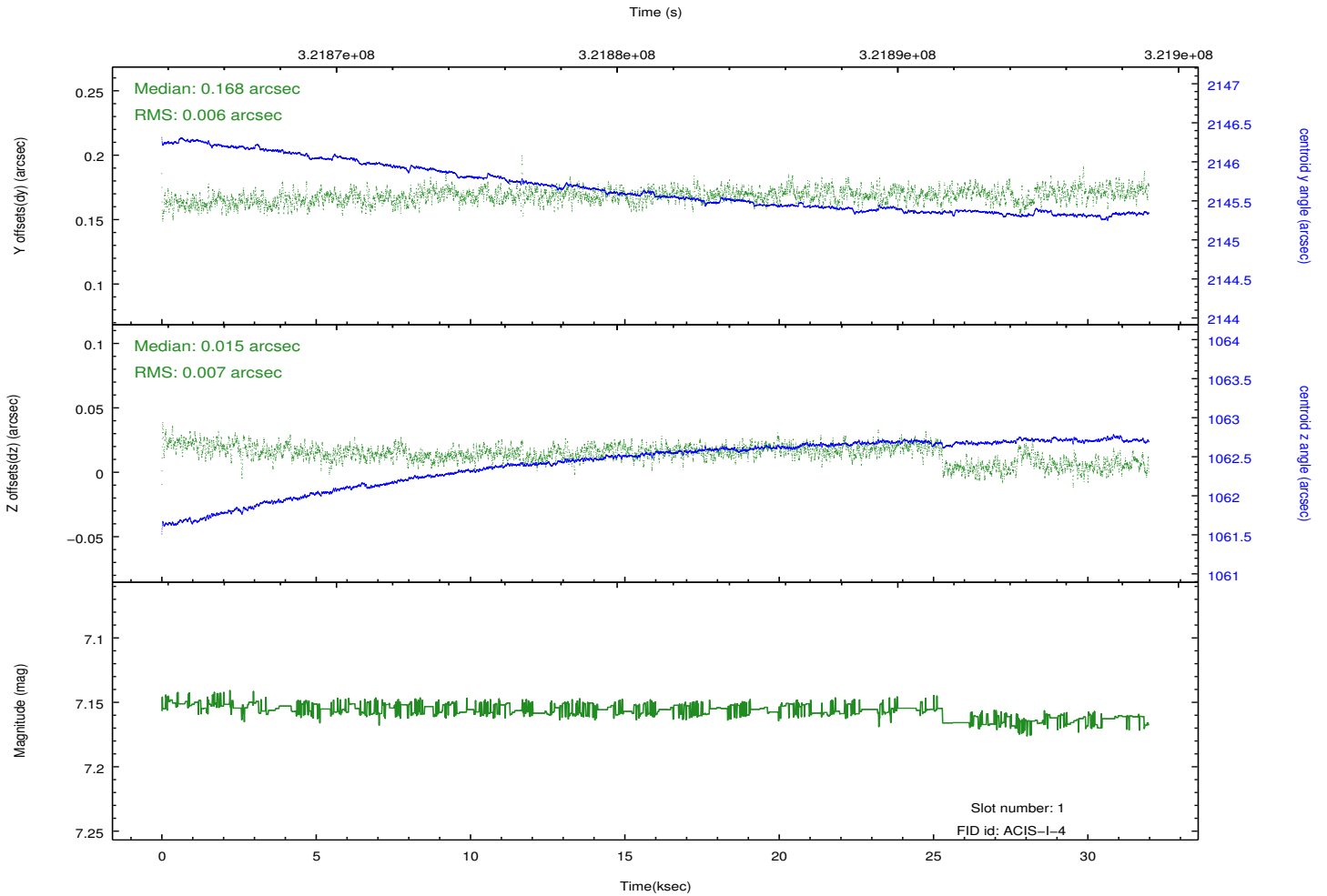
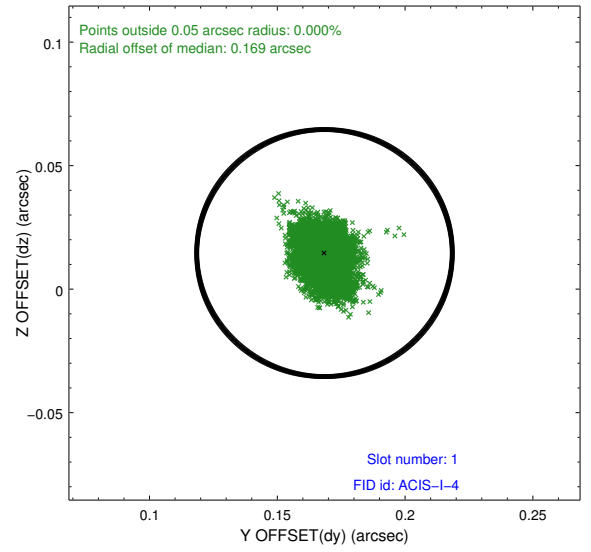
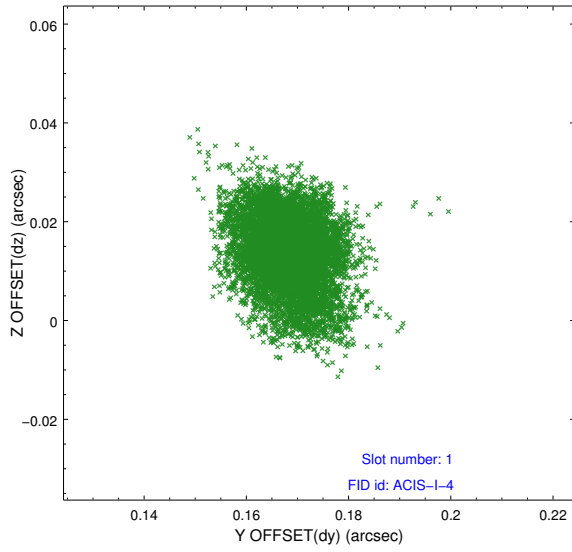


2.5 FID Slots

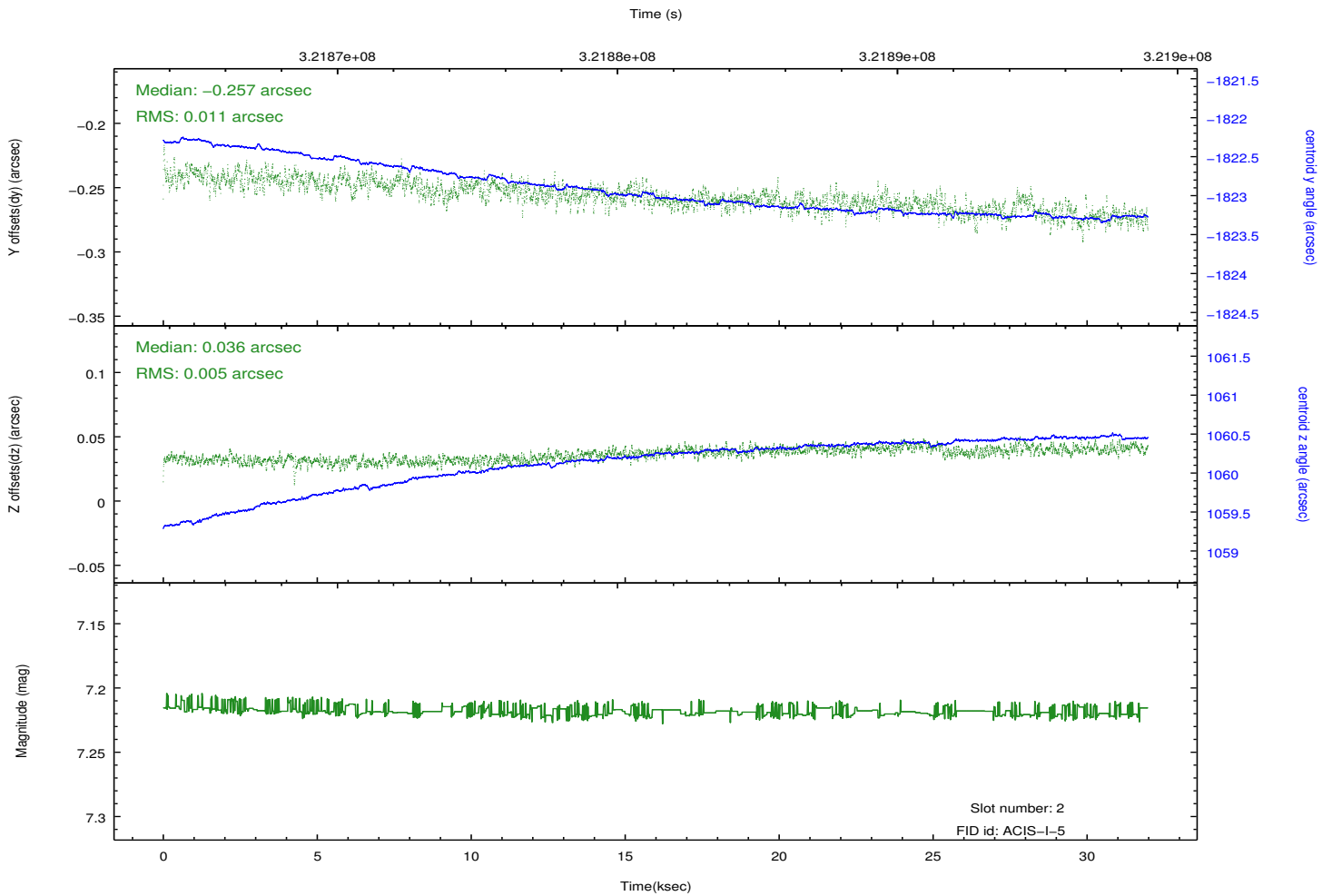
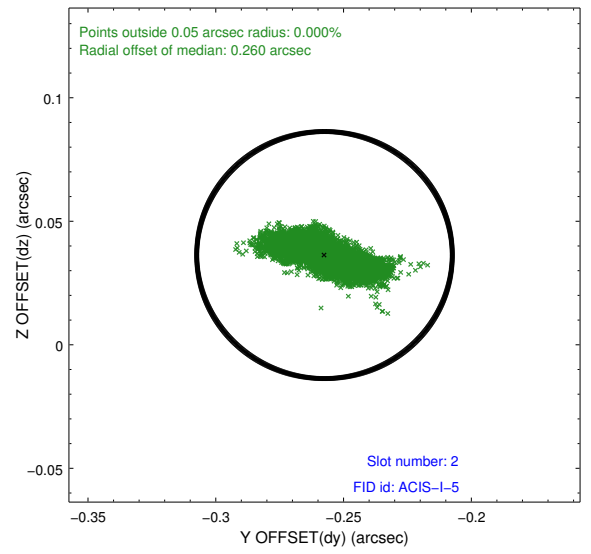
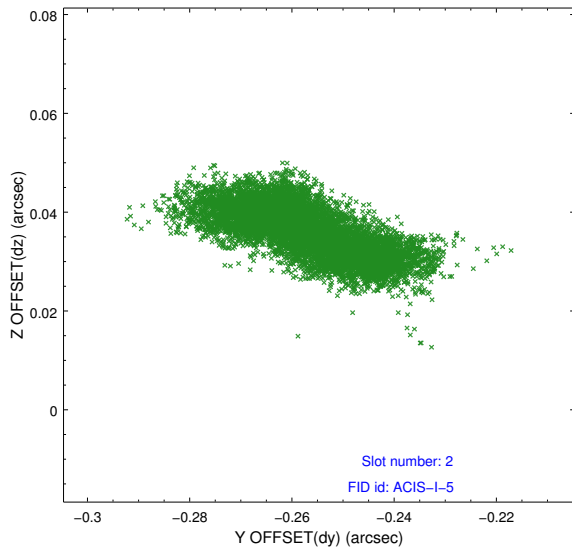
2.5.1 Slot 0



2.5.2 Slot 1



2.5.3 Slot 2



A Summary

A.1 Status

V&V Scientist	Beth Sundheim
V&V Date (YYYY-MM-DD)	2012.05.14
V&V Edition	1
V&V Disposition and Status	OK
V&V Charge Time	30.7985002

A.2 Comments

Joint proposal with NRAO.