

V&V Reference Report

L2 ASCDS Version : 8.4.4

Observation 9434 - L2 Version 2
Chandra X-Ray Center

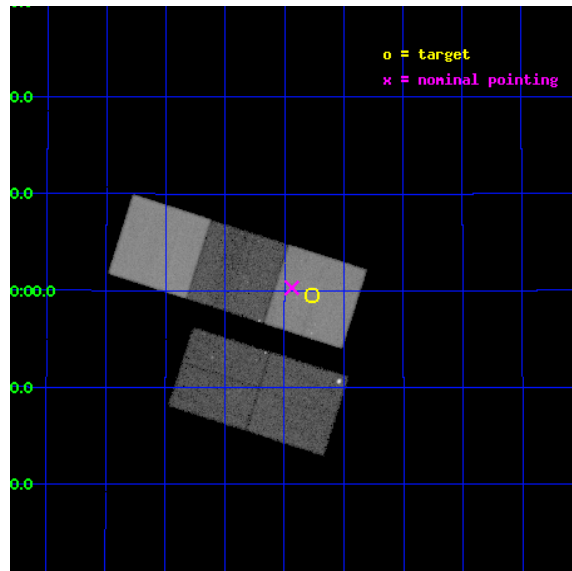
L2 Processing Date : May 24 2012

Contents

1	Front	2
2	OBI	3
2.1	OBI	3
2.1.1	Images	3
2.1.2	Bias	3
2.1.3	Parameters	4
2.1.4	Events	4
2.2	Compared Parameters	5
2.3	Aspect	6
2.4	Star Slots	9
2.4.1	Slot 3	9
2.4.2	Slot 4	10
2.4.3	Slot 5	11
2.4.4	Slot 6	12
2.4.5	Slot 7	13
2.5	FID Slots	14
2.5.1	Slot 0	14
2.5.2	Slot 1	15
2.5.3	Slot 2	16
A	Summary	17
A.1	Status	17
A.2	Comments	17

1 Front

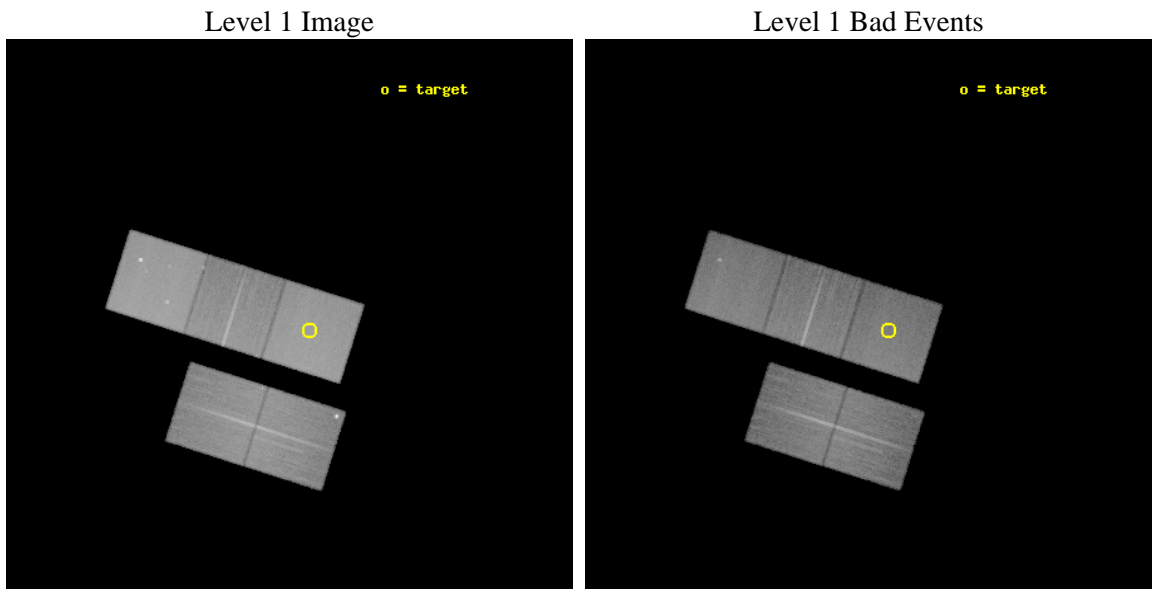
seq_num	900780	Sequence number
obs_id	9434	Observation id
title	Intermediate Redshift Groups in the XBootes Survey	Proposal title
observer	Professor Gordon Garmire	Principal investigator
object	CXOXB J142916.1+335929	Source name
dtycycle	0	
cycle	P	events from which exps? Prim/Second/Both
ra_targ	217.317083	Observer's specified target RA [deg]
dec_targ	33.991583	Observer's specified target Dec [deg]
ra_nom	217.35925795997	Nominal RA [deg]
dec_nom	34.005246248044	Nominal Dec [deg]
roll_nom	17.591716438524	Nominal Roll [deg]
revision	2	Processing version of data
ontime	25159.600193501	Sum of GTIs [s]
livetime	24830.871494744	Livetime [s]
ontime2	25150.177262783	Sum of GTIs [s]
ontime3	25156.459233165	Sum of GTIs [s]
ontime5	25159.600193501	Sum of GTIs [s]
ontime6	25159.600193501	Sum of GTIs [s]
ontime7	25159.600193501	Sum of GTIs [s]
l2events	401741	Number of level 2 events



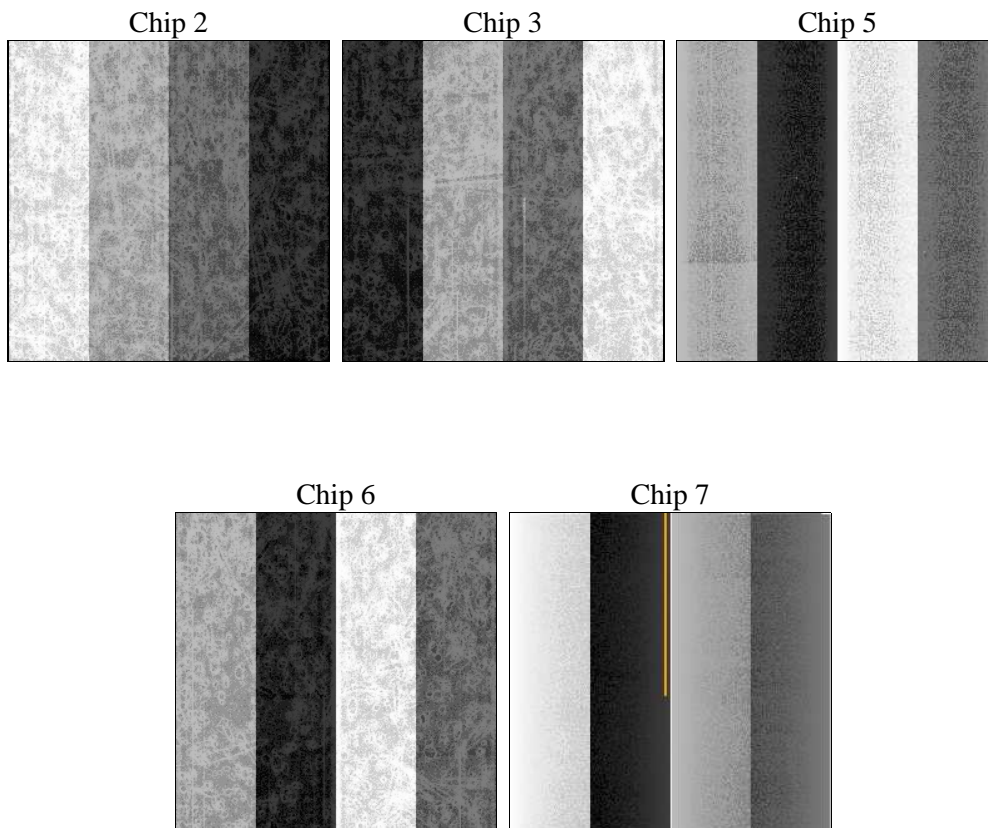
2 OBI

2.1 OBI

2.1.1 Images



2.1.2 Bias



2.1.3 Parameters

obi_num	0	Obi number	sched_exp_time	25000.000000	[s] Scheduled observation exposure time
ascdsver	8.4.4	Processing system revision	ontime	25159.600193501	Sum of GTIs [s]
caldbver	4.4.9	 	ontime2	25150.177262783	Sum of GTIs [s]
date	2012-05-24T03:17:09	Date and time of file creation	ontime3	25156.459233165	Sum of GTIs [s]
revision	2	Processing version of data	ontime5	25159.600193501	Sum of GTIs [s]
			ontime6	25159.600193501	Sum of GTIs [s]
			ontime7	25159.600193501	Sum of GTIs [s]
			l1events	1499636	Number of level 1 events

2.1.4 Events

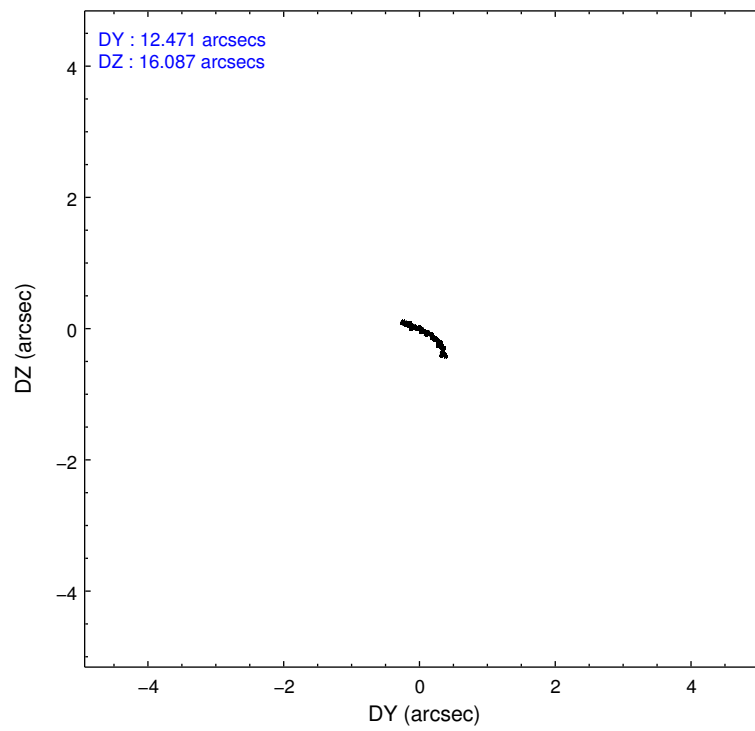
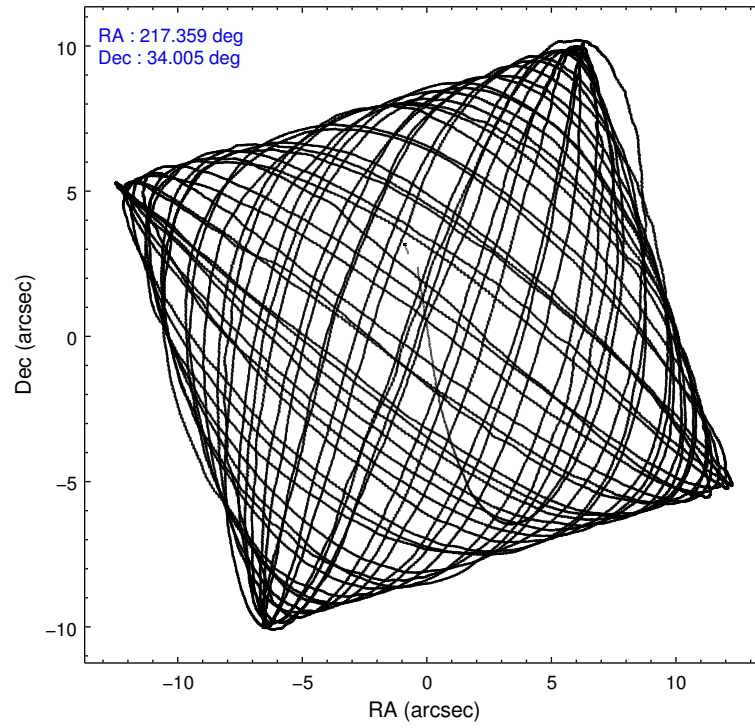
	ccd 2	ccd 3	ccd 5	ccd 6	ccd 7
level 1 events	244872	251180	395494	254807	353283
rejected events	214093	214737	214693	223634	205746
rejected %	87%	85%	54%	87%	58%

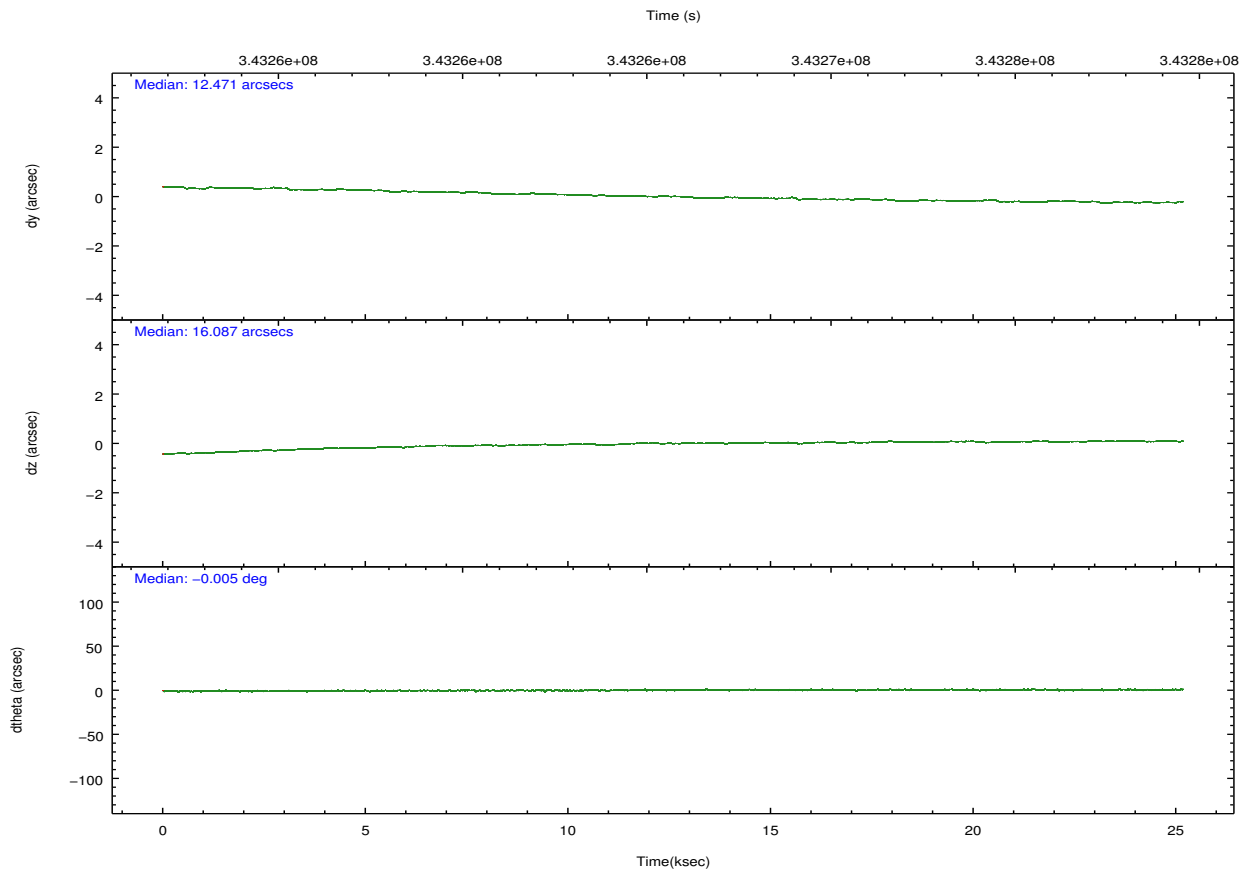
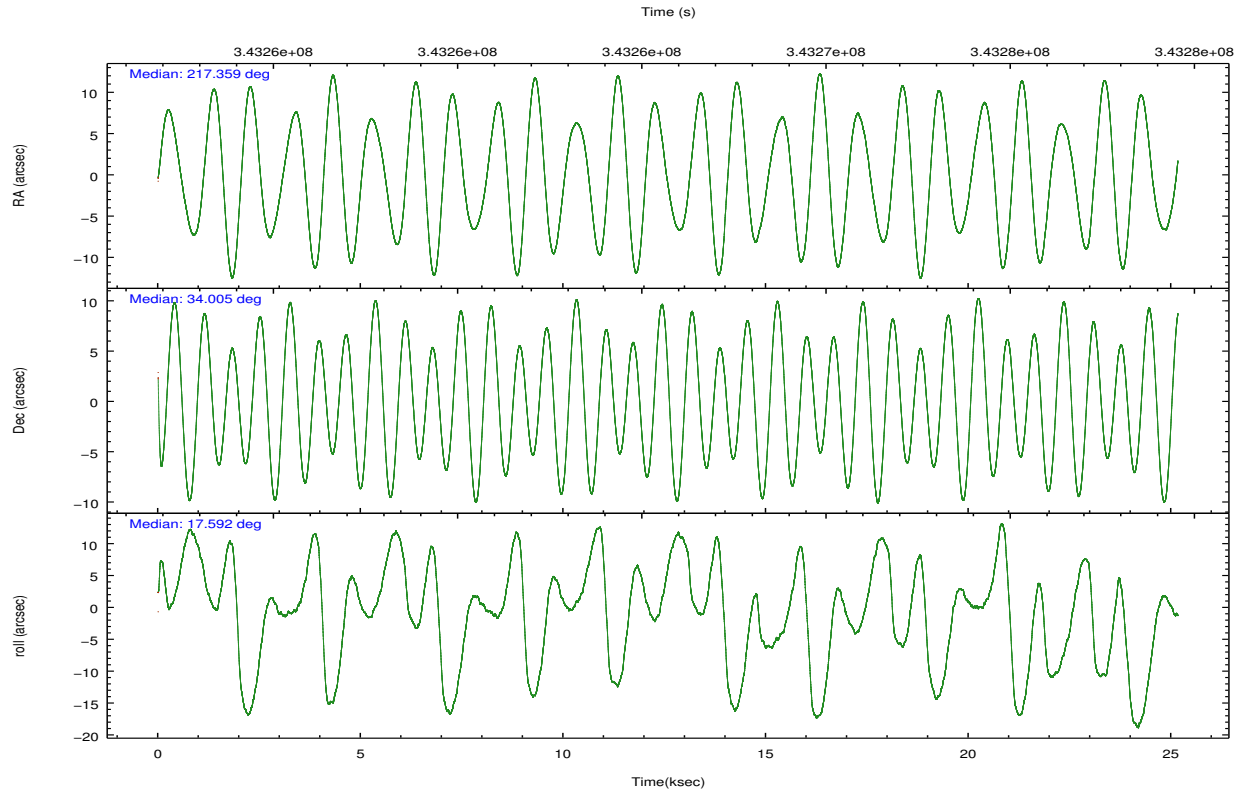
	ccd 2	ccd 3	ccd 5	ccd 6	ccd 7
grade 0 events	13761	18195	12713	12286	12982
	5%	7%	3%	4%	3%
grade 1 events	141	239	607	131	368
	0%	0%	0%	0%	0%
grade 2 events	6372	6703	59184	6852	30384
	2%	2%	14%	2%	8%
grade 3 events	2786	3020	6251	2956	12198
	1%	1%	1%	1%	3%
grade 4 events	2716	3076	6001	2877	12297
	1%	1%	1%	1%	3%
grade 5 events	9925	12001	27726	12034	32643
	4%	4%	7%	4%	9%
grade 6 events	5182	5477	96813	6242	79819
	2%	2%	24%	2%	22%
grade 7 events	203989	202469	186199	211429	172592
	83%	80%	47%	82%	48%

2.2 Compared Parameters

Parameter	Planned	Actual	Parameter	Planned	Actual
Instrument	ACIS	ACIS	Obspar format version number	7	7
Detector	ACIS-23567	ACIS-23567	Obspar file type	PREDICTED	ACTUAL
Grating	NONE	NONE	Obspar update status	NONE	UPDATED
Data mode	VFAINT	VFAINT	CCD I0 on	N	N
Observation mode	POINTING	POINTING	CCD I1 on	N	N
[deg] Pointing RA	217.337352	217.3592579599728	CCD I2 on	O1	Y
[deg] Pointing Dec	33.984814	34.00524624804364	CCD I3 on	O2	Y
[deg] Pointing Roll	17.447343	17.59171643852441	CCD S0 on	N	N
[mm] SIM focus pos	-0.684267	-0.6828225247311905	CCD S1 on	Y	Y
[mm] SIM defocus	0	0.001444936568705701	CCD S2 on	Y	Y
[mm] SIM translation stage pos	-190.132523	-190.145094680475	CCD S3 on	Y	Y
[mm] SIM translation stage offset	0	0.01257209746719923	CCD S4 on	N	N
[s] Observation start time (MET)	343253299.184000	343252298.02983	CCD S5 on	N	N
Observation start date	2008-11-16T20:07:14	2008-11-16T19:51:38	Number of optional ACIS chips dropped	0	0
[s] Observation end time (MET)	343278299.184000	343279318.56866	On-chip summing requested	N	N
Observation end date	2008-11-17T03:03:54	2008-11-17T03:21:58	Subarray requested	NONE	NONE
Read mode	TIMED	TIMED	Alternating exposures requested	N	N
			[s] Primary exposure time	0.000000	3.1

2.3 Aspect



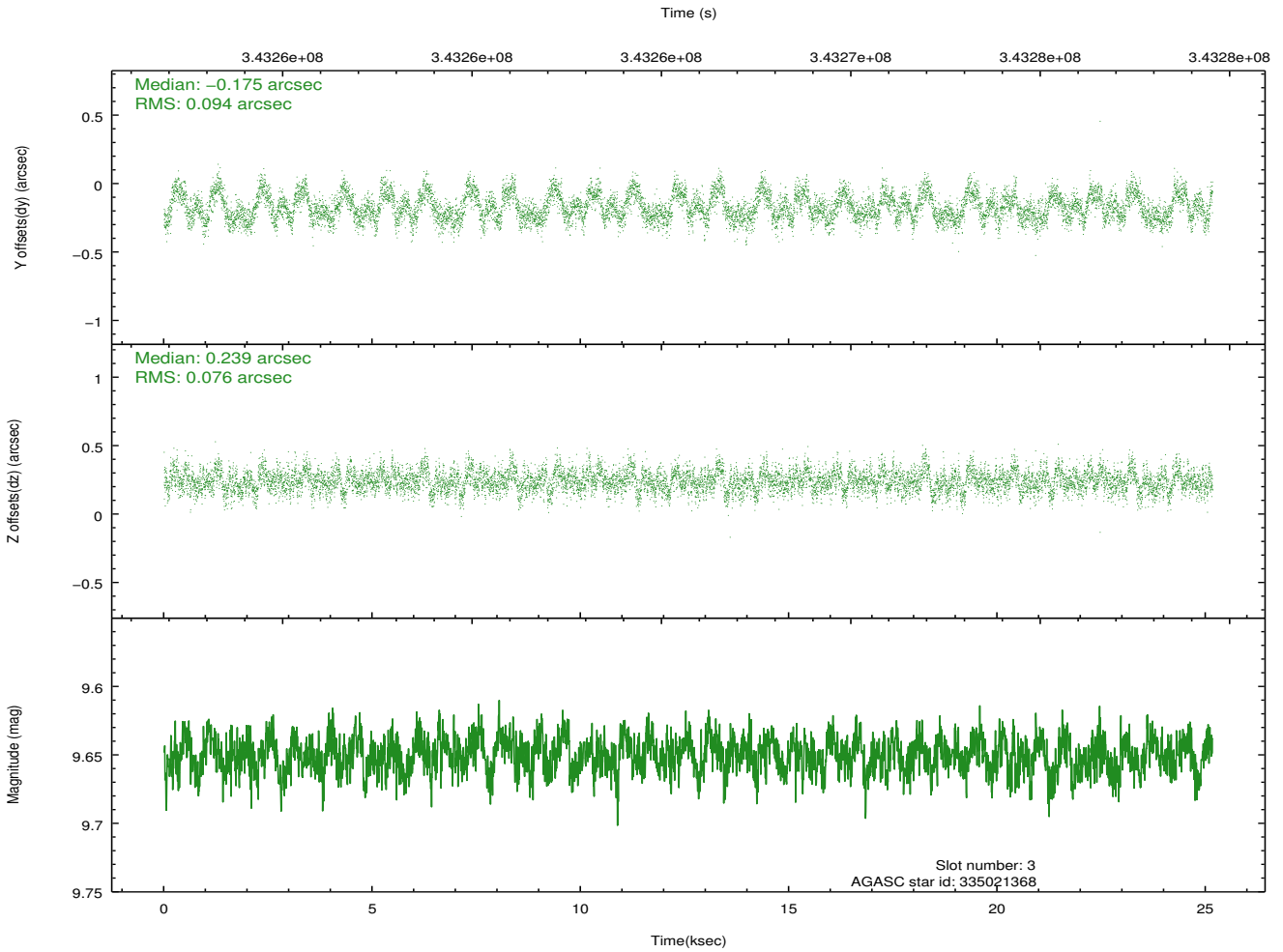
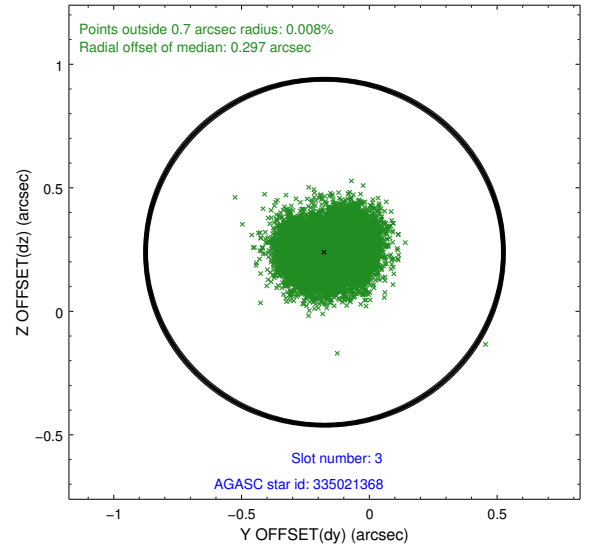
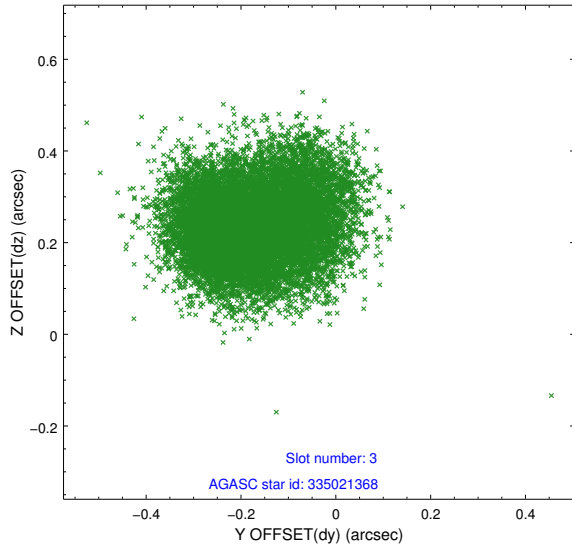


Slot Statistics

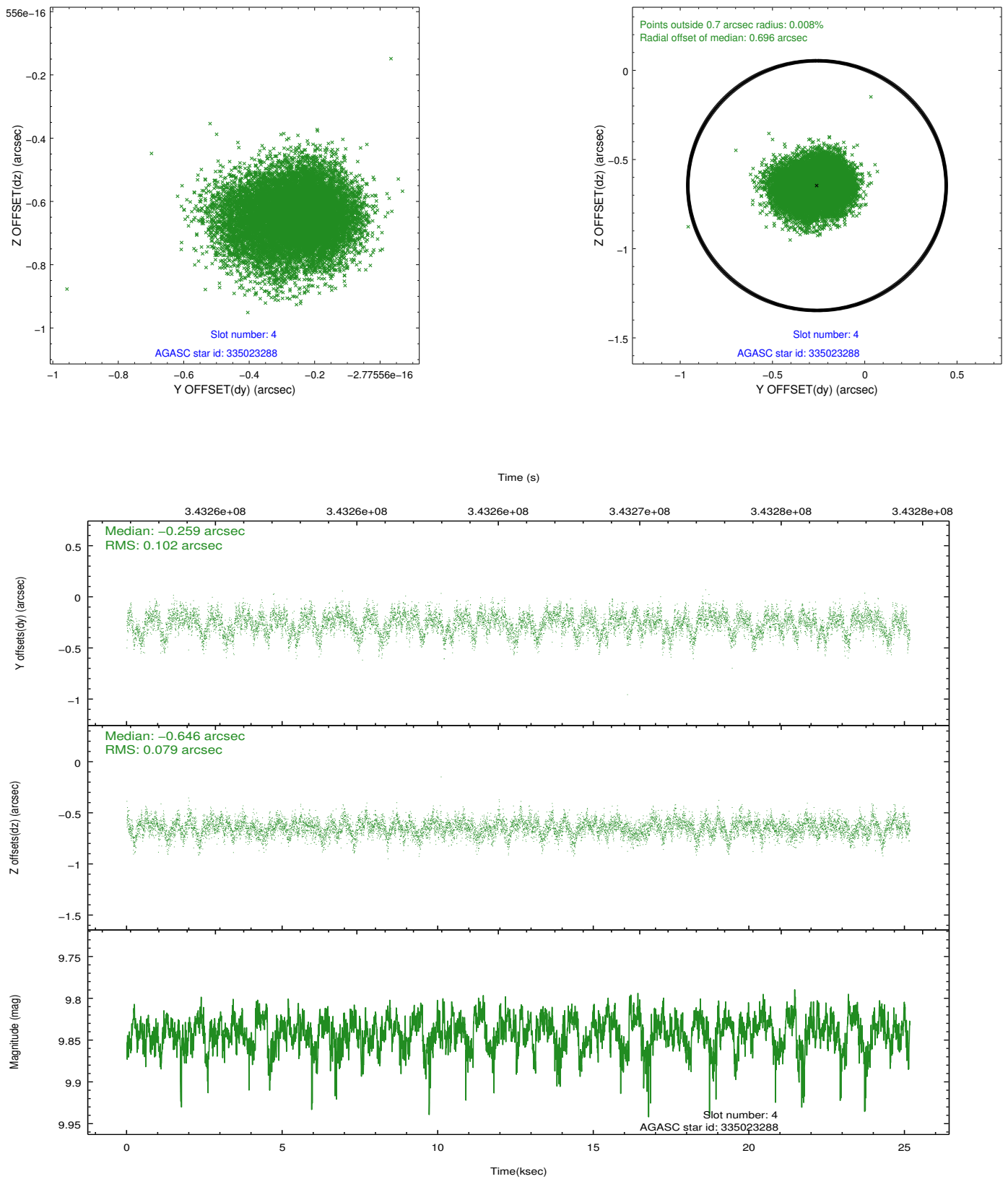
slot	status	id	mag	n_pts	med_dy	med_dz	dr1	dr2	ra	dec	mean_y	mean_z
0	FID	ACIS-S-2	6.89	6139	-0.038	-0.009	0.007	0.011	0.000000	0.000000	-765.42	-1737.35
1	FID	ACIS-S-4	6.97	6138	0.137	0.020	0.013	0.020	0.000000	0.000000	2147.96	171.07
2	FID	ACIS-S-5	7.01	6139	-0.131	-0.003	0.011	0.017	0.000000	0.000000	-1818.22	164.81
3	GUIDE	335021368	9.65	12262	-0.175	0.239	0.131	0.205	217.529643	33.934817	494.14	-342.93
4	GUIDE	335023288	9.84	12226	-0.259	-0.646	0.138	0.222	217.791365	34.425735	1762.97	1112.51
5	GUIDE	335025848	9.71	12228	0.149	0.181	0.145	0.223	217.530531	33.778292	329.19	-881.57
6	GUIDE	335028696	9.15	12266	-0.269	0.204	0.110	0.171	217.260519	33.844112	-371.06	-413.90
7	GUIDE	335028240	9.15	12266	0.546	0.021	0.105	0.168	216.746851	33.385009	-2339.02	-1522.30

2.4 Star Slots

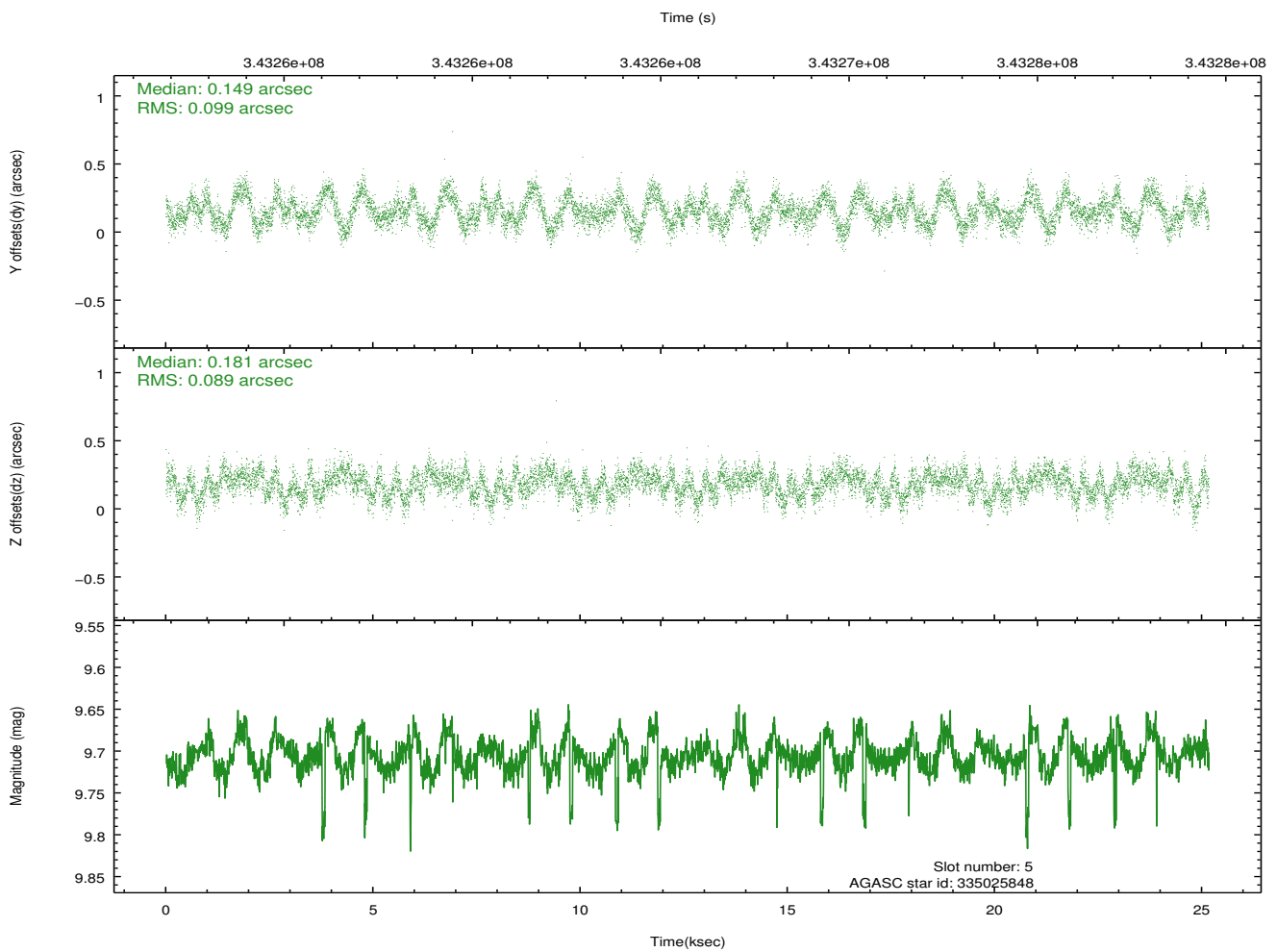
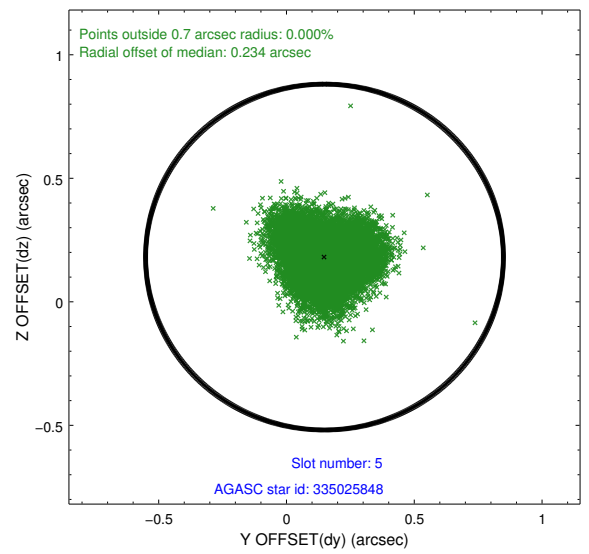
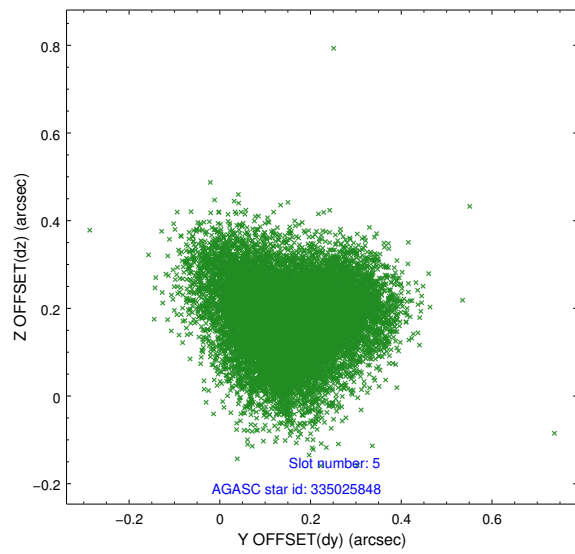
2.4.1 Slot 3



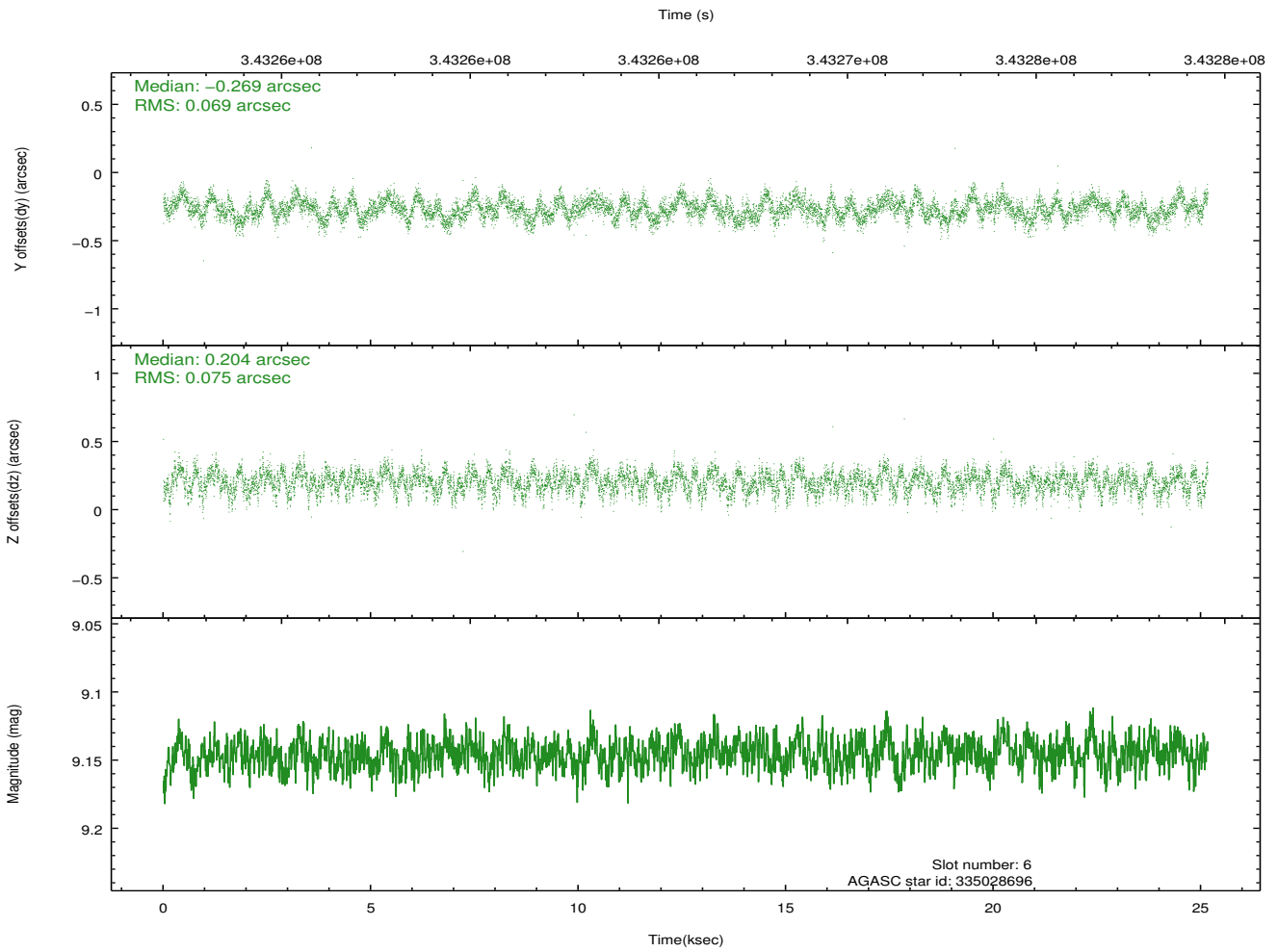
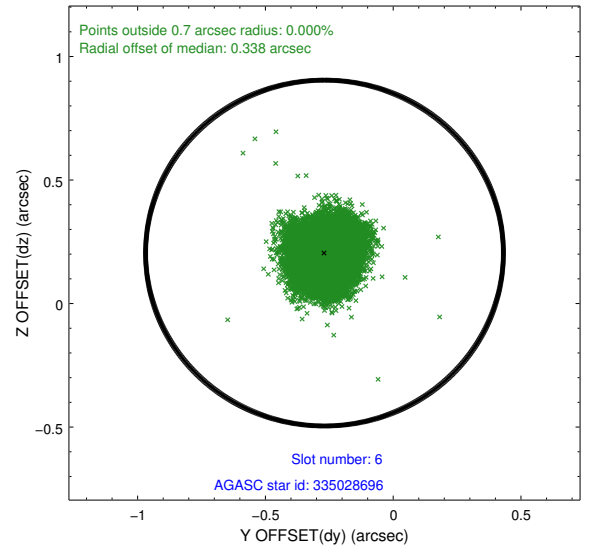
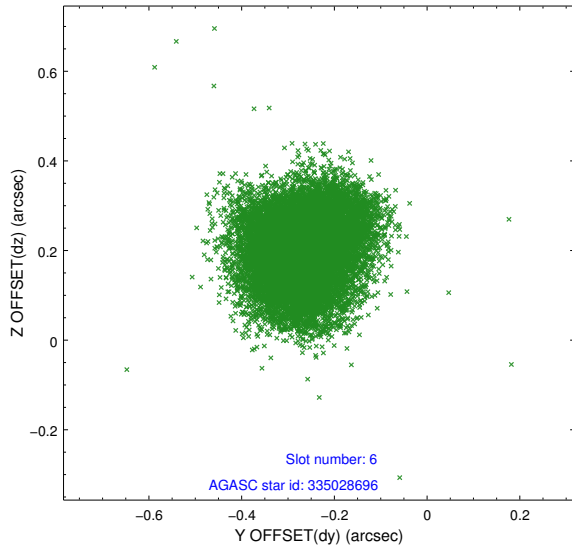
2.4.2 Slot 4



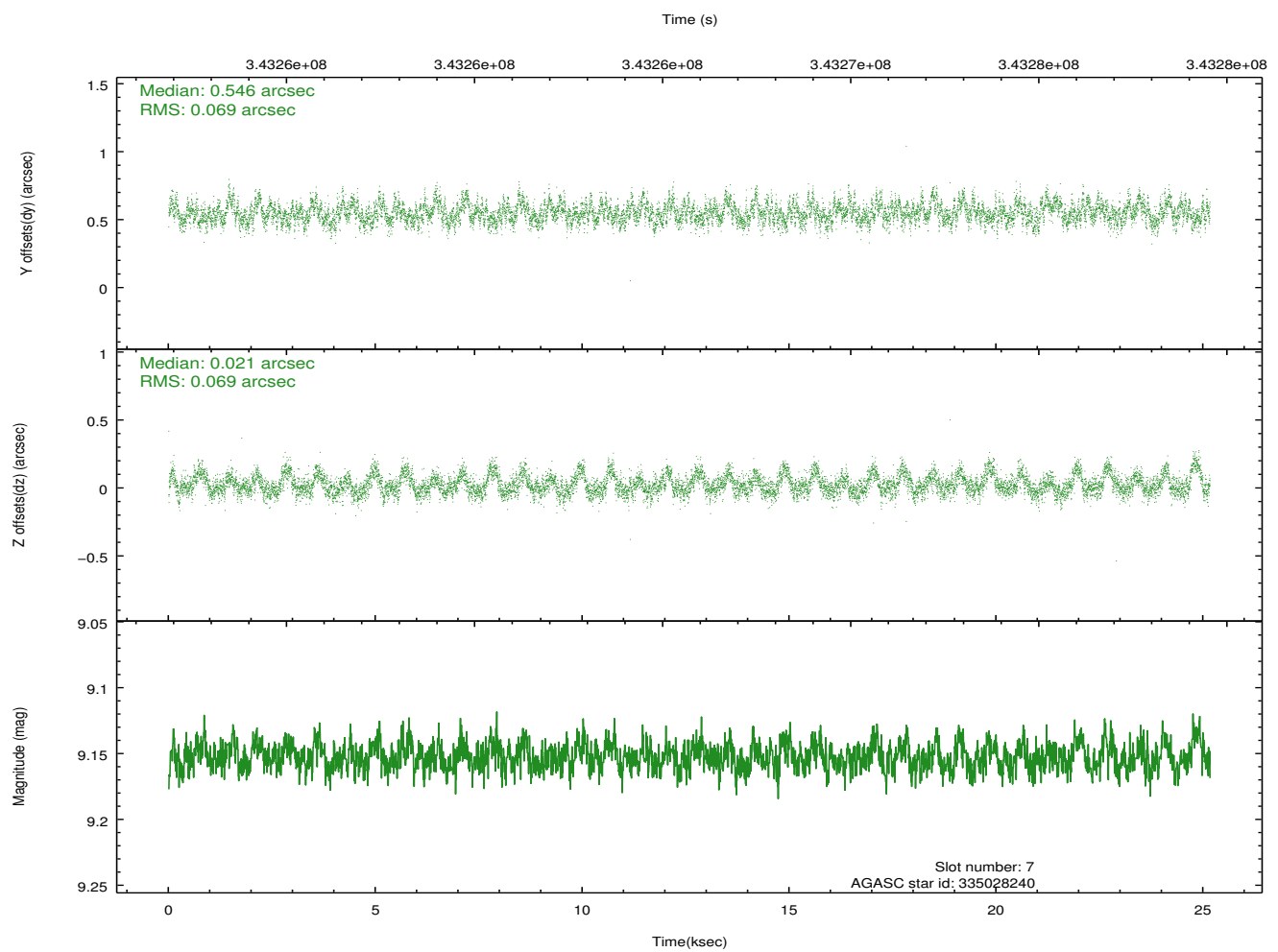
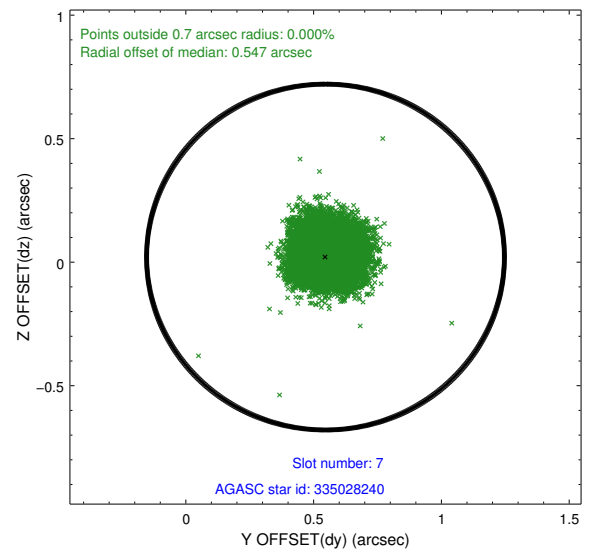
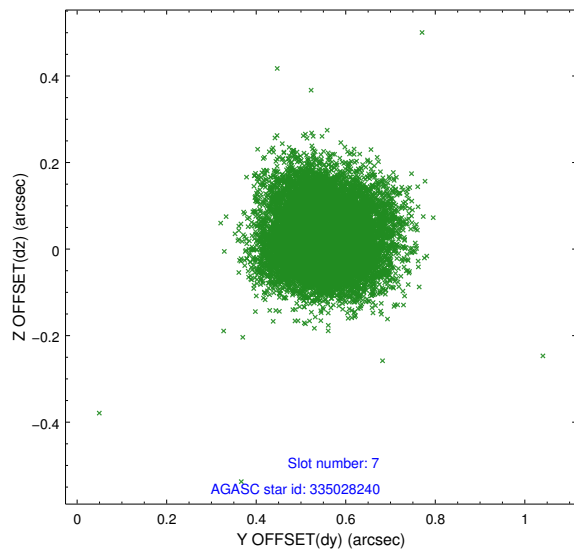
2.4.3 Slot 5



2.4.4 Slot 6

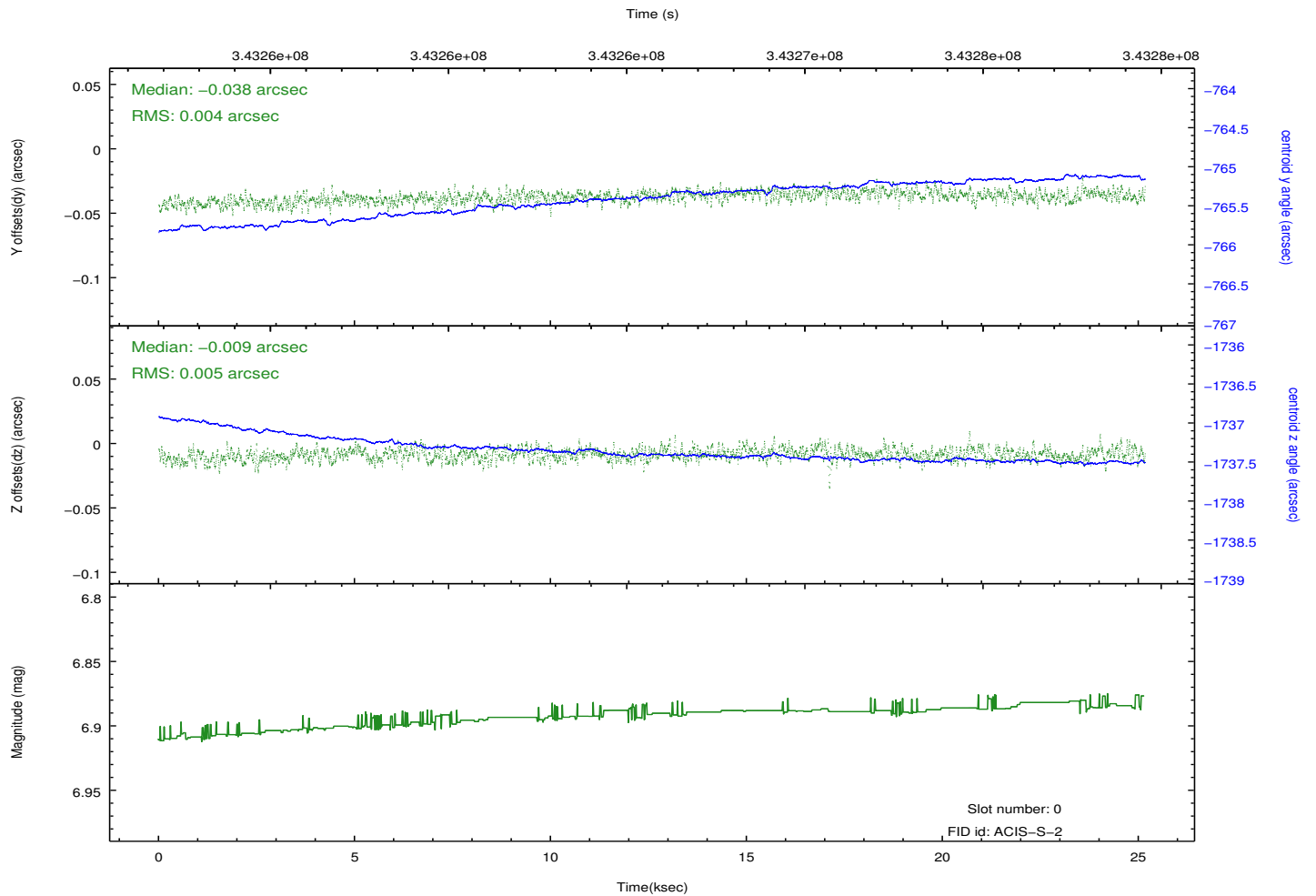
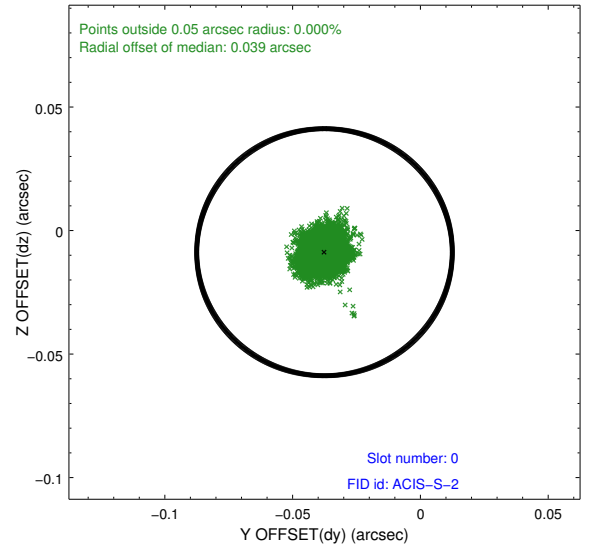
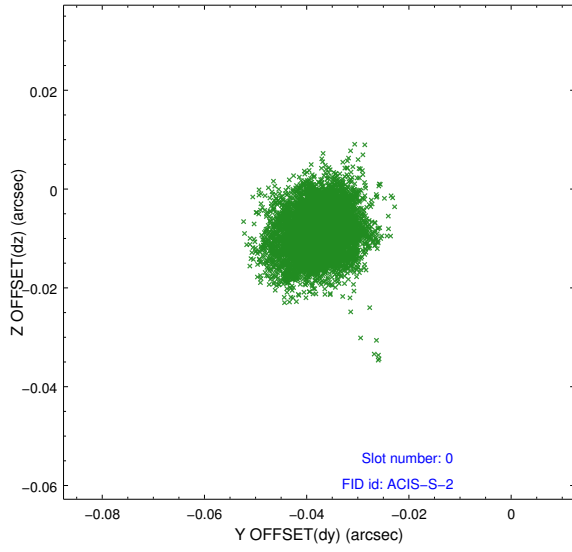


2.4.5 Slot 7

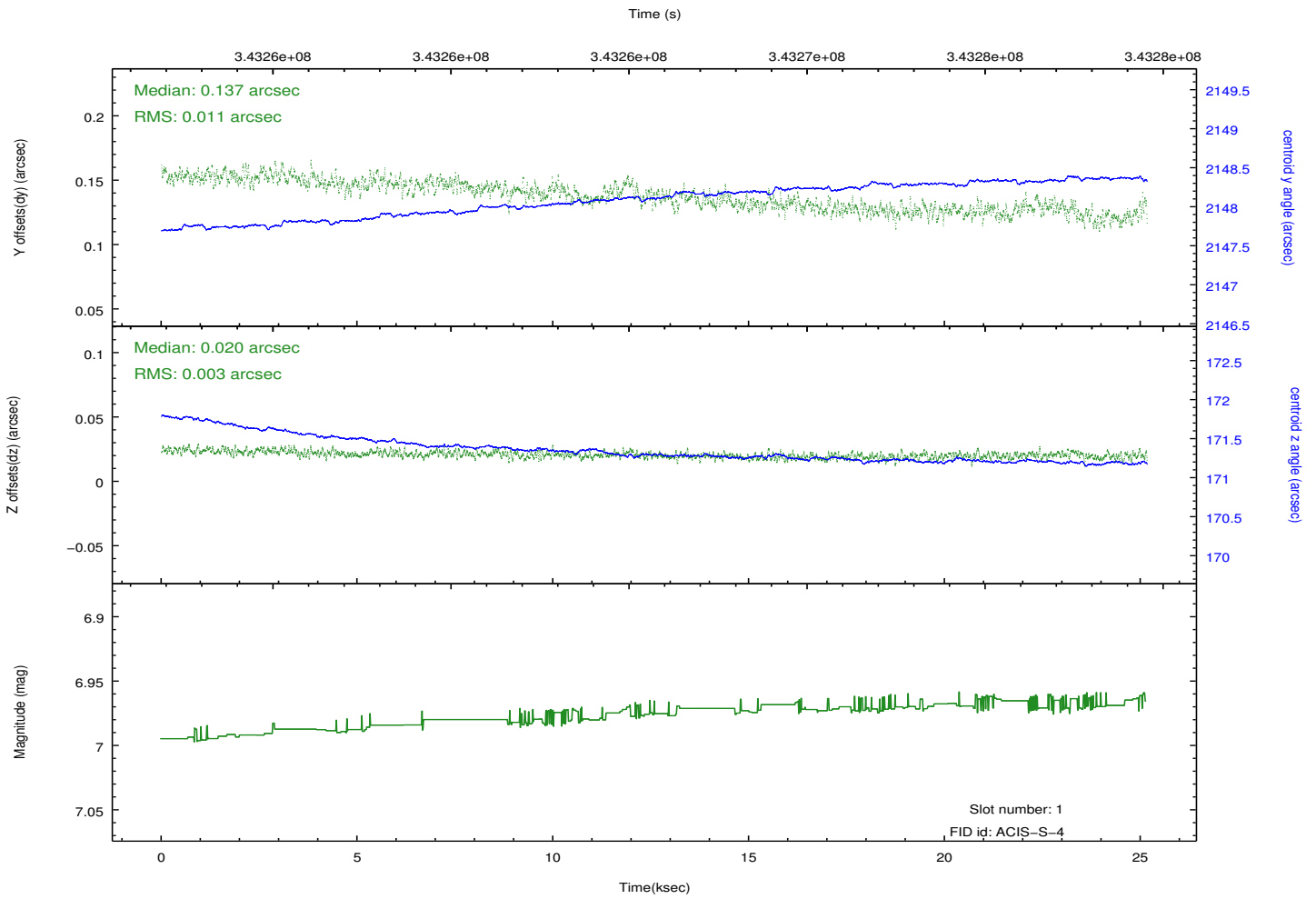
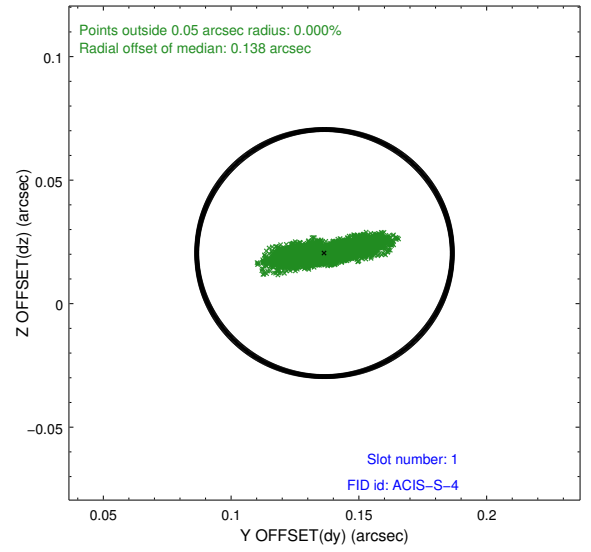
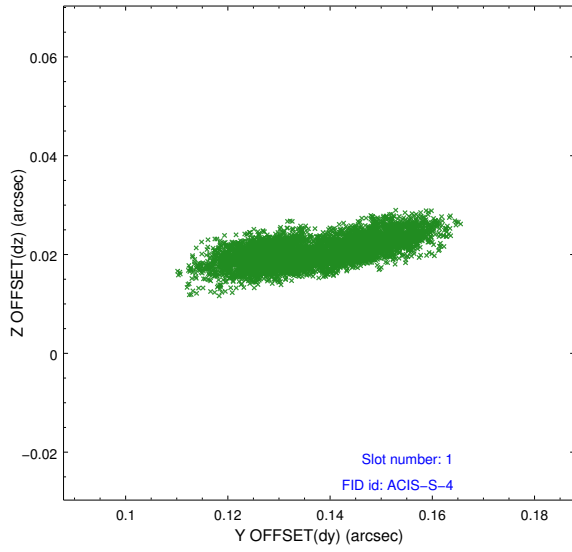


2.5 FID Slots

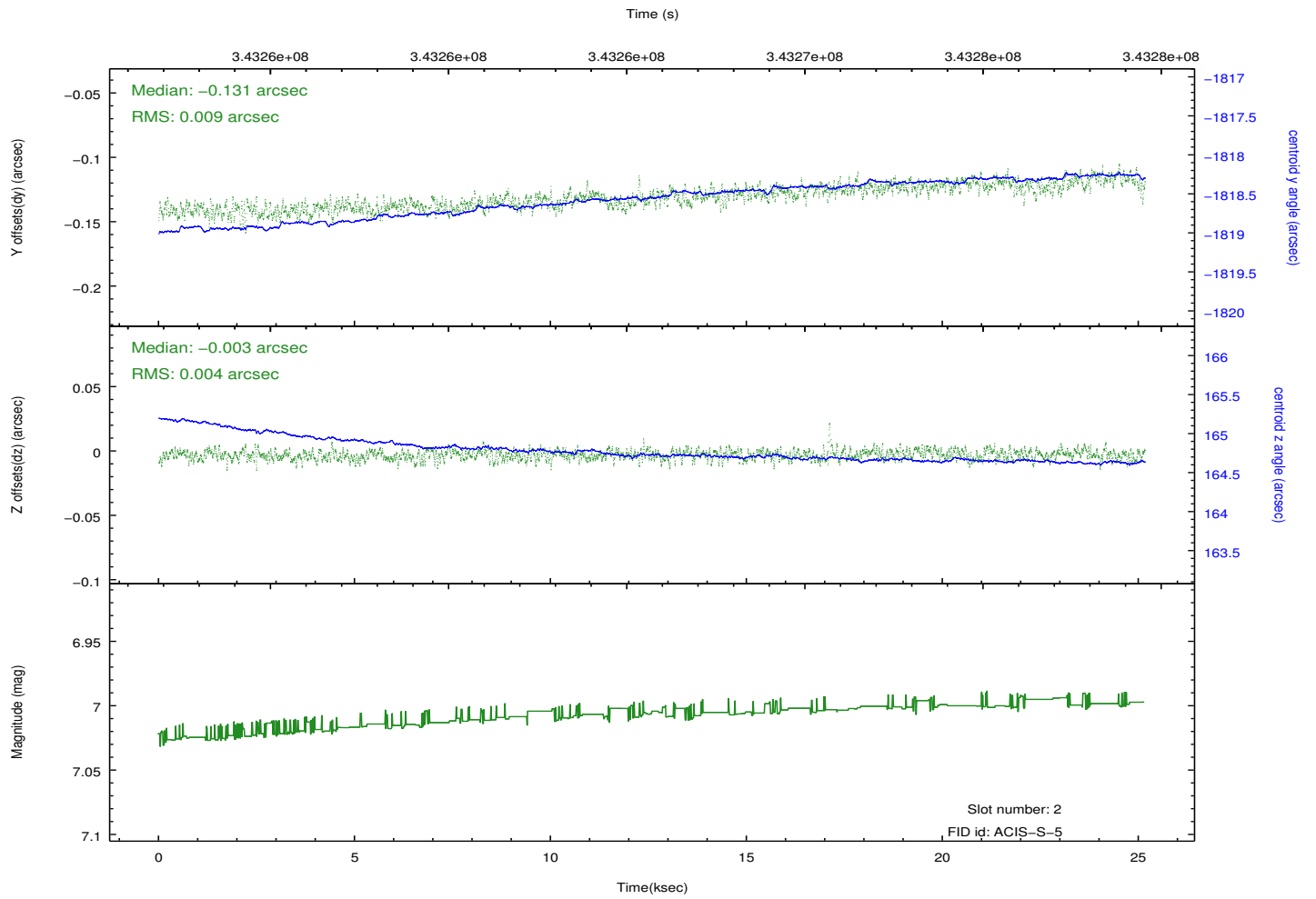
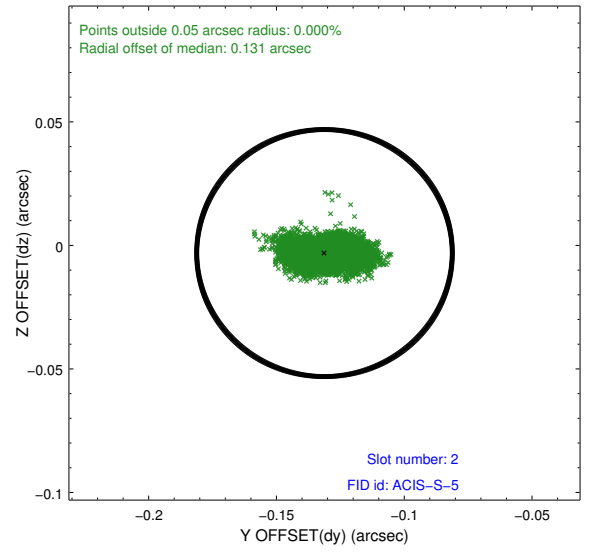
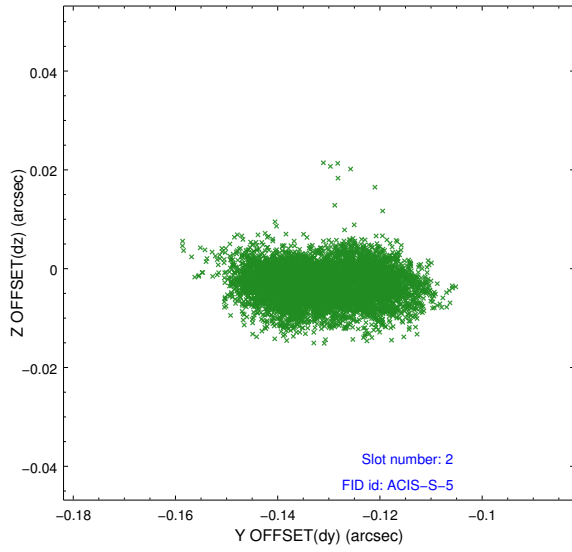
2.5.1 Slot 0



2.5.2 Slot 1



2.5.3 Slot 2



A Summary

A.1 Status

V&V Scientist	Joy Nichols
V&V Date (YYYY-MM-DD)	2012.05.31
V&V Edition	1
V&V Disposition and Status	OK
V&V Charge Time	25.1596001

A.2 Comments