

V&V Reference Report

L2 ASCDS Version : 8.4.4

Observation 9714 - L2 Version 2
Chandra X-Ray Center

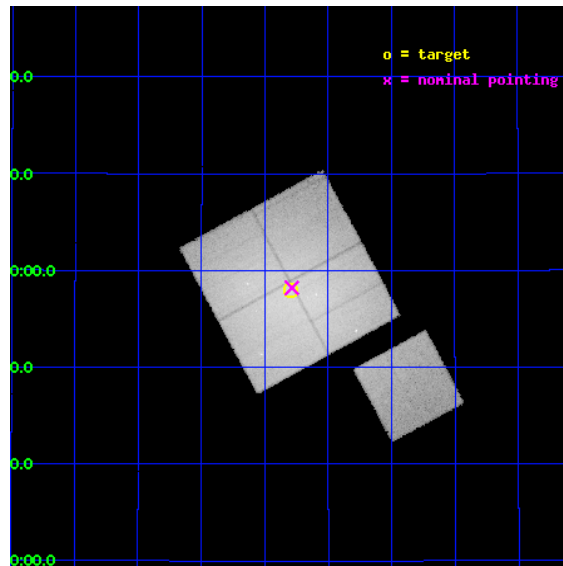
L2 Processing Date : May 12 2012

Contents

1 Front	2
2 OBI	3
2.1 OBI	3
2.1.1 Images	3
2.1.2 Bias	3
2.1.3 Parameters	4
2.1.4 Events	4
2.2 Compared Parameters	5
2.3 Aspect	6
2.4 Star Slots	9
2.4.1 Slot 3	9
2.4.2 Slot 4	10
2.4.3 Slot 5	11
2.4.4 Slot 6	12
2.4.5 Slot 7	13
2.5 FID Slots	14
2.5.1 Slot 0	14
2.5.2 Slot 1	15
2.5.3 Slot 2	16
A Summary	17
A.1 Status	17
A.2 Comments	17

1 Front

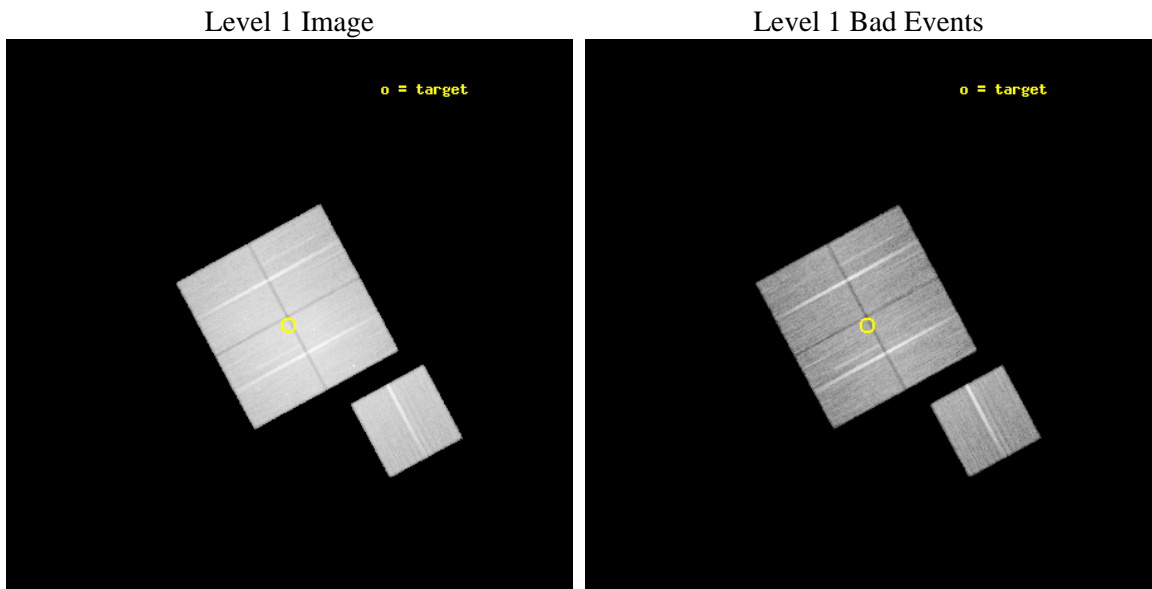
seq_num	890036	Sequence number
obs_id	9714	Observation id
title	Calibration Observation of the Coma Cluster	Proposal title
observer	Dr. CXC Calibration	Principal investigator
object	Coma Cluster	Source name
dtycycle	0	
cycle	P	events from which exps? Prim/Second/Both
ra_targ	194.95	Observer's specified target RA [deg]
dec_targ	27.966667	Observer's specified target Dec [deg]
ra_nom	194.94660074931	Nominal RA [deg]
dec_nom	27.970276849032	Nominal Dec [deg]
roll_nom	151.58620571427	Nominal Roll [deg]
revision	2	Processing version of data
ontime	30042.100231051	Sum of GTIs [s]
livetime	29649.57807486	Livetime [s]
ontime0	30042.100231051	Sum of GTIs [s]
ontime1	30035.818240345	Sum of GTIs [s]
ontime2	30035.818240345	Sum of GTIs [s]
ontime3	30042.100231051	Sum of GTIs [s]
ontime6	30035.818230391	Sum of GTIs [s]
l2events	602942	Number of level 2 events



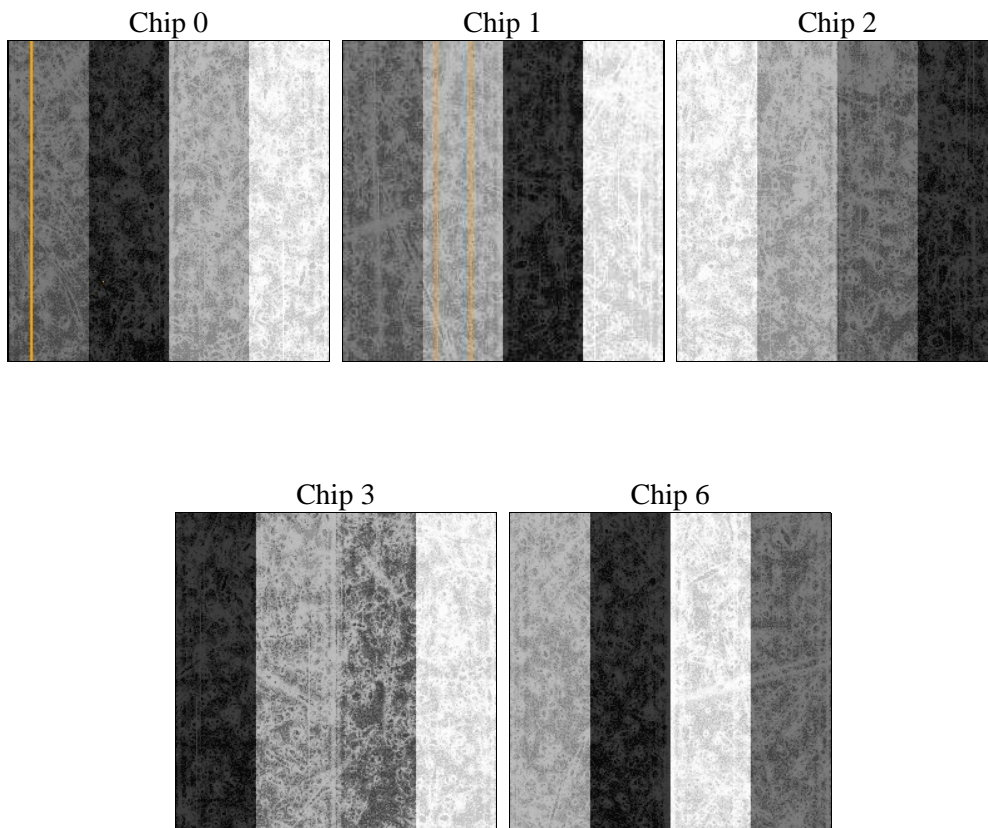
2 OBI

2.1 OBI

2.1.1 Images



2.1.2 Bias



2.1.3 Parameters

obi_num	0	Obi number	sched_exp_time	30000.000000	[s] Scheduled observation exposure time
ascdsver	8.4.4	Processing system revision	ontime	30042.100231051	Sum of GTIs [s]
caldbver	4.4.9	 	ontime0	30042.100231051	Sum of GTIs [s]
date	2012-05-12T01:03:24	Date and time of file creation	ontime1	30035.818240345	Sum of GTIs [s]
revision	2	Processing version of data	ontime2	30035.818240345	Sum of GTIs [s]
			ontime3	30042.100231051	Sum of GTIs [s]
			ontime6	30035.818230391	Sum of GTIs [s]
			l1events	1695677	Number of level 1 events

2.1.4 Events

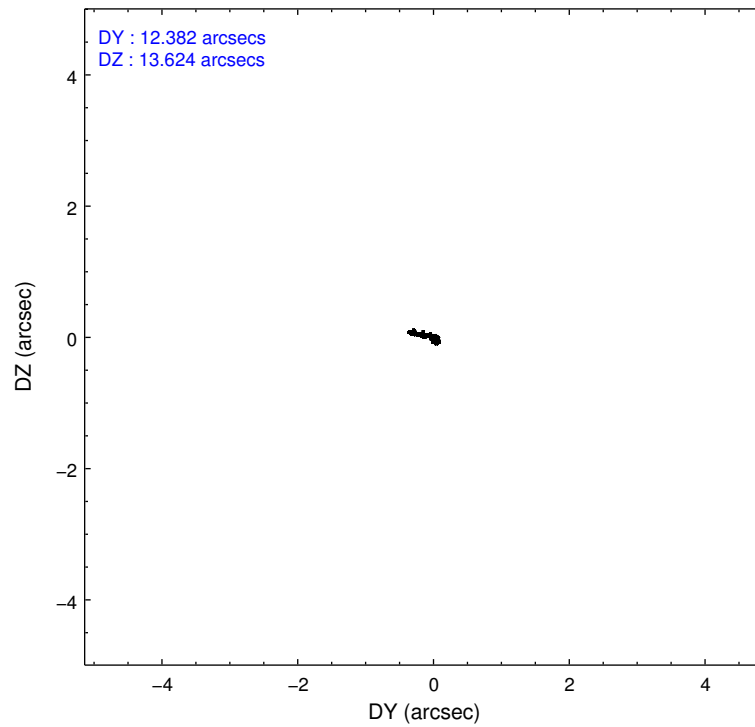
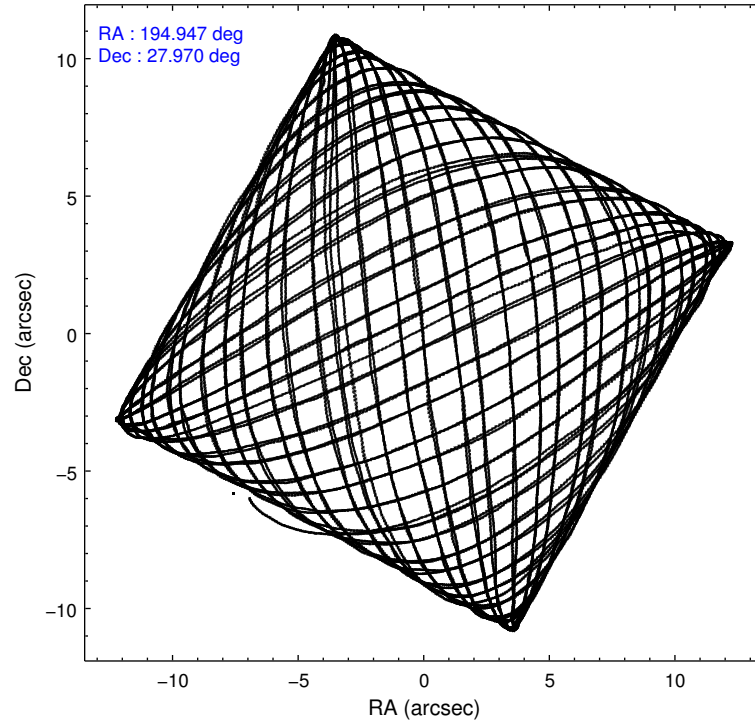
	ccd 0	ccd 1	ccd 2	ccd 3	ccd 6
level 1 events	301446	324902	403585	398789	266955
rejected events	202301	188417	229114	215139	208358
rejected %	67%	57%	56%	53%	78%

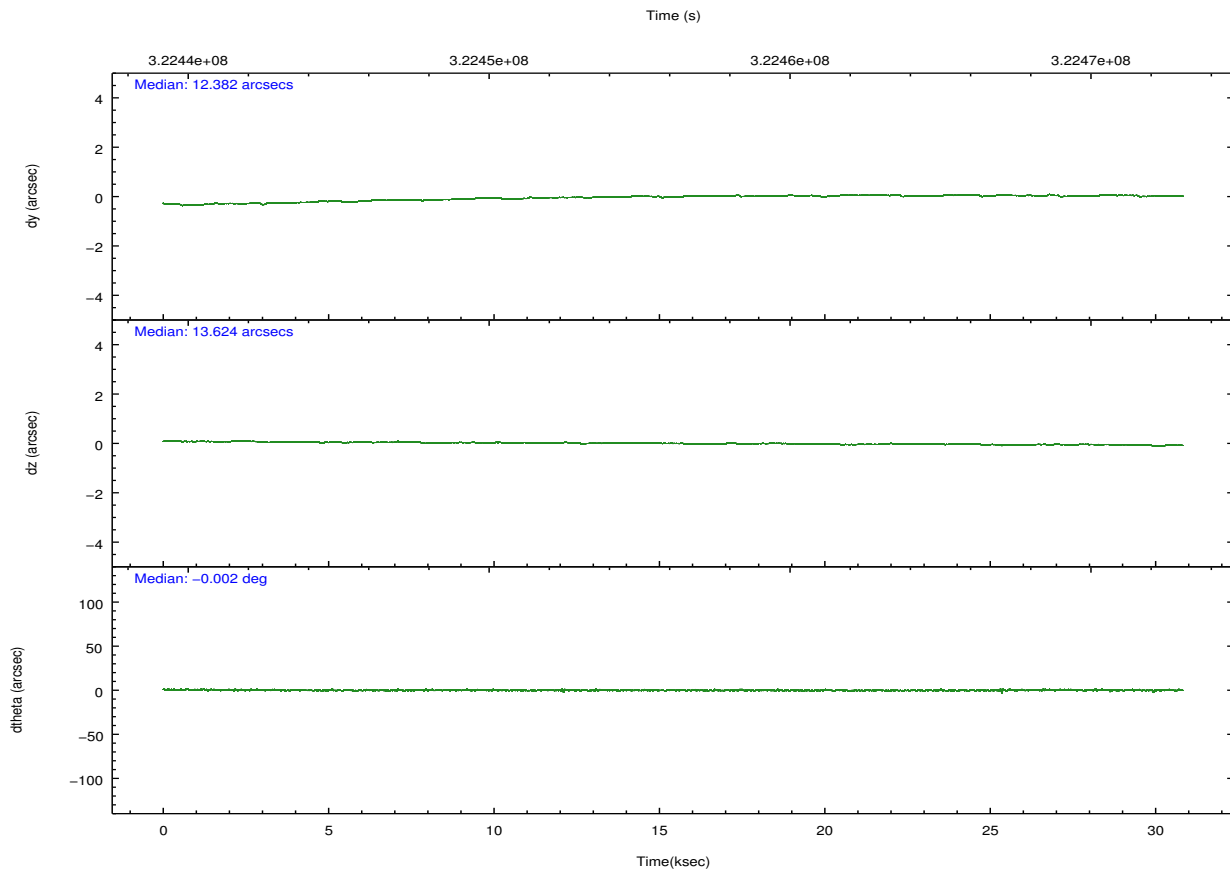
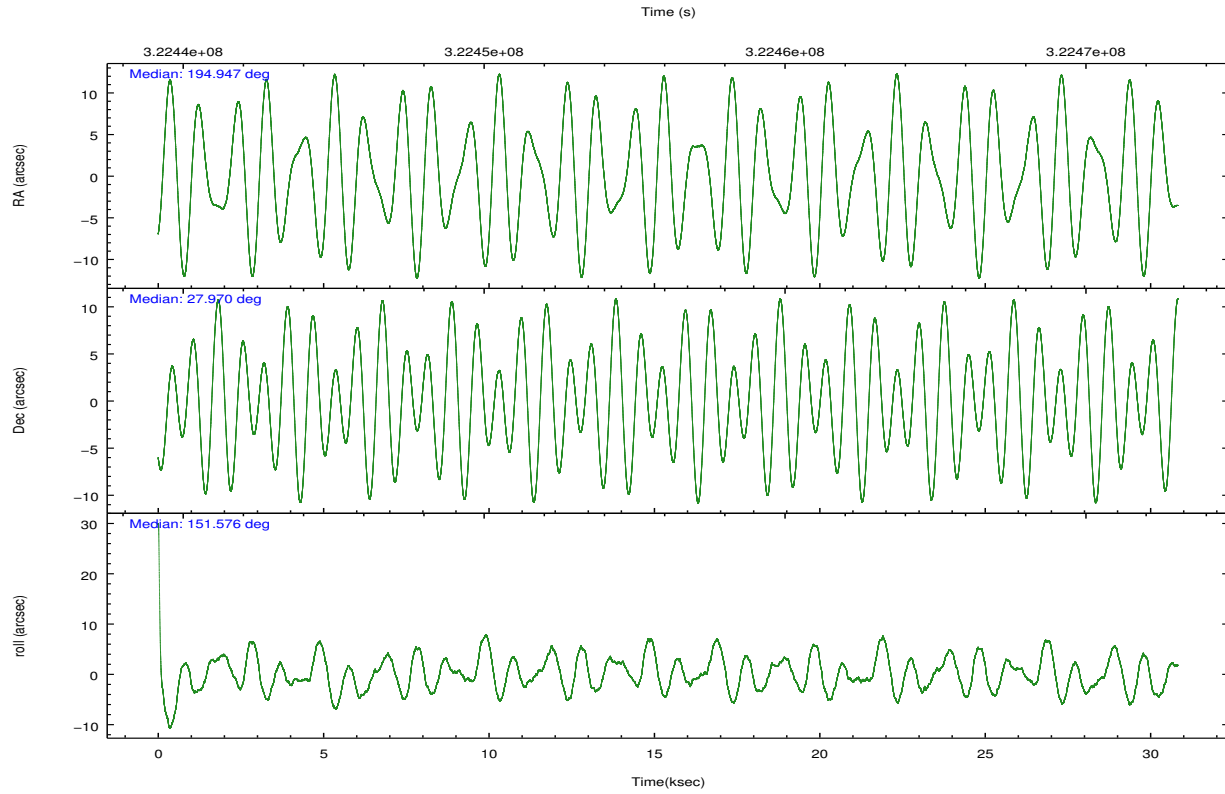
	ccd 0	ccd 1	ccd 2	ccd 3	ccd 6
grade 0 events	69697	99113	132027	139723	37463
	23%	30%	32%	35%	14%
grade 1 events	444	506	940	974	266
	0%	0%	0%	0%	0%
grade 2 events	13335	17001	20003	20785	8598
	4%	5%	4%	5%	3%
grade 3 events	4949	6185	7144	7402	3509
	1%	1%	1%	1%	1%
grade 4 events	4790	6232	7332	7378	3459
	1%	1%	1%	1%	1%
grade 5 events	7267	7971	7223	8848	7716
	2%	2%	1%	2%	2%
grade 6 events	6392	7990	7982	8381	5586
	2%	2%	1%	2%	2%
grade 7 events	194572	179904	220934	205298	200358
	64%	55%	54%	51%	75%

2.2 Compared Parameters

Parameter	Planned	Actual	Parameter	Planned	Actual
Instrument	ACIS	ACIS	Obspar format version number	7	7
Detector	ACIS-01236	ACIS-01236	Obspar file type	PREDICTED	ACTUAL
Grating	NONE	NONE	Obspar update status	NONE	UPDATED
Data mode	VFAINT	VFAINT	CCD I0 on	Y	Y
Observation mode	POINTING	POINTING	CCD I1 on	Y	Y
[deg] Pointing RA	194.977717	194.946600749309	CCD I2 on	Y	Y
[deg] Pointing Dec	27.971158	27.97027684903176	CCD I3 on	Y	Y
[deg] Pointing Roll	151.362931	151.5862057142669	CCD S0 on	N	N
[s] Window start time (MET)	318211265.184000	318211265.184000	CCD S1 on	N	N
[s] Window stop time (MET)	325900865.184000	325900865.184000	CCD S2 on	O1	Y
[mm] SIM focus pos	-0.782348	-0.7809083437167272	CCD S3 on	N	N
[mm] SIM defocus	0	0.001439871863259334	CCD S4 on	N	N
[mm] SIM translation stage pos	-233.592463	-233.5874344608287	CCD S5 on	N	N
[mm] SIM translation stage offset	0	-0.005018542100998502	Number of optional ACIS chips dropped	0	0
[s] Observation start time (MET)	322441529.184000	322440279.55058	On-chip summing requested	N	N
Observation start date	2008-03-20T23:04:24	2008-03-20T22:44:39	Subarray requested	NONE	NONE
[s] Observation end time (MET)	322471529.184000	322472093.50213	Alternating exposures requested	N	N
Observation end date	2008-03-21T07:24:24	2008-03-21T07:34:53	[s] Primary exposure time	0.000000	3.1
Read mode	TIMED	TIMED			

2.3 Aspect



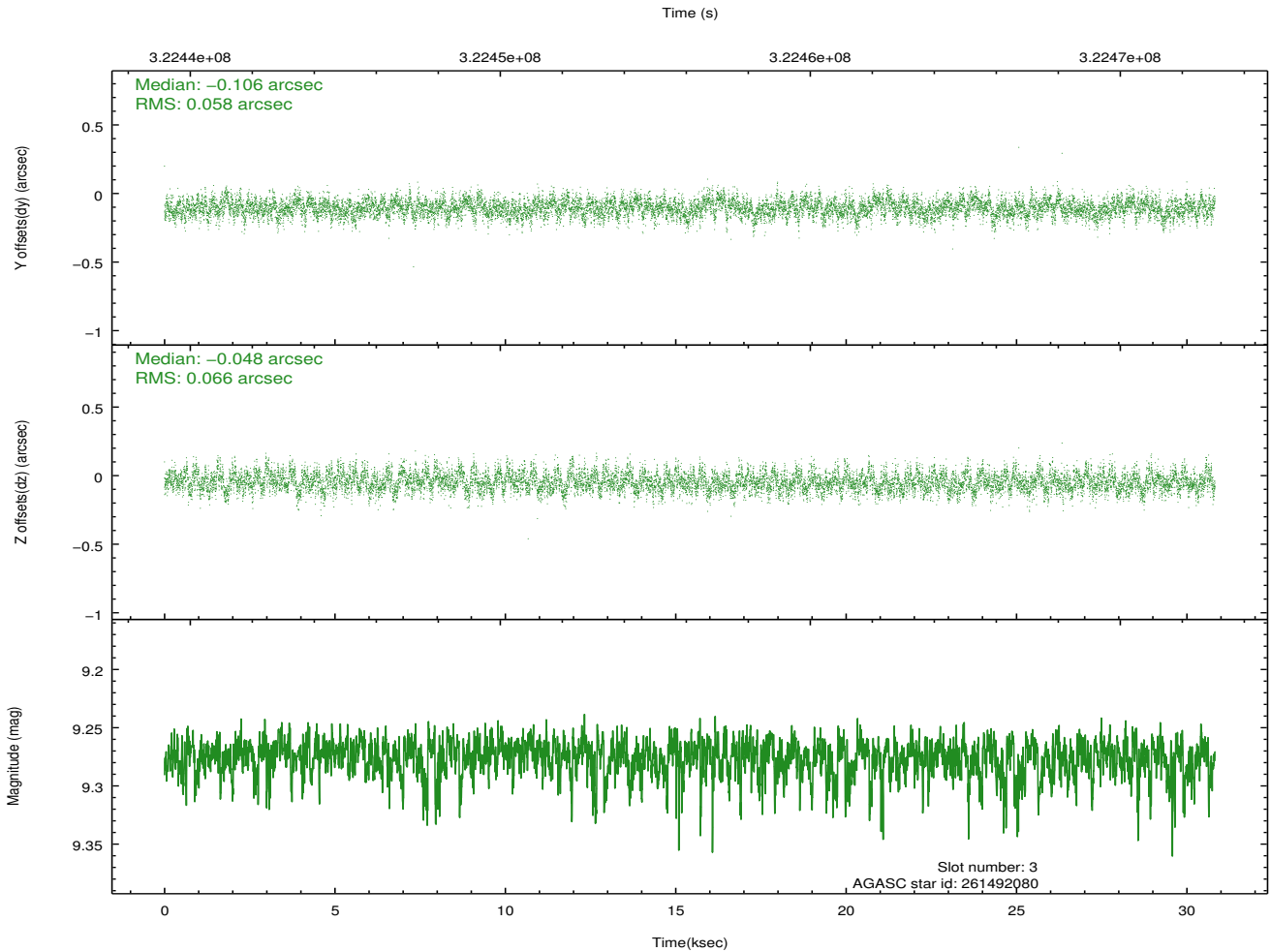
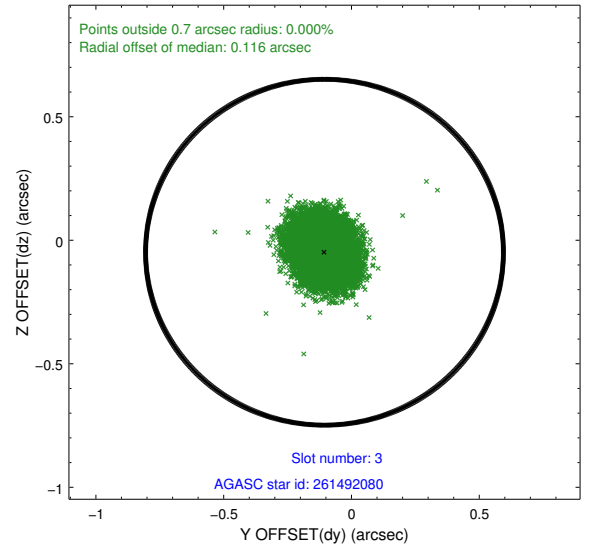
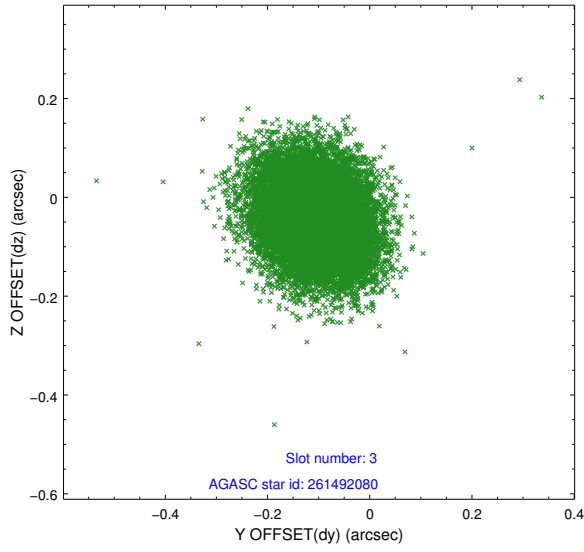


Slot Statistics

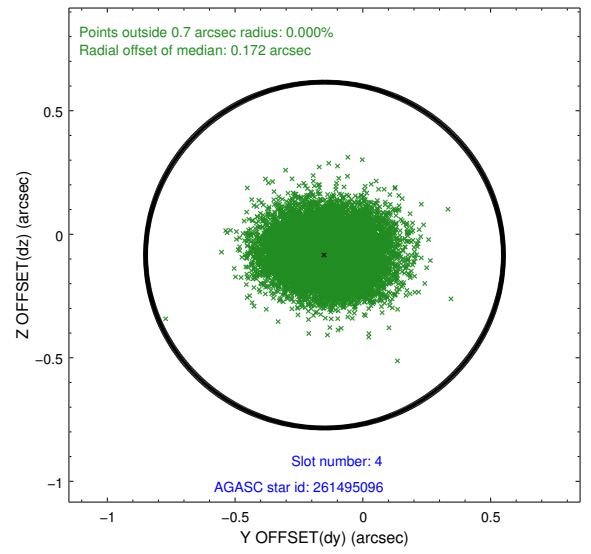
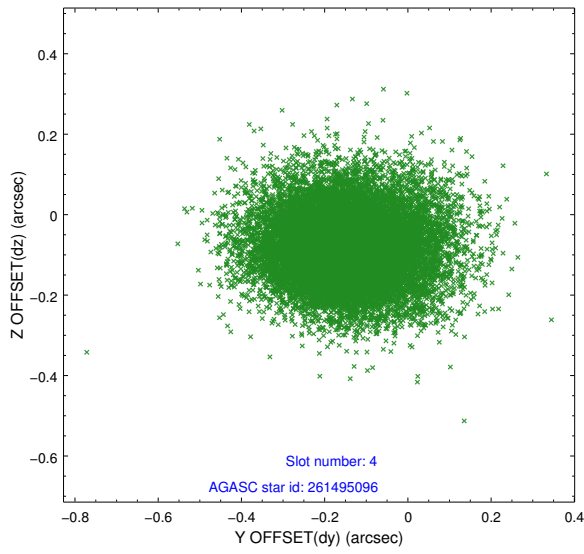
slot	status	id	mag	n_pts	med_dy	med_dz	dr1	dr2	ra	dec	mean_y	mean_z
0	FID	ACIS-I-1	7.23	7518	0.032	0.012	0.007	0.012	0.000000	0.000000	927.25	-837.17
1	FID	ACIS-I-5	7.22	7519	-0.188	0.048	0.007	0.011	0.000000	0.000000	-1821.05	1060.31
2	FID	ACIS-I-6	7.24	7518	0.064	0.011	0.007	0.011	0.000000	0.000000	392.74	1704.86
3	GUIDE	261492080	9.27	15018	-0.106	-0.048	0.093	0.153	194.976344	28.631585	1144.05	-2084.45
4	GUIDE	261495096	9.91	15018	-0.150	-0.084	0.148	0.249	194.411078	28.430653	2370.02	-595.33
5	GUIDE	261498392	8.30	15033	0.700	0.368	0.072	0.114	194.888587	28.238913	711.59	-710.13
6	GUIDE	261502496	7.35	15037	-0.342	-0.066	0.080	0.127	194.887297	28.065668	415.45	-161.05
7	GUIDE	261505232	9.79	15021	-0.100	-0.167	0.155	0.251	194.216553	27.802521	1839.48	1688.57

2.4 Star Slots

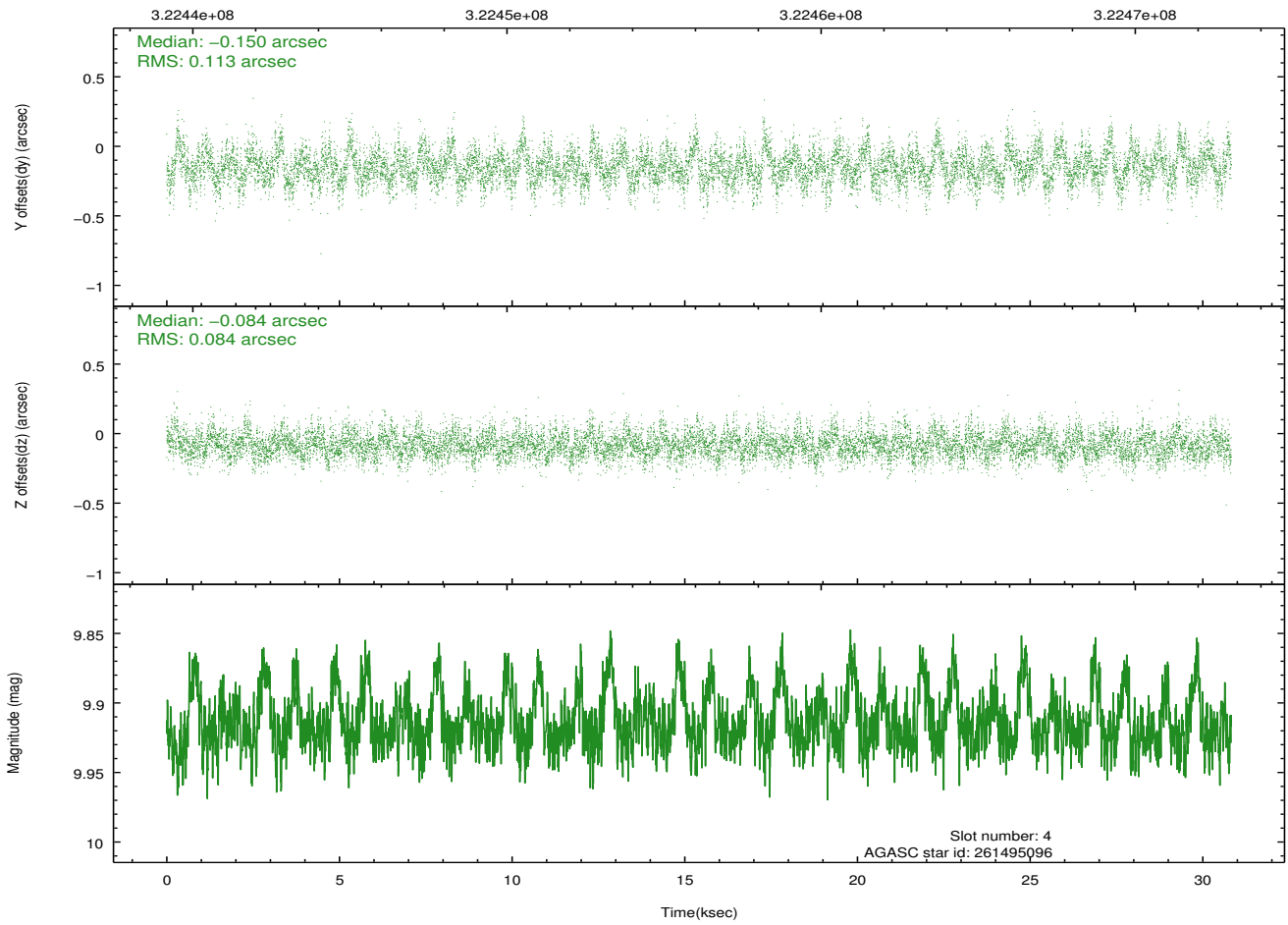
2.4.1 Slot 3



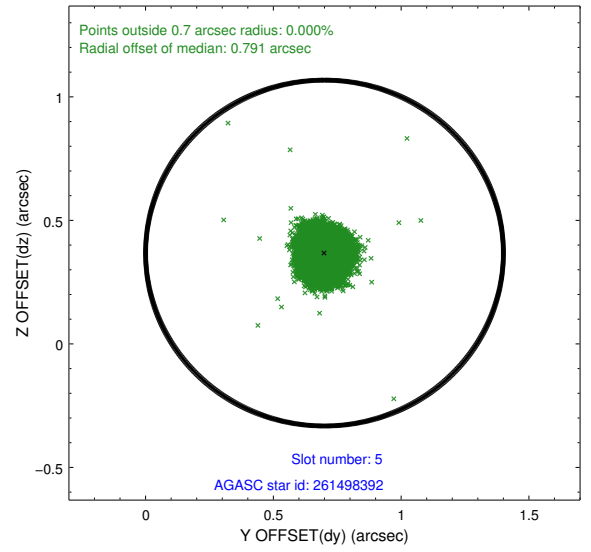
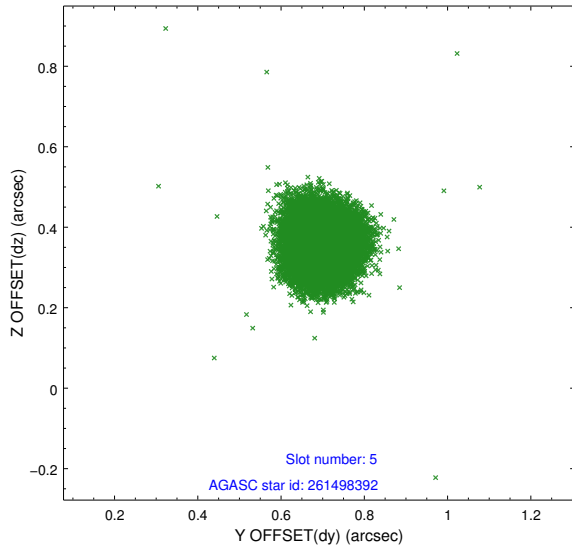
2.4.2 Slot 4



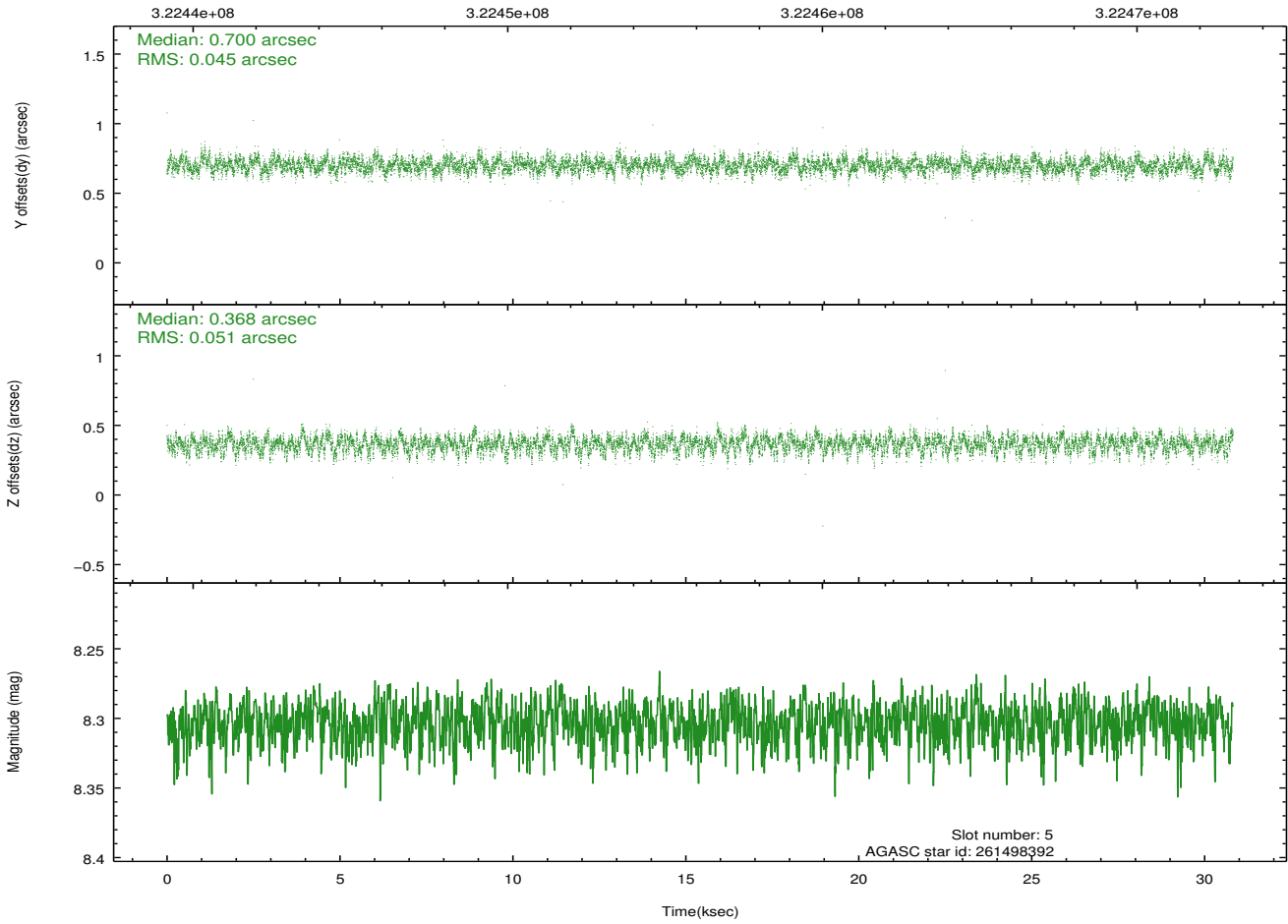
Time (s)



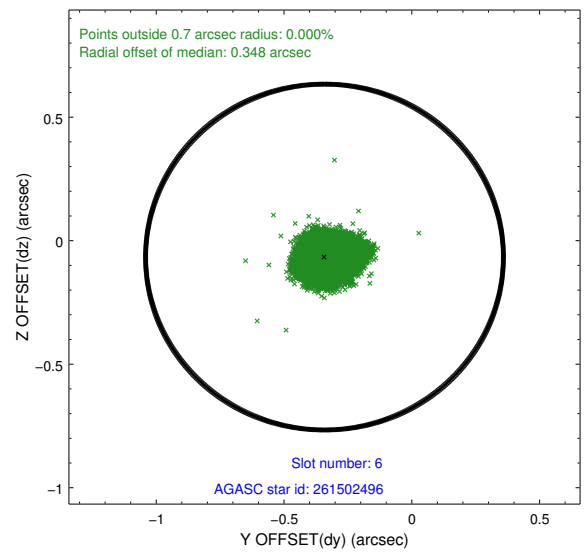
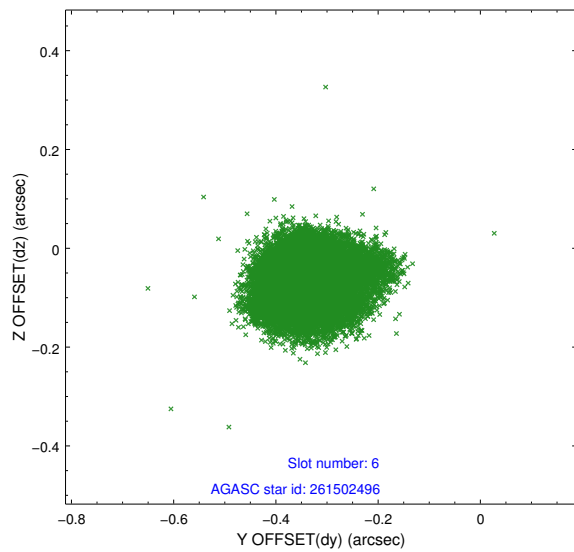
2.4.3 Slot 5



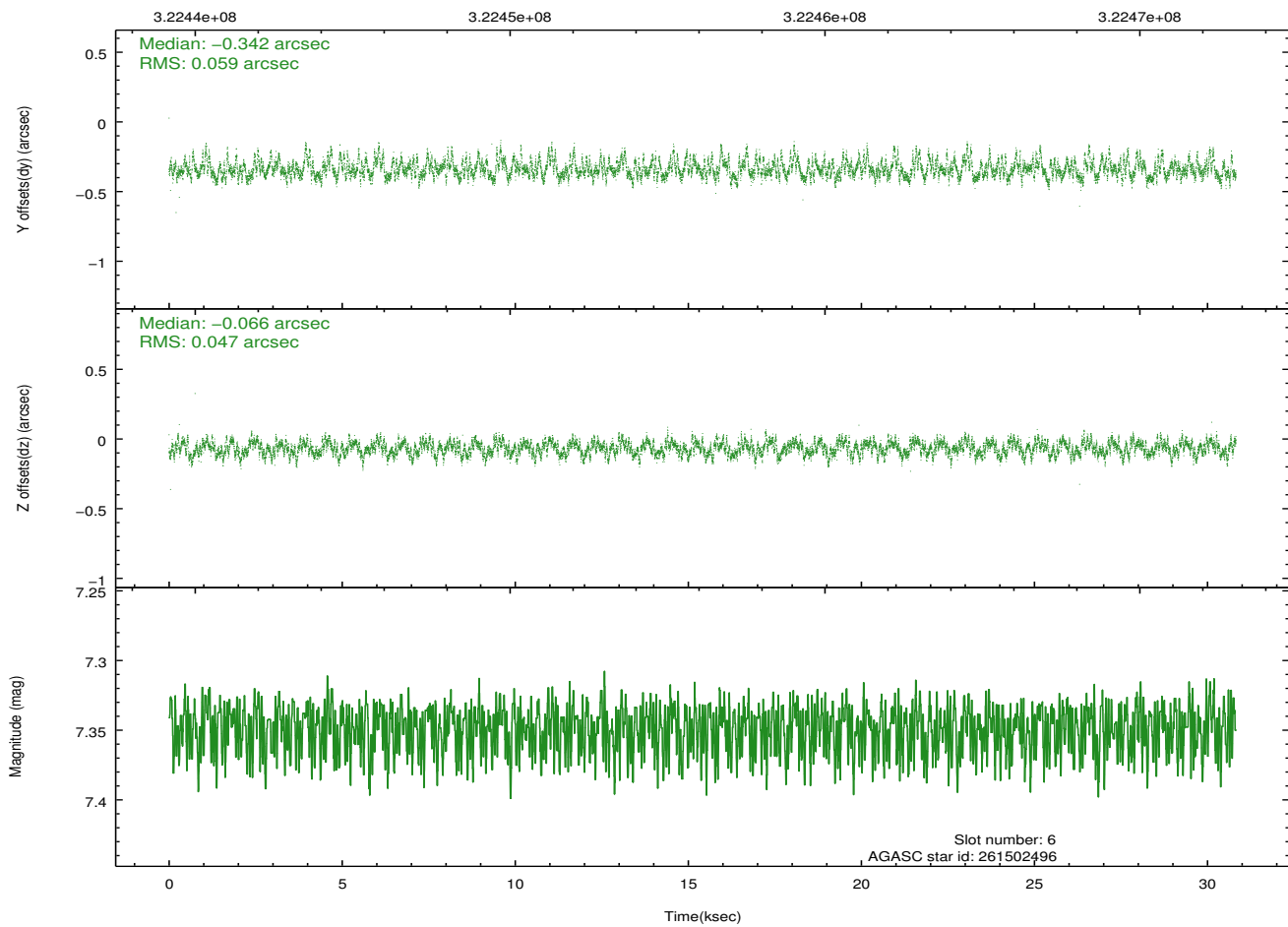
Time (s)



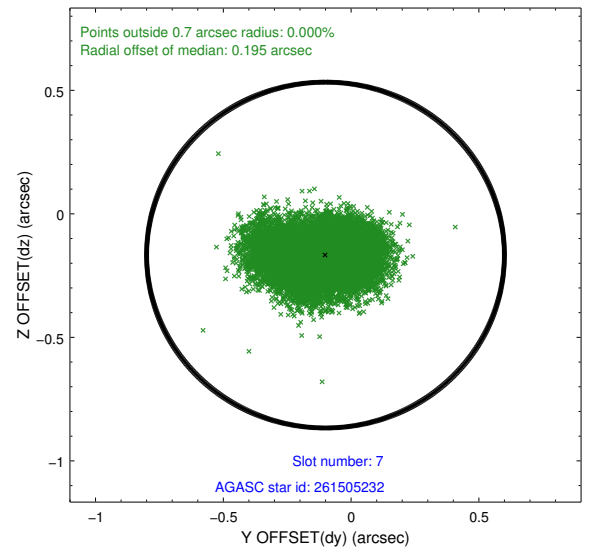
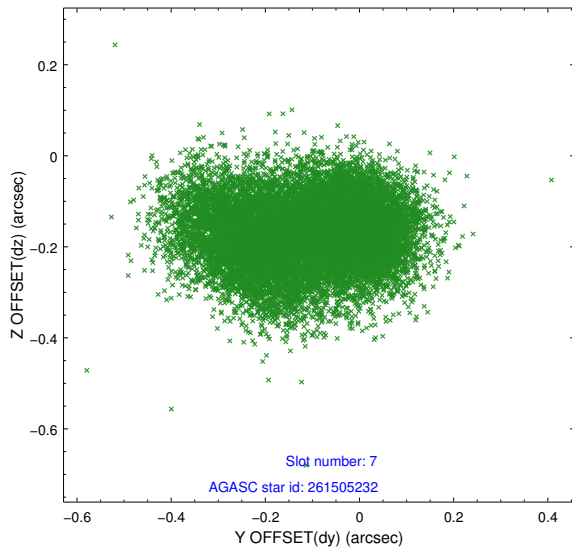
2.4.4 Slot 6



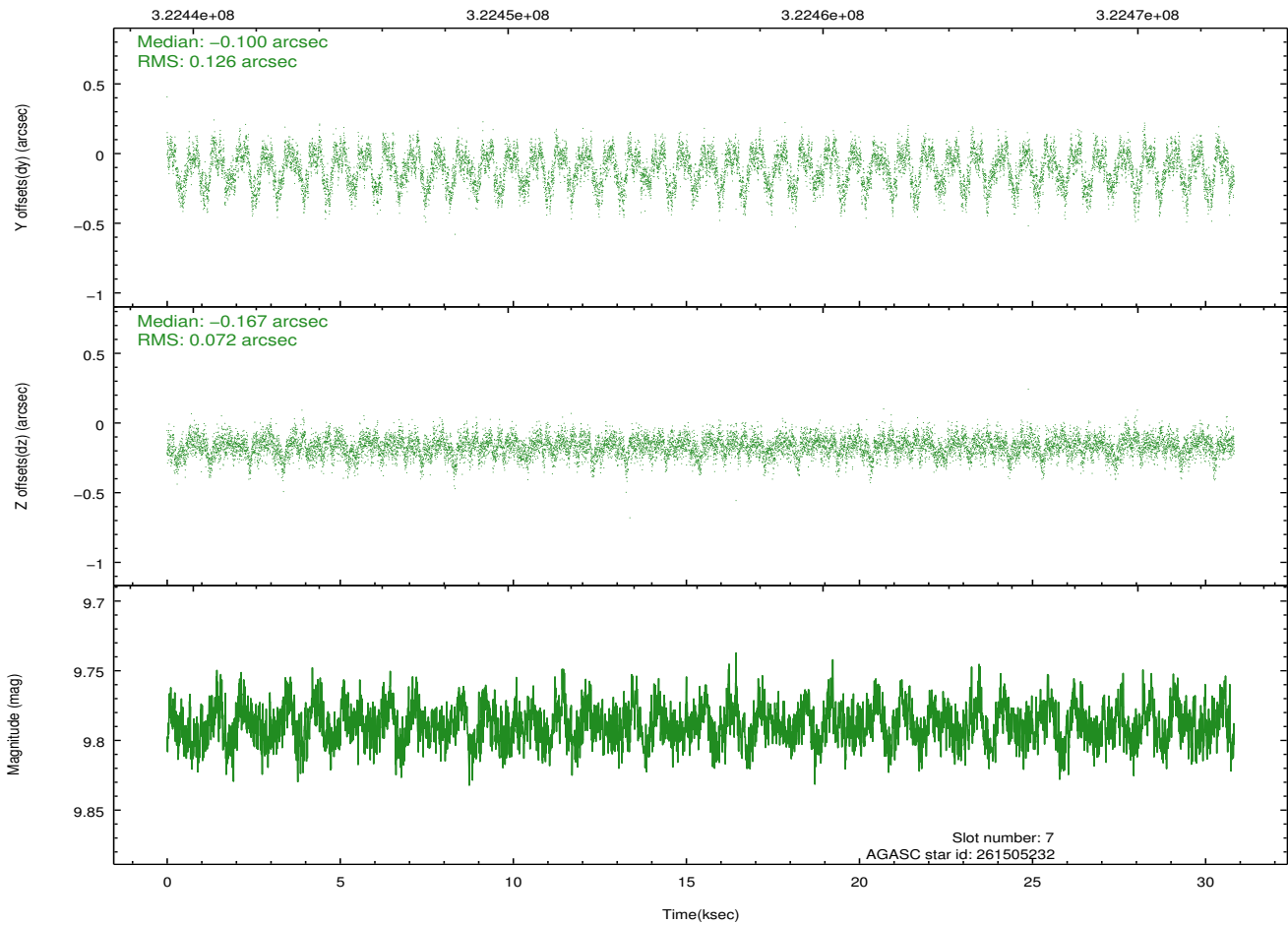
Time (s)



2.4.5 Slot 7

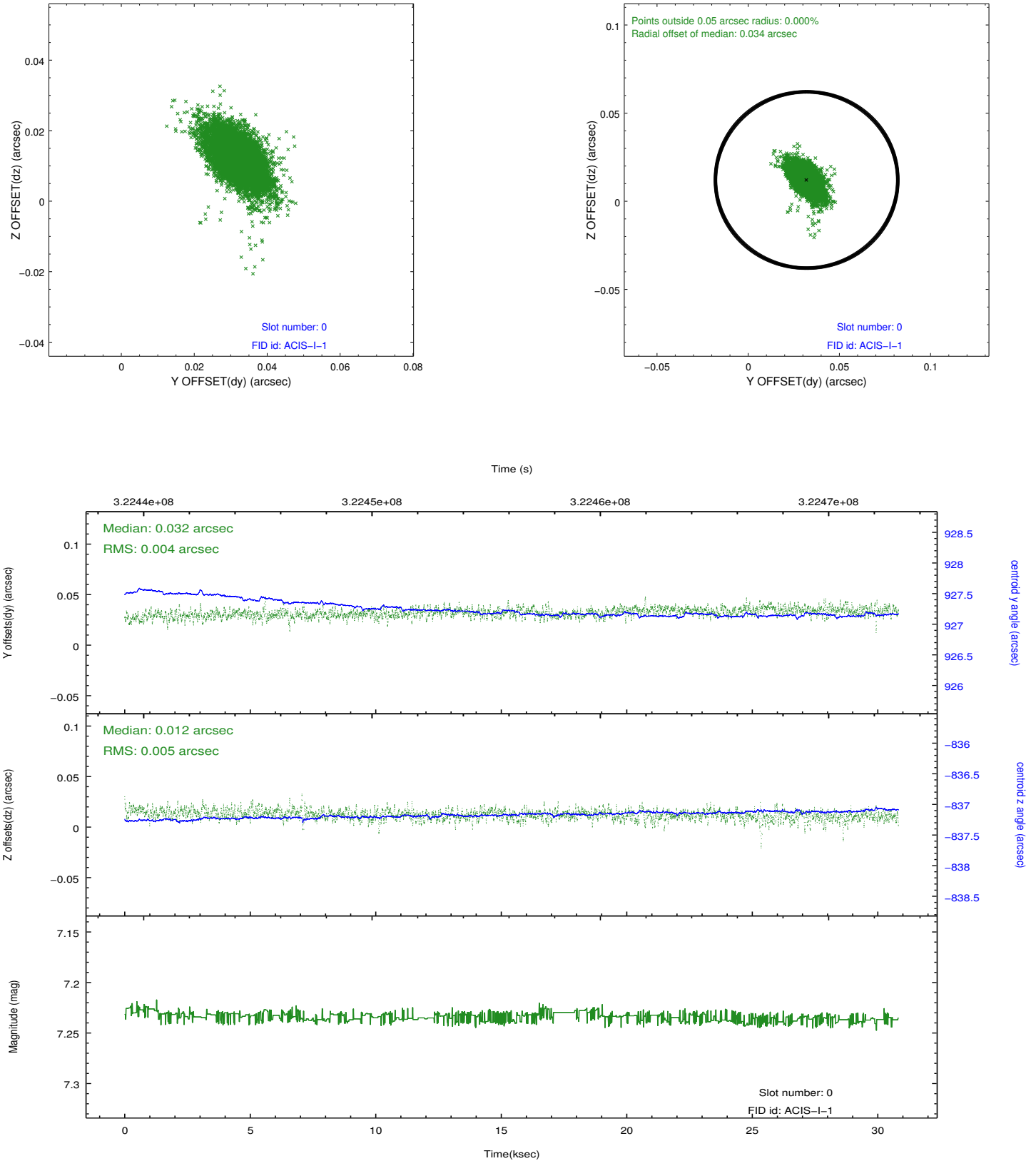


Time (s)

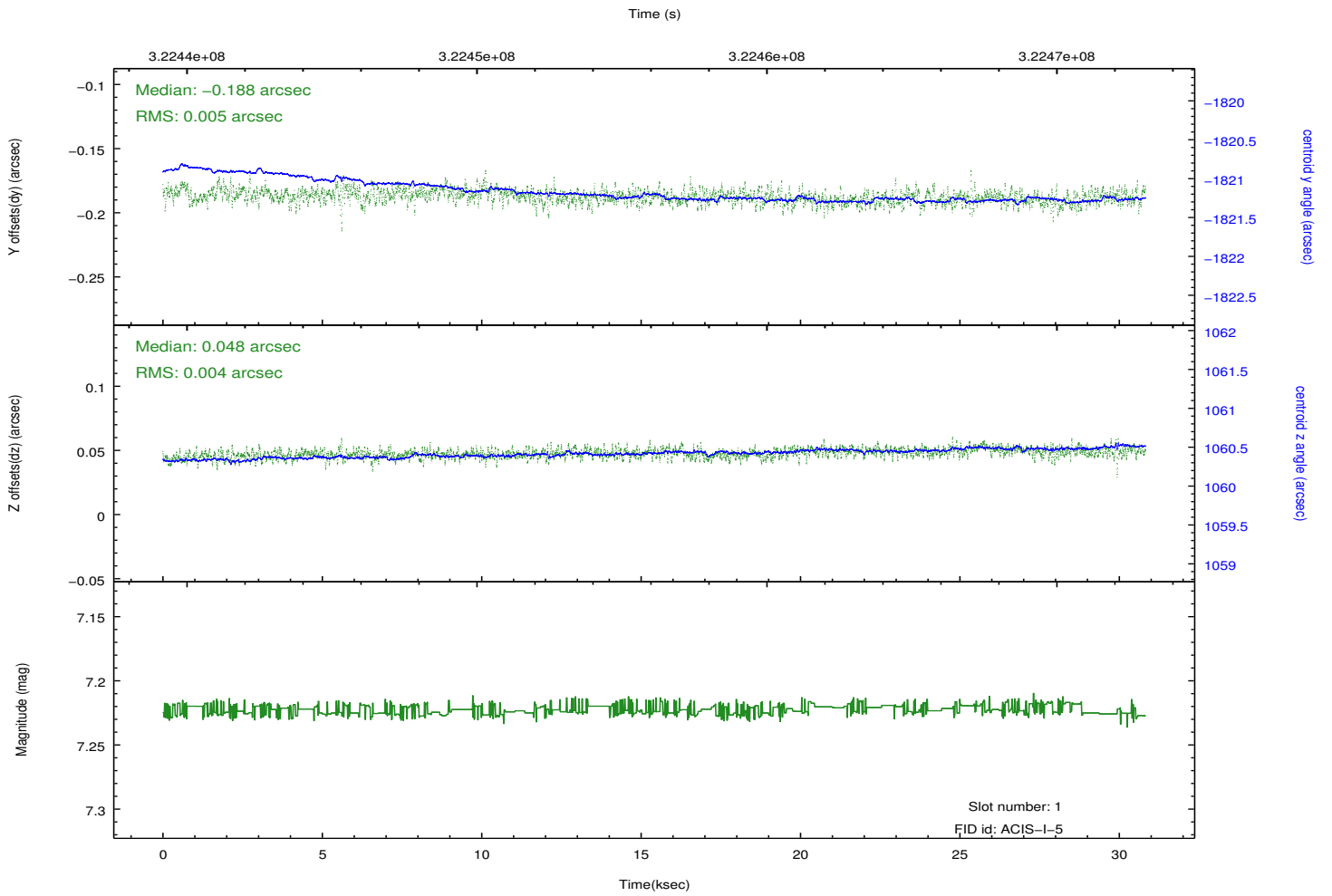
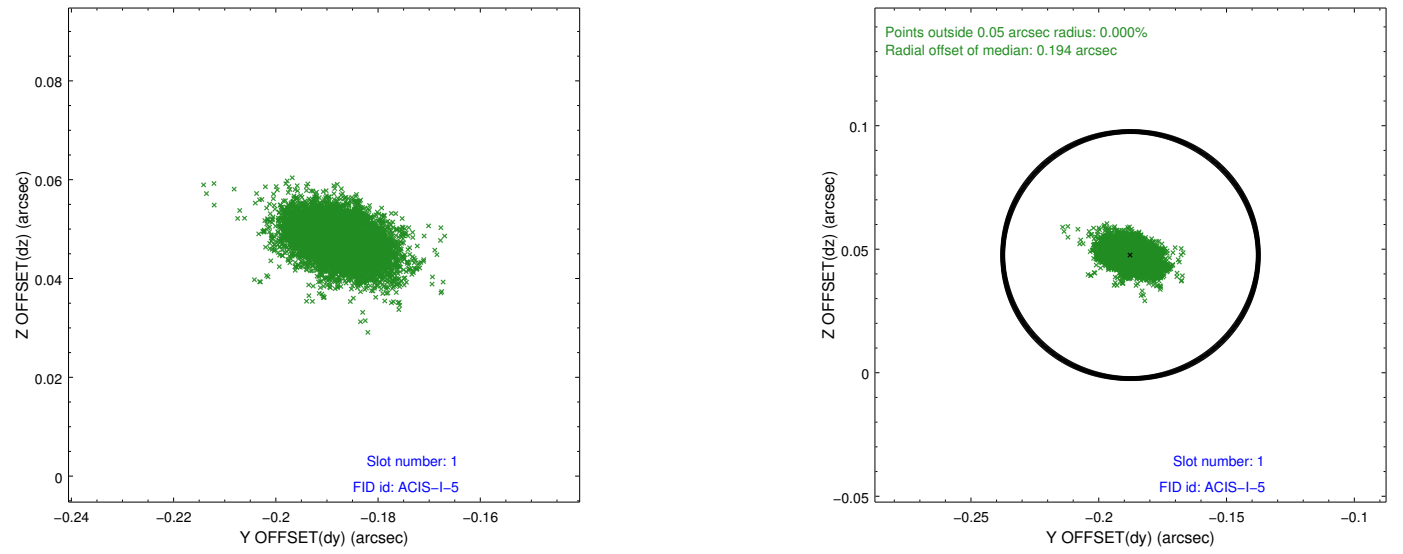


2.5 FID Slots

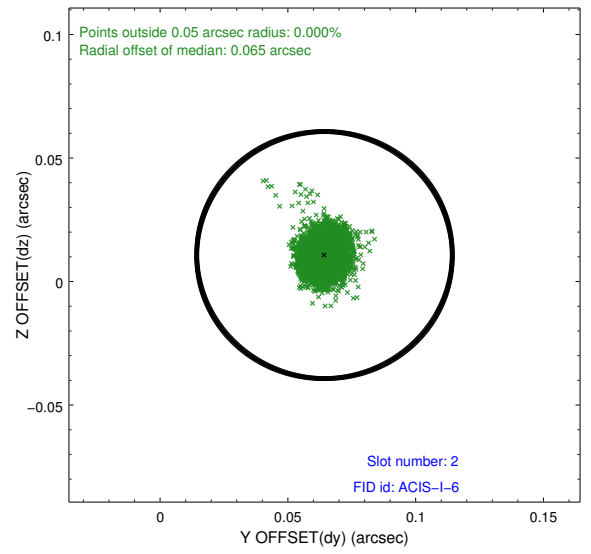
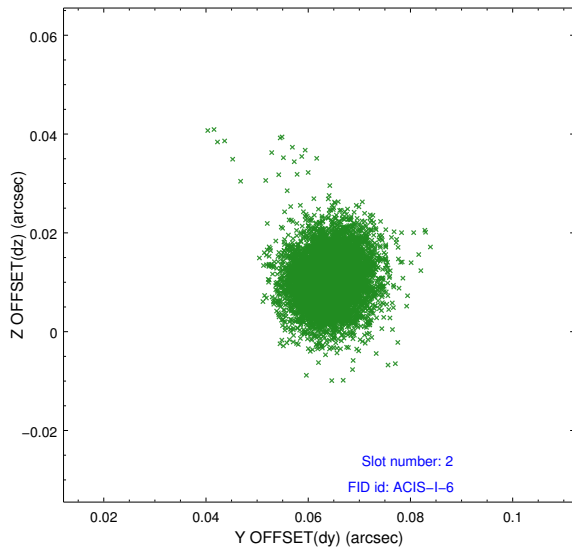
2.5.1 Slot 0



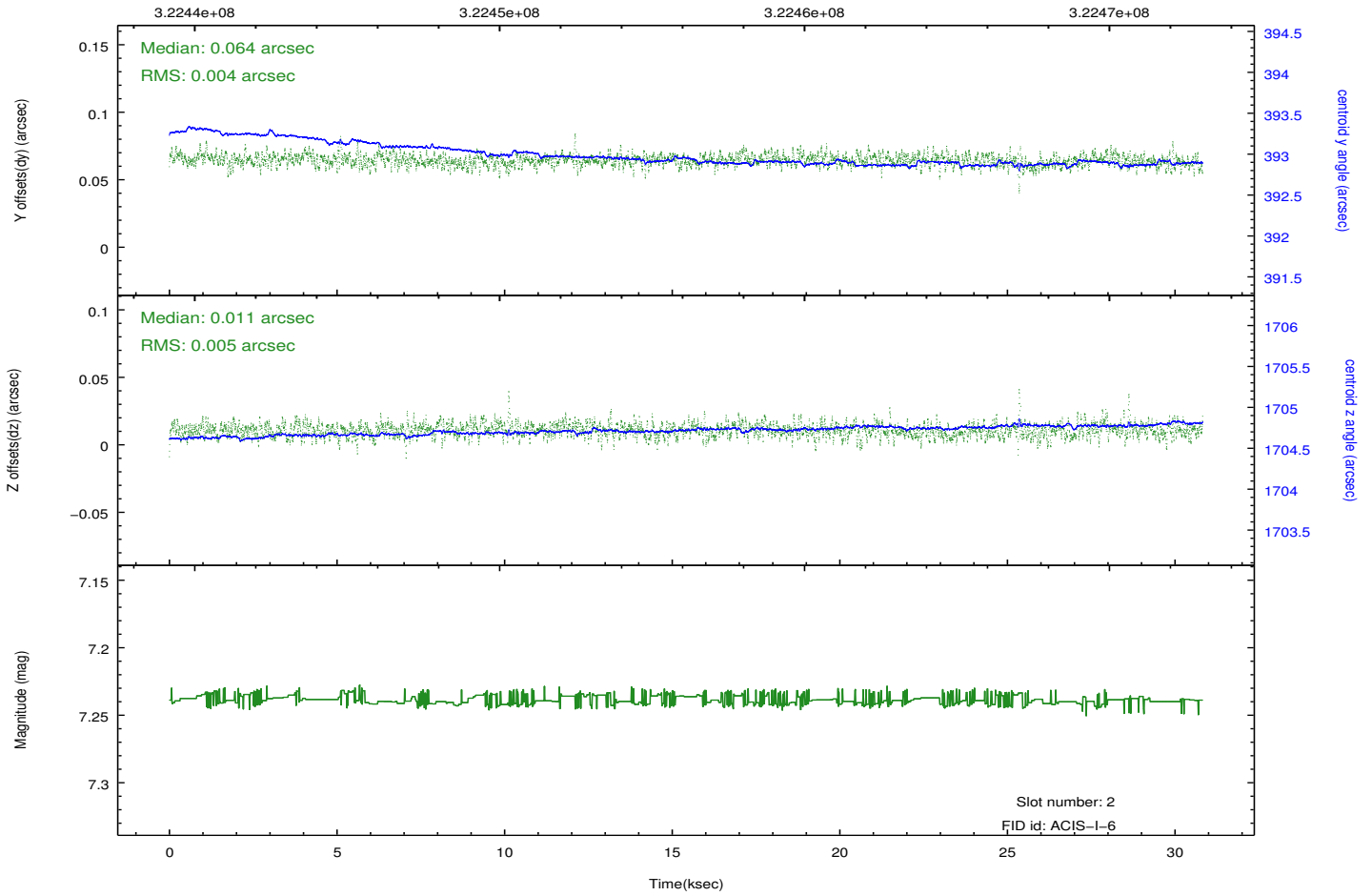
2.5.2 Slot 1



2.5.3 Slot 2



Time (s)



A Summary

A.1 Status

V&V Scientist	Beth Sundheim
V&V Date (YYYY-MM-DD)	2012.05.14
V&V Edition	1
V&V Disposition and Status	OK
V&V Charge Time	30.0421002

A.2 Comments

Window preference met.