

V&V Reference Report

L2 ASCDS Version : 8.4.4

Observation 9824 - L2 Version 2
Chandra X-Ray Center

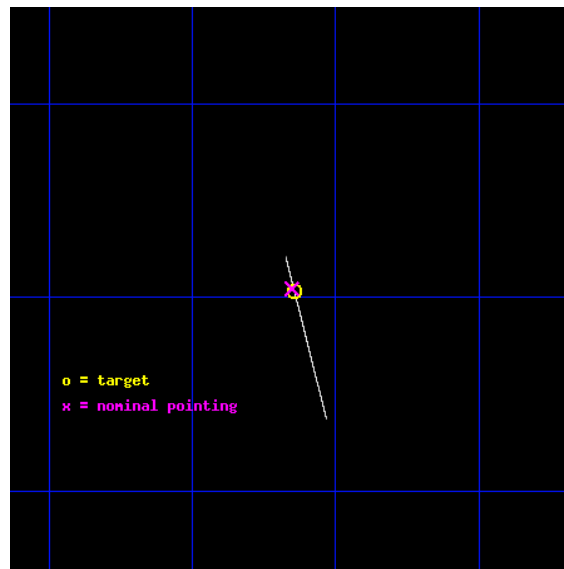
L2 Processing Date : May 31 2012

Contents

1	Front	2
2	OBI	3
2.1	OBI	3
2.1.1	Images	3
2.1.2	Bias	3
2.1.3	Parameters	4
2.1.4	Events	4
2.2	Compared Parameters	5
2.3	Aspect	6
2.4	Star Slots	9
2.4.1	Slot 3	9
2.4.2	Slot 4	10
2.4.3	Slot 5	11
2.4.4	Slot 6	12
2.4.5	Slot 7	13
2.5	FID Slots	14
2.5.1	Slot 0	14
2.5.2	Slot 1	15
2.5.3	Slot 2	16
A	Summary	17
A.1	Status	17
A.2	Comments	17

1 Front

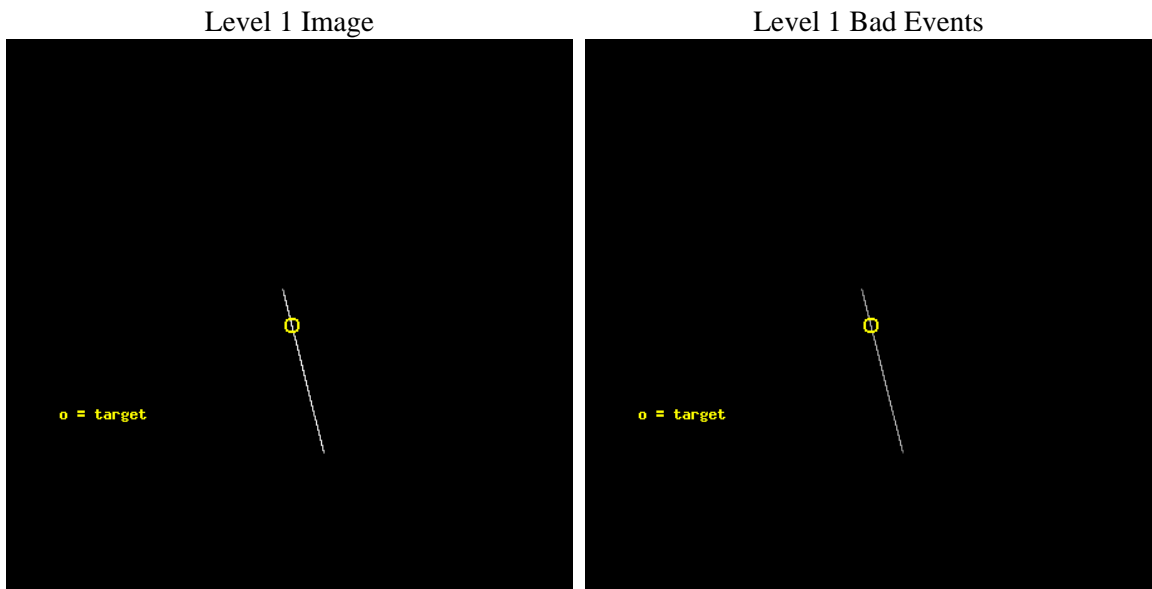
seq_num	501016	Sequence number
obs_id	9824	Observation id
title	Measuring the Magnetic Fields of Central Compact Objects in Supernova Remnants	Proposal title
observer	Prof. Jules Halpern	Principal investigator
object	PSR J1852+0040	Source name
ra_targ	283.160833	Observer's specified target RA [deg]
dec_targ	0.672167	Observer's specified target Dec [deg]
ra_nom	283.16301804531	Nominal RA [deg]
dec_nom	0.67415482999177	Nominal Dec [deg]
roll_nom	75.720091500446	Nominal Roll [deg]
revision	2	Processing version of data
ontime	29601.5	Sum of GTIs [s]
livetime	29485.869140625	Livetime [s]
ontime7	29601.5	Sum of GTIs [s]
l2events	205265	Number of level 2 events



2 OBI

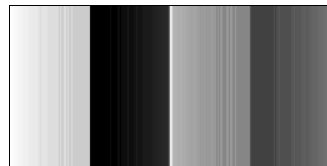
2.1 OBI

2.1.1 Images



2.1.2 Bias

Chip 7



2.1.3 Parameters

obi_num	0	Obi number	sched_exp_time	29470.000000	[s] Scheduled observation exposure time
ascdsver	8.4.4	Processing system revision	ontime	29601.5	Sum of GTIs [s]
caldbver	4.4.9	 	ontime7	29601.5	Sum of GTIs [s]
date	2012-05-31T15:24:06	Date and time of file creation	l1events	253647	Number of level 1 events
revision	2	Processing version of data			

2.1.4 Events

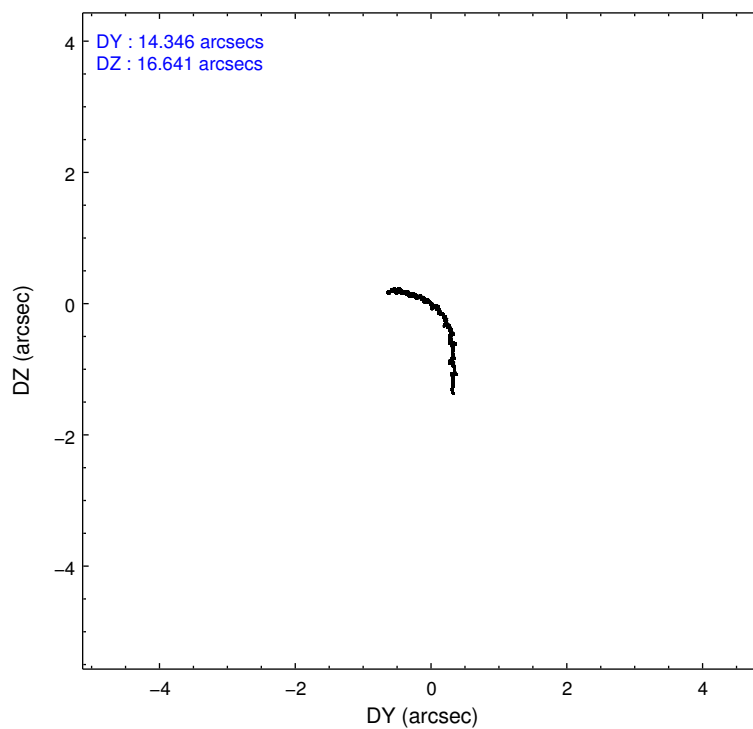
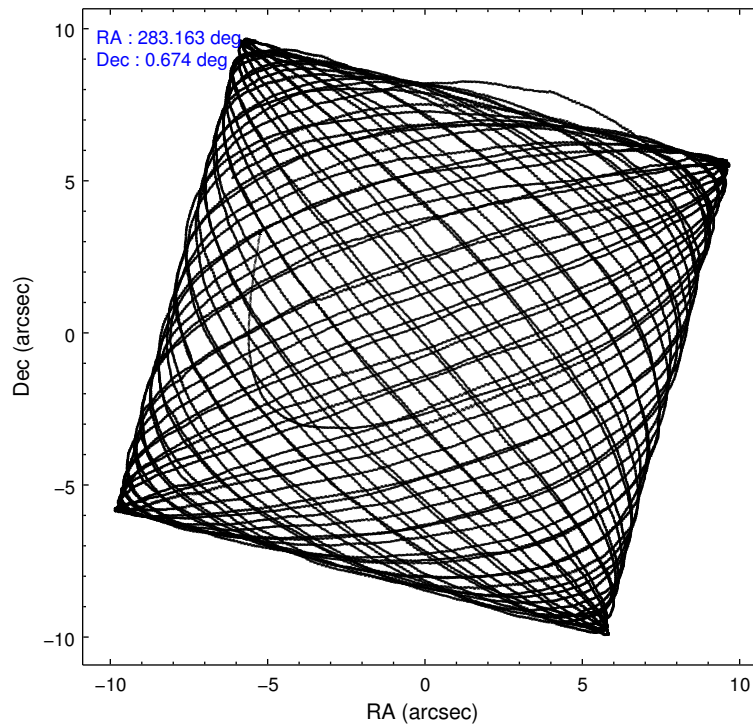
	ccd 7
level 1 events	253647
rejected events	40279
rejected %	15%

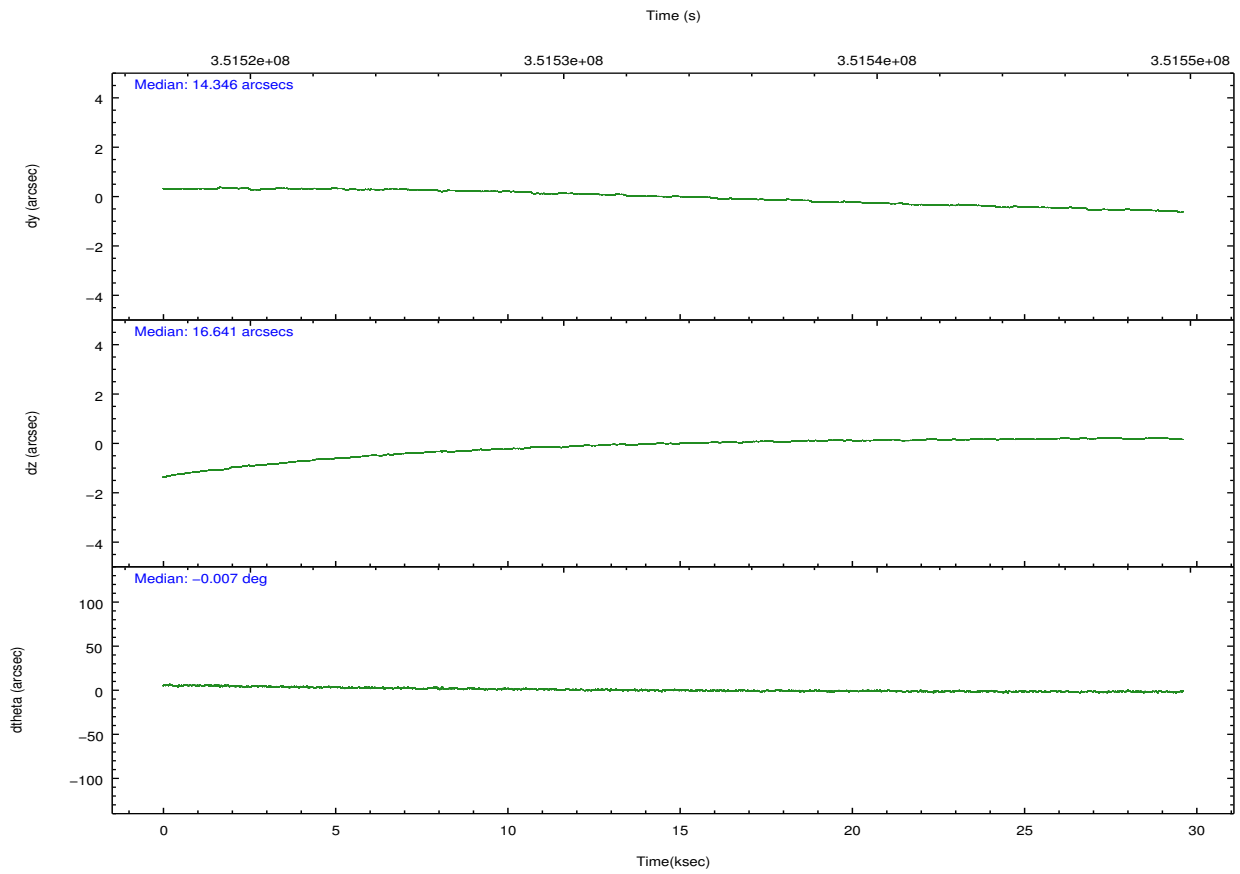
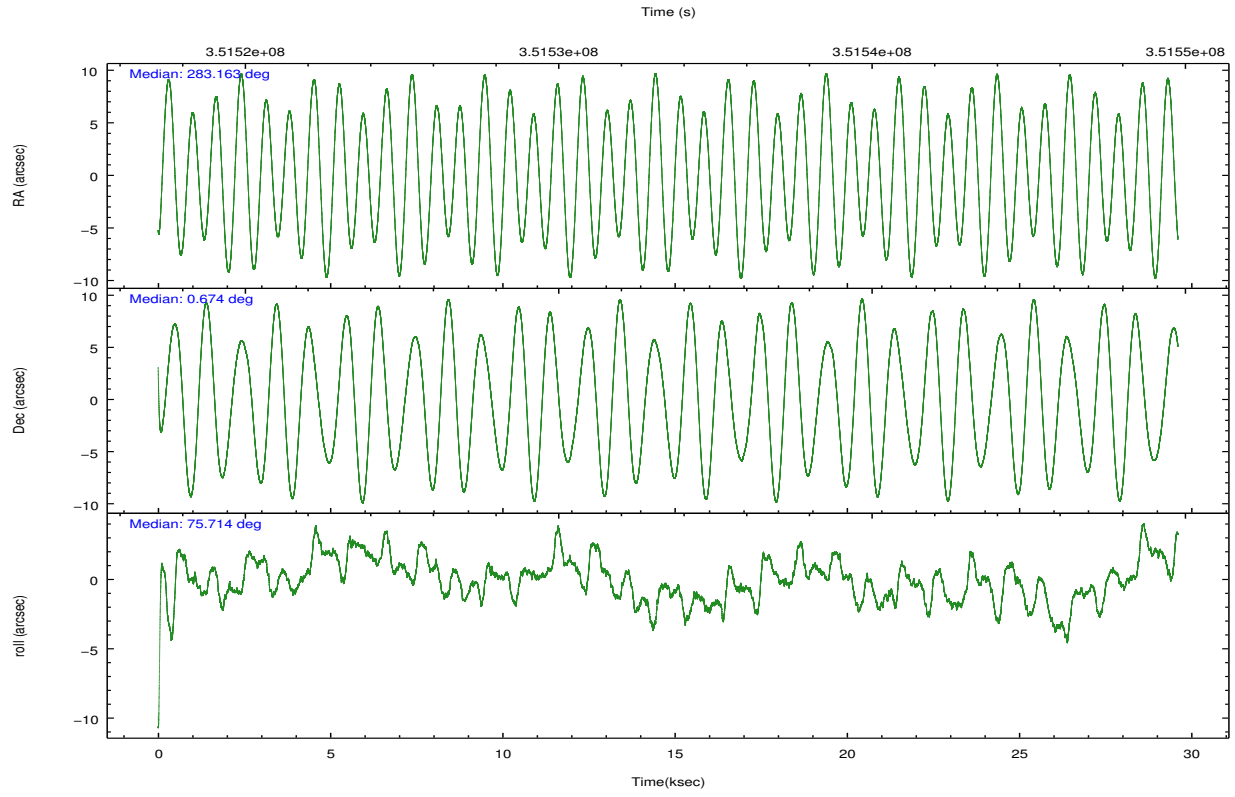
	ccd 7
grade 0 events	21444
	8%
grade 1 events	464
	0%
grade 2 events	60851
	23%
grade 3 events	13114
	5%
grade 4 events	12671
	4%
grade 5 events	31475
	12%
grade 6 events	113628
	44%
grade 7 events	0
	0%

2.2 Compared Parameters

Parameter	Planned	Actual	Parameter	Planned	Actual
Instrument	ACIS	ACIS	Obspar format version number	7	7
Detector	ACIS-7	ACIS-7	Obspar file type	PREDICTED	ACTUAL
Grating	NONE	NONE	Obspar update status	NONE	UPDATED
Data mode	CC33_FAINT	CC33_FAINT	Number of optional ACIS chips dropped	0	0
Observation mode	POINTING	POINTING	On-chip summing requested	N	N
[deg] Pointing RA	283.170768	283.1630180453109	Subarray requested	NONE	NONE
[deg] Pointing Dec	0.647922	0.6741548299917732	Alternating exposures requested	N	N
[deg] Pointing Roll	75.563379	75.72009150044563	[s] Primary exposure time	0.000000	0
[s] Window start time (MET)	351043266.184000	351043266.184000			
[s] Window stop time (MET)	351648006.184000	351648006.184000			
[mm] SIM focus pos	-0.684267	-0.6828225247311905			
[mm] SIM defocus	0	0.001444936568705701			
[mm] SIM translation stage pos	-180.462523	-180.4674950847706			
[mm] SIM translation stage offset	-9.67	-9.665027498237237			
[s] Observation start time (MET)	351518815.184000	351517264.98873			
Observation start date	2009-02-20T12:05:49	2009-02-20T11:41:04			
[s] Observation end time (MET)	351548285.184000	351549273.17782			
Observation end date	2009-02-20T20:16:59	2009-02-20T20:34:33			
Read mode	CONTINUOUS	CONTINUOUS			

2.3 Aspect



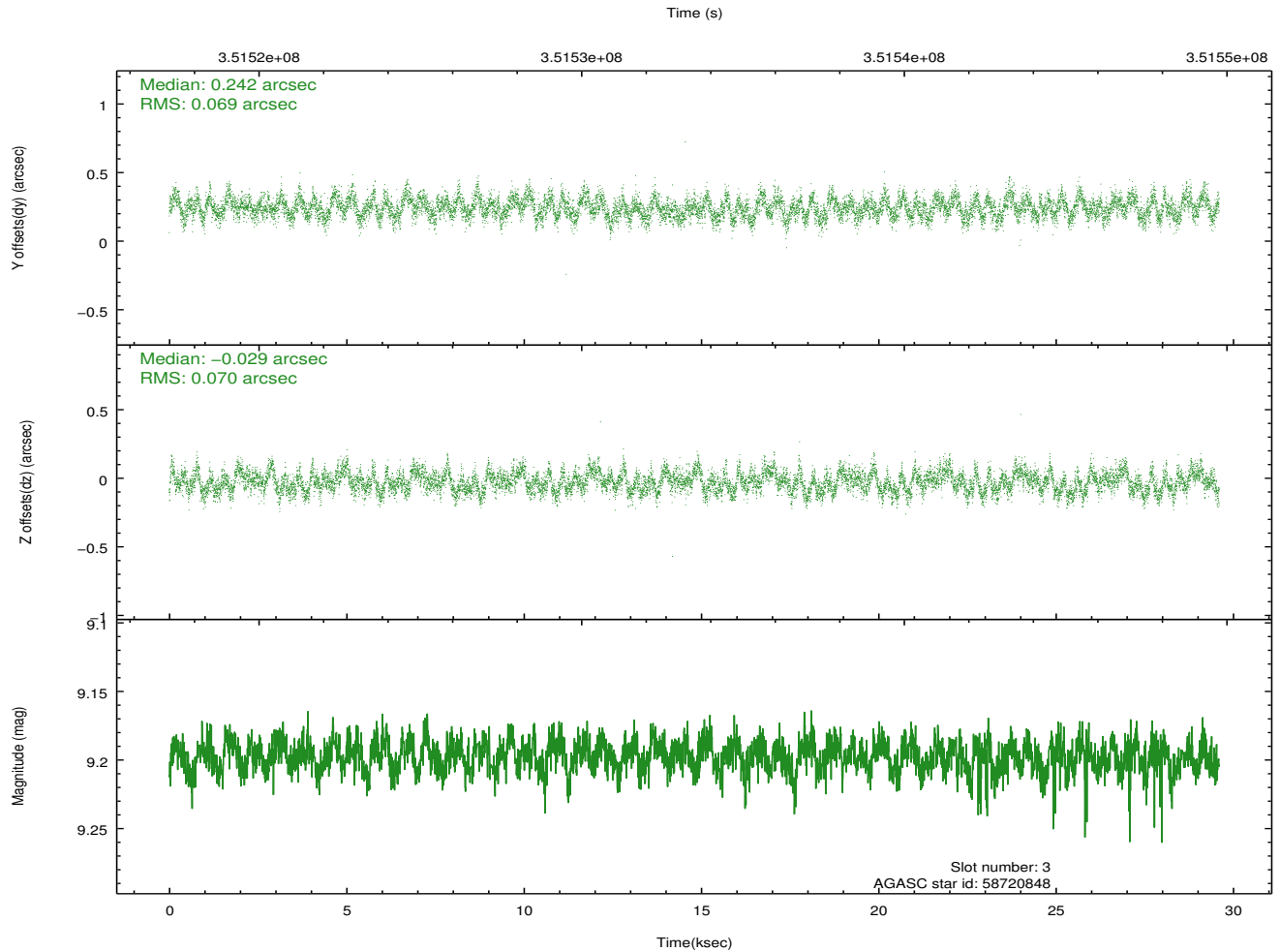
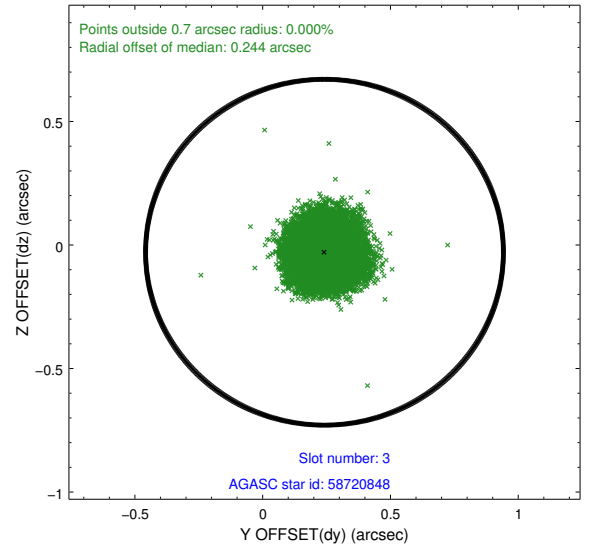
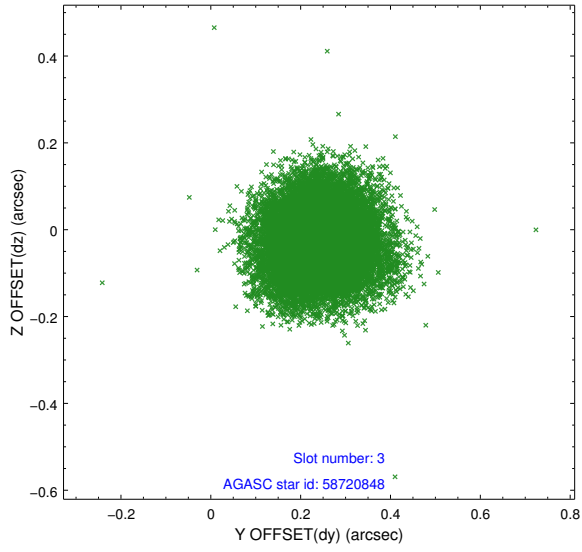


Slot Statistics

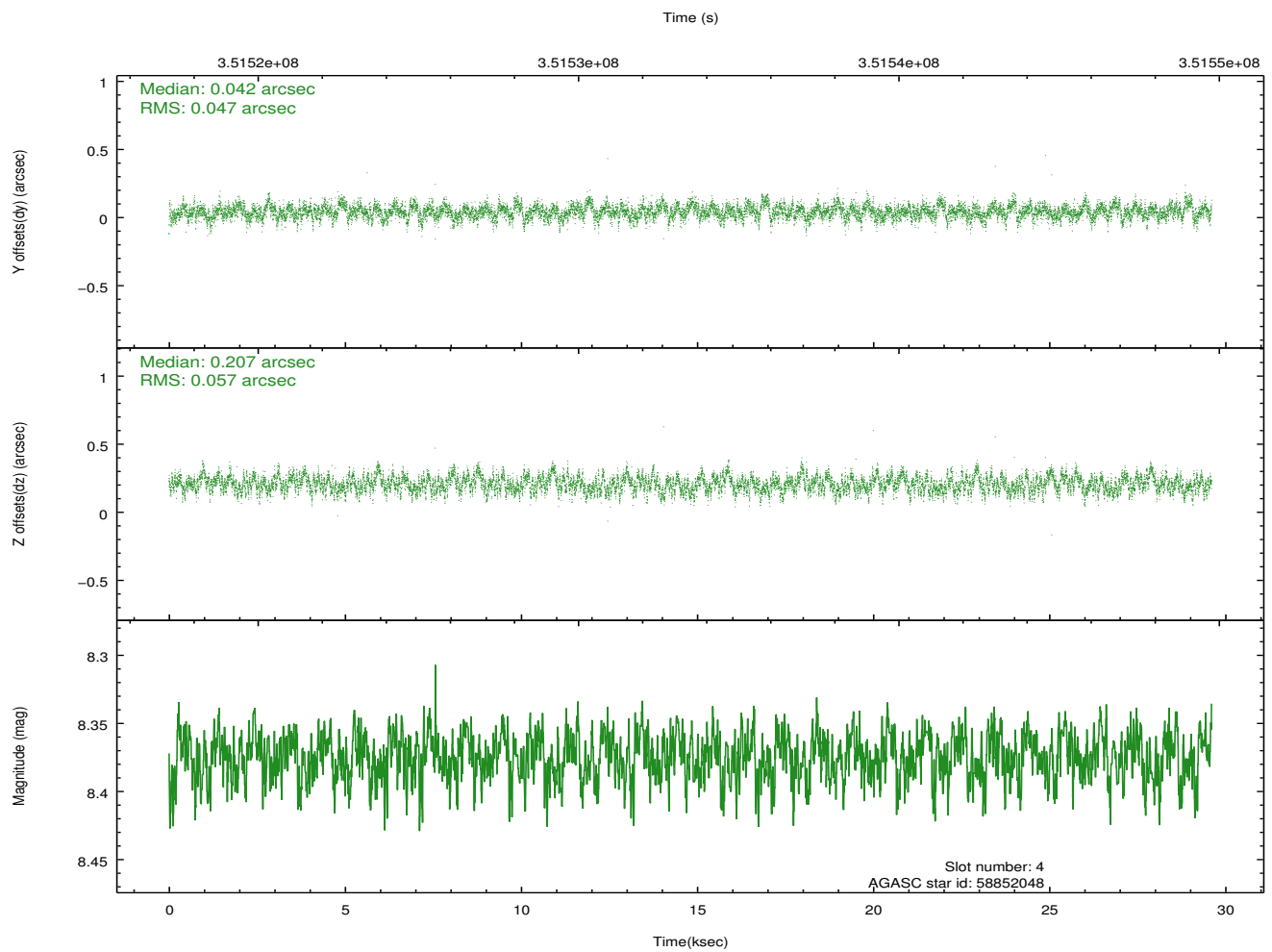
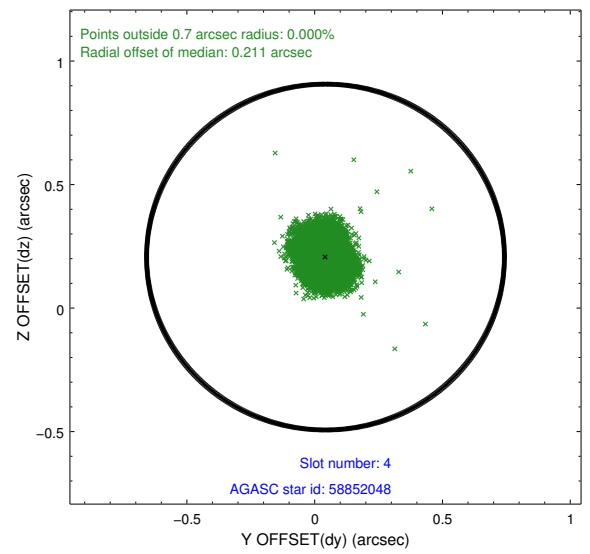
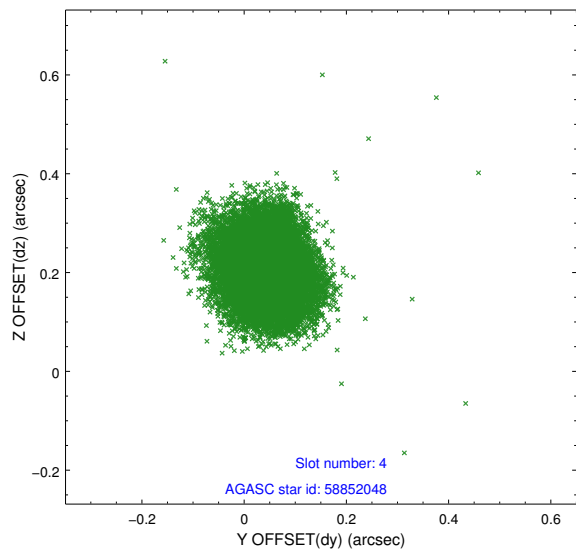
slot	status	id	mag	n_pts	med_dy	med_dz	dr1	dr2	ra	dec	mean_y	mean_z
0	FID	ACIS-S-1	6.97	7220	0.088	0.162	0.015	0.024	0.000000	0.000000	929.64	-1932.36
1	FID	ACIS-S-2	6.88	7222	-0.205	-0.166	0.018	0.049	0.000000	0.000000	-766.51	-1937.39
2	FID	ACIS-S-6	7.19	7220	0.101	0.006	0.019	0.046	0.000000	0.000000	395.19	608.68
3	GUIDE	58720848	9.20	14422	0.242	-0.029	0.105	0.166	282.753905	0.246323	-1773.90	1092.84
4	GUIDE	58852048	8.37	14437	0.042	0.207	0.078	0.126	283.366398	0.870285	950.99	-481.83
5	GUIDE	58857104	9.18	14423	-0.154	0.268	0.090	0.143	283.814800	0.638238	544.70	-2253.34
6	GUIDE	58721432	8.60	14431	-0.046	-0.427	0.071	0.112	282.605647	0.791519	-6.46	2098.49
7	GUIDE	58720424	9.00	14393	-0.082	-0.019	0.074	0.122	282.873634	1.408205	2383.94	1718.44

2.4 Star Slots

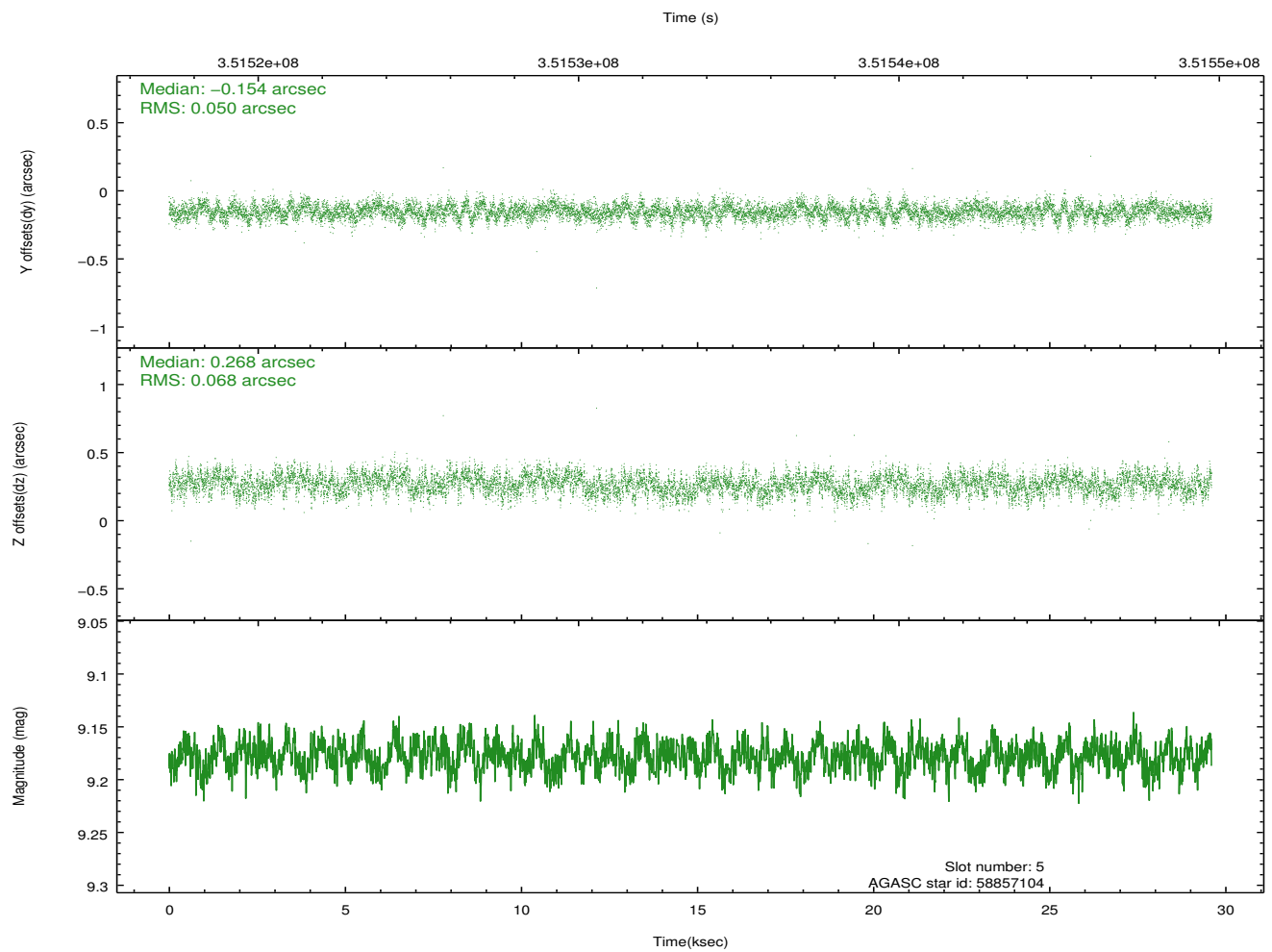
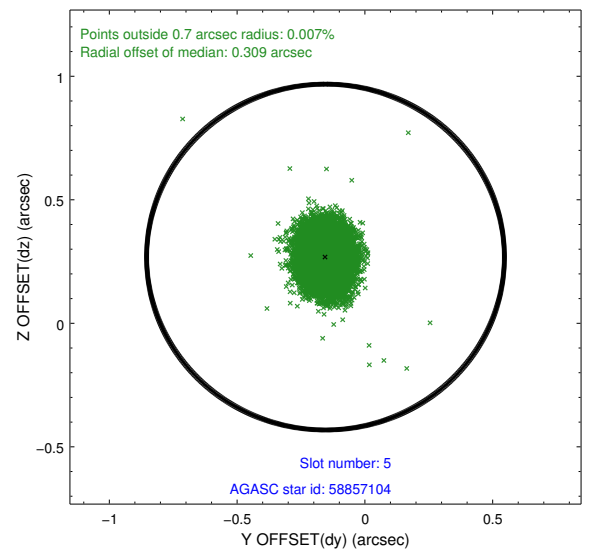
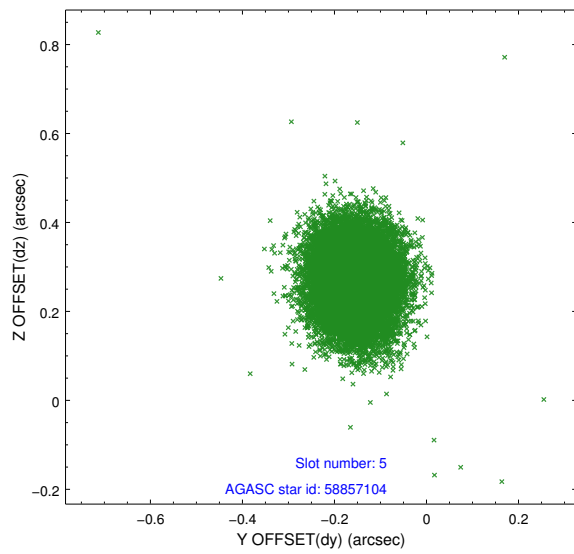
2.4.1 Slot 3



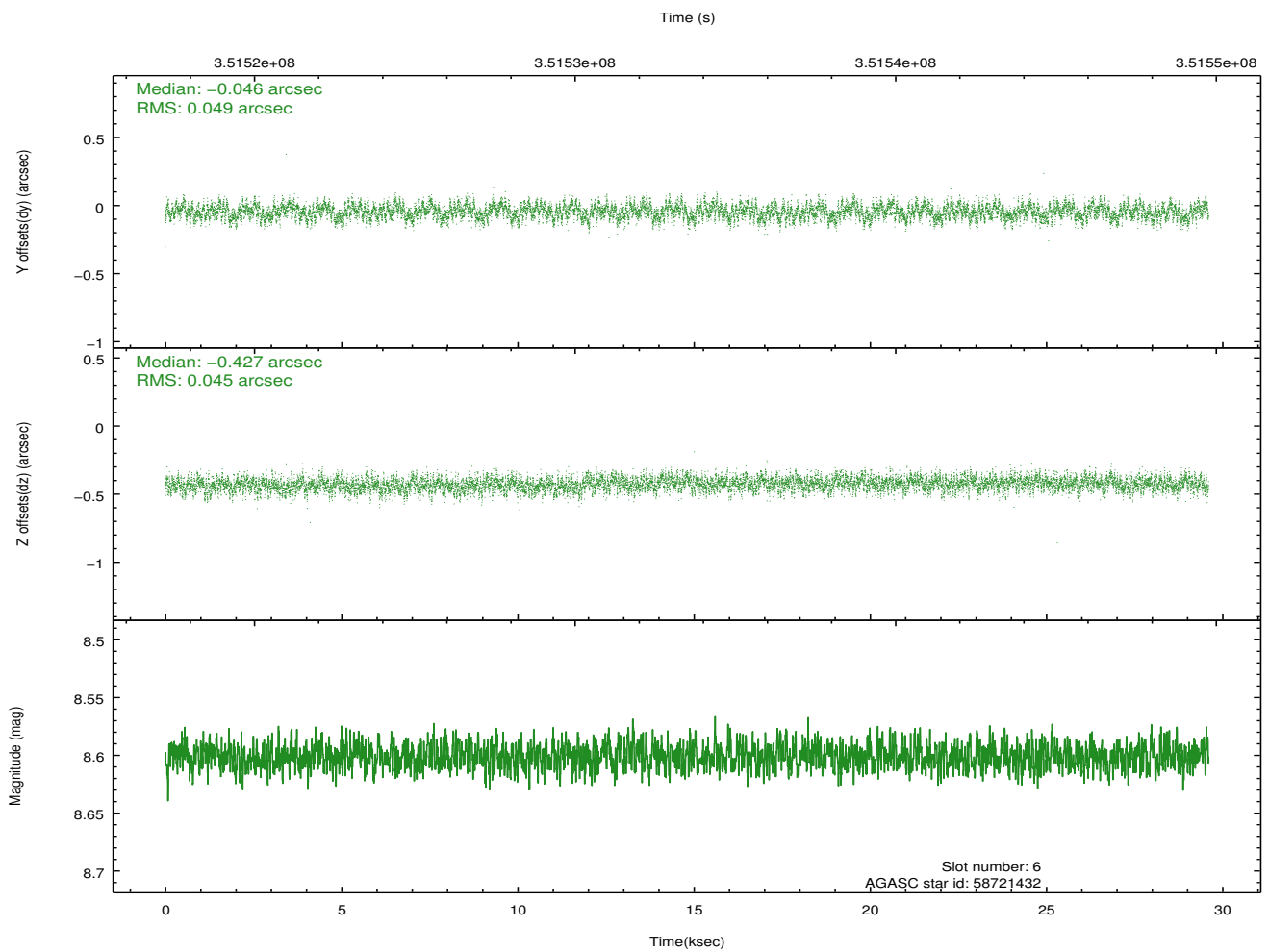
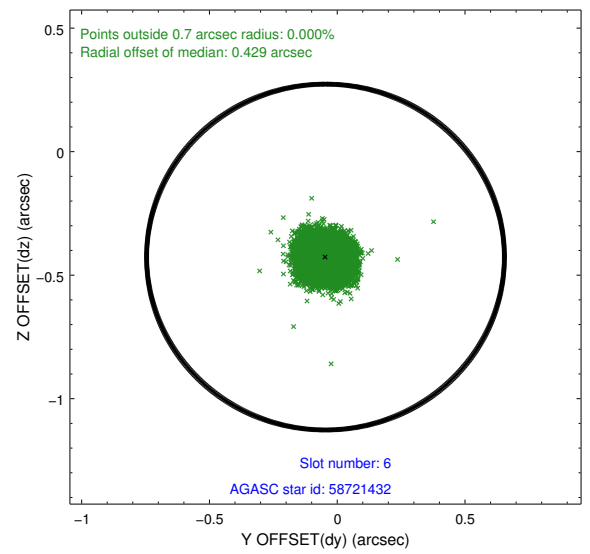
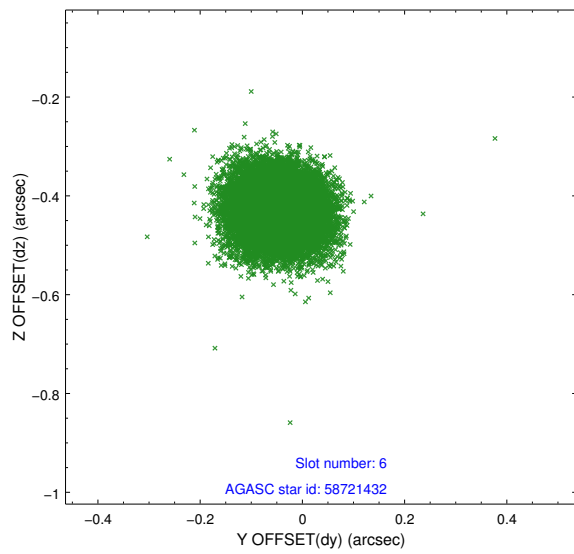
2.4.2 Slot 4



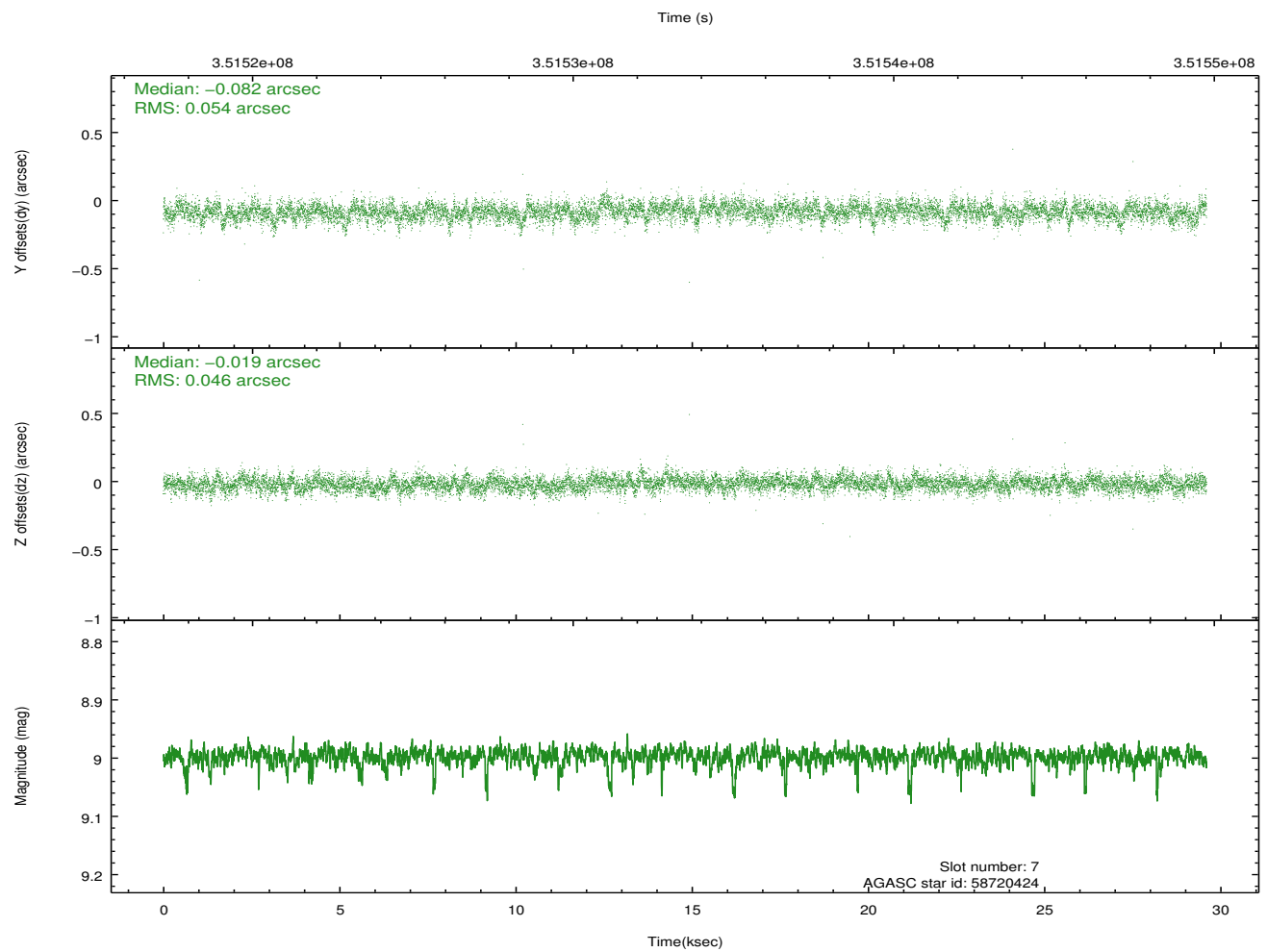
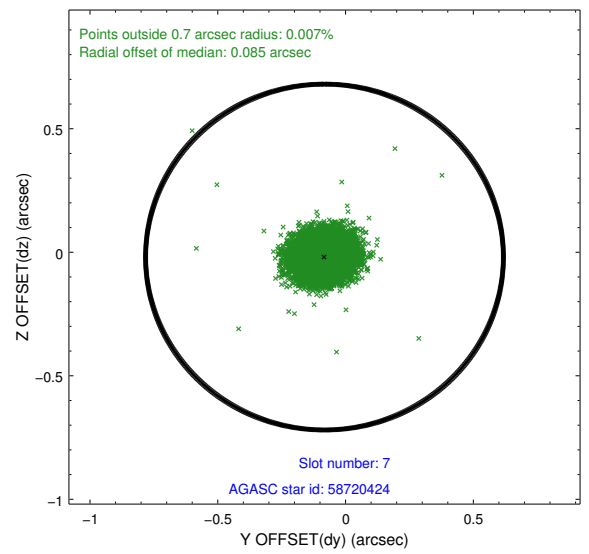
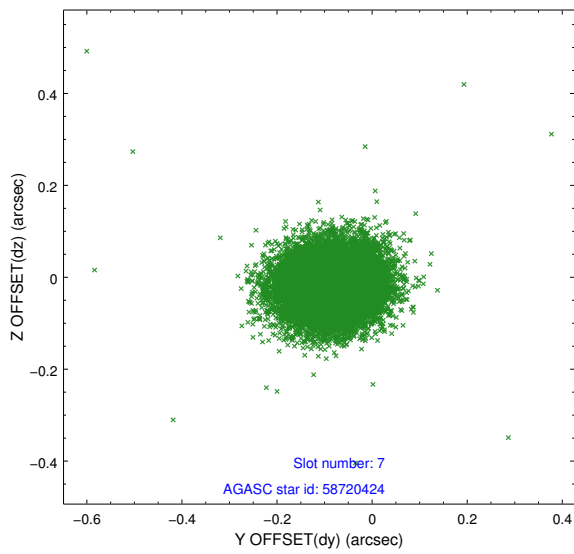
2.4.3 Slot 5



2.4.4 Slot 6

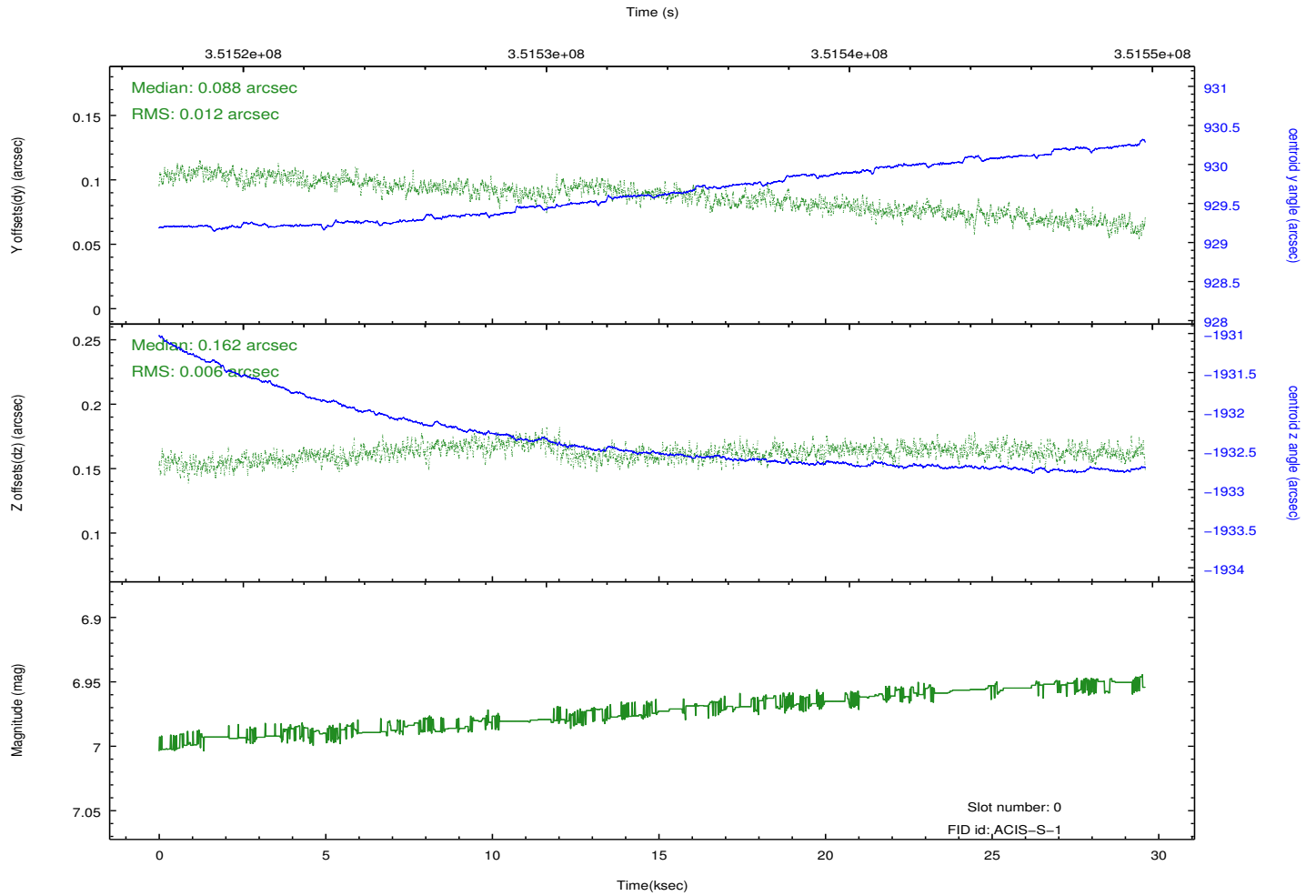
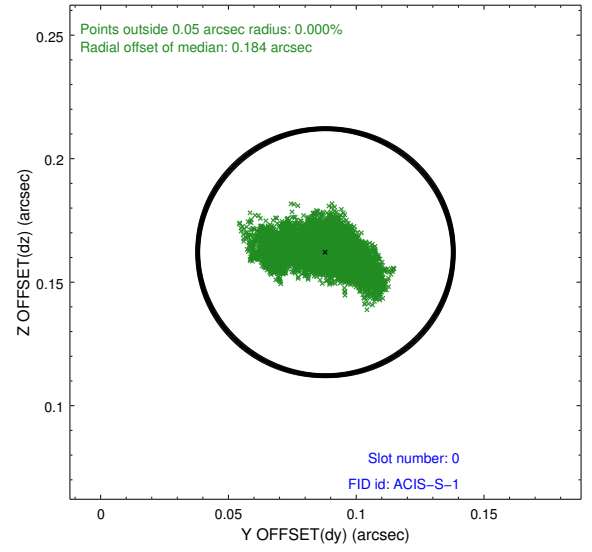
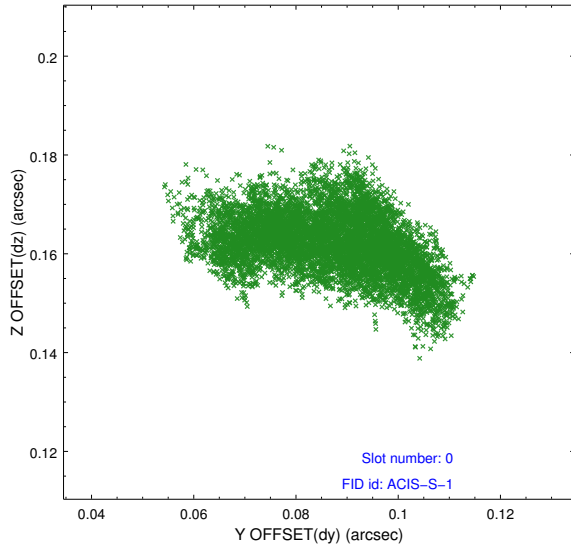


2.4.5 Slot 7

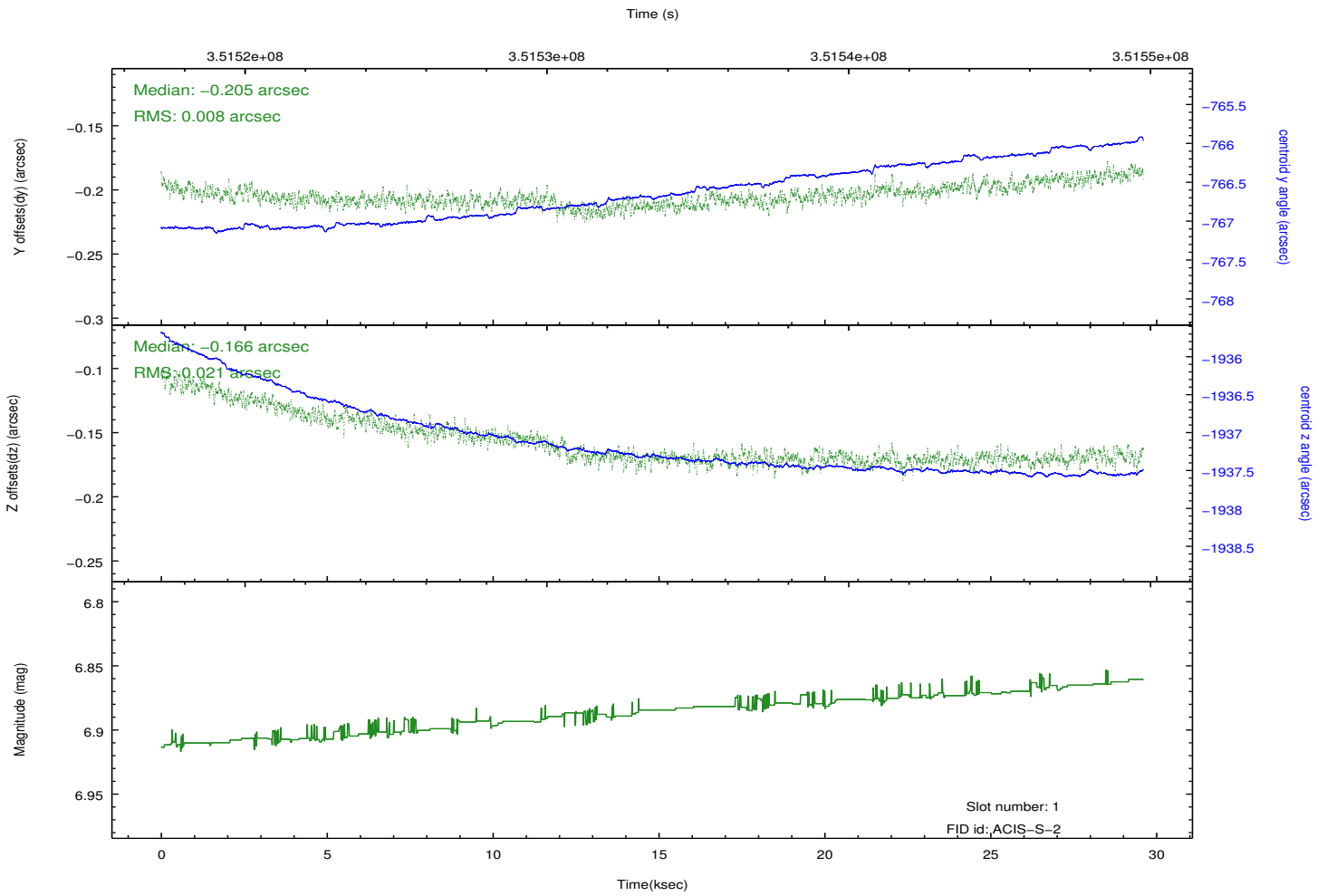
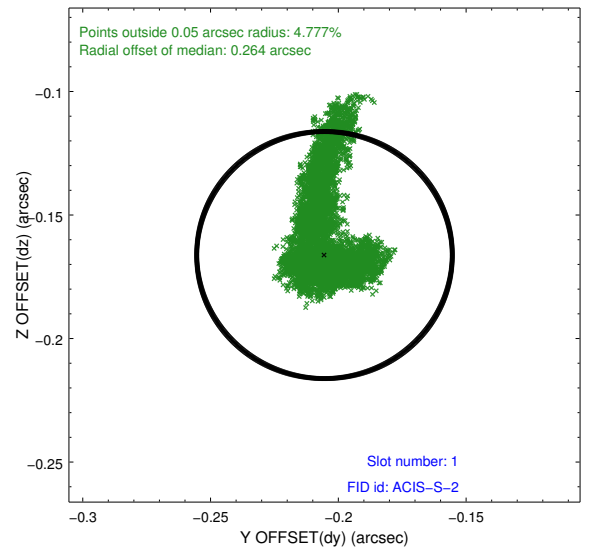
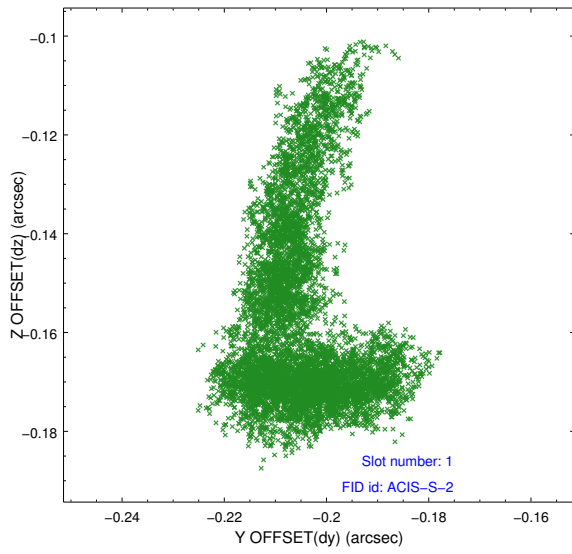


2.5 FID Slots

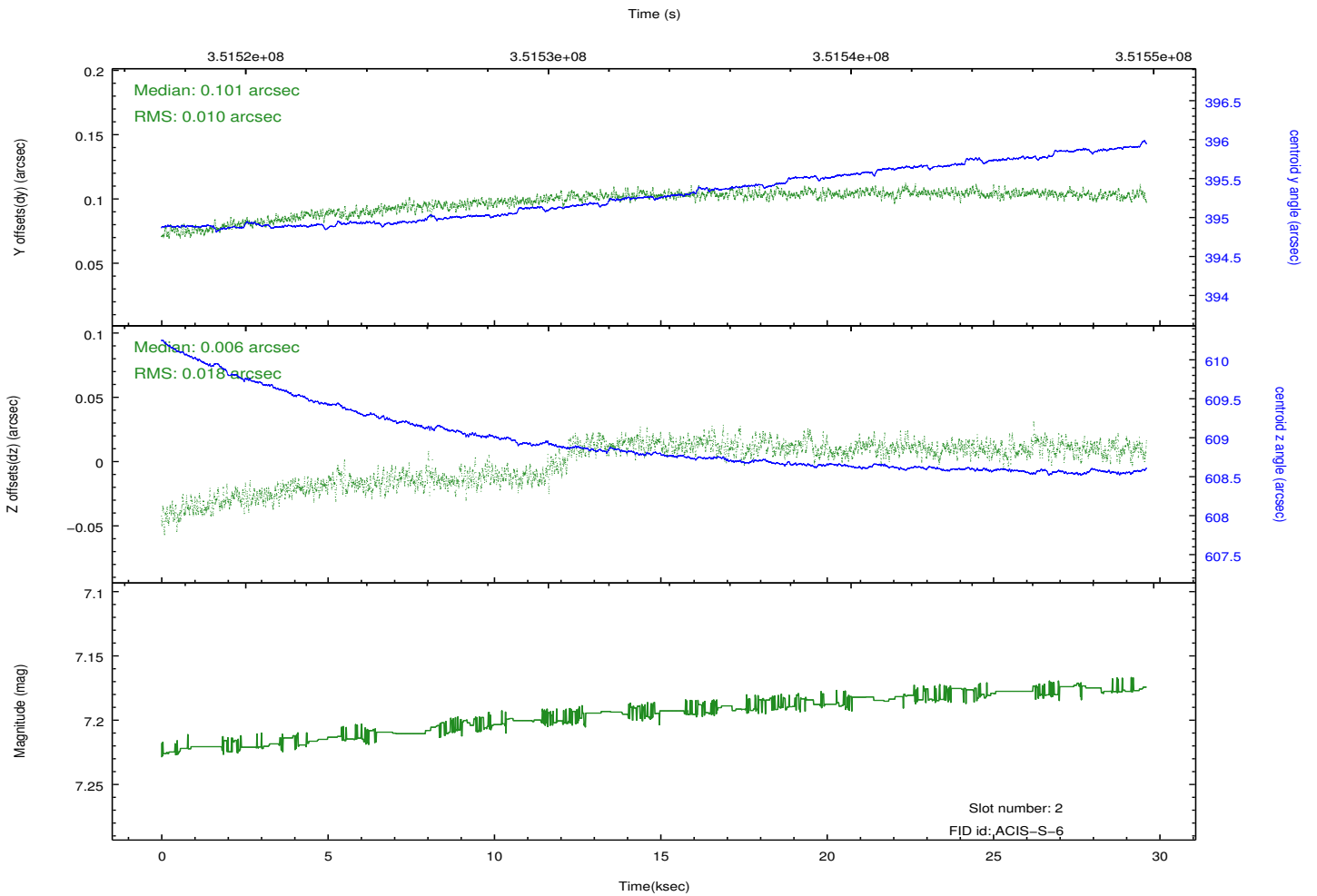
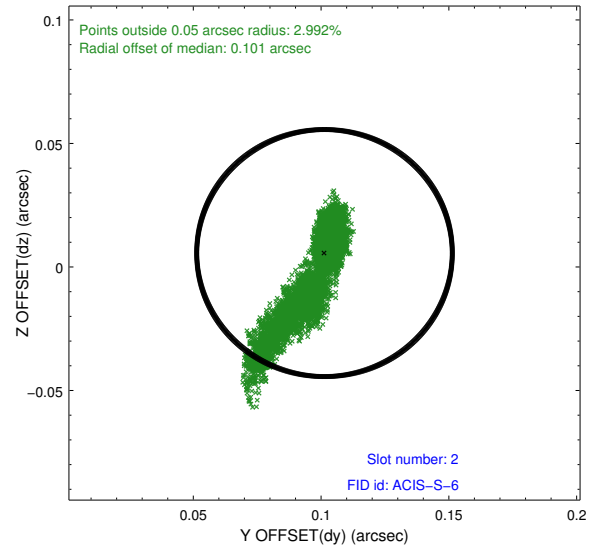
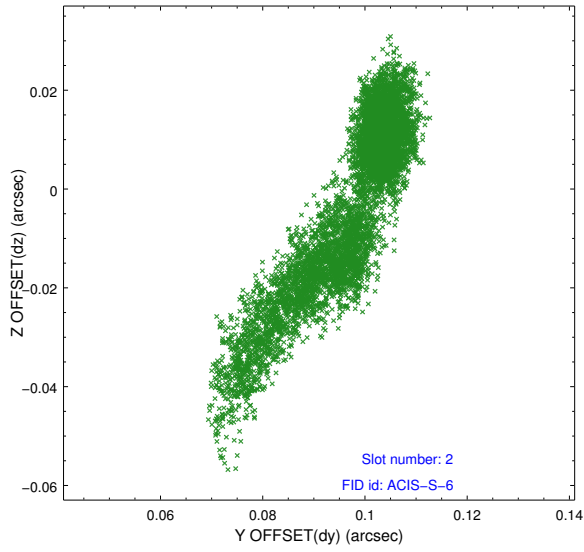
2.5.1 Slot 0



2.5.2 Slot 1



2.5.3 Slot 2



A Summary

A.1 Status

V&V Scientist	Joy Nichols
V&V Date (YYYY-MM-DD)	2012.06.01
V&V Edition	1
V&V Disposition and Status	OK
V&V Charge Time	29.6015

A.2 Comments