

V&V Reference Report

L2 ASCDS Version : 8.4.4

Observation 9864 - L2 Version 2
Chandra X-Ray Center

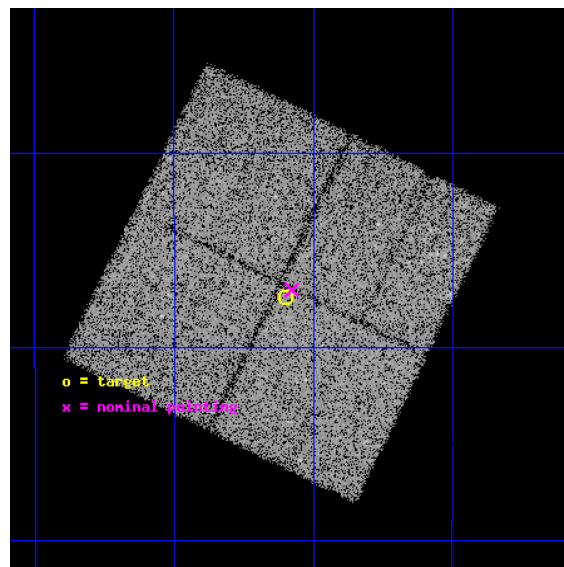
L2 Processing Date : May 16 2012

Contents

1	Front	2
2	OBI	3
2.1	OBI	3
2.1.1	Images	3
2.1.2	Bias	3
2.1.3	Parameters	4
2.1.4	Events	4
2.2	Compared Parameters	5
2.3	Aspect	6
2.4	Star Slots	9
2.4.1	Slot 3	9
2.4.2	Slot 4	10
2.4.3	Slot 5	11
2.4.4	Slot 6	12
2.4.5	Slot 7	13
2.5	FID Slots	14
2.5.1	Slot 0	14
2.5.2	Slot 1	15
2.5.3	Slot 2	16
A	Summary	17
A.1	Status	17
A.2	Comments	17

1 Front

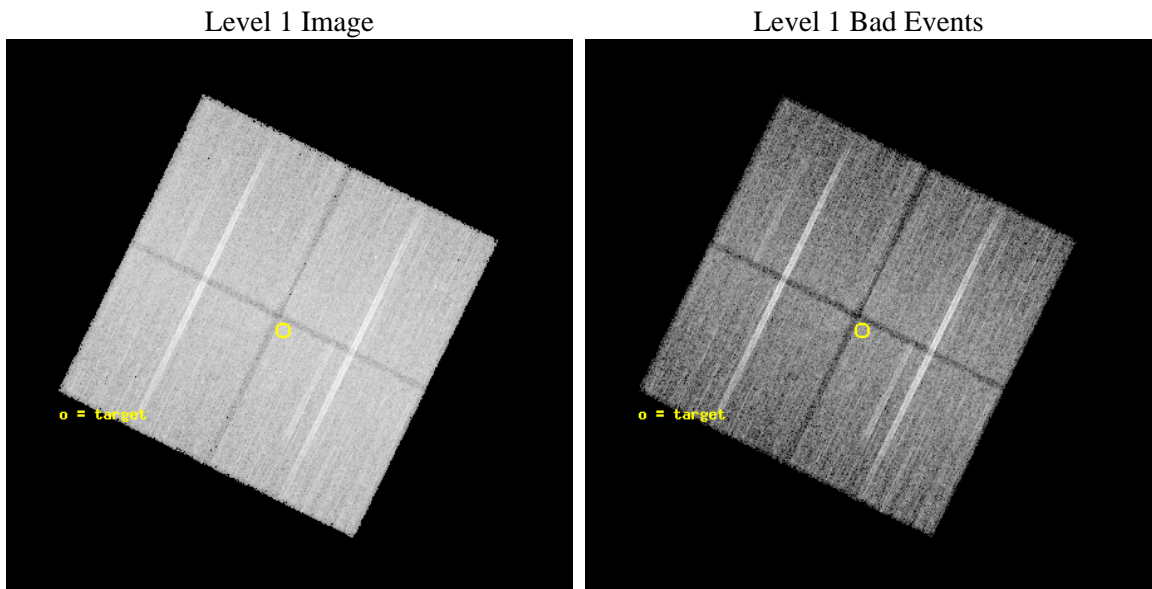
seq_num	200513	Sequence number
obs_id	9864	Observation id
title	Effects of massive star radiation on circumstellar disks evolution in the Eagle Nebula	Proposal title
observer	Dr. Mario Guarcello	Principal investigator
object	NGC 6611	Source name
dtcycle	0	
cycle	P	events from which exps? Prim/Second/Both
ra_targ	274.9	Observer's specified target RA [deg]
dec_targ	-13.79	Observer's specified target Dec [deg]
ra_nom	274.89426337691	Nominal RA [deg]
dec_nom	-13.784128027143	Nominal Dec [deg]
roll_nom	116.20732304973	Nominal Roll [deg]
revision	2	Processing version of data
ontime	24117.959185302	Sum of GTIs [s]
livetime	23802.840293163	Livetime [s]
ontime0	24121.100185513	Sum of GTIs [s]
ontime1	24111.677274525	Sum of GTIs [s]
ontime2	24114.818224847	Sum of GTIs [s]
ontime3	24117.959185302	Sum of GTIs [s]
l2events	105691	Number of level 2 events



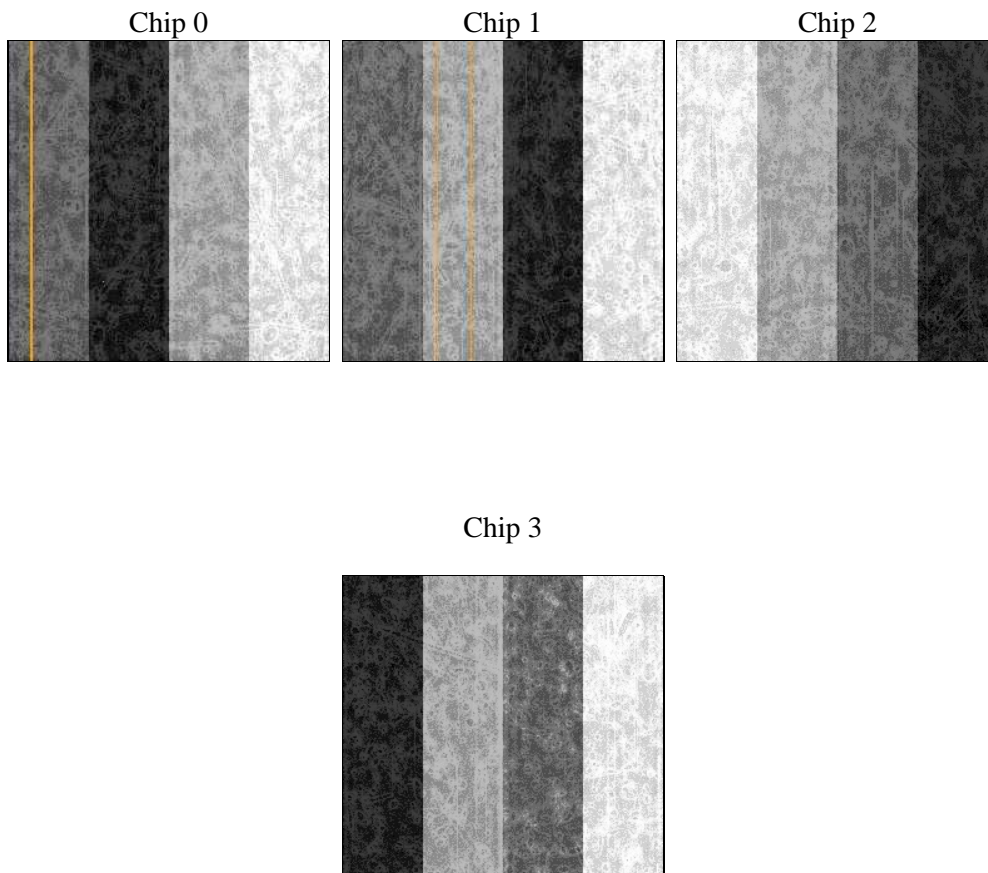
2 OBI

2.1 OBI

2.1.1 Images



2.1.2 Bias



2.1.3 Parameters

obi_num	0	Obi number	sched_exp_time	24000.000000	[s] Scheduled observation exposure time
ascdsver	8.4.4	Processing system revision	ontime	24117.959185302	Sum of GTIs [s]
caldsver	4.4.9	 	ontime0	24121.100185513	Sum of GTIs [s]
date	2012-05-16T03:52:20	Date and time of file creation	ontime1	24111.677274525	Sum of GTIs [s]
revision	2	Processing version of data	ontime2	24114.818224847	Sum of GTIs [s]
			ontime3	24117.959185302	Sum of GTIs [s]
			l1events	916163	Number of level 1 events

2.1.4 Events

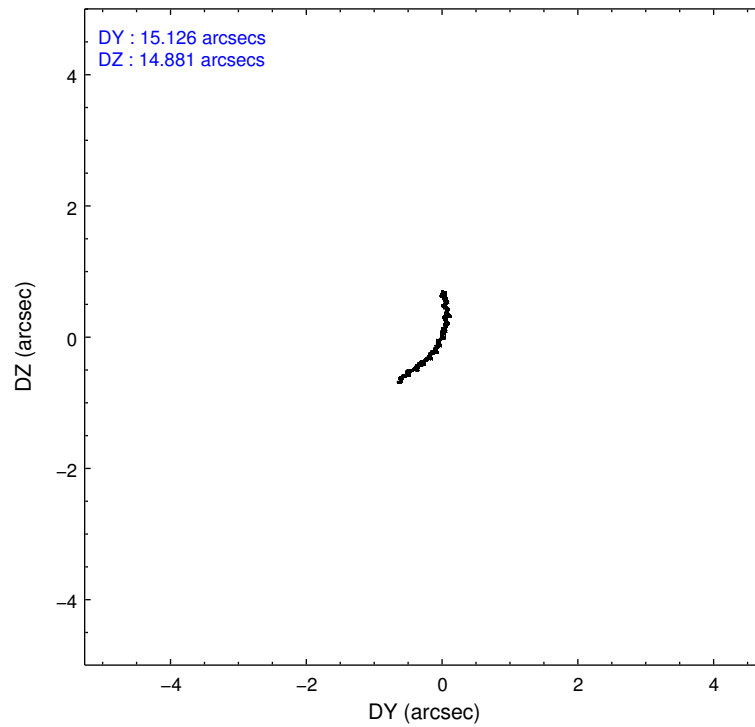
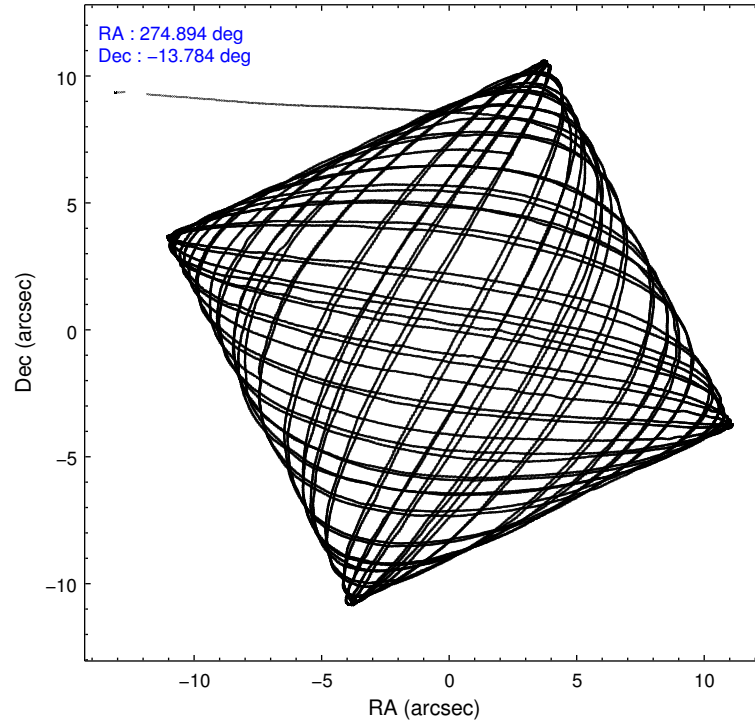
	ccd 0	ccd 1	ccd 2	ccd 3
level 1 events	215528	221983	240455	238197
rejected events	185937	190786	209214	207875
rejected %	86%	85%	87%	87%

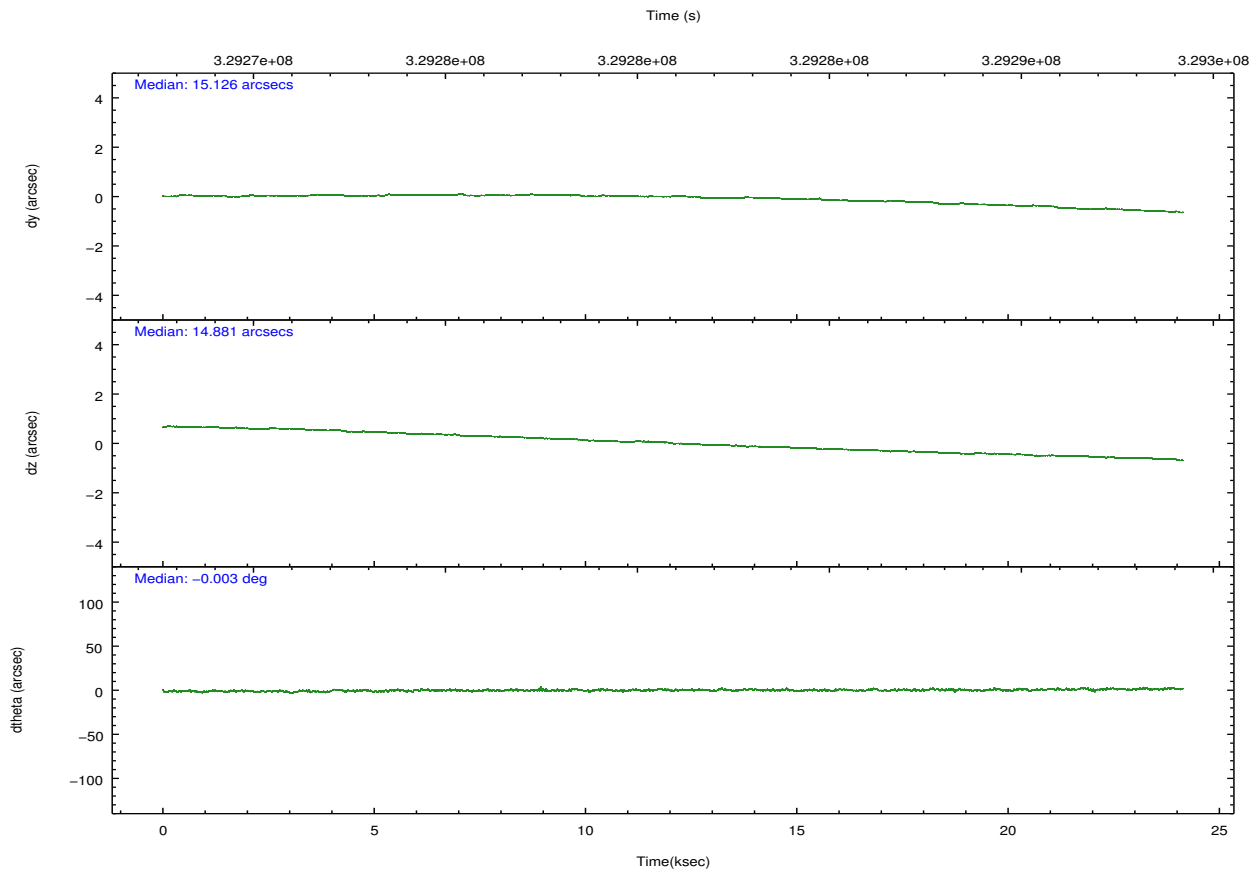
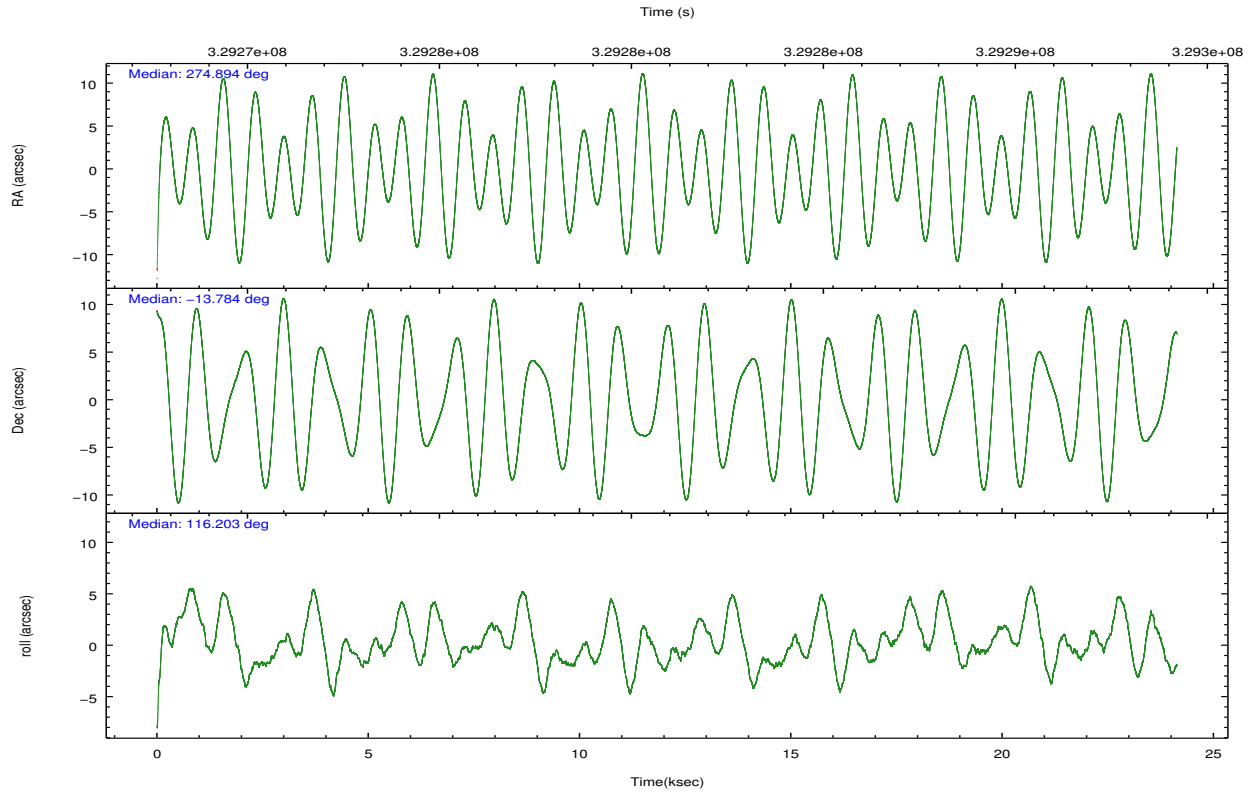
	ccd 0	ccd 1	ccd 2	ccd 3
grade 0 events	13409	12595	15430	14317
	6%	5%	6%	6%
grade 1 events	161	143	189	172
	0%	0%	0%	0%
grade 2 events	6484	7514	6275	6091
	3%	3%	2%	2%
grade 3 events	2882	2923	2782	2776
	1%	1%	1%	1%
grade 4 events	2555	2886	2774	2780
	1%	1%	1%	1%
grade 5 events	10060	10592	9778	11259
	4%	4%	4%	4%
grade 6 events	5125	6213	4895	5229
	2%	2%	2%	2%
grade 7 events	174852	179117	198332	195573
	81%	80%	82%	82%

2.2 Compared Parameters

Parameter	Planned	Actual	Parameter	Planned	Actual
Instrument	ACIS	ACIS	Obspar format version number	7	7
Detector	ACIS-0123	ACIS-0123	Obspar file type	PREDICTED	ACTUAL
Grating	NONE	NONE	Obspar update status	NONE	UPDATED
Data mode	FAINT	FAINT	Number of optional ACIS chips dropped	0	0
Observation mode	POINTING	POINTING	On-chip summing requested	N	N
[deg] Pointing RA	274.917866	274.8942633769102	Subarray requested	NONE	NONE
[deg] Pointing Dec	-13.799342	-13.78412802714255	Alternating exposures requested	N	N
[deg] Pointing Roll	116.004263	116.2073230497327	[s] Primary exposure time	0.000000	3.1
[mm] SIM focus pos	-0.782348	-0.7809083437167272			
[mm] SIM defocus	0	0.001439871863259334			
[mm] SIM translation stage pos	-233.592463	-233.5874344608287			
[mm] SIM translation stage offset	0	-0.005018542100998502			
[s] Observation start time (MET)	329269001.184000	329267745.9458			
Observation start date	2008-06-07T23:35:36	2008-06-07T23:15:45			
[s] Observation end time (MET)	329293001.184000	329293396.57206			
Observation end date	2008-06-08T06:15:36	2008-06-08T06:23:16			
Read mode	TIMED	TIMED			

2.3 Aspect



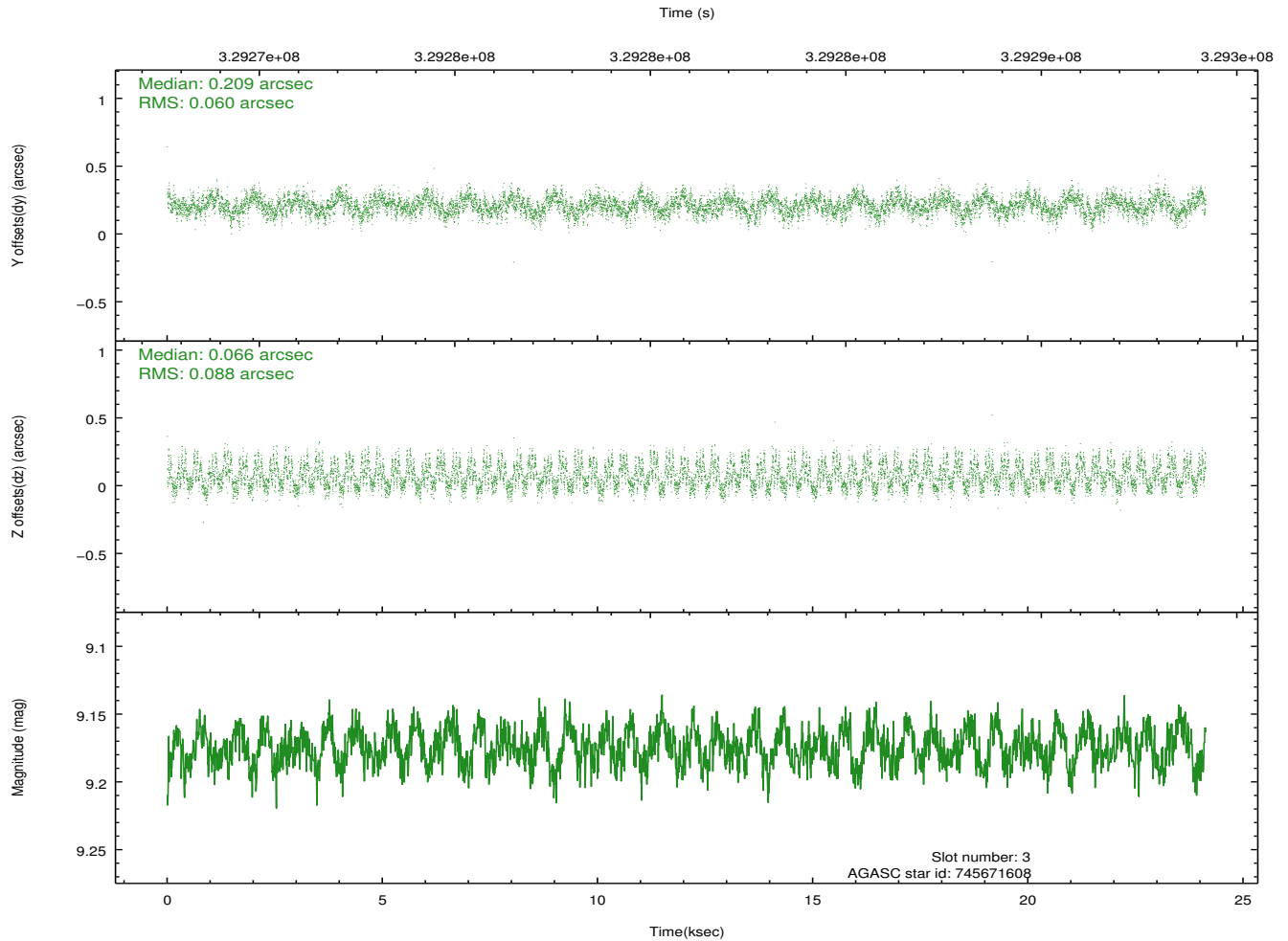
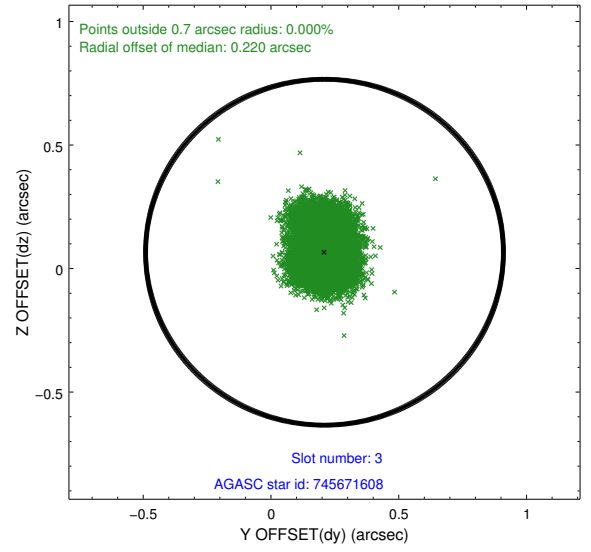
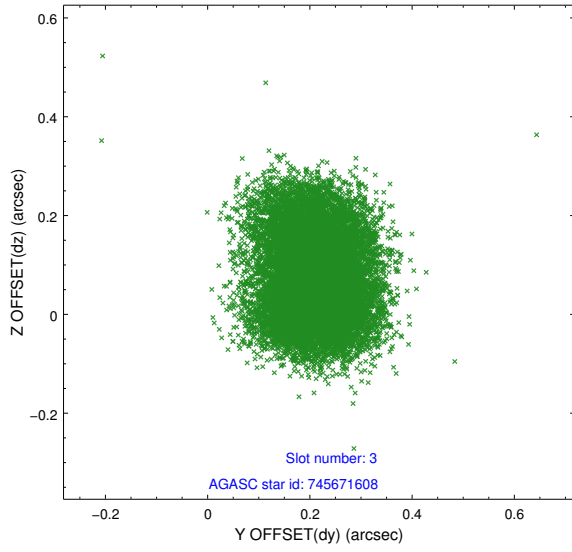


Slot Statistics

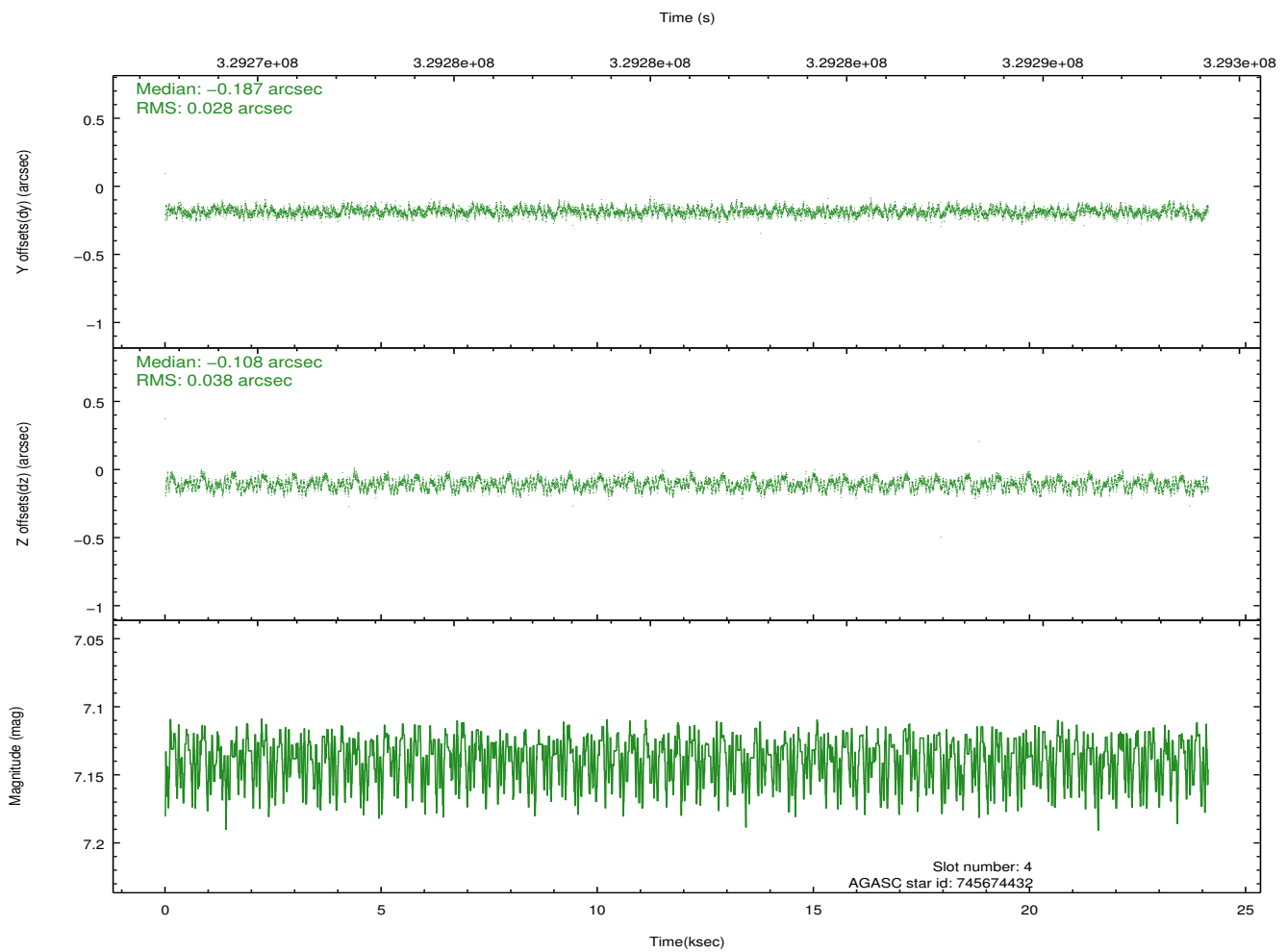
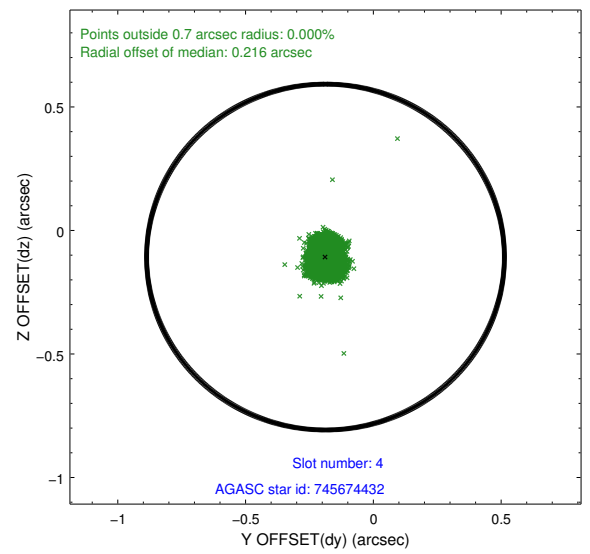
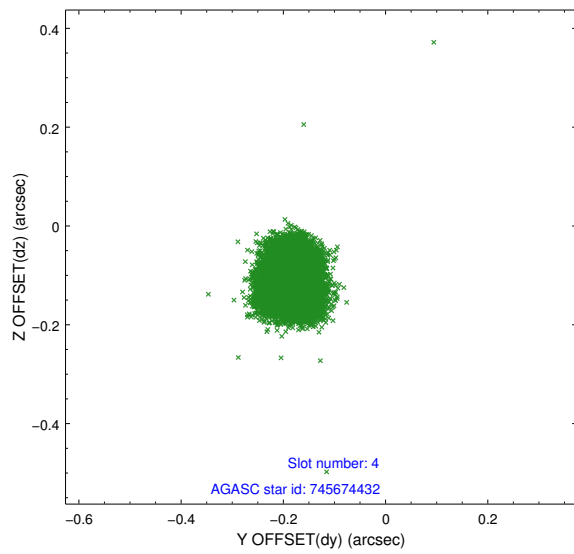
slot	status	id	mag	n_pts	med_dy	med_dz	dr1	dr2	ra	dec	mean_y	mean_z
0	FID	ACIS-I-2	6.88	5884	-0.063	-0.052	0.013	0.023	0.000000	0.000000	-769.78	-844.92
1	FID	ACIS-I-4	6.91	5885	0.117	0.056	0.010	0.020	0.000000	0.000000	2144.38	1061.32
2	FID	ACIS-I-5	6.95	5884	-0.156	0.066	0.013	0.022	0.000000	0.000000	-1823.55	1059.29
3	GUIDE	745671608	9.17	11762	0.209	0.066	0.115	0.179	275.327786	-13.786724	-588.31	-1307.18
4	GUIDE	745674432	7.14	11771	-0.187	-0.108	0.051	0.080	274.729377	-13.541343	1123.56	185.94
5	GUIDE	745675656	7.96	11765	-0.086	-0.062	0.062	0.098	274.656383	-13.977352	-175.94	1102.39
6	GUIDE	745680352	9.02	11767	-0.010	-0.069	0.081	0.132	274.602320	-14.174957	-733.58	1583.58
7	GUIDE	745676512	8.97	11765	0.074	0.169	0.069	0.112	275.415079	-14.258251	-2246.98	-833.70

2.4 Star Slots

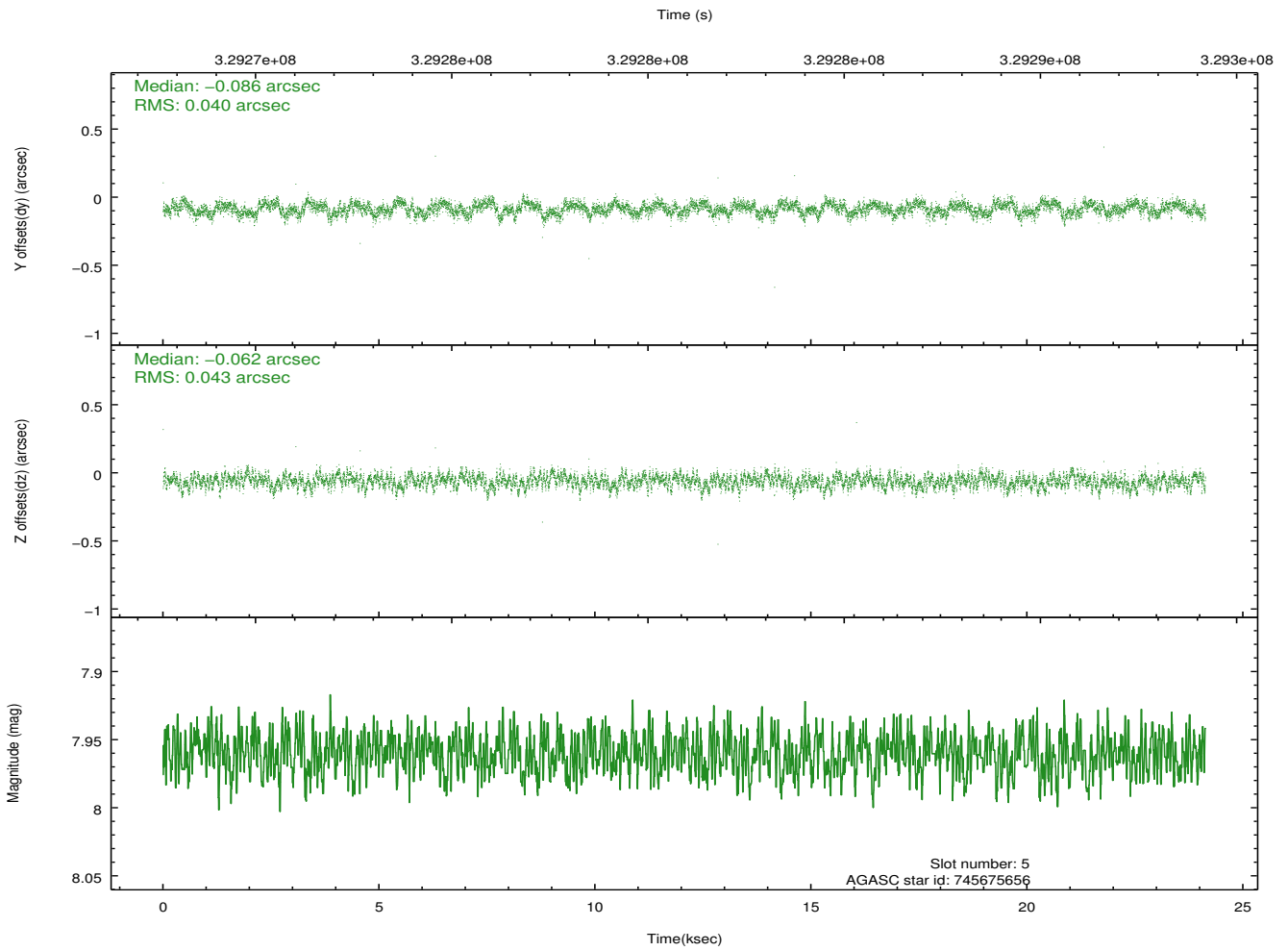
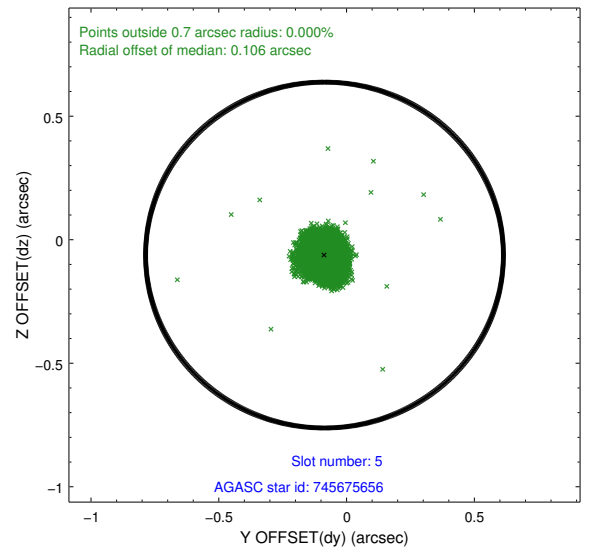
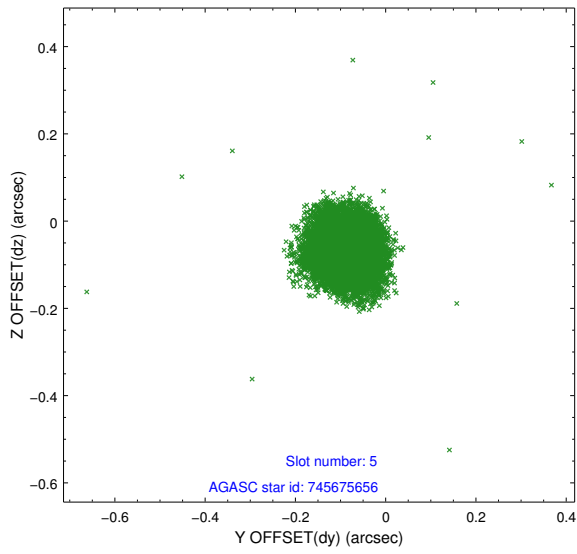
2.4.1 Slot 3



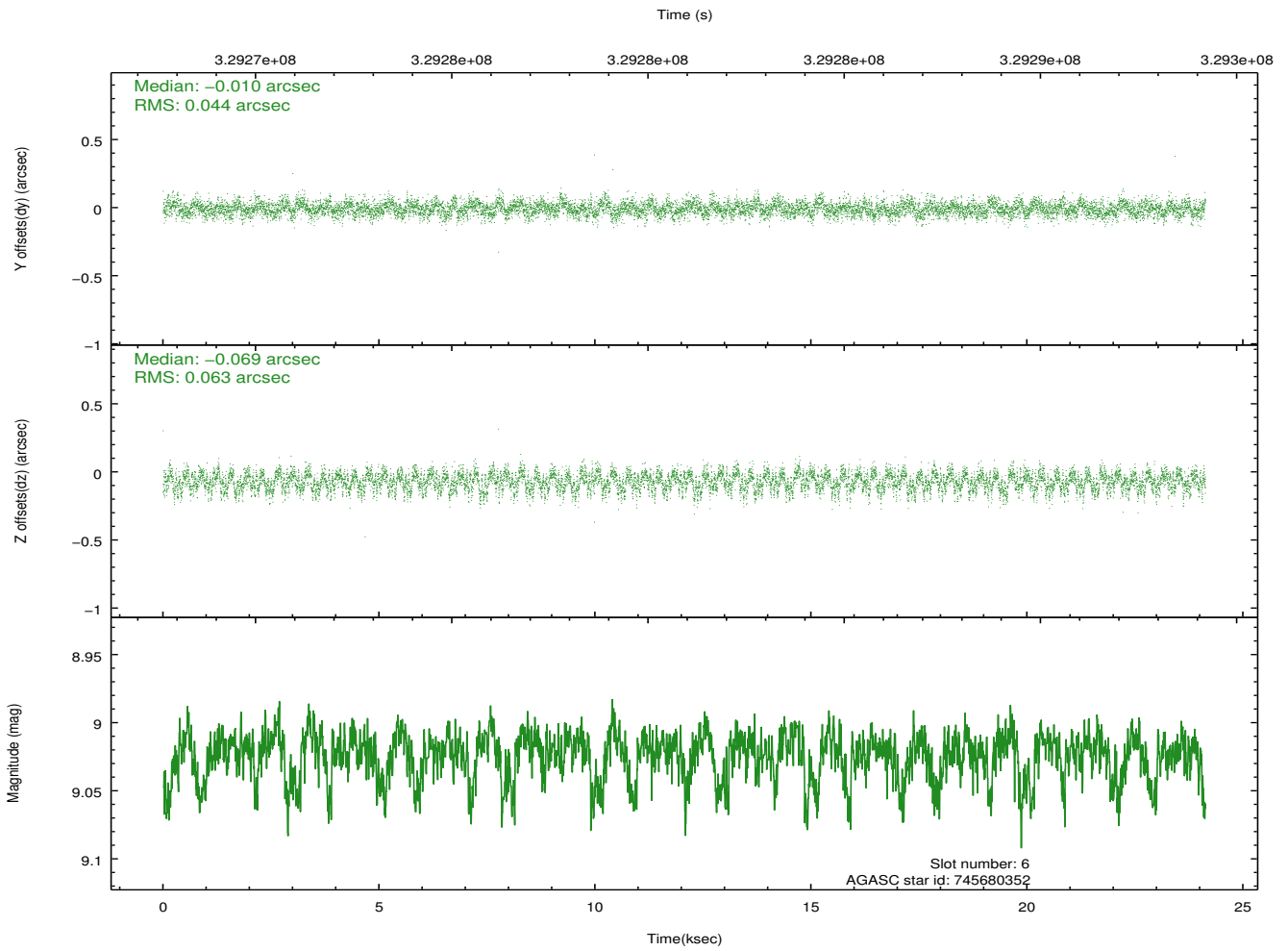
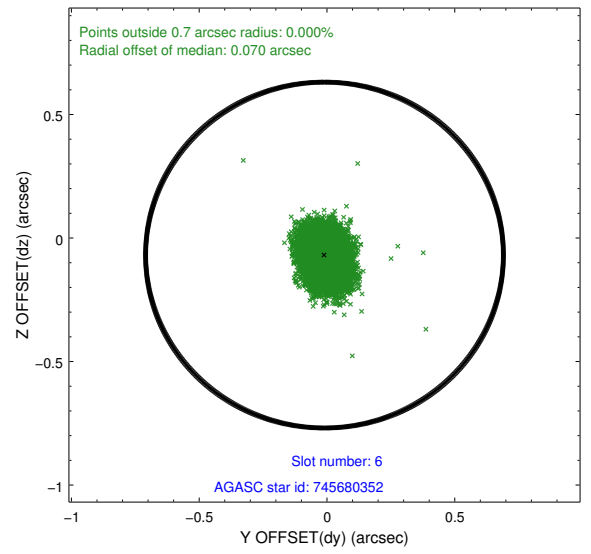
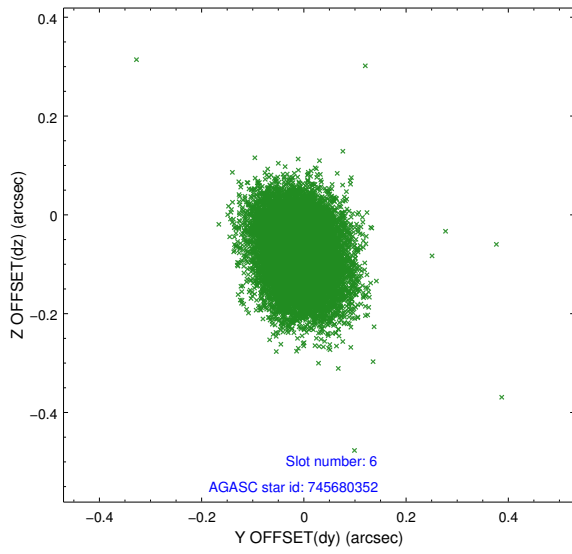
2.4.2 Slot 4



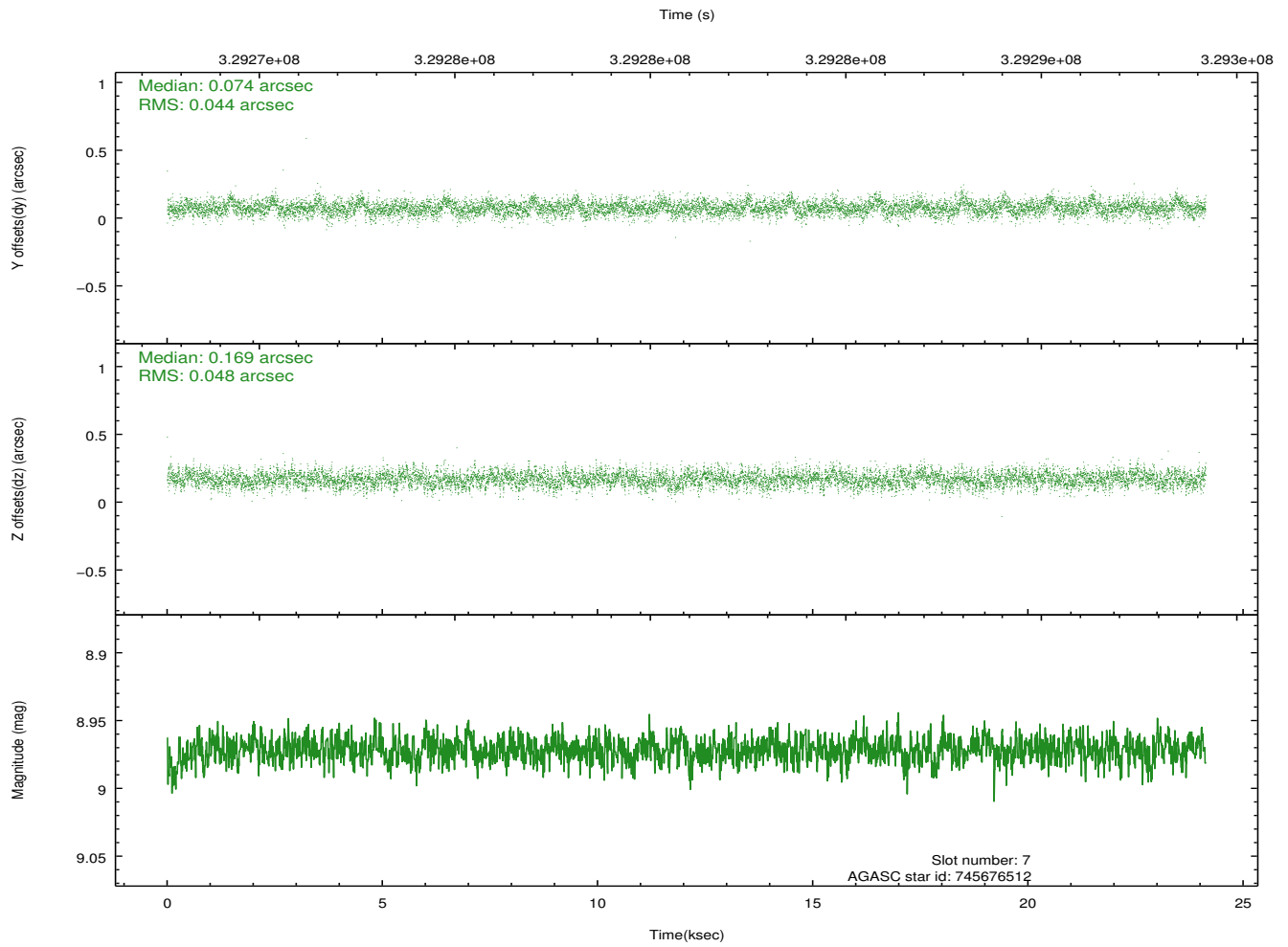
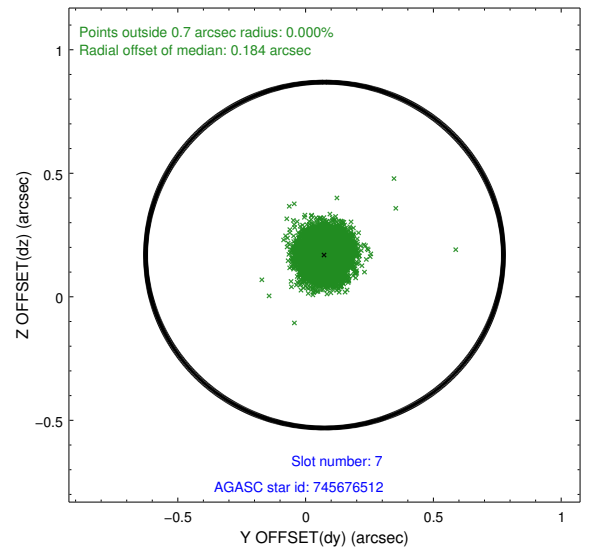
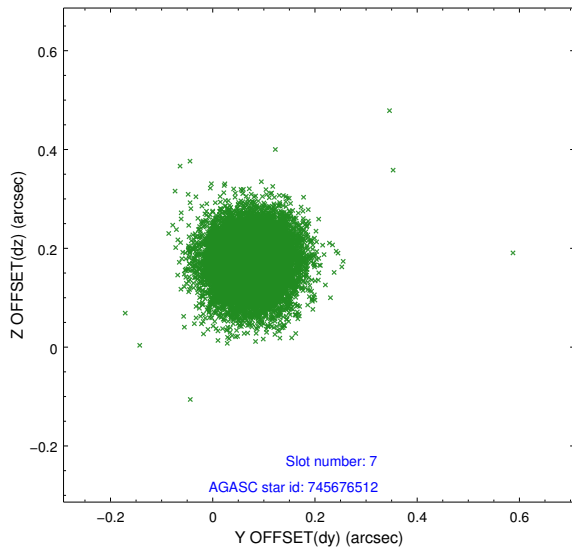
2.4.3 Slot 5



2.4.4 Slot 6

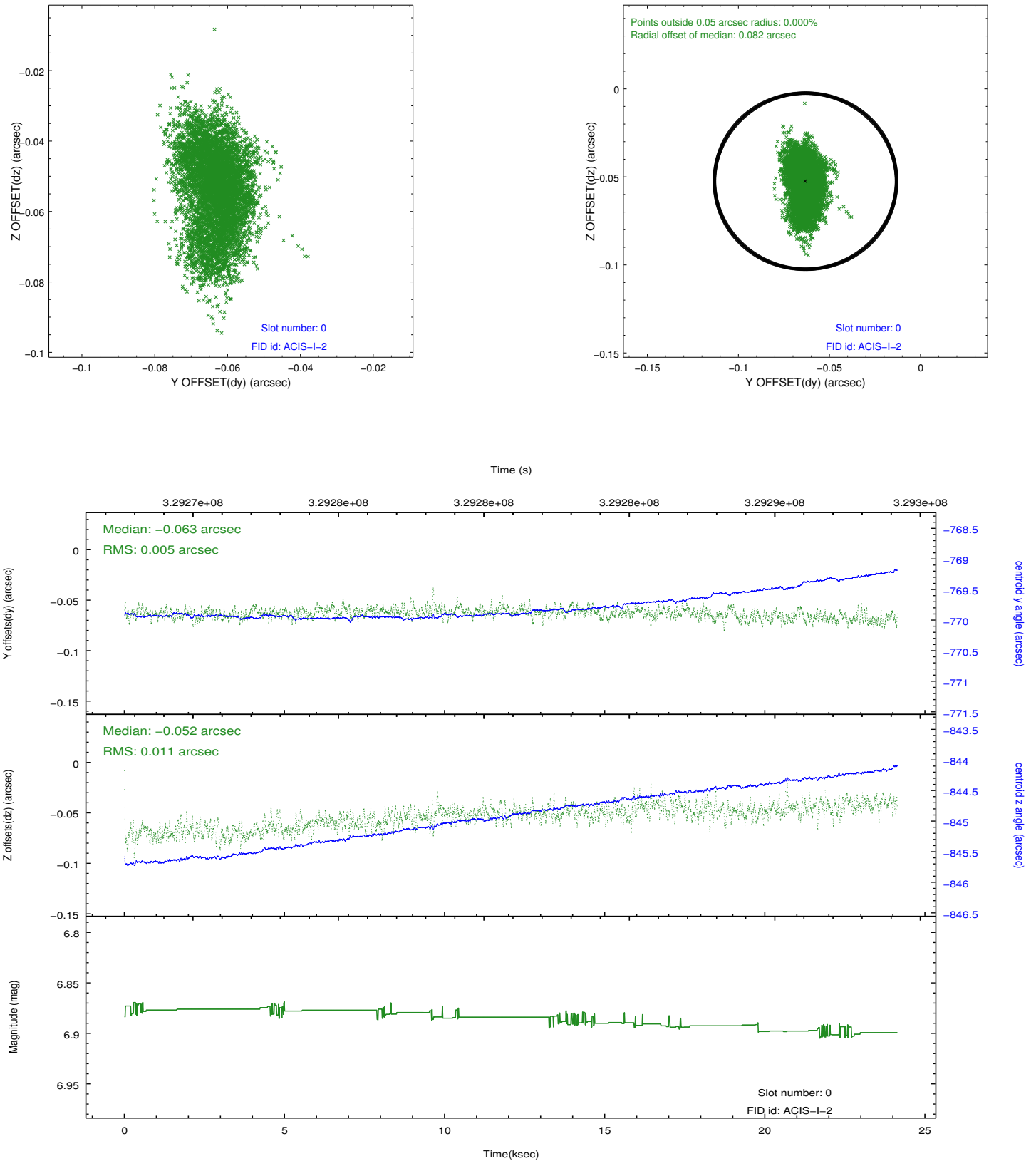


2.4.5 Slot 7

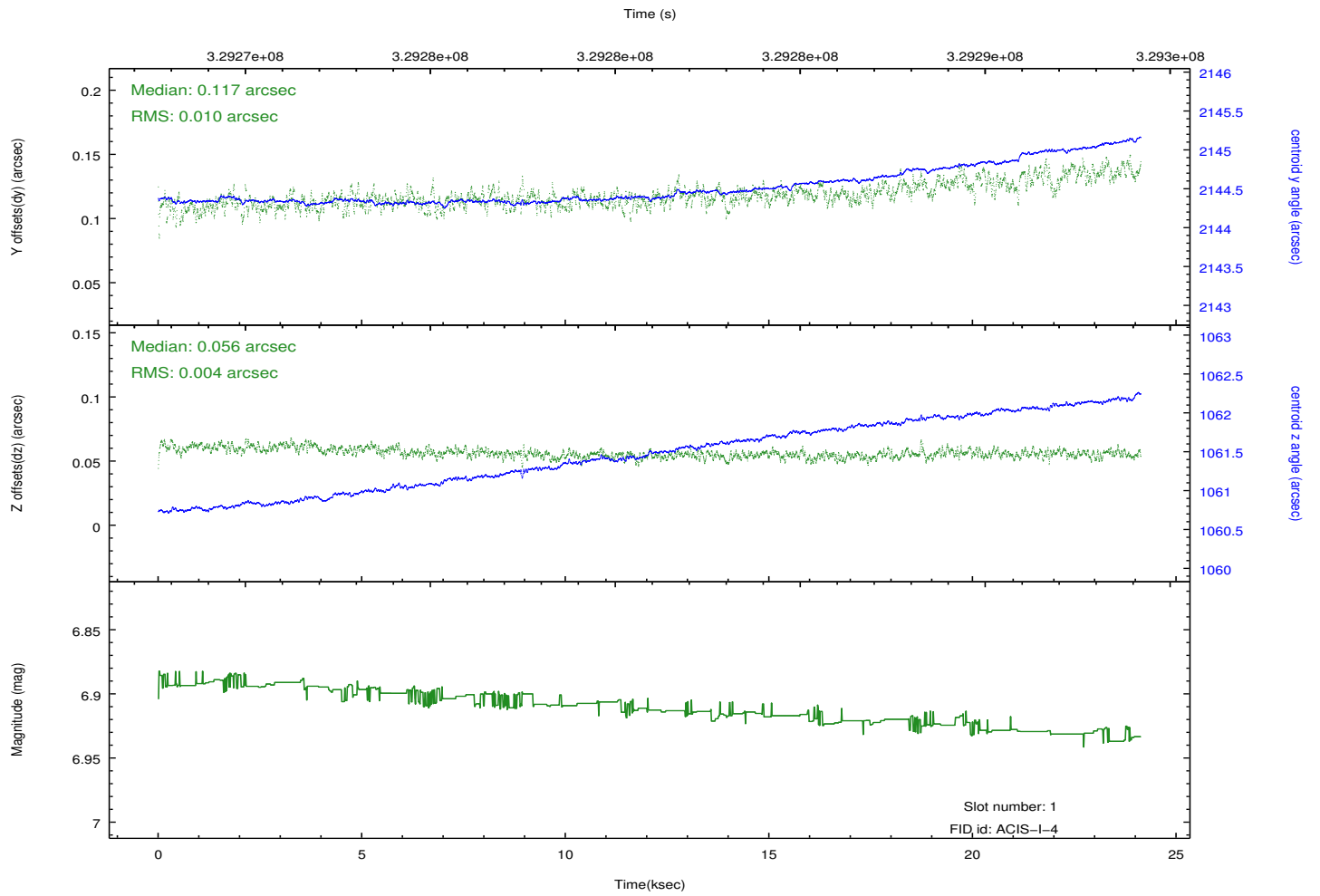
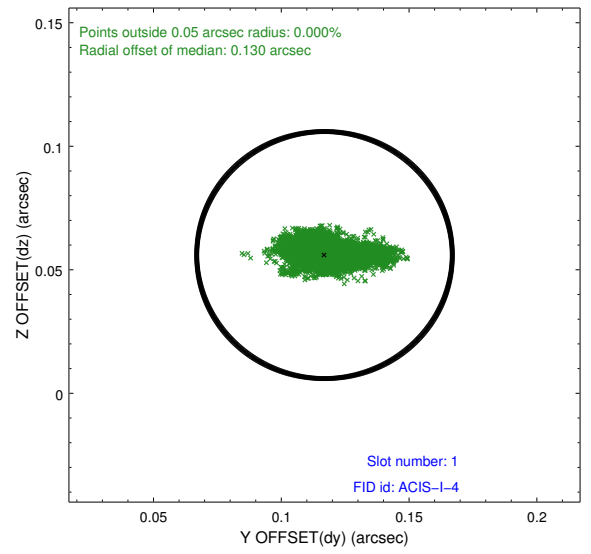
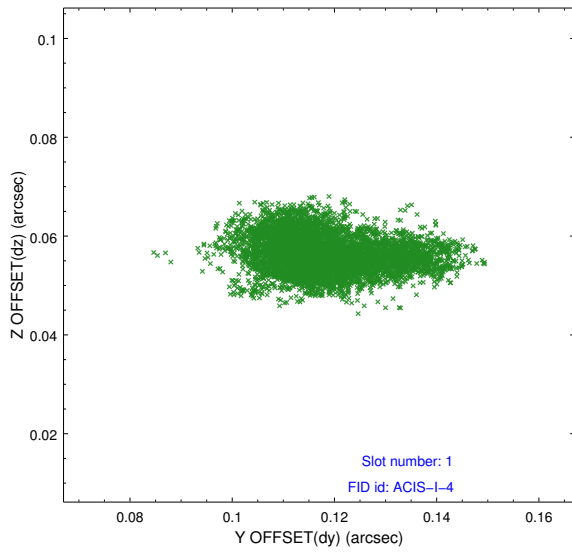


2.5 FID Slots

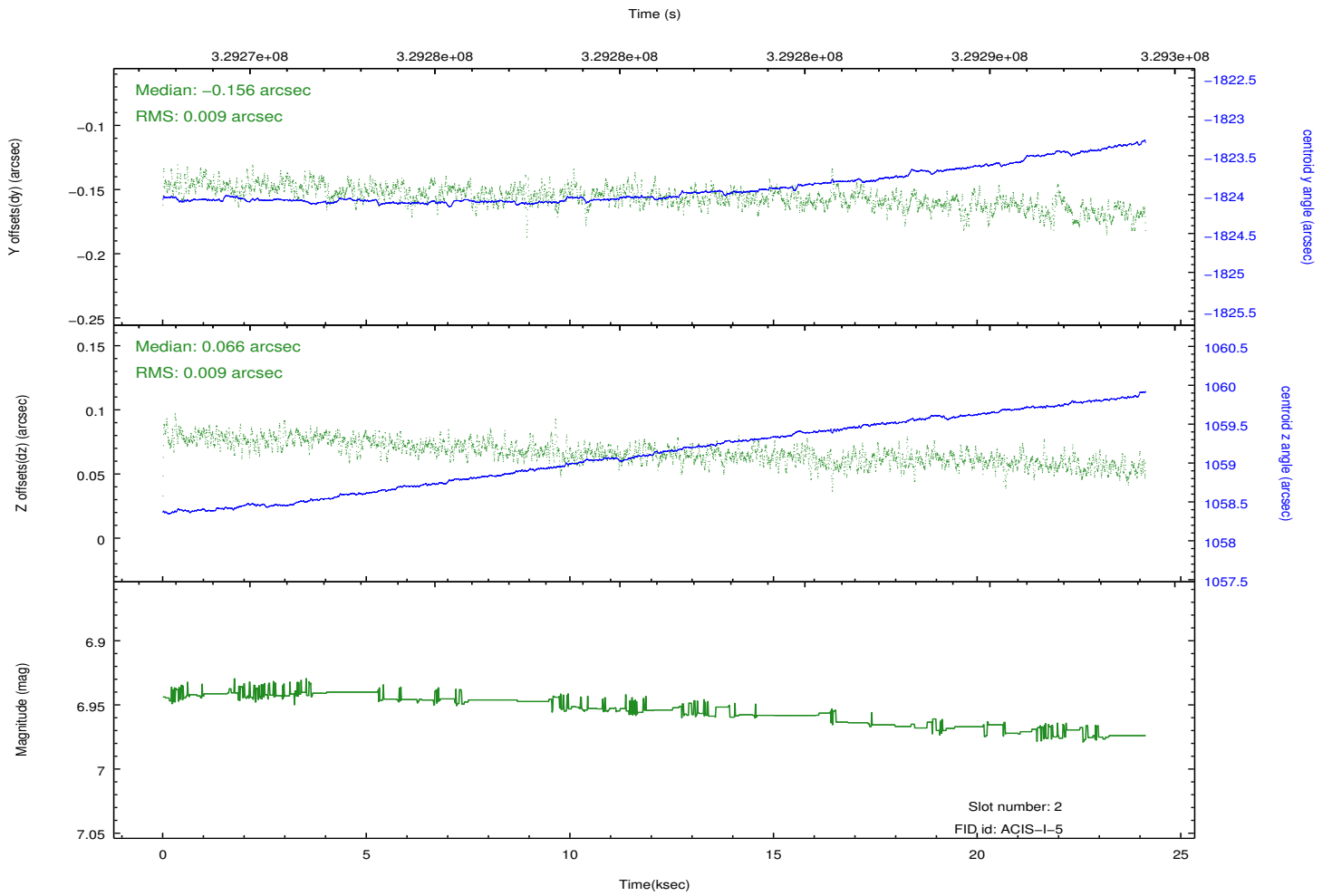
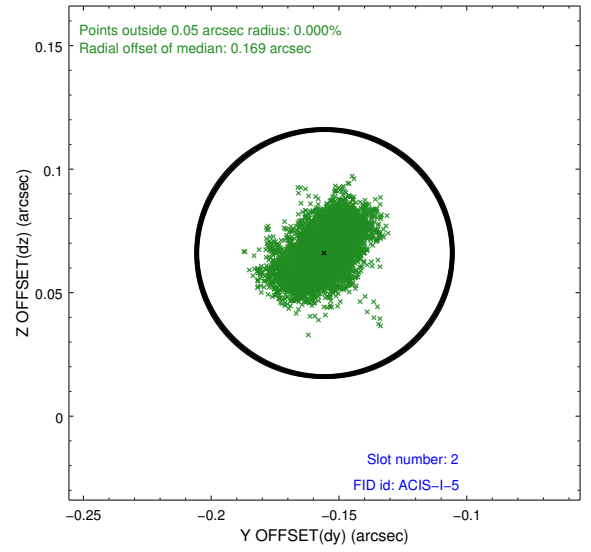
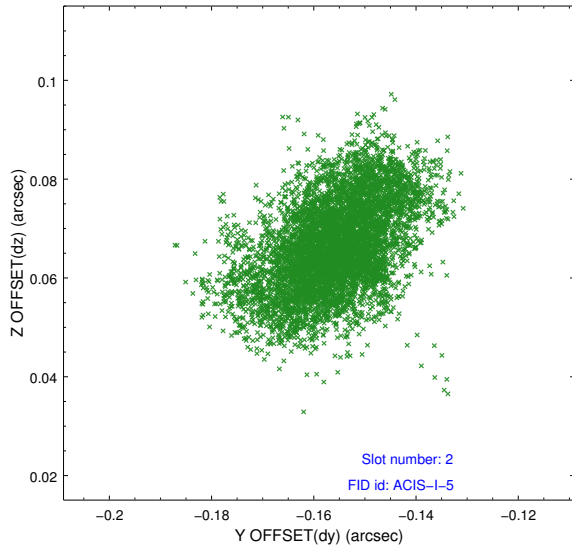
2.5.1 Slot 0



2.5.2 Slot 1



2.5.3 Slot 2



A Summary

A.1 Status

V&V Scientist	Jen Lauer
V&V Date (YYYY-MM-DD)	2012.05.22
V&V Edition	1
V&V Disposition and Status	OK
V&V Charge Time	24.1179591

A.2 Comments