

V&V Reference Report

L2 ASCDS Version : 8.4.4

Observation 9934 - L2 Version 2
Chandra X-Ray Center

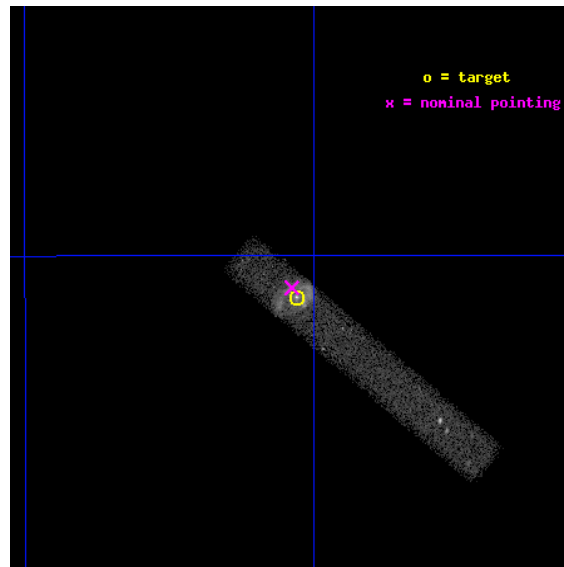
L2 Processing Date : May 28 2012

Contents

1	Front	2
2	OBI	3
2.1	OBI	3
2.1.1	Images	3
2.1.2	Bias	3
2.1.3	Parameters	4
2.1.4	Events	4
2.2	Compared Parameters	5
2.3	Aspect	6
2.4	Star Slots	9
2.4.1	Slot 3	9
2.4.2	Slot 4	10
2.4.3	Slot 5	11
2.4.4	Slot 6	12
2.4.5	Slot 7	13
2.5	FID Slots	14
2.5.1	Slot 0	14
2.5.2	Slot 1	15
2.5.3	Slot 2	16
A	Summary	17
A.1	Status	17
A.2	Comments	17

1 Front

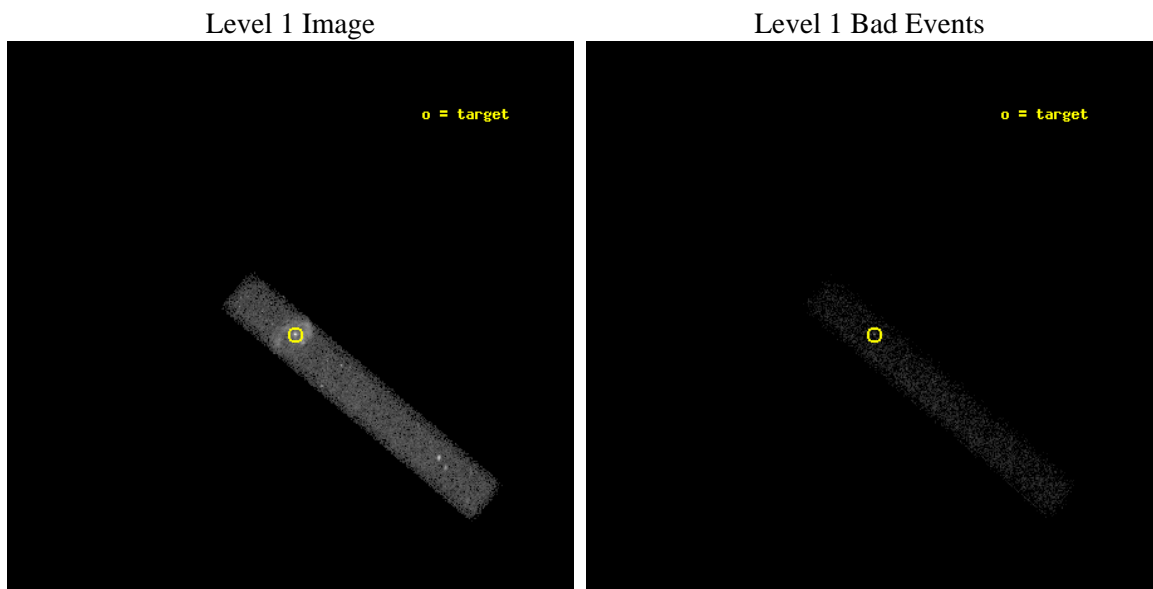
seq_num	200550	Sequence number
obs_id	9934	Observation id
title	X-ray Monitoring of Eta Car in 2009: Unveiling the Deep X-ray Minimum	Proposal title
observer	Dr. Kenji Hamaguchi	Principal investigator
object	Eta Carinae	Source name
dtcycle	0	
cycle	P	events from which exps? Prim/Second/Both
ra_targ	161.265	Observer's specified target RA [deg]
dec_targ	-59.6845	Observer's specified target Dec [deg]
ra_nom	161.26913349559	Nominal RA [deg]
dec_nom	-59.680527596356	Nominal Dec [deg]
roll_nom	40.070783876919	Nominal Roll [deg]
revision	2	Processing version of data
ontime	15681.199065328	Sum of GTIs [s]
livetime	14222.019830698	Livetime [s]
ontime7	15681.199065328	Sum of GTIs [s]
l2events	29817	Number of level 2 events



2 OBI

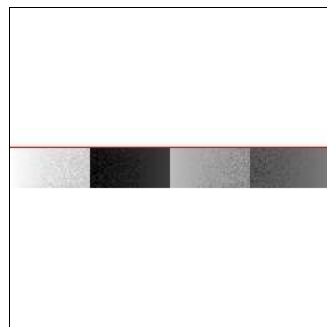
2.1 OBI

2.1.1 Images



2.1.2 Bias

Chip 7



2.1.3 Parameters

obi_num	0	Obi number	sched_exp_time	15519.000000	[s] Scheduled observation exposure time
ascdsver	8.4.4	Processing system revision	ontime	15681.199065328	Sum of GTIs [s]
caldbver	4.4.9	 	ontime7	15681.199065328	Sum of GTIs [s]
date	2012-05-29T01:40:11	Date and time of file creation	l1events	48277	Number of level 1 events
revision	2	Processing version of data			

2.1.4 Events

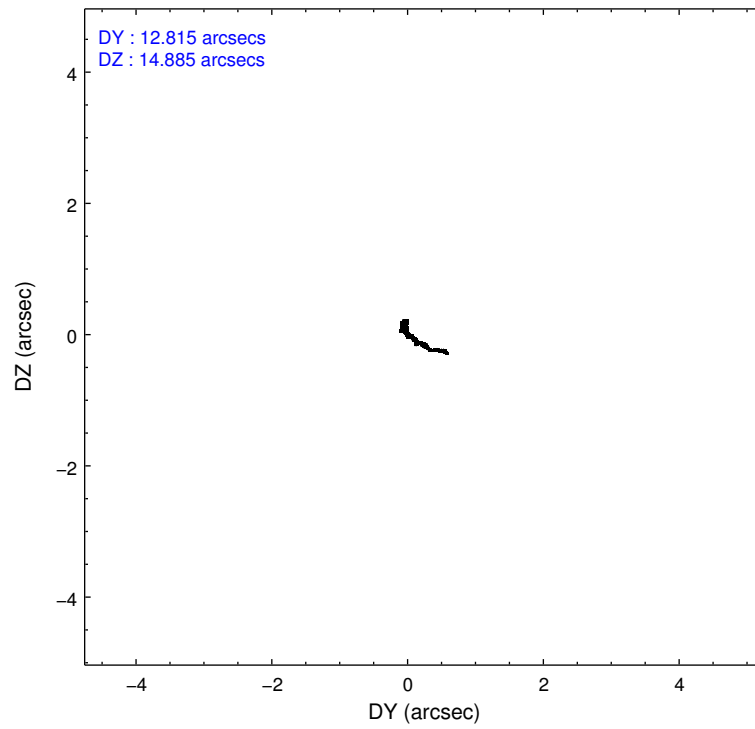
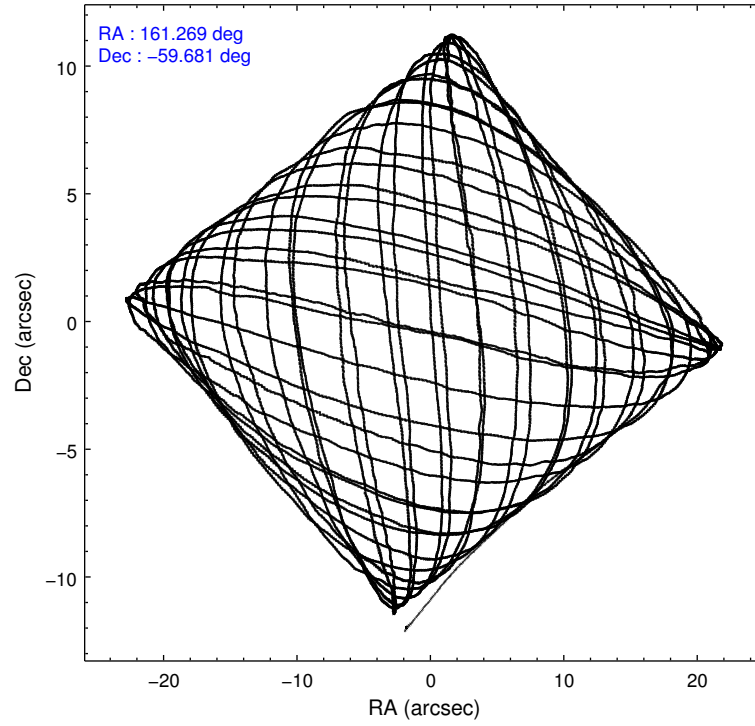
	ccd 7
level 1 events	48277
rejected events	17738
rejected %	36%

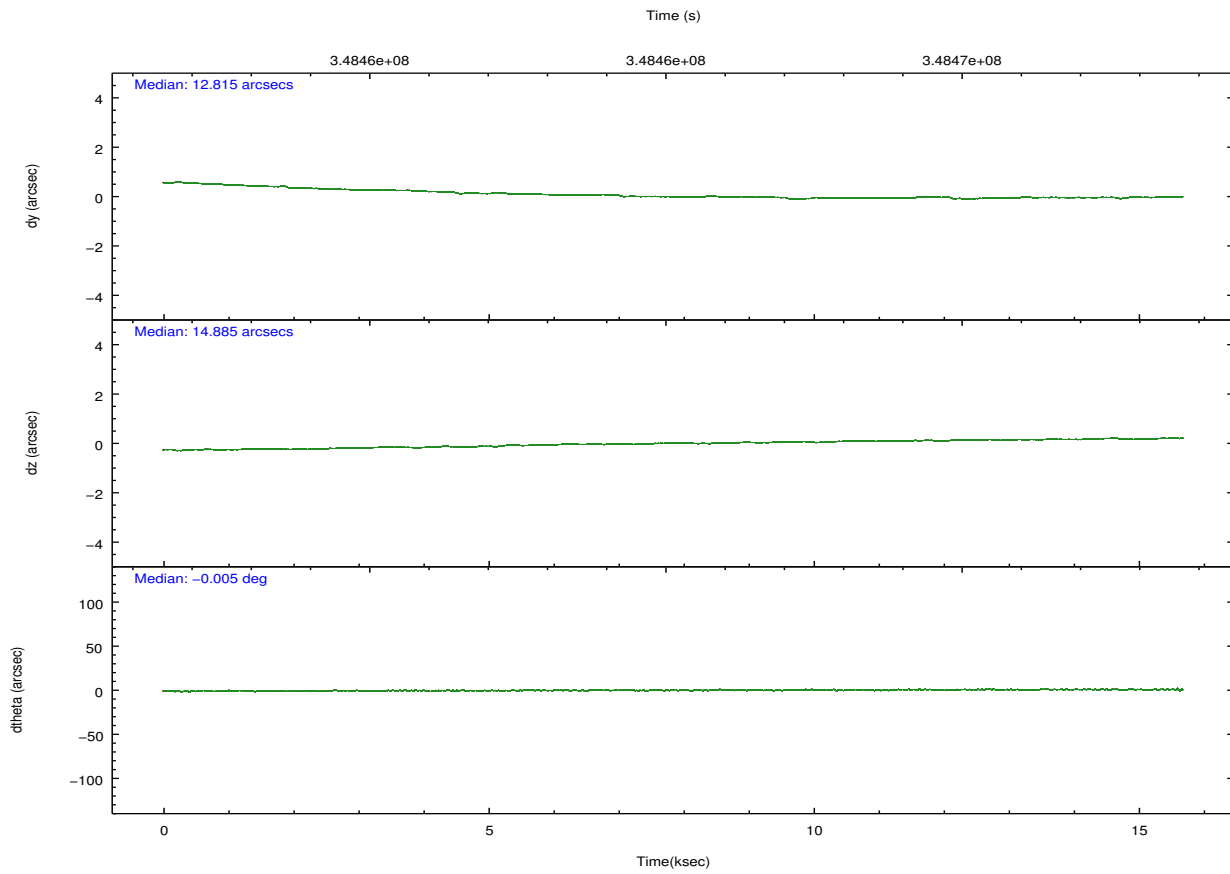
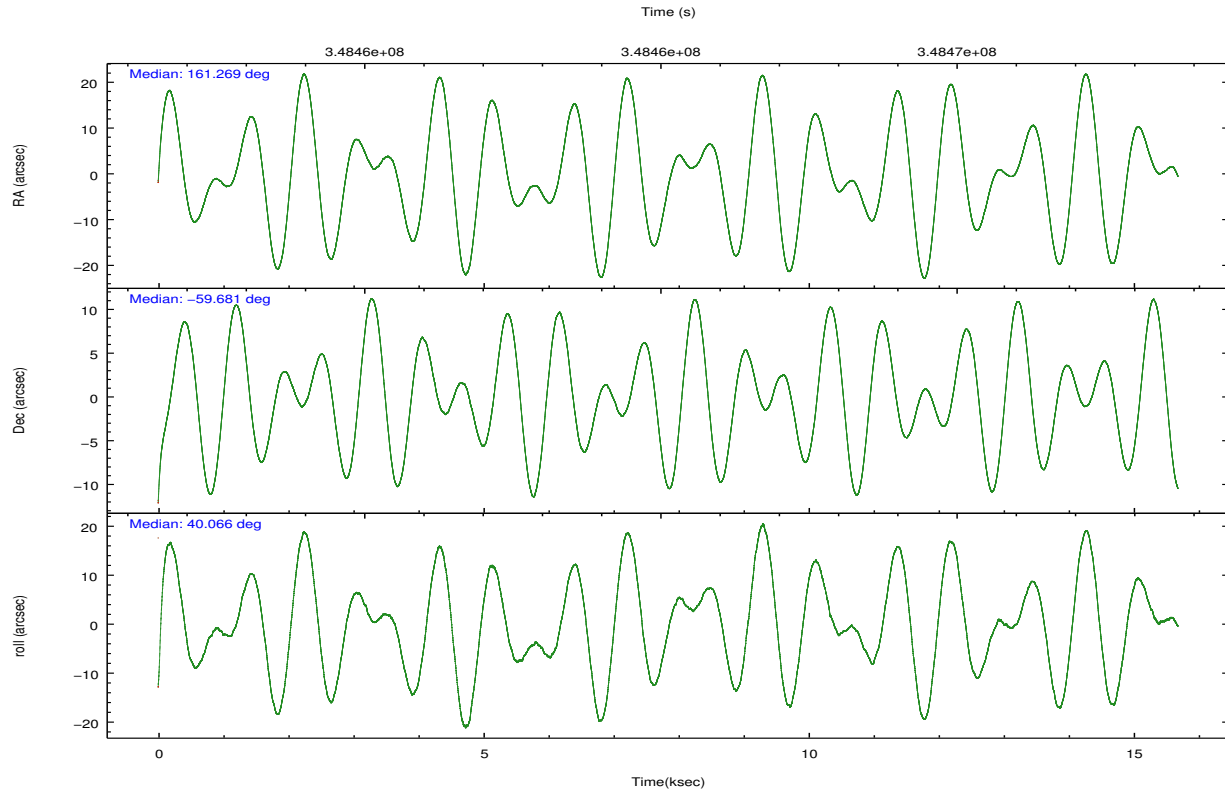
	ccd 7
grade 0 events	6617
	13%
grade 1 events	46
	0%
grade 2 events	7367
	15%
grade 3 events	3869
	8%
grade 4 events	3796
	7%
grade 5 events	3063
	6%
grade 6 events	9622
	19%
grade 7 events	13897
	28%

2.2 Compared Parameters

Parameter	Planned	Actual	Parameter	Planned	Actual
Instrument	ACIS	ACIS	Obspar format version number	7	7
Detector	ACIS-7	ACIS-7	Obspar file type	PREDICTED	ACTUAL
Grating	NONE	NONE	Obspar update status	NONE	UPDATED
Data mode	FAINT	FAINT	Number of optional ACIS chips dropped	0	0
Observation mode	POINTING	POINTING	On-chip summing requested	N	N
[deg] Pointing RA	161.251288	161.2691334955876	Subarray requested	CUSTOM	1/8
[deg] Pointing Dec	-59.706372	-59.68052759635596	Subarray start row	449	449
[deg] Pointing Roll	39.898761	40.07078387691937	Subarray row count	128	128
[s] Window start time (MET)	348019266.184000	348019266.184000	Alternating exposures requested	N	N
[s] Window stop time (MET)	350092866.184000	350092866.184000	[s] Primary exposure time	0.000000	0.4
[mm] SIM focus pos	-0.684267	-0.6828225247311905			
[mm] SIM defocus	0	0.001444936568705701			
[mm] SIM translation stage pos	-189.840023	-189.8383482136847			
[mm] SIM translation stage offset	-0.2925	-0.294174369323116			
[s] Observation start time (MET)	348457431.184000	348456417.01204			
Observation start date	2009-01-16T01:42:45	2009-01-16T01:26:57			
[s] Observation end time (MET)	348472950.184000	348473888.1379			
Observation end date	2009-01-16T06:01:24	2009-01-16T06:18:08			
Read mode	TIMED	TIMED			

2.3 Aspect



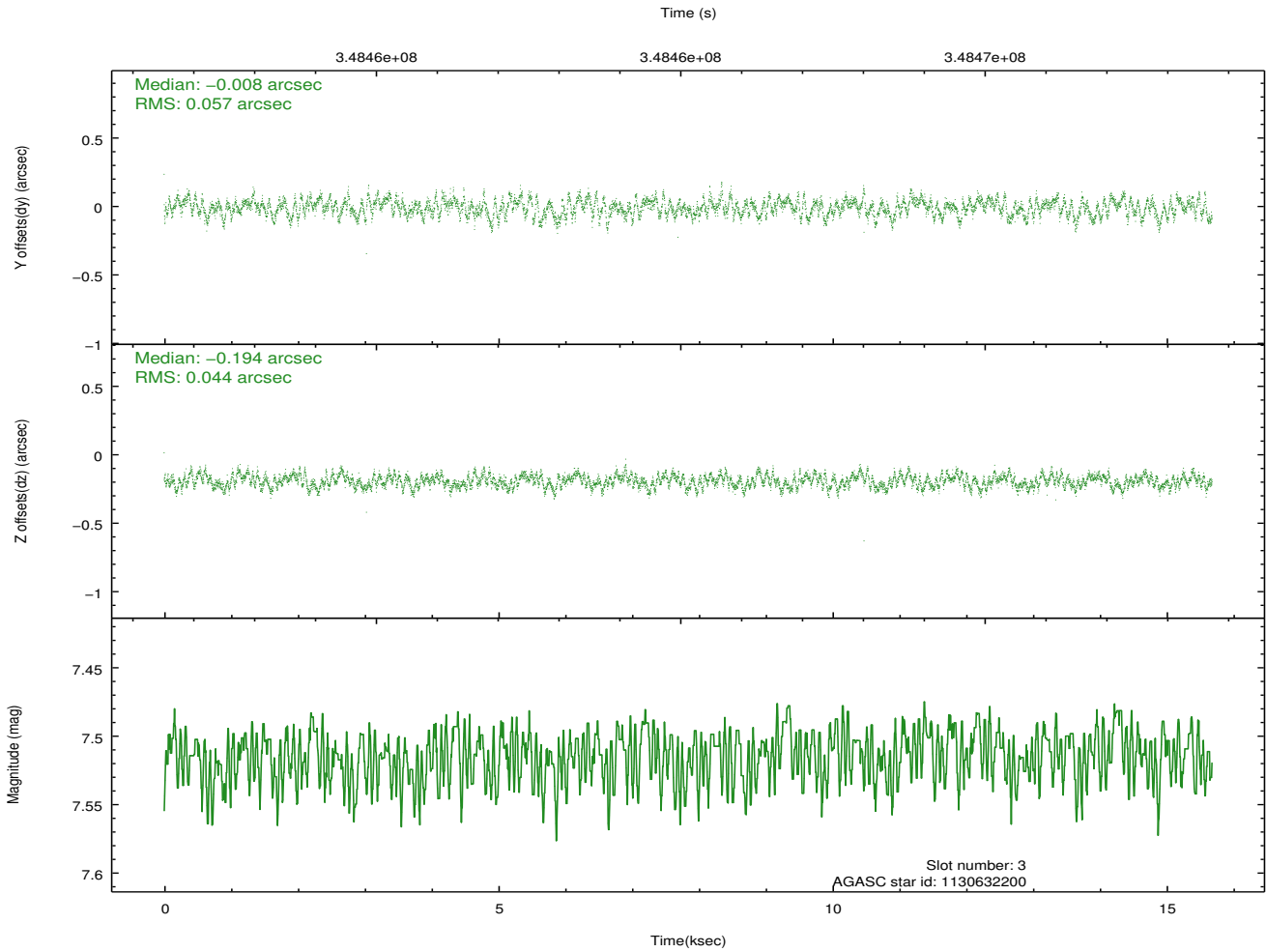
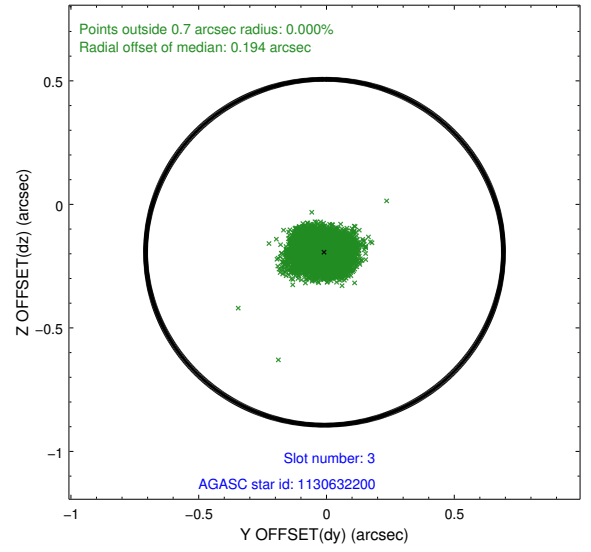
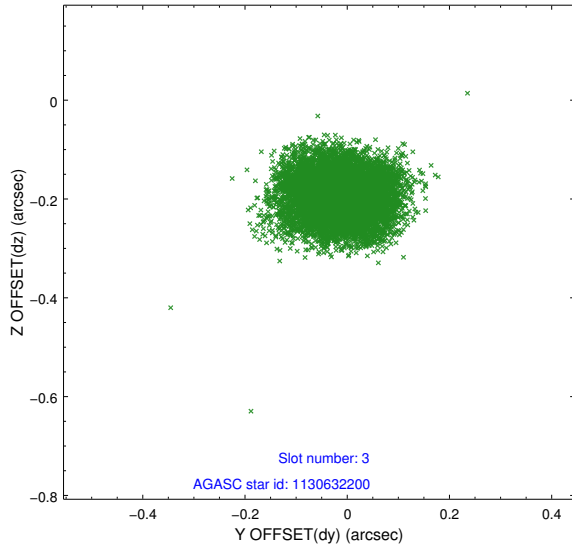


Slot Statistics

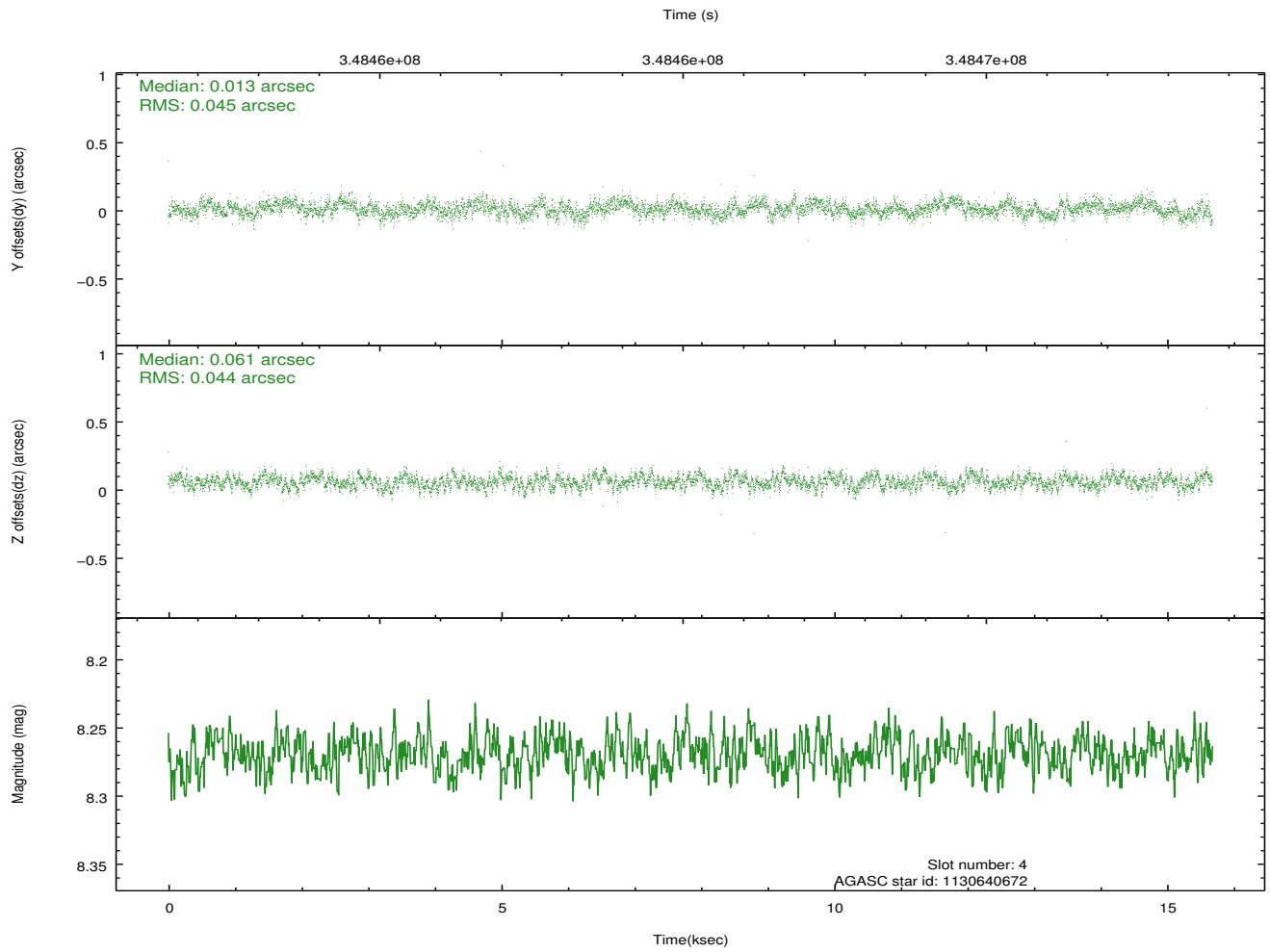
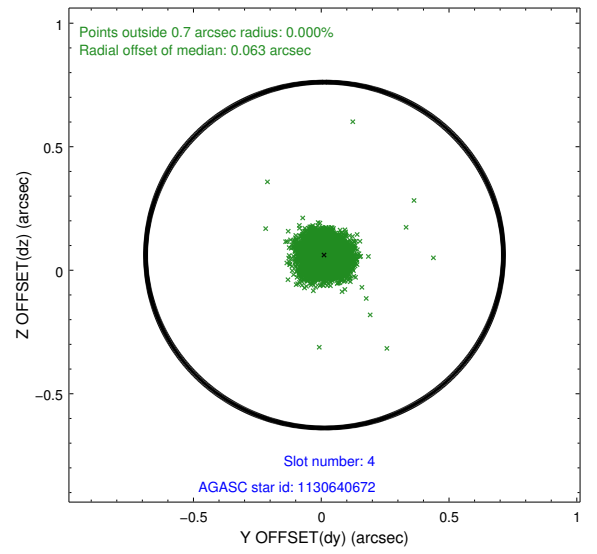
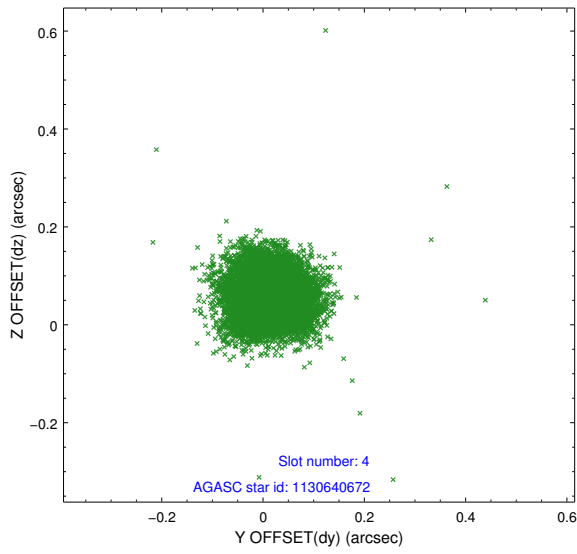
slot	status	id	mag	n_pts	med_dy	med_dz	dr1	dr2	ra	dec	mean_y	mean_z
0	FID	ACIS-S-1	6.96	3826	0.064	-0.085	0.008	0.015	0.000000	0.000000	930.28	-1738.18
1	FID	ACIS-S-4	6.97	3826	0.113	0.033	0.013	0.028	0.000000	0.000000	2147.90	165.80
2	FID	ACIS-S-5	7.00	3826	-0.205	0.065	0.011	0.023	0.000000	0.000000	-1818.49	159.75
3	GUIDE	1130632200	7.51	7647	-0.008	-0.194	0.077	0.121	161.433843	-59.407820	945.80	609.81
4	GUIDE	1130640672	8.27	7646	0.013	0.061	0.066	0.105	162.096044	-59.540805	1559.04	-538.56
5	GUIDE	1130642000	7.96	7649	-0.000	0.089	0.077	0.135	162.836255	-59.743891	2097.37	-1973.53
6	GUIDE	1130643264	6.64	7651	-0.037	-0.145	0.075	0.128	160.322990	-59.676912	-1233.63	1154.27
7	GUIDE	1174012960	7.15	7650	0.023	0.186	0.058	0.097	160.855674	-60.332270	-1987.37	-1277.71

2.4 Star Slots

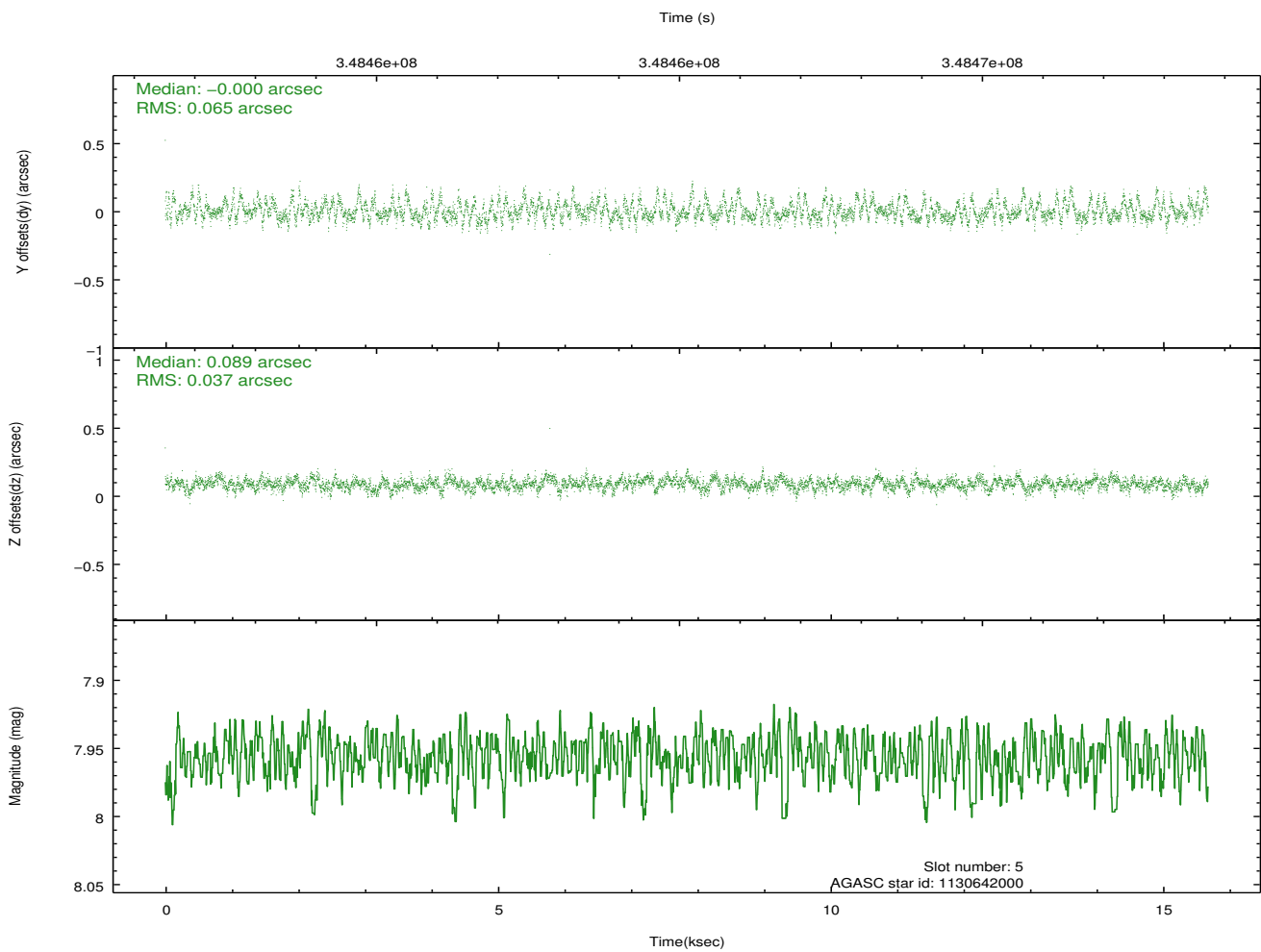
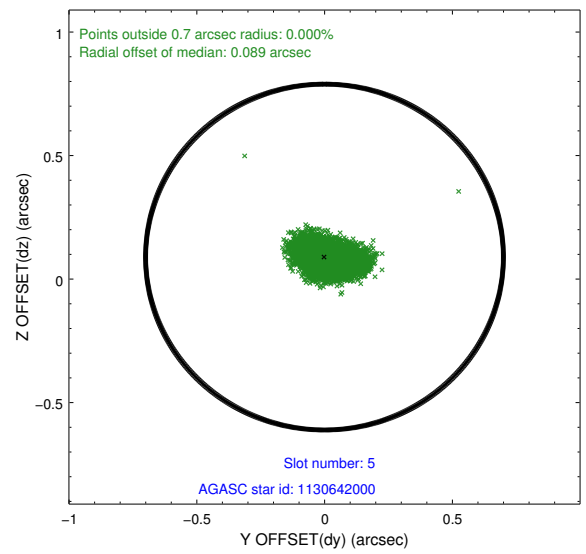
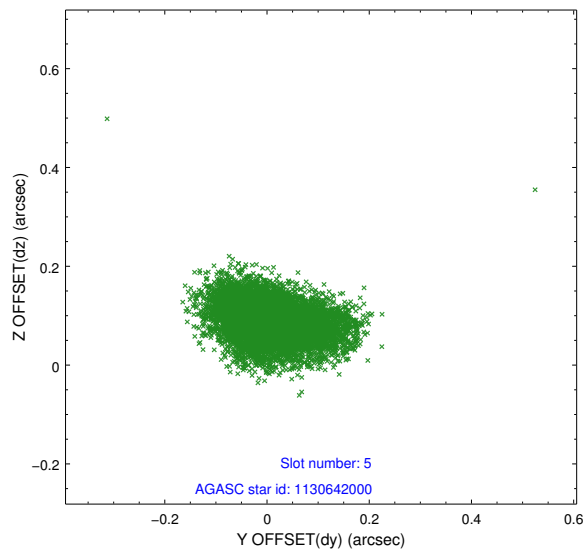
2.4.1 Slot 3



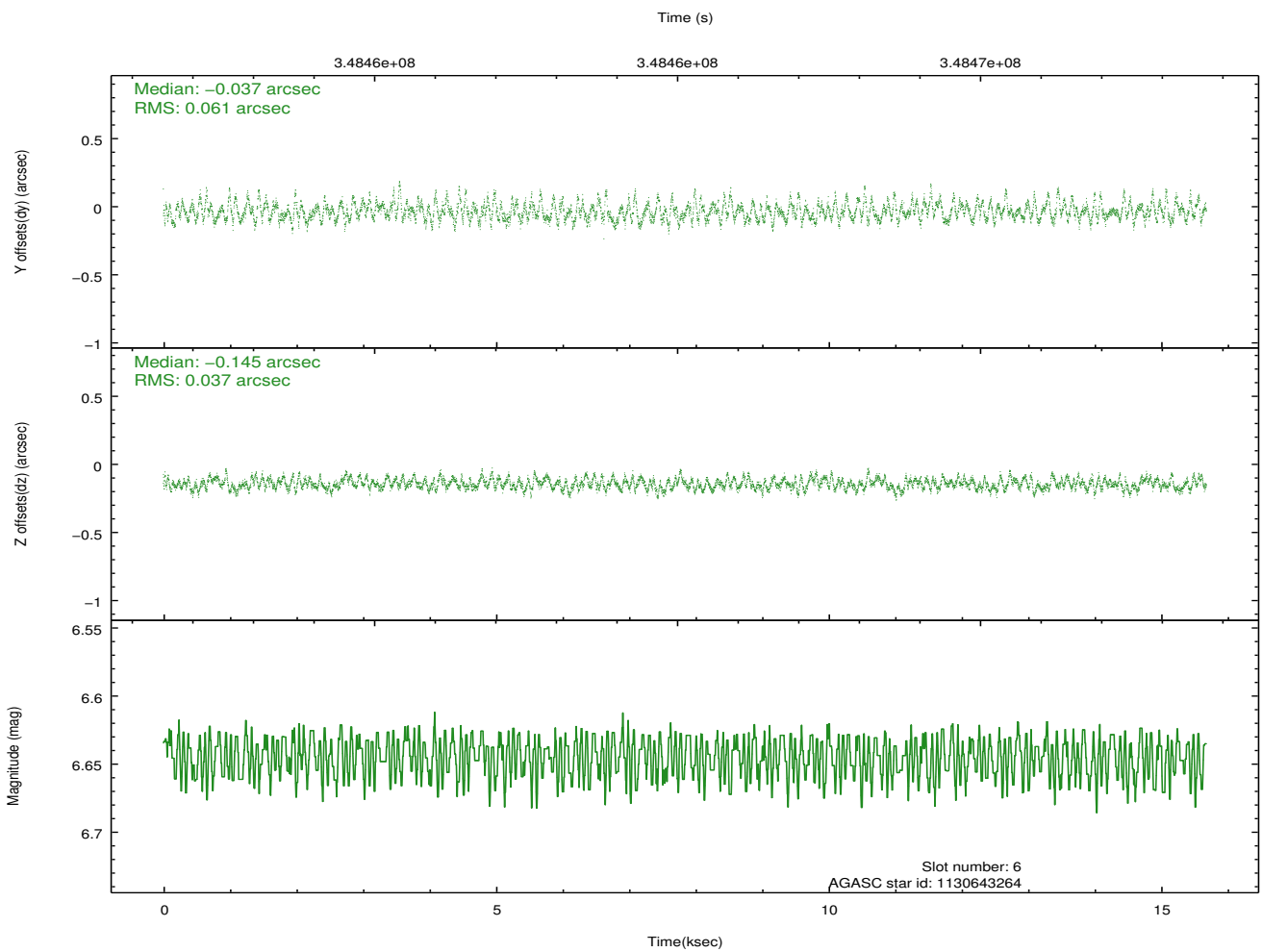
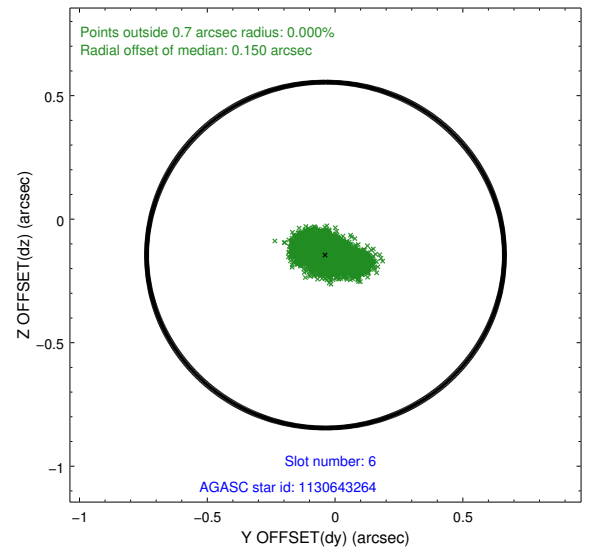
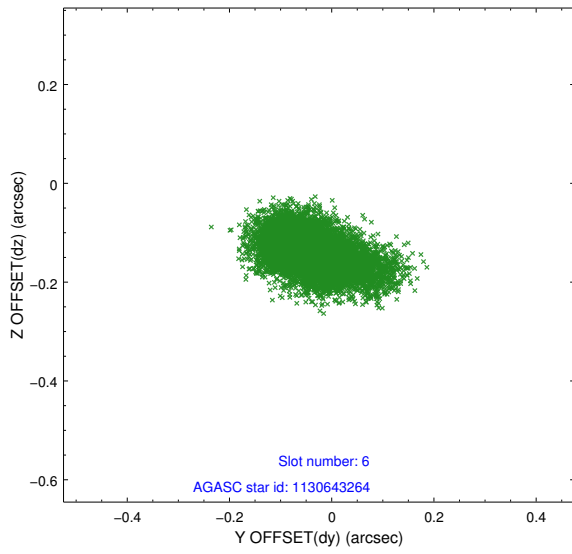
2.4.2 Slot 4



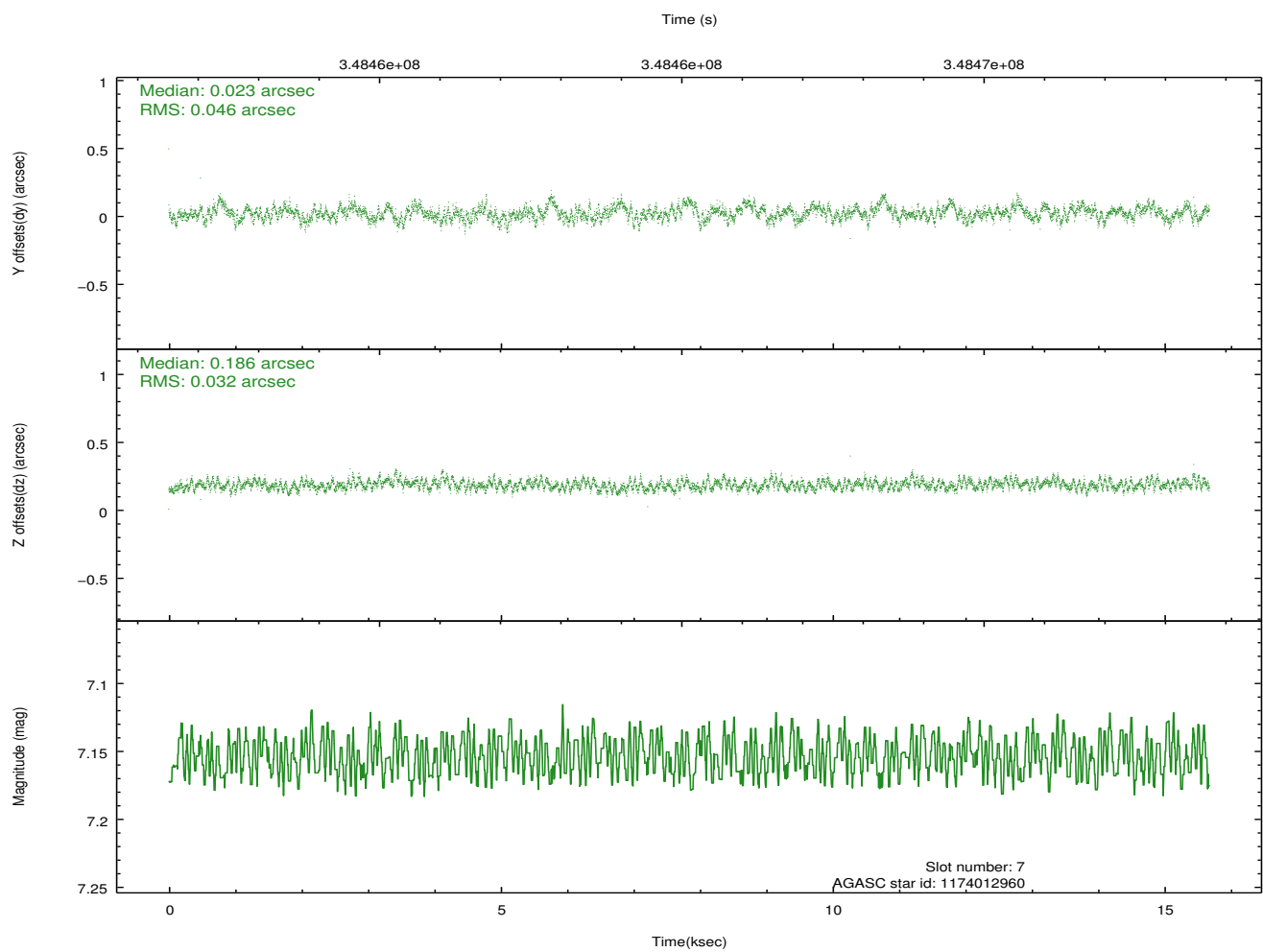
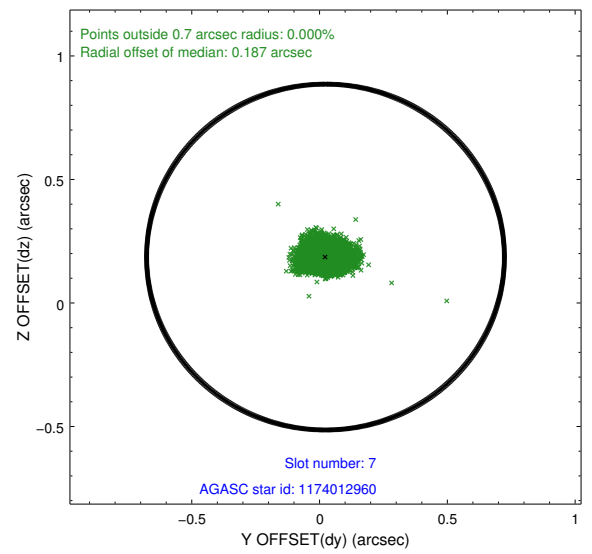
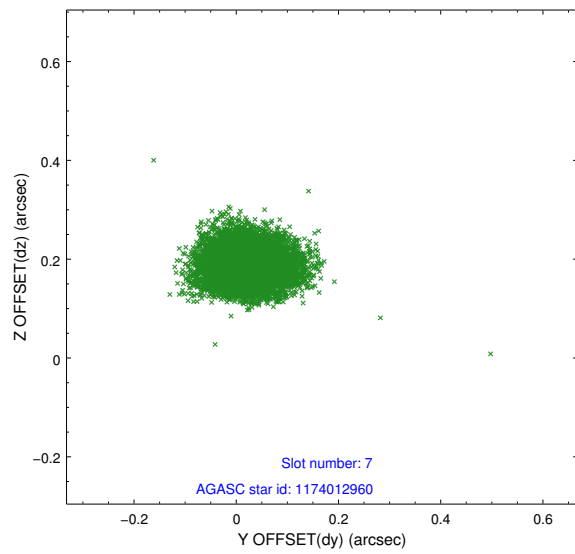
2.4.3 Slot 5



2.4.4 Slot 6

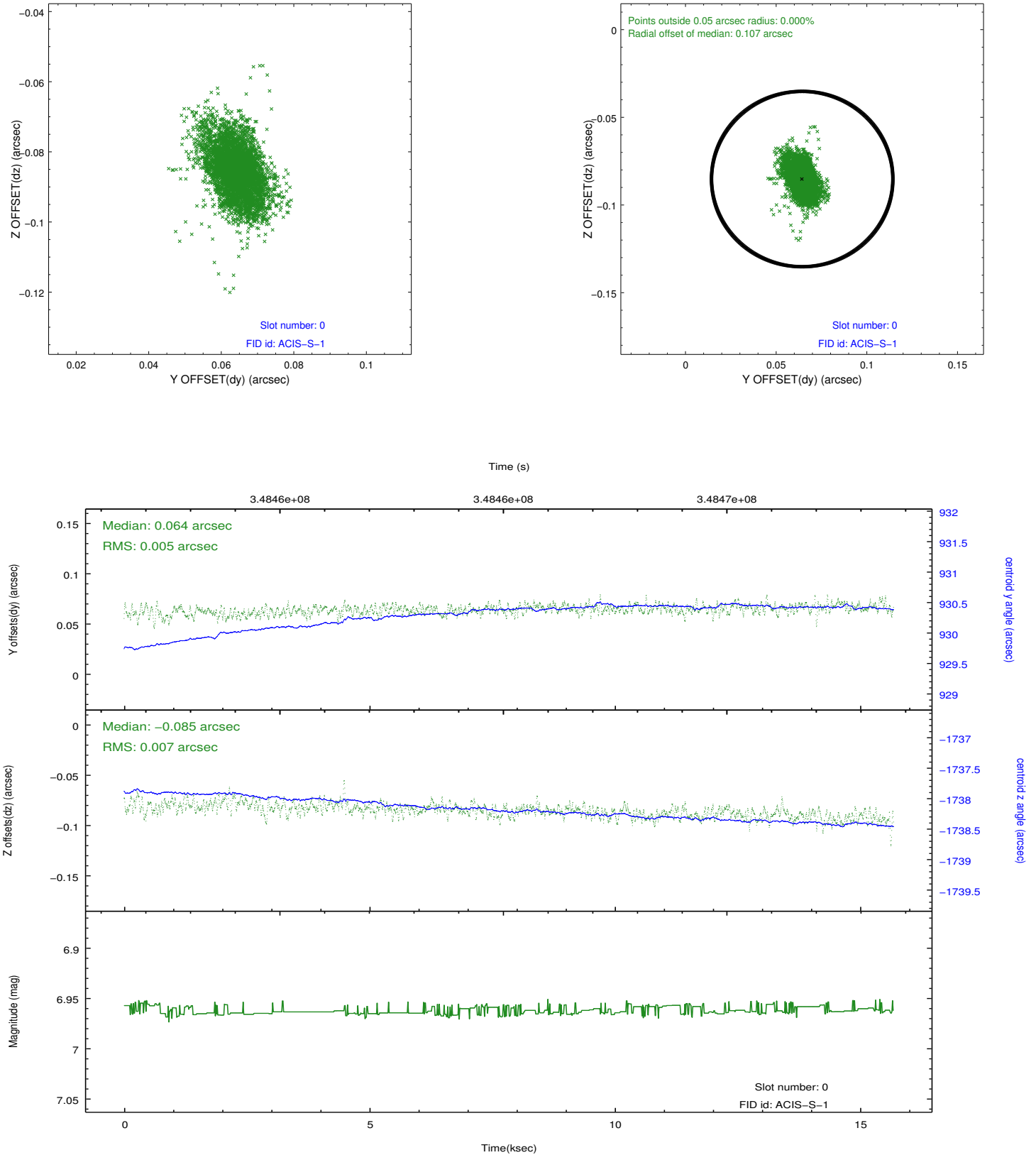


2.4.5 Slot 7

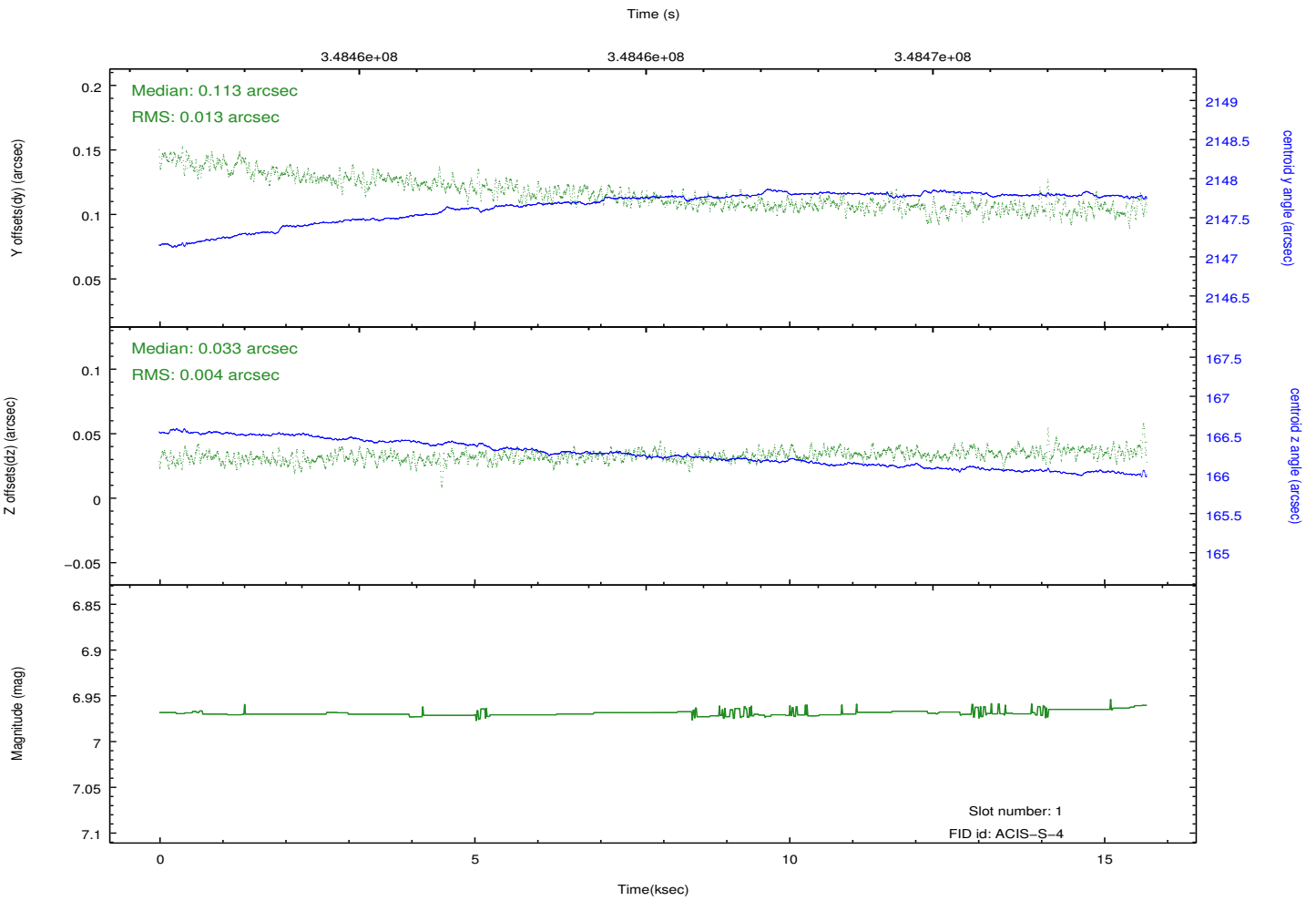
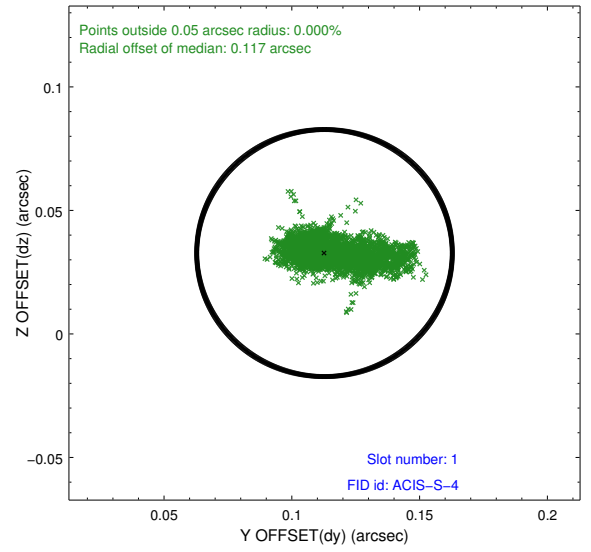
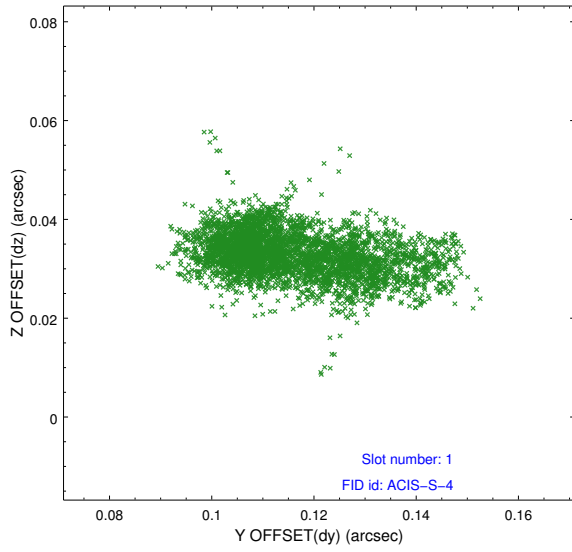


2.5 FID Slots

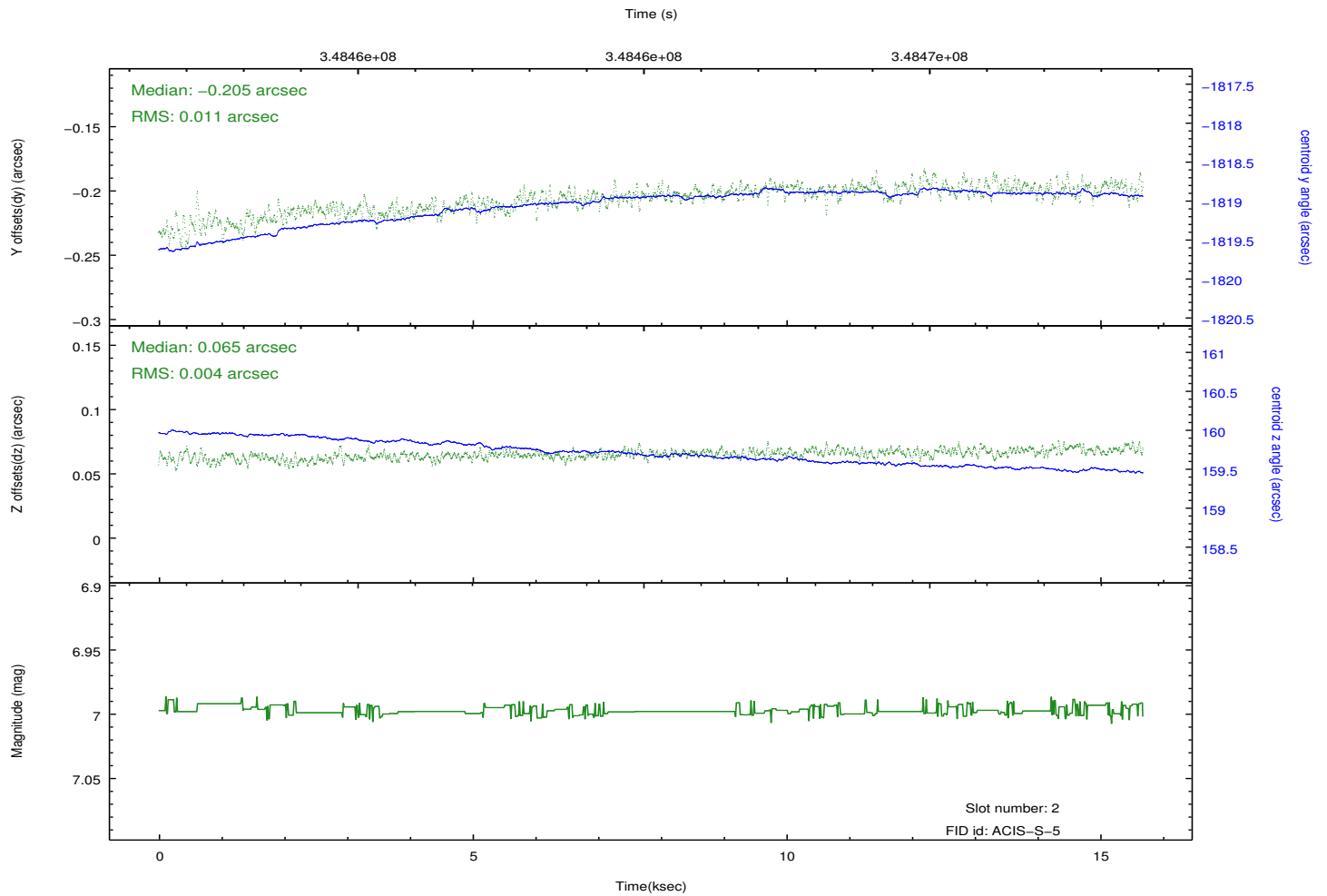
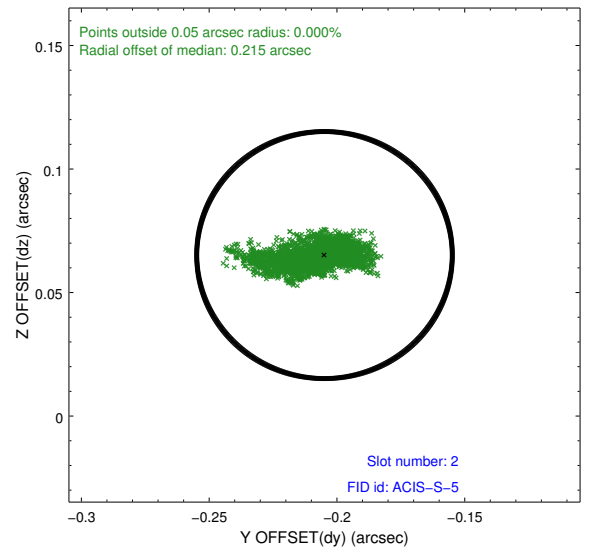
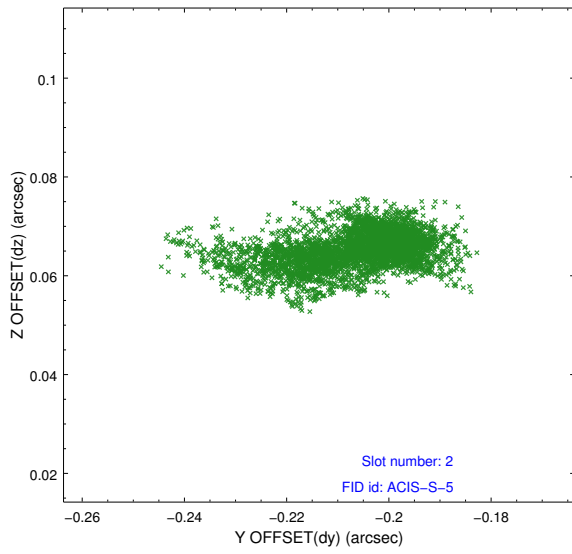
2.5.1 Slot 0



2.5.2 Slot 1



2.5.3 Slot 2



A Summary

A.1 Status

V&V Scientist	Jen Lauer
V&V Date (YYYY-MM-DD)	2012.06.04
V&V Edition	1
V&V Disposition and Status	OK
V&V Charge Time	15.681199

A.2 Comments

Joint Proposal: XMM. Window constraint met.