

V&V Reference Report

L2 ASCDS Version : 8.4.5

Observation 10135 - L2 Version 3
Chandra X-Ray Center

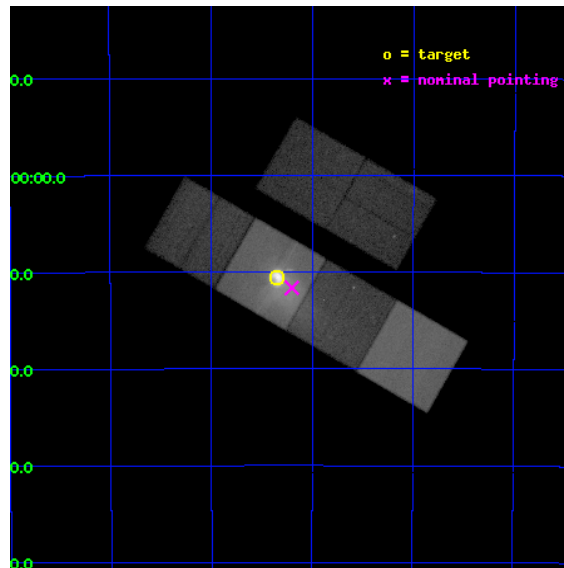
L2 Processing Date : Jun 29 2012

Contents

1	Front	2
2	OBI	3
2.1	OBI	3
2.1.1	Images	3
2.1.2	Bias	3
2.1.3	Parameters	4
2.1.4	Events	4
2.2	Compared Parameters	5
2.3	Aspect	6
2.4	Star Slots	9
2.4.1	Slot 3	9
2.4.2	Slot 4	10
2.4.3	Slot 5	11
2.4.4	Slot 6	12
2.4.5	Slot 7	13
2.5	FID Slots	14
2.5.1	Slot 0	14
2.5.2	Slot 1	15
2.5.3	Slot 2	16
A	Summary	17
A.1	Status	17
A.2	Comments	17

1 Front

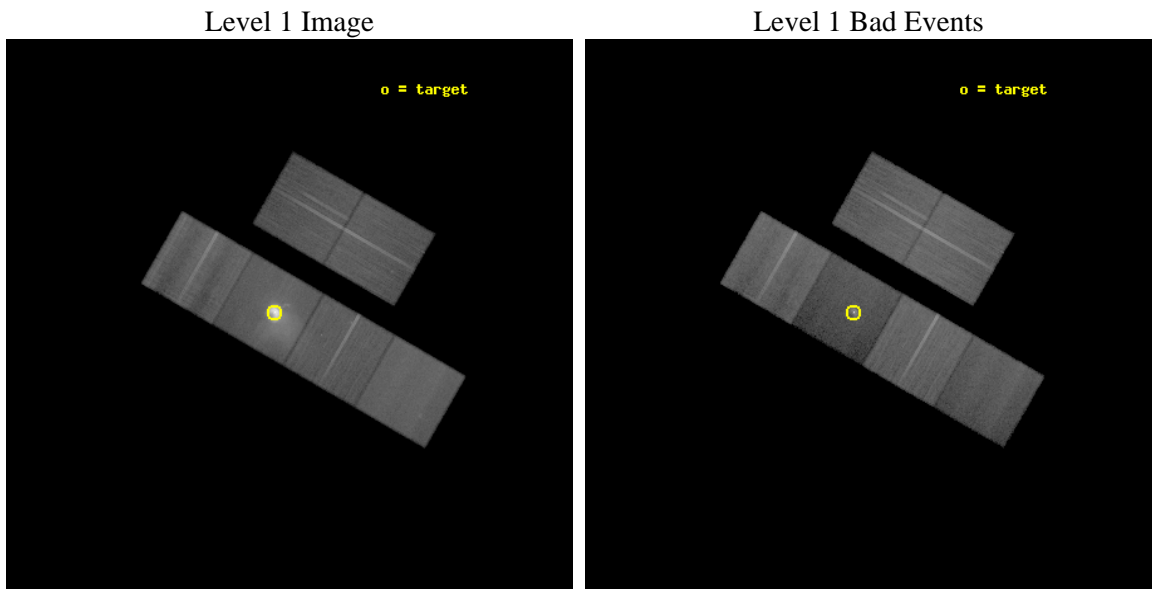
seq_num	501062	Sequence number
obs_id	10135	Observation id
title	The Unique Dynamical Vela Pulsar Wind Nebula	Proposal title
observer	Dr. George Pavlov	Principal investigator
object	Vela PWN	Source name
dtycycle	0	
cycle	P	events from which exps? Prim/Second/Both
ra_targ	128.83625	Observer's specified target RA [deg]
dec_targ	-45.176583	Observer's specified target Dec [deg]
ra_nom	128.80012235612	Nominal RA [deg]
dec_nom	-45.194070622583	Nominal Dec [deg]
roll_nom	209.87473039909	Nominal Roll [deg]
revision	3	Processing version of data
ontime	40044.799850881	Sum of GTIs [s]
liveltime	39537.728483086	Livetime [s]
ontime2	40044.799850881	Sum of GTIs [s]
ontime3	40044.799850881	Sum of GTIs [s]
ontime5	40044.799850881	Sum of GTIs [s]
ontime6	40044.799850881	Sum of GTIs [s]
ontime7	40044.799850881	Sum of GTIs [s]
ontime8	40044.799850881	Sum of GTIs [s]
l2events	1025328	Number of level 2 events



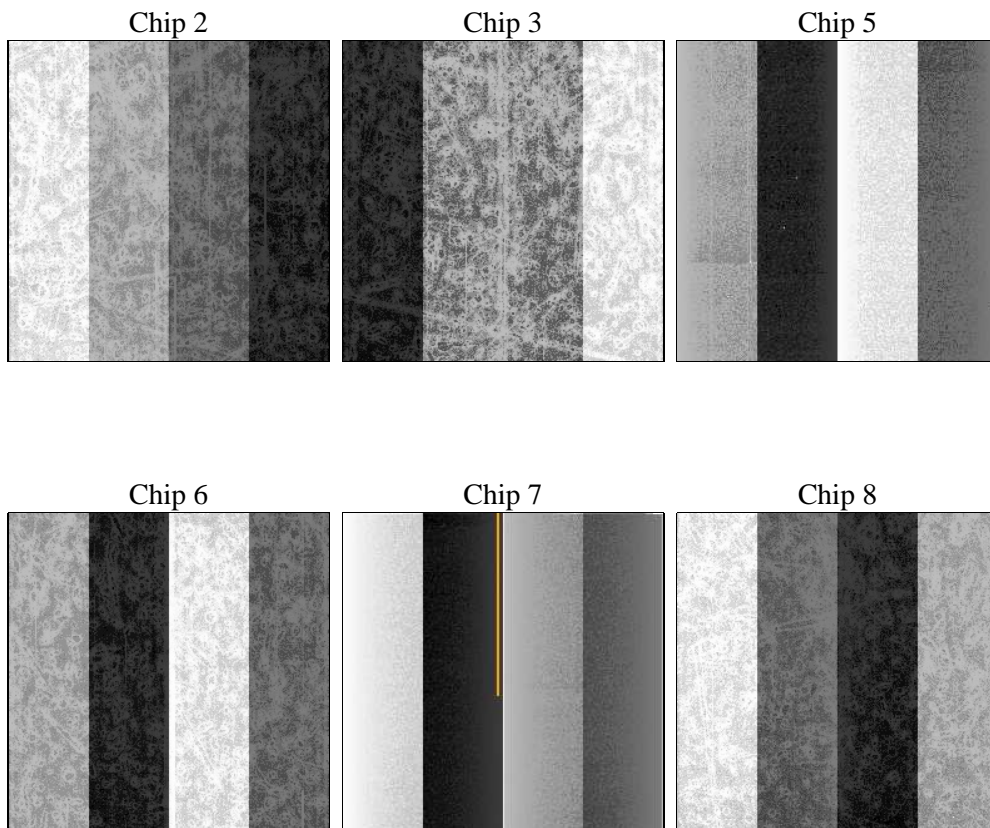
2 OBI

2.1 OBI

2.1.1 Images



2.1.2 Bias



2.1.3 Parameters

obi_num	1	Obi number	sched_exp_time	40000.000000	[s] Scheduled observation exposure time
ascdsver	8.4.5	Processing system revision	ontime	40044.799850881	Sum of GTIs [s]
caldbver	4.5.0	 	ontime2	40044.799850881	Sum of GTIs [s]
date	2012-06-29T11:14:08	Date and time of file creation	ontime3	40044.799850881	Sum of GTIs [s]
revision	3	Processing version of data	ontime5	40044.799850881	Sum of GTIs [s]
			ontime6	40044.799850881	Sum of GTIs [s]
			ontime7	40044.799850881	Sum of GTIs [s]
			ontime8	40044.799850881	Sum of GTIs [s]
			l1events	2346950	Number of level 1 events

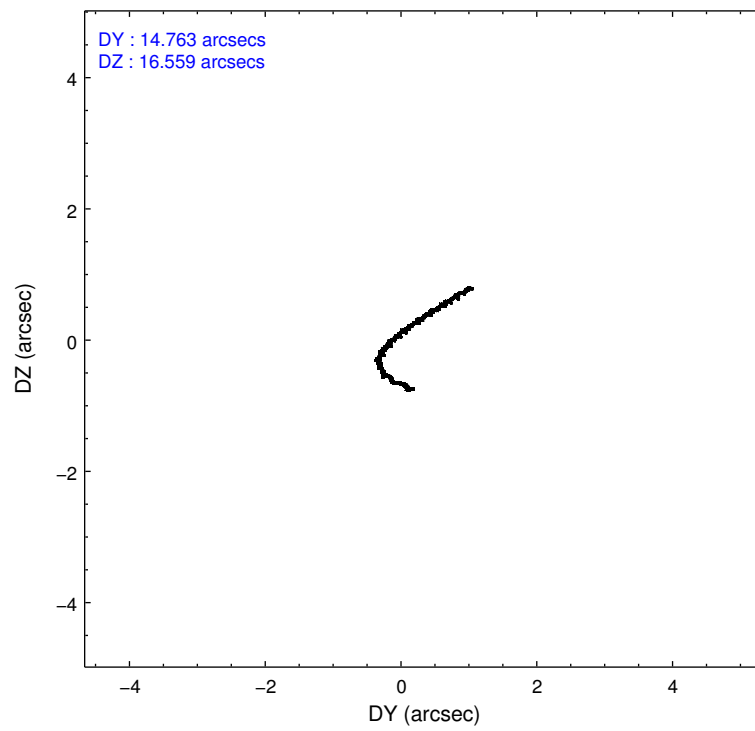
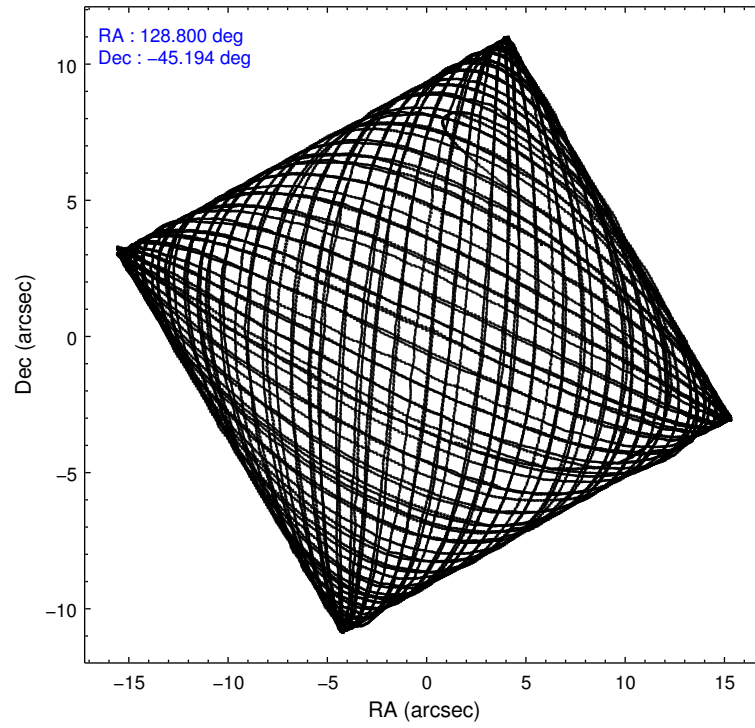
2.1.4 Events

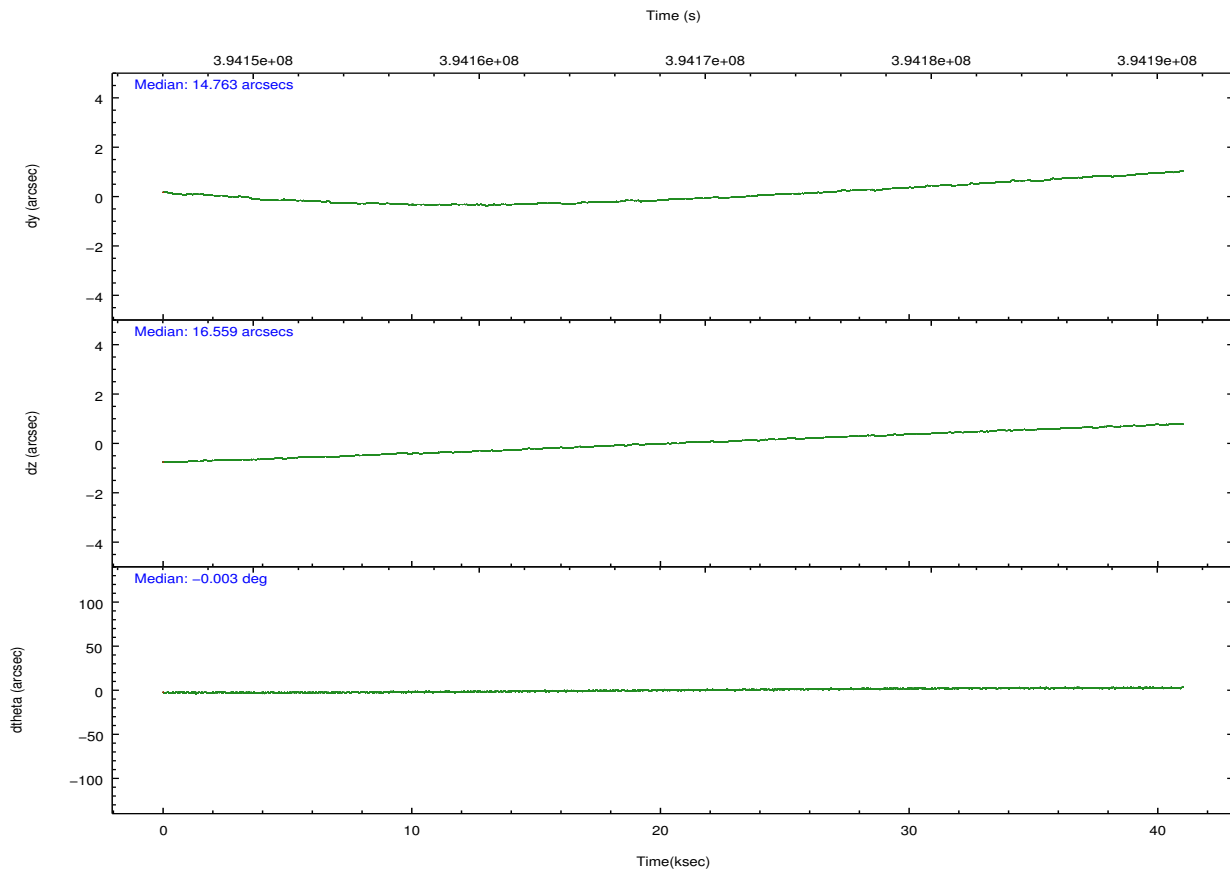
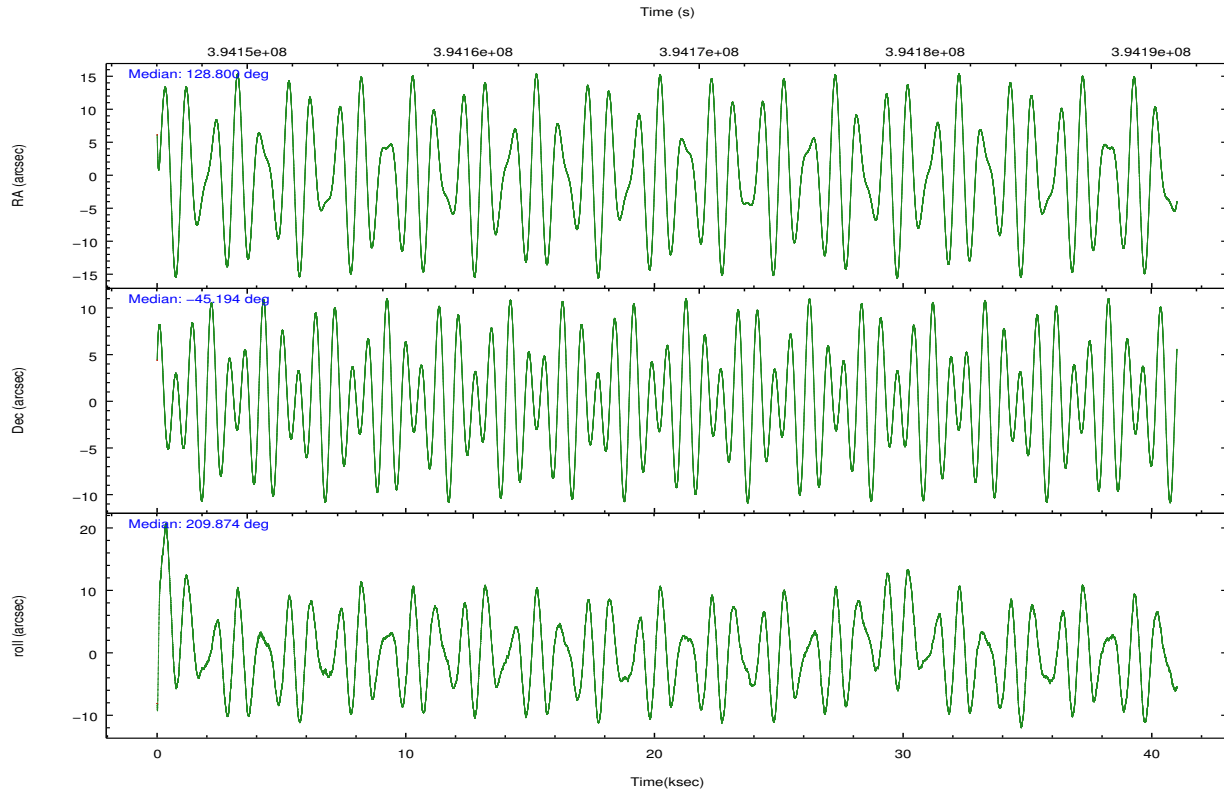
	ccd 2	ccd 3	ccd 5	ccd 6	ccd 7	ccd 8		ccd 2	ccd 3	ccd 5	ccd 6	ccd 7	ccd 8
level 1 events	305114	271022	359998	318505	737241	355070	grade 0 events	27956	24433	40509	54802	178238	47610
rejected events	258495	229183	137176	238427	122187	235810		9%	9%	11%	17%	24%	13%
rejected %	84%	84%	38%	74%	16%	66%	grade 1 events	277	232	803	340	1565	380
								0%	0%	0%	0%	0%	0%
							grade 2 events	7948	6730	68829	10891	155272	24615
								2%	2%	19%	3%	21%	6%
							grade 3 events	3106	3124	11719	4171	65878	10776
								1%	1%	3%	1%	8%	3%
							grade 4 events	3112	2932	11663	4008	65243	10034
								1%	1%	3%	1%	8%	2%
							grade 5 events	6557	7683	24700	7965	29026	12887
								2%	2%	6%	2%	3%	3%
							grade 6 events	4507	4627	90137	6218	150522	26235
								1%	1%	25%	1%	20%	7%
							grade 7 events	251651	221261	111638	230110	91497	222533
								82%	81%	31%	72%	12%	62%

2.2 Compared Parameters

Parameter	Planned	Actual	Parameter	Planned	Actual
Instrument	ACIS	ACIS	Obspar format version number	7	7
Detector	ACIS-235678	ACIS-235678	Obspar file type	PREDICTED	ACTUAL
Grating	NONE	NONE	Obspar update status	NONE	UPDATED
Data mode	FAINT	FAINT	CCD I0 on	N	N
Observation mode	POINTING	POINTING	CCD I1 on	N	N
[deg] Pointing RA	128.819118	128.8001223561206	CCD I2 on	O2	Y
[deg] Pointing Dec	-45.170232	-45.19407062258317	CCD I3 on	Y	Y
[deg] Pointing Roll	209.731583	209.874730399089	CCD S0 on	N	N
[mm] SIM focus pos	-0.684267	-0.6828225247311905	CCD S1 on	O1	Y
[mm] SIM defocus	0	0.001444936568705701	CCD S2 on	Y	Y
[mm] SIM translation stage pos	-190.132523	-190.1400660498719	CCD S3 on	Y	Y
[mm] SIM translation stage offset	0	0.00754346686406393	CCD S4 on	Y	Y
[s] Observation start time (MET)	394149074.184000	394147310.28428	CCD S5 on	N	N
Observation start date	2010-06-28T21:50:08	2010-06-28T21:21:50	Number of optional ACIS chips dropped	0	0
[s] Observation end time (MET)	394189074.184000	394189955.92396	On-chip summing requested	N	N
Observation end date	2010-06-29T08:56:48	2010-06-29T09:12:35	Subarray requested	NONE	NONE
Read mode	TIMED	TIMED	Alternating exposures requested	N	N
			[s] Primary exposure time	0.000000	3.2

2.3 Aspect





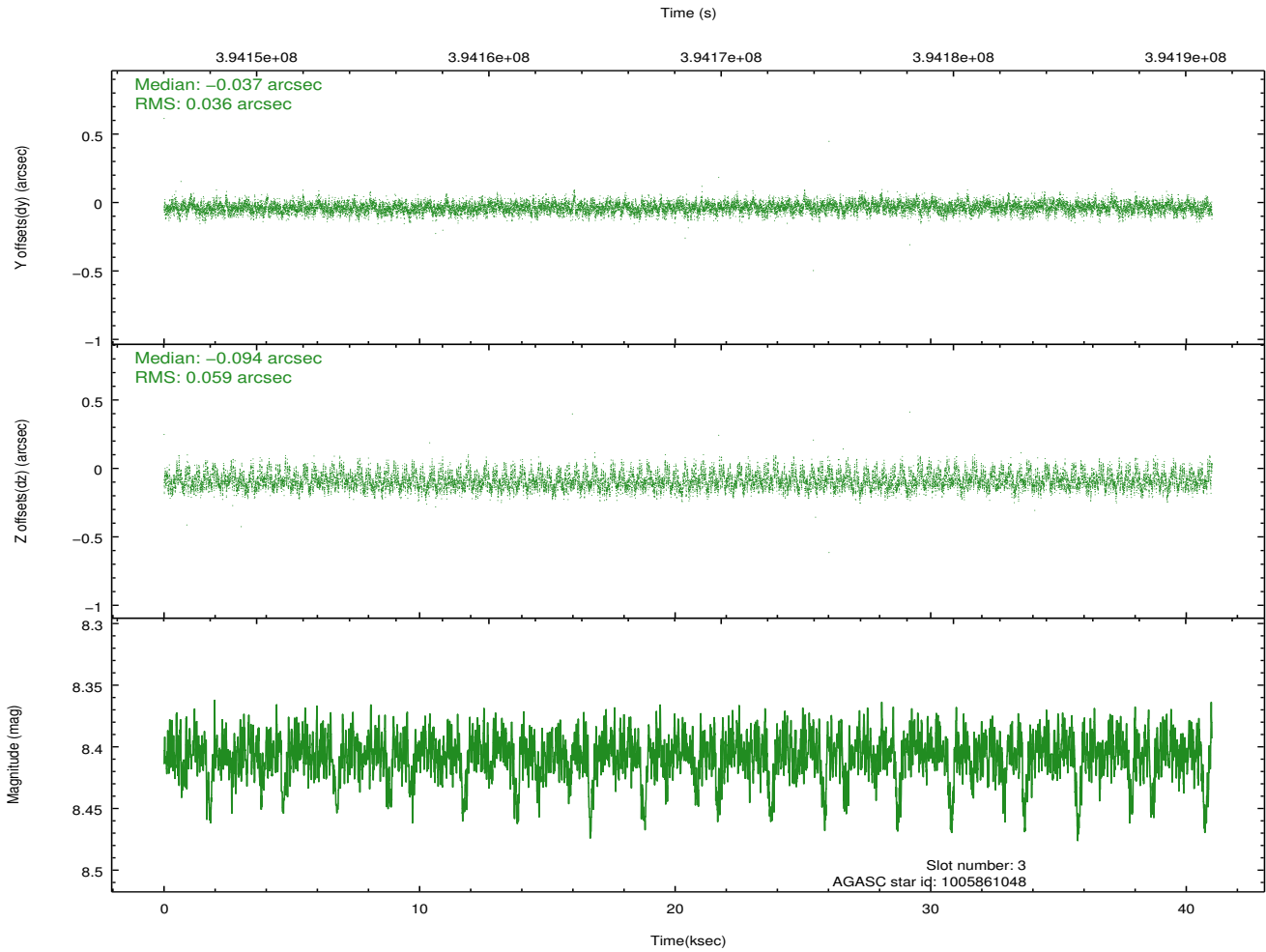
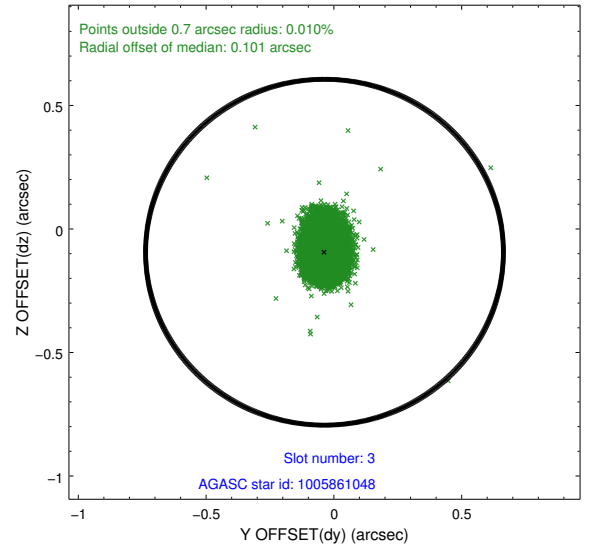
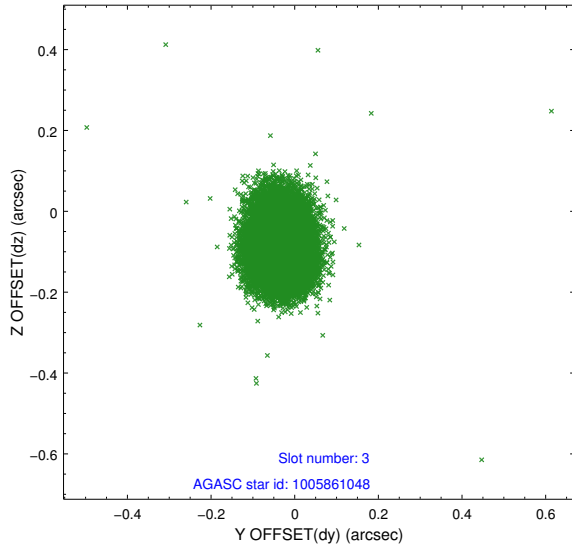
Slot Statistics

slot	status	id	mag	n_pts	med_dy	med_dz	dr1	dr2	ra	dec	mean_y	mean_z
0	FID	ACIS-S-2	6.89	10003	-0.074	-0.031	0.014	0.024	0.000000	0.000000	-767.94	-1738.00
1	FID	ACIS-S-4	6.98	10002	0.198	0.044	0.014	0.022	0.000000	0.000000	2145.63	170.51
2	FID	ACIS-S-5	7.00	10003	-0.152	-0.004	0.019	0.027	0.000000	0.000000	-1820.82	164.19
3	GUIDE	1005861048	8.41	19992	-0.037	-0.094	0.072	0.122	128.669106	-44.528323	-811.04	-2197.17
4	GUIDE	1005862984	8.79	19998	-0.121	0.132	0.081	0.134	128.482680	-44.577316	-308.10	-2279.62
5	GUIDE	1005871096	9.01	19991	0.043	0.066	0.096	0.153	128.774147	-44.764566	-623.97	-1324.63
6	GUIDE	1005871784	7.99	19997	0.033	-0.182	0.066	0.109	128.533947	-44.544833	-480.05	-2316.74
7	GUIDE	1068263200	9.13	19991	0.085	0.082	0.095	0.149	128.222628	-45.344390	1624.85	-199.07

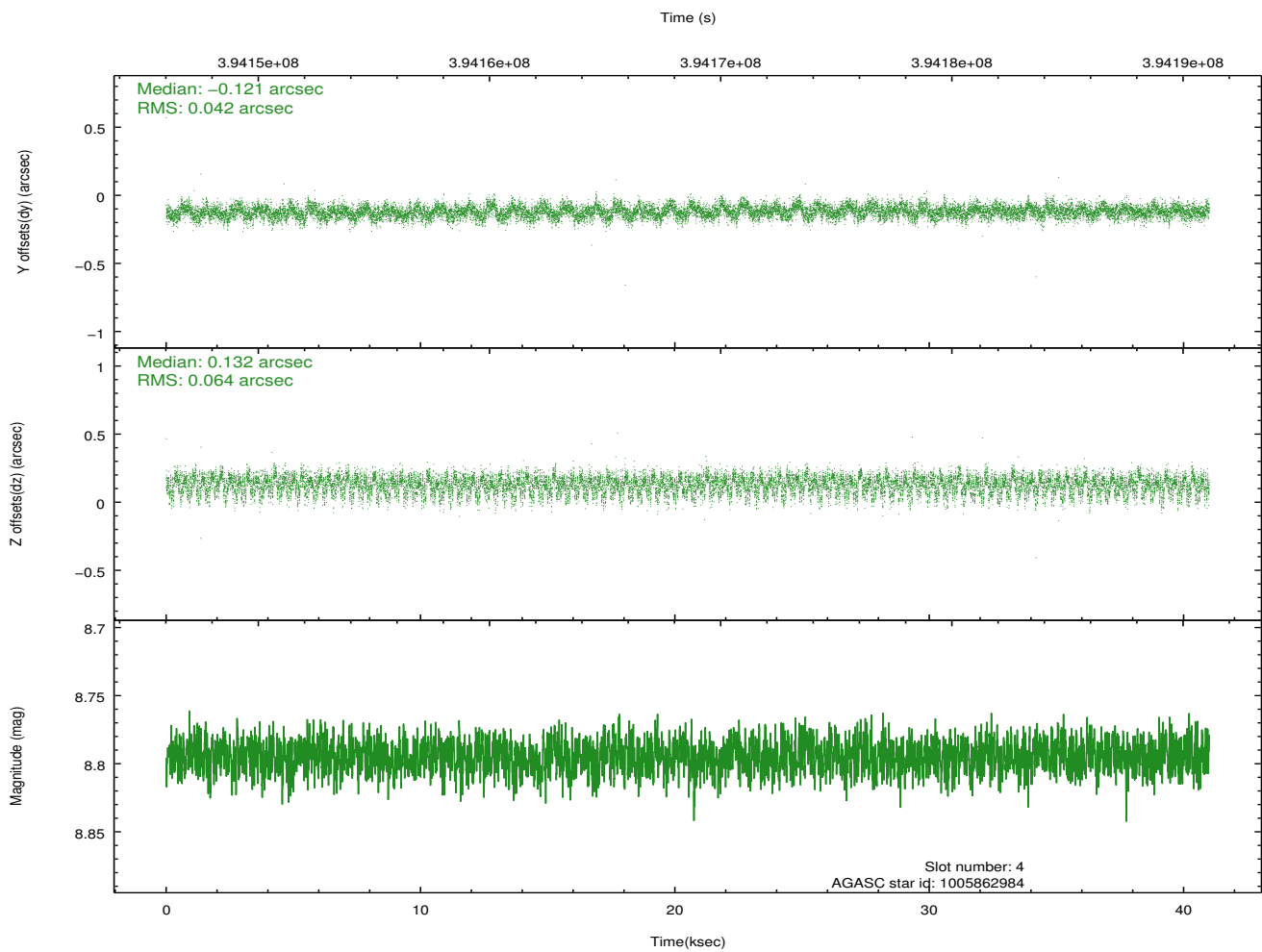
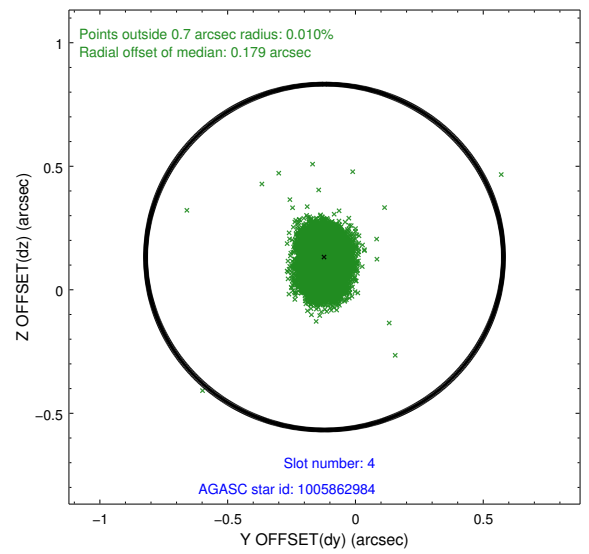
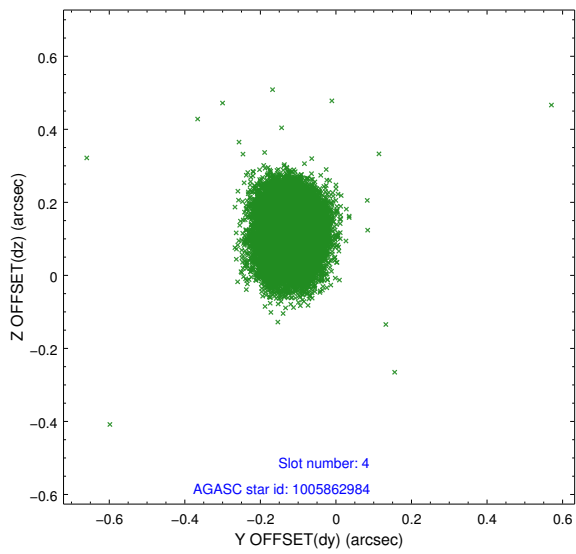
∞

2.4 Star Slots

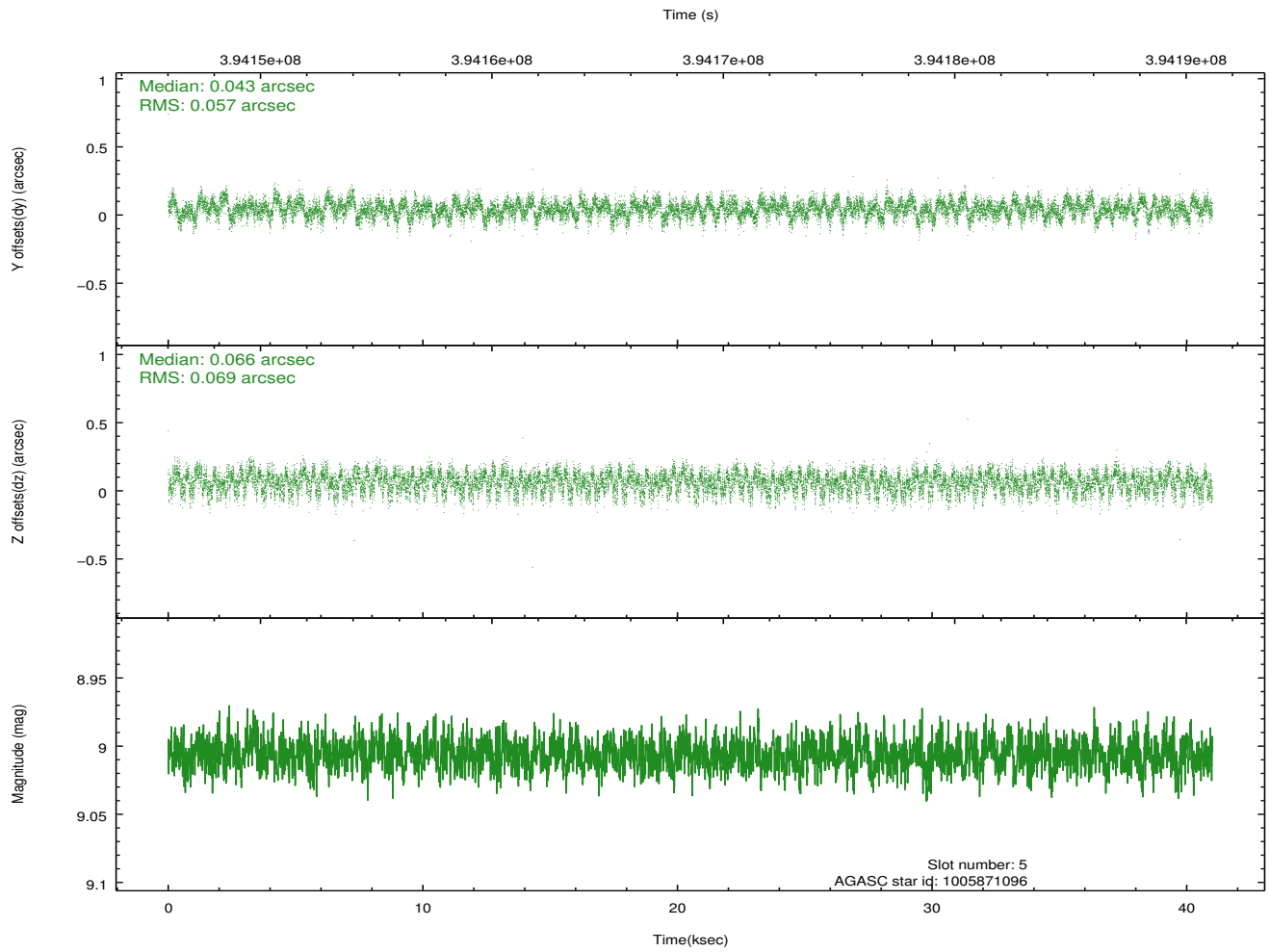
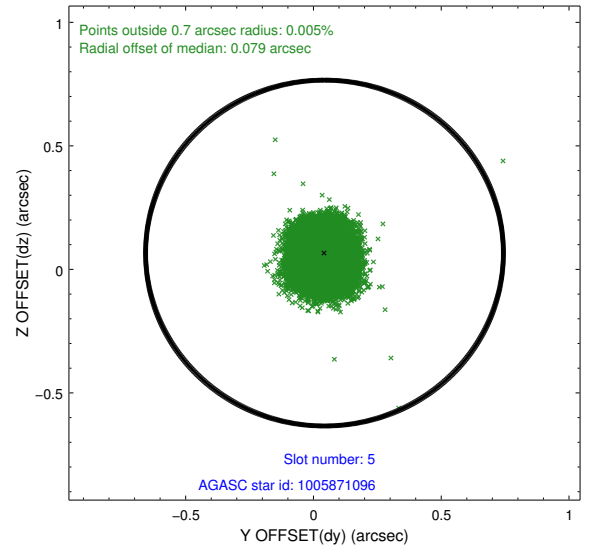
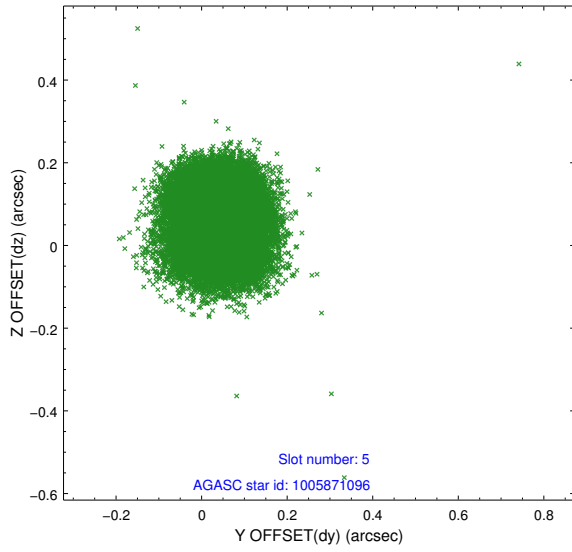
2.4.1 Slot 3



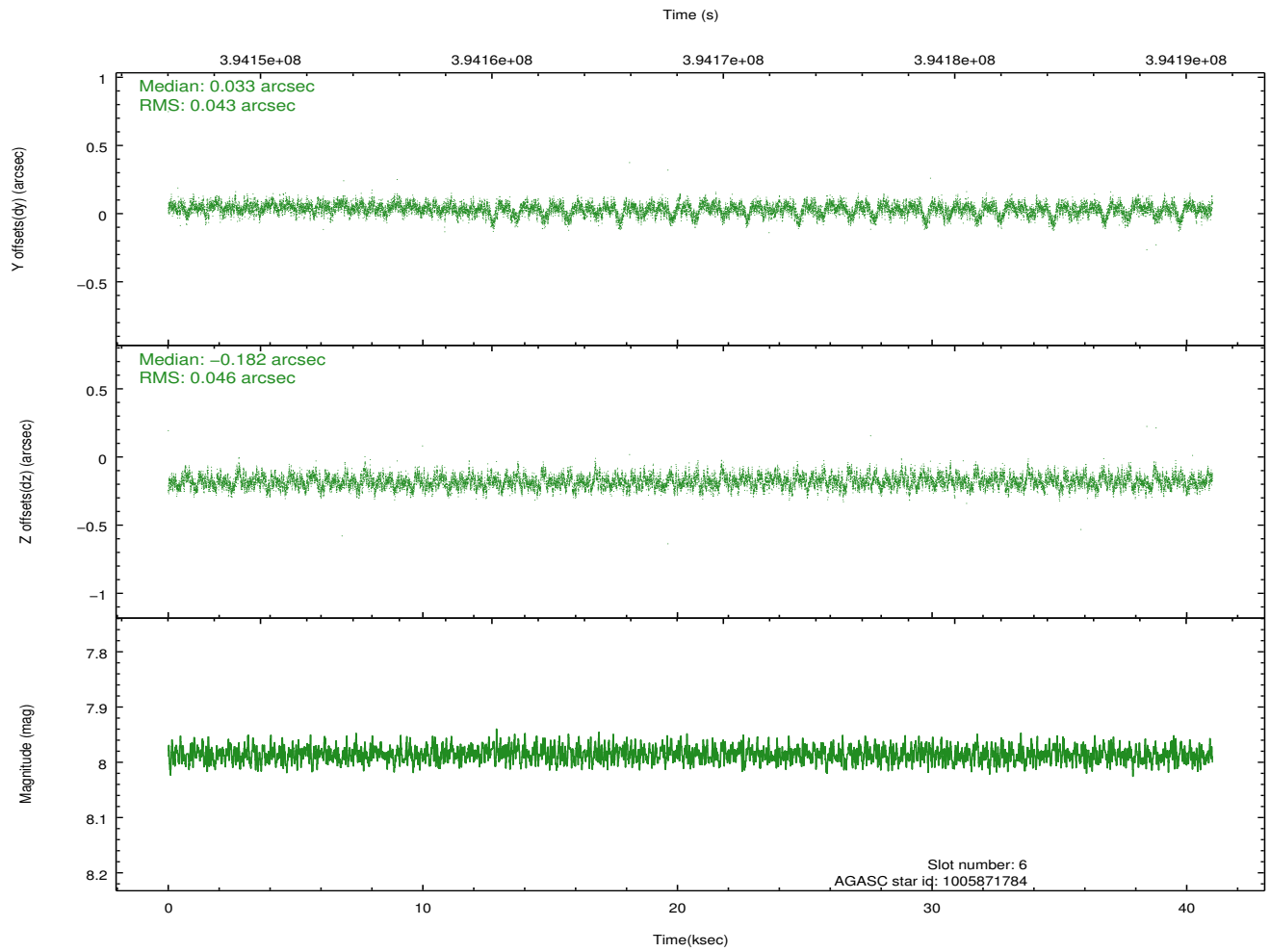
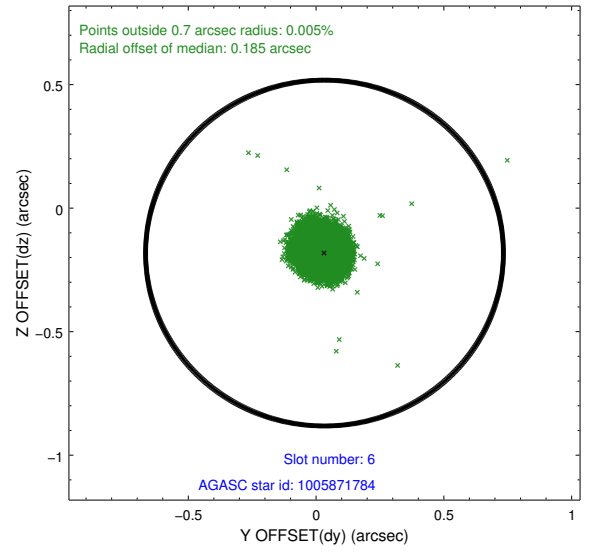
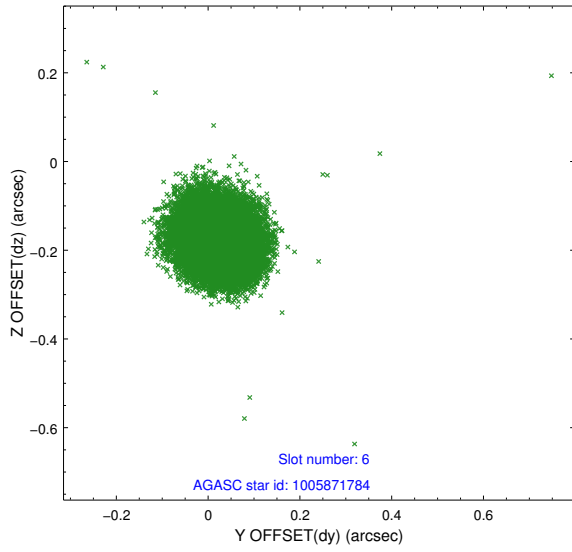
2.4.2 Slot 4



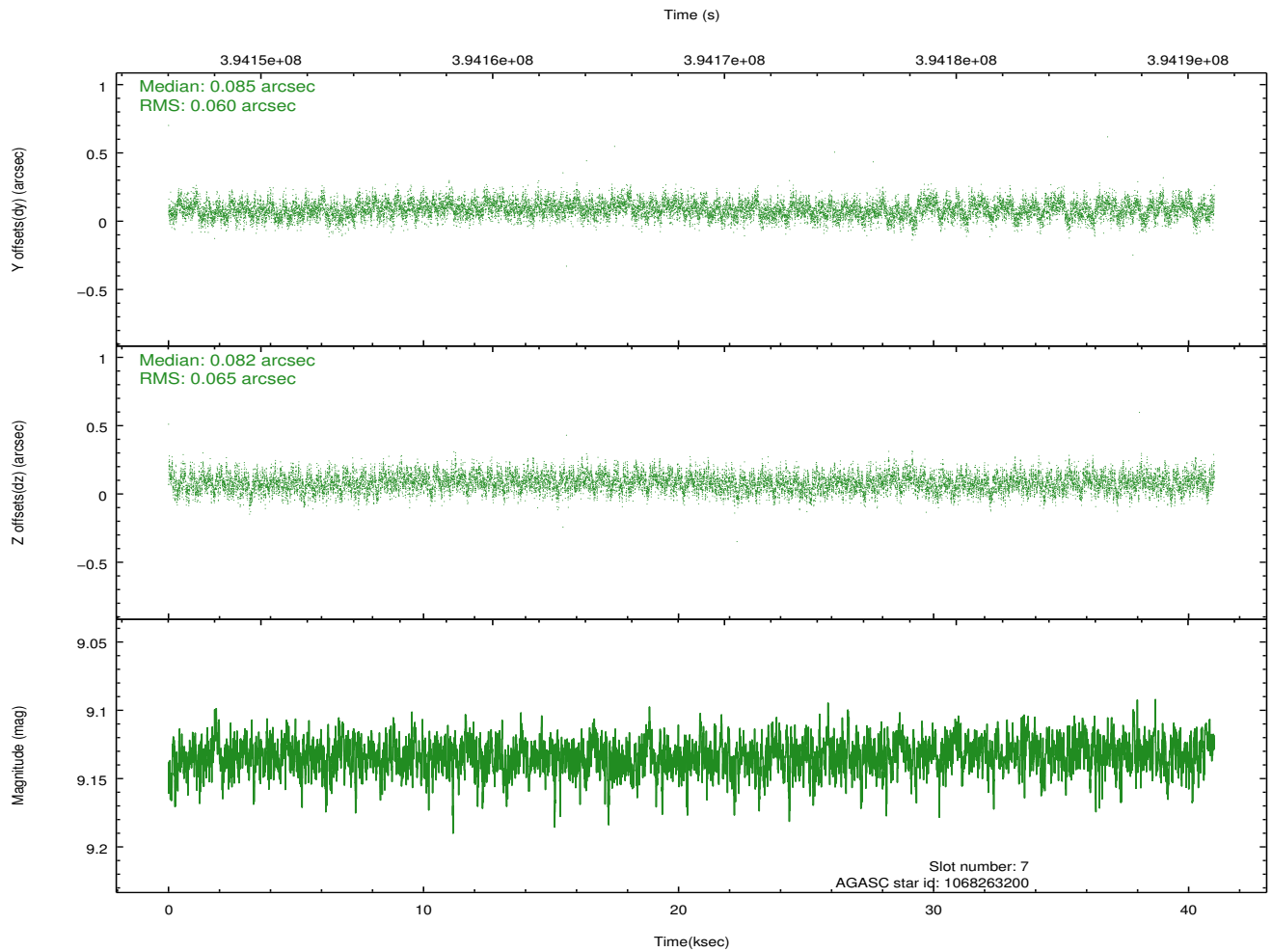
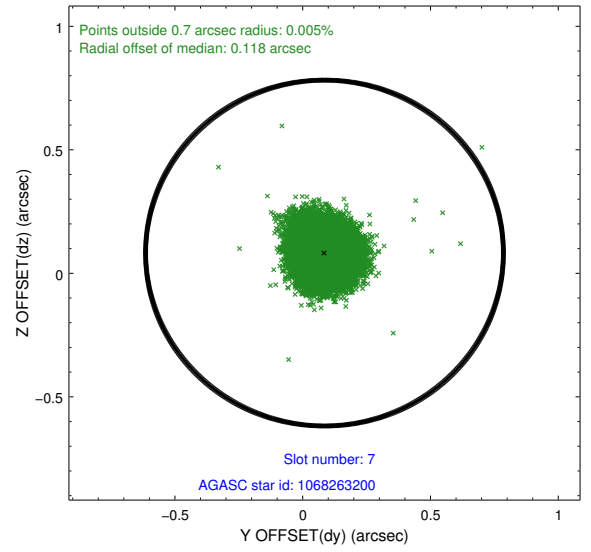
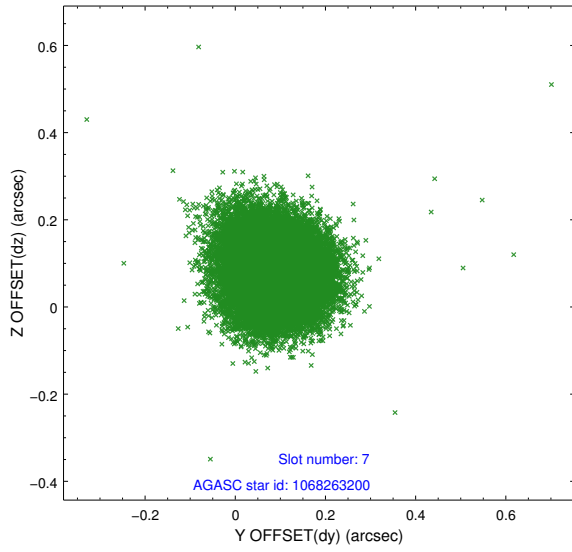
2.4.3 Slot 5



2.4.4 Slot 6

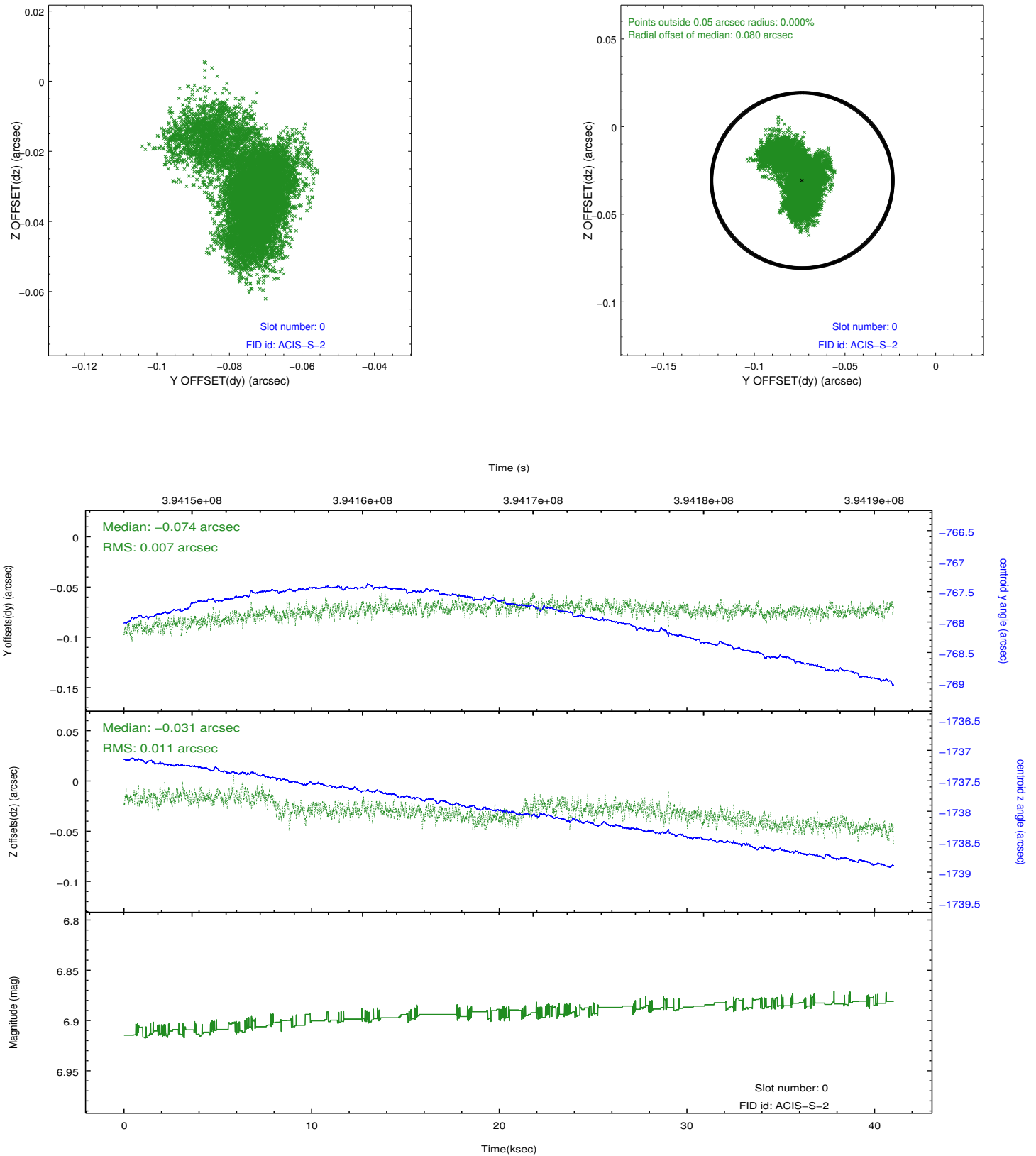


2.4.5 Slot 7

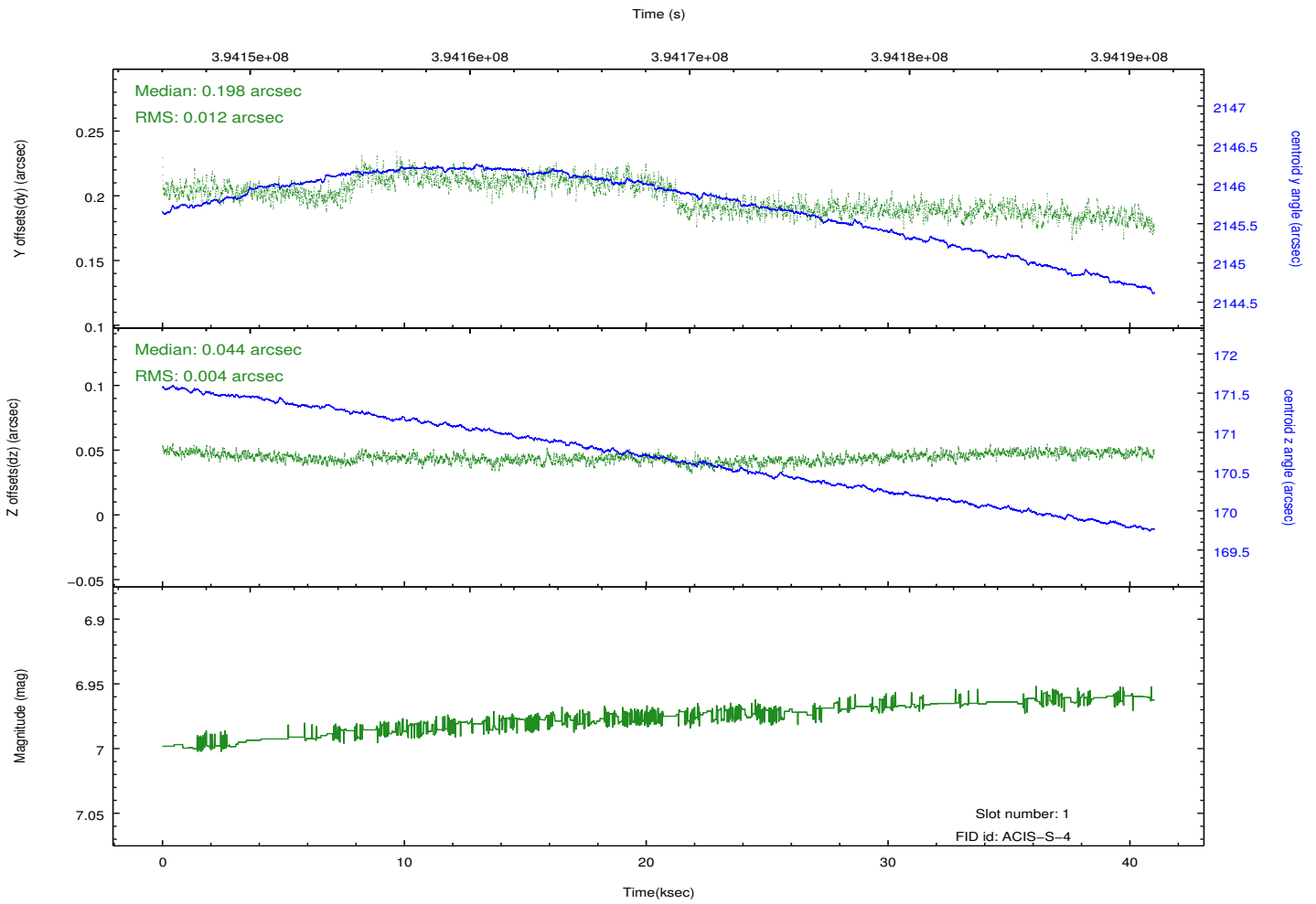
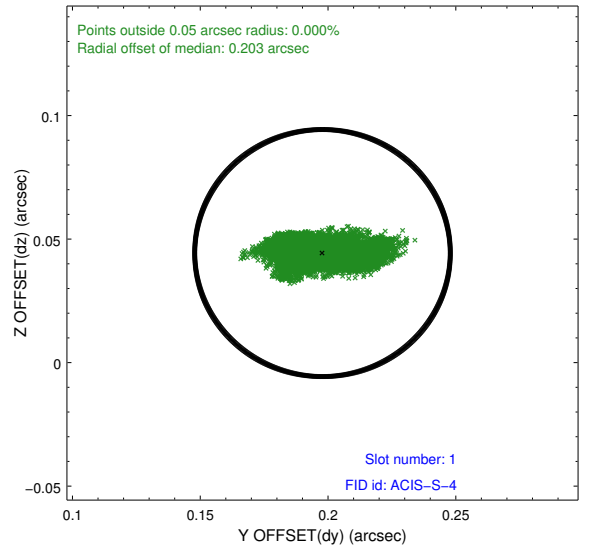
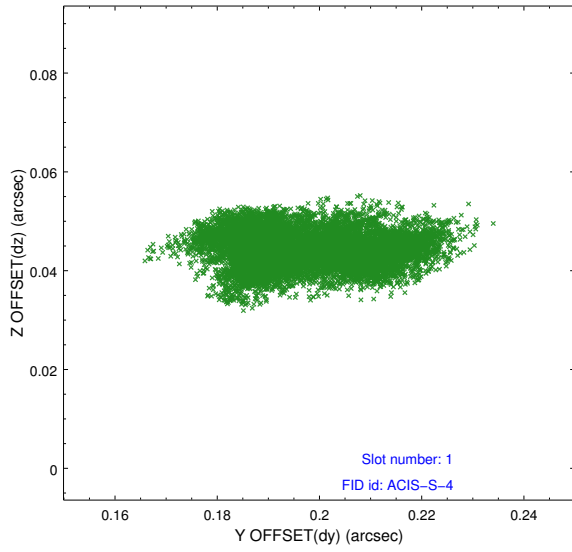


2.5 FID Slots

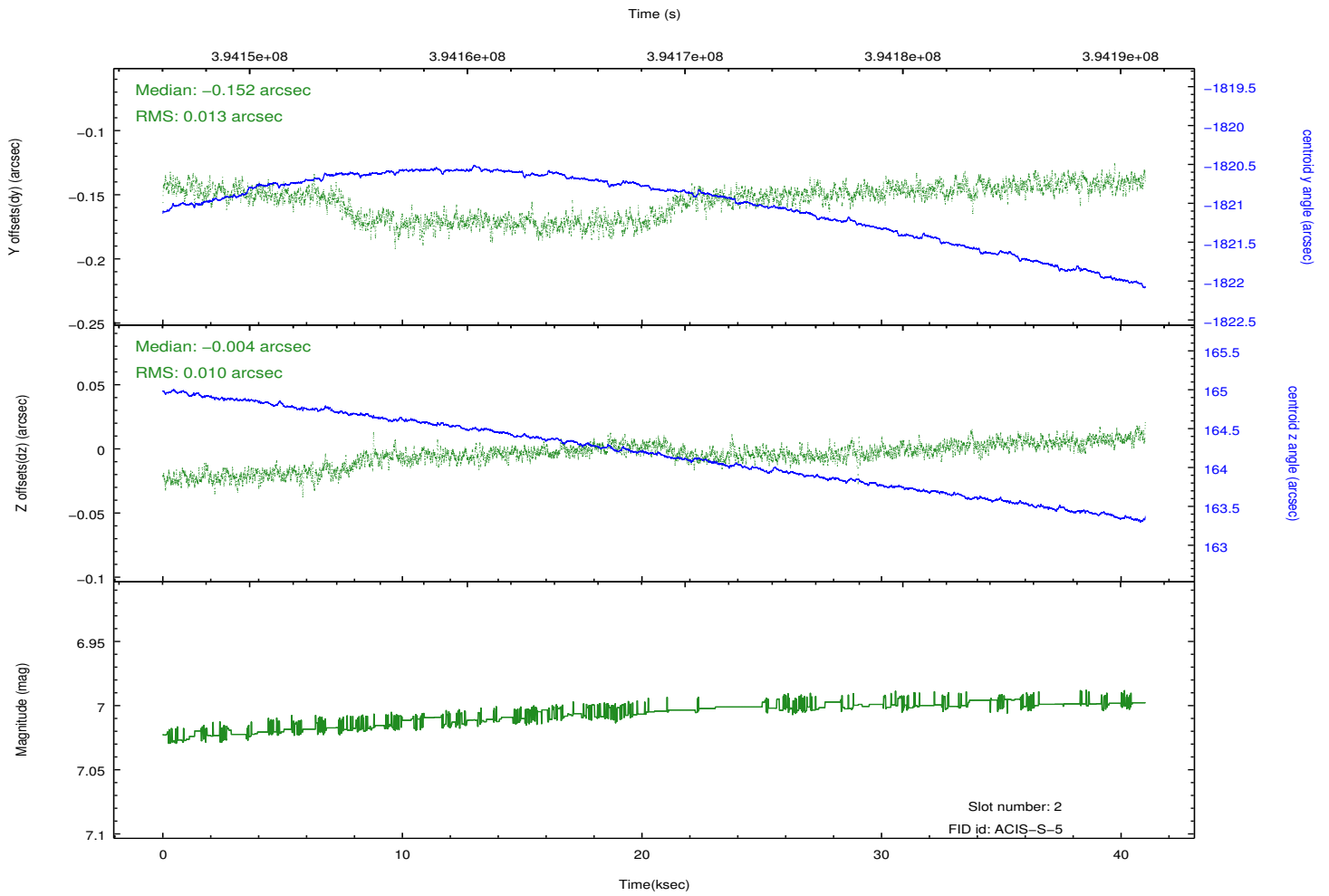
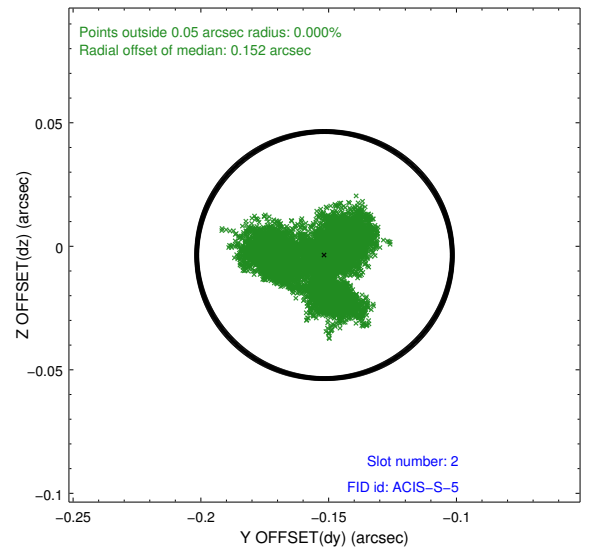
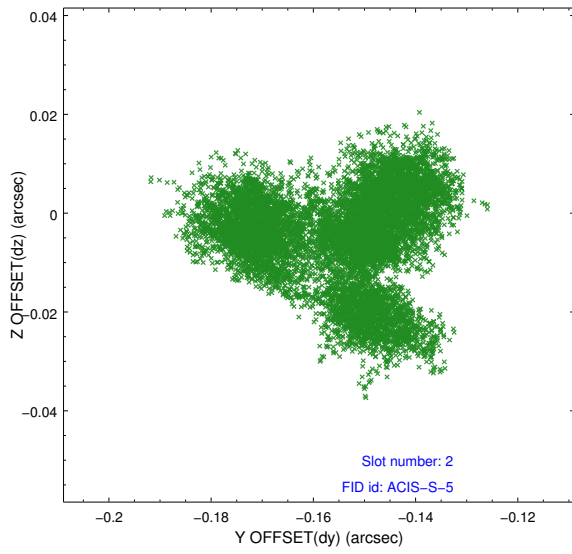
2.5.1 Slot 0



2.5.2 Slot 1



2.5.3 Slot 2



A Summary

A.1 Status

V&V Scientist	Jen Lauer
V&V Date (YYYY-MM-DD)	2012.07.06
V&V Edition	1
V&V Disposition and Status	OK
V&V Charge Time	40.044799850881

A.2 Comments