

V&V Reference Report

L2 ASCDS Version : 8.4.4

Observation 10235 - L2 Version 2
Chandra X-Ray Center

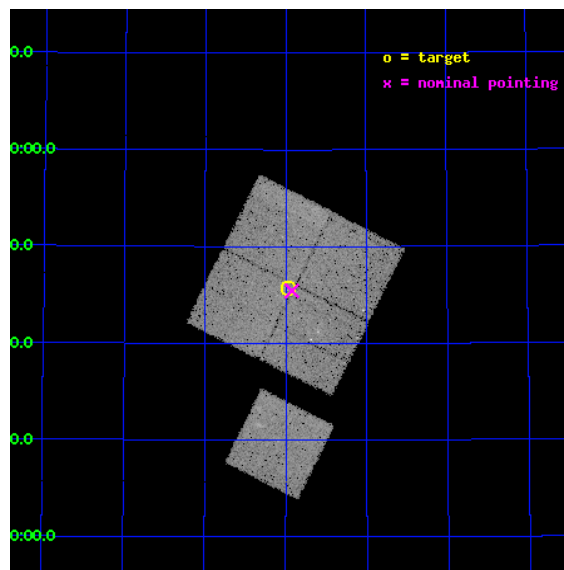
L2 Processing Date : Jun 1 2012

Contents

1	Front	2
2	OBI	3
2.1	OBI	3
2.1.1	Images	3
2.1.2	Bias	3
2.1.3	Parameters	4
2.1.4	Events	4
2.2	Compared Parameters	5
2.3	Aspect	6
2.4	Star Slots	9
2.4.1	Slot 3	9
2.4.2	Slot 4	10
2.4.3	Slot 5	11
2.4.4	Slot 6	12
2.4.5	Slot 7	13
2.5	FID Slots	14
2.5.1	Slot 0	14
2.5.2	Slot 1	15
2.5.3	Slot 2	16
A	Summary	17
A.1	Status	17
A.2	Comments	17

1 Front

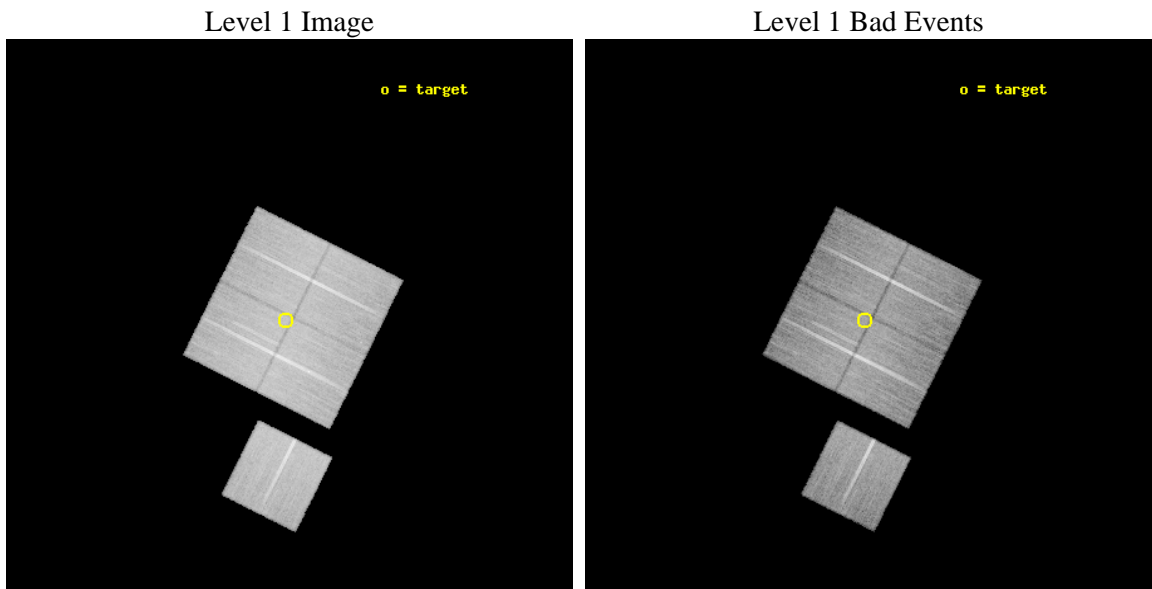
seq_num	701778	Sequence number
obs_id	10235	Observation id
title	The multi-faceted X-ray activity of low-redshift active galaxies	P
observer	Prof Mark Birkinshaw	Principal investigator
object	DA 240 W	Source name
dtcycle	0	
cycle	P	events from which exps? Prim/Second/Both
ra_targ	116.99125	Observer's specified target RA [deg]
dec_targ	55.762861	Observer's specified target Dec [deg]
ra_nom	116.98090561387	Nominal RA [deg]
dec_nom	55.757263802893	Nominal Dec [deg]
roll_nom	206.61041378335	Nominal Roll [deg]
revision	2	Processing version of data
ontime	25175.018183112	Sum of GTIs [s]
livetime	24846.088036971	Livetime [s]
ontime0	25181.300193667	Sum of GTIs [s]
ontime1	25175.018192947	Sum of GTIs [s]
ontime2	25175.018292546	Sum of GTIs [s]
ontime3	25175.018183112	Sum of GTIs [s]
ontime6	25175.018183112	Sum of GTIs [s]
l2events	91222	Number of level 2 events



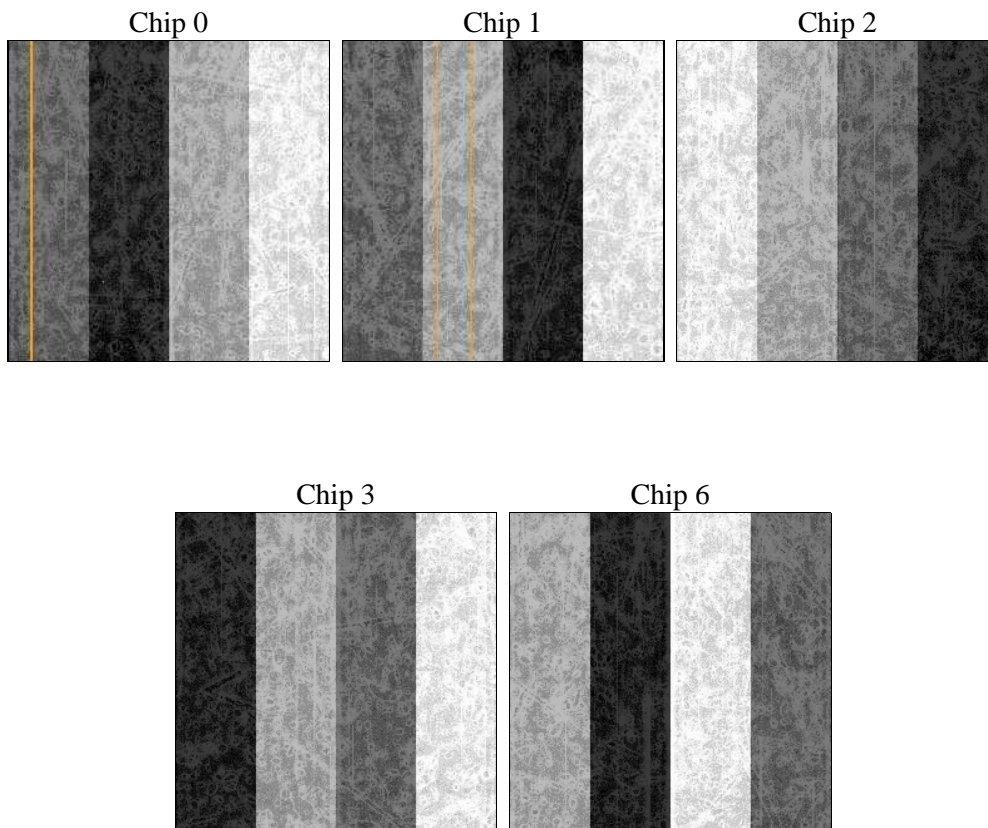
2 OBI

2.1 OBI

2.1.1 Images



2.1.2 Bias



2.1.3 Parameters

obi_num	0	Obi number	sched_exp_time	25000.000000	[s] Scheduled observation exposure time
ascdsver	8.4.4	Processing system revision	ontime	25175.018183112	Sum of GTIs [s]
caldsver	4.4.9	 	ontime0	25181.300193667	Sum of GTIs [s]
date	2012-06-01T06:28:34	Date and time of file creation	ontime1	25175.018192947	Sum of GTIs [s]
revision	2	Processing version of data	ontime2	25175.018292546	Sum of GTIs [s]
			ontime3	25175.018183112	Sum of GTIs [s]
			ontime6	25175.018183112	Sum of GTIs [s]
			l1events	1058041	Number of level 1 events

2.1.4 Events

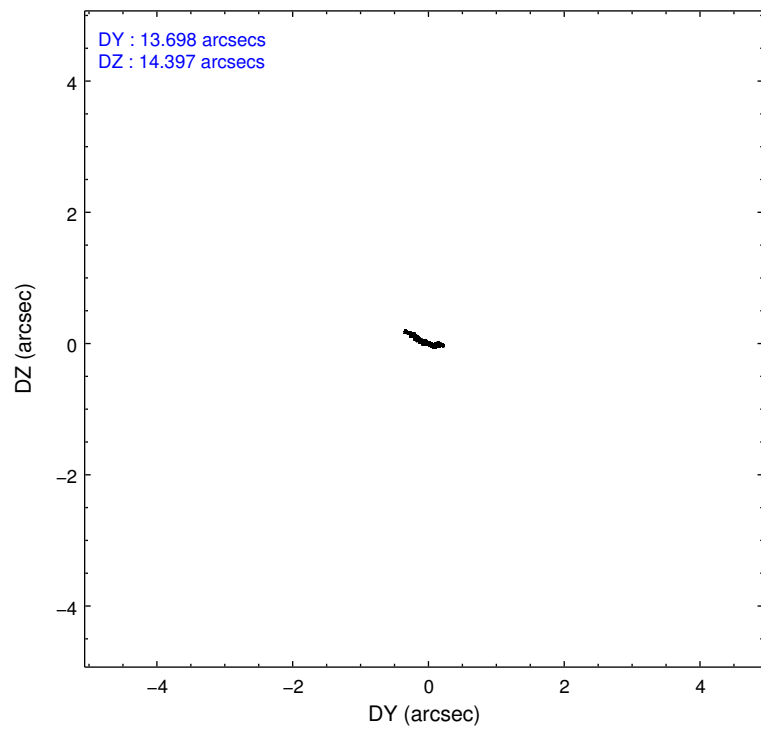
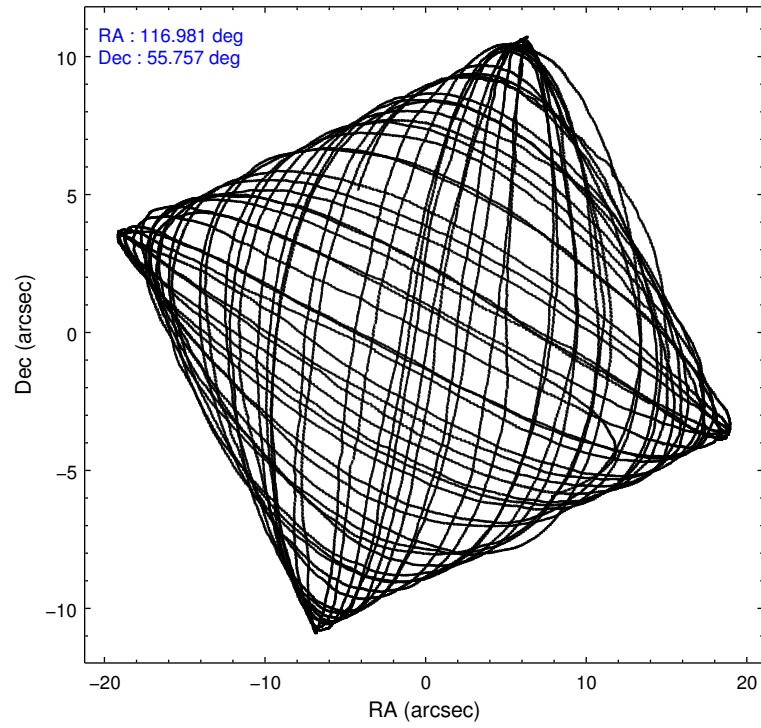
	ccd 0	ccd 1	ccd 2	ccd 3	ccd 6
level 1 events	197827	204499	223863	215009	216843
rejected events	176277	180381	201971	194731	194906
rejected %	89%	88%	90%	90%	89%

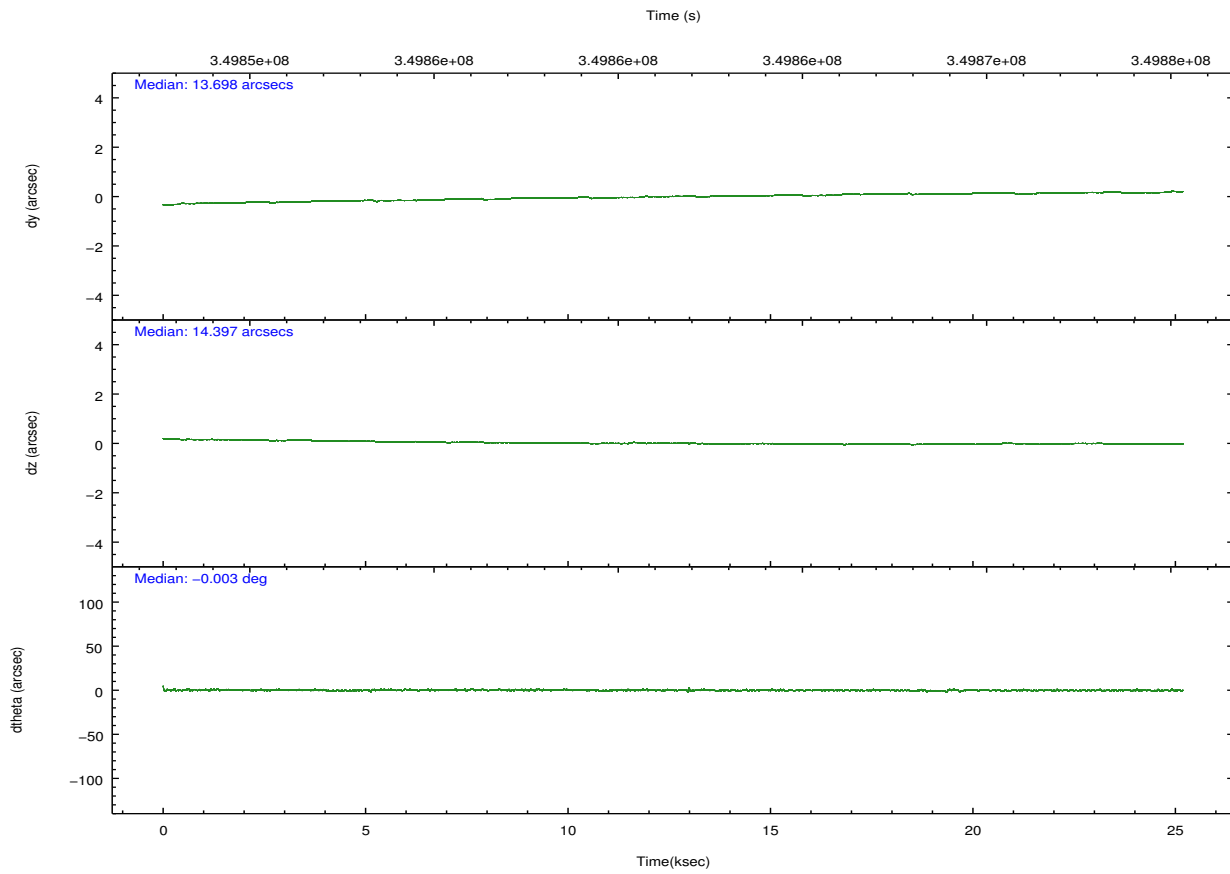
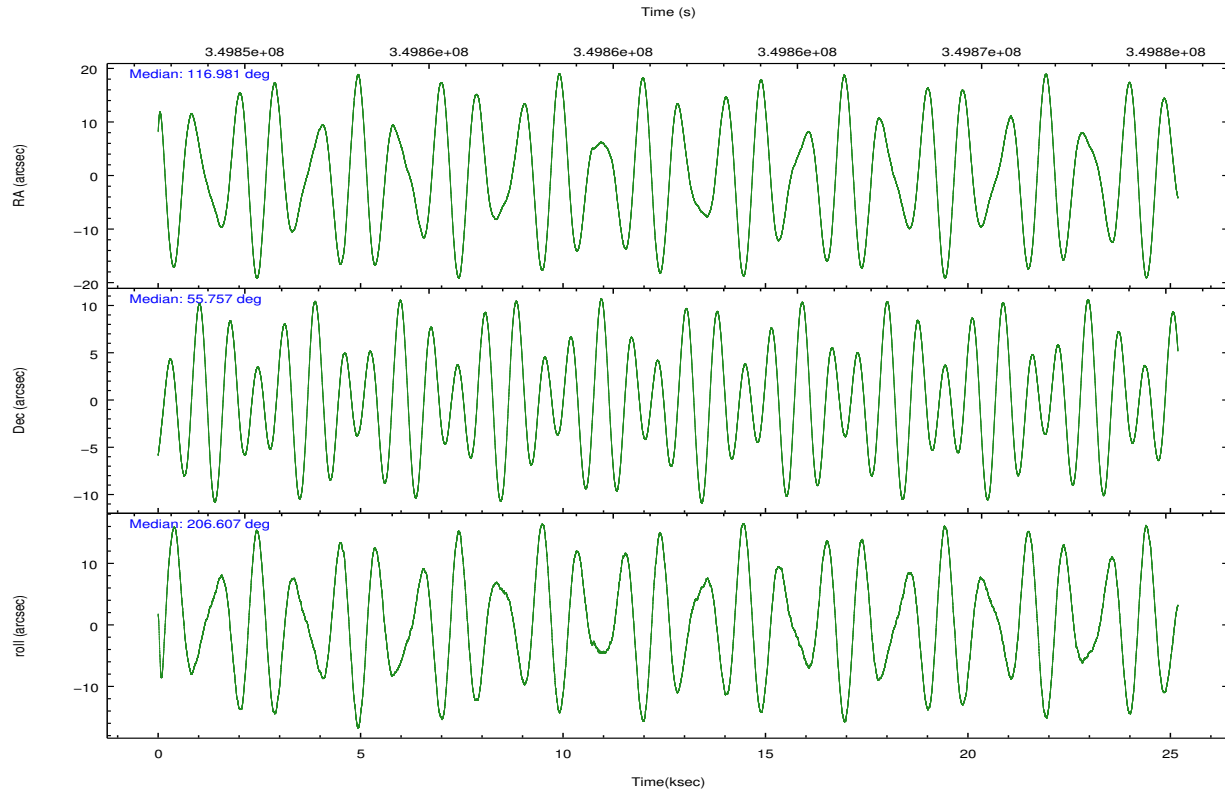
	ccd 0	ccd 1	ccd 2	ccd 3	ccd 6
grade 0 events	7724	8831	8445	7392	7974
	3%	4%	3%	3%	3%
grade 1 events	138	117	111	146	97
	0%	0%	0%	0%	0%
grade 2 events	5293	5682	5173	4710	4942
	2%	2%	2%	2%	2%
grade 3 events	2463	2624	2261	2206	2423
	1%	1%	1%	1%	1%
grade 4 events	2302	2563	2375	2292	2400
	1%	1%	1%	1%	1%
grade 5 events	7961	8787	7428	9151	8984
	4%	4%	3%	4%	4%
grade 6 events	4295	4980	4125	4202	4796
	2%	2%	1%	1%	2%
grade 7 events	167651	170915	193945	184910	185227
	84%	83%	86%	86%	85%

2.2 Compared Parameters

Parameter	Planned	Actual	Parameter	Planned	Actual
Instrument	ACIS	ACIS	Obspar format version number	7	7
Detector	ACIS-01236	ACIS-01236	Obspar file type	PREDICTED	ACTUAL
Grating	NONE	NONE	Obspar update status	NONE	UPDATED
Data mode	VFAINT	VFAINT	CCD I0 on	Y	Y
Observation mode	POINTING	POINTING	CCD I1 on	Y	Y
[deg] Pointing RA	117.007651	116.9809056138721	CCD I2 on	Y	Y
[deg] Pointing Dec	55.780272	55.75726380289257	CCD I3 on	Y	Y
[deg] Pointing Roll	206.379605	206.6104137833475	CCD S0 on	N	N
[mm] SIM focus pos	-0.782348	-0.7809083437167272	CCD S1 on	N	N
[mm] SIM defocus	0	0.001439871863259334	CCD S2 on	O1	Y
[mm] SIM translation stage pos	-233.592463	-233.5874344608287	CCD S3 on	N	N
[mm] SIM translation stage offset	0	-0.005018542100998502	CCD S4 on	N	N
[s] Observation start time (MET)	349849082.184000	349847775.65593	CCD S5 on	N	N
Observation start date	2009-02-01T04:16:56	2009-02-01T03:56:15	Number of optional ACIS chips dropped	0	0
[s] Observation end time (MET)	349874082.184000	349875167.24479	On-chip summing requested	N	N
Observation end date	2009-02-01T11:13:36	2009-02-01T11:32:47	Subarray requested	NONE	NONE
Read mode	TIMED	TIMED	Alternating exposures requested	N	N
			[s] Primary exposure time	0.000000	3.1

2.3 Aspect



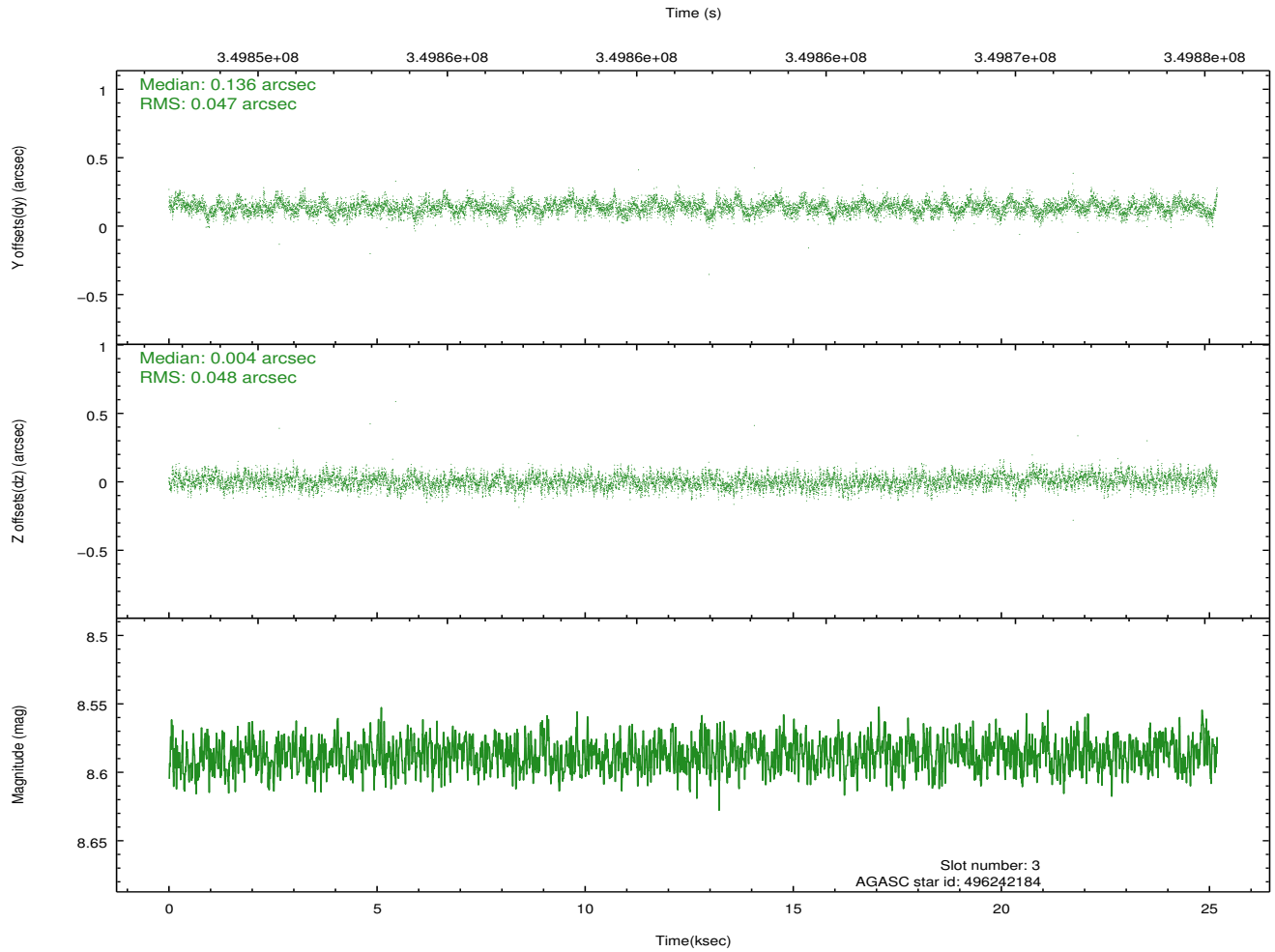
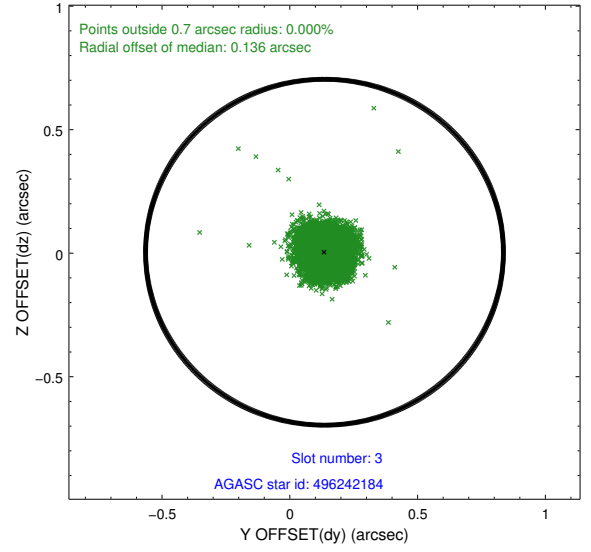
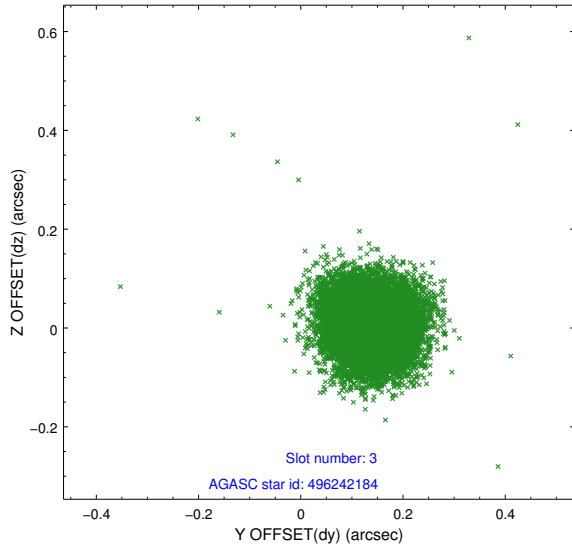


Slot Statistics

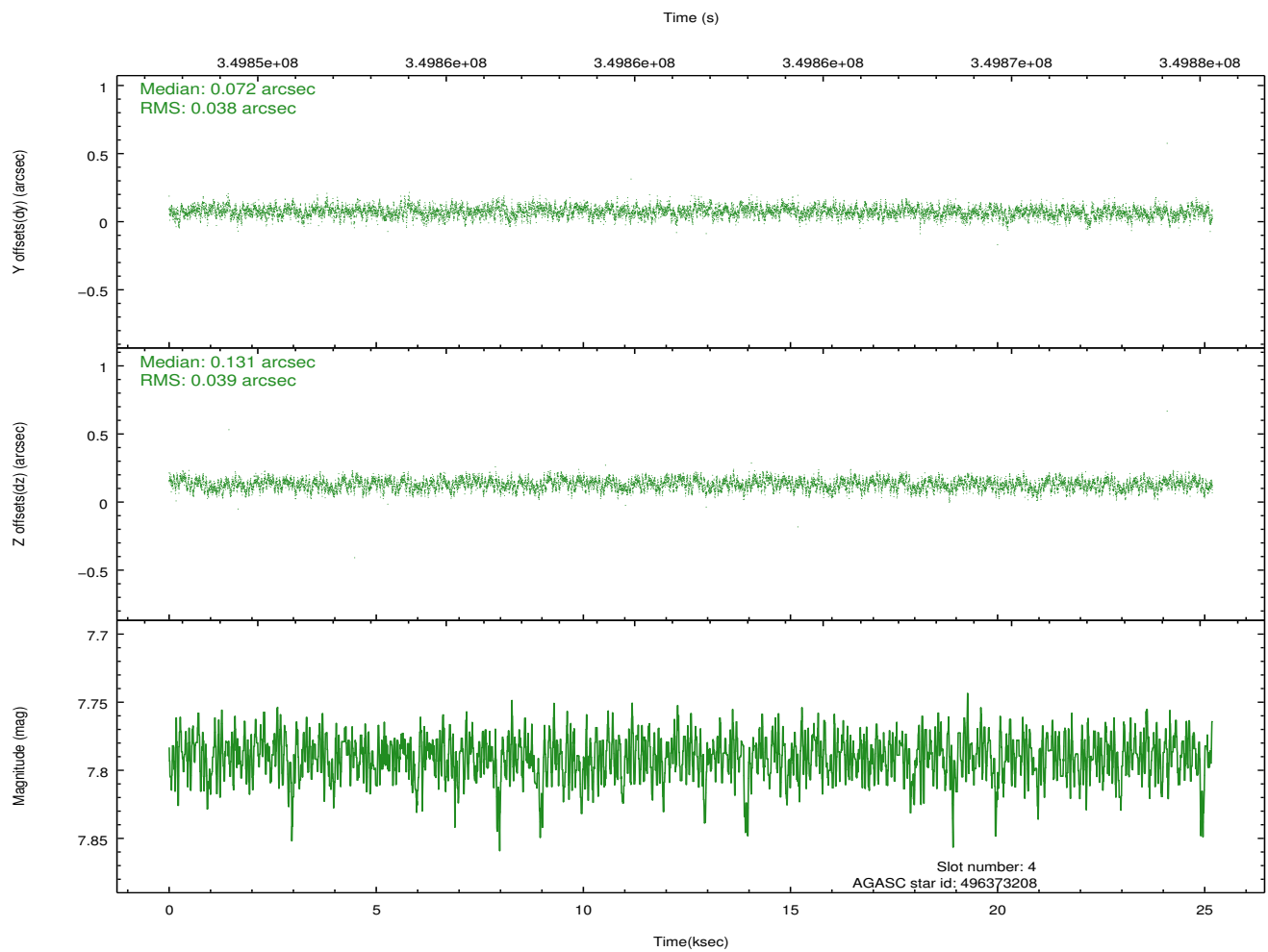
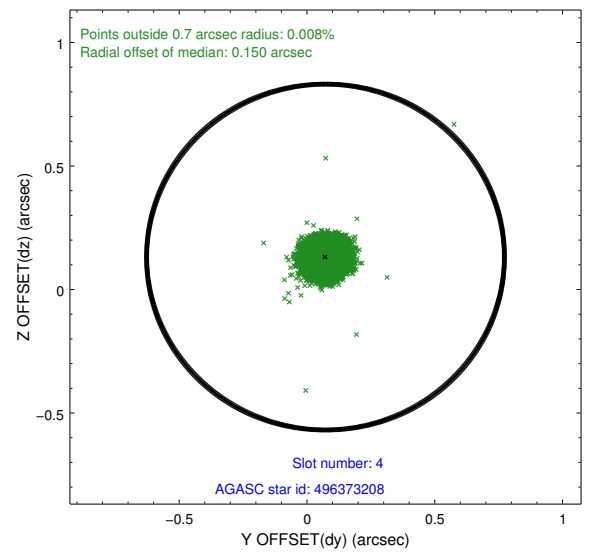
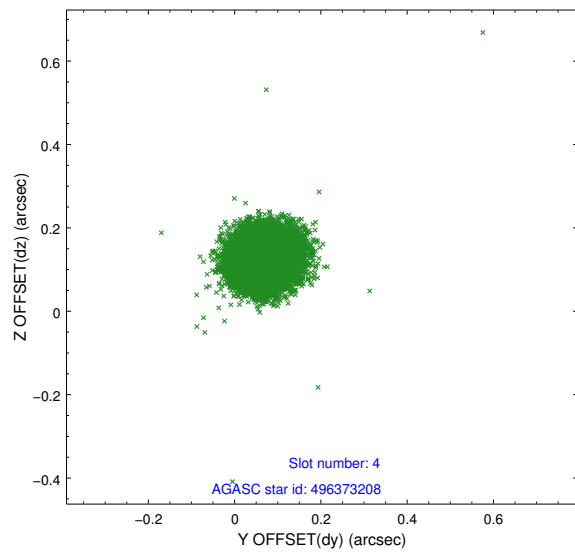
slot	status	id	mag	n_pts	med_dy	med_dz	dr1	dr2	ra	dec	mean_y	mean_z
0	FID	ACIS-I-1	7.05	6143	-0.014	0.028	0.011	0.021	0.000000	0.000000	925.82	-837.97
1	FID	ACIS-I-4	6.96	6142	0.170	0.010	0.013	0.026	0.000000	0.000000	2146.09	1061.77
2	FID	ACIS-I-5	7.03	6143	-0.256	0.032	0.012	0.028	0.000000	0.000000	-1822.29	1059.74
3	GUIDE	496242184	8.59	12280	0.136	0.004	0.071	0.115	116.337982	56.137867	629.59	-1755.59
4	GUIDE	496373208	7.79	12284	0.072	0.131	0.058	0.091	116.744717	55.493518	938.86	685.97
5	GUIDE	496377992	6.87	12285	-0.021	-0.165	0.052	0.084	116.751676	55.541366	849.00	538.19
6	GUIDE	496379664	7.80	12282	-0.096	-0.087	0.080	0.122	117.304171	55.136938	481.53	2345.11
7	GUIDE	496909824	7.70	12283	-0.090	0.114	0.055	0.089	117.782362	56.375378	-2339.14	-1240.49

2.4 Star Slots

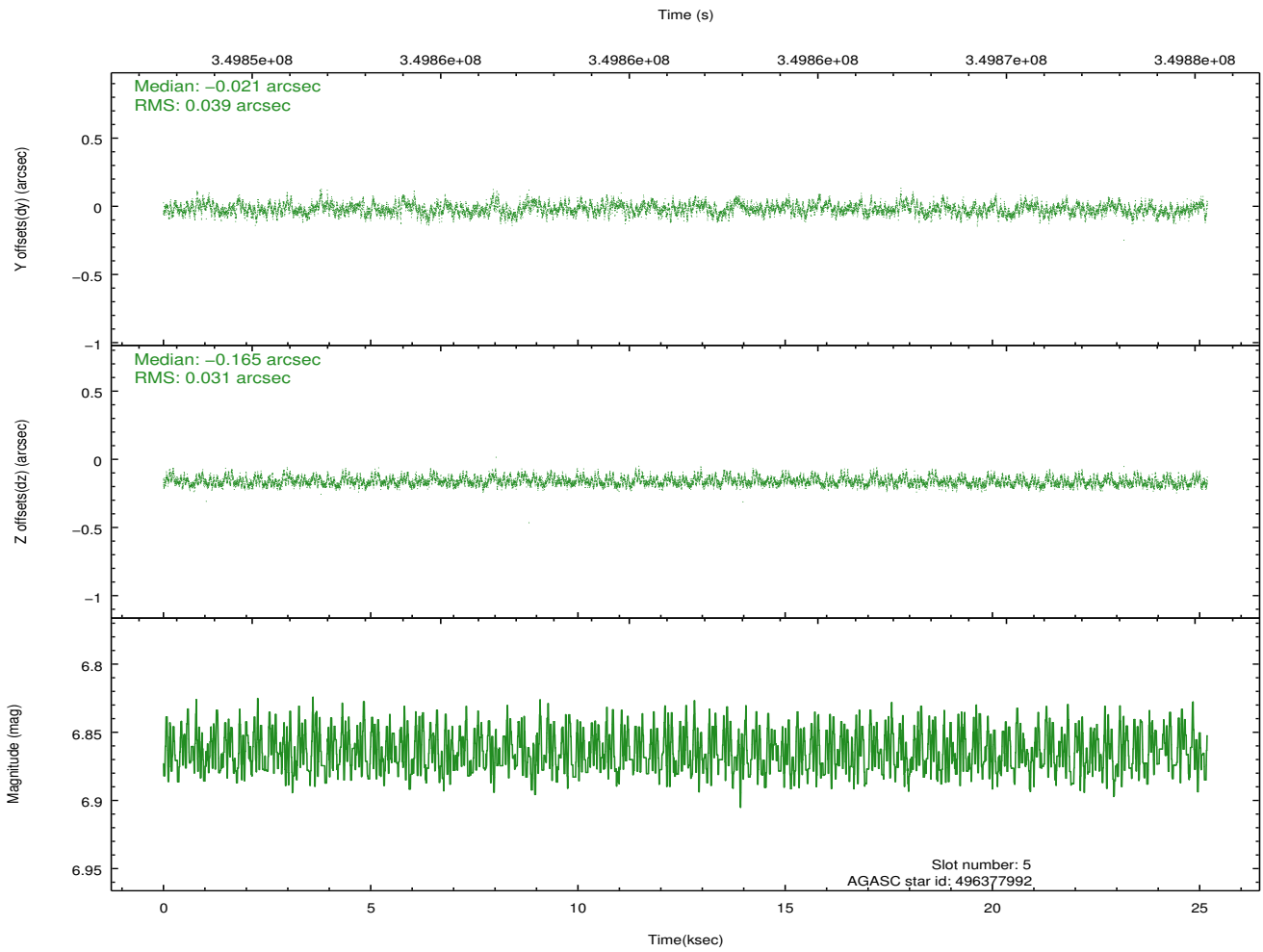
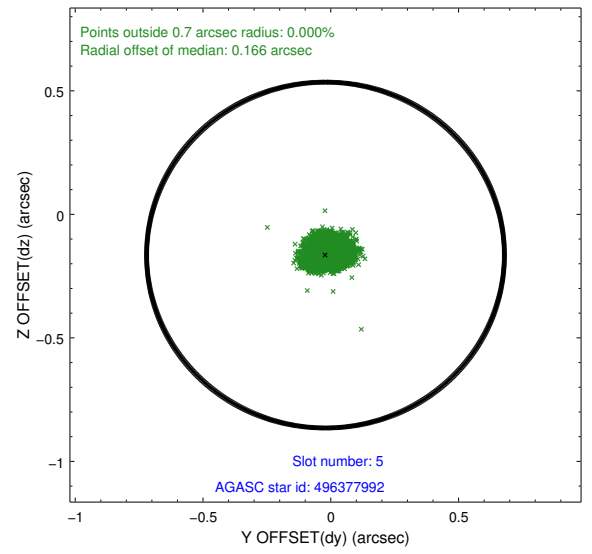
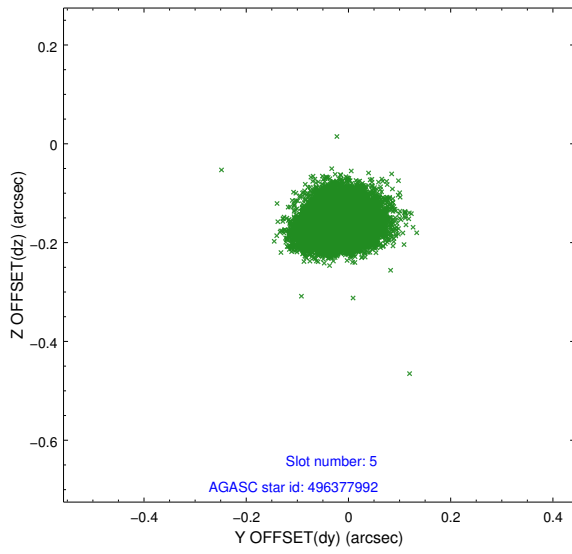
2.4.1 Slot 3



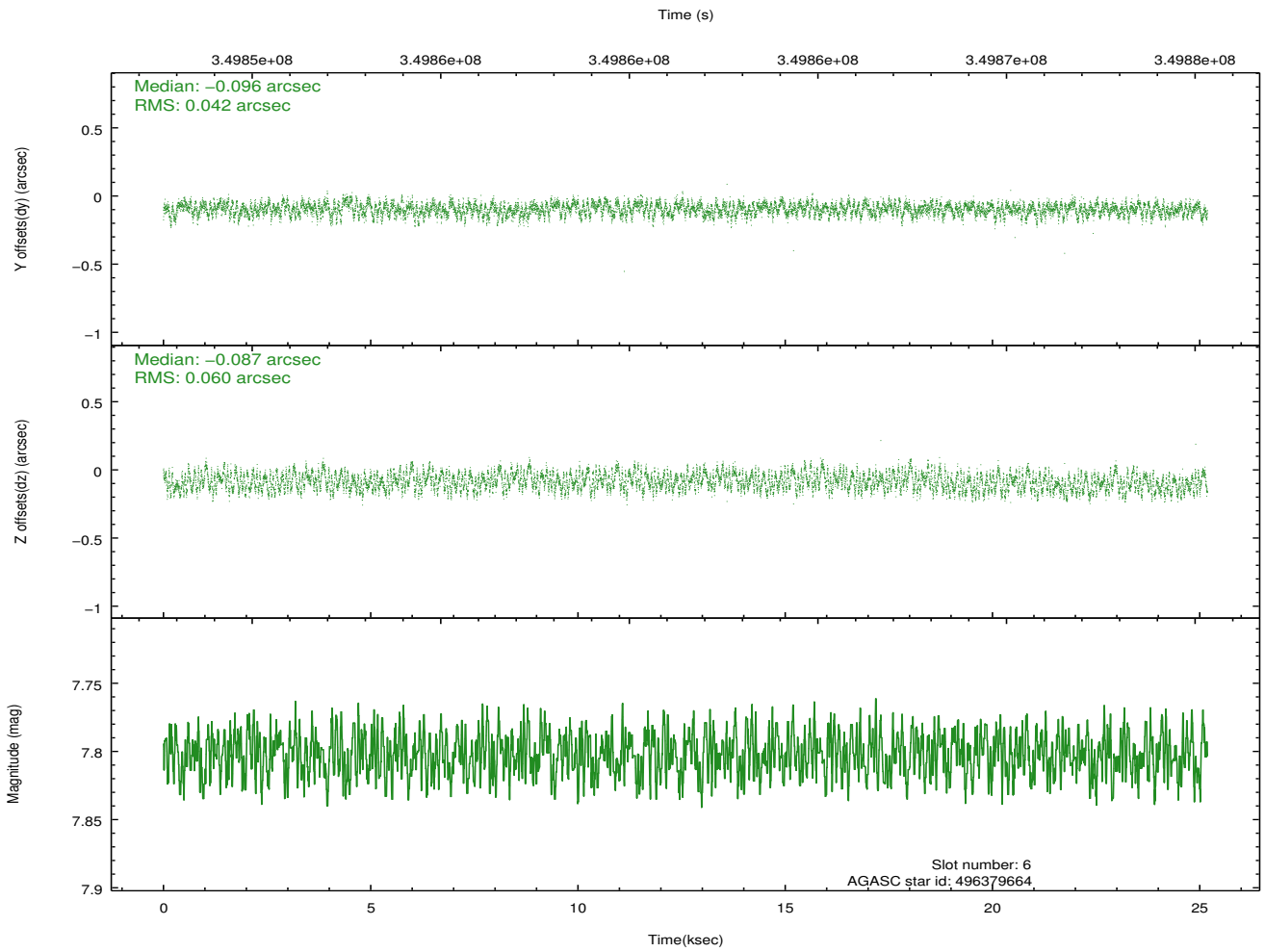
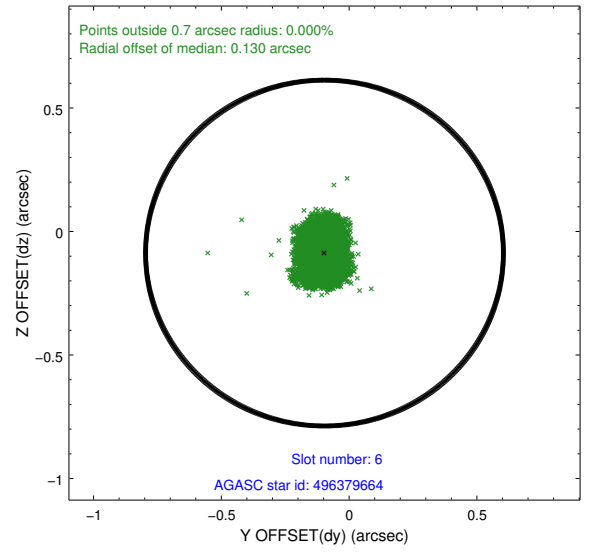
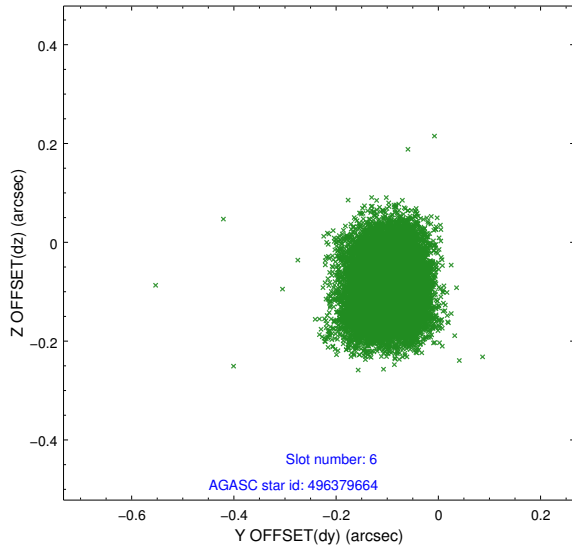
2.4.2 Slot 4



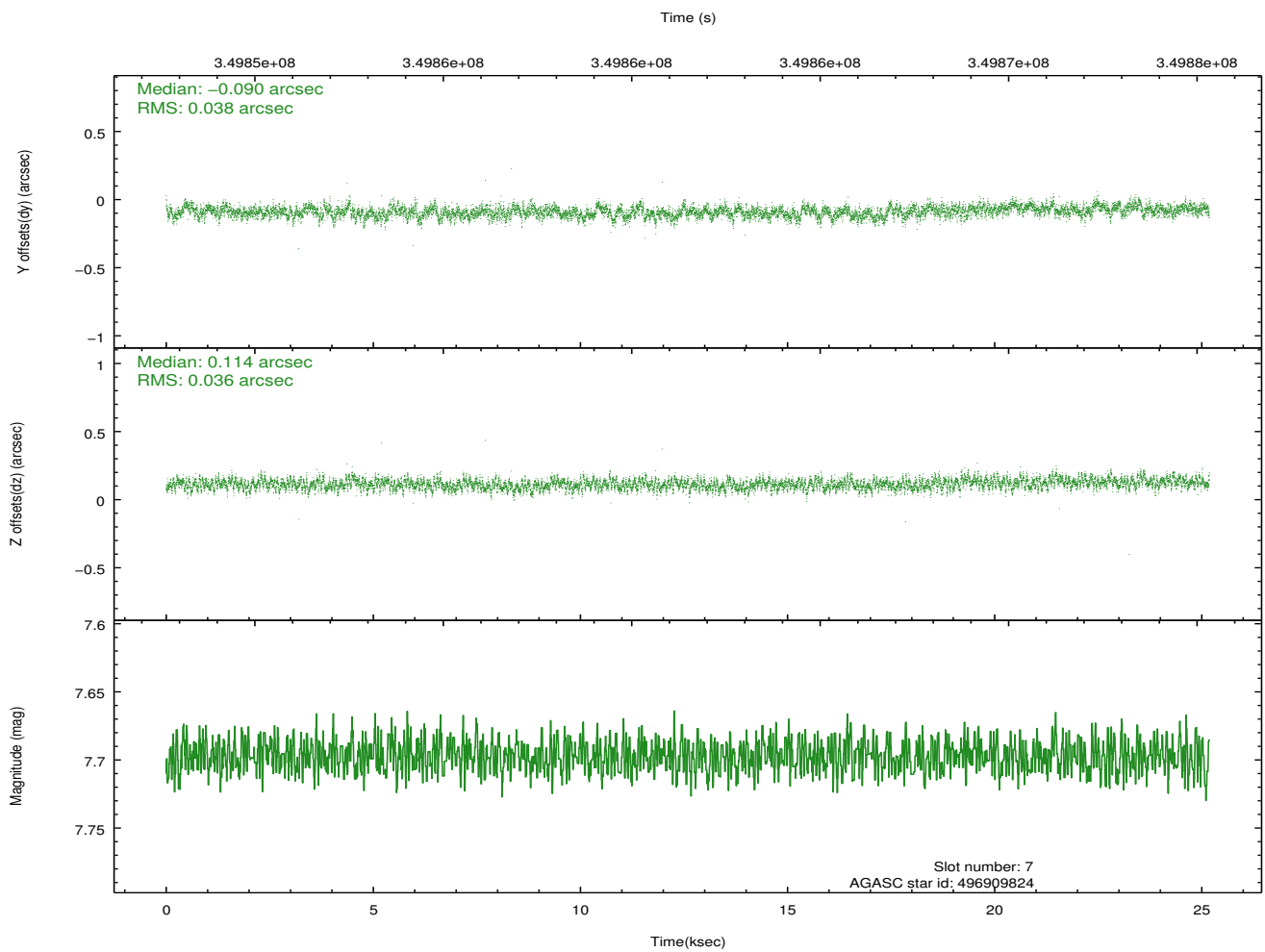
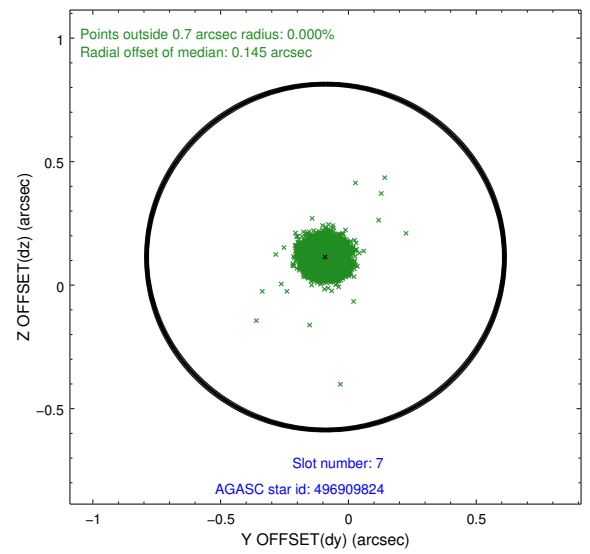
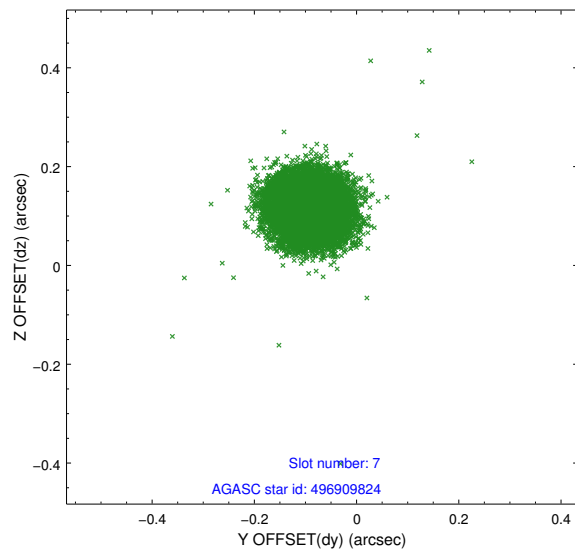
2.4.3 Slot 5



2.4.4 Slot 6

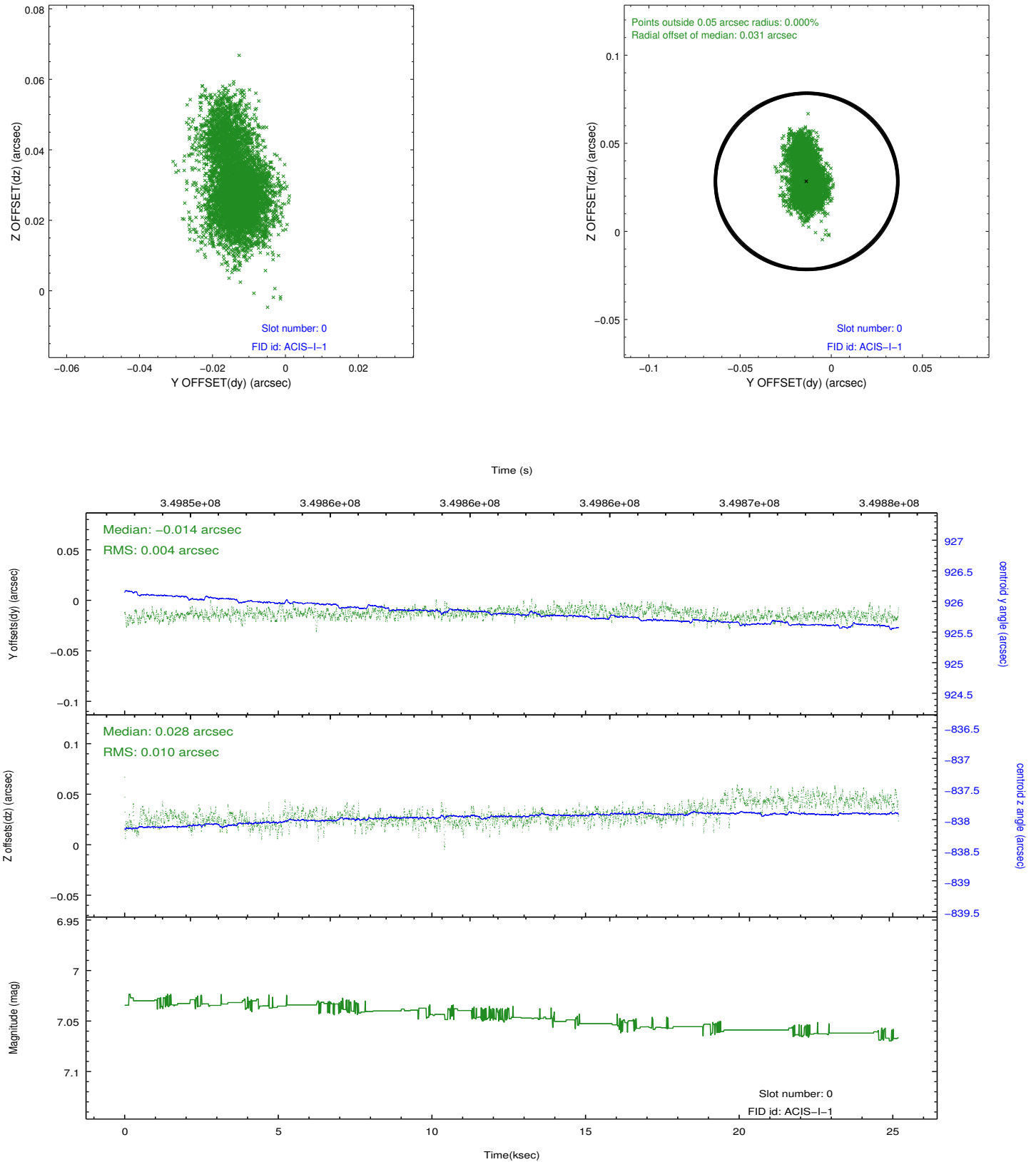


2.4.5 Slot 7

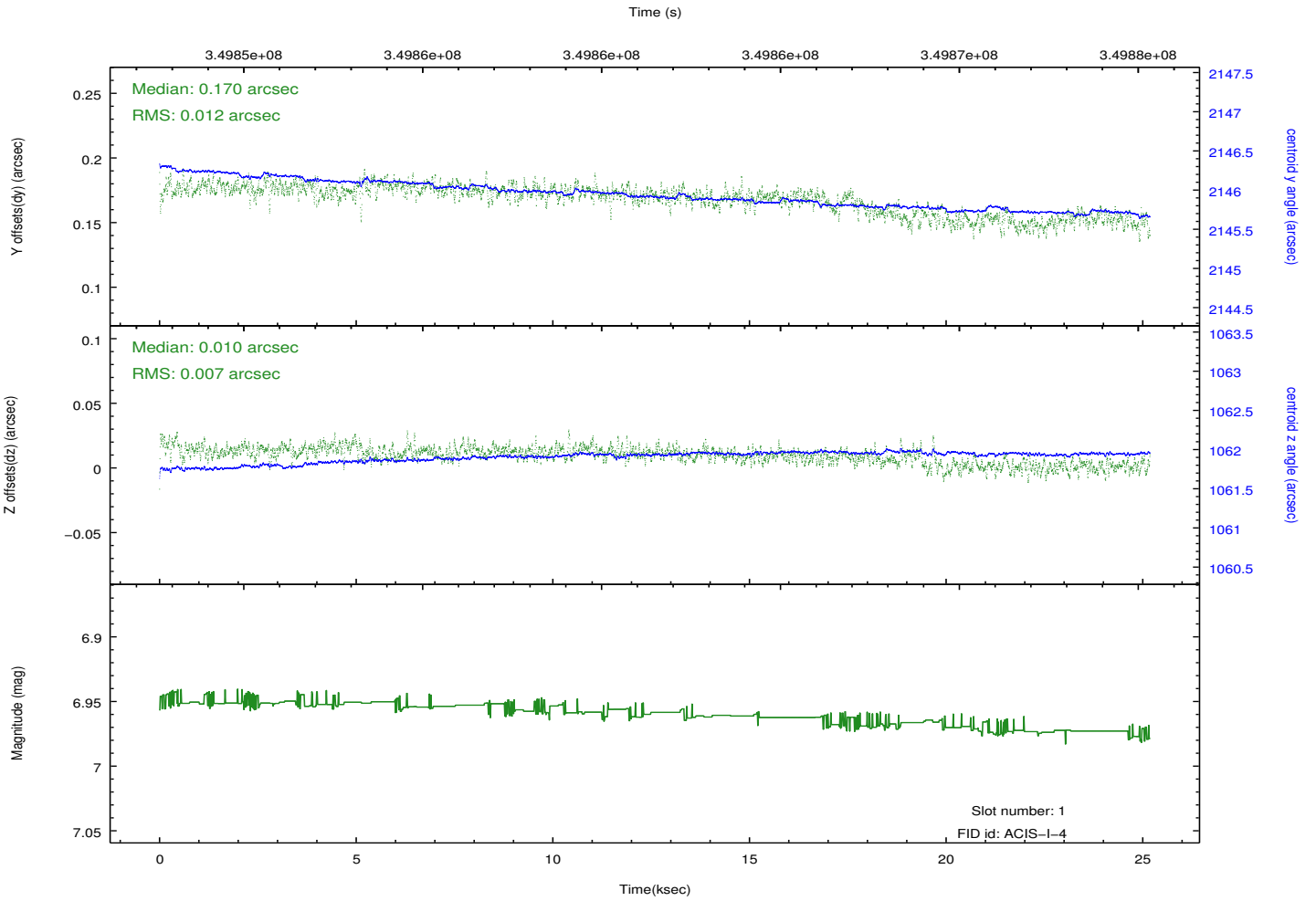
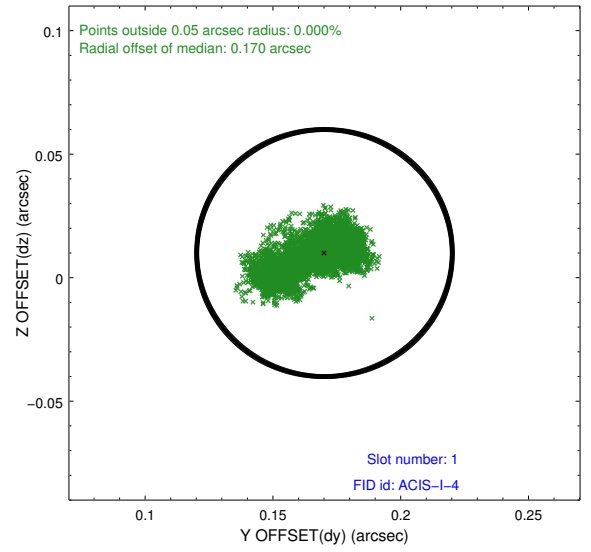
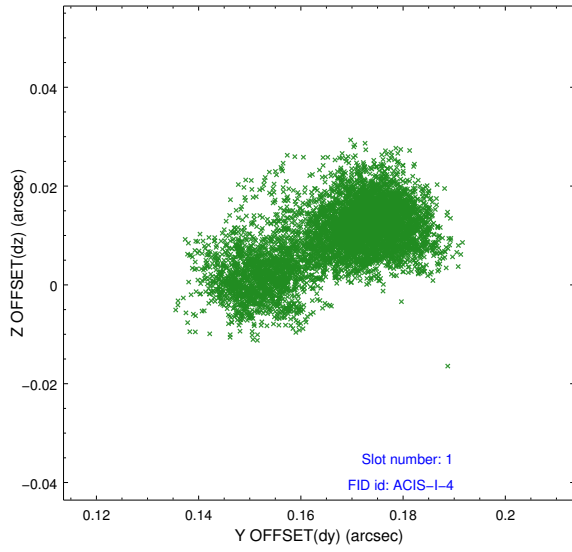


2.5 FID Slots

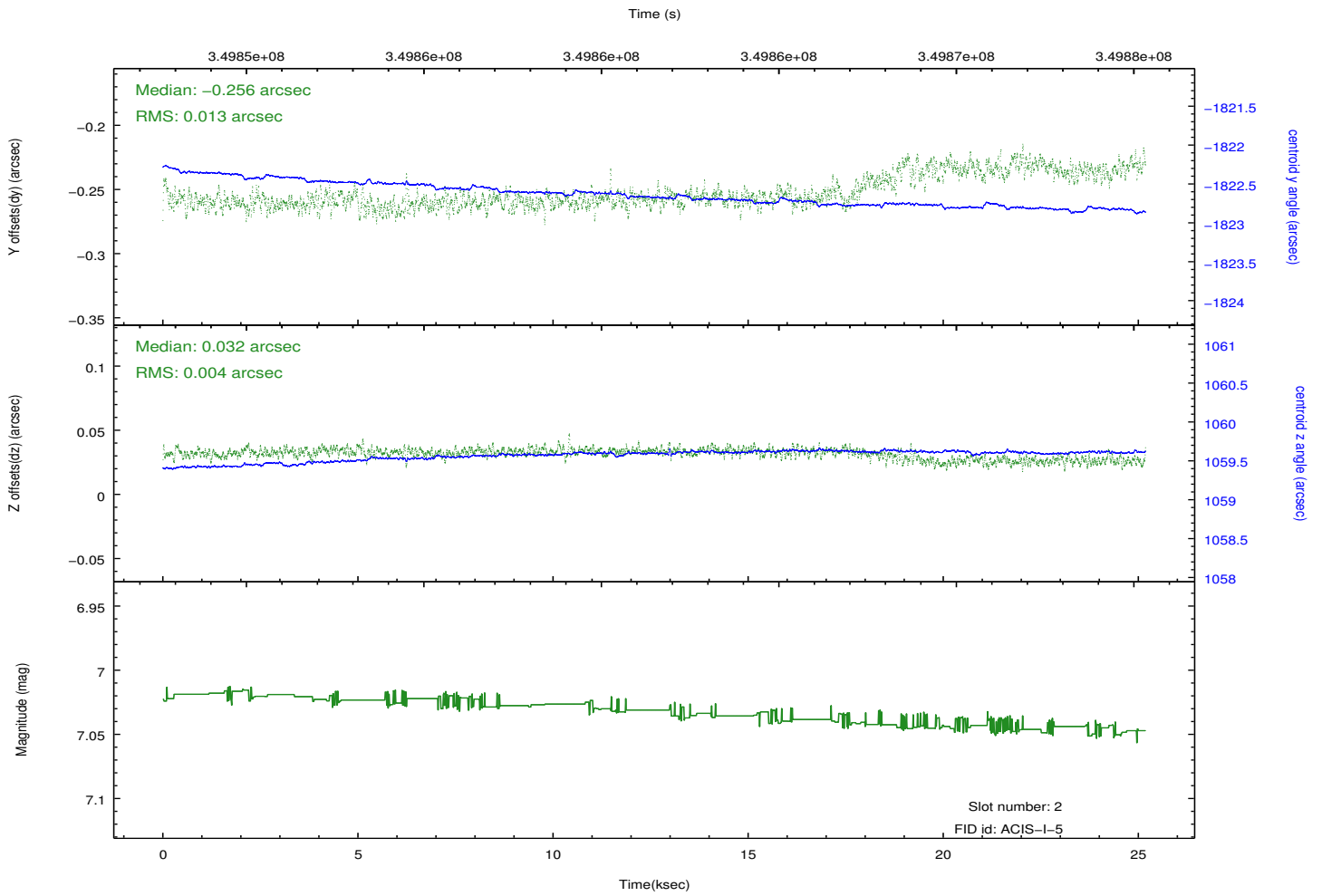
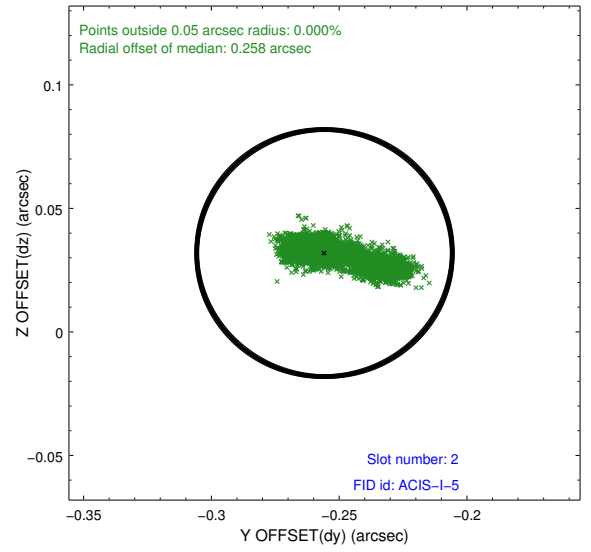
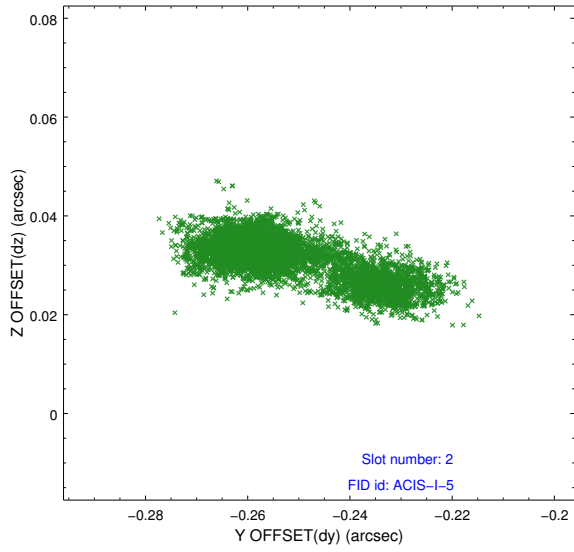
2.5.1 Slot 0



2.5.2 Slot 1



2.5.3 Slot 2



A Summary

A.1 Status

V&V Scientist	Beth Sundheim
V&V Date (YYYY-MM-DD)	2012.06.06
V&V Edition	1
V&V Disposition and Status	OK
V&V Charge Time	25.1750181

A.2 Comments

Joint proposal with HST.