

V&V Reference Report

L2 ASCDS Version : 8.4.5

Observation 10305 - L2 Version 2
Chandra X-Ray Center

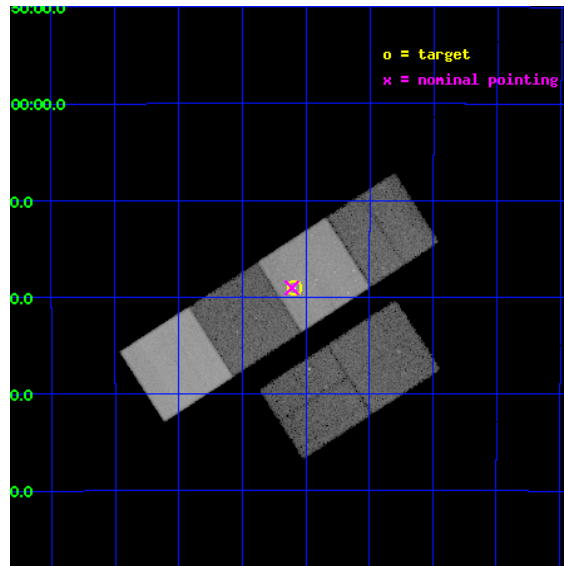
L2 Processing Date : Jun 13 2012

Contents

1	Front	2
2	OBI	3
2.1	OBI	3
2.1.1	Images	3
2.1.2	Bias	3
2.1.3	Parameters	4
2.1.4	Events	4
2.2	Compared Parameters	5
2.3	Aspect	6
2.4	Star Slots	9
2.4.1	Slot 3	9
2.4.2	Slot 4	10
2.4.3	Slot 5	11
2.4.4	Slot 6	12
2.4.5	Slot 7	13
2.5	FID Slots	14
2.5.1	Slot 0	14
2.5.2	Slot 1	15
2.5.3	Slot 2	16
A	Summary	17
A.1	Status	17
A.2	Comments	17

1 Front

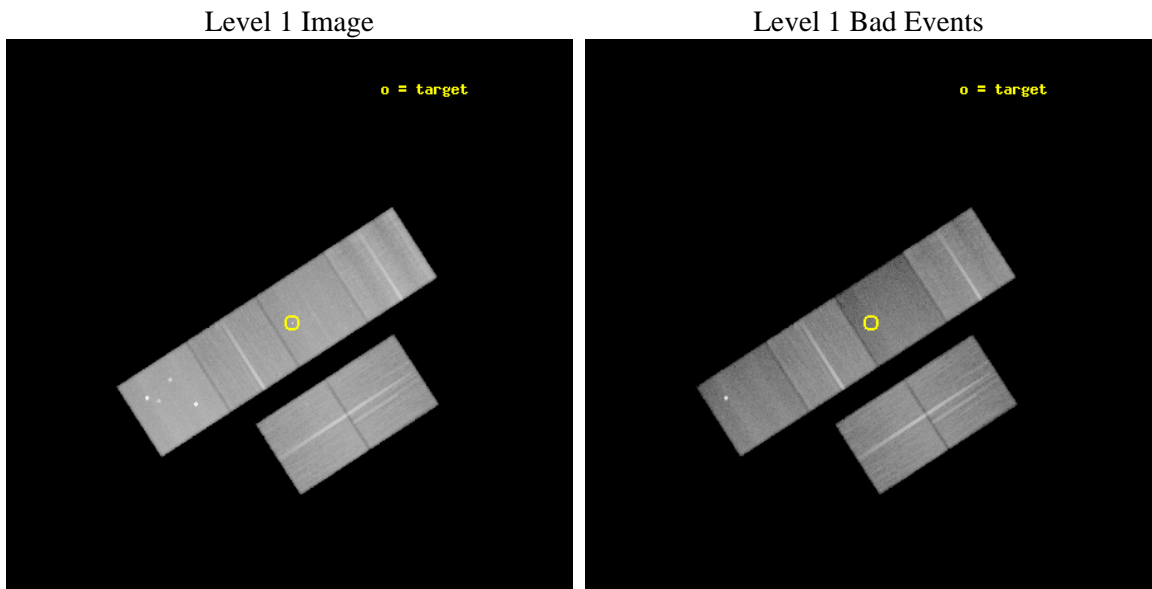
seq_num	701848	Sequence number
obs_id	10305	Observation id
title	Identifying High-Redshift X-ray Jets from Radio-Loud Quasars with Chandra	Proposal title
observer	Prof. William Brandt	Principal investigator
object	PMN J2219-2719	Source name
dtycycle	0	
cycle	P	events from which exps? Prim/Second/Both
ra_targ	334.897083	Observer's specified target RA [deg]
dec_targ	-27.317444	Observer's specified target Dec [deg]
ra_nom	334.90254634596	Nominal RA [deg]
dec_nom	-27.31753753928	Nominal Dec [deg]
roll_nom	327.15913585711	Nominal Roll [deg]
revision	2	Processing version of data
ontime	38335.999857247	Sum of GTIs [s]
livetime	37850.566343887	Livetime [s]
ontime2	38332.758846879	Sum of GTIs [s]
ontime3	38335.999857247	Sum of GTIs [s]
ontime5	38335.999857247	Sum of GTIs [s]
ontime6	38335.999857247	Sum of GTIs [s]
ontime7	38335.999857247	Sum of GTIs [s]
ontime8	38329.517796814	Sum of GTIs [s]
l2events	454741	Number of level 2 events



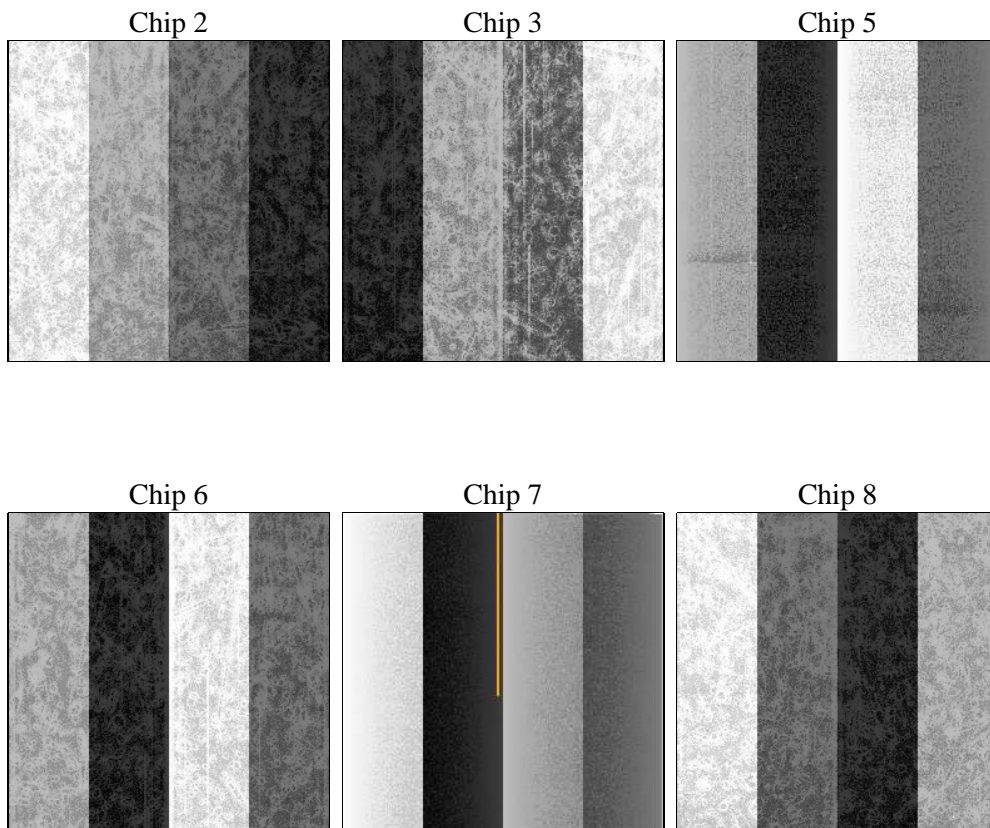
2 OBI

2.1 OBI

2.1.1 Images



2.1.2 Bias



2.1.3 Parameters

obi_num	0	Obi number	sched_exp_time	38161.583000	[s] Scheduled observation exposure time
ascdsver	8.4.5	Processing system revision	ontime	38335.999857247	Sum of GTIs [s]
caldbver	4.4.10	 	ontime2	38332.758846879	Sum of GTIs [s]
date	2012-06-13T06:05:25	Date and time of file creation	ontime3	38335.999857247	Sum of GTIs [s]
revision	2	Processing version of data	ontime5	38335.999857247	Sum of GTIs [s]
			ontime6	38335.999857247	Sum of GTIs [s]
			ontime7	38335.999857247	Sum of GTIs [s]
			ontime8	38329.517796814	Sum of GTIs [s]
			l1events	2085802	Number of level 1 events

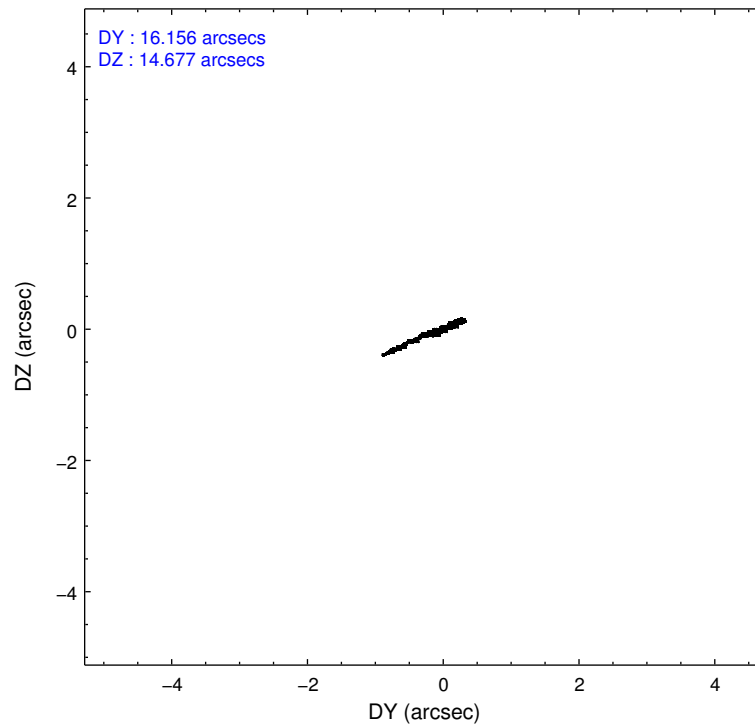
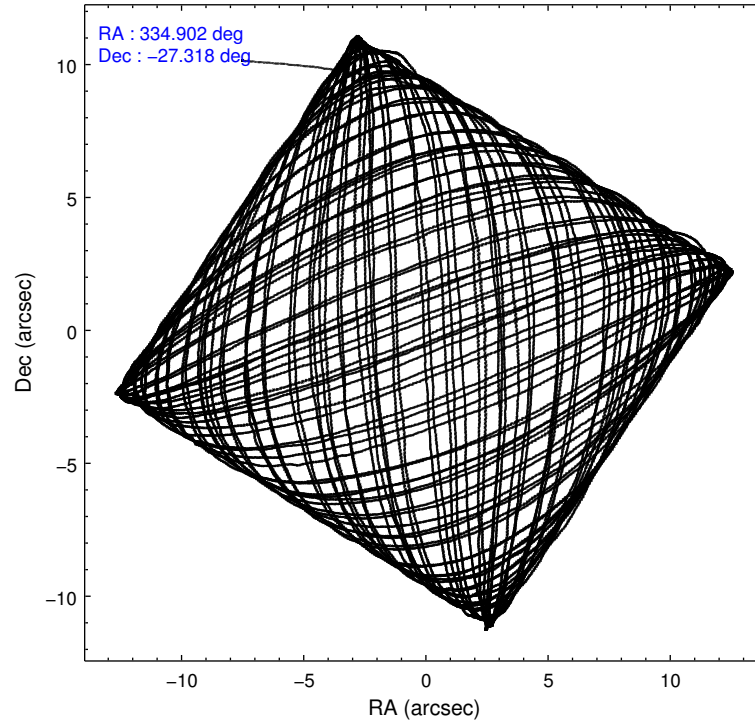
2.1.4 Events

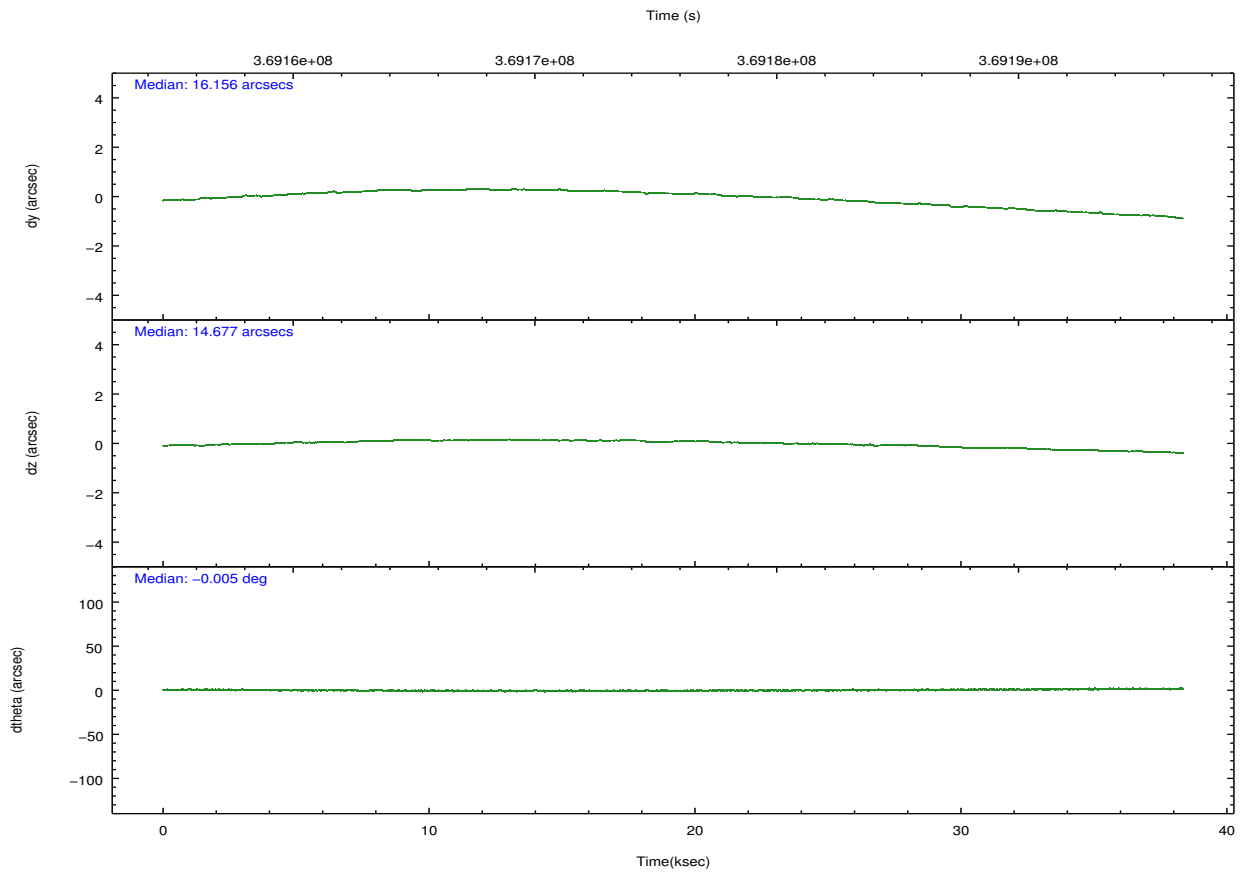
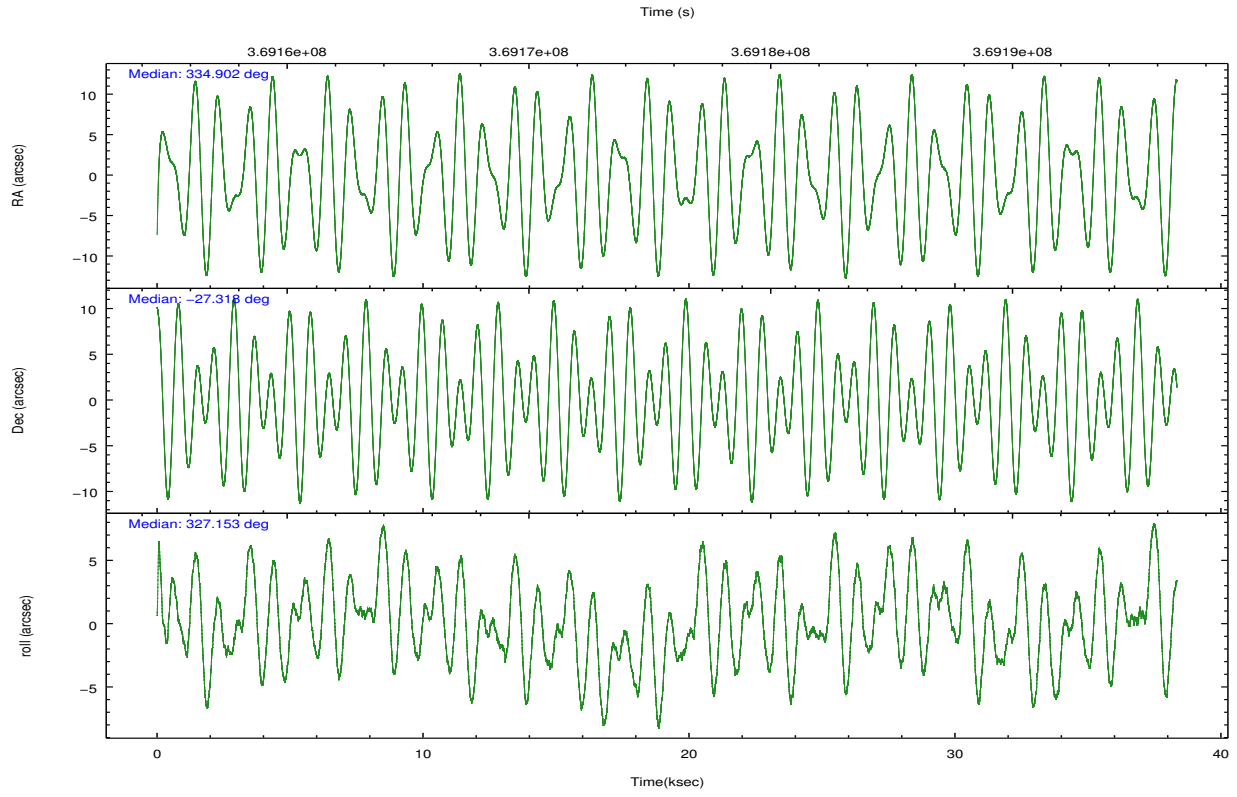
	ccd 2	ccd 3	ccd 5	ccd 6	ccd 7	ccd 8		ccd 2	ccd 3	ccd 5	ccd 6	ccd 7	ccd 8
level 1 events	339888	306761	422014	317560	311693	387886	grade 0 events	11592	10637	31838	11673	16396	28194
rejected events	309097	277973	197549	285126	158279	287527		3%	3%	7%	3%	5%	7%
rejected %	90%	90%	46%	89%	50%	74%	grade 1 events	209	177	1160	178	529	354
								0%	0%	0%	0%	0%	0%
							grade 2 events	7651	6287	66878	7469	32902	23818
								2%	2%	15%	2%	10%	6%
							grade 3 events	3120	3319	10028	3417	14435	11252
								0%	1%	2%	1%	4%	2%
							grade 4 events	3304	3193	8999	3375	14122	10300
								0%	1%	2%	1%	4%	2%
							grade 5 events	9125	10993	36565	11013	33025	16941
								2%	3%	8%	3%	10%	4%
							grade 6 events	5288	5492	107850	6692	76338	27299
								1%	1%	25%	2%	24%	7%
							grade 7 events	299599	266663	158696	273743	123946	269728
								88%	86%	37%	86%	39%	69%

2.2 Compared Parameters

Parameter	Planned	Actual	Parameter	Planned	Actual
Instrument	ACIS	ACIS	Obspar format version number	7	7
Detector	ACIS-235678	ACIS-235678	Obspar file type	PREDICTED	ACTUAL
Grating	NONE	NONE	Obspar update status	NONE	UPDATED
Data mode	VFAINT	VFAINT	CCD I0 on	N	N
Observation mode	POINTING	POINTING	CCD I1 on	N	N
[deg] Pointing RA	334.871788	334.9025463459557	CCD I2 on	O1	Y
[deg] Pointing Dec	-27.316550	-27.31753753927989	CCD I3 on	O2	Y
[deg] Pointing Roll	326.988389	327.1591358571084	CCD S0 on	N	N
[mm] SIM focus pos	-0.684267	-0.6828225247311905	CCD S1 on	Y	Y
[mm] SIM defocus	0	0.001444936568705701	CCD S2 on	Y	Y
[mm] SIM translation stage pos	-190.132523	-190.1400660498719	CCD S3 on	Y	Y
[mm] SIM translation stage offset	0	0.00754346686406393	CCD S4 on	Y	Y
[s] Observation start time (MET)	369156729.184000	369155558.11875	CCD S5 on	N	N
Observation start date	2009-09-12T15:31:03	2009-09-12T15:12:38	Number of optional ACIS chips dropped	0	0
[s] Observation end time (MET)	369194890.184000	369195116.45824	On-chip summing requested	N	N
Observation end date	2009-09-13T02:07:04	2009-09-13T02:11:56	Subarray requested	NONE	NONE
Read mode	TIMED	TIMED	Alternating exposures requested	N	N
			[s] Primary exposure time	0.000000	3.2

2.3 Aspect



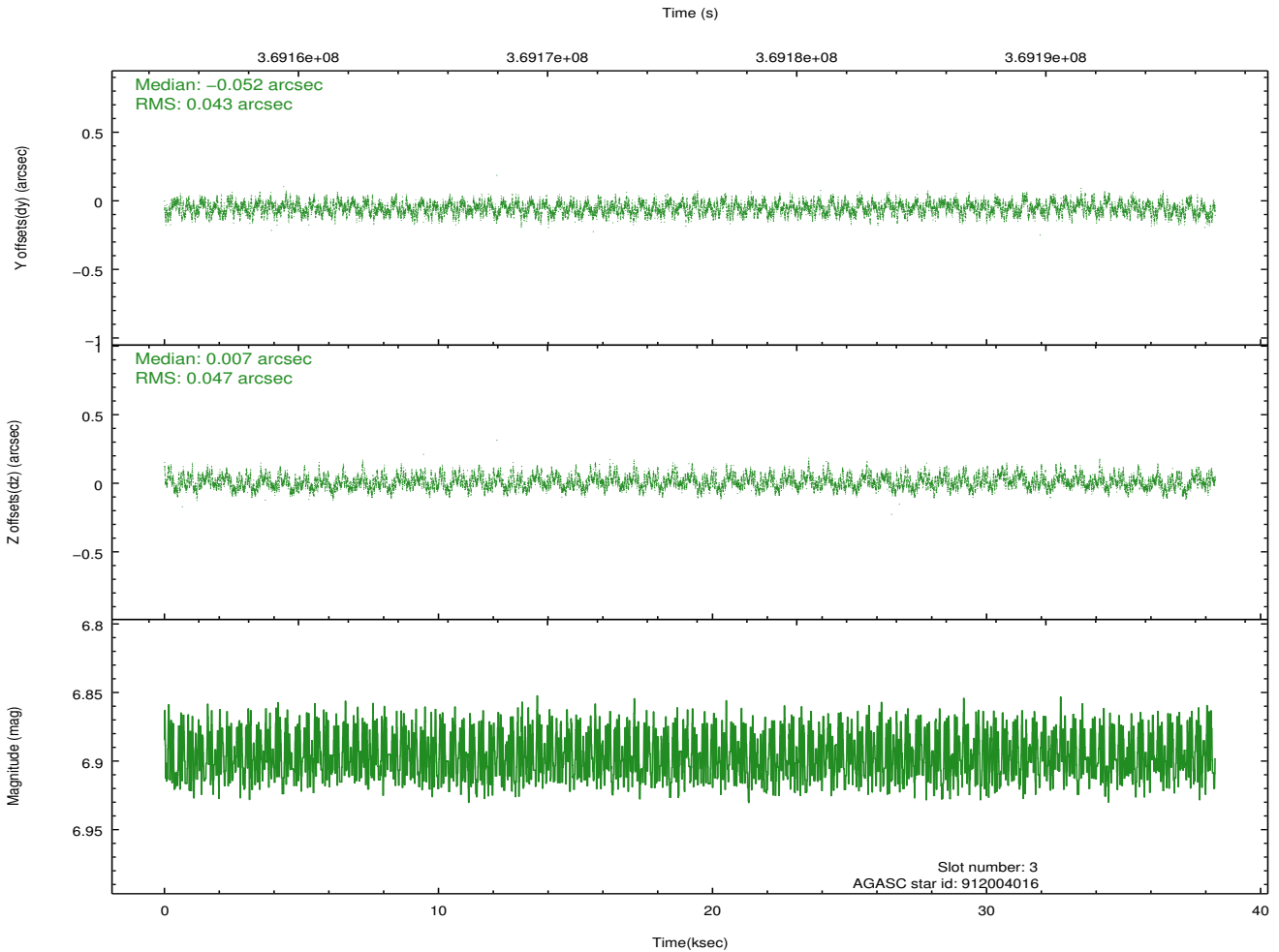
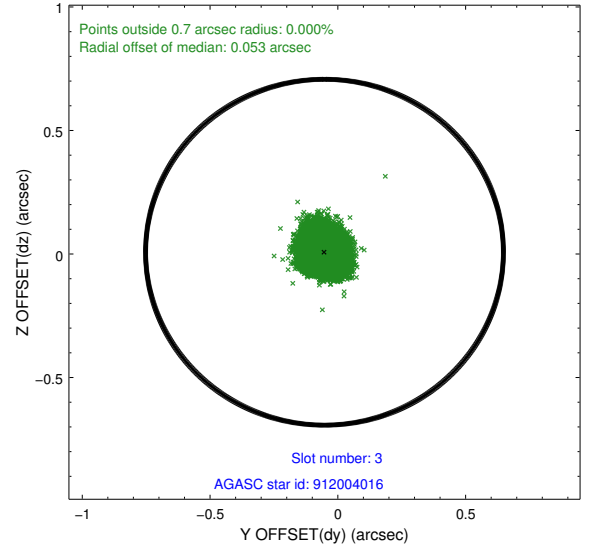
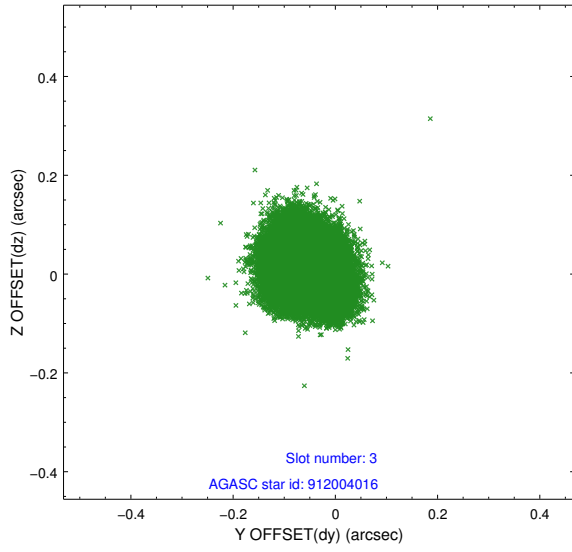


Slot Statistics

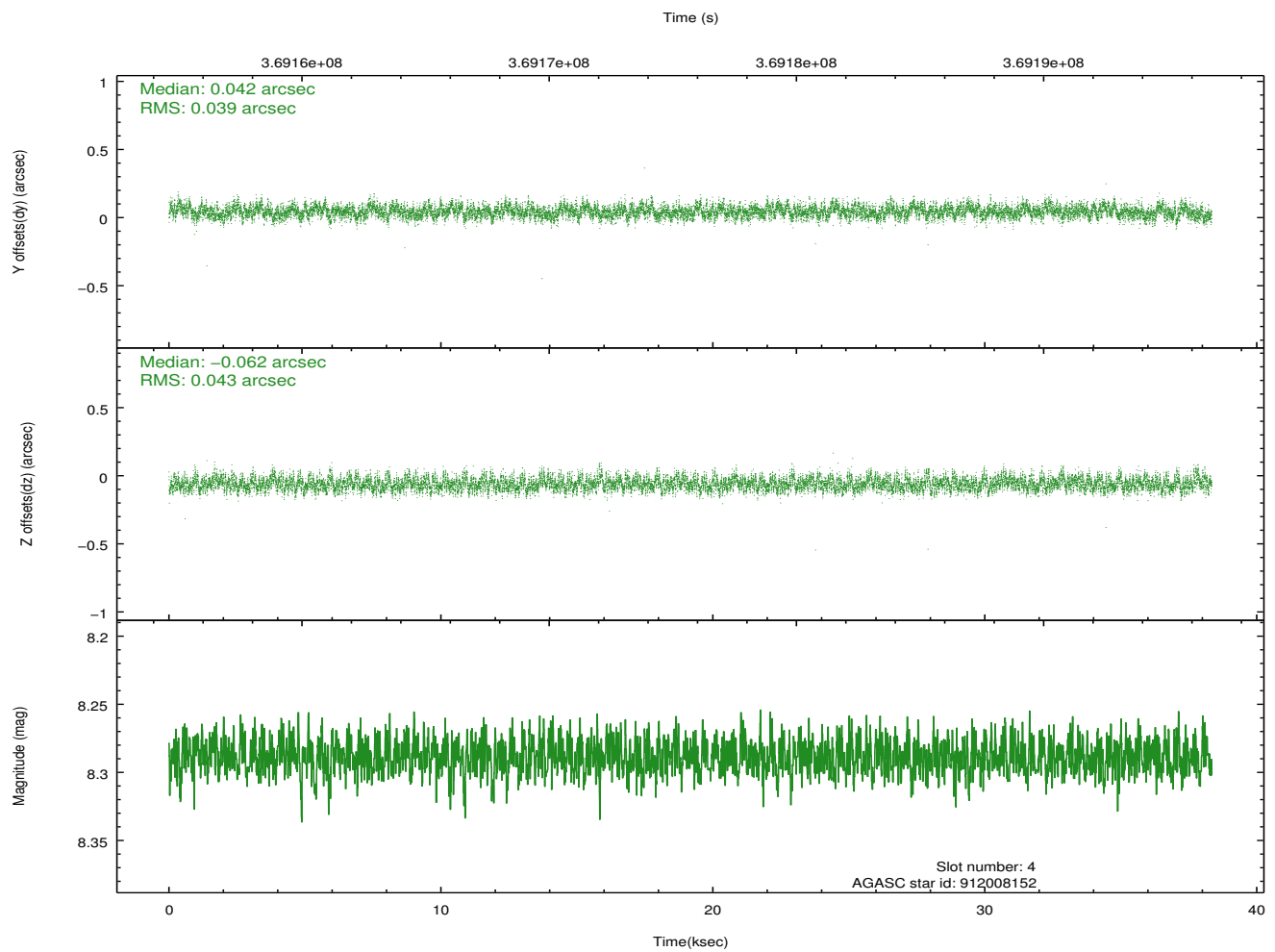
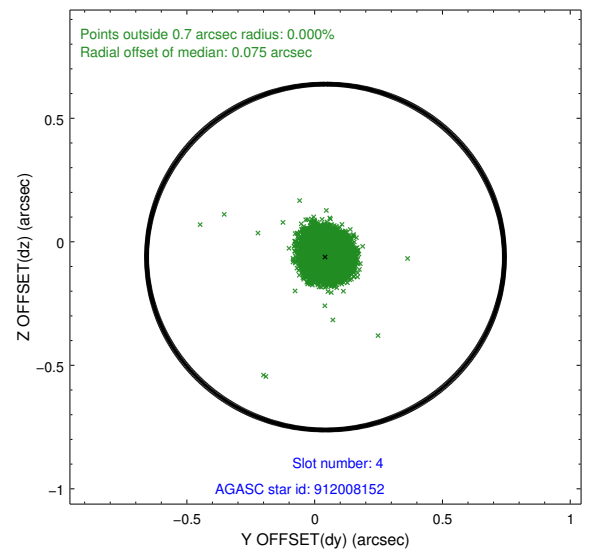
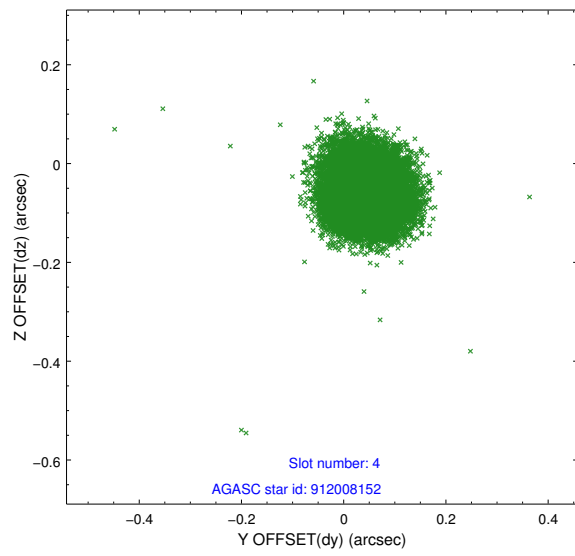
slot	status	id	mag	n_pts	med_dy	med_dz	dr1	dr2	ra	dec	mean_y	mean_z
0	FID	ACIS-S-2	6.92	9351	-0.097	-0.029	0.008	0.022	0.000000	0.000000	-769.15	-1736.05
1	FID	ACIS-S-4	7.00	9352	0.192	0.055	0.006	0.019	0.000000	0.000000	2144.39	172.51
2	FID	ACIS-S-5	7.03	9351	-0.126	-0.017	0.008	0.022	0.000000	0.000000	-1822.01	166.11
3	GUIDE	912004016	6.90	18705	-0.052	0.007	0.069	0.108	334.322948	-27.389925	-1323.96	-1180.82
4	GUIDE	912008152	8.29	18700	0.042	-0.062	0.062	0.099	334.601001	-27.294801	-768.28	-407.20
5	GUIDE	912919096	9.95	18682	0.132	-0.010	0.136	0.221	335.323372	-27.239141	1061.95	1019.17
6	GUIDE	912927016	7.66	18705	-0.224	0.034	0.058	0.094	334.950017	-27.388764	351.50	-81.60
7	GUIDE	913310352	9.57	18684	0.103	0.021	0.132	0.223	335.178898	-27.920777	2005.79	-1292.48

2.4 Star Slots

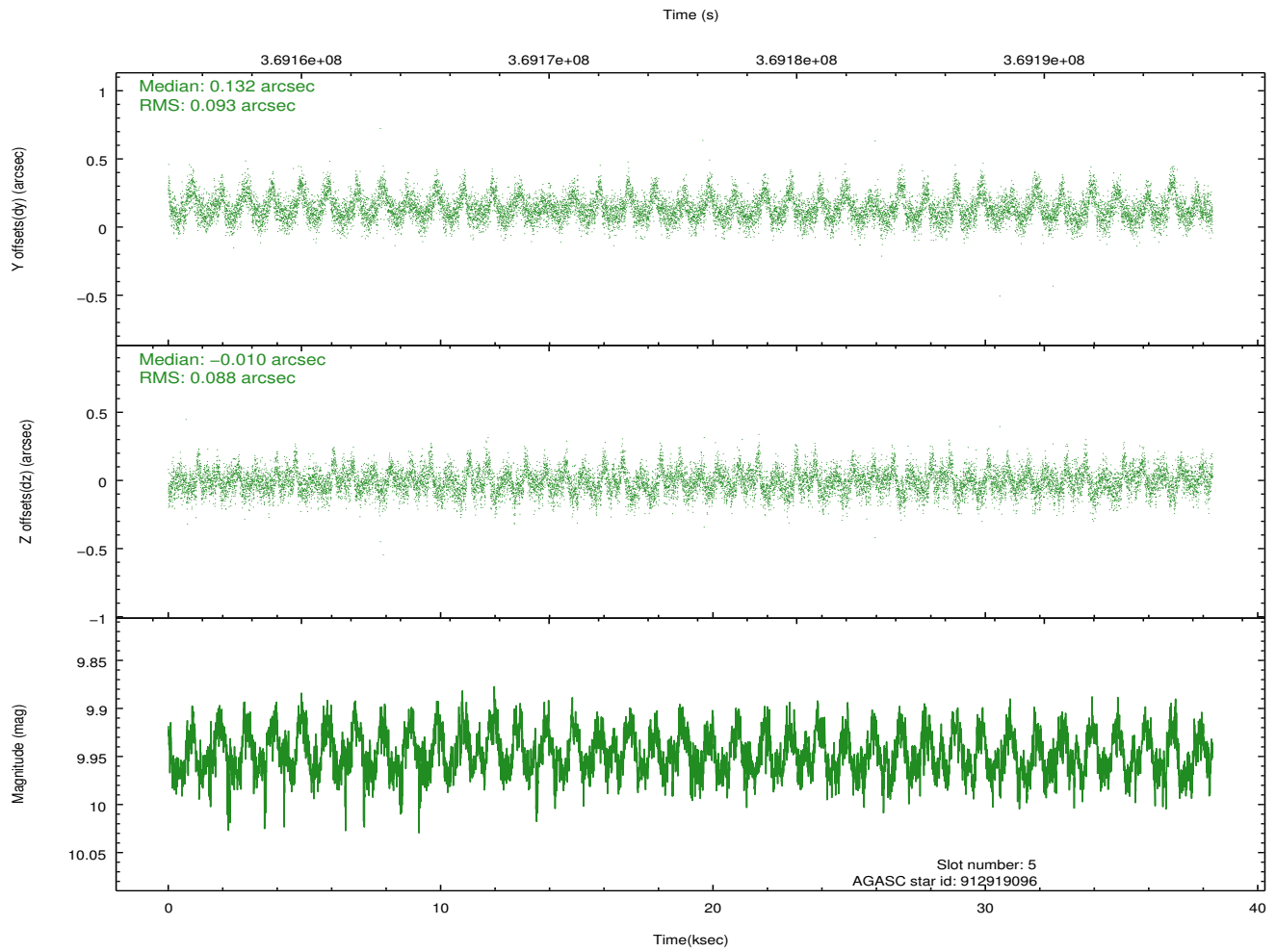
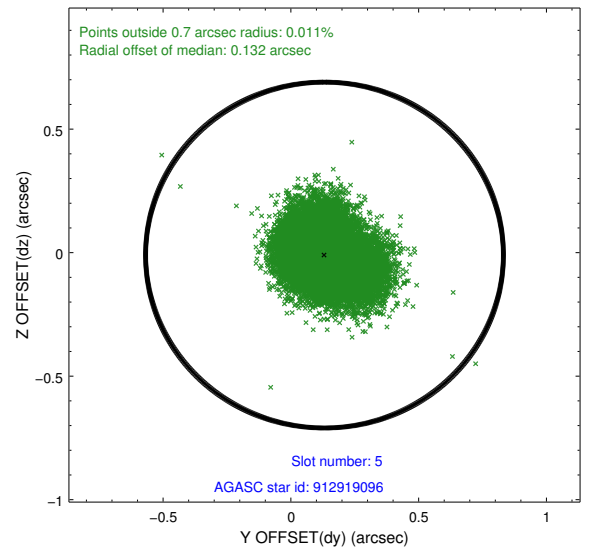
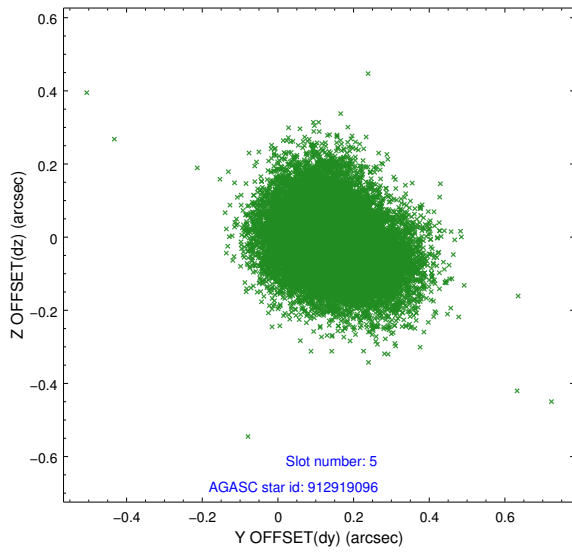
2.4.1 Slot 3



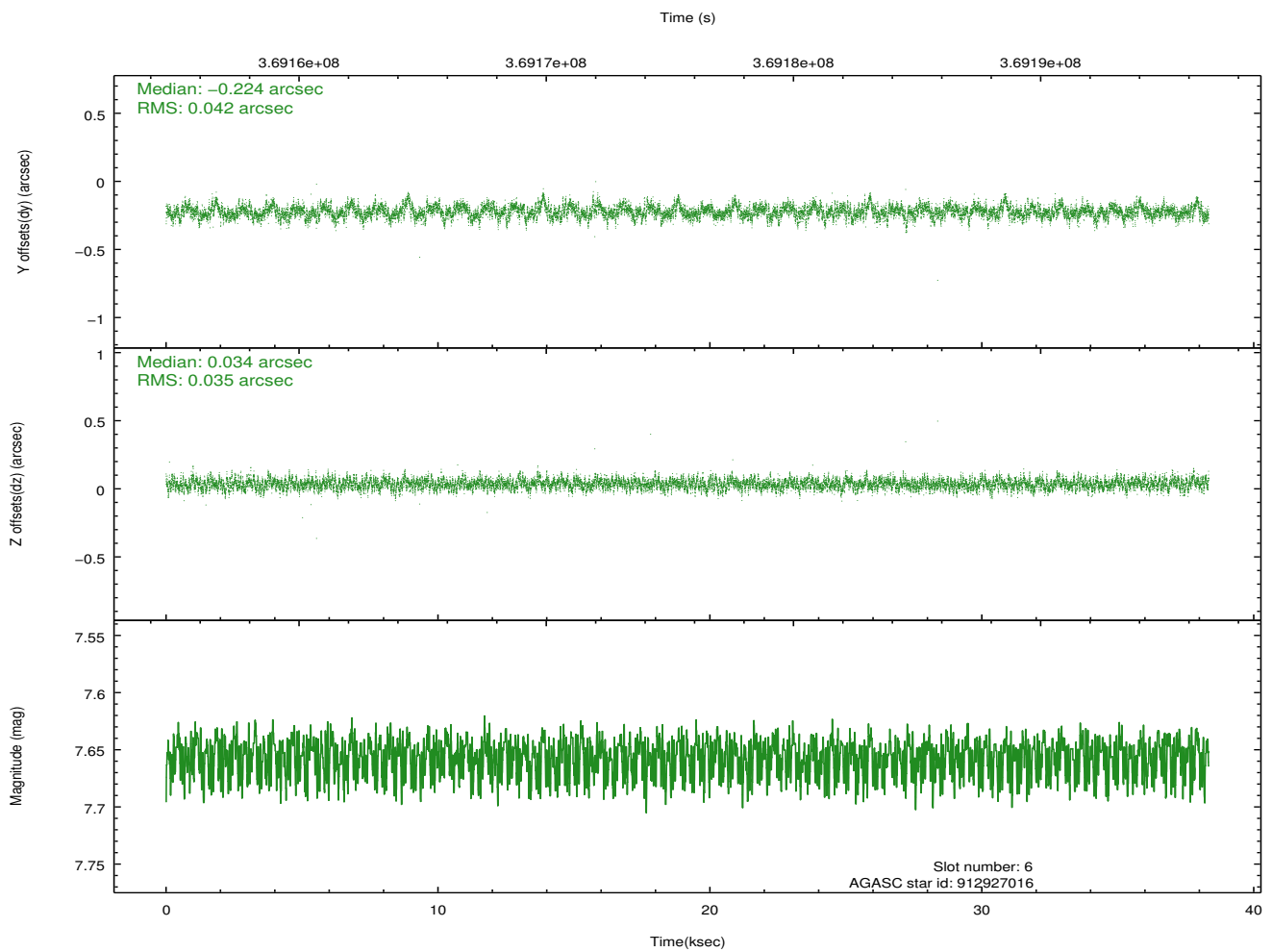
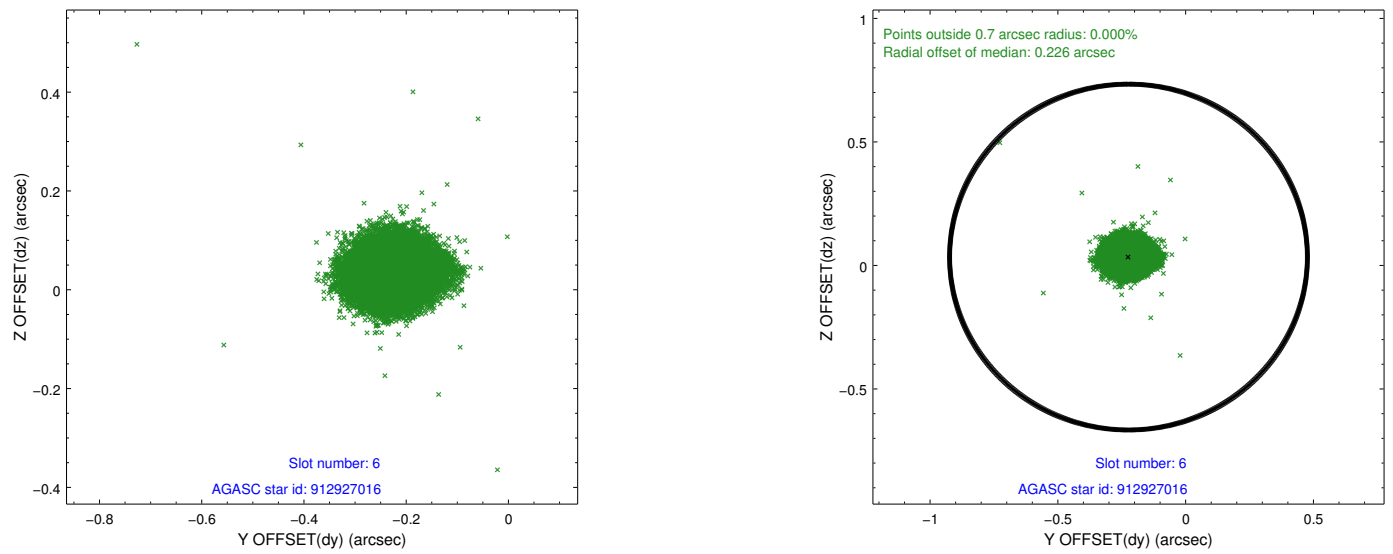
2.4.2 Slot 4



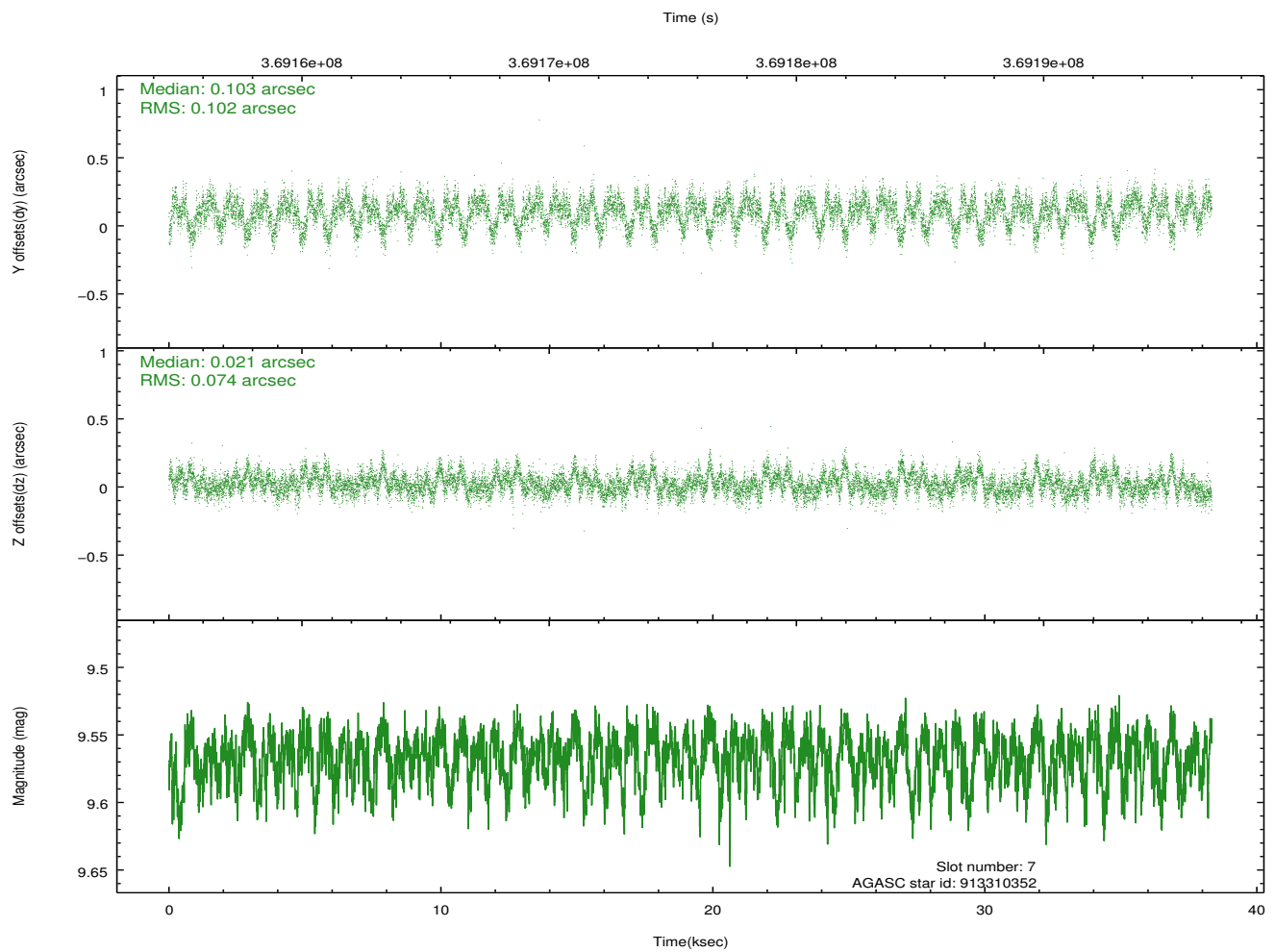
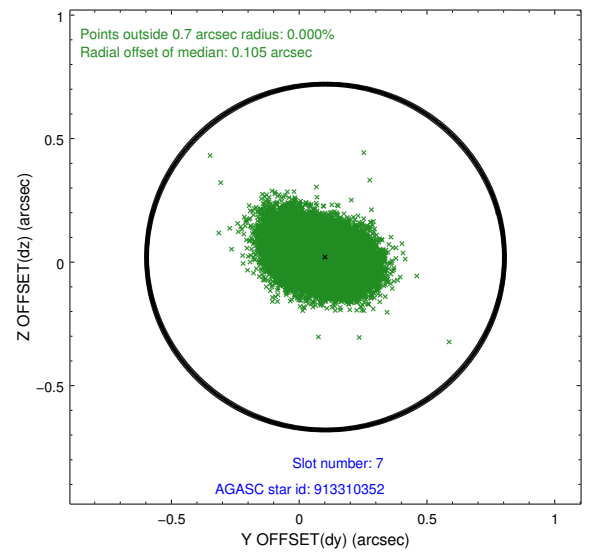
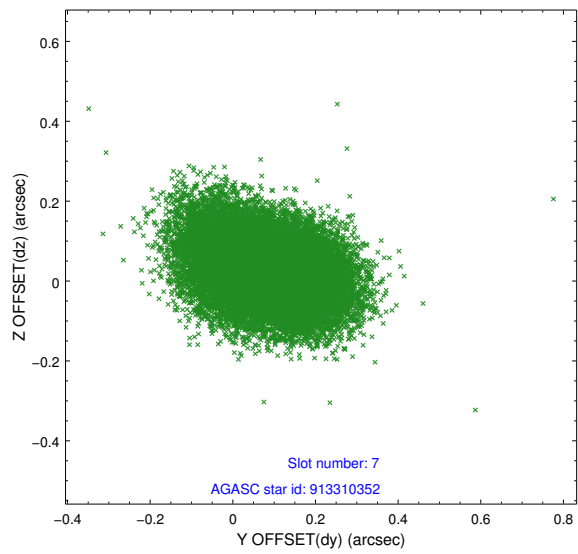
2.4.3 Slot 5



2.4.4 Slot 6

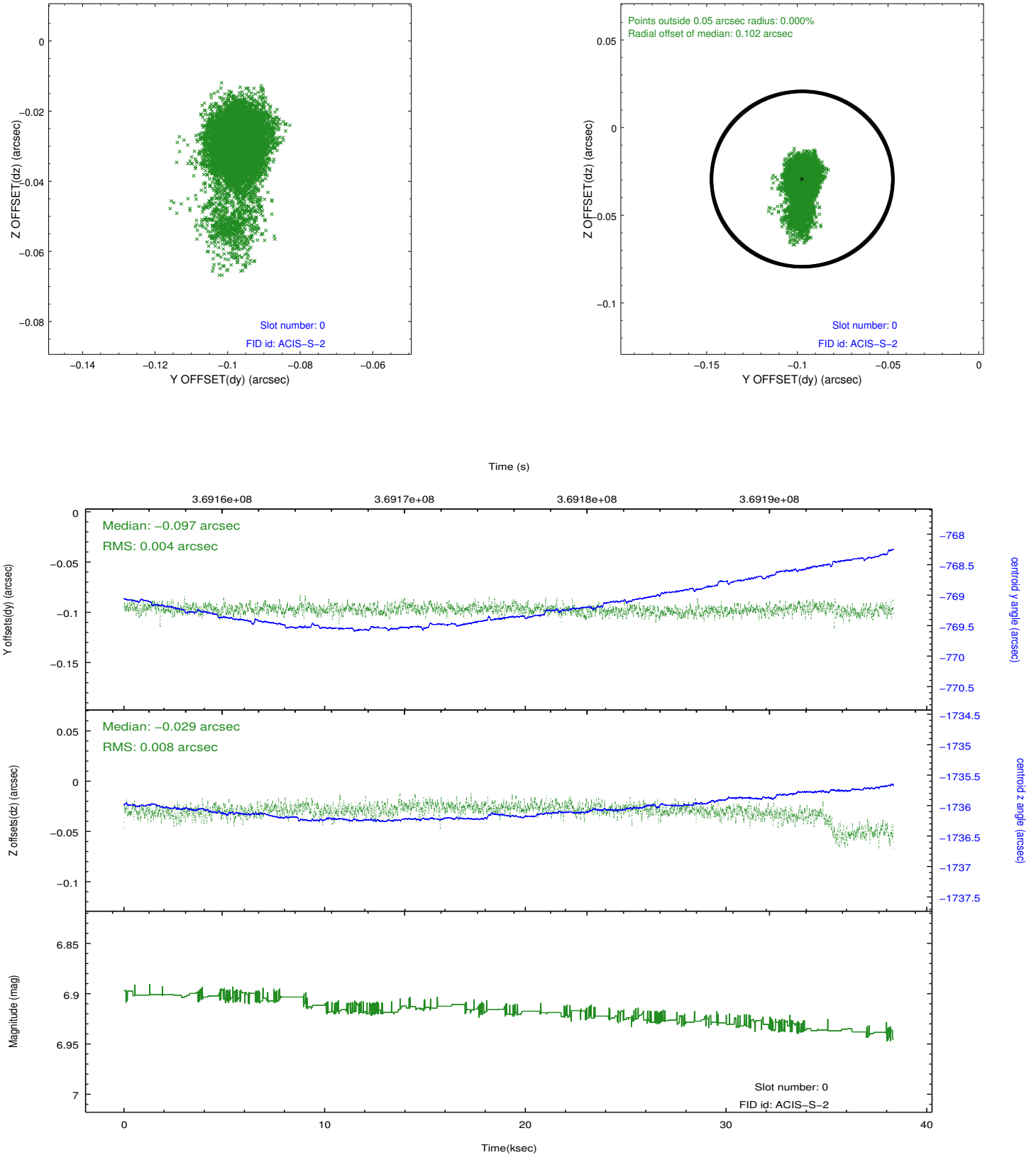


2.4.5 Slot 7

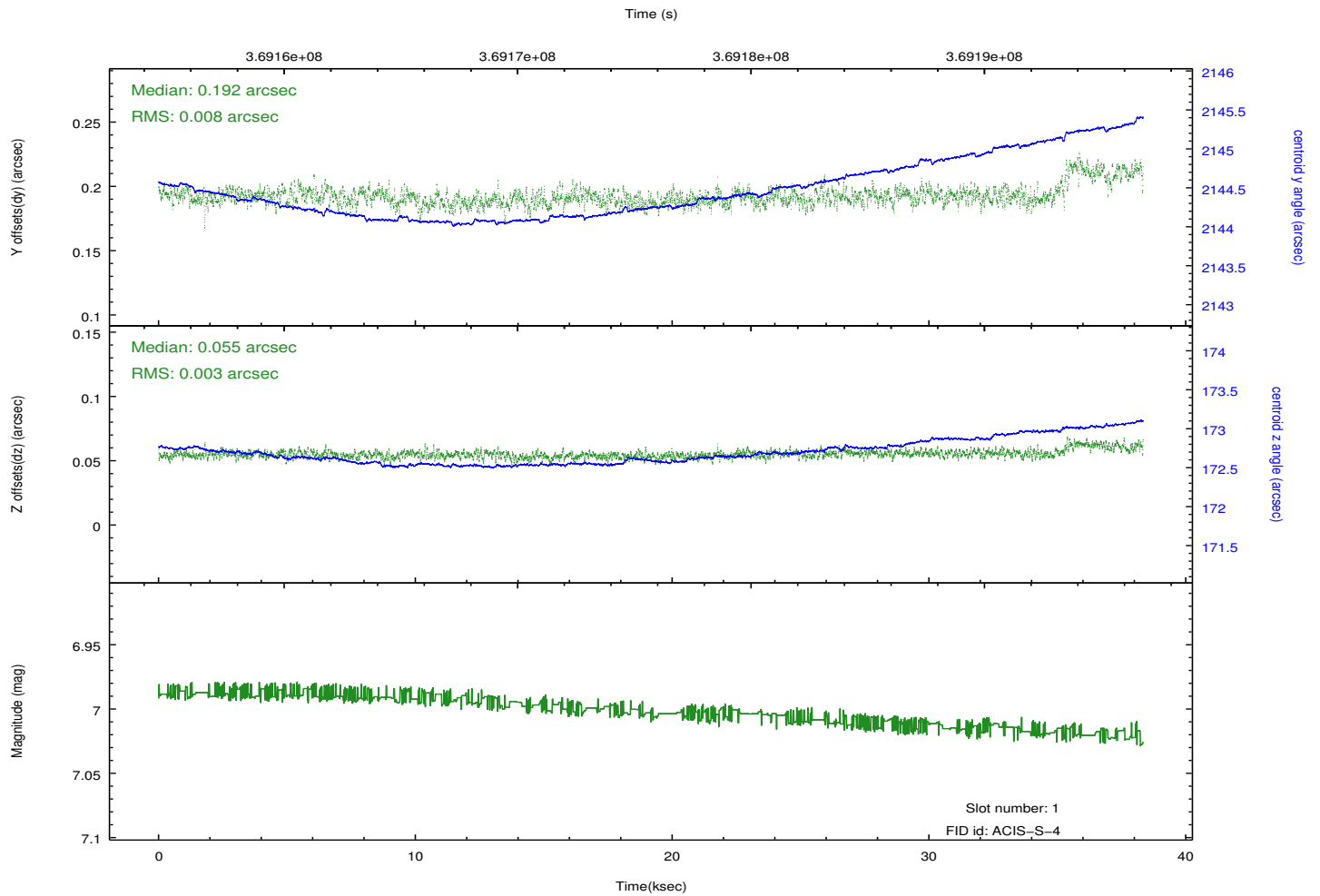
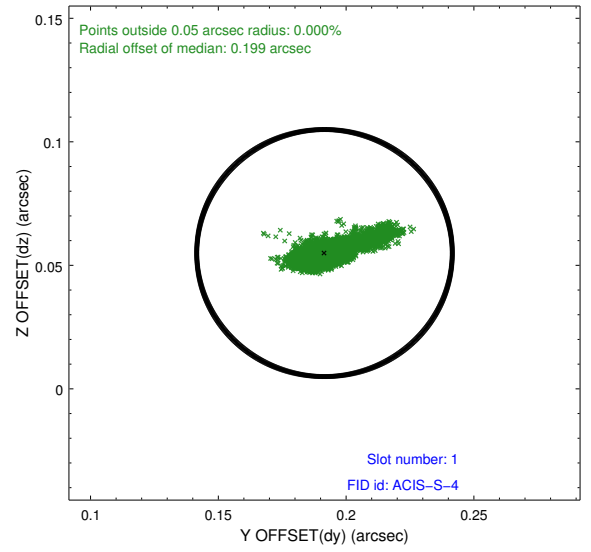
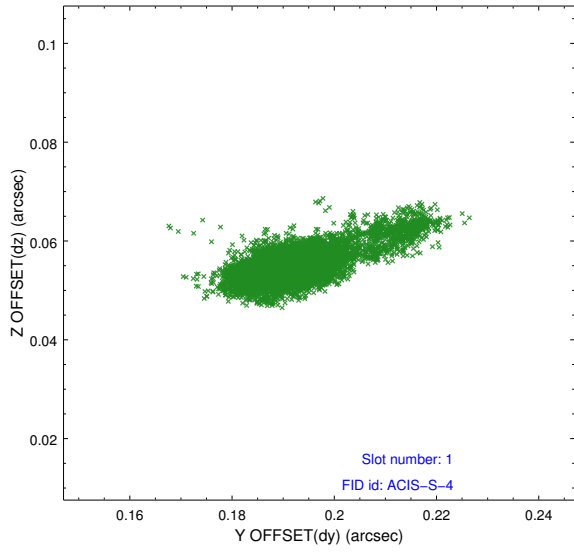


2.5 FID Slots

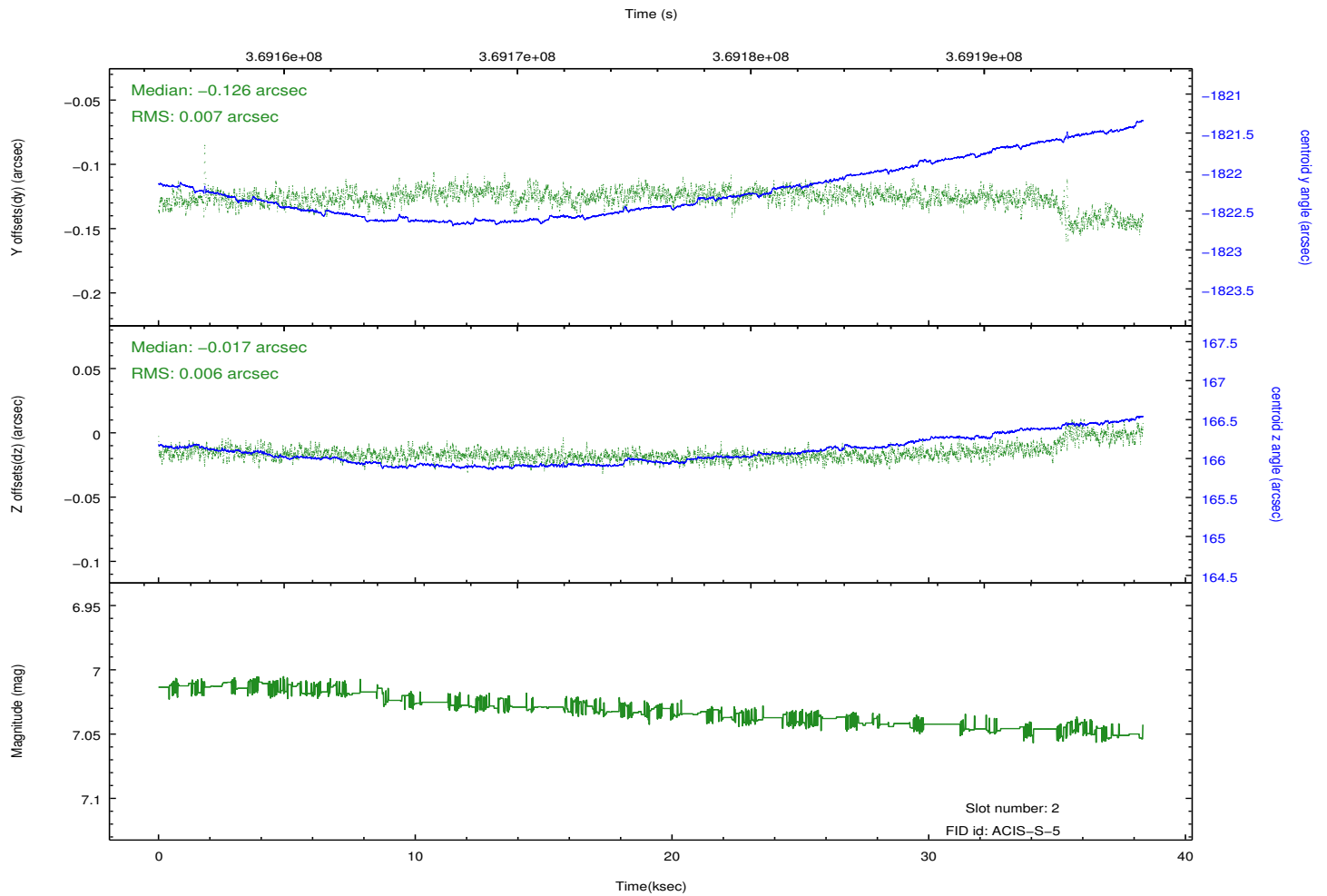
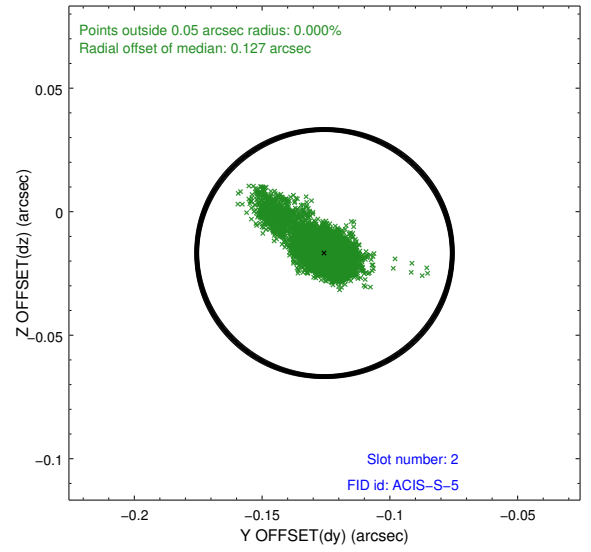
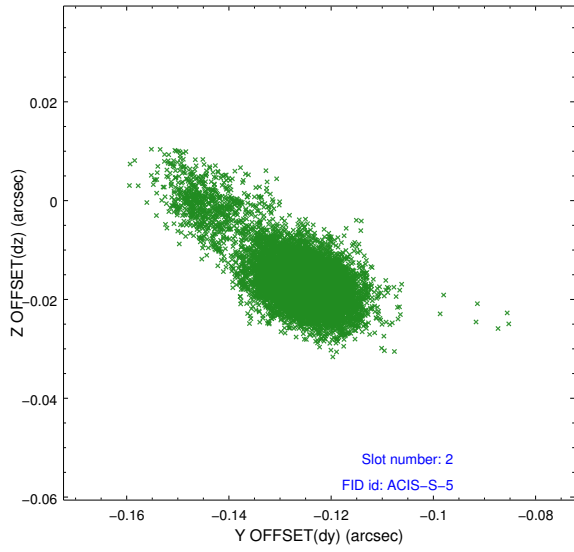
2.5.1 Slot 0



2.5.2 Slot 1



2.5.3 Slot 2



A Summary

A.1 Status

V&V Scientist	Jen Lauer
V&V Date (YYYY-MM-DD)	2012.06.17
V&V Edition	1
V&V Disposition and Status	OK
V&V Charge Time	38.335999857247

A.2 Comments