

V&V Reference Report

L2 ASCDS Version : 8.4.4

Observation 10705 - L2 Version 2
Chandra X-Ray Center

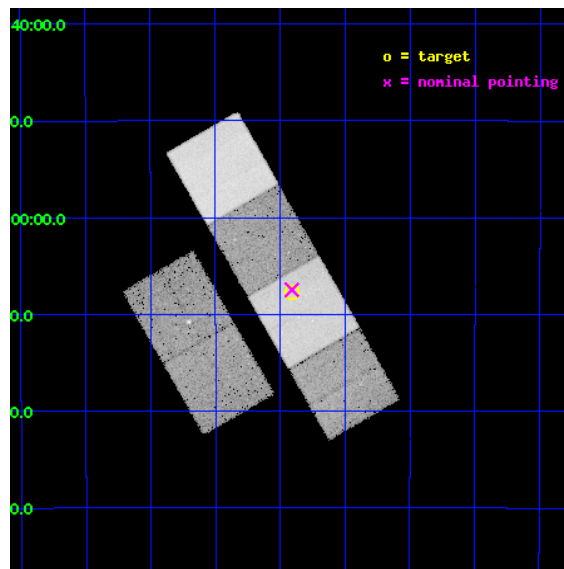
L2 Processing Date : May 22 2012

Contents

1	Front	2
2	OBI	3
2.1	OBI	3
2.1.1	Images	3
2.1.2	Bias	3
2.1.3	Parameters	4
2.1.4	Events	4
2.2	Compared Parameters	5
2.3	Aspect	6
2.4	Star Slots	9
2.4.1	Slot 3	9
2.4.2	Slot 4	10
2.4.3	Slot 5	11
2.4.4	Slot 6	12
2.4.5	Slot 7	13
2.5	FID Slots	14
2.5.1	Slot 0	14
2.5.2	Slot 1	15
2.5.3	Slot 2	16
A	Summary	17
A.1	Status	17
A.2	Comments	17

1 Front

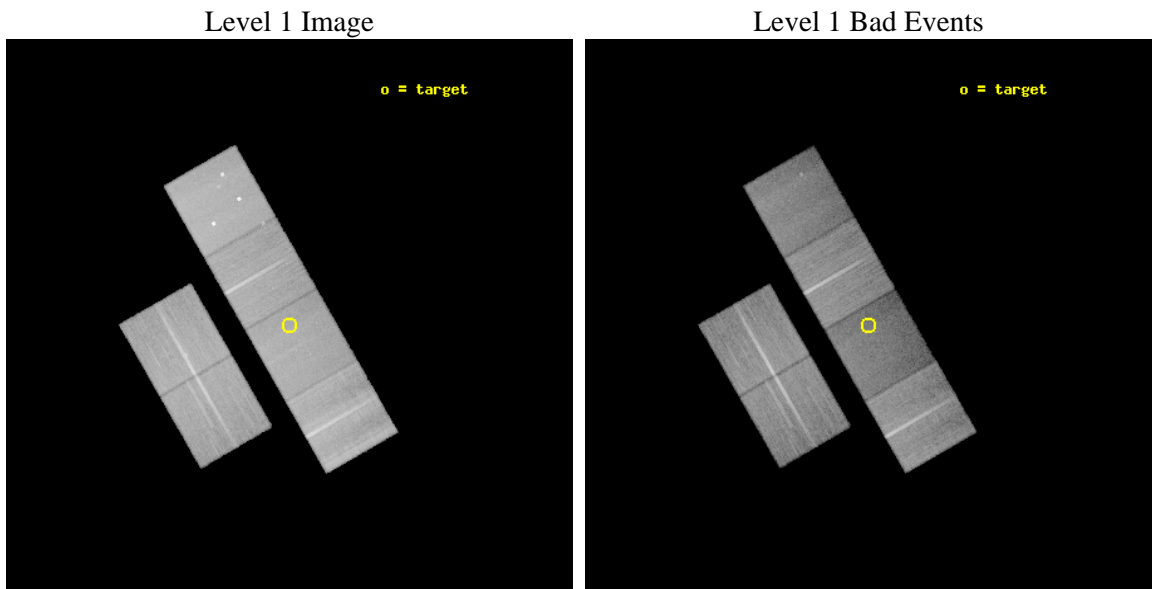
seq_num	501161	Sequence number
obs_id	10705	Observation id
title	Long GRB Jet Breaks	Proposal title
observer	Professor Gordon Garmire	Principal investigator
object	GRB 080913	Source name
dtcycle	0	
cycle	P	events from which exps? Prim/Second/Both
ra_targ	65.727917	Observer's specified target RA [deg]
dec_targ	-25.1295	Observer's specified target Dec [deg]
ra_nom	65.727741342551	Nominal RA [deg]
dec_nom	-25.124661231144	Nominal Dec [deg]
roll_nom	60.156553243518	Nominal Roll [deg]
revision	2	Processing version of data
ontime	31081.599884272	Sum of GTIs [s]
livetime	30688.025951444	Livetime [s]
ontime2	31078.358883977	Sum of GTIs [s]
ontime3	31078.358883917	Sum of GTIs [s]
ontime5	31081.599884272	Sum of GTIs [s]
ontime6	31081.599884272	Sum of GTIs [s]
ontime7	31081.599884272	Sum of GTIs [s]
ontime8	31081.599884272	Sum of GTIs [s]
l2events	342557	Number of level 2 events



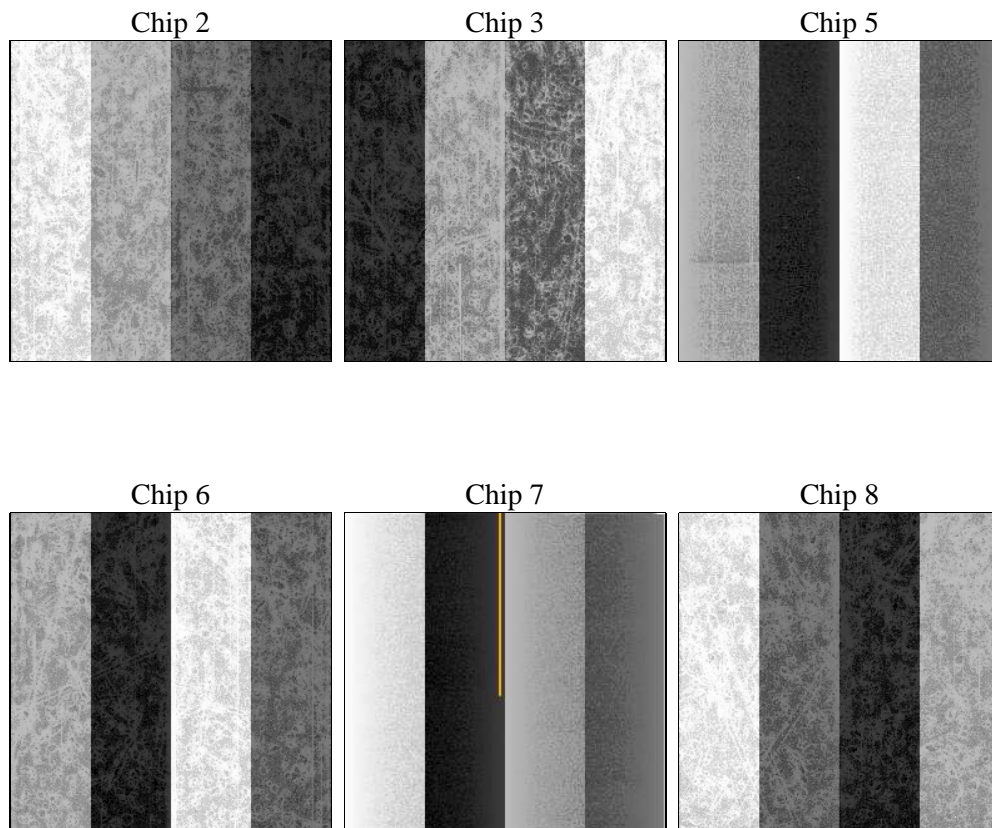
2 OBI

2.1 OBI

2.1.1 Images



2.1.2 Bias



2.1.3 Parameters

obi_num	2	Obi number	sched_exp_time	30900.000000	[s] Scheduled observation exposure time
ascdsver	8.4.4	Processing system revision	ontime	31081.599884272	Sum of GTIs [s]
caldsver	4.4.9	 	ontime2	31078.358883977	Sum of GTIs [s]
date	2012-05-22T11:21:33	Date and time of file creation	ontime3	31078.358883917	Sum of GTIs [s]
revision	2	Processing version of data	ontime5	31081.599884272	Sum of GTIs [s]
			ontime6	31081.599884272	Sum of GTIs [s]
			ontime7	31081.599884272	Sum of GTIs [s]
			ontime8	31081.599884272	Sum of GTIs [s]
			l1events	1598658	Number of level 1 events

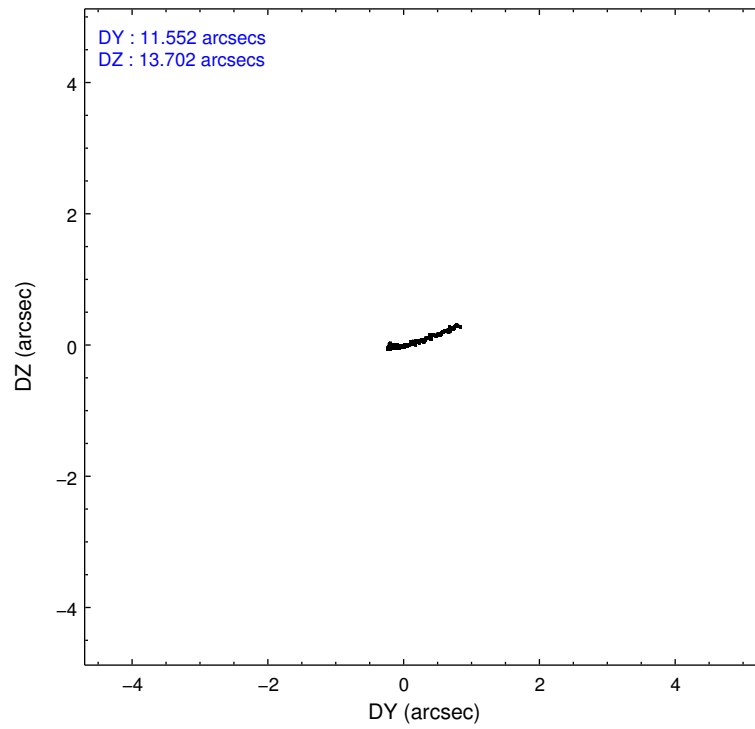
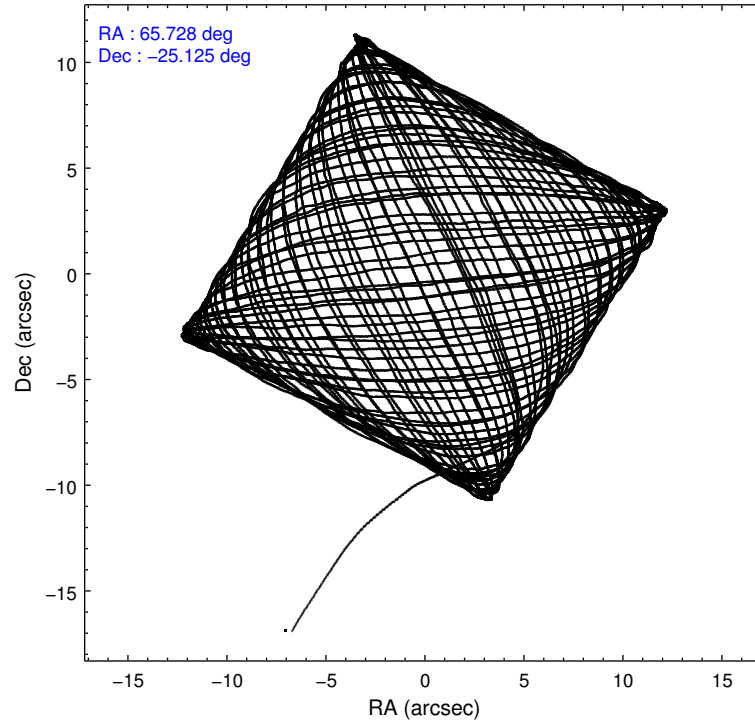
2.1.4 Events

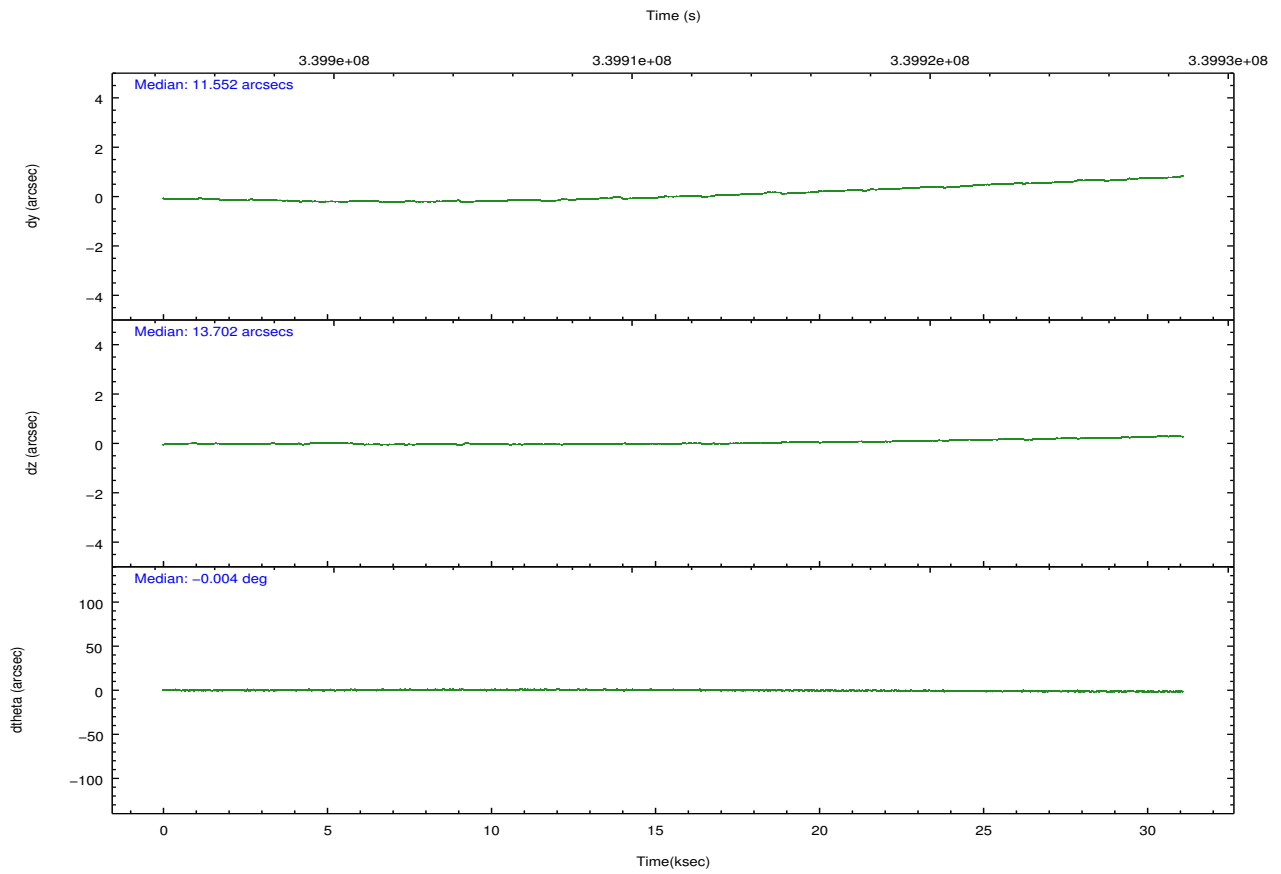
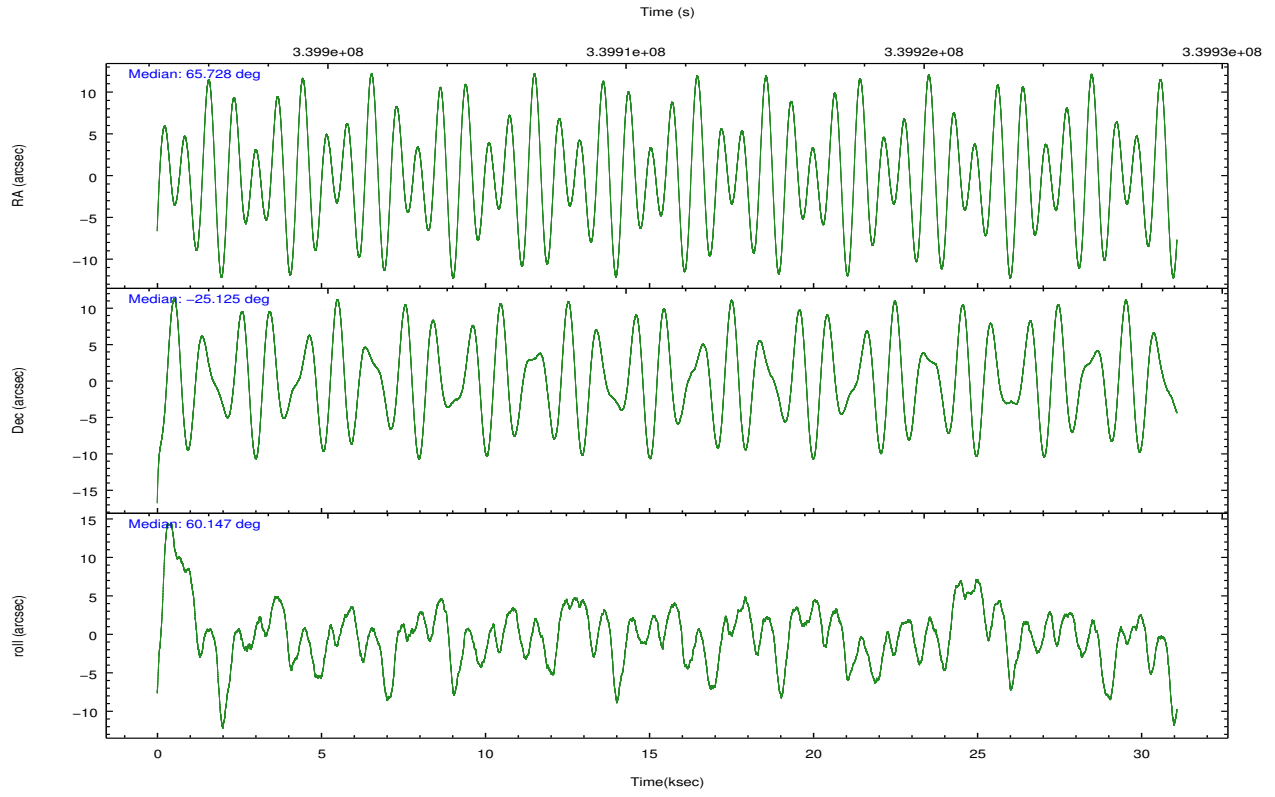
	ccd 2	ccd 3	ccd 5	ccd 6	ccd 7	ccd 8		ccd 2	ccd 3	ccd 5	ccd 6	ccd 7	ccd 8
level 1 events	262271	236929	319218	243468	235121	301651	grade 0 events	9156	7957	23704	9100	11519	20894
rejected events	238677	215170	150062	218871	121916	226410		3%	3%	7%	3%	4%	6%
rejected %	91%	90%	47%	89%	51%	75%	grade 1 events	139	141	668	137	354	267
								0%	0%	0%	0%	0%	0%
							grade 2 events	5678	4843	51763	5524	24476	18055
								2%	2%	16%	2%	10%	5%
							grade 3 events	2487	2549	6805	2628	10708	8499
								0%	1%	2%	1%	4%	2%
							grade 4 events	2543	2448	6734	2584	10520	7802
								0%	1%	2%	1%	4%	2%
							grade 5 events	6927	8335	25262	8506	25367	12836
								2%	3%	7%	3%	10%	4%
							grade 6 events	4082	4252	82698	5137	57617	21075
								1%	1%	25%	2%	24%	6%
							grade 7 events	231259	206404	121584	209852	94560	212223
								88%	87%	38%	86%	40%	70%

2.2 Compared Parameters

Parameter	Planned	Actual	Parameter	Planned	Actual
Instrument	ACIS	ACIS	Obspar format version number	7	7
Detector	ACIS-235678	ACIS-235678	Obspar file type	PREDICTED	ACTUAL
Grating	NONE	NONE	Obspar update status	NONE	UPDATED
Data mode	VFAINT	VFAINT	CCD I0 on	N	N
Observation mode	POINTING	POINTING	CCD I1 on	N	N
[deg] Pointing RA	65.728243	65.7277413425505	CCD I2 on	O2	Y
[deg] Pointing Dec	-25.151992	-25.12466123114384	CCD I3 on	O3	Y
[deg] Pointing Roll	60.000141	60.15655324351841	CCD S0 on	N	N
[mm] SIM focus pos	-0.684267	-0.6828225247311905	CCD S1 on	O1	Y
[mm] SIM defocus	0	0.001444936568705701	CCD S2 on	O5	Y
[mm] SIM translation stage pos	-190.132523	-190.1400660498719	CCD S3 on	Y	Y
[mm] SIM translation stage offset	0	0.00754346686406393	CCD S4 on	O4	Y
[s] Observation start time (MET)	339896015.184000	339894659.75176	CCD S5 on	N	N
Observation start date	2008-10-08T23:32:30	2008-10-08T23:10:59	Number of optional ACIS chips dropped	0	0
[s] Observation end time (MET)	339926915.184000	339927278.84087	On-chip summing requested	N	N
Observation end date	2008-10-09T08:07:30	2008-10-09T08:14:38	Subarray requested	NONE	NONE
Read mode	TIMED	TIMED	Alternating exposures requested	N	N
			[s] Primary exposure time	0.000000	3.2

2.3 Aspect



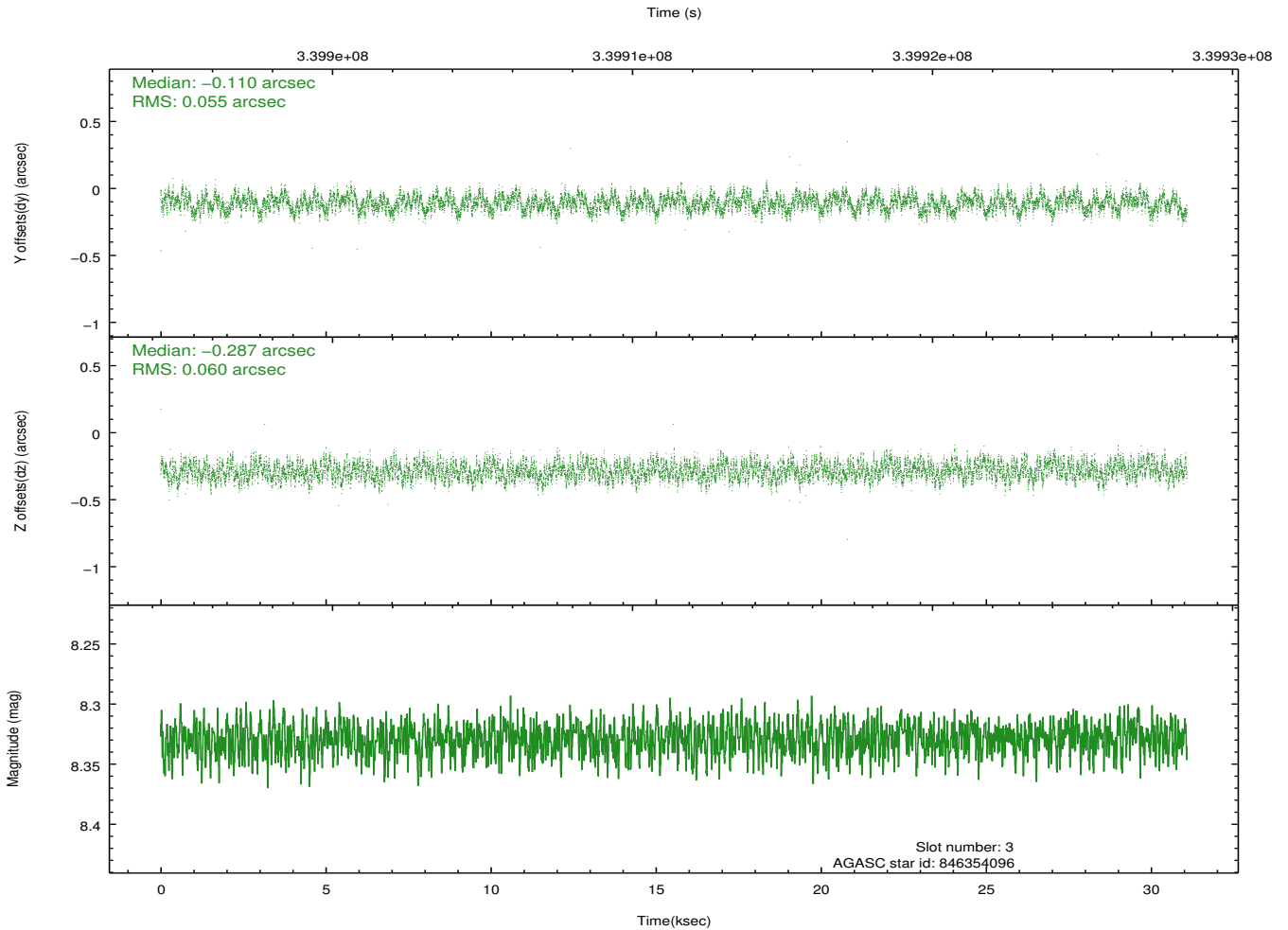
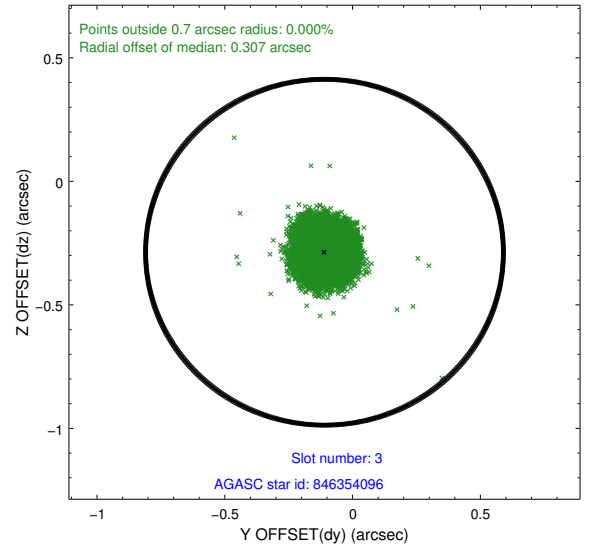
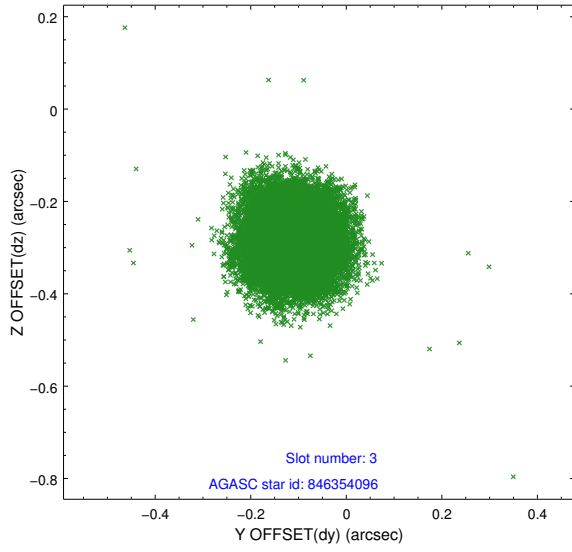


Slot Statistics

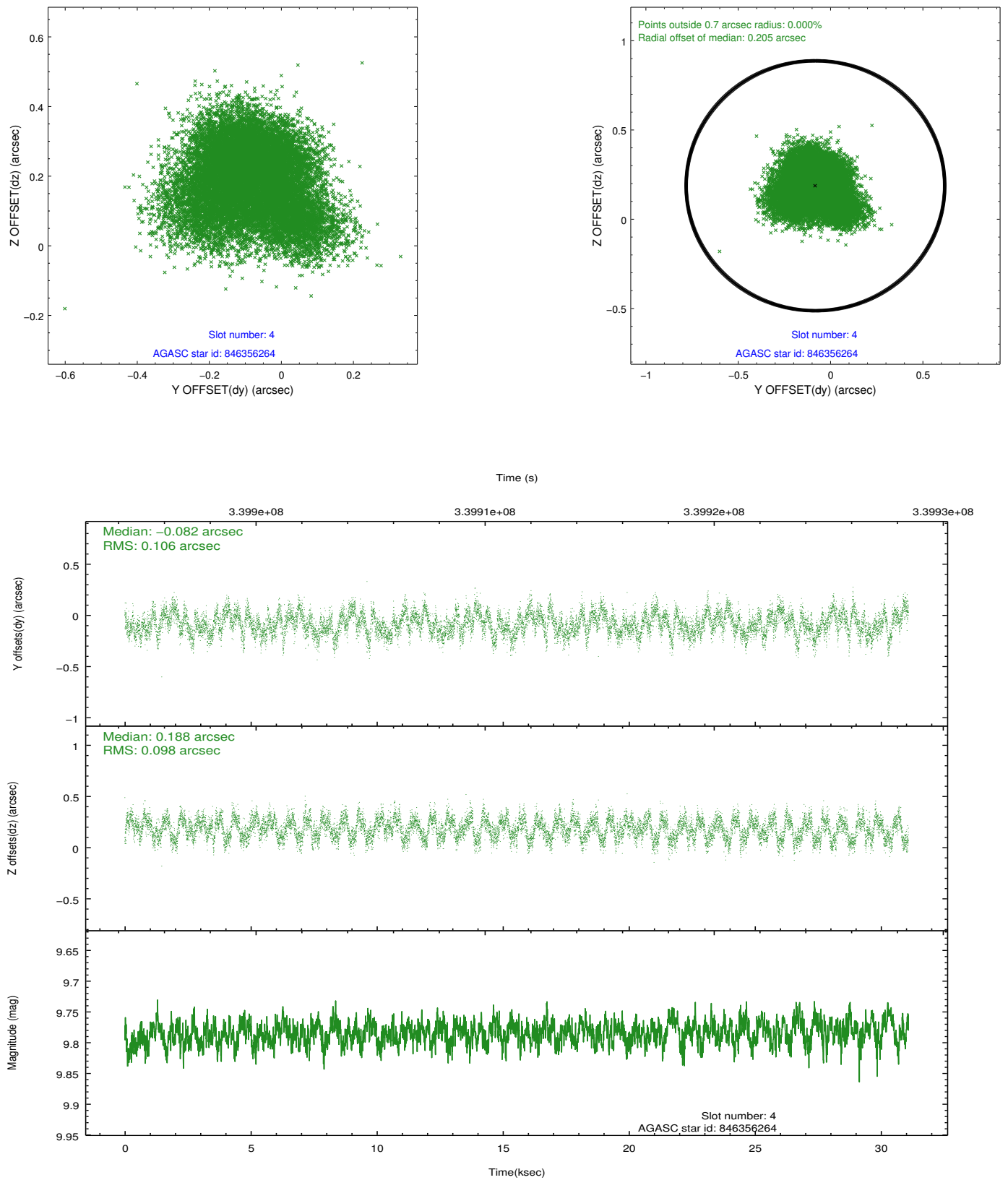
slot	status	id	mag	n_pts	med_dy	med_dz	dr1	dr2	ra	dec	mean_y	mean_z
0	FID	ACIS-S-2	6.88	7582	-0.032	-0.027	0.007	0.011	0.000000	0.000000	-764.59	-1735.12
1	FID	ACIS-S-4	6.98	7582	0.119	0.023	0.007	0.013	0.000000	0.000000	2148.82	173.33
2	FID	ACIS-S-5	7.00	7582	-0.118	0.012	0.007	0.014	0.000000	0.000000	-1817.42	167.09
3	GUIDE	846354096	8.33	15158	-0.110	-0.287	0.088	0.134	65.187240	-24.726497	438.98	2296.09
4	GUIDE	846356264	9.78	15106	-0.082	0.188	0.155	0.246	66.399632	-24.900813	1875.05	-1448.86
5	GUIDE	846742672	9.74	15142	0.127	0.180	0.137	0.227	65.915695	-25.952448	-2191.71	-1966.74
6	GUIDE	846745608	7.91	15152	0.068	0.097	0.091	0.147	65.834011	-25.395004	-587.28	-736.83
7	GUIDE	846353752	9.43	15083	-0.002	-0.175	0.106	0.164	65.293032	-24.539160	1196.09	2336.07

2.4 Star Slots

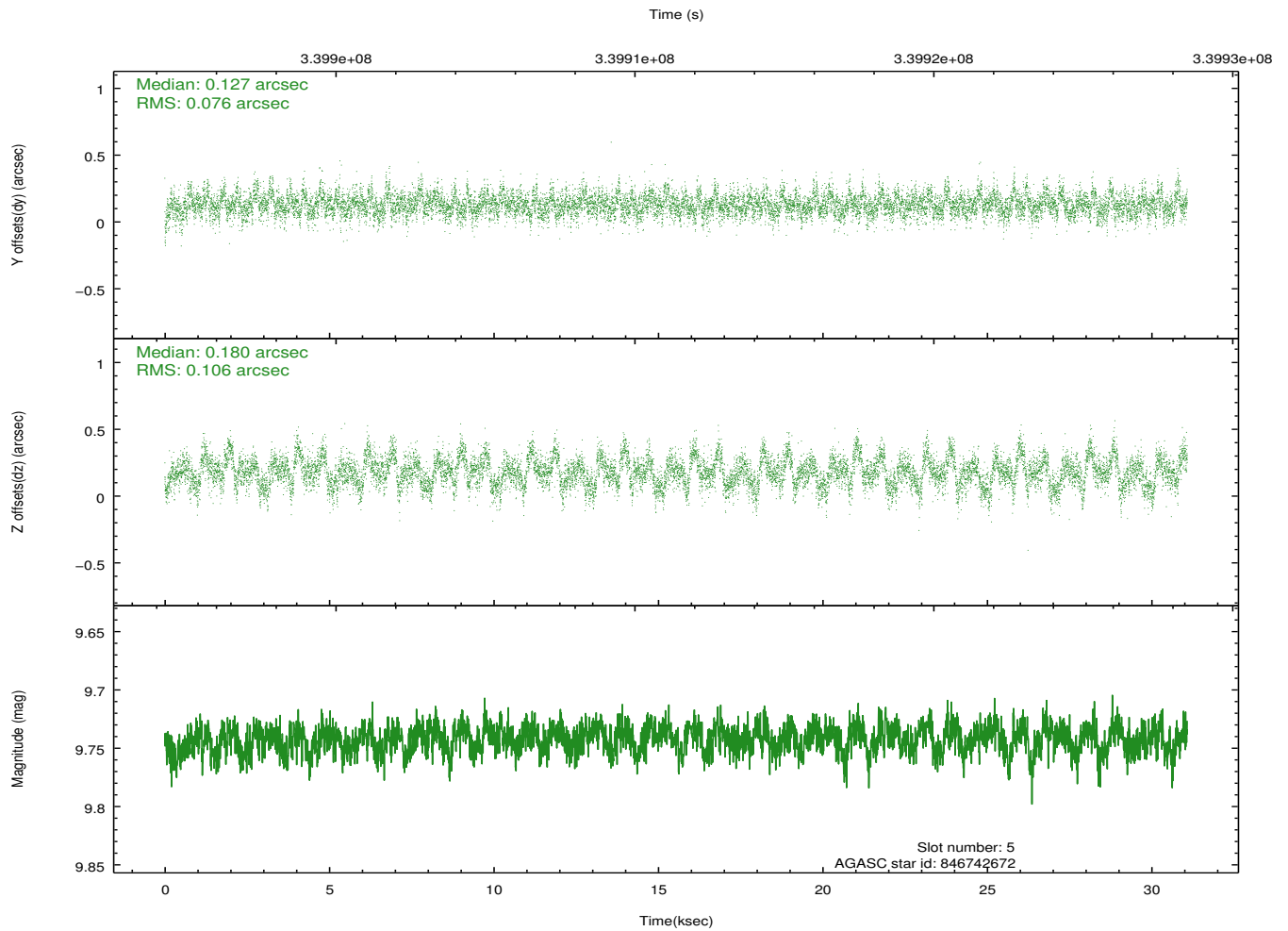
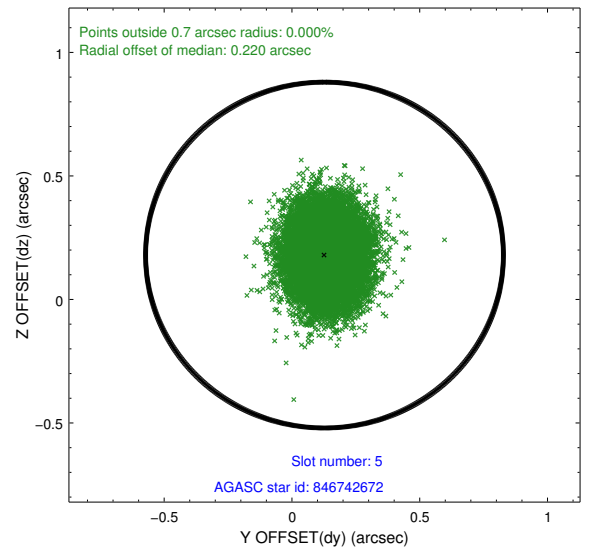
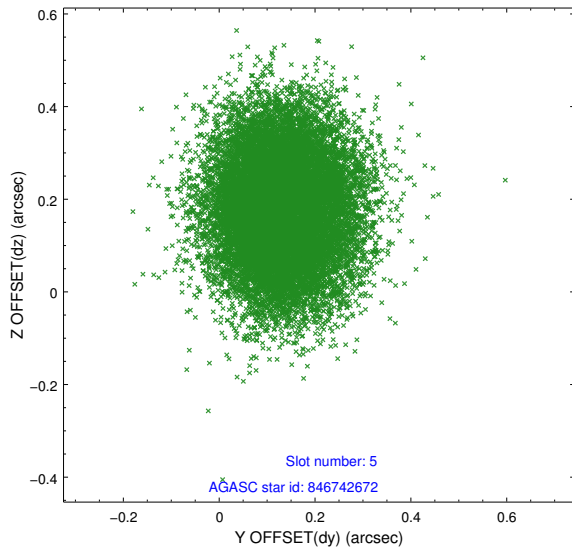
2.4.1 Slot 3



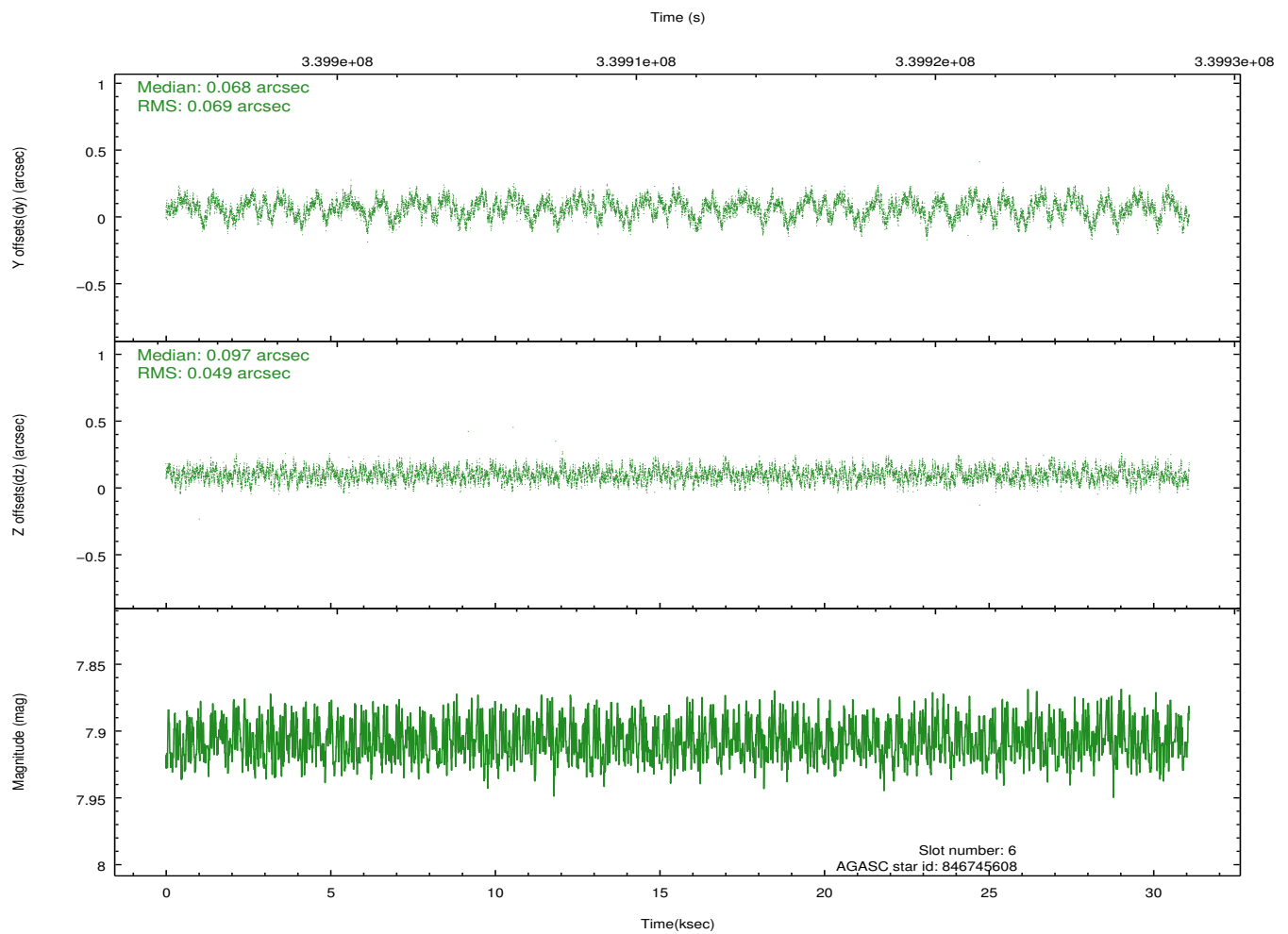
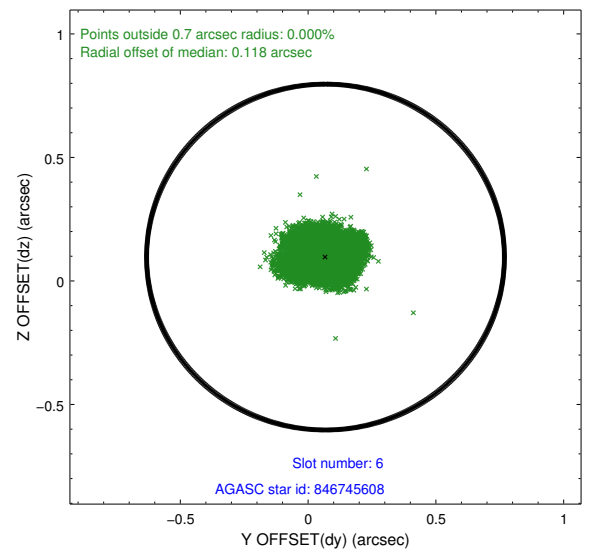
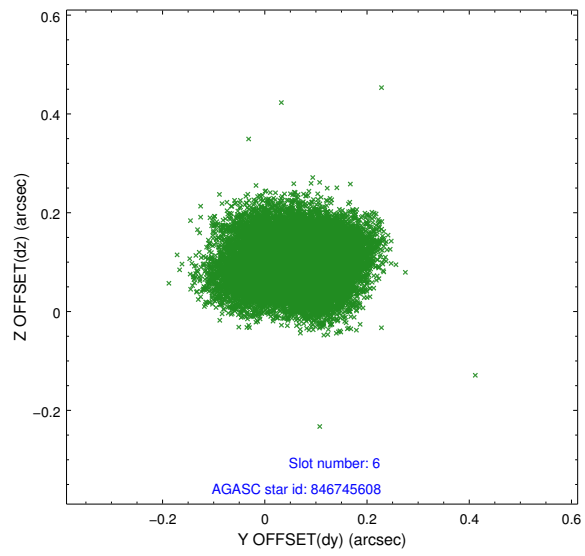
2.4.2 Slot 4



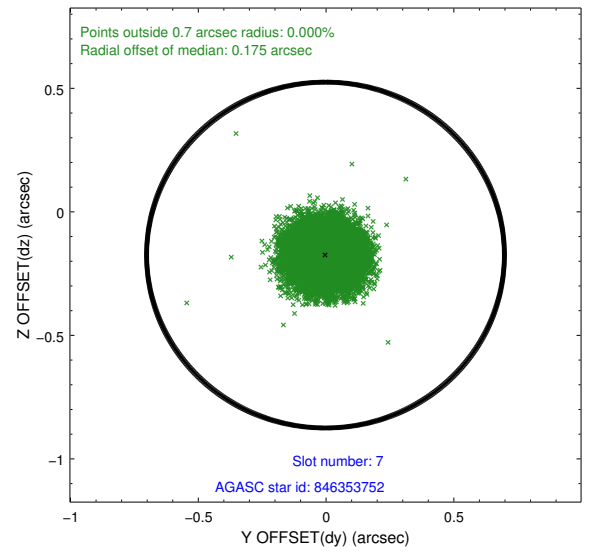
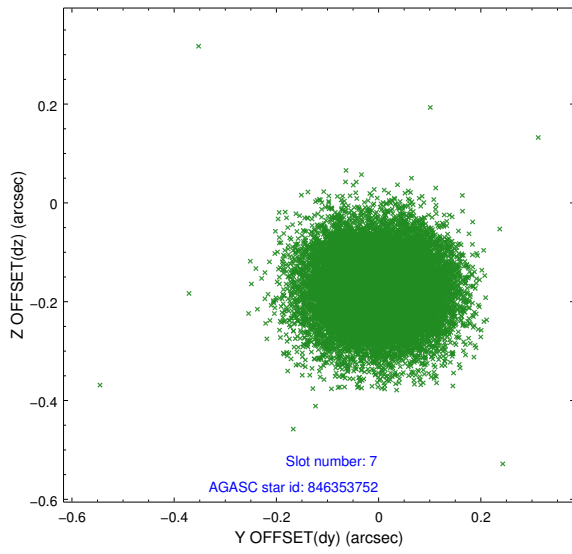
2.4.3 Slot 5



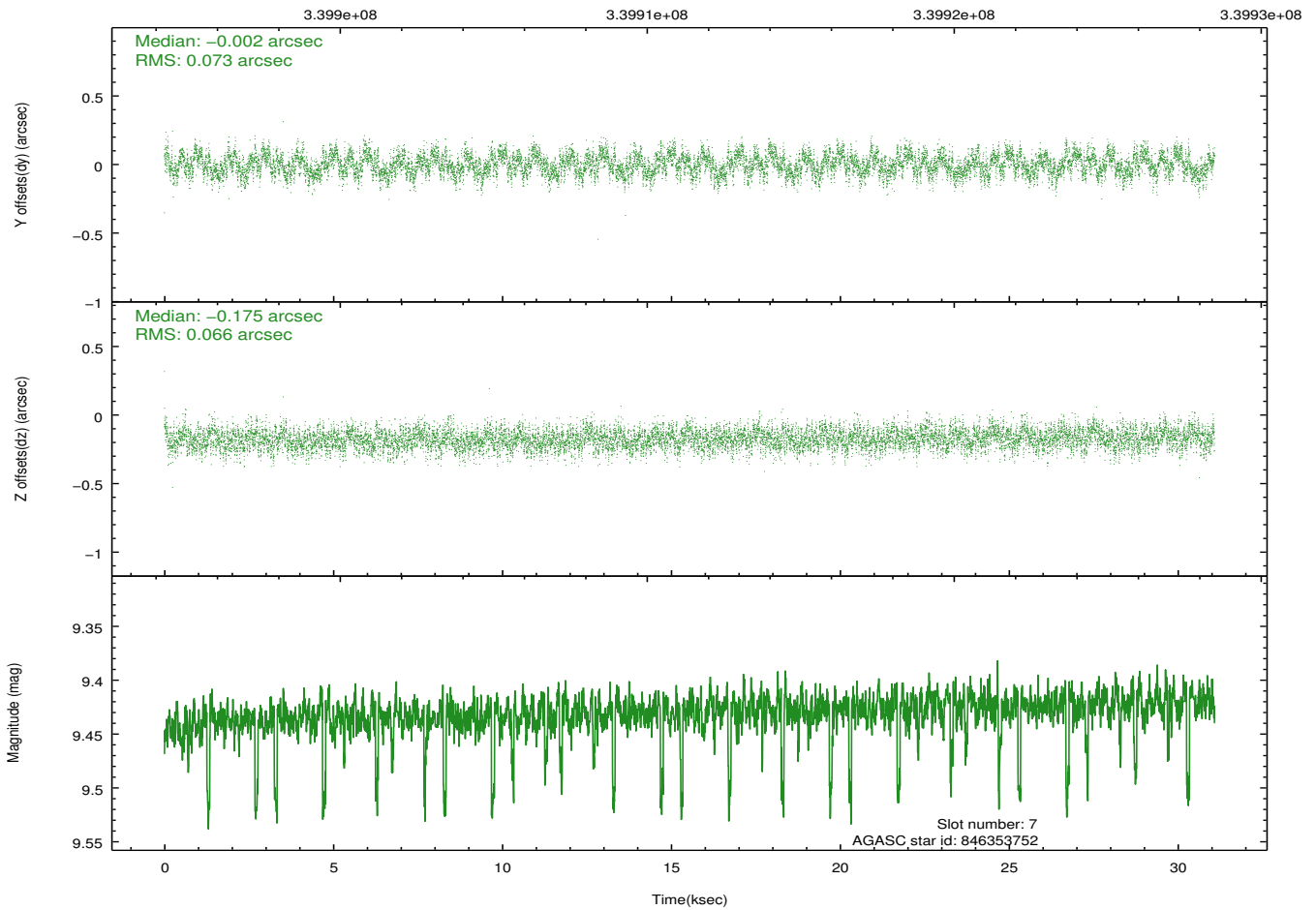
2.4.4 Slot 6



2.4.5 Slot 7

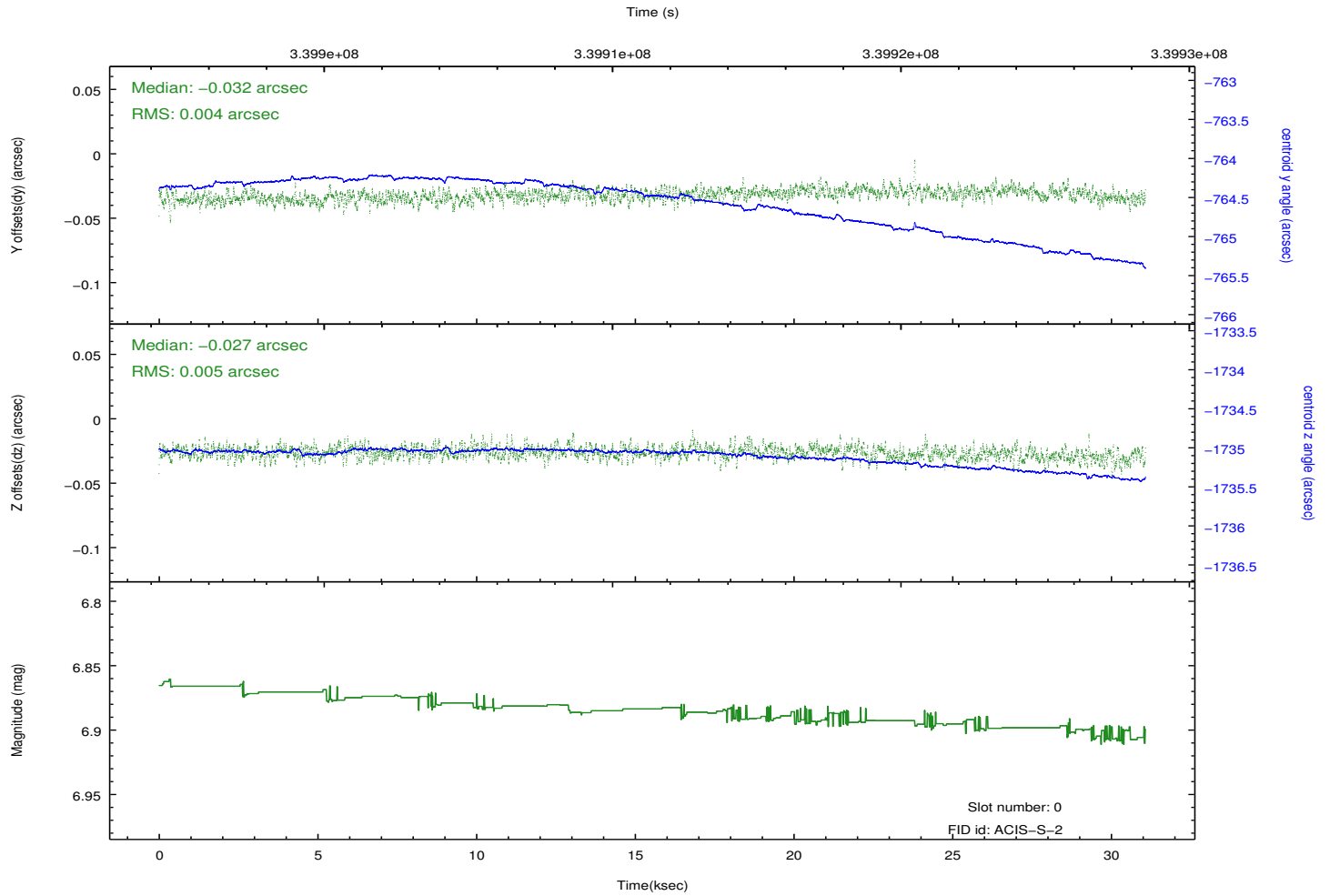
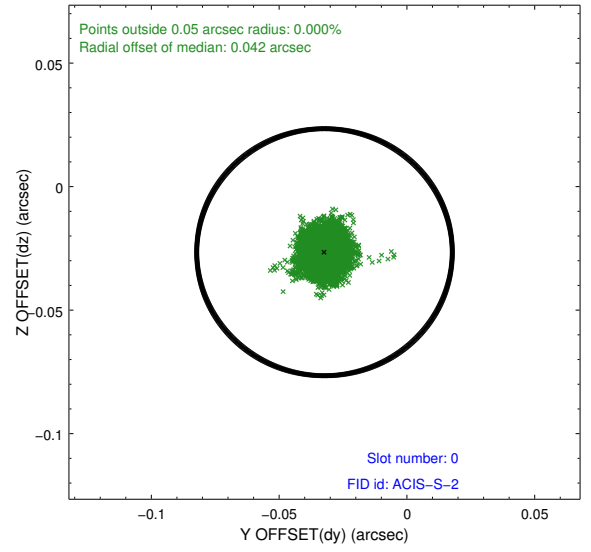
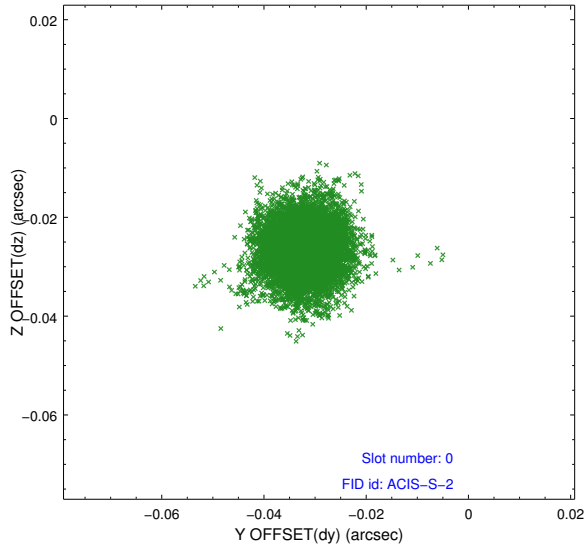


Time (s)

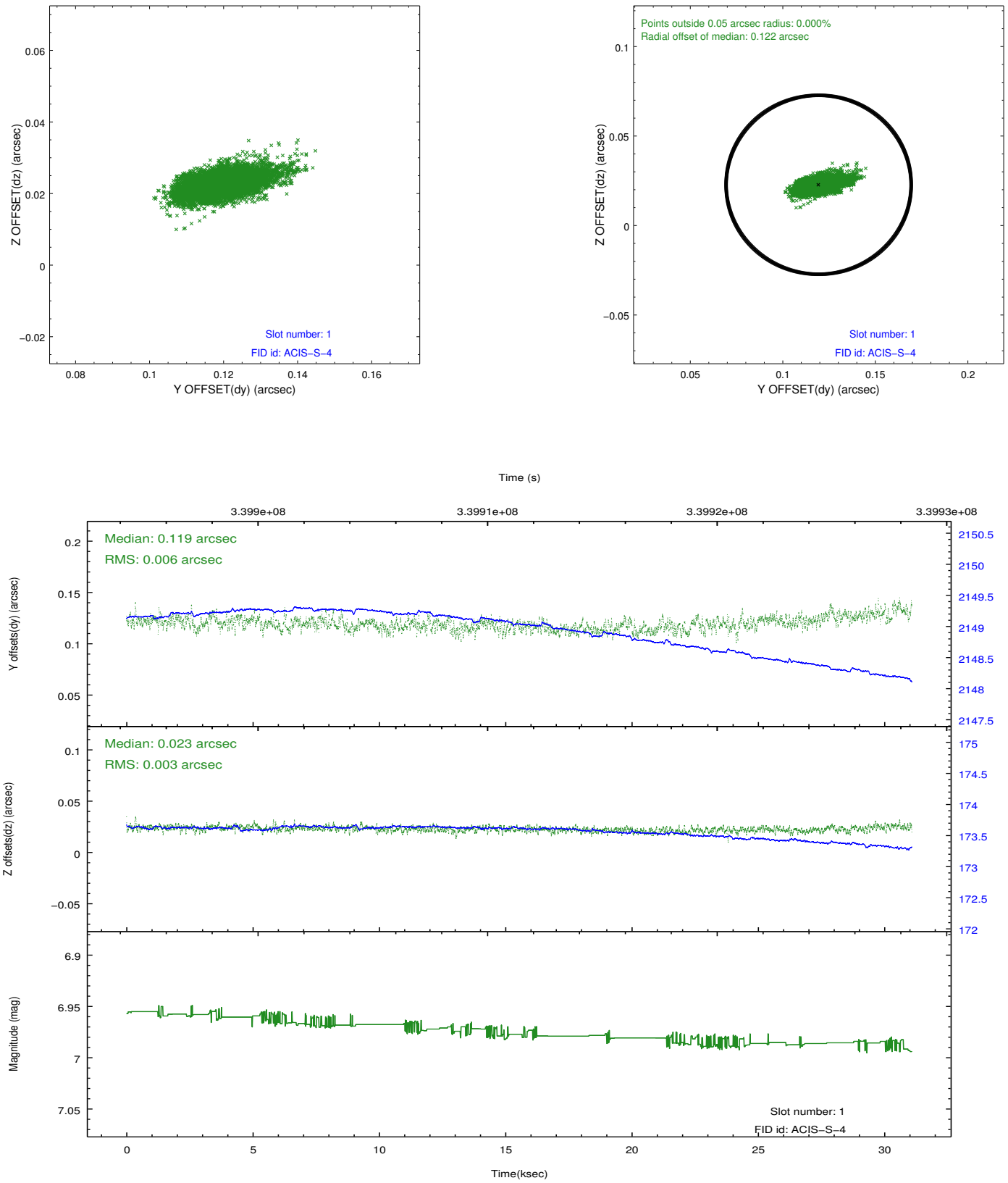


2.5 FID Slots

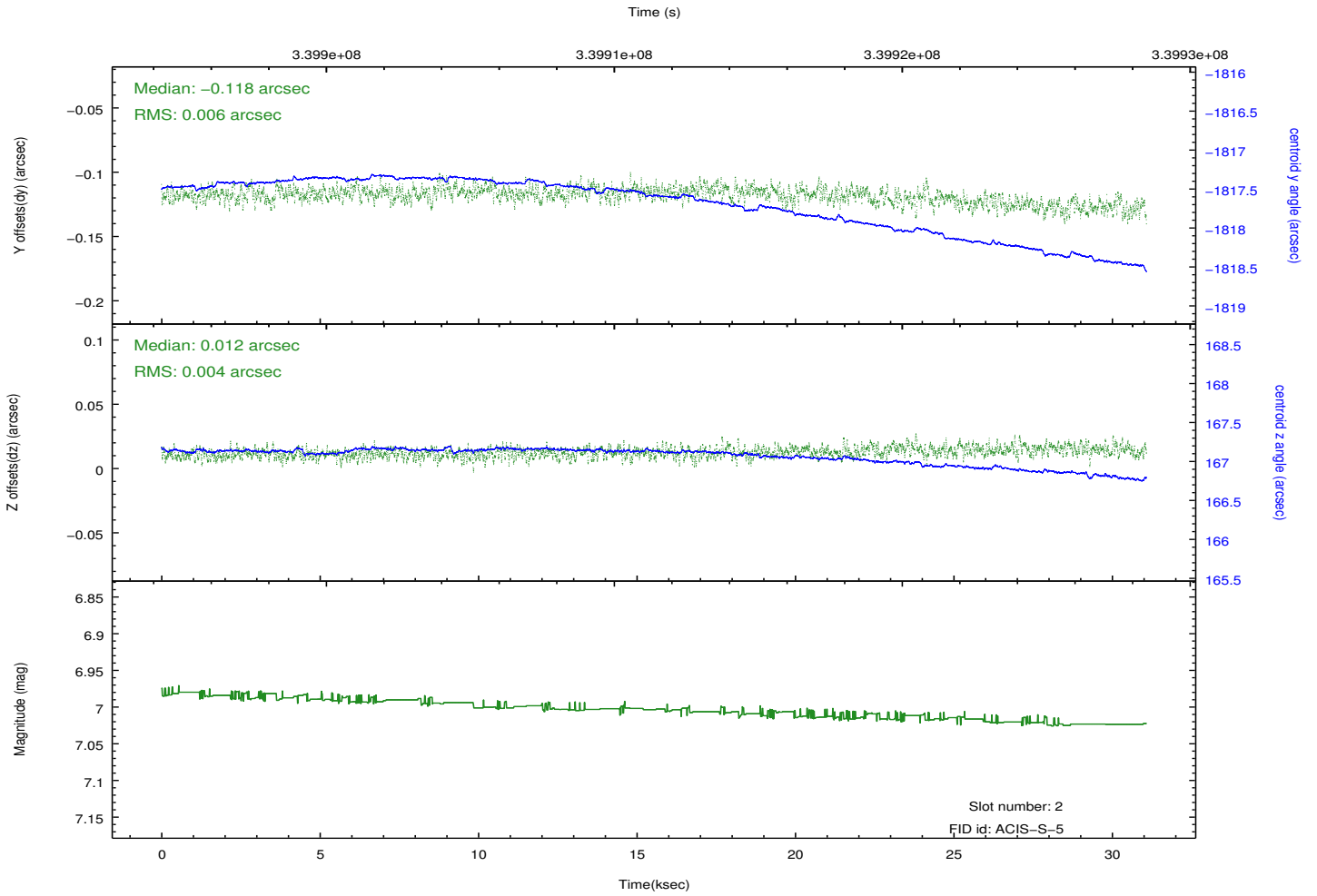
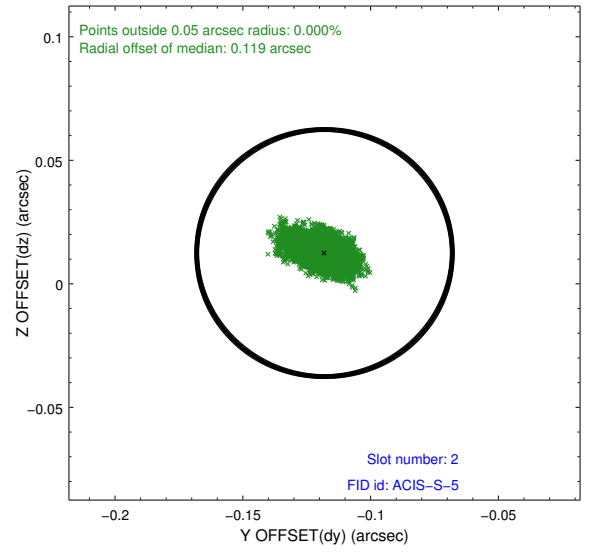
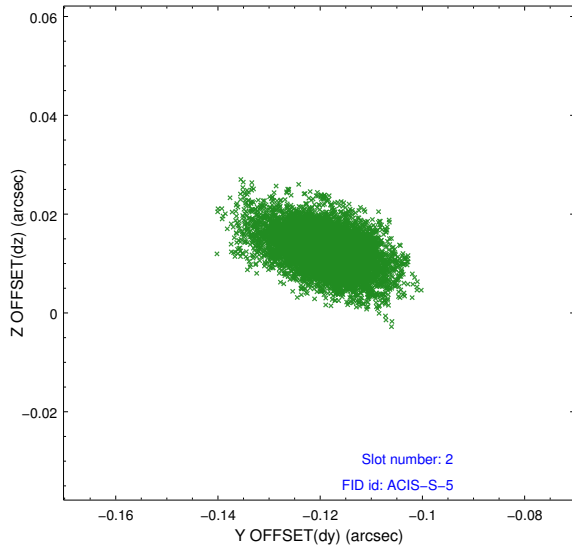
2.5.1 Slot 0



2.5.2 Slot 1



2.5.3 Slot 2



A Summary

A.1 Status

V&V Scientist	Jen Lauer
V&V Date (YYYY-MM-DD)	2012.05.30
V&V Edition	1
V&V Disposition and Status	OK
V&V Charge Time	31.0815998

A.2 Comments