

V&V Reference Report

L2 ASCDS Version : 8.4.4

Observation 10785 - L2 Version 2
Chandra X-Ray Center

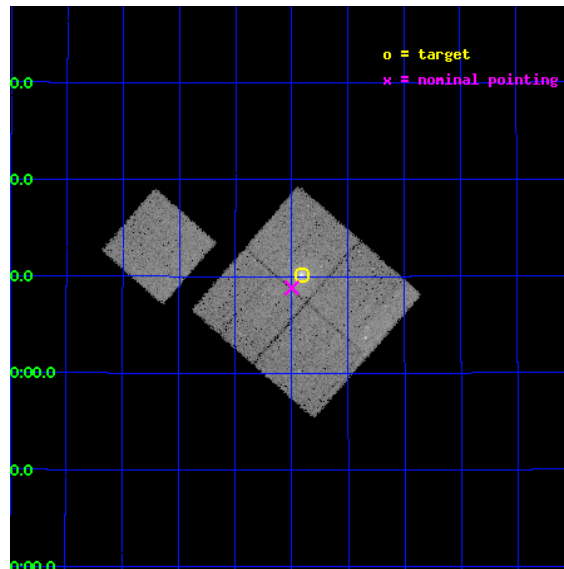
L2 Processing Date : May 22 2012

Contents

1	Front	2
2	OBI	3
2.1	OBI	3
2.1.1	Images	3
2.1.2	Bias	3
2.1.3	Parameters	4
2.1.4	Events	4
2.2	Compared Parameters	5
2.3	Aspect	6
2.4	Star Slots	9
2.4.1	Slot 3	9
2.4.2	Slot 4	10
2.4.3	Slot 5	11
2.4.4	Slot 6	12
2.4.5	Slot 7	13
2.5	FID Slots	14
2.5.1	Slot 0	14
2.5.2	Slot 1	15
2.5.3	Slot 2	16
A	Summary	17
A.1	Status	17
A.2	Comments	17

1 Front

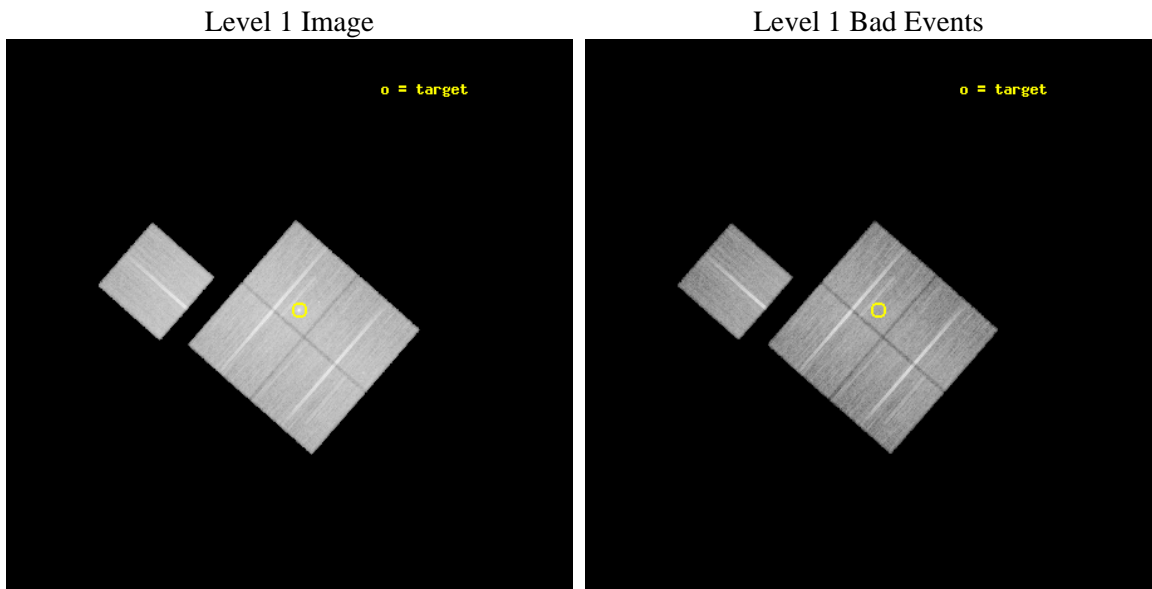
seq_num	800716	Sequence number
obs_id	10785	Observation id
title	Probing Dark Energy with Relaxed Galaxy Clusters	Proposal title
observer	Prof. Steven Allen	Principal investigator
object	MACS1621	Source name
dtcycle	0	
cycle	P	events from which exps? Prim/Second/Both
ra_targ	245.353333	Observer's specified target RA [deg]
dec_targ	38.169167	Observer's specified target Dec [deg]
ra_nom	245.37476458006	Nominal RA [deg]
dec_nom	38.147113274392	Nominal Dec [deg]
roll_nom	311.1954646051	Nominal Roll [deg]
revision	2	Processing version of data
ontime	30144.400231838	Sum of GTIs [s]
livetime	29750.541450825	Livetime [s]
ontime0	30141.259271502	Sum of GTIs [s]
ontime1	30138.118271291	Sum of GTIs [s]
ontime2	30138.118261218	Sum of GTIs [s]
ontime3	30144.400231838	Sum of GTIs [s]
ontime6	30141.259241521	Sum of GTIs [s]
l2events	112216	Number of level 2 events



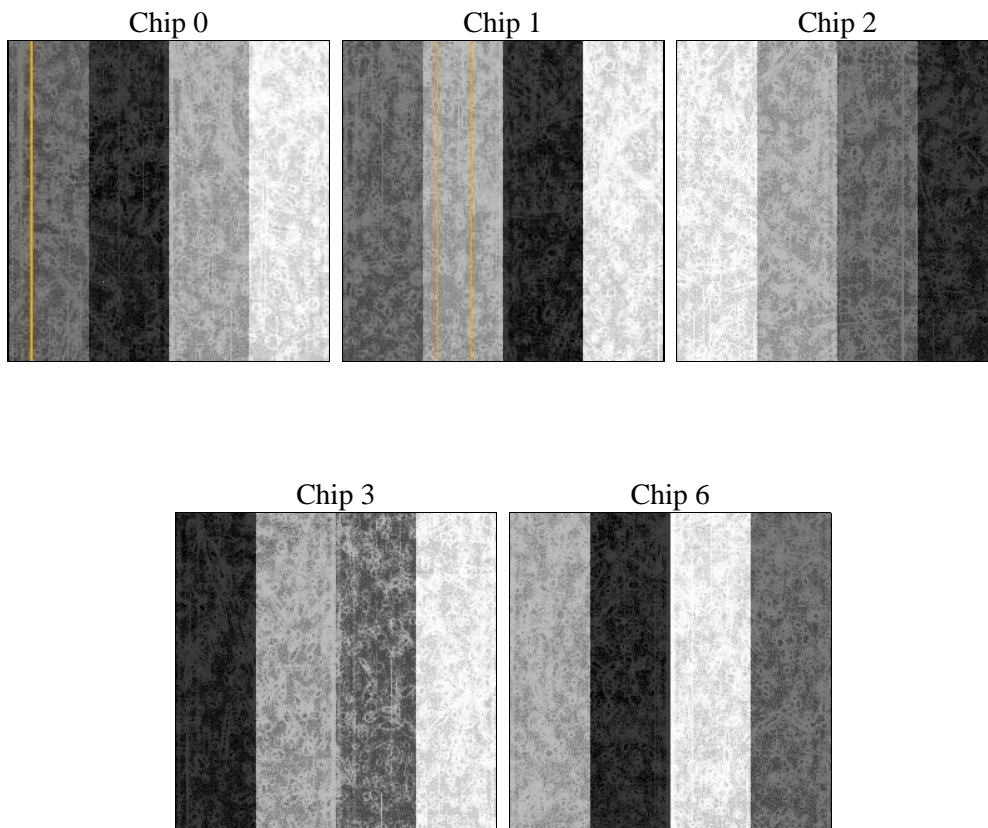
2 OBI

2.1 OBI

2.1.1 Images



2.1.2 Bias



2.1.3 Parameters

obi_num	0	Obi number	sched_exp_time	30000.000000	[s] Scheduled observation exposure time
ascdsver	8.4.4	Processing system revision	ontime	30144.400231838	Sum of GTIs [s]
caldsver	4.4.9	 	ontime0	30141.259271502	Sum of GTIs [s]
date	2012-05-22T22:55:29	Date and time of file creation	ontime1	30138.118271291	Sum of GTIs [s]
revision	2	Processing version of data	ontime2	30138.118261218	Sum of GTIs [s]
			ontime3	30144.400231838	Sum of GTIs [s]
			ontime6	30141.259241521	Sum of GTIs [s]
			l1events	1255494	Number of level 1 events

2.1.4 Events

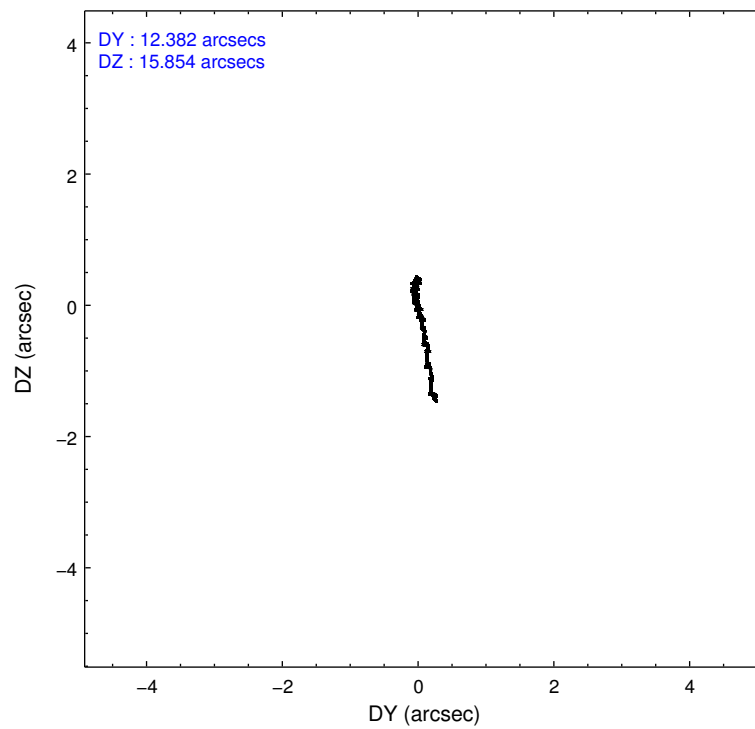
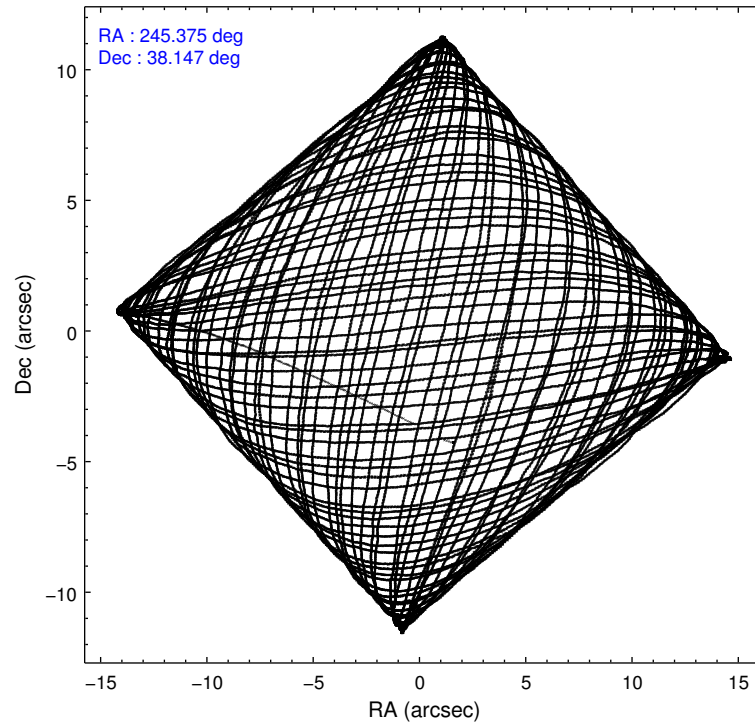
	ccd 0	ccd 1	ccd 2	ccd 3	ccd 6
level 1 events	238213	240517	263078	260046	253640
rejected events	212635	211758	237786	230667	228093
rejected %	89%	88%	90%	88%	89%

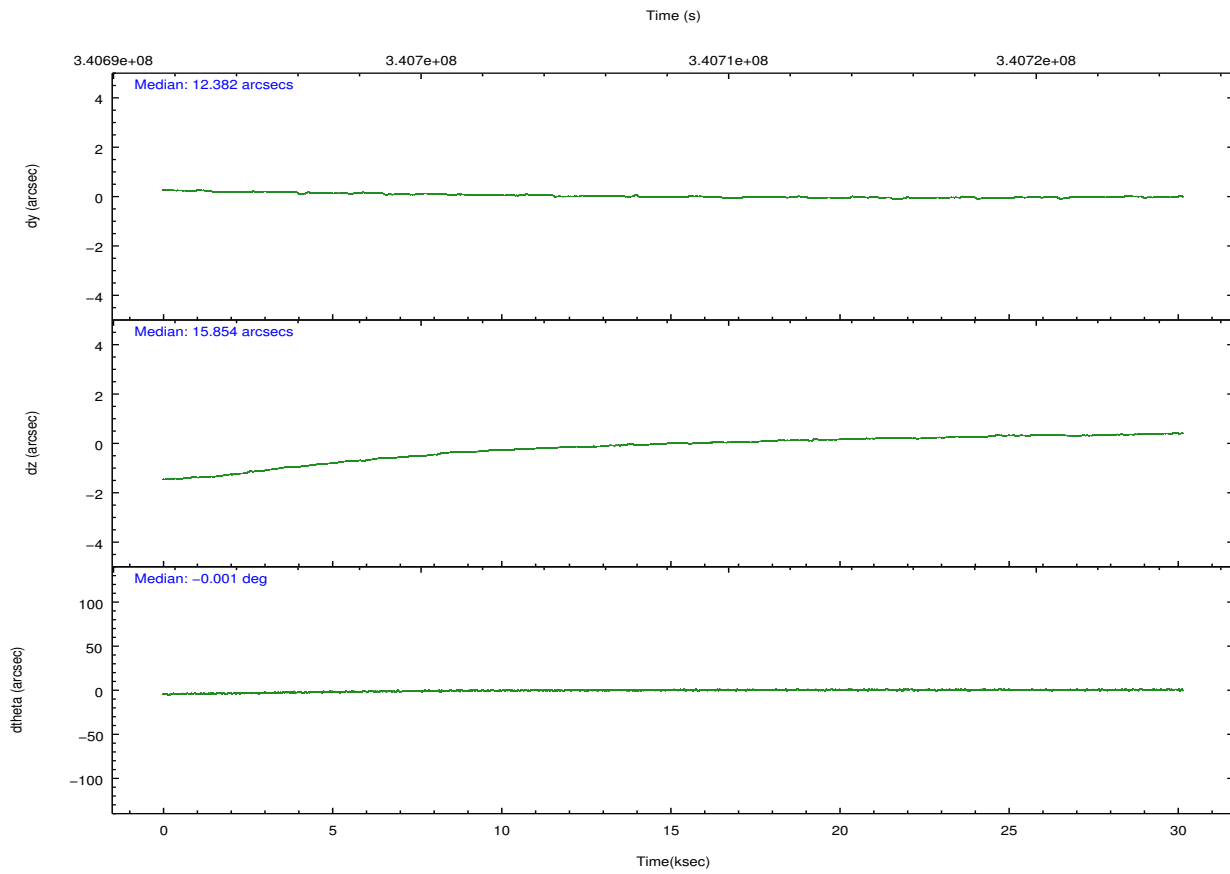
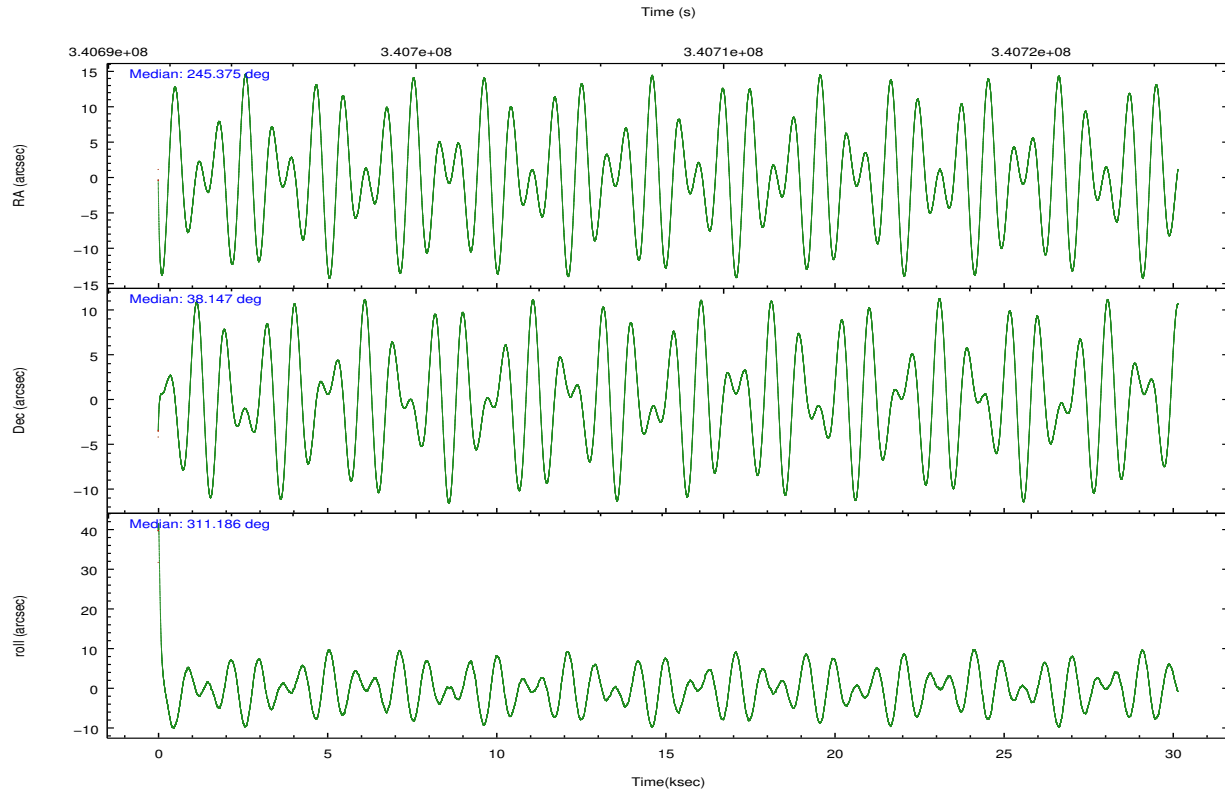
	ccd 0	ccd 1	ccd 2	ccd 3	ccd 6
grade 0 events	9181	10688	9430	13002	9074
	3%	4%	3%	4%	3%
grade 1 events	147	125	126	188	137
	0%	0%	0%	0%	0%
grade 2 events	6374	6646	6075	5850	5753
	2%	2%	2%	2%	2%
grade 3 events	2883	3022	2749	3040	2738
	1%	1%	1%	1%	1%
grade 4 events	2681	2981	2611	2934	2786
	1%	1%	0%	1%	1%
grade 5 events	8987	10061	8488	10665	10275
	3%	4%	3%	4%	4%
grade 6 events	4856	5885	4831	4956	5615
	2%	2%	1%	1%	2%
grade 7 events	203104	201109	228768	219411	217262
	85%	83%	86%	84%	85%

2.2 Compared Parameters

Parameter	Planned	Actual	Parameter	Planned	Actual
Instrument	ACIS	ACIS	Obspar format version number	7	7
Detector	ACIS-01236	ACIS-01236	Obspar file type	PREDICTED	ACTUAL
Grating	NONE	NONE	Obspar update status	NONE	UPDATED
Data mode	VFAINT	VFAINT	CCD I0 on	Y	Y
Observation mode	POINTING	POINTING	CCD I1 on	Y	Y
[deg] Pointing RA	245.341634	245.3747645800626	CCD I2 on	Y	Y
[deg] Pointing Dec	38.155868	38.14711327439242	CCD I3 on	Y	Y
[deg] Pointing Roll	311.007227	311.1954646050957	CCD S0 on	N	N
[mm] SIM focus pos	-0.782348	-0.7809083437167272	CCD S1 on	N	N
[mm] SIM defocus	0	0.001439871863259334	CCD S2 on	O1	Y
[mm] SIM translation stage pos	-229.442463	-229.4438428438578	CCD S3 on	N	N
[mm] SIM translation stage offset	-4.15	-4.148610159071865	CCD S4 on	N	N
[s] Observation start time (MET)	340693259.184000	340692043.67854	CCD S5 on	N	N
Observation start date	2008-10-18T04:59:54	2008-10-18T04:40:43	Number of optional ACIS chips dropped	0	0
[s] Observation end time (MET)	340723259.184000	340724396.78014	On-chip summing requested	N	N
Observation end date	2008-10-18T13:19:54	2008-10-18T13:39:56	Subarray requested	NONE	NONE
Read mode	TIMED	TIMED	Alternating exposures requested	N	N
			[s] Primary exposure time	0.000000	3.1

2.3 Aspect



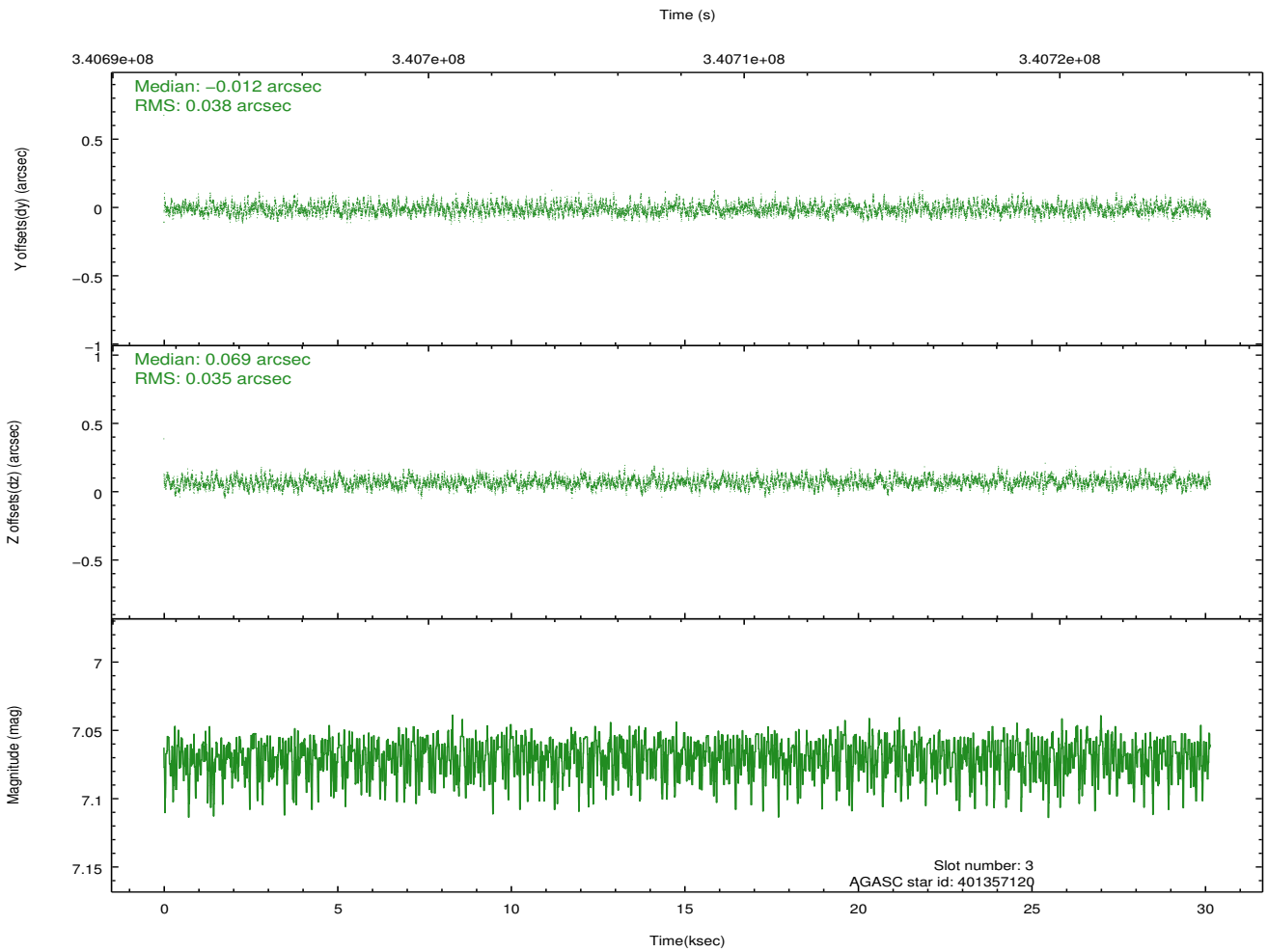
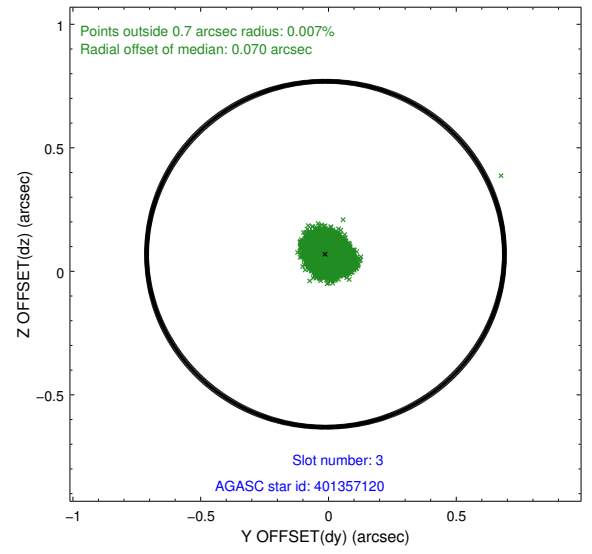
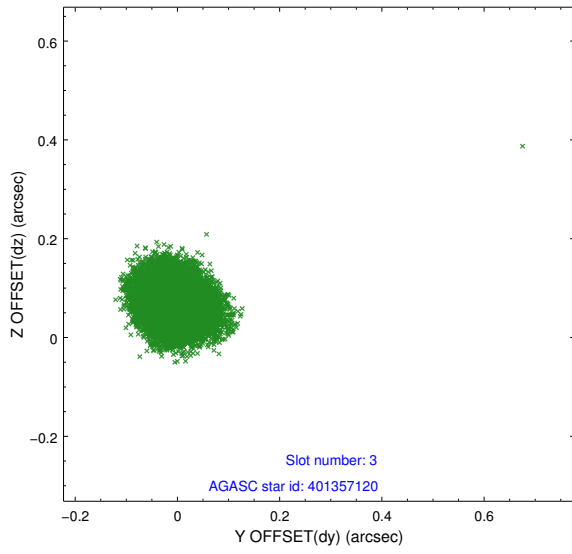


Slot Statistics

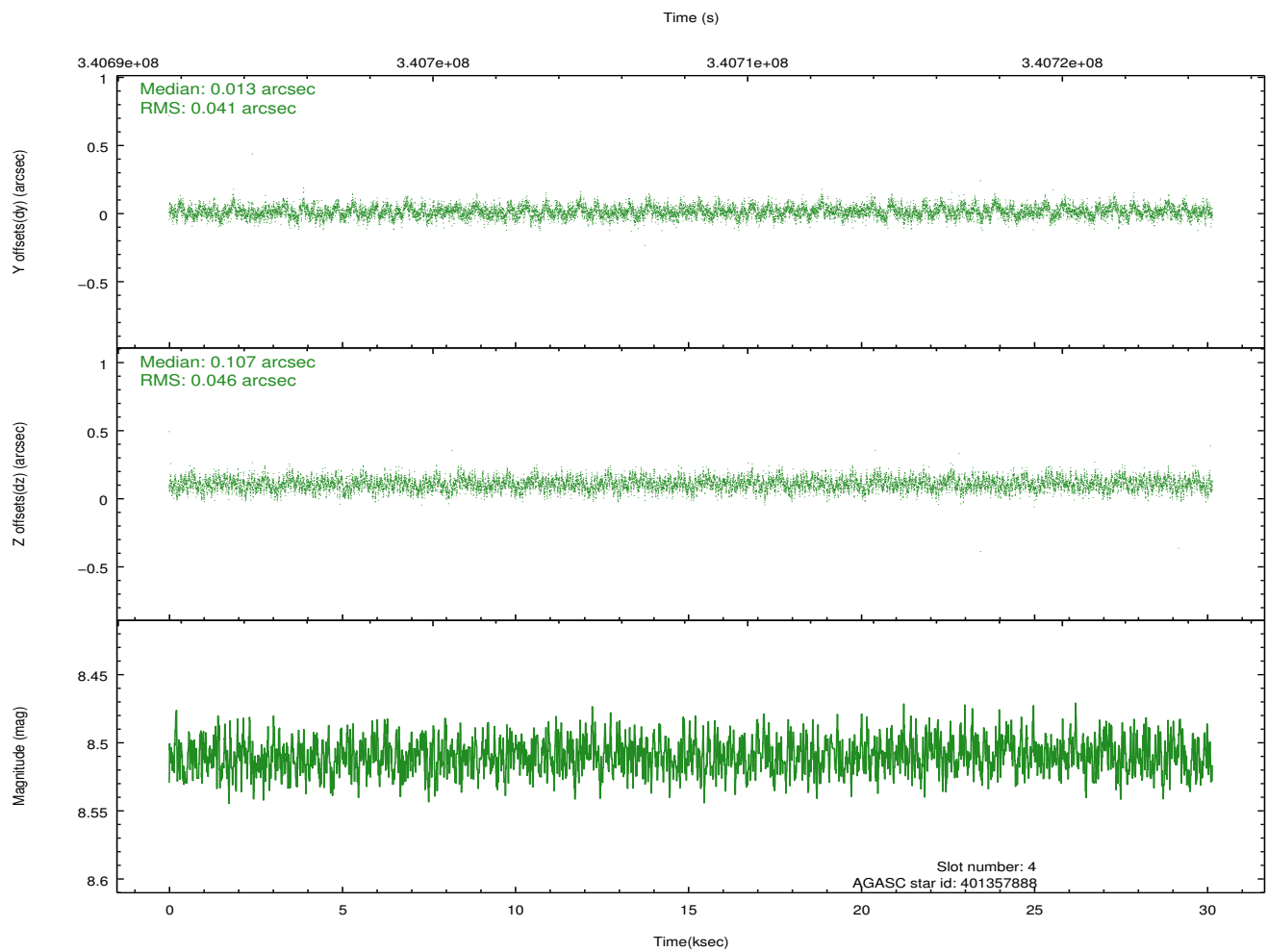
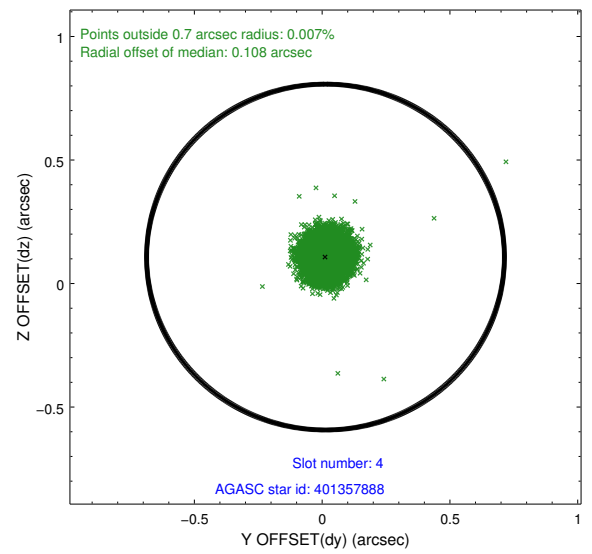
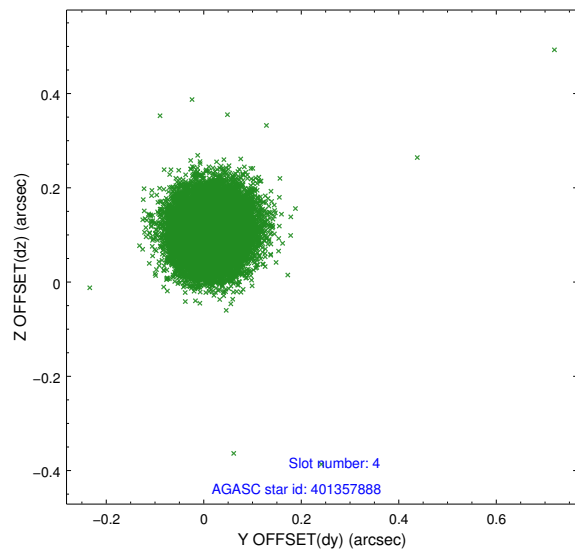
slot	status	id	mag	n_pts	med_dy	med_dz	dr1	dr2	ra	dec	mean_y	mean_z
0	FID	ACIS-I-1	7.00	7354	0.093	-0.041	0.010	0.038	0.000000	0.000000	927.12	-924.45
1	FID	ACIS-I-5	7.00	7354	-0.205	0.100	0.011	0.032	0.000000	0.000000	-1821.23	973.15
2	FID	ACIS-I-6	7.00	7354	0.020	0.015	0.015	0.035	0.000000	0.000000	392.54	1617.64
3	GUIDE	401357120	7.07	14708	-0.012	0.069	0.055	0.086	244.752378	37.765715	-43.59	-2183.58
4	GUIDE	401357888	8.51	14701	0.013	0.107	0.065	0.105	244.567474	38.275306	-1766.44	-1362.94
5	GUIDE	401357920	8.40	14703	0.060	0.060	0.059	0.095	245.268524	37.658915	1213.75	-1330.60
6	GUIDE	401358992	8.94	14700	0.013	0.003	0.084	0.140	245.392985	38.938928	-2032.79	1958.27
7	GUIDE	401356544	7.25	14700	-0.077	-0.240	0.059	0.093	246.068366	38.478292	461.48	2312.70

2.4 Star Slots

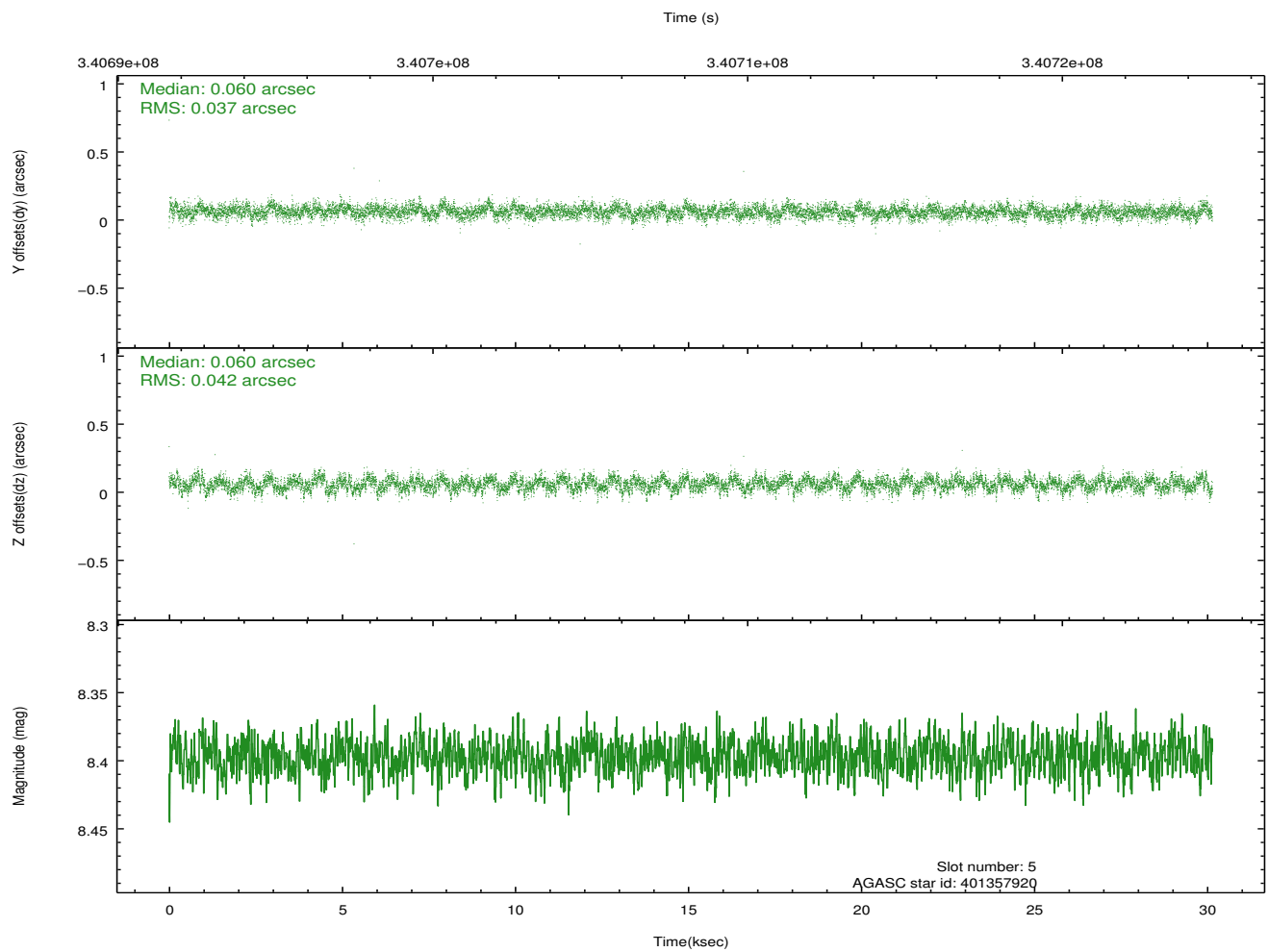
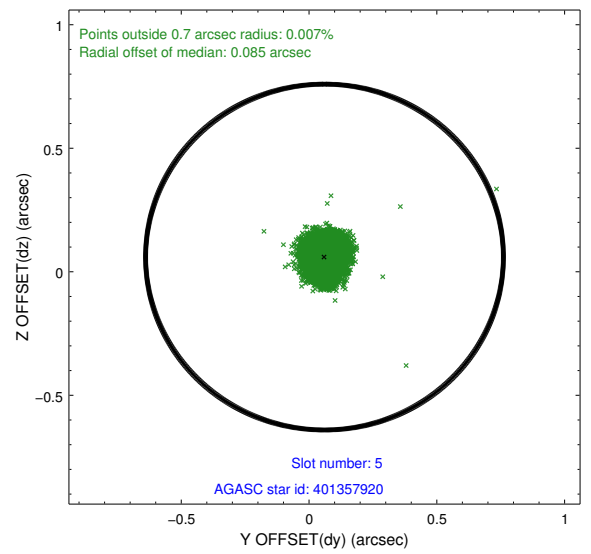
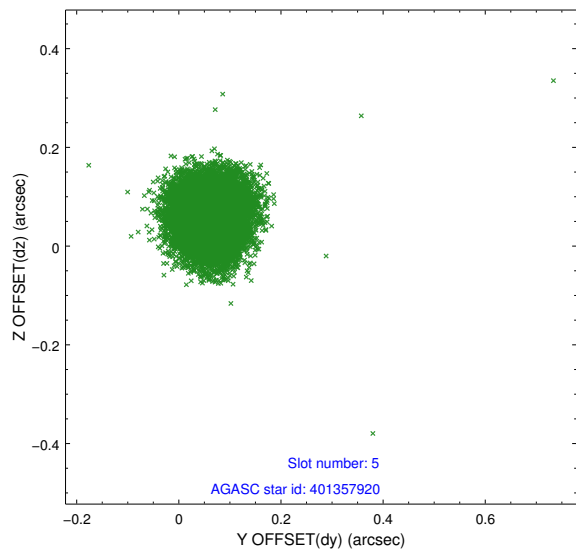
2.4.1 Slot 3



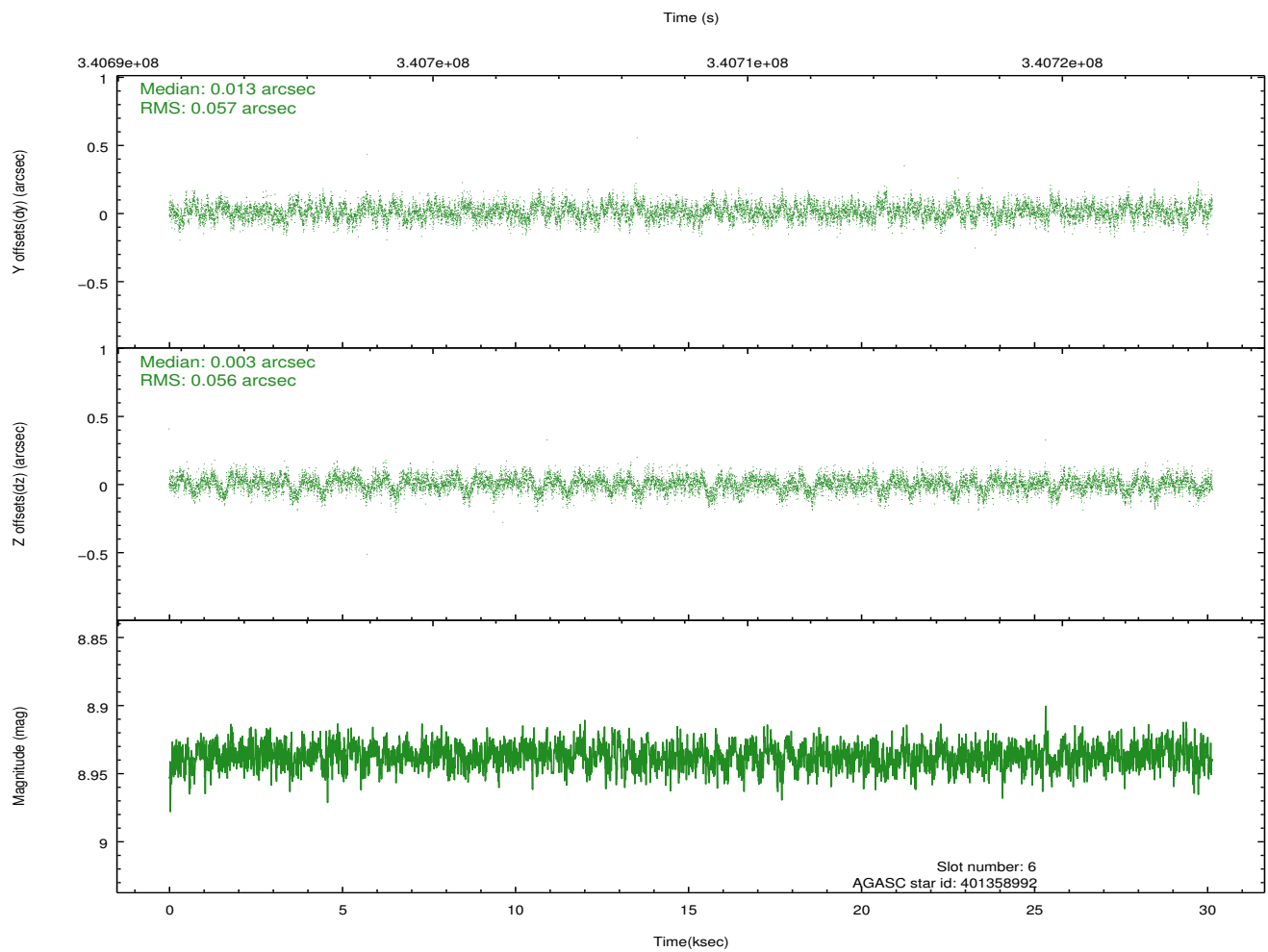
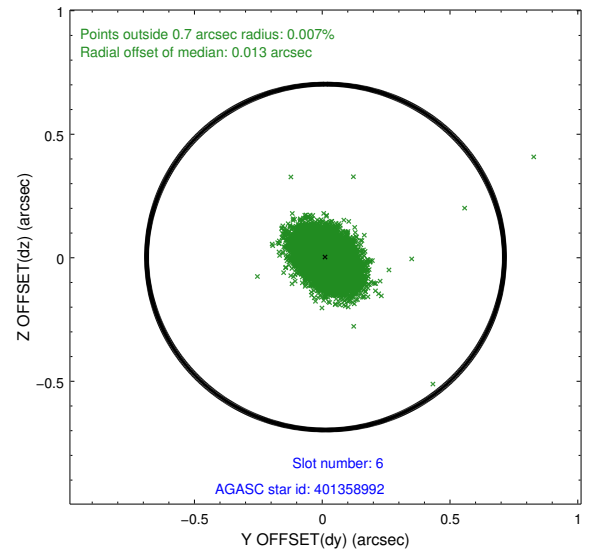
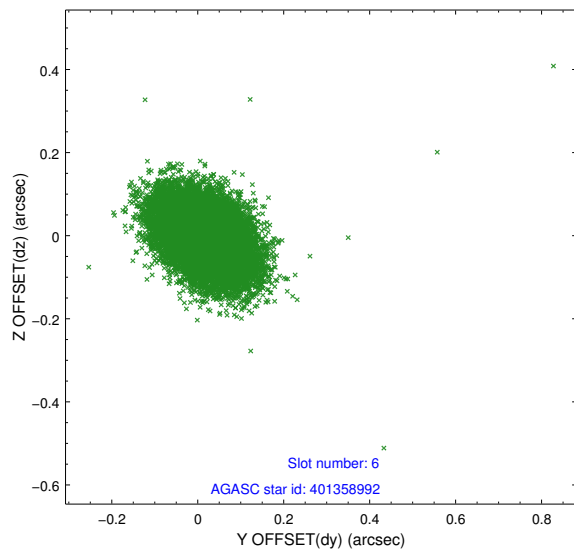
2.4.2 Slot 4



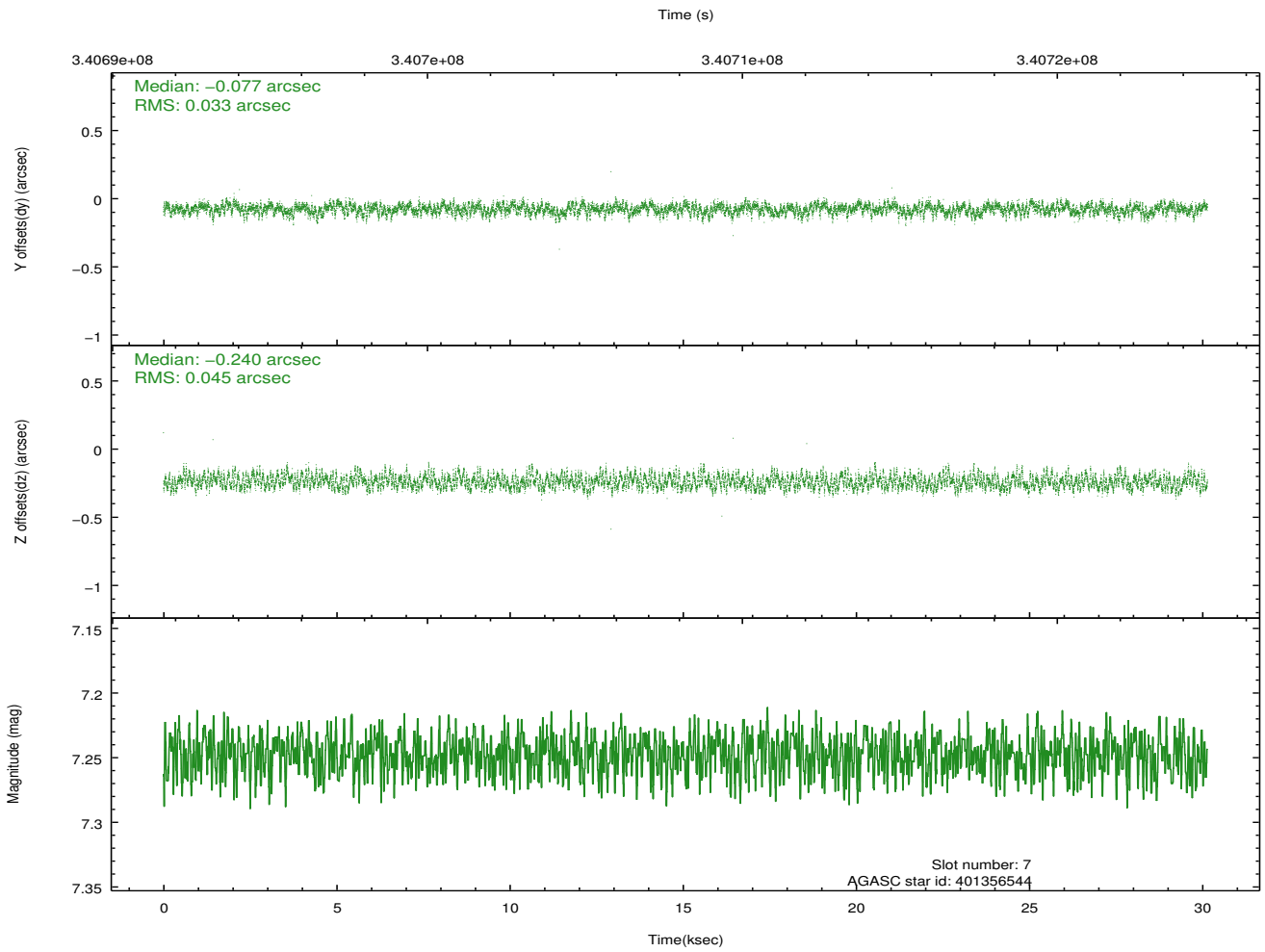
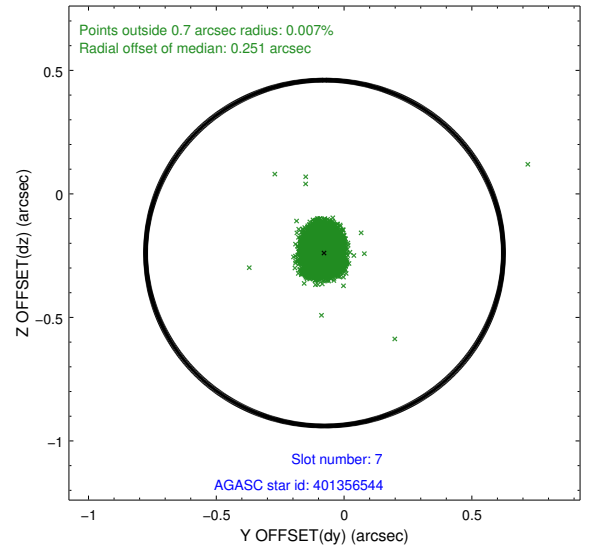
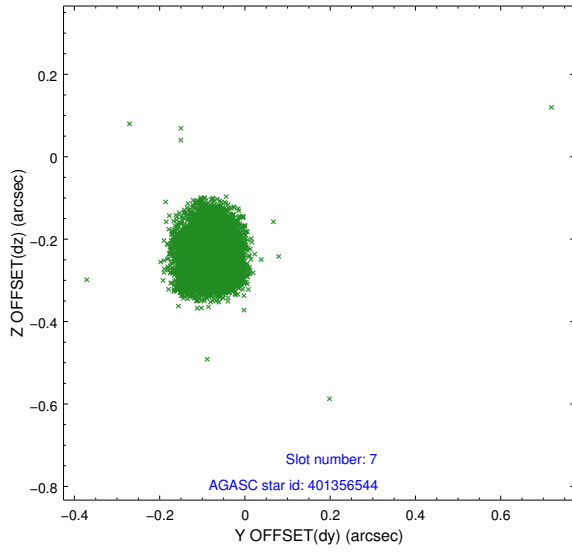
2.4.3 Slot 5



2.4.4 Slot 6

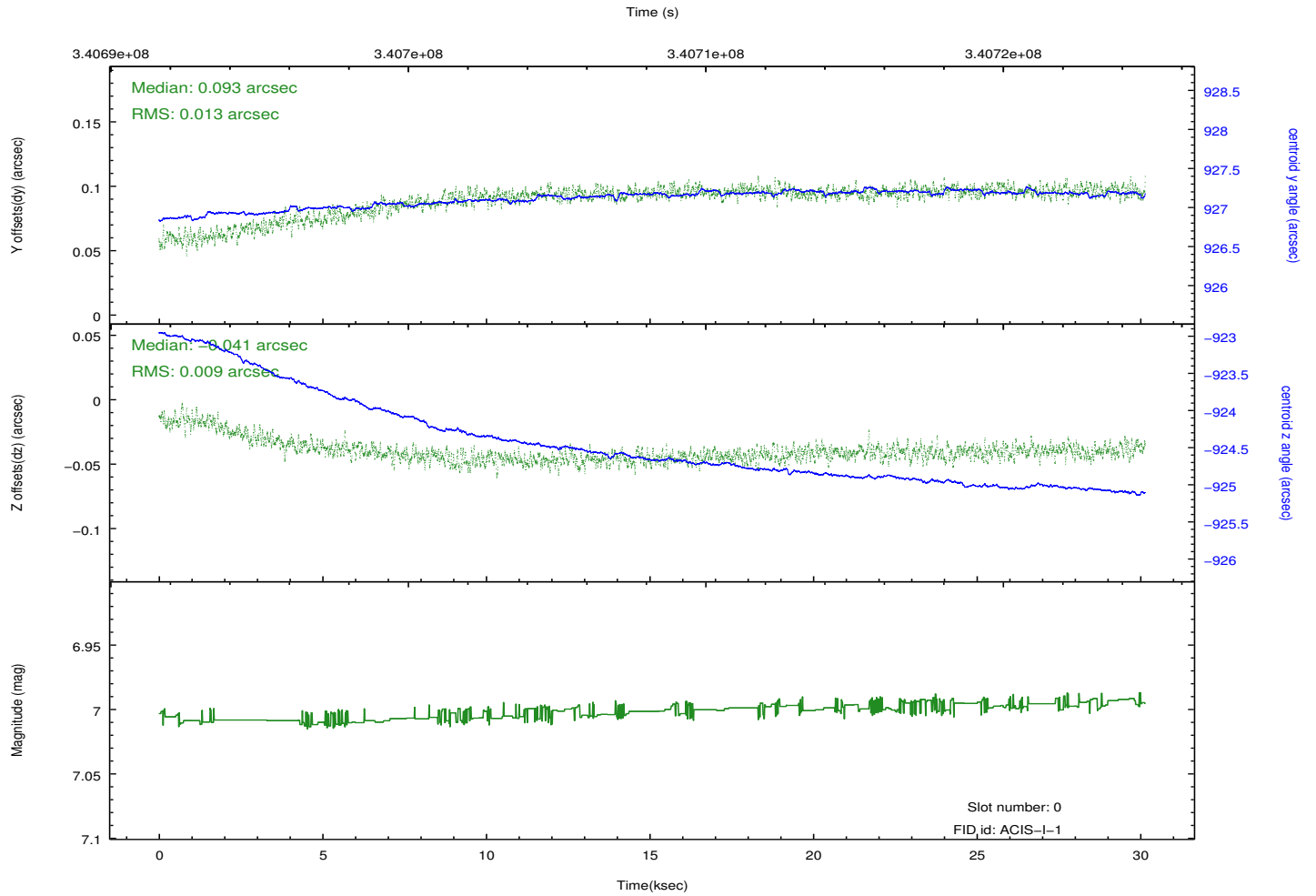
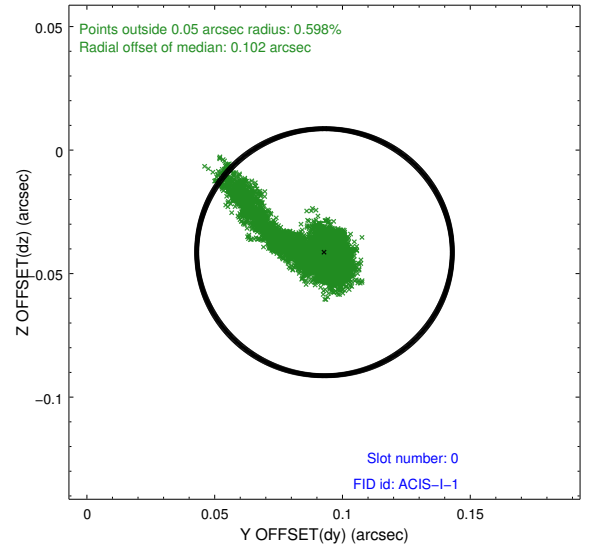
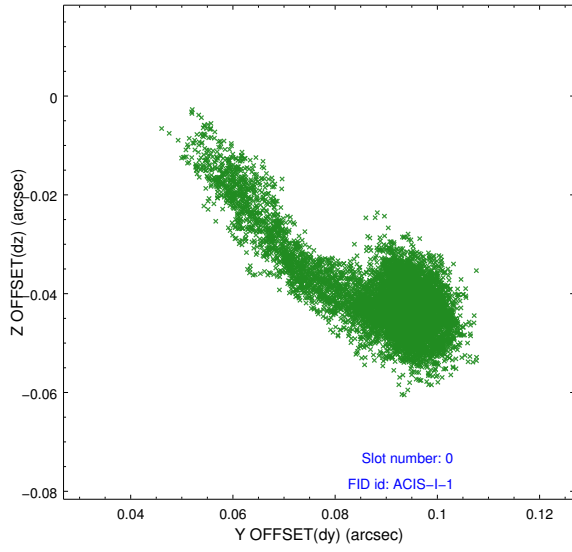


2.4.5 Slot 7

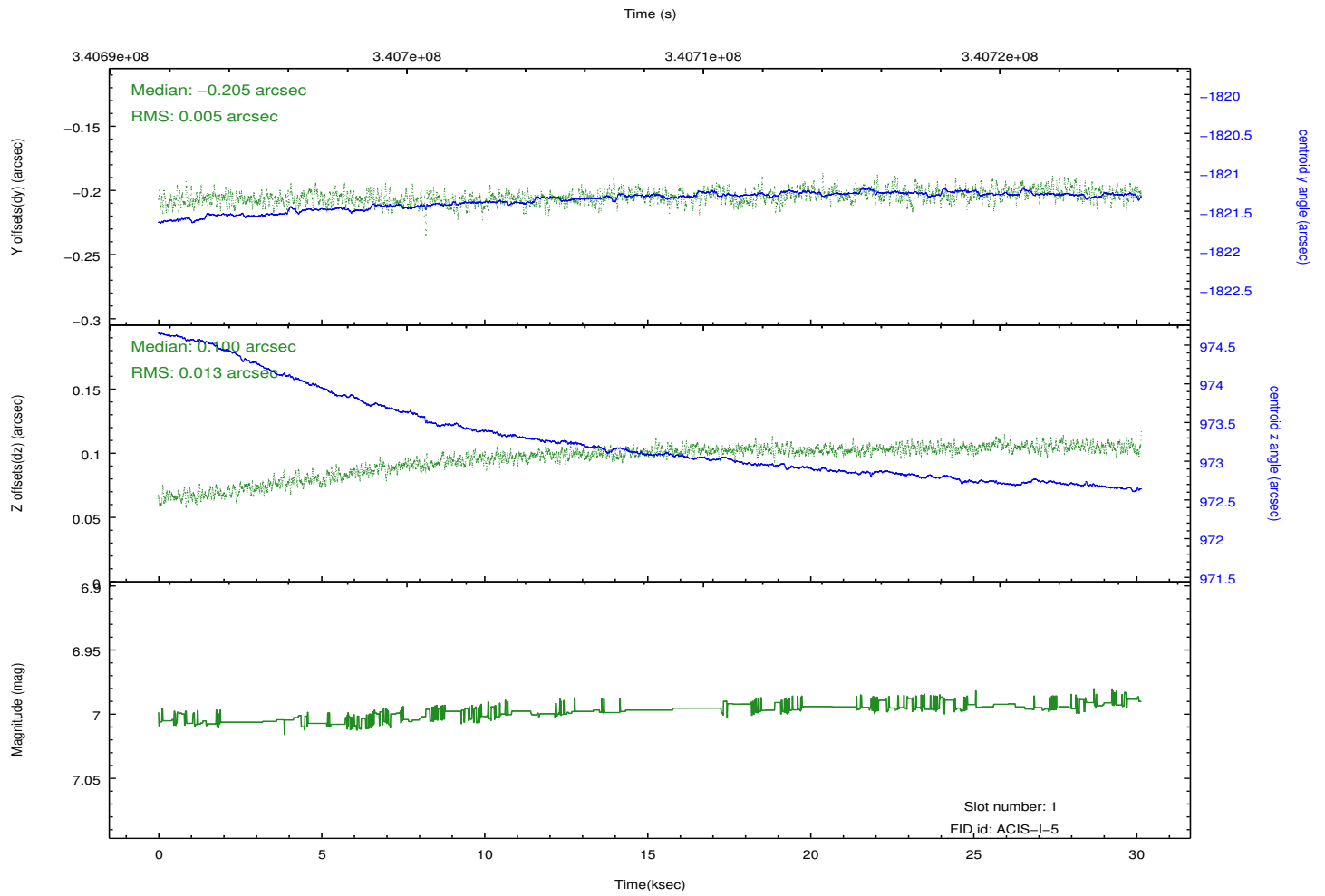
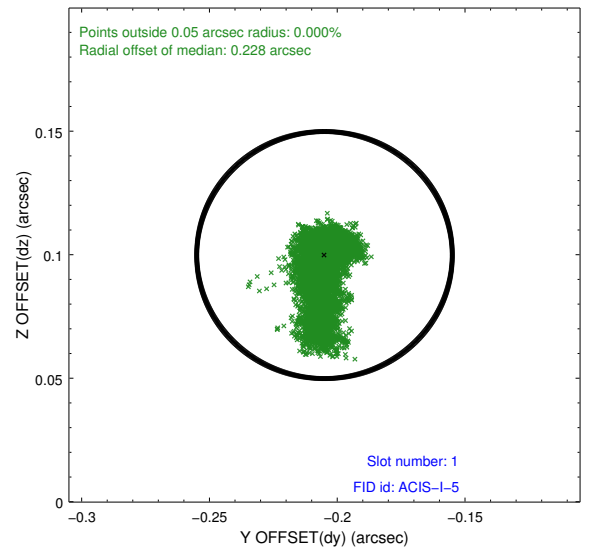
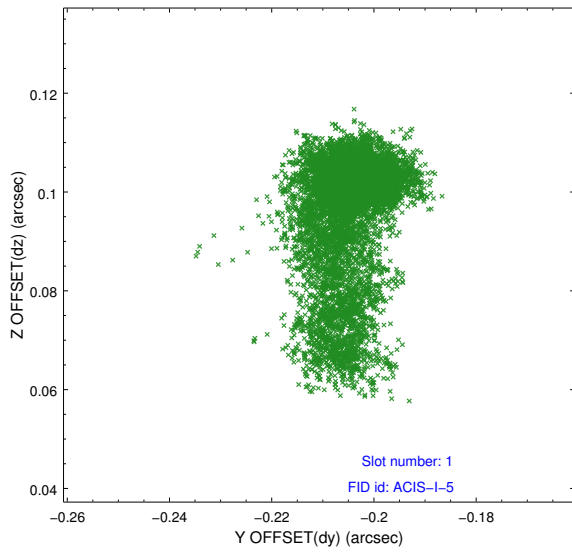


2.5 FID Slots

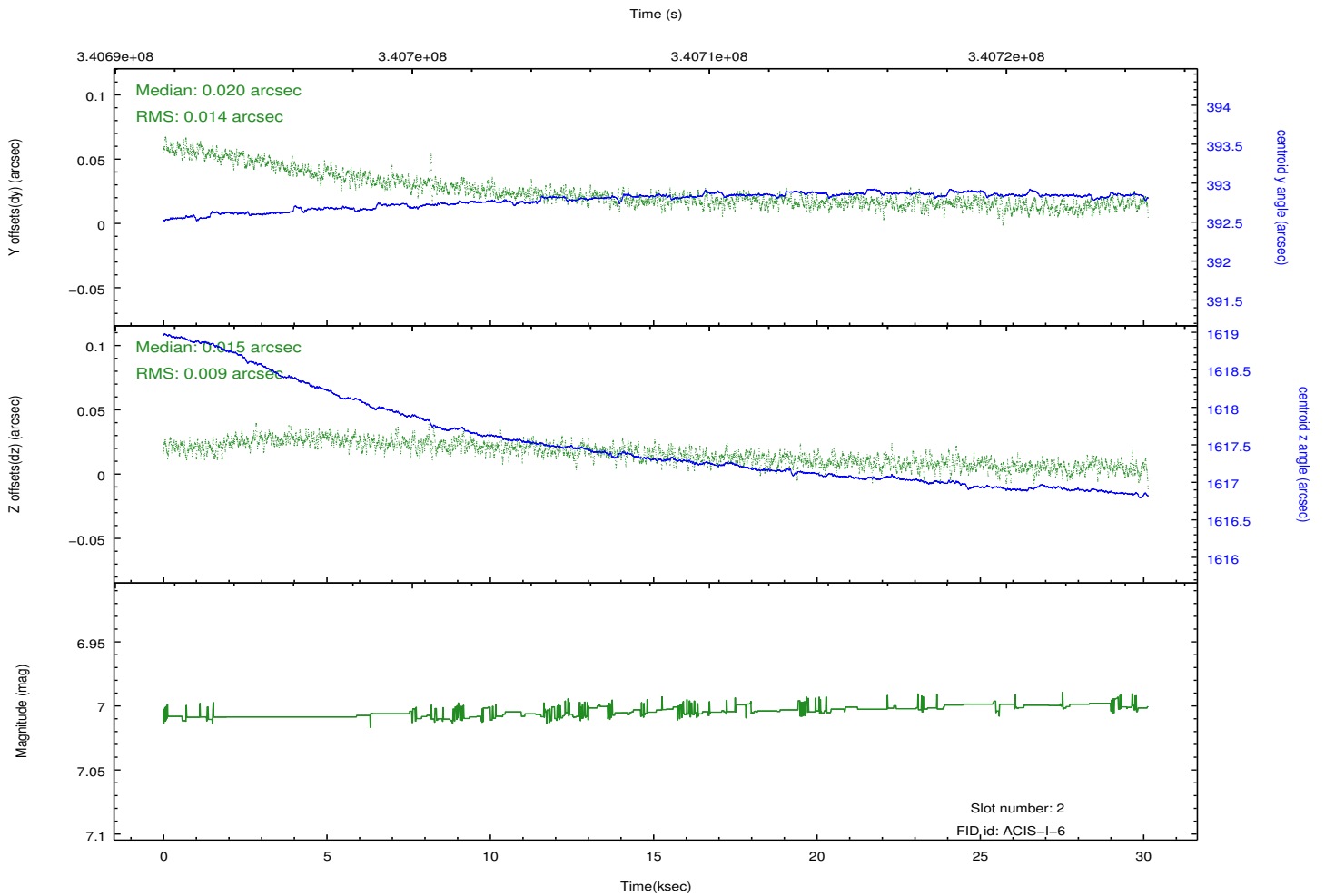
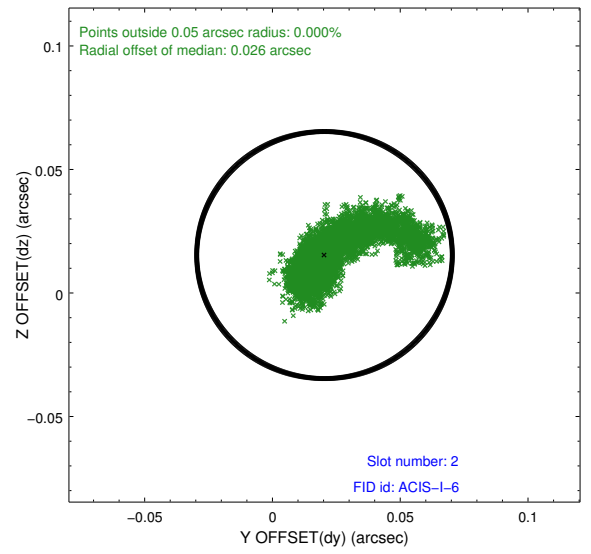
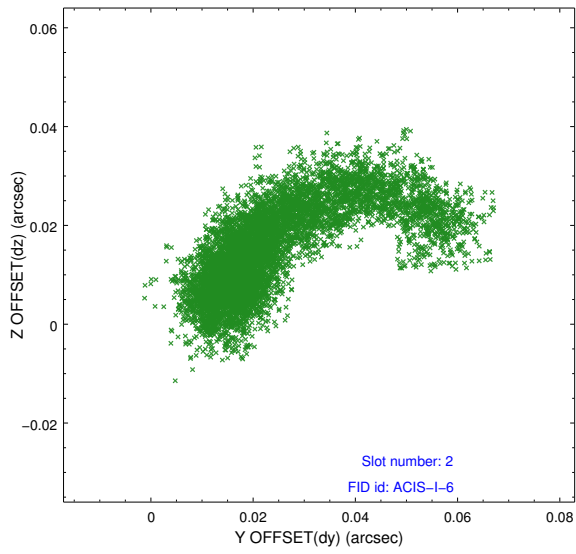
2.5.1 Slot 0



2.5.2 Slot 1



2.5.3 Slot 2



A Summary

A.1 Status

V&V Scientist	Beth Sundheim
V&V Date (YYYY-MM-DD)	2012.05.31
V&V Edition	1
V&V Disposition and Status	OK
V&V Charge Time	30.1444002

A.2 Comments