

V&V Reference Report

L2 ASCDS Version : 8.4.5

Observation 10805 - L2 Version 2
Chandra X-Ray Center

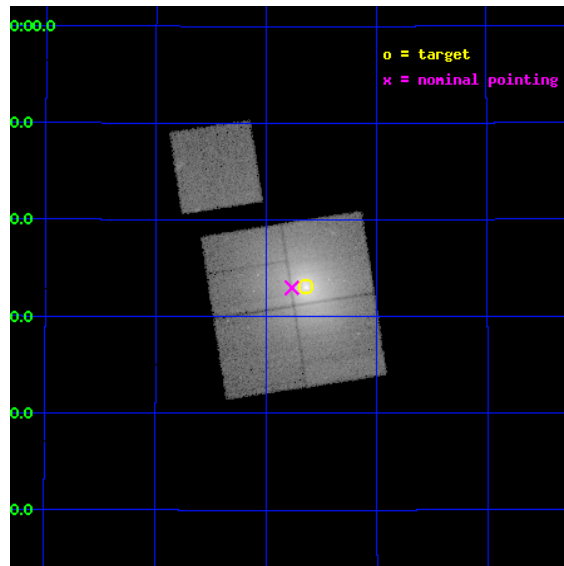
L2 Processing Date : Jun 17 2012

Contents

1	Front	2
2	OBI	3
2.1	OBI	3
2.1.1	Images	3
2.1.2	Bias	3
2.1.3	Parameters	4
2.1.4	Events	4
2.2	Compared Parameters	5
2.3	Aspect	6
2.4	Star Slots	9
2.4.1	Slot 3	9
2.4.2	Slot 4	10
2.4.3	Slot 5	11
2.4.4	Slot 6	12
2.4.5	Slot 7	13
2.5	FID Slots	14
2.5.1	Slot 0	14
2.5.2	Slot 1	15
2.5.3	Slot 2	16
A	Summary	17
A.1	Status	17
A.2	Comments	17

1 Front

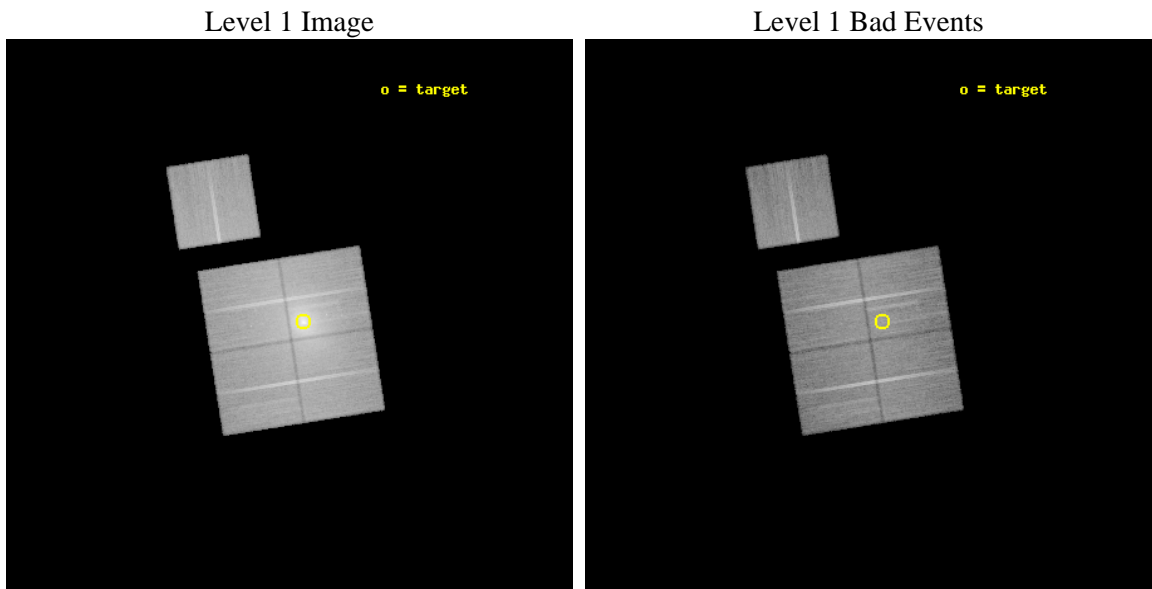
seq_num	800849	Sequence number
obs_id	10805	Observation id
title	Abell 2199: AGN outbursts and merger	Proposal title
observer	Dr. Stephen Murray	Principal investigator
object	Abell 2199	Source name
dtcycle	0	
cycle	P	events from which exps? Prim/Second/Both
ra_targ	247.16	Observer's specified target RA [deg]
dec_targ	39.551111	Observer's specified target Dec [deg]
ra_nom	247.19171347758	Nominal RA [deg]
dec_nom	39.549667276156	Nominal Dec [deg]
roll_nom	351.09101639896	Nominal Roll [deg]
revision	2	Processing version of data
ontime	30733.277345479	Sum of GTIs [s]
livetime	30331.72445145	Livetime [s]
ontime0	30736.418285906	Sum of GTIs [s]
ontime1	30736.418285906	Sum of GTIs [s]
ontime2	30742.70023644	Sum of GTIs [s]
ontime3	30733.277345479	Sum of GTIs [s]
ontime6	30733.277345419	Sum of GTIs [s]
l2events	440545	Number of level 2 events



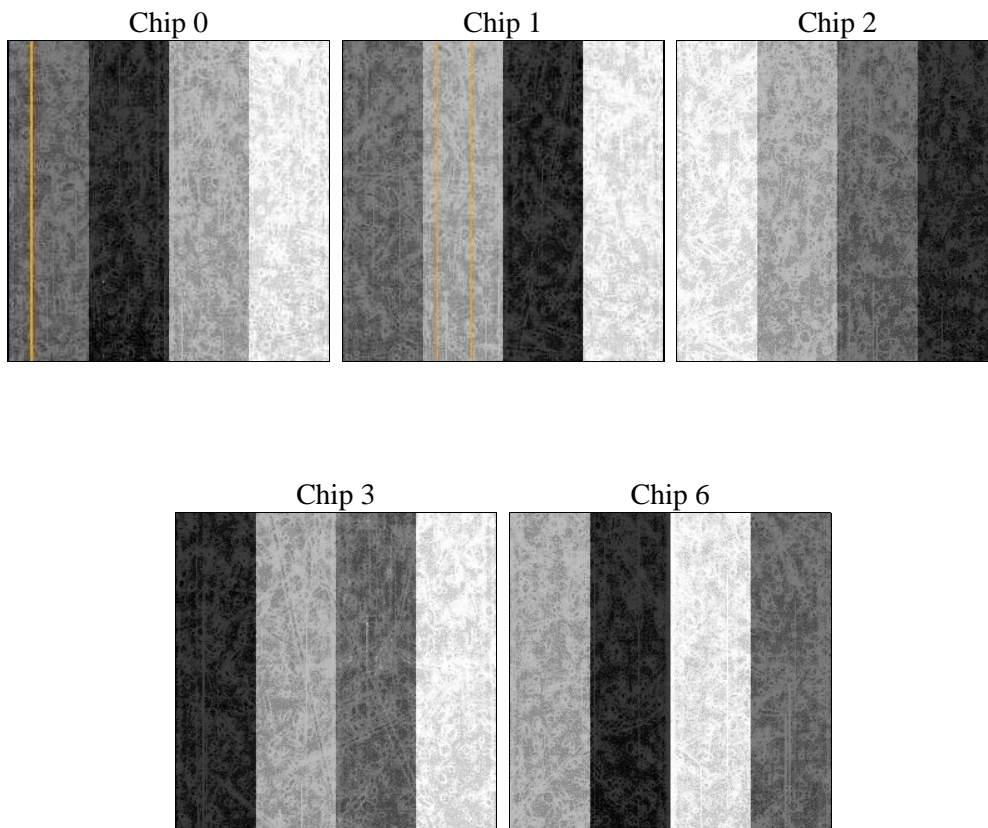
2 OBI

2.1 OBI

2.1.1 Images



2.1.2 Bias



2.1.3 Parameters

obi_num	1	Obi number	sched_exp_time	30588.279000	[s] Scheduled observation exposure time
ascdsver	8.4.5	Processing system revision	ontime	30733.277345479	Sum of GTIs [s]
caldsver	4.4.10	 	ontime0	30736.418285906	Sum of GTIs [s]
date	2012-06-17T05:56:07	Date and time of file creation	ontime1	30736.418285906	Sum of GTIs [s]
revision	2	Processing version of data	ontime2	30742.70023644	Sum of GTIs [s]
			ontime3	30733.277345479	Sum of GTIs [s]
			ontime6	30733.277345419	Sum of GTIs [s]
			l1events	1679150	Number of level 1 events

2.1.4 Events

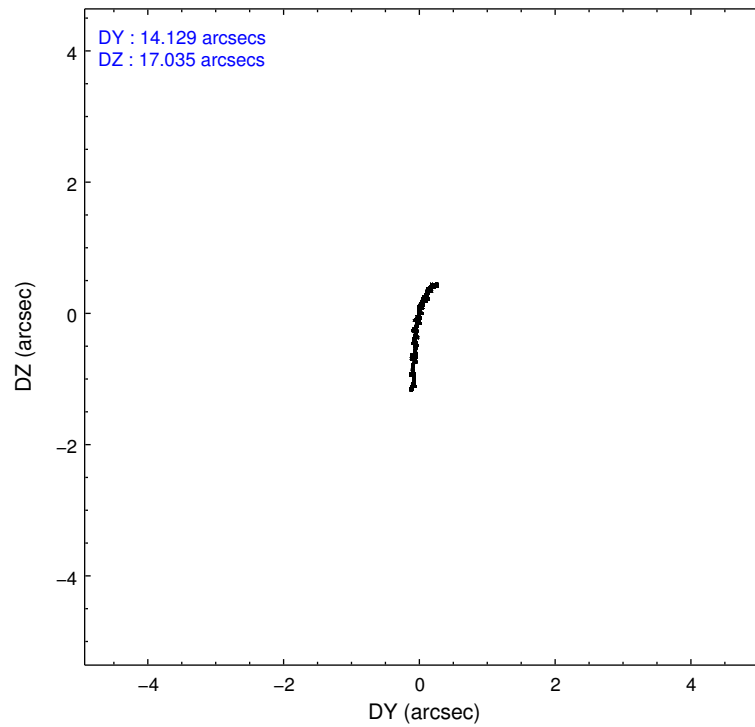
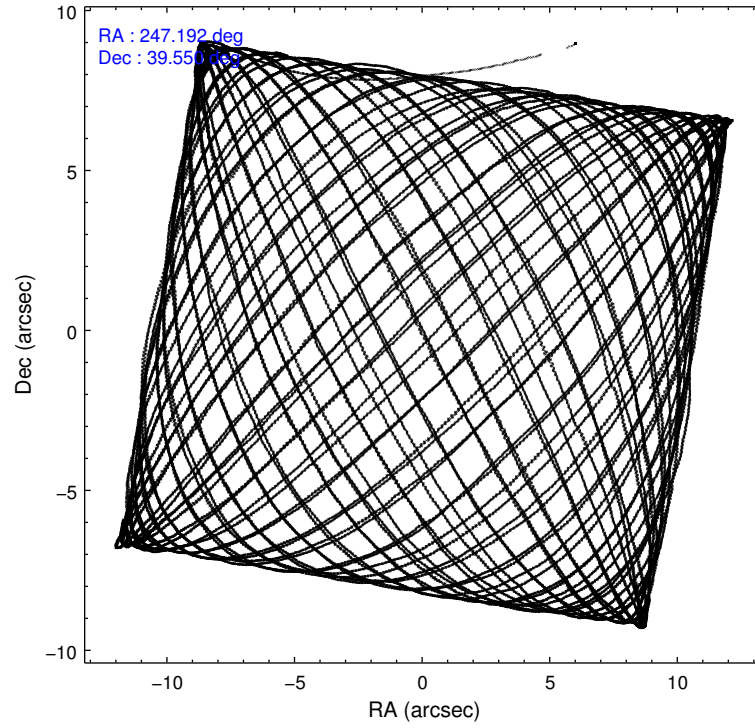
	ccd 0	ccd 1	ccd 2	ccd 3	ccd 6
level 1 events	272396	321013	333744	474320	277677
rejected events	222646	229459	252062	252376	244744
rejected %	81%	71%	75%	53%	88%

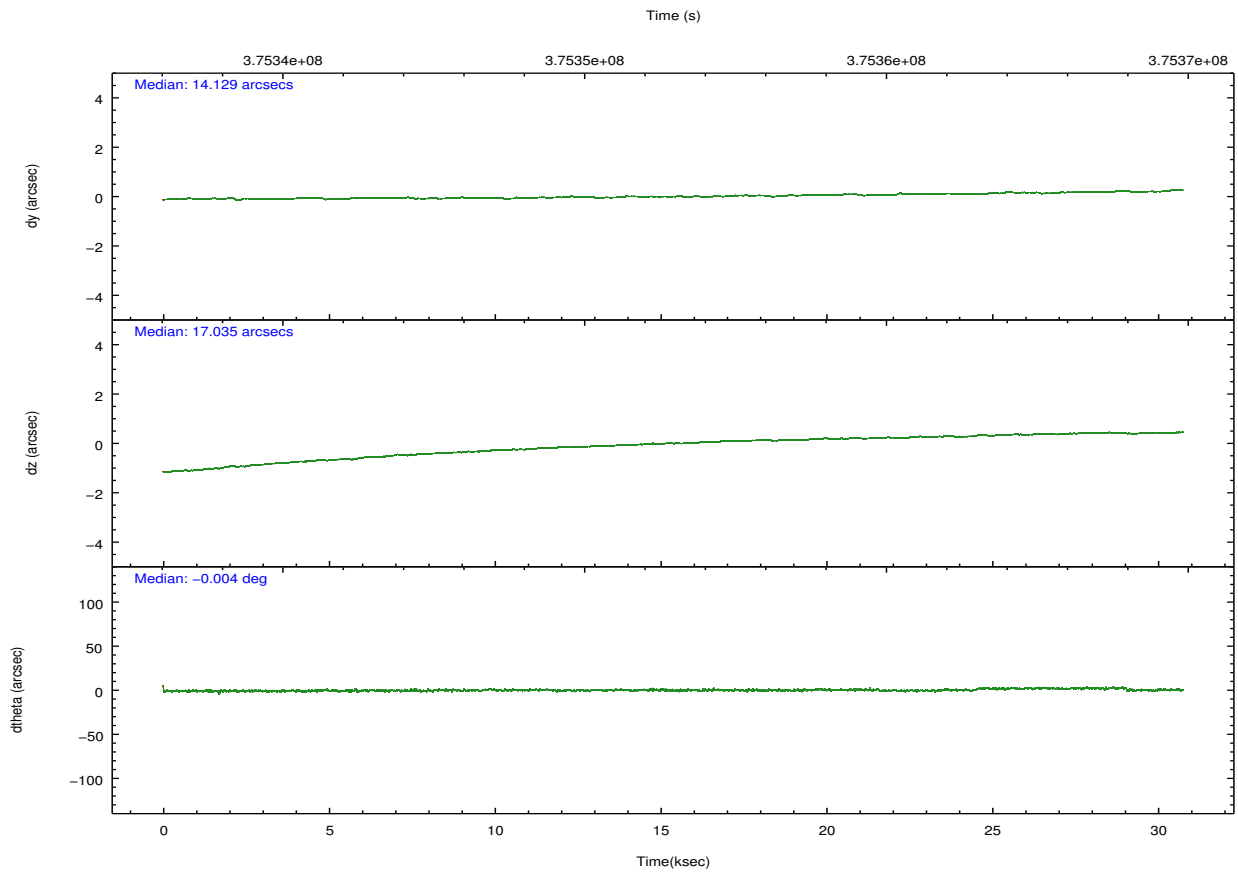
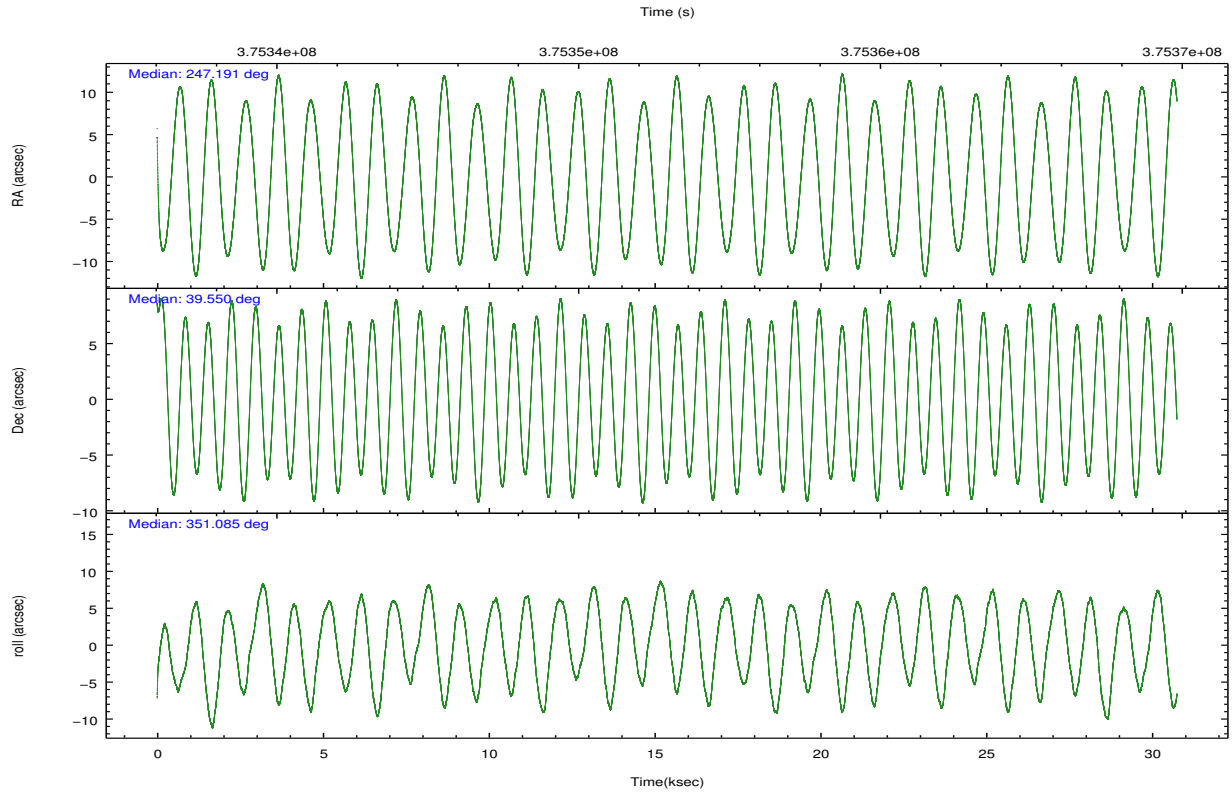
	ccd 0	ccd 1	ccd 2	ccd 3	ccd 6
grade 0 events	27866	60909	55534	172037	13682
	10%	18%	16%	36%	4%
grade 1 events	296	448	496	1379	171
	0%	0%	0%	0%	0%
grade 2 events	9214	13497	11717	24658	6821
	3%	4%	3%	5%	2%
grade 3 events	3725	5042	4480	8436	3212
	1%	1%	1%	1%	1%
grade 4 events	3497	4955	4517	8390	3172
	1%	1%	1%	1%	1%
grade 5 events	9940	10915	9595	12383	10857
	3%	3%	2%	2%	3%
grade 6 events	5958	7795	6226	9638	6379
	2%	2%	1%	2%	2%
grade 7 events	211900	217452	241179	237399	233383
	77%	67%	72%	50%	84%

2.2 Compared Parameters

Parameter	Planned	Actual	Parameter	Planned	Actual
Instrument	ACIS	ACIS	Obspar format version number	7	7
Detector	ACIS-01236	ACIS-01236	Obspar file type	PREDICTED	ACTUAL
Grating	NONE	NONE	Obspar update status	NONE	UPDATED
Data mode	VFAINT	VFAINT	CCD I0 on	Y	Y
Observation mode	POINTING	POINTING	CCD I1 on	Y	Y
[deg] Pointing RA	247.158498	247.1917134775783	CCD I2 on	Y	Y
[deg] Pointing Dec	39.539646	39.54966727615619	CCD I3 on	Y	Y
[deg] Pointing Roll	350.903480	351.0910163989553	CCD S0 on	N	N
[mm] SIM focus pos	-0.782348	-0.7809083437167272	CCD S1 on	N	N
[mm] SIM defocus	0	0.001439871863259334	CCD S2 on	O1	Y
[mm] SIM translation stage pos	-230.292463	-230.288652785182	CCD S3 on	N	N
[mm] SIM translation stage offset	-3.3	-3.303800217747721	CCD S4 on	N	N
[s] Observation start time (MET)	375337713.184000	375336572.87983	CCD S5 on	N	N
Observation start date	2009-11-23T04:27:27	2009-11-23T04:09:32	Number of optional ACIS chips dropped	0	0
[s] Observation end time (MET)	375368301.184000	375368539.04394	On-chip summing requested	N	N
Observation end date	2009-11-23T12:57:15	2009-11-23T13:02:19	Subarray requested	NONE	NONE
Read mode	TIMED	TIMED	Alternating exposures requested	N	N
			[s] Primary exposure time	0.000000	3.1

2.3 Aspect



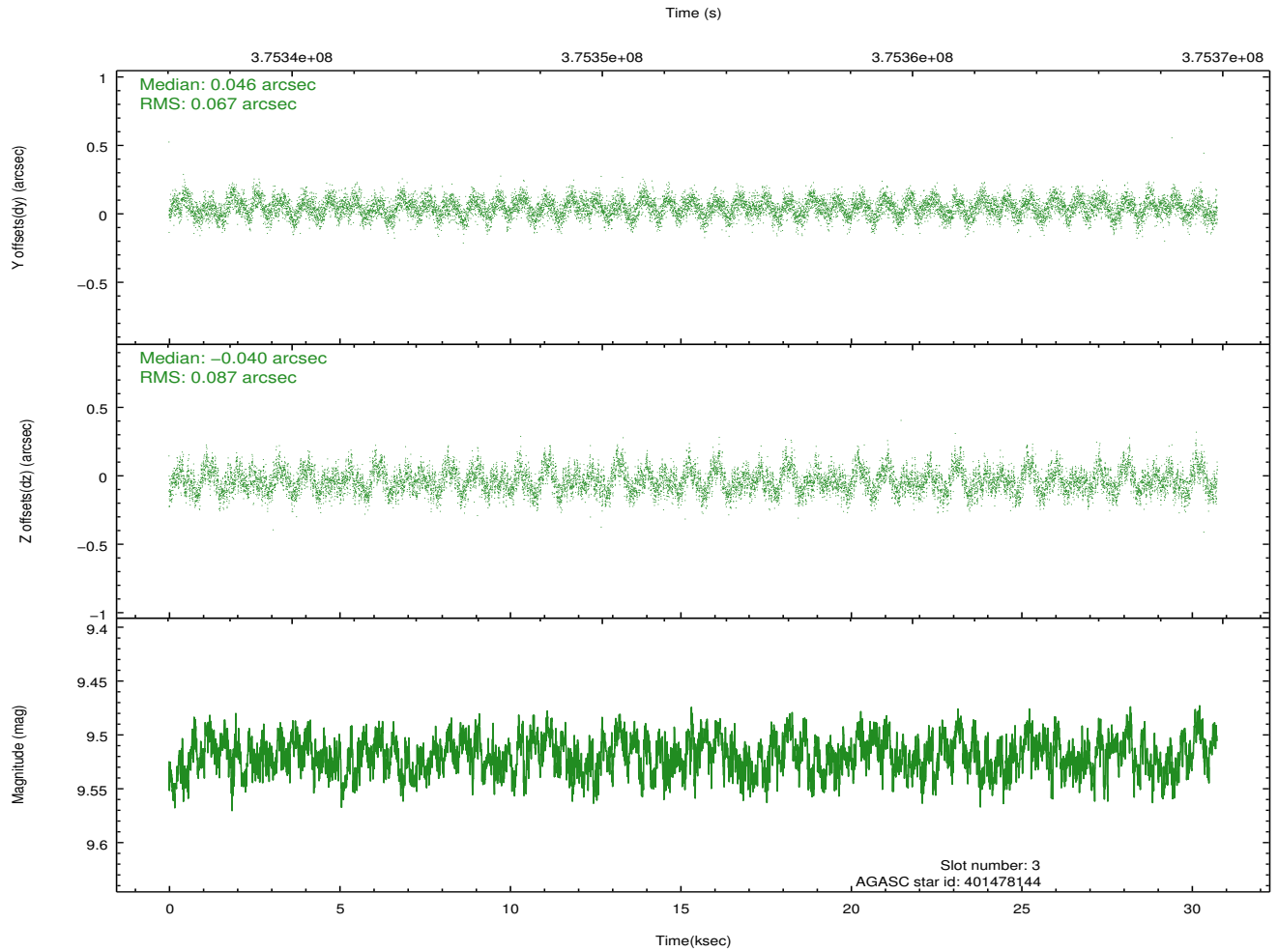
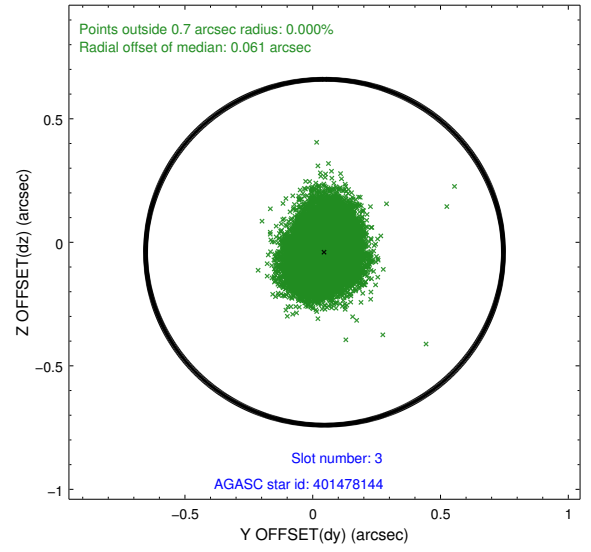
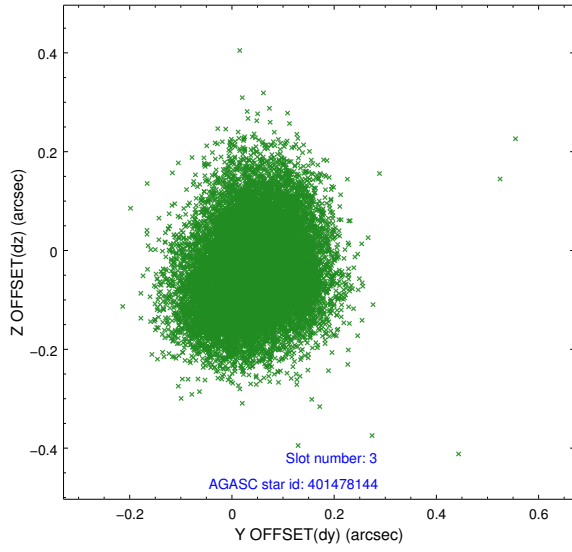


Slot Statistics

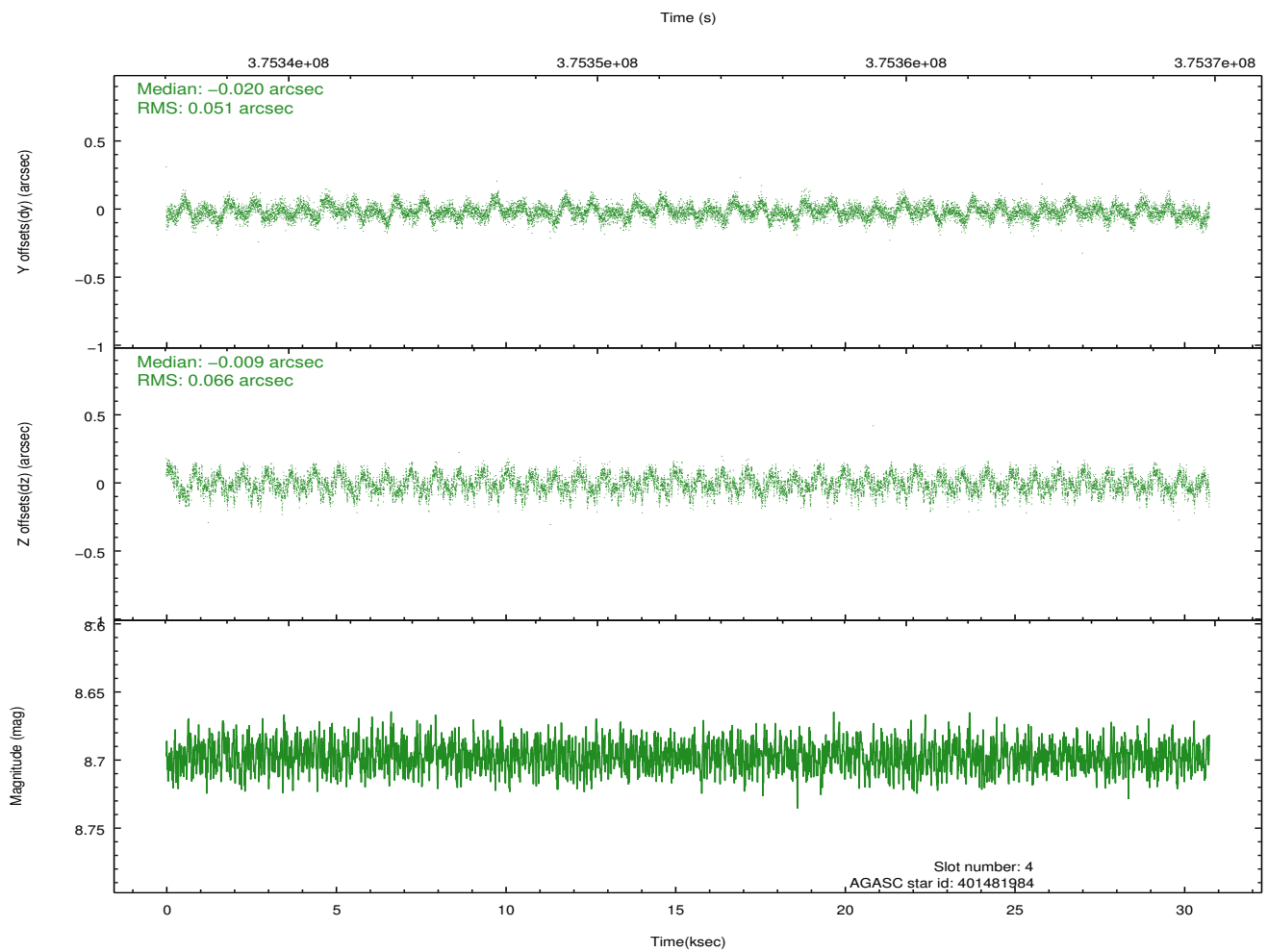
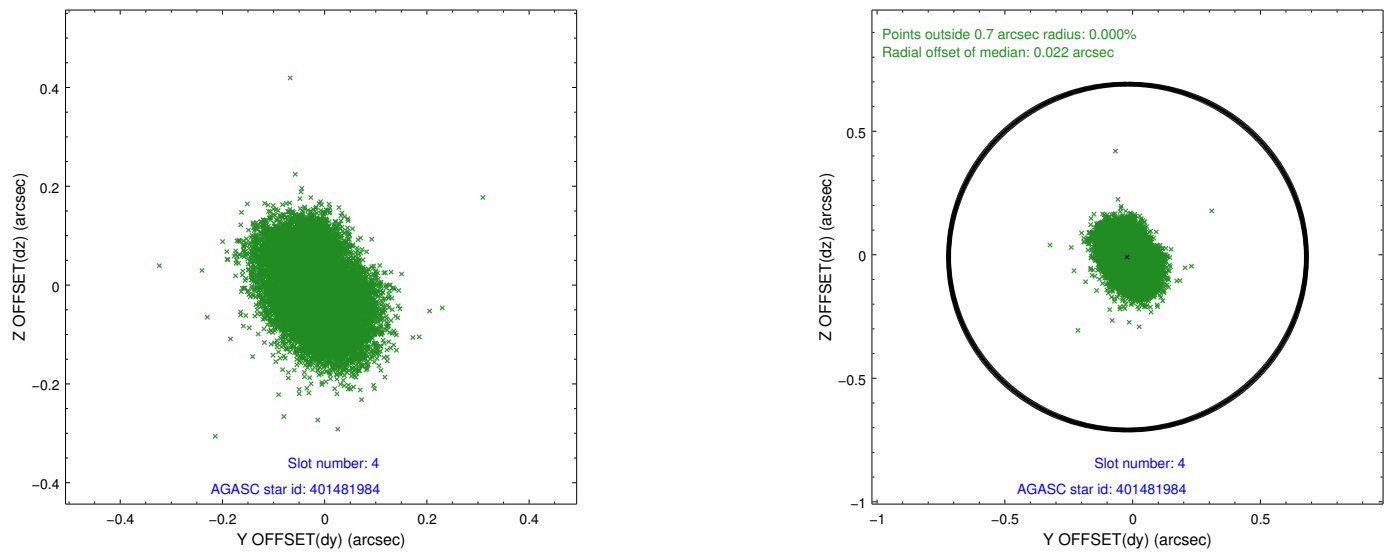
slot	status	id	mag	n_pts	med_dy	med_dz	dr1	dr2	ra	dec	mean_y	mean_z
0	FID	ACIS-I-2	6.96	7499	-0.102	-0.078	0.013	0.022	0.000000	0.000000	-769.16	-914.35
1	FID	ACIS-I-4	6.96	7497	0.164	0.081	0.008	0.015	0.000000	0.000000	2145.08	991.98
2	FID	ACIS-I-5	7.02	7500	-0.164	0.066	0.012	0.020	0.000000	0.000000	-1822.83	989.38
3	GUIDE	401478144	9.52	14984	0.046	-0.040	0.117	0.188	247.248621	39.077700	512.39	-1602.21
4	GUIDE	401481984	8.70	14986	-0.020	-0.009	0.091	0.142	247.136950	39.776672	-193.43	832.99
5	GUIDE	401483160	9.70	14972	-0.068	0.083	0.129	0.217	247.172429	38.956724	370.86	-2066.07
6	GUIDE	401476712	9.64	14985	0.093	-0.105	0.133	0.218	247.950954	39.205436	2372.28	-829.06
7	GUIDE	401479168	9.82	14967	-0.053	0.060	0.131	0.204	248.051525	39.792234	2293.82	1301.48

2.4 Star Slots

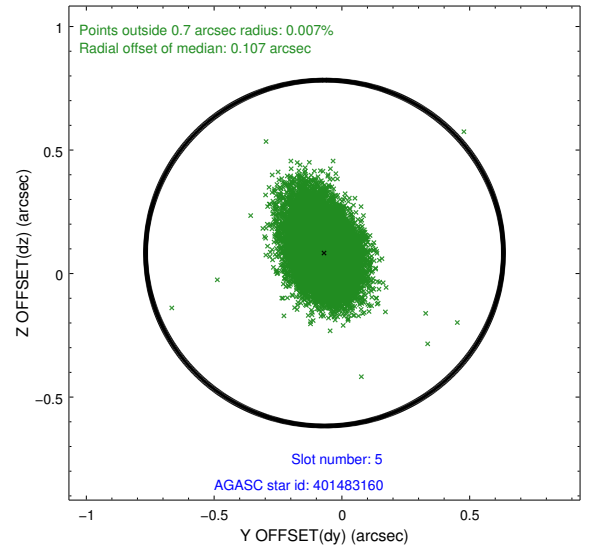
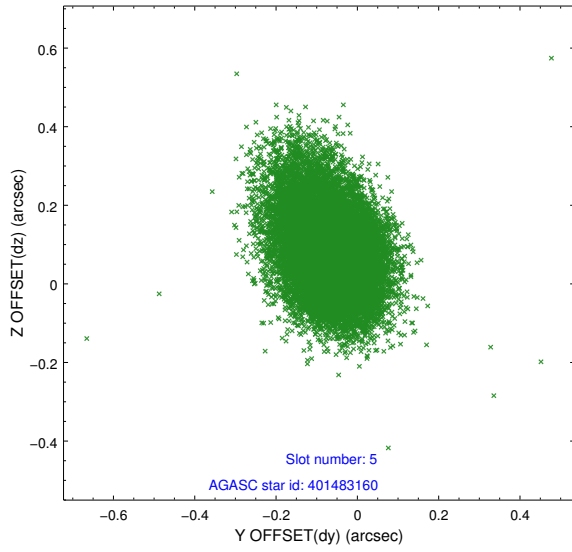
2.4.1 Slot 3



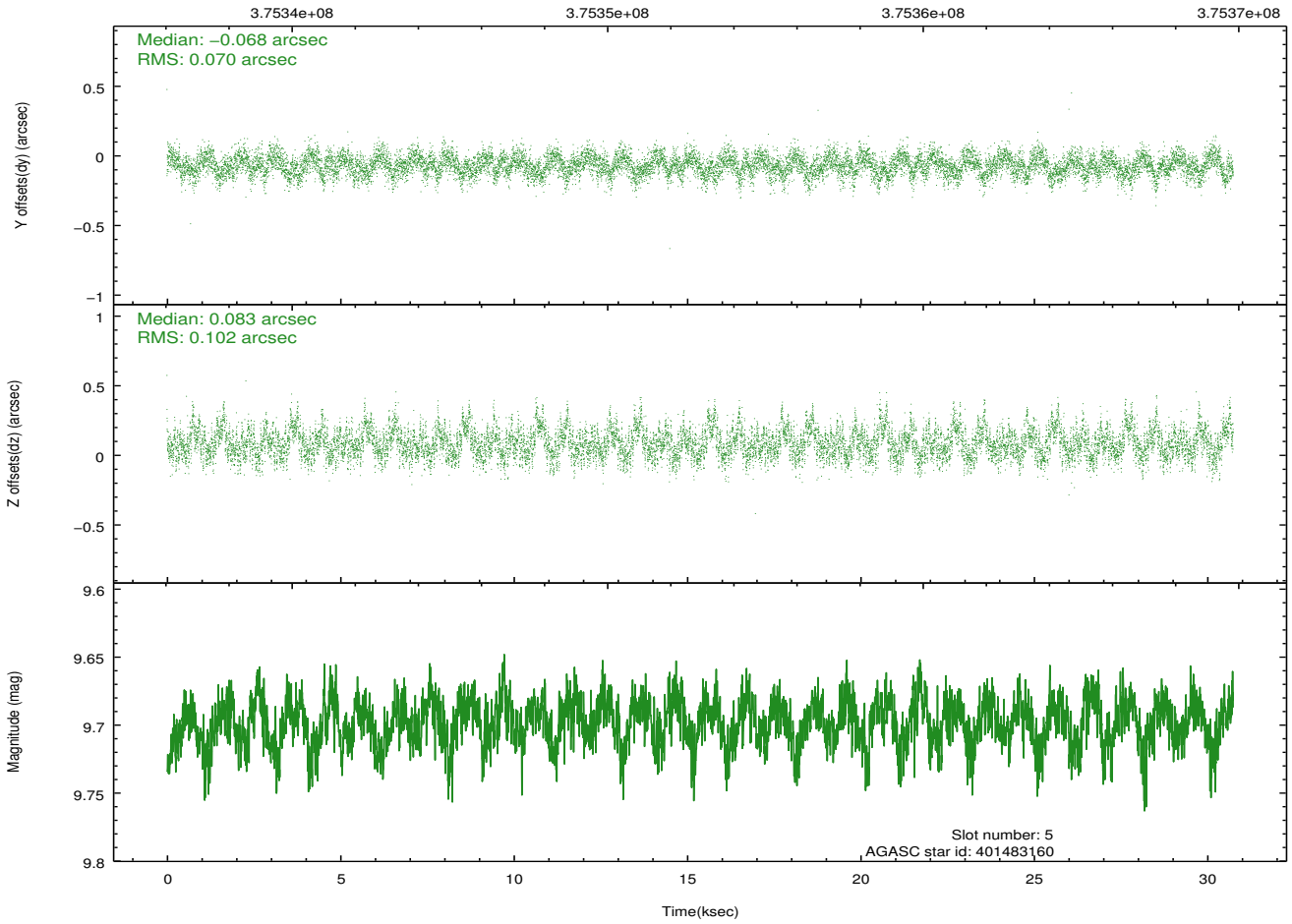
2.4.2 Slot 4



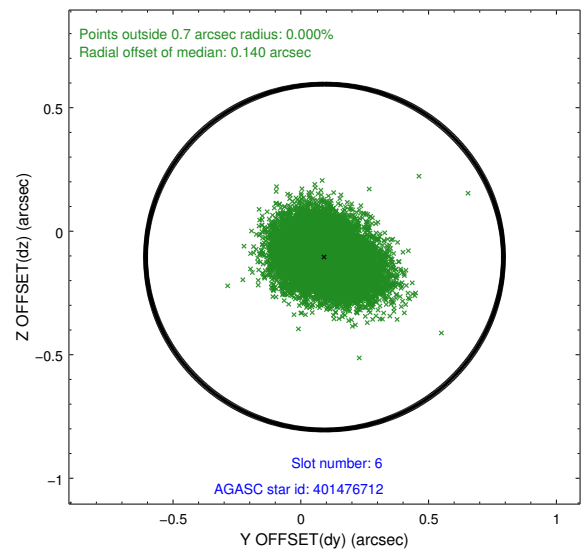
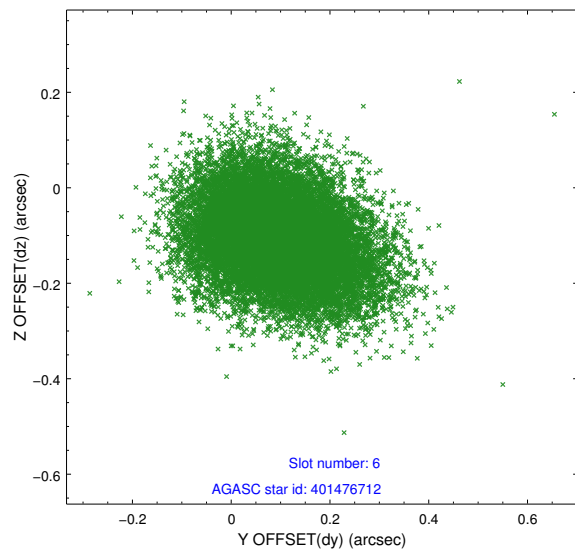
2.4.3 Slot 5



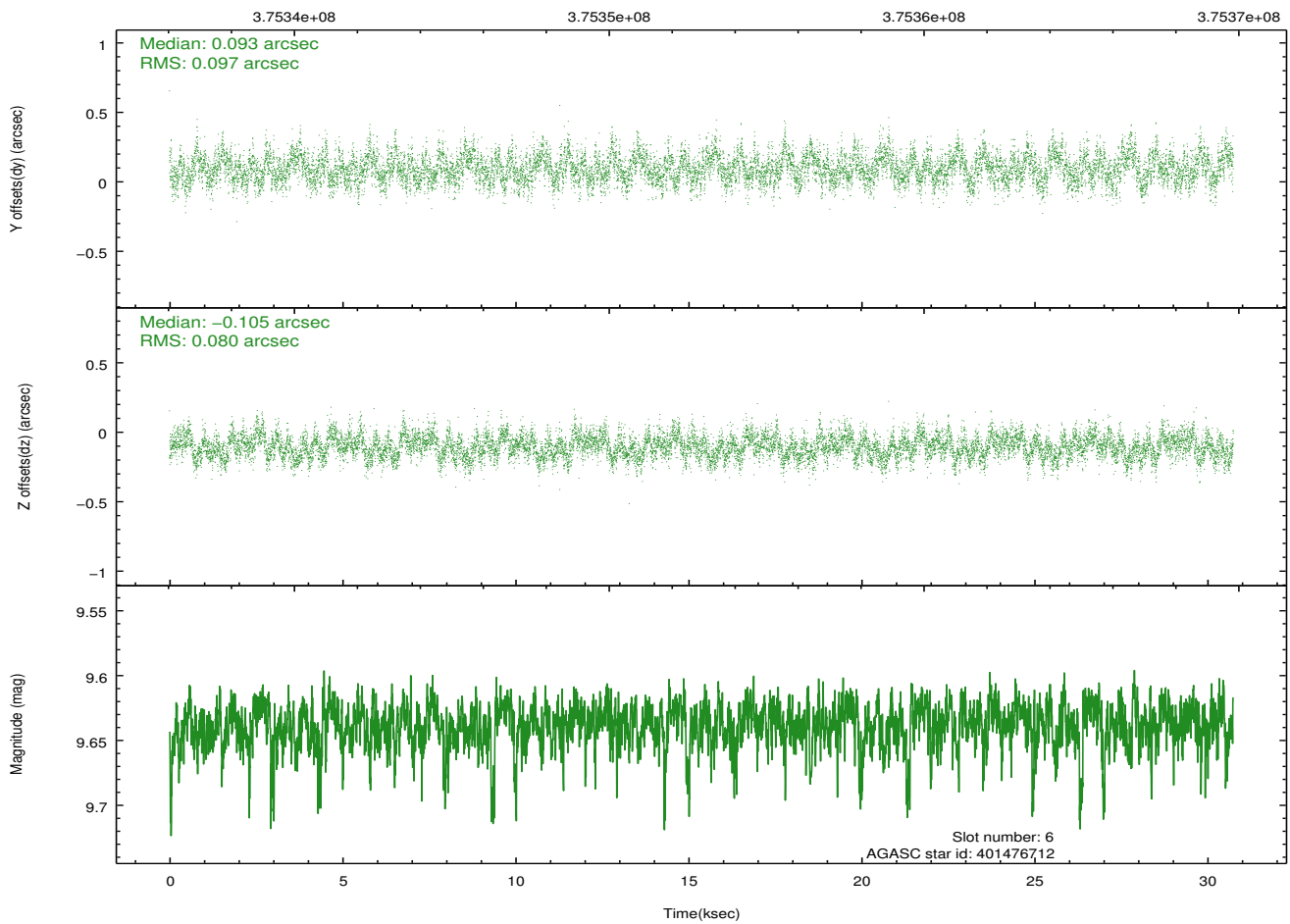
Time (s)



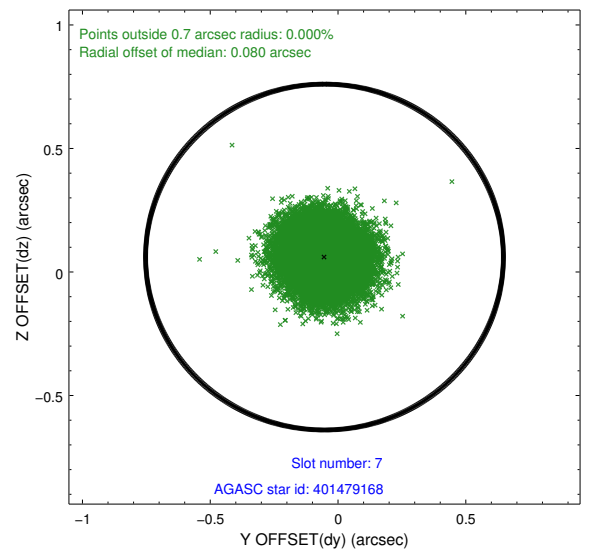
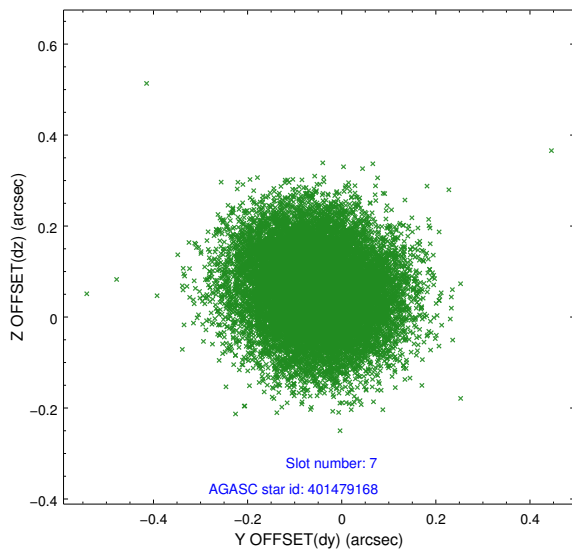
2.4.4 Slot 6



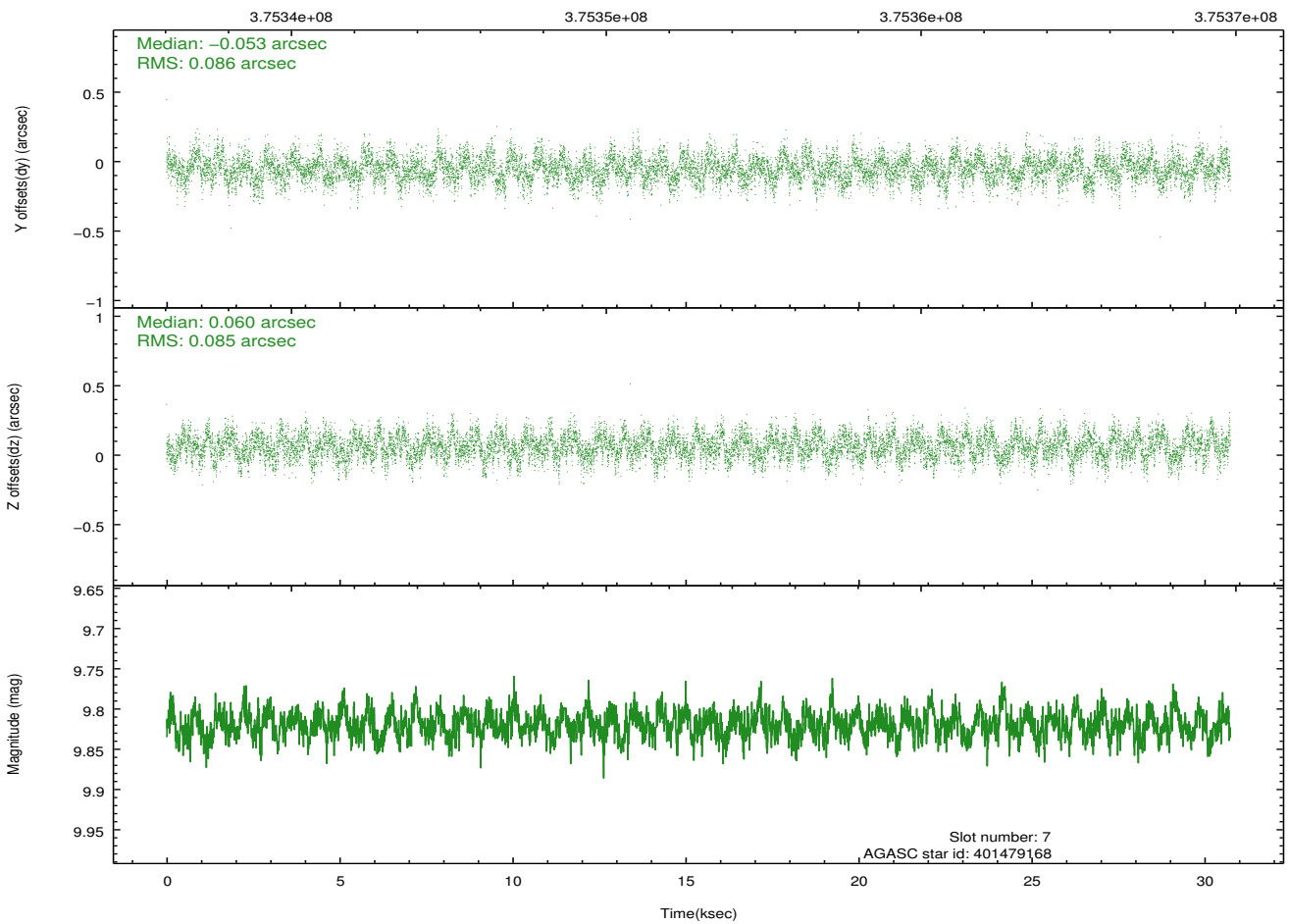
Time (s)



2.4.5 Slot 7

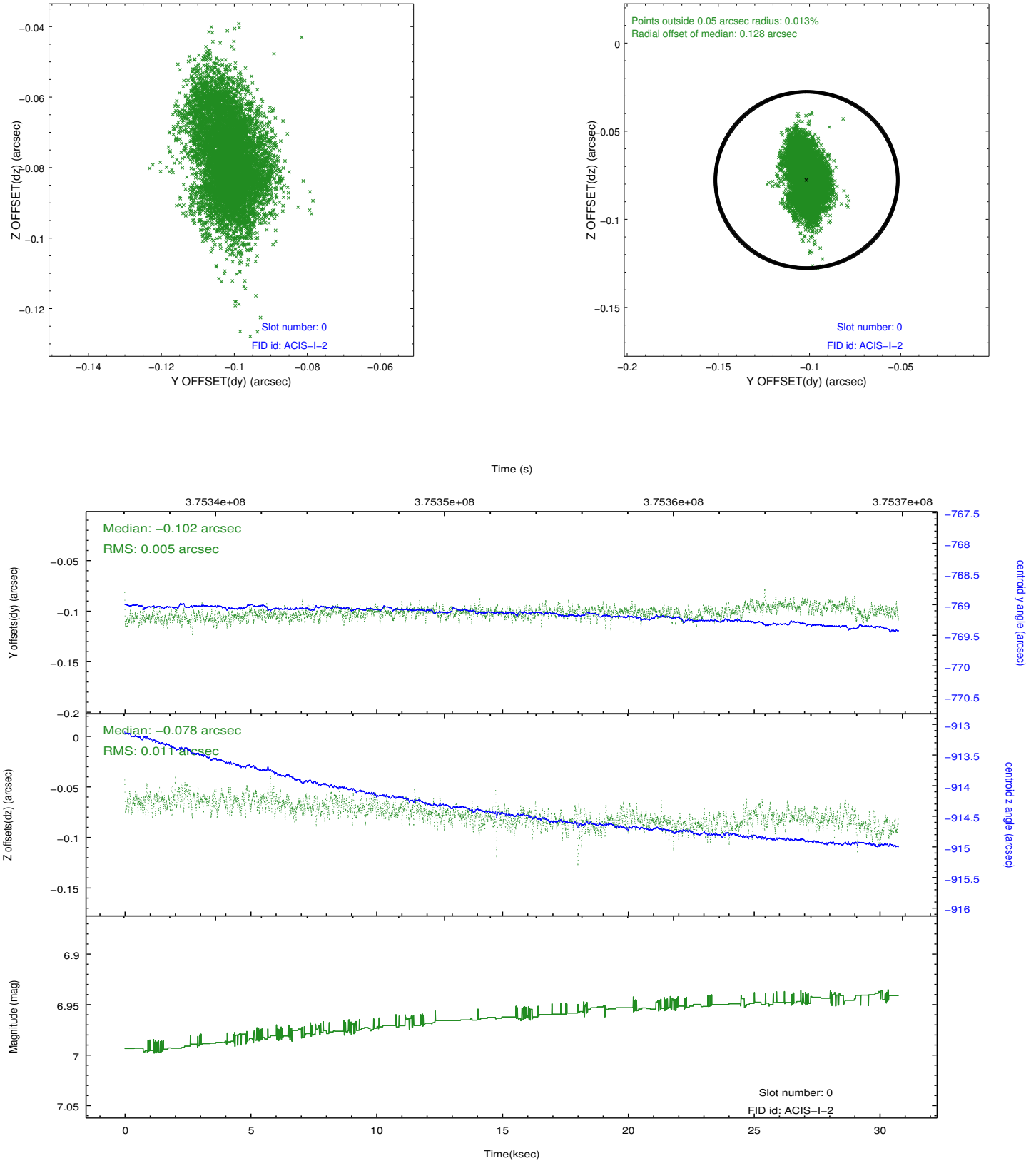


Time (s)

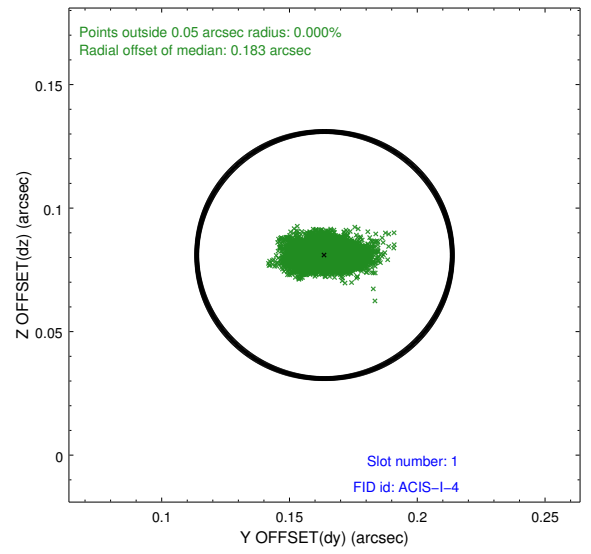
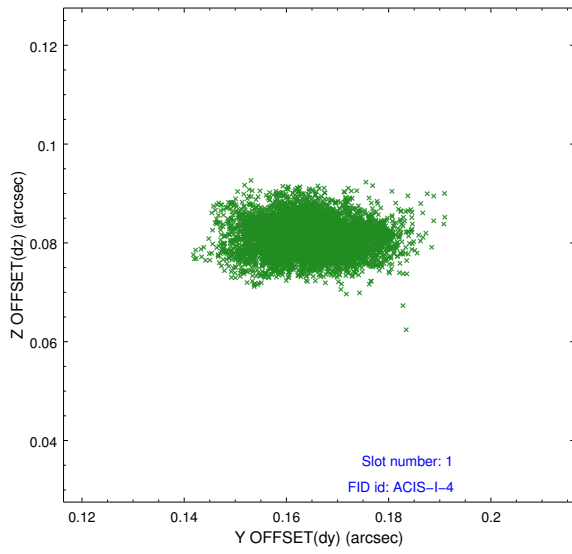


2.5 FID Slots

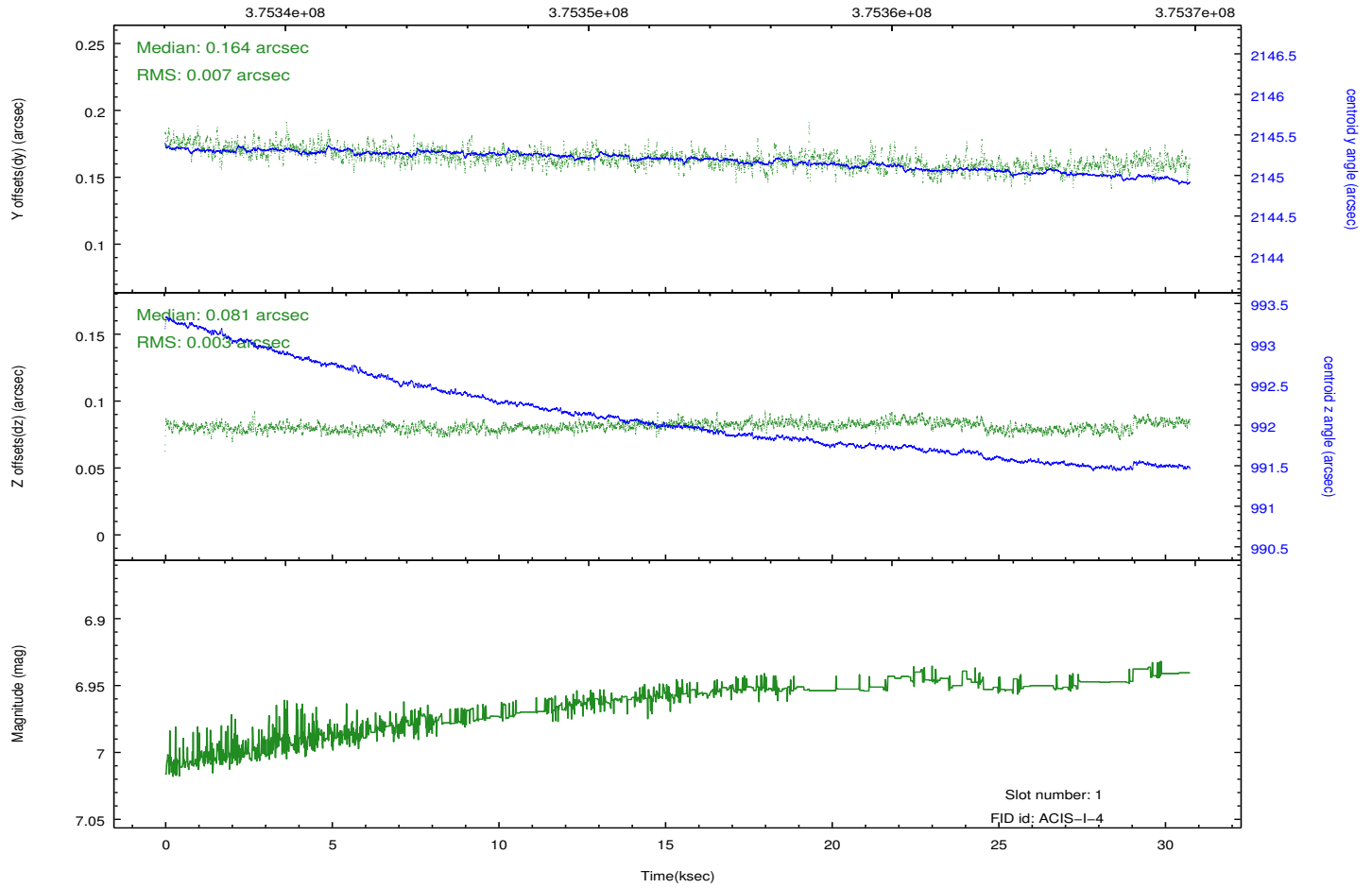
2.5.1 Slot 0



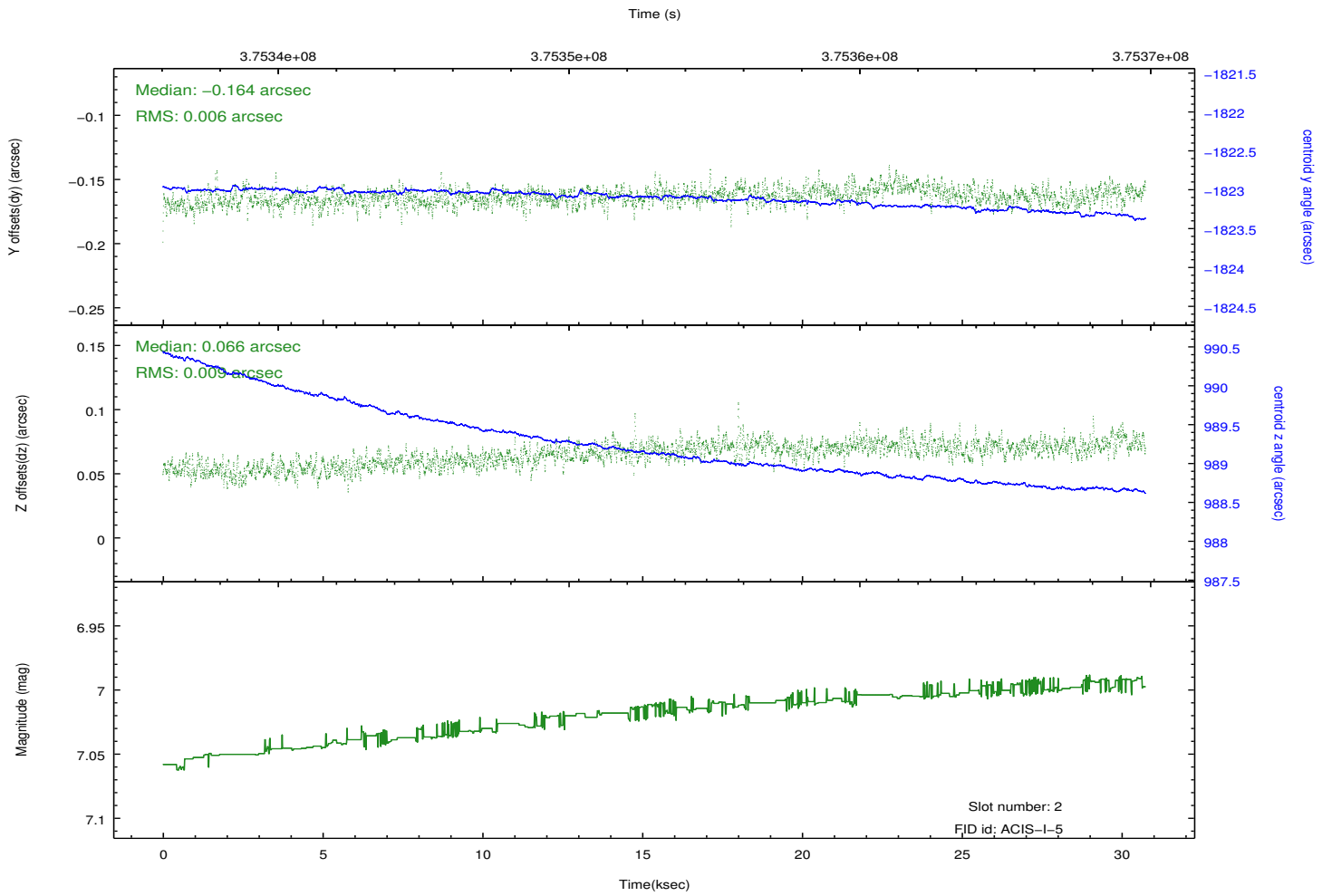
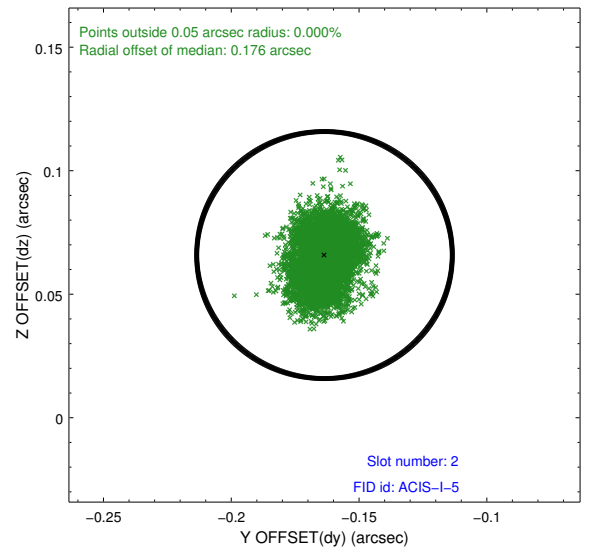
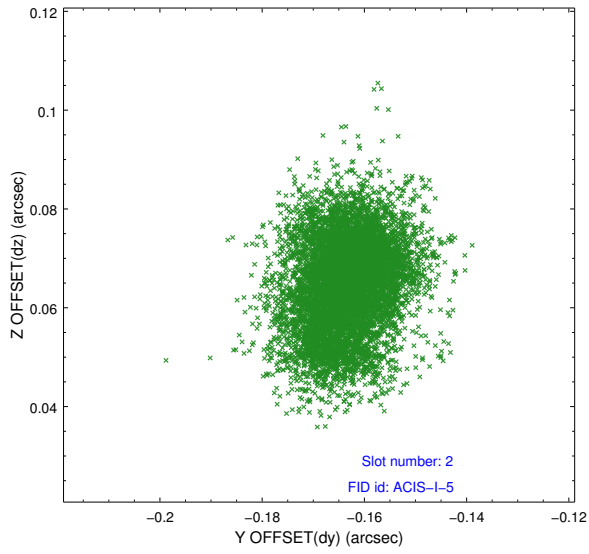
2.5.2 Slot 1



Time (s)



2.5.3 Slot 2



A Summary

A.1 Status

V&V Scientist	Jen Lauer
V&V Date (YYYY-MM-DD)	2012.06.20
V&V Edition	1
V&V Disposition and Status	OK
V&V Charge Time	30.733277345419

A.2 Comments