

V&V Reference Report

L2 ASCDS Version : 8.4.5

Observation 10925 - L2 Version 2
Chandra X-Ray Center

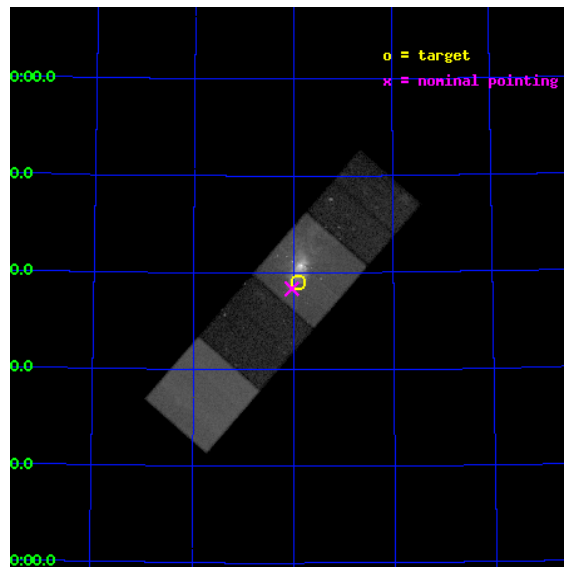
L2 Processing Date : Jun 9 2012

Contents

1	Front	2
2	OBI	3
2.1	OBI	3
2.1.1	Images	3
2.1.2	Bias	3
2.1.3	Parameters	4
2.1.4	Events	4
2.2	Compared Parameters	5
2.3	Aspect	6
2.4	Star Slots	9
2.4.1	Slot 3	9
2.4.2	Slot 4	10
2.4.3	Slot 5	11
2.4.4	Slot 6	12
2.4.5	Slot 7	13
2.5	FID Slots	14
2.5.1	Slot 0	14
2.5.2	Slot 1	15
2.5.3	Slot 2	16
A	Summary	17
A.1	Status	17
A.2	Comments	17

1 Front

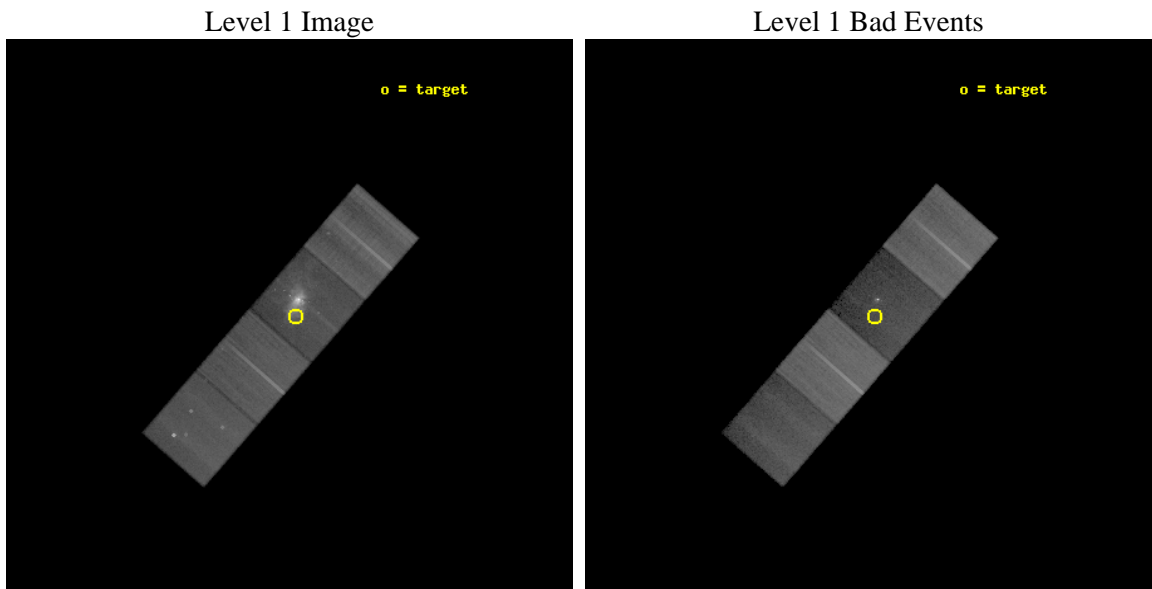
seq_num	600737	Sequence number
obs_id	10925	Observation id
title	Wide, deep and sharp: A comprehensive observation of M82, the exemplar of starburst activity	Proposal title
observer	Dr David Strickland	Principal investigator
object	M82-SW	Source name
dtcycle	0	
cycle	P	events from which exps? Prim/Second/Both
ra_targ	148.975833	Observer's specified target RA [deg]
dec_targ	69.649361	Observer's specified target Dec [deg]
ra_nom	149.00807253687	Nominal RA [deg]
dec_nom	69.639080346926	Nominal Dec [deg]
roll_nom	311.12640586678	Nominal Roll [deg]
revision	2	Processing version of data
ontime	45126.700347066	Sum of GTIs [s]
livetime	44537.086785238	Livetime [s]
ontime5	45126.700347066	Sum of GTIs [s]
ontime6	45120.418426335	Sum of GTIs [s]
ontime7	45126.700347066	Sum of GTIs [s]
ontime8	45110.995804429	Sum of GTIs [s]
l2events	499514	Number of level 2 events



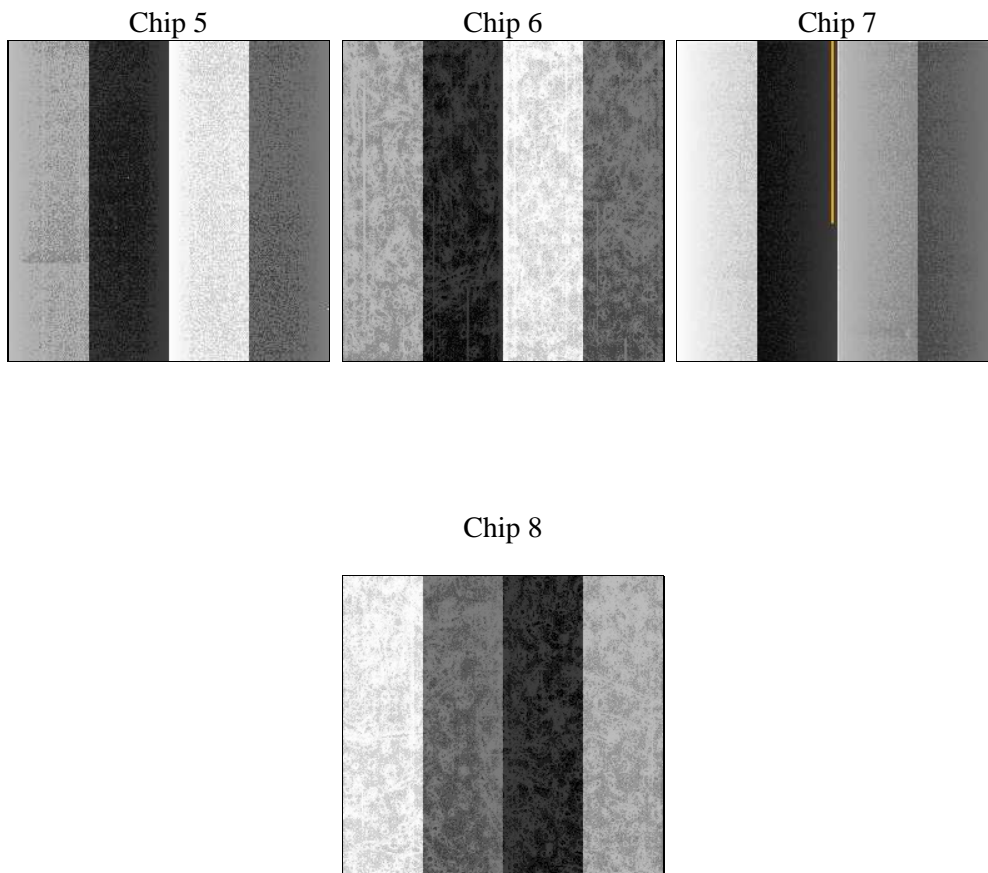
2 OBI

2.1 OBI

2.1.1 Images



2.1.2 Bias



2.1.3 Parameters

obi_num	0	Obi number	sched_exp_time	45058.000000	[s] Scheduled observation exposure time
ascdsver	8.4.5	Processing system revision	ontime	45126.700347066	Sum of GTIs [s]
caldbver	4.4.10	 	ontime5	45126.700347066	Sum of GTIs [s]
date	2012-06-10T00:24:48	Date and time of file creation	ontime6	45120.418426335	Sum of GTIs [s]
revision	2	Processing version of data	ontime7	45126.700347066	Sum of GTIs [s]
			ontime8	45110.995804429	Sum of GTIs [s]
			l1events	1422926	Number of level 1 events

2.1.4 Events

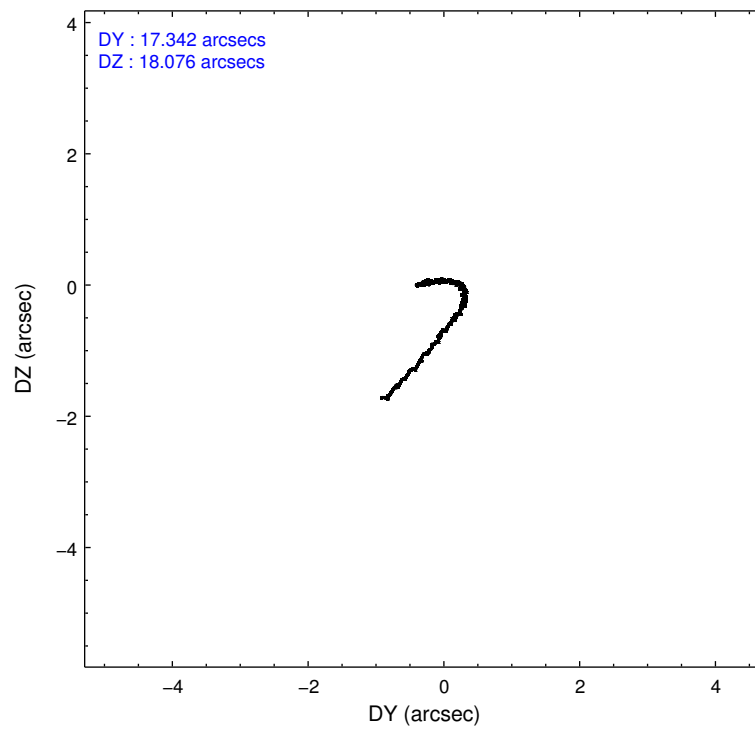
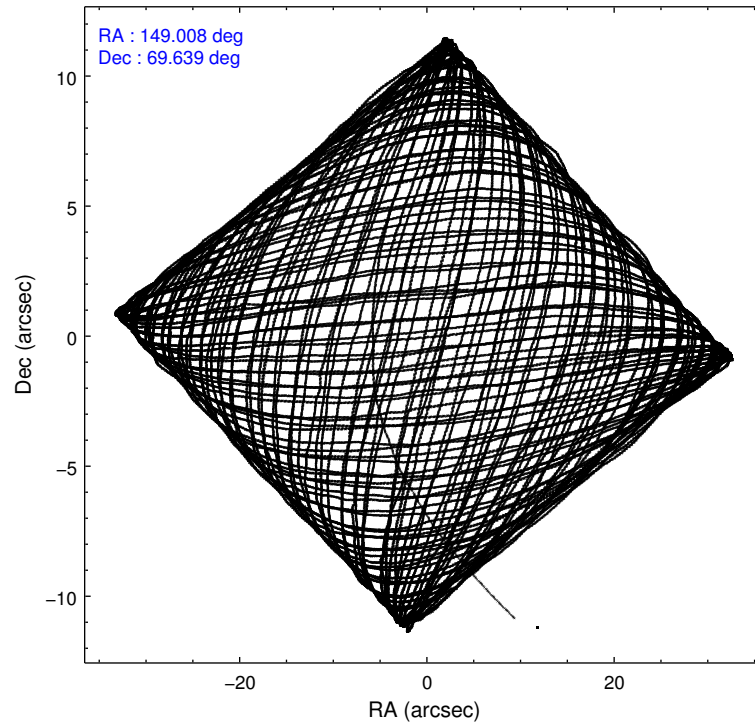
	ccd 5	ccd 6	ccd 7	ccd 8
level 1 events	301179	335108	380614	406025
rejected events	117238	303778	95780	291472
rejected %	38%	90%	25%	71%

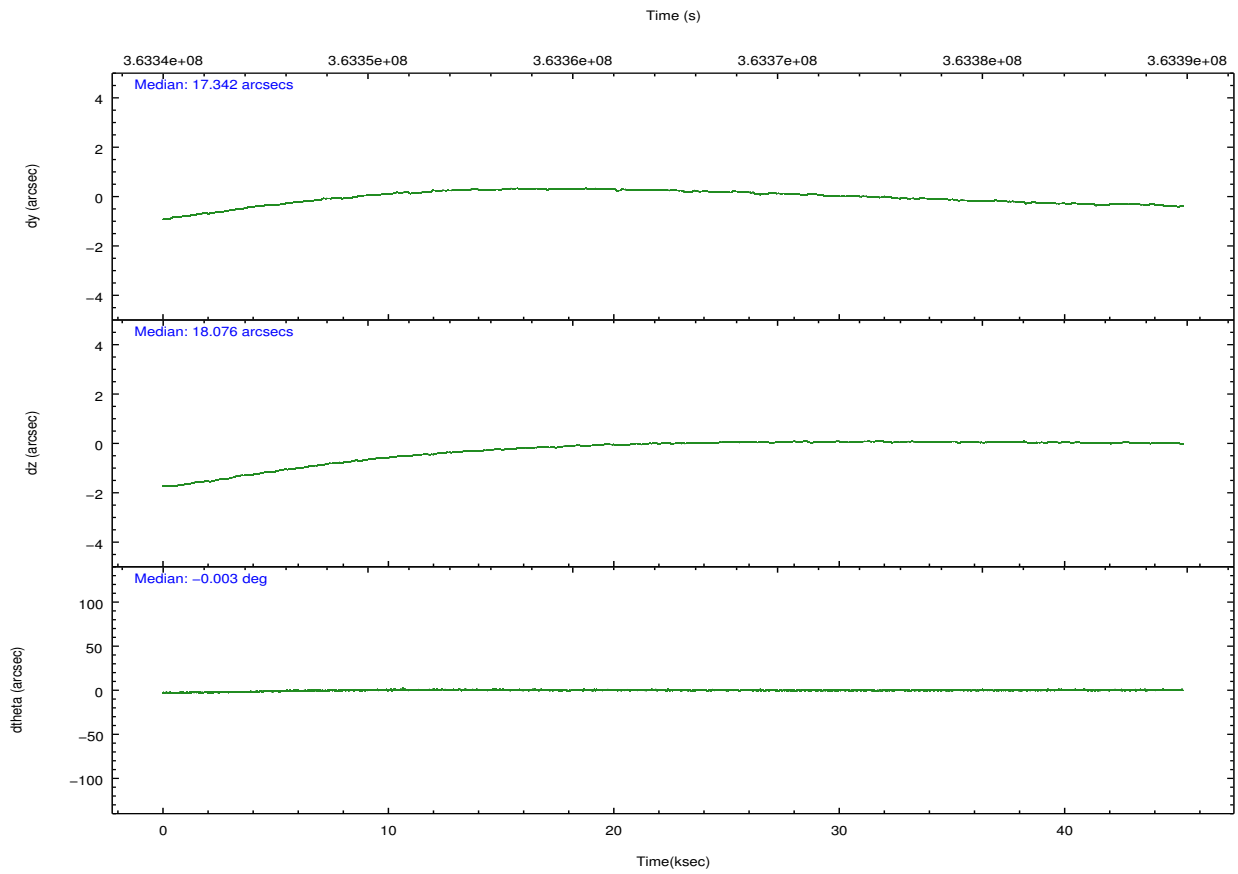
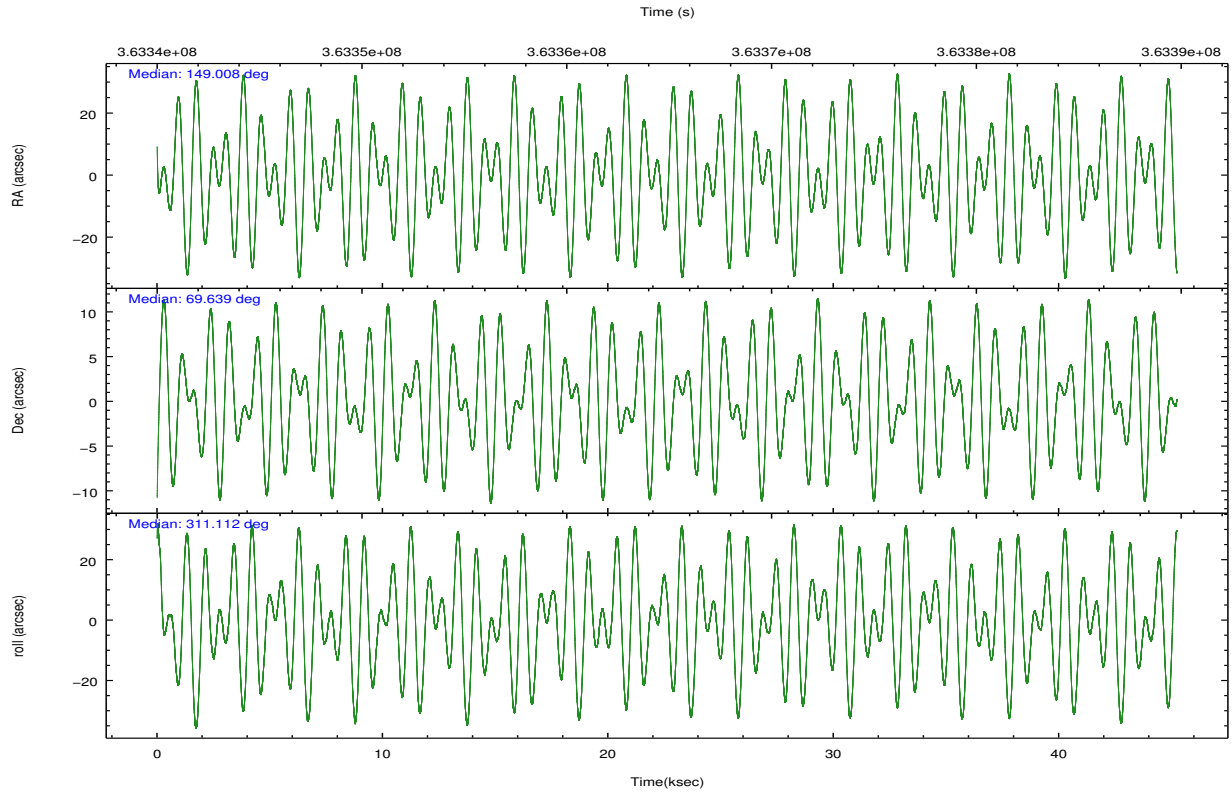
	ccd 5	ccd 6	ccd 7	ccd 8
grade 0 events	24584	13275	66675	34474
	8%	3%	17%	8%
grade 1 events	983	192	1463	413
	0%	0%	0%	0%
grade 2 events	62754	6867	73183	26748
	20%	2%	19%	6%
grade 3 events	9308	3164	30989	12505
	3%	0%	8%	3%
grade 4 events	8774	3191	31263	11643
	2%	0%	8%	2%
grade 5 events	24429	6666	24264	11779
	8%	1%	6%	2%
grade 6 events	79084	4919	83563	29529
	26%	1%	21%	7%
grade 7 events	91263	296834	69214	278934
	30%	88%	18%	68%

2.2 Compared Parameters

Parameter	Planned	Actual	Parameter	Planned	Actual
Instrument	ACIS	ACIS	Obspar format version number	7	7
Detector	ACIS-5678	ACIS-5678	Obspar file type	PREDICTED	ACTUAL
Grating	NONE	NONE	Obspar update status	NONE	UPDATED
Data mode	VFAINT	VFAINT	CCD I0 on	N	N
Observation mode	POINTING	POINTING	CCD I1 on	N	N
[deg] Pointing RA	148.933334	149.008072536871	CCD I2 on	N	N
[deg] Pointing Dec	69.647563	69.63908034692616	CCD I3 on	N	N
[deg] Pointing Roll	311.039851	311.1264058667777	CCD S0 on	N	N
[mm] SIM focus pos	-0.684267	-0.6828225247311905	CCD S1 on	O2	Y
[mm] SIM defocus	0	0.001444936568705701	CCD S2 on	Y	Y
[mm] SIM translation stage pos	-190.132523	-190.1400660498719	CCD S3 on	Y	Y
[mm] SIM translation stage offset	0	0.00754346686406393	CCD S4 on	O1	Y
[s] Observation start time (MET)	363342461.184000	363341581.01507	CCD S5 on	N	N
Observation start date	2009-07-07T08:26:35	2009-07-07T08:13:01	Number of optional ACIS chips dropped	0	0
[s] Observation end time (MET)	363387519.184000	363387653.22988	On-chip summing requested	N	N
Observation end date	2009-07-07T20:57:33	2009-07-07T21:00:53	Subarray requested	NONE	NONE
Read mode	TIMED	TIMED	Alternating exposures requested	N	N
			[s] Primary exposure time	0.000000	3.1

2.3 Aspect



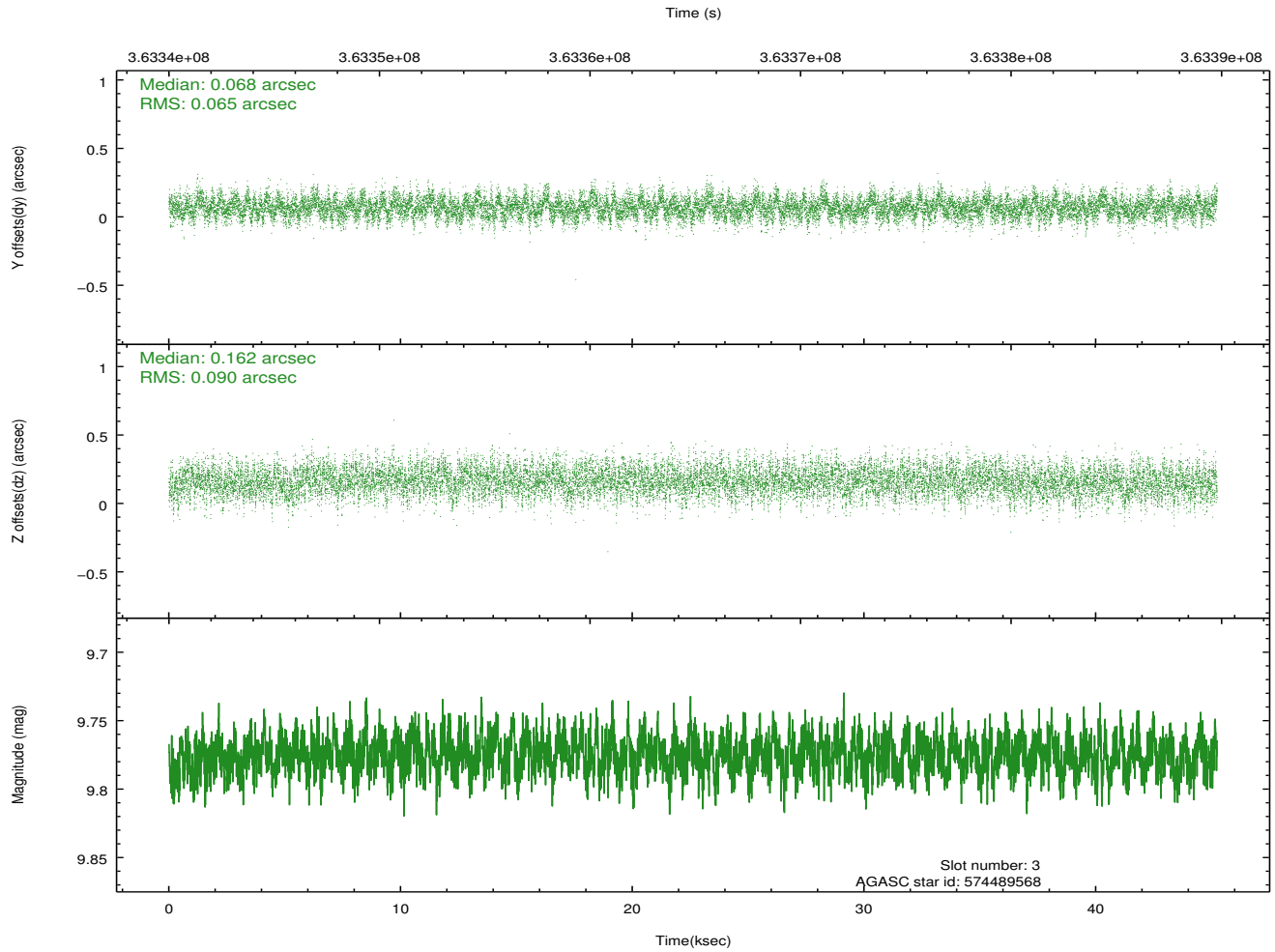
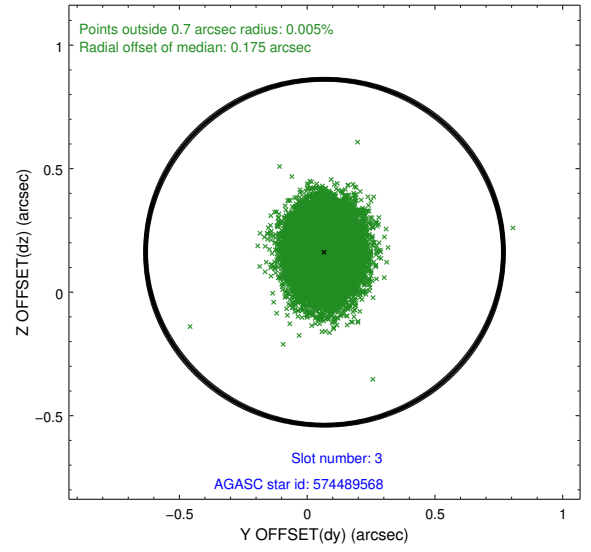
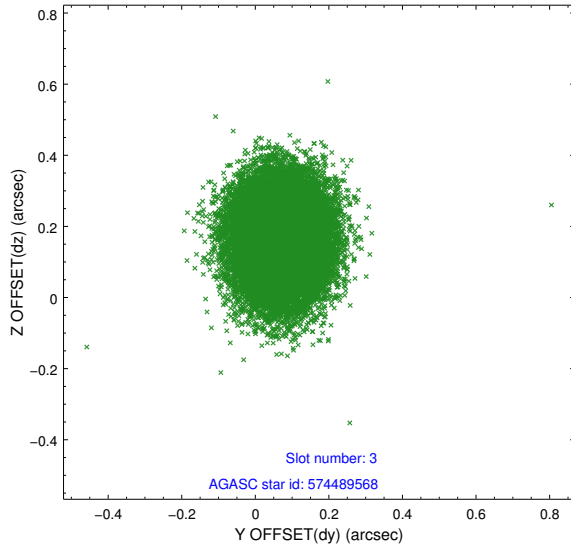


Slot Statistics

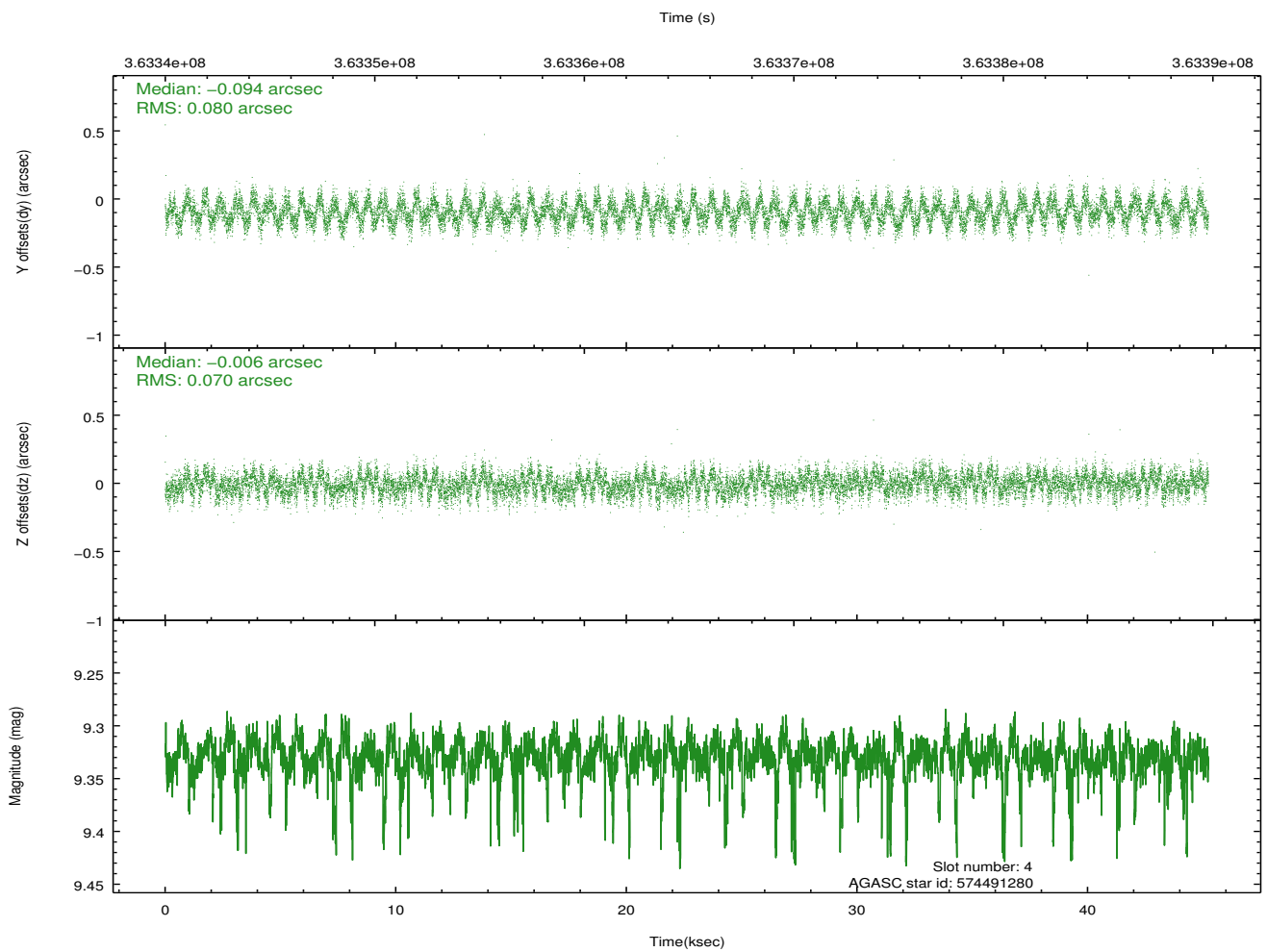
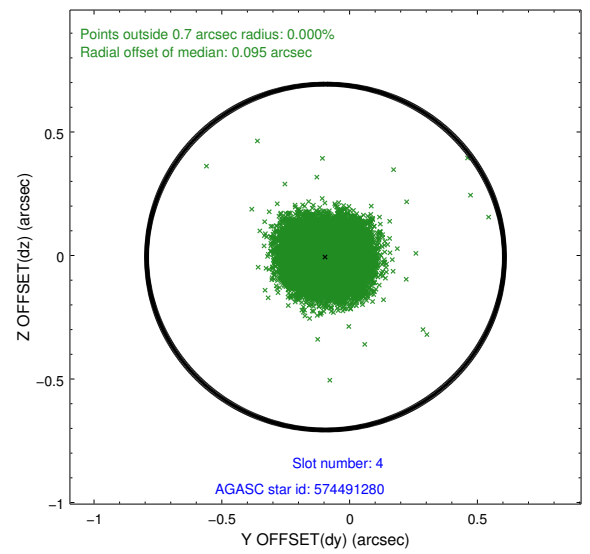
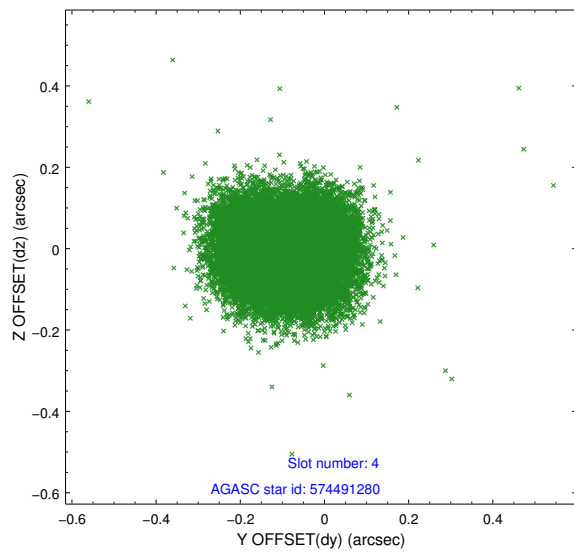
slot	status	id	mag	n_pts	med_dy	med_dz	dr1	dr2	ra	dec	mean_y	mean_z
0	FID	ACIS-S-2	6.87	11032	-0.048	-0.027	0.012	0.027	0.000000	0.000000	-770.41	-1739.25
1	FID	ACIS-S-4	6.95	11030	0.146	0.031	0.009	0.018	0.000000	0.000000	2143.10	169.24
2	FID	ACIS-S-5	6.99	11032	-0.129	0.006	0.013	0.030	0.000000	0.000000	-1823.30	162.95
3	GUIDE	574489568	9.78	22040	0.068	0.162	0.118	0.191	147.223974	69.438157	-872.07	-2104.66
4	GUIDE	574491280	9.33	21976	-0.094	-0.006	0.115	0.177	148.611567	69.450135	268.73	-773.69
5	GUIDE	574491872	9.27	22041	0.059	0.116	0.086	0.139	147.207613	69.765453	-1750.71	-1324.06
6	GUIDE	574886464	9.80	22034	0.036	-0.241	0.128	0.213	149.898674	70.203982	-745.33	2209.05
7	GUIDE	574886496	8.49	22056	-0.068	-0.033	0.094	0.149	148.945563	70.041136	-1058.94	942.00

2.4 Star Slots

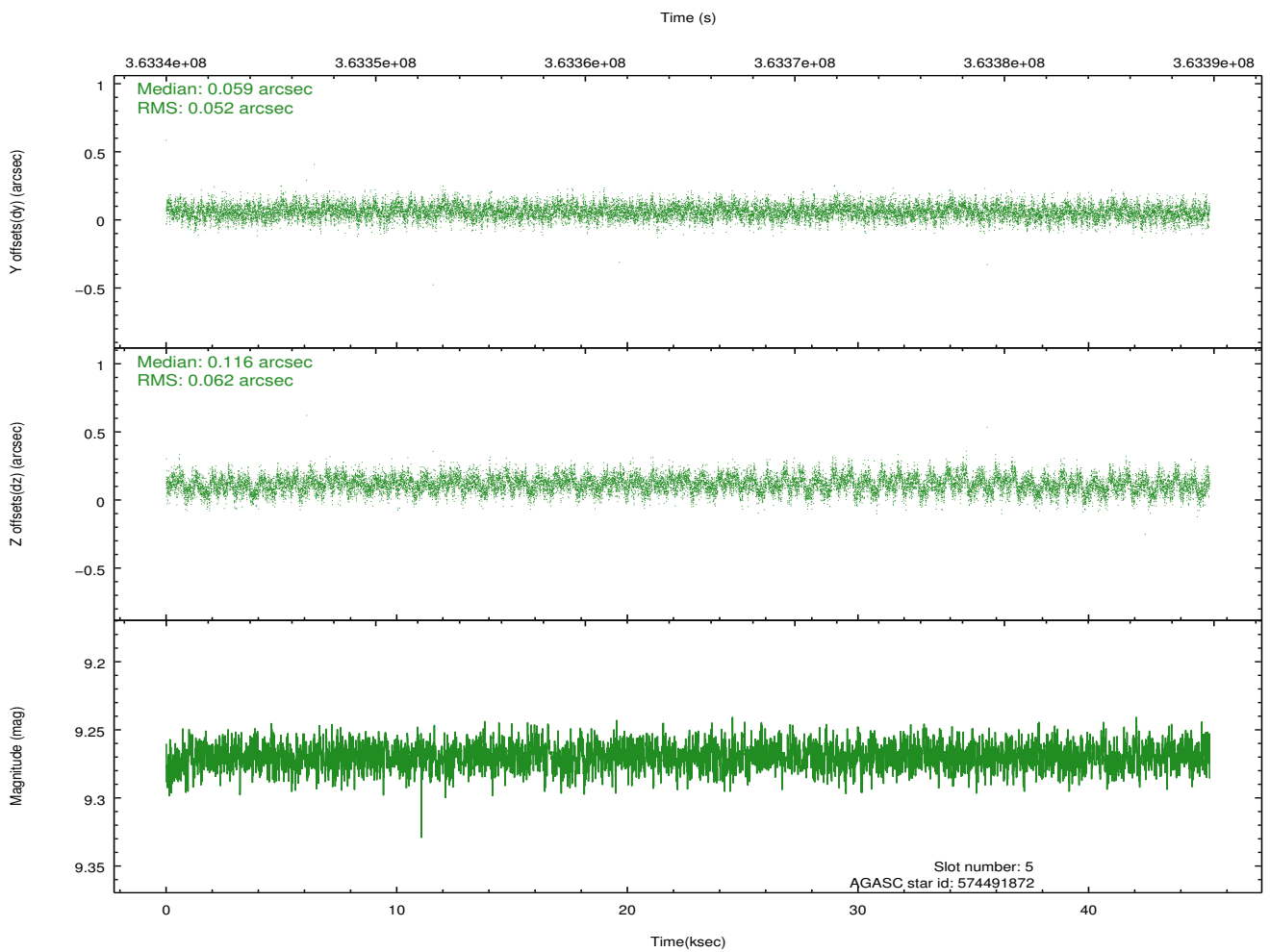
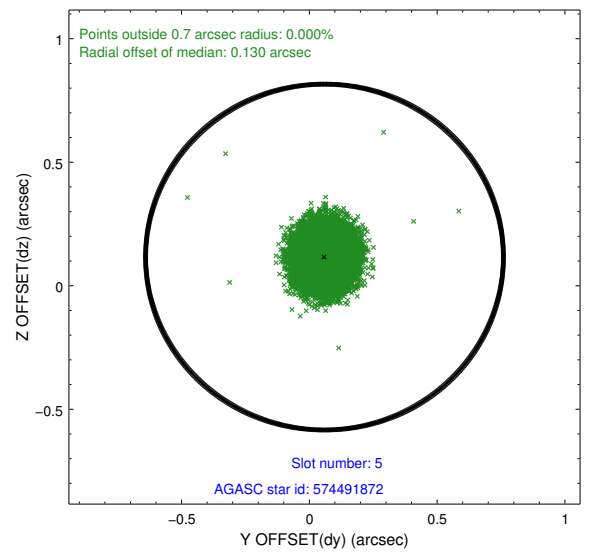
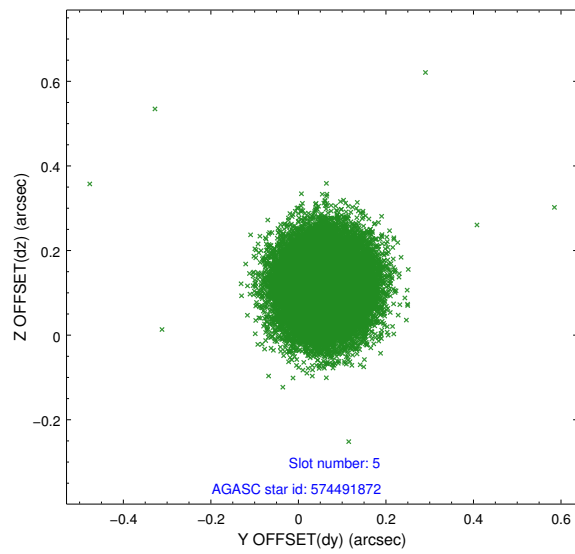
2.4.1 Slot 3



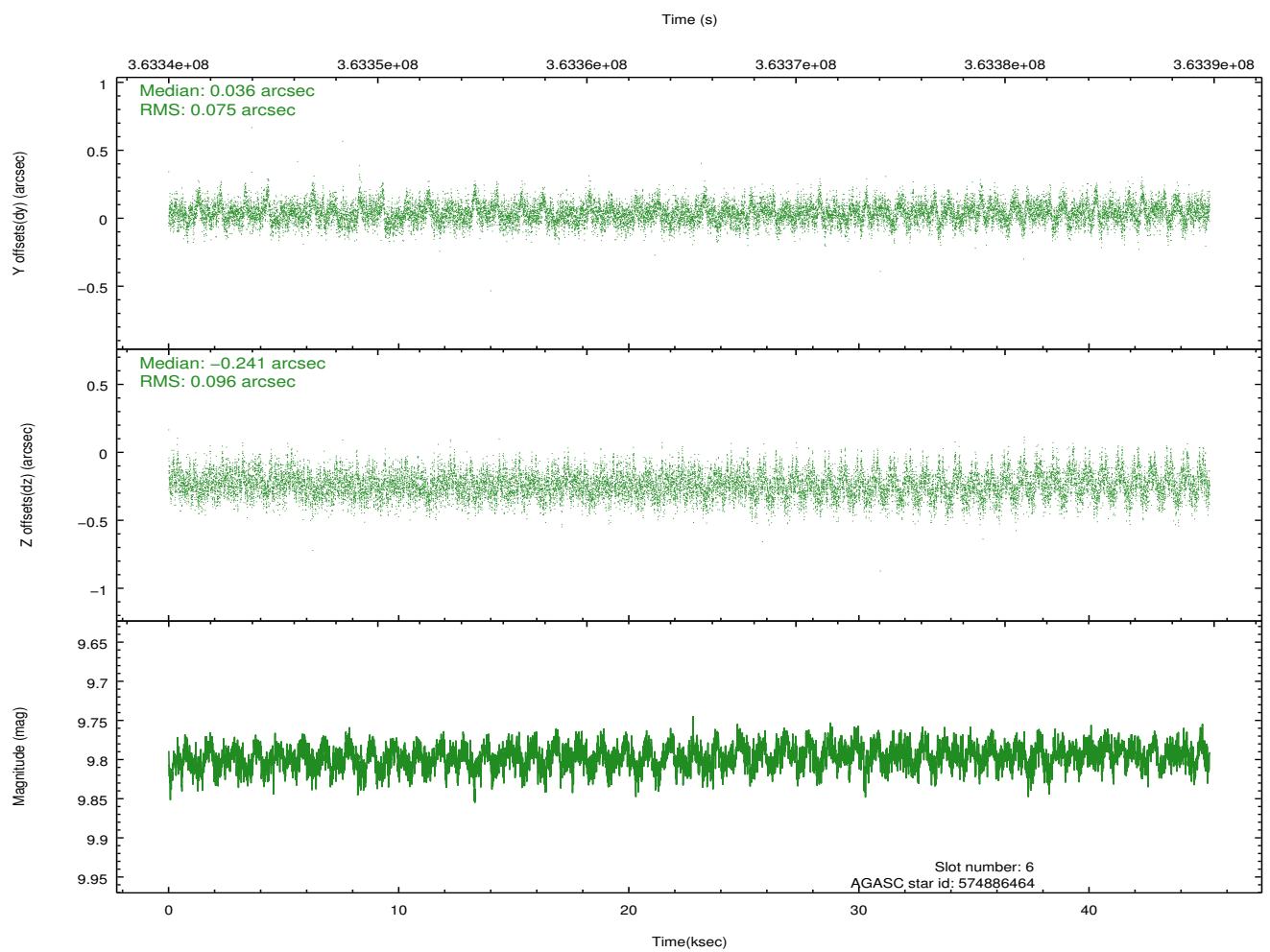
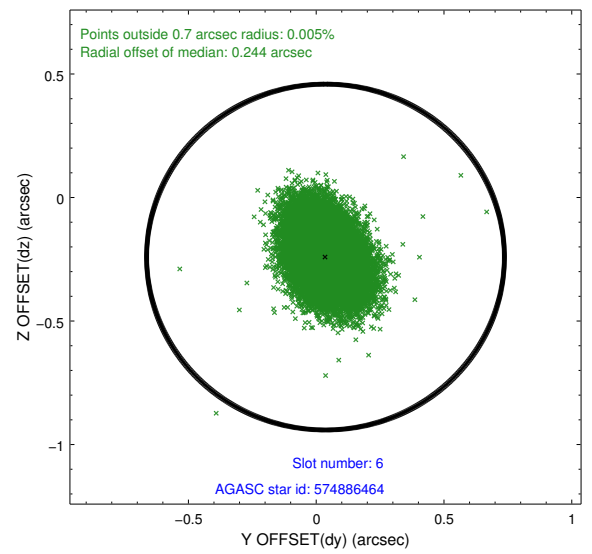
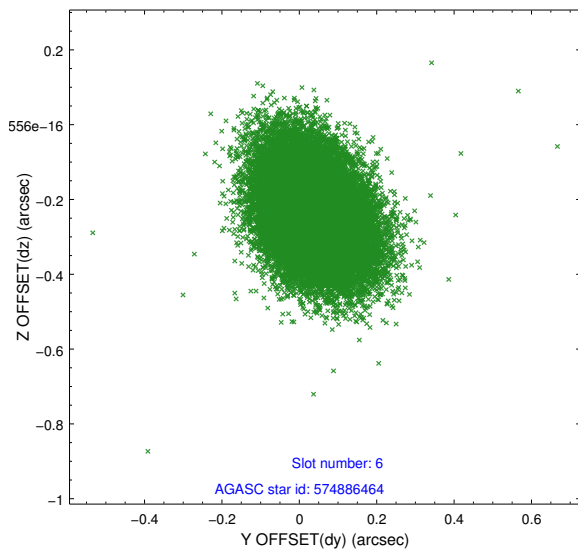
2.4.2 Slot 4



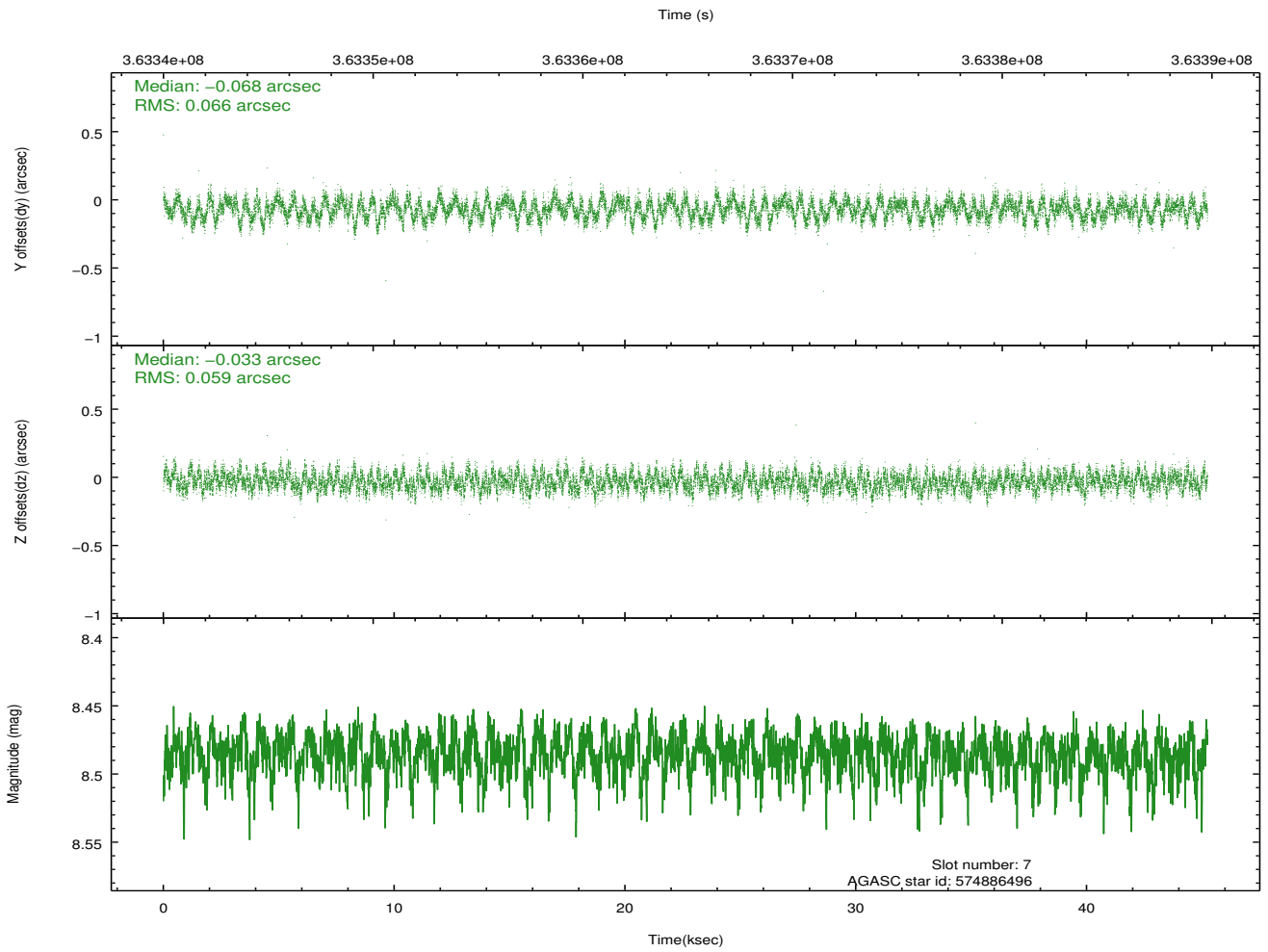
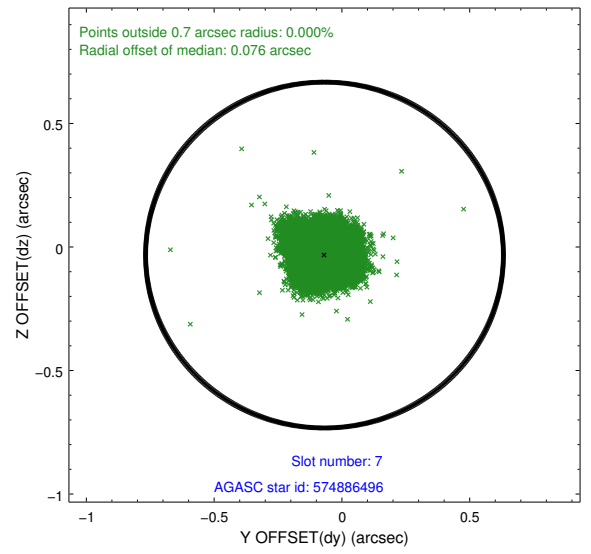
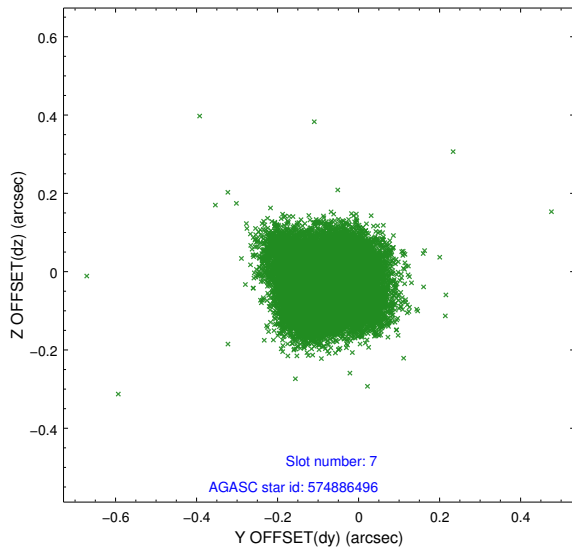
2.4.3 Slot 5



2.4.4 Slot 6

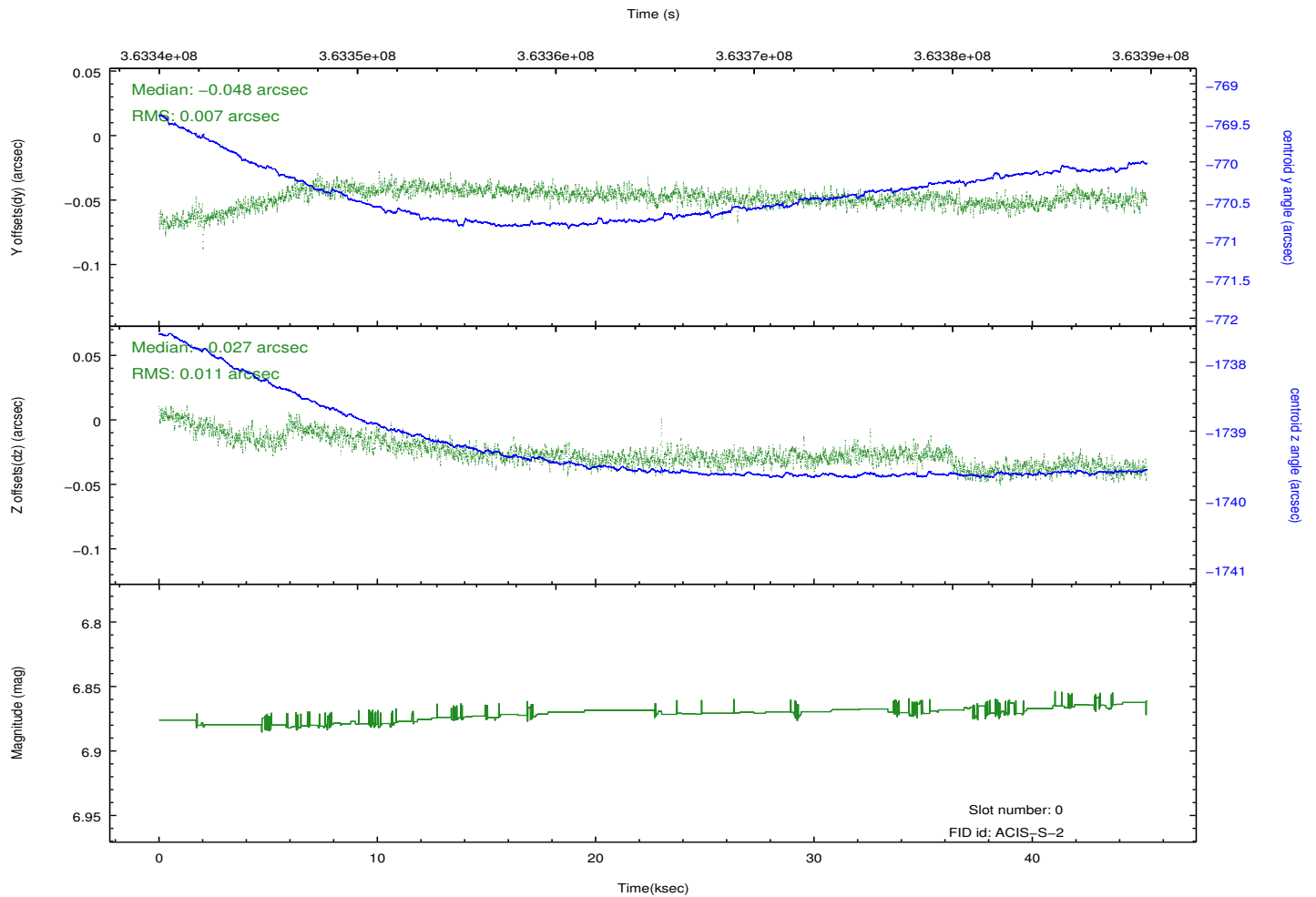
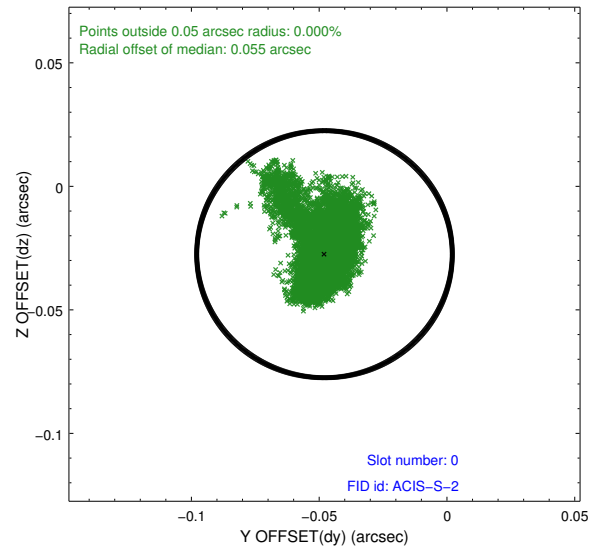
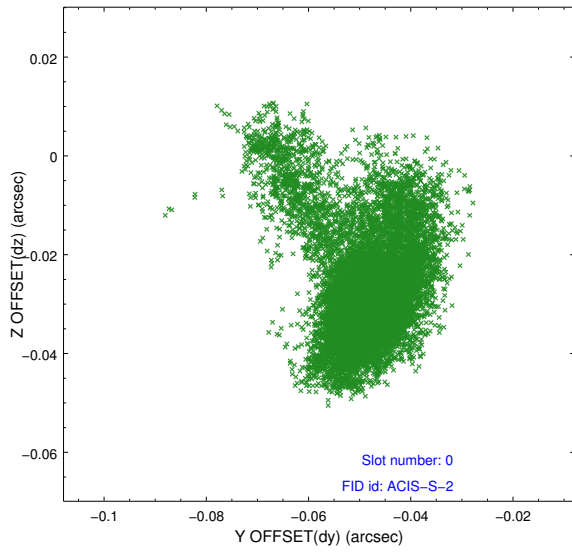


2.4.5 Slot 7

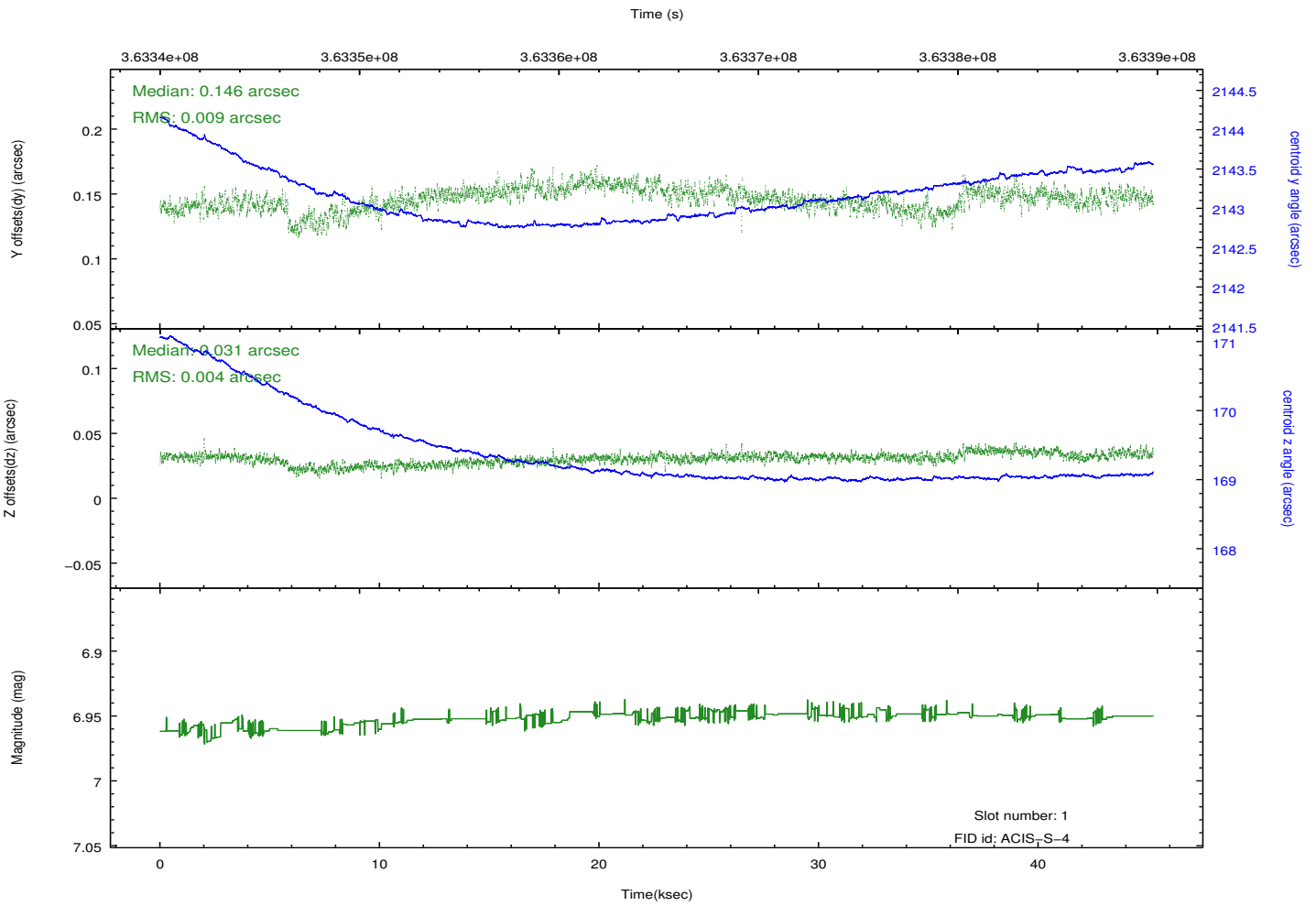
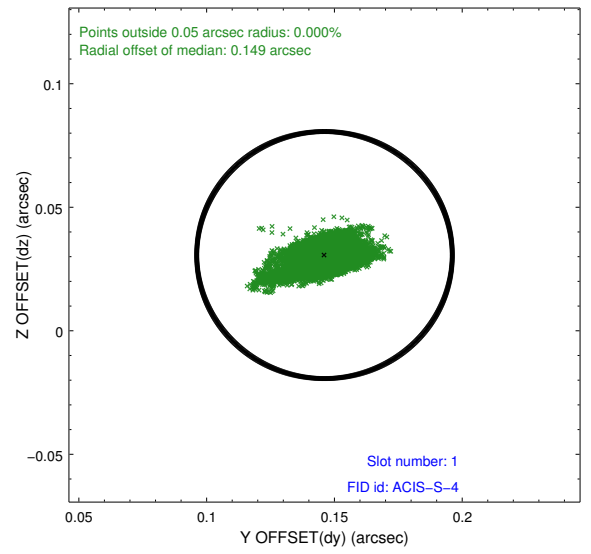
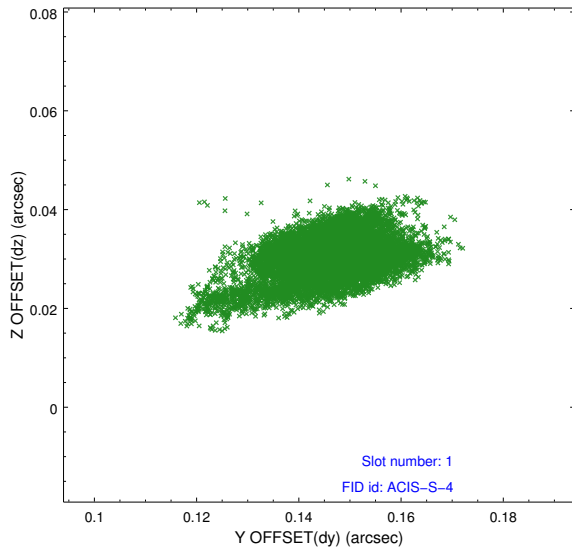


2.5 FID Slots

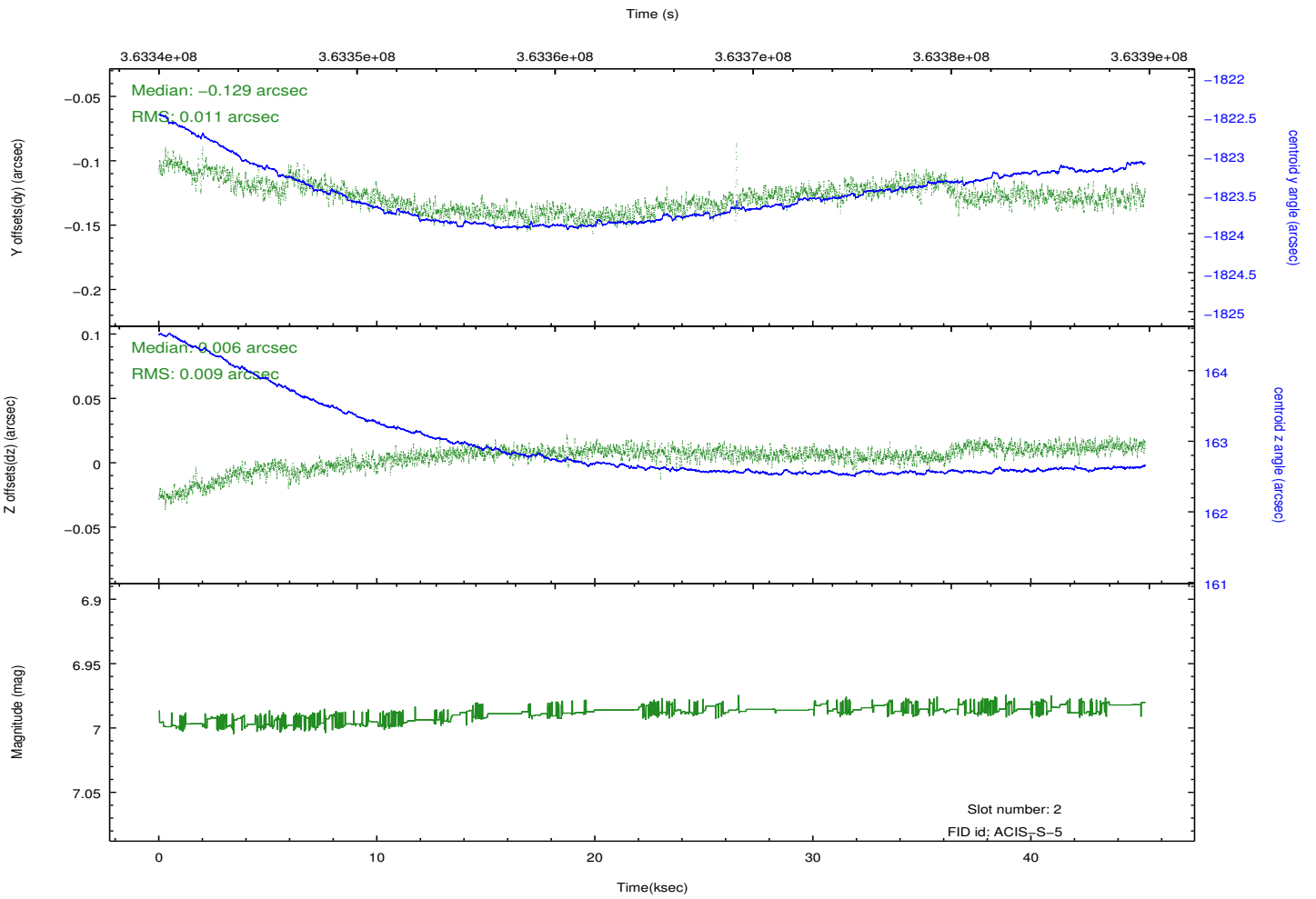
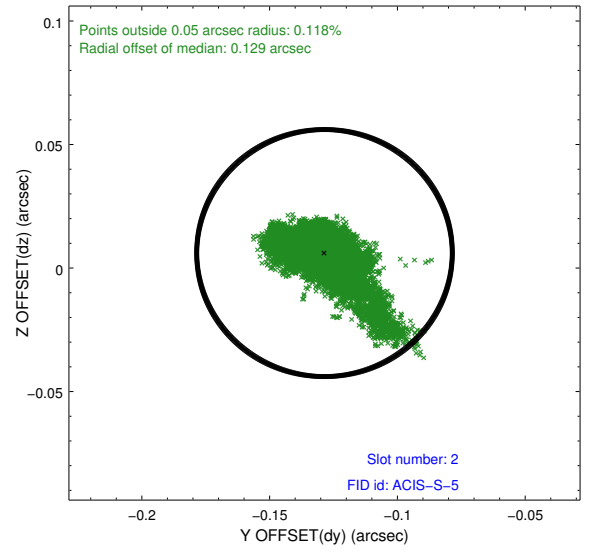
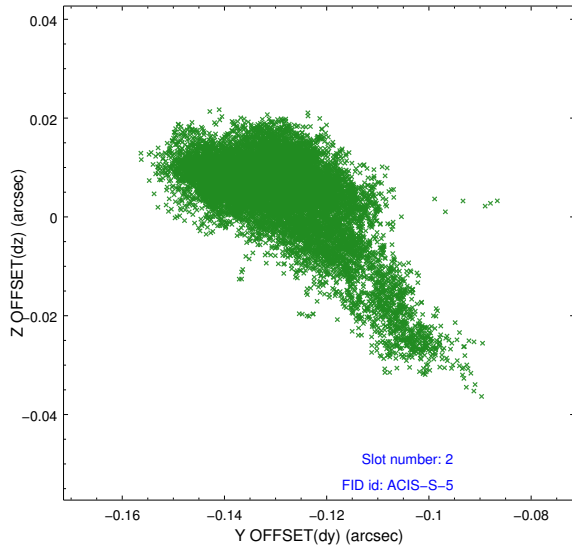
2.5.1 Slot 0



2.5.2 Slot 1



2.5.3 Slot 2



A Summary

A.1 Status

V&V Scientist	Beth Sundheim
V&V Date (YYYY-MM-DD)	2012.06.13
V&V Edition	1
V&V Disposition and Status	OK
V&V Charge Time	45.1267003

A.2 Comments