

# V&V Reference Report

## L2 ASCDS Version : 8.4.5

Observation 11105 - L2 Version 2  
Chandra X-Ray Center

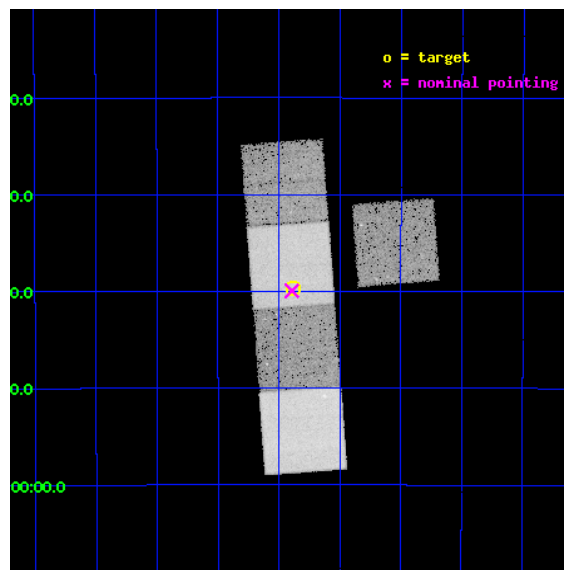
L2 Processing Date : Jun 29 2012

## Contents

<b>1</b>	<b>Front</b>	<b>2</b>
<b>2</b>	<b>OBI</b>	<b>3</b>
2.1	OBI . . . . .	3
2.1.1	Images . . . . .	3
2.1.2	Bias . . . . .	3
2.1.3	Parameters . . . . .	4
2.1.4	Events . . . . .	4
2.2	Compared Parameters . . . . .	5
2.3	Aspect . . . . .	6
2.4	Star Slots . . . . .	9
2.4.1	Slot 3 . . . . .	9
2.4.2	Slot 4 . . . . .	10
2.4.3	Slot 5 . . . . .	11
2.4.4	Slot 6 . . . . .	12
2.4.5	Slot 7 . . . . .	13
2.5	FID Slots . . . . .	14
2.5.1	Slot 0 . . . . .	14
2.5.2	Slot 1 . . . . .	15
2.5.3	Slot 2 . . . . .	16
<b>A</b>	<b>Summary</b>	<b>17</b>
A.1	Status . . . . .	17
A.2	Comments . . . . .	17

# 1 Front

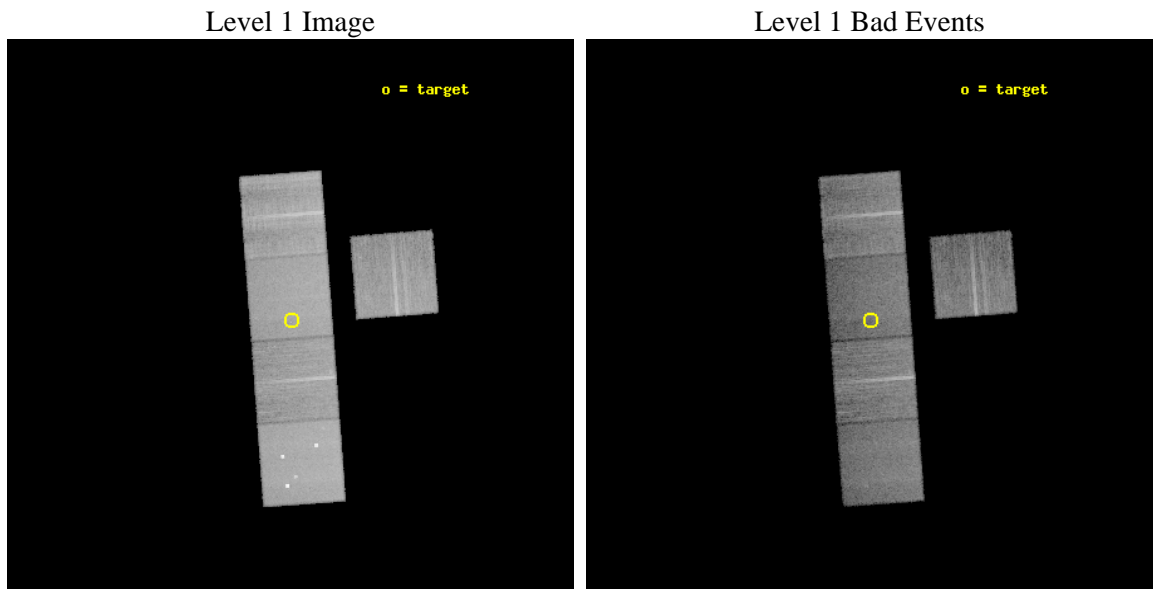
seq_num	501190	Sequence number
obs_id	11105	Observation id
title	Rapid Observations of Short Gamma-Ray Bursts: Accurate Positions Hold the Key to the Progenitor Population	Proposal title
observer	Prof. Edo Berger	Principal investigator
object	GRB100628	Source name
dtcycle	0	&#160
cycle	P	events from which exps? Prim/Second/Both
ra_targ	225.970625	Observer's specified target RA [deg]
dec_targ	-31.661583	Observer's specified target Dec [deg]
ra_nom	225.97326573042	Nominal RA [deg]
dec_nom	-31.665869890997	Nominal Dec [deg]
roll_nom	265.69444751706	Nominal Roll [deg]
revision	2	Processing version of data
ontime	20036.987144709	Sum of GTIs [s]
livetime	19775.189156648	Livetime [s]
ontime3	20030.581954002	Sum of GTIs [s]
ontime5	20036.946104705	Sum of GTIs [s]
ontime6	20033.76403439	Sum of GTIs [s]
ontime7	20036.987144709	Sum of GTIs [s]
ontime8	20033.68194437	Sum of GTIs [s]
l2events	232840	Number of level 2 events



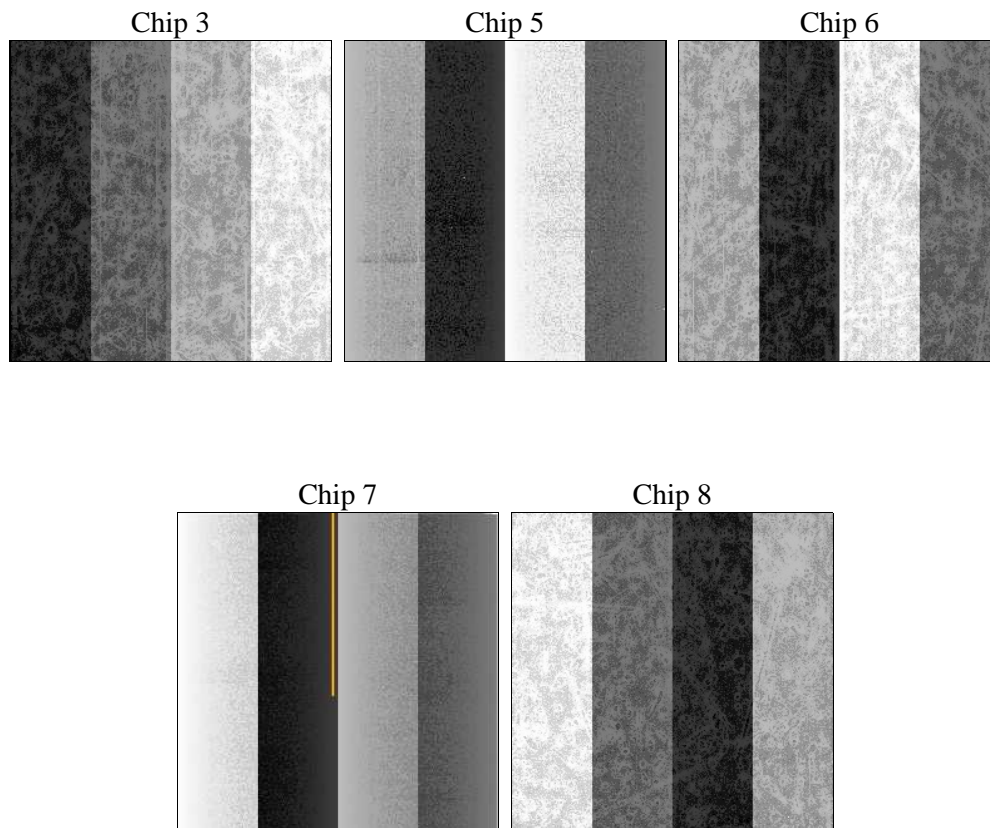
## 2 OBI

### 2.1 OBI

#### 2.1.1 Images



#### 2.1.2 Bias



### 2.1.3 Parameters

obi_num	0	Obi number	sched_exp_time	20000.000000	[s] Scheduled observation exposure time
ascdsver	8.4.5	Processing system revision	ontime	20036.987144709	Sum of GTIs [s]
caldsver	4.5.0	&#160	ontime3	20030.581954002	Sum of GTIs [s]
date	2012-06-29T10:31:56	Date and time of file creation	ontime5	20036.946104705	Sum of GTIs [s]
revision	2	Processing version of data	ontime6	20033.76403439	Sum of GTIs [s]
			ontime7	20036.987144709	Sum of GTIs [s]
			ontime8	20033.68194437	Sum of GTIs [s]
			l1events	906119	Number of level 1 events

### 2.1.4 Events

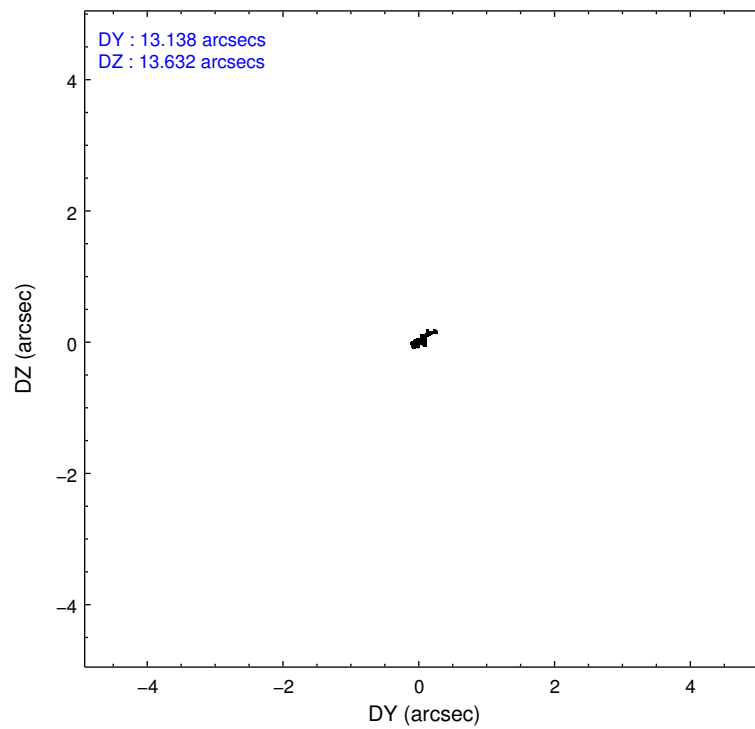
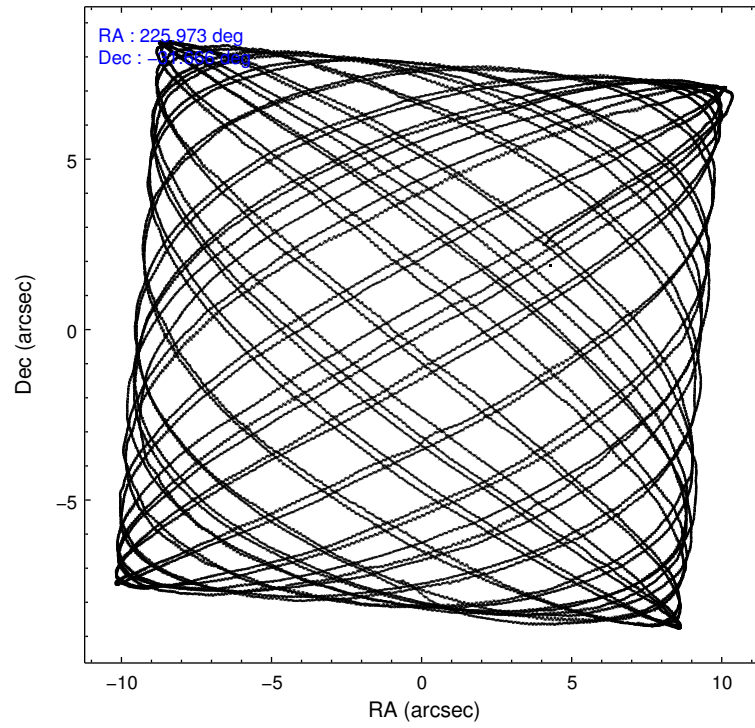
	ccd 3	ccd 5	ccd 6	ccd 7	ccd 8
level 1 events	143314	234944	151490	184898	191473
rejected events	127858	113475	133969	101238	141924
rejected %	89%	48%	88%	54%	74%

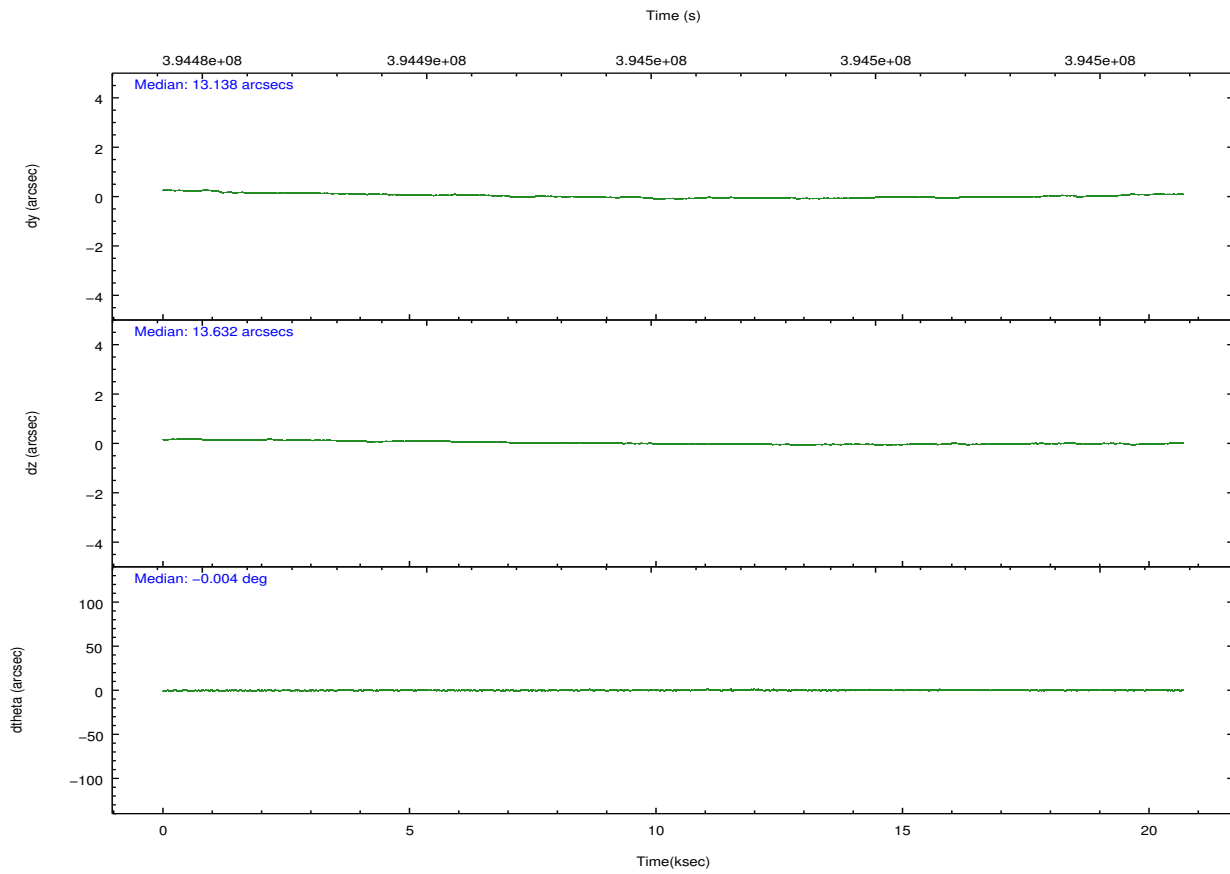
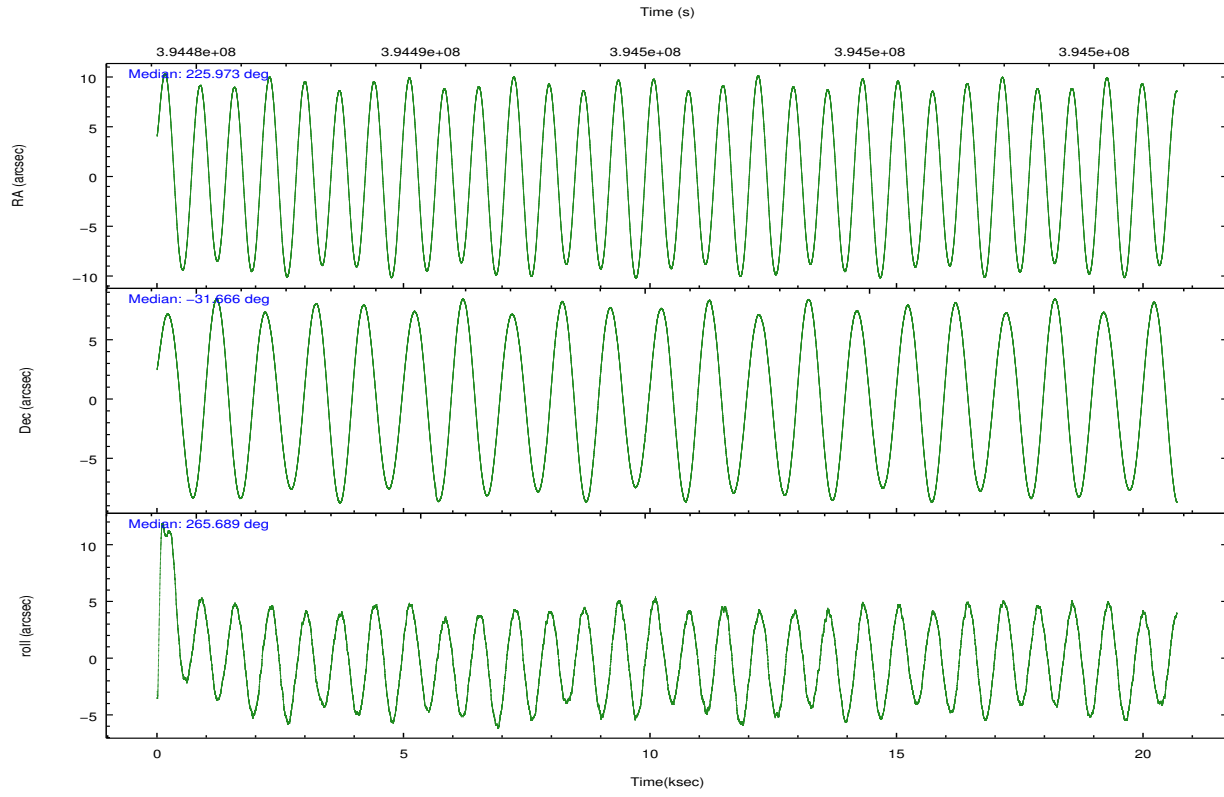
	ccd 3	ccd 5	ccd 6	ccd 7	ccd 8
grade 0 events	5562	17559	6395	8007	14613
	3%	7%	4%	4%	7%
grade 1 events	94	473	91	239	151
	0%	0%	0%	0%	0%
grade 2 events	3409	36707	3923	17139	11625
	2%	15%	2%	9%	6%
grade 3 events	1690	4357	1787	7586	5314
	1%	1%	1%	4%	2%
grade 4 events	1720	4131	1808	7346	4965
	1%	1%	1%	3%	2%
grade 5 events	6767	16957	6727	18970	9812
	4%	7%	4%	10%	5%
grade 6 events	3078	58750	3612	43620	13041
	2%	25%	2%	23%	6%
grade 7 events	120994	96010	127147	81991	131952
	84%	40%	83%	44%	68%

## 2.2 Compared Parameters

Parameter	Planned	Actual	Parameter	Planned	Actual
Instrument	ACIS	ACIS	Obspar format version number	7	7
Detector	ACIS-35678	ACIS-35678	Obspar file type	PREDICTED	ACTUAL
Grating	NONE	NONE	Obspar update status	NONE	UPDATED
Data mode	VFAINT	VFAINT	CCD I0 on	N	N
Observation mode	POINTING	POINTING	CCD I1 on	N	N
[deg] Pointing RA	225.958925	225.9732657304176	CCD I2 on	N	N
[deg] Pointing Dec	-31.641419	-31.66586989099716	CCD I3 on	O1	Y
[deg] Pointing Roll	265.530299	265.6944475170636	CCD S0 on	N	N
[mm] SIM focus pos	-0.684267	-0.6828225247311905	CCD S1 on	Y	Y
[mm] SIM defocus	0	0.001444936568705701	CCD S2 on	Y	Y
[mm] SIM translation stage pos	-190.132523	-190.1425803651734	CCD S3 on	Y	Y
[mm] SIM translation stage offset	0	0.01005778216563158	CCD S4 on	Y	Y
[s] Observation start time (MET)	394485839.184000	394484659.839	CCD S5 on	N	N
Observation start date	2010-07-02T19:22:53	2010-07-02T19:04:19	Number of optional ACIS chips dropped	0	0
[s] Observation end time (MET)	394505839.184000	394506938.21514	On-chip summing requested	N	N
Observation end date	2010-07-03T00:56:13	2010-07-03T01:15:38	Subarray requested	NONE	NONE
Read mode	TIMED	TIMED	Alternating exposures requested	N	N
			[s] Primary exposure time	0.000000	3.1

## 2.3 Aspect



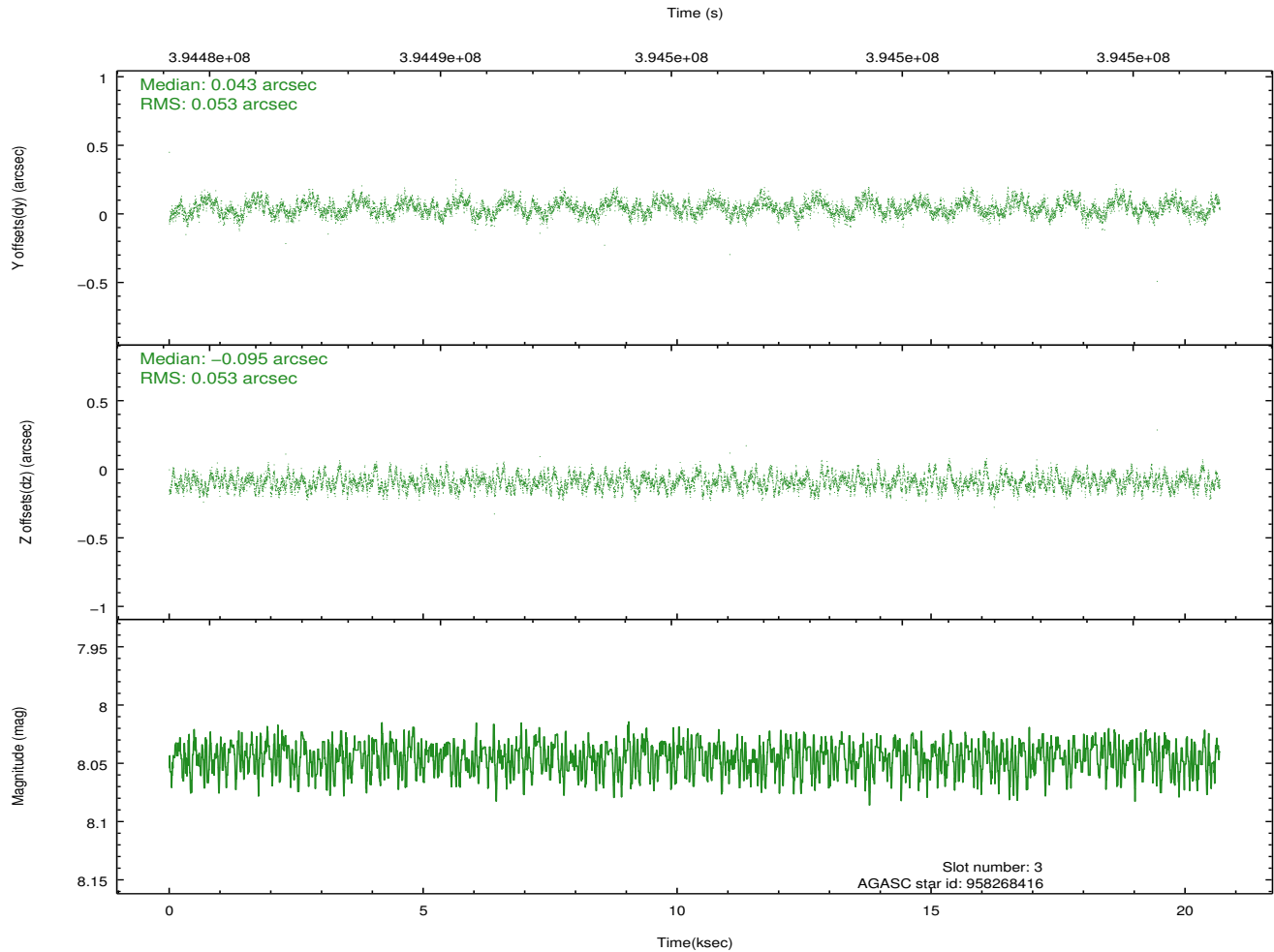
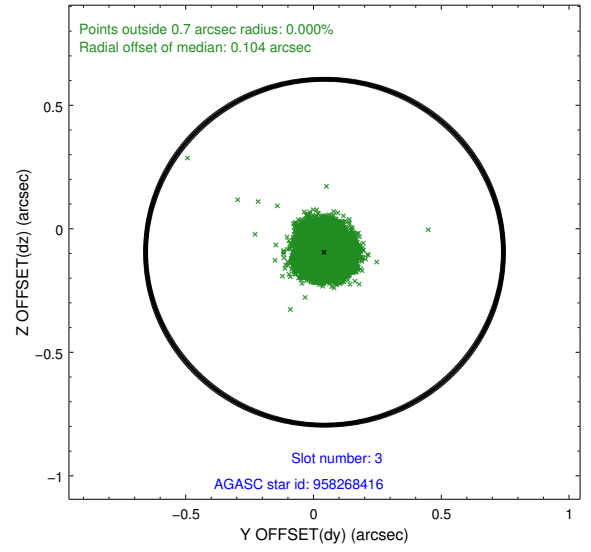
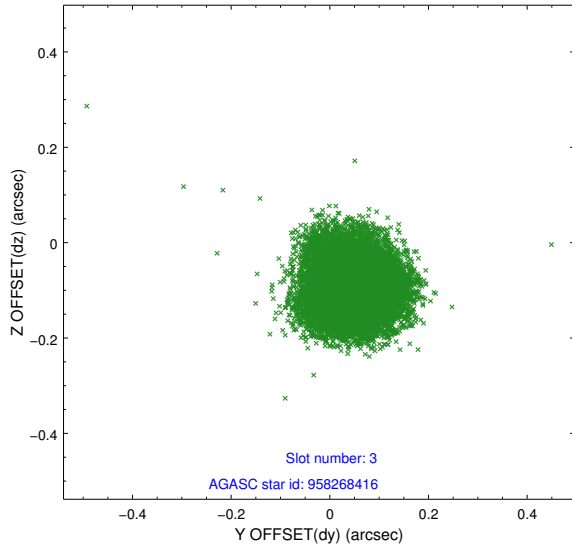


### Slot Statistics

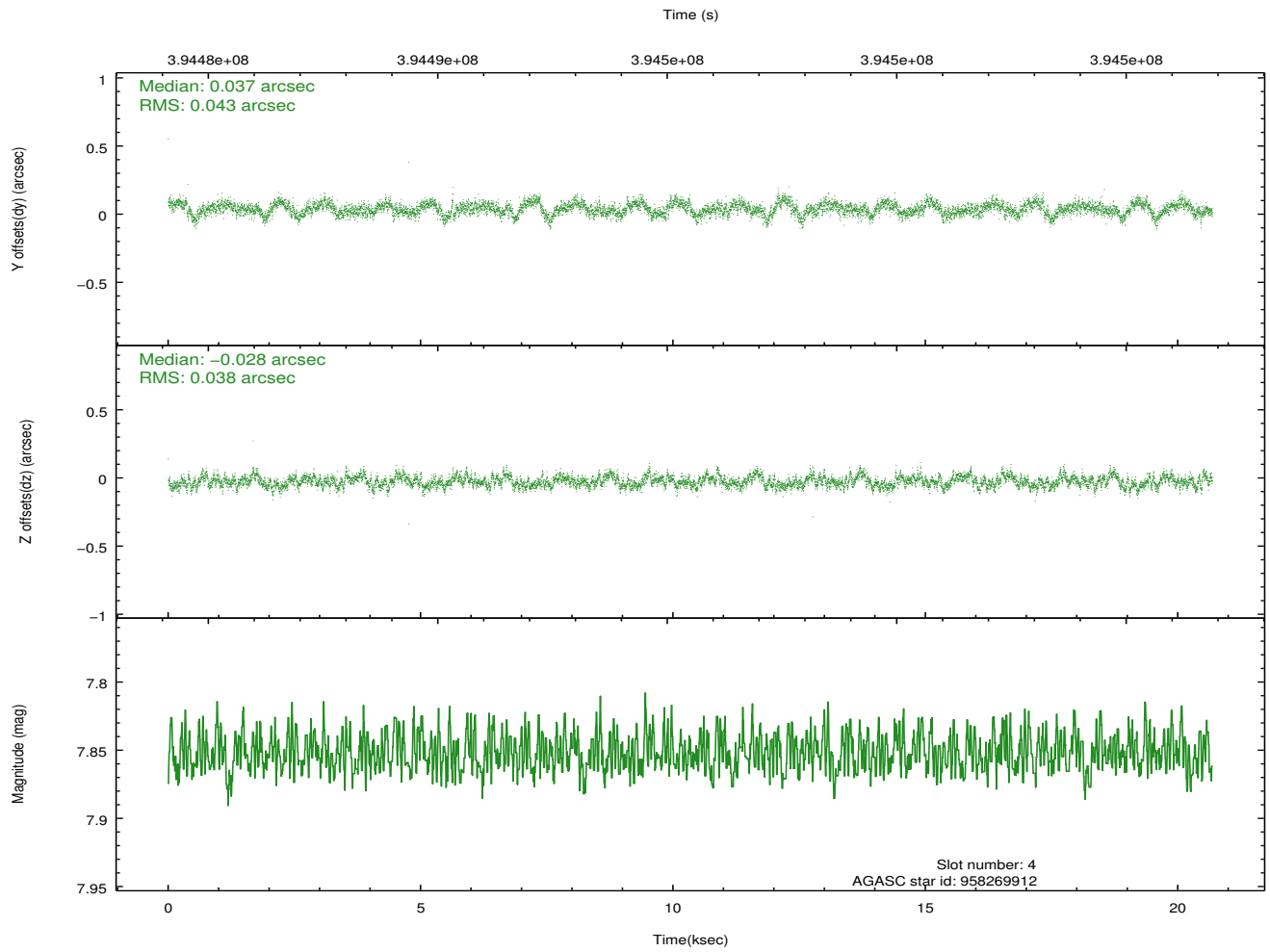
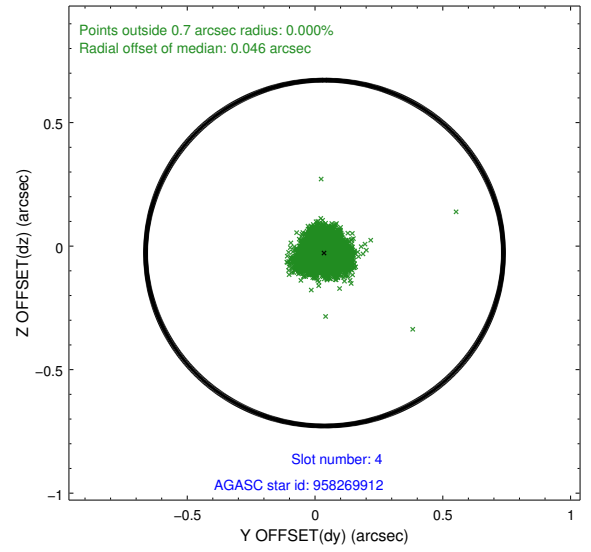
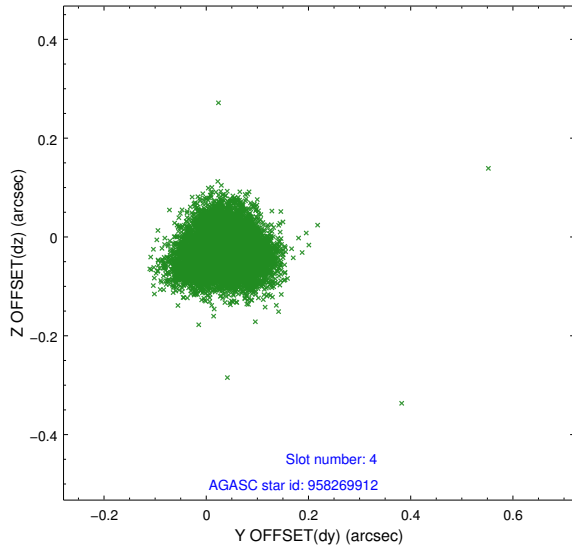
slot	status	id	mag	n_pts	med_dy	med_dz	dr1	dr2	ra	dec	mean_y	mean_z
0	FID	ACIS-S-2	6.98	5045	-0.029	-0.052	0.009	0.016	0.000000	0.000000	-766.12	-1735.00
1	FID	ACIS-S-4	7.07	5045	0.157	0.028	0.011	0.024	0.000000	0.000000	2147.27	173.38
2	FID	ACIS-S-5	7.10	5044	-0.161	0.032	0.008	0.015	0.000000	0.000000	-1818.86	167.26
3	GUIDE	958268416	8.04	10088	0.043	-0.095	0.082	0.124	225.452857	-31.544029	-223.89	-1575.21
4	GUIDE	958269912	7.85	10086	0.037	-0.028	0.060	0.097	225.559711	-31.591502	-80.75	-1234.94
5	GUIDE	958270784	8.10	10090	-0.103	0.204	0.065	0.102	225.883042	-31.376227	-932.87	-307.04
6	GUIDE	958792392	8.77	10084	0.112	-0.139	0.071	0.116	226.044610	-31.936841	1040.66	343.74
7	GUIDE	958793280	8.79	10079	-0.091	0.054	0.072	0.116	226.585353	-32.062270	1367.28	2024.28

## 2.4 Star Slots

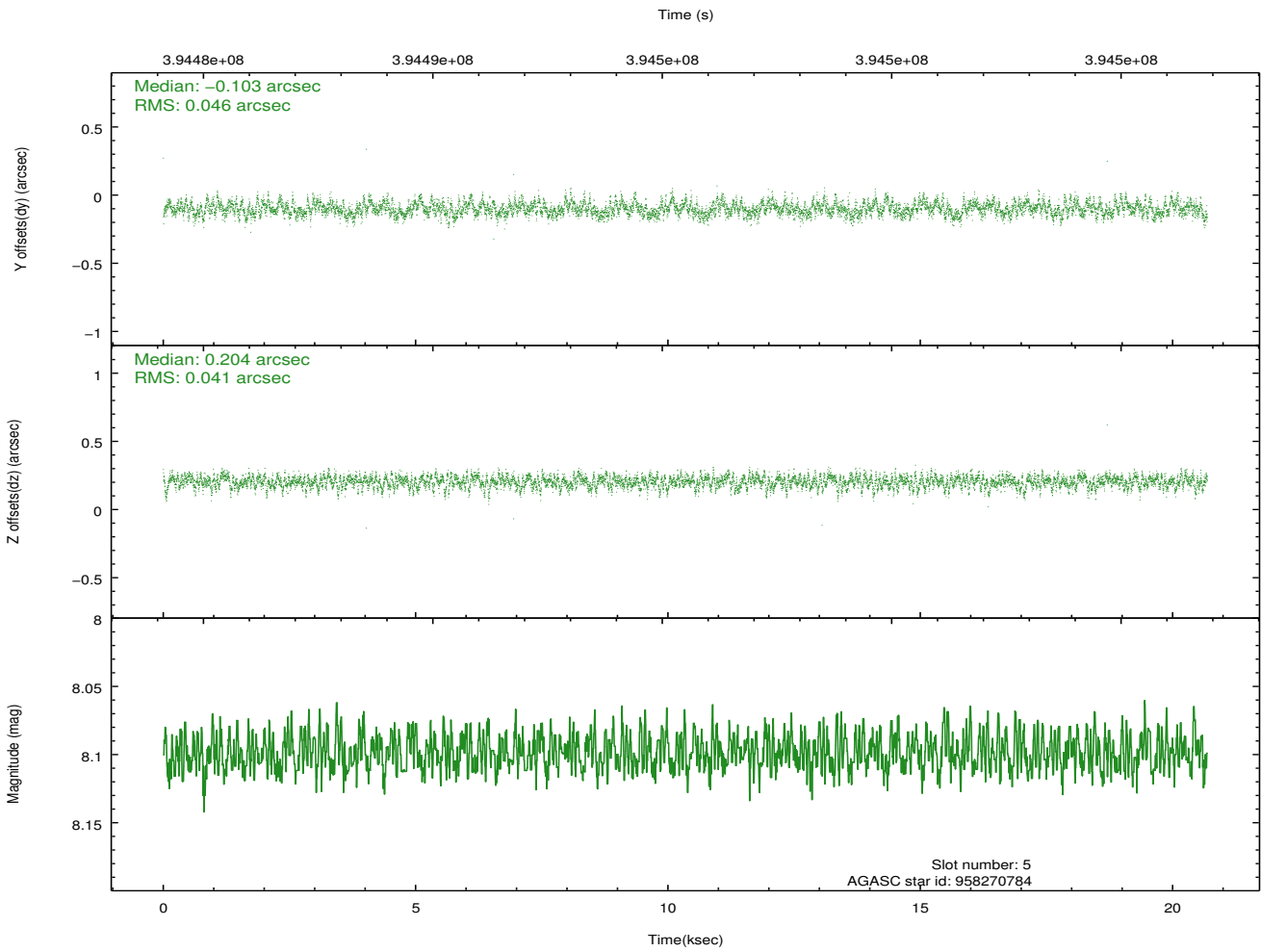
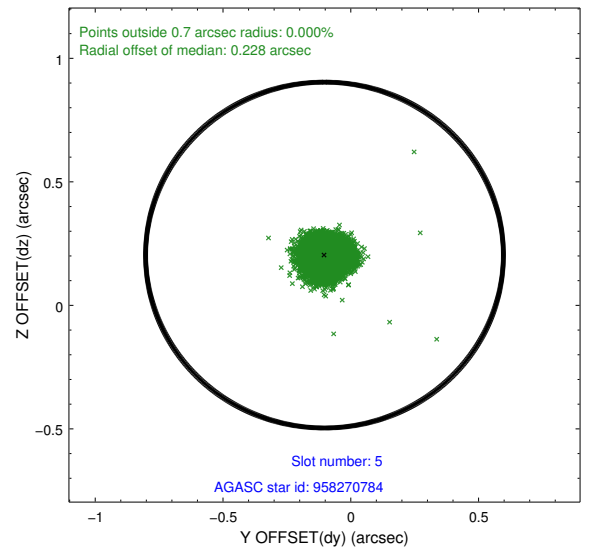
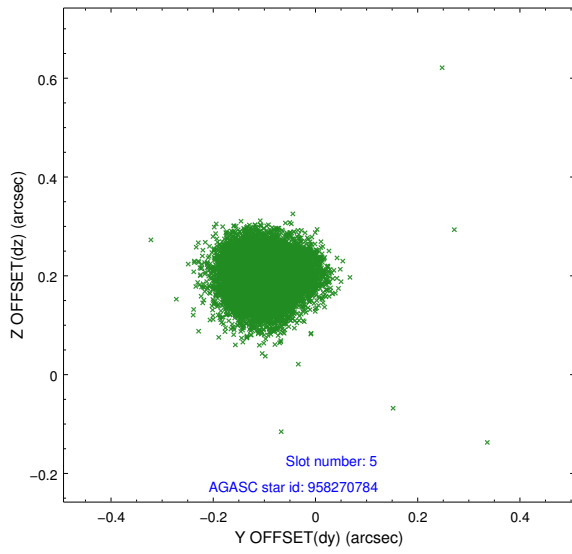
### 2.4.1 Slot 3



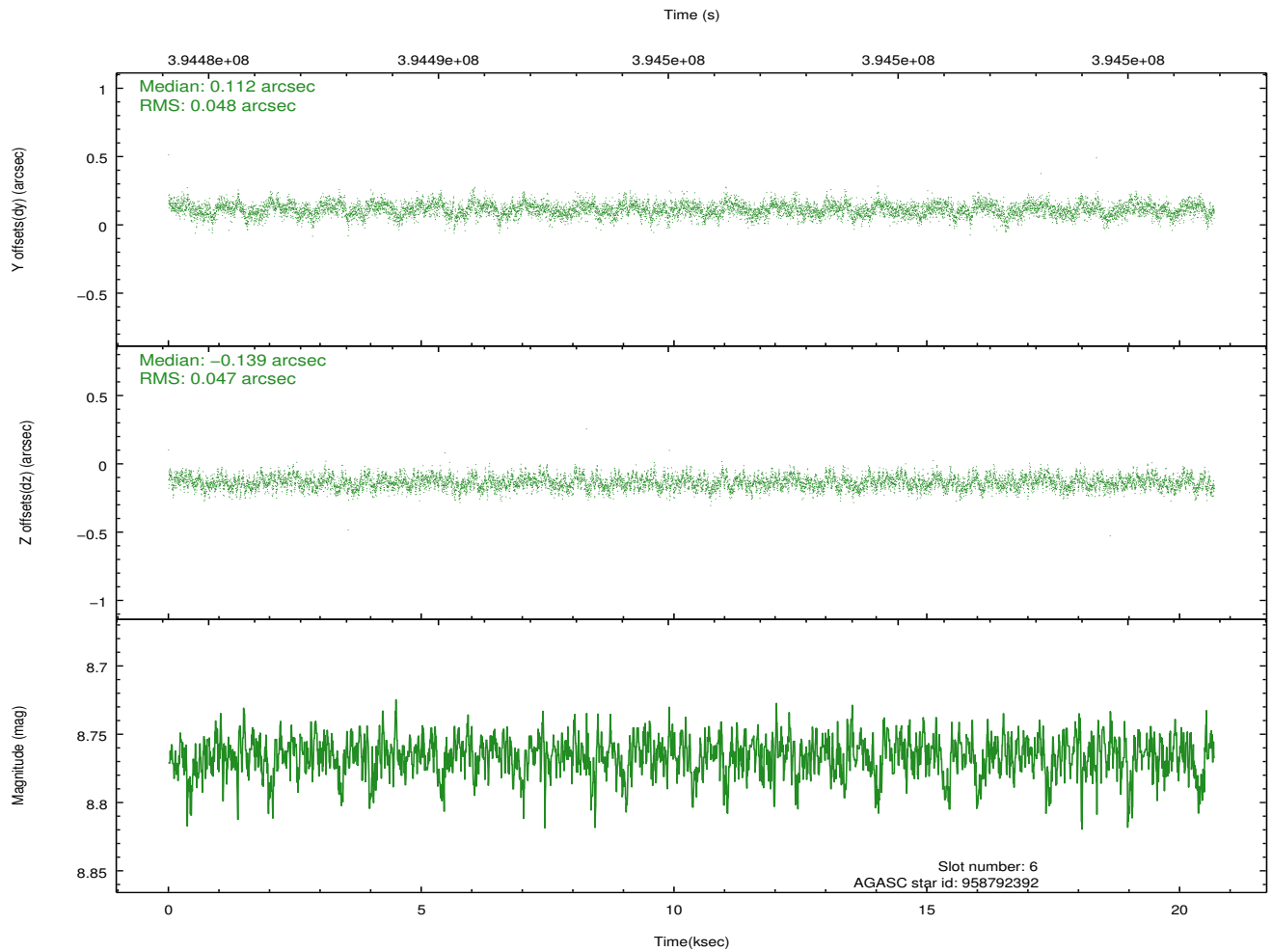
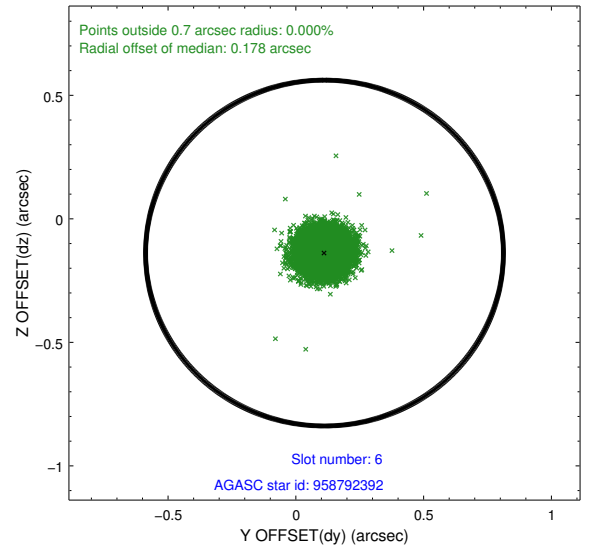
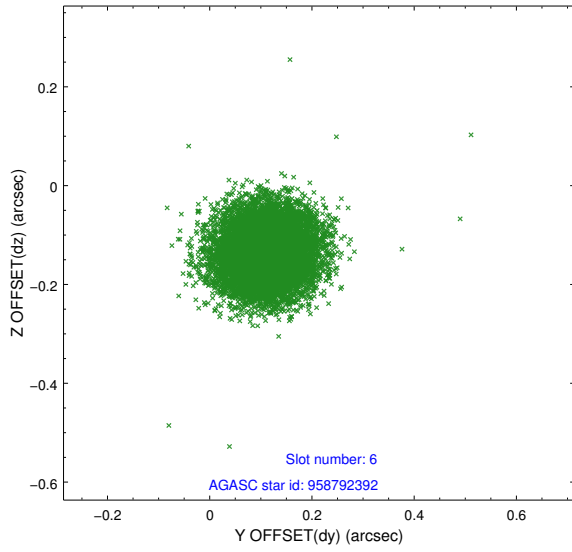
## 2.4.2 Slot 4



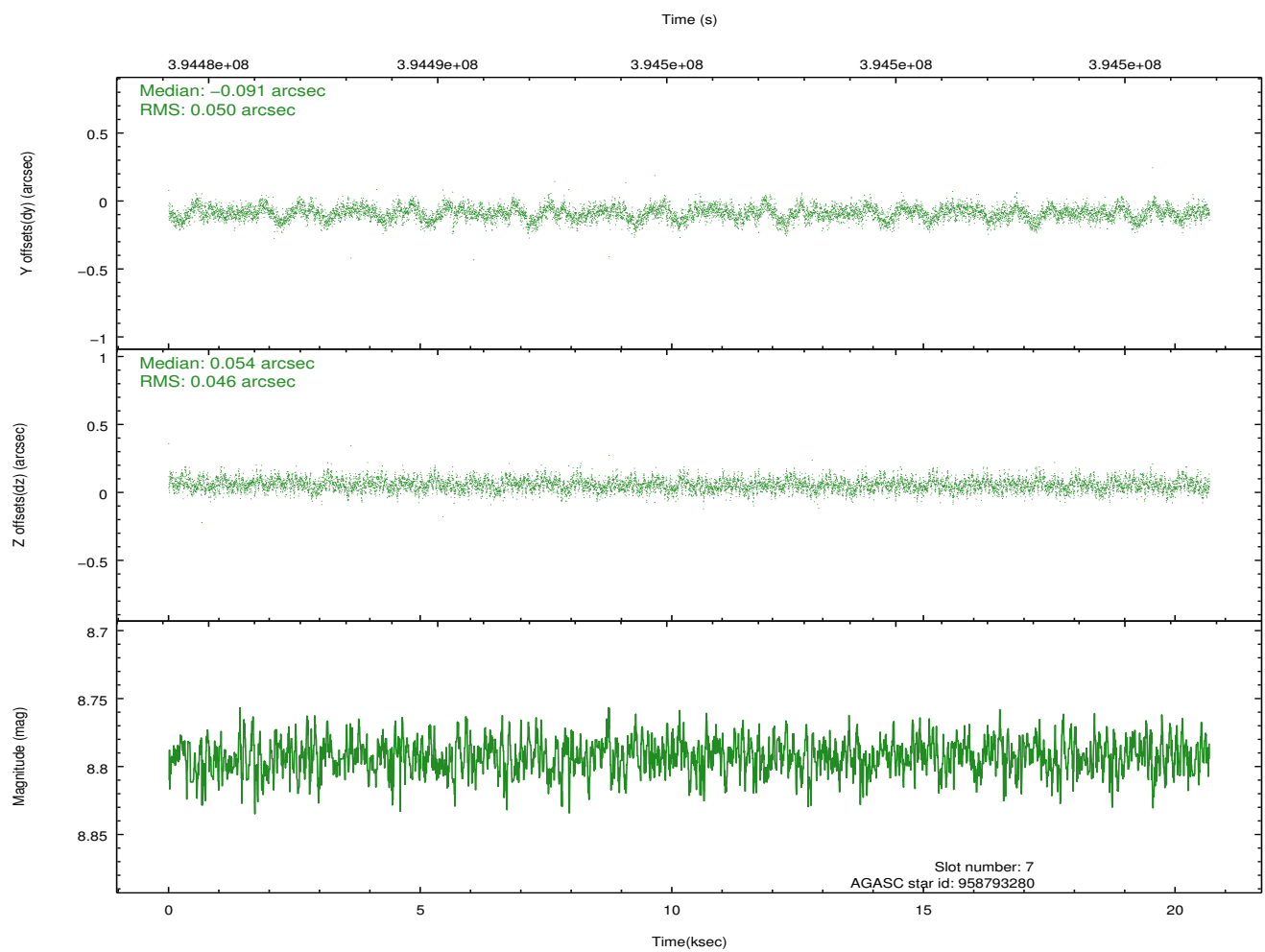
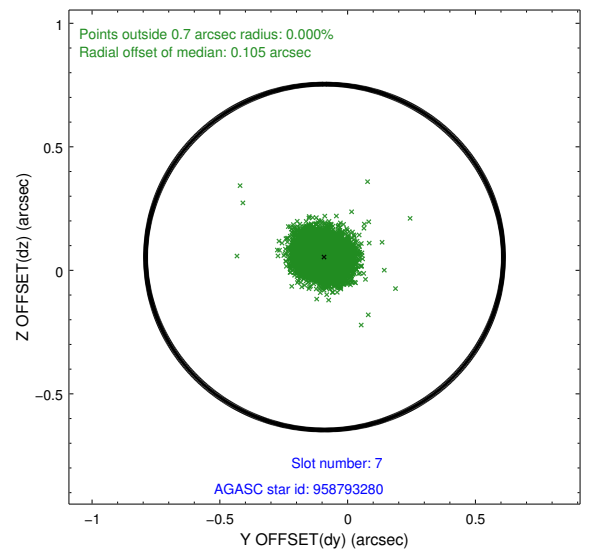
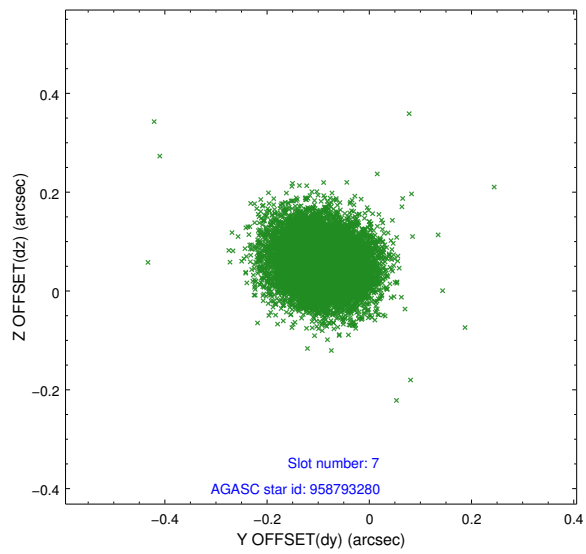
### 2.4.3 Slot 5



### 2.4.4 Slot 6

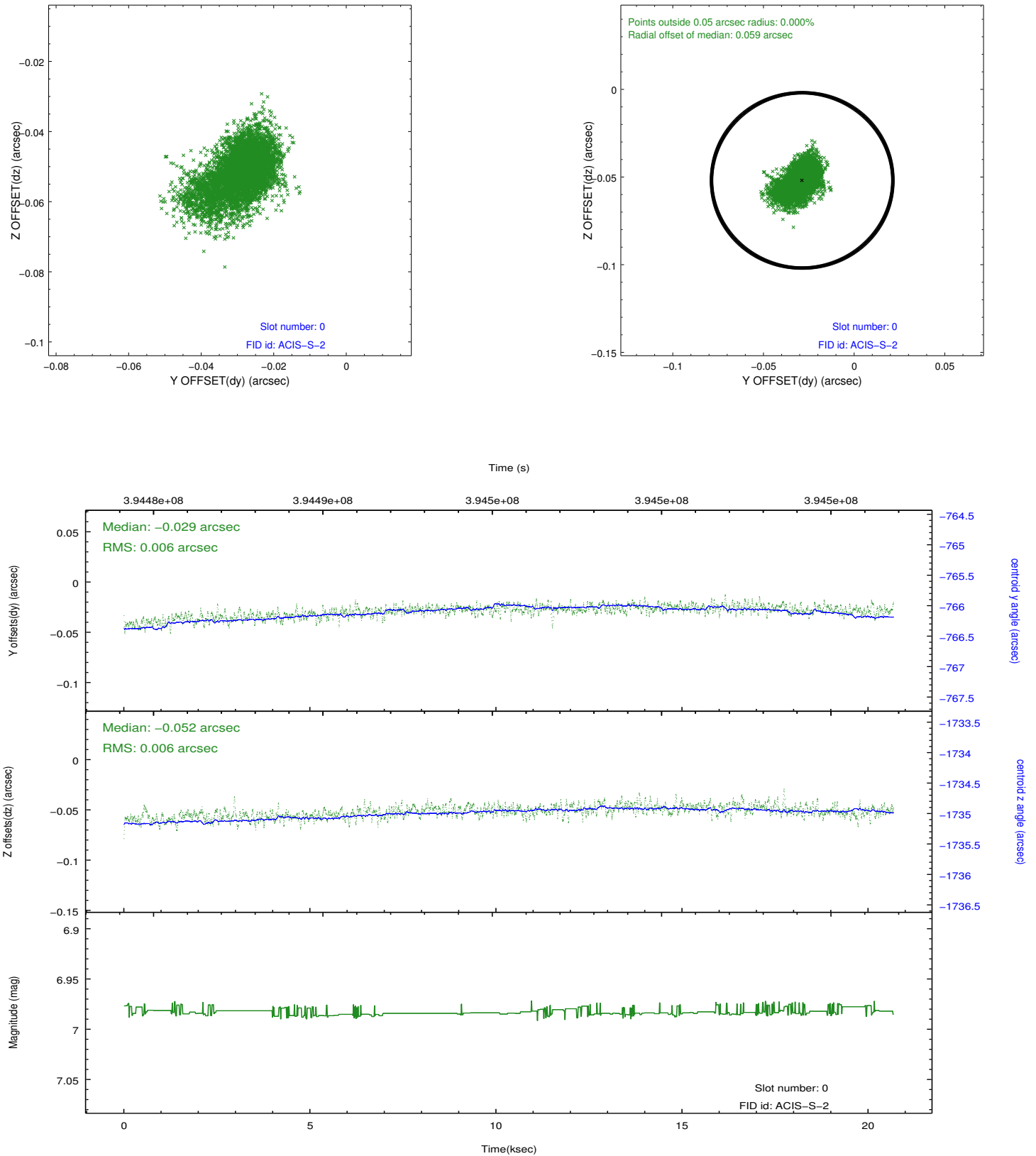


## 2.4.5 Slot 7

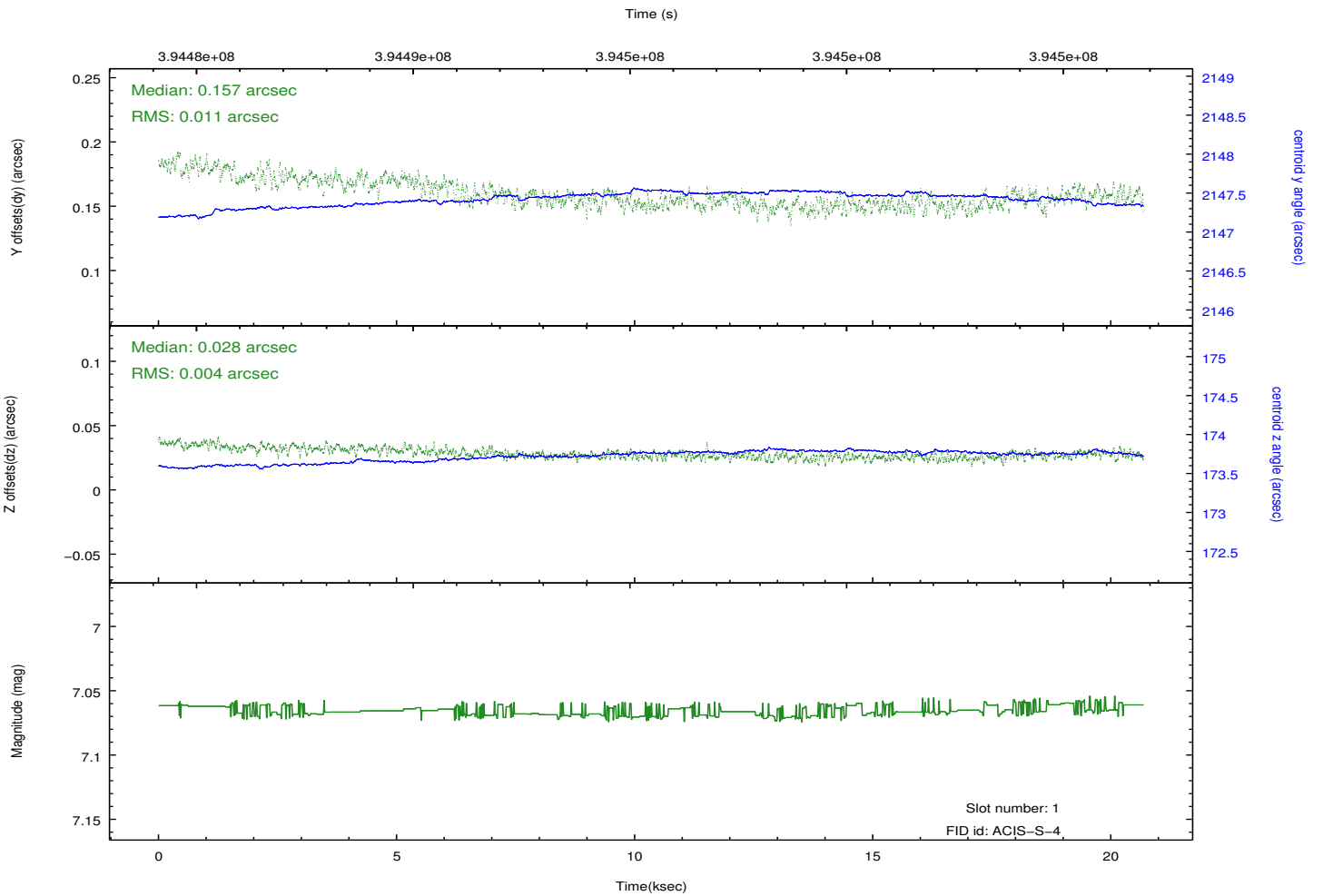
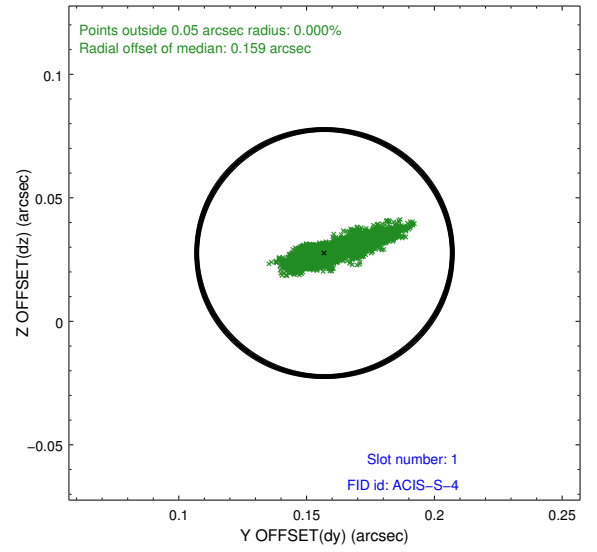
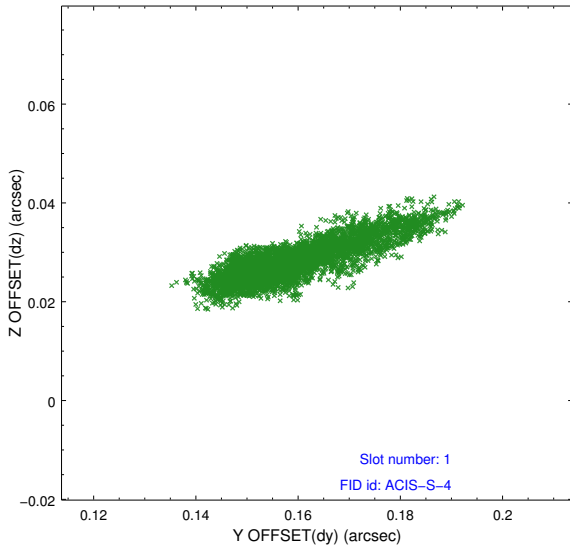


## 2.5 FID Slots

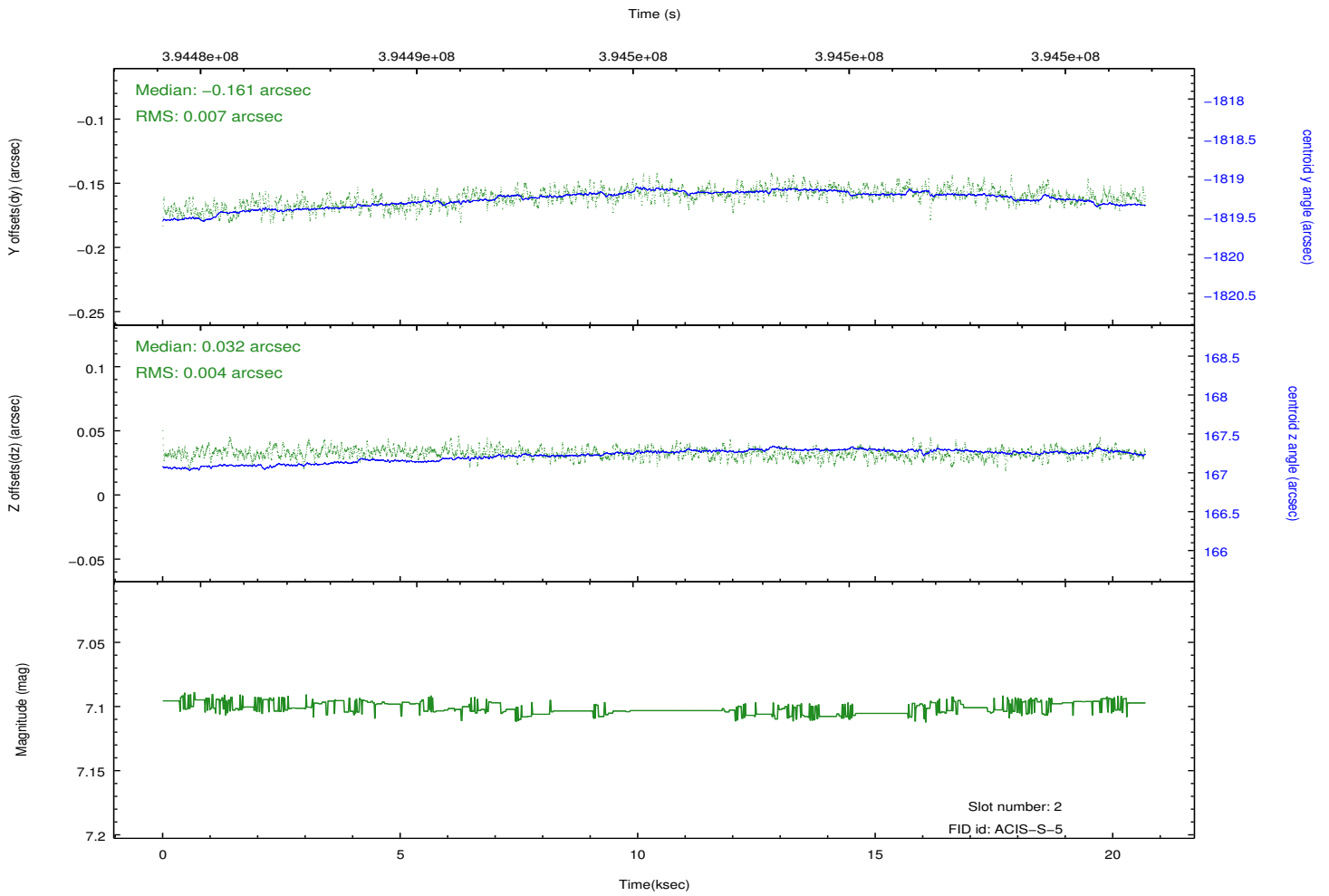
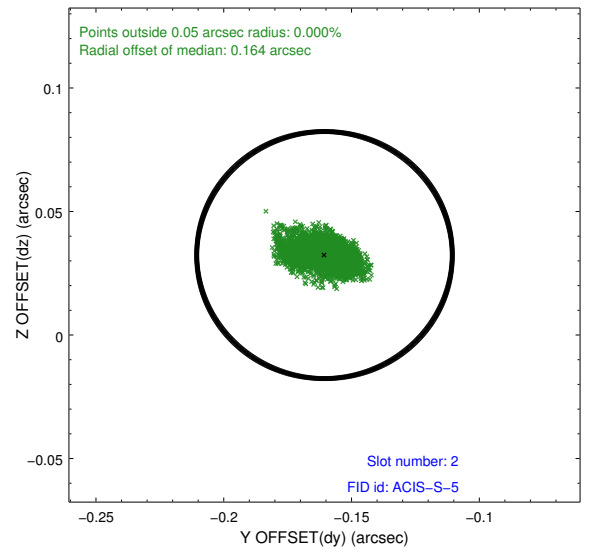
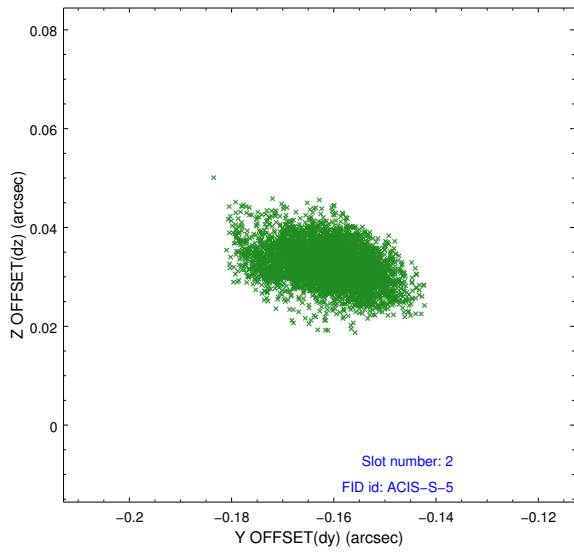
### 2.5.1 Slot 0



## 2.5.2 Slot 1



### 2.5.3 Slot 2



# A Summary

## A.1 Status

V&V Scientist	Jen Lauer
V&V Date (YYYY-MM-DD)	2012.07.06
V&V Edition	1
V&V Disposition and Status	OK
V&V Charge Time	20.036987143219

## A.2 Comments