

V&V Reference Report

L2 ASCDS Version : 8.4.5

Observation 11245 - L2 Version 2
Chandra X-Ray Center

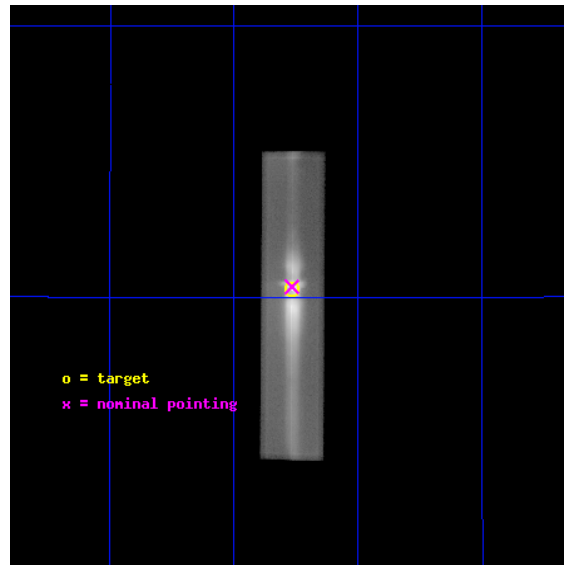
L2 Processing Date : Jul 7 2012

Contents

1	Front	2
2	OBI	3
2.1	OBI	3
2.1.1	Images	3
2.1.2	Parameters	4
2.1.3	Events	4
2.2	Compared Parameters	5
2.3	Aspect	6
2.4	Star Slots	9
2.4.1	Slot 3	9
2.4.2	Slot 4	10
2.4.3	Slot 5	11
2.4.4	Slot 6	12
2.4.5	Slot 7	13
2.5	FID Slots	14
2.5.1	Slot 0	14
2.5.2	Slot 1	15
2.5.3	Slot 2	16
3	Gratings	17
3.1	LETG Arm	17
A	Summary	19
A.1	Status	19
A.2	Comments	19

1 Front

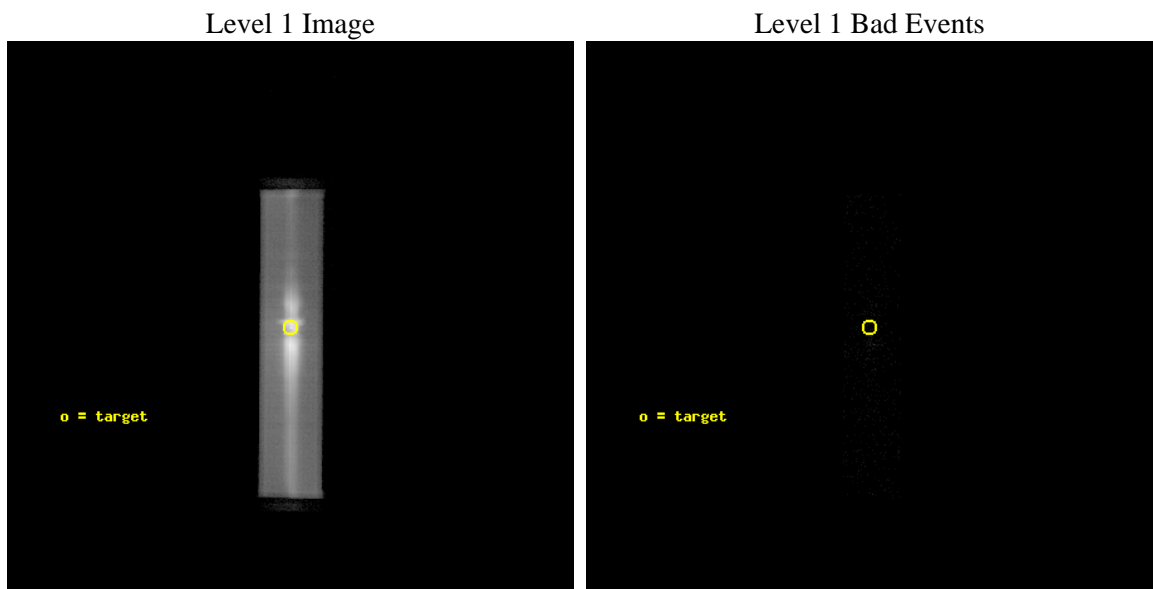
seq_num	501330	Sequence number
obs_id	11245	Observation id
title	Crab Giant Pulses: A Correlation Study at Radio and X-rays	Proposa
observer	Dr Maura McLaughlin	Principal investigator
object	PSR B0531+21	Source name
ra_targ	83.633333	Observer's specified target RA [deg]
dec_targ	22.014472	Observer's specified target Dec [deg]
ra_nom	83.633315236273	Nominal RA [deg]
dec_nom	22.019196664097	Nominal Dec [deg]
roll_nom	90.313023519775	Nominal Roll [deg]
revision	2	Processing version of data
ontime	20169.054165959	[s]
livetime	19961.526534759	Ontime multiplied by DTCOR
l2events	2784282	Number of level 2 events



2 OBI

2.1 OBI

2.1.1 Images



2.1.2 Parameters

obi_num	0	Obi number	sched_exp_time	20000.000000	[s] Scheduled observation exposure time
ascdsver	8.4.5	Processing system revision	ontime	20169.182289004	[s]
caldsver	4.5.0	 	l1events	3075332	Number of level 1 events
date	2012-07-07T03:04:45	Date and time of file creation			
revision	2	Processing version of data			

2.1.3 Events

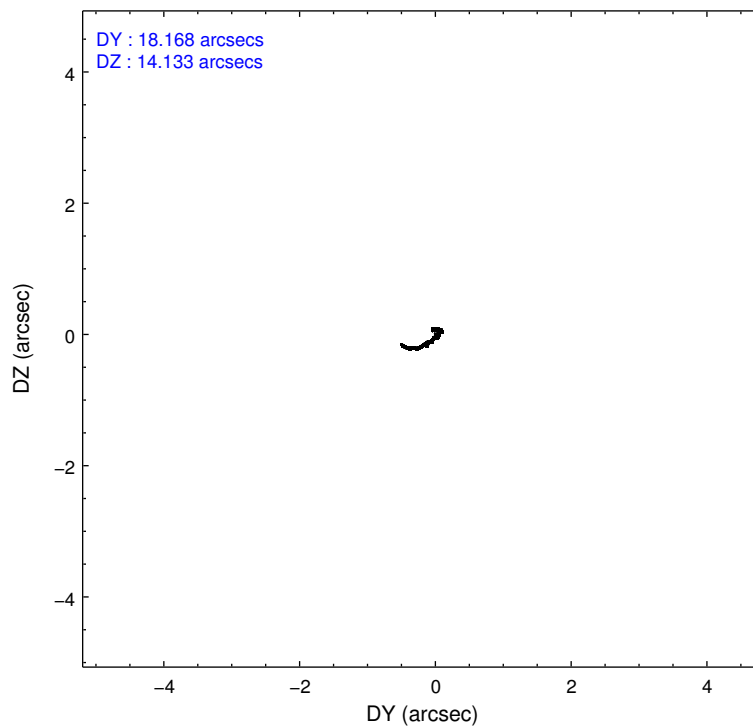
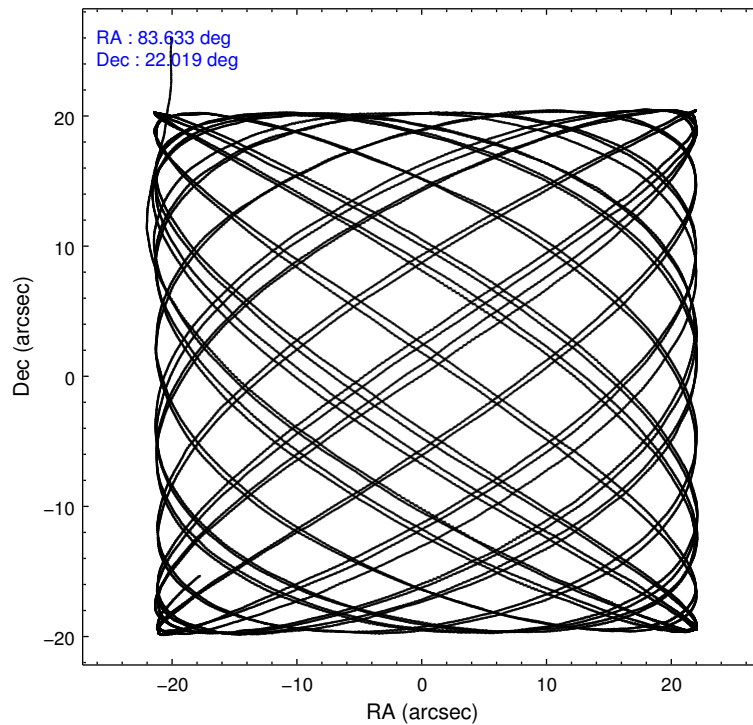
Level 1 Events

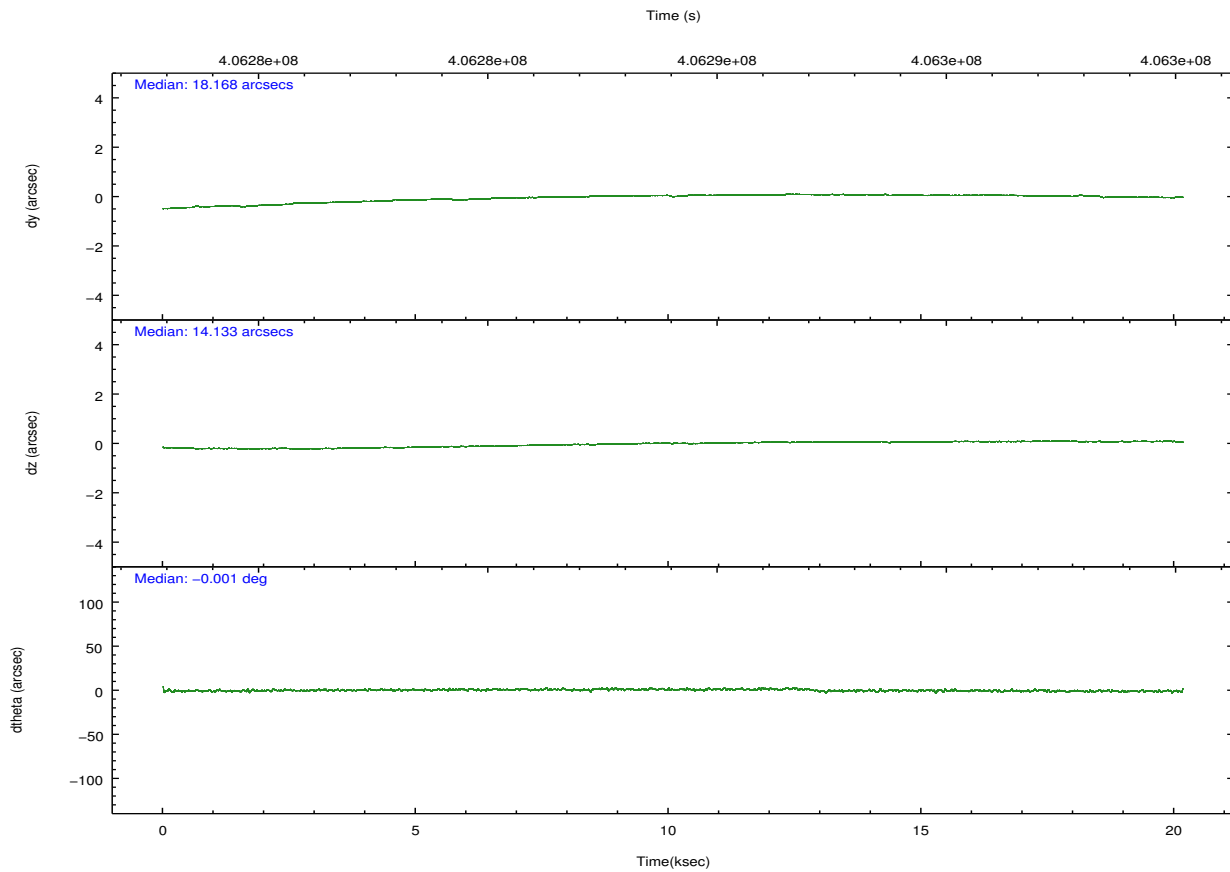
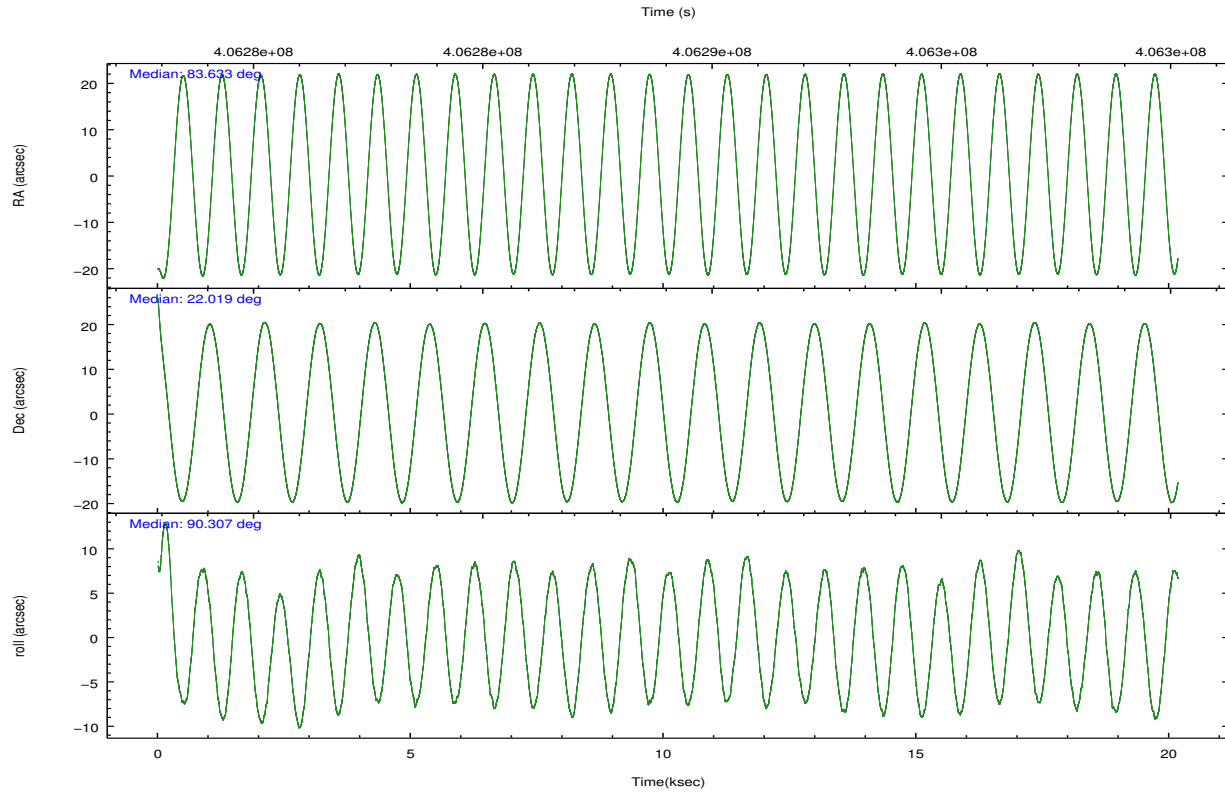
	segment 1	segment 2	segment 3
level 1 events	536	3074790	6
rejected events	26	45602	5
rejected %	4%	1%	83%

2.2 Compared Parameters

Parameter	Planned	Actual	Parameter	Planned	Actual
Instrument	HRC	HRC	Obspar format version number	7	7
Detector	HRC-S	HRC-S	Obspar file type	PREDICTED	ACTUAL
Grating	LETG	LETG	Obspar update status	NONE	UPDATED
Data mode	OBSERVING	OBSERVING			
Observation mode	POINTING	POINTING			
[deg] Pointing RA	83.650319	83.63331523627257			
[deg] Pointing Dec	21.995205	22.01919666409721			
[deg] Pointing Roll	90.239318	90.31302351977527			
[mm] SIM focus pos	-1.429586	-1.428180813131781			
[mm] SIM defocus	0.1037507710433287	0.1051558262725154			
[mm] SIM translation stage pos	250.455976	250.466033080201			
[mm] SIM translation stage offset	0	-0.01005468664627074			
[s] Observation start time (MET)	406279128.184000	406278235.6189			
Observation start date	2010-11-16T07:17:42	2010-11-16T07:03:55			
[s] Observation end time (MET)	406299128.184000	406300316.17004			
Observation end date	2010-11-16T12:51:02	2010-11-16T13:11:56			

2.3 Aspect



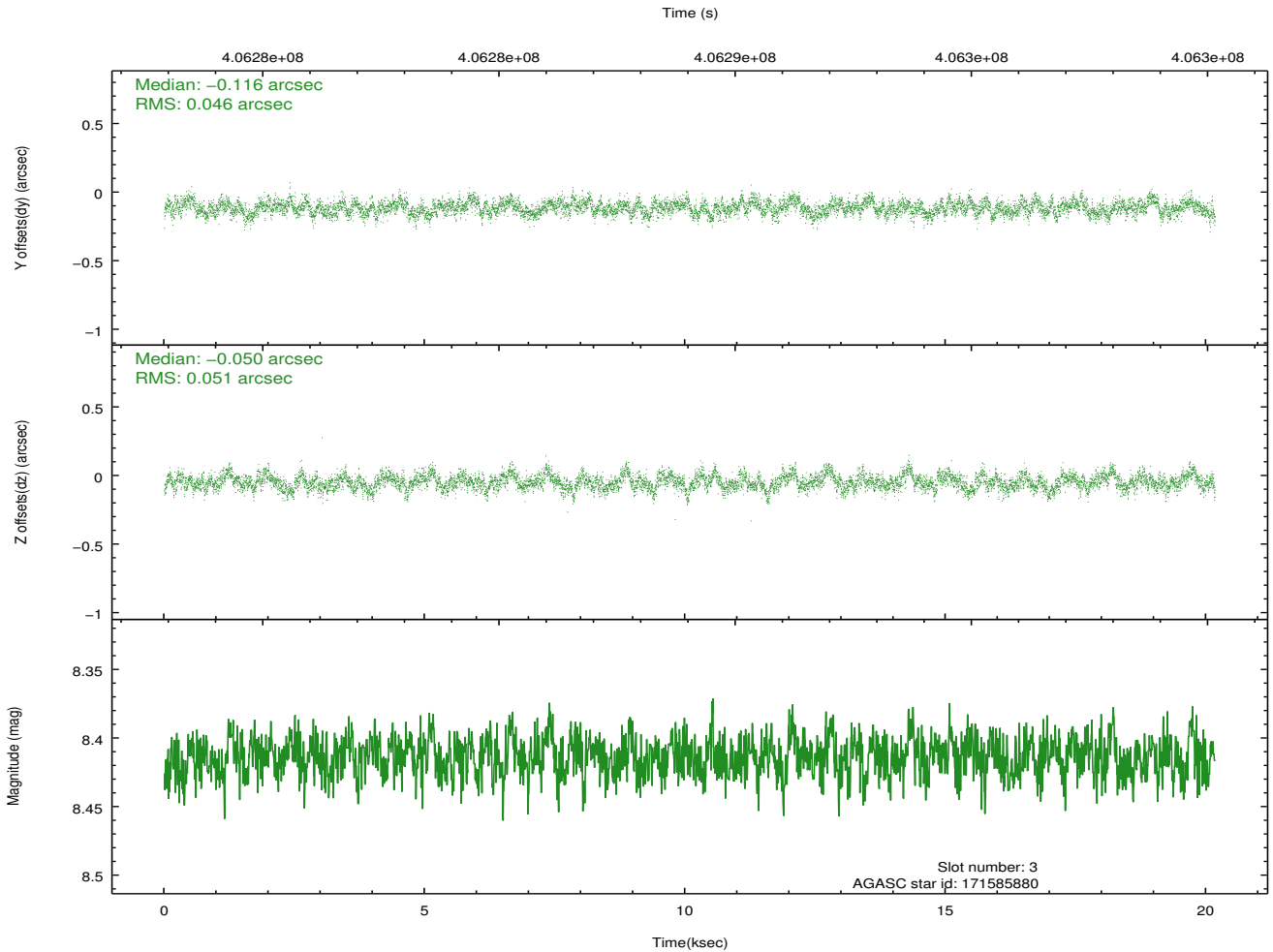
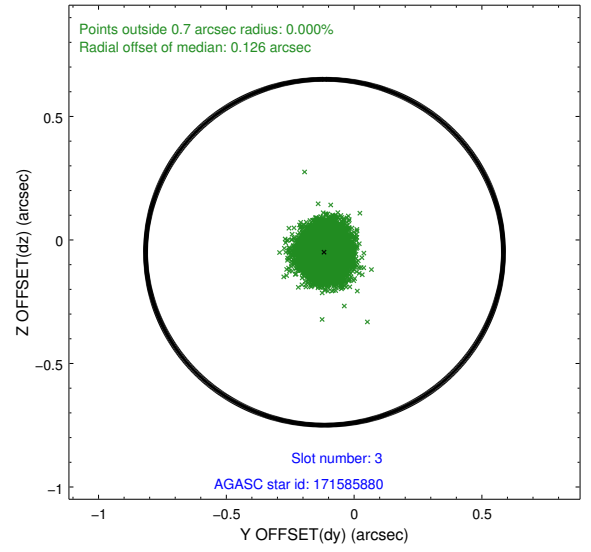
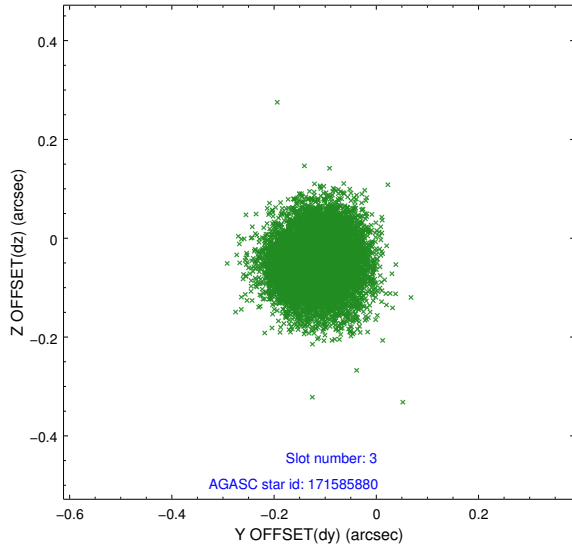


Slot Statistics

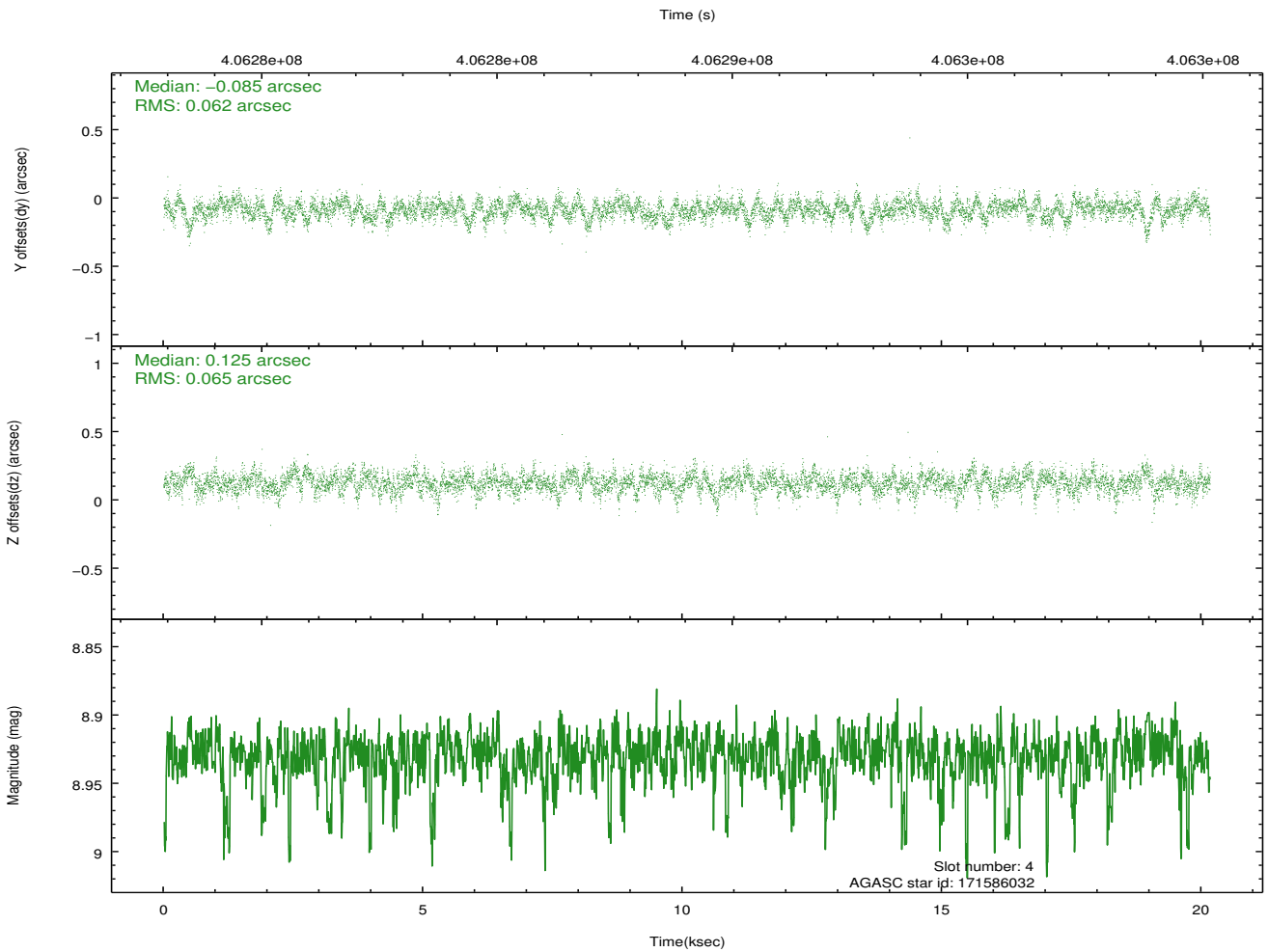
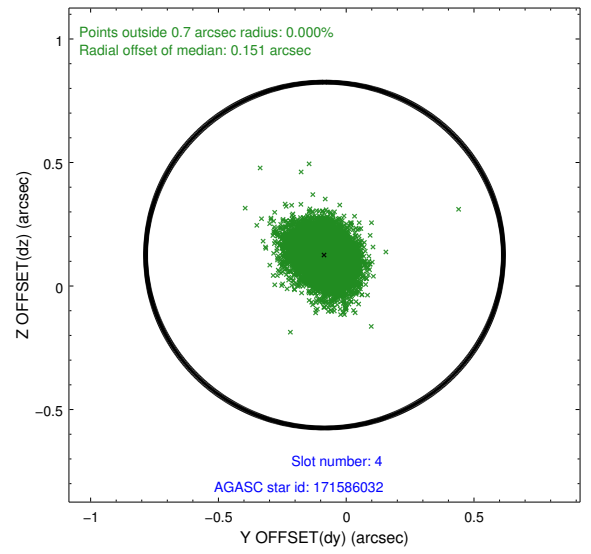
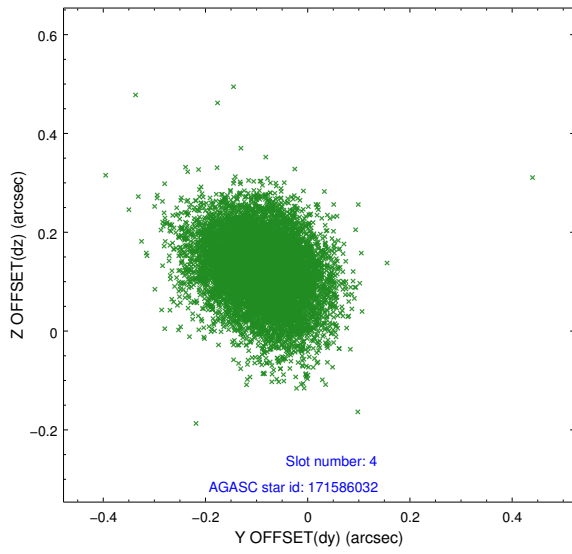
slot	status	id	mag	n_pts	med_dy	med_dz	dr1	dr2	ra	dec	mean_y	mean_z
0	FID	HRC-S-2	6.97	4920	0.172	-0.085	0.022	0.035	0.000000	0.000000	1227.15	-455.56
1	FID	HRC-S-3	7.01	4920	-0.002	-0.083	0.009	0.018	0.000000	0.000000	-1175.13	566.64
2	FID	HRC-S-4	6.93	4919	0.236	-0.128	0.023	0.036	0.000000	0.000000	1225.60	569.25
3	GUIDE	171585880	8.41	9831	-0.116	-0.050	0.073	0.117	83.676260	22.176319	651.96	-89.18
4	GUIDE	171586032	8.93	9790	-0.085	0.125	0.093	0.157	83.950197	22.083225	314.19	-1001.53
5	GUIDE	171721904	9.19	9835	0.011	0.049	0.119	0.193	84.272676	22.116922	434.43	-2077.45
6	GUIDE	243941560	8.31	9836	-0.033	0.030	0.077	0.129	83.733264	22.568598	2063.39	-284.19
7	GUIDE	171597832	9.15	9831	0.226	-0.155	0.092	0.151	83.183230	21.366702	-2253.03	1575.06

2.4 Star Slots

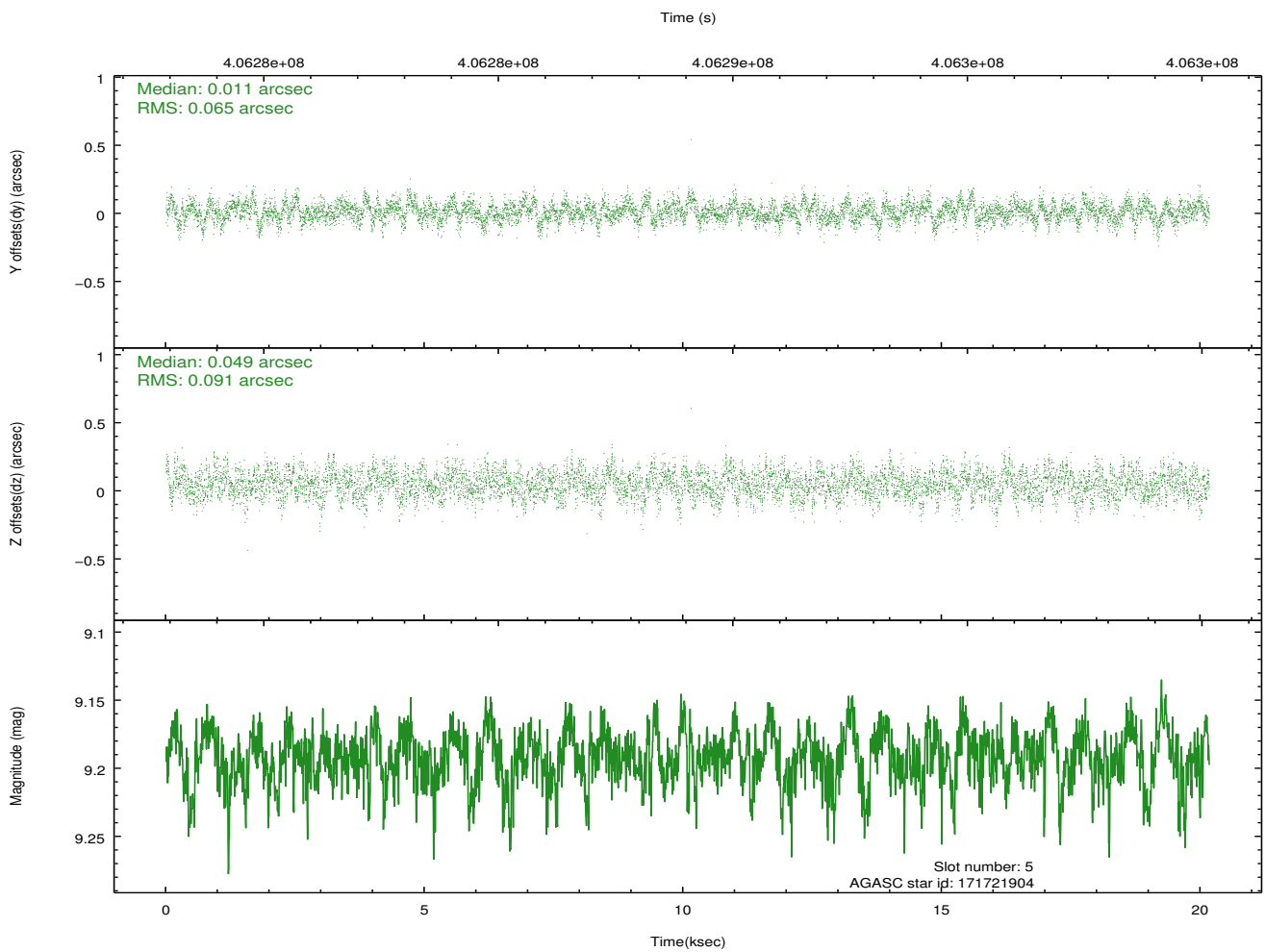
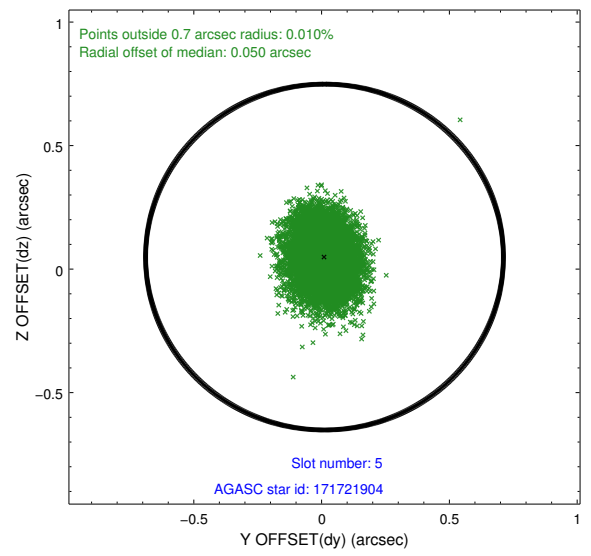
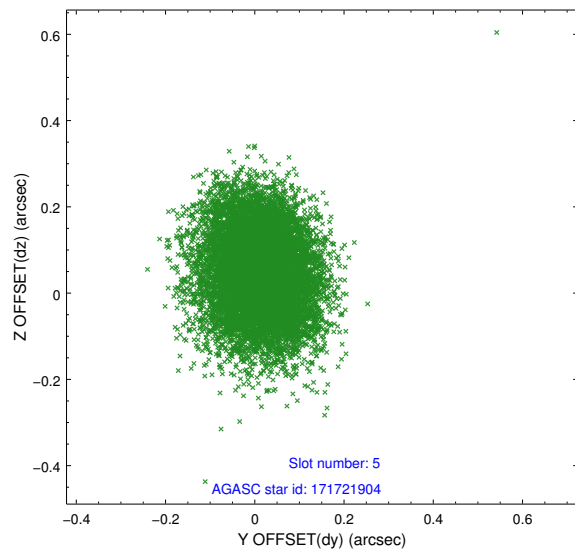
2.4.1 Slot 3



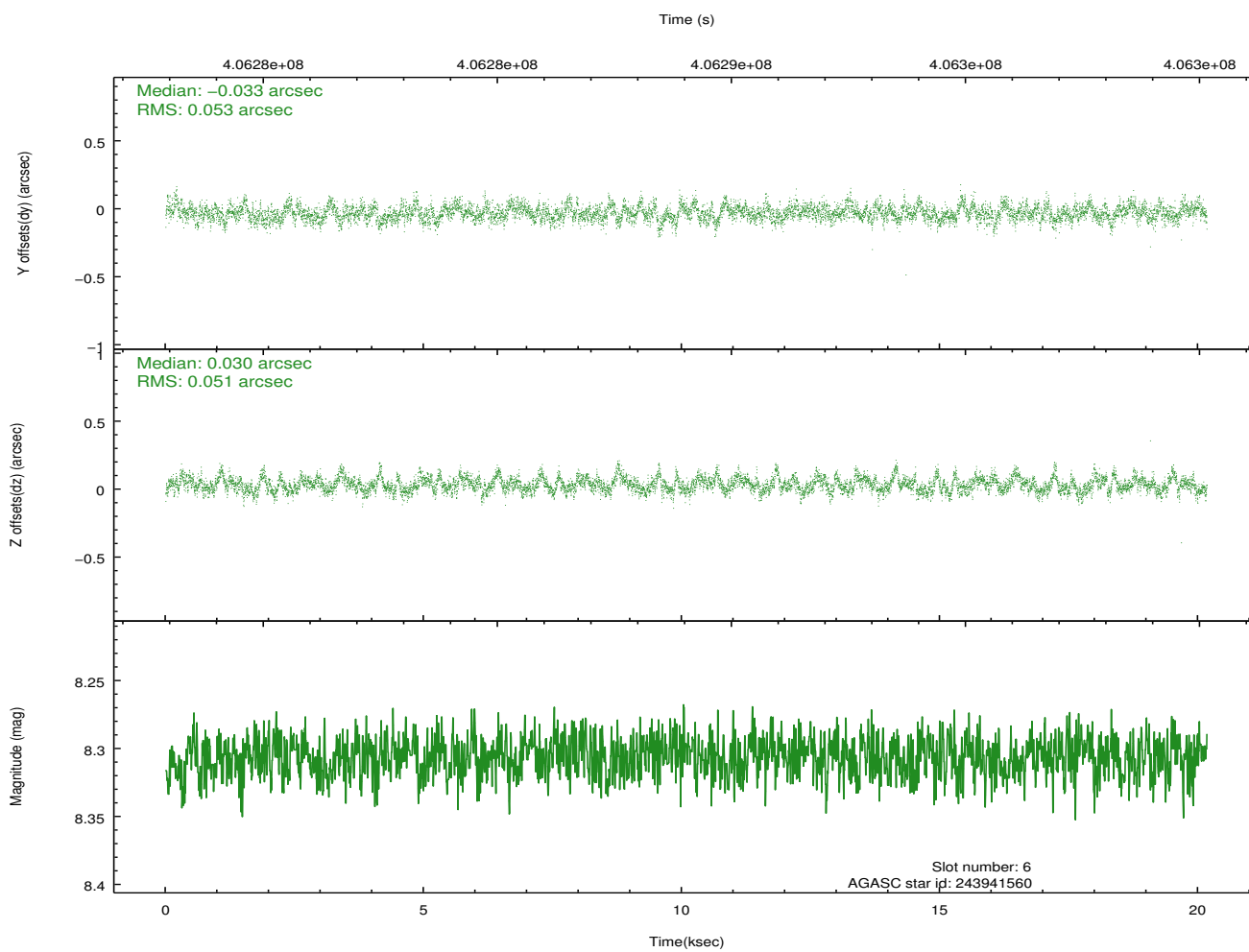
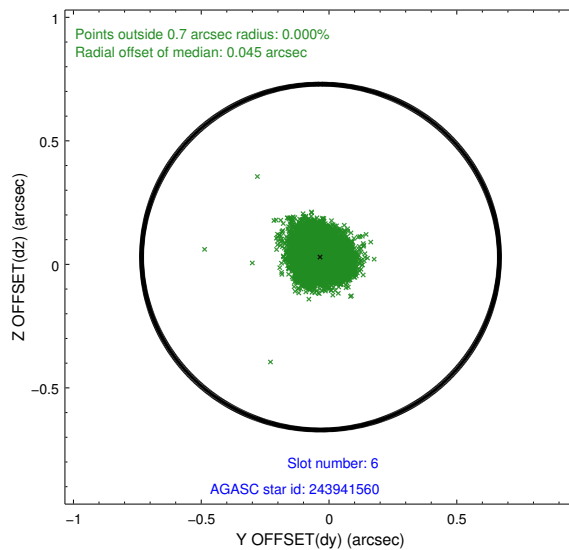
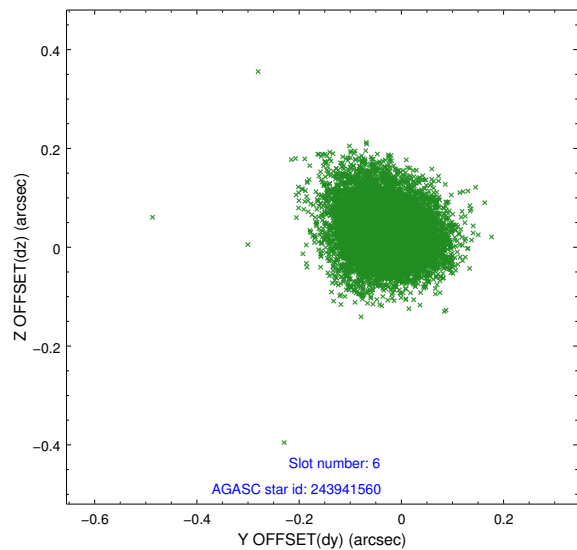
2.4.2 Slot 4



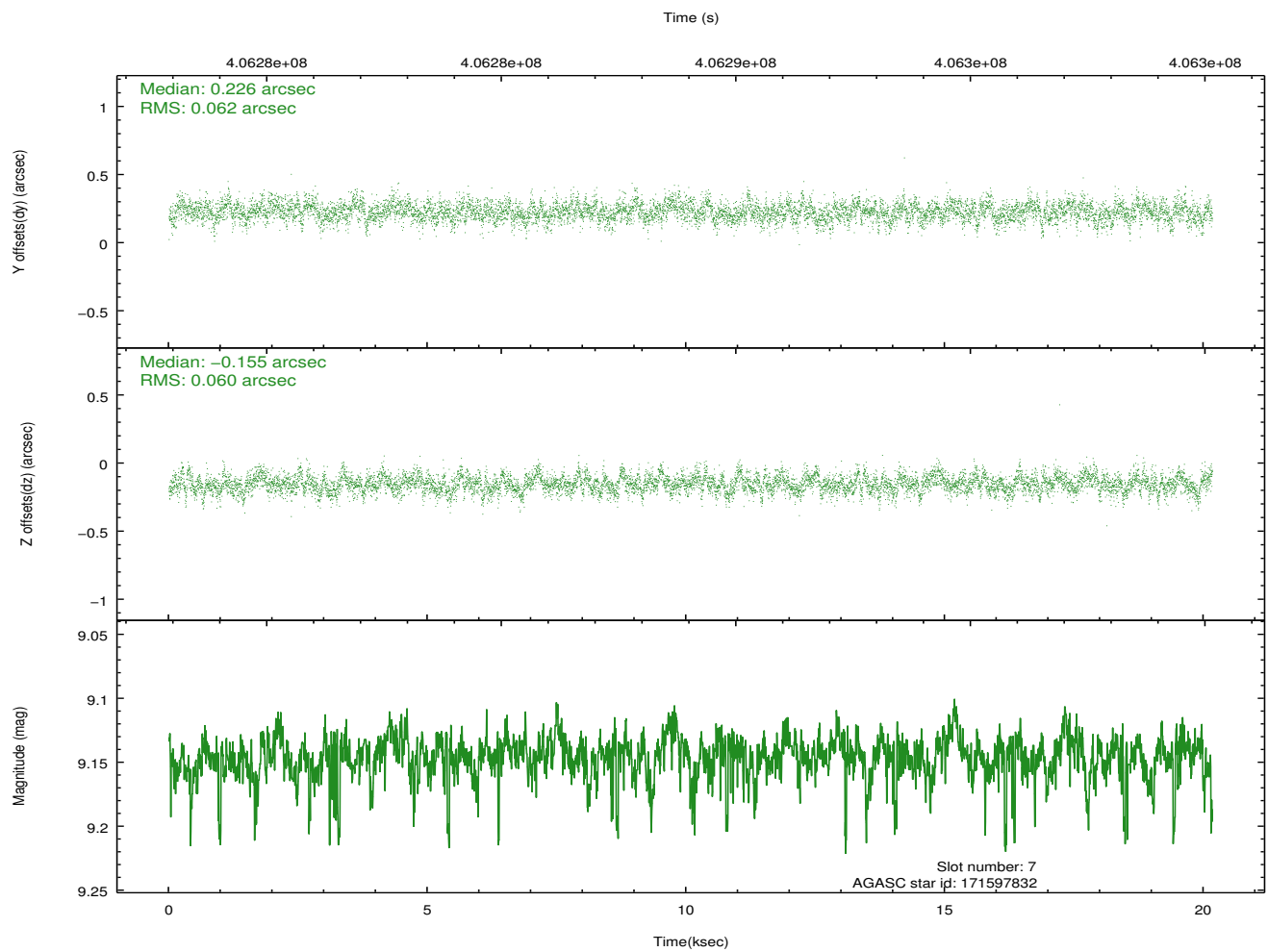
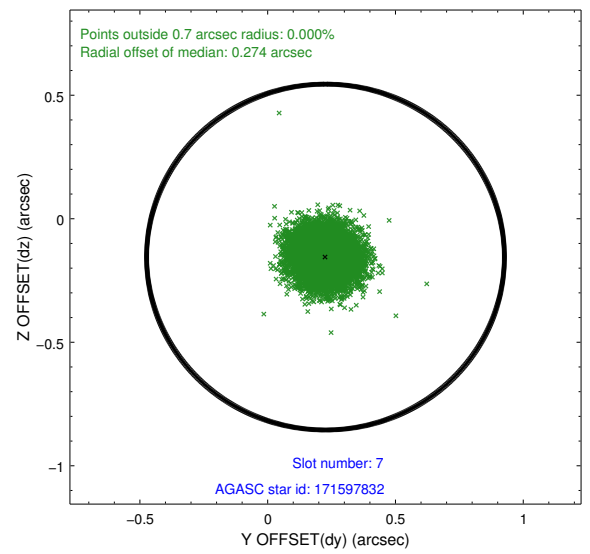
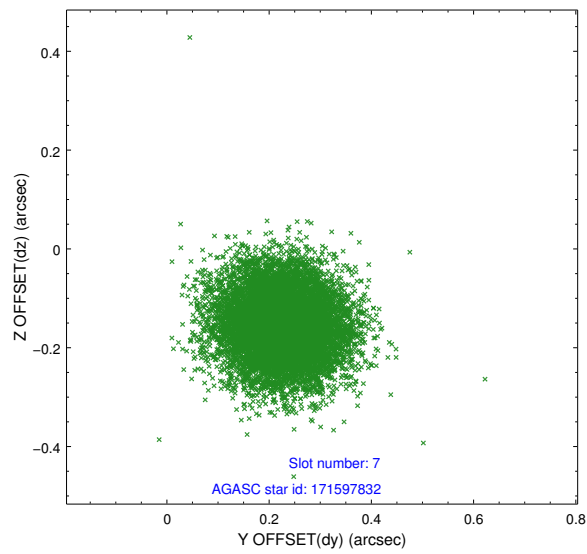
2.4.3 Slot 5



2.4.4 Slot 6

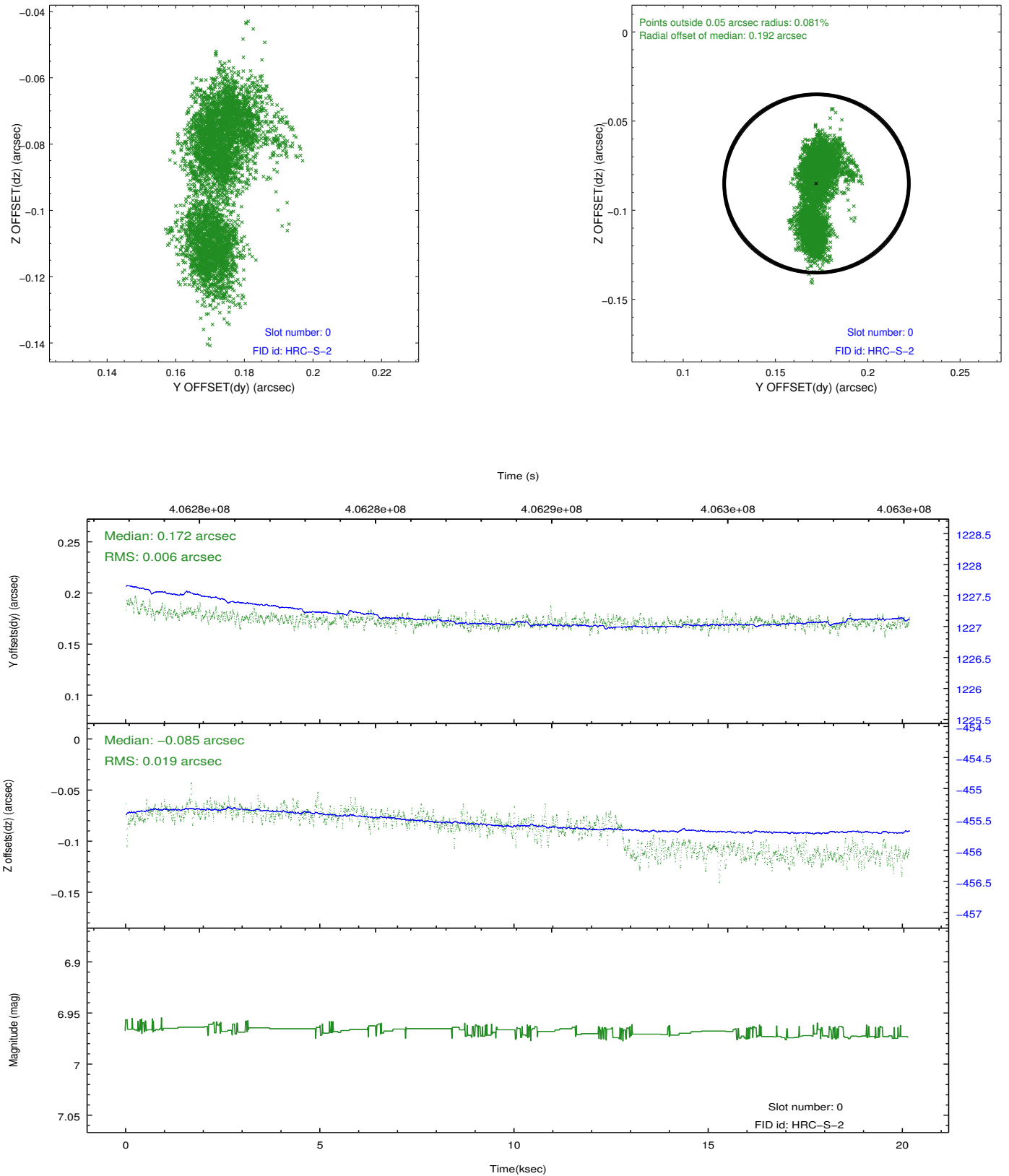


2.4.5 Slot 7

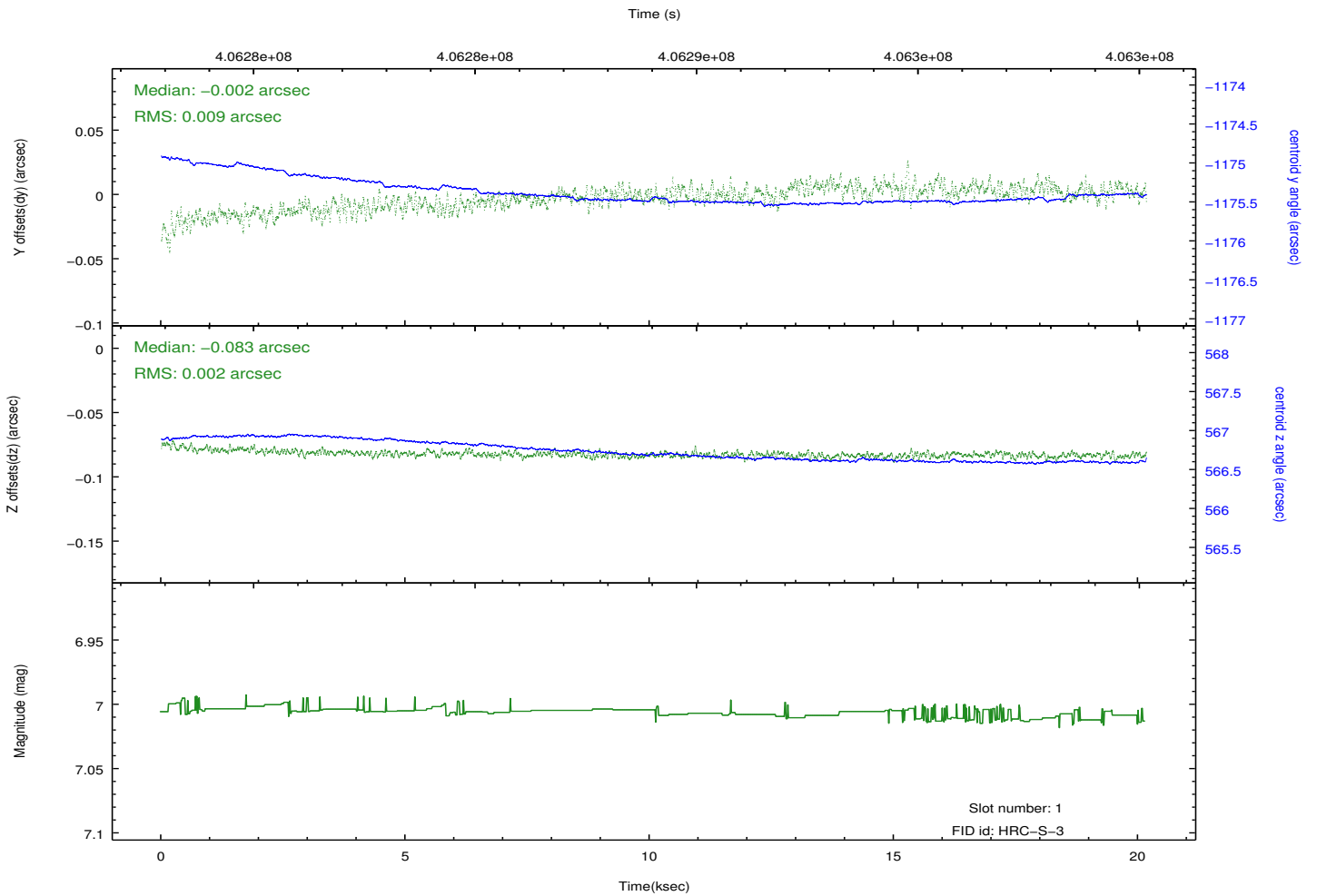
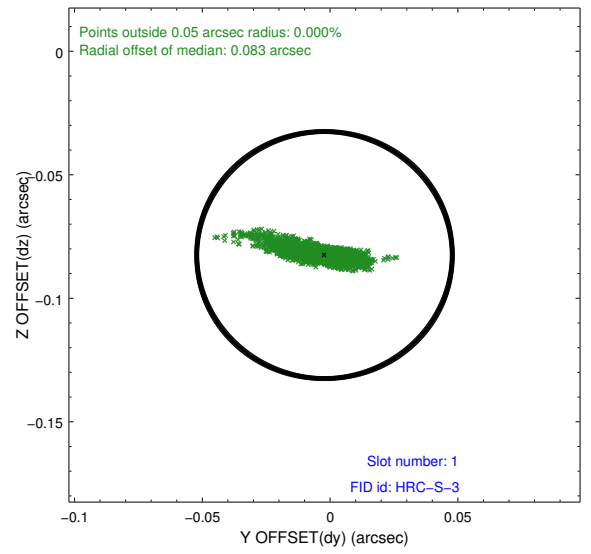
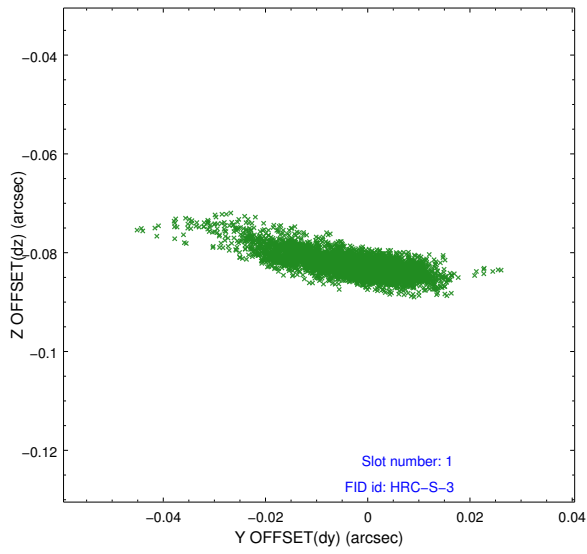


2.5 FID Slots

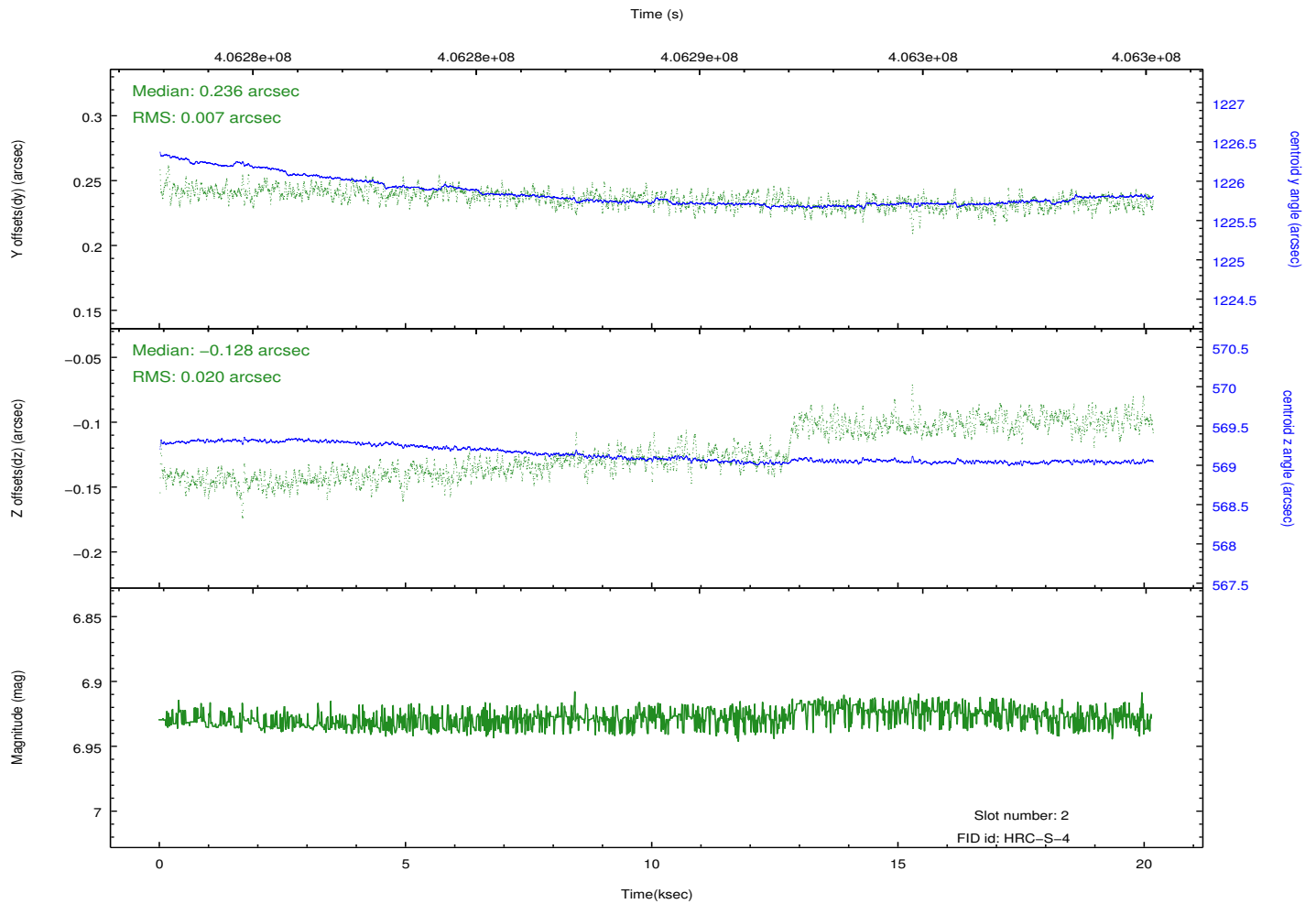
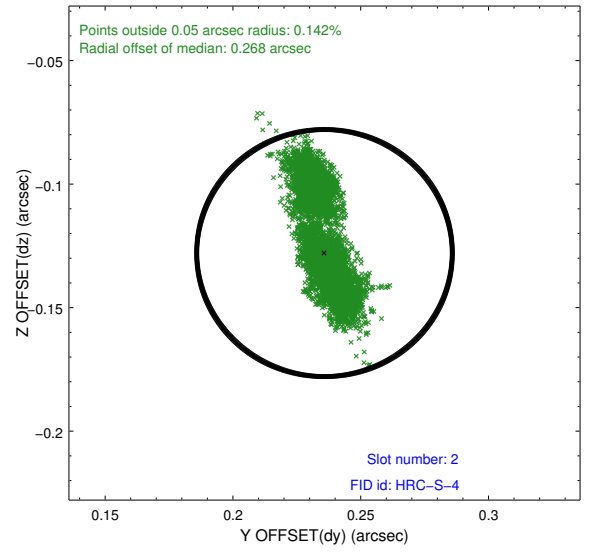
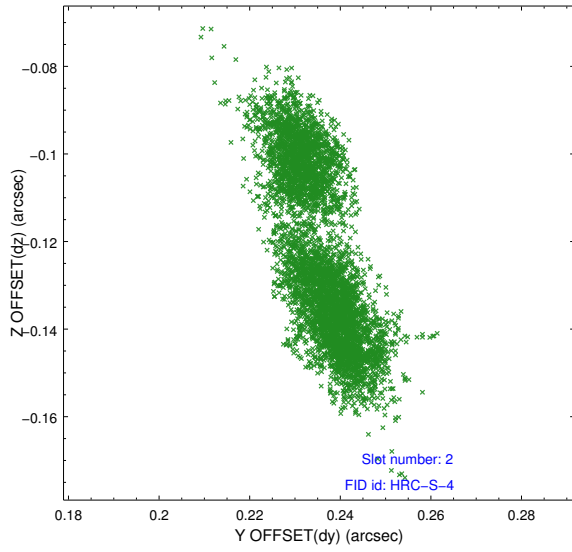
2.5.1 Slot 0



2.5.2 Slot 1

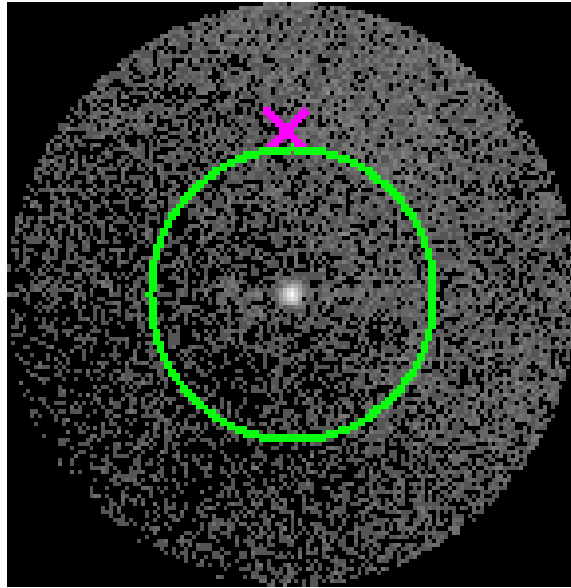


2.5.3 Slot 2

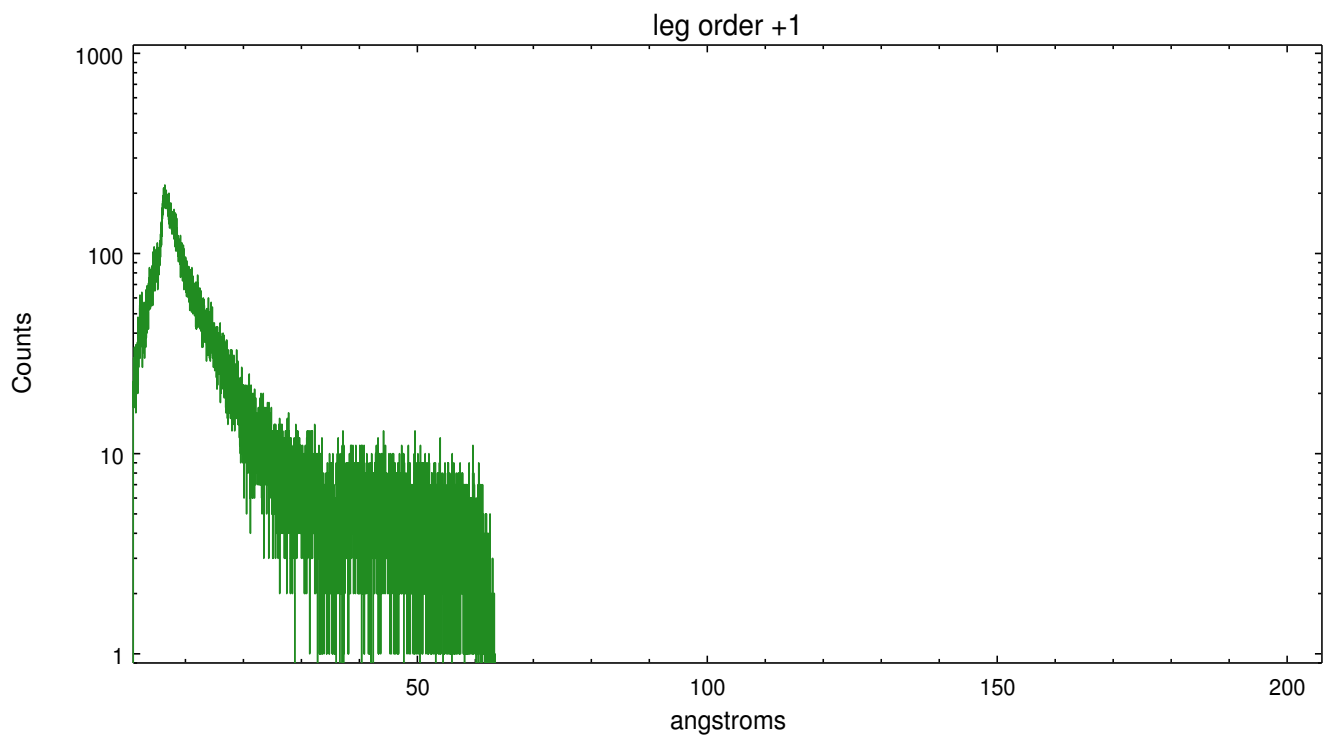
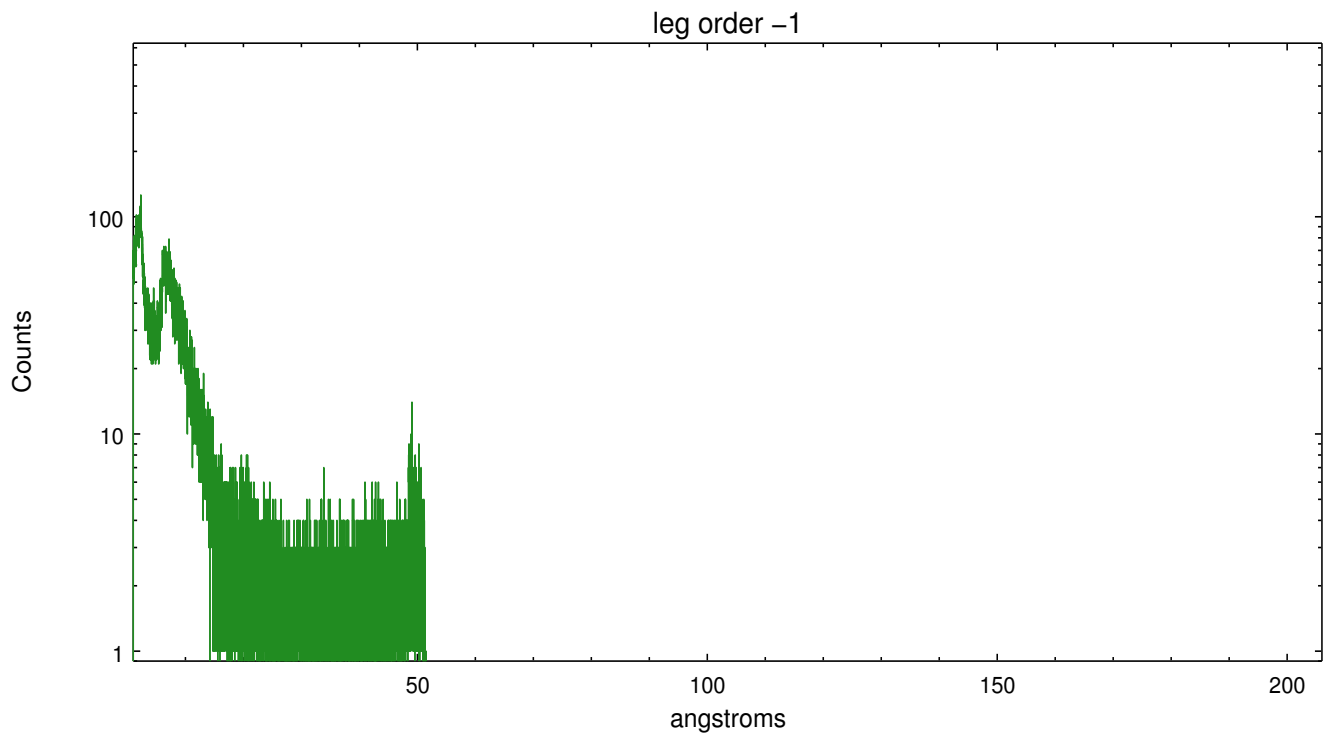


3 Gratings

3.1 LETG Arm



LETG Zero Order



A Summary

A.1 Status

V&V Scientist	Joy Nichols
V&V Date (YYYY-MM-DD)	2012.07.19
V&V Edition	1
V&V Disposition and Status	OK
V&V Charge Time	20.169054166496

A.2 Comments

Extended source. WARNING: there are no standard ciao tools for analysis of grating spectra from extended sources. The shape of an emission 'line' will be the shape of the zero order spatial structure convolved with the instrumental LSF. Grating extractions can be used, but need to be combined with custom spatial-spectral analysis, since wavelength is multi-valued at any particular diffraction angle.