

# V&V Reference Report

## L2 ASCDS Version : 8.4.5

Observation 11505 - L2 Version 2  
Chandra X-Ray Center

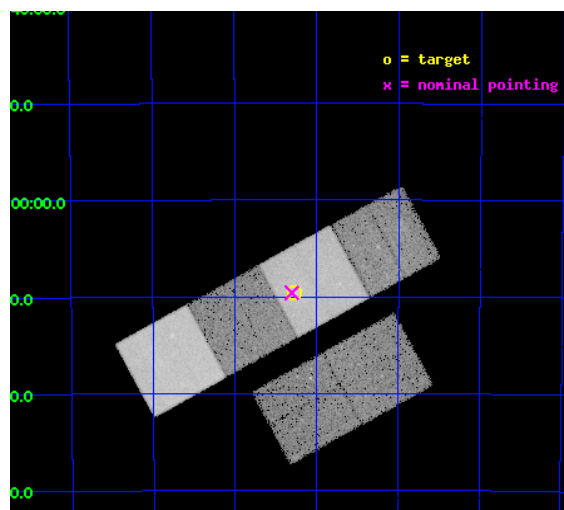
L2 Processing Date : Jun 11 2012

## Contents

<b>1</b>	<b>Front</b>	<b>2</b>
<b>2</b>	<b>OBI</b>	<b>3</b>
2.1	OBI . . . . .	3
2.1.1	Images . . . . .	3
2.1.2	Bias . . . . .	3
2.1.3	Parameters . . . . .	4
2.1.4	Events . . . . .	4
2.2	Compared Parameters . . . . .	5
2.3	Aspect . . . . .	6
2.4	Star Slots . . . . .	9
2.4.1	Slot 3 . . . . .	9
2.4.2	Slot 4 . . . . .	10
2.4.3	Slot 5 . . . . .	11
2.4.4	Slot 6 . . . . .	12
2.4.5	Slot 7 . . . . .	13
2.5	FID Slots . . . . .	14
2.5.1	Slot 0 . . . . .	14
2.5.2	Slot 1 . . . . .	15
2.5.3	Slot 2 . . . . .	16
<b>A</b>	<b>Summary</b>	<b>17</b>
A.1	Status . . . . .	17
A.2	Comments . . . . .	17

# 1 Front

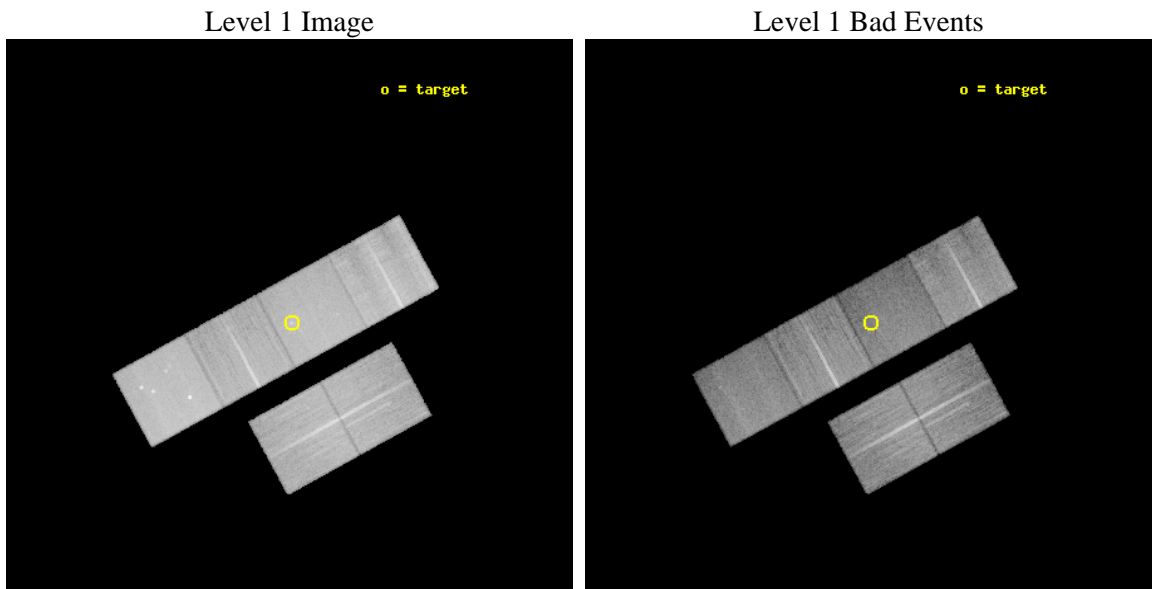
seq_num	702091	Sequence number
obs_id	11505	Observation id
title	The nature of active nuclei in radio galaxies: observations of the 2Jy sample	Proposal title
observer	Dr Martin Hardcastle	Principal investigator
object	PKS 1954-55	Source name
dtcycle	0	&#160
cycle	P	events from which exps? Prim/Second/Both
ra_targ	299.567083	Observer's specified target RA [deg]
dec_targ	-55.160417	Observer's specified target Dec [deg]
ra_nom	299.57554083463	Nominal RA [deg]
dec_nom	-55.160165045206	Nominal Dec [deg]
roll_nom	331.27186033731	Nominal Roll [deg]
revision	2	Processing version of data
ontime	20915.199922144	Sum of GTIs [s]
livetime	20650.359067109	Livetime [s]
ontime2	20905.476861119	Sum of GTIs [s]
ontime3	20915.199922144	Sum of GTIs [s]
ontime5	20915.199922144	Sum of GTIs [s]
ontime6	20911.958901823	Sum of GTIs [s]
ontime7	20915.199922144	Sum of GTIs [s]
ontime8	20915.199922144	Sum of GTIs [s]
l2events	282931	Number of level 2 events



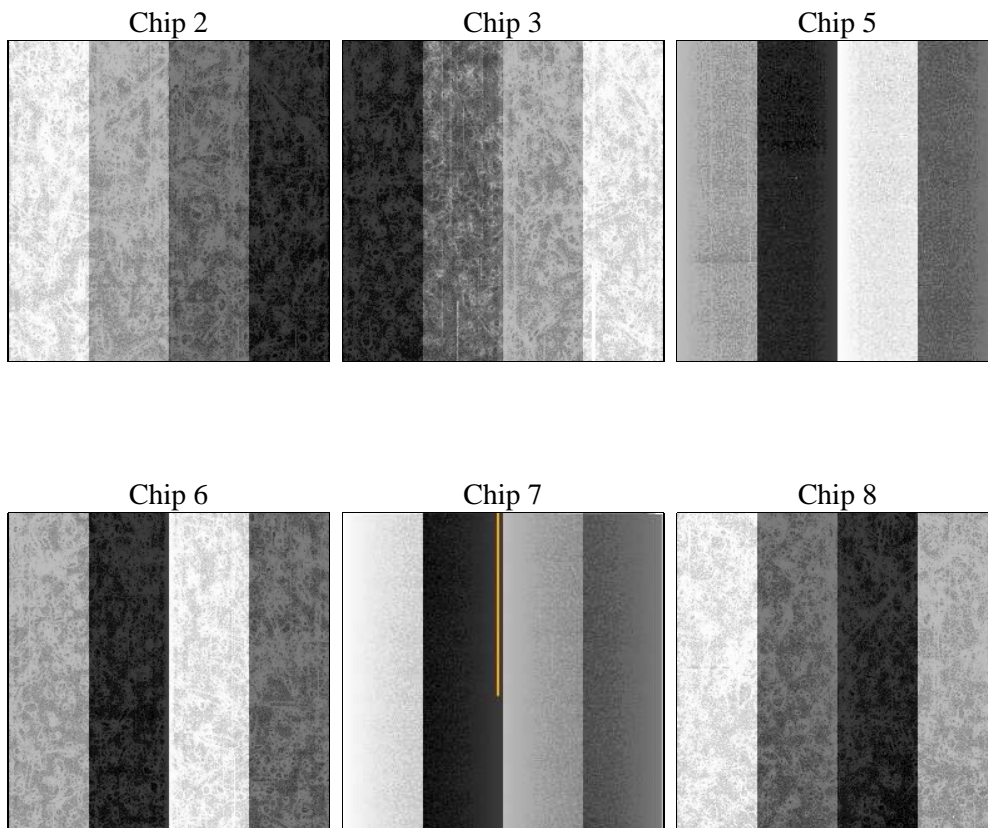
## 2 OBI

### 2.1 OBI

#### 2.1.1 Images



#### 2.1.2 Bias



### 2.1.3 Parameters

obi_num	0	Obi number	sched_exp_time	20758.643000	[s] Scheduled observation exposure time
ascdsver	8.4.5	Processing system revision	ontime	20915.199922144	Sum of GTIs [s]
caldbver	4.4.10	&#160	ontime2	20905.476861119	Sum of GTIs [s]
date	2012-06-11T15:30:34	Date and time of file creation	ontime3	20915.199922144	Sum of GTIs [s]
revision	2	Processing version of data	ontime5	20915.199922144	Sum of GTIs [s]
			ontime6	20911.958901823	Sum of GTIs [s]
			ontime7	20915.199922144	Sum of GTIs [s]
			ontime8	20915.199922144	Sum of GTIs [s]
			l1events	1265675	Number of level 1 events

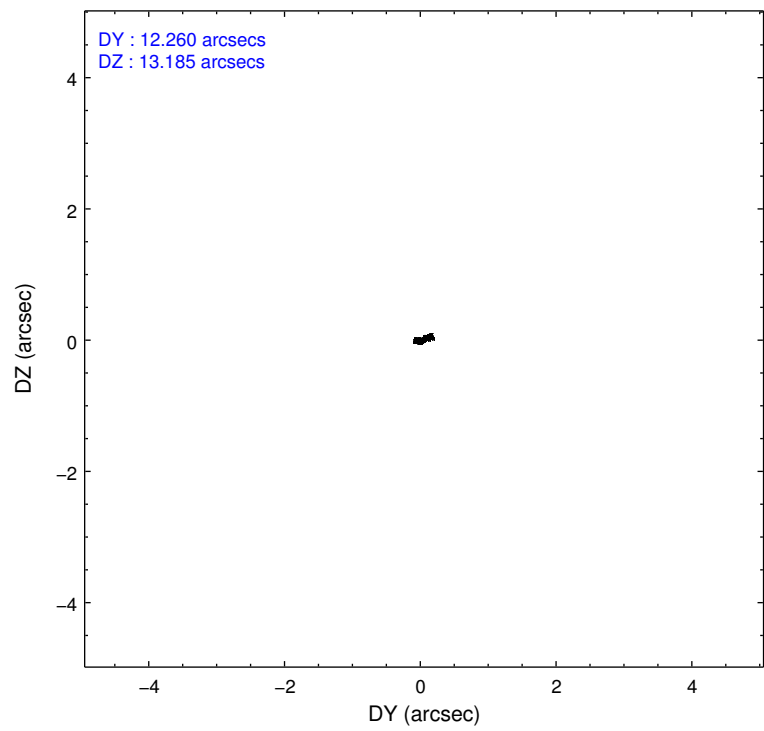
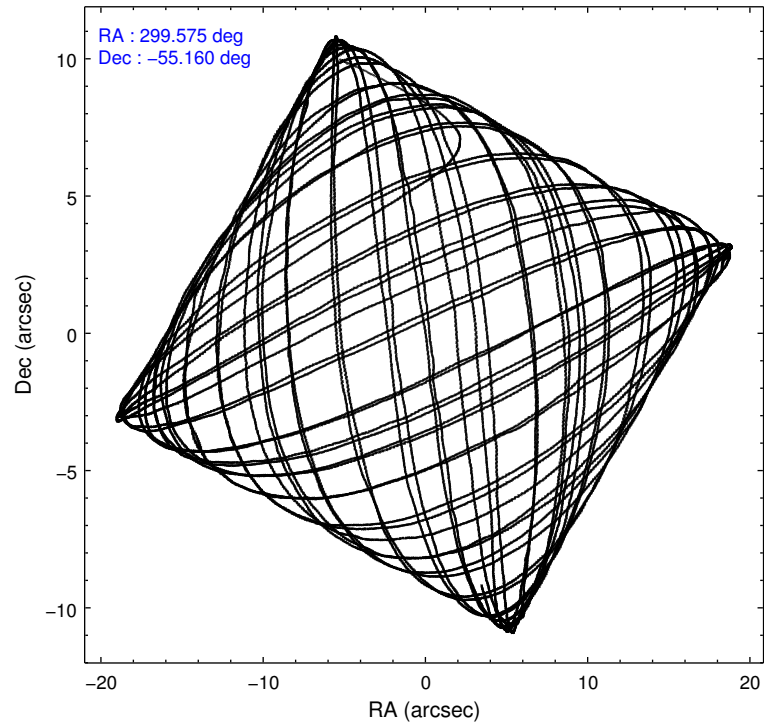
### 2.1.4 Events

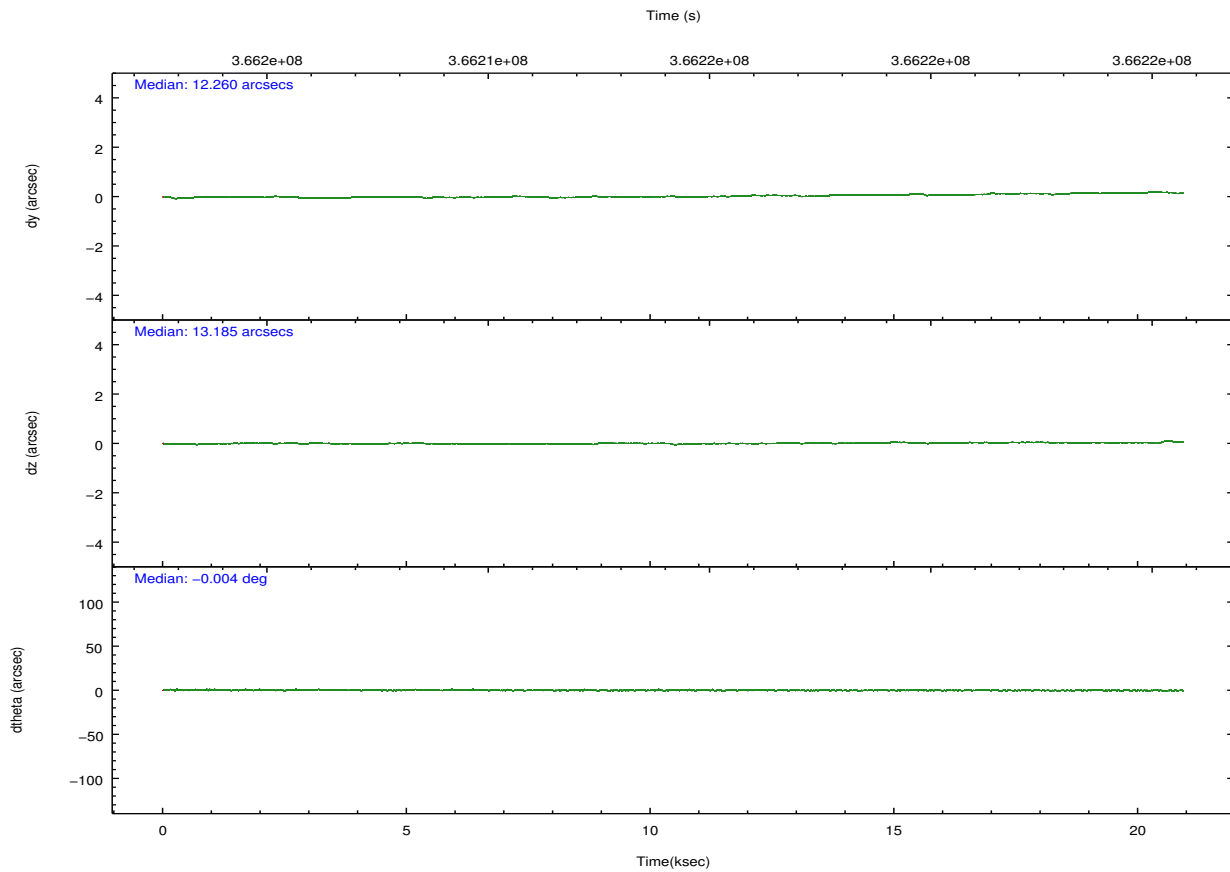
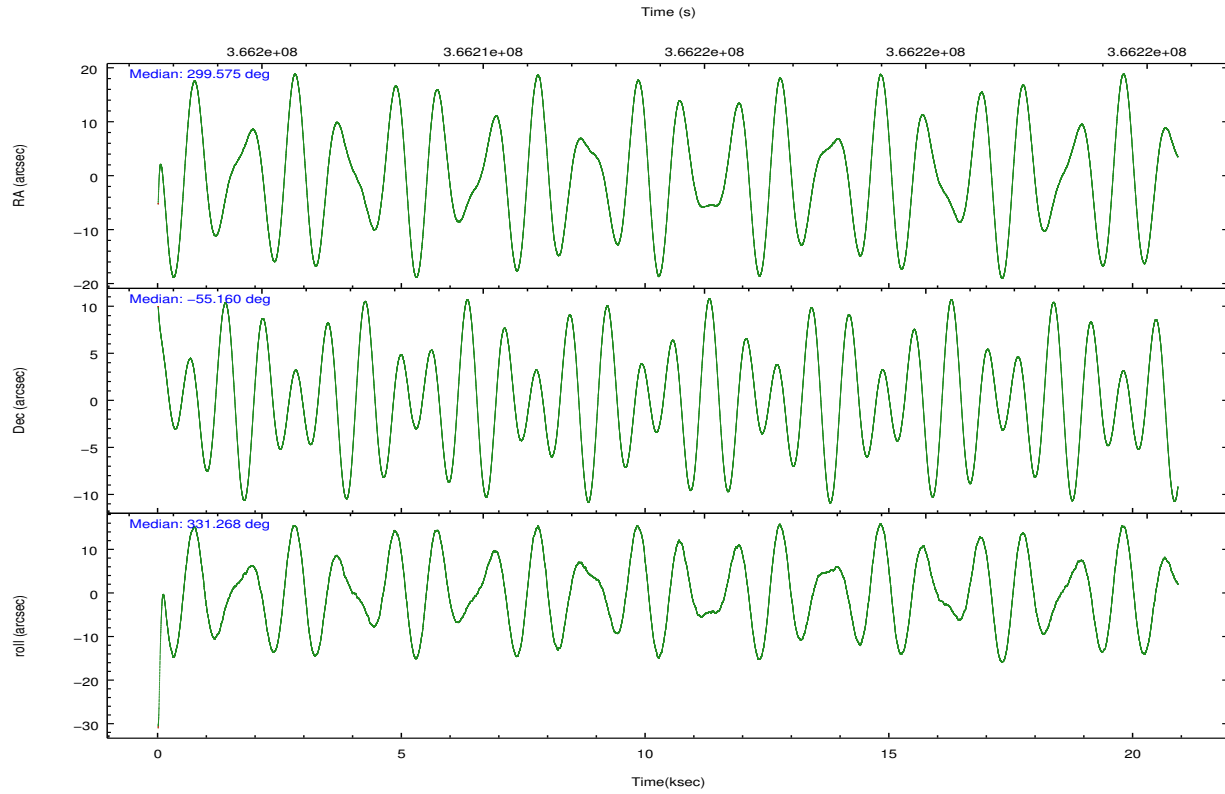
	ccd 2	ccd 3	ccd 5	ccd 6	ccd 7	ccd 8		ccd 2	ccd 3	ccd 5	ccd 6	ccd 7	ccd 8
level 1 events	196446	175415	261655	186213	217174	228772	grade 0 events	6976	6649	13298	7974	11573	16792
rejected events	178450	158129	135558	166315	116373	173557		3%	3%	5%	4%	5%	7%
rejected %	90%	90%	51%	89%	53%	75%	grade 1 events	119	103	497	95	283	182
								0%	0%	0%	0%	0%	0%
							grade 2 events	4510	3850	39553	4353	21851	13496
								2%	2%	15%	2%	10%	5%
							grade 3 events	1915	2028	5230	2037	9703	6272
								0%	1%	1%	1%	4%	2%
							grade 4 events	1882	1868	5049	2043	9661	5558
								0%	1%	1%	1%	4%	2%
							grade 5 events	6269	7425	20091	7439	22088	10942
								3%	4%	7%	3%	10%	4%
							grade 6 events	3419	3593	67911	4247	51591	15210
								1%	2%	25%	2%	23%	6%
							grade 7 events	171356	149899	110026	158025	90424	160320
								87%	85%	42%	84%	41%	70%

## 2.2 Compared Parameters

Parameter	Planned	Actual	Parameter	Planned	Actual
Instrument	ACIS	ACIS	Obspar format version number	7	7
Detector	ACIS-235678	ACIS-235678	Obspar file type	PREDICTED	ACTUAL
Grating	NONE	NONE	Obspar update status	NONE	UPDATED
Data mode	VFAINT	VFAINT	CCD I0 on	N	N
Observation mode	POINTING	POINTING	CCD I1 on	N	N
[deg] Pointing RA	299.527722	299.5755408346307	CCD I2 on	O1	Y
[deg] Pointing Dec	-55.161138	-55.16016504520572	CCD I3 on	O2	Y
[deg] Pointing Roll	331.076006	331.271860337309	CCD S0 on	N	N
[mm] SIM focus pos	-0.684267	-0.6828225247311905	CCD S1 on	O3	Y
[mm] SIM defocus	0	0.001444936568705701	CCD S2 on	Y	Y
[mm] SIM translation stage pos	-190.132523	-190.1425803651734	CCD S3 on	Y	Y
[mm] SIM translation stage offset	0	0.01005778216563158	CCD S4 on	Y	Y
[s] Observation start time (MET)	366203885.184000	366202416.63327	CCD S5 on	N	N
Observation start date	2009-08-09T11:16:59	2009-08-09T10:53:36	Number of optional ACIS chips dropped	0	0
[s] Observation end time (MET)	366224643.184000	366224865.67189	On-chip summing requested	N	N
Observation end date	2009-08-09T17:02:57	2009-08-09T17:07:45	Subarray requested	NONE	NONE
Read mode	TIMED	TIMED	Alternating exposures requested	N	N
			[s] Primary exposure time	0.000000	3.2

## 2.3 Aspect



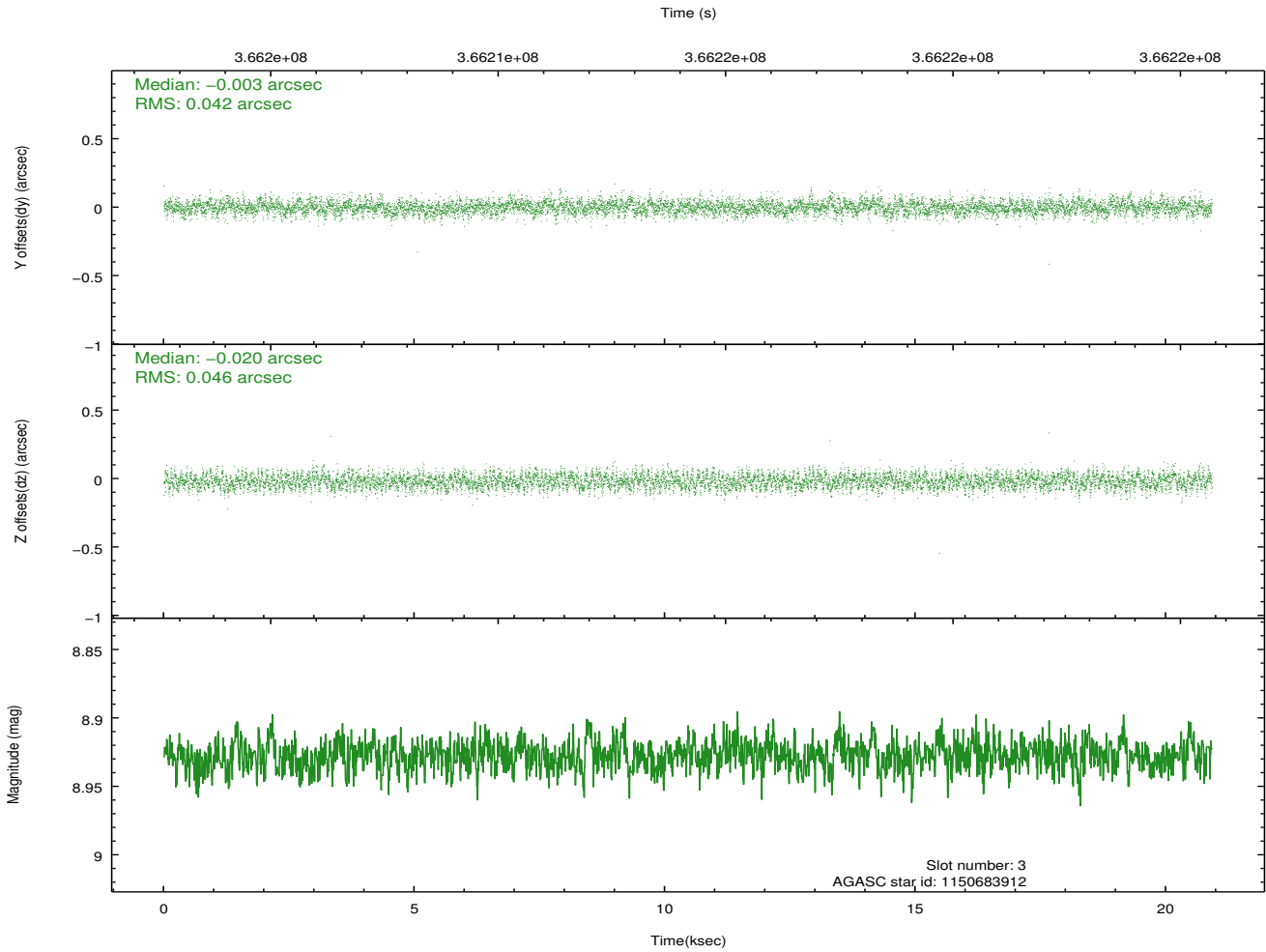
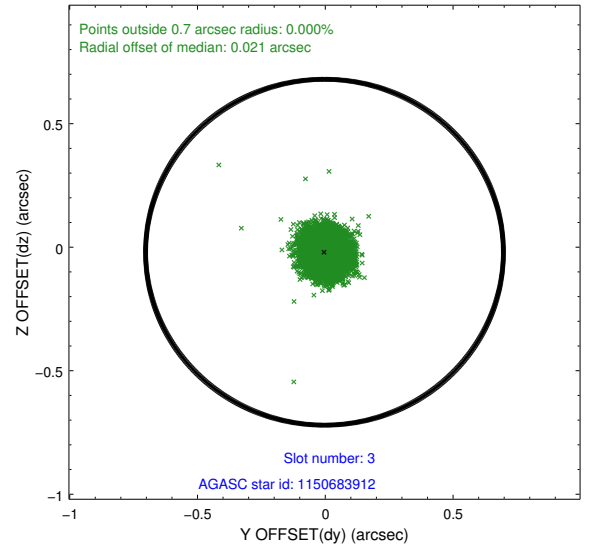
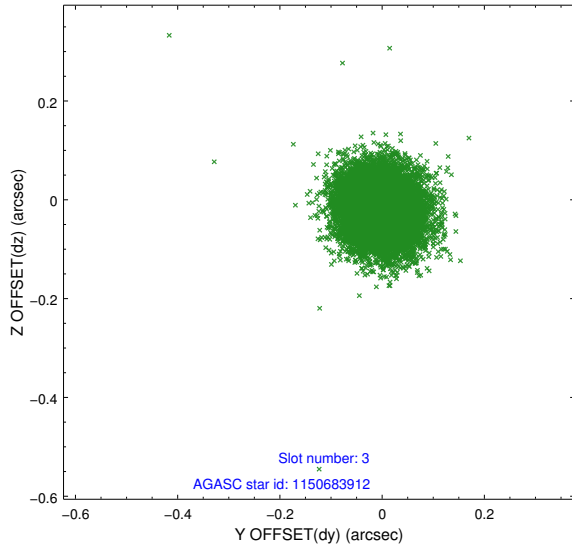


### Slot Statistics

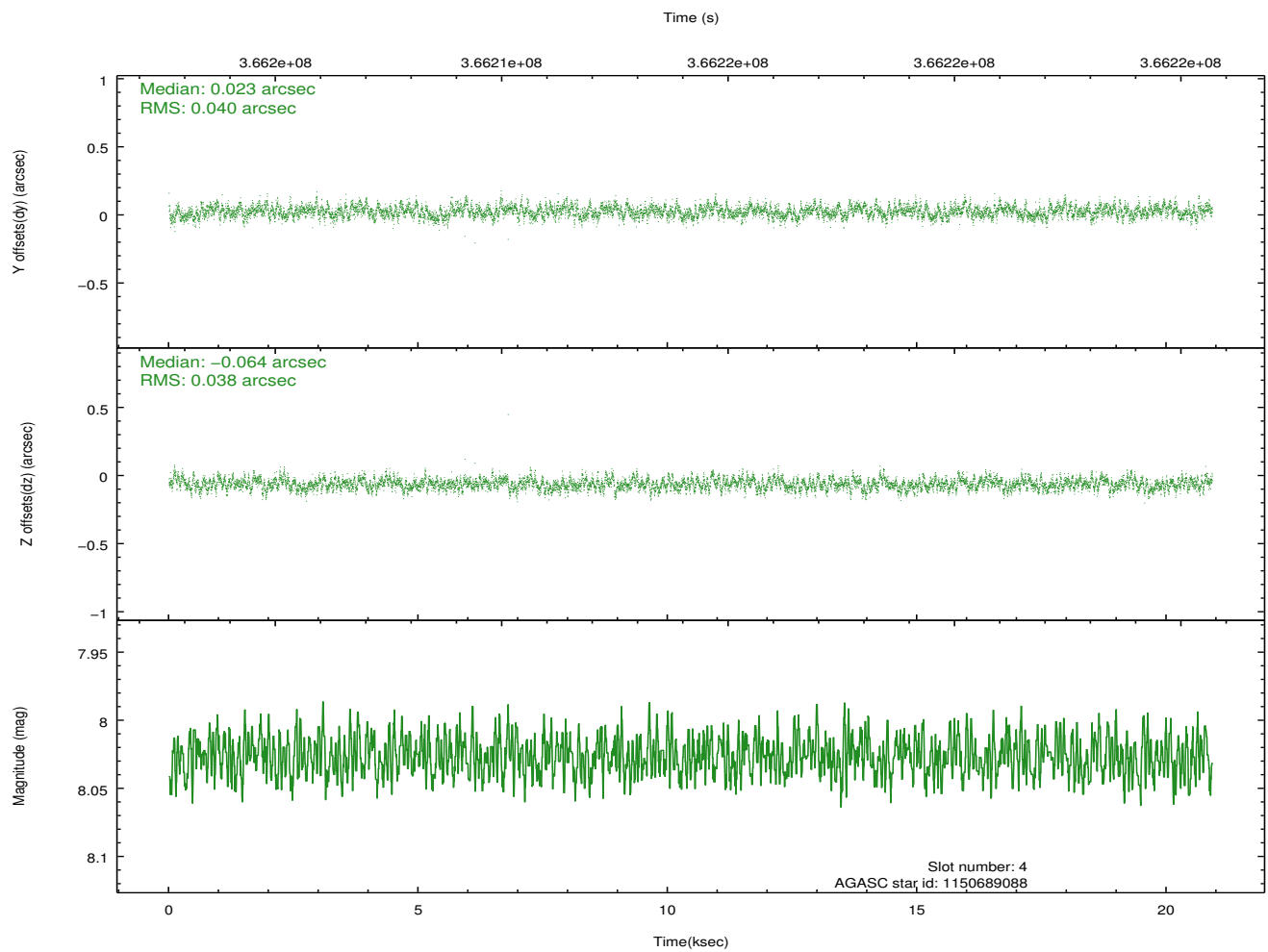
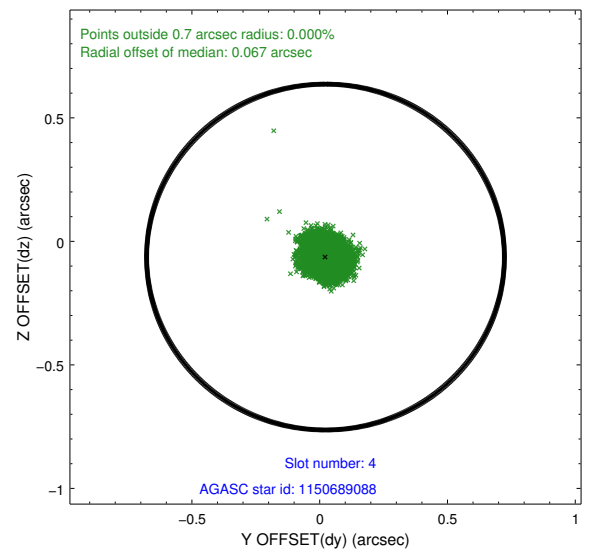
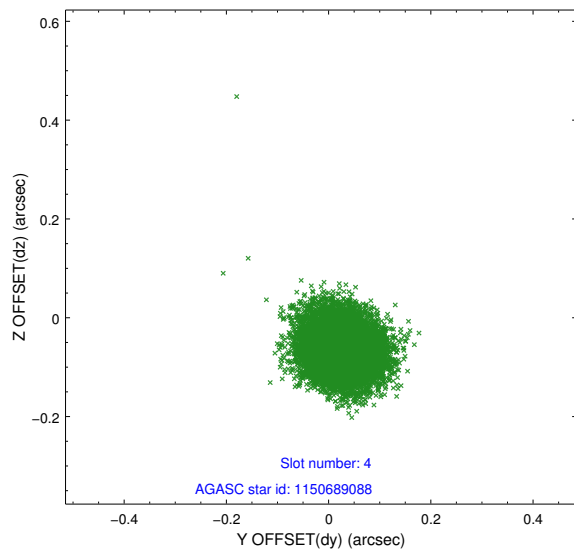
slot	status	id	mag	n_pts	med_dy	med_dz	dr1	dr2	ra	dec	mean_y	mean_z
0	FID	ACIS-S-2	6.98	5103	-0.019	-0.049	0.006	0.010	0.000000	0.000000	-765.21	-1734.51
1	FID	ACIS-S-4	7.06	5102	0.124	0.022	0.005	0.010	0.000000	0.000000	2148.14	173.85
2	FID	ACIS-S-5	7.10	5103	-0.137	0.036	0.007	0.011	0.000000	0.000000	-1817.94	167.75
3	GUIDE	1150683912	8.93	10198	-0.003	-0.020	0.066	0.105	299.373275	-54.904703	-725.83	653.10
4	GUIDE	1150689088	8.03	10202	0.023	-0.064	0.059	0.094	299.854197	-55.045525	390.06	688.16
5	GUIDE	1150694184	9.31	10195	0.148	-0.052	0.097	0.161	299.907639	-55.935666	2020.76	-2071.93
6	GUIDE	1150813080	9.03	10194	0.090	0.160	0.079	0.129	300.433855	-55.521680	2250.54	-253.31
7	GUIDE	1150685296	8.25	10199	-0.253	-0.025	0.062	0.099	297.953238	-55.420860	-2345.19	-2406.16

## 2.4 Star Slots

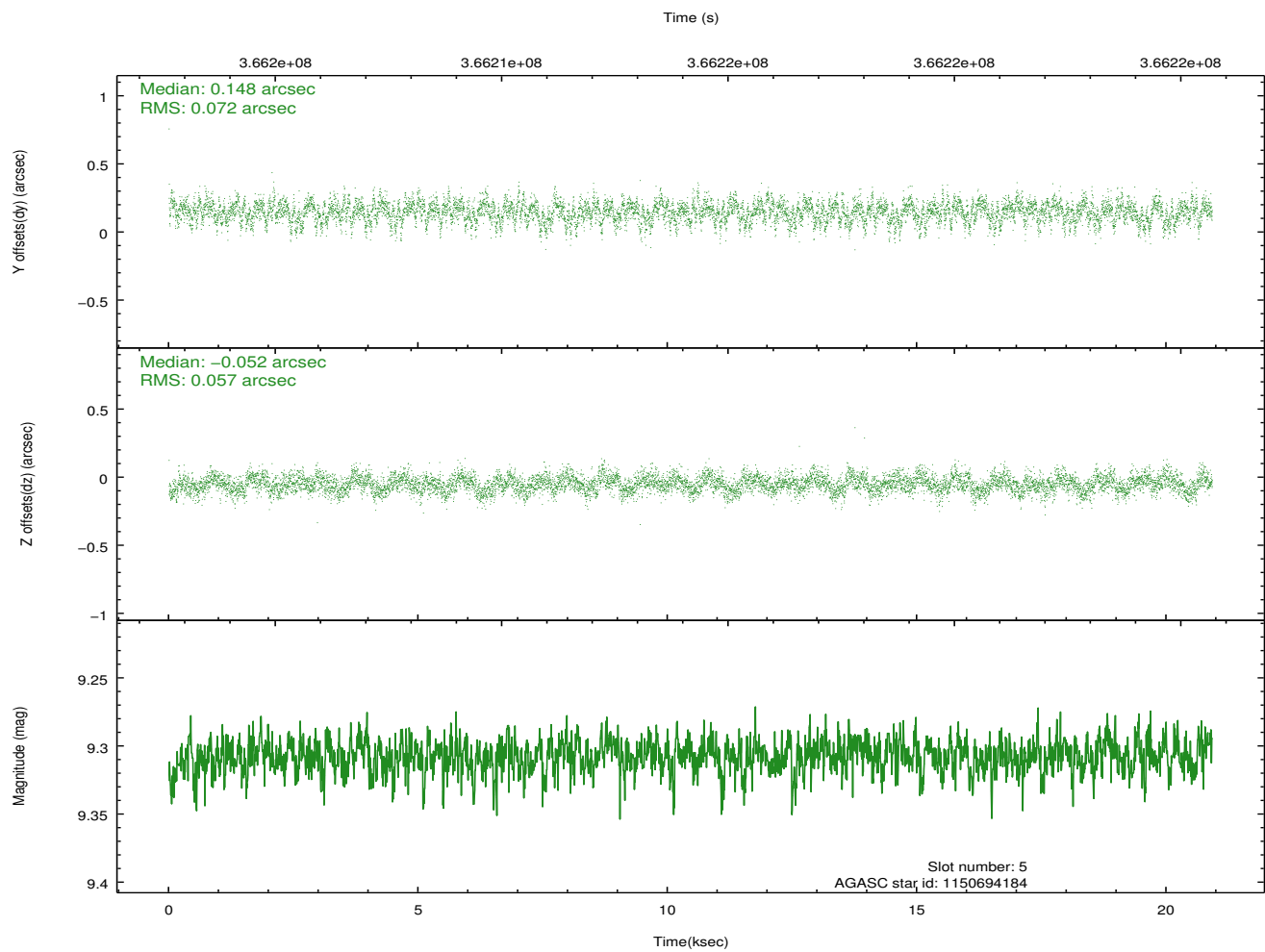
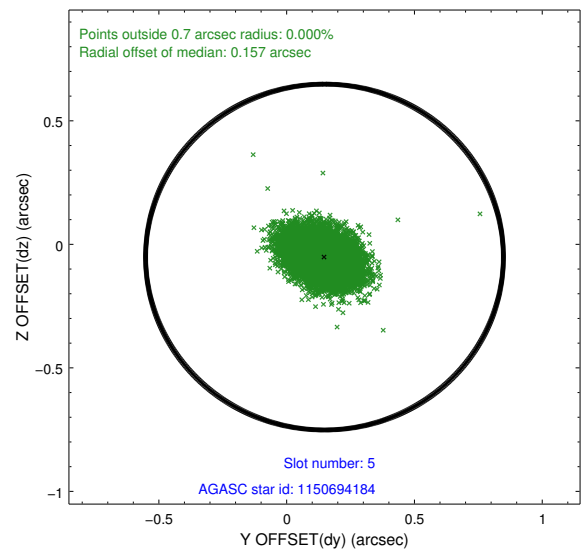
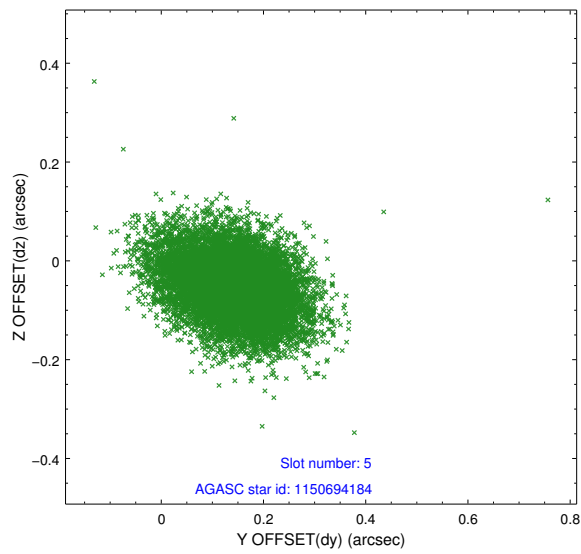
### 2.4.1 Slot 3



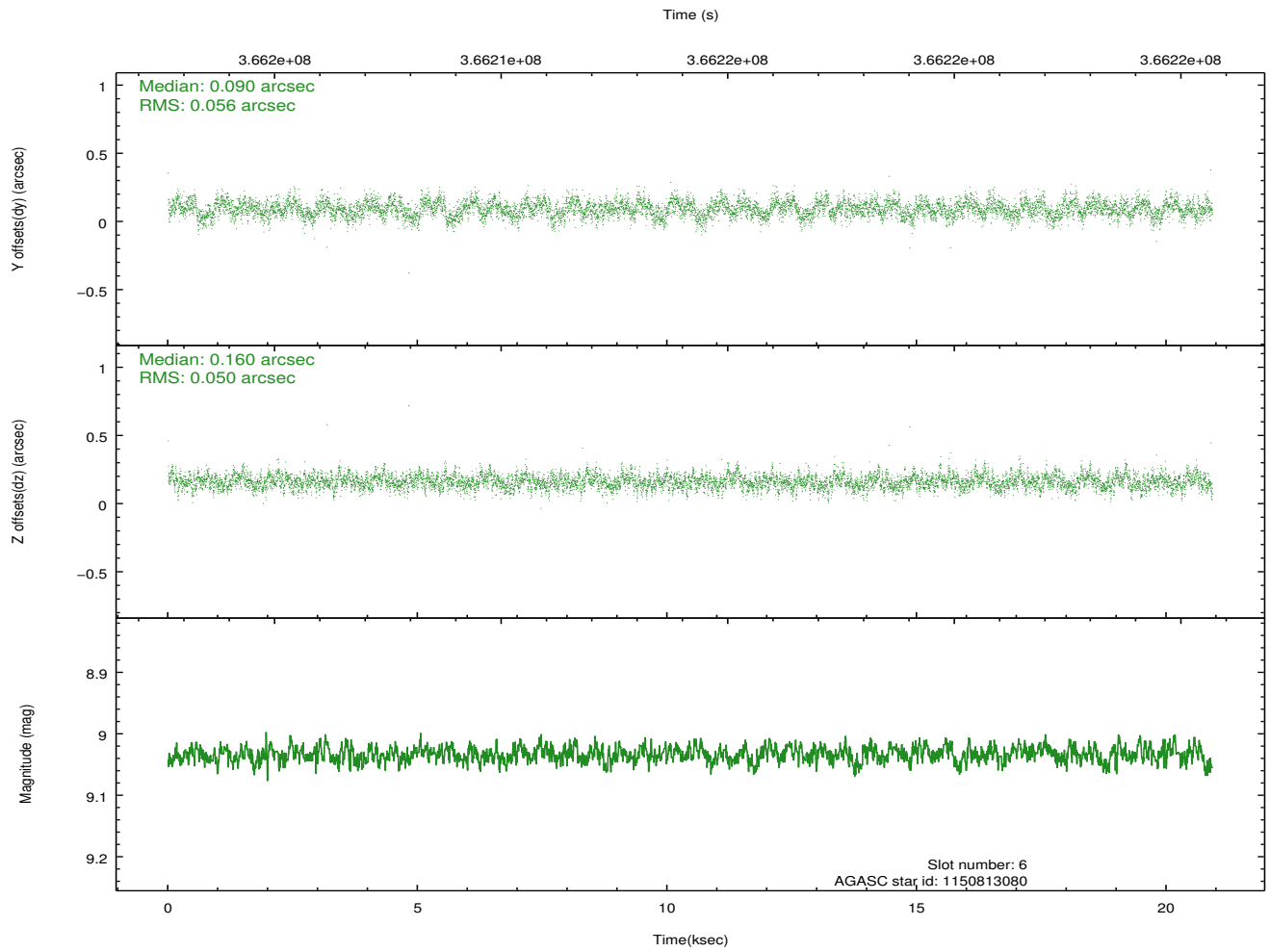
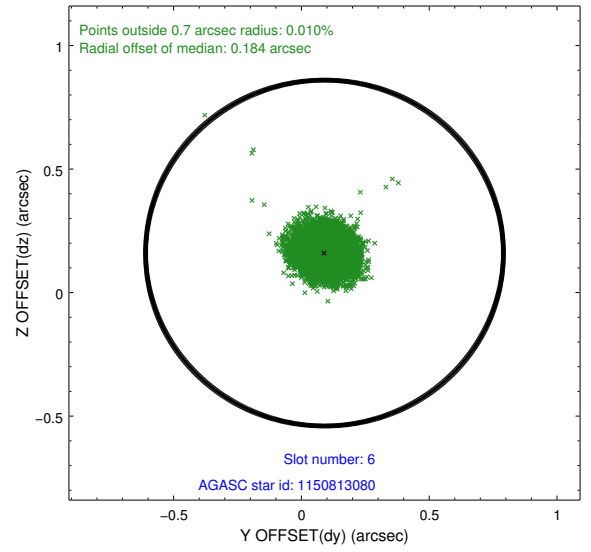
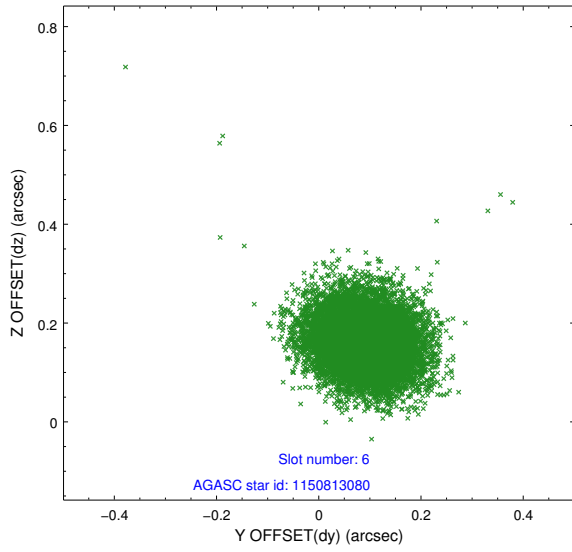
## 2.4.2 Slot 4



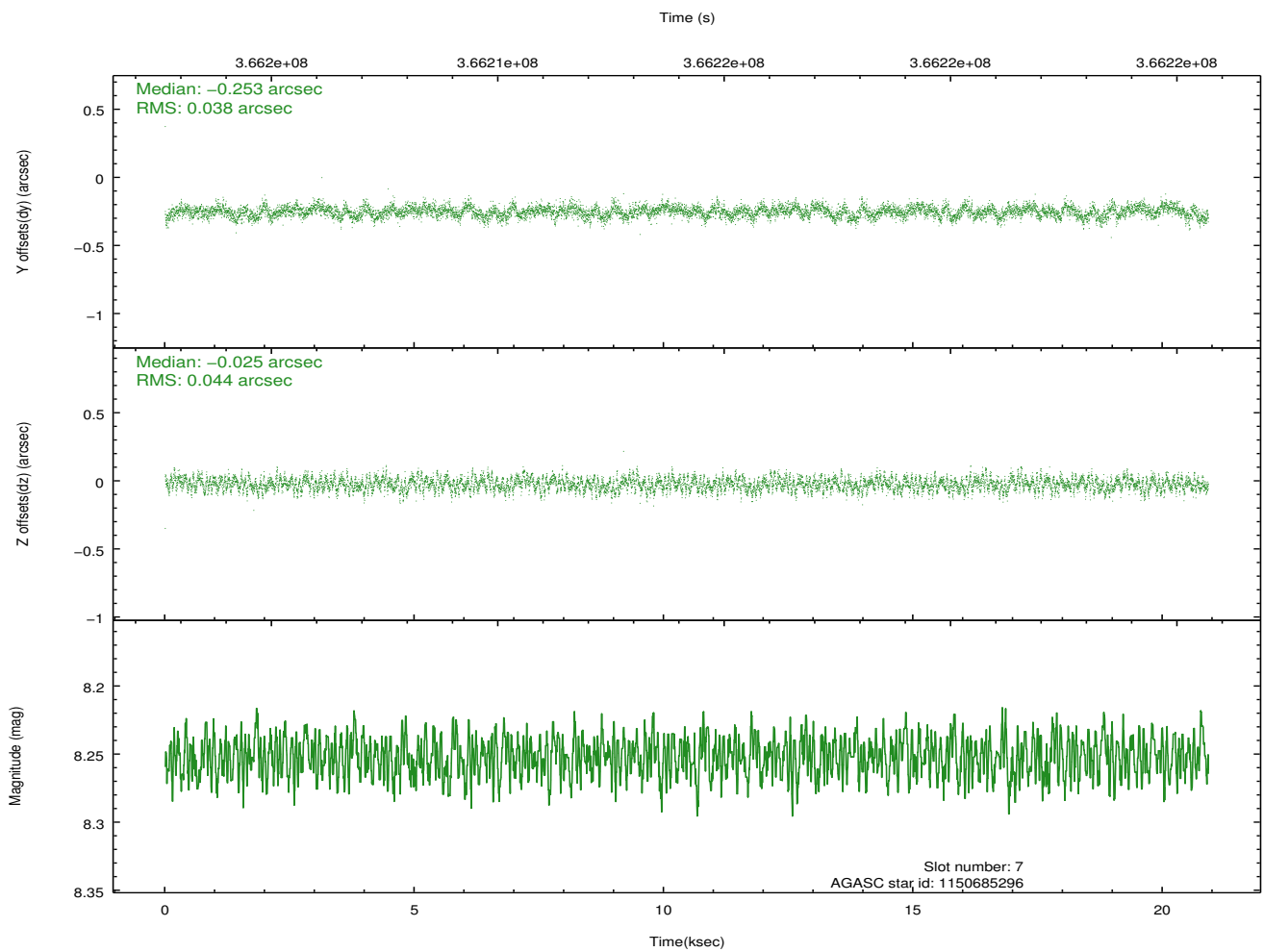
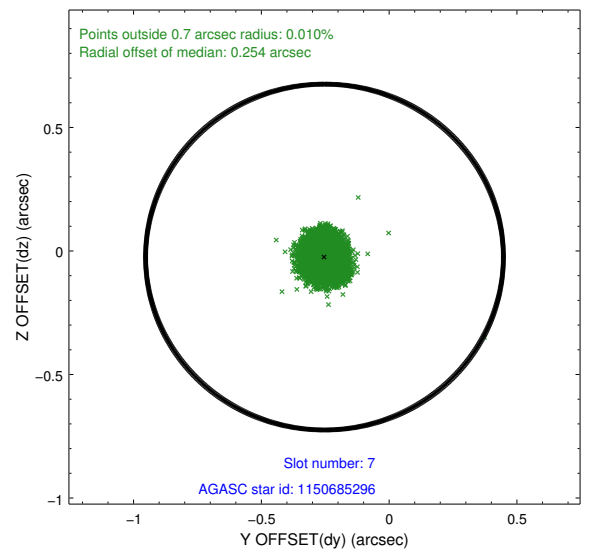
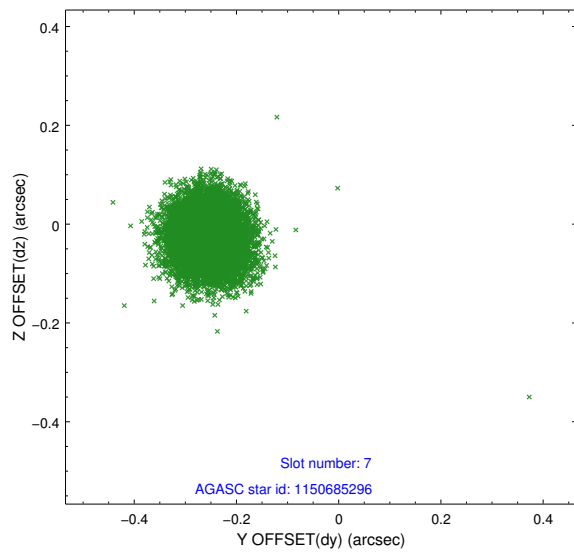
### 2.4.3 Slot 5



## 2.4.4 Slot 6

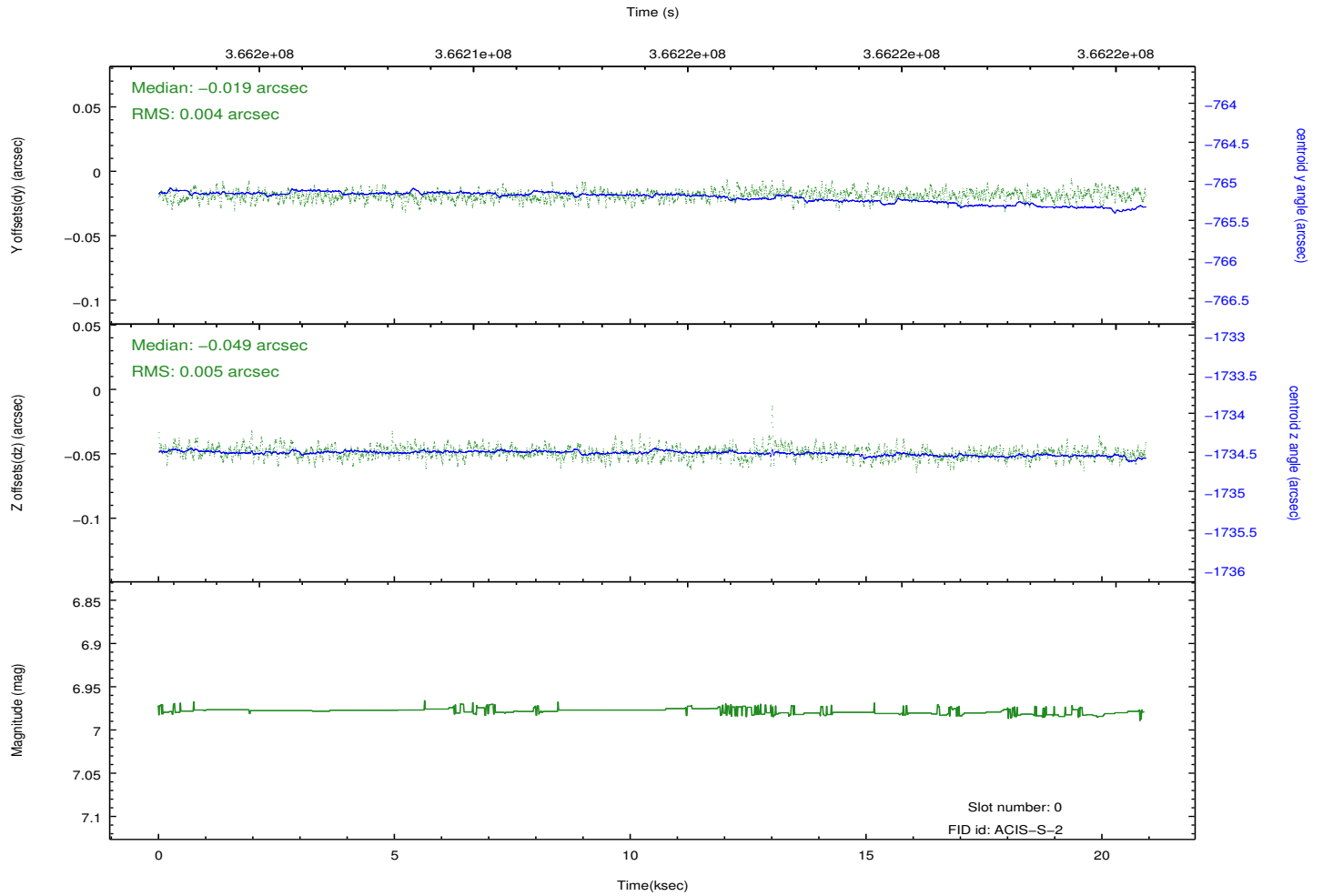
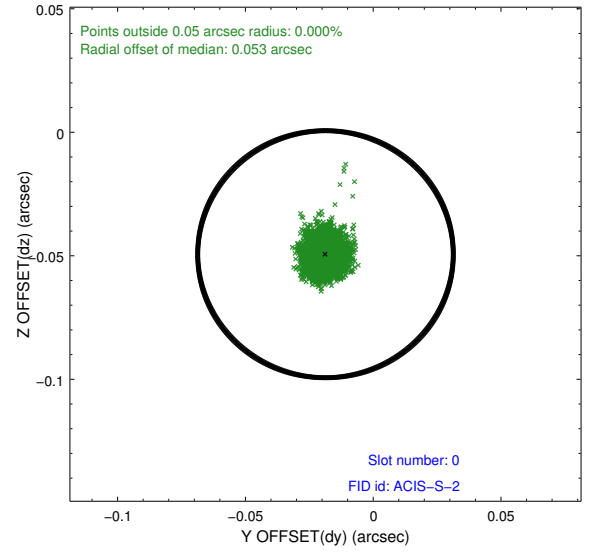
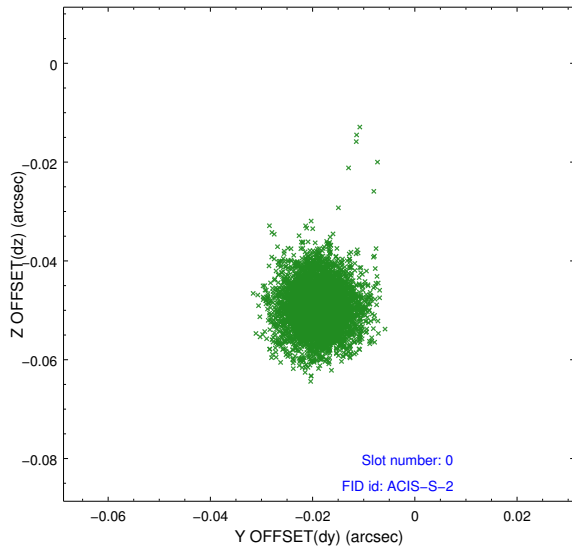


## 2.4.5 Slot 7

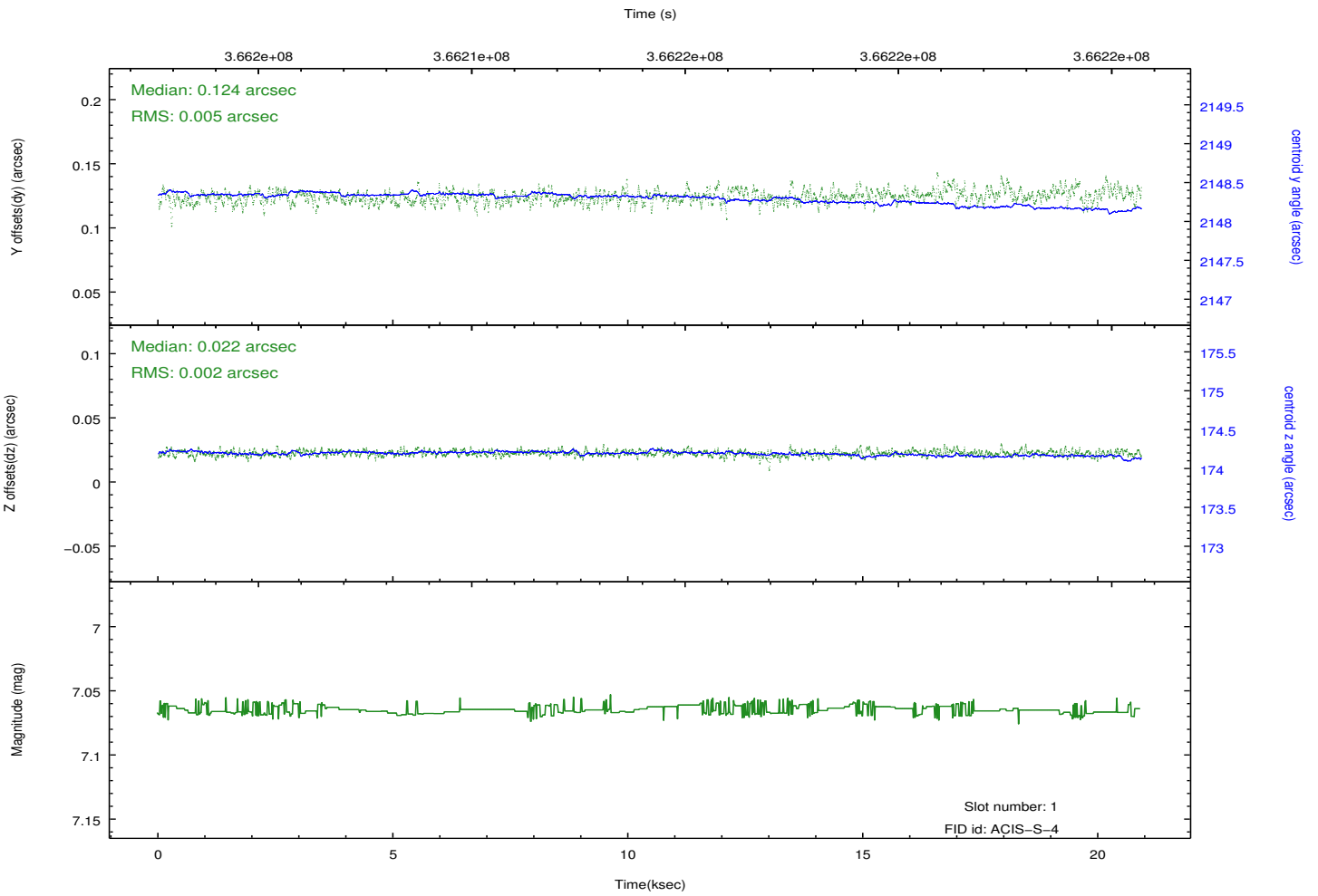
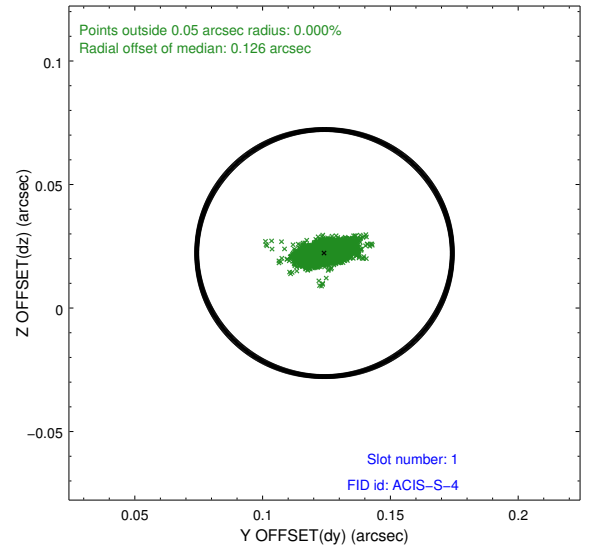
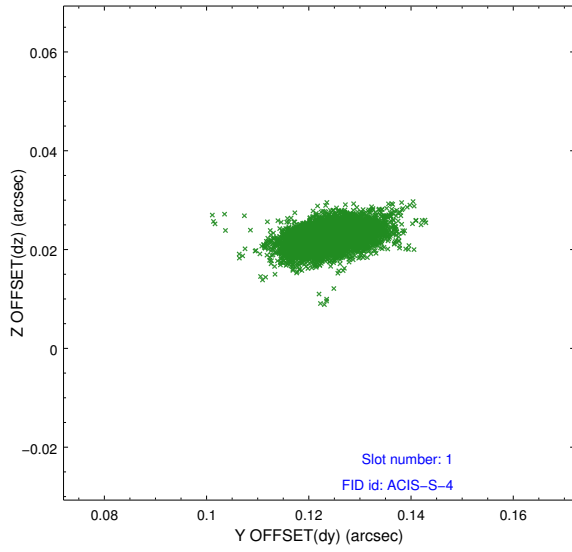


## 2.5 FID Slots

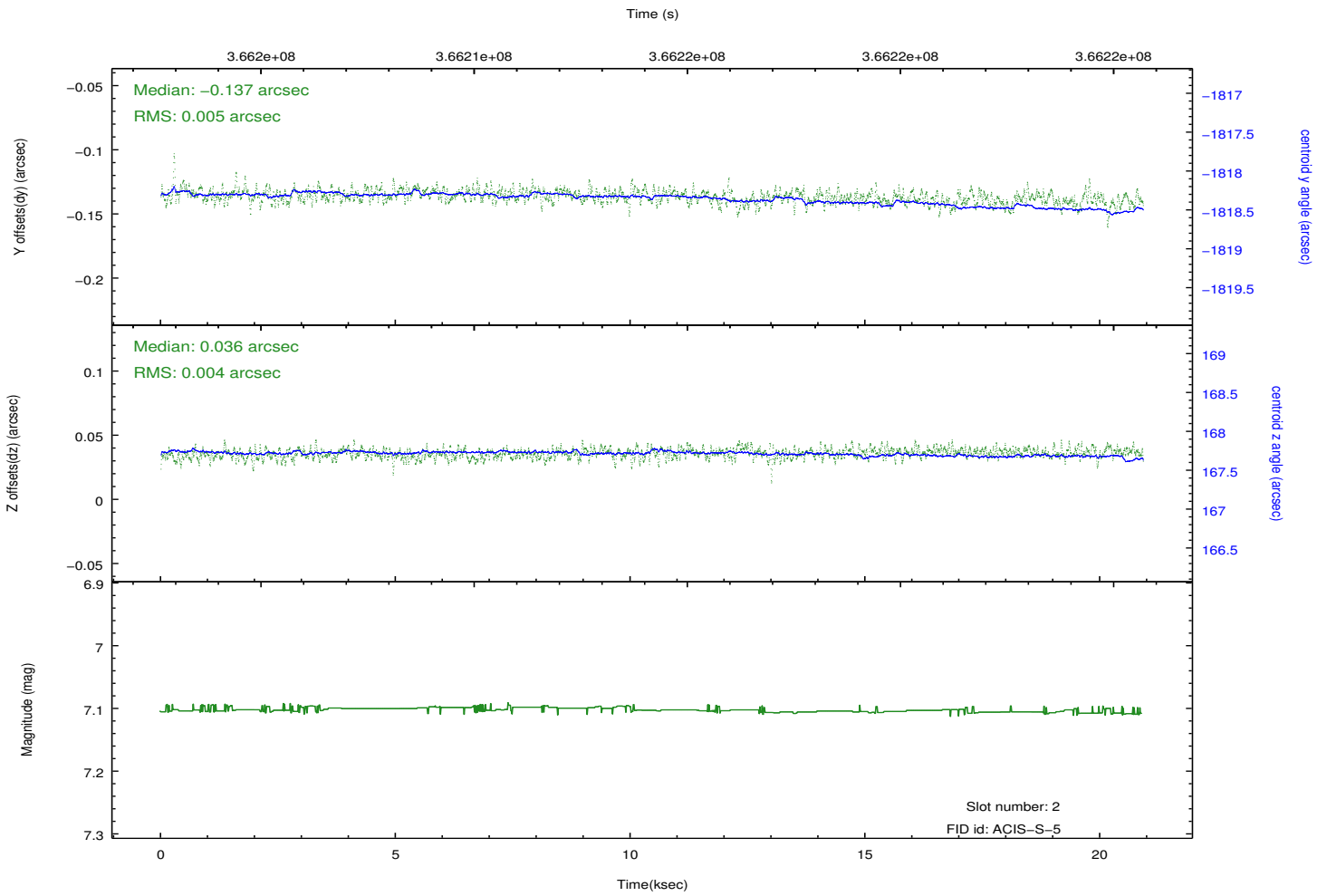
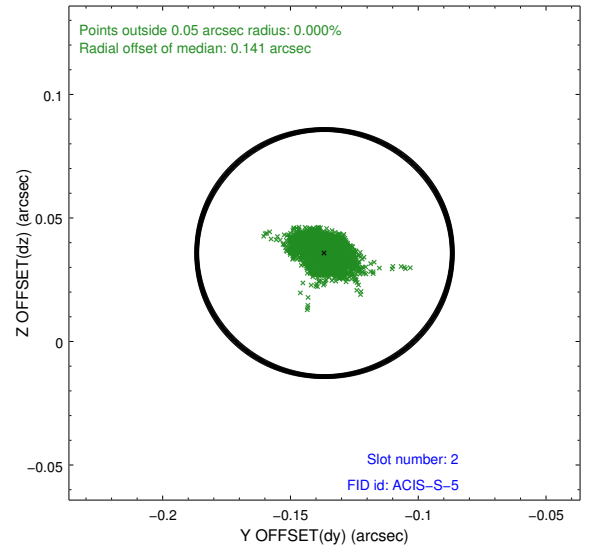
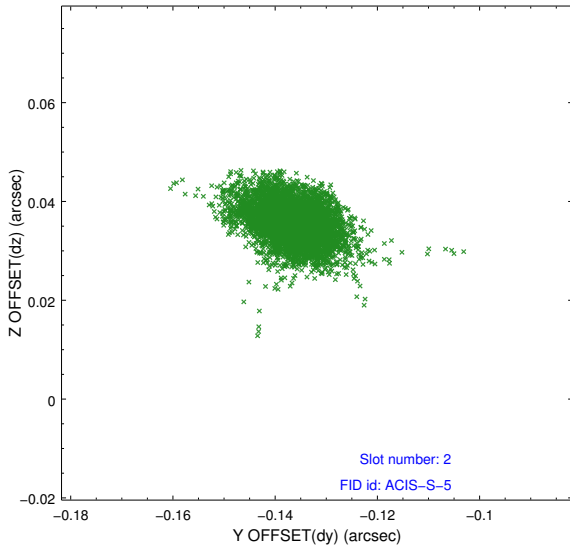
### 2.5.1 Slot 0



## 2.5.2 Slot 1



### 2.5.3 Slot 2



# A Summary

## A.1 Status

V&V Scientist	Beth Sundheim
V&V Date (YYYY-MM-DD)	2012.06.14
V&V Edition	1
V&V Disposition and Status	OK
V&V Charge Time	20.915199922144

## A.2 Comments