

V&V Reference Report

L2 ASCDS Version : 8.4.5

Observation 11735 - L2 Version 2
Chandra X-Ray Center

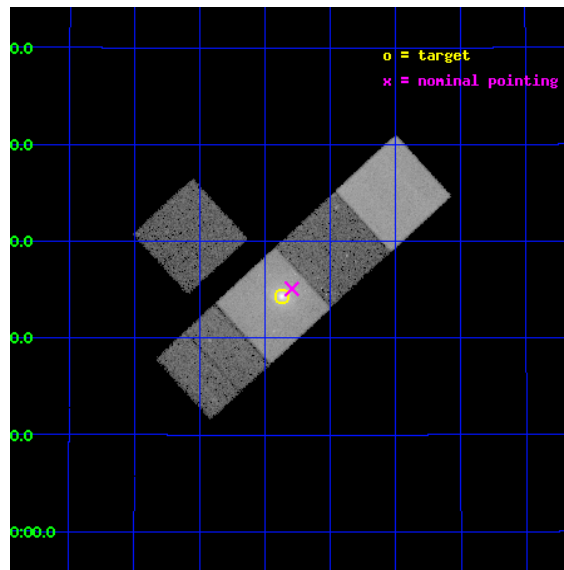
L2 Processing Date : Jun 13 2012

Contents

1	Front	2
2	OBI	3
2.1	OBI	3
2.1.1	Images	3
2.1.2	Bias	3
2.1.3	Parameters	4
2.1.4	Events	4
2.2	Compared Parameters	5
2.3	Aspect	6
2.4	Star Slots	9
2.4.1	Slot 3	9
2.4.2	Slot 4	10
2.4.3	Slot 5	11
2.4.4	Slot 6	12
2.4.5	Slot 7	13
2.5	FID Slots	14
2.5.1	Slot 0	14
2.5.2	Slot 1	15
2.5.3	Slot 2	16
A	Summary	17
A.1	Status	17
A.2	Comments	17

1 Front

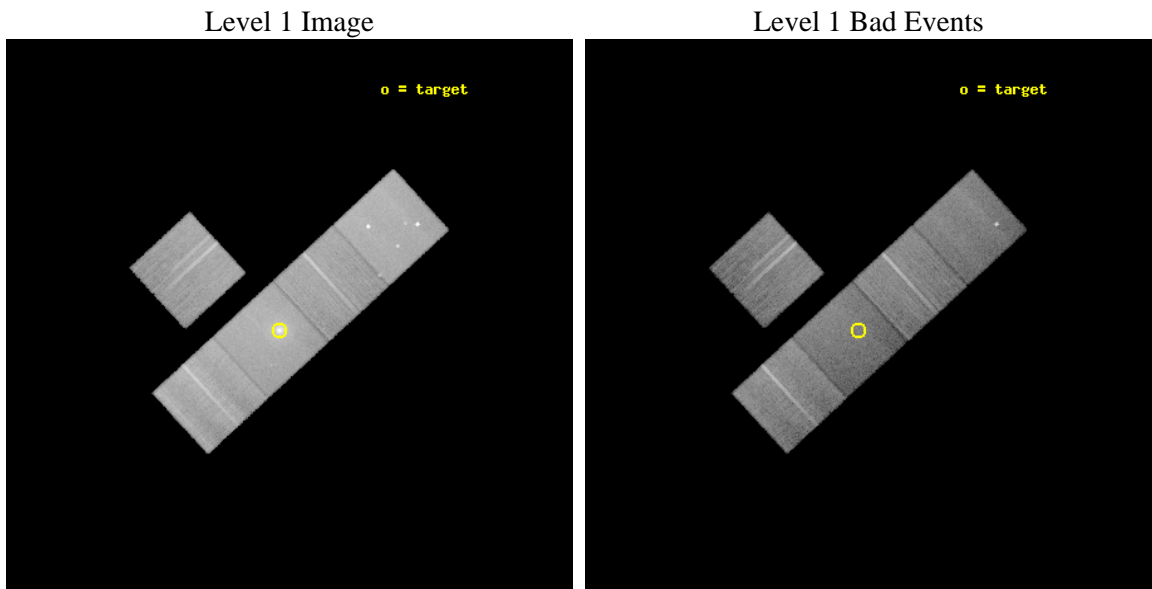
seq_num	800875	Sequence number
obs_id	11735	Observation id
title	Completing the cycle of cooling, star formation and AGN heating in Brightest Cluster Galaxies	Proposal title
observer	Dr Helen Russell	Principal investigator
object	ZwCl 235	Source name
dtcycle	0	
cycle	P	events from which exps? Prim/Second/Both
ra_targ	10.967083	Observer's specified target RA [deg]
dec_targ	24.406111	Observer's specified target Dec [deg]
ra_nom	10.948426998585	Nominal RA [deg]
dec_nom	24.418336579373	Nominal Dec [deg]
roll_nom	137.35307250694	Nominal Roll [deg]
revision	2	Processing version of data
ontime	20077.635340571	Sum of GTIs [s]
livetime	19815.306253907	Livetime [s]
ontime3	20077.512220562	Sum of GTIs [s]
ontime5	20077.594300568	Sum of GTIs [s]
ontime6	20077.553260565	Sum of GTIs [s]
ontime7	20077.635340571	Sum of GTIs [s]
ontime8	20077.471180558	Sum of GTIs [s]
l2events	298206	Number of level 2 events



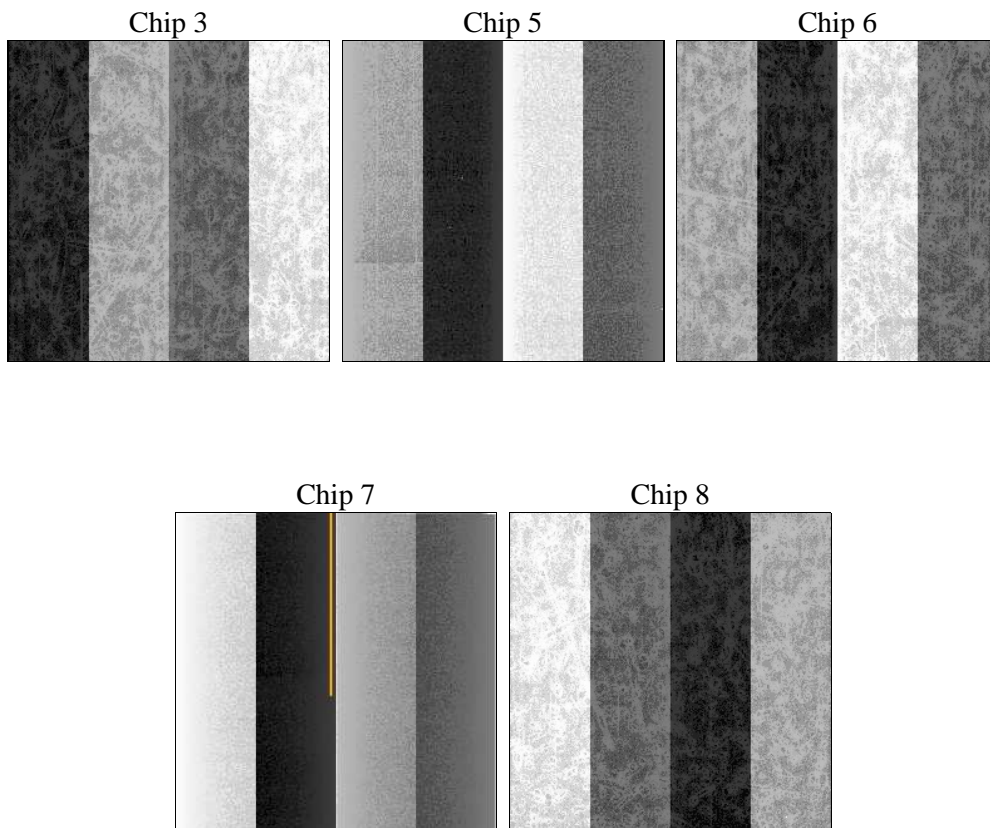
2 OBI

2.1 OBI

2.1.1 Images



2.1.2 Bias



2.1.3 Parameters

obi_num	0	Obi number	sched_exp_time	20000.000000	[s] Scheduled observation exposure time
ascdsver	8.4.5	Processing system revision	ontime	20077.635340571	Sum of GTIs [s]
caldbver	4.4.10	 	ontime3	20077.512220562	Sum of GTIs [s]
date	2012-06-13T03:10:55	Date and time of file creation	ontime5	20077.594300568	Sum of GTIs [s]
revision	2	Processing version of data	ontime6	20077.553260565	Sum of GTIs [s]
			ontime7	20077.635340571	Sum of GTIs [s]
			ontime8	20077.471180558	Sum of GTIs [s]
			l1events	1066607	Number of level 1 events

2.1.4 Events

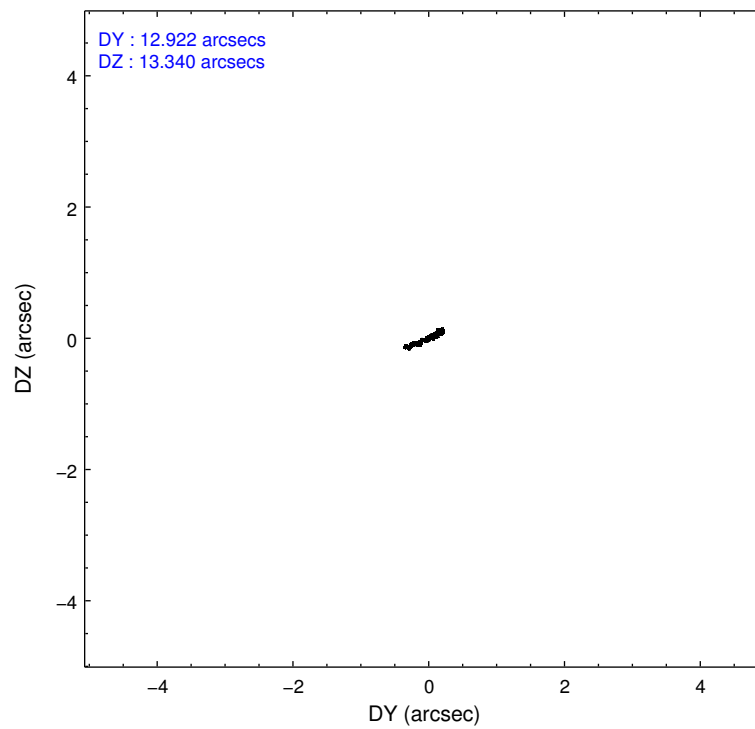
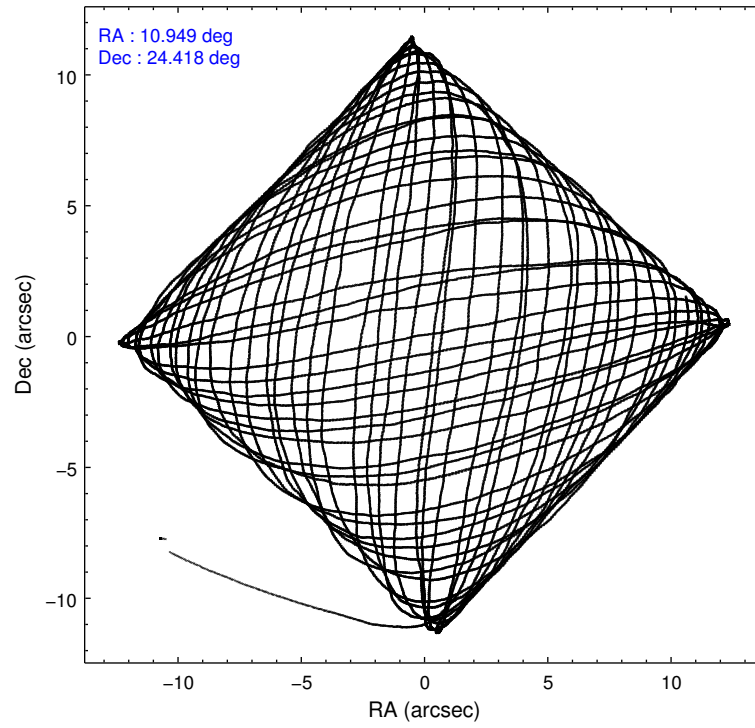
	ccd 3	ccd 5	ccd 6	ccd 7	ccd 8
level 1 events	167259	257236	178602	243095	220415
rejected events	150889	128346	158336	110195	165516
rejected %	90%	49%	88%	45%	75%

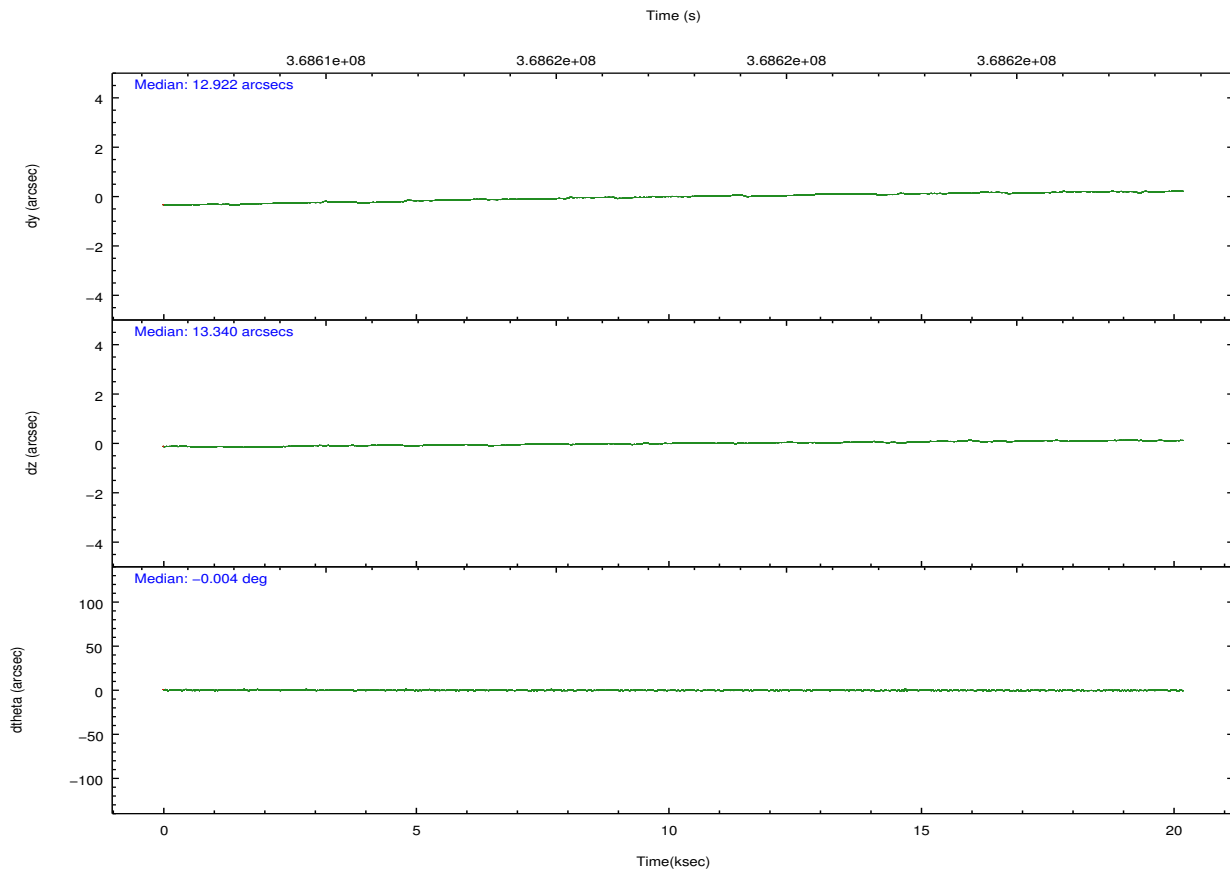
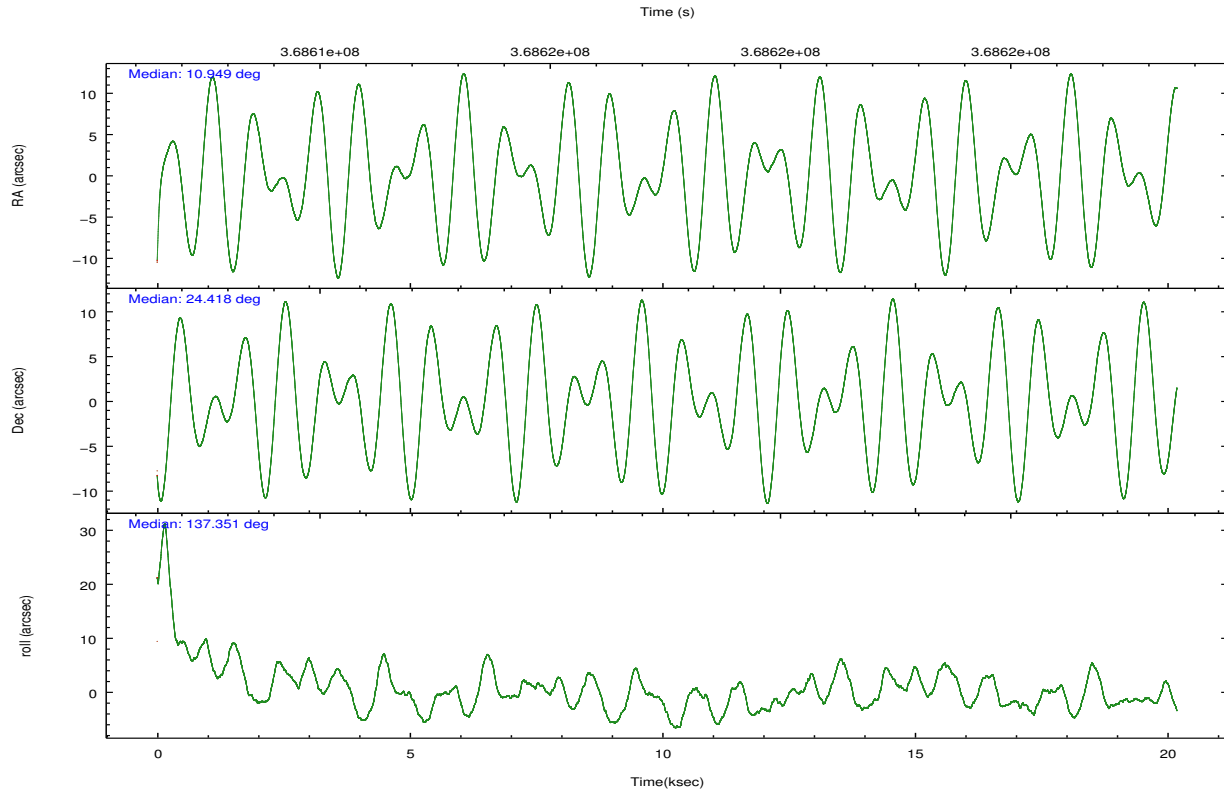
	ccd 3	ccd 5	ccd 6	ccd 7	ccd 8
grade 0 events	5787	15254	8005	21474	16750
	3%	5%	4%	8%	7%
grade 1 events	86	527	91	286	176
	0%	0%	0%	0%	0%
grade 2 events	3520	39749	4261	29893	12844
	2%	15%	2%	12%	5%
grade 3 events	1870	4753	2016	13169	5803
	1%	1%	1%	5%	2%
grade 4 events	1803	4572	1879	12941	5165
	1%	1%	1%	5%	2%
grade 5 events	7098	19862	7188	21382	10493
	4%	7%	4%	8%	4%
grade 6 events	3397	64601	4107	55462	14341
	2%	25%	2%	22%	6%
grade 7 events	143698	107918	151055	88488	154843
	85%	41%	84%	36%	70%

2.2 Compared Parameters

Parameter	Planned	Actual	Parameter	Planned	Actual
Instrument	ACIS	ACIS	Obspar format version number	7	7
Detector	ACIS-35678	ACIS-35678	Obspar file type	PREDICTED	ACTUAL
Grating	NONE	NONE	Obspar update status	NONE	UPDATED
Data mode	VFAINT	VFAINT	CCD I0 on	N	N
Observation mode	POINTING	POINTING	CCD I1 on	N	N
[deg] Pointing RA	10.977812	10.94842699858541	CCD I2 on	N	N
[deg] Pointing Dec	24.412735	24.41833657937334	CCD I3 on	O1	Y
[deg] Pointing Roll	137.184311	137.3530725069419	CCD S0 on	N	N
[mm] SIM focus pos	-0.684267	-0.6828225247311905	CCD S1 on	Y	Y
[mm] SIM defocus	0	0.001444936568705701	CCD S2 on	Y	Y
[mm] SIM translation stage pos	-190.132523	-190.145094680475	CCD S3 on	Y	Y
[mm] SIM translation stage offset	0	0.01257209746719923	CCD S4 on	O2	Y
[s] Observation start time (MET)	368607632.184000	368606680.32872	CCD S5 on	N	N
Observation start date	2009-09-06T06:59:26	2009-09-06T06:44:40	Number of optional ACIS chips dropped	0	0
[s] Observation end time (MET)	368627632.184000	368628374.9673	On-chip summing requested	N	N
Observation end date	2009-09-06T12:32:46	2009-09-06T12:46:14	Subarray requested	NONE	NONE
Read mode	TIMED	TIMED	Alternating exposures requested	N	N
			[s] Primary exposure time	0.000000	3.1

2.3 Aspect



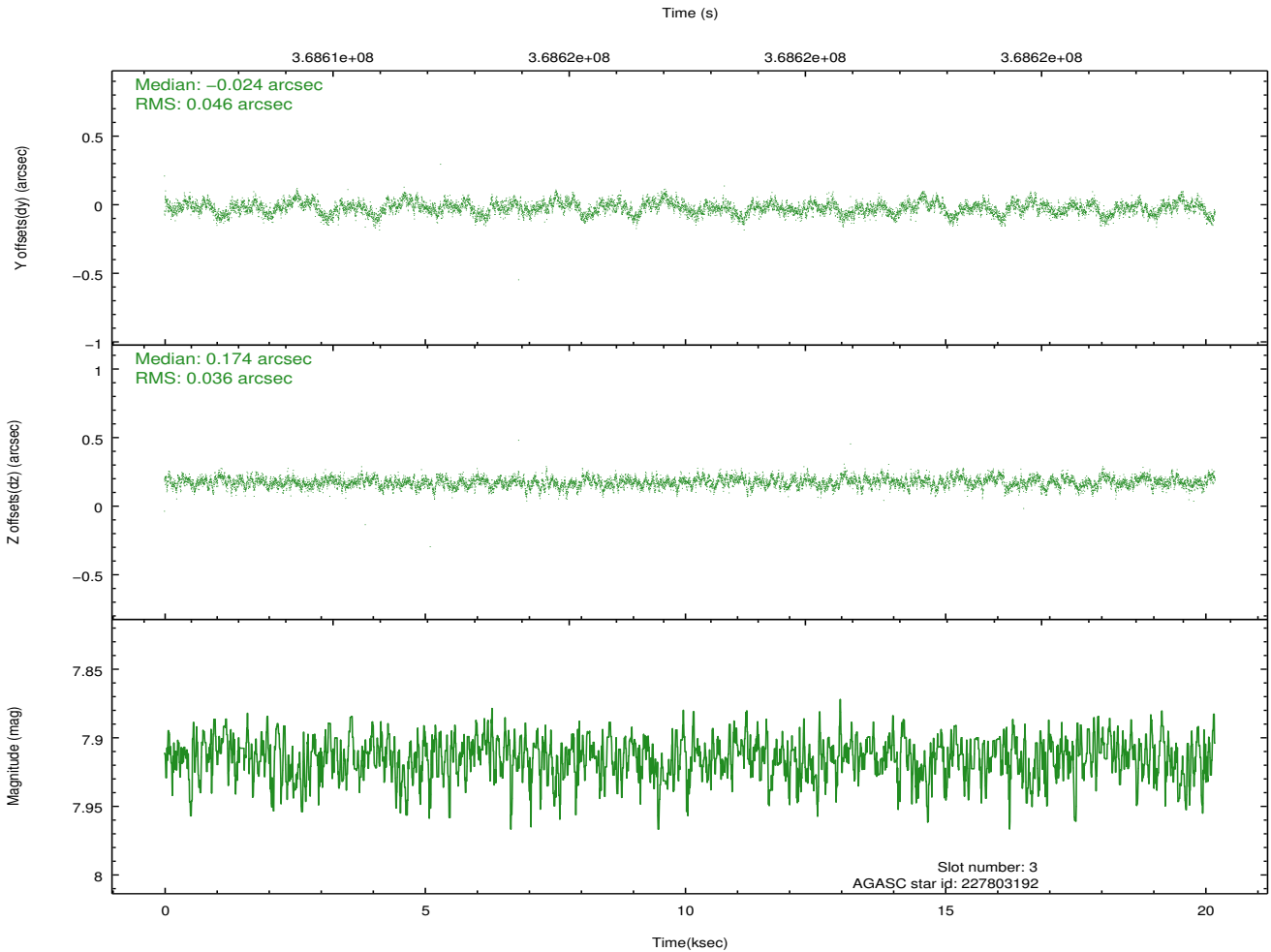
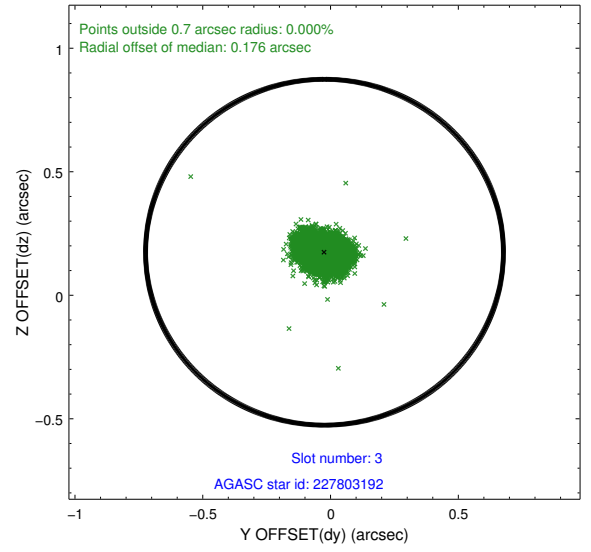
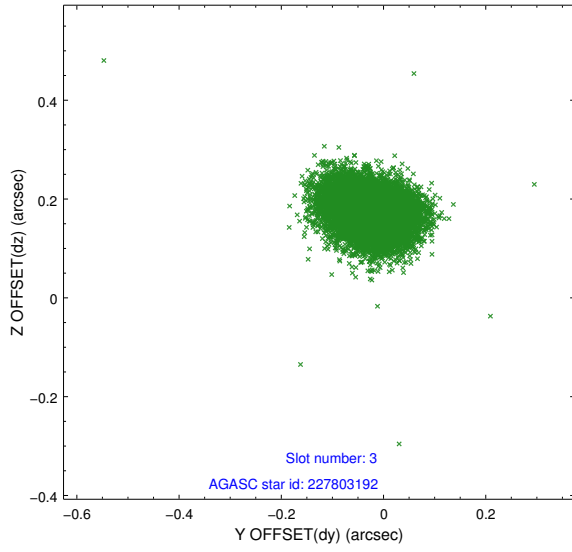


Slot Statistics

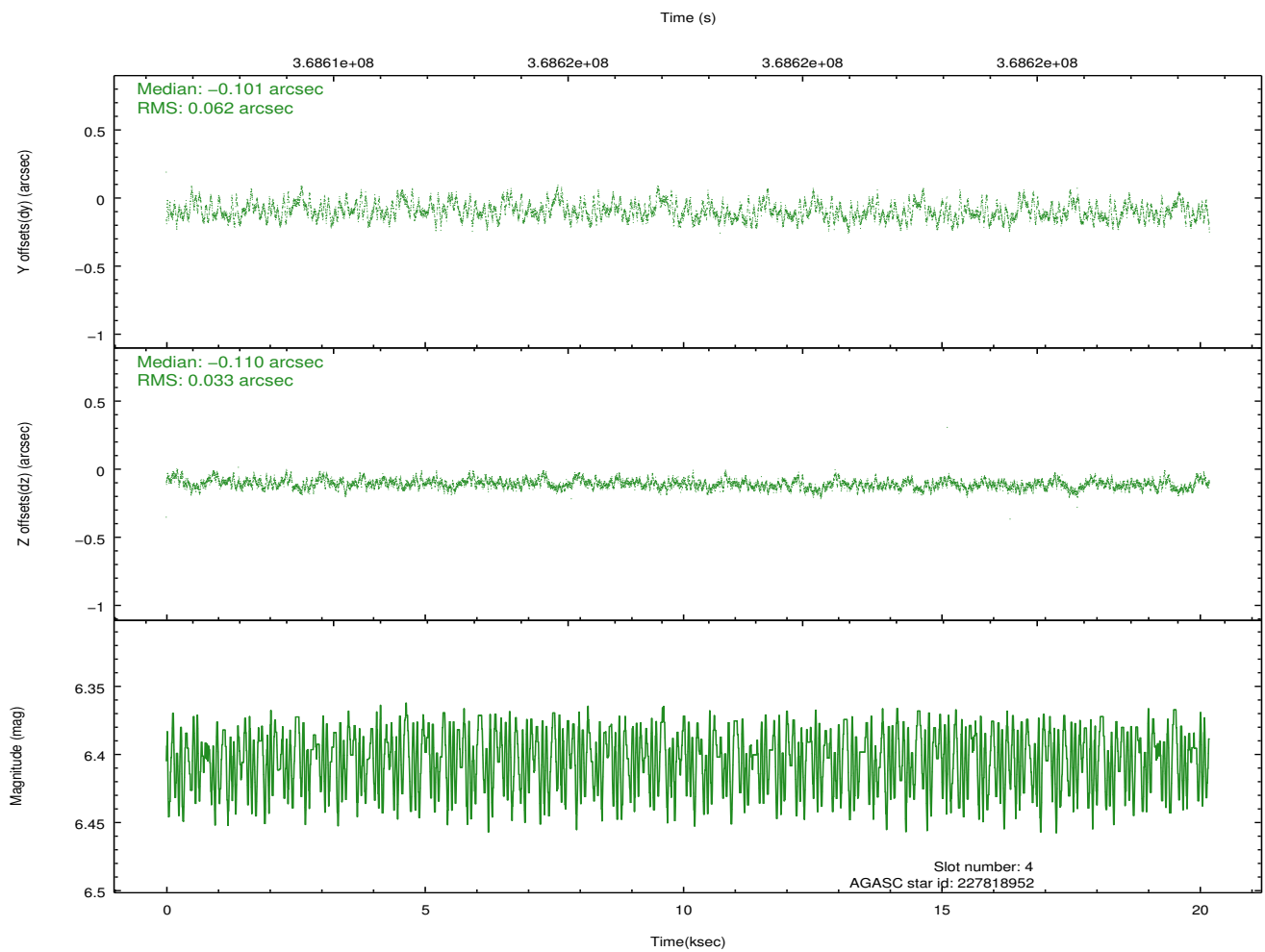
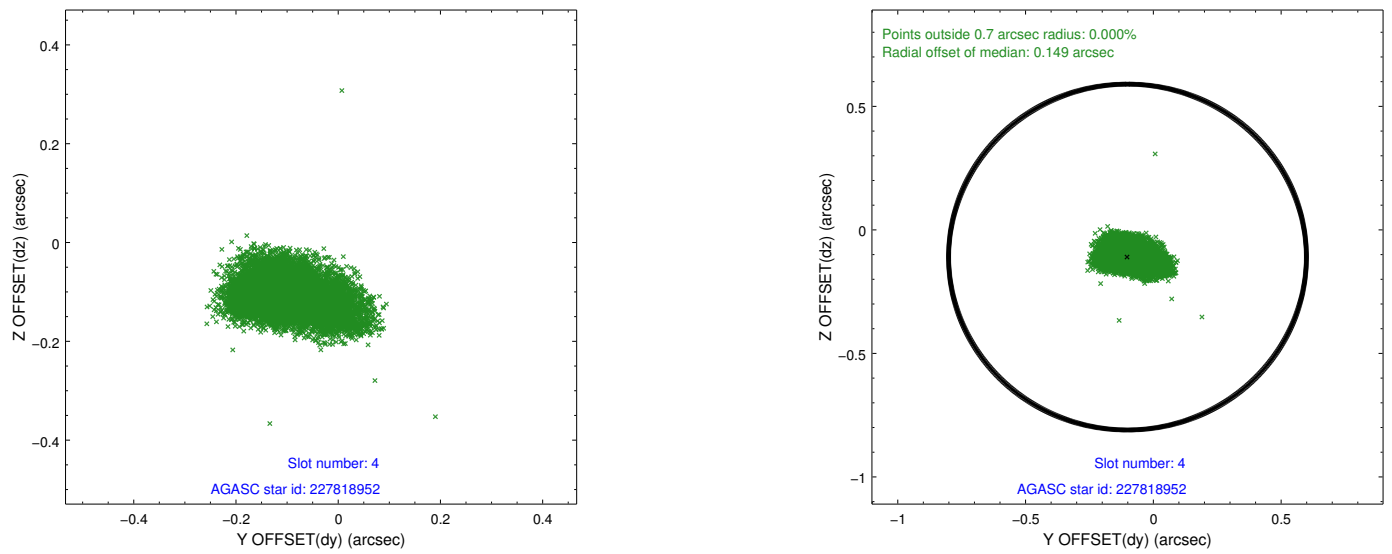
slot	status	id	mag	n_pts	med_dy	med_dz	dr1	dr2	ra	dec	mean_y	mean_z
0	FID	ACIS-S-2	6.92	4925	-0.021	-0.045	0.008	0.013	0.000000	0.000000	-765.83	-1734.61
1	FID	ACIS-S-4	7.00	4925	0.147	0.022	0.007	0.013	0.000000	0.000000	2147.54	173.74
2	FID	ACIS-S-5	7.04	4924	-0.157	0.031	0.008	0.013	0.000000	0.000000	-1818.57	167.65
3	GUIDE	227803192	7.91	9844	-0.024	0.174	0.061	0.101	10.920123	24.890170	1306.67	-1132.38
4	GUIDE	227818952	6.40	9849	-0.101	-0.110	0.073	0.124	10.400187	24.629023	1918.06	710.12
5	GUIDE	227939904	8.04	9845	0.119	0.038	0.070	0.114	11.577166	24.301965	-1709.79	-1046.62
6	GUIDE	227951600	9.15	9837	-0.124	0.083	0.083	0.134	11.186509	24.732287	281.81	-1307.83
7	GUIDE	227806144	10.30	9610	0.126	-0.185	0.168	0.274	10.922653	23.885305	-1158.87	1516.79

2.4 Star Slots

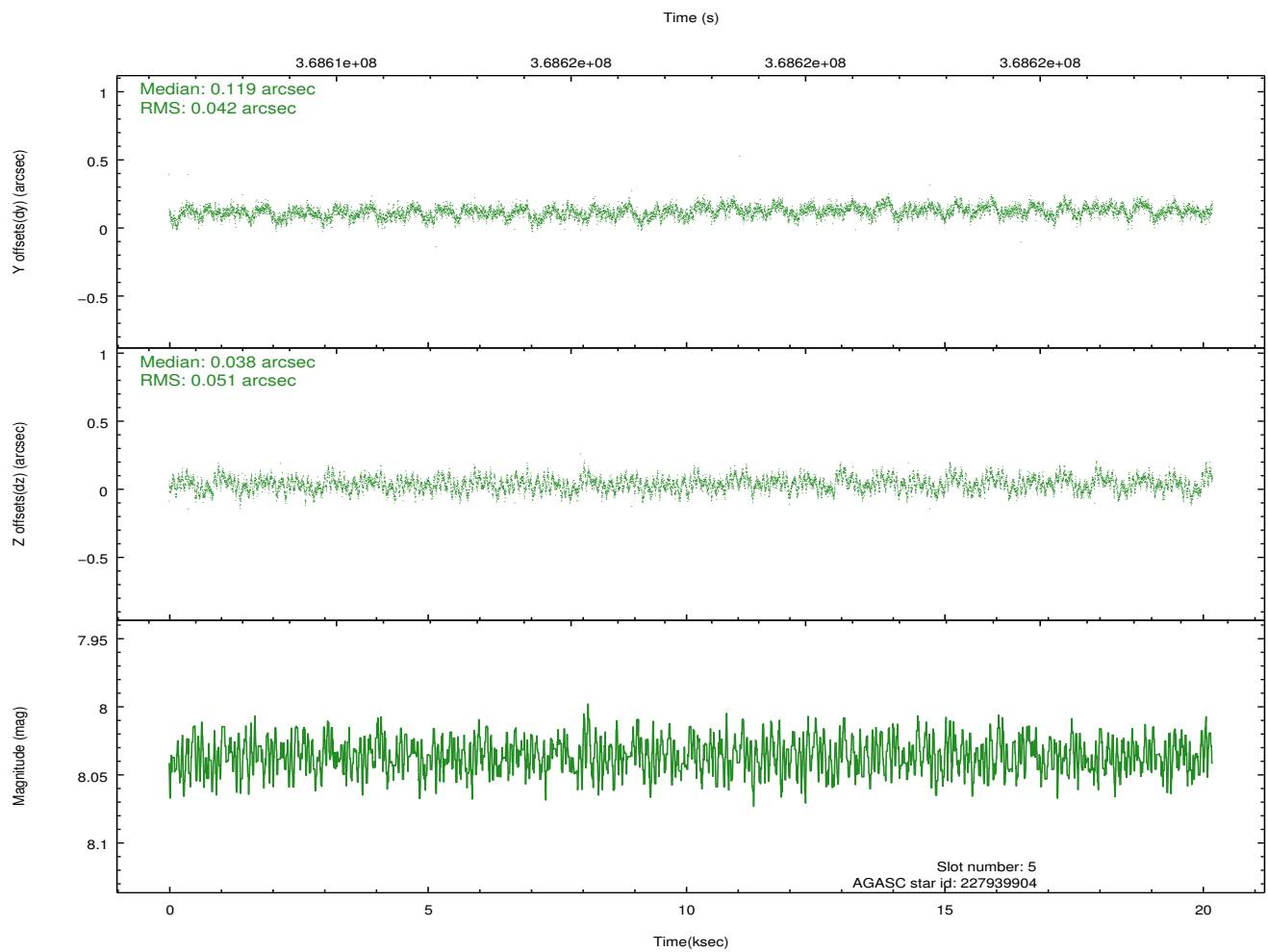
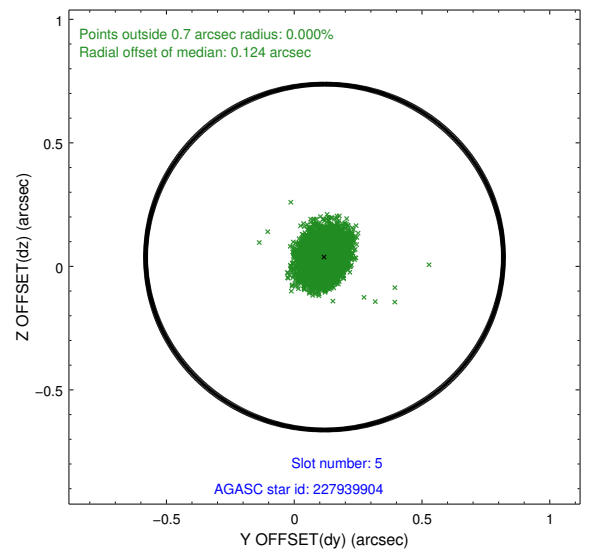
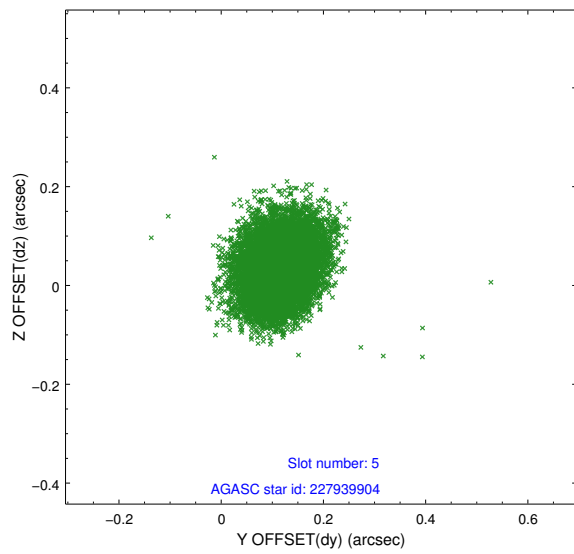
2.4.1 Slot 3



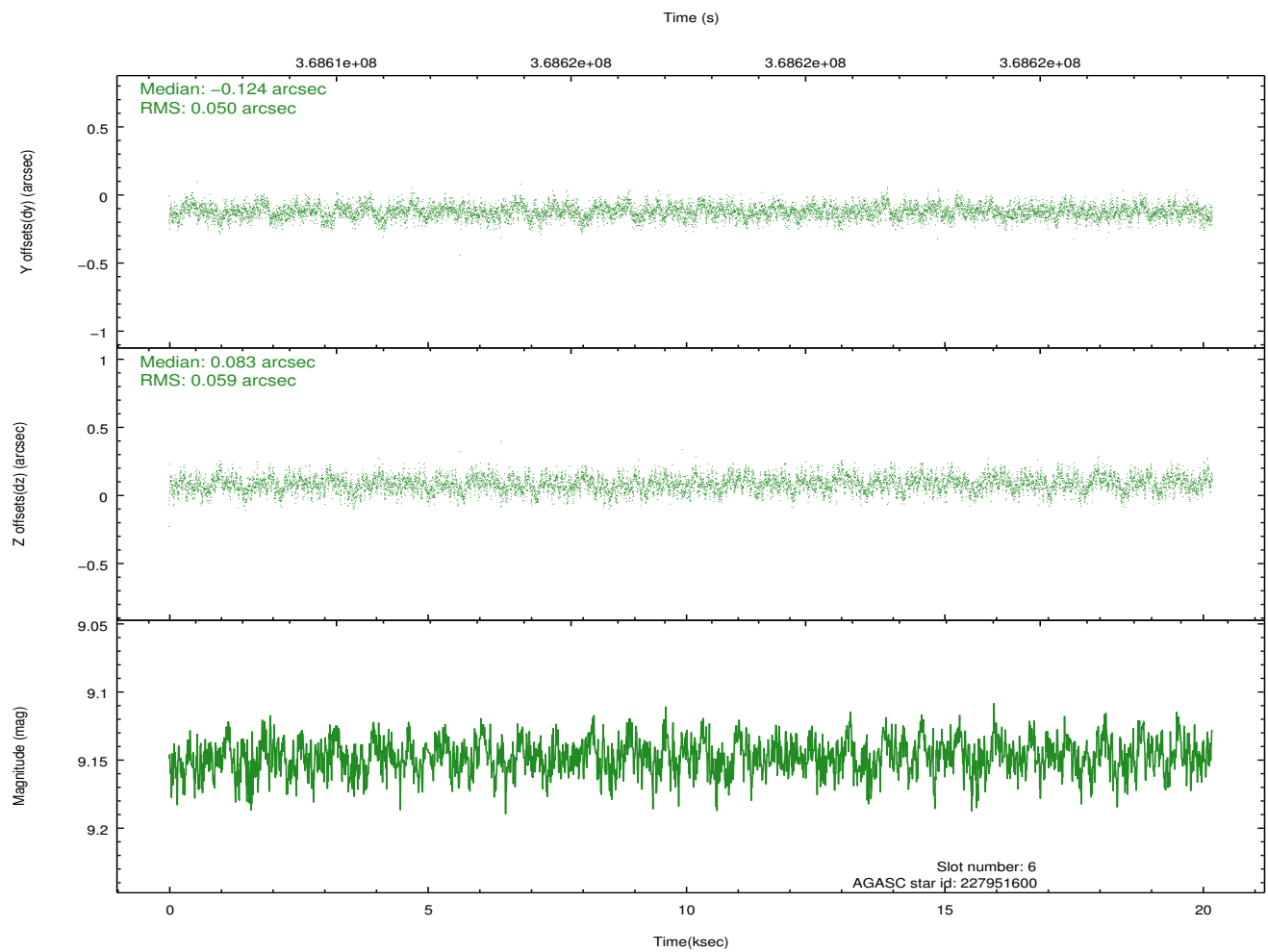
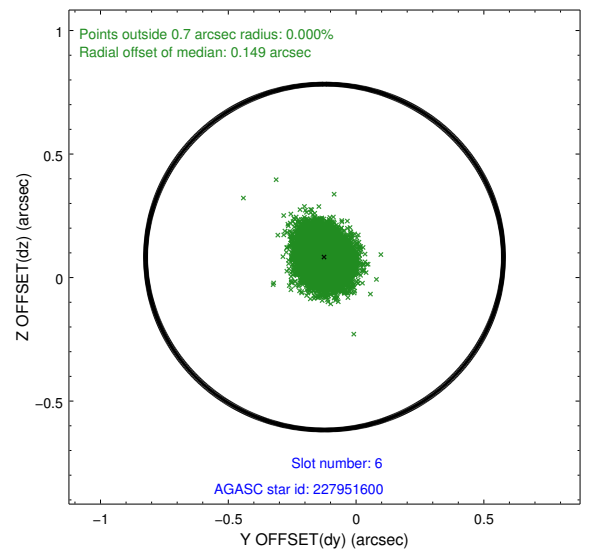
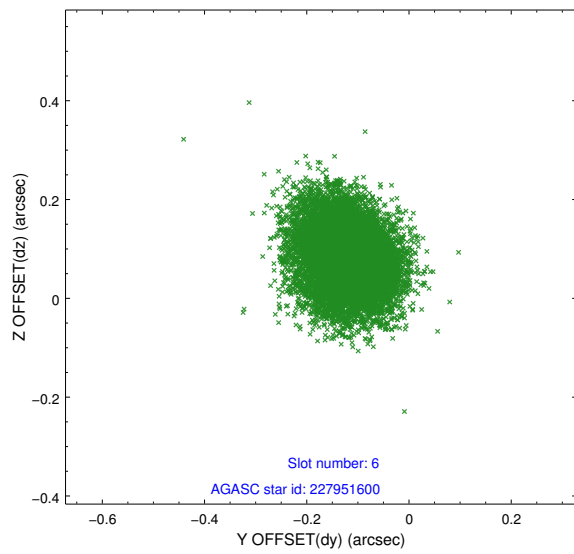
2.4.2 Slot 4



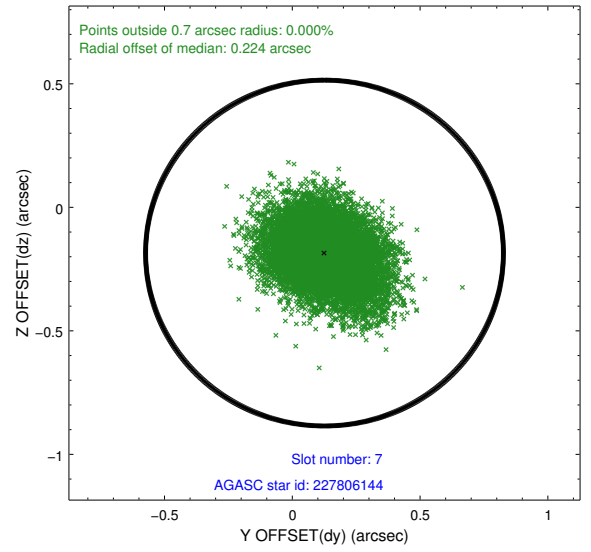
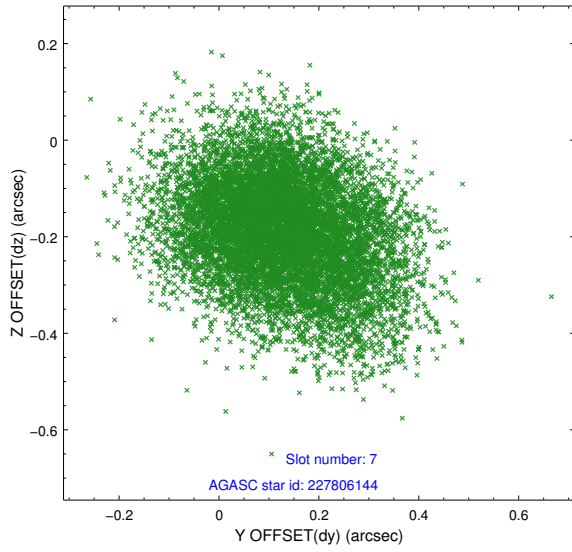
2.4.3 Slot 5



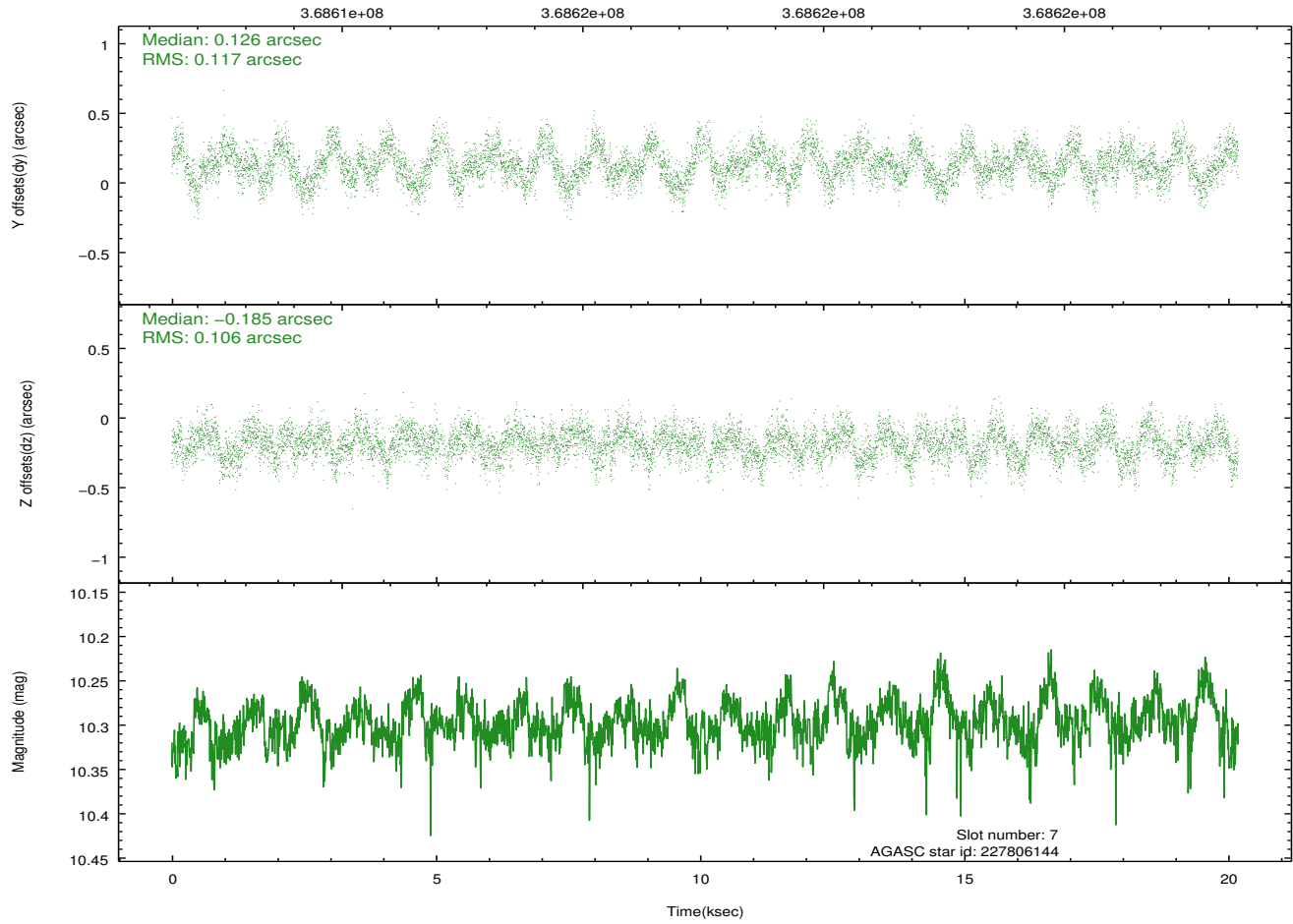
2.4.4 Slot 6



2.4.5 Slot 7

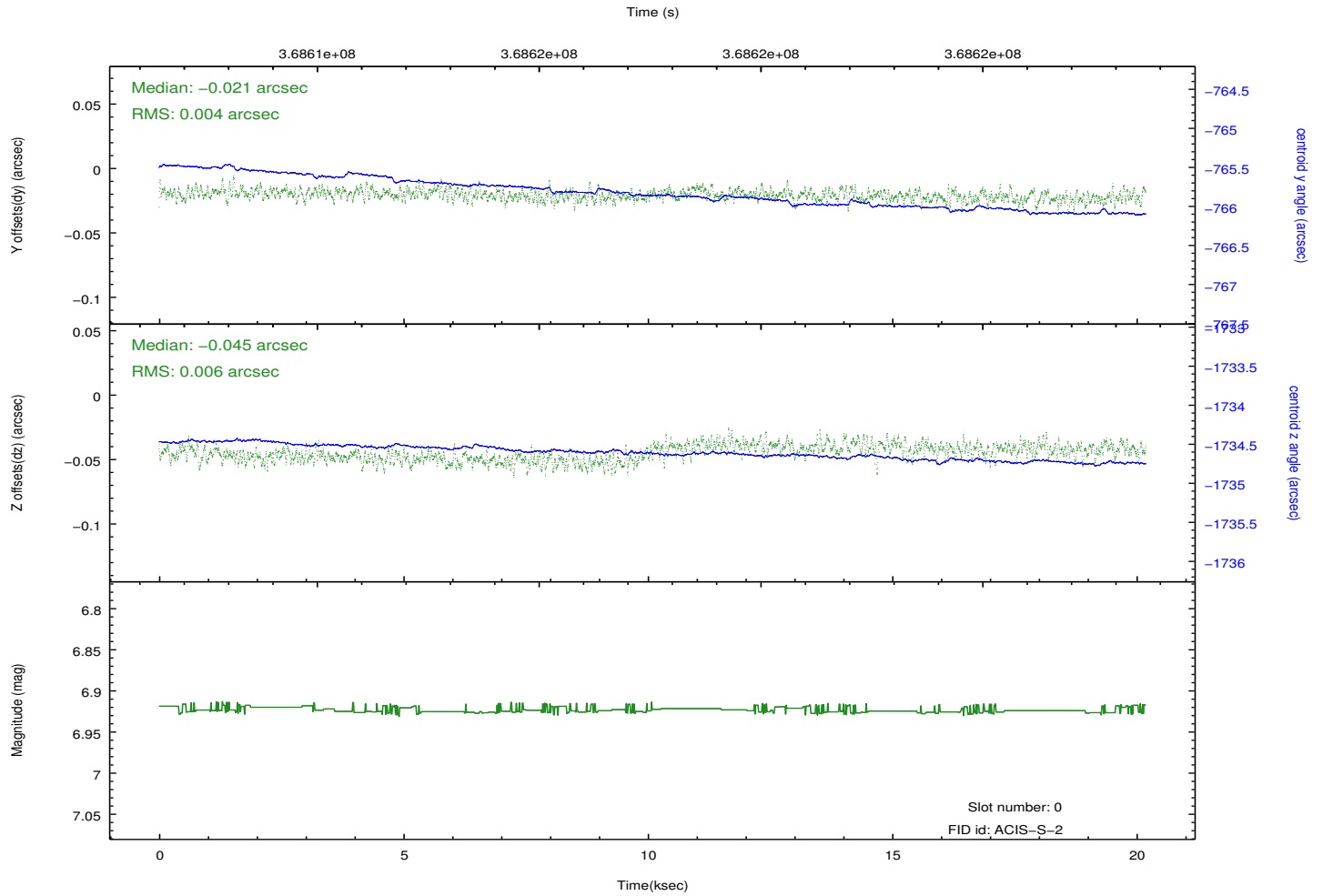
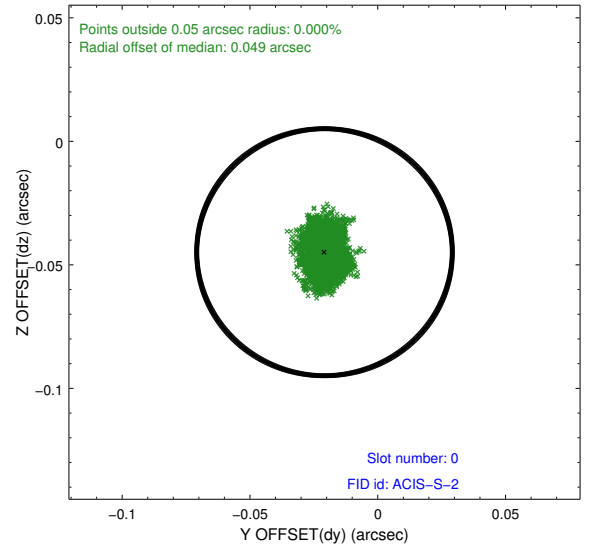
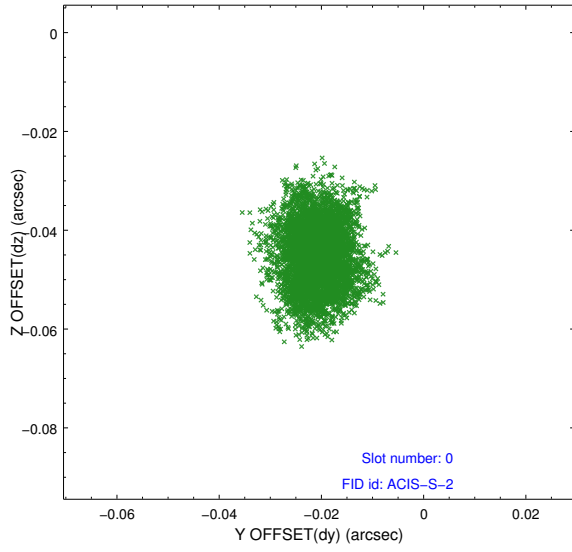


Time (s)

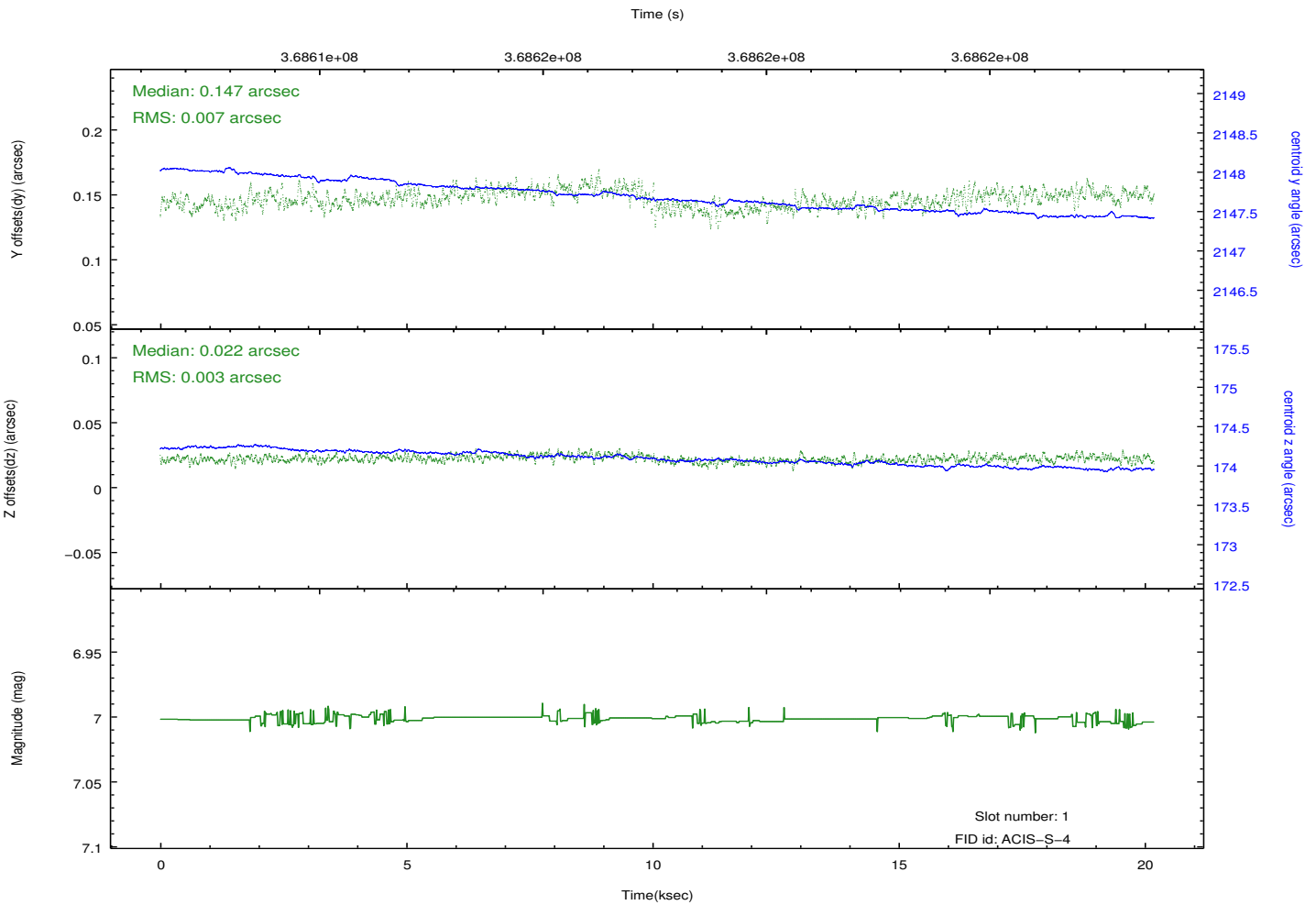
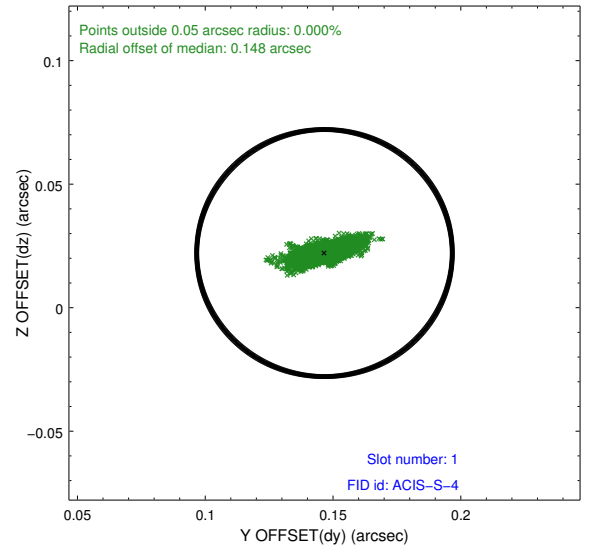
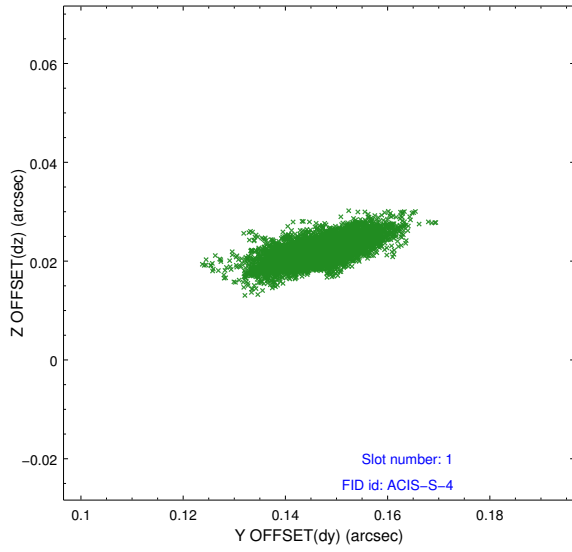


2.5 FID Slots

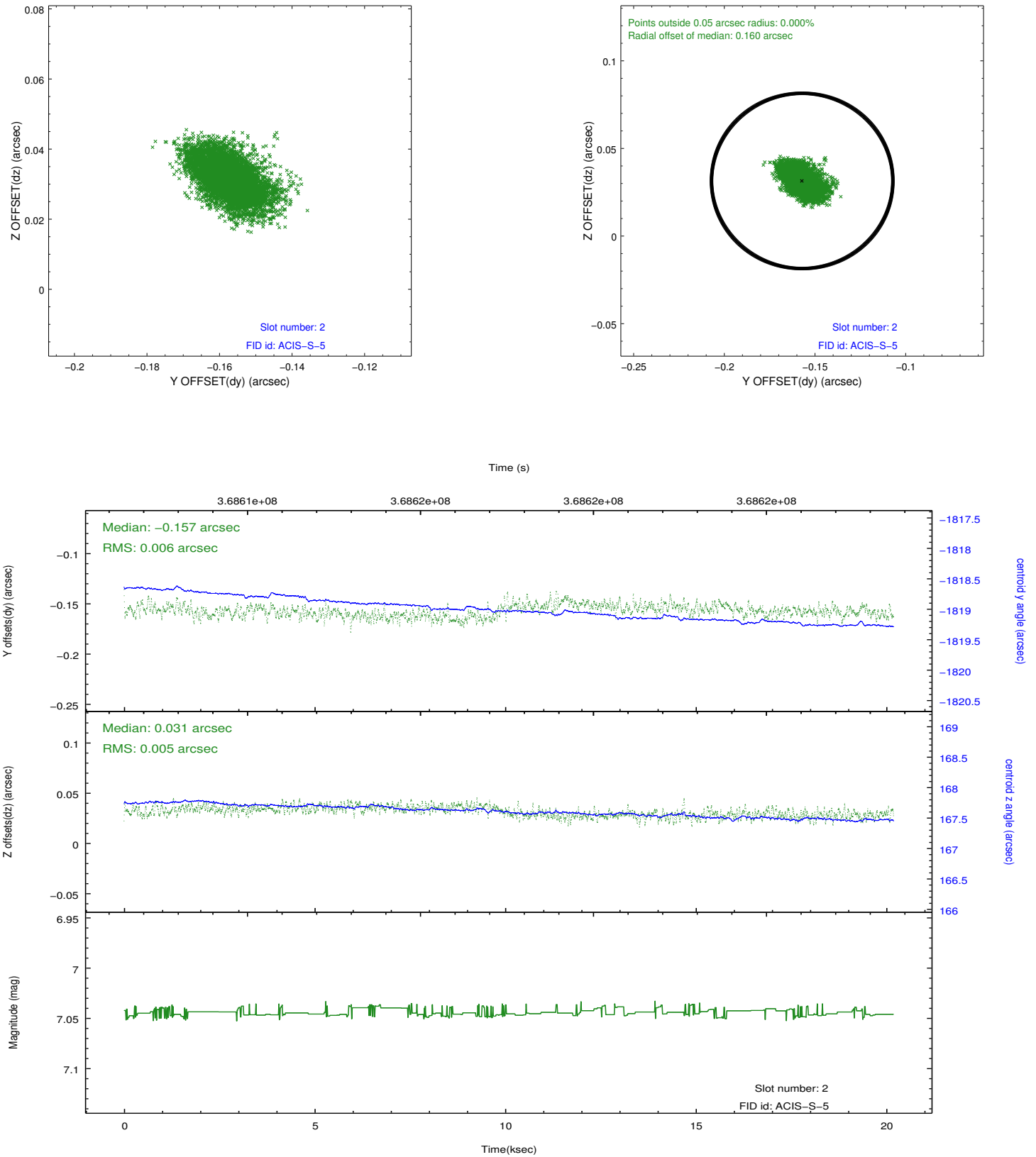
2.5.1 Slot 0



2.5.2 Slot 1



2.5.3 Slot 2



A Summary

A.1 Status

V&V Scientist	Jen Lauer
V&V Date (YYYY-MM-DD)	2012.06.15
V&V Edition	1
V&V Disposition and Status	OK
V&V Charge Time	20.077635340512

A.2 Comments