

V&V Reference Report

L2 ASCDS Version : 8.4.5

Observation 11775 - L2 Version 2
Chandra X-Ray Center

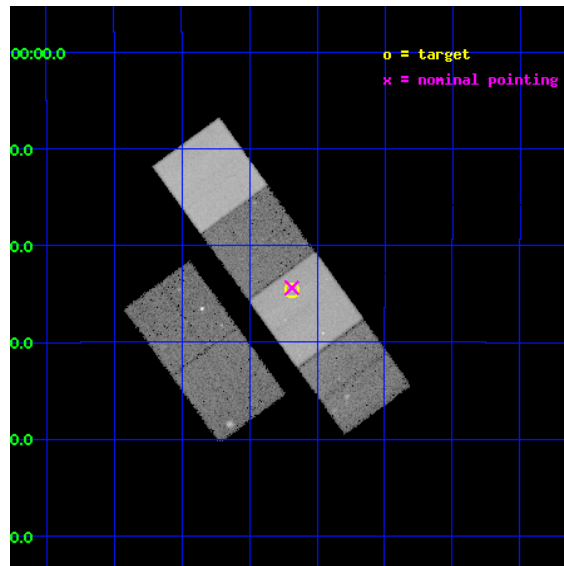
L2 Processing Date : Jun 15 2012

Contents

1	Front	2
2	OBI	3
2.1	OBI	3
2.1.1	Images	3
2.1.2	Bias	3
2.1.3	Parameters	4
2.1.4	Events	4
2.2	Compared Parameters	5
2.3	Aspect	6
2.4	Star Slots	9
2.4.1	Slot 3	9
2.4.2	Slot 4	10
2.4.3	Slot 5	11
2.4.4	Slot 6	12
2.4.5	Slot 7	13
2.5	FID Slots	14
2.5.1	Slot 0	14
2.5.2	Slot 1	15
2.5.3	Slot 2	16
A	Summary	17
A.1	Status	17
A.2	Comments	17

1 Front

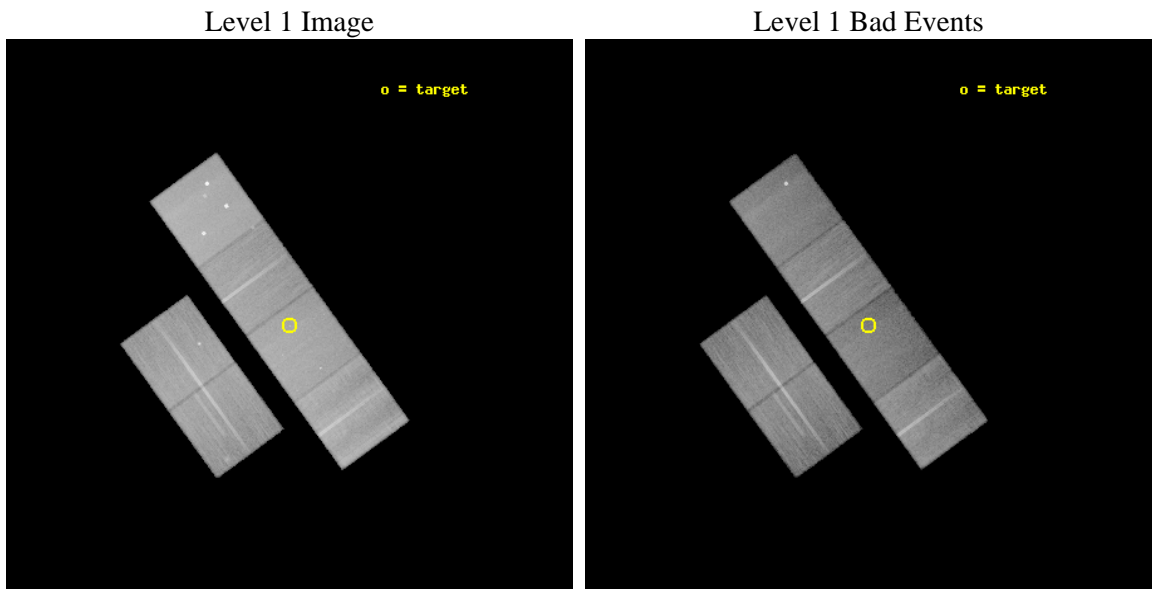
seq_num	900910	Sequence number
obs_id	11775	Observation id
title	COMBH: Chandra Observations of M-sigma Black Holes	Proposal title
observer	Dr. Kayhan Gultekin	Principal investigator
object	NGC1300	Source name
dtycycle	0	
cycle	P	events from which exps? Prim/Second/Both
ra_targ	49.92125	Observer's specified target RA [deg]
dec_targ	-19.411361	Observer's specified target Dec [deg]
ra_nom	49.921653608738	Nominal RA [deg]
dec_nom	-19.406505687888	Nominal Dec [deg]
roll_nom	53.965621173973	Nominal Roll [deg]
revision	2	Processing version of data
ontime	30043.977406263	Sum of GTIs [s]
livetime	29663.542474034	Livetime [s]
ontime2	30044.018446267	Sum of GTIs [s]
ontime3	30043.854286253	Sum of GTIs [s]
ontime5	30043.93636626	Sum of GTIs [s]
ontime6	30040.654306054	Sum of GTIs [s]
ontime7	30043.977406263	Sum of GTIs [s]
ontime8	30043.81324625	Sum of GTIs [s]
l2events	403276	Number of level 2 events



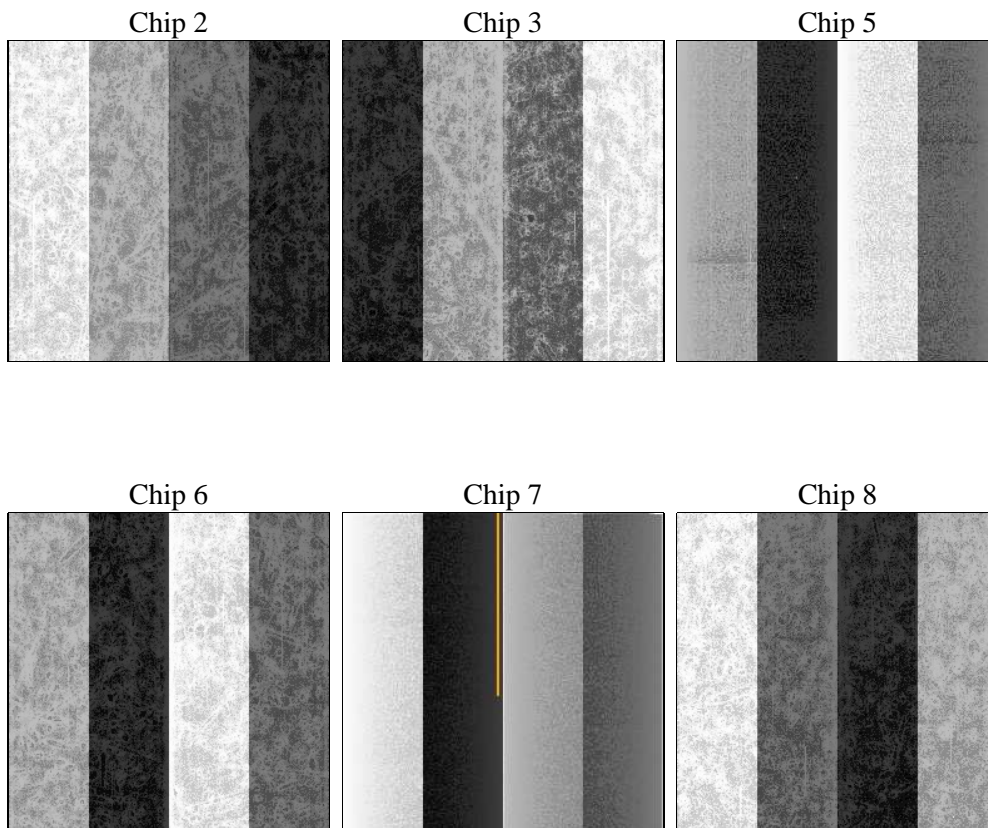
2 OBI

2.1 OBI

2.1.1 Images



2.1.2 Bias



2.1.3 Parameters

obi_num	0	Obi number	sched_exp_time	30000.000000	[s] Scheduled observation exposure time
ascdsver	8.4.5	Processing system revision	ontime	30043.977406263	Sum of GTIs [s]
caldbver	4.4.10	 	ontime2	30044.018446267	Sum of GTIs [s]
date	2012-06-15T14:10:17	Date and time of file creation	ontime3	30043.854286253	Sum of GTIs [s]
revision	2	Processing version of data	ontime5	30043.93636626	Sum of GTIs [s]
			ontime6	30040.654306054	Sum of GTIs [s]
			ontime7	30043.977406263	Sum of GTIs [s]
			ontime8	30043.81324625	Sum of GTIs [s]
			l1events	1802007	Number of level 1 events

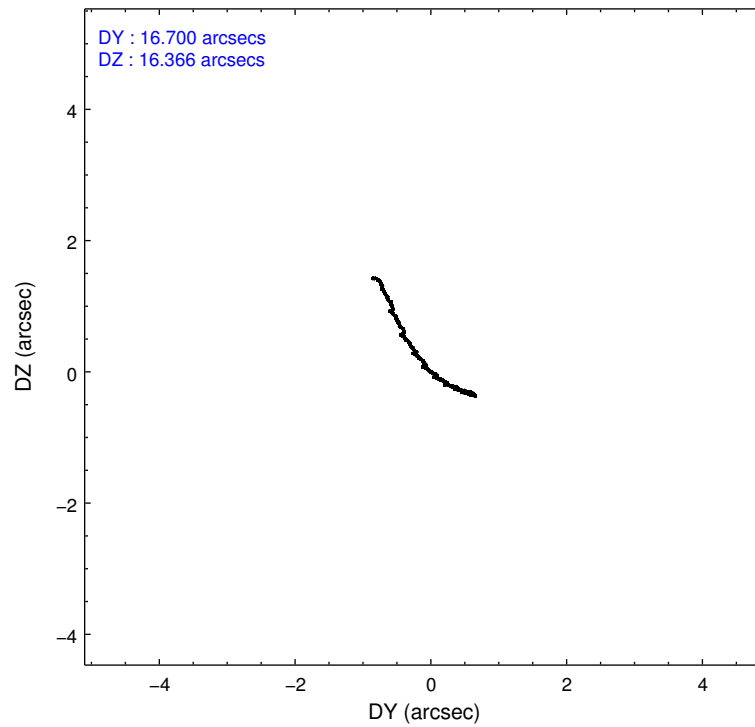
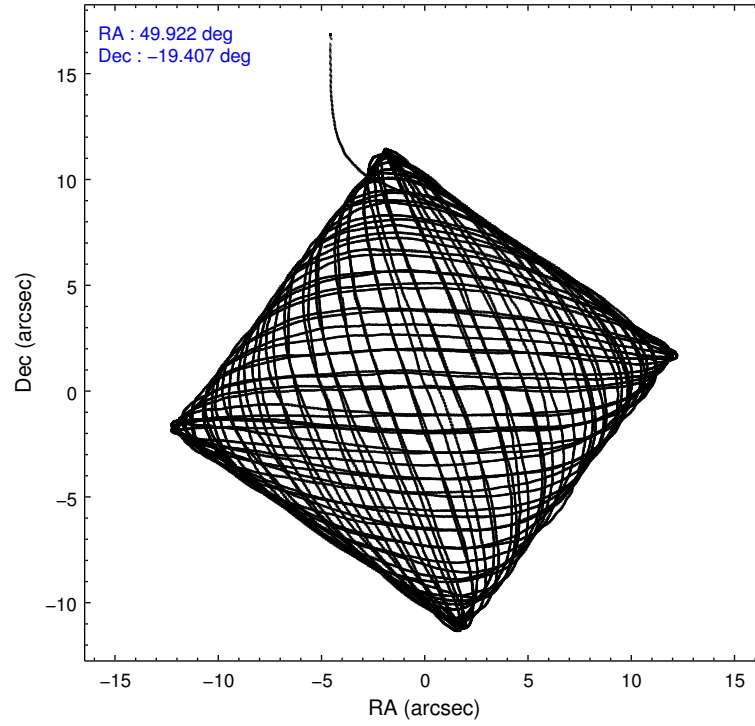
2.1.4 Events

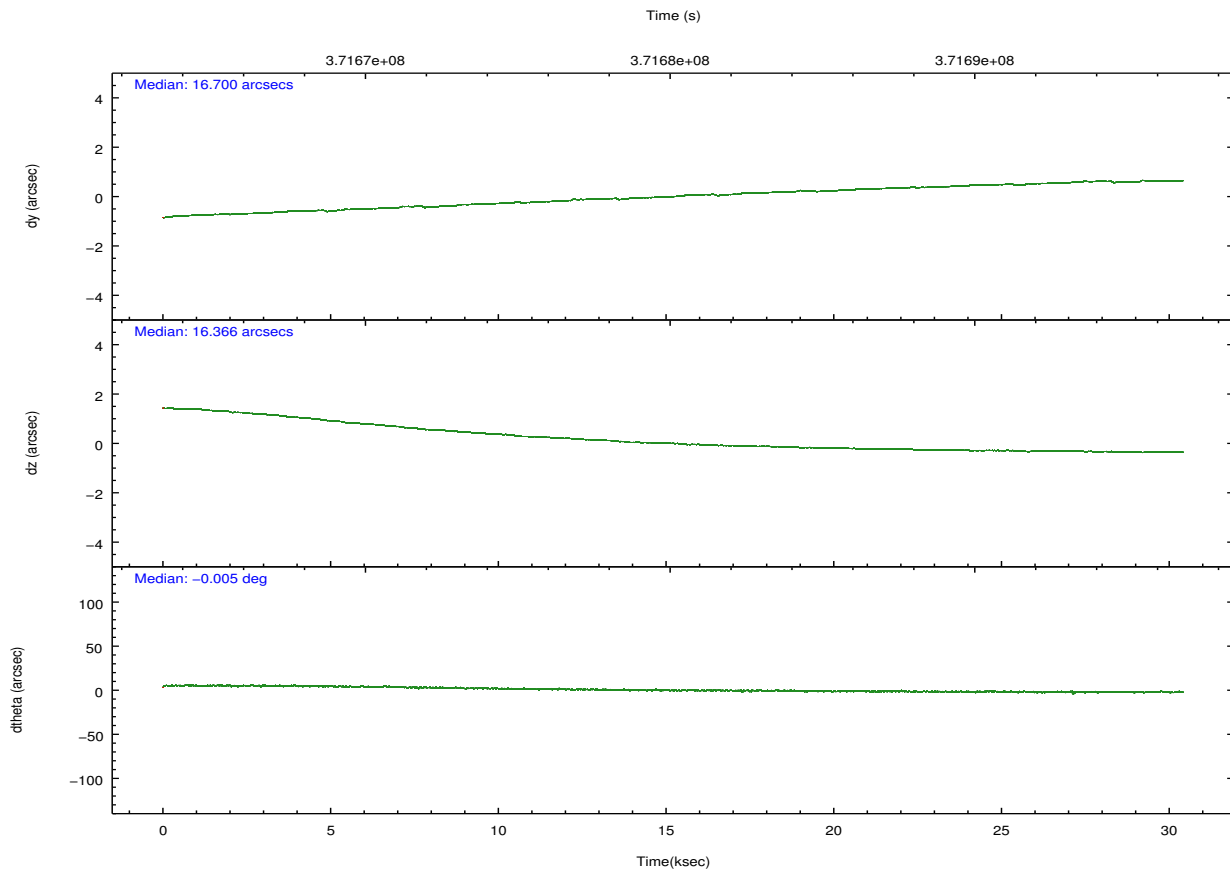
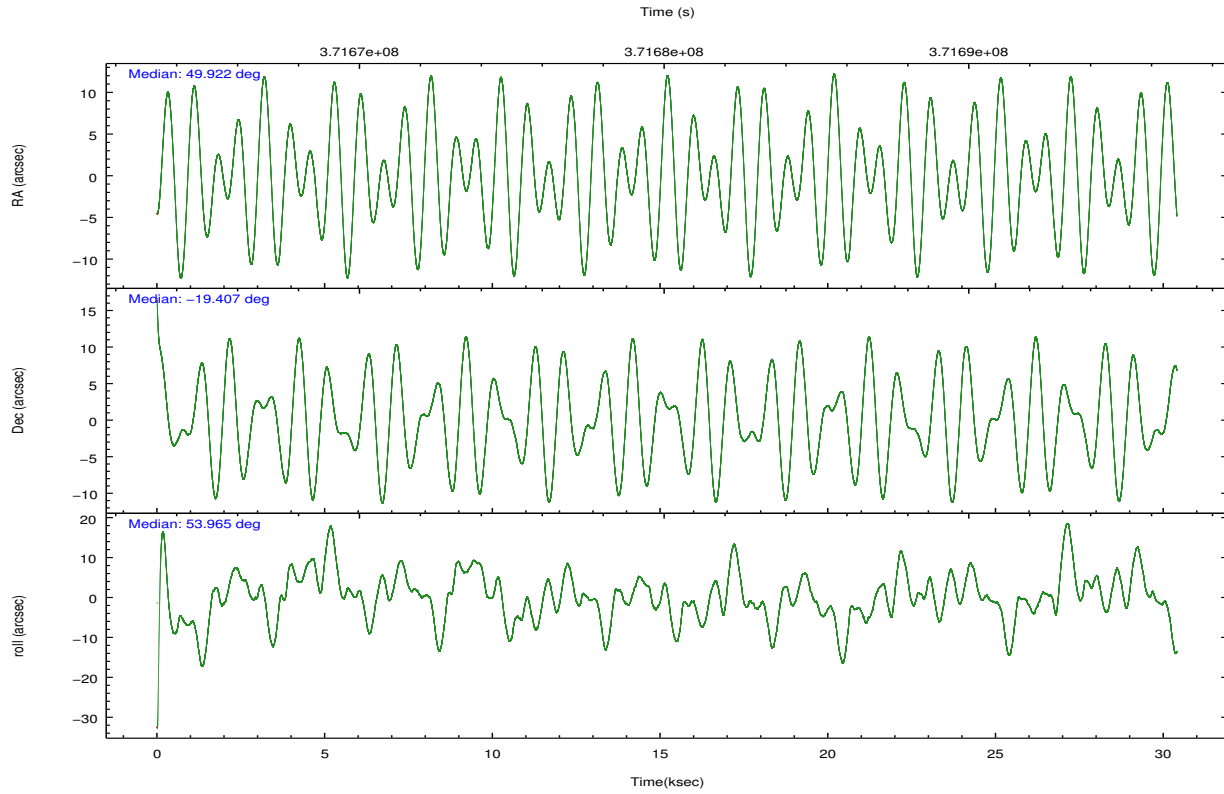
	ccd 2	ccd 3	ccd 5	ccd 6	ccd 7	ccd 8		ccd 2	ccd 3	ccd 5	ccd 6	ccd 7	ccd 8
level 1 events	274545	246966	386267	261150	301130	331949	grade 0 events	10592	8881	26905	9560	13254	25049
rejected events	246795	222360	189269	233441	163597	247024		3%	3%	6%	3%	4%	7%
rejected %	89%	90%	48%	89%	54%	74%	grade 1 events	166	141	765	133	414	286
								0%	0%	0%	0%	0%	0%
							grade 2 events	6579	5309	58876	6364	28294	19961
								2%	2%	15%	2%	9%	6%
							grade 3 events	2769	2785	7532	2937	12432	8933
								1%	1%	1%	1%	4%	2%
							grade 4 events	2852	2720	7115	2903	12439	8385
								1%	1%	1%	1%	4%	2%
							grade 5 events	9114	10745	28609	10763	31643	15819
								3%	4%	7%	4%	10%	4%
							grade 6 events	4963	4911	96587	5949	71129	22600
								1%	1%	25%	2%	23%	6%
							grade 7 events	237510	211474	159878	222541	131525	230916
								86%	85%	41%	85%	43%	69%

2.2 Compared Parameters

Parameter	Planned	Actual	Parameter	Planned	Actual
Instrument	ACIS	ACIS	Obspar format version number	7	7
Detector	ACIS-235678	ACIS-235678	Obspar file type	PREDICTED	ACTUAL
Grating	NONE	NONE	Obspar update status	NONE	UPDATED
Data mode	FAINT	FAINT	CCD I0 on	N	N
Observation mode	POINTING	POINTING	CCD I1 on	N	N
[deg] Pointing RA	49.918984	49.92165360873791	CCD I2 on	O1	Y
[deg] Pointing Dec	-19.433750	-19.40650568788808	CCD I3 on	O2	Y
[deg] Pointing Roll	53.808117	53.96562117397316	CCD S0 on	N	N
[mm] SIM focus pos	-0.684267	-0.6828225247311905	CCD S1 on	Y	Y
[mm] SIM defocus	0	0.001444936568705701	CCD S2 on	Y	Y
[mm] SIM translation stage pos	-190.132523	-190.1400660498719	CCD S3 on	Y	Y
[mm] SIM translation stage offset	0	0.00754346686406393	CCD S4 on	Y	Y
[s] Observation start time (MET)	371665305.184000	371664023.83231	CCD S5 on	N	N
Observation start date	2009-10-11T16:20:39	2009-10-11T16:00:23	Number of optional ACIS chips dropped	0	0
[s] Observation end time (MET)	371695305.184000	371696322.60893	On-chip summing requested	N	N
Observation end date	2009-10-12T00:40:39	2009-10-12T00:58:42	Subarray requested	NONE	NONE
Read mode	TIMED	TIMED	Alternating exposures requested	N	N
			[s] Primary exposure time	0.000000	3.2

2.3 Aspect



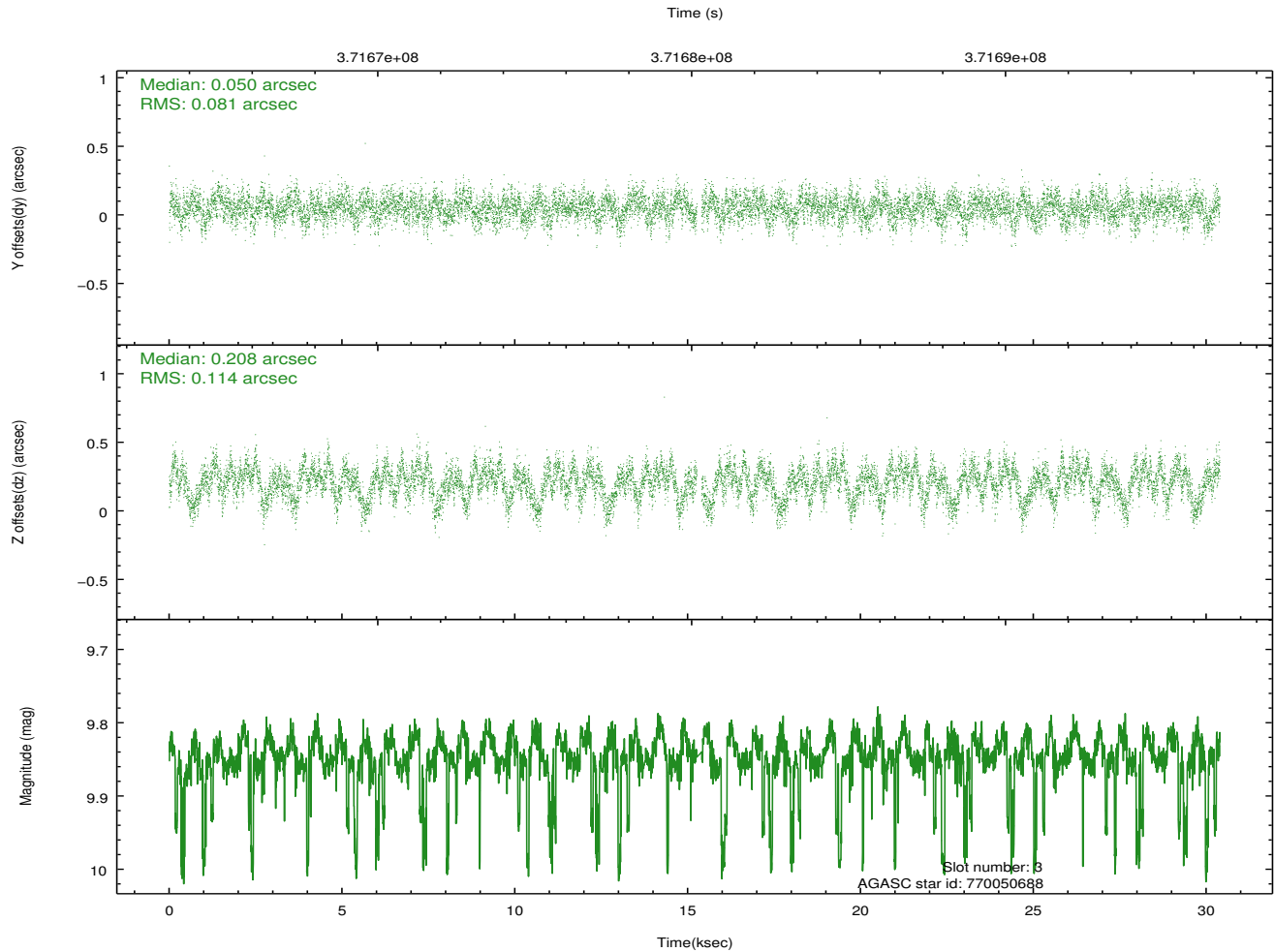
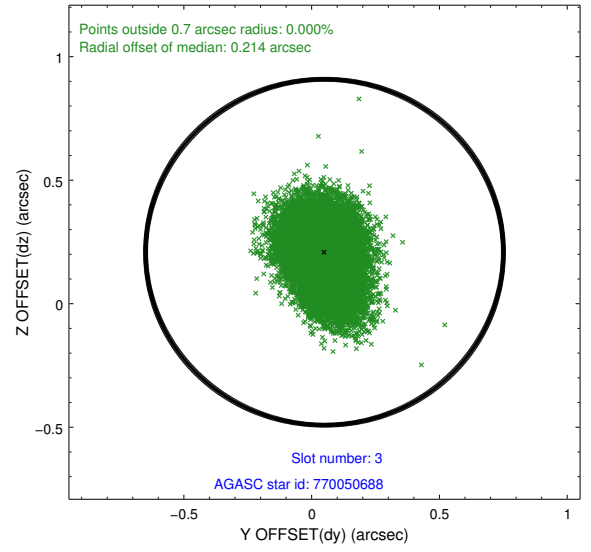
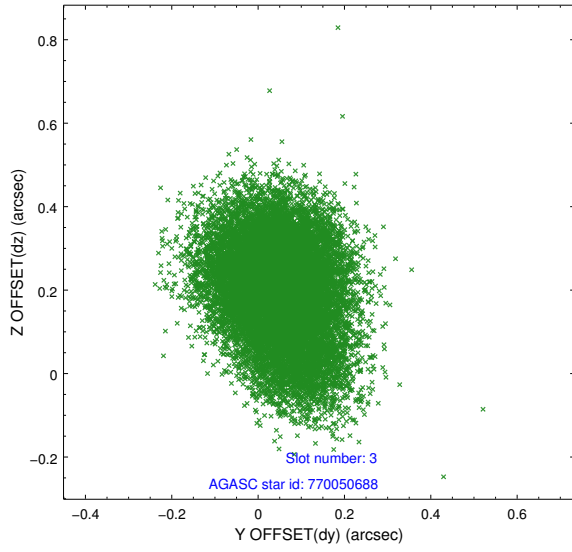


Slot Statistics

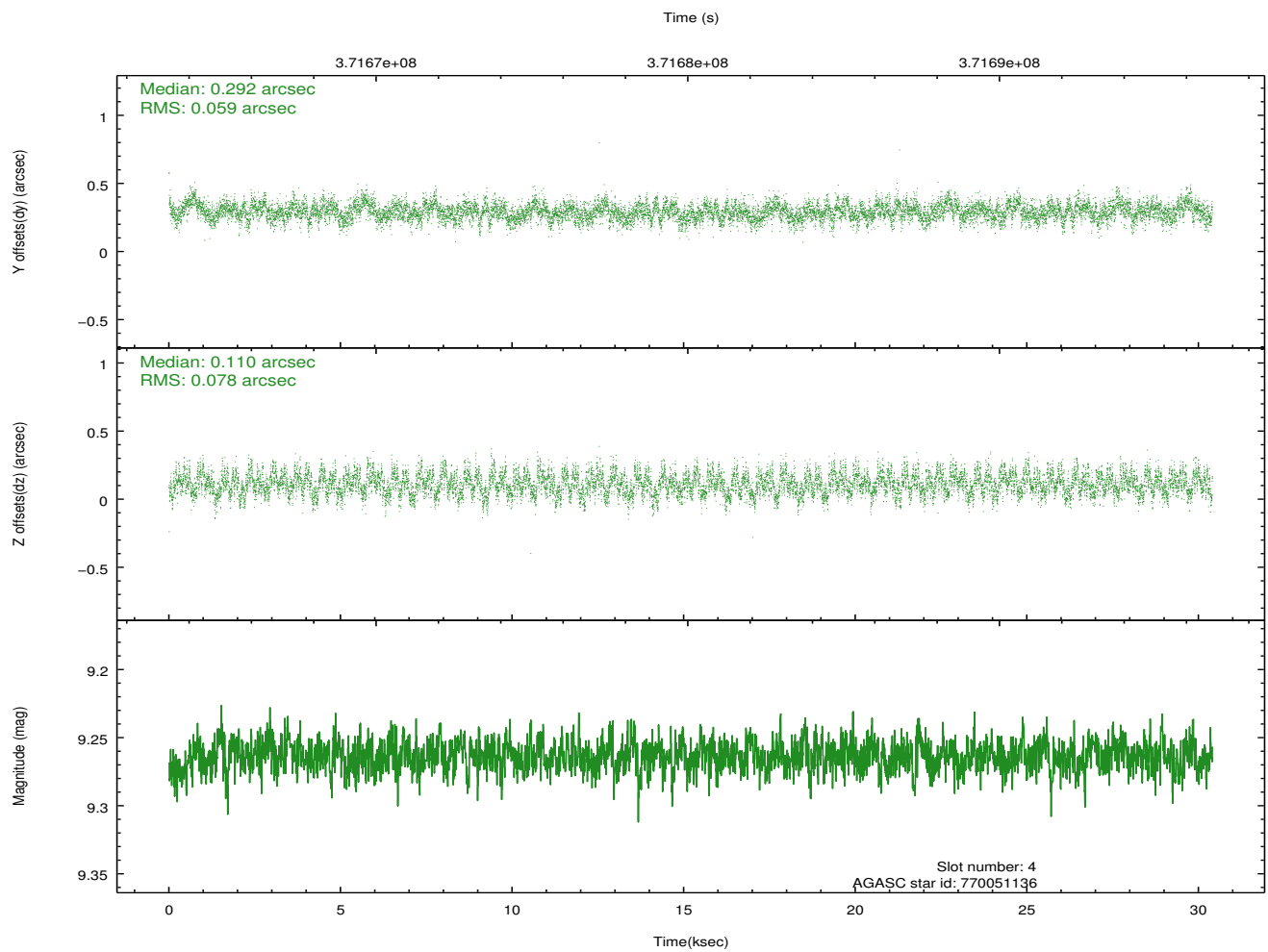
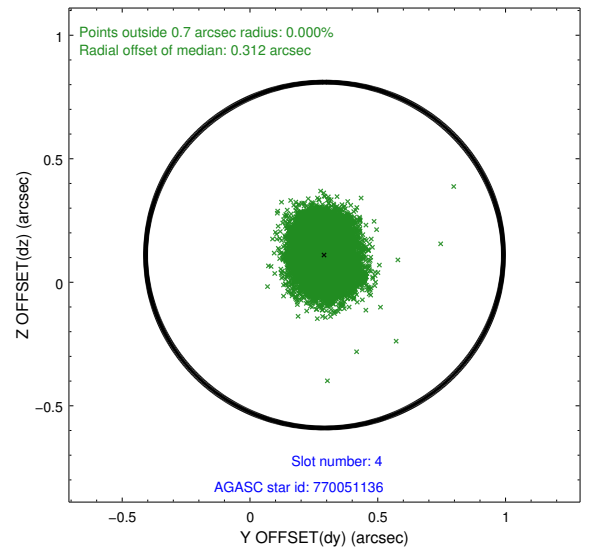
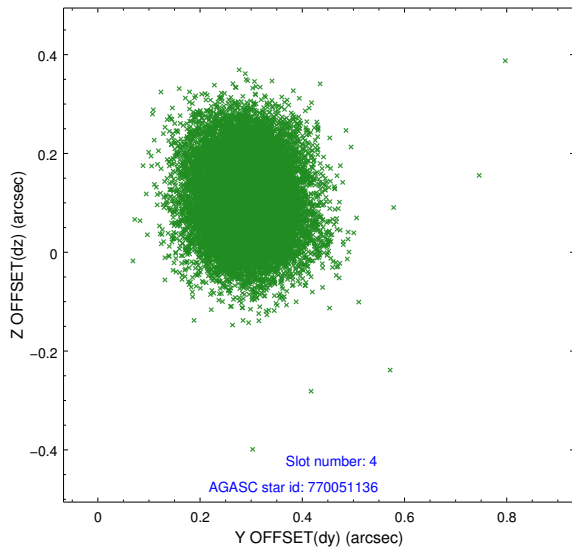
slot	status	id	mag	n_pts	med_dy	med_dz	dr1	dr2	ra	dec	mean_y	mean_z
0	FID	ACIS-S-1	6.97	7415	0.056	-0.069	0.014	0.029	0.000000	0.000000	926.38	-1733.71
1	FID	ACIS-S-4	6.97	7414	0.107	0.026	0.014	0.028	0.000000	0.000000	2143.88	170.47
2	FID	ACIS-S-5	7.01	7416	-0.189	0.056	0.009	0.015	0.000000	0.000000	-1822.64	164.19
3	GUIDE	770050688	9.85	14636	0.050	0.208	0.148	0.245	50.469988	-19.395280	1215.35	-1430.00
4	GUIDE	770051136	9.26	14814	0.292	0.110	0.104	0.167	50.113347	-19.717484	-435.24	-1135.12
5	GUIDE	770055256	9.55	14730	0.041	-0.140	0.146	0.229	49.303658	-19.207345	-580.35	2167.31
6	GUIDE	770181256	9.93	14805	-0.261	-0.116	0.226	0.347	50.701887	-19.319485	1897.83	-1906.98
7	GUIDE	770050184	9.97	14687	-0.130	-0.048	0.187	0.294	49.921041	-18.618977	2371.80	1726.44

2.4 Star Slots

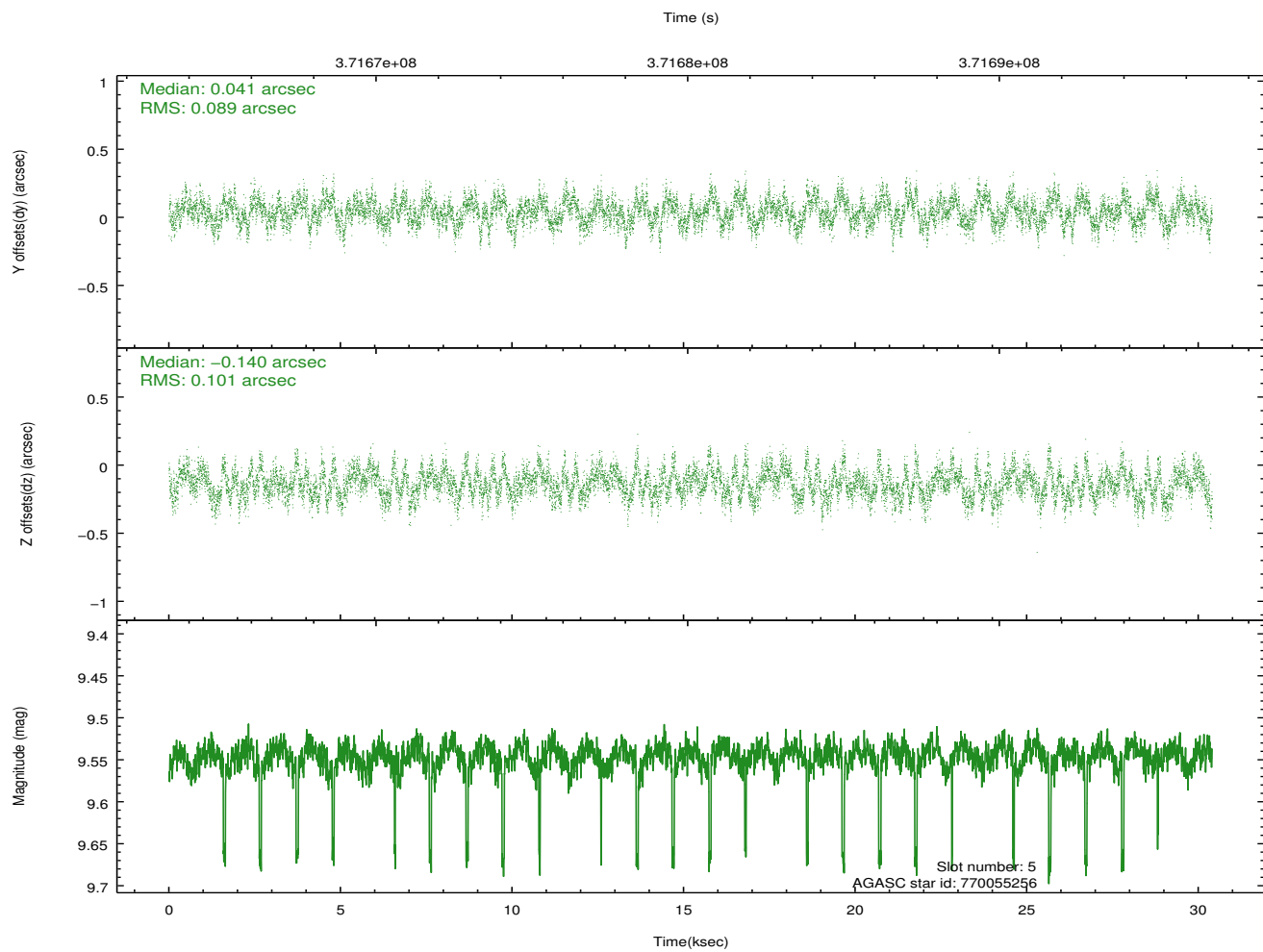
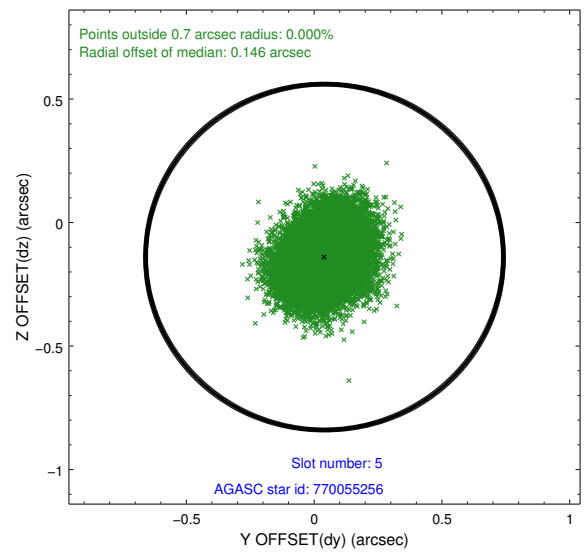
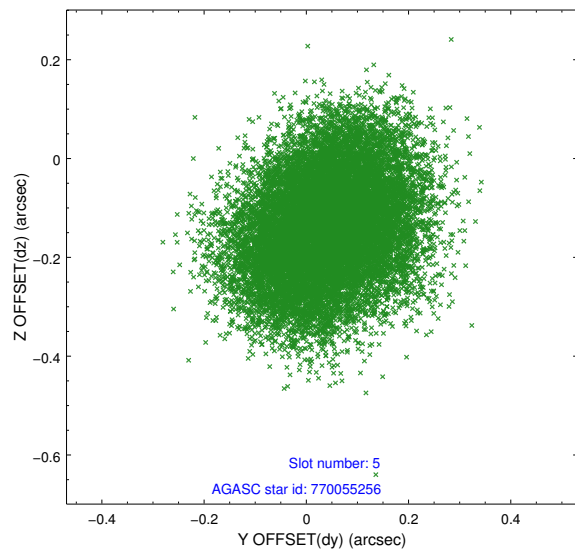
2.4.1 Slot 3



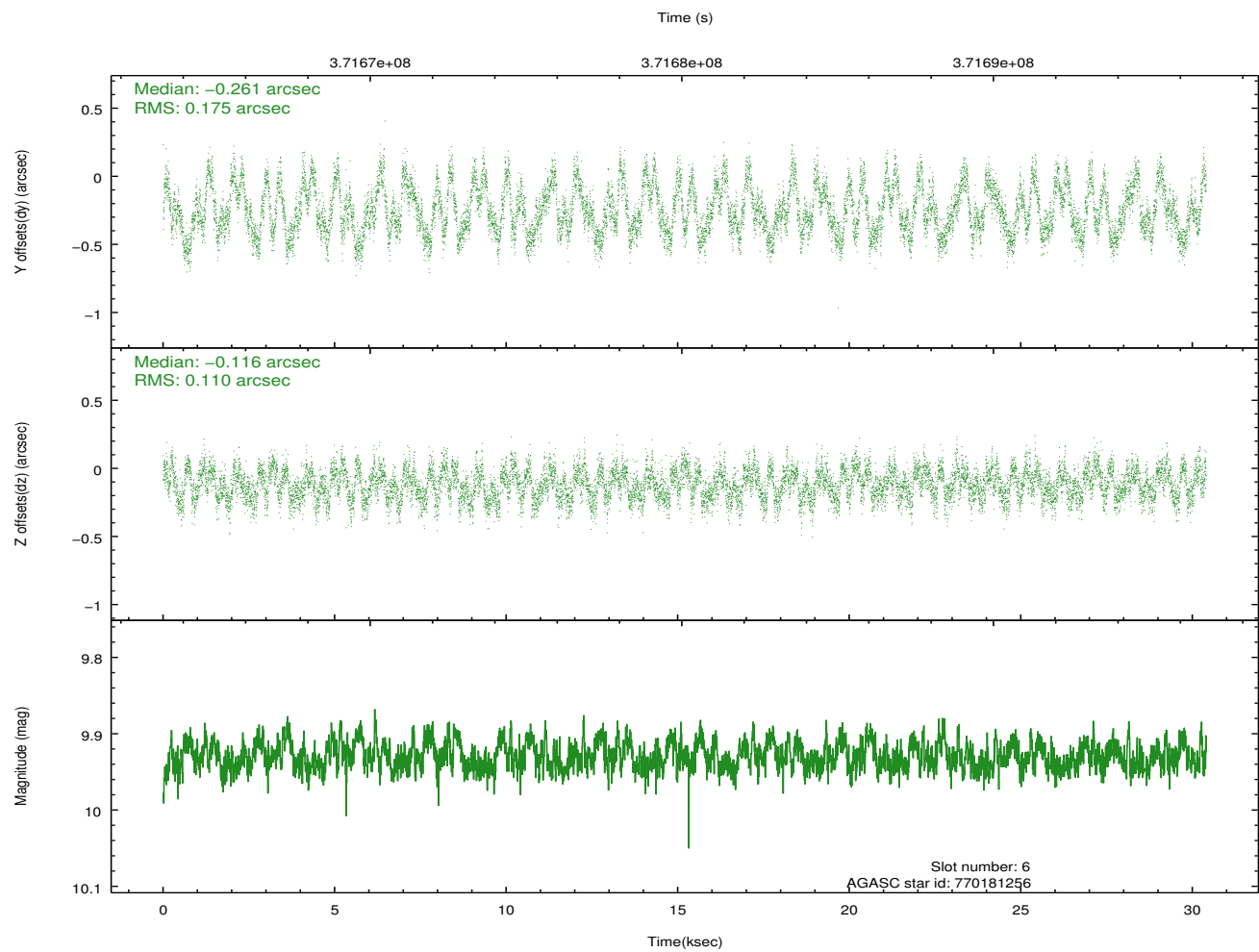
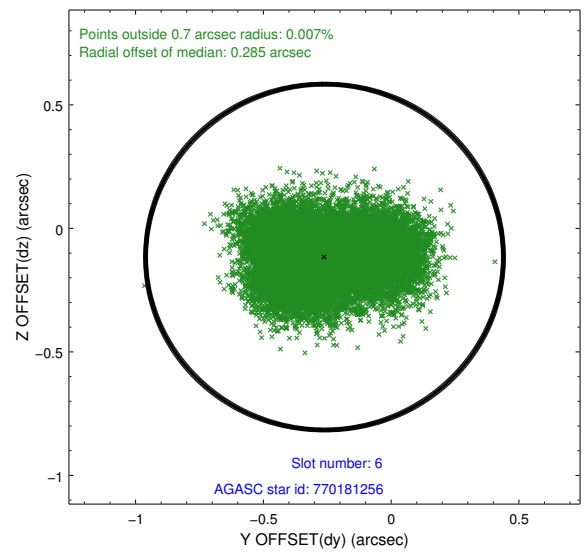
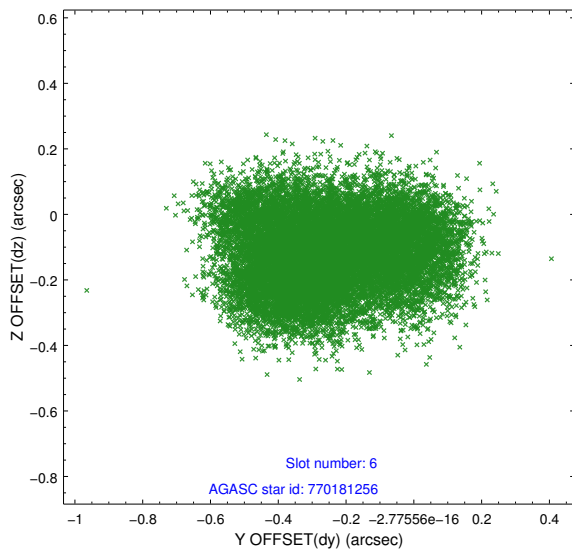
2.4.2 Slot 4



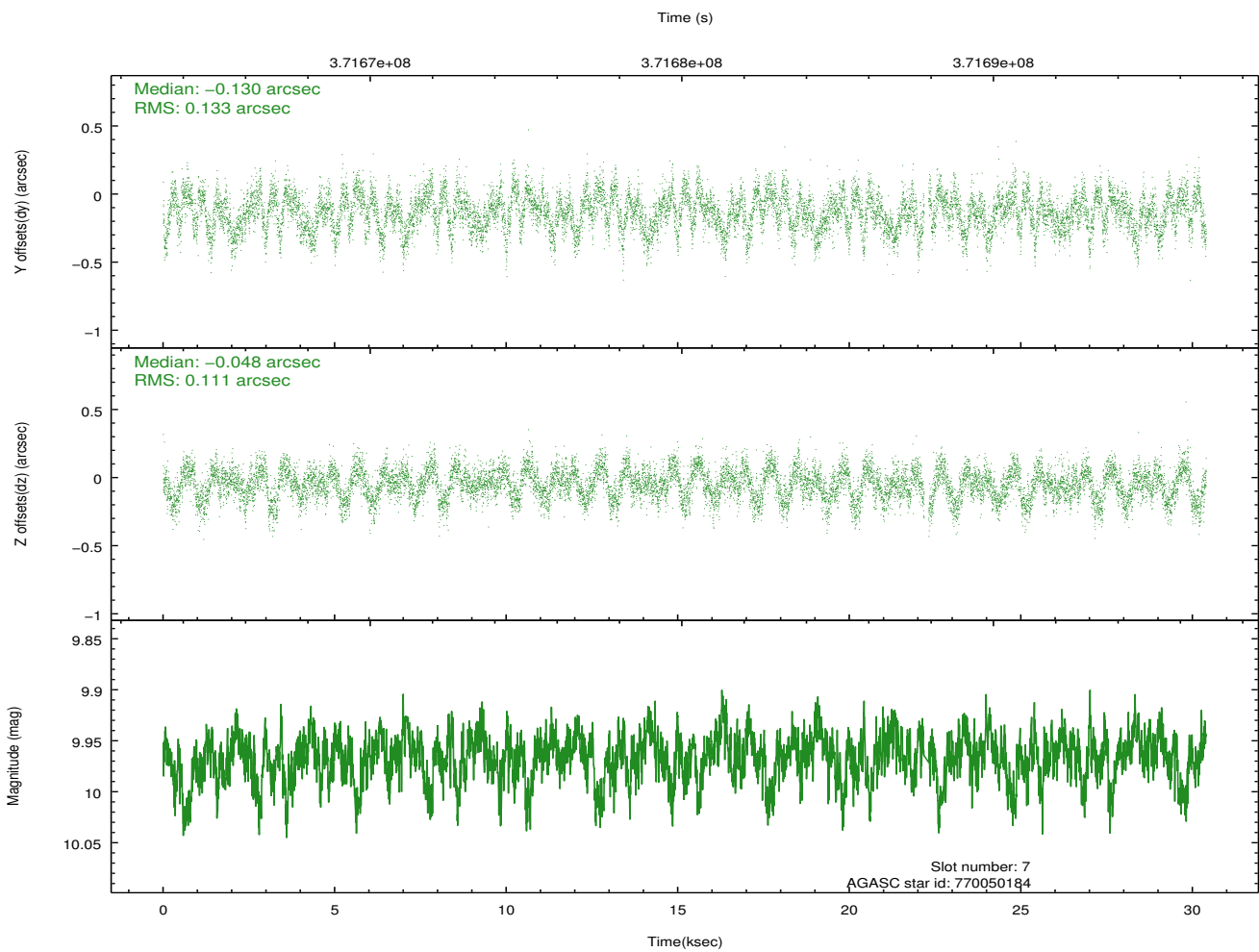
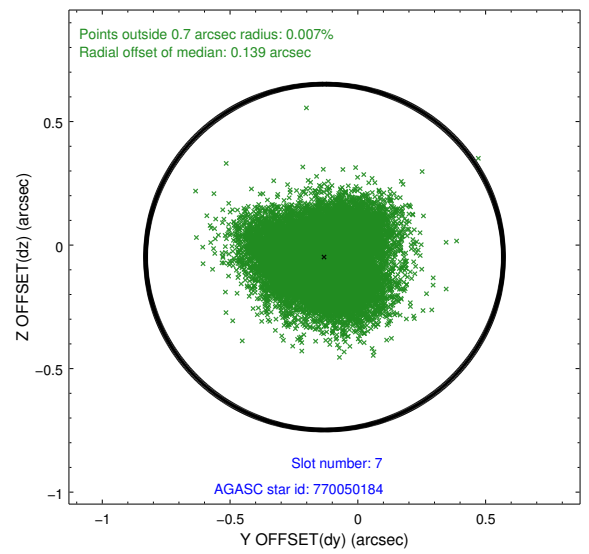
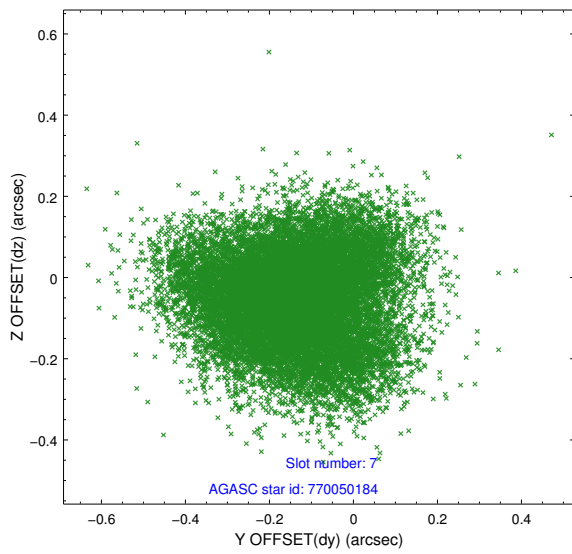
2.4.3 Slot 5



2.4.4 Slot 6

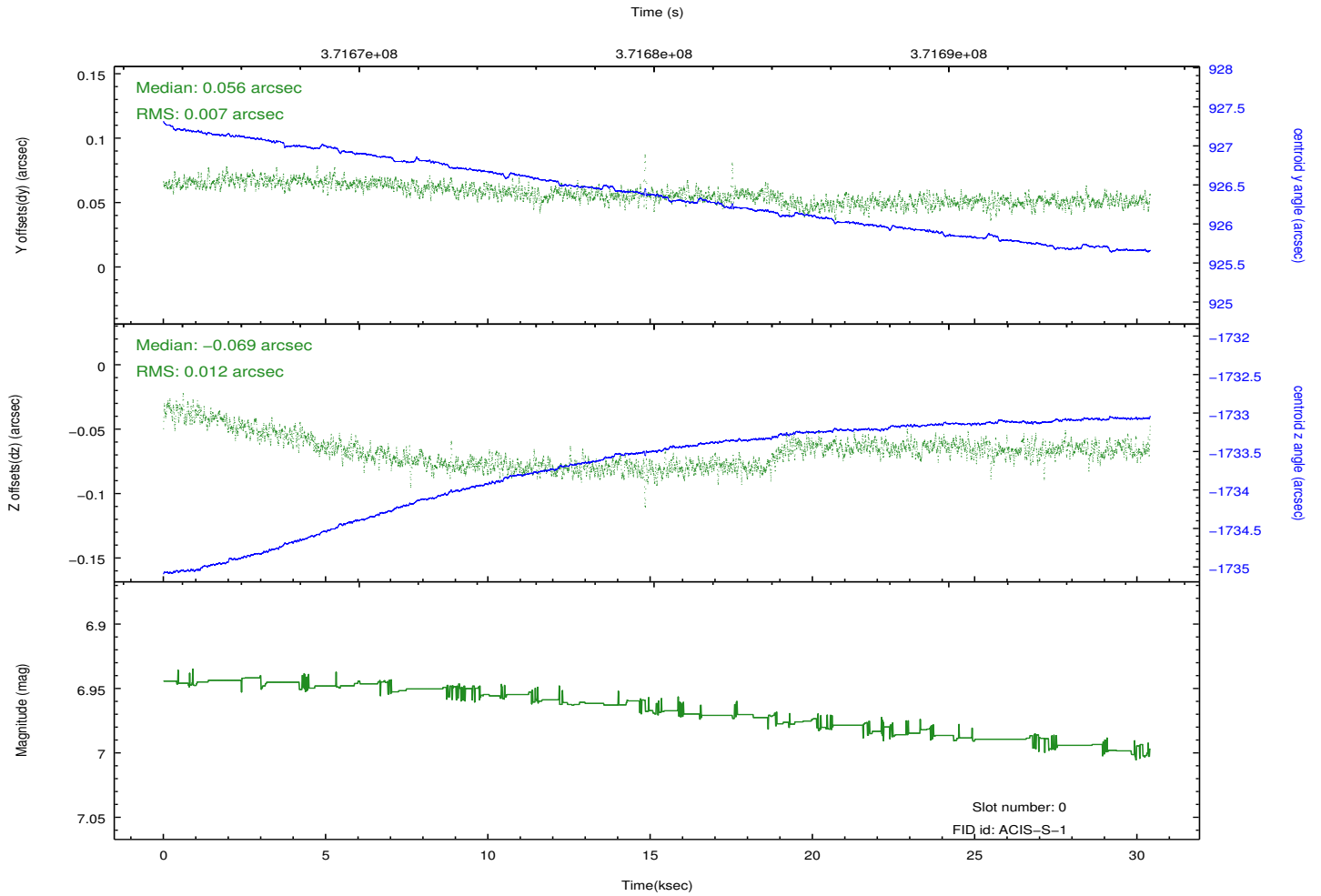
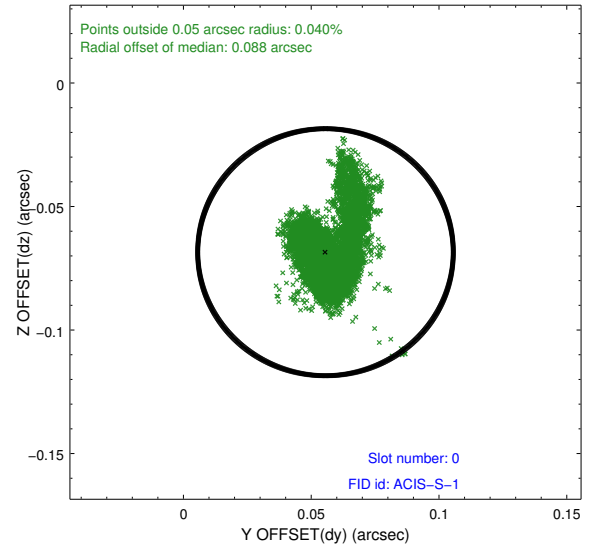
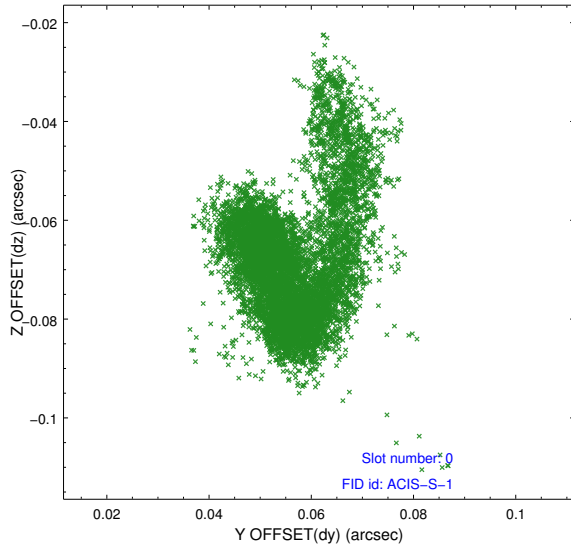


2.4.5 Slot 7

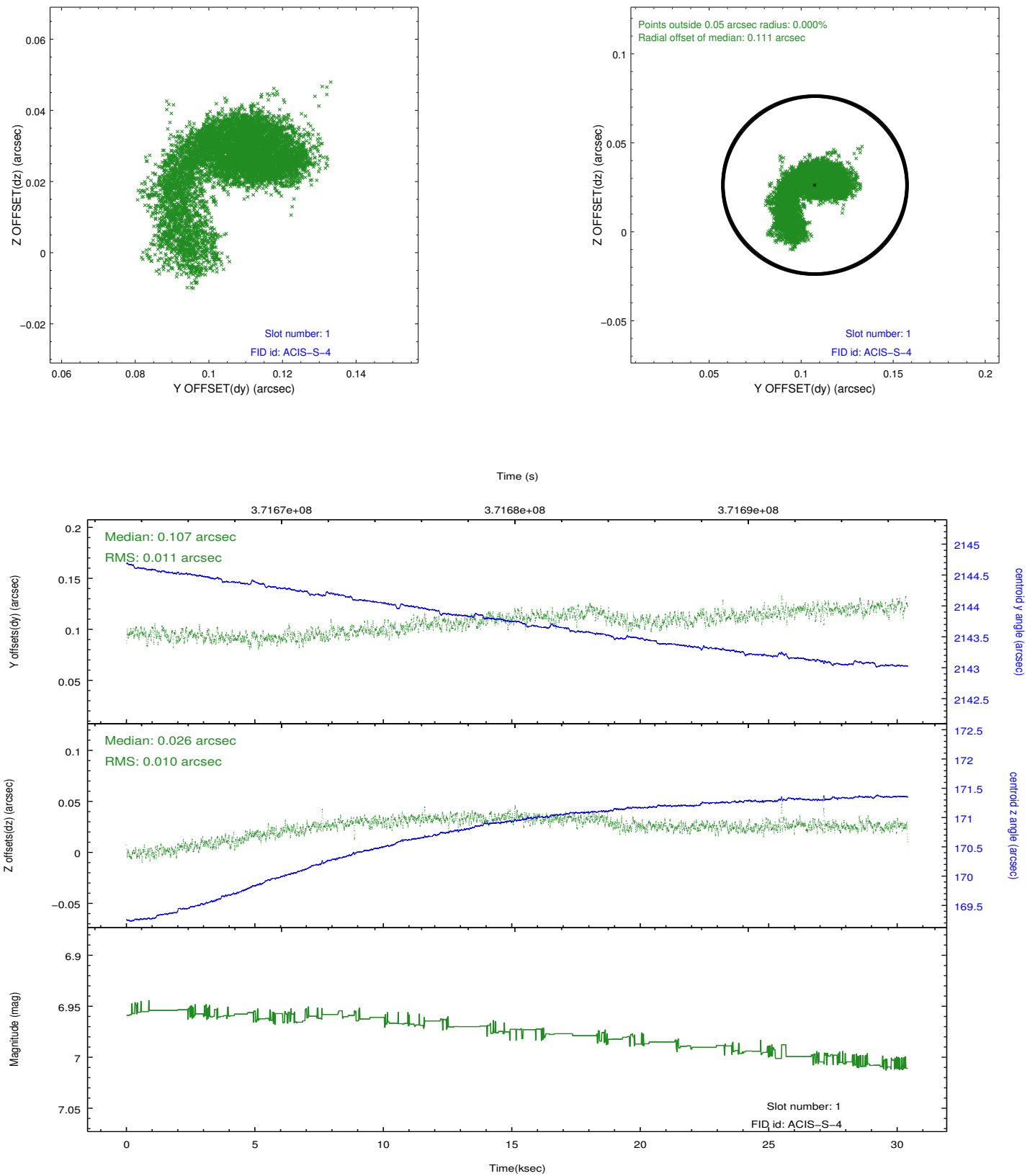


2.5 FID Slots

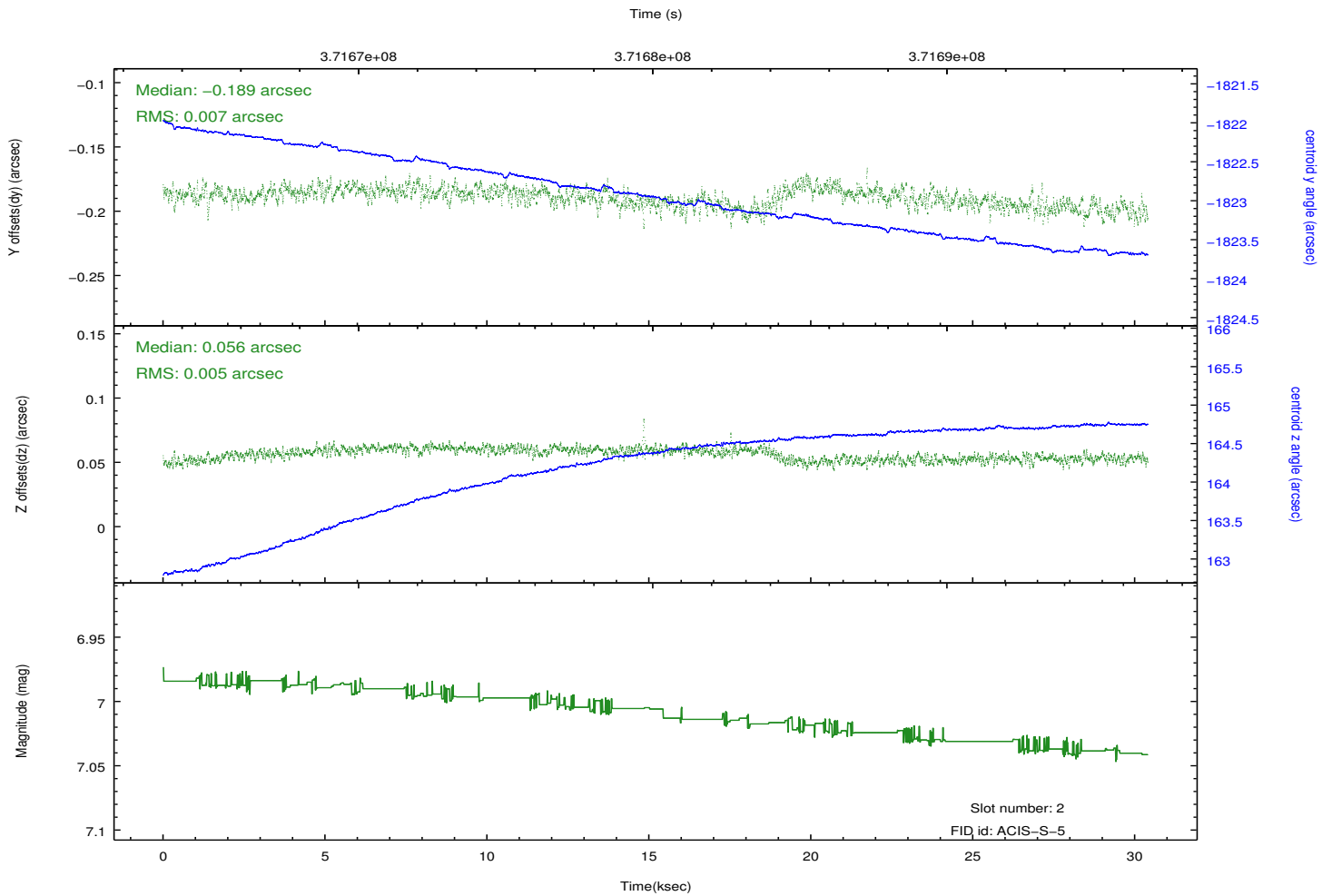
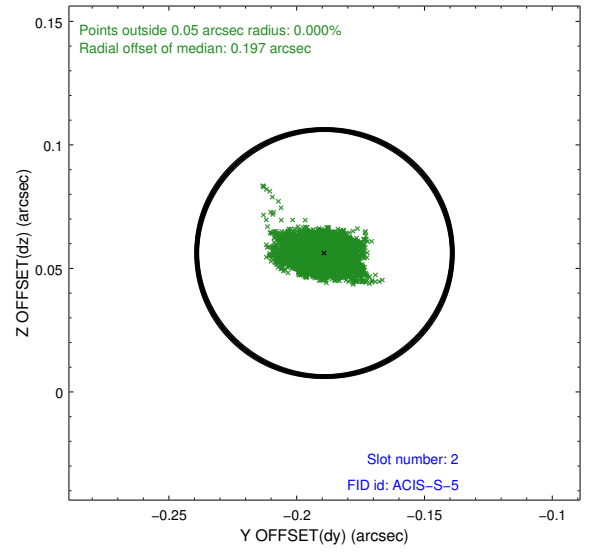
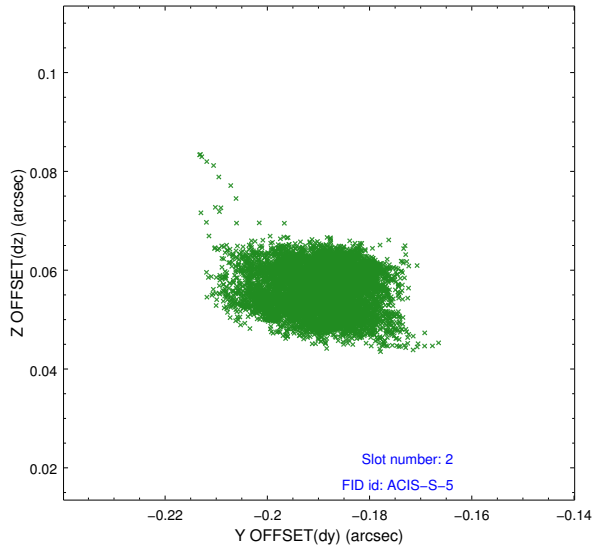
2.5.1 Slot 0



2.5.2 Slot 1



2.5.3 Slot 2



A Summary

A.1 Status

V&V Scientist	Jen Lauer
V&V Date (YYYY-MM-DD)	2012.06.19
V&V Edition	1
V&V Disposition and Status	OK
V&V Charge Time	30.043977396727

A.2 Comments

Joint proposal with NRAO.