

V&V Reference Report

L2 ASCDS Version : 8.4.5

Observation 12225 - L2 Version 2
Chandra X-Ray Center

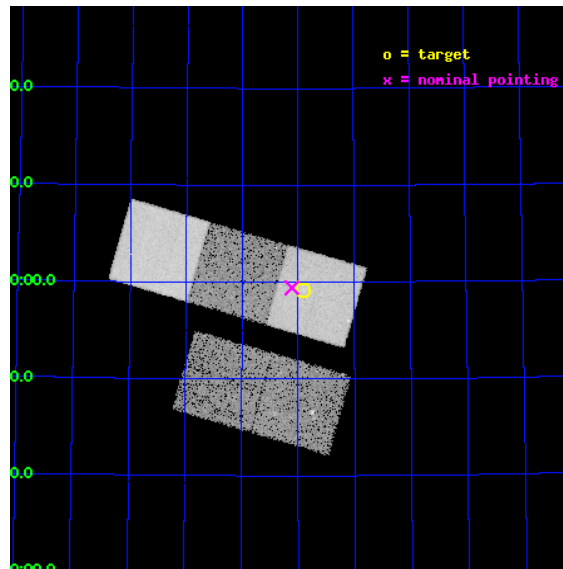
L2 Processing Date : Jun 30 2012

Contents

1	Front	2
2	OBI	3
2.1	OBI	3
2.1.1	Images	3
2.1.2	Bias	3
2.1.3	Parameters	4
2.1.4	Events	4
2.2	Compared Parameters	5
2.3	Aspect	6
2.4	Star Slots	9
2.4.1	Slot 3	9
2.4.2	Slot 4	10
2.4.3	Slot 5	11
2.4.4	Slot 6	12
2.4.5	Slot 7	13
2.5	FID Slots	14
2.5.1	Slot 0	14
2.5.2	Slot 1	15
2.5.3	Slot 2	16
A	Summary	17
A.1	Status	17
A.2	Comments	17

1 Front

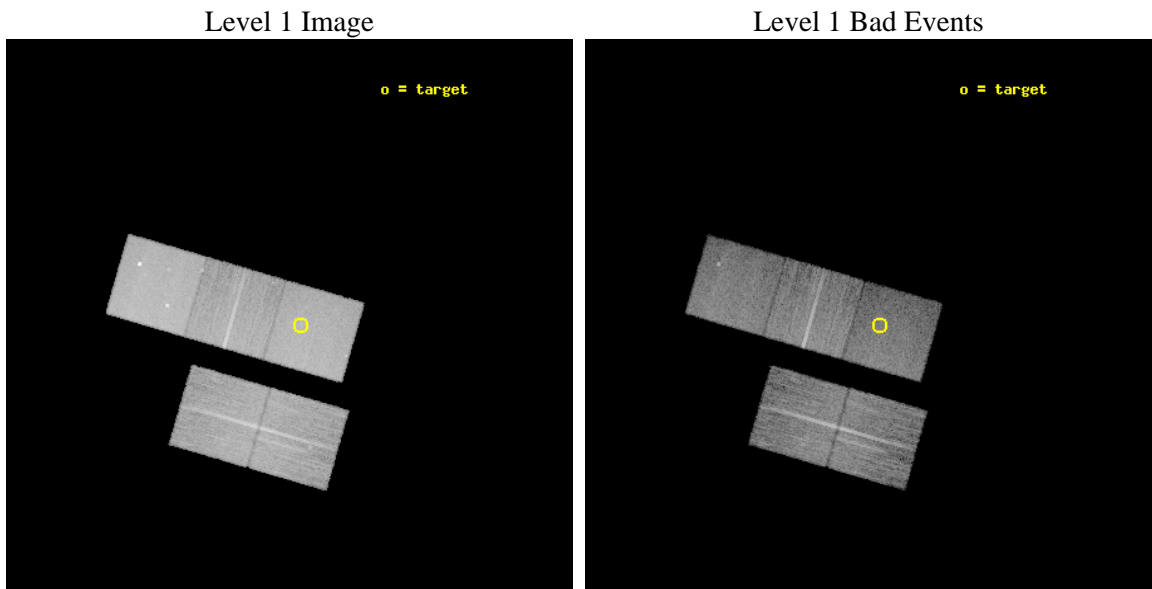
seq_num	800889	Sequence number
obs_id	12225	Observation id
title	Powerful Radio Sources in the Centers of Nearby Clusters	Proposal
observer	Dr Lukasz Stawarz	Principal investigator
object	Abell 0578	Source name
dtycycle	0	
cycle	P	events from which exps? Prim/Second/Both
ra_targ	111.225417	Observer's specified target RA [deg]
dec_targ	66.986222	Observer's specified target Dec [deg]
ra_nom	111.27766050134	Nominal RA [deg]
dec_nom	66.990386545498	Nominal Dec [deg]
roll_nom	16.108536610434	Nominal Roll [deg]
revision	2	Processing version of data
ontime	15041.200115681	Sum of GTIs [s]
livetime	14844.675762999	Livetime [s]
ontime2	15041.153011203	Sum of GTIs [s]
ontime3	15034.912220061	Sum of GTIs [s]
ontime5	15041.200115681	Sum of GTIs [s]
ontime6	15041.200115681	Sum of GTIs [s]
ontime7	15041.200115681	Sum of GTIs [s]
l2events	175465	Number of level 2 events



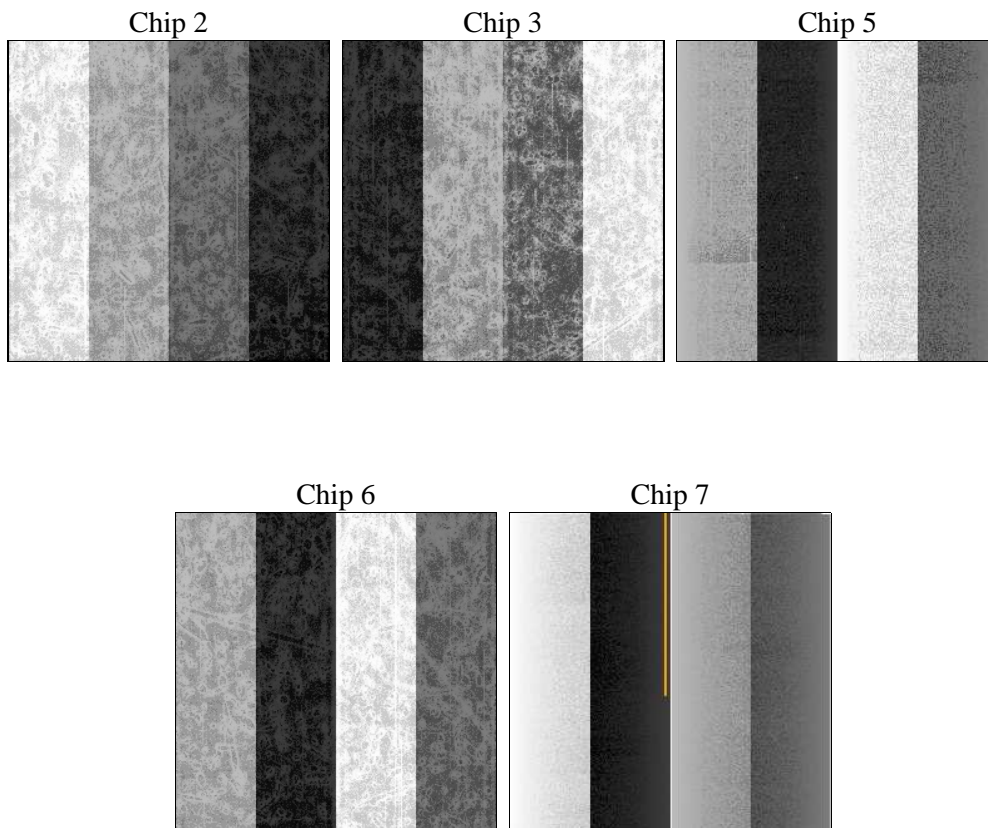
2 OBI

2.1 OBI

2.1.1 Images



2.1.2 Bias



2.1.3 Parameters

obi_num	0	Obi number	sched_exp_time	15000.000000	[s] Scheduled observation exposure time
ascdsver	8.4.5	Processing system revision	ontime	15041.200115681	Sum of GTIs [s]
caldbver	4.5.0	 	ontime2	15041.153011203	Sum of GTIs [s]
date	2012-06-30T13:53:02	Date and time of file creation	ontime3	15034.912220061	Sum of GTIs [s]
revision	2	Processing version of data	ontime5	15041.200115681	Sum of GTIs [s]
			ontime6	15041.200115681	Sum of GTIs [s]
			ontime7	15041.200115681	Sum of GTIs [s]
			l1events	660639	Number of level 1 events

2.1.4 Events

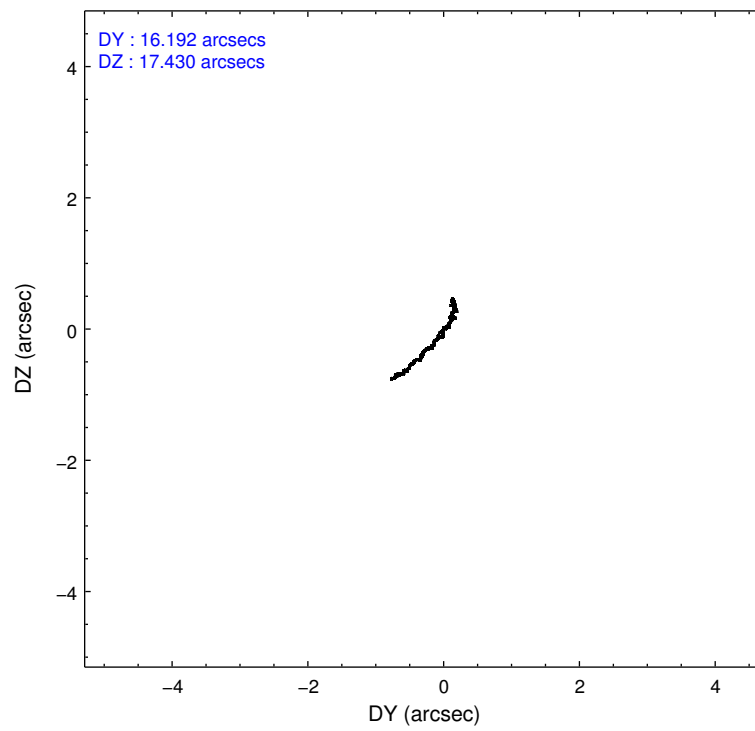
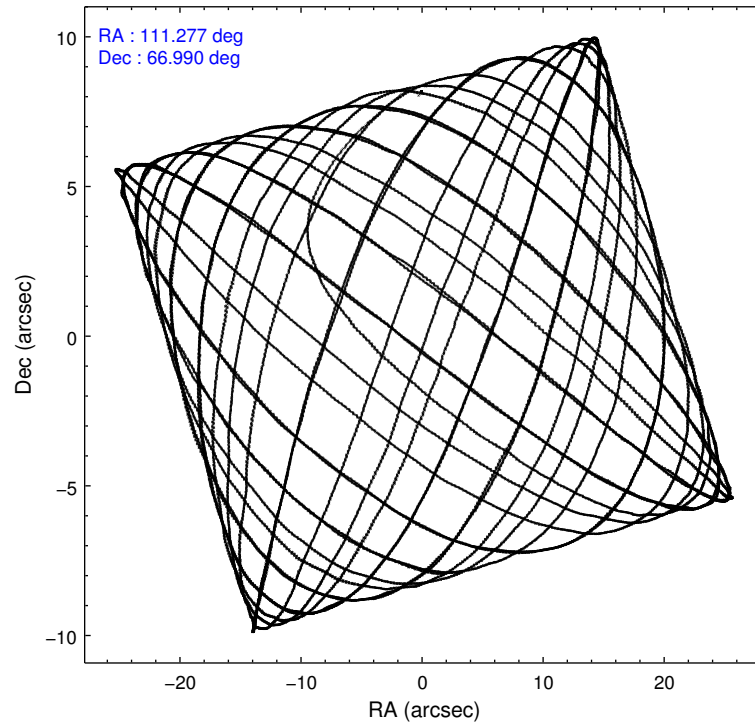
	ccd 2	ccd 3	ccd 5	ccd 6	ccd 7
level 1 events	113984	112265	172999	119472	141919
rejected events	101880	100118	87441	106386	76684
rejected %	89%	89%	50%	89%	54%

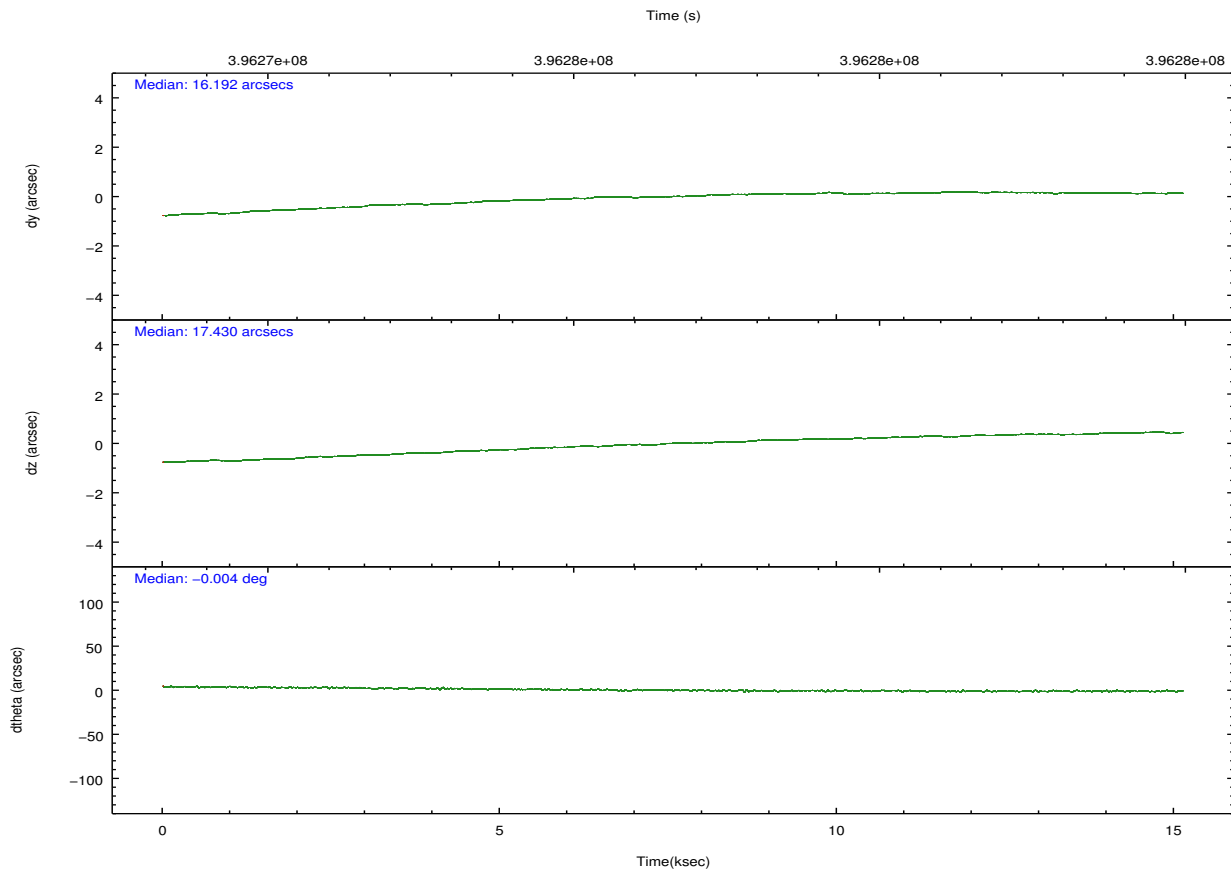
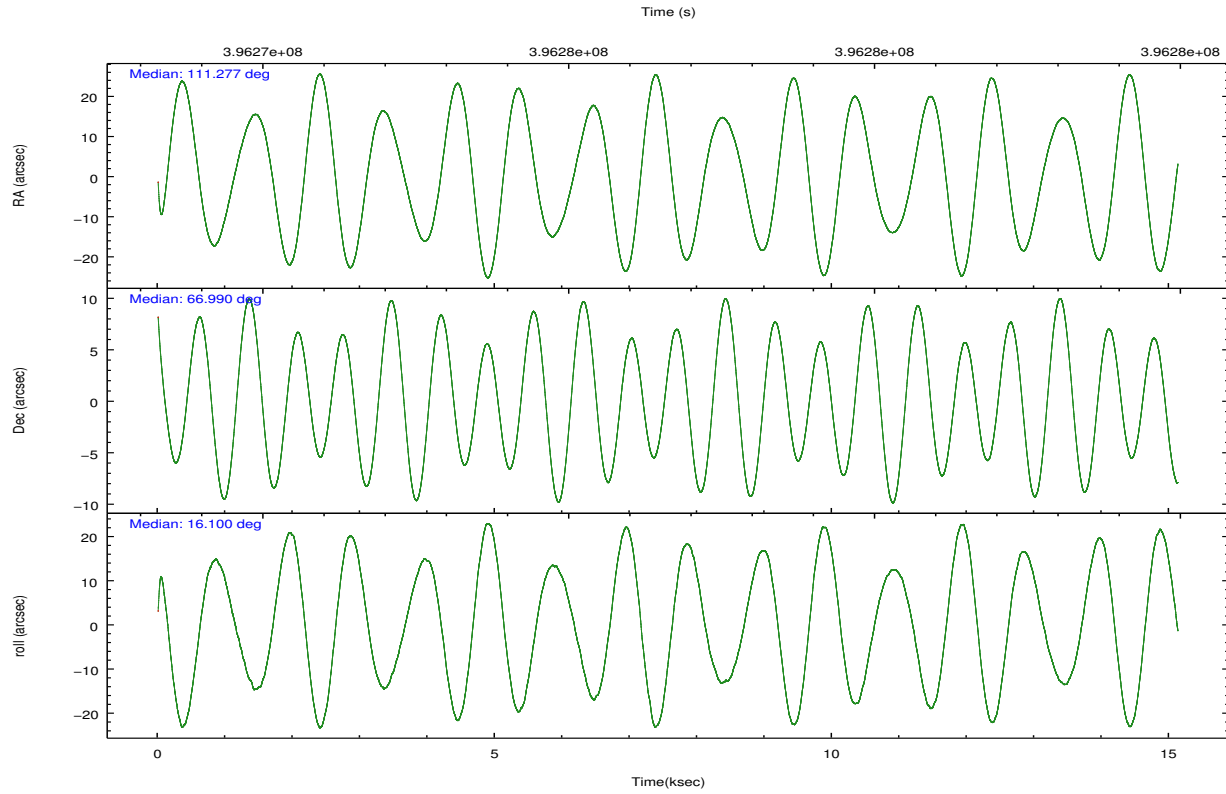
	ccd 2	ccd 3	ccd 5	ccd 6	ccd 7
grade 0 events	4262	4572	7205	4706	6578
	3%	4%	4%	3%	4%
grade 1 events	72	75	373	69	156
	0%	0%	0%	0%	0%
grade 2 events	3094	2591	27321	2871	13387
	2%	2%	15%	2%	9%
grade 3 events	1205	1286	3174	1354	5855
	1%	1%	1%	1%	4%
grade 4 events	1309	1298	3164	1393	5814
	1%	1%	1%	1%	4%
grade 5 events	4167	5243	13285	5124	14595
	3%	4%	7%	4%	10%
grade 6 events	2236	2401	44708	2764	33613
	1%	2%	25%	2%	23%
grade 7 events	97639	94799	73769	101191	61921
	85%	84%	42%	84%	43%

2.2 Compared Parameters

Parameter	Planned	Actual	Parameter	Planned	Actual
Instrument	ACIS	ACIS	Obspar format version number	7	7
Detector	ACIS-23567	ACIS-23567	Obspar file type	PREDICTED	ACTUAL
Grating	NONE	NONE	Obspar update status	NONE	UPDATED
Data mode	VFAINT	VFAINT	Number of optional ACIS chips dropped	0	0
Observation mode	POINTING	POINTING	On-chip summing requested	N	N
[deg] Pointing RA	111.229911	111.2776605013421	Subarray requested	NONE	NONE
[deg] Pointing Dec	66.970421	66.99038654549761	Alternating exposures requested	N	N
[deg] Pointing Roll	15.995862	16.10853661043373	[s] Primary exposure time	0.000000	3.1
[mm] SIM focus pos	-0.684267	-0.6828225247311905			
[mm] SIM defocus	0	0.001444936568705701			
[mm] SIM translation stage pos	-190.132523	-190.1425803651734			
[mm] SIM translation stage offset	0	0.01005778216563158			
[s] Observation start time (MET)	396269198.184000	396267806.30511			
Observation start date	2010-07-23T10:45:32	2010-07-23T10:23:26			
[s] Observation end time (MET)	396284198.184000	396284714.70597			
Observation end date	2010-07-23T14:55:32	2010-07-23T15:05:14			
Read mode	TIMED	TIMED			

2.3 Aspect



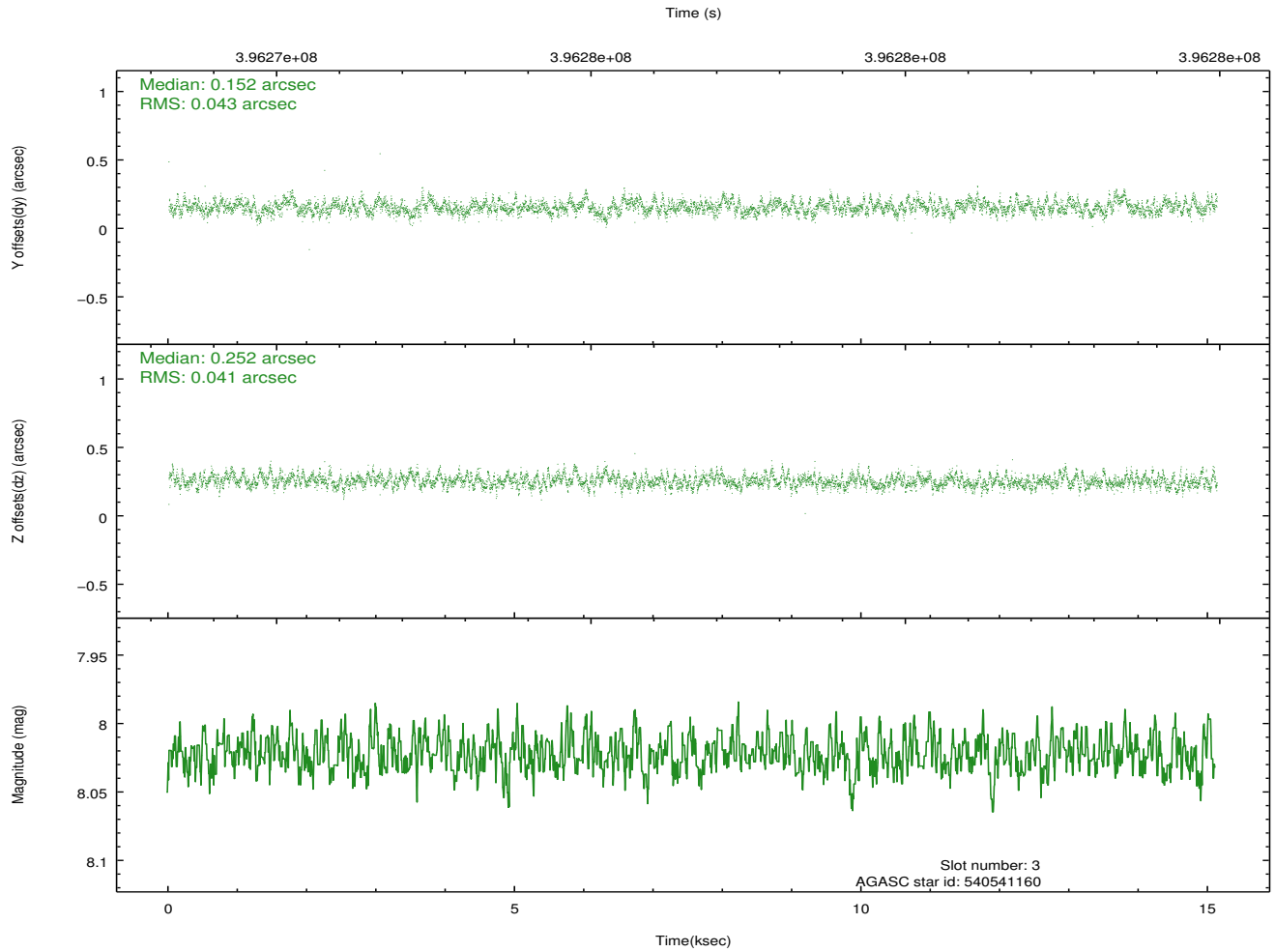
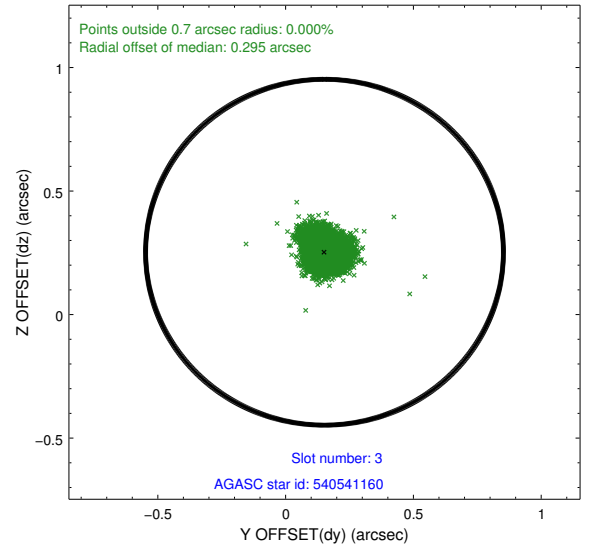
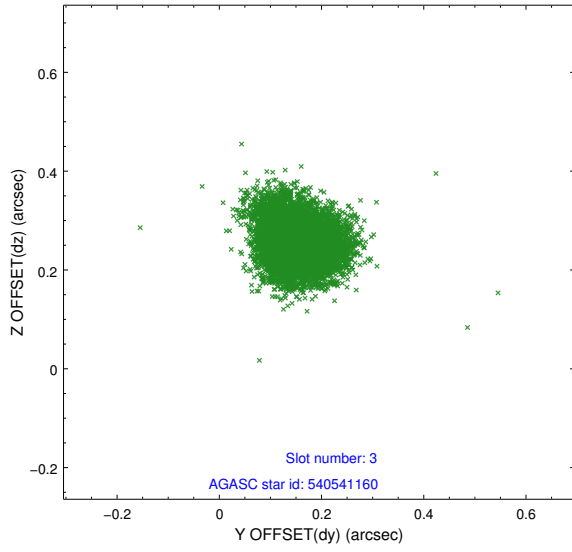


Slot Statistics

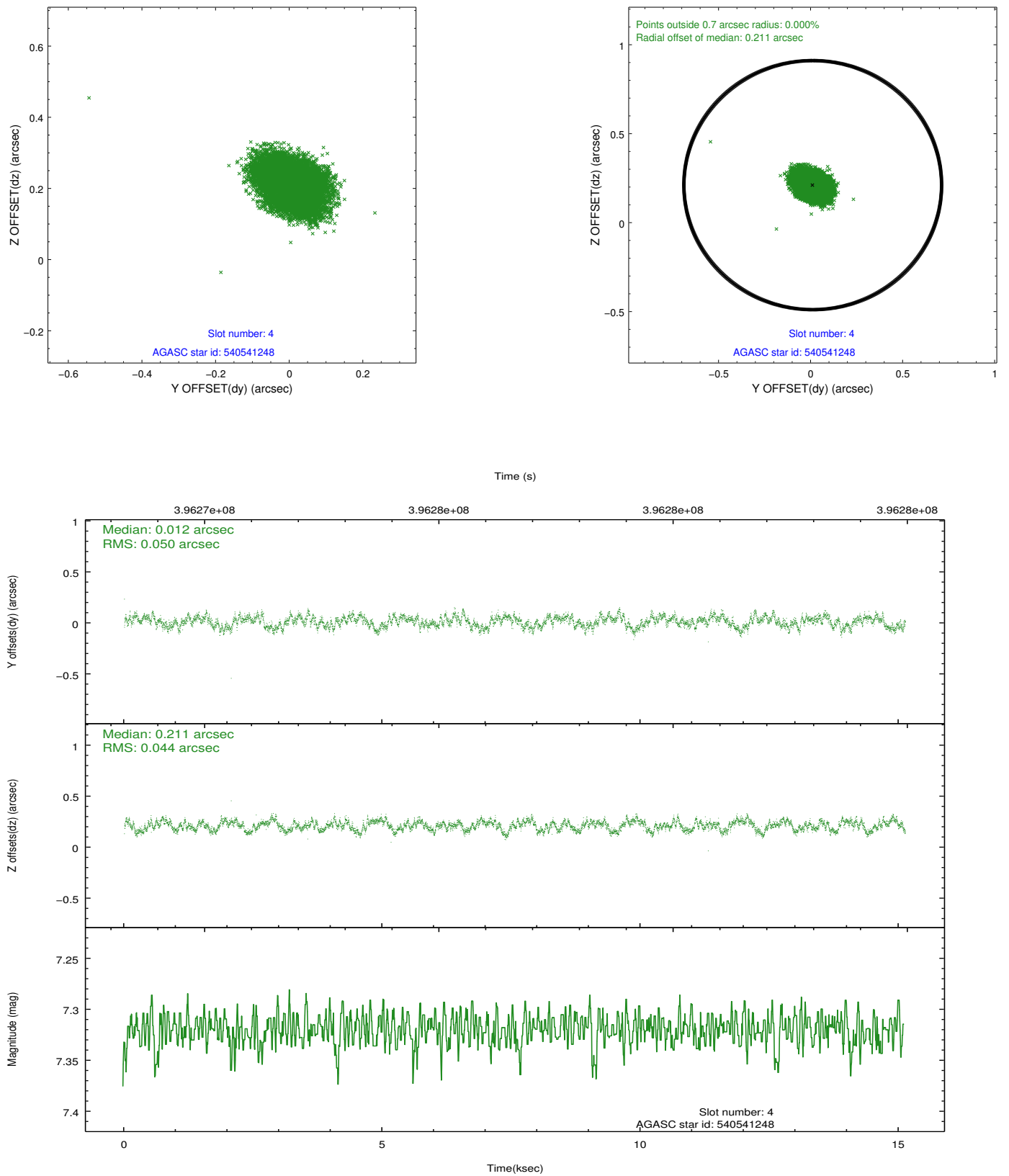
slot	status	id	mag	n_pts	med_dy	med_dz	dr1	dr2	ra	dec	mean_y	mean_z
0	FID	ACIS-S-1	6.95	3690	0.122	-0.047	0.014	0.020	0.000000	0.000000	927.02	-1734.45
1	FID	ACIS-S-2	6.88	3690	-0.117	0.015	0.010	0.015	0.000000	0.000000	-768.95	-1739.21
2	FID	ACIS-S-6	7.10	3690	-0.025	0.034	0.013	0.020	0.000000	0.000000	392.46	806.67
3	GUIDE	540541160	8.02	7380	0.152	0.252	0.063	0.103	112.017117	66.491077	613.67	-1963.76
4	GUIDE	540541248	7.32	7378	0.012	0.211	0.071	0.111	112.105278	66.872131	1095.30	-672.85
5	GUIDE	571476656	8.17	7372	-0.145	-0.497	0.070	0.112	111.989788	67.671491	1696.41	2145.48
6	GUIDE	540419248	8.02	7379	0.040	0.036	0.074	0.118	111.293899	67.147179	261.78	587.24
7	GUIDE	540553864	6.99	7379	-0.066	-0.010	0.081	0.129	111.857672	66.331570	240.35	-2456.41

2.4 Star Slots

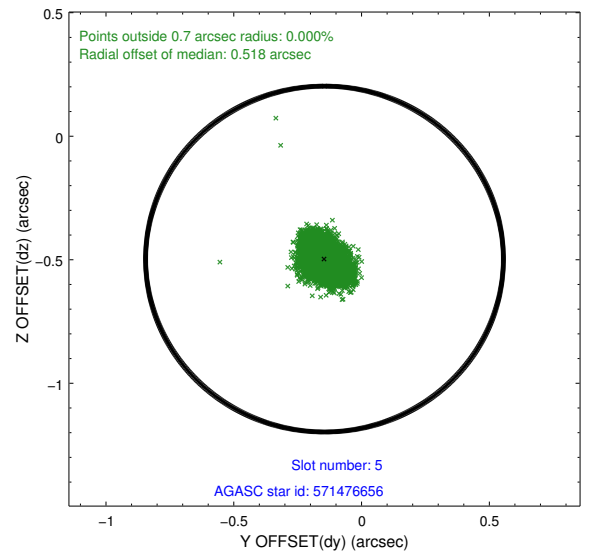
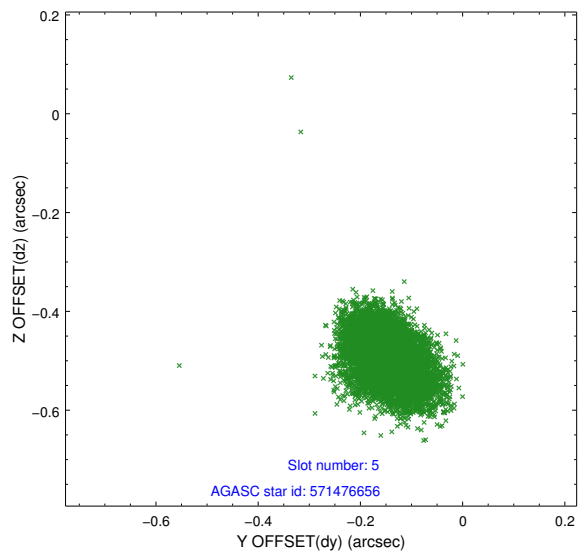
2.4.1 Slot 3



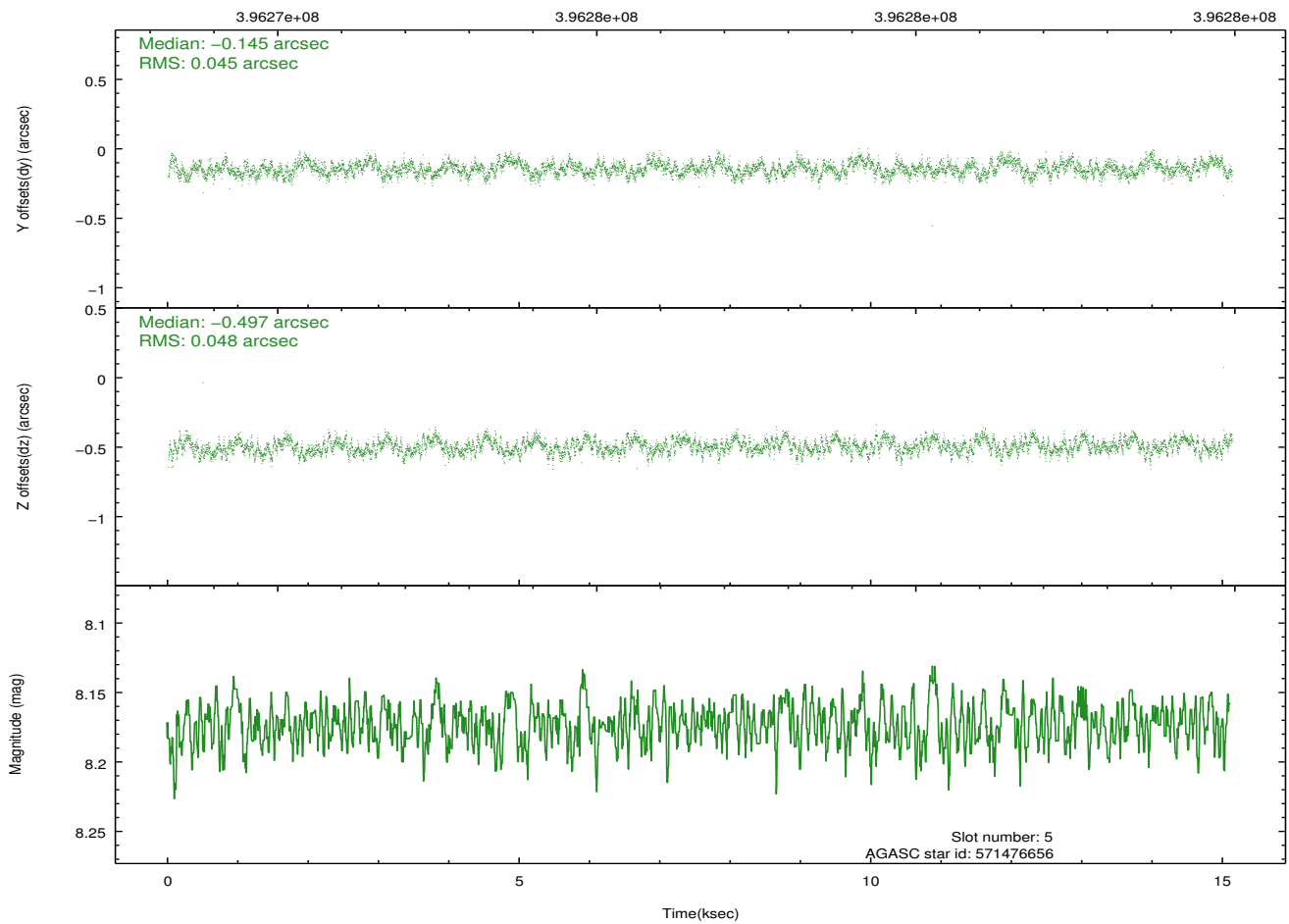
2.4.2 Slot 4



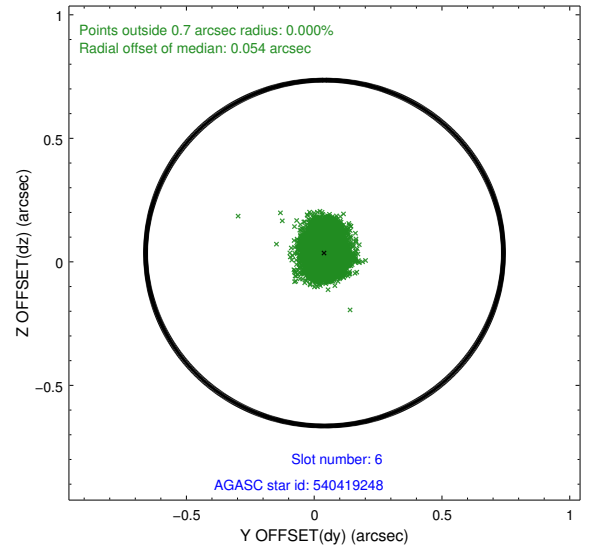
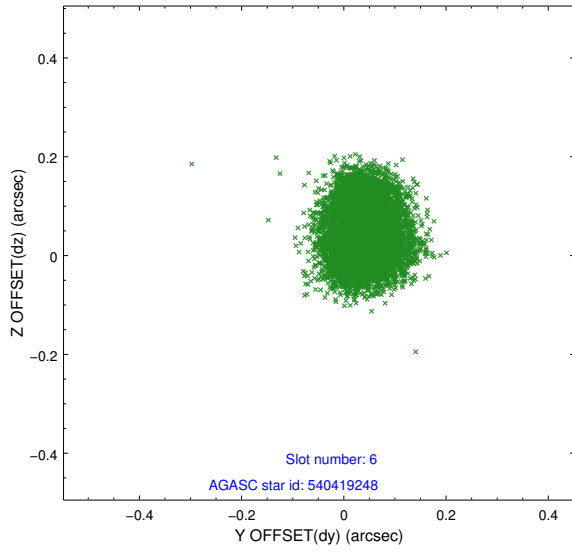
2.4.3 Slot 5



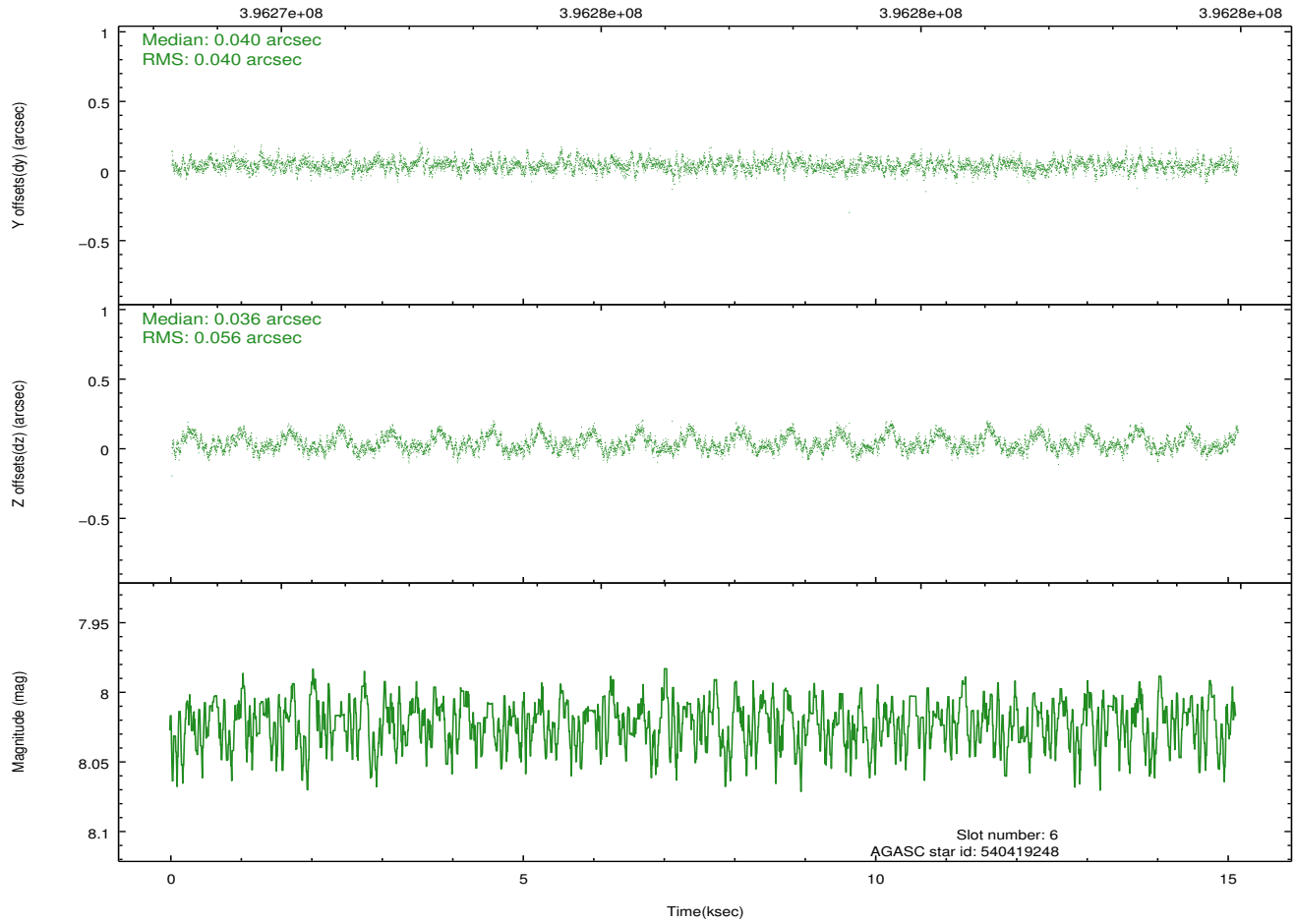
Time (s)



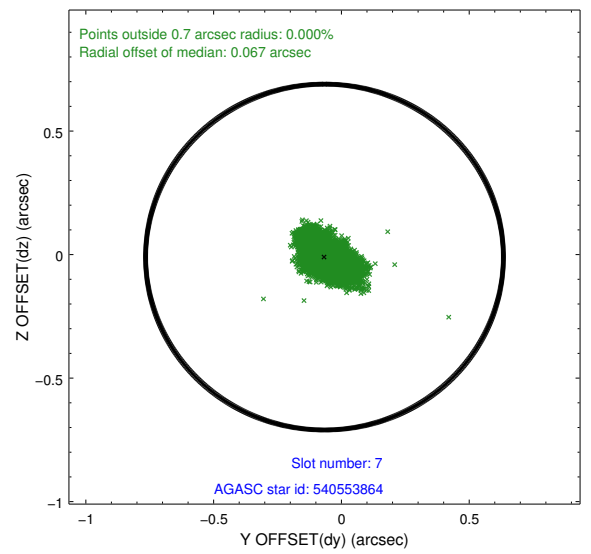
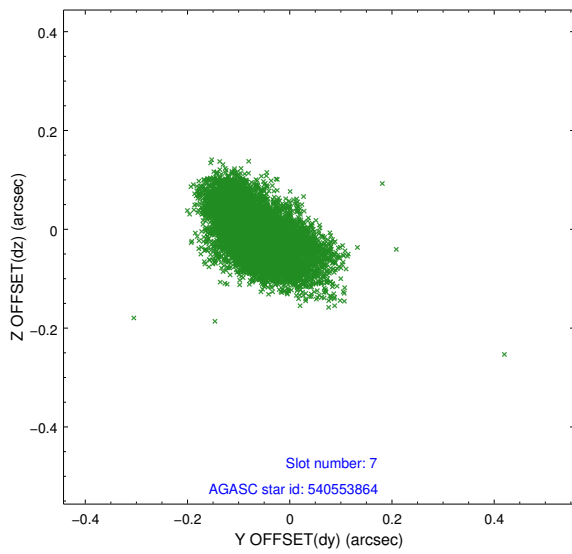
2.4.4 Slot 6



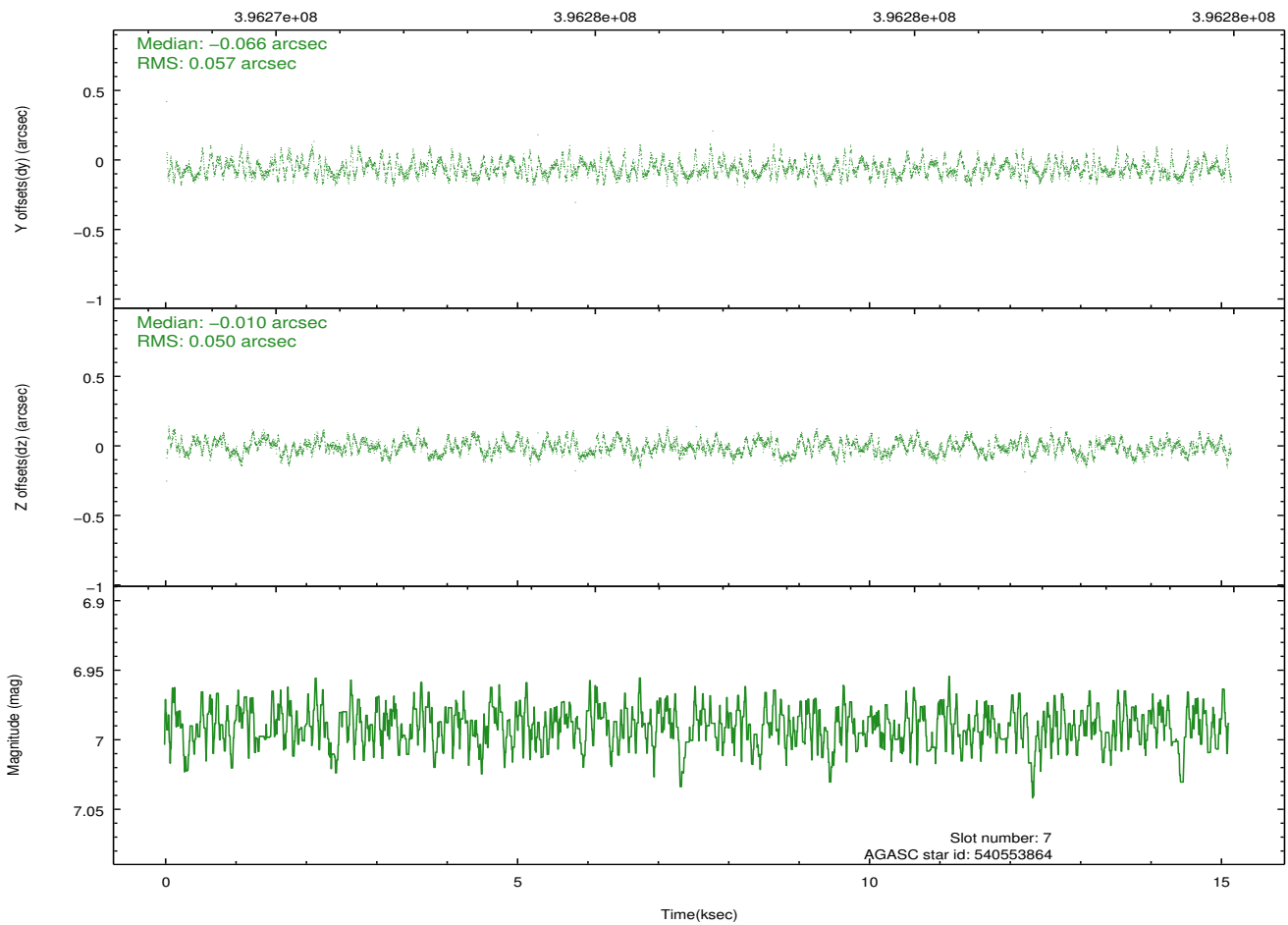
Time (s)



2.4.5 Slot 7

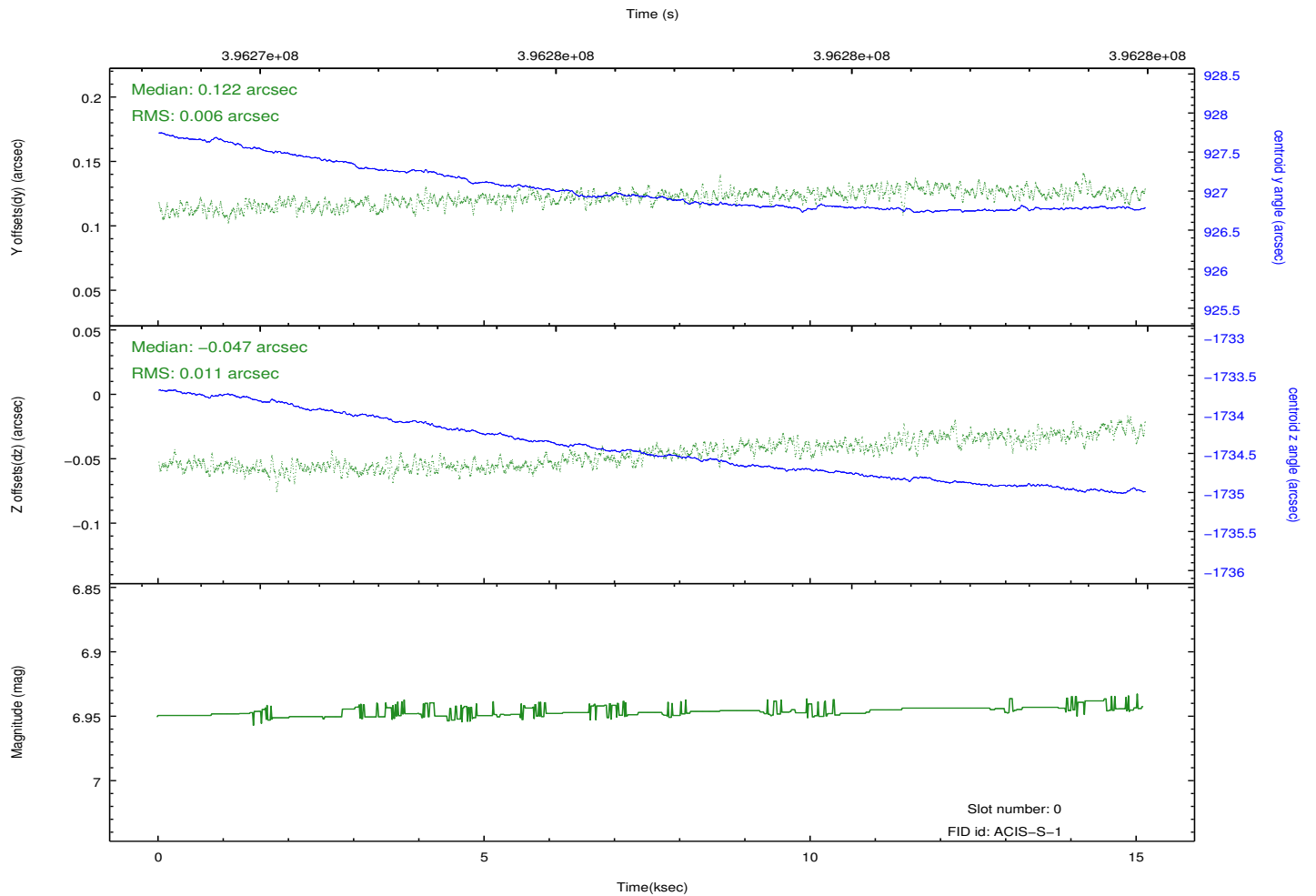
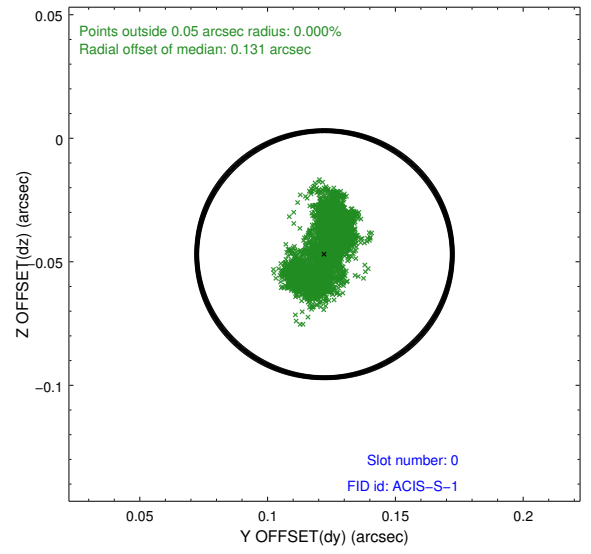
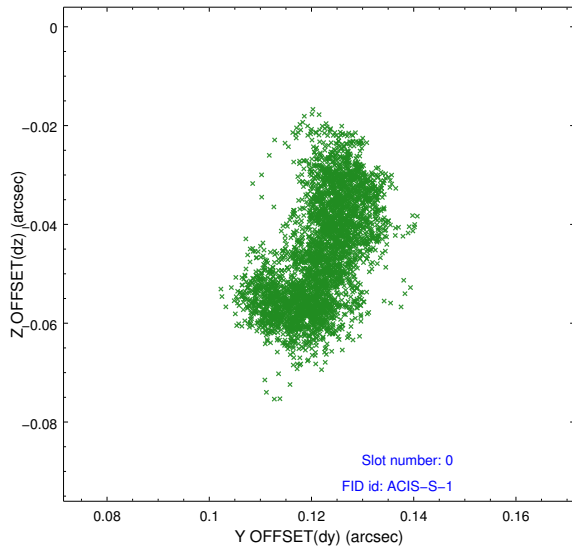


Time (s)

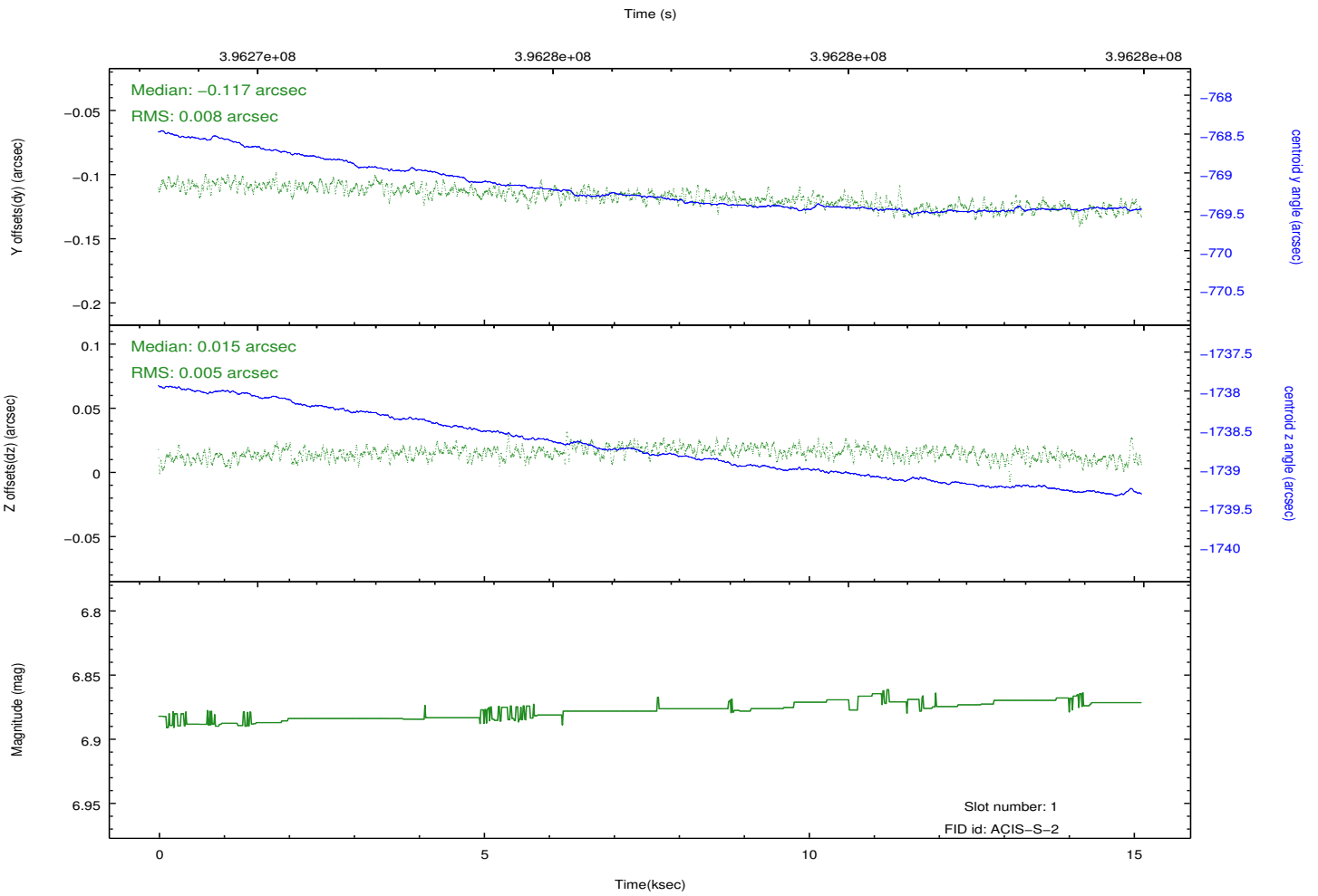
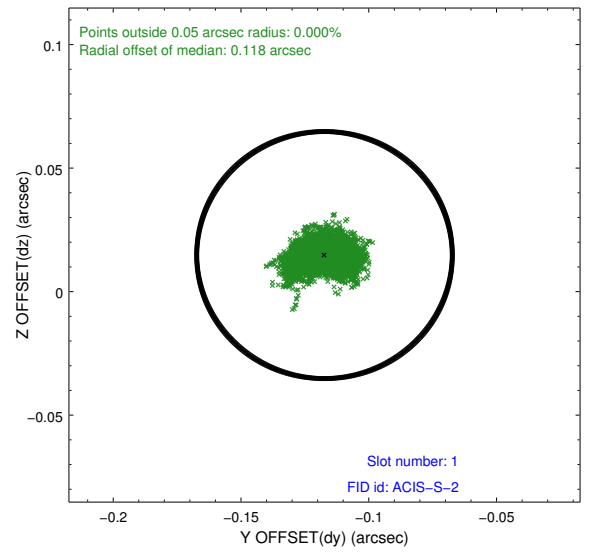
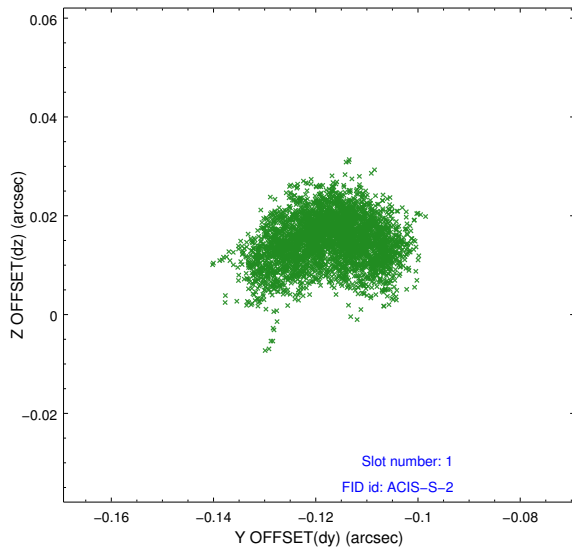


2.5 FID Slots

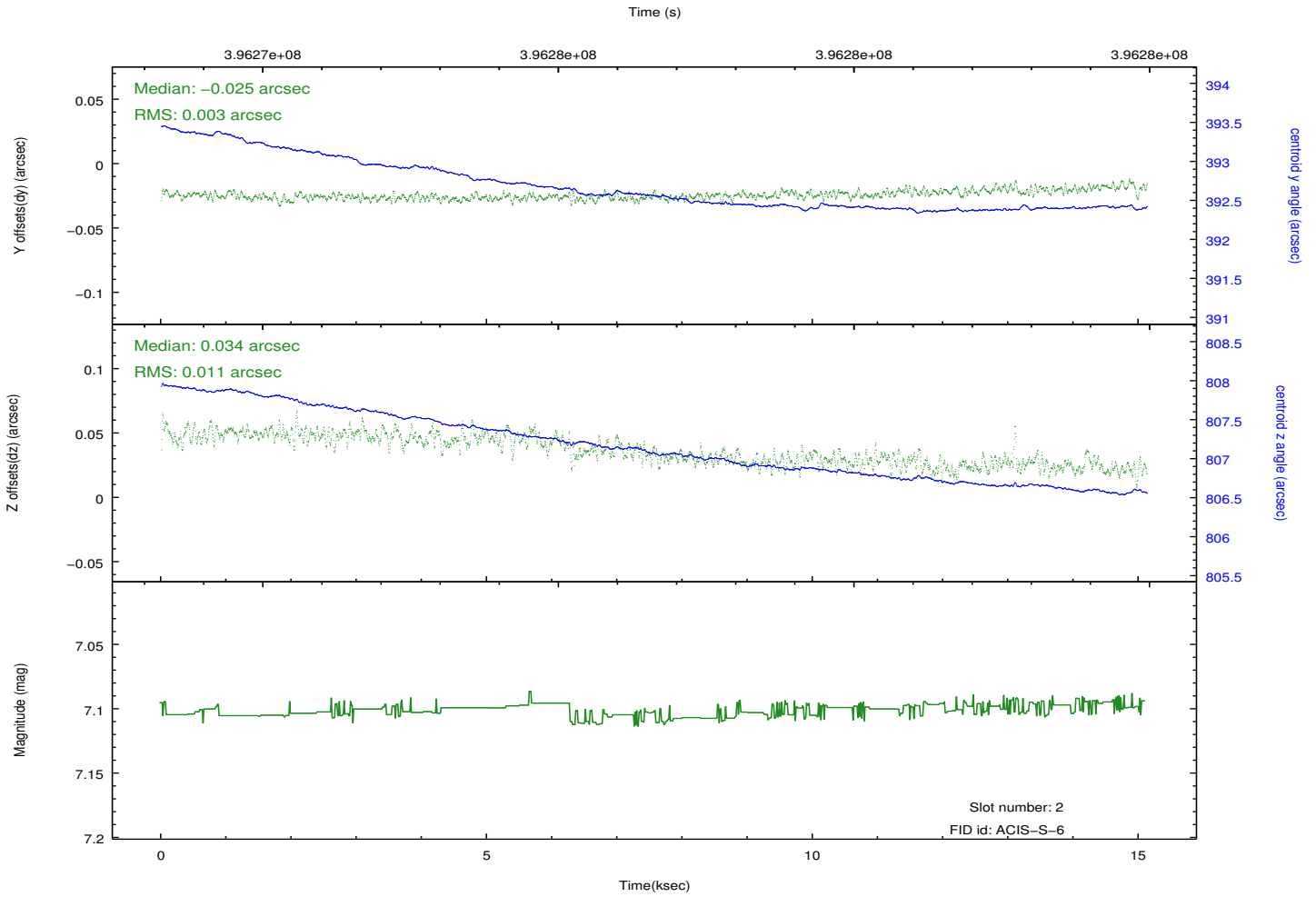
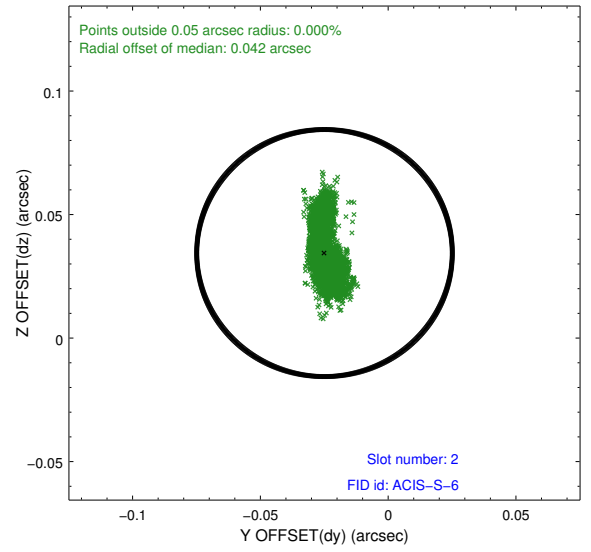
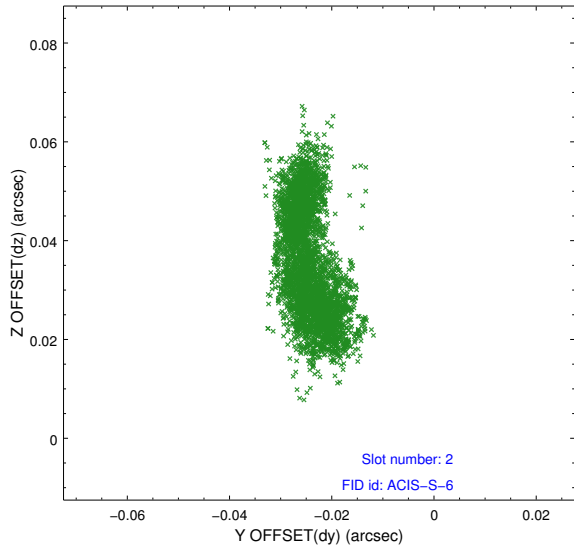
2.5.1 Slot 0



2.5.2 Slot 1



2.5.3 Slot 2



A Summary

A.1 Status

V&V Scientist	Jen Lauer
V&V Date (YYYY-MM-DD)	2012.07.09
V&V Edition	1
V&V Disposition and Status	OK
V&V Charge Time	15.041200115681

A.2 Comments

Joint Proposal: XMM