

V&V Reference Report

L2 ASCDS Version : 8.4.3

Observation 12265 - L2 Version 2
Chandra X-Ray Center

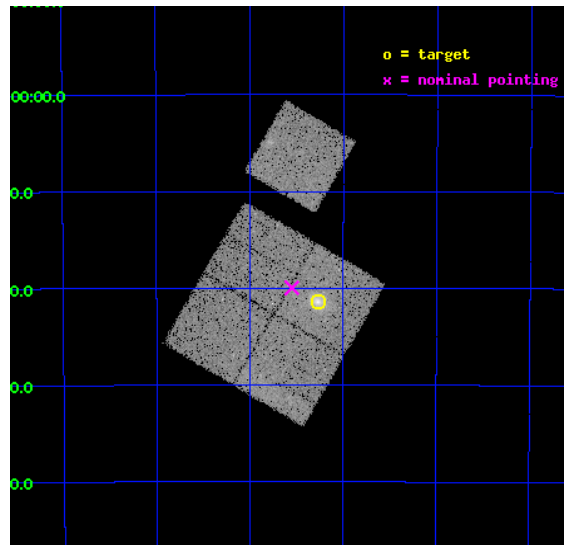
L2 Processing Date : Feb 24 2012

Contents

1	Front	2
2	OBI	3
2.1	OBI	3
2.1.1	Images	3
2.1.2	Bias	3
2.1.3	Parameters	4
2.1.4	Events	4
2.2	Compared Parameters	5
2.3	Aspect	6
2.4	Star Slots	9
2.4.1	Slot 3	9
2.4.2	Slot 4	10
2.4.3	Slot 5	11
2.4.4	Slot 6	12
2.4.5	Slot 7	13
2.5	FID Slots	14
2.5.1	Slot 0	14
2.5.2	Slot 1	15
2.5.3	Slot 2	16
A	Summary	17
A.1	Status	17
A.2	Comments	17

1 Front

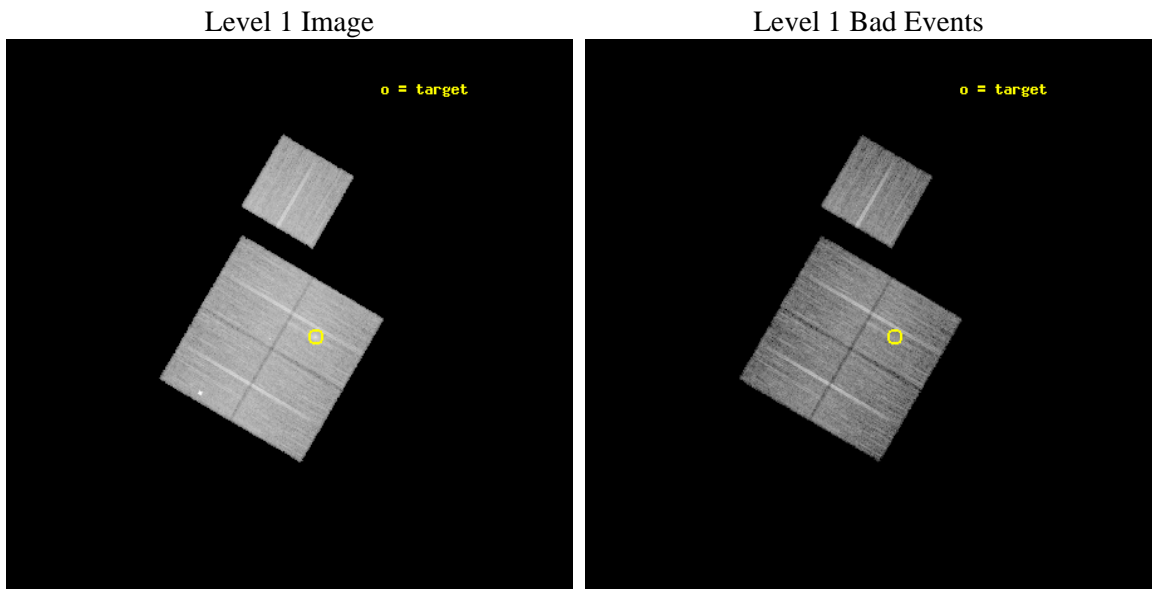
seq_num	800984	Sequence number
obs_id	12265	Observation id
title	Chandra Observations of the ACT Sample of SZE-Selected Galaxy Clusters	Proposal title
observer	Prof John Hughes	Principal investigator
object	ACT J0304-4921	Source name
dtcycle	0	
cycle	P	events from which exps? Prim/Second/Both
ra_targ	46.067292	Observer's specified target RA [deg]
dec_targ	-49.357278	Observer's specified target Dec [deg]
ra_nom	46.137541252162	Nominal RA [deg]
dec_nom	-49.332833158316	Nominal Dec [deg]
roll_nom	30.261959138778	Nominal Roll [deg]
revision	2	Processing version of data
ontime	21055.159151614	Sum of GTIs [s]
livetime	20780.057996715	Livetime [s]
ontime0	21058.300161958	Sum of GTIs [s]
ontime1	21055.15914166	Sum of GTIs [s]
ontime2	21058.300161958	Sum of GTIs [s]
ontime3	21055.159151614	Sum of GTIs [s]
ontime6	21058.300161958	Sum of GTIs [s]
l2events	65685	Number of level 2 events



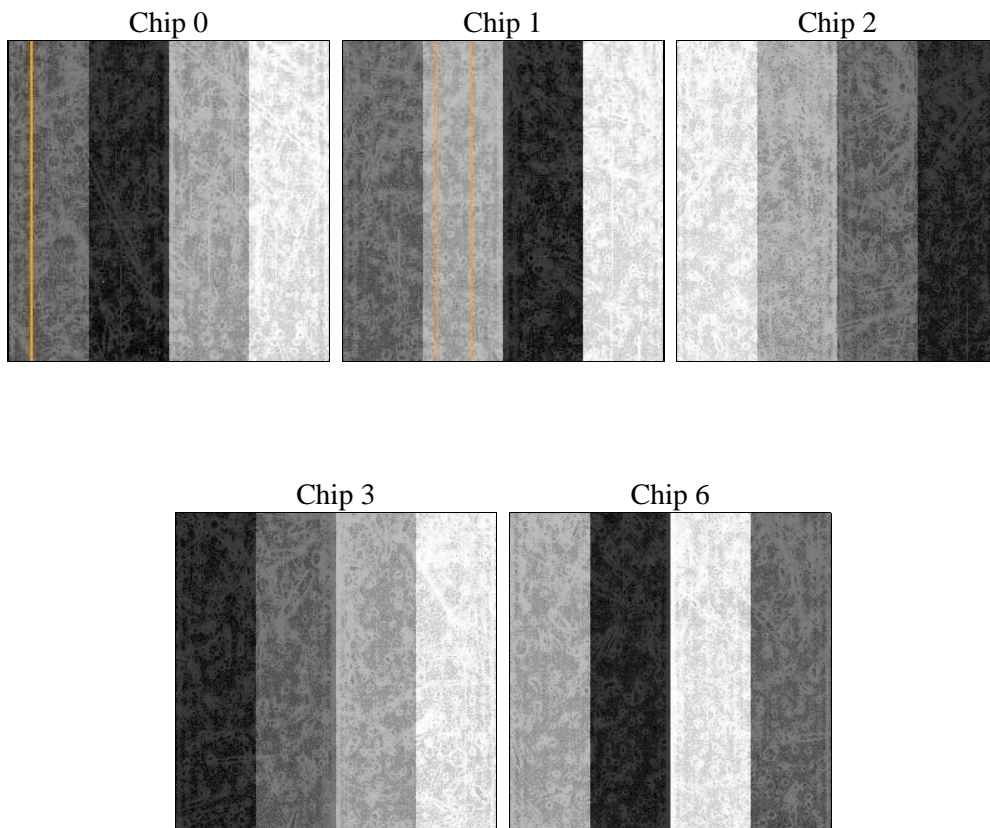
2 OBI

2.1 OBI

2.1.1 Images



2.1.2 Bias



2.1.3 Parameters

obi_num	0	Obi number	sched_exp_time	21000.000000	[s] Scheduled observation exposure time
ascdsver	8.4.3	Processing system revision	ontime	21055.159151614	Sum of GTIs [s]
caldbver	4.4.8	 	ontime0	21058.300161958	Sum of GTIs [s]
date	2012-02-24T04:47:09	Date and time of file creation	ontime1	21055.15914166	Sum of GTIs [s]
revision	2	Processing version of data	ontime2	21058.300161958	Sum of GTIs [s]
			ontime3	21055.159151614	Sum of GTIs [s]
			ontime6	21058.300161958	Sum of GTIs [s]
			l1events	613947	Number of level 1 events

2.1.4 Events

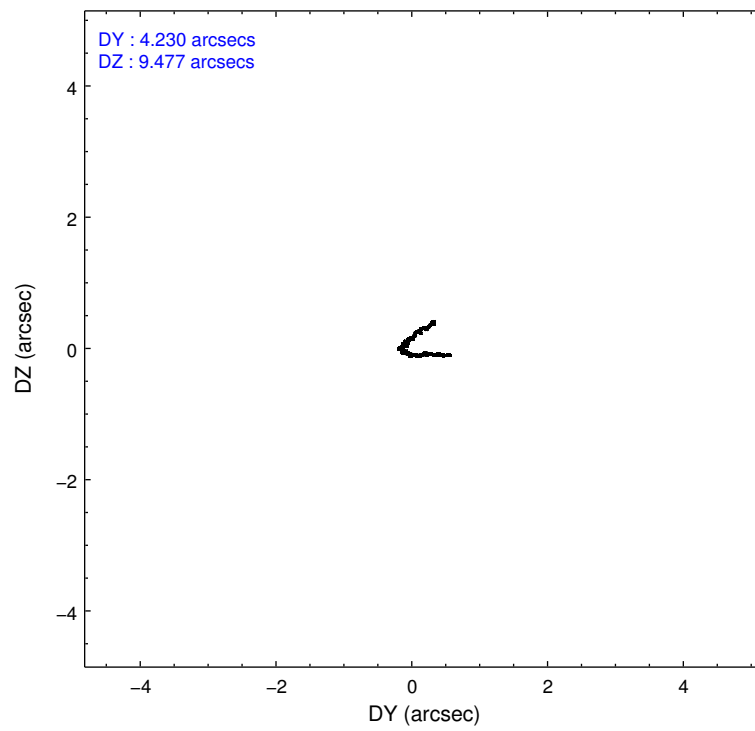
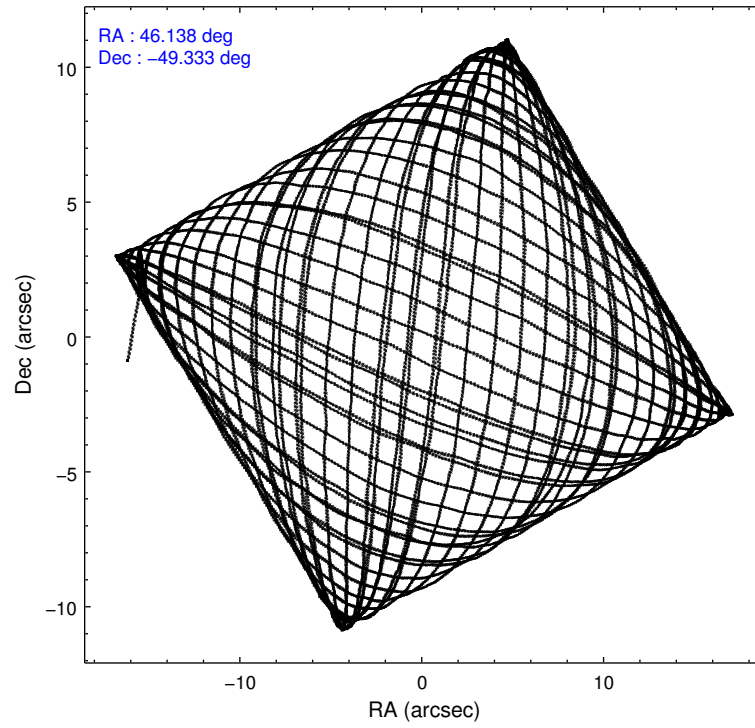
	ccd 0	ccd 1	ccd 2	ccd 3	ccd 6
level 1 events	118228	116975	124075	128530	126139
rejected events	101333	100899	109788	110808	111407
rejected %	85%	86%	88%	86%	88%

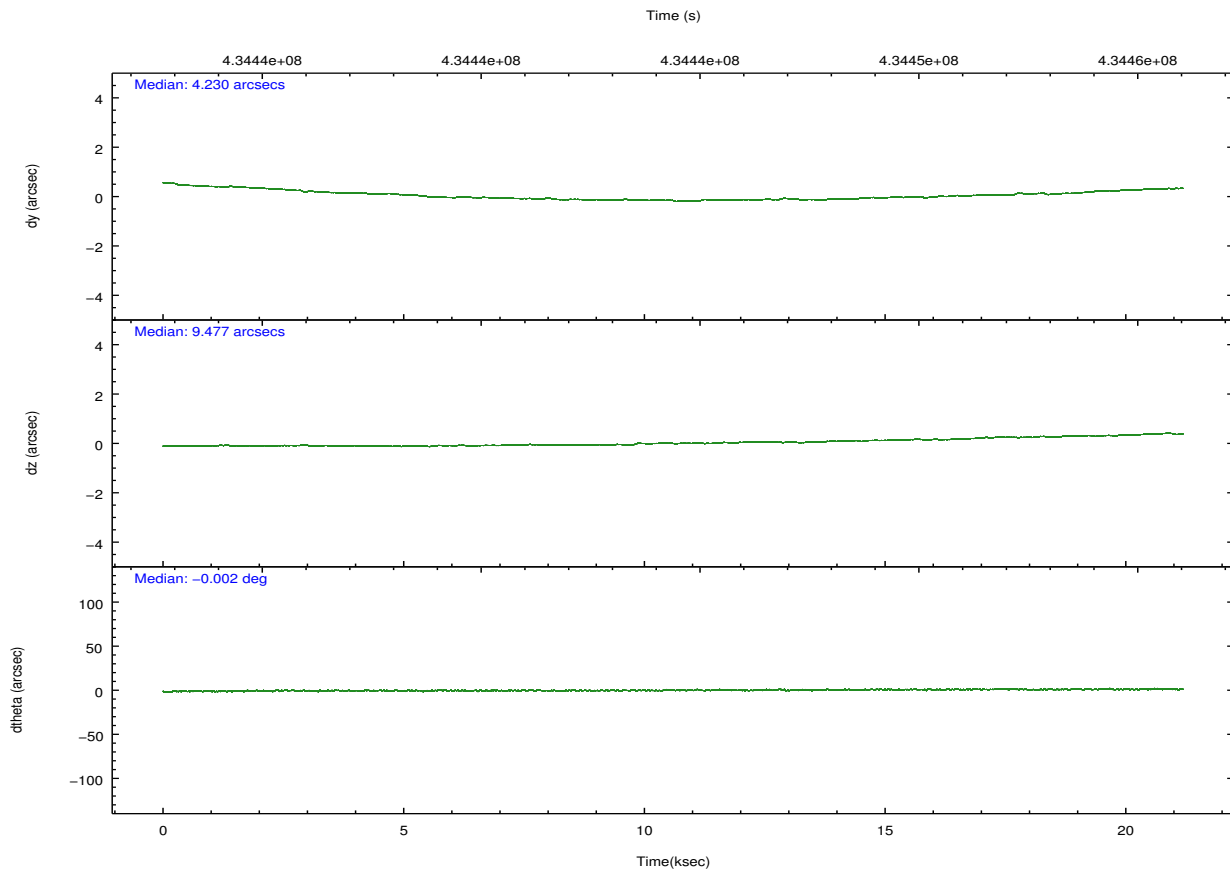
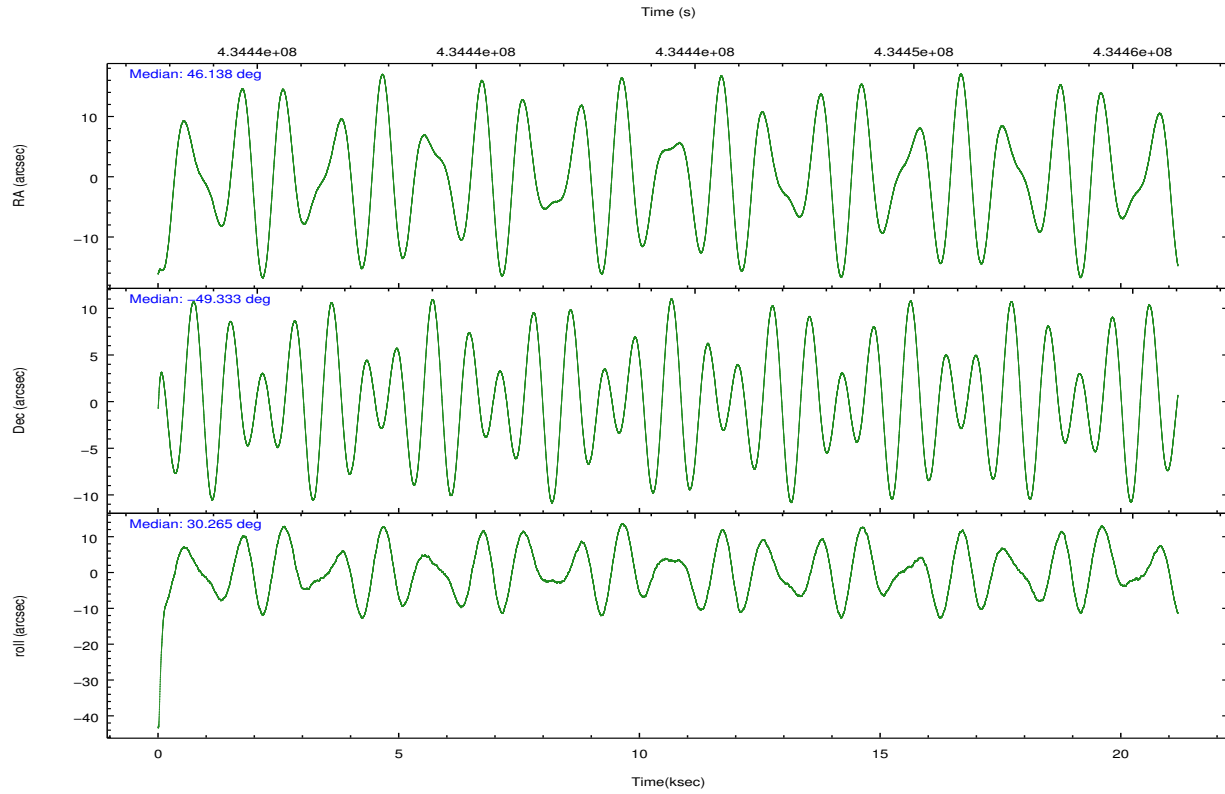
	ccd 0	ccd 1	ccd 2	ccd 3	ccd 6
grade 0 events	7729	5690	5157	8128	5286
	6%	4%	4%	6%	4%
grade 1 events	94	46	80	104	55
	0%	0%	0%	0%	0%
grade 2 events	3383	3833	3413	3506	3157
	2%	3%	2%	2%	2%
grade 3 events	1547	1497	1469	1568	1536
	1%	1%	1%	1%	1%
grade 4 events	1384	1560	1481	1627	1451
	1%	1%	1%	1%	1%
grade 5 events	5683	5817	5259	6295	6015
	4%	4%	4%	4%	4%
grade 6 events	2853	3496	2769	2896	3307
	2%	2%	2%	2%	2%
grade 7 events	95555	95036	104447	104406	105332
	80%	81%	84%	81%	83%

2.2 Compared Parameters

Parameter	Planned	Actual	Parameter	Planned	Actual
Instrument	ACIS	ACIS	Obspar format version number	7	7
Detector	ACIS-01236	ACIS-01236	Obspar file type	PREDICTED	ACTUAL
Grating	NONE	NONE	Obspar update status	NONE	UPDATED
Data mode	VFAINT	VFAINT	CCD I0 on	Y	Y
Observation mode	POINTING	POINTING	CCD I1 on	Y	Y
[deg] Pointing RA	46.116762	46.13754125216158	CCD I2 on	Y	Y
[deg] Pointing Dec	-49.356747	-49.33283315831623	CCD I3 on	Y	Y
[deg] Pointing Roll	30.037527	30.26195913877804	CCD S0 on	N	N
[mm] SIM focus pos	-0.782348	-0.7809083437167272	CCD S1 on	N	N
[mm] SIM defocus	0	0.001439871863259334	CCD S2 on	O1	Y
[mm] SIM translation stage pos	-225.792463	-225.785514080088	CCD S3 on	N	N
[mm] SIM translation stage offset	-7.8	-7.806938922841681	CCD S4 on	N	N
[s] Observation start time (MET)	434433979.184000	434432962.33491	CCD S5 on	N	N
Observation start date	2011-10-08T04:05:13	2011-10-08T03:49:22	Number of optional ACIS chips dropped	0	0
[s] Observation end time (MET)	434454979.184000	434455692.7361	On-chip summing requested	N	N
Observation end date	2011-10-08T09:55:13	2011-10-08T10:08:12	Subarray requested	NONE	NONE
Read mode	TIMED	TIMED	Alternating exposures requested	N	N
			[s] Primary exposure time	0.000000	3.1

2.3 Aspect





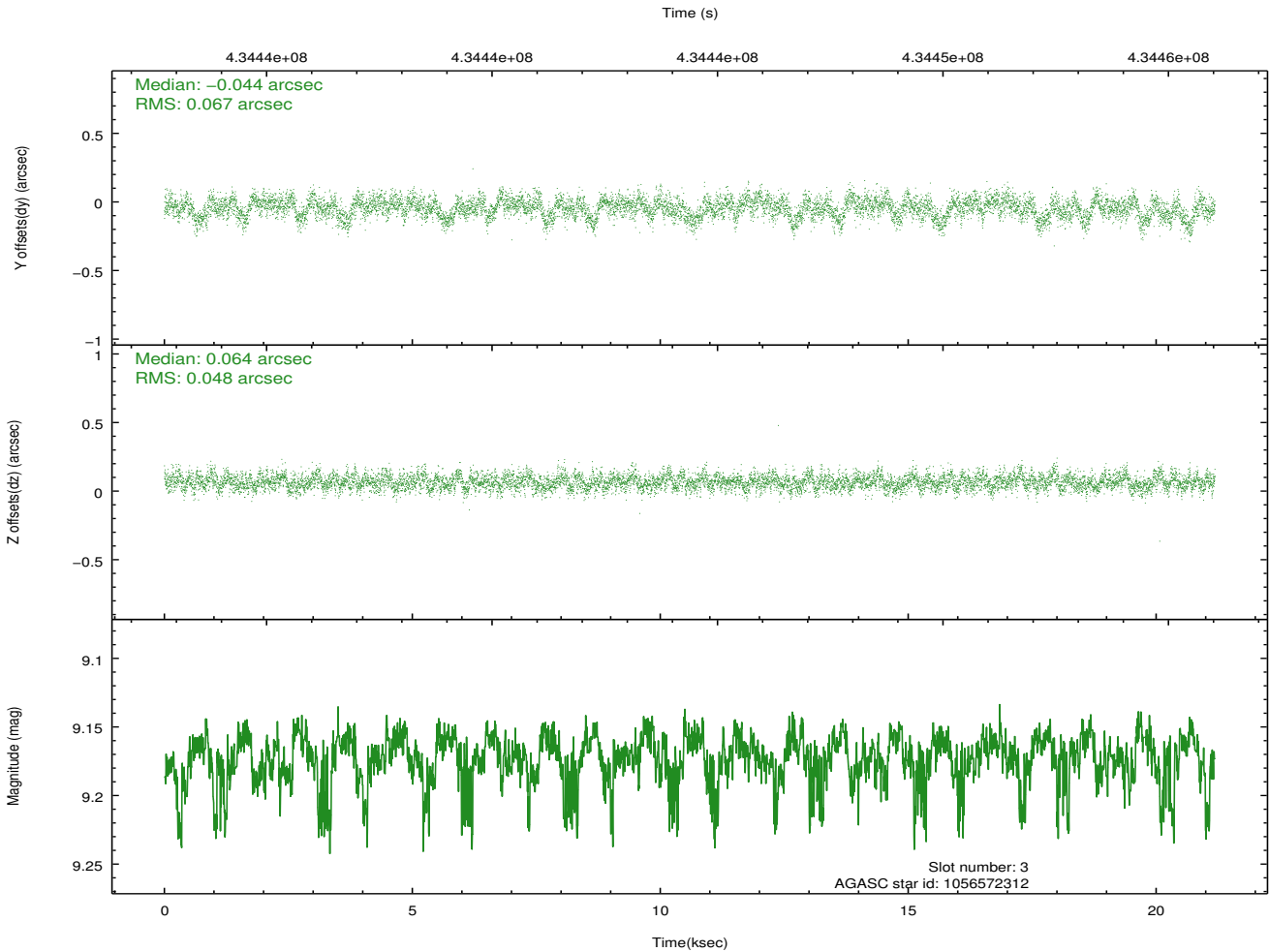
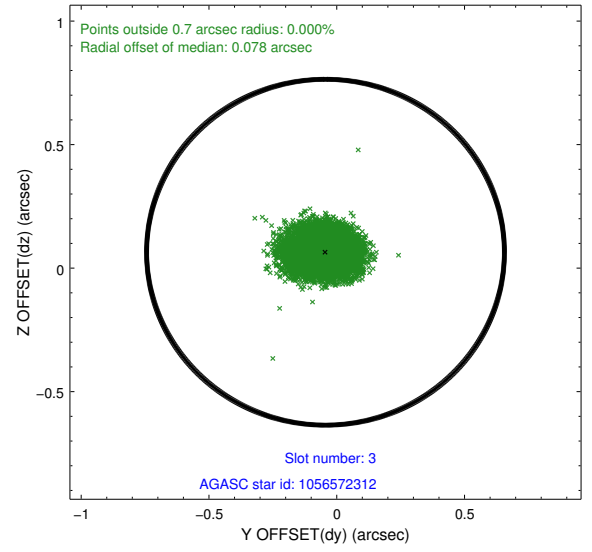
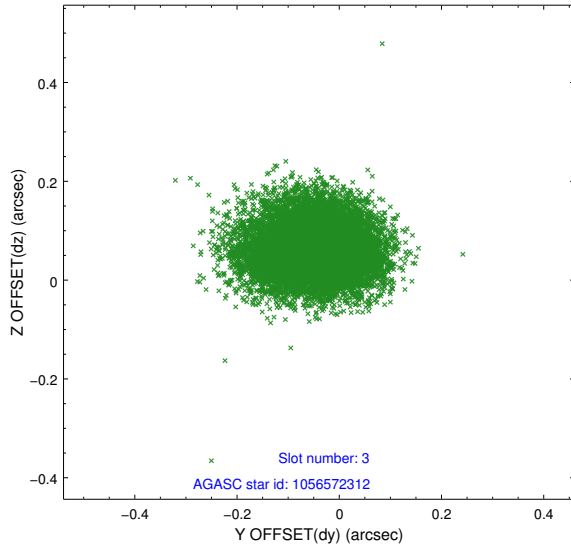
Slot Statistics

slot	status	id	mag	n_pts	med_dy	med_dz	dr1	dr2	ra	dec	mean_y	mean_z
0	FID	ACIS-I-1	7.11	5167	0.130	-0.134	0.009	0.016	0.000000	0.000000	935.45	-993.39
1	FID	ACIS-I-5	7.10	5167	-0.267	0.101	0.009	0.015	0.000000	0.000000	-1812.95	904.24
2	FID	ACIS-I-6	7.12	5167	0.046	0.104	0.009	0.016	0.000000	0.000000	400.74	1548.92
3	GUIDE	1056572312	9.17	10331	-0.044	0.064	0.087	0.143	46.528061	-48.744371	1947.92	1417.52
4	GUIDE	1056574288	8.62	10332	0.064	0.135	0.095	0.149	45.678978	-49.864822	-1795.37	-1077.27
5	GUIDE	1056574816	8.93	10328	-0.111	-0.085	0.119	0.179	46.382284	-48.627820	1859.65	1954.44
6	GUIDE	1056576288	9.12	10326	-0.045	-0.099	0.114	0.182	45.844915	-48.699347	625.33	2371.46
7	GUIDE	1056576656	9.62	10321	0.144	-0.017	0.128	0.204	45.013241	-49.417903	-2356.49	1087.22

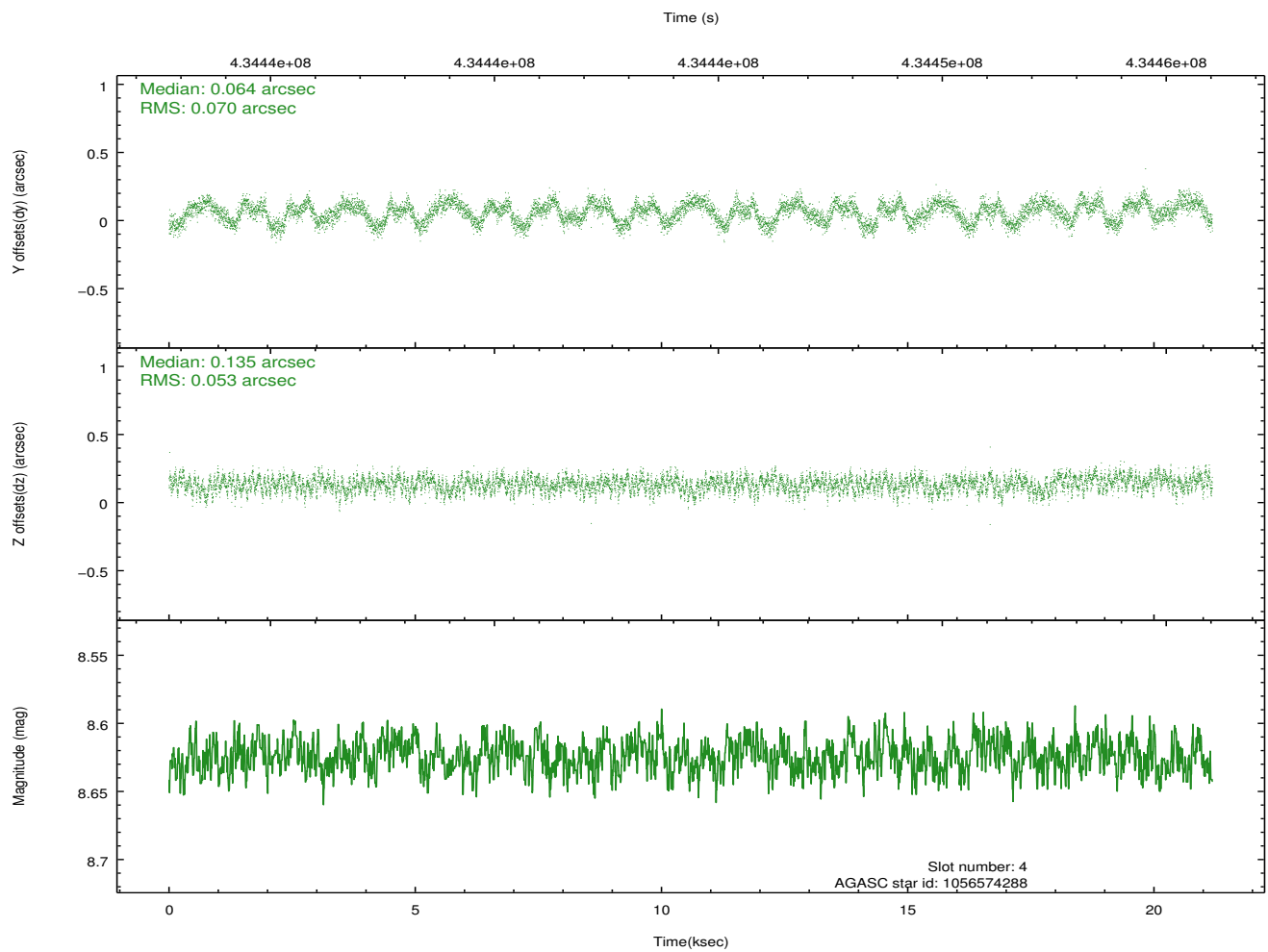
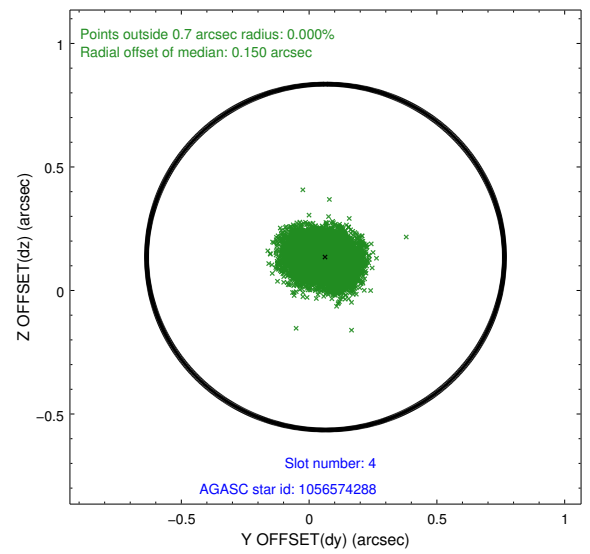
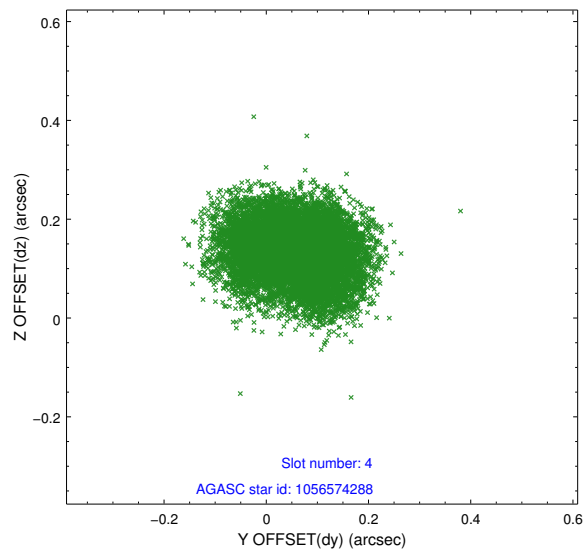
∞

2.4 Star Slots

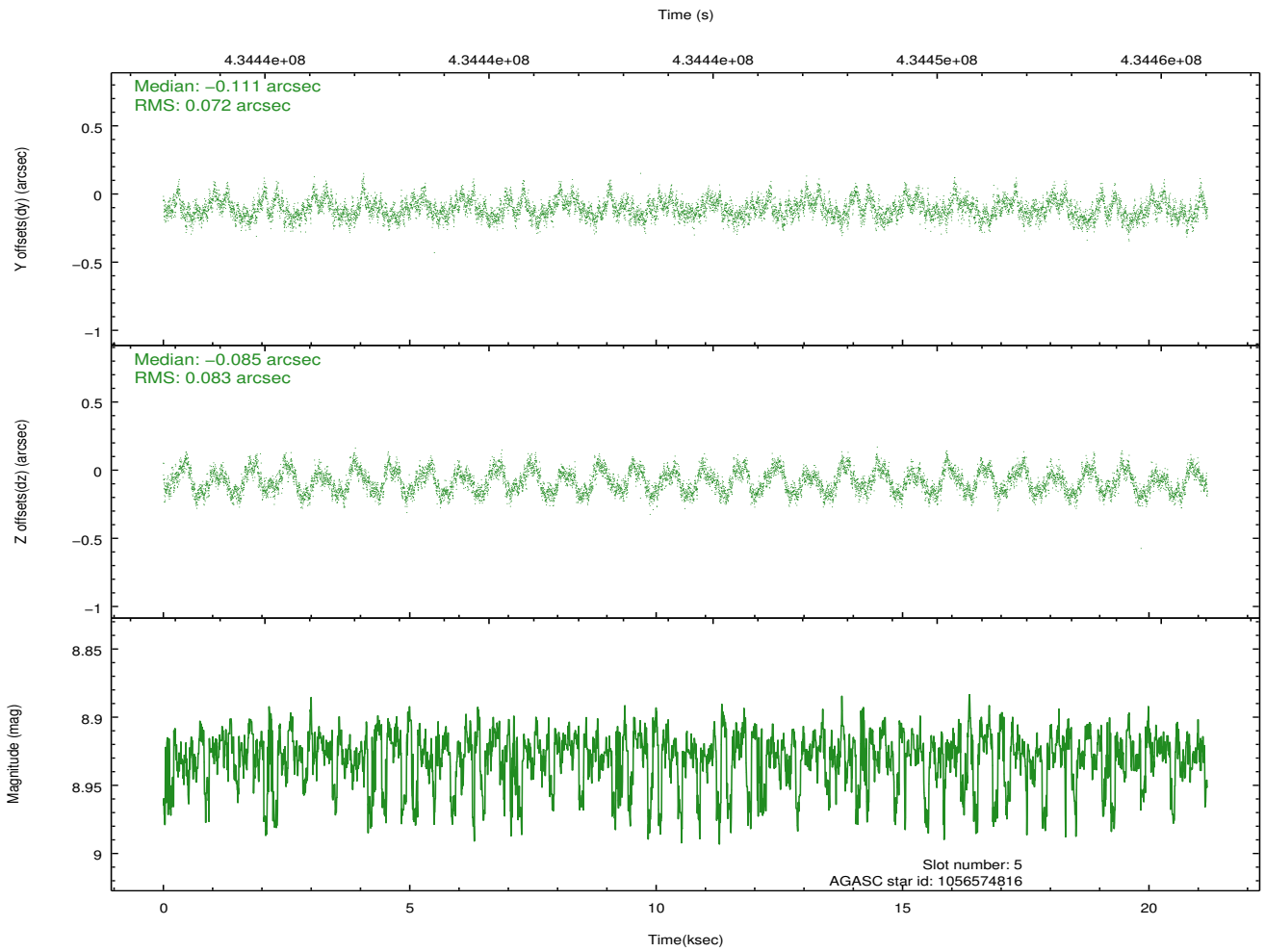
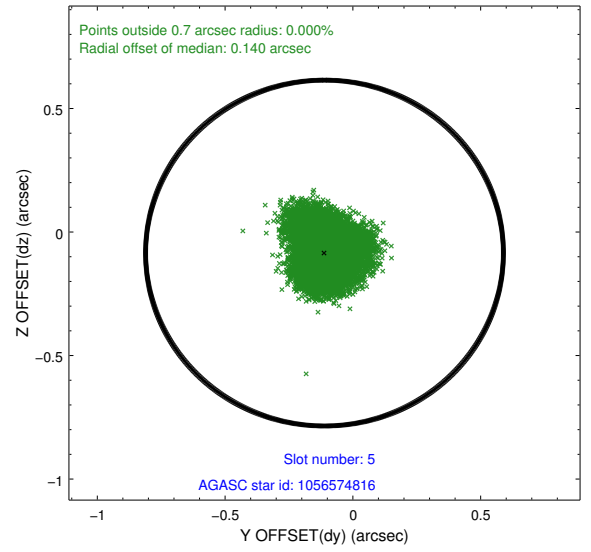
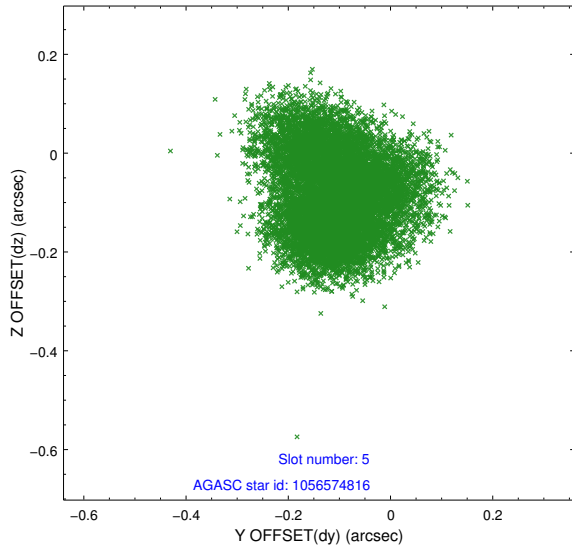
2.4.1 Slot 3



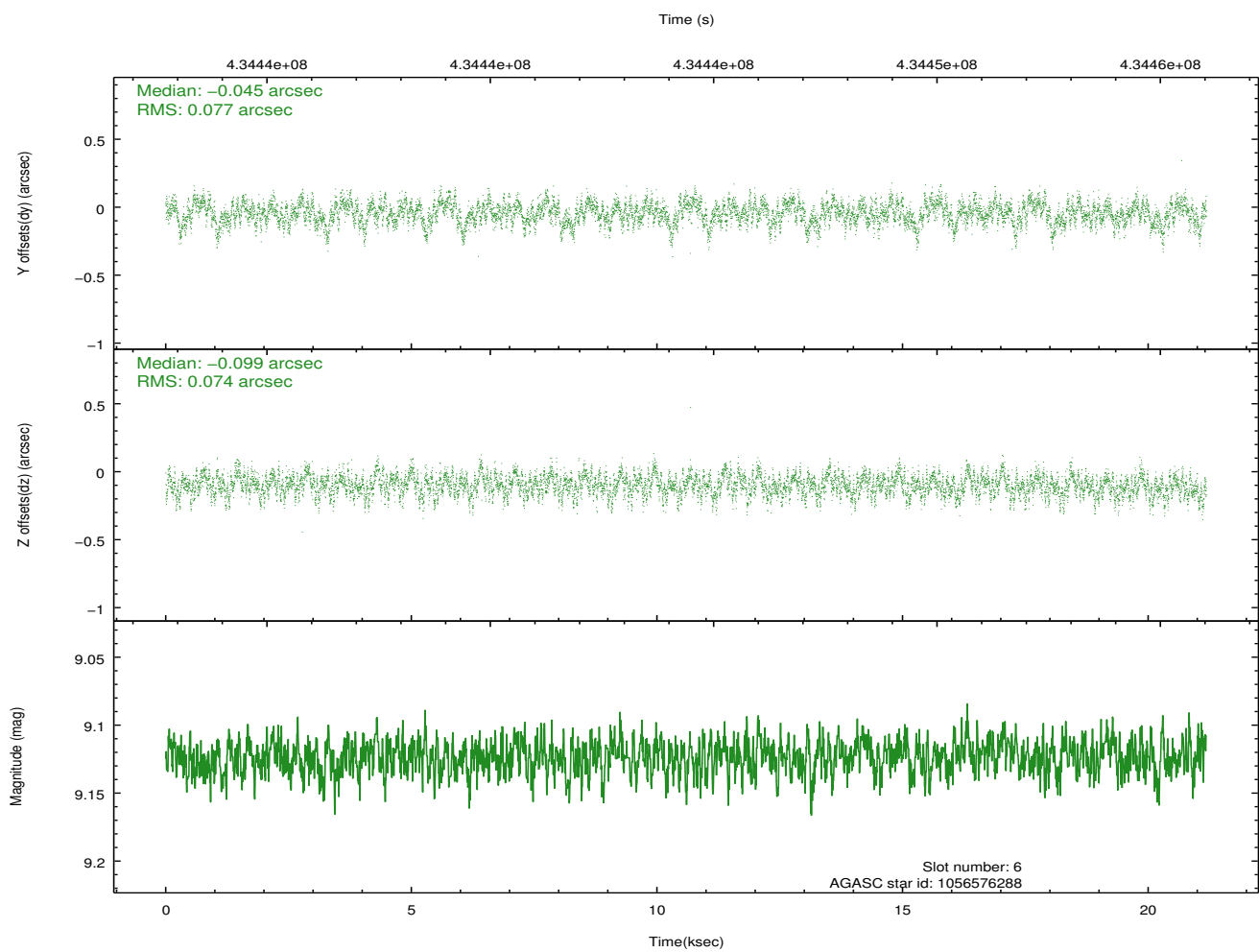
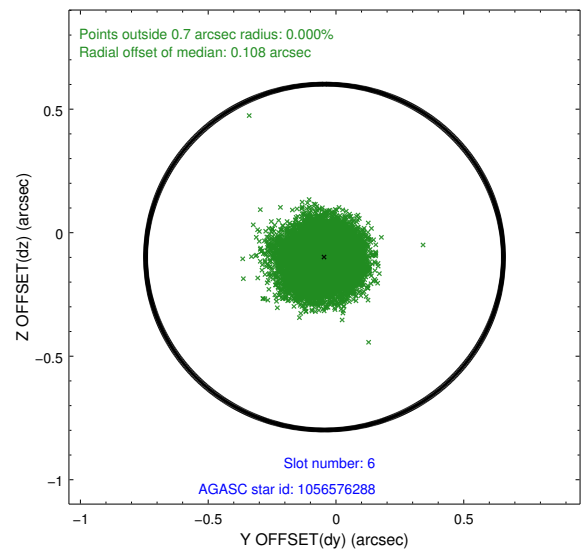
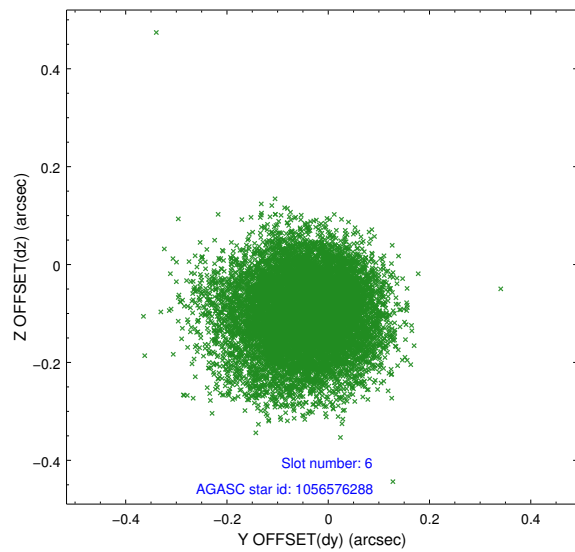
2.4.2 Slot 4



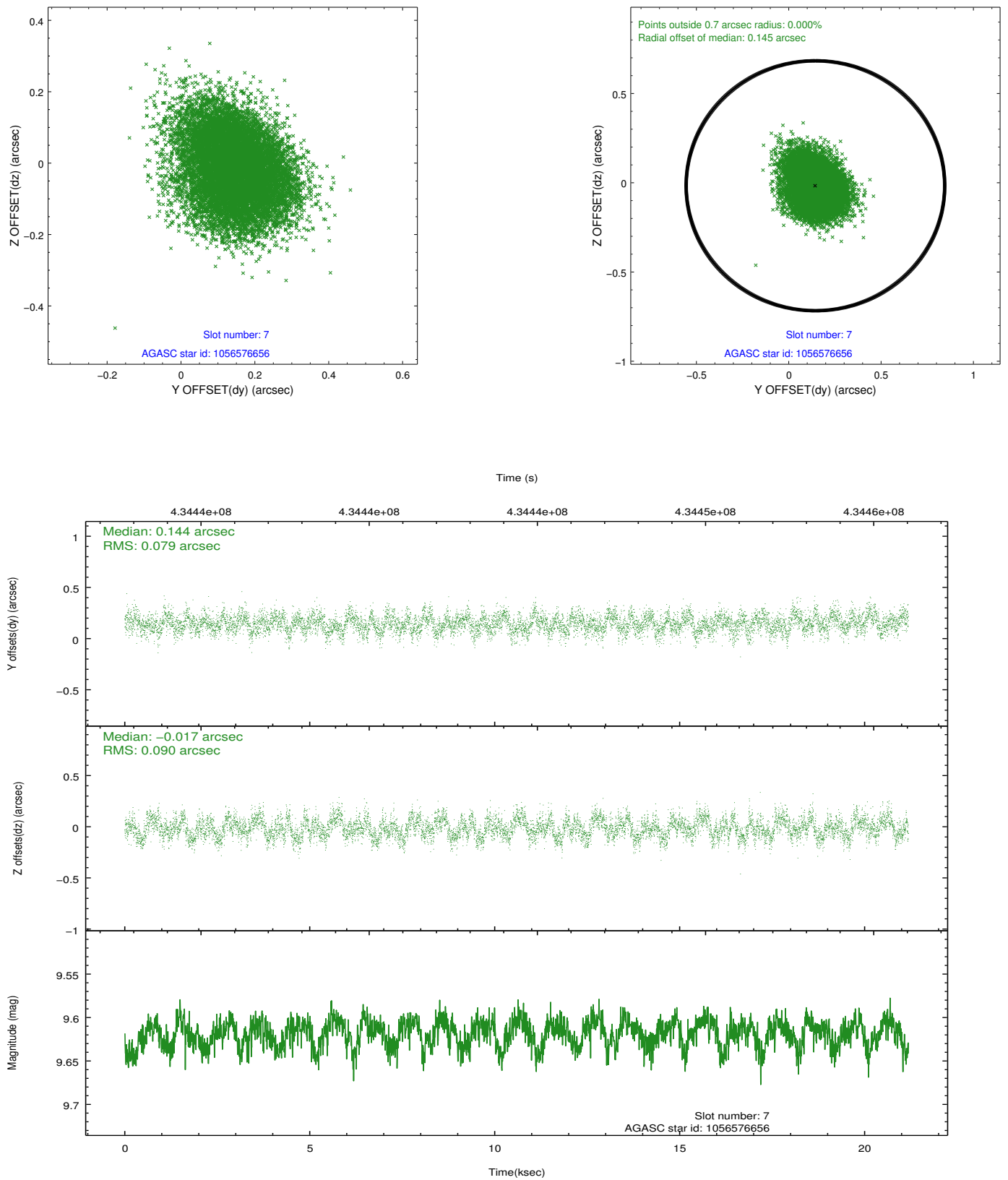
2.4.3 Slot 5



2.4.4 Slot 6

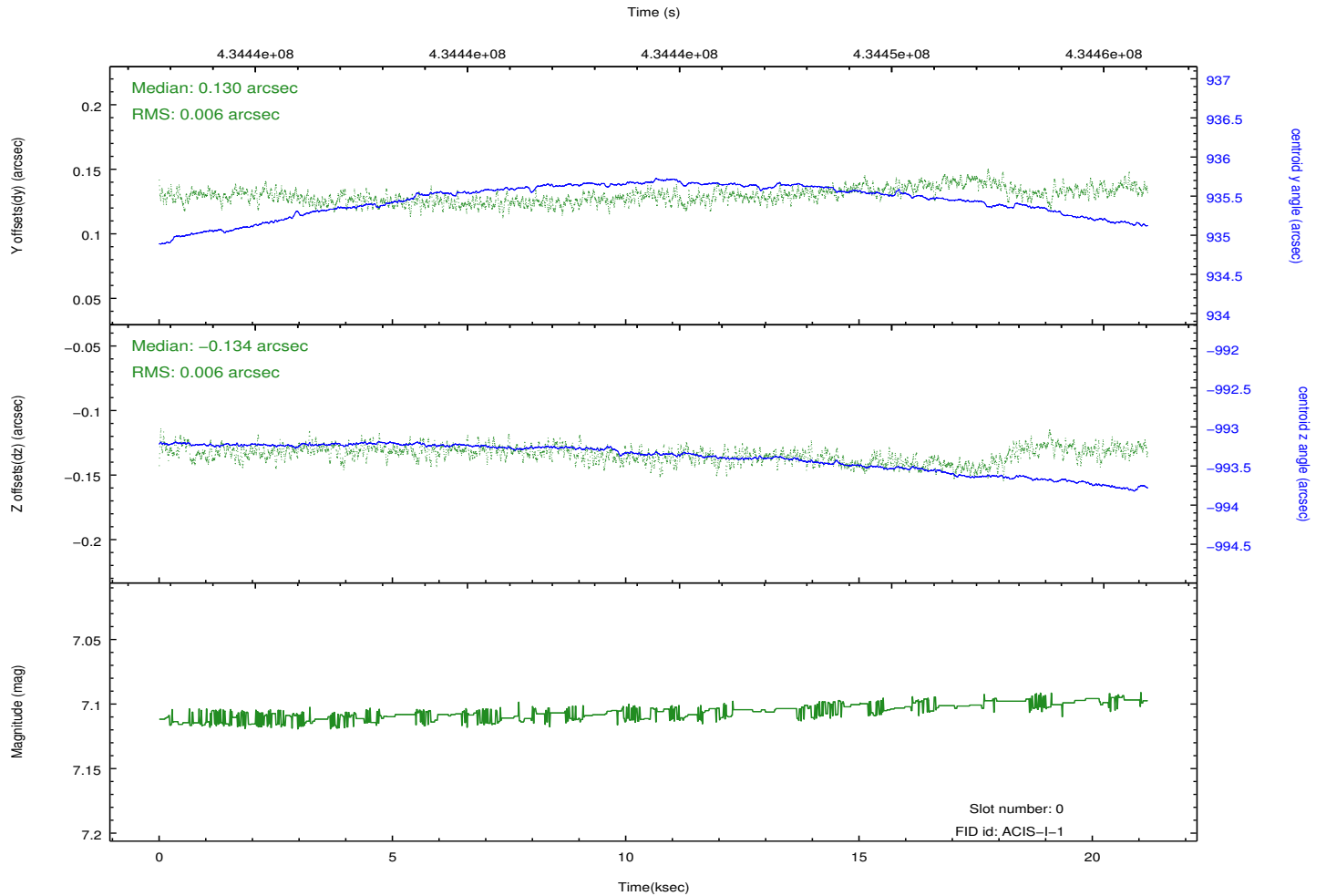
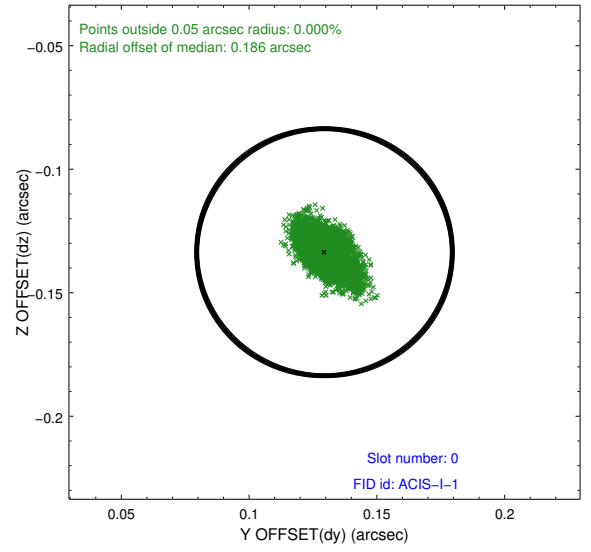
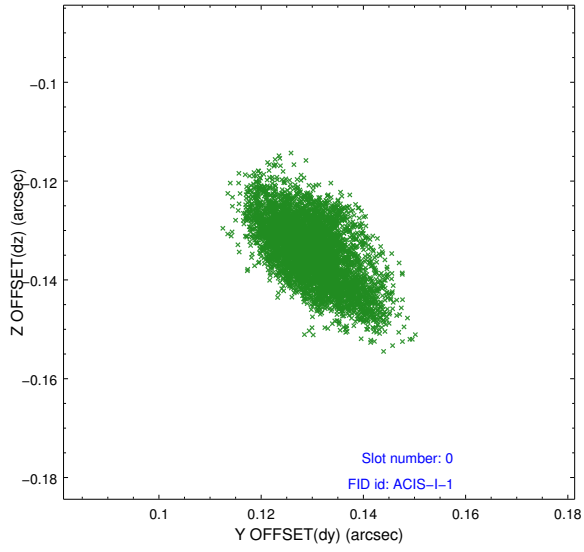


2.4.5 Slot 7

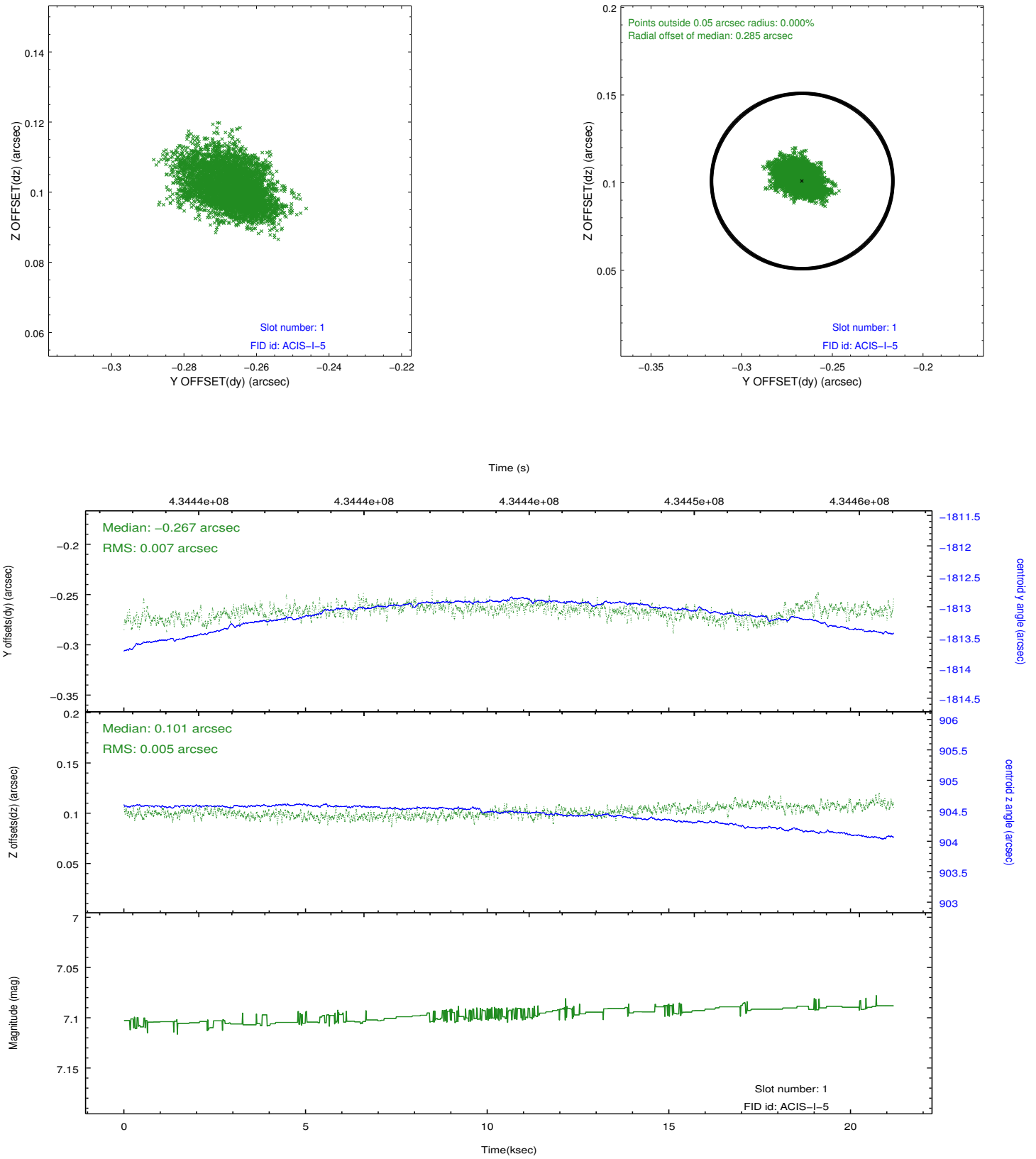


2.5 FID Slots

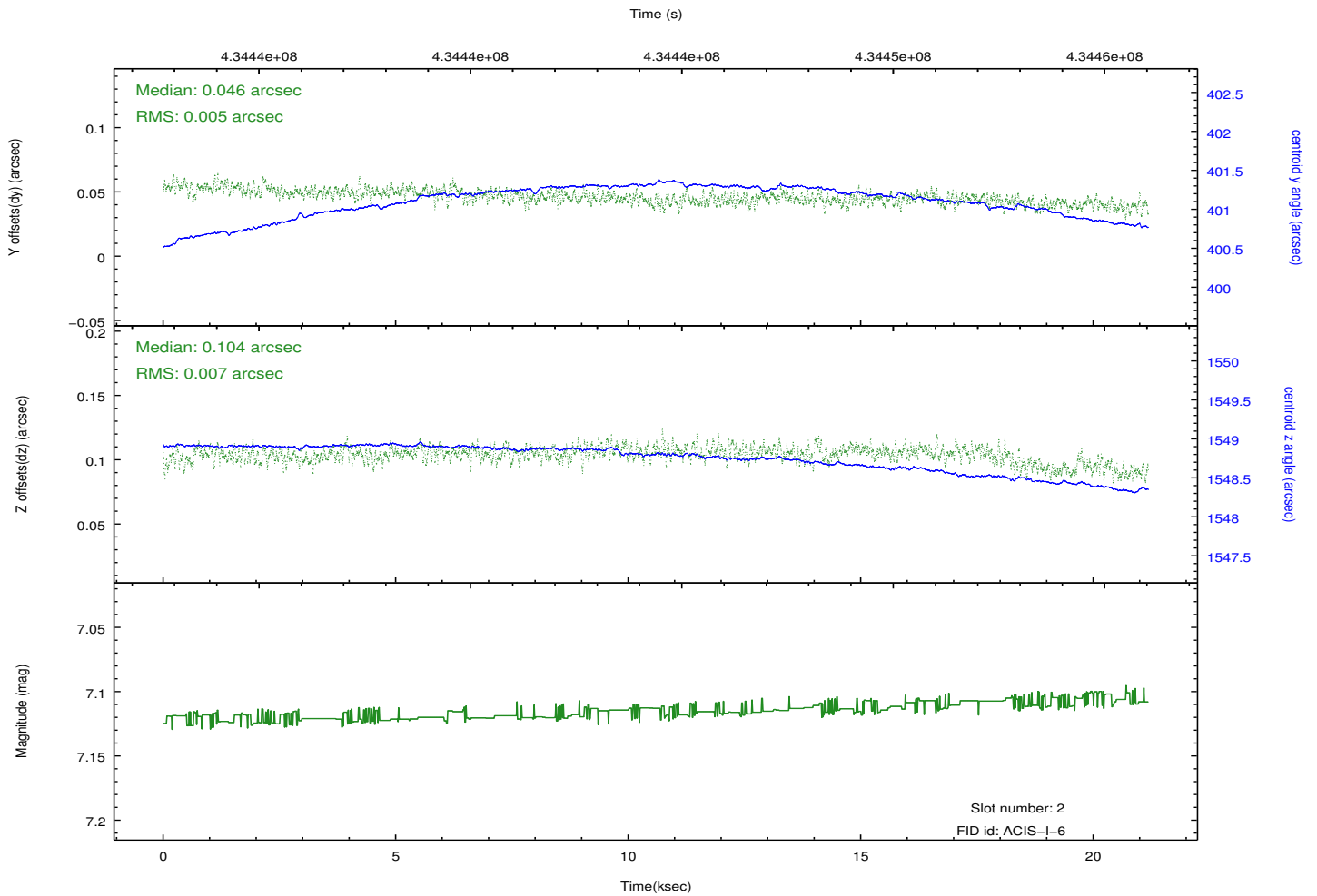
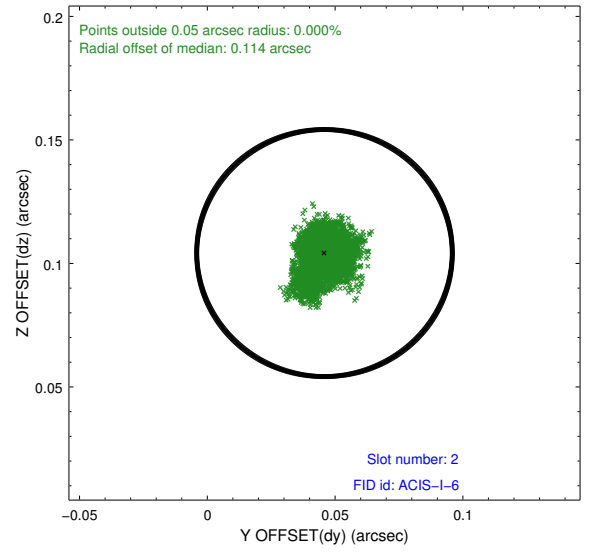
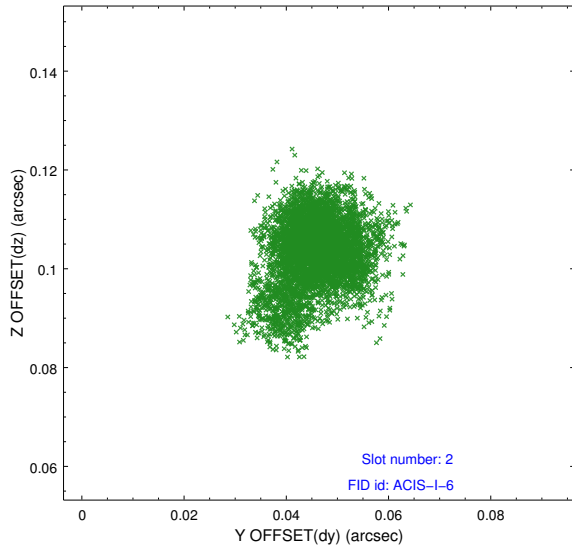
2.5.1 Slot 0



2.5.2 Slot 1



2.5.3 Slot 2



A Summary

A.1 Status

V&V Scientist	Beth Sundheim
V&V Date (YYYY-MM-DD)	2012.02.24
V&V Edition	1
V&V Disposition and Status	OK
V&V Charge Time	21.055159151673

A.2 Comments