

V&V Reference Report

L2 ASCDS Version : 8.4.3

Observation 12525 - L2 Version 3
Chandra X-Ray Center

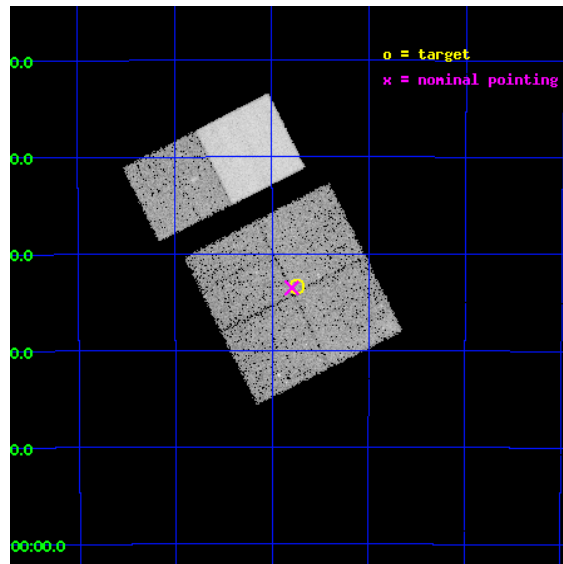
L2 Processing Date : Feb 12 2012

Contents

1	Front	2
2	OBI	3
2.1	OBI	3
2.1.1	Images	3
2.1.2	Bias	3
2.1.3	Parameters	4
2.1.4	Events	4
2.2	Compared Parameters	5
2.3	Aspect	6
2.4	Star Slots	9
2.4.1	Slot 3	9
2.4.2	Slot 4	10
2.4.3	Slot 5	11
2.4.4	Slot 6	12
2.4.5	Slot 7	13
2.5	FID Slots	14
2.5.1	Slot 0	14
2.5.2	Slot 1	15
2.5.3	Slot 2	16
A	Summary	17
A.1	Status	17
A.2	Comments	17

1 Front

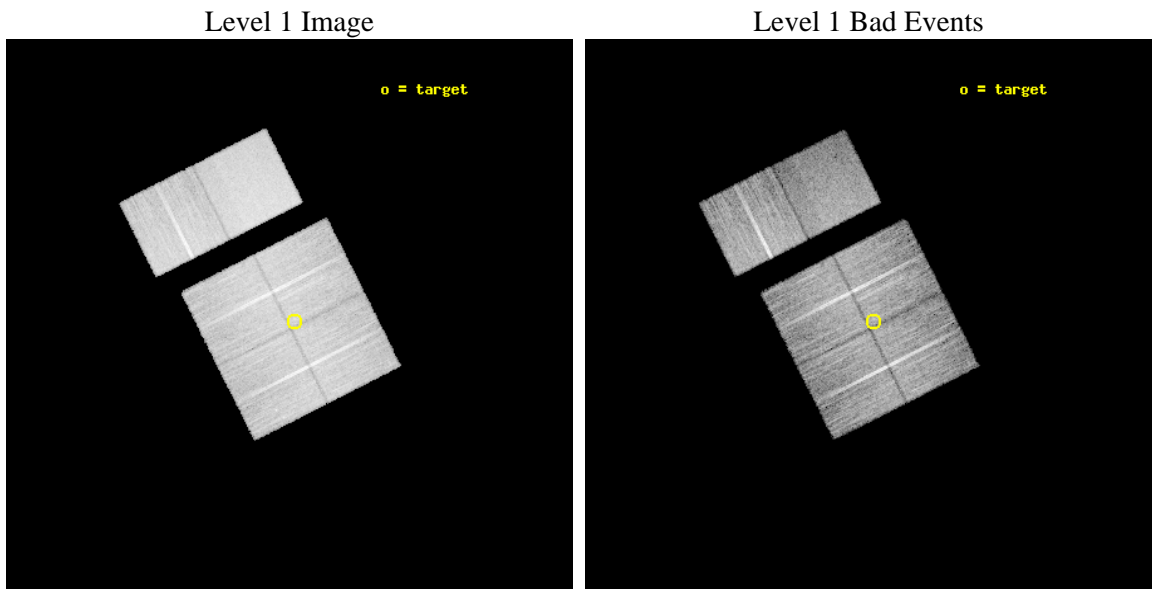
seq_num	401266	Sequence number
obs_id	12525	Observation id
title	Census of the Normal Spiral Arm Region	Proposal title
observer	Dr. John Tomsick	Principal investigator
object	Norma Region	Source name
dtcycle	0	
cycle	P	events from which exps? Prim/Second/Both
ra_targ	249.186624	Observer's specified target RA [deg]
dec_targ	-47.557724	Observer's specified target Dec [deg]
ra_nom	249.19842712992	Nominal RA [deg]
dec_nom	-47.559064379556	Nominal Dec [deg]
roll_nom	333.21739700943	Nominal Roll [deg]
revision	3	Processing version of data
ontime	19756.79992646	Sum of GTIs [s]
livetime	19506.627429674	Livetime [s]
ontime0	19753.558866084	Sum of GTIs [s]
ontime1	19756.79992646	Sum of GTIs [s]
ontime2	19753.558876157	Sum of GTIs [s]
ontime3	19756.79992646	Sum of GTIs [s]
ontime6	19756.79992646	Sum of GTIs [s]
ontime7	19756.79992646	Sum of GTIs [s]
l2events	133198	Number of level 2 events



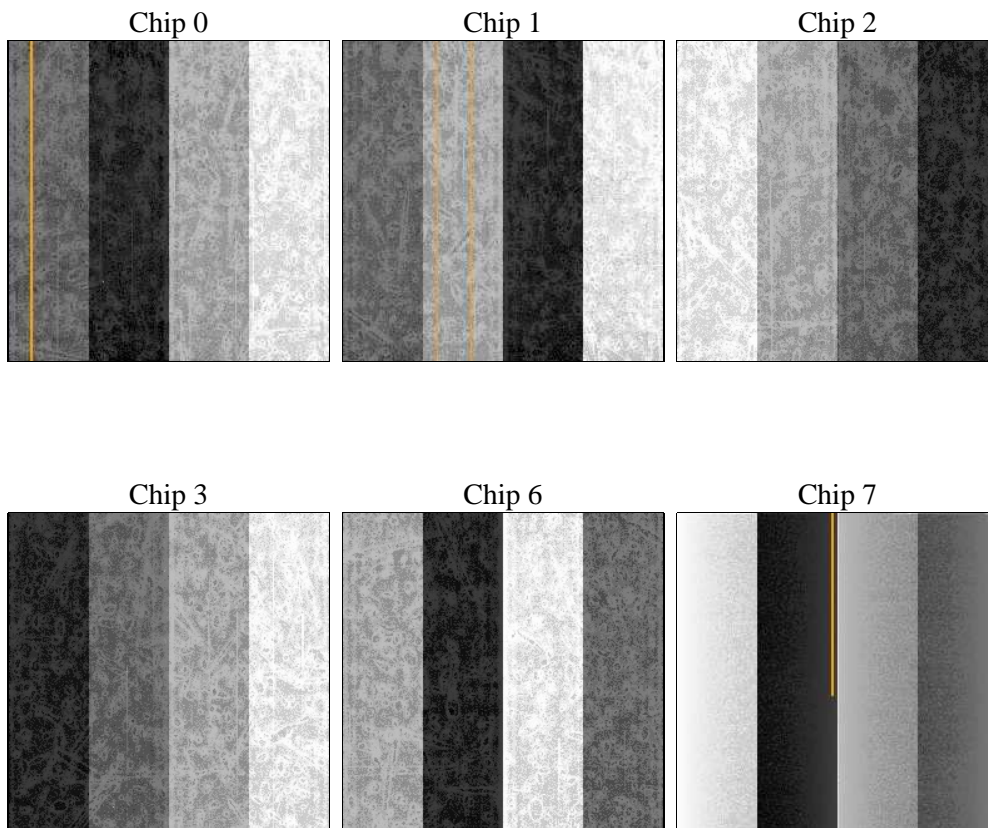
2 OBI

2.1 OBI

2.1.1 Images



2.1.2 Bias



2.1.3 Parameters

obi_num	0	Obi number	sched_exp_time	20000.000000	[s] Scheduled observation exposure time
ascdsver	8.4.3	Processing system revision	ontime	19756.79992646	Sum of GTIs [s]
caldsver	4.4.7	 	ontime0	19753.558866084	Sum of GTIs [s]
date	2012-02-12T11:09:23	Date and time of file creation	ontime1	19756.79992646	Sum of GTIs [s]
revision	3	Processing version of data	ontime2	19753.558876157	Sum of GTIs [s]
			ontime3	19756.79992646	Sum of GTIs [s]
			ontime6	19756.79992646	Sum of GTIs [s]
			ontime7	19756.79992646	Sum of GTIs [s]
			l1events	769543	Number of level 1 events

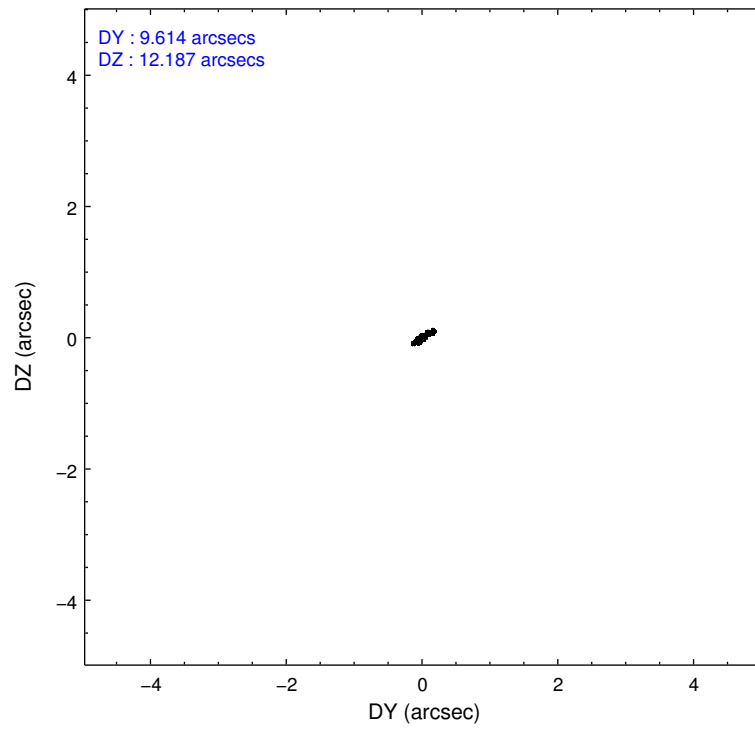
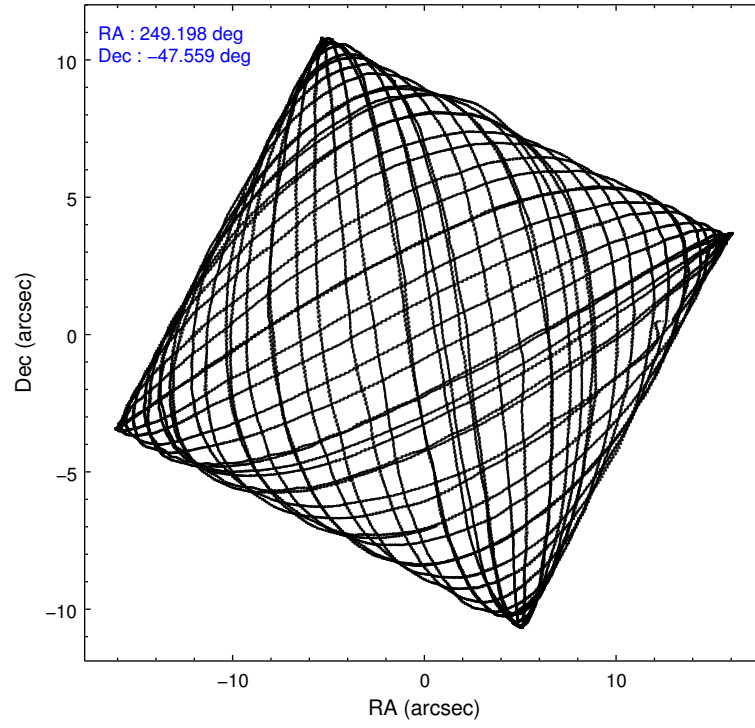
2.1.4 Events

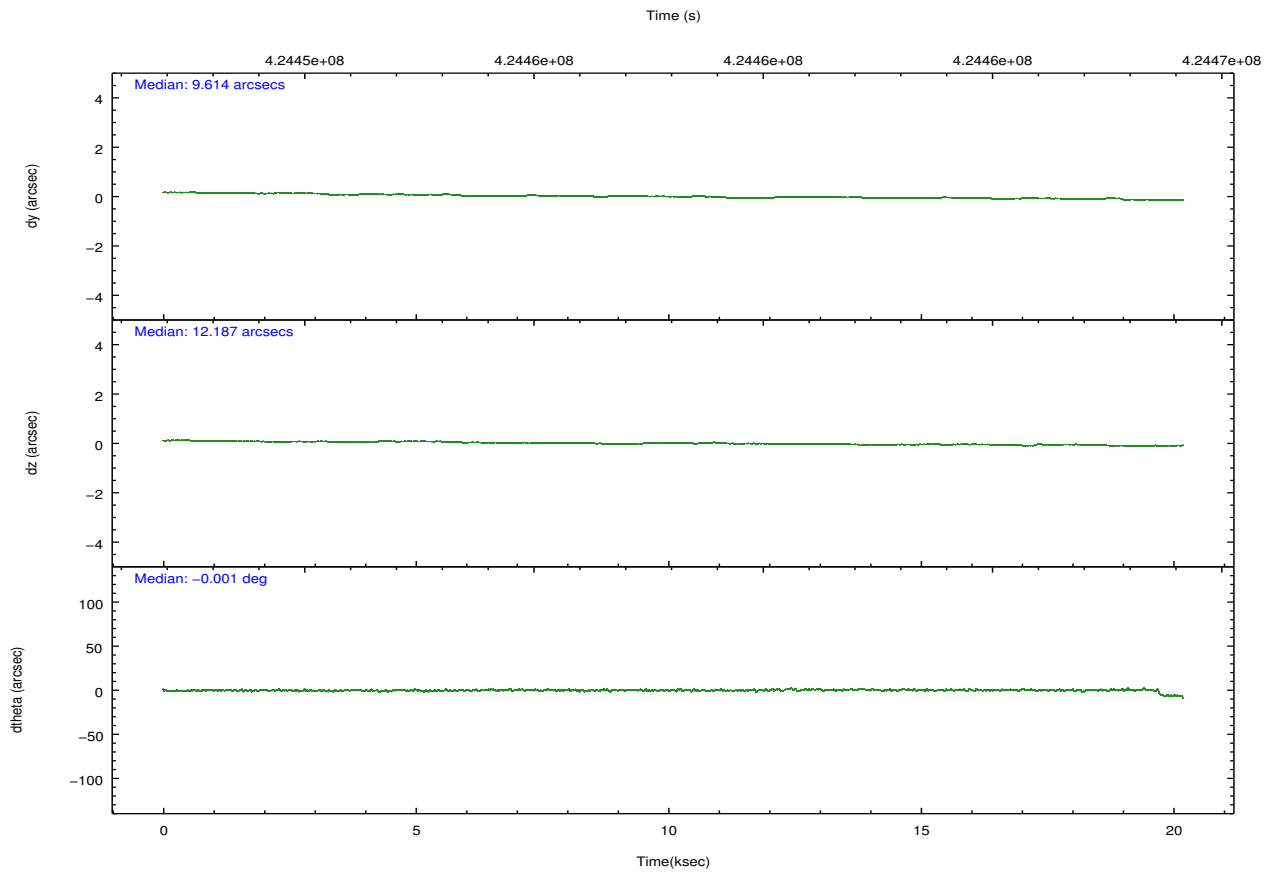
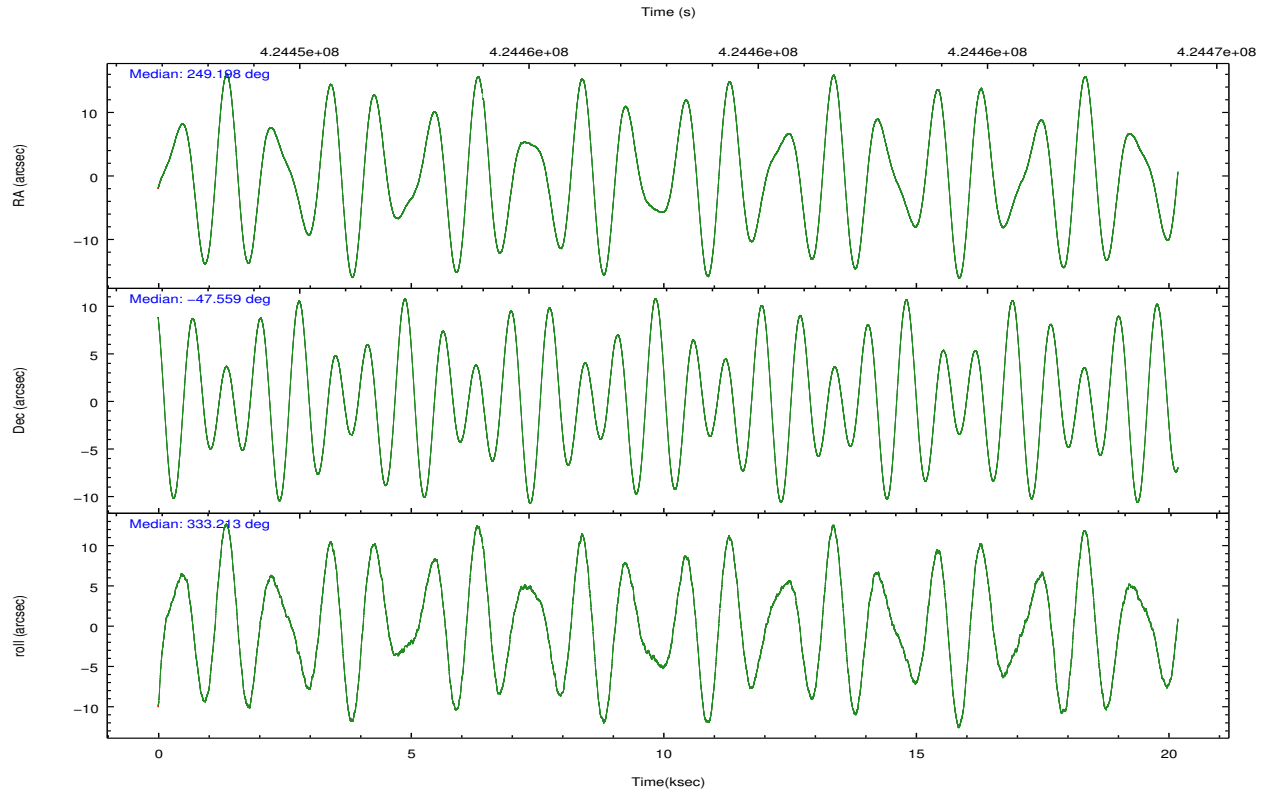
	ccd 0	ccd 1	ccd 2	ccd 3	ccd 6	ccd 7		ccd 0	ccd 1	ccd 2	ccd 3	ccd 6	ccd 7
level 1 events	115683	116683	124202	122464	132286	158225	grade 0 events	5607	6515	5646	5577	5535	6352
rejected events	100791	99993	109830	108082	116944	87845		4%	5%	4%	4%	4%	4%
rejected %	87%	85%	88%	88%	88%	55%	grade 1 events	62	84	68	98	60	181
								0%	0%	0%	0%	0%	0%
							grade 2 events	3393	3544	3244	3010	3417	14393
								2%	3%	2%	2%	2%	9%
							grade 3 events	1539	1555	1467	1480	1508	6238
								1%	1%	1%	1%	1%	3%
							grade 4 events	1420	1589	1369	1470	1499	5927
								1%	1%	1%	1%	1%	3%
							grade 5 events	5179	5411	4867	5884	5930	16013
								4%	4%	3%	4%	4%	10%
							grade 6 events	2941	3497	2651	2850	3387	37491
								2%	2%	2%	2%	2%	23%
							grade 7 events	95542	94488	104890	102095	110950	71630
								82%	80%	84%	83%	83%	45%

2.2 Compared Parameters

Parameter	Planned	Actual	Parameter	Planned	Actual
Instrument	ACIS	ACIS	Obspar format version number	7	7
Detector	ACIS-012367	ACIS-012367	Obspar file type	PREDICTED	ACTUAL
Grating	NONE	NONE	Obspar update status	NONE	UPDATED
Data mode	VFAINT	VFAINT	CCD I0 on	Y	Y
Observation mode	POINTING	POINTING	CCD I1 on	Y	Y
[deg] Pointing RA	249.157753	249.1984271299236	CCD I2 on	Y	Y
[deg] Pointing Dec	-47.560701	-47.5590643795564	CCD I3 on	Y	Y
[deg] Pointing Roll	332.978687	333.2173970094331	CCD S0 on	N	N
[mm] SIM focus pos	-0.782348	-0.7809083437167272	CCD S1 on	N	N
[mm] SIM defocus	0	0.001439871863259334	CCD S2 on	O2	Y
[mm] SIM translation stage pos	-233.592463	-233.5899487761303	CCD S3 on	O1	Y
[mm] SIM translation stage offset	0	-0.002504226799430853	CCD S4 on	N	N
[s] Observation start time (MET)	424448115.184000	424447738.64716	CCD S5 on	N	N
Observation start date	2011-06-14T14:14:09	2011-06-14T14:08:58	Number of optional ACIS chips dropped	0	0
[s] Observation end time (MET)	424468115.184000	424468248.38573	On-chip summing requested	N	N
Observation end date	2011-06-14T19:47:29	2011-06-14T19:50:48	Subarray requested	NONE	NONE
Read mode	TIMED	TIMED	Alternating exposures requested	N	N
			[s] Primary exposure time	0.000000	3.2

2.3 Aspect



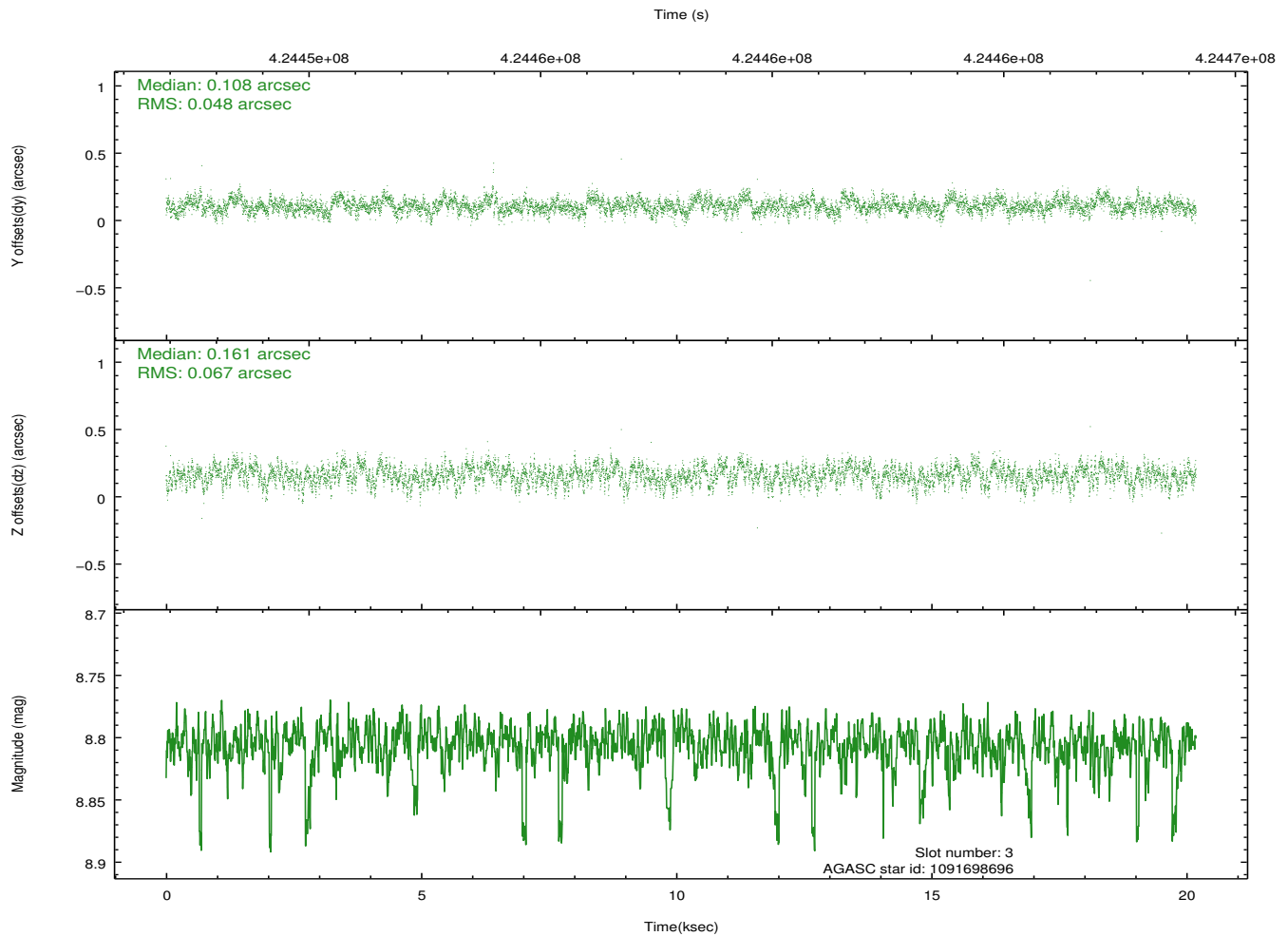
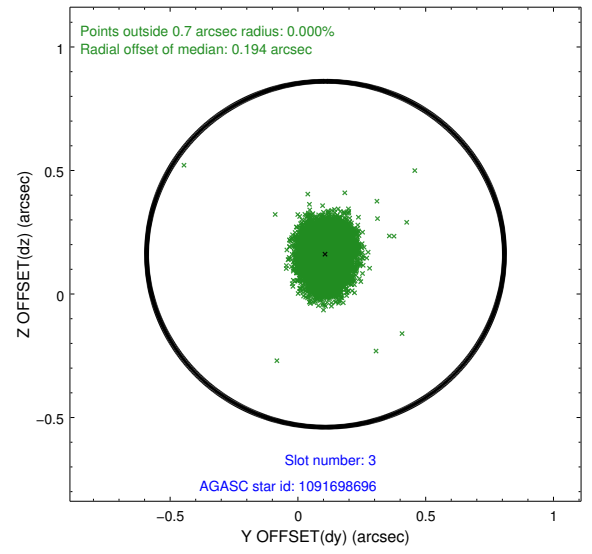
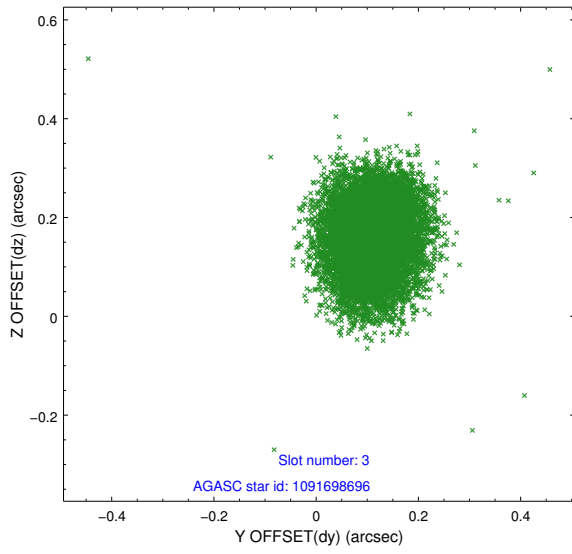


Slot Statistics

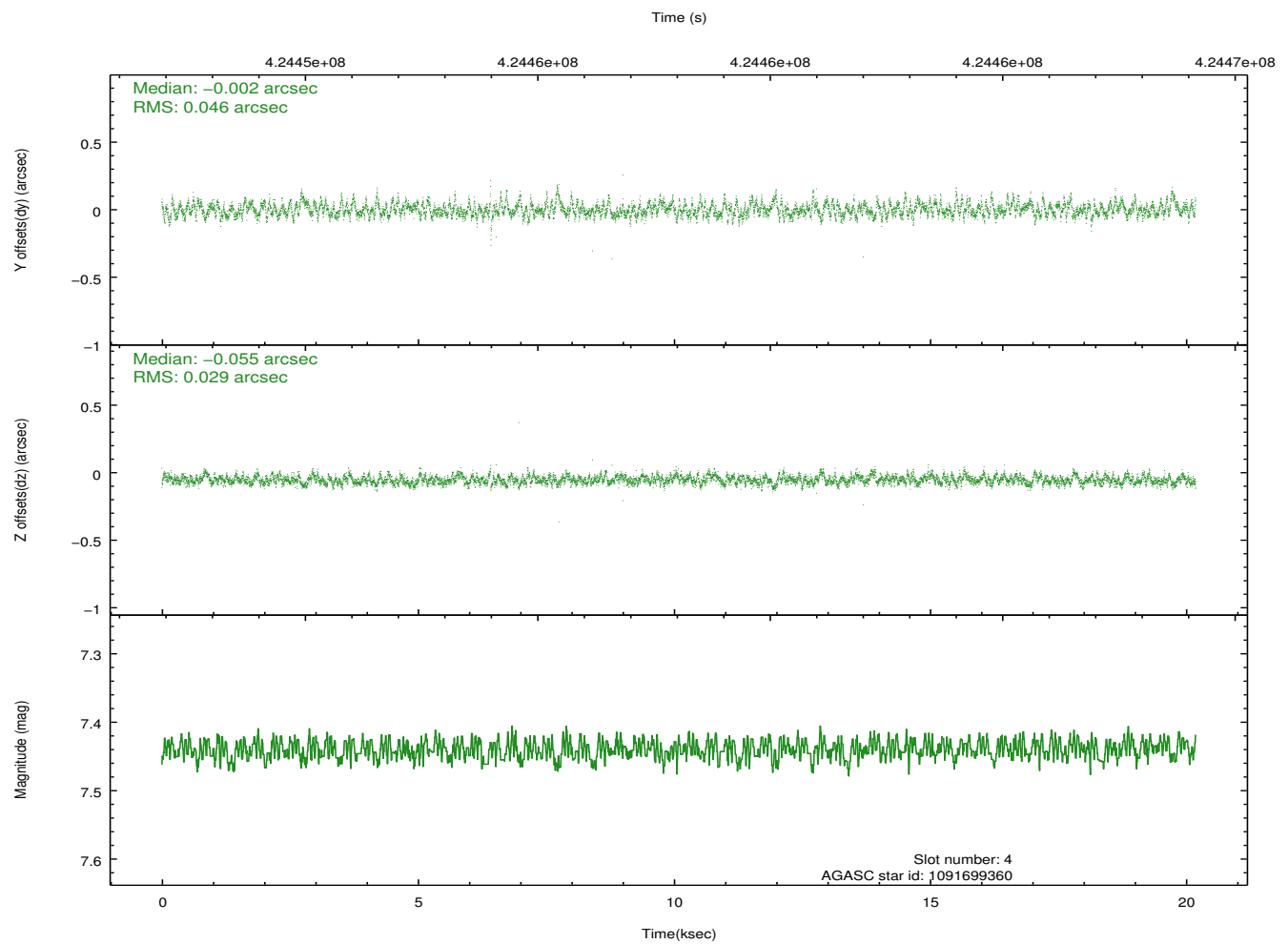
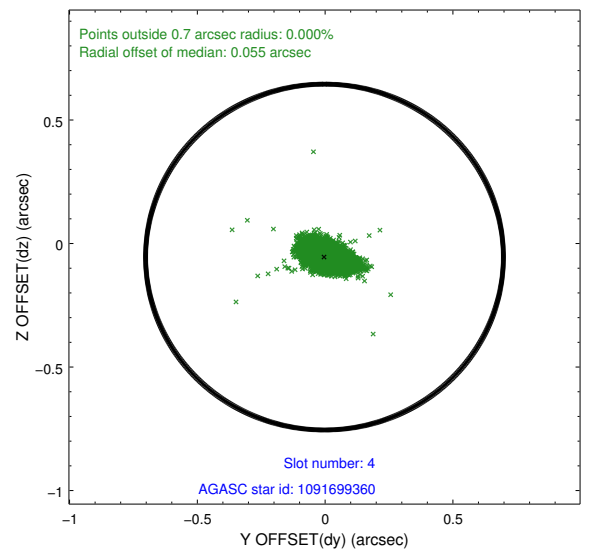
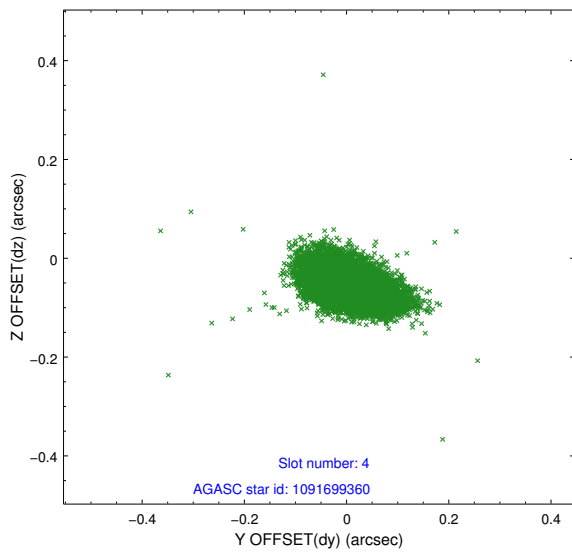
slot	status	id	mag	n_pts	med_dy	med_dz	dr1	dr2	ra	dec	mean_y	mean_z
0	FID	ACIS-I-1	7.17	4925	-0.048	-0.017	0.007	0.013	0.000000	0.000000	929.93	-835.69
1	FID	ACIS-I-4	7.08	4925	0.078	0.018	0.008	0.014	0.000000	0.000000	2150.23	1064.04
2	FID	ACIS-I-6	7.16	4925	-0.127	0.064	0.008	0.015	0.000000	0.000000	396.03	1706.50
3	GUIDE	1091698696	8.81	9826	0.108	0.161	0.088	0.141	248.529134	-48.079711	-494.64	-2356.78
4	GUIDE	1091699360	7.44	9847	-0.002	-0.055	0.055	0.097	248.660725	-47.004364	-1995.04	1226.19
5	GUIDE	1091702440	8.73	9844	0.093	0.100	0.073	0.120	248.295809	-47.683380	-1654.80	-1352.77
6	GUIDE	1091705016	7.81	9847	-0.171	-0.271	0.062	0.100	249.888030	-47.558250	1580.13	806.42
7	GUIDE	1091709768	7.71	9848	-0.032	0.063	0.047	0.074	249.435228	-47.706899	839.09	-164.32

2.4 Star Slots

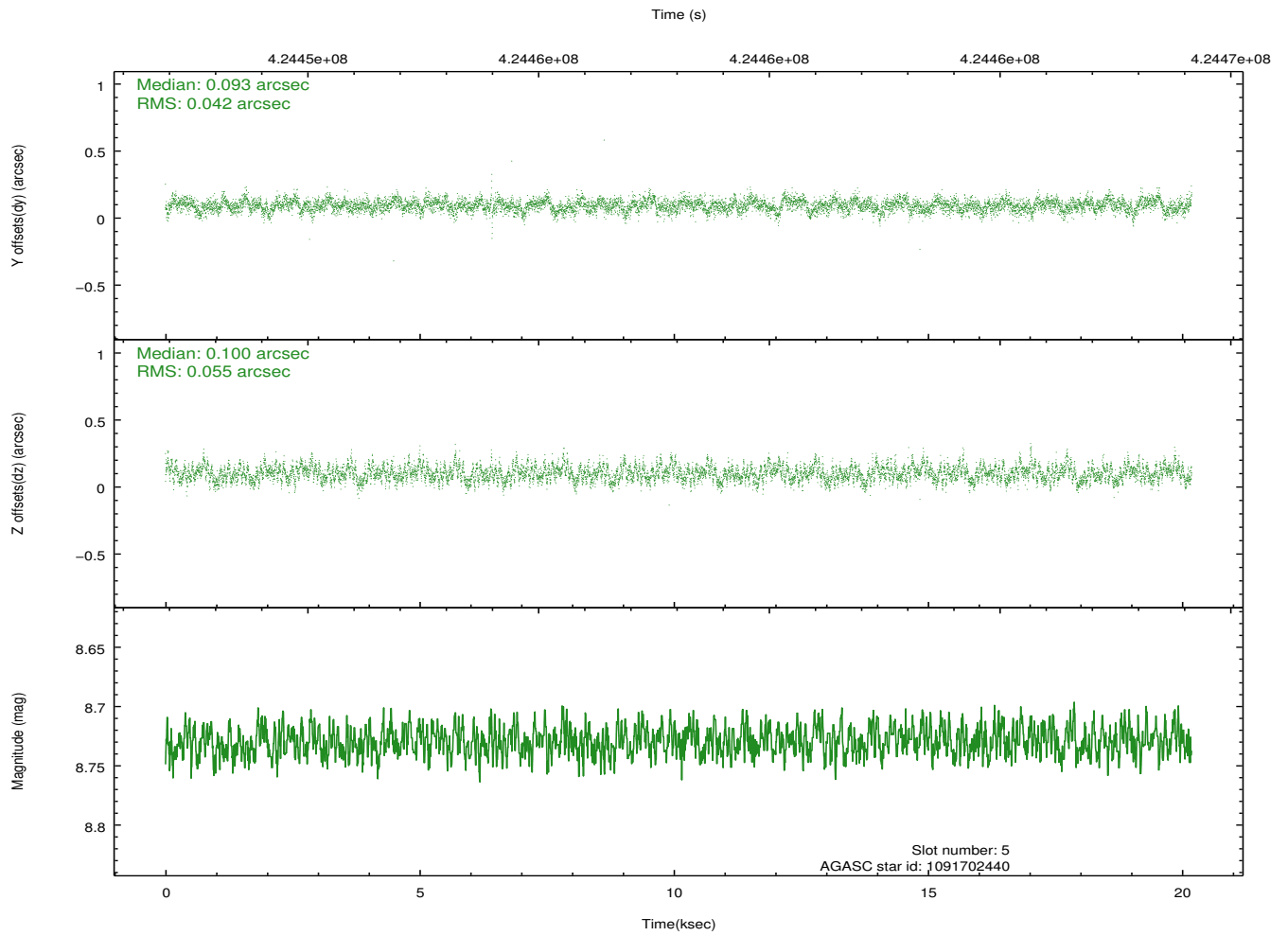
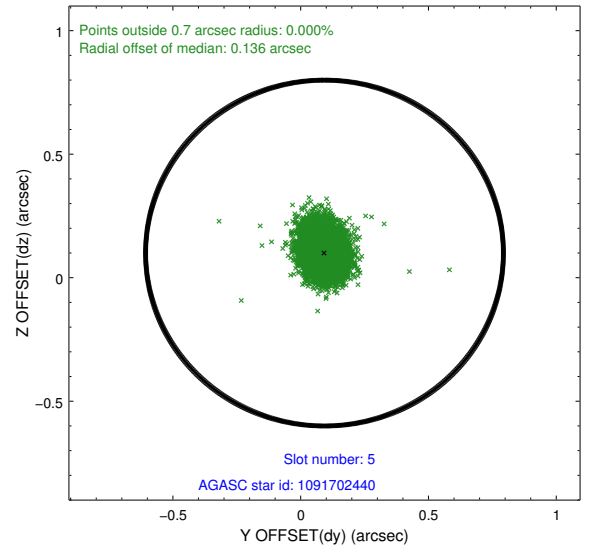
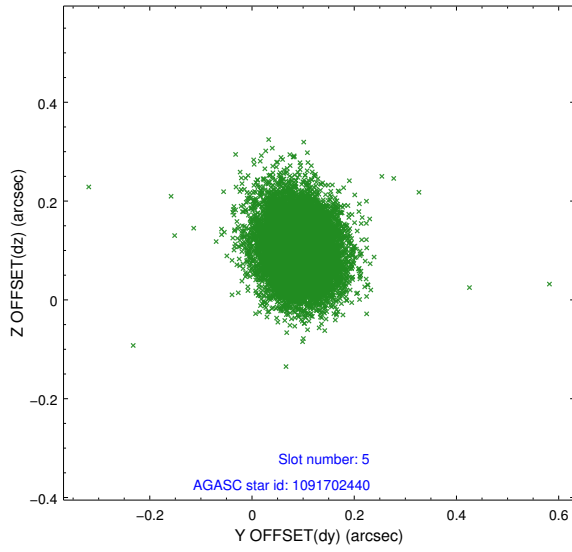
2.4.1 Slot 3



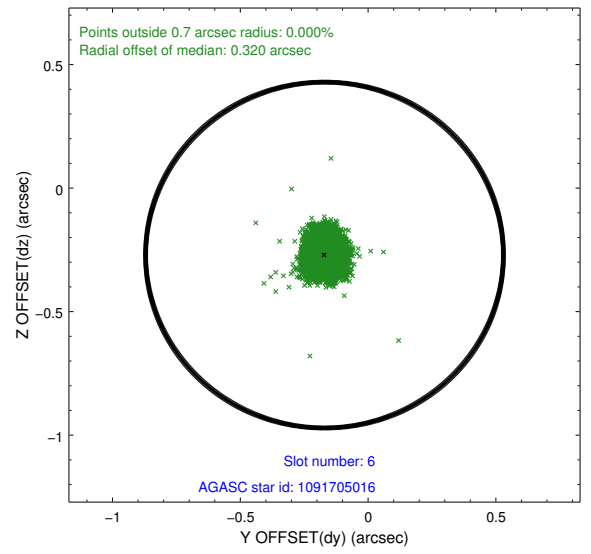
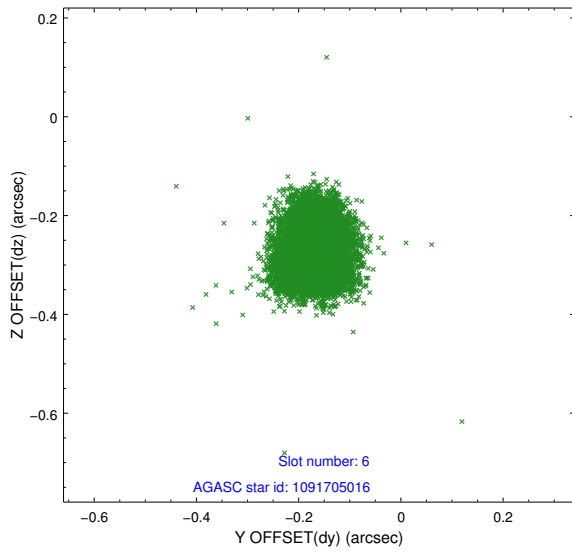
2.4.2 Slot 4



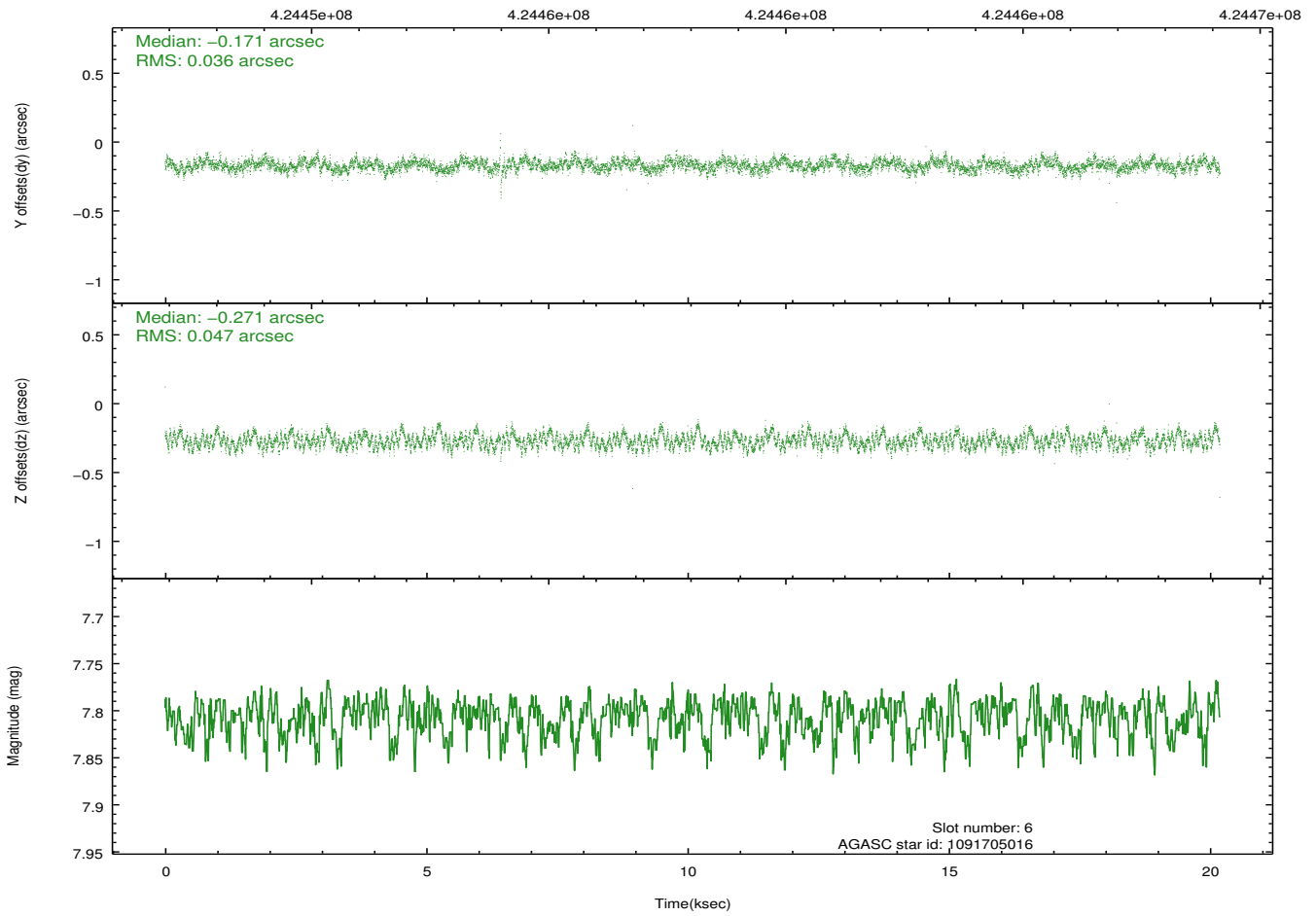
2.4.3 Slot 5



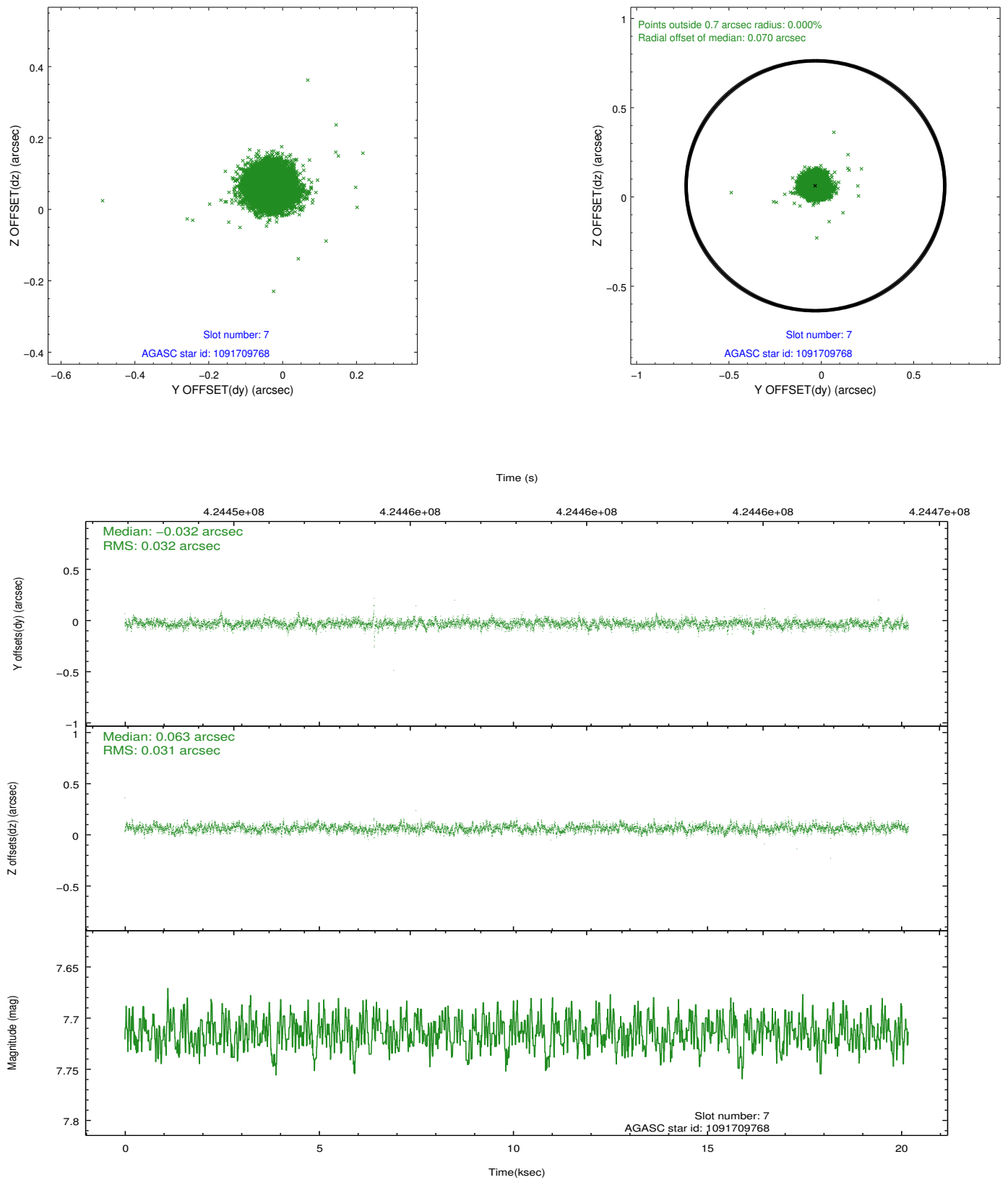
2.4.4 Slot 6



Time (s)

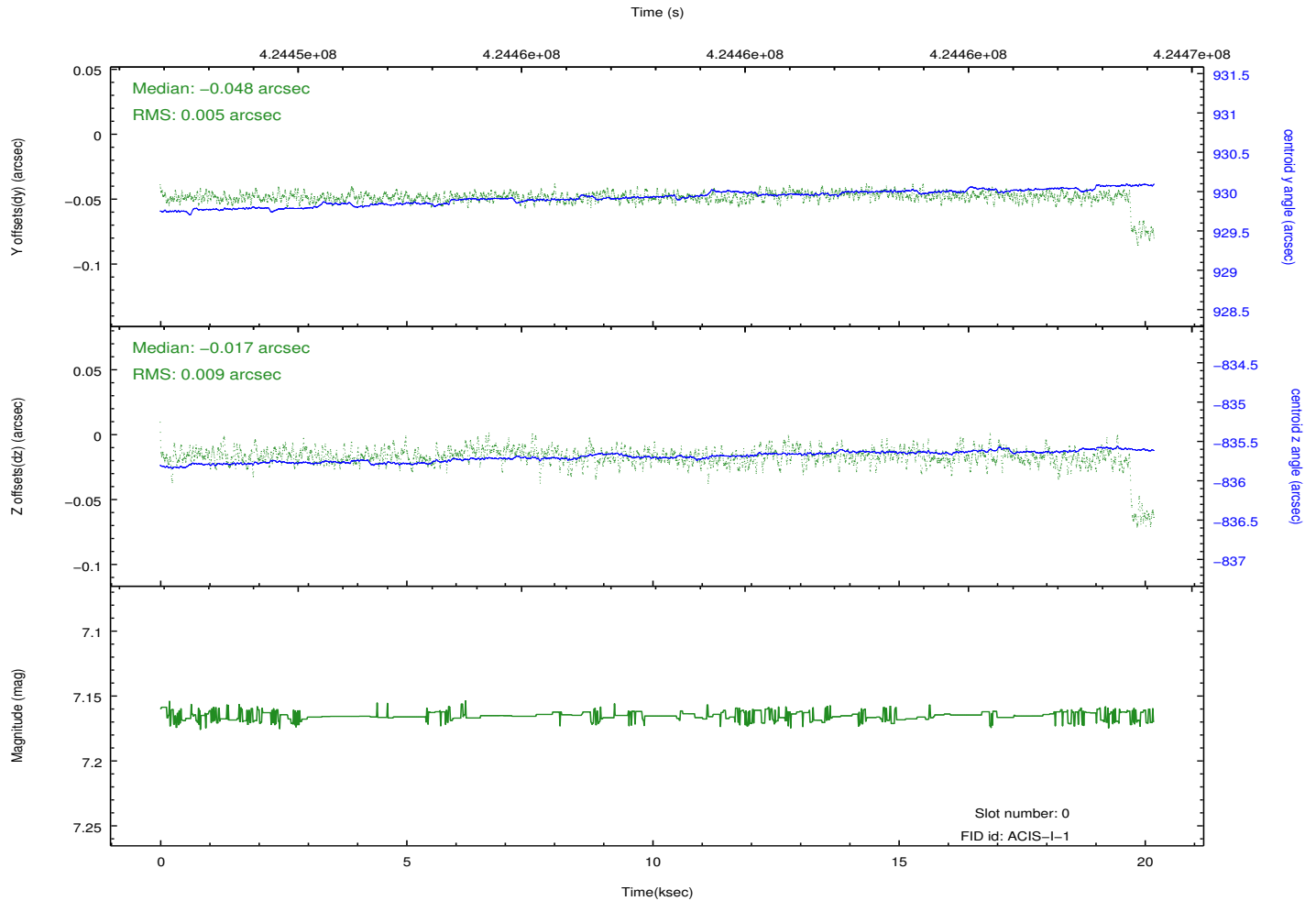
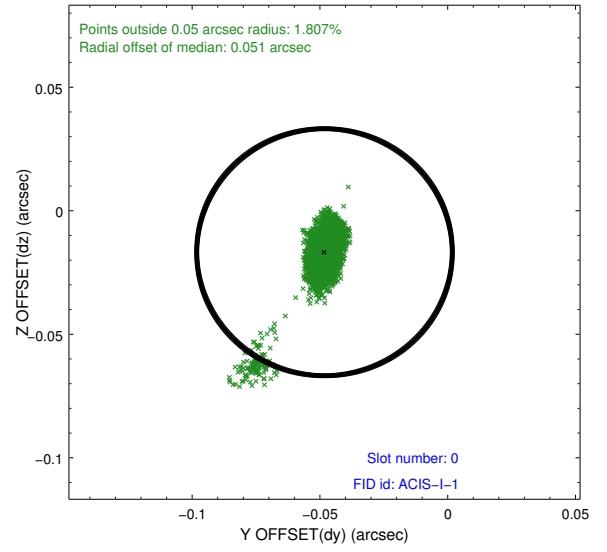
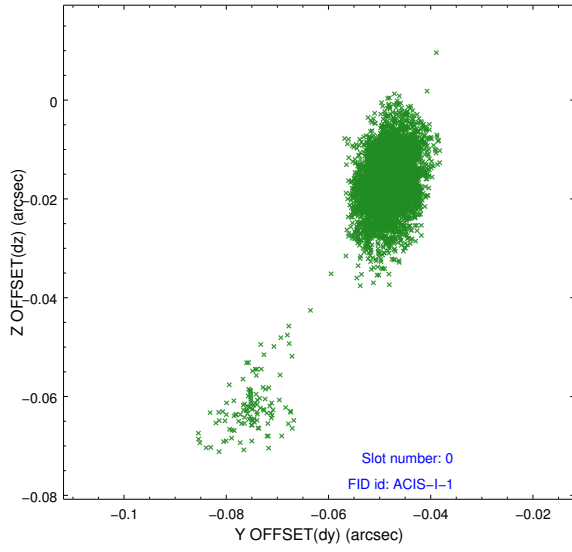


2.4.5 Slot 7

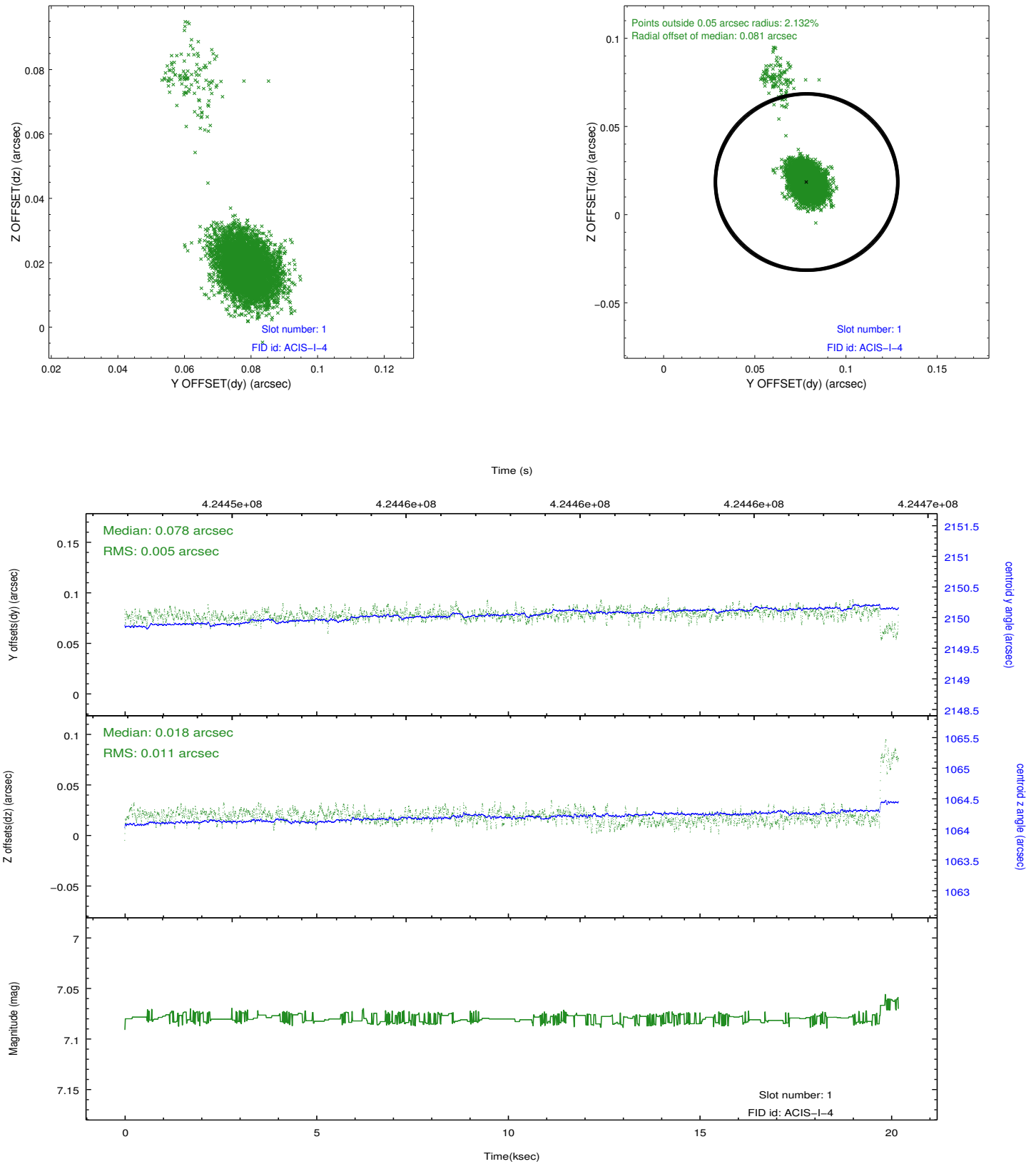


2.5 FID Slots

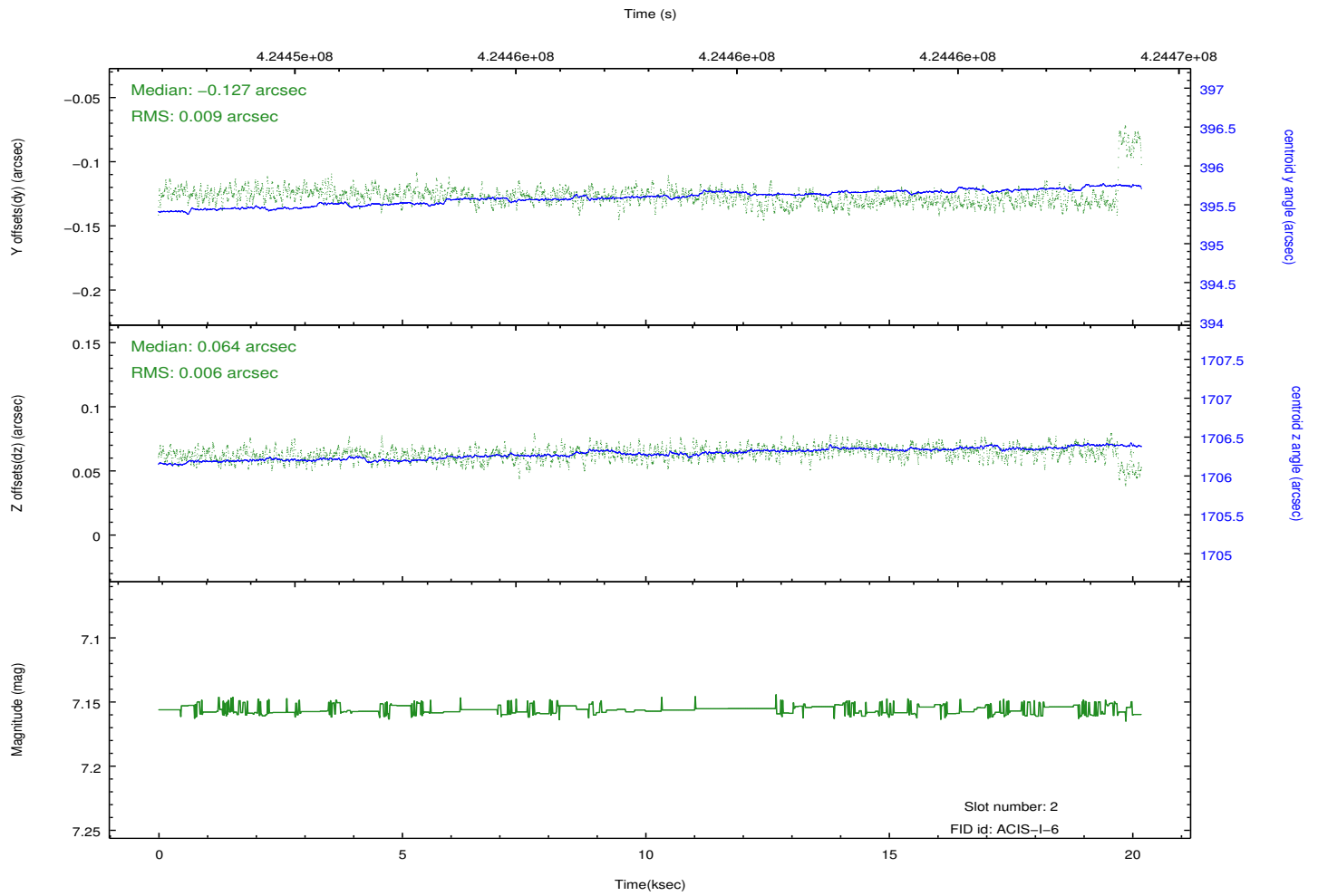
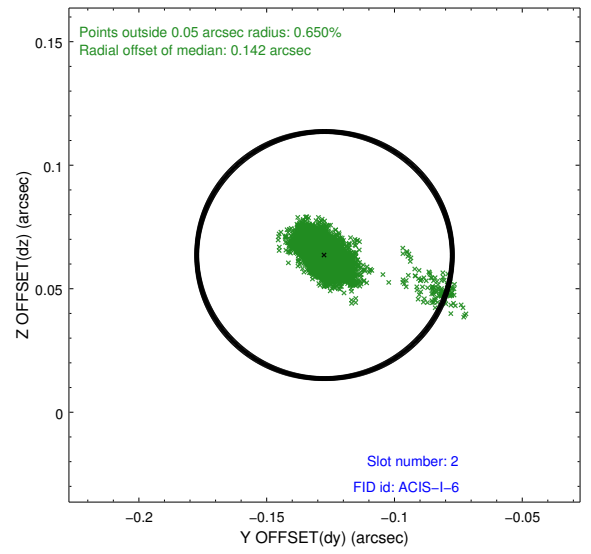
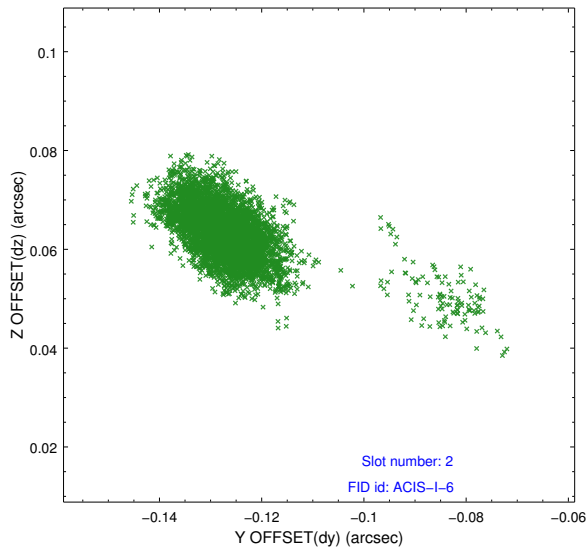
2.5.1 Slot 0



2.5.2 Slot 1



2.5.3 Slot 2



A Summary

A.1 Status

V&V Scientist	Beth Sundheim
V&V Date (YYYY-MM-DD)	2012.02.14
V&V Edition	1
V&V Disposition and Status	OK
V&V Charge Time	19.75679992646

A.2 Comments

Joint proposal with NOAO.