

V&V Reference Report

L2 ASCDS Version : 8.4.5

Observation 12705 - L2 Version 2
Chandra X-Ray Center

L2 Processing Date : Jul 4 2012

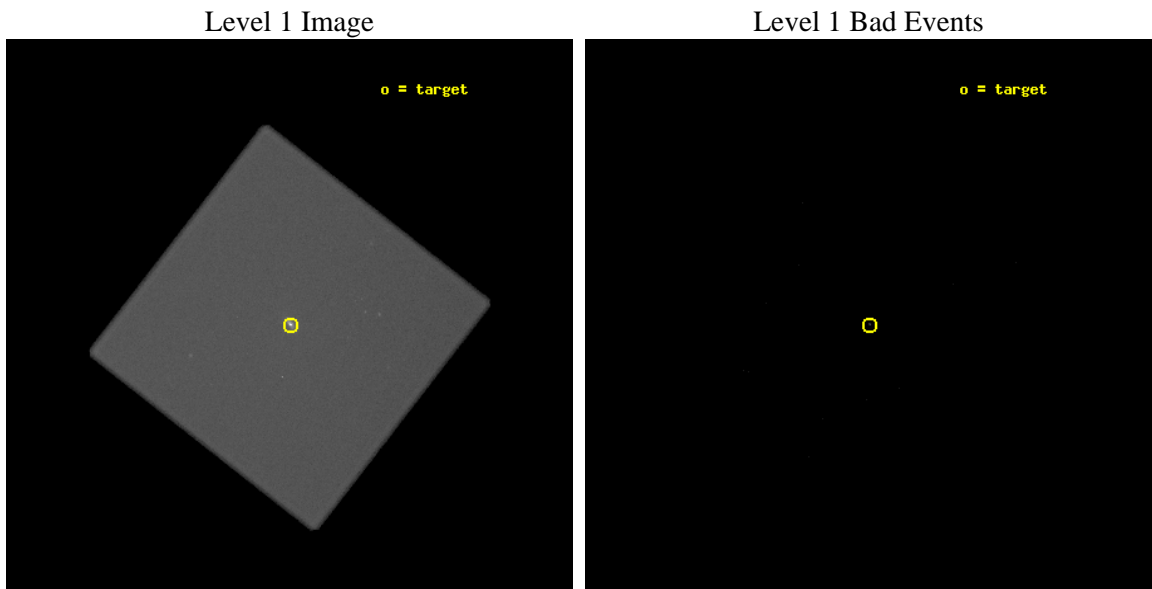
Contents

1	Front	2
2	OBI	3
2.1	OBI	3
2.1.1	Images	3
2.1.2	Parameters	4
2.1.3	Events	4
2.2	Compared Parameters	5
2.3	Aspect	6
2.4	Star Slots	9
2.4.1	Slot 3	9
2.4.2	Slot 4	10
2.4.3	Slot 5	11
2.4.4	Slot 6	12
2.4.5	Slot 7	13
2.5	FID Slots	14
2.5.1	Slot 0	14
2.5.2	Slot 1	15
2.5.3	Slot 2	16
A	Summary	17
A.1	Status	17
A.2	Comments	17

2 OBI

2.1 OBI

2.1.1 Images



2.1.2 Parameters

obi_num	0	Obi number	sched_exp_time	40000.000000	[s] Scheduled observation exposure time
ascdsver	8.4.5	Processing system revision	ontime	40179.233314037	[s]
caldbver	4.5.0	 	l1events	4436619	Number of level 1 events
date	2012-07-04T17:19:43	Date and time of file creation			
revision	2	Processing version of data			

2.1.3 Events

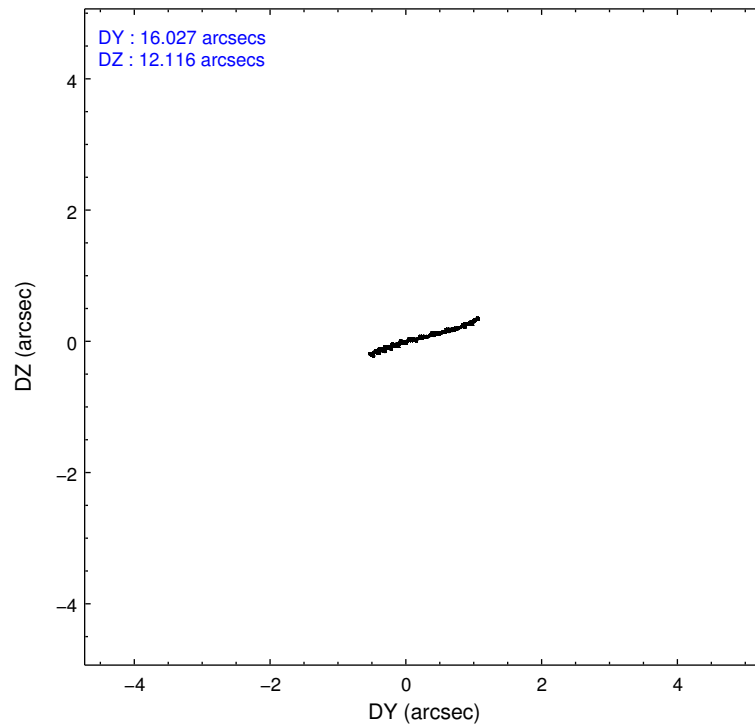
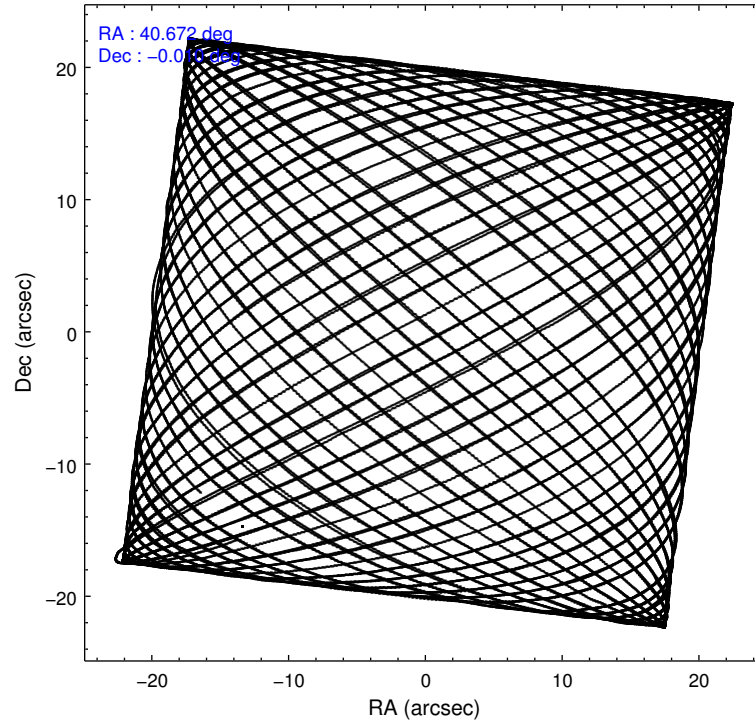
Level 1 Events

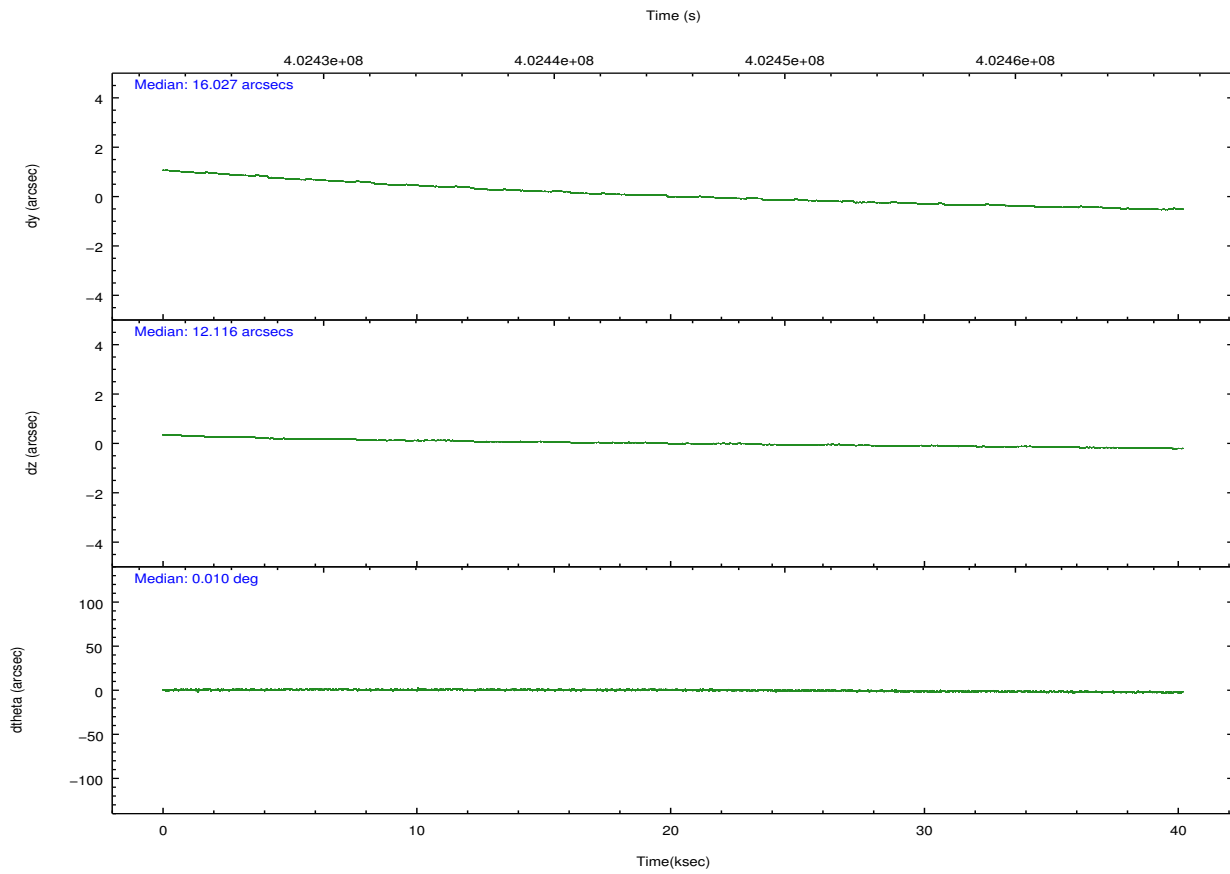
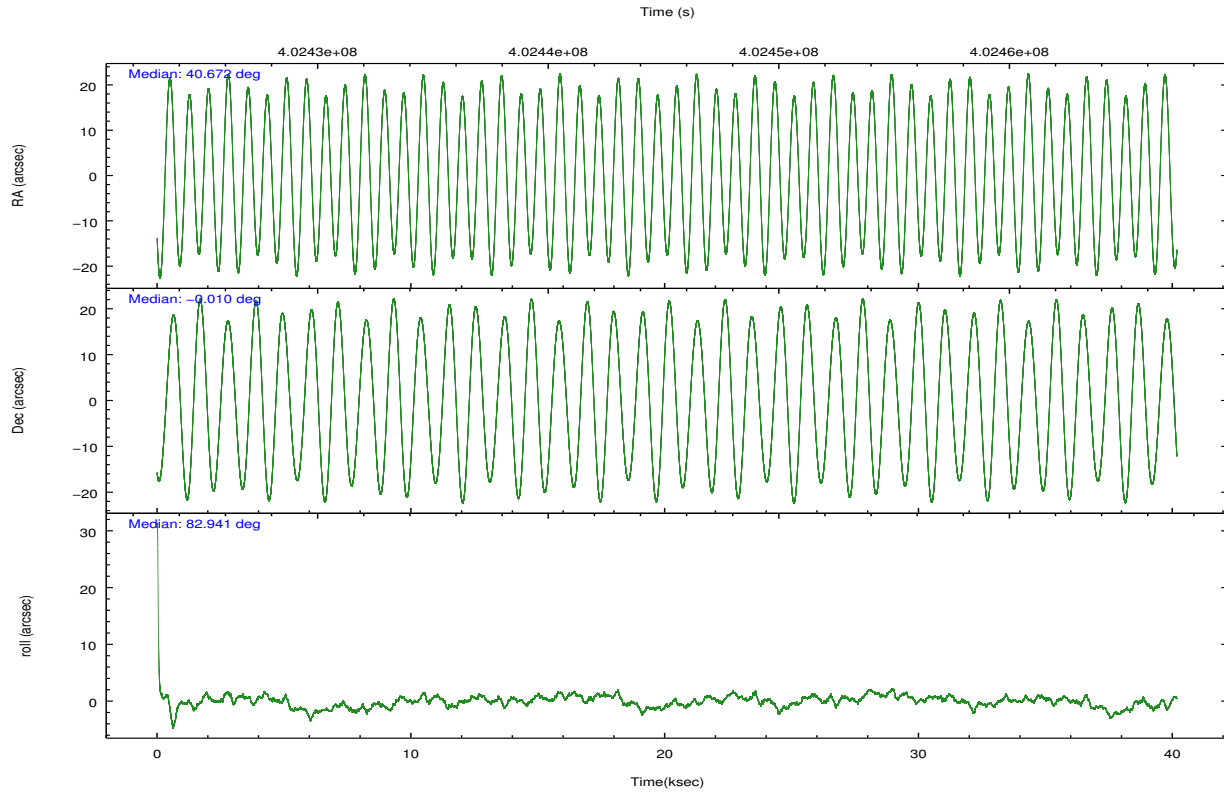
	segment 0
level 1 events	4436619
rejected events	168228
rejected %	3%

2.2 Compared Parameters

Parameter	Planned	Actual	Parameter	Planned	Actual
Instrument	HRC	HRC	Obspar format version number	7	7
Detector	HRC-I	HRC-I	Obspar file type	PREDICTED	ACTUAL
Grating	NONE	NONE	Obspar update status	NONE	UPDATED
Data mode	OBSERVING	OBSERVING			
Observation mode	POINTING	POINTING			
[deg] Pointing RA	40.683211	40.67200439360494			
[deg] Pointing Dec	-0.034534	-0.009720741105571872			
[deg] Pointing Roll	83.042135	82.94664113292849			
[mm] SIM focus pos	-1.040293	-1.038866356238299			
[mm] SIM defocus	0	0.001426264420575141			
[mm] SIM translation stage pos	126.985494	126.9829799899862			
[mm] SIM translation stage offset	0	0.002508901615314585			
[s] Observation start time (MET)	402425241.184000	402423491.27056			
Observation start date	2010-10-02T16:46:15	2010-10-02T16:18:11			
[s] Observation end time (MET)	402465241.184000	402466077.97275			
Observation end date	2010-10-03T03:52:55	2010-10-03T04:07:57			

2.3 Aspect



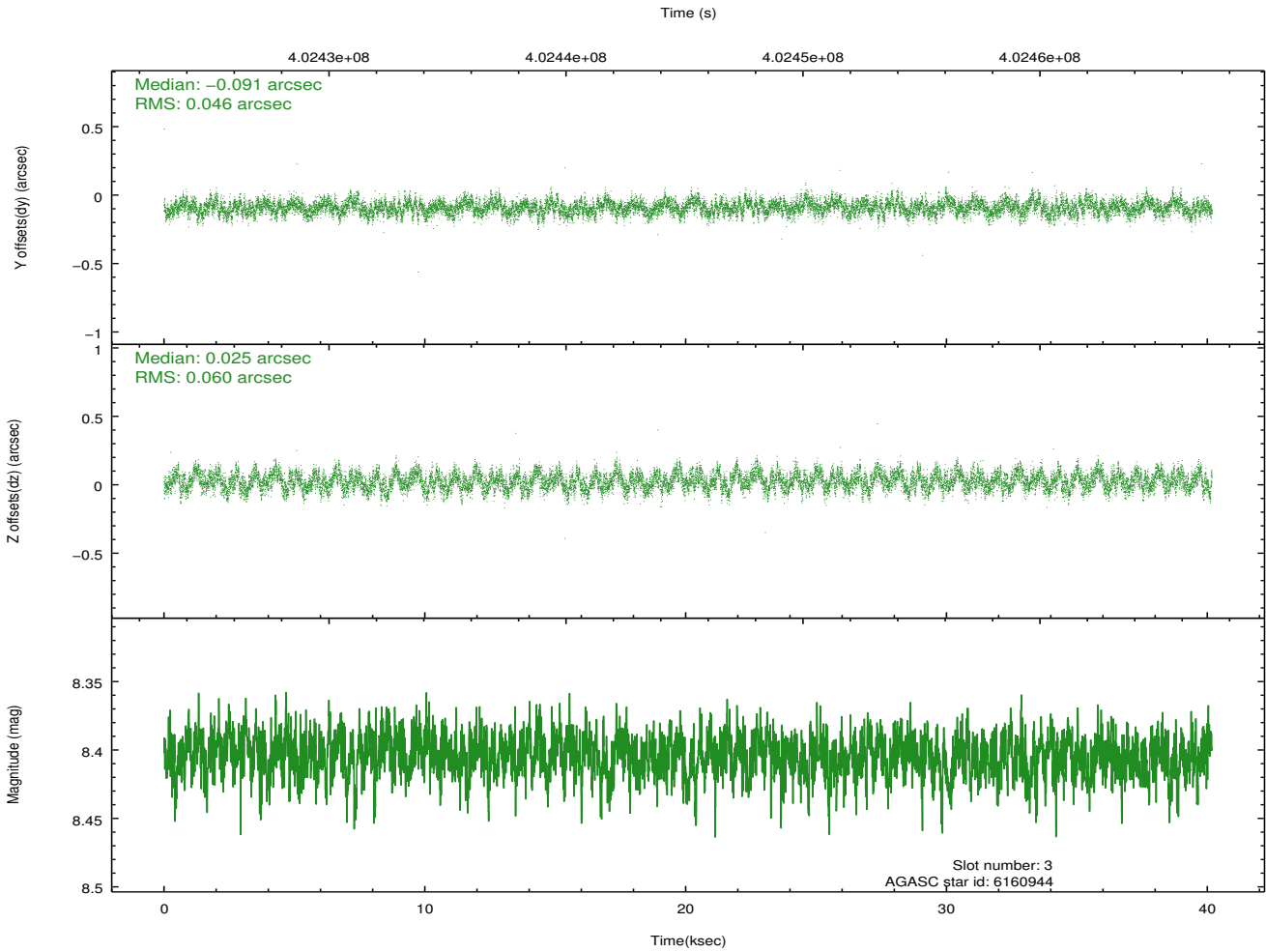
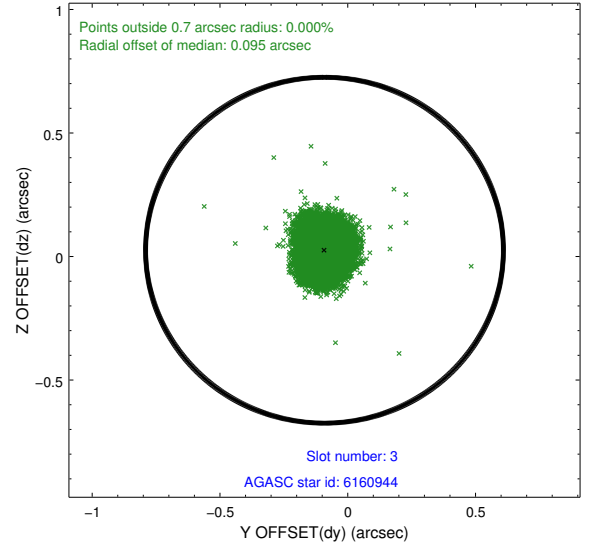
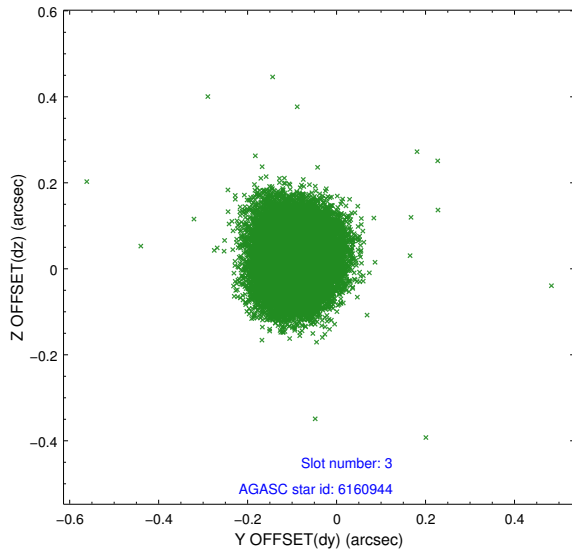


Slot Statistics

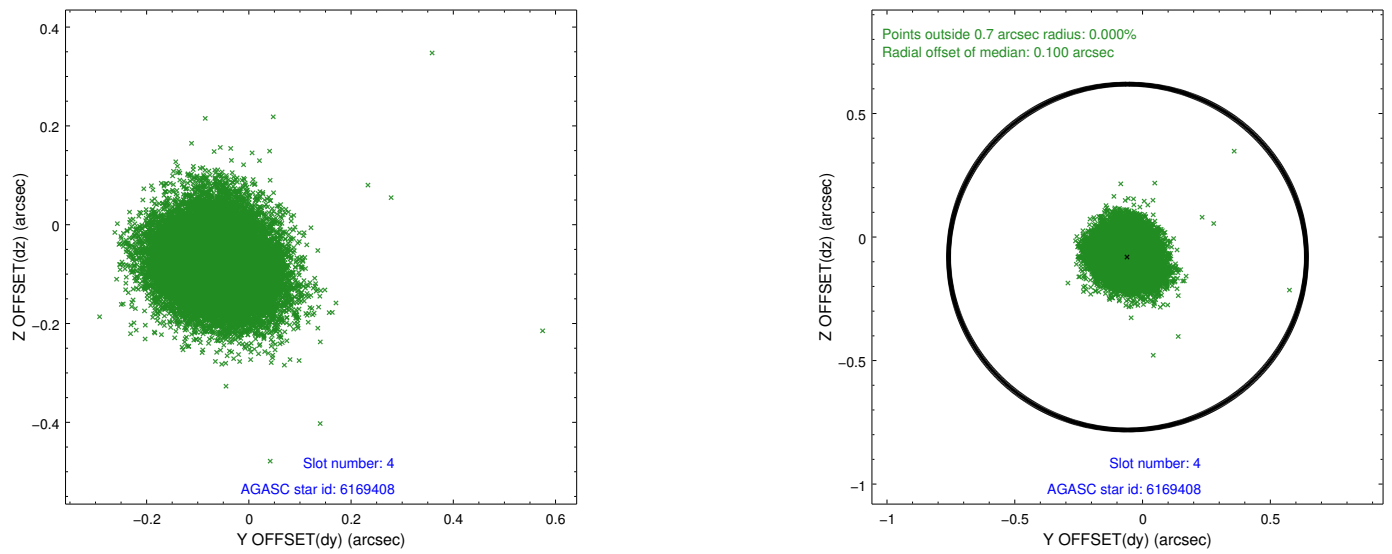
slot	status	id	mag	n_pts	med_dy	med_dz	dr1	dr2	ra	dec	mean_y	mean_z
0	FID	HRC-I-1	6.97	9799	-0.068	0.021	0.012	0.019	0.000000	0.000000	-772.06	-1300.10
1	FID	HRC-I-2	6.99	9800	0.225	-0.129	0.009	0.020	0.000000	0.000000	840.79	-1301.98
2	FID	HRC-I-3	7.05	9800	-0.038	0.019	0.011	0.018	0.000000	0.000000	-1200.39	1004.34
3	GUIDE	6160944	8.40	19590	-0.091	0.025	0.081	0.128	40.821496	0.087247	495.85	-440.98
4	GUIDE	6169408	8.97	19577	-0.059	-0.081	0.092	0.147	40.937839	0.210390	986.55	-802.71
5	GUIDE	615907528	7.78	19596	0.082	0.040	0.066	0.105	41.252710	-0.191636	-312.27	-2103.50
6	GUIDE	615909768	9.08	19567	0.174	-0.021	0.113	0.180	40.904100	-0.344520	-1011.00	-924.36
7	GUIDE	615913552	8.70	19590	-0.104	0.035	0.081	0.132	41.235237	-0.003650	351.49	-1959.11

2.4 Star Slots

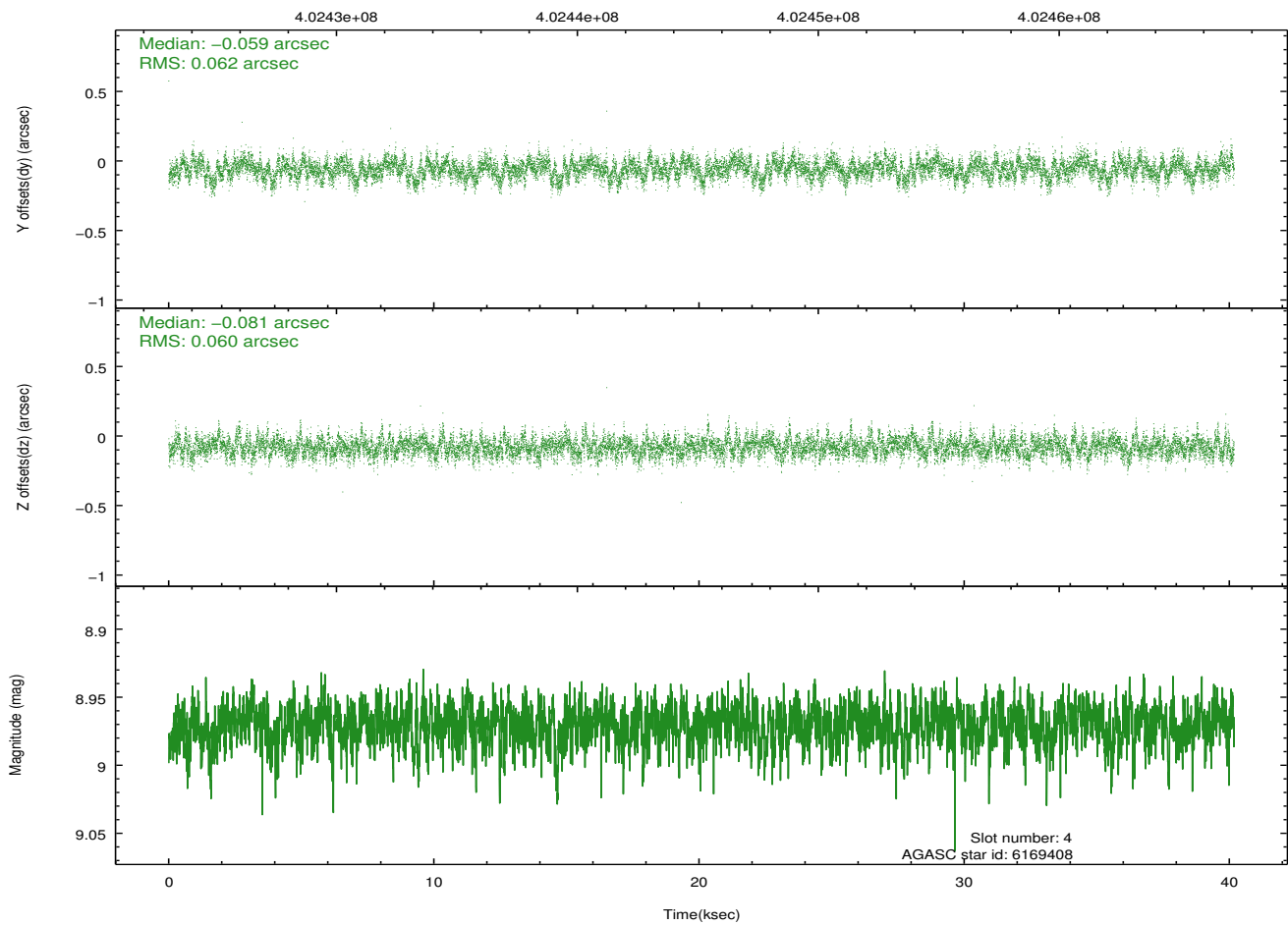
2.4.1 Slot 3



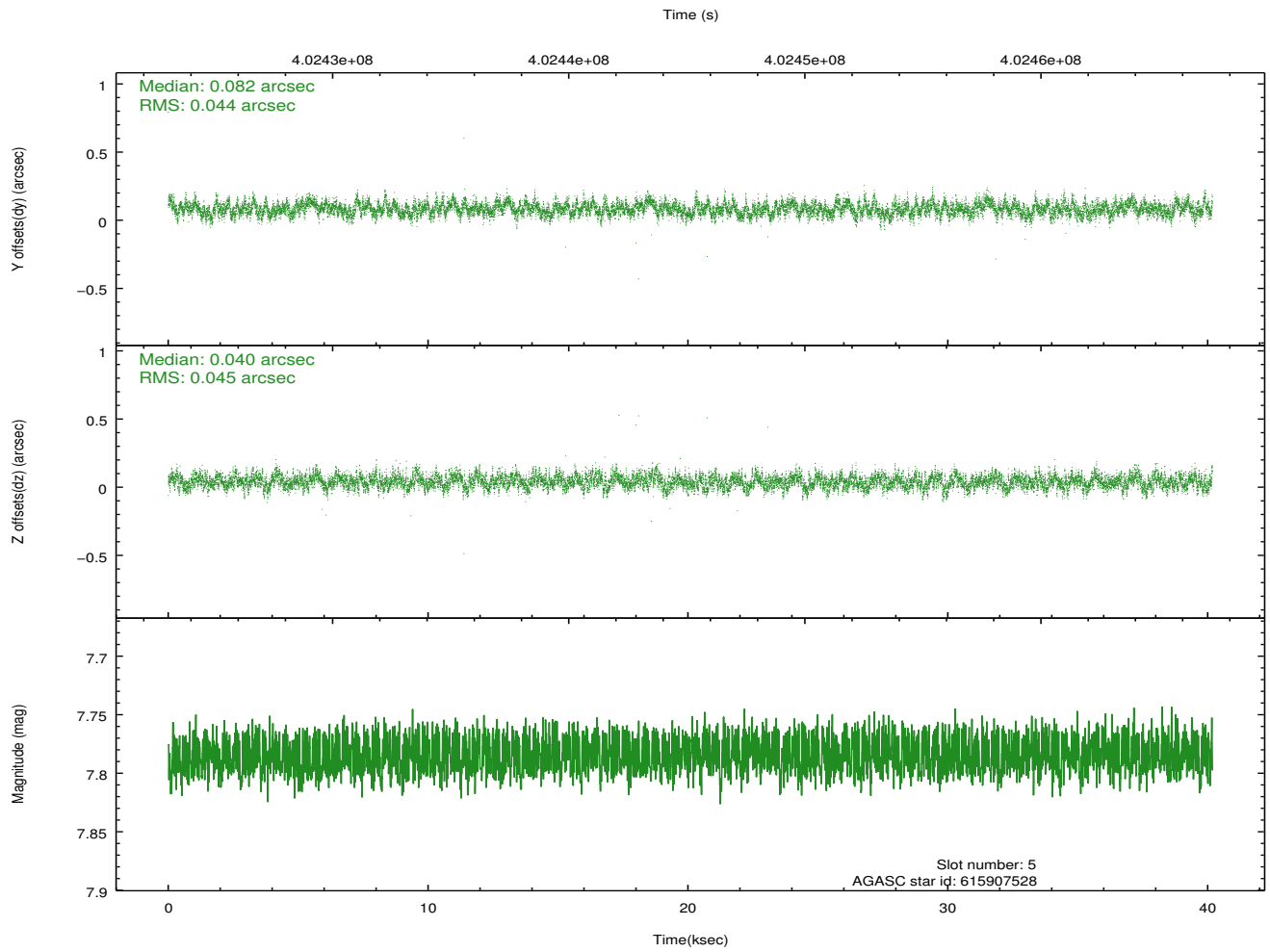
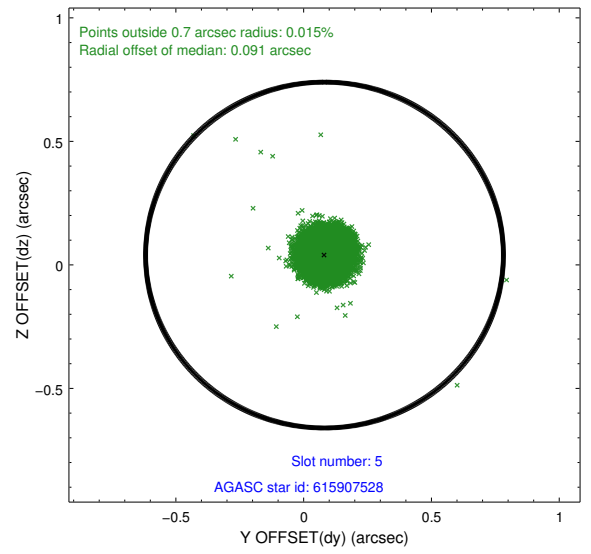
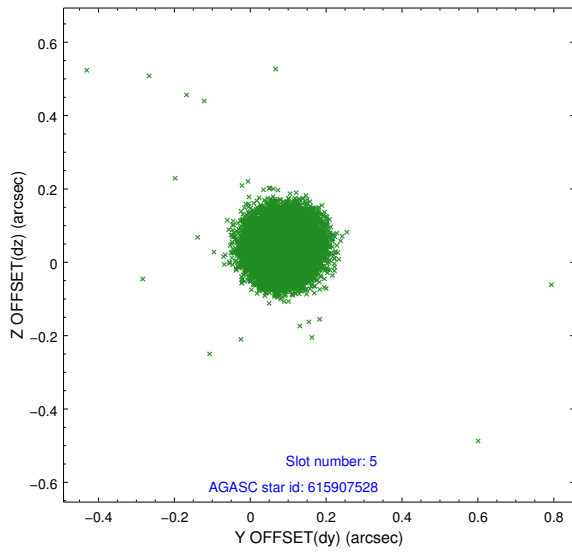
2.4.2 Slot 4



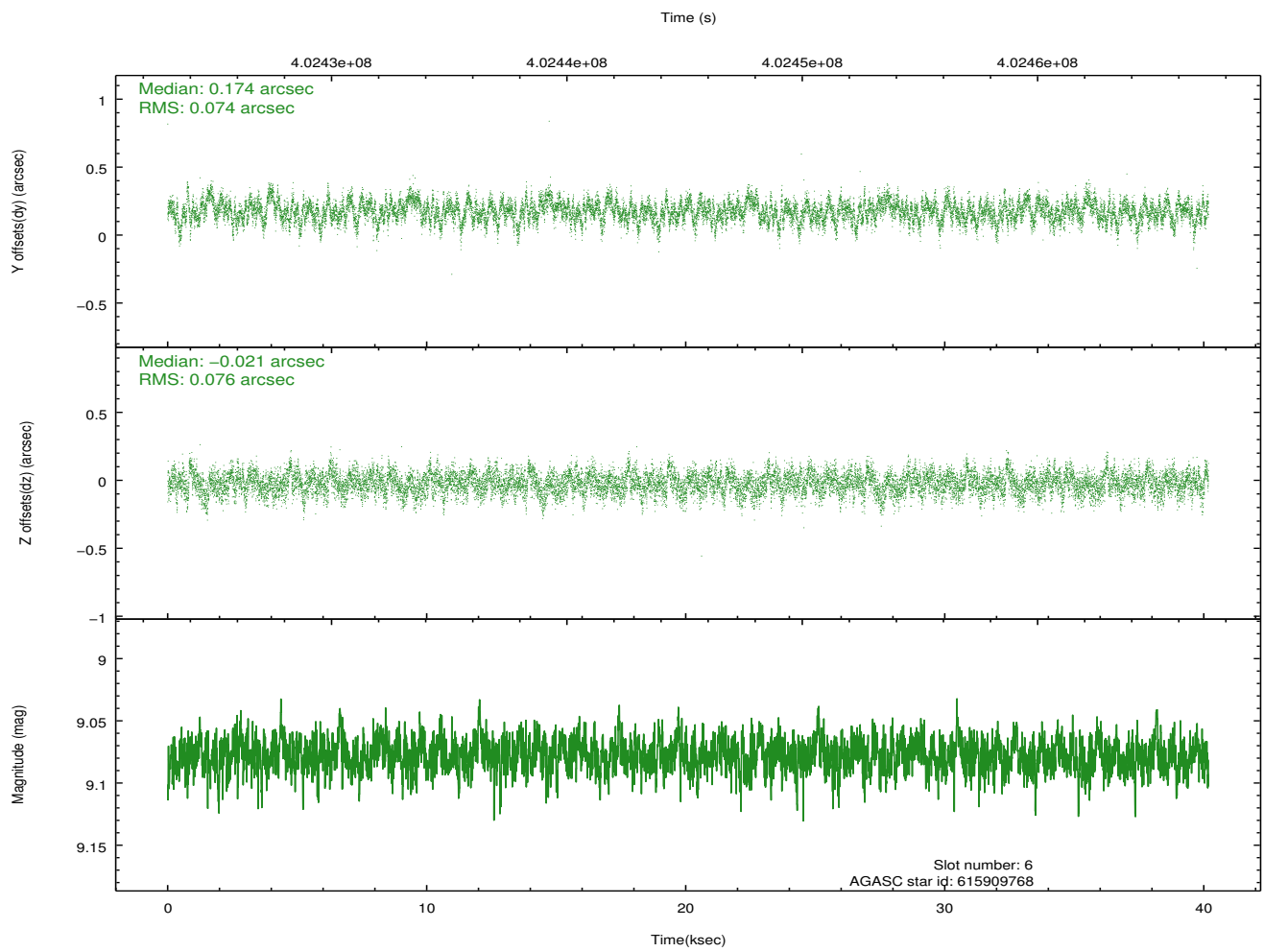
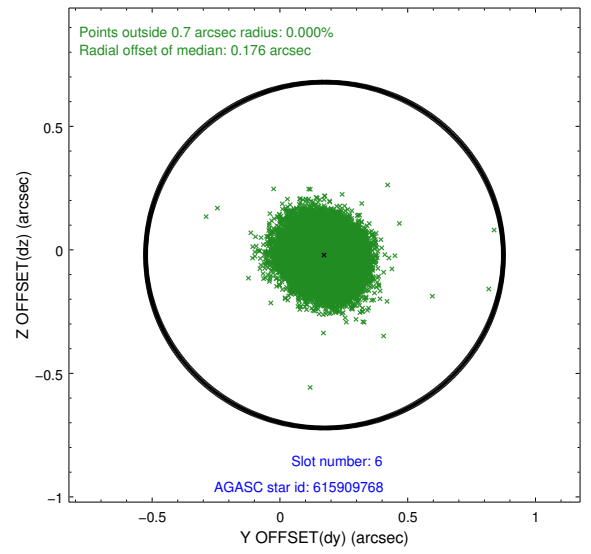
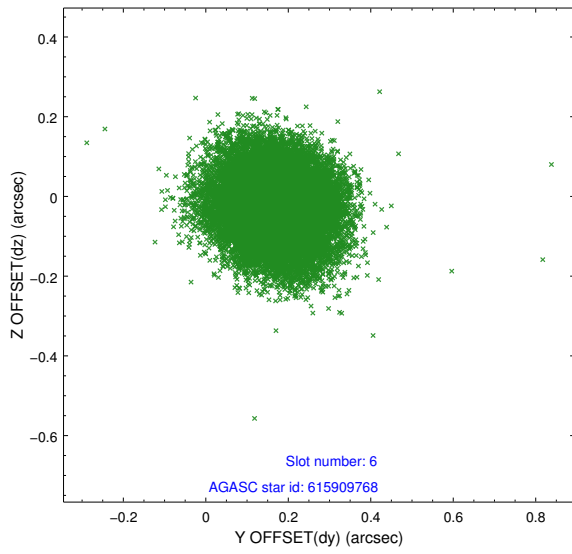
Time (s)



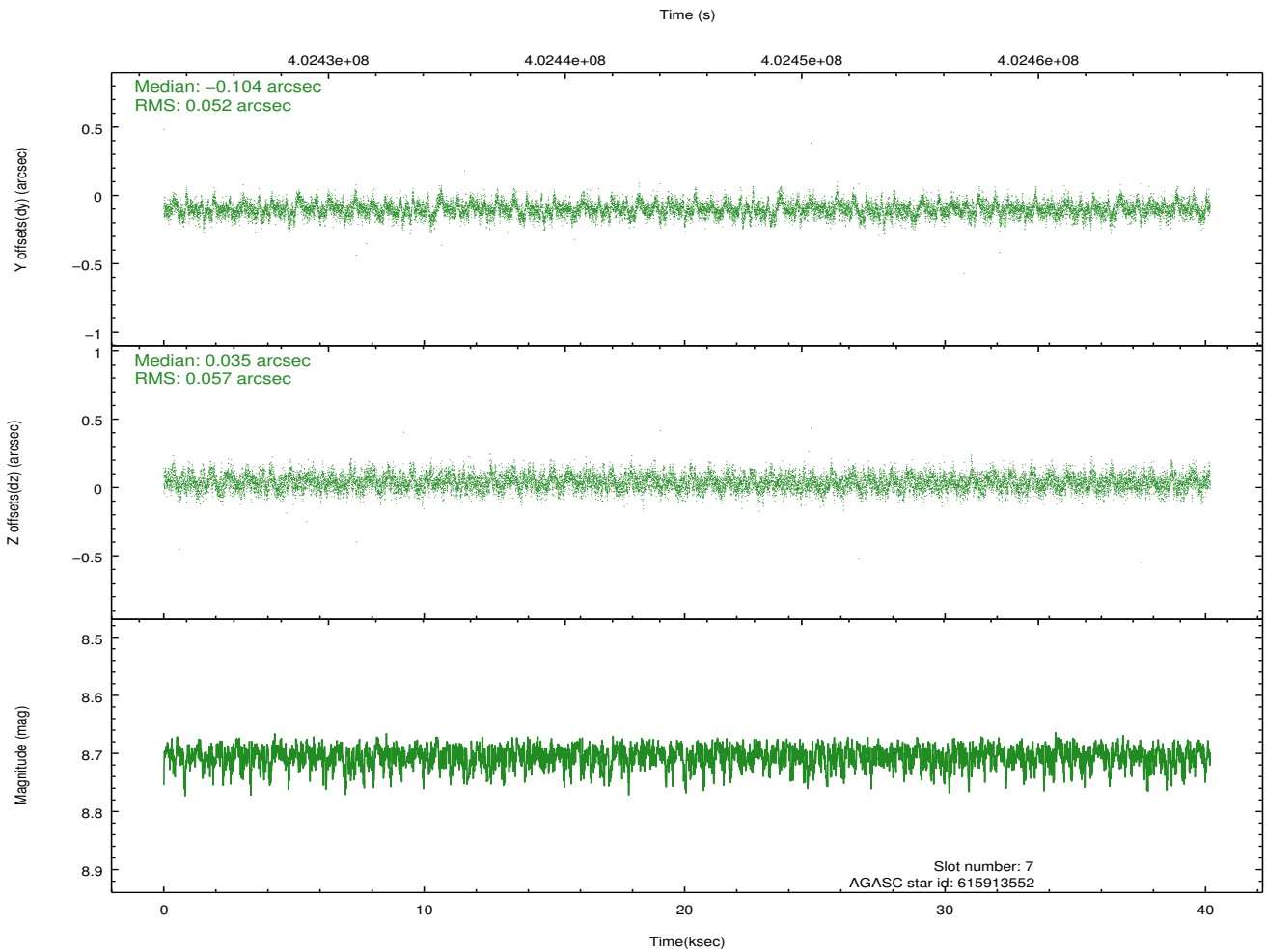
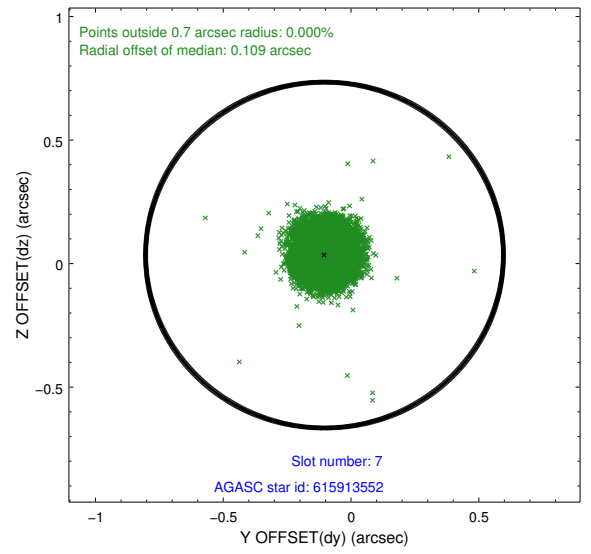
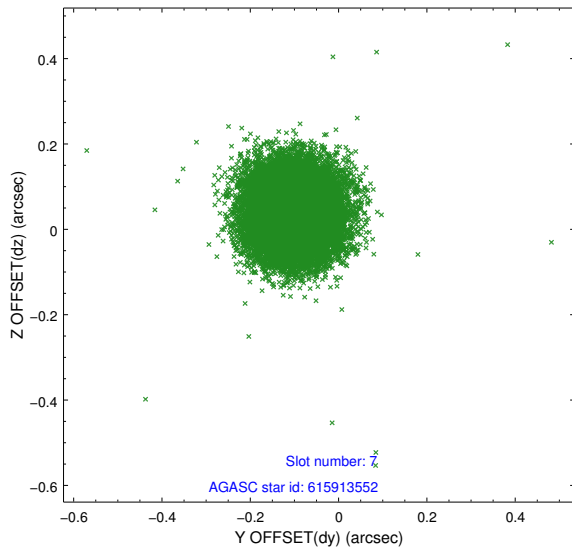
2.4.3 Slot 5



2.4.4 Slot 6

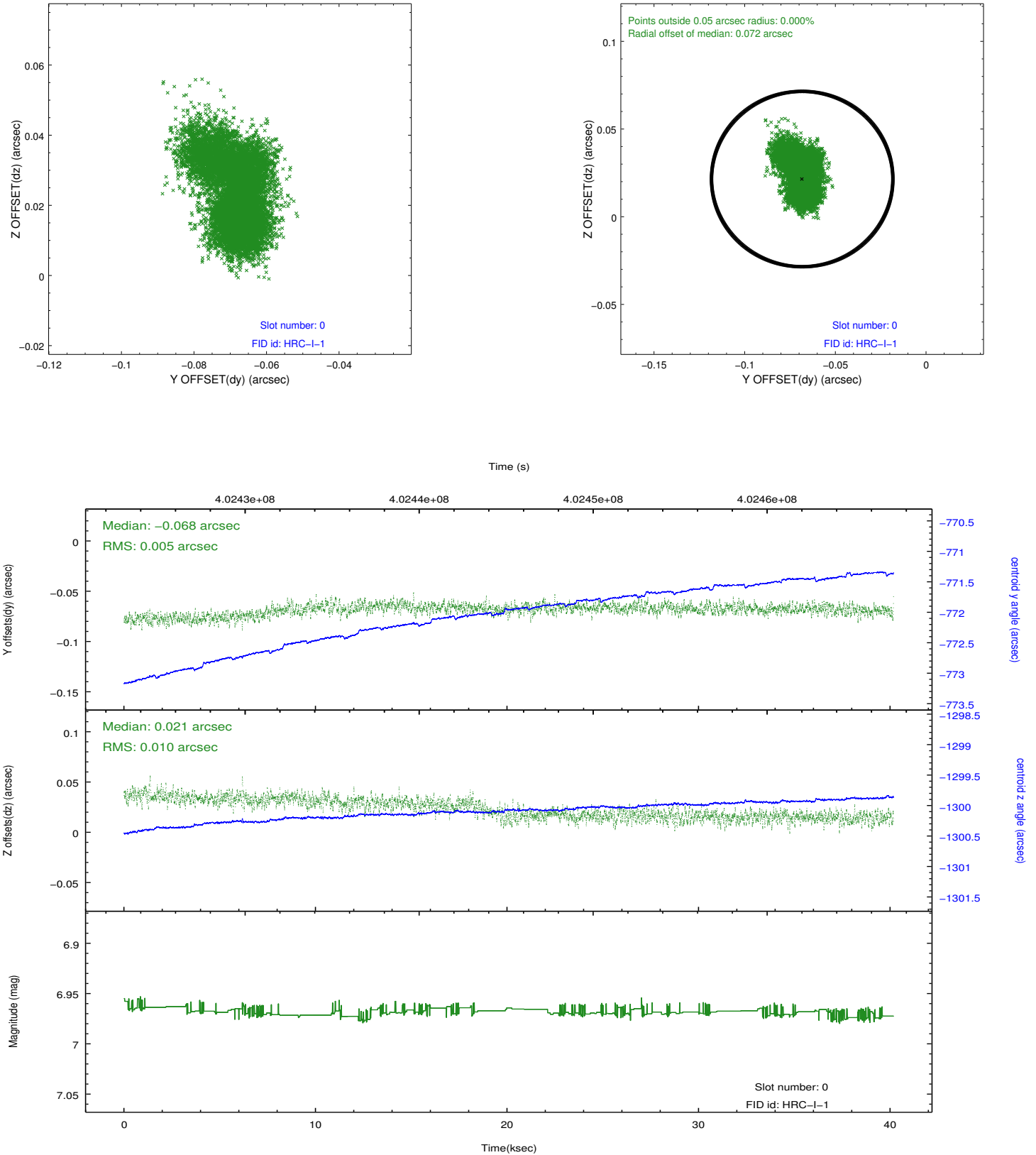


2.4.5 Slot 7

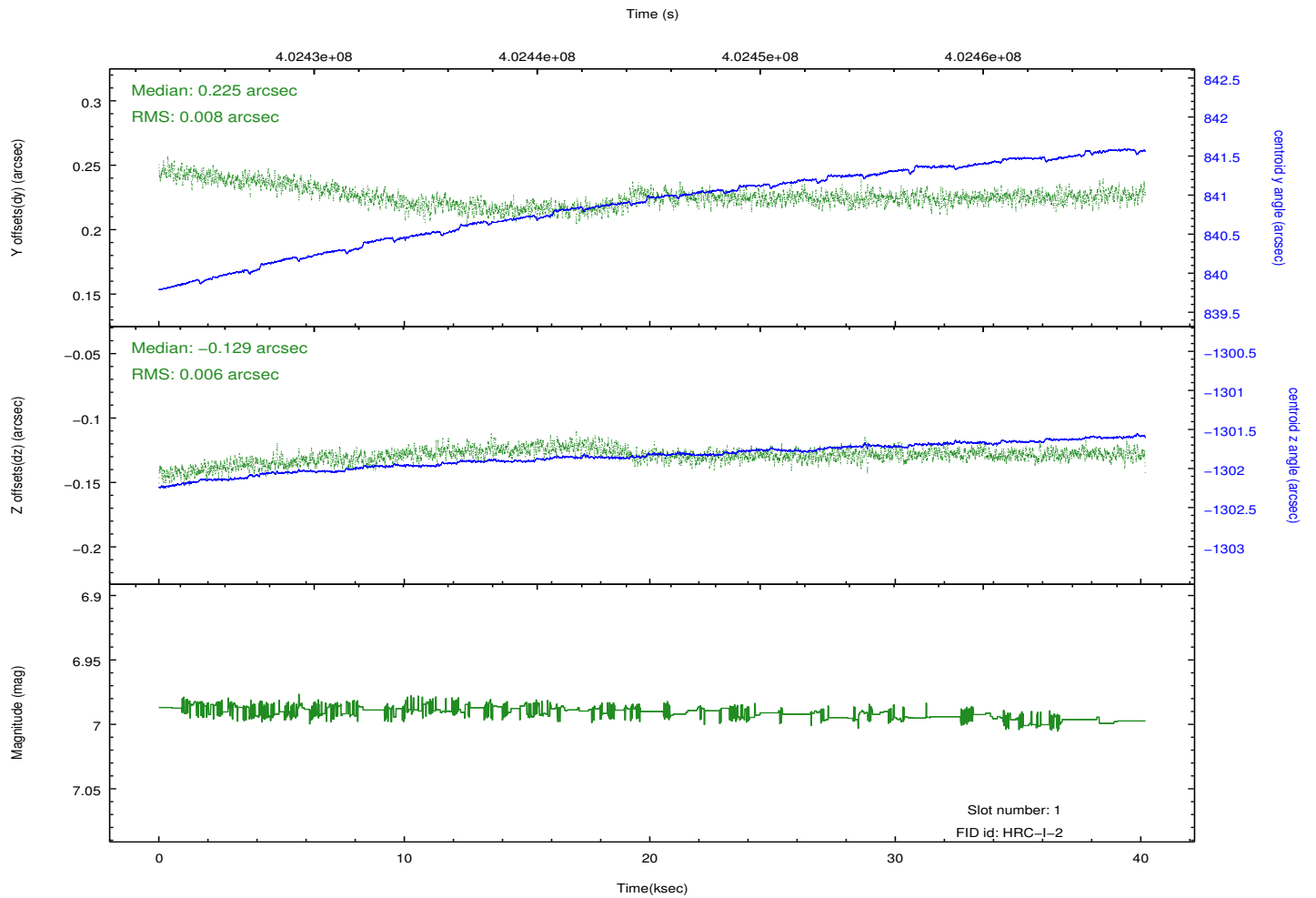
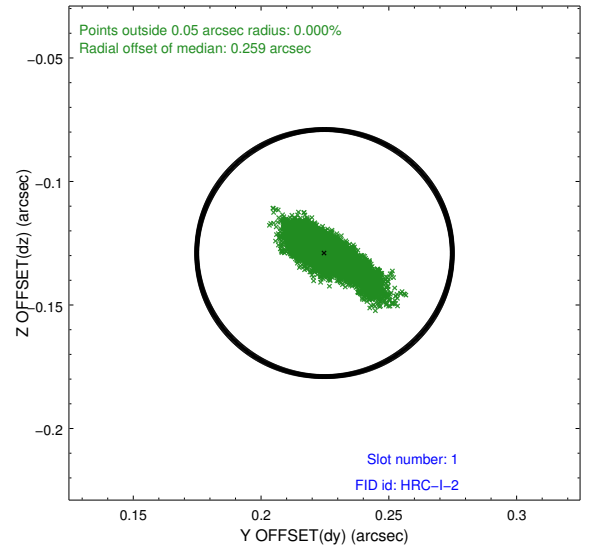
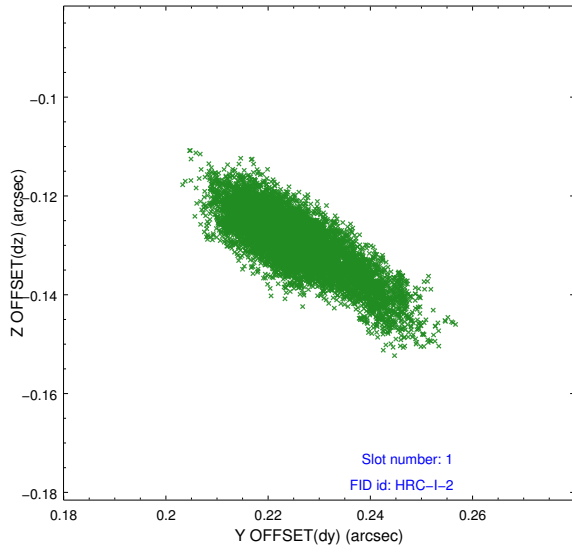


2.5 FID Slots

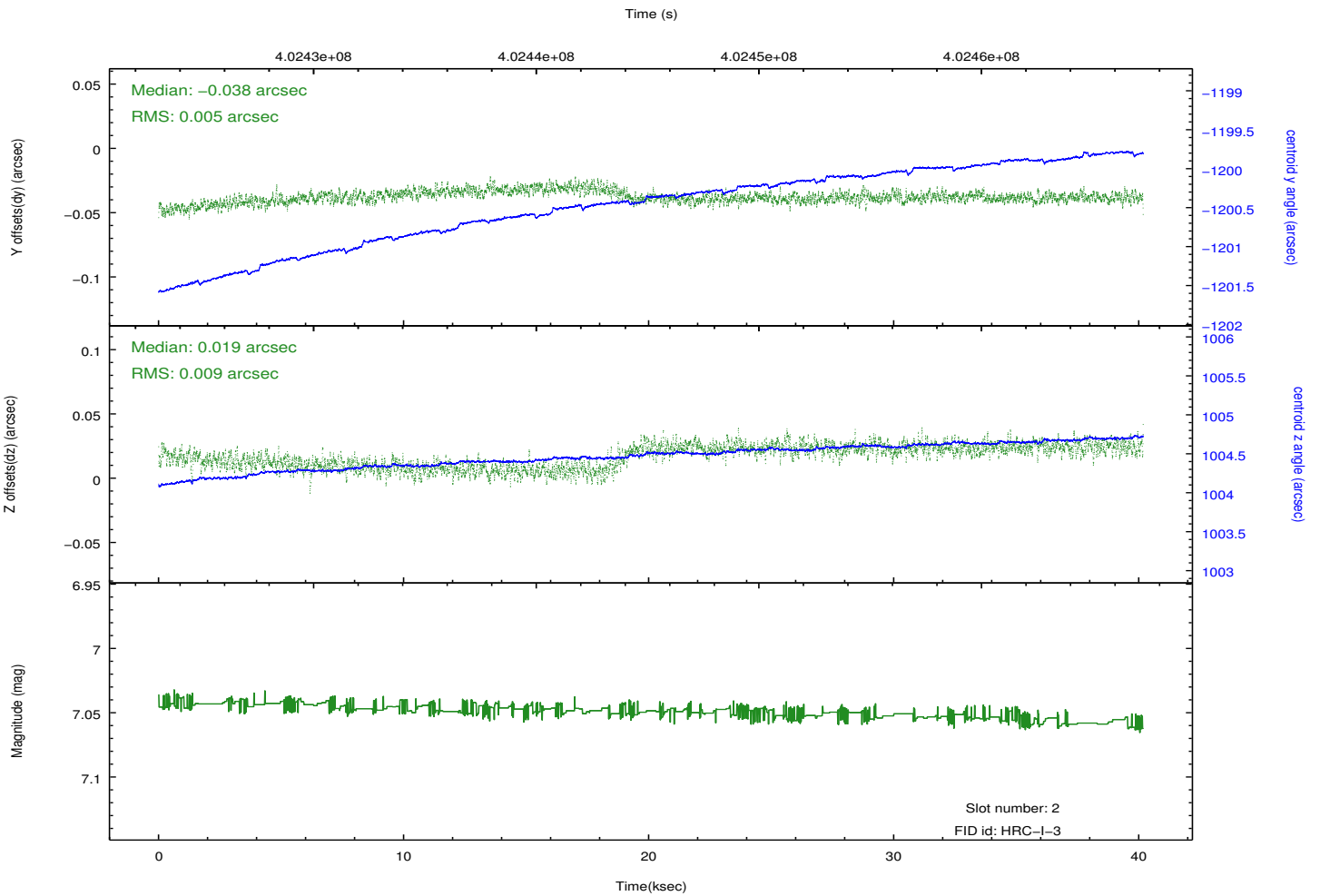
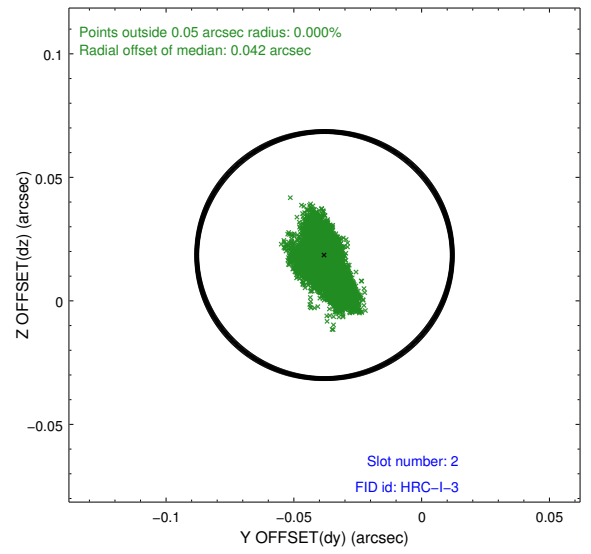
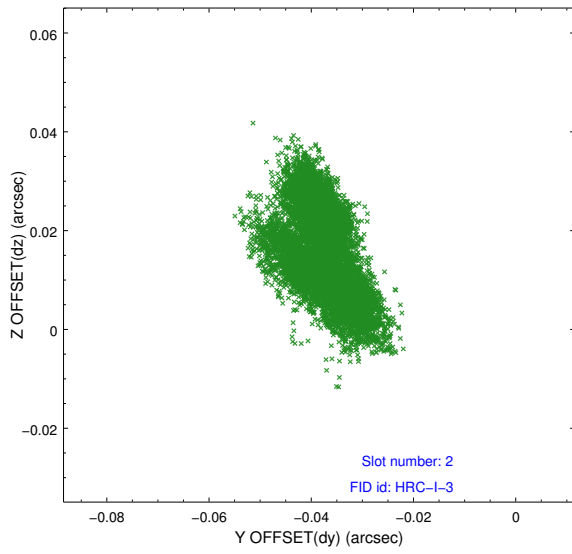
2.5.1 Slot 0



2.5.2 Slot 1



2.5.3 Slot 2



A Summary

A.1 Status

V&V Scientist	Beth Sundheim
V&V Date (YYYY-MM-DD)	2012.07.13
V&V Edition	1
V&V Disposition and Status	OK
V&V Charge Time	40.179233313382

A.2 Comments