

# V&V Reference Report

## L2 ASCDS Version : 8.4.5

Observation 12735 - L2 Version 2  
Chandra X-Ray Center

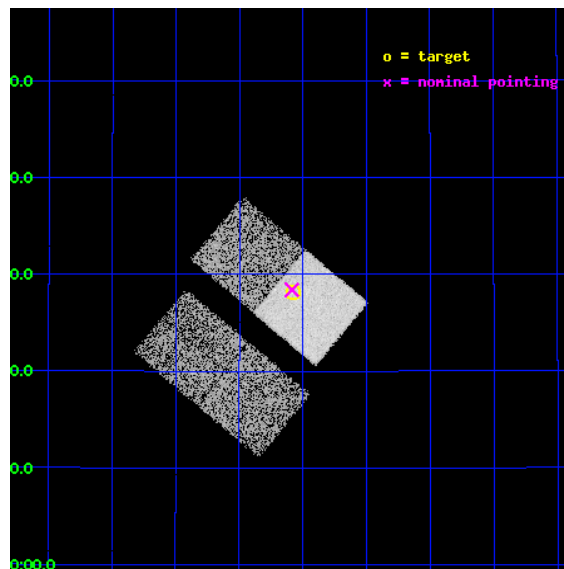
L2 Processing Date : Jul 7 2012

## Contents

<b>1</b>	<b>Front</b>	<b>2</b>
<b>2</b>	<b>OBI</b>	<b>3</b>
2.1	OBI . . . . .	3
2.1.1	Images . . . . .	3
2.1.2	Bias . . . . .	3
2.1.3	Parameters . . . . .	4
2.1.4	Events . . . . .	4
2.2	Compared Parameters . . . . .	5
2.3	Aspect . . . . .	6
2.4	Star Slots . . . . .	9
2.4.1	Slot 3 . . . . .	9
2.4.2	Slot 4 . . . . .	10
2.4.3	Slot 5 . . . . .	11
2.4.4	Slot 6 . . . . .	12
2.4.5	Slot 7 . . . . .	13
2.5	FID Slots . . . . .	14
2.5.1	Slot 0 . . . . .	14
2.5.2	Slot 1 . . . . .	15
2.5.3	Slot 2 . . . . .	16
<b>A</b>	<b>Summary</b>	<b>17</b>
A.1	Status . . . . .	17
A.2	Comments . . . . .	17

# 1 Front

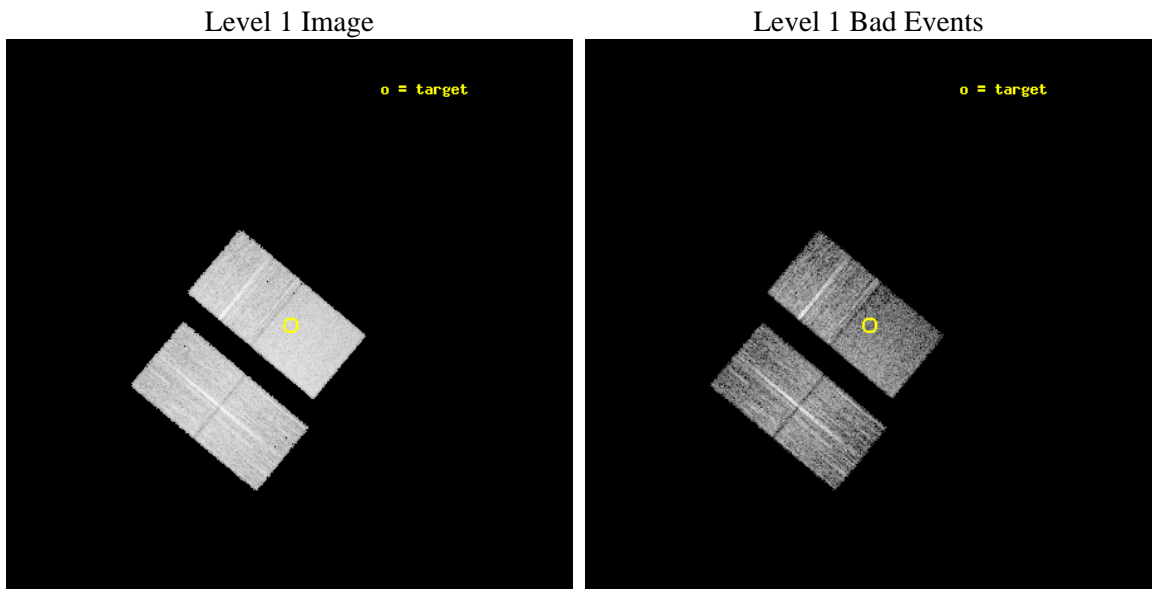
seq_num	702371	Sequence number
obs_id	12735	Observation id
title	Completing the Chandra 3C Snapshot Survey: Extragalactic Radio Sources with $z < 0.3$	Proposal title
observer	Dr. Daniel Harris	Principal investigator
object	3C 284	Source name
dtcycle	0	&#160
cycle	P	events from which exps? Prim/Second/Both
ra_targ	197.77	Observer's specified target RA [deg]
dec_targ	27.468806	Observer's specified target Dec [deg]
ra_nom	197.77173602441	Nominal RA [deg]
dec_nom	27.473449121501	Nominal Dec [deg]
roll_nom	39.911384936227	Nominal Roll [deg]
revision	2	Processing version of data
ontime	8053.8000619411	Sum of GTIs [s]
livetime	7948.5712350105	Livetime [s]
ontime2	8053.8000619411	Sum of GTIs [s]
ontime3	8053.8000619411	Sum of GTIs [s]
ontime6	8053.8000619411	Sum of GTIs [s]
ontime7	8053.8000619411	Sum of GTIs [s]
l2events	46588	Number of level 2 events



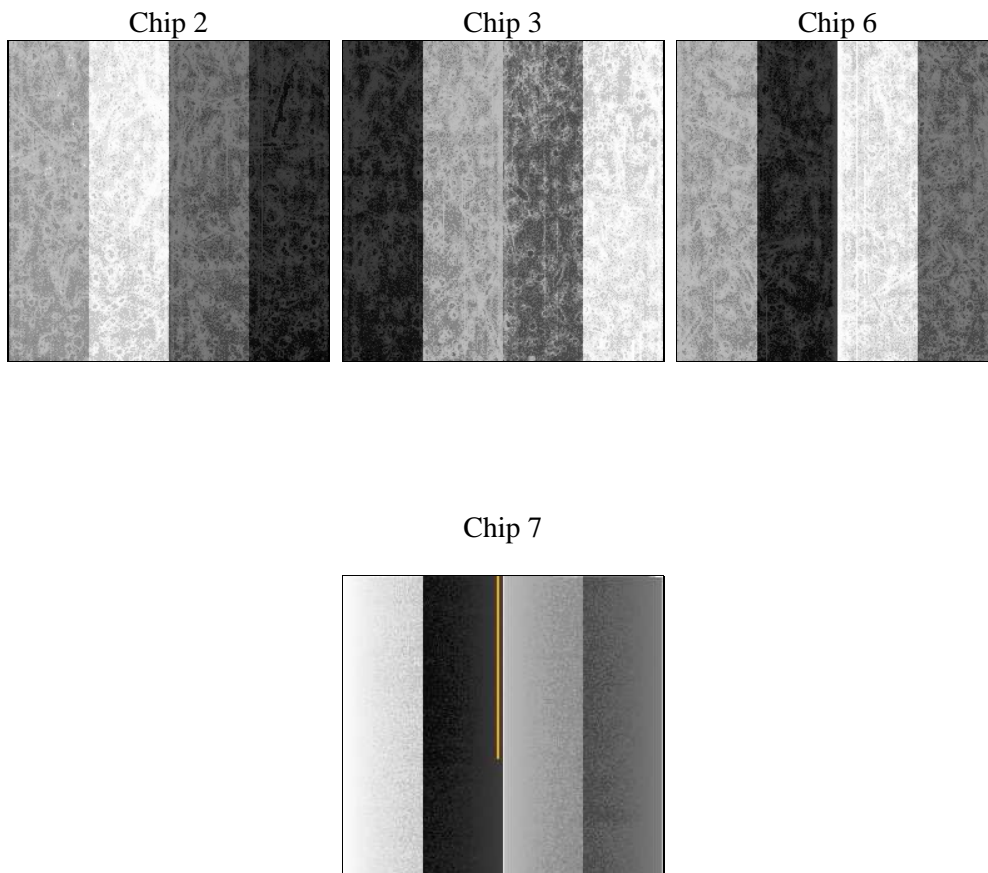
## 2 OBI

### 2.1 OBI

#### 2.1.1 Images



#### 2.1.2 Bias



### 2.1.3 Parameters

obi_num	0	Obi number	sched_exp_time	8000.000000	[s] Scheduled observation exposure time
ascdsver	8.4.5	Processing system revision	ontime	8053.8000619411	Sum of GTIs [s]
caldsver	4.5.0	&#160	ontime2	8053.8000619411	Sum of GTIs [s]
date	2012-07-07T03:04:32	Date and time of file creation	ontime3	8053.8000619411	Sum of GTIs [s]
revision	2	Processing version of data	ontime6	8053.8000619411	Sum of GTIs [s]
			ontime7	8053.8000619411	Sum of GTIs [s]
			l1events	235648	Number of level 1 events

### 2.1.4 Events

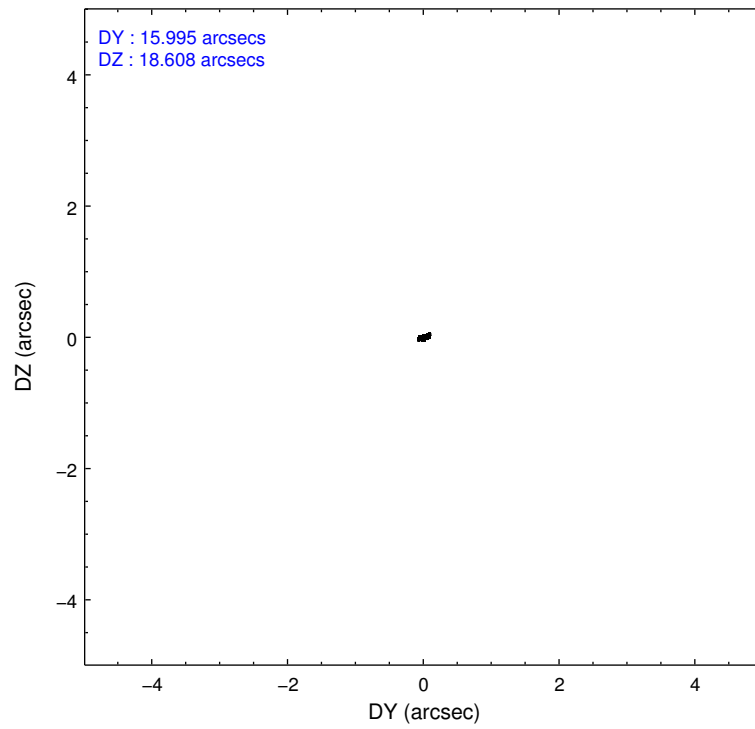
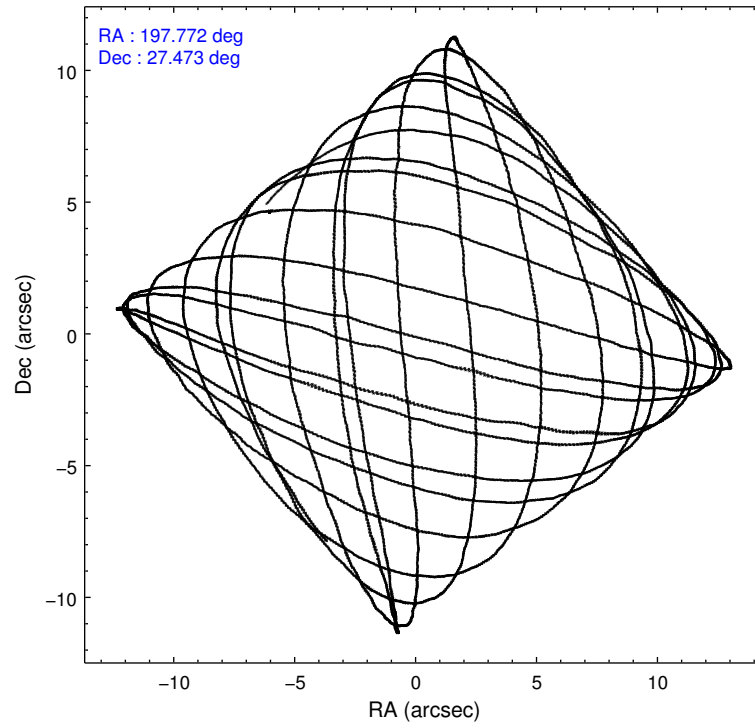
	ccd 2	ccd 3	ccd 6	ccd 7
level 1 events	53367	55069	57051	70161
rejected events	47413	49269	50511	38552
rejected %	88%	89%	88%	54%

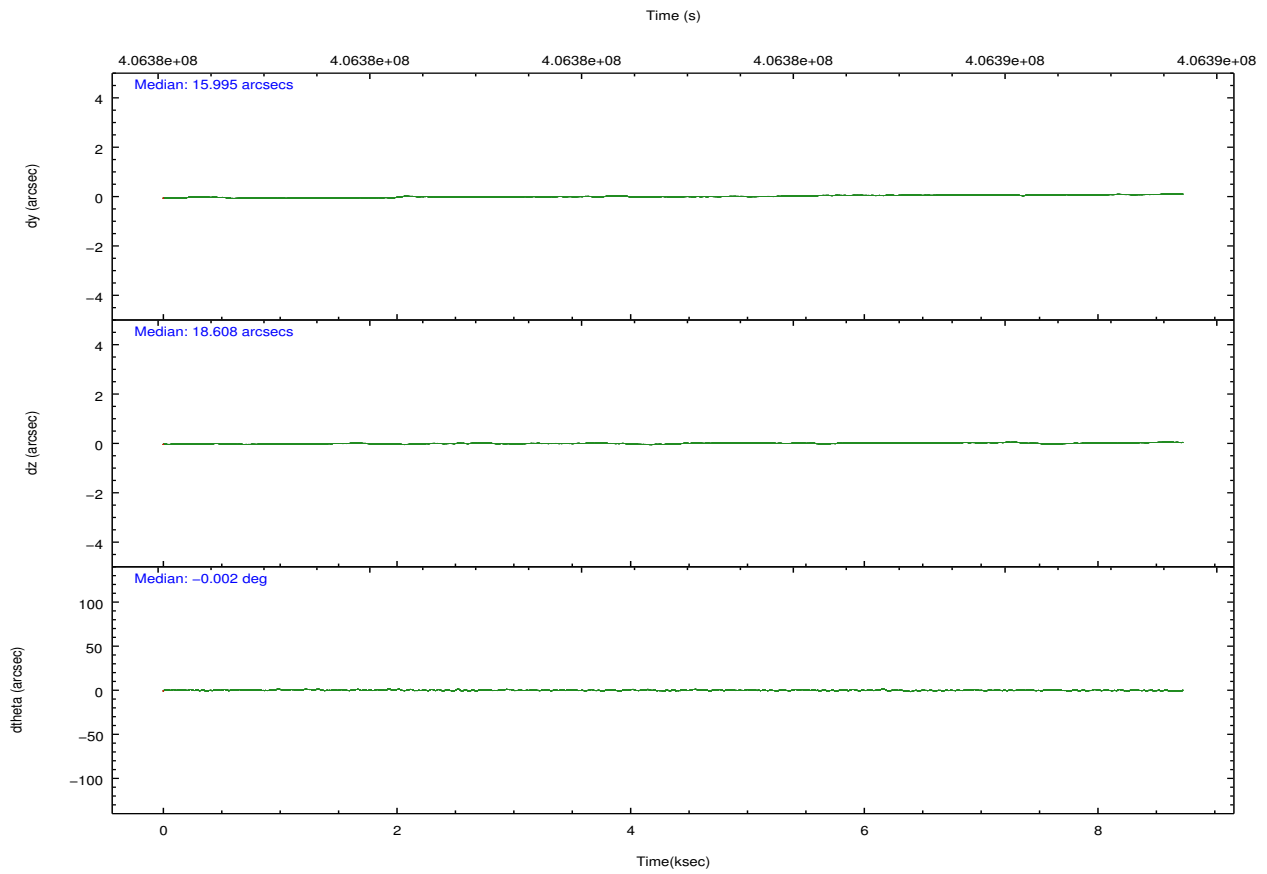
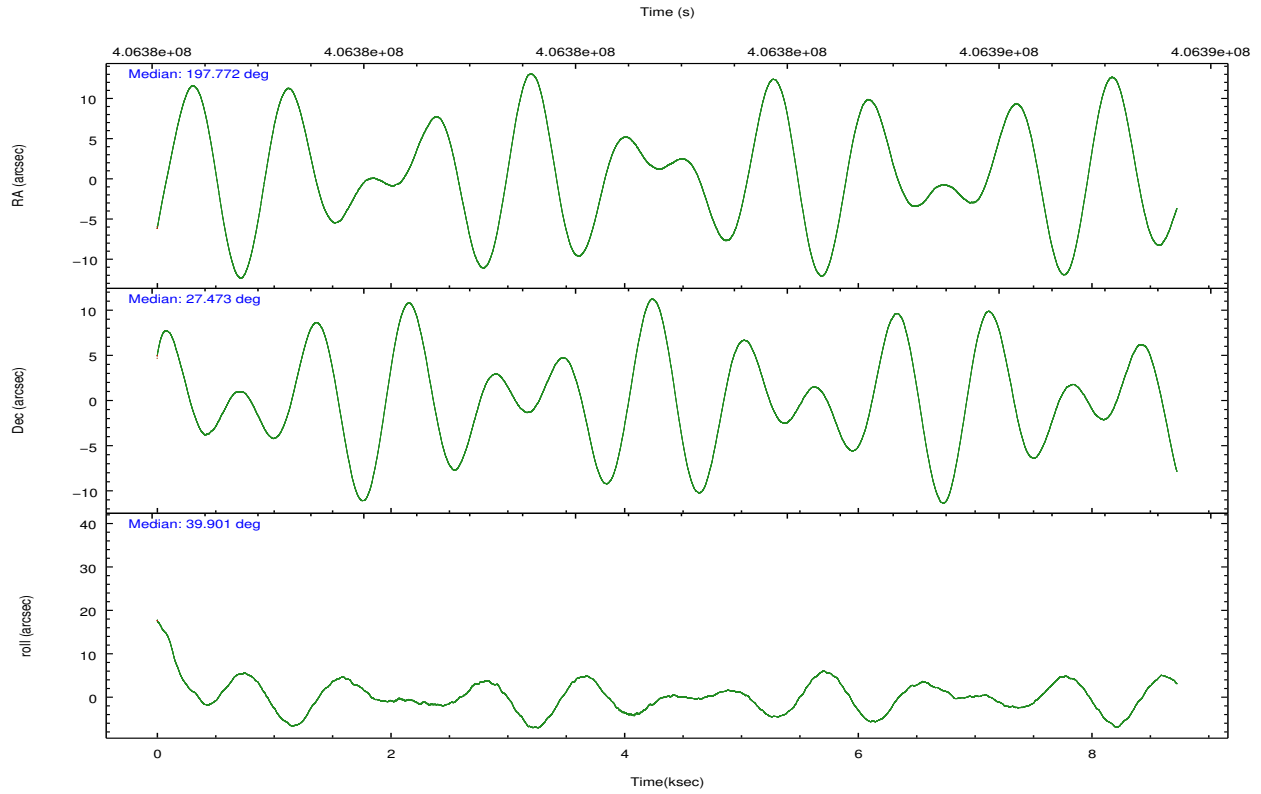
	ccd 2	ccd 3	ccd 6	ccd 7
grade 0 events	2126	2020	2256	2970
	3%	3%	3%	4%
grade 1 events	29	40	32	94
	0%	0%	0%	0%
grade 2 events	1428	1287	1522	6394
	2%	2%	2%	9%
grade 3 events	613	651	680	2851
	1%	1%	1%	4%
grade 4 events	666	568	627	2861
	1%	1%	1%	4%
grade 5 events	2232	2554	2606	7323
	4%	4%	4%	10%
grade 6 events	1126	1276	1459	16556
	2%	2%	2%	23%
grade 7 events	45147	46673	47869	31112
	84%	84%	83%	44%

## 2.2 Compared Parameters

Parameter	Planned	Actual	Parameter	Planned	Actual
Instrument	ACIS	ACIS	Obspar format version number	7	7
Detector	ACIS-2367	ACIS-2367	Obspar file type	PREDICTED	ACTUAL
Grating	NONE	NONE	Obspar update status	NONE	UPDATED
Data mode	VFAINT	VFAINT	CCD I0 on	N	N
Observation mode	POINTING	POINTING	CCD I1 on	N	N
[deg] Pointing RA	197.761533	197.7717360244053	CCD I2 on	O1	Y
[deg] Pointing Dec	27.447605	27.47344912150058	CCD I3 on	O2	Y
[deg] Pointing Roll	39.759470	39.91138493622699	CCD S0 on	N	N
[mm] SIM focus pos	-0.684267	-0.6828225247311905	CCD S1 on	N	N
[mm] SIM defocus	0	0.001444936568705701	CCD S2 on	Y	Y
[mm] SIM translation stage pos	-190.132523	-190.1425803651734	CCD S3 on	Y	Y
[mm] SIM translation stage offset	0	0.01005778216563158	CCD S4 on	N	N
[s] Observation start time (MET)	406379223.184000	406378083.94905	CCD S5 on	N	N
Observation start date	2010-11-17T11:05:57	2010-11-17T10:48:03	Number of optional ACIS chips dropped	0	0
[s] Observation end time (MET)	406387223.184000	406388432.86208	On-chip summing requested	N	N
Observation end date	2010-11-17T13:19:17	2010-11-17T13:40:32	Subarray requested	NONE	NONE
Read mode	TIMED	TIMED	Alternating exposures requested	N	N
			[s] Primary exposure time	0.000000	3.1

## 2.3 Aspect





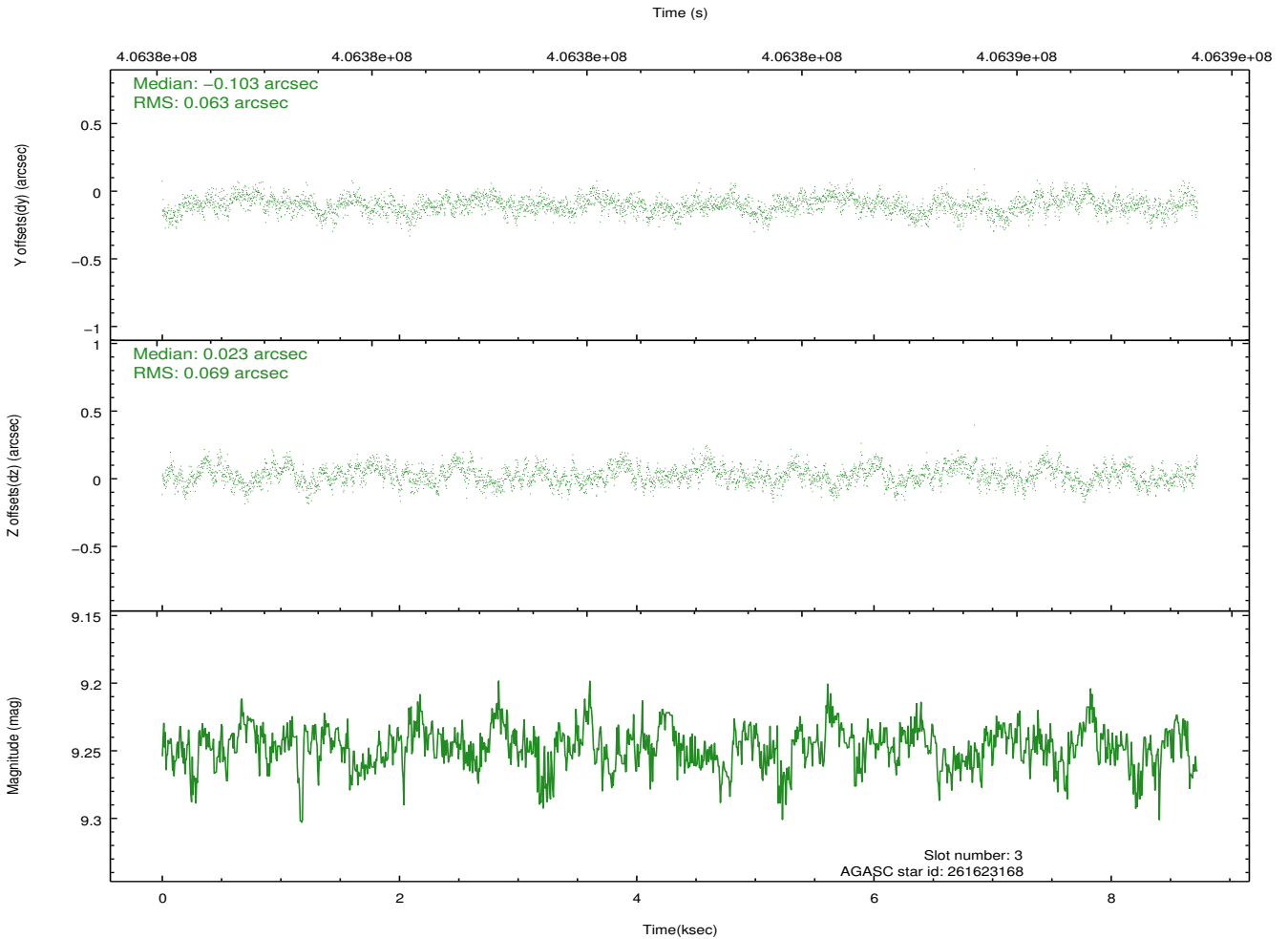
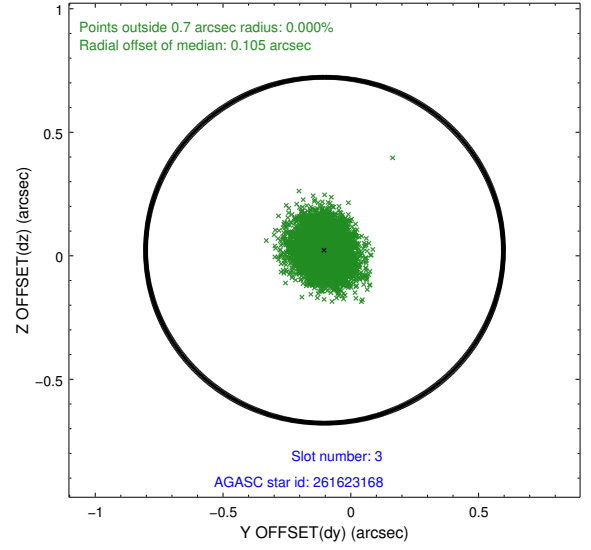
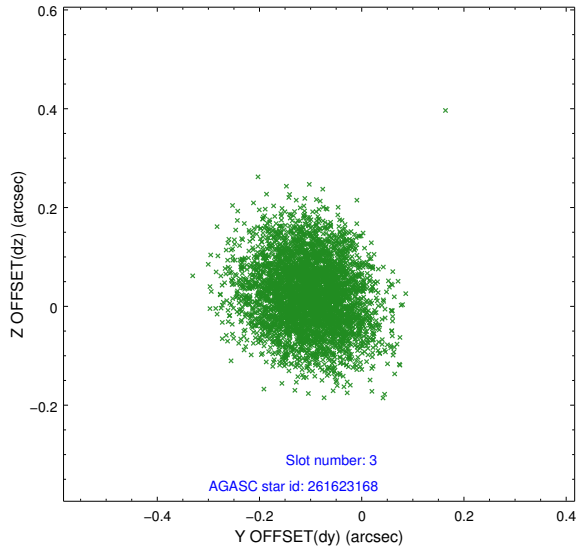
### Slot Statistics

slot	status	id	mag	n_pts	med_dy	med_dz	dr1	dr2	ra	dec	mean_y	mean_z
0	FID	ACIS-S-2	6.87	2130	0.000	-0.026	0.006	0.010	0.000000	0.000000	-769.06	-1740.03
1	FID	ACIS-S-5	7.00	2130	-0.067	0.012	0.006	0.011	0.000000	0.000000	-1822.47	161.36
2	FID	ACIS-S-6	7.11	2130	0.041	0.022	0.005	0.009	0.000000	0.000000	391.99	805.91
3	GUIDE	261623168	9.25	4255	-0.103	0.023	0.101	0.160	198.206676	27.353667	879.92	-1168.11
4	GUIDE	261628344	9.66	4253	0.003	0.037	0.209	0.303	198.349397	27.491813	1548.50	-1074.85
5	GUIDE	261629320	9.54	4248	-0.010	-0.184	0.121	0.199	197.864368	27.582525	563.62	163.34
6	GUIDE	261633728	8.73	4258	0.069	-0.209	0.087	0.143	197.179873	27.607020	-1056.42	1630.97
7	GUIDE	261628312	8.76	4256	0.047	0.330	0.100	0.162	198.197632	26.881162	-226.09	-2460.41

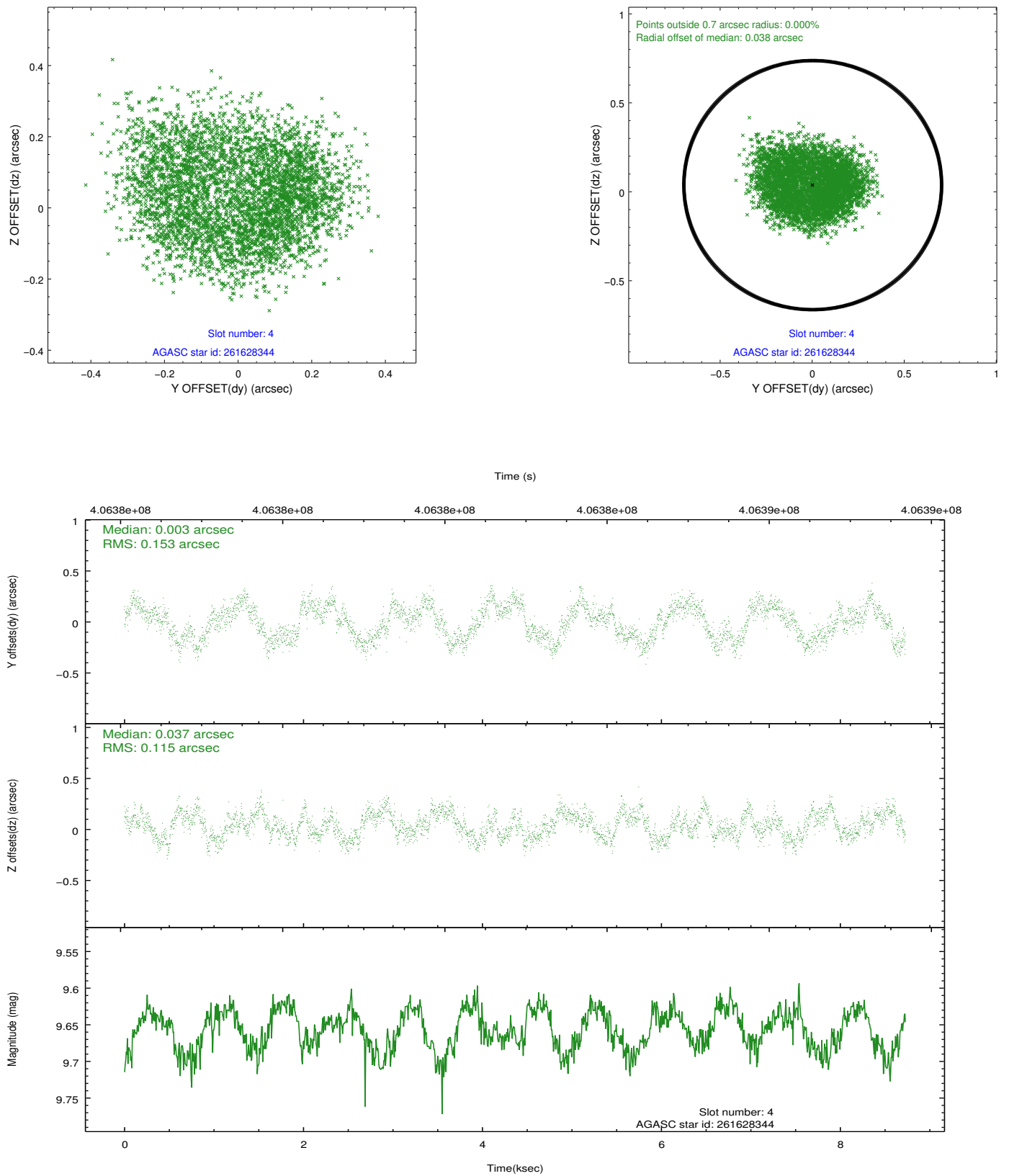
∞

## 2.4 Star Slots

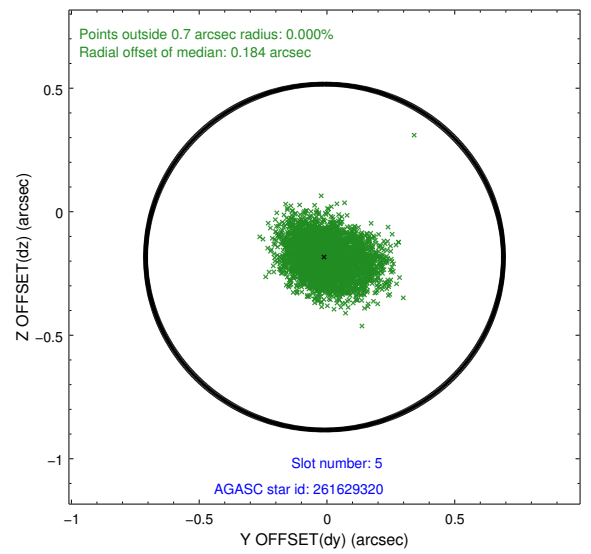
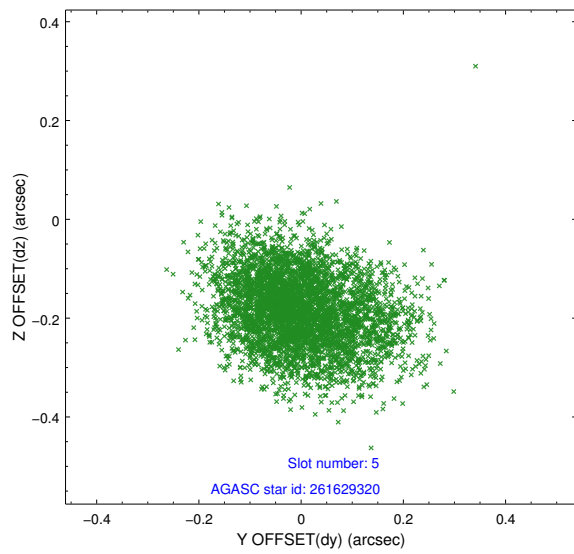
### 2.4.1 Slot 3



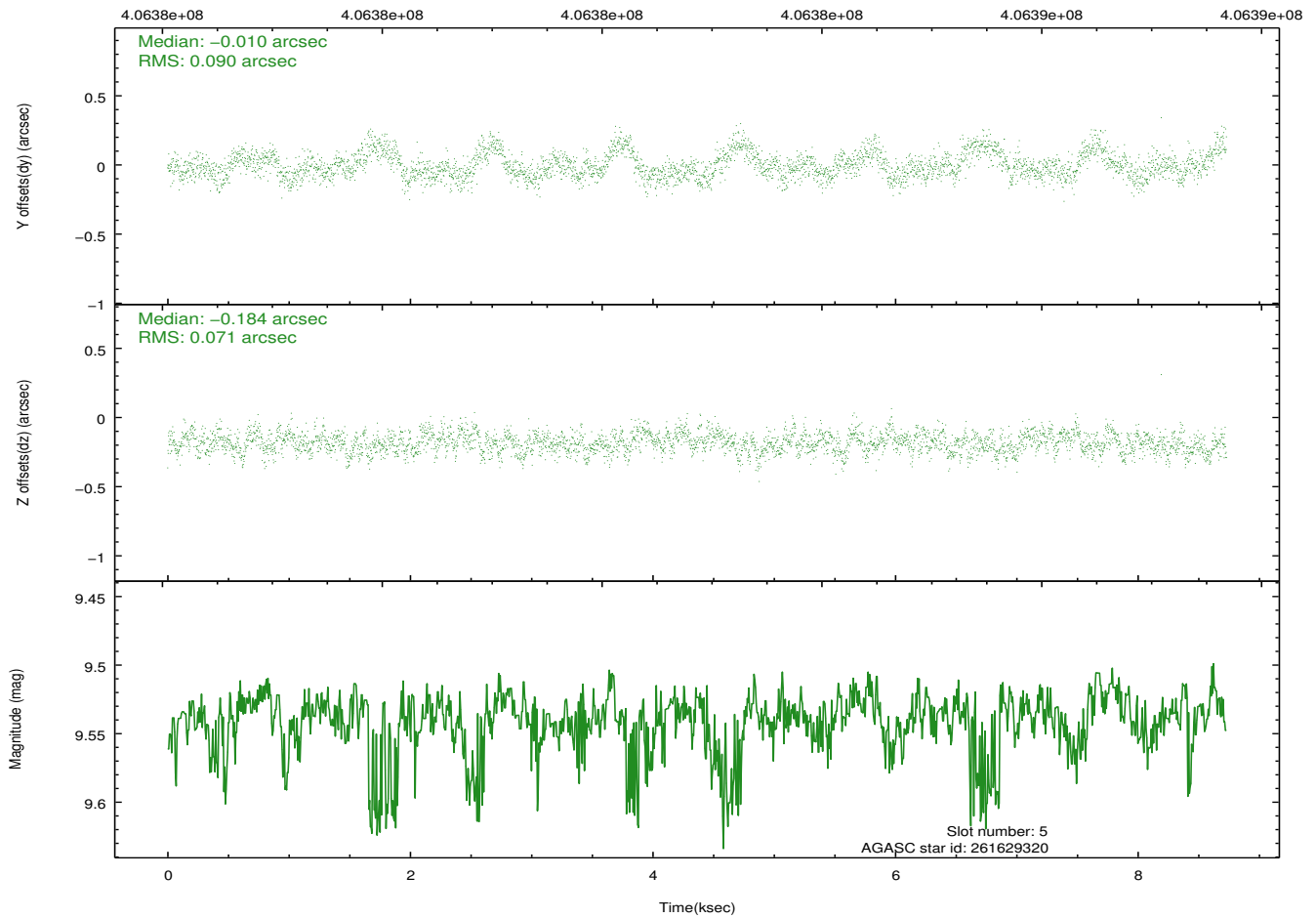
## 2.4.2 Slot 4



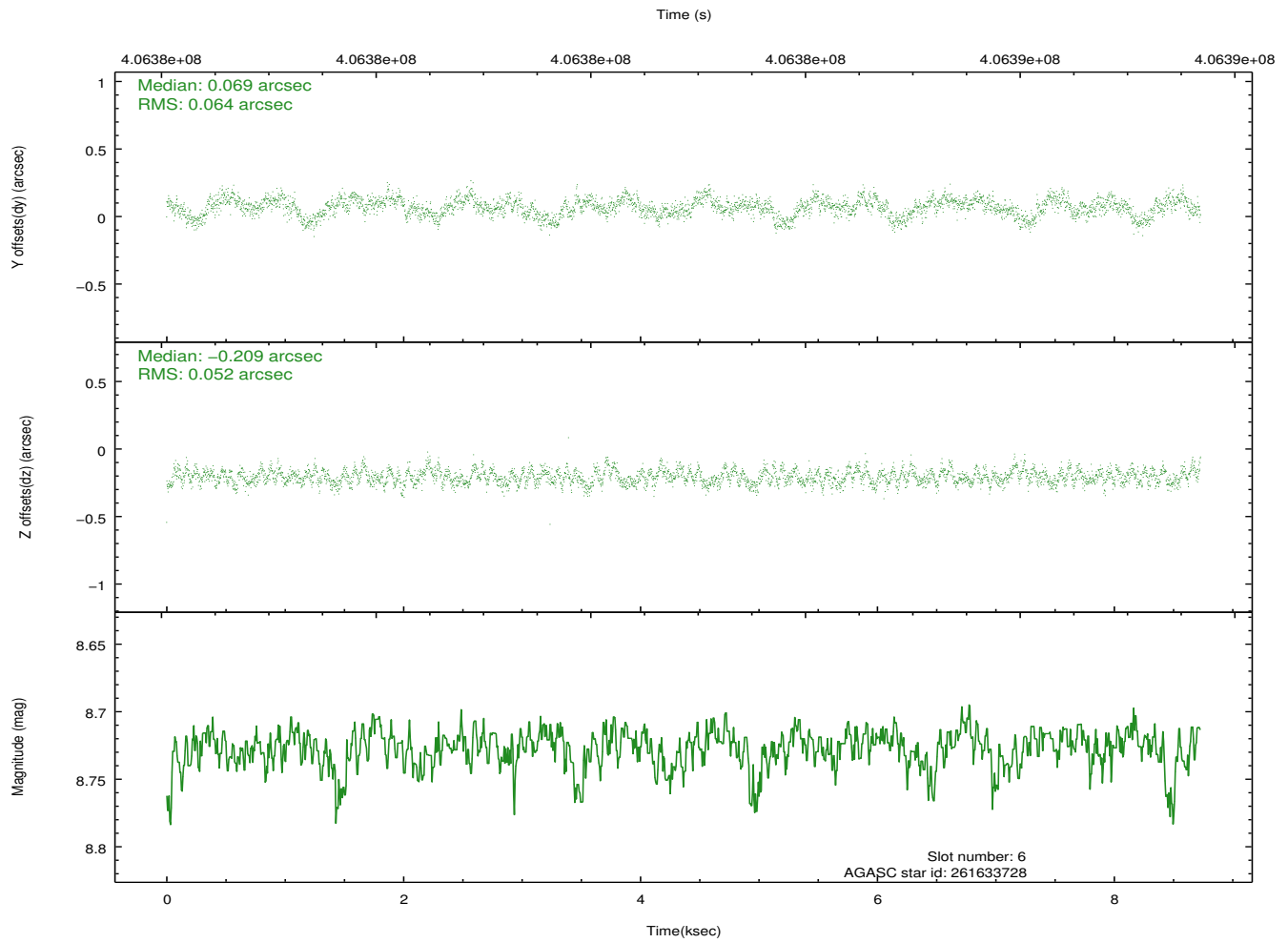
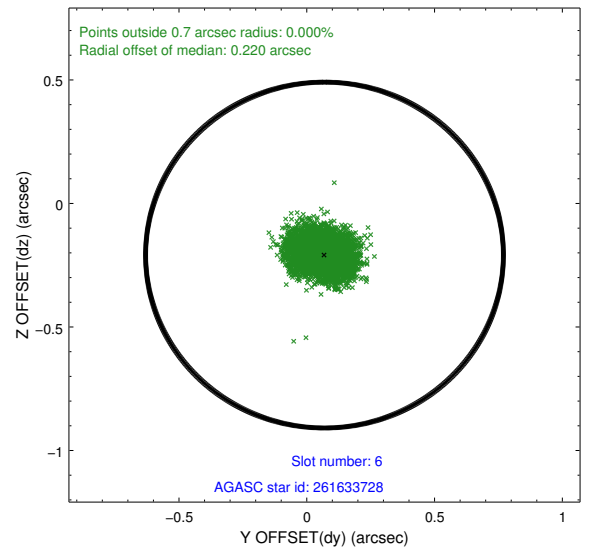
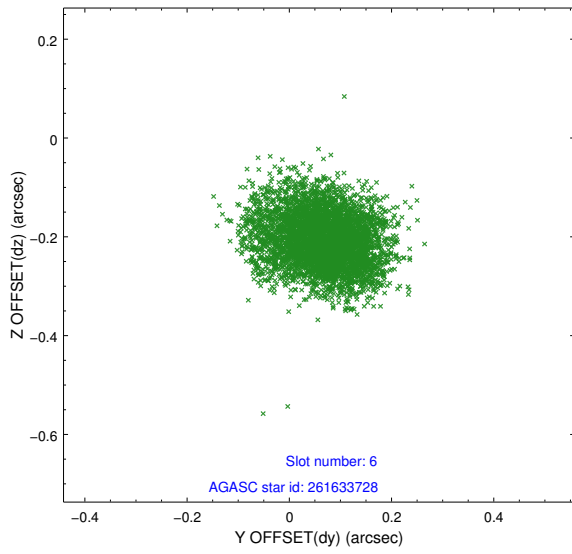
### 2.4.3 Slot 5



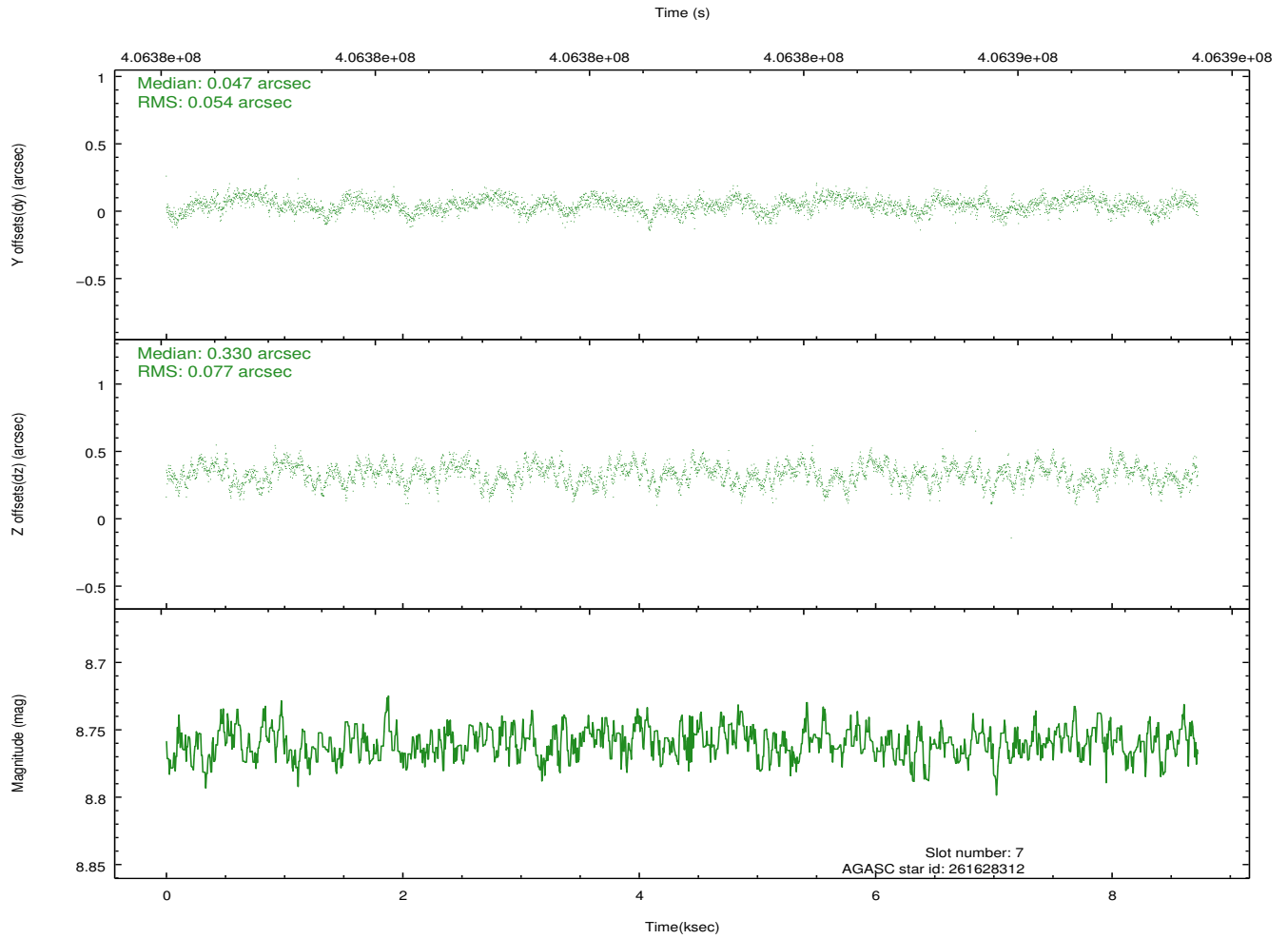
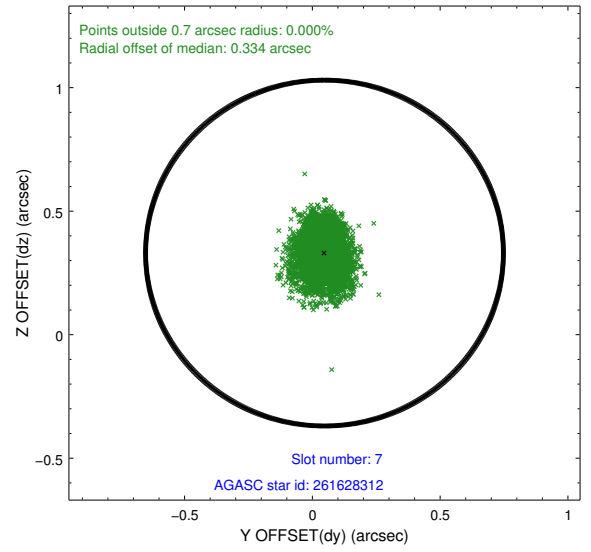
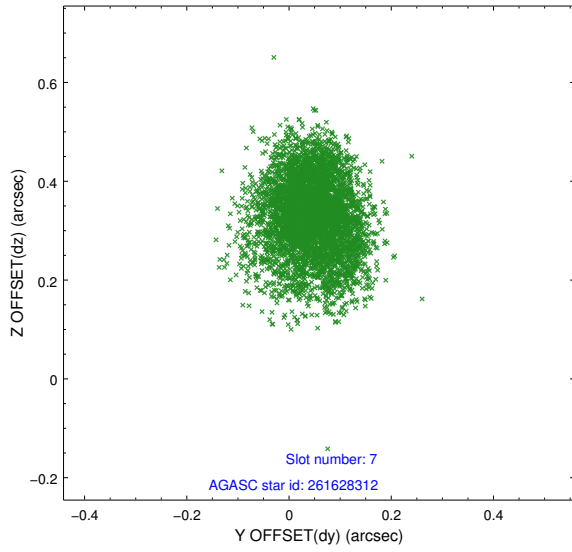
Time (s)



## 2.4.4 Slot 6

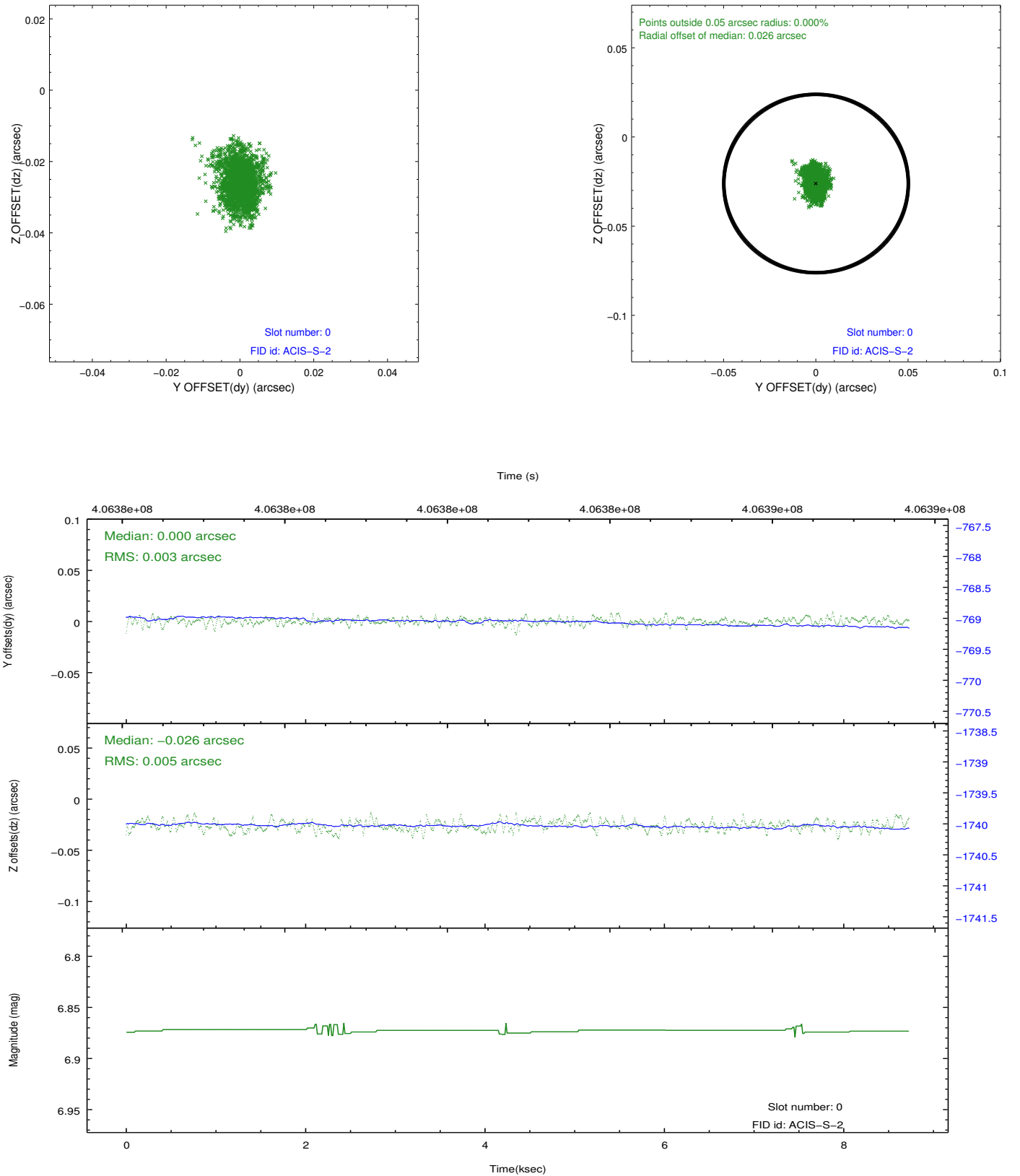


### 2.4.5 Slot 7

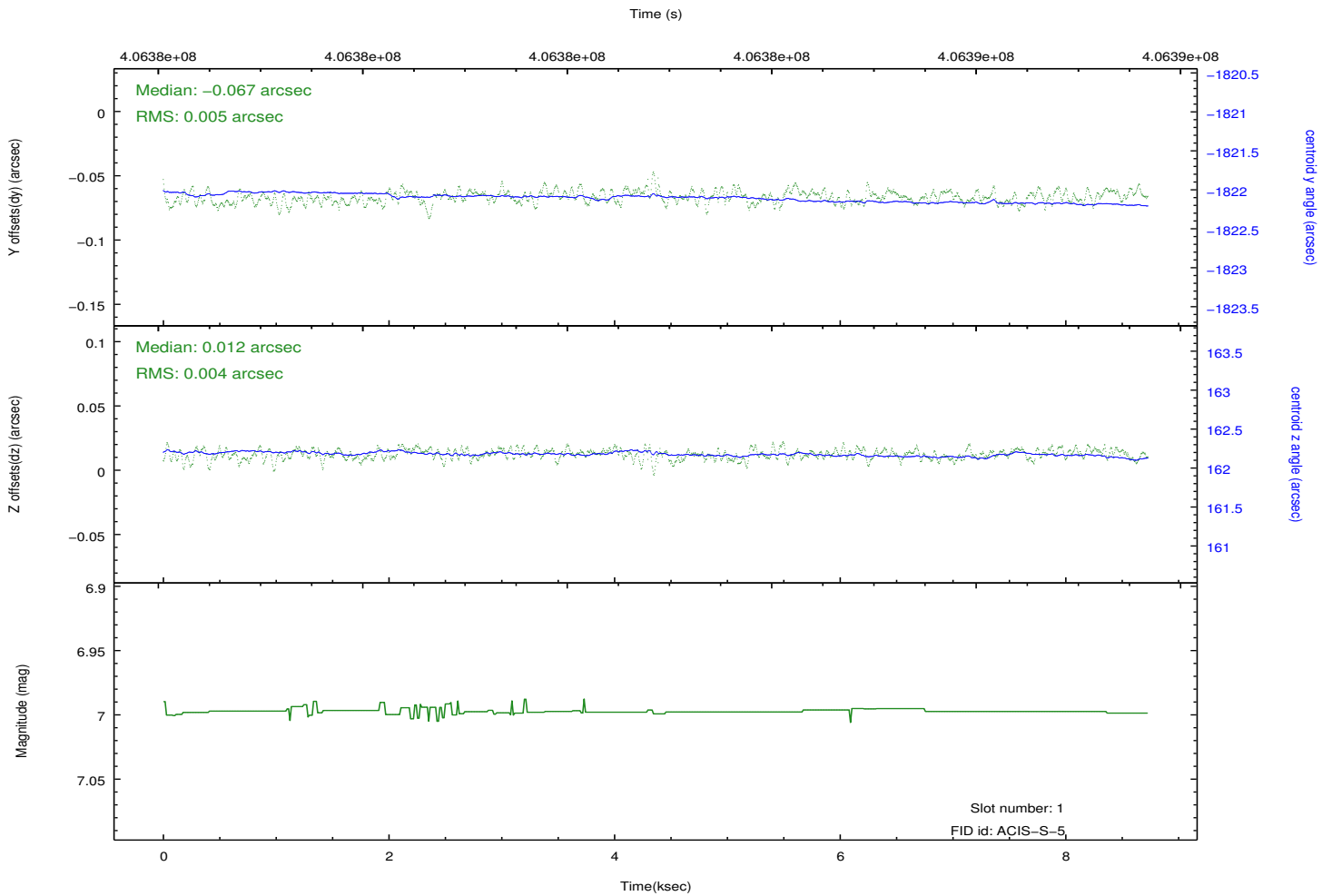
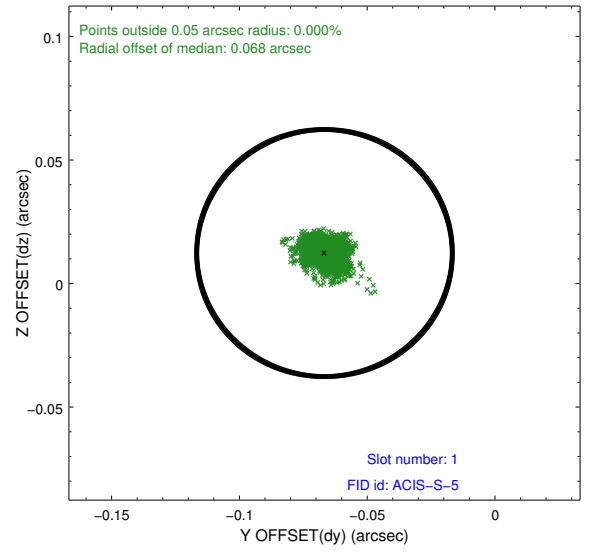
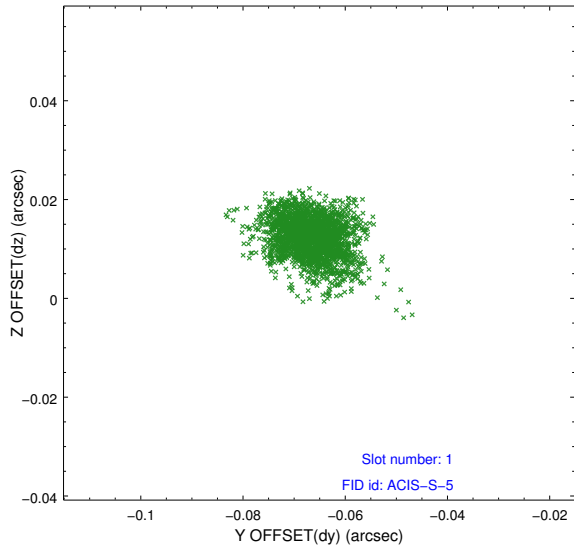


## 2.5 FID Slots

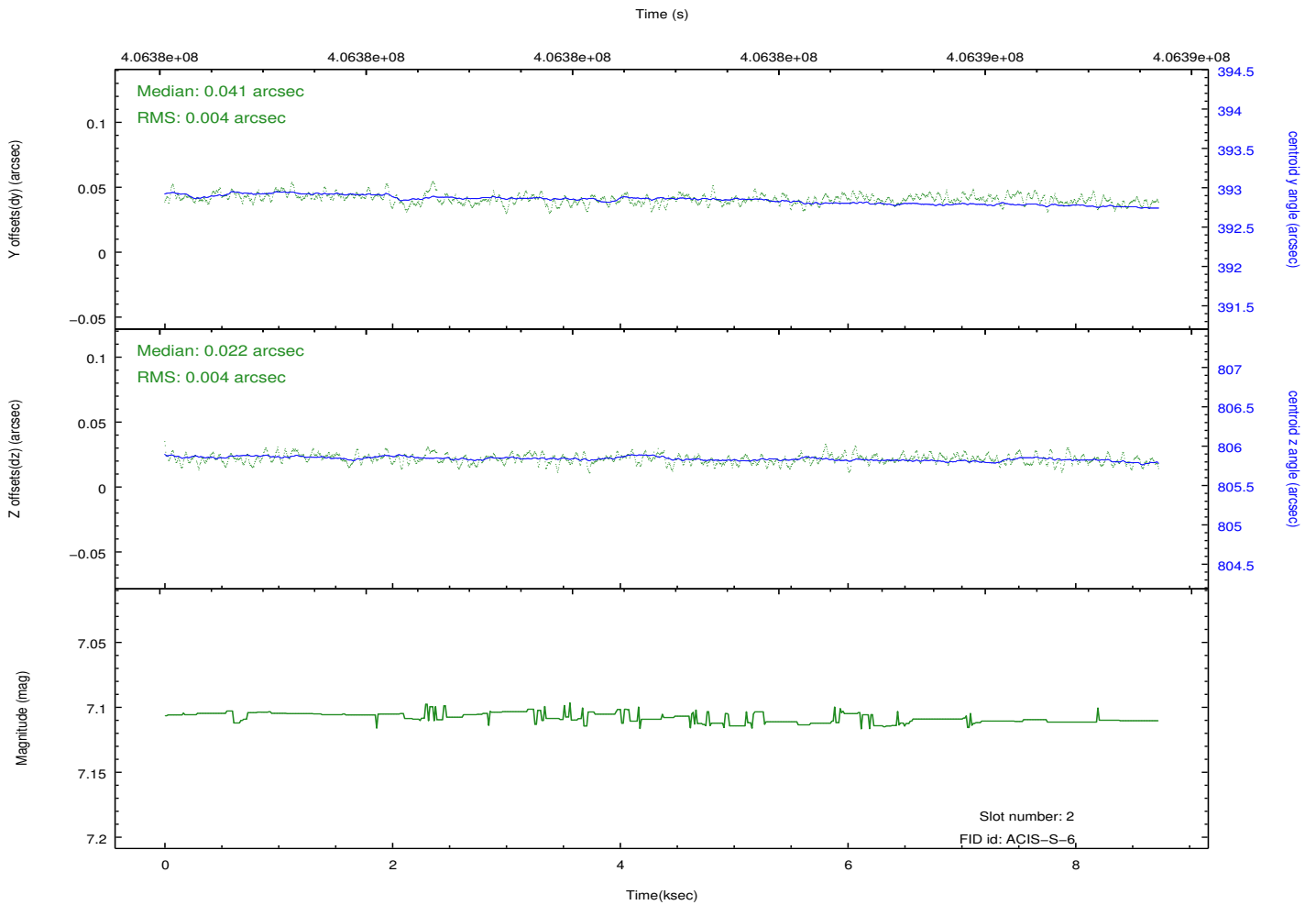
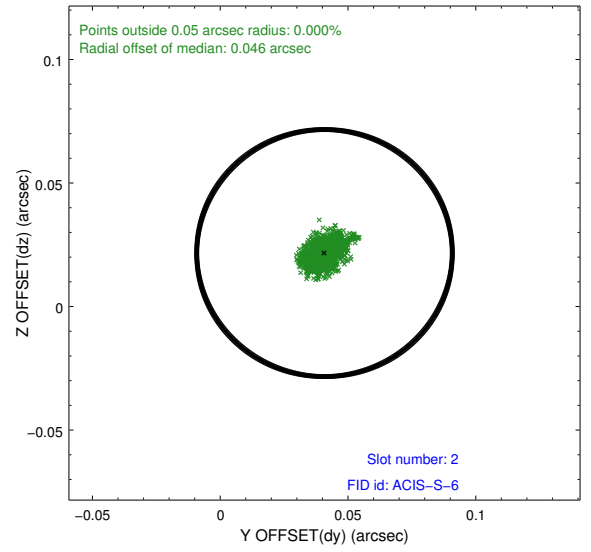
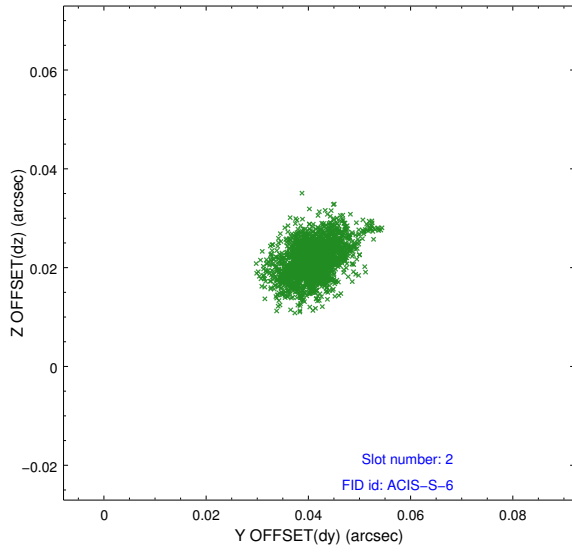
### 2.5.1 Slot 0



## 2.5.2 Slot 1



### 2.5.3 Slot 2



## A Summary

### A.1 Status

V&V Scientist	Jen Lauer
V&V Date (YYYY-MM-DD)	2012.07.16
V&V Edition	1
V&V Disposition and Status	OK
V&V Charge Time	8.0538000619411

### A.2 Comments