

V&V Reference Report

L2 ASCDS Version : 8.4.5

Observation 13015 - L2 Version 2
Chandra X-Ray Center

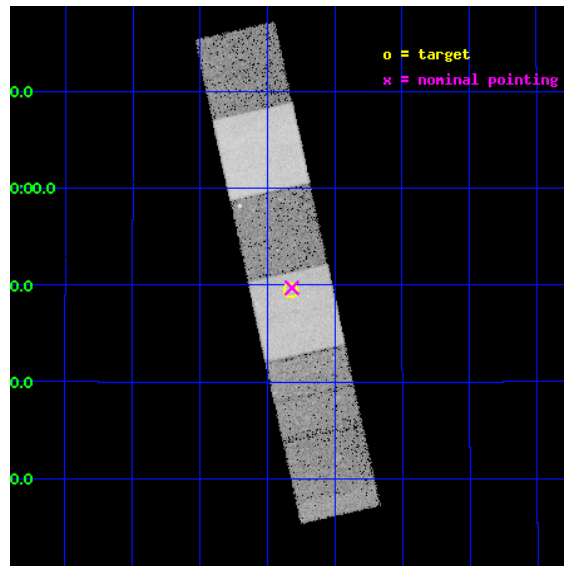
L2 Processing Date : Jul 8 2012

Contents

1	Front	2
2	OBI	3
2.1	OBI	3
2.1.1	Images	3
2.1.2	Bias	3
2.1.3	Parameters	4
2.1.4	Events	4
2.2	Compared Parameters	5
2.3	Aspect	6
2.4	Star Slots	9
2.4.1	Slot 3	9
2.4.2	Slot 4	10
2.4.3	Slot 5	11
2.4.4	Slot 6	12
2.4.5	Slot 7	13
2.5	FID Slots	14
2.5.1	Slot 0	14
2.5.2	Slot 1	15
2.5.3	Slot 2	16
A	Summary	17
A.1	Status	17
A.2	Comments	17

1 Front

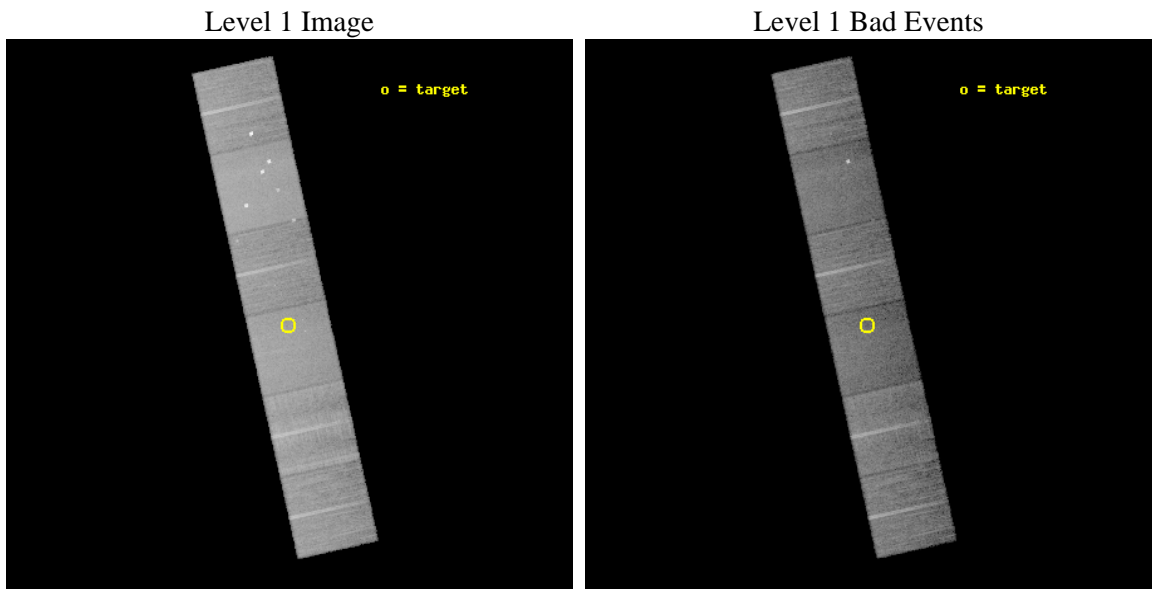
seq_num	600979	Sequence number
obs_id	13015	Observation id
title	Chandra Observations of Local Lyman Break Galaxy Analogs	Proposal
observer	Dr. Antara Basu-Zych	Principal investigator
object	J080619.5+194927.3	Source name
dtycycle	0	
cycle	P	events from which exps? Prim/Second/Both
ra_targ	121.58125	Observer's specified target RA [deg]
dec_targ	19.82425	Observer's specified target Dec [deg]
ra_nom	121.57952486972	Nominal RA [deg]
dec_nom	19.828834432818	Nominal Dec [deg]
roll_nom	77.501596180182	Nominal Roll [deg]
revision	2	Processing version of data
ontime	20051.199925363	Sum of GTIs [s]
livetime	19797.299558525	Livetime [s]
ontime4	20047.958905101	Sum of GTIs [s]
ontime5	20051.199925363	Sum of GTIs [s]
ontime6	20051.199925363	Sum of GTIs [s]
ontime7	20051.199925363	Sum of GTIs [s]
ontime8	20051.199925363	Sum of GTIs [s]
ontime9	20047.958885193	Sum of GTIs [s]
l2events	227456	Number of level 2 events



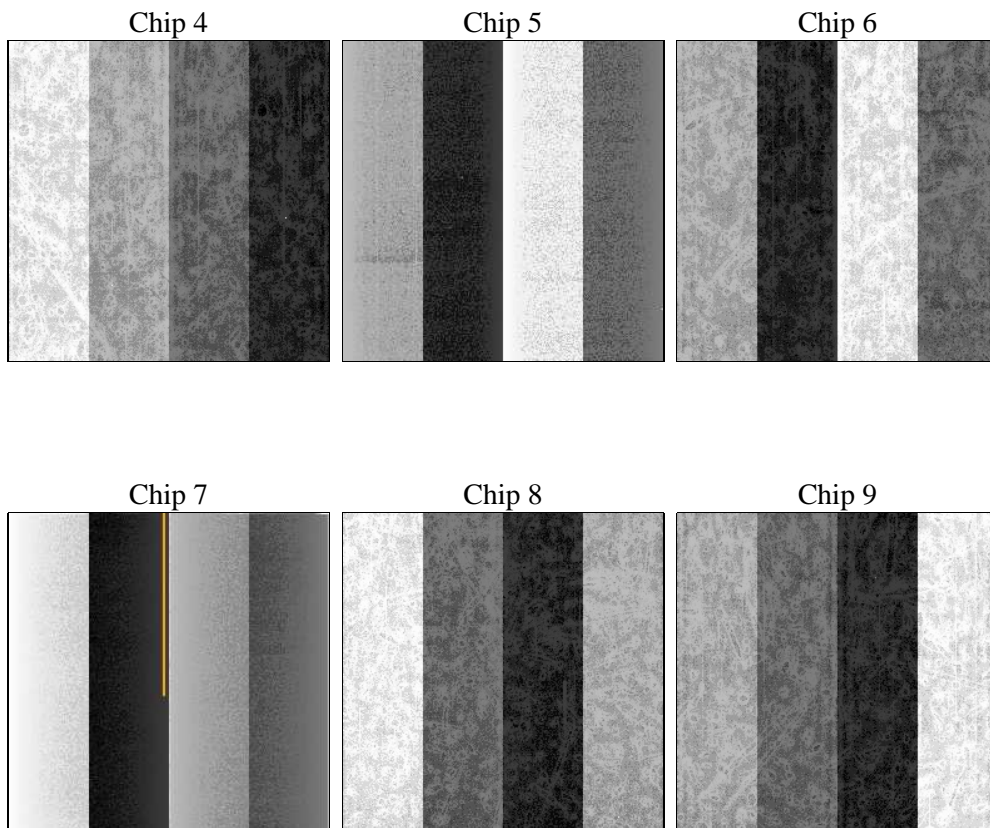
2 OBI

2.1 OBI

2.1.1 Images



2.1.2 Bias



2.1.3 Parameters

obi_num	0	Obi number	sched_exp_time	20000.000000	[s] Scheduled observation exposure time
ascdsver	8.4.5	Processing system revision	ontime	20051.199925363	Sum of GTIs [s]
caldbver	4.5.0	 	ontime4	20047.958905101	Sum of GTIs [s]
date	2012-07-08T05:13:08	Date and time of file creation	ontime5	20051.199925363	Sum of GTIs [s]
revision	2	Processing version of data	ontime6	20051.199925363	Sum of GTIs [s]
			ontime7	20051.199925363	Sum of GTIs [s]
			ontime8	20051.199925363	Sum of GTIs [s]
			ontime9	20047.958885193	Sum of GTIs [s]
			l1events	997243	Number of level 1 events

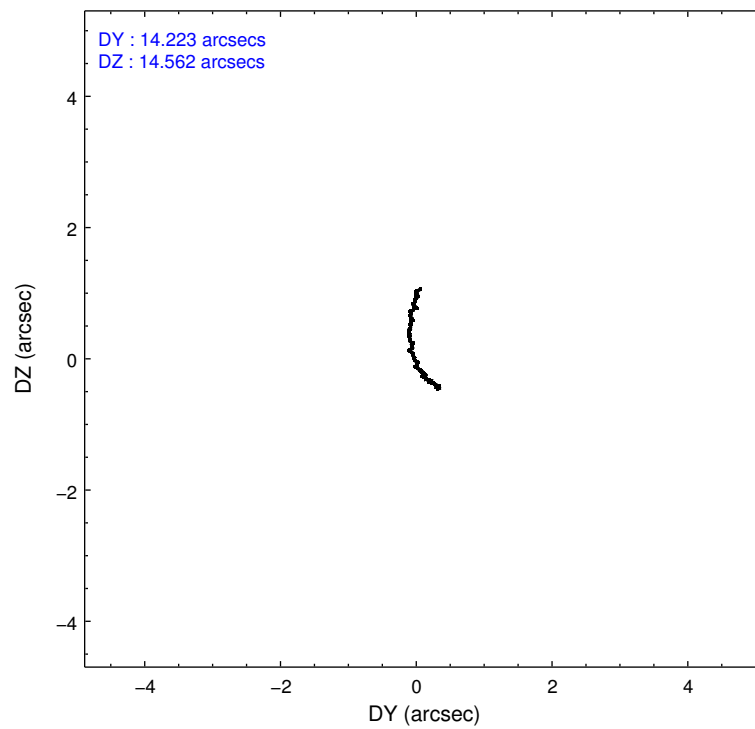
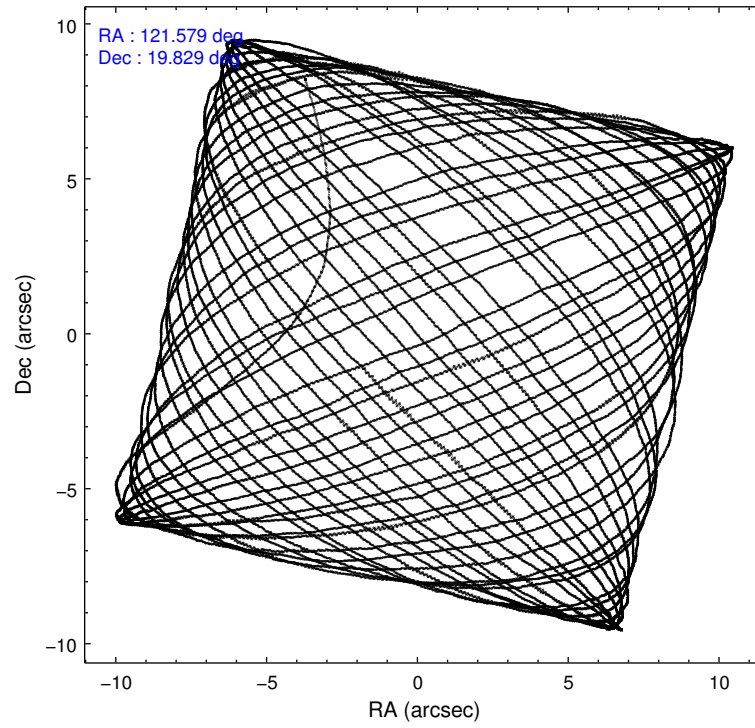
2.1.4 Events

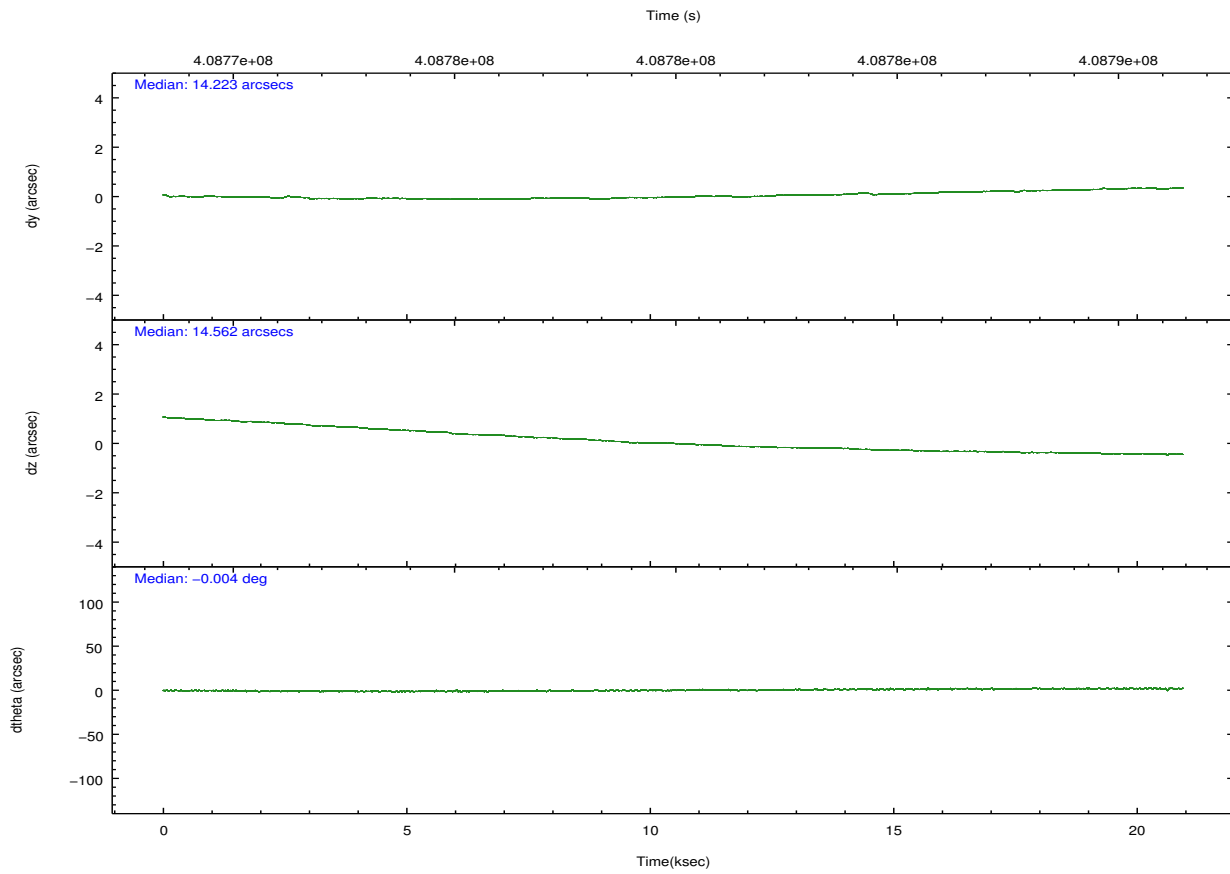
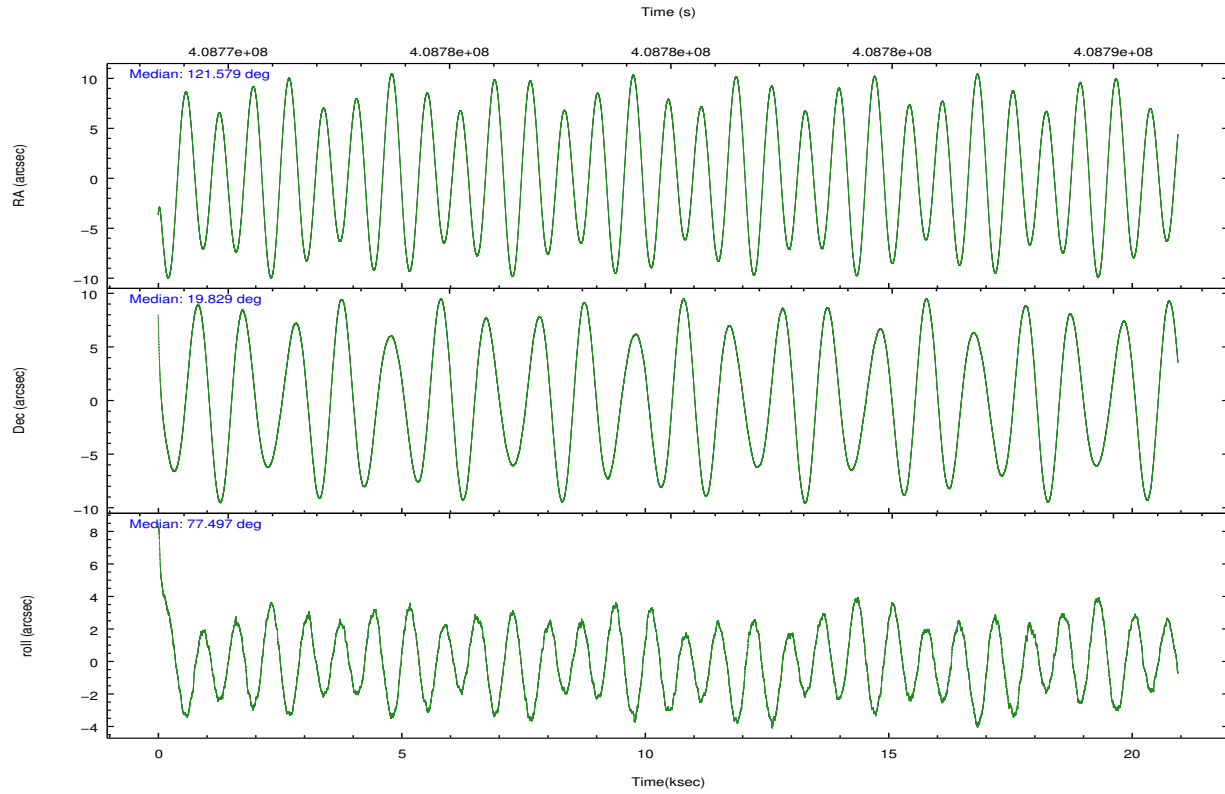
	ccd 4	ccd 5	ccd 6	ccd 7	ccd 8	ccd 9		ccd 4	ccd 5	ccd 6	ccd 7	ccd 8	ccd 9
level 1 events	158419	217411	139128	169146	176920	136219	grade 0 events	11604	15434	5780	6971	13605	6089
rejected events	136762	107656	123185	93019	130145	119680		7%	7%	4%	4%	7%	4%
rejected %	86%	49%	88%	54%	73%	87%	grade 1 events	180	577	80	251	146	99
								0%	0%	0%	0%	0%	0%
							grade 2 events	3994	31948	3506	15520	11347	3622
								2%	14%	2%	9%	6%	2%
							grade 3 events	1728	4513	1642	6818	4850	1687
								1%	2%	1%	4%	2%	1%
							grade 4 events	1613	3780	1573	6740	4470	1631
								1%	1%	1%	3%	2%	1%
							grade 5 events	6387	17488	6387	17910	9198	6932
								4%	8%	4%	10%	5%	5%
							grade 6 events	2723	54093	3443	40090	12504	3513
								1%	24%	2%	23%	7%	2%
							grade 7 events	130190	89578	116717	74846	120800	112646
								82%	41%	83%	44%	68%	82%

2.2 Compared Parameters

Parameter	Planned	Actual	Parameter	Planned	Actual
Instrument	ACIS	ACIS	Obspar format version number	7	7
Detector	ACIS-456789	ACIS-456789	Obspar file type	PREDICTED	ACTUAL
Grating	NONE	NONE	Obspar update status	NONE	UPDATED
Data mode	VFAINT	VFAINT	CCD I0 on	N	N
Observation mode	POINTING	POINTING	CCD I1 on	N	N
[deg] Pointing RA	121.588671	121.5795248697243	CCD I2 on	N	N
[deg] Pointing Dec	19.802869	19.8288344328179	CCD I3 on	N	N
[deg] Pointing Roll	77.341858	77.50159618018199	CCD S0 on	O3	Y
[mm] SIM focus pos	-0.684267	-0.6828225247311905	CCD S1 on	O2	Y
[mm] SIM defocus	0	0.001444936568705701	CCD S2 on	Y	Y
[mm] SIM translation stage pos	-190.132523	-190.1400660498719	CCD S3 on	Y	Y
[mm] SIM translation stage offset	0	0.00754346686406393	CCD S4 on	Y	Y
[s] Observation start time (MET)	408770412.184000	408768291.82228	CCD S5 on	O1	Y
Observation start date	2010-12-15T03:19:06	2010-12-15T02:44:51	Number of optional ACIS chips dropped	0	0
[s] Observation end time (MET)	408790412.184000	408791198.52346	On-chip summing requested	N	N
Observation end date	2010-12-15T08:52:26	2010-12-15T09:06:38	Subarray requested	NONE	NONE
Read mode	TIMED	TIMED	Alternating exposures requested	N	N
			[s] Primary exposure time	0.000000	3.2

2.3 Aspect



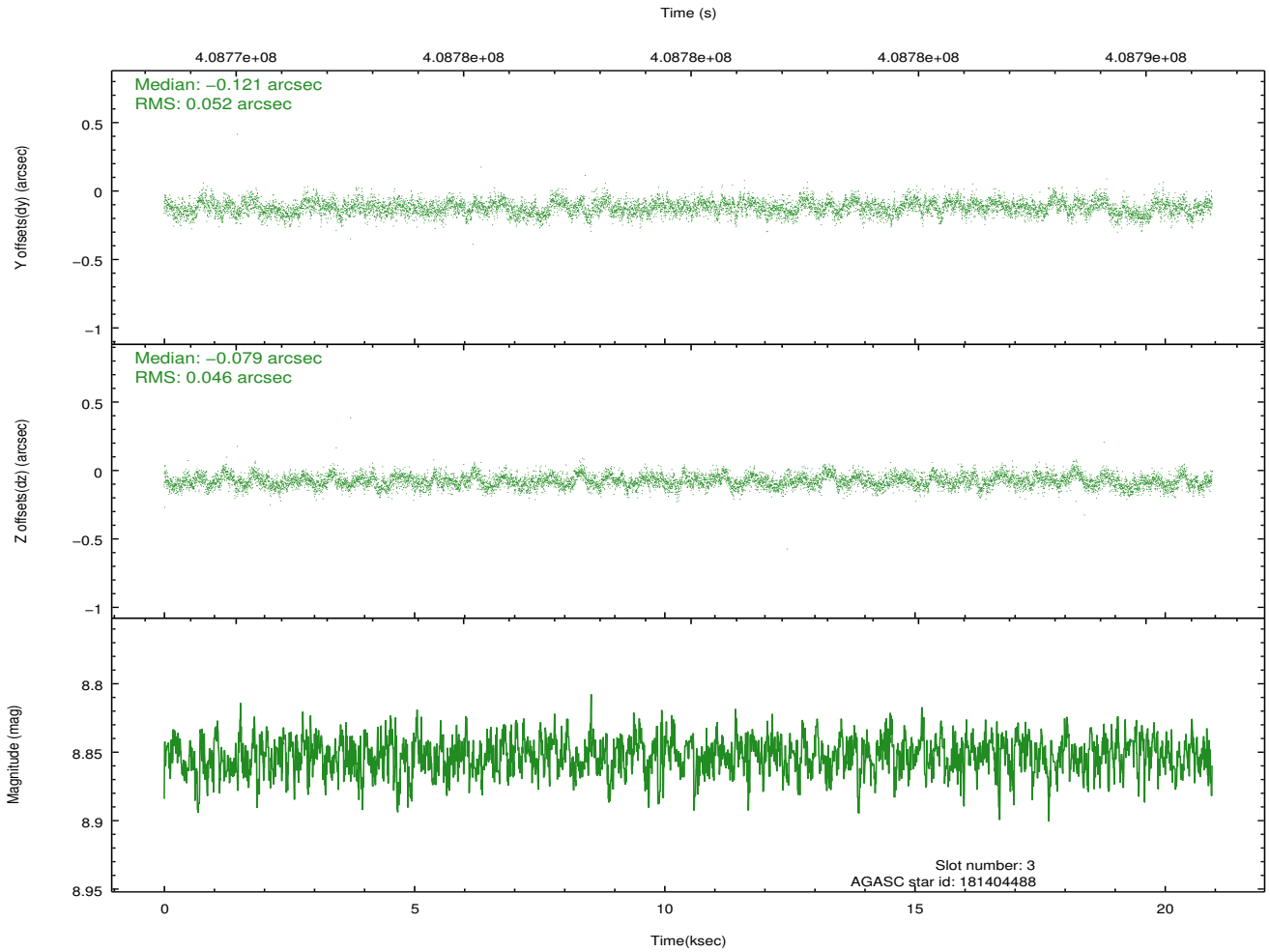
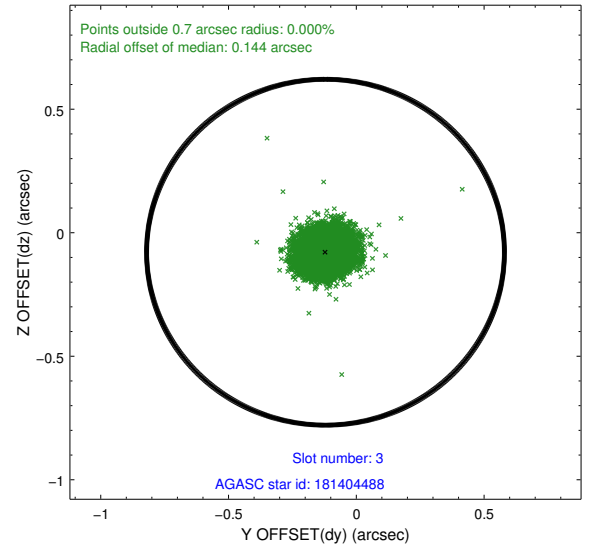
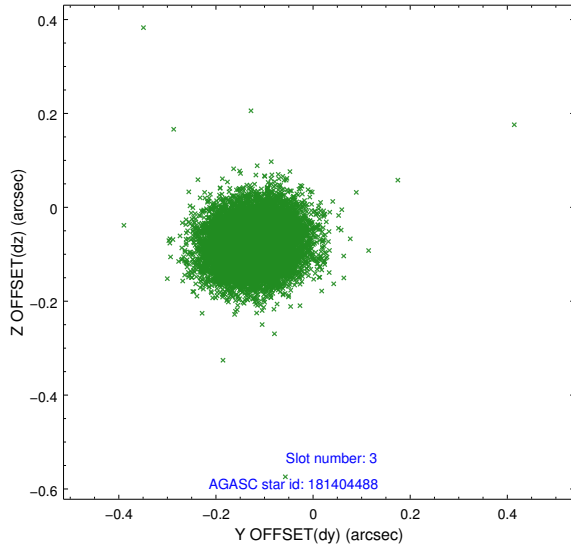


Slot Statistics

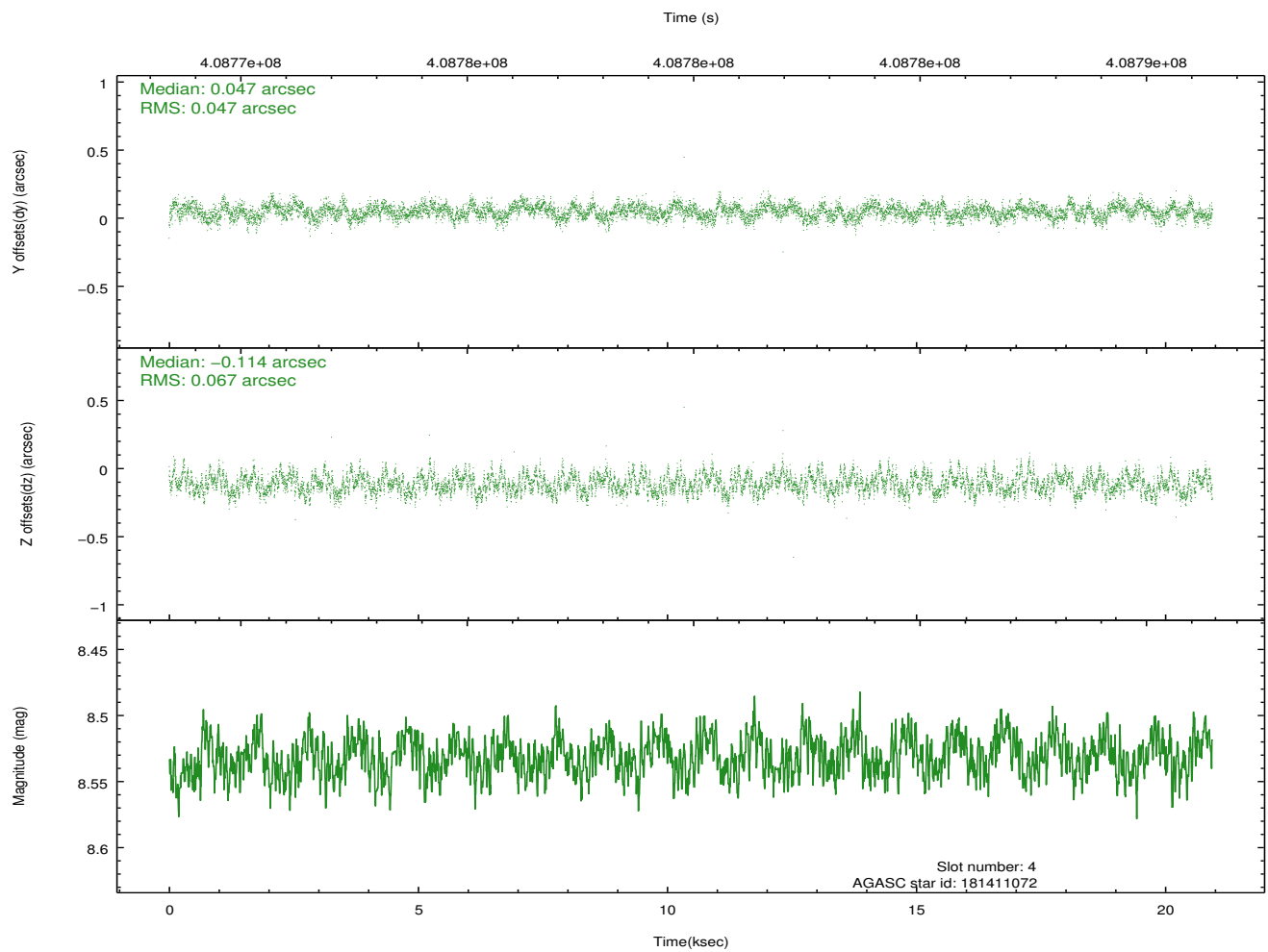
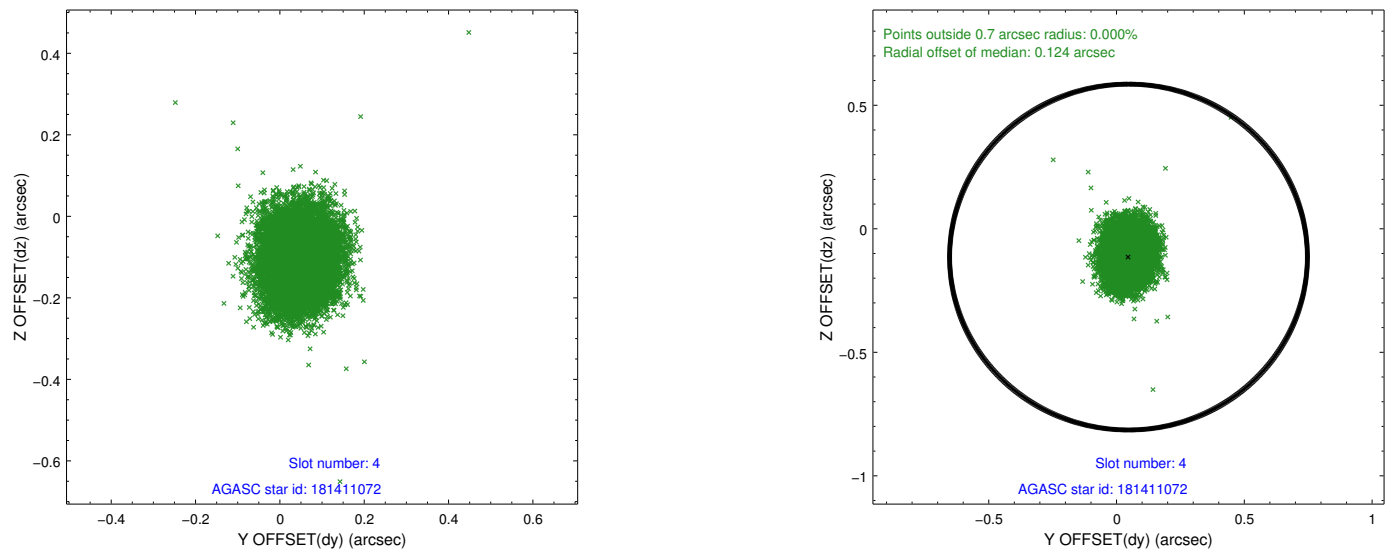
slot	status	id	mag	n_pts	med_dy	med_dz	dr1	dr2	ra	dec	mean_y	mean_z
0	FID	ACIS-S-2	6.88	5109	-0.072	-0.037	0.014	0.022	0.000000	0.000000	-767.28	-1736.09
1	FID	ACIS-S-4	6.96	5109	0.193	0.044	0.008	0.019	0.000000	0.000000	2146.17	172.31
2	FID	ACIS-S-5	6.99	5109	-0.153	0.002	0.013	0.021	0.000000	0.000000	-1820.00	166.11
3	GUIDE	181404488	8.85	10210	-0.121	-0.079	0.073	0.117	121.312206	20.512031	2287.25	1469.35
4	GUIDE	181411072	8.53	10213	0.047	-0.114	0.087	0.139	121.110559	19.797433	-371.81	1576.62
5	GUIDE	181411536	8.78	10210	-0.114	-0.197	0.085	0.138	121.055711	20.097720	643.25	1991.78
6	GUIDE	181412272	7.81	10218	0.009	0.135	0.070	0.111	121.858630	19.817658	252.71	-879.08
7	GUIDE	181543240	7.74	10210	0.179	0.260	0.068	0.105	122.036079	19.215936	-1726.98	-1946.53

2.4 Star Slots

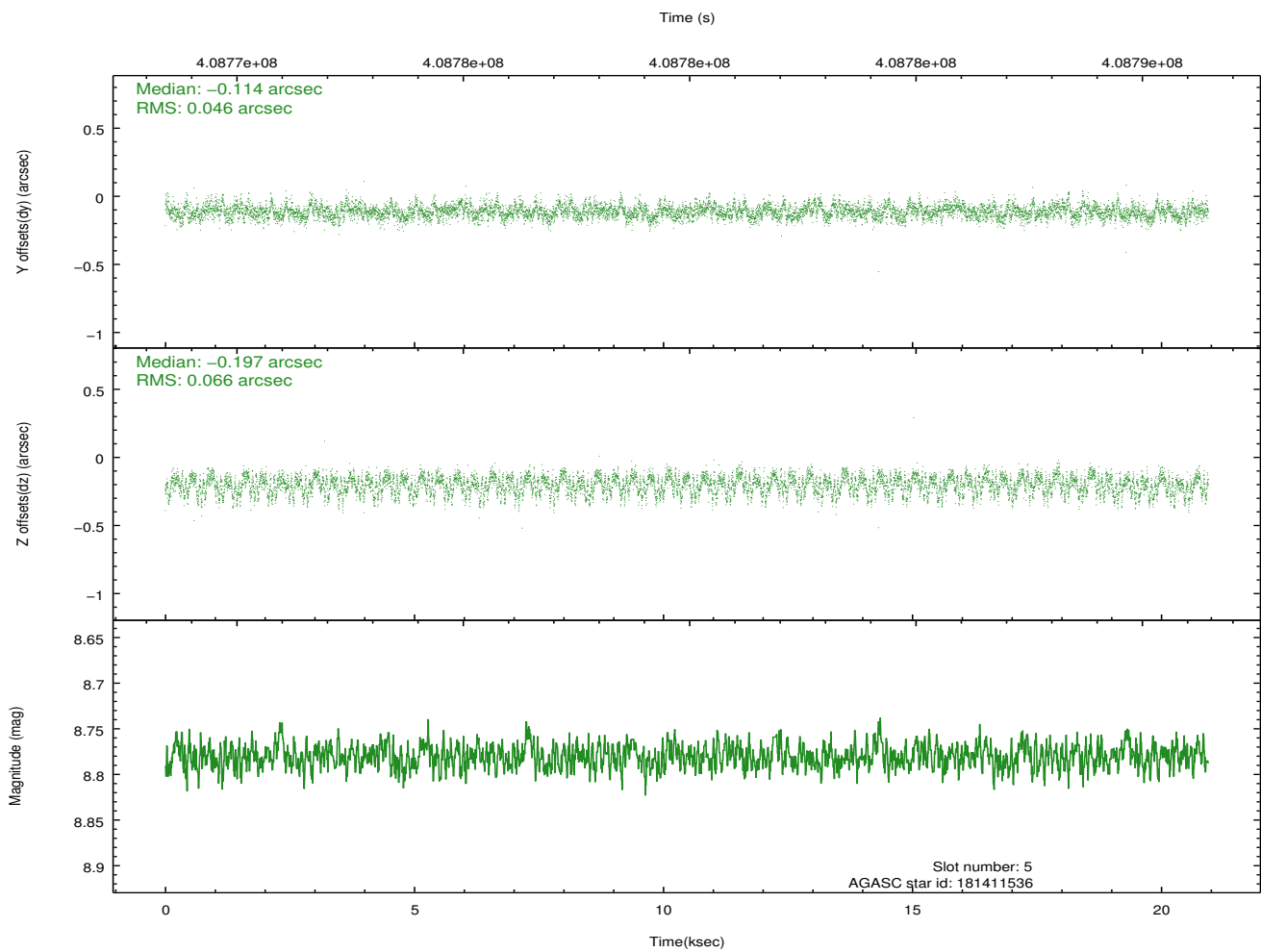
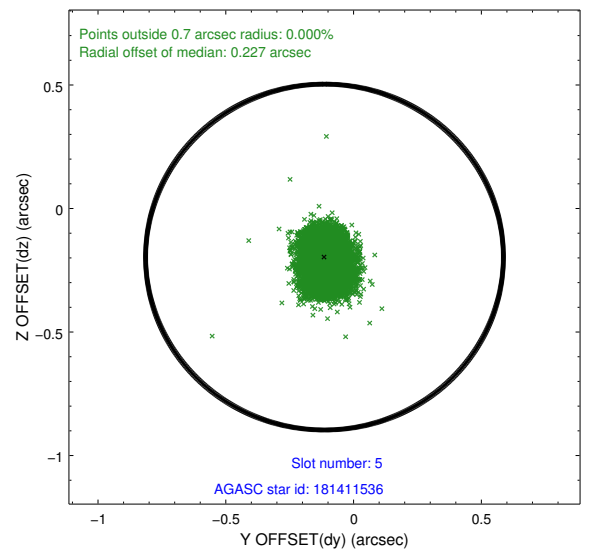
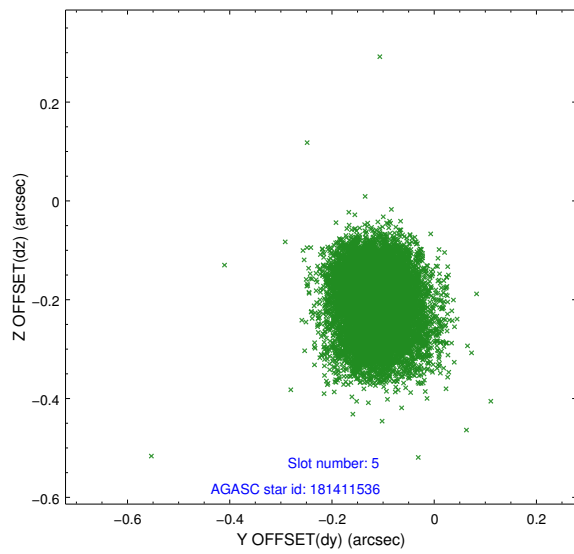
2.4.1 Slot 3



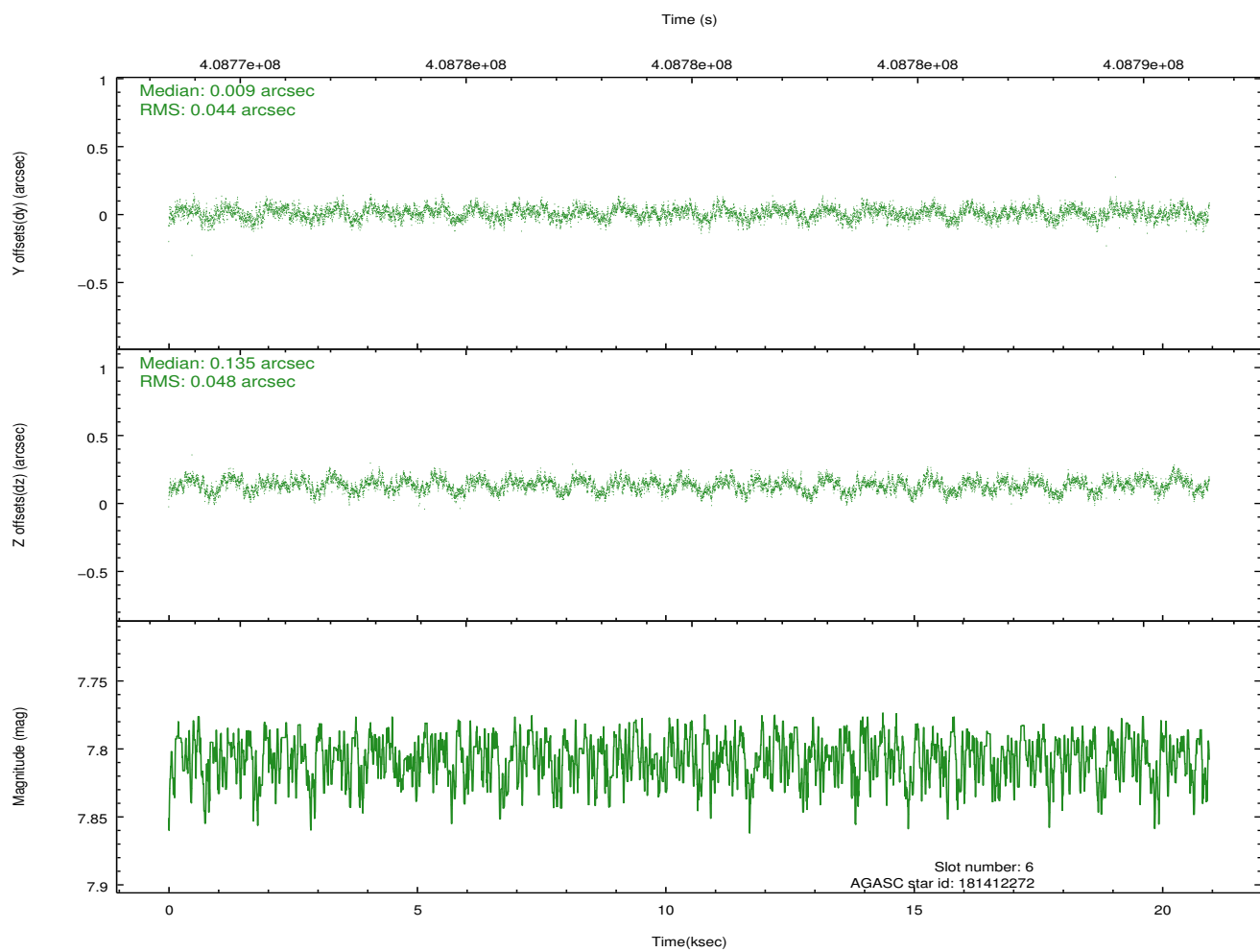
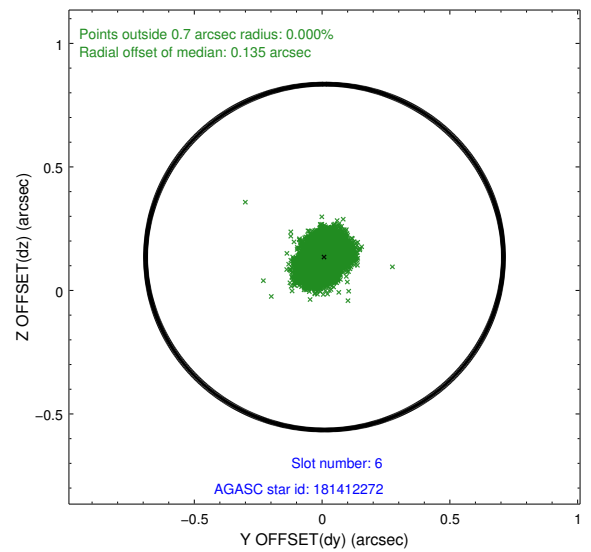
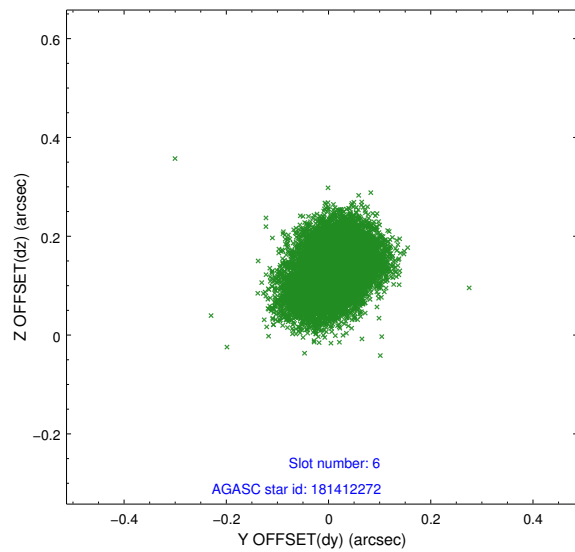
2.4.2 Slot 4



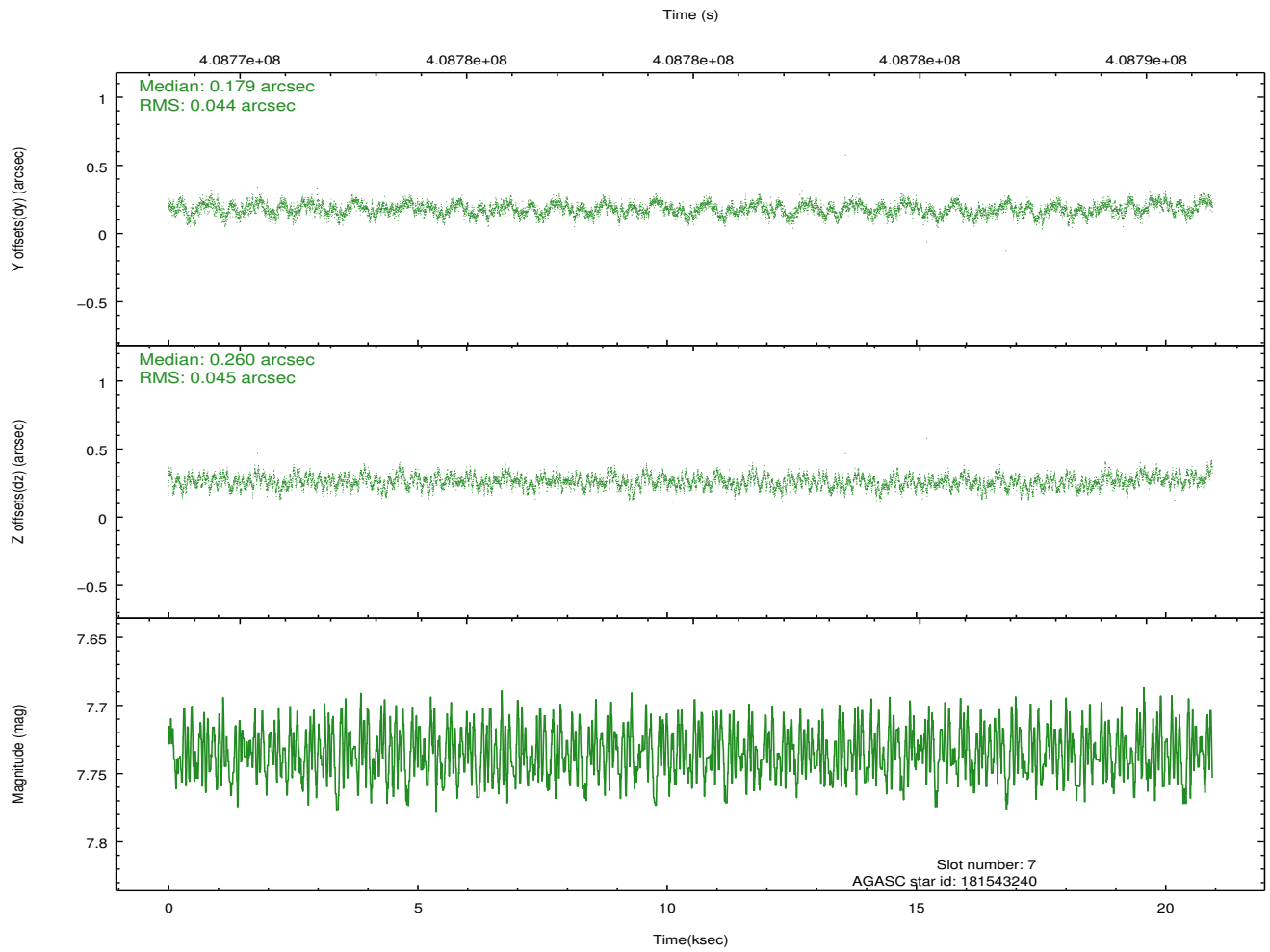
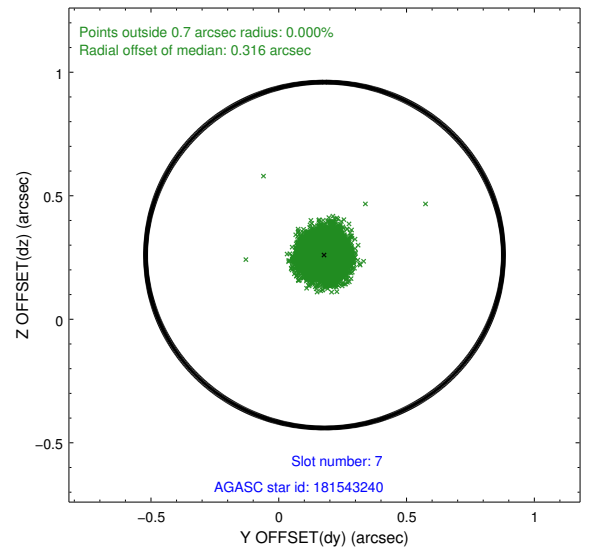
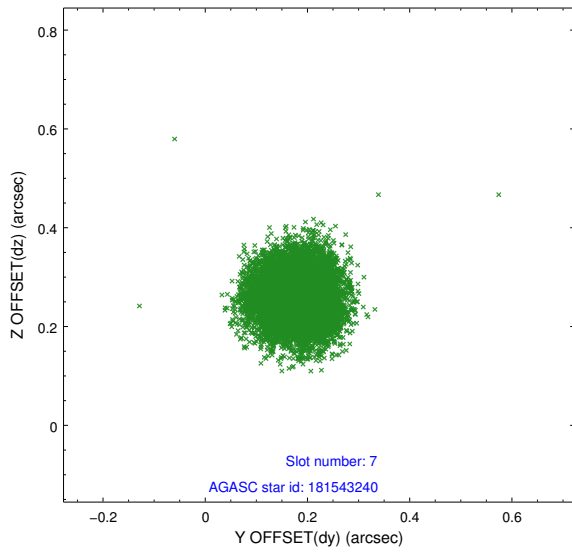
2.4.3 Slot 5



2.4.4 Slot 6

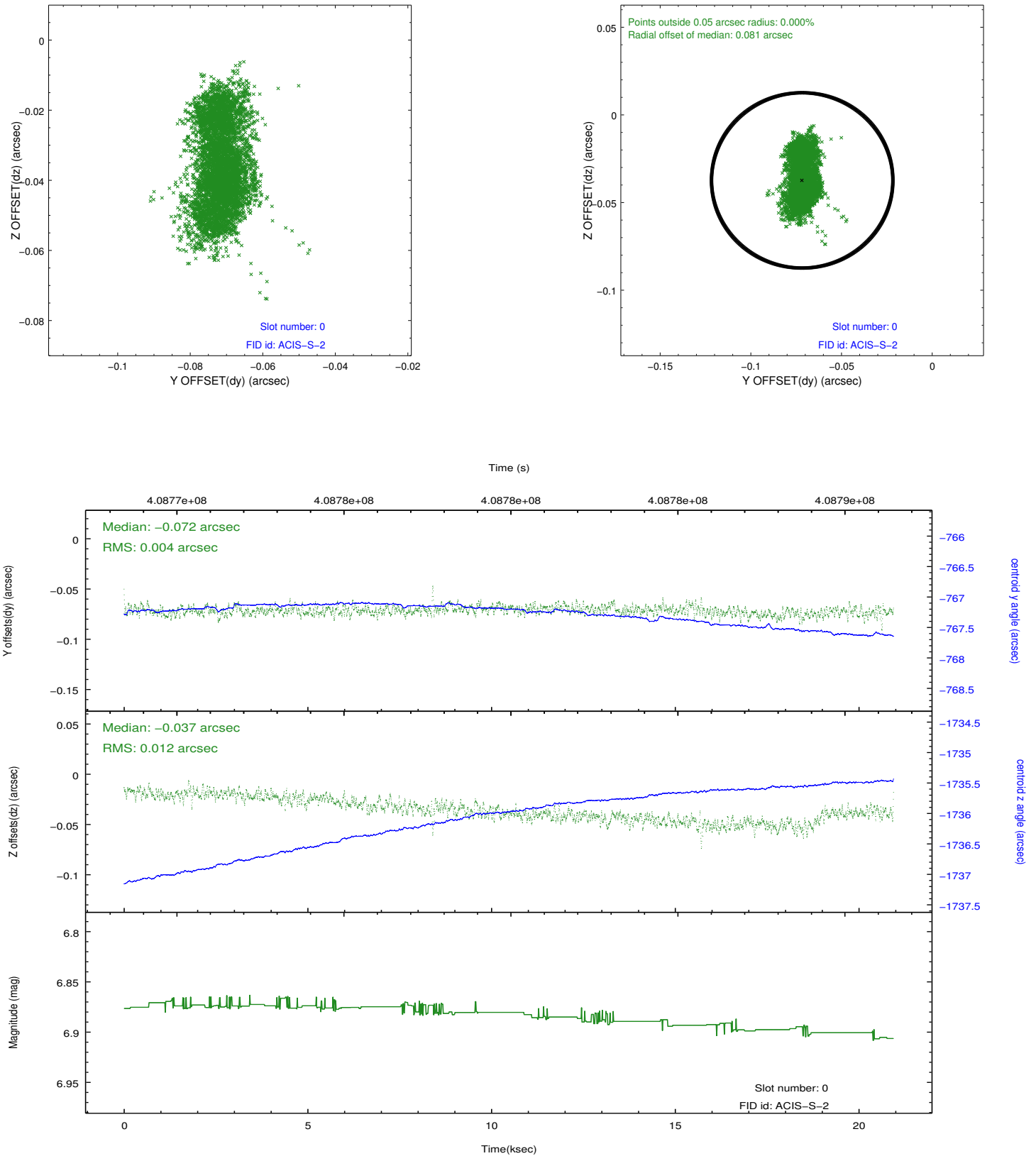


2.4.5 Slot 7

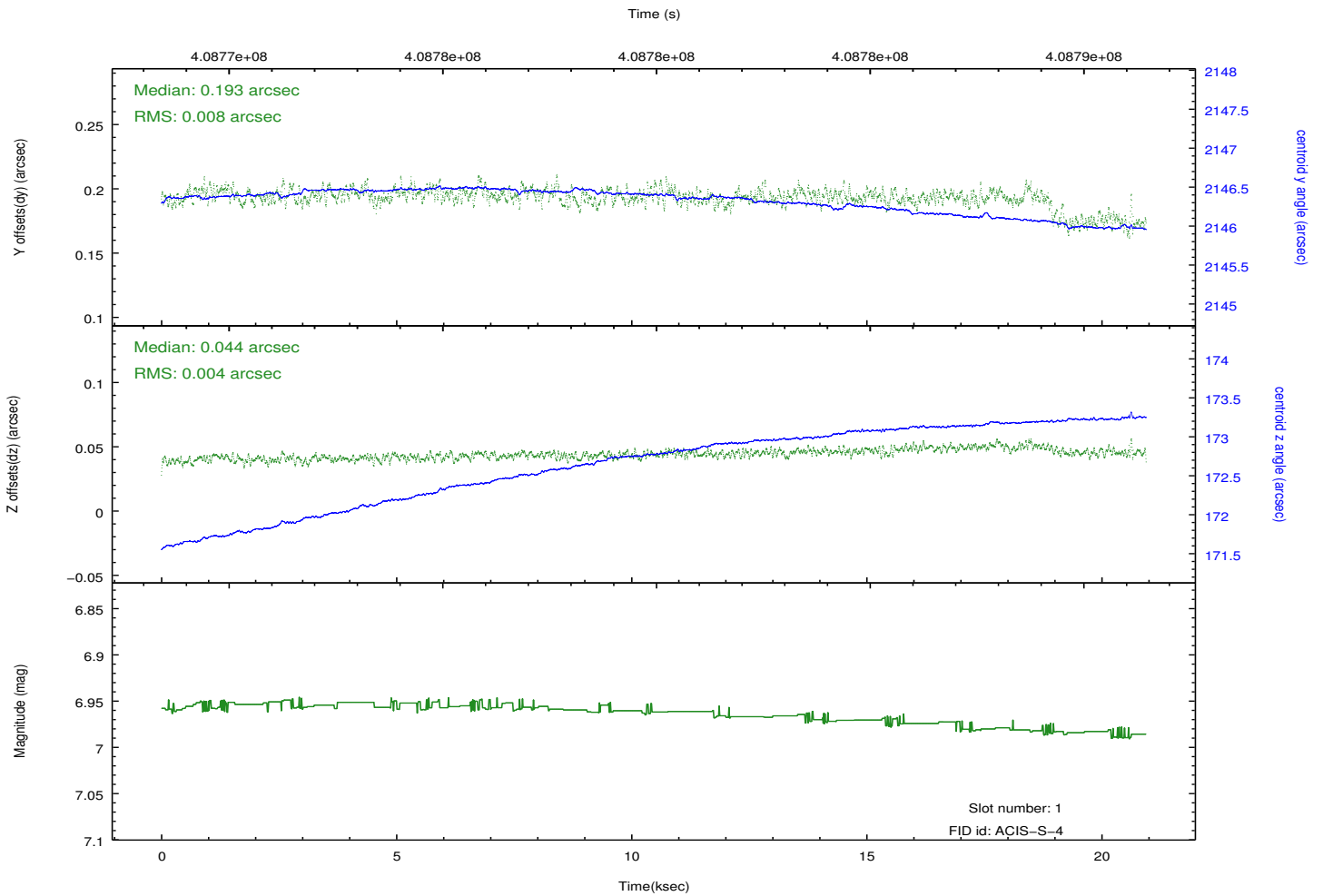
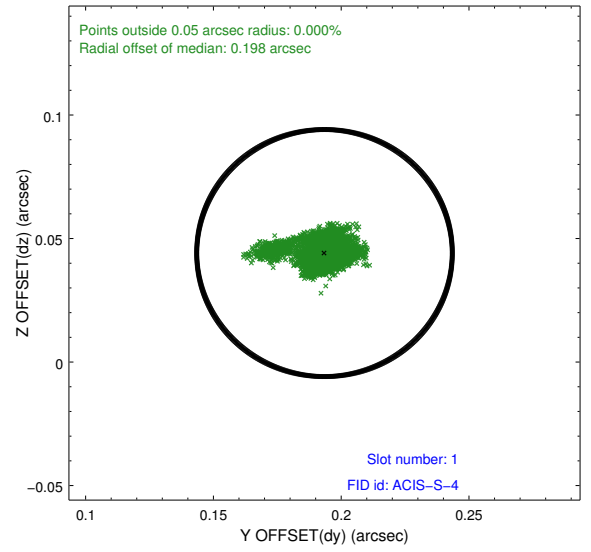
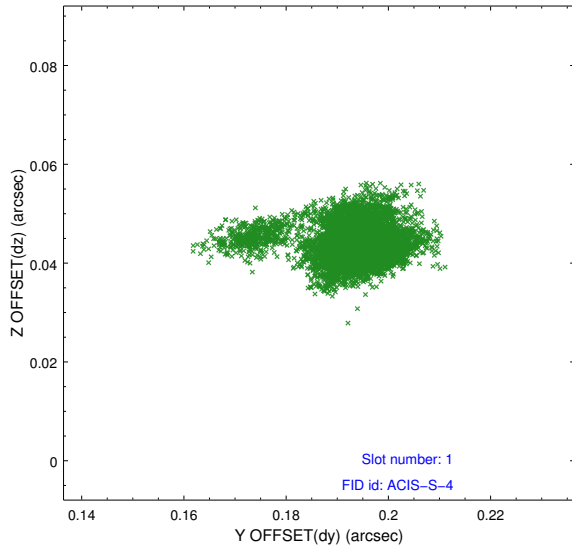


2.5 FID Slots

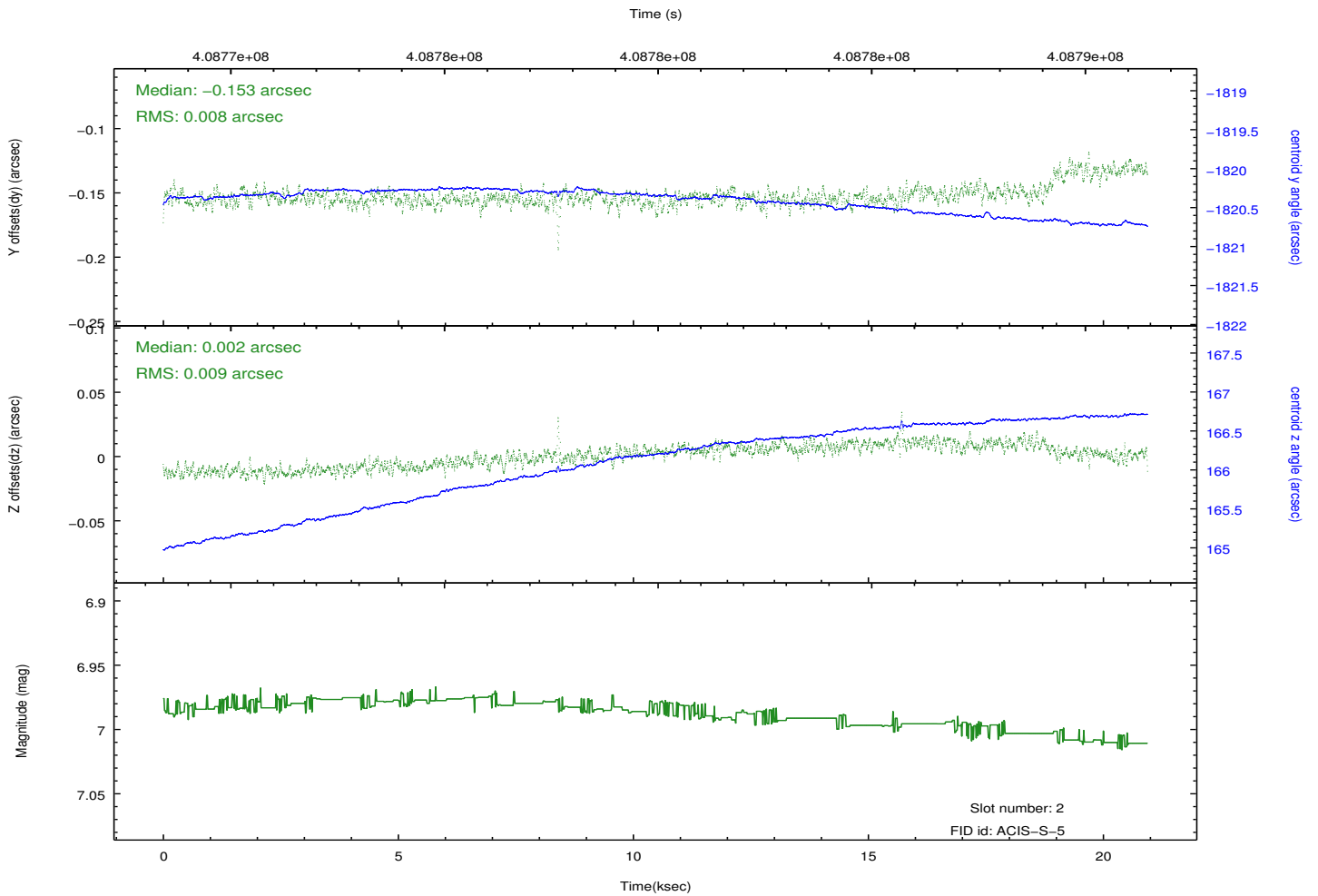
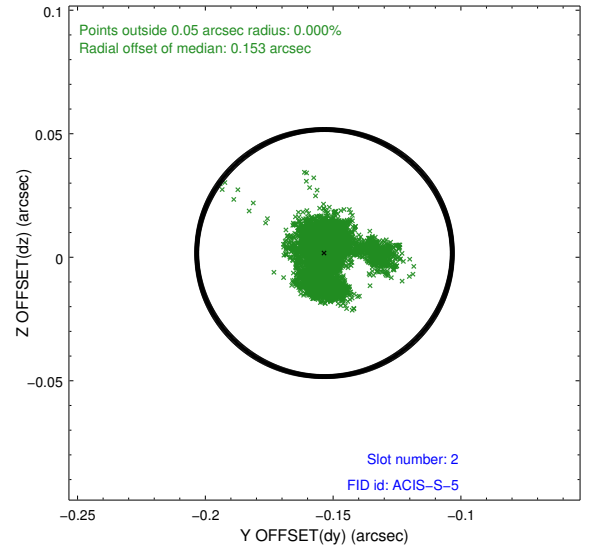
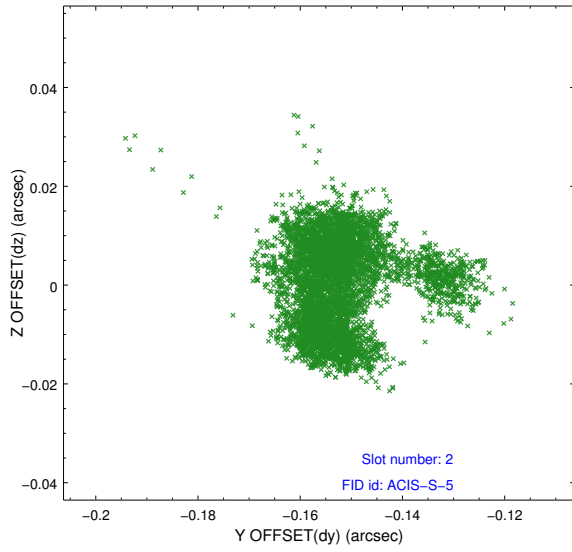
2.5.1 Slot 0



2.5.2 Slot 1



2.5.3 Slot 2



A Summary

A.1 Status

V&V Scientist	Jen Lauer
V&V Date (YYYY-MM-DD)	2012.07.17
V&V Edition	1
V&V Disposition and Status	OK
V&V Charge Time	20.051199925363

A.2 Comments

Joint proposal with NRAO.