

V&V Reference Report

L2 ASCDS Version : 8.4.5

Observation 13125 - L2 Version 2
Chandra X-Ray Center

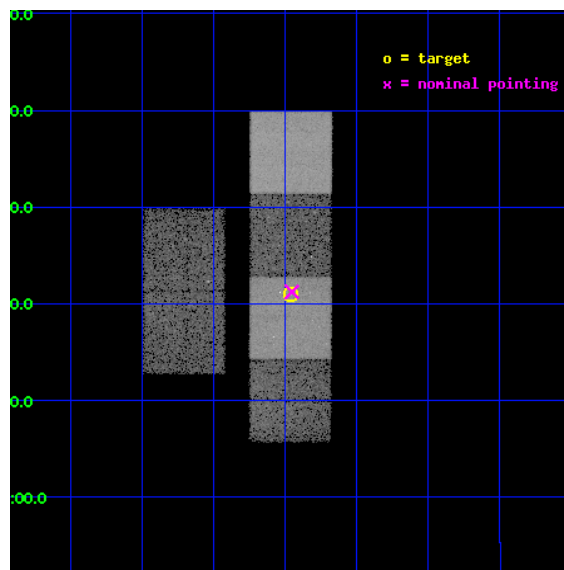
L2 Processing Date : Jul 3 2012

Contents

1	Front	2
2	OBI	3
2.1	OBI	3
2.1.1	Images	3
2.1.2	Bias	3
2.1.3	Parameters	4
2.1.4	Events	4
2.2	Compared Parameters	5
2.3	Aspect	6
2.4	Star Slots	9
2.4.1	Slot 3	9
2.4.2	Slot 4	10
2.4.3	Slot 5	11
2.4.4	Slot 6	12
2.4.5	Slot 7	13
2.5	FID Slots	14
2.5.1	Slot 0	14
2.5.2	Slot 1	15
2.5.3	Slot 2	16
A	Summary	17
A.1	Status	17
A.2	Comments	17

1 Front

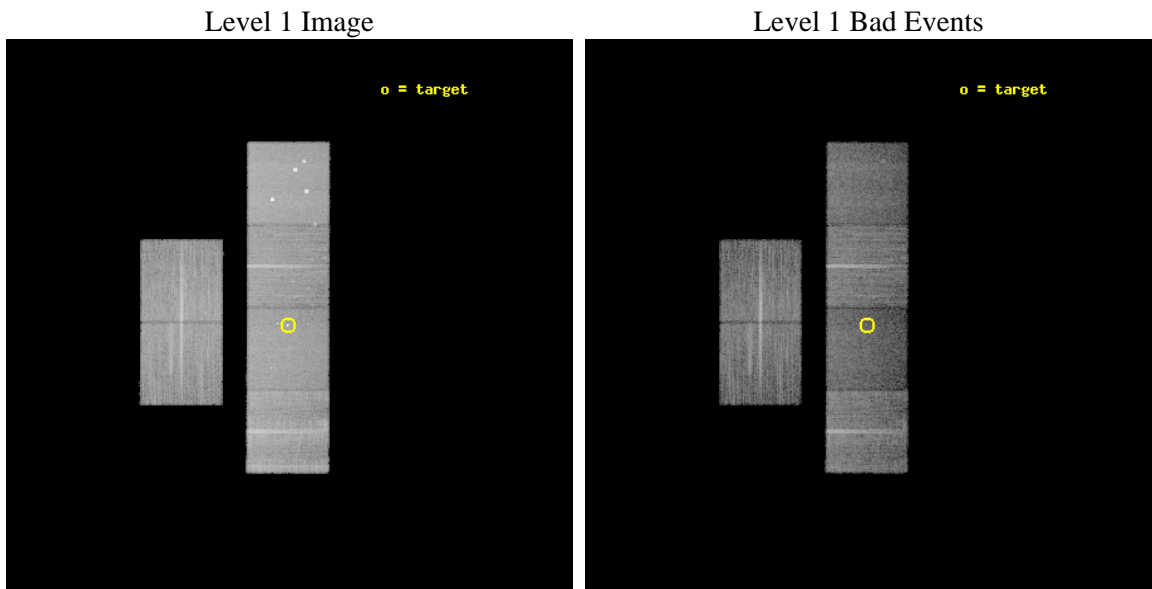
seq_num	900949	Sequence number
obs_id	13125	Observation id
title	A CHandra survey of Extended Emission-line Regions in nearby Seyfert galaxies (CHEERS)	Proposal title
observer	Dr. Junfeng Wang	Principal investigator
object	Mrk 573	Source name
dtcycle	0	
cycle	P	events from which exps? Prim/Second/Both
ra_targ	25.990833	Observer's specified target RA [deg]
dec_targ	2.35	Observer's specified target Dec [deg]
ra_nom	25.988247875975	Nominal RA [deg]
dec_nom	2.3541111510973	Nominal Dec [deg]
roll_nom	90.15674362048	Nominal Roll [deg]
revision	2	Processing version of data
ontime	17048.908050716	Sum of GTIs [s]
livetime	16833.024511358	Livetime [s]
ontime2	17048.949090719	Sum of GTIs [s]
ontime3	17045.544039965	Sum of GTIs [s]
ontime5	17048.867010713	Sum of GTIs [s]
ontime6	17048.825970709	Sum of GTIs [s]
ontime7	17048.908050716	Sum of GTIs [s]
ontime8	17045.502890408	Sum of GTIs [s]
l2events	181224	Number of level 2 events



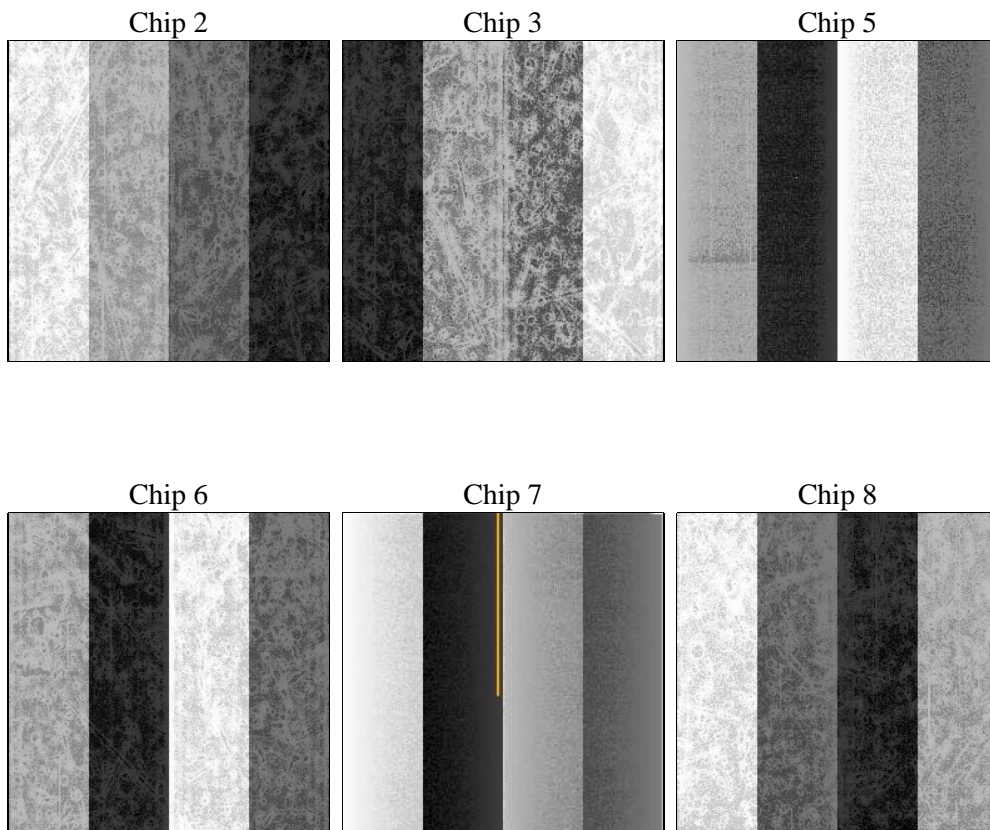
2 OBI

2.1 OBI

2.1.1 Images



2.1.2 Bias



2.1.3 Parameters

obi_num	0	Obi number	sched_exp_time	17000.000000	[s] Scheduled observation exposure time
ascdsver	8.4.5	Processing system revision	ontime	17048.908050716	Sum of GTIs [s]
caldbver	4.5.0	 	ontime2	17048.949090719	Sum of GTIs [s]
date	2012-07-03T08:38:16	Date and time of file creation	ontime3	17045.544039965	Sum of GTIs [s]
revision	2	Processing version of data	ontime5	17048.867010713	Sum of GTIs [s]
			ontime6	17048.825970709	Sum of GTIs [s]
			ontime7	17048.908050716	Sum of GTIs [s]
			ontime8	17045.502890408	Sum of GTIs [s]
			l1events	783393	Number of level 1 events

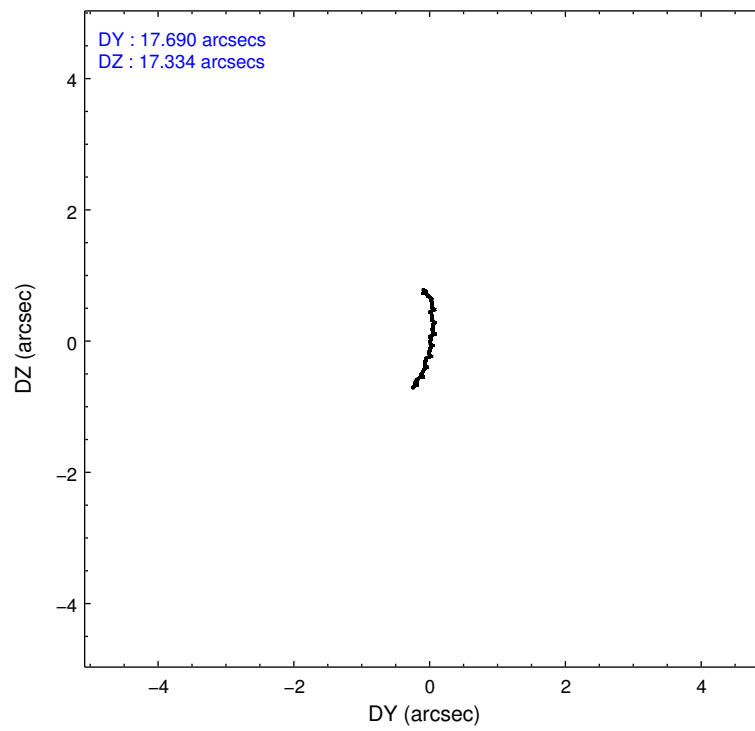
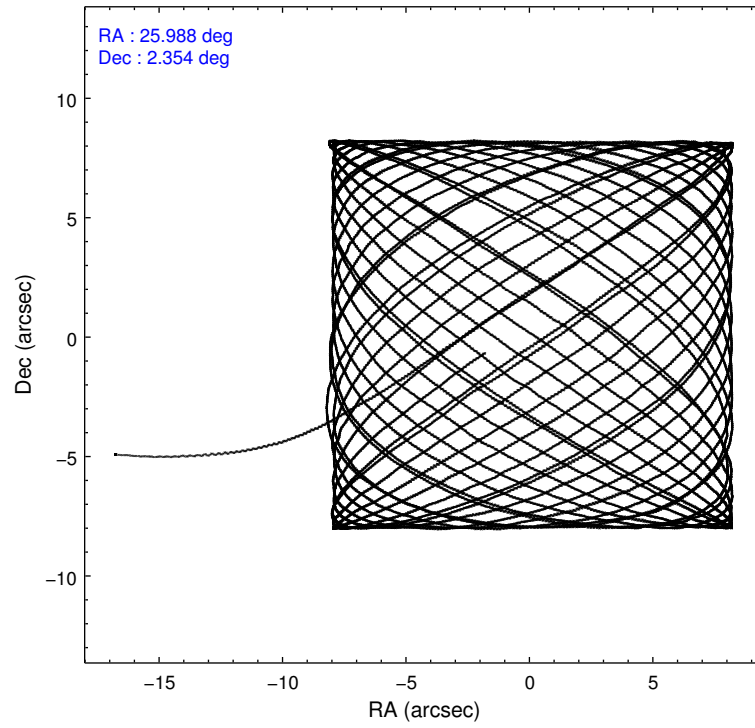
2.1.4 Events

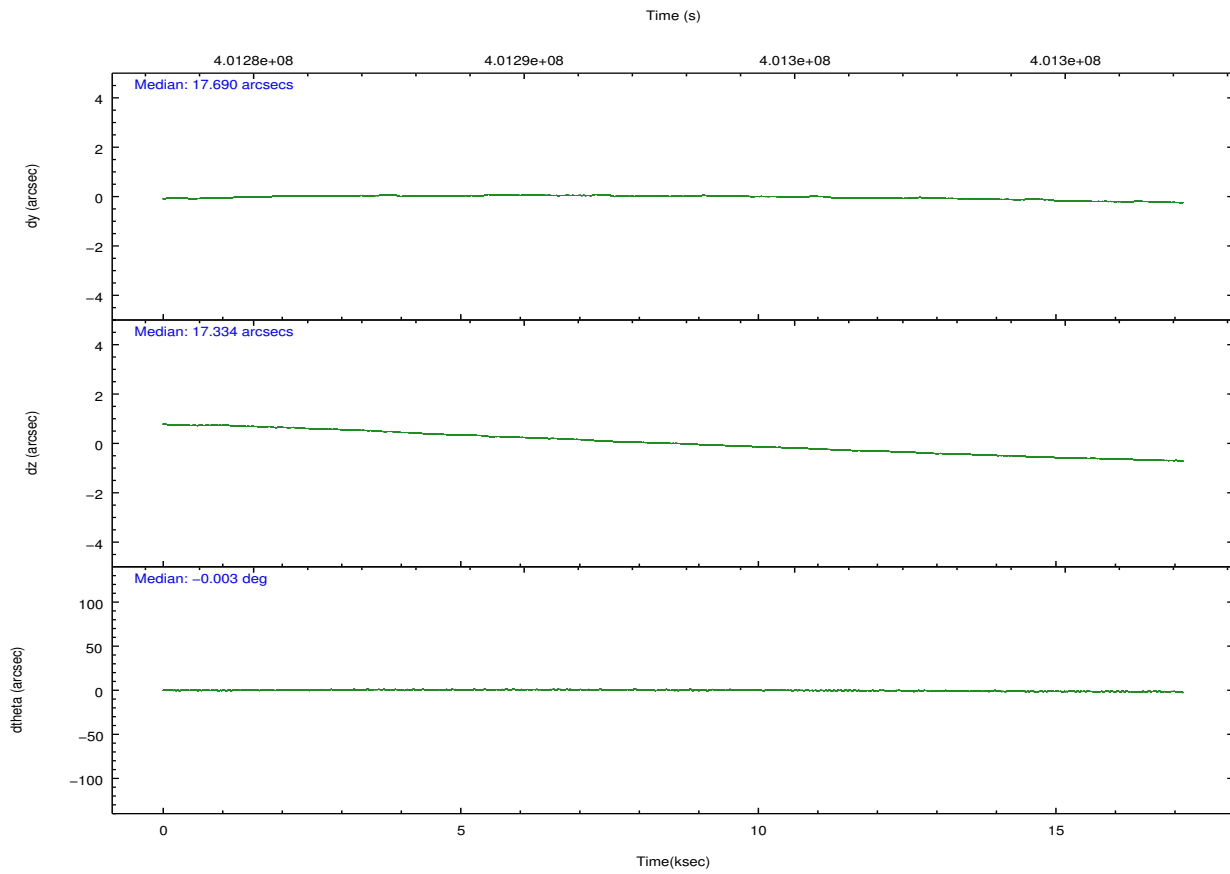
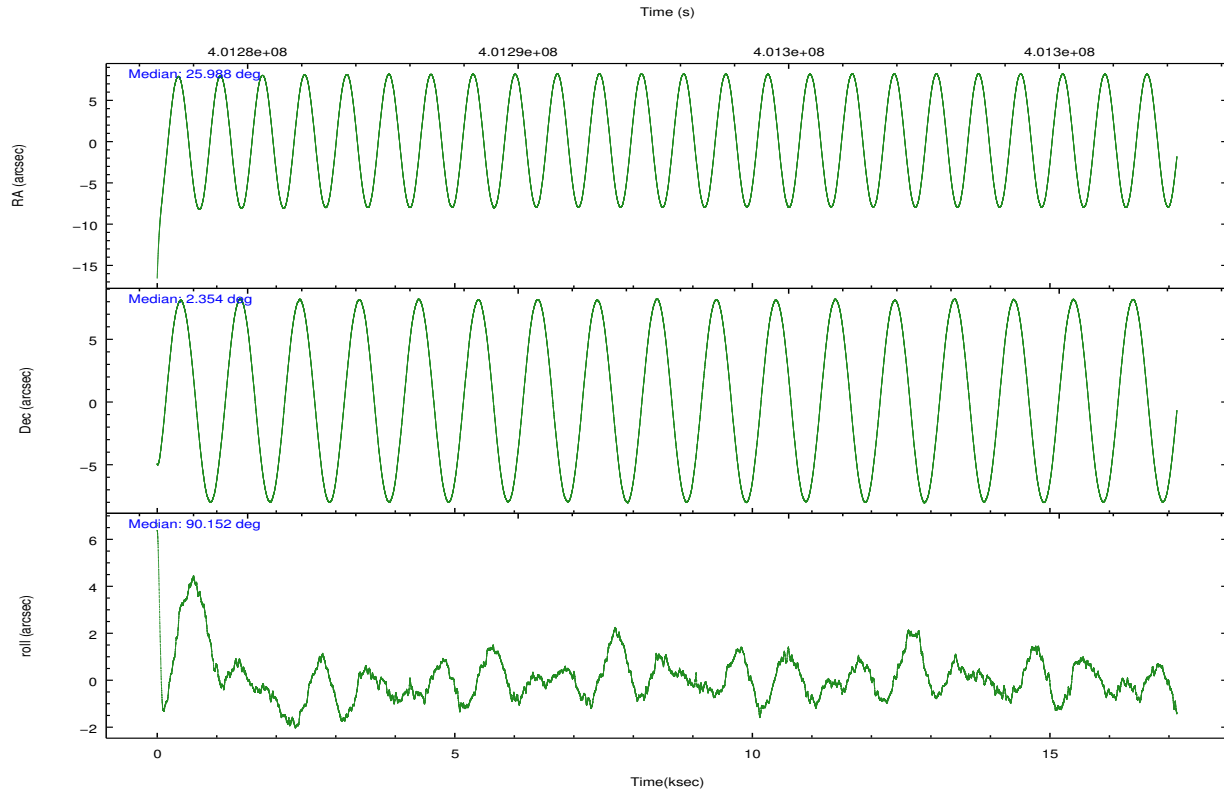
	ccd 2	ccd 3	ccd 5	ccd 6	ccd 7	ccd 8		ccd 2	ccd 3	ccd 5	ccd 6	ccd 7	ccd 8
level 1 events	119255	111057	165533	118218	124714	144616	grade 0 events	4580	4170	15523	4748	6743	10703
rejected events	106903	99803	74765	105179	63151	106391		3%	3%	9%	4%	5%	7%
rejected %	89%	89%	45%	88%	50%	73%	grade 1 events	70	74	327	59	187	117
								0%	0%	0%	0%	0%	0%
							grade 2 events	2959	2477	25785	2950	13276	9349
								2%	2%	15%	2%	10%	6%
							grade 3 events	1247	1218	3532	1417	5826	4093
								1%	1%	2%	1%	4%	2%
							grade 4 events	1315	1181	3439	1316	5626	3758
								1%	1%	2%	1%	4%	2%
							grade 5 events	3747	4454	12581	4478	13202	6832
								3%	4%	7%	3%	10%	4%
							grade 6 events	2255	2211	42521	2615	30112	10332
								1%	1%	25%	2%	24%	7%
							grade 7 events	103082	95272	61825	100635	49742	99432
								86%	85%	37%	85%	39%	68%

2.2 Compared Parameters

Parameter	Planned	Actual	Parameter	Planned	Actual
Instrument	ACIS	ACIS	Obspar format version number	7	7
Detector	ACIS-235678	ACIS-235678	Obspar file type	PREDICTED	ACTUAL
Grating	NONE	NONE	Obspar update status	NONE	UPDATED
Data mode	VFAINT	VFAINT	CCD I0 on	N	N
Observation mode	POINTING	POINTING	CCD I1 on	N	N
[deg] Pointing RA	26.002336	25.98824787597507	CCD I2 on	O4	Y
[deg] Pointing Dec	2.330668	2.354111151097287	CCD I3 on	O3	Y
[deg] Pointing Roll	89.999532	90.15674362047977	CCD S0 on	N	N
[mm] SIM focus pos	-0.684267	-0.6828225247311905	CCD S1 on	O5	Y
[mm] SIM defocus	0	0.001444936568705701	CCD S2 on	O1	Y
[mm] SIM translation stage pos	-190.132523	-190.1400660498719	CCD S3 on	Y	Y
[mm] SIM translation stage offset	0	0.00754346686406393	CCD S4 on	O2	Y
[s] Observation start time (MET)	401284327.184000	401283148.98701	CCD S5 on	N	N
Observation start date	2010-09-19T11:51:01	2010-09-19T11:32:28	Number of optional ACIS chips dropped	0	0
[s] Observation end time (MET)	401301327.184000	401302490.22551	On-chip summing requested	N	N
Observation end date	2010-09-19T16:34:21	2010-09-19T16:54:50	Subarray requested	NONE	NONE
Read mode	TIMED	TIMED	Alternating exposures requested	N	N
			[s] Primary exposure time	0.000000	3.2

2.3 Aspect



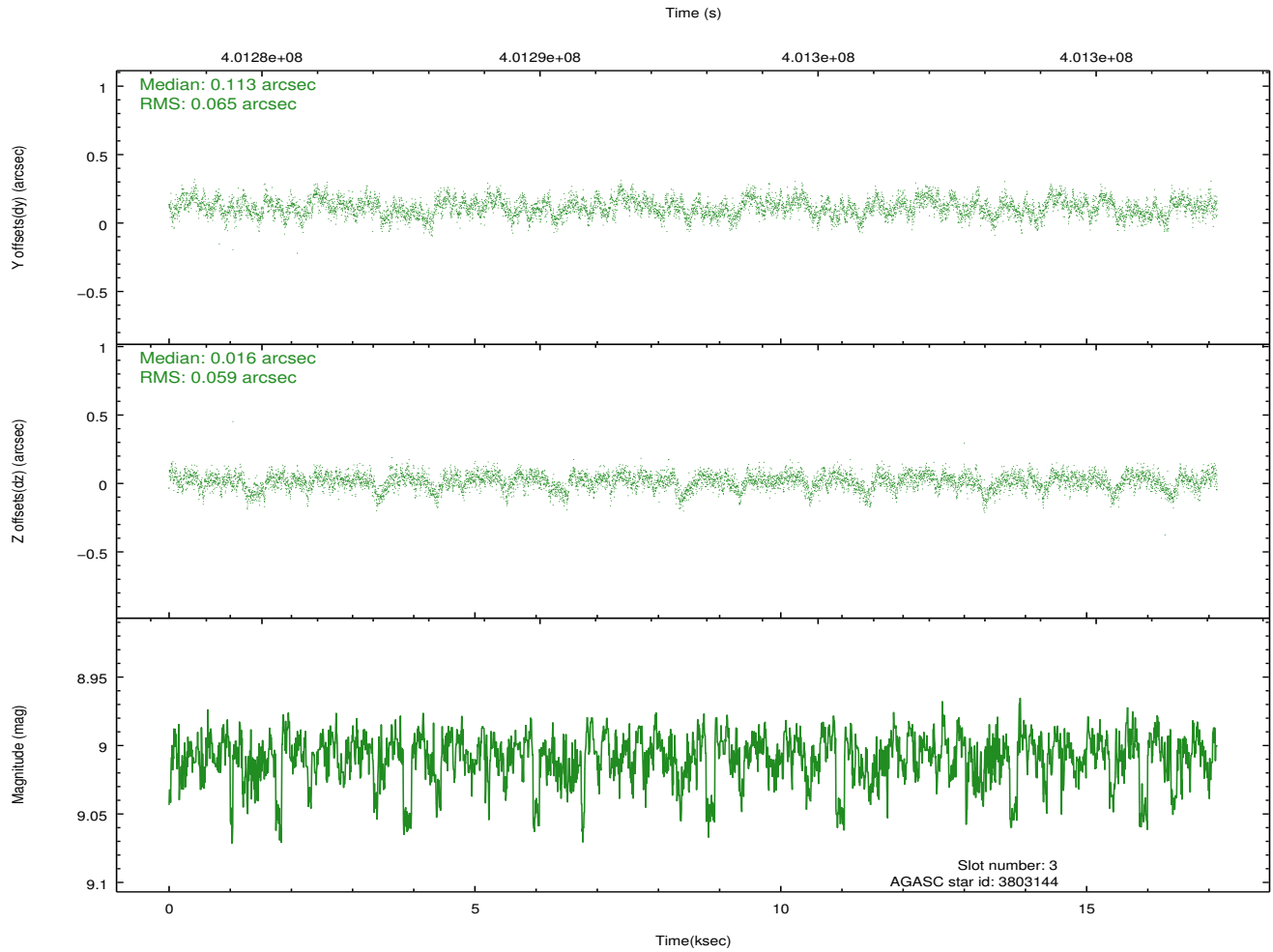
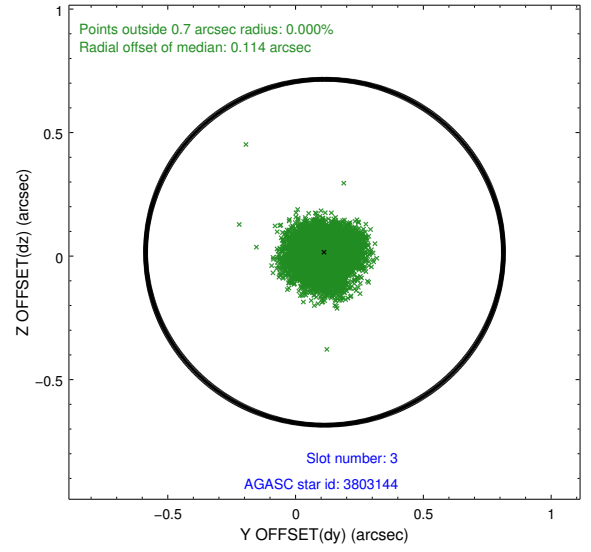
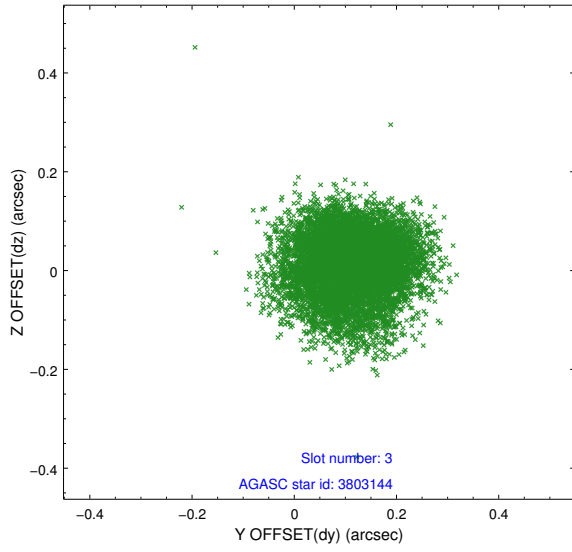


Slot Statistics

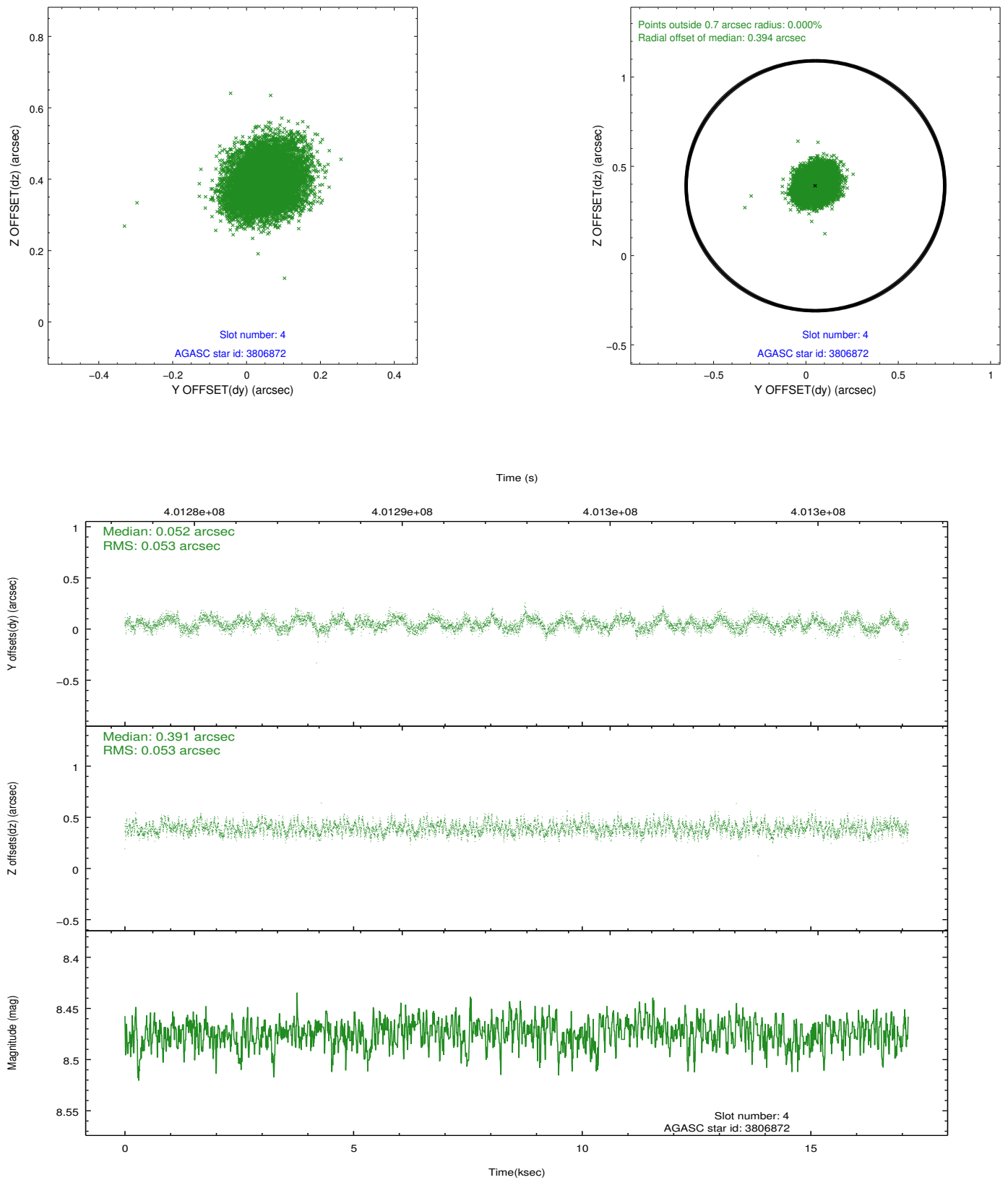
slot	status	id	mag	n_pts	med_dy	med_dz	dr1	dr2	ra	dec	mean_y	mean_z
0	FID	ACIS-S-2	6.89	4179	-0.060	-0.031	0.013	0.021	0.000000	0.000000	-770.80	-1738.81
1	FID	ACIS-S-4	6.97	4180	0.189	0.038	0.006	0.010	0.000000	0.000000	2142.66	169.43
2	FID	ACIS-S-5	7.00	4179	-0.161	0.004	0.012	0.024	0.000000	0.000000	-1823.38	163.42
3	GUIDE	3803144	9.01	8356	0.113	0.016	0.094	0.151	25.484135	1.902592	-1542.46	1866.04
4	GUIDE	3806872	8.47	8357	0.052	0.391	0.081	0.126	26.148027	1.973453	-1286.12	-523.45
5	GUIDE	3808576	8.34	8354	0.095	-0.356	0.065	0.105	25.433389	1.909231	-1516.97	2046.65
6	GUIDE	4194920	8.65	8355	-0.010	0.164	0.084	0.133	26.080477	2.615510	1025.08	-279.60
7	GUIDE	4197368	7.74	8358	-0.252	-0.211	0.063	0.099	25.471433	2.704386	1345.73	1908.86

2.4 Star Slots

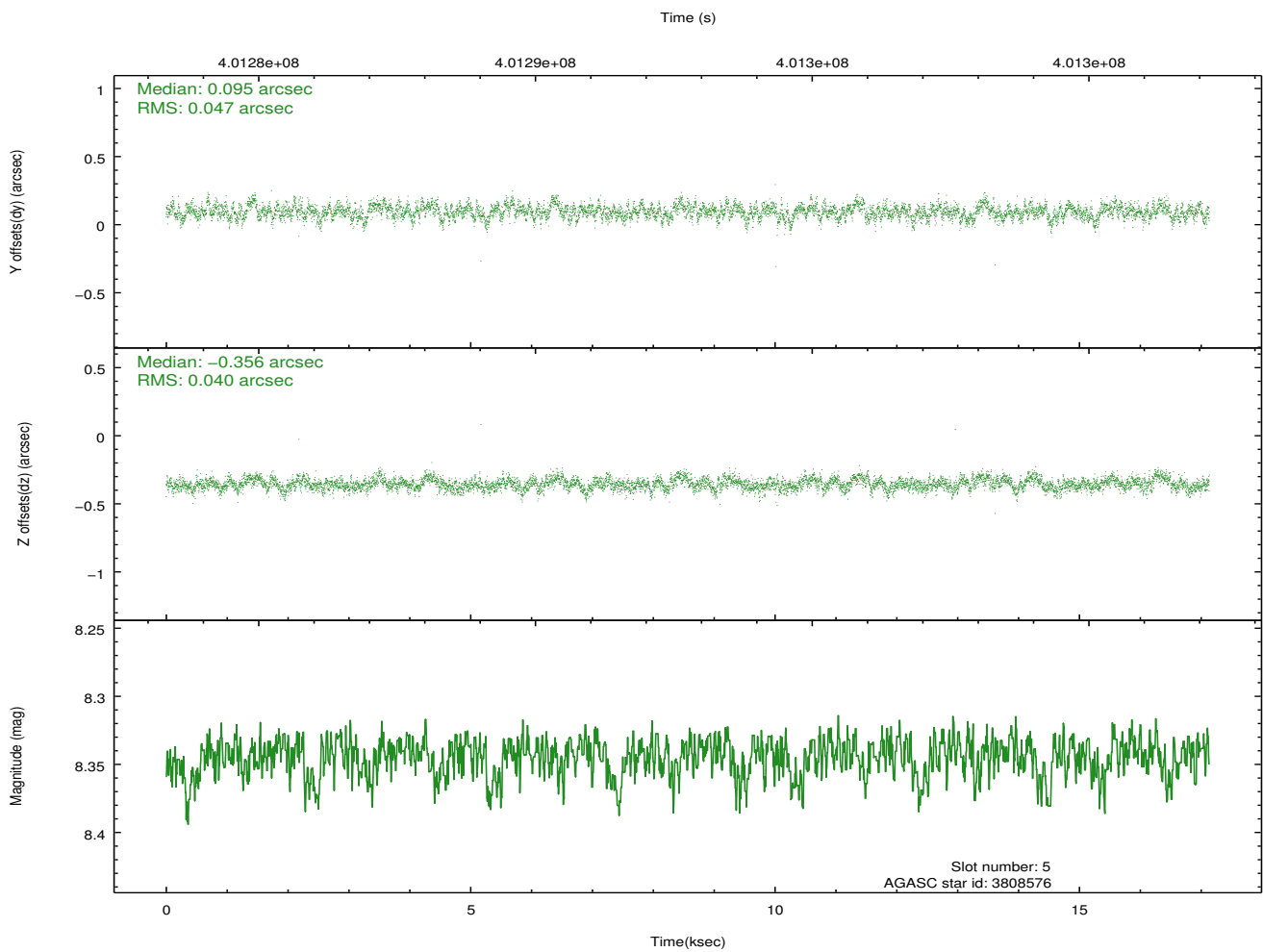
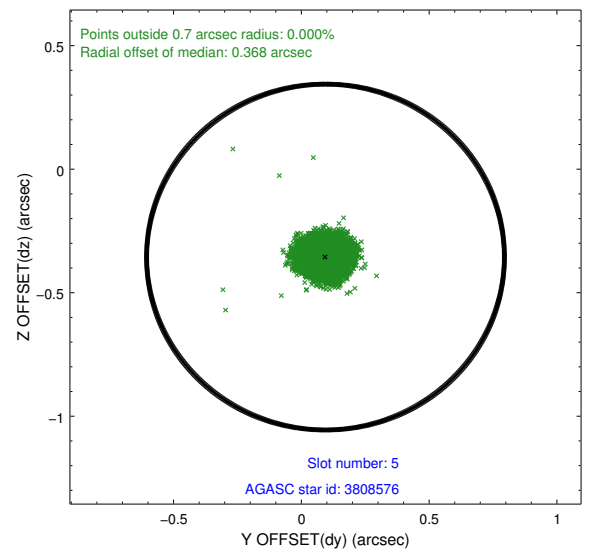
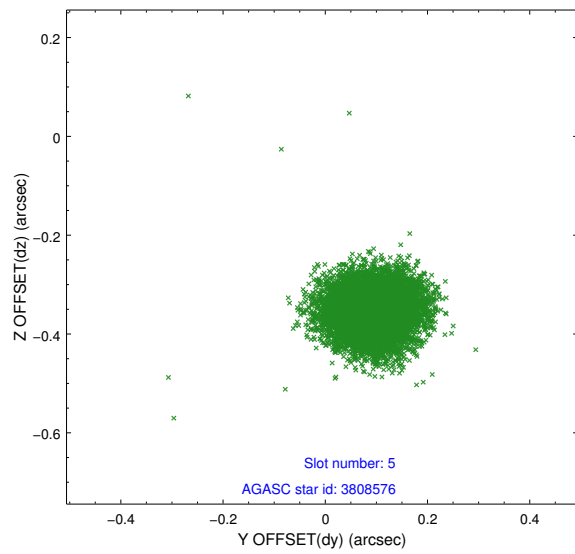
2.4.1 Slot 3



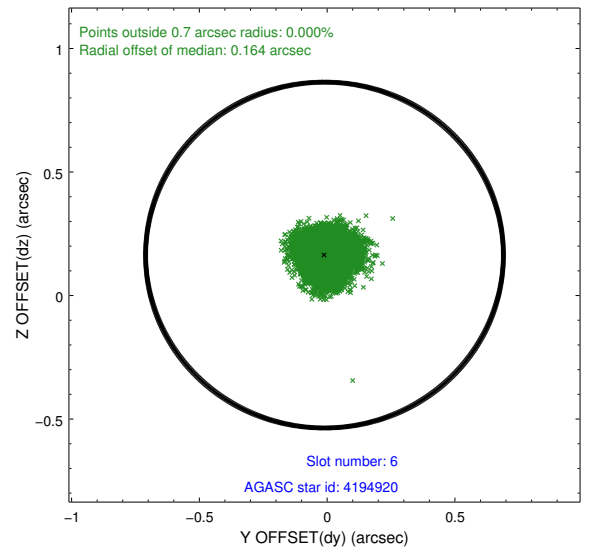
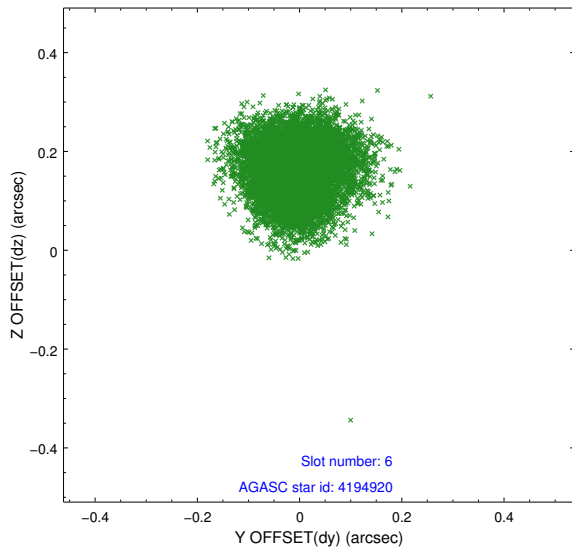
2.4.2 Slot 4



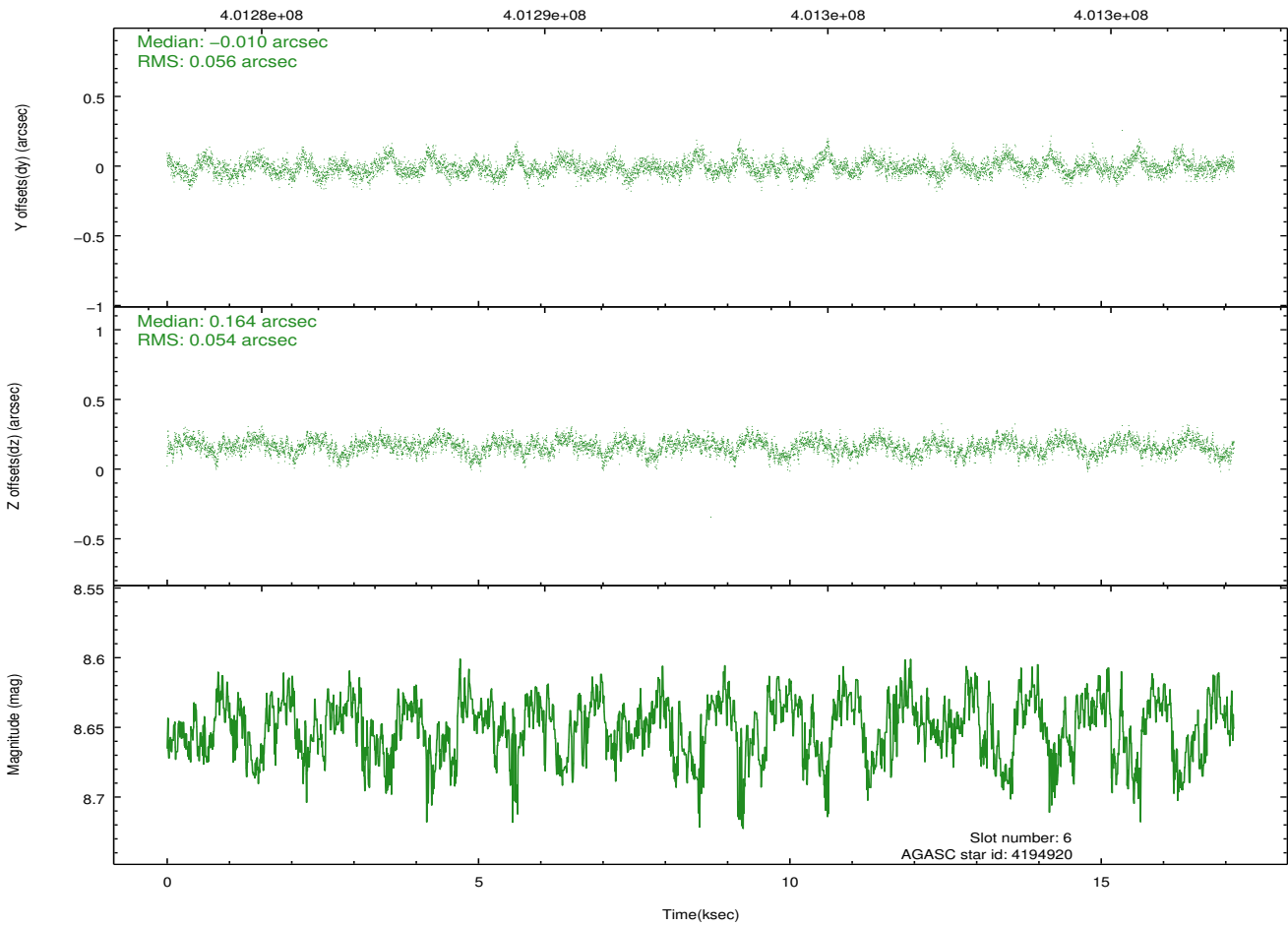
2.4.3 Slot 5



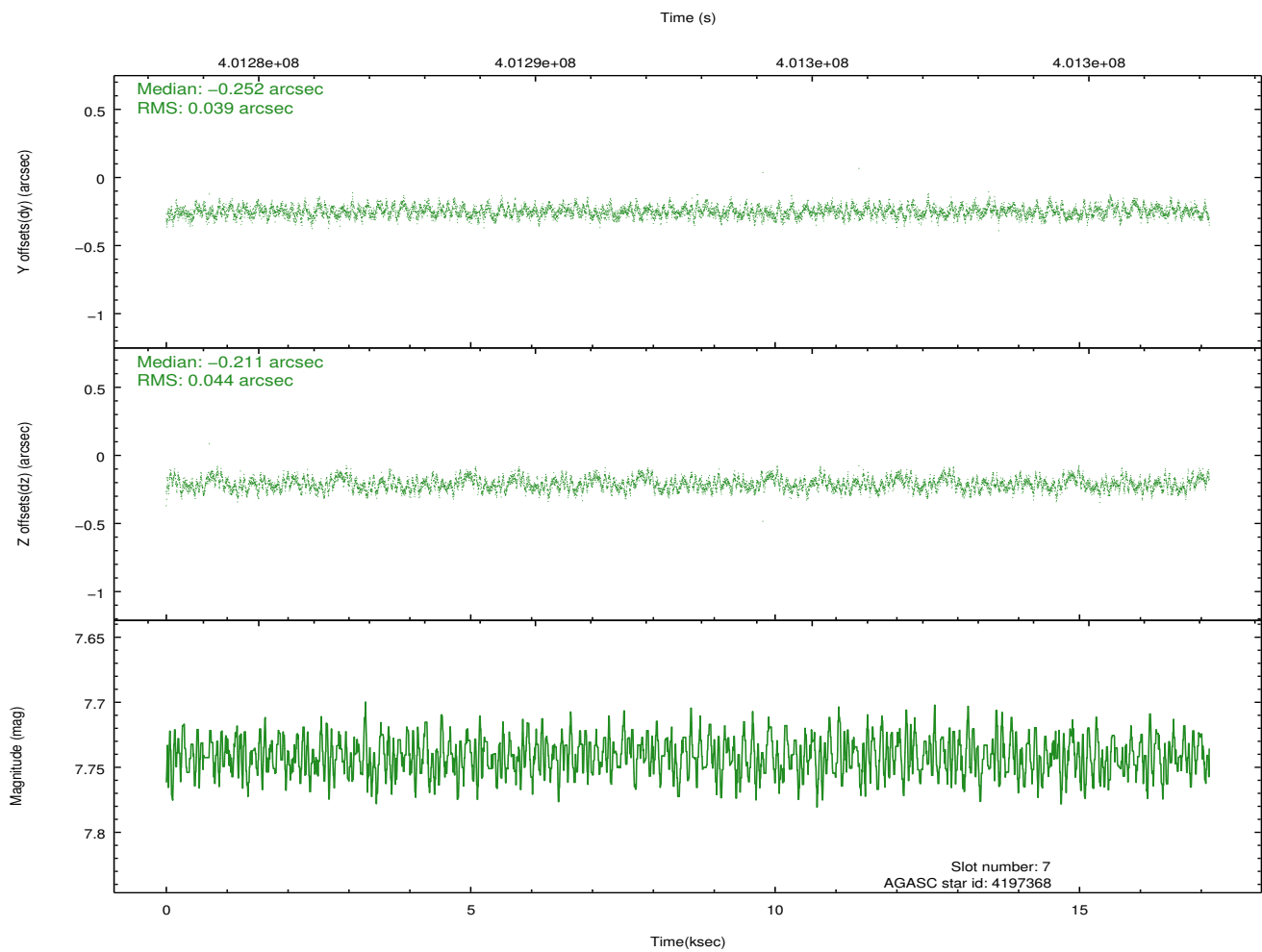
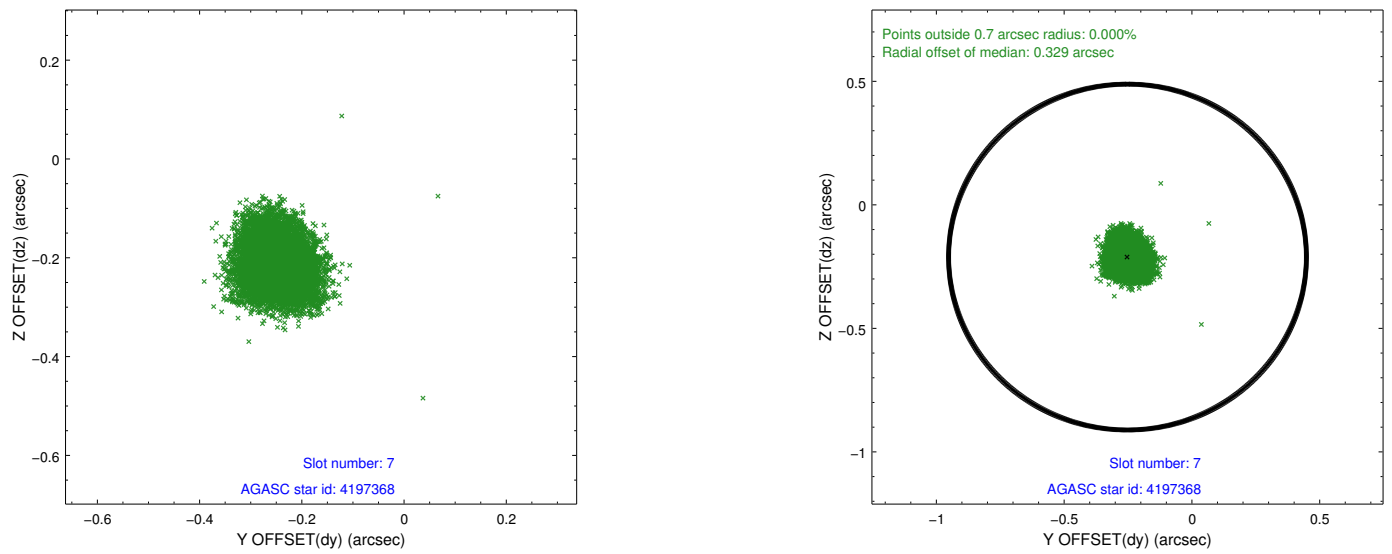
2.4.4 Slot 6



Time (s)

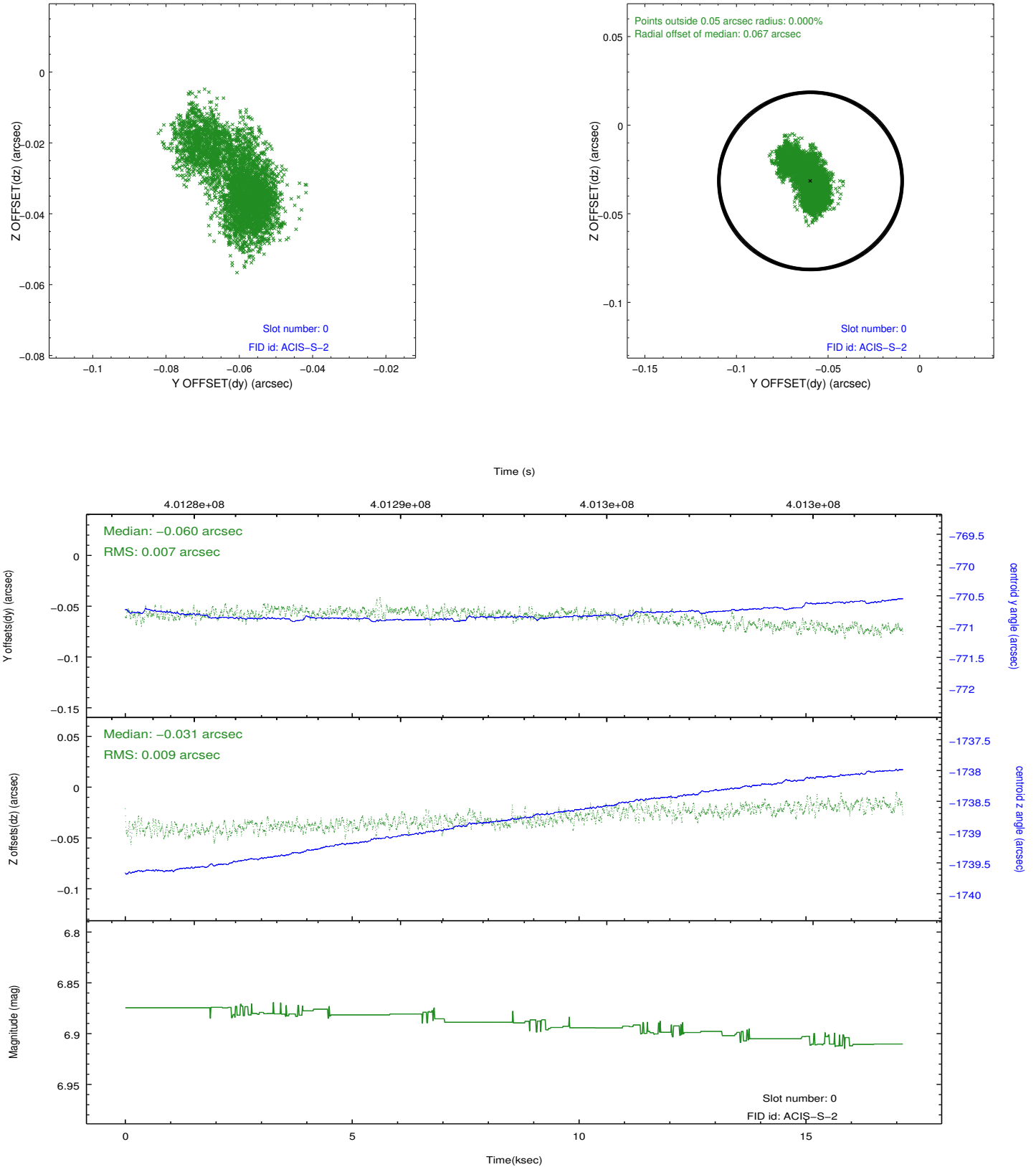


2.4.5 Slot 7

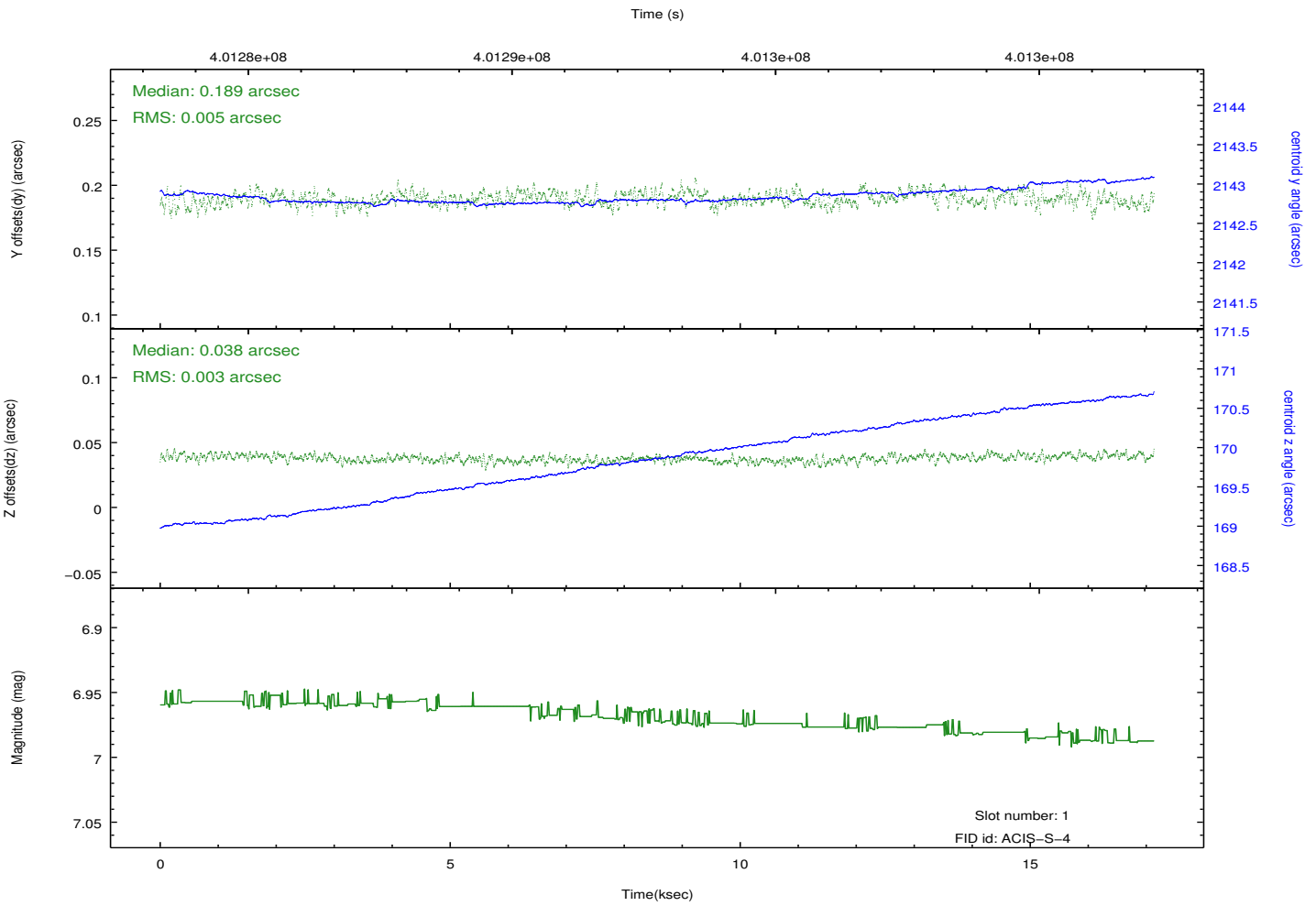
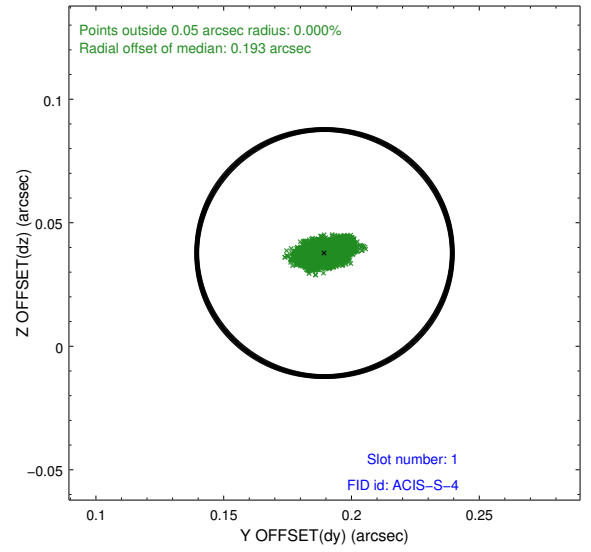
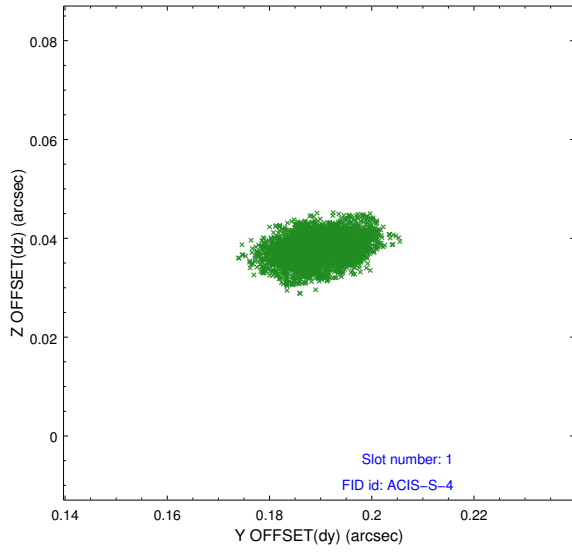


2.5 FID Slots

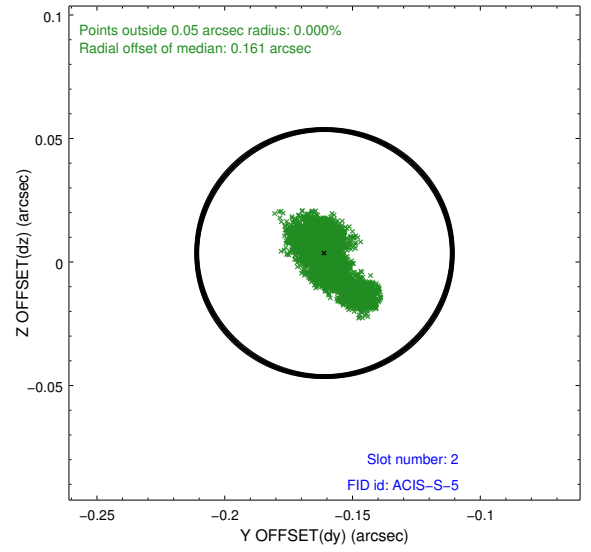
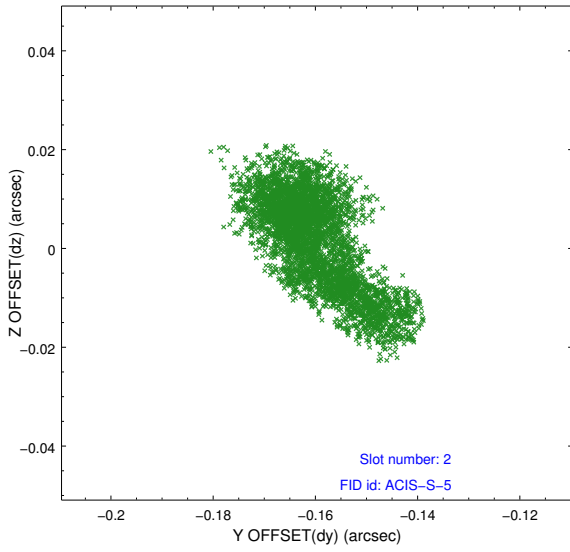
2.5.1 Slot 0



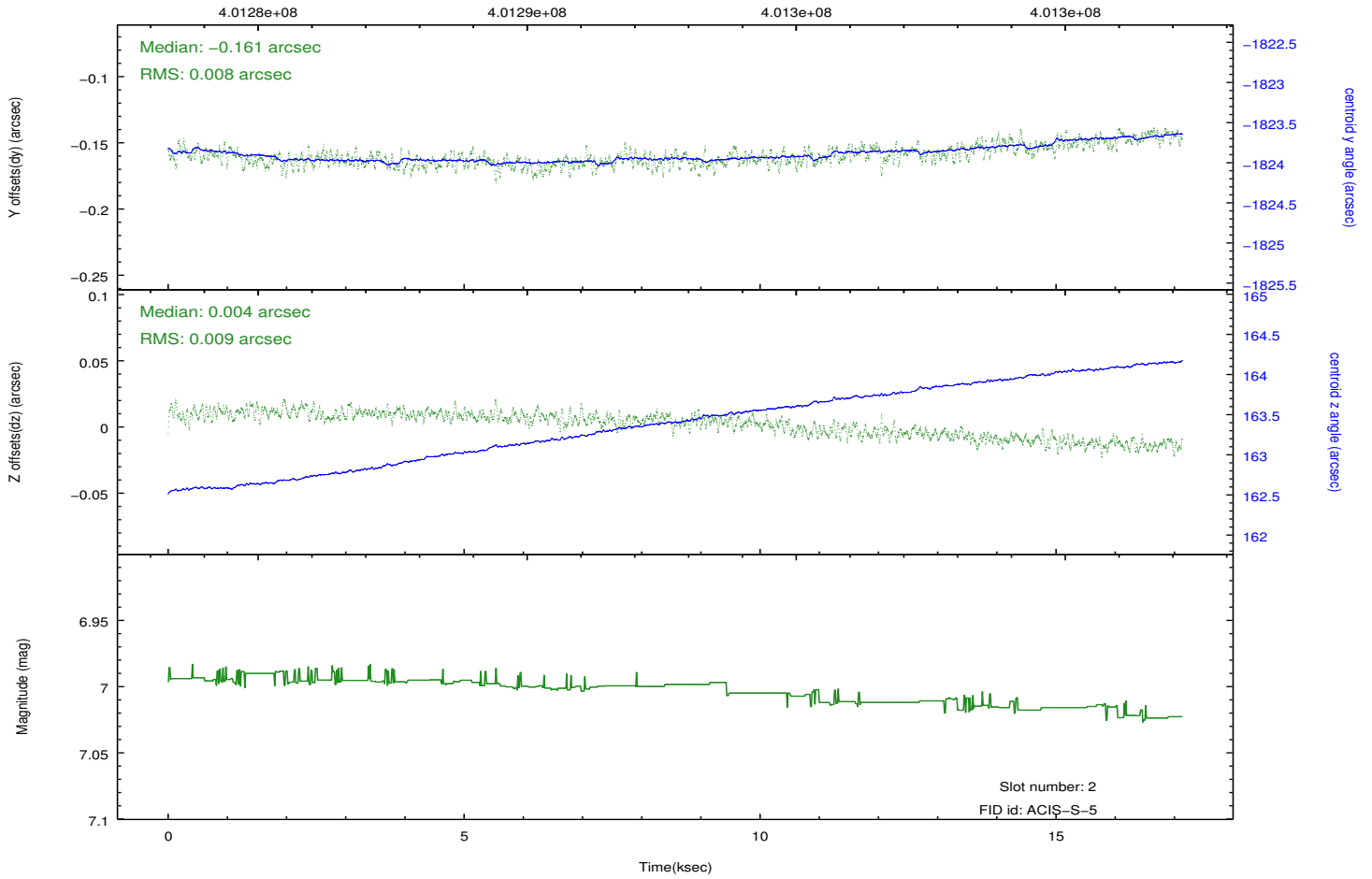
2.5.2 Slot 1



2.5.3 Slot 2



Time (s)



A Summary

A.1 Status

V&V Scientist	Jen Lauer
V&V Date (YYYY-MM-DD)	2012.07.11
V&V Edition	1
V&V Disposition and Status	OK
V&V Charge Time	17.048908057928

A.2 Comments

Joint proposal with HST.