

V&V Reference Report

L2 ASCDS Version : 8.4.5

Observation 13385 - L2 Version 1
Chandra X-Ray Center

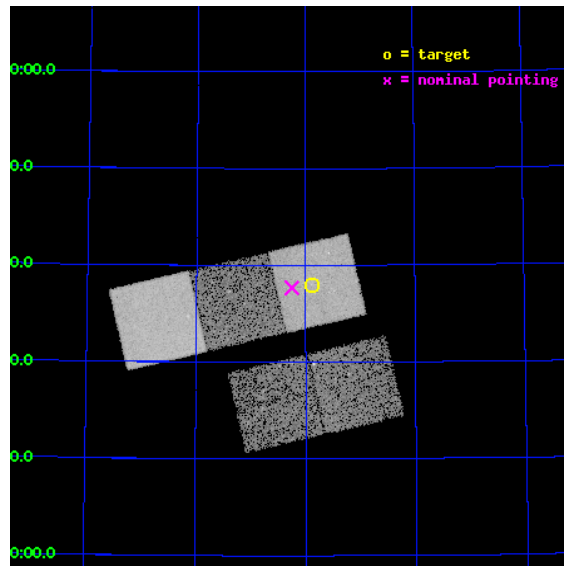
L2 Processing Date : Sep 10 2012

Contents

1	Front	2
2	OBI	3
2.1	OBI	3
2.1.1	Images	3
2.1.2	Bias	3
2.1.3	Parameters	4
2.1.4	Events	4
2.2	Compared Parameters	5
2.3	Aspect	6
2.4	Star Slots	9
2.4.1	Slot 3	9
2.4.2	Slot 4	10
2.4.3	Slot 5	11
2.4.4	Slot 6	12
2.4.5	Slot 7	13
2.5	FID Slots	14
2.5.1	Slot 0	14
2.5.2	Slot 1	15
2.5.3	Slot 2	16
A	Summary	17
A.1	Status	17
A.2	Comments	17

1 Front

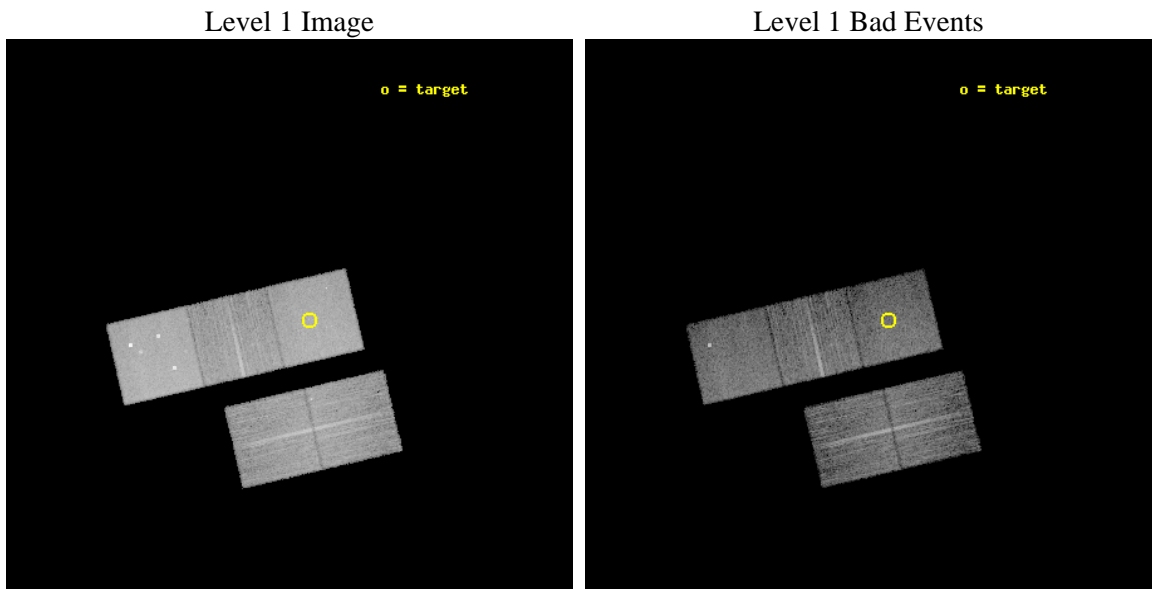
seq_num	801072	Sequence number
obs_id	13385	Observation id
title	Assembling a Large Sample of Fossil Groups	Proposal title
observer	Professor Gordon Garmire	Principal investigator
object	SDSS J1157+6738	Source name
dtcycle	0	
cycle	P	events from which exps? Prim/Second/Both
ra_targ	179.472083	Observer's specified target RA [deg]
dec_targ	67.633694	Observer's specified target Dec [deg]
ra_nom	179.56301541767	Nominal RA [deg]
dec_nom	67.628200825435	Nominal Dec [deg]
roll_nom	346.9114441758	Nominal Roll [deg]
revision	1	Processing version of data
ontime	15069.100115895	Sum of GTIs [s]
livetime	14872.211229171	Livetime [s]
ontime2	15069.100115895	Sum of GTIs [s]
ontime3	15069.100115895	Sum of GTIs [s]
ontime5	15069.100115895	Sum of GTIs [s]
ontime6	15069.100115895	Sum of GTIs [s]
ontime7	15069.100115895	Sum of GTIs [s]
l2events	127669	Number of level 2 events



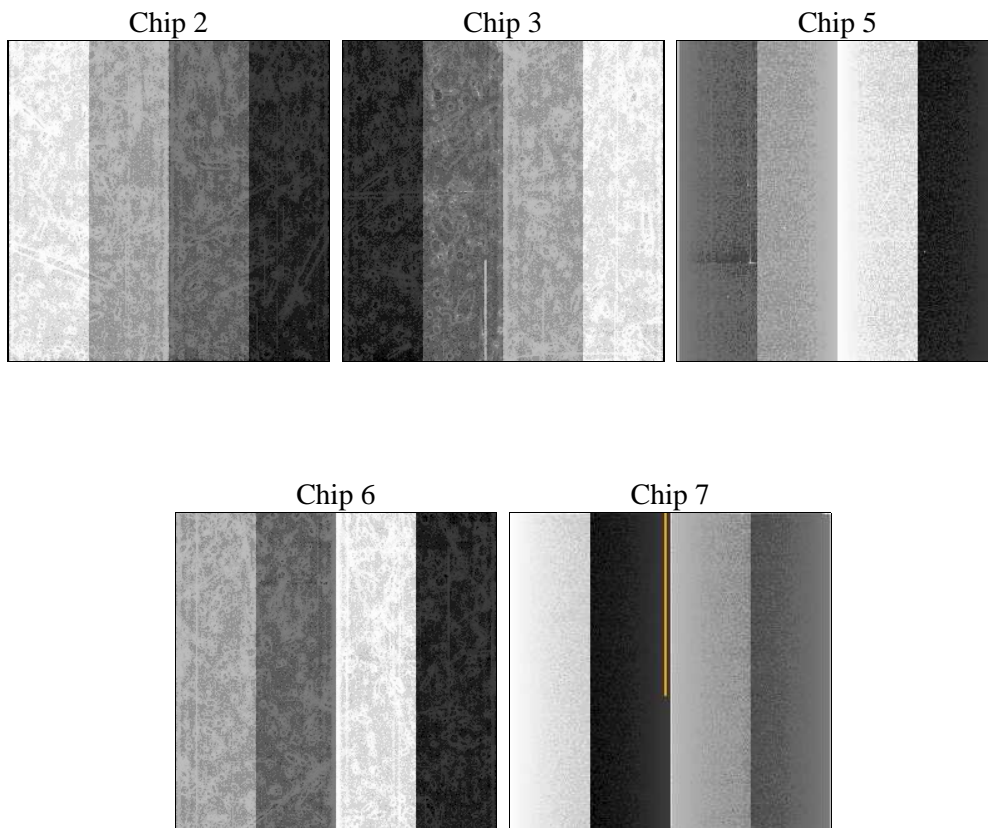
2 OBI

2.1 OBI

2.1.1 Images



2.1.2 Bias



2.1.3 Parameters

obi_num	3	Obi number	sched_exp_time	15000.882000	[s] Scheduled observation exposure time
ascdsver	8.4.5	Processing system revision	ontime	15069.100115895	Sum of GTIs [s]
caldbver	4.5.1.1	 	ontime2	15069.100115895	Sum of GTIs [s]
date	2012-09-11T02:14:40	Date and time of file creation	ontime3	15069.100115895	Sum of GTIs [s]
revision	1	Processing version of data	ontime5	15069.100115895	Sum of GTIs [s]
			ontime6	15069.100115895	Sum of GTIs [s]
			ontime7	15069.100115895	Sum of GTIs [s]
			l1events	467564	Number of level 1 events

2.1.4 Events

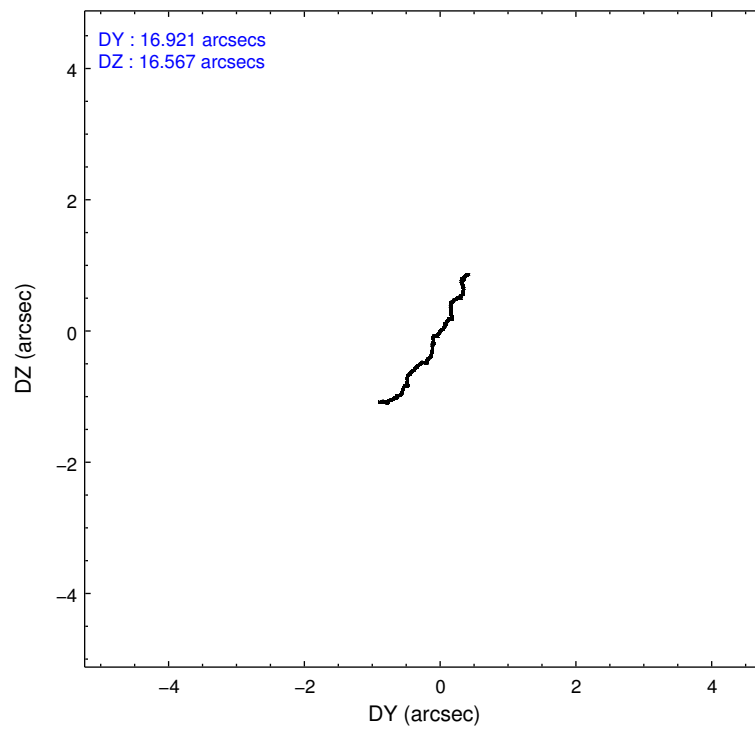
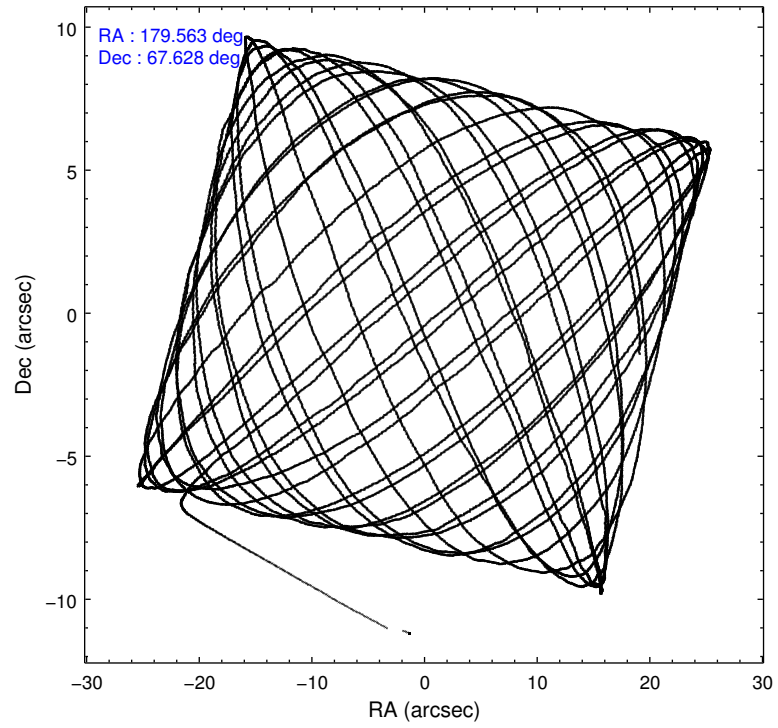
	ccd 2	ccd 3	ccd 5	ccd 6	ccd 7
level 1 events	75655	74502	132881	78761	105765
rejected events	66636	65648	66725	69280	59362
rejected %	88%	88%	50%	87%	56%

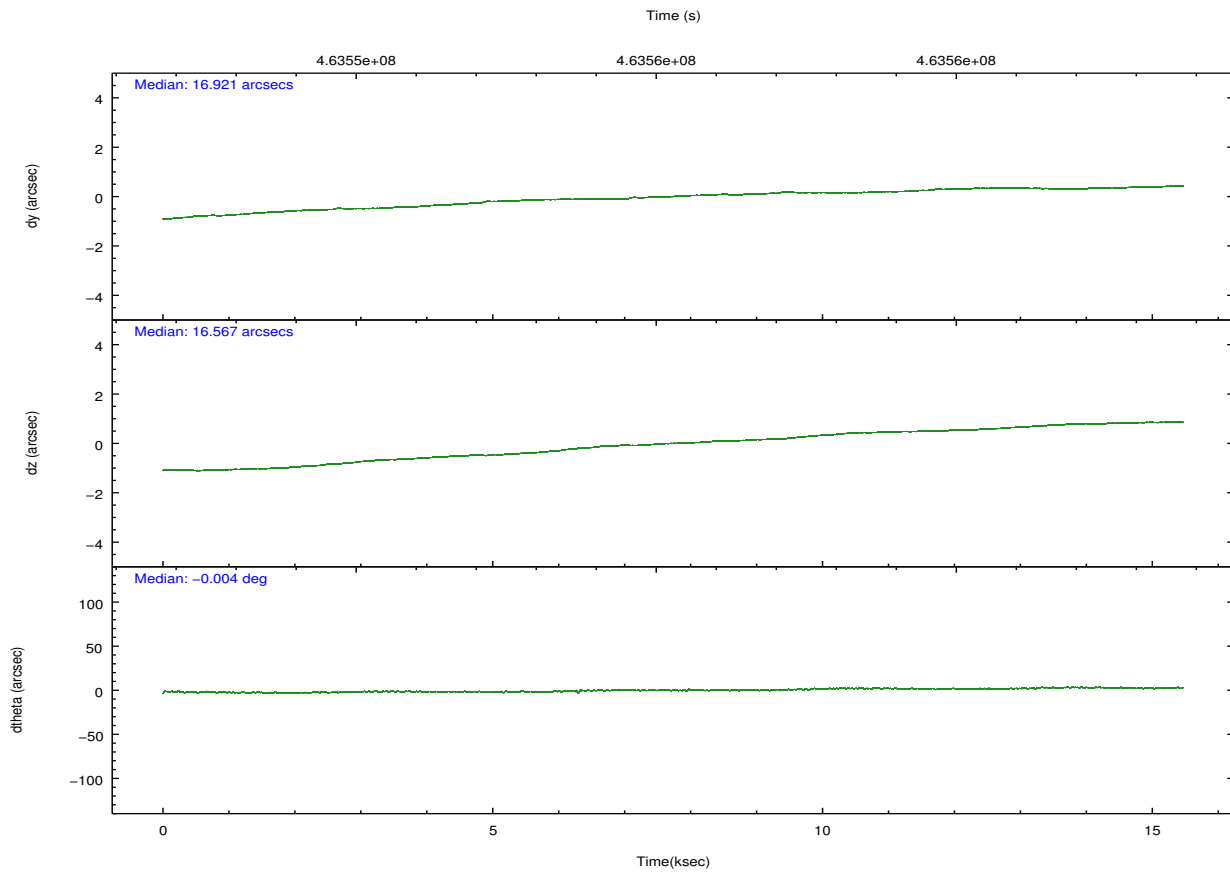
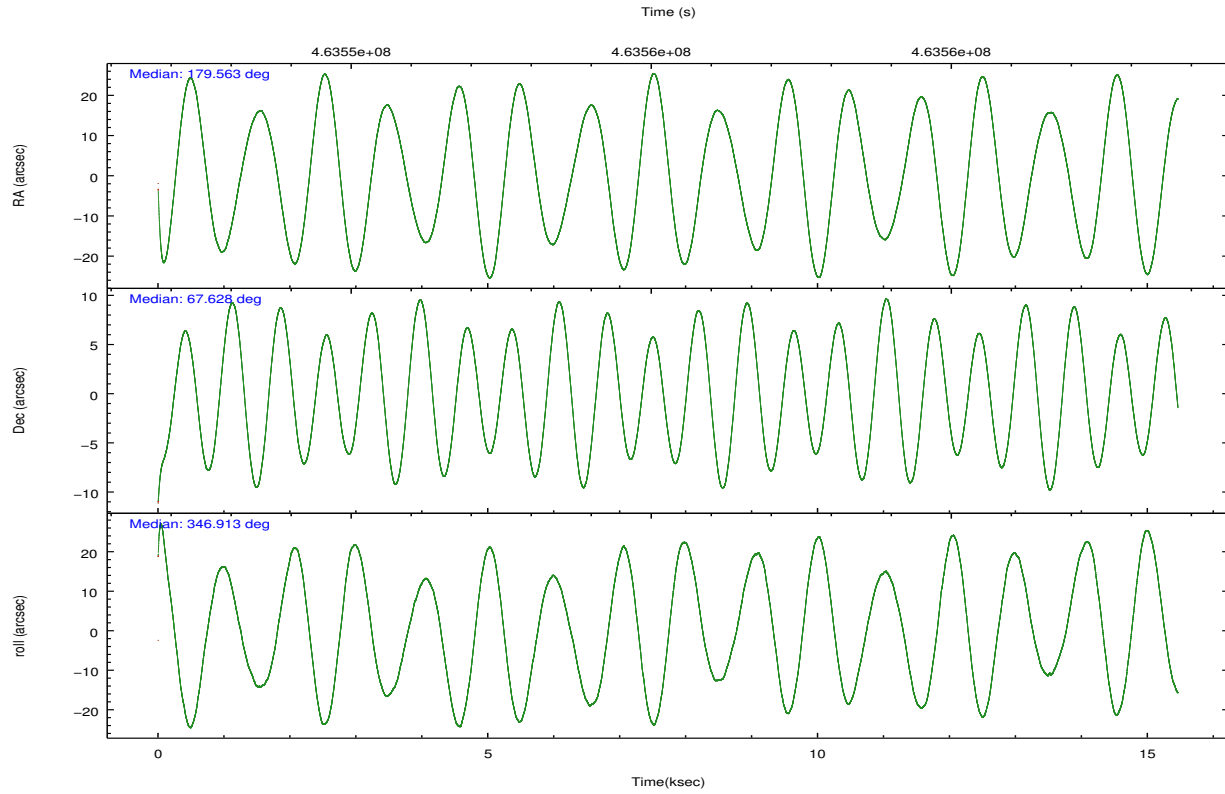
	ccd 2	ccd 3	ccd 5	ccd 6	ccd 7
grade 0 events	3302	3203	8562	3268	4256
	4%	4%	6%	4%	4%
grade 1 events	45	38	268	47	130
	0%	0%	0%	0%	0%
grade 2 events	2117	1932	19560	2149	9425
	2%	2%	14%	2%	8%
grade 3 events	943	944	2378	960	4027
	1%	1%	1%	1%	3%
grade 4 events	917	941	2213	969	4003
	1%	1%	1%	1%	3%
grade 5 events	3328	4007	9855	3899	10893
	4%	5%	7%	4%	10%
grade 6 events	1740	1836	33457	2137	24698
	2%	2%	25%	2%	23%
grade 7 events	63263	61601	56588	65332	48333
	83%	82%	42%	82%	45%

2.2 Compared Parameters

Parameter	Planned	Actual	Parameter	Planned	Actual
Instrument	ACIS	ACIS	Obspar format version number	7	7
Detector	ACIS-23567	ACIS-23567	Obspar file type	PREDICTED	ACTUAL
Grating	NONE	NONE	Obspar update status	NONE	UPDATED
Data mode	VFAINT	VFAINT	CCD I0 on	N	N
Observation mode	POINTING	POINTING	CCD I1 on	N	N
[deg] Pointing RA	179.494629	179.5630154176695	CCD I2 on	O1	Y
[deg] Pointing Dec	67.619882	67.6282008254349	CCD I3 on	O2	Y
[deg] Pointing Roll	346.818041	346.9114441757957	CCD S0 on	N	N
[mm] SIM focus pos	-0.684267	-0.6828225247311905	CCD S1 on	Y	Y
[mm] SIM defocus	0	0.001444936568705701	CCD S2 on	Y	Y
[mm] SIM translation stage pos	-190.132523	-190.1400660498719	CCD S3 on	Y	Y
[mm] SIM translation stage offset	0	0.00754346686406393	CCD S4 on	N	N
[s] Observation start time (MET)	463548015.184000	463546930.9251	CCD S5 on	N	N
Observation start date	2012-09-09T03:19:08	2012-09-09T03:02:10	Number of optional ACIS chips dropped	0	0
[s] Observation end time (MET)	463563015.184000	463563241.75097	On-chip summing requested	N	N
Observation end date	2012-09-09T07:29:08	2012-09-09T07:34:01	Subarray requested	NONE	NONE
Read mode	TIMED	TIMED	Alternating exposures requested	N	N
			[s] Primary exposure time	0.000000	3.1

2.3 Aspect



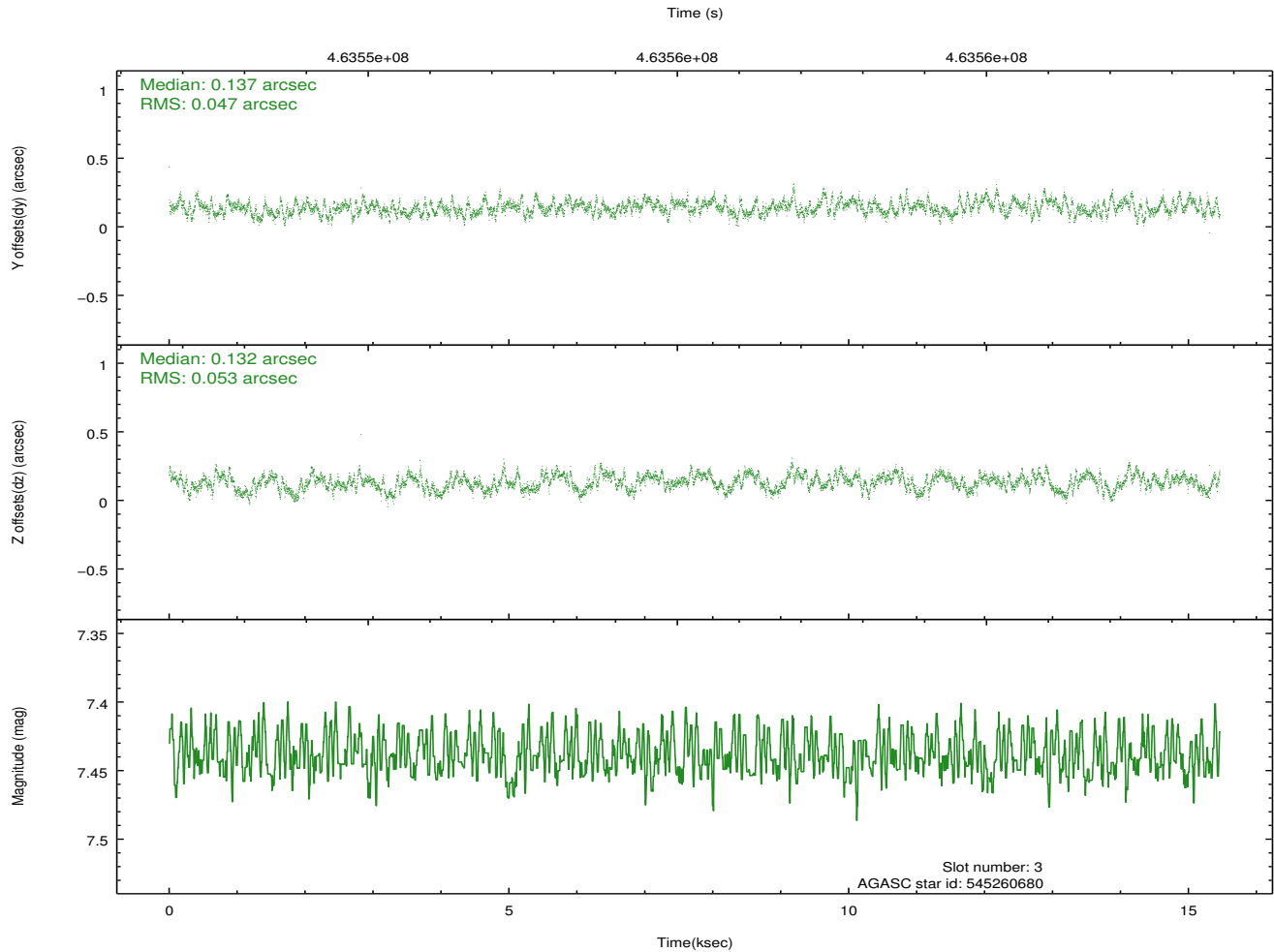
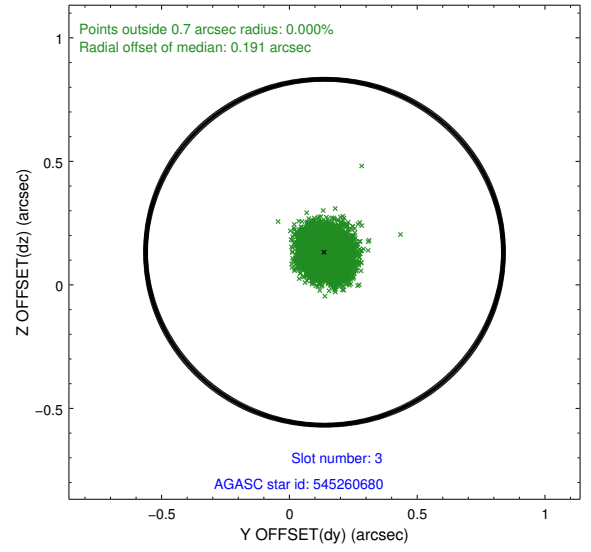
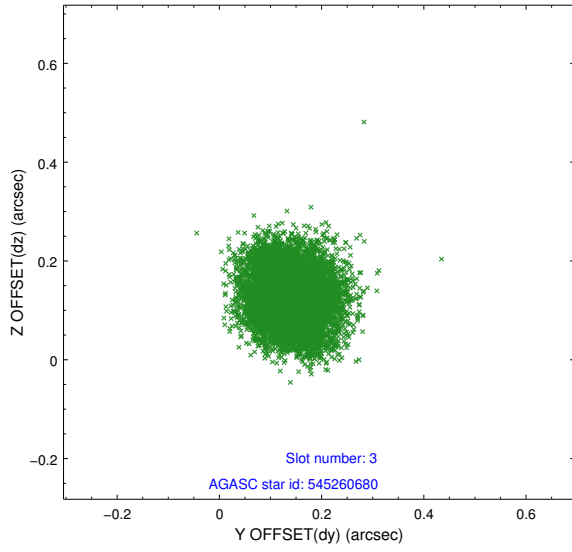


Slot Statistics

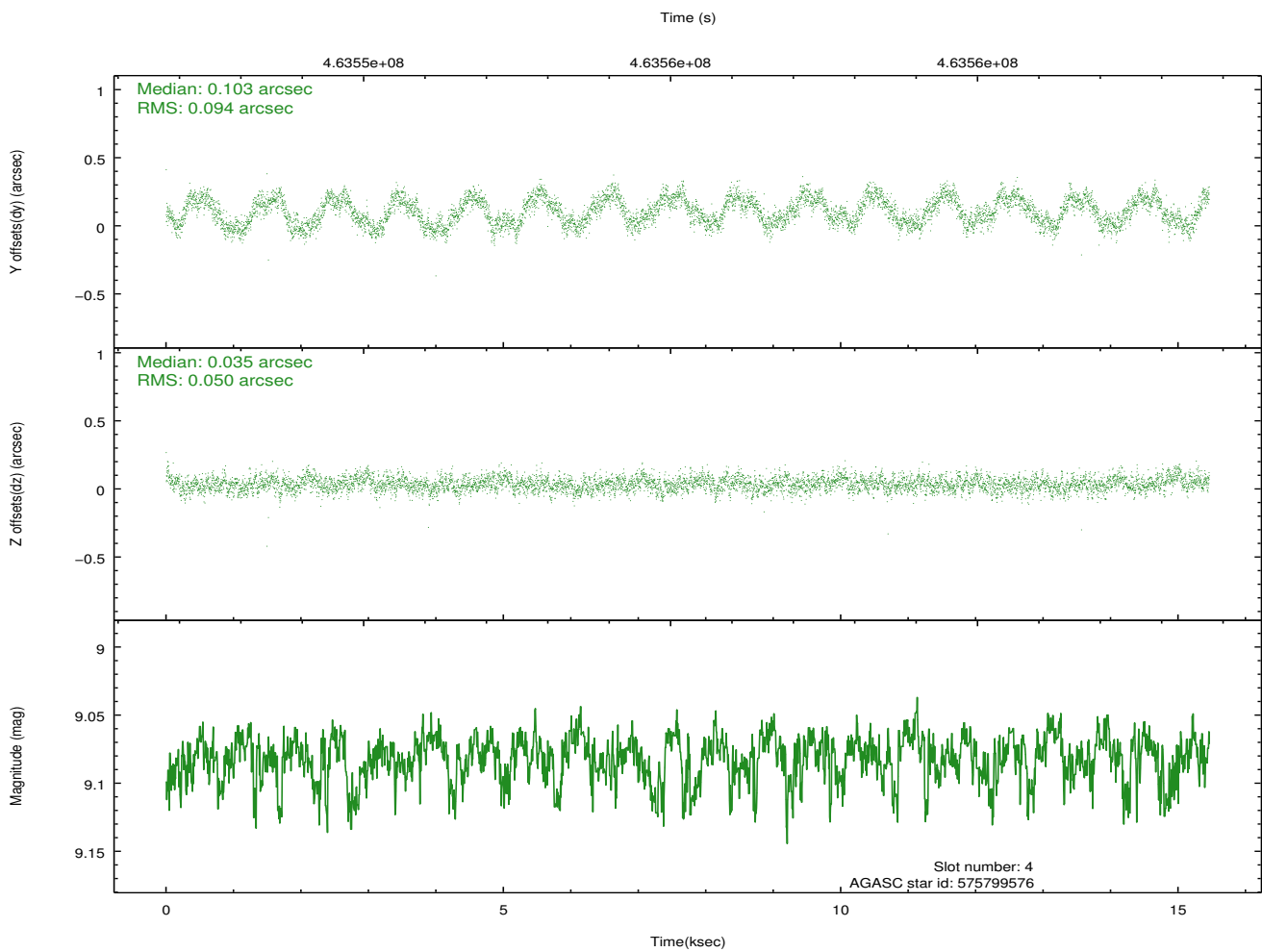
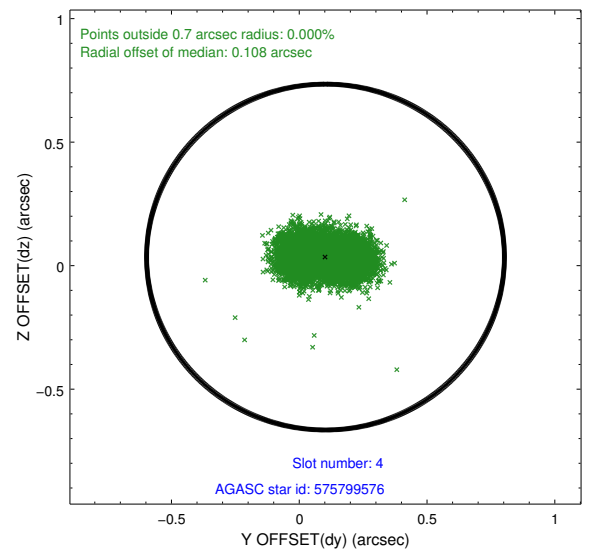
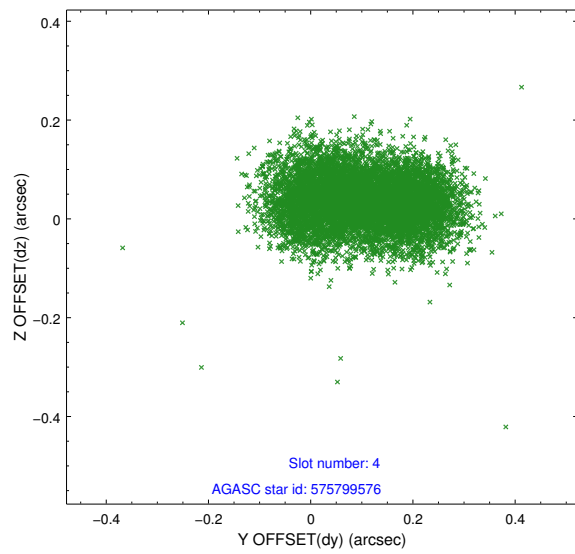
slot	status	id	mag	n_pts	med_dy	med_dz	dr1	dr2	ra	dec	mean_y	mean_z
0	FID	ACIS-S-2	6.94	3772	-0.092	-0.007	0.023	0.030	0.000000	0.000000	-769.96	-1737.93
1	FID	ACIS-S-4	7.02	3772	0.206	0.047	0.010	0.017	0.000000	0.000000	2143.49	170.31
2	FID	ACIS-S-5	7.06	3772	-0.143	-0.032	0.021	0.032	0.000000	0.000000	-1822.48	164.23
3	GUIDE	545260680	7.44	7541	0.137	0.132	0.077	0.119	178.918790	67.264924	-488.65	-1422.98
4	GUIDE	575799576	9.08	7538	0.103	0.035	0.116	0.176	177.974806	67.856242	-2207.16	382.88
5	GUIDE	575801016	6.81	7543	-0.098	-0.079	0.079	0.133	179.500958	67.812100	-150.16	675.38
6	GUIDE	575801584	9.42	7538	-0.076	0.170	0.126	0.209	180.993547	67.740618	1885.51	913.77
7	GUIDE	575799488	10.12	7488	-0.065	-0.246	0.168	0.275	181.436024	67.884951	2334.21	1568.80

2.4 Star Slots

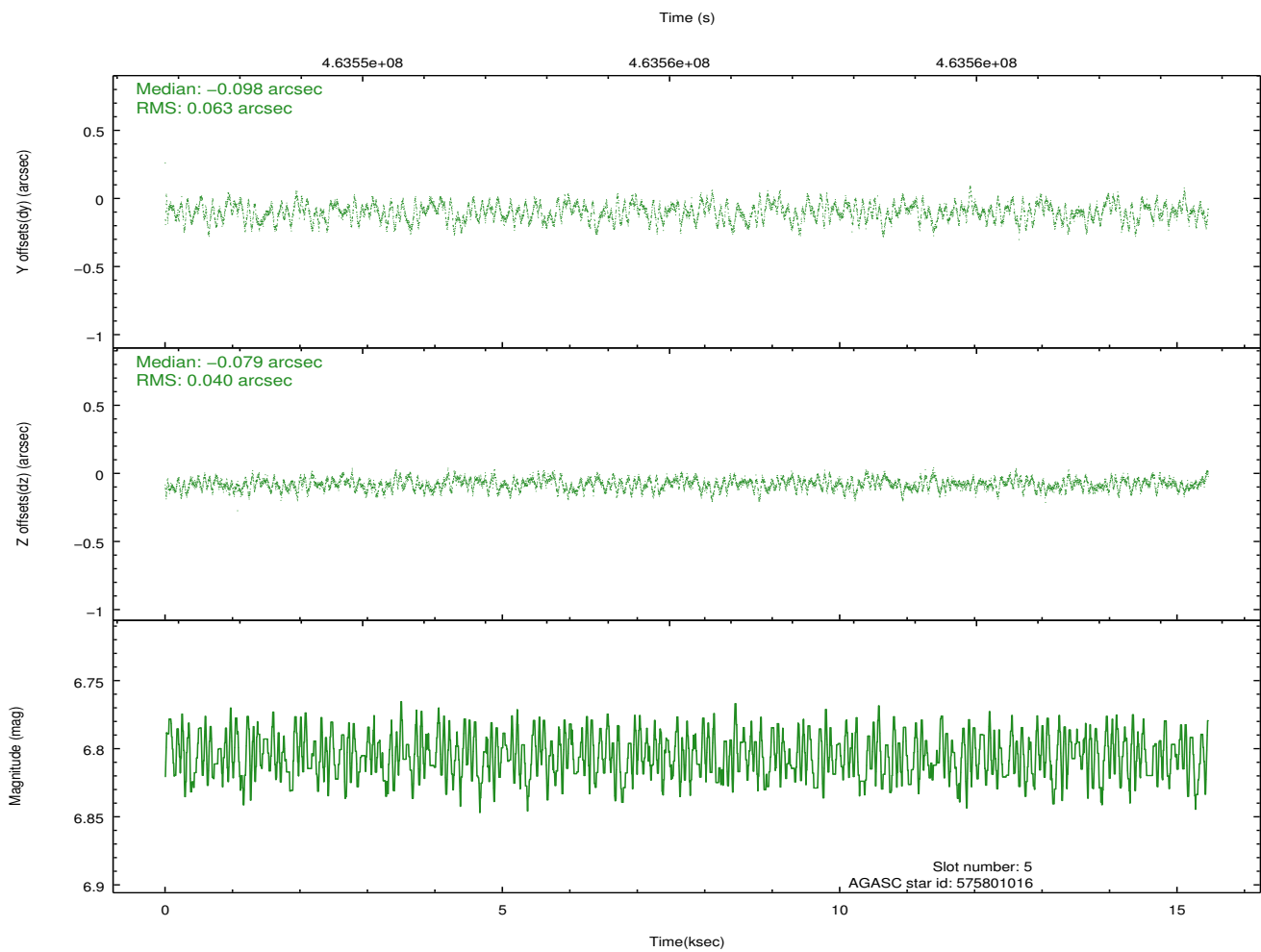
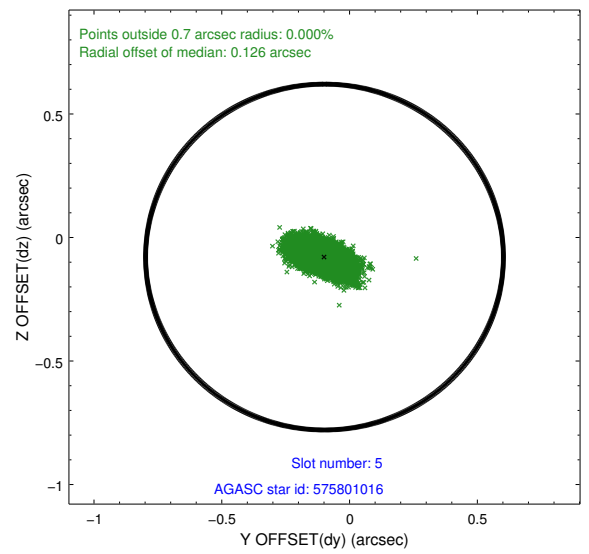
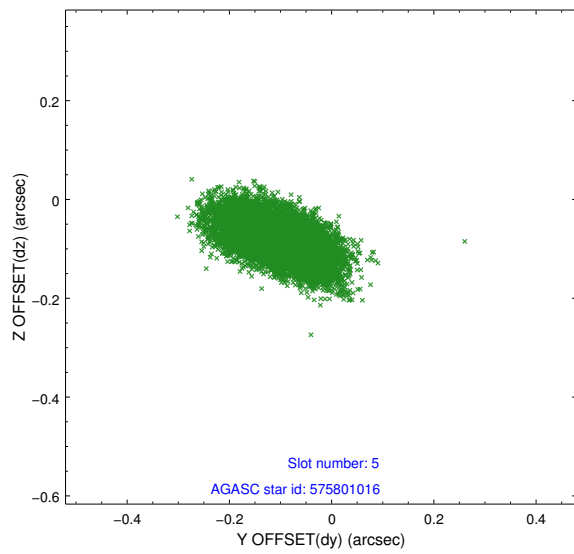
2.4.1 Slot 3



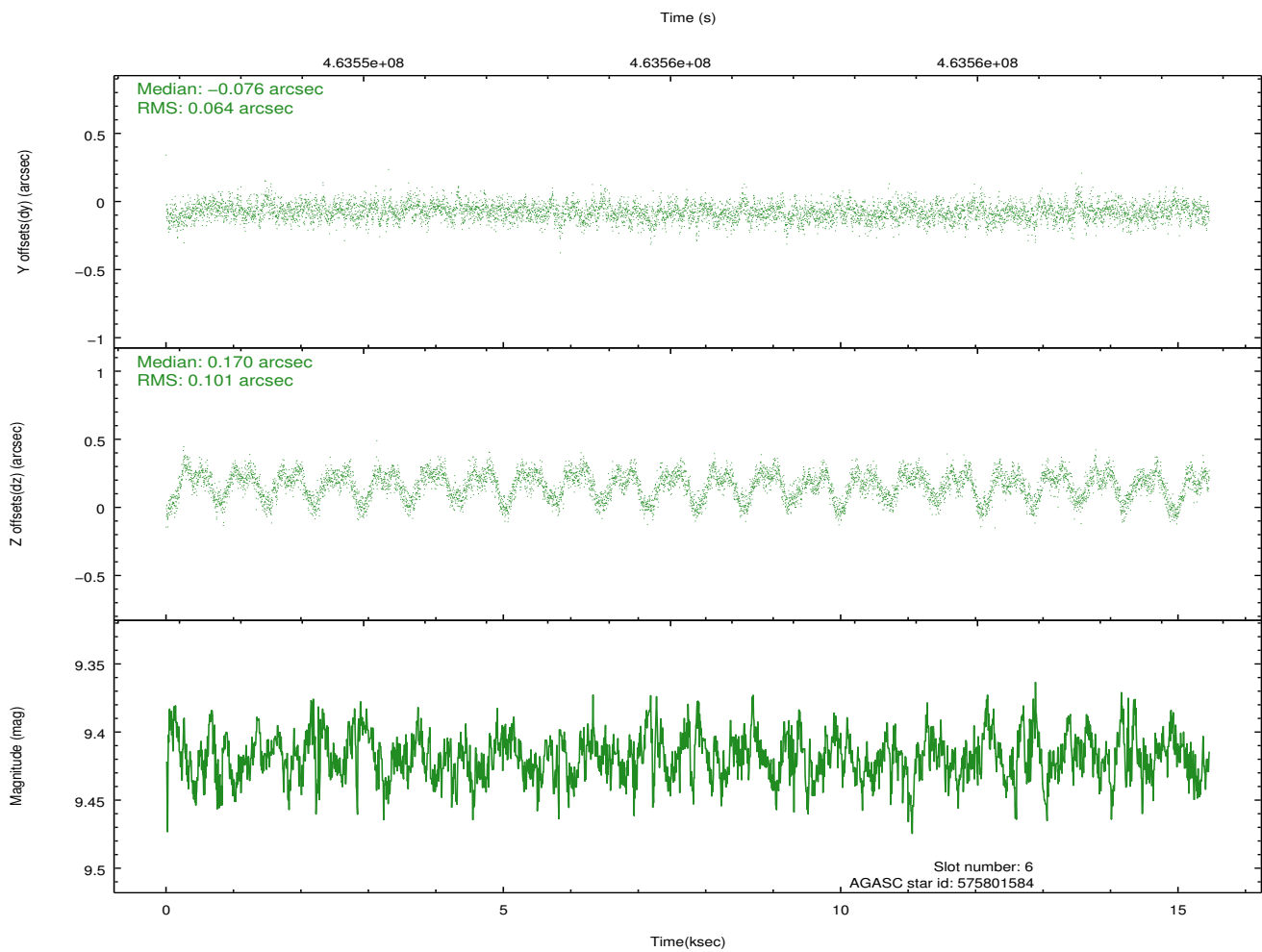
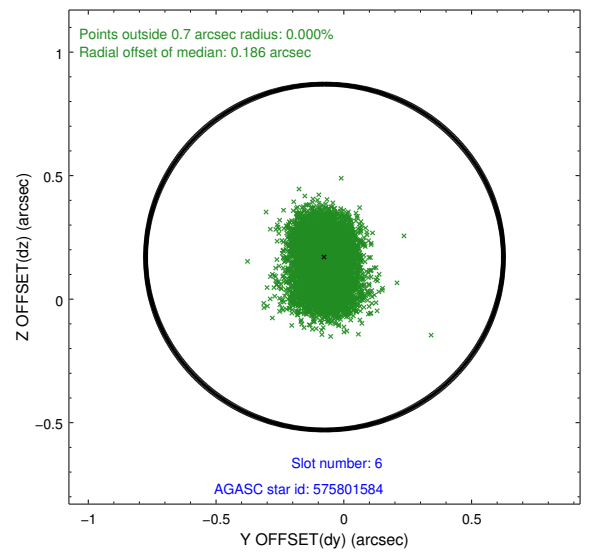
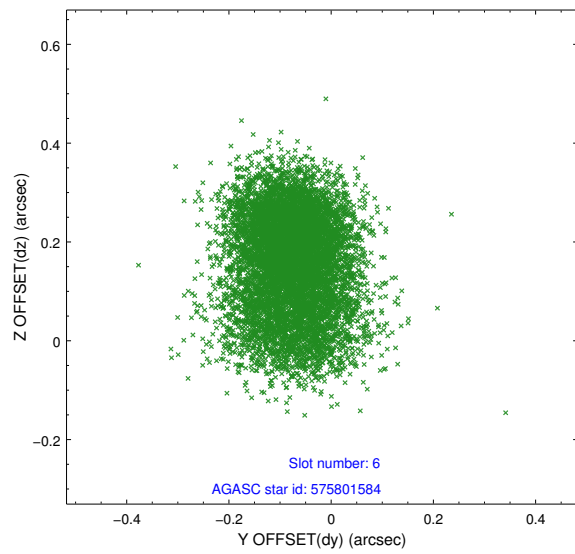
2.4.2 Slot 4



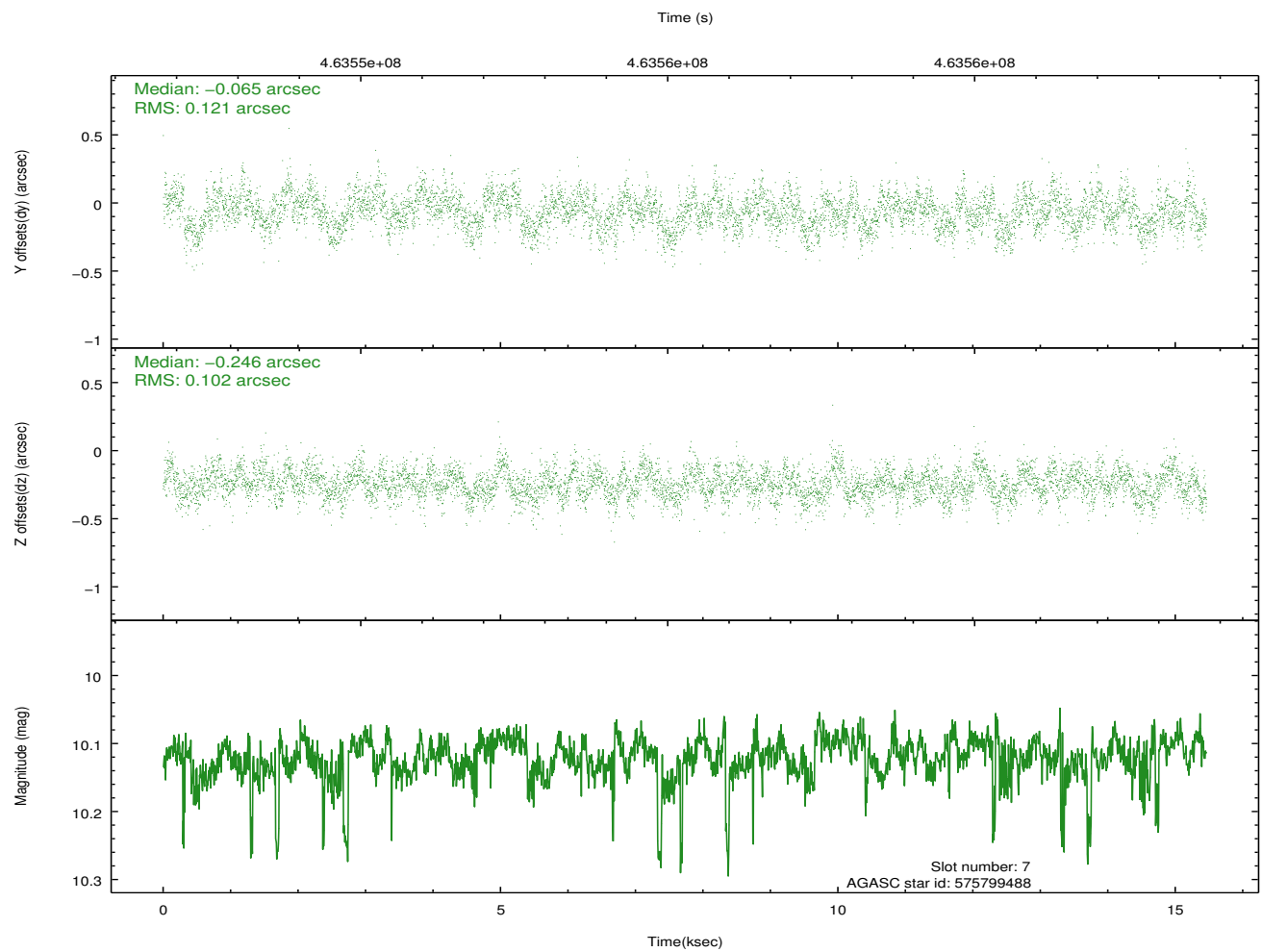
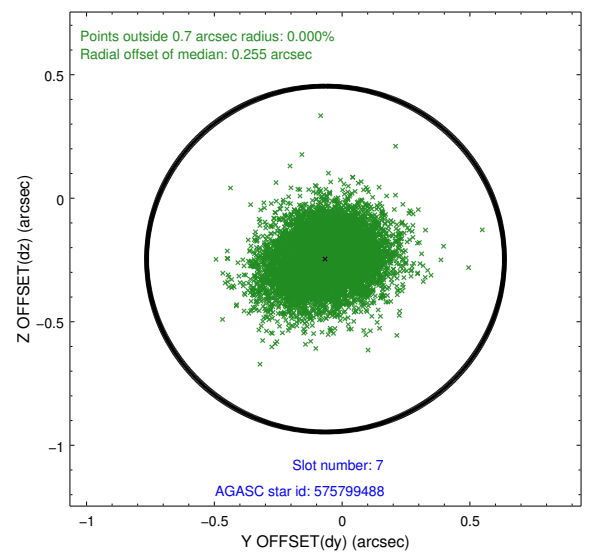
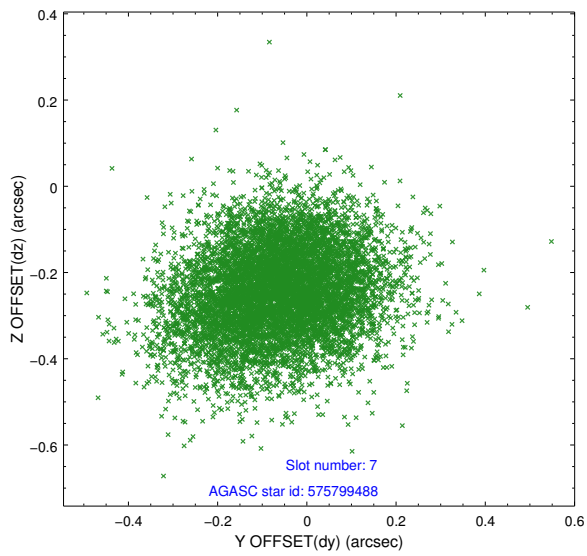
2.4.3 Slot 5



2.4.4 Slot 6

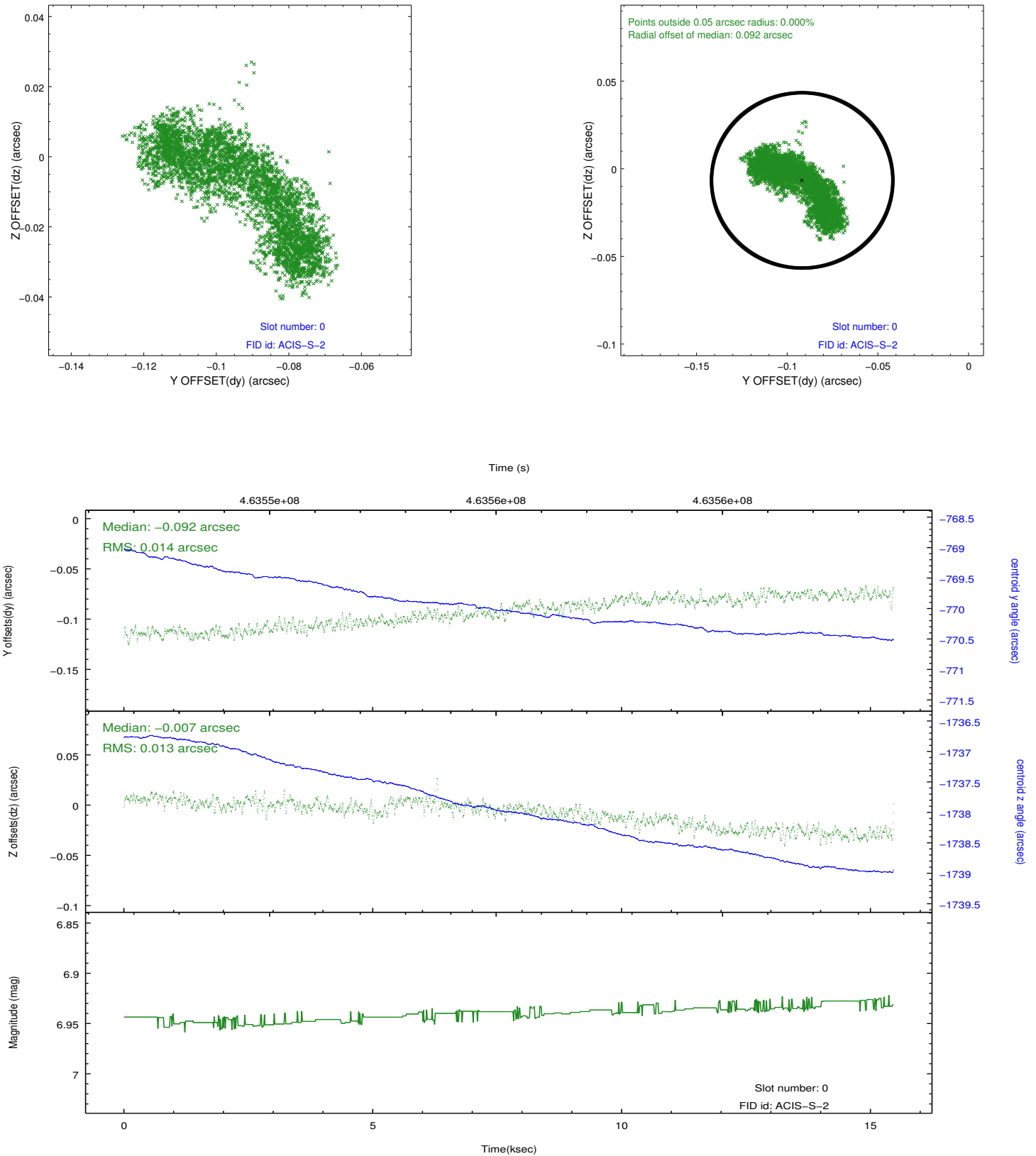


2.4.5 Slot 7

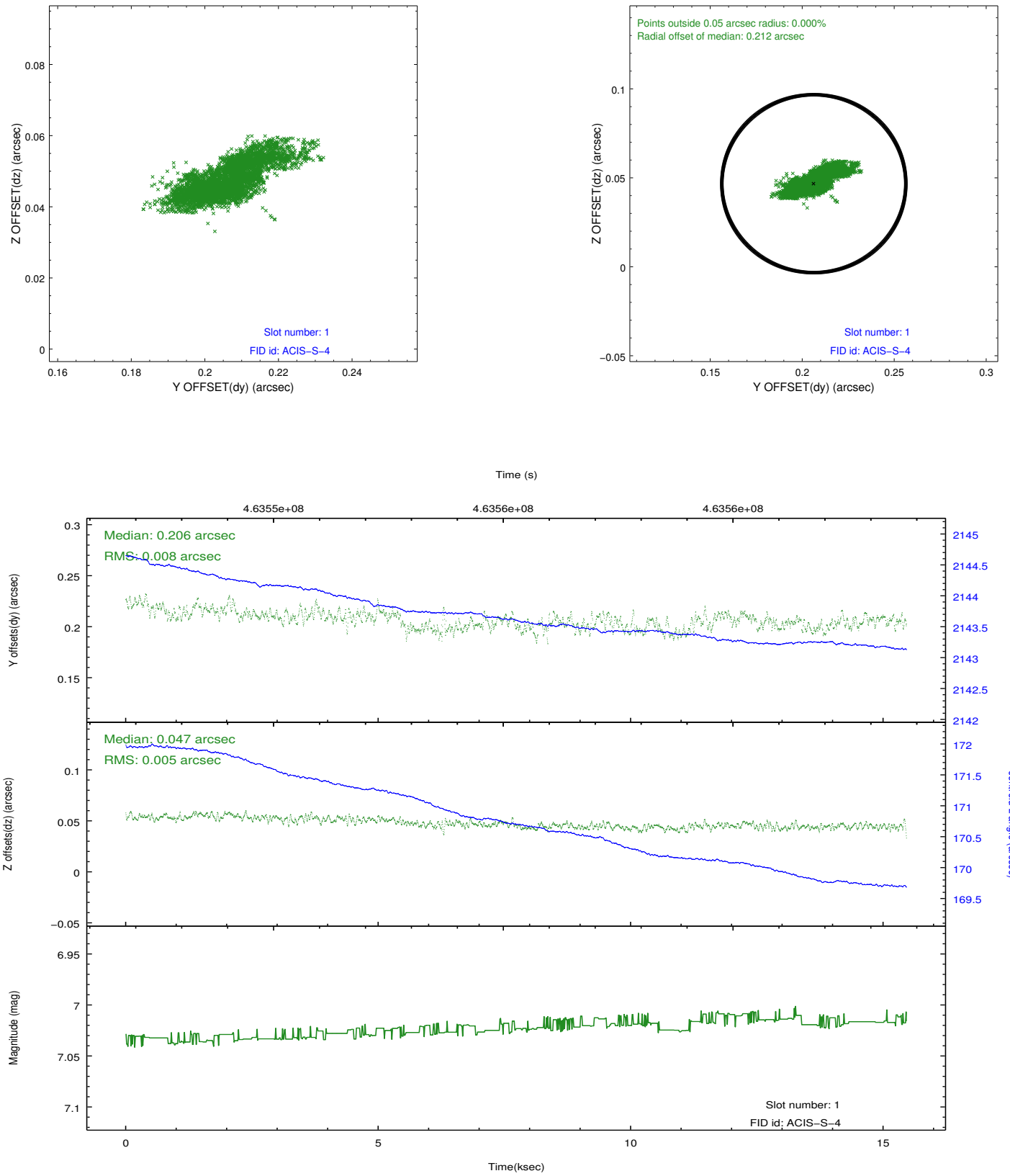


2.5 FID Slots

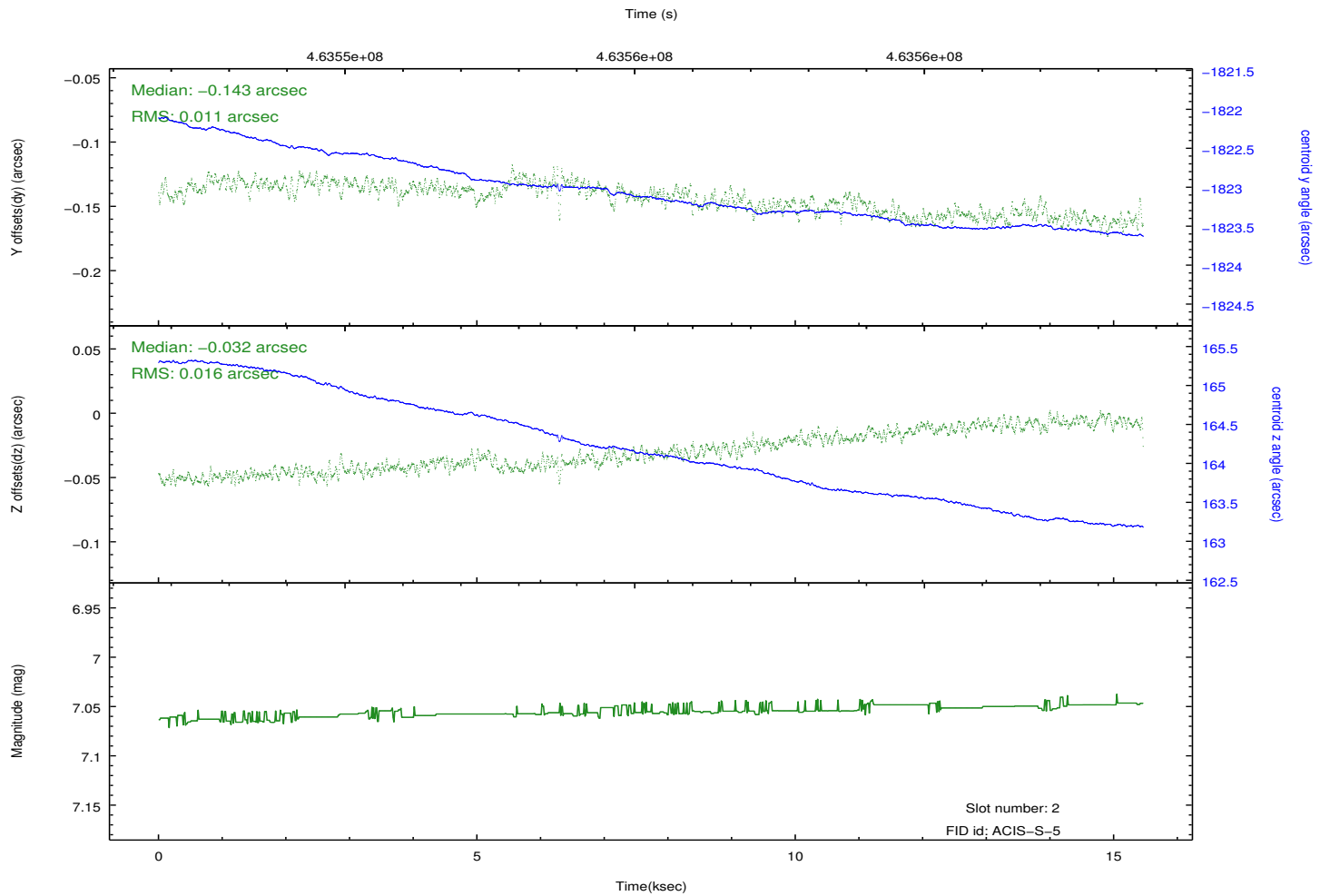
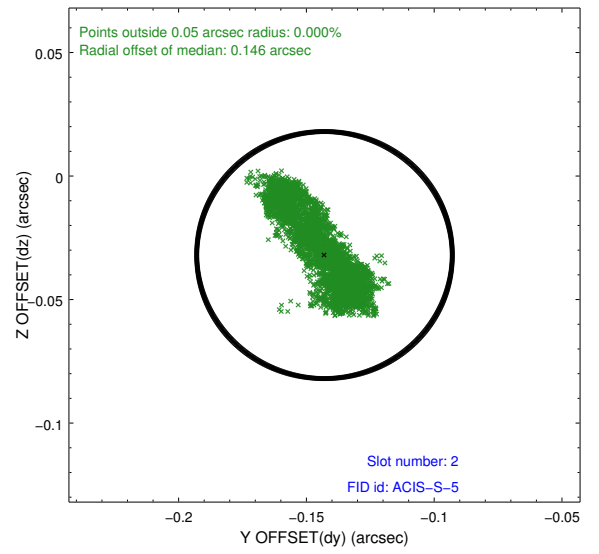
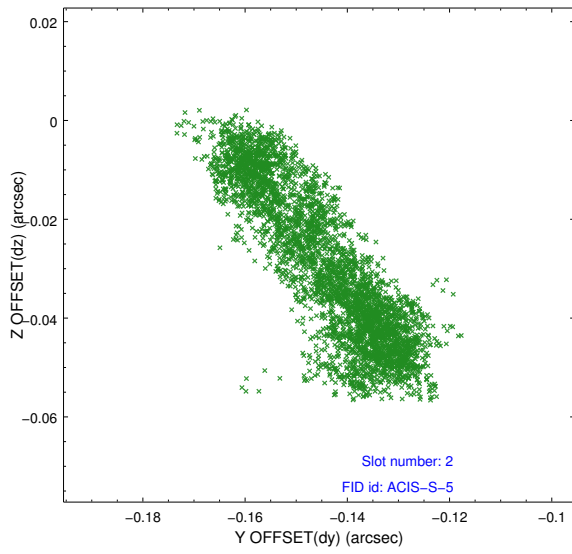
2.5.1 Slot 0



2.5.2 Slot 1



2.5.3 Slot 2



A Summary

A.1 Status

V&V Scientist	Joy Nichols
V&V Date (YYYY-MM-DD)	2012.09.11
V&V Edition	1
V&V Disposition and Status	OK
V&V Charge Time	15.069100115895

A.2 Comments