

V&V Reference Report

L2 ASCDS Version : 8.4.3

Observation 13395 - L2 Version 2
Chandra X-Ray Center

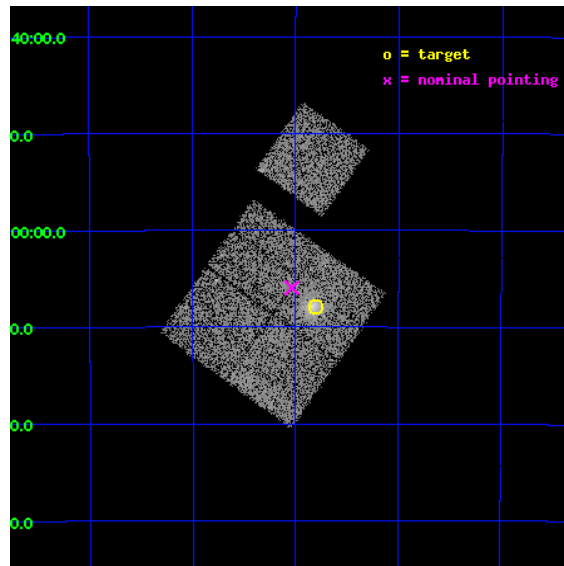
L2 Processing Date : Feb 22 2012

Contents

1	Front	2
2	OBI	3
2.1	OBI	3
2.1.1	Images	3
2.1.2	Bias	3
2.1.3	Parameters	4
2.1.4	Events	4
2.2	Compared Parameters	5
2.3	Aspect	6
2.4	Star Slots	9
2.4.1	Slot 3	9
2.4.2	Slot 4	10
2.4.3	Slot 5	11
2.4.4	Slot 6	12
2.4.5	Slot 7	13
2.5	FID Slots	14
2.5.1	Slot 0	14
2.5.2	Slot 1	15
2.5.3	Slot 2	16
A	Summary	17
A.1	Status	17
A.2	Comments	17

1 Front

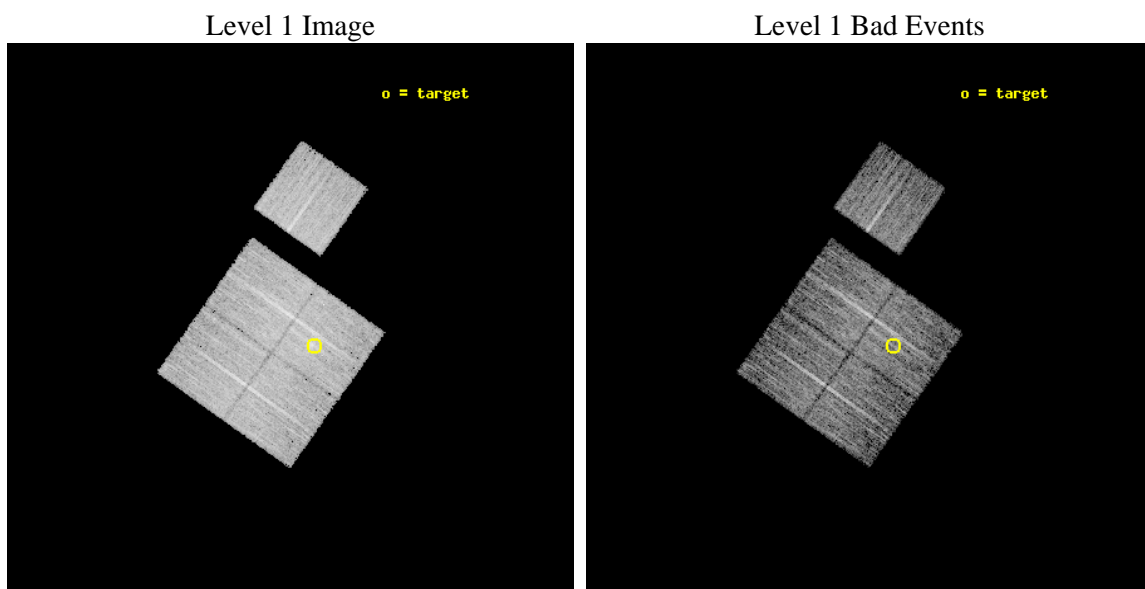
seq_num	801082	Sequence number
obs_id	13395	Observation id
title	Chandra Observations of a Sample of High Redshift SZE Galaxy Clusters	Proposal title
observer	Dr Stephen Murray	Principal investigator
object	SPT-CLJ0040-4407	Source name
dtycycle	0	
cycle	P	events from which exps? Prim/Second/Both
ra_targ	10.202083	Observer's specified target RA [deg]
dec_targ	-44.131194	Observer's specified target Dec [deg]
ra_nom	10.259158965299	Nominal RA [deg]
dec_nom	-44.09926267123	Nominal Dec [deg]
roll_nom	35.38129876765	Nominal Roll [deg]
revision	2	Processing version of data
ontime	8053.7081657052	Sum of GTIs [s]
livetime	7948.4805394666	Livetime [s]
ontime0	8053.5850456953	Sum of GTIs [s]
ontime1	8050.4850854278	Sum of GTIs [s]
ontime2	8050.526214838	Sum of GTIs [s]
ontime3	8053.7081657052	Sum of GTIs [s]
ontime6	8053.544005692	Sum of GTIs [s]
l2events	28127	Number of level 2 events



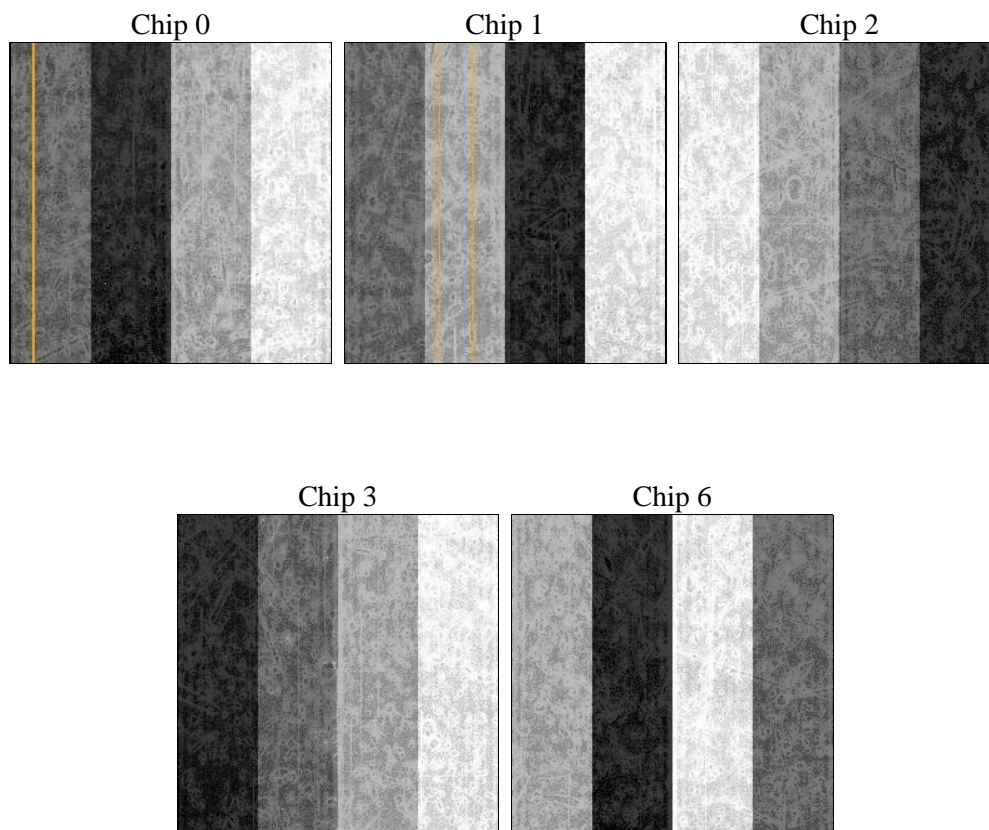
2 OBI

2.1 OBI

2.1.1 Images



2.1.2 Bias



2.1.3 Parameters

obi_num	0	Obi number	sched_exp_time	8000.000000	[s] Scheduled observation exposure time
ascdsver	8.4.3	Processing system revision	ontime	8053.7081657052	Sum of GTIs [s]
caldbver	4.4.8	 	ontime0	8053.5850456953	Sum of GTIs [s]
date	2012-02-22T07:34:36	Date and time of file creation	ontime1	8050.4850854278	Sum of GTIs [s]
revision	2	Processing version of data	ontime2	8050.526214838	Sum of GTIs [s]
			ontime3	8053.7081657052	Sum of GTIs [s]
			ontime6	8053.544005692	Sum of GTIs [s]
			l1events	263484	Number of level 1 events

2.1.4 Events

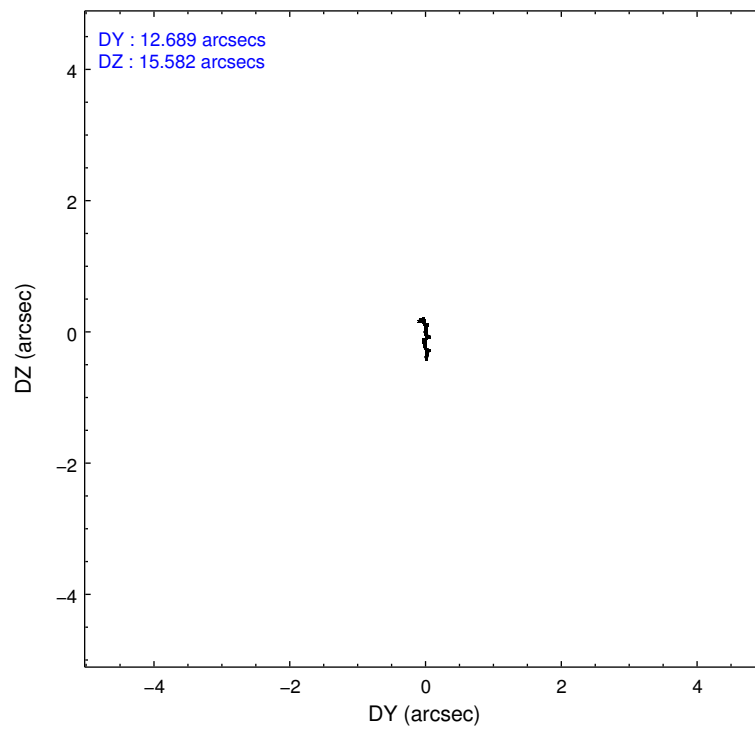
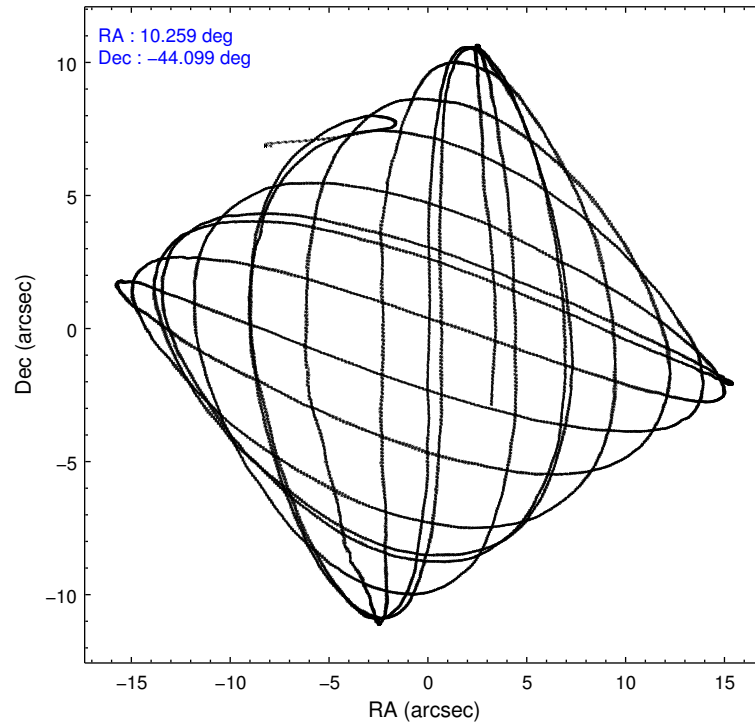
	ccd 0	ccd 1	ccd 2	ccd 3	ccd 6
level 1 events	49529	50020	55308	55838	52789
rejected events	43365	43134	49386	47794	46652
rejected %	87%	86%	89%	85%	88%

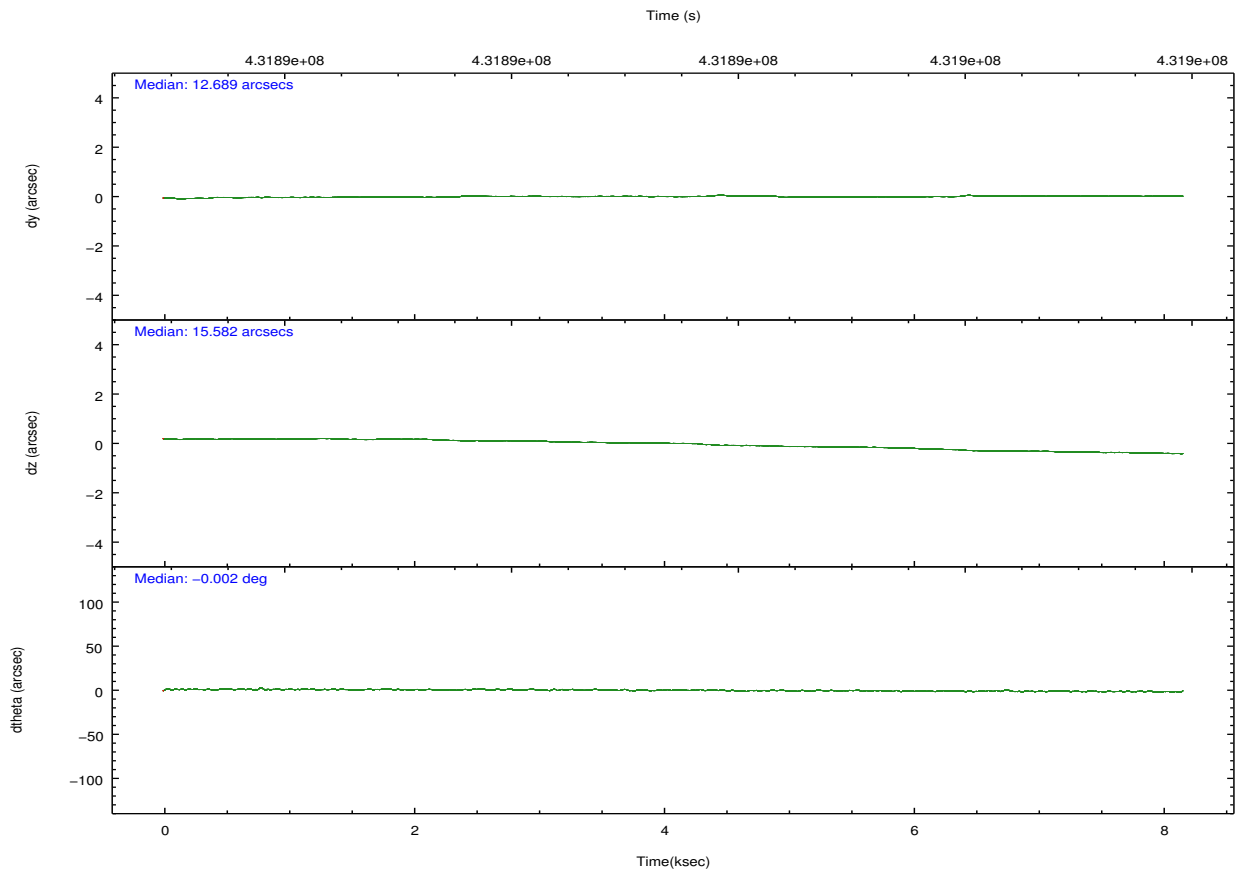
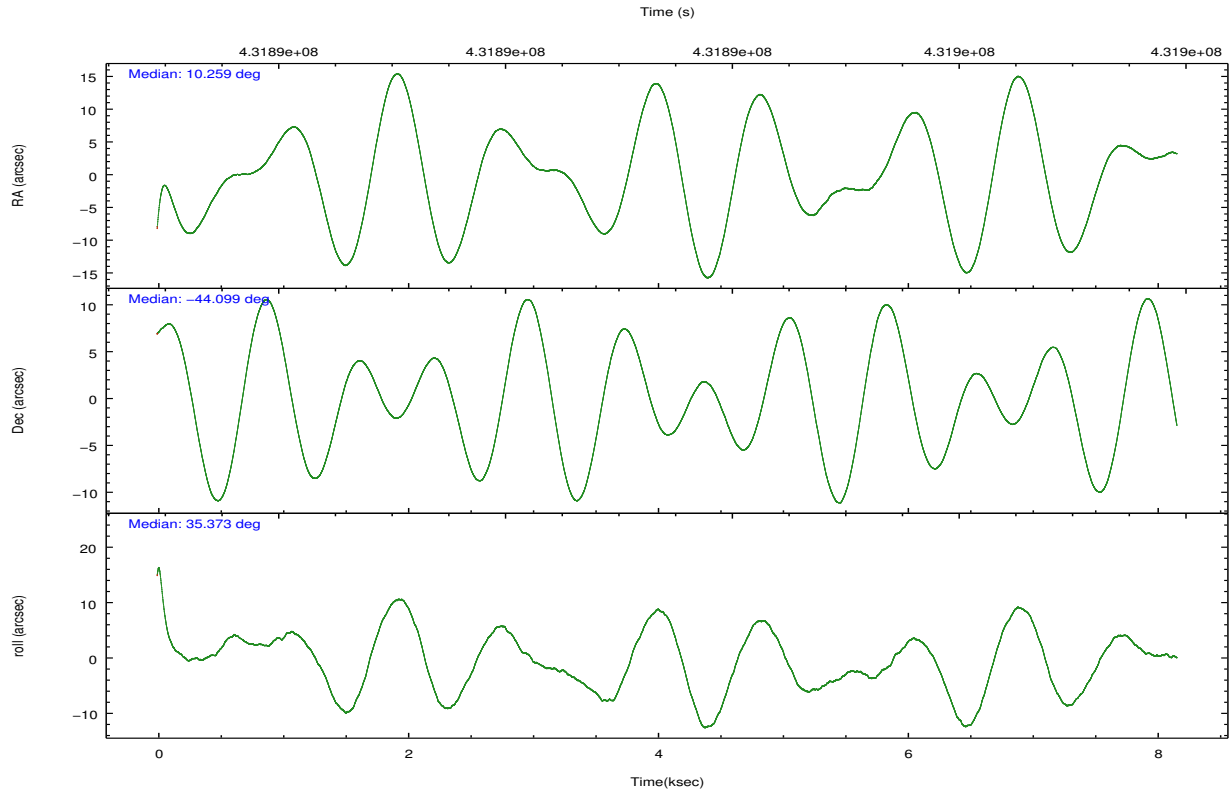
	ccd 0	ccd 1	ccd 2	ccd 3	ccd 6
grade 0 events	2191	2468	2252	3940	2128
	4%	4%	4%	7%	4%
grade 1 events	31	29	41	36	24
	0%	0%	0%	0%	0%
grade 2 events	1473	1695	1374	1563	1452
	2%	3%	2%	2%	2%
grade 3 events	658	632	536	635	608
	1%	1%	0%	1%	1%
grade 4 events	655	699	650	657	630
	1%	1%	1%	1%	1%
grade 5 events	2164	2459	2188	2560	2565
	4%	4%	3%	4%	4%
grade 6 events	1190	1395	1118	1253	1326
	2%	2%	2%	2%	2%
grade 7 events	41167	40643	47149	45194	44056
	83%	81%	85%	80%	83%

2.2 Compared Parameters

Parameter	Planned	Actual	Parameter	Planned	Actual
Instrument	ACIS	ACIS	Obspar format version number	7	7
Detector	ACIS-01236	ACIS-01236	Obspar file type	PREDICTED	ACTUAL
Grating	NONE	NONE	Obspar update status	NONE	UPDATED
Data mode	VFAINT	VFAINT	CCD I0 on	Y	Y
Observation mode	POINTING	POINTING	CCD I1 on	Y	Y
[deg] Pointing RA	10.243393	10.25915896529903	CCD I2 on	Y	Y
[deg] Pointing Dec	-44.124378	-44.09926267123049	CCD I3 on	Y	Y
[deg] Pointing Roll	35.161607	35.38129876764986	CCD S0 on	N	N
[mm] SIM focus pos	-0.782348	-0.7809083437167272	CCD S1 on	N	N
[mm] SIM defocus	0	0.001439871863259334	CCD S2 on	O1	Y
[mm] SIM translation stage pos	-225.840463	-225.8433433320239	CCD S3 on	N	N
[mm] SIM translation stage offset	-7.752	-7.749109670905796	CCD S4 on	N	N
[s] Observation start time (MET)	431889494.184000	431888376.63896	CCD S5 on	N	N
Observation start date	2011-09-08T17:17:08	2011-09-08T16:59:36	Number of optional ACIS chips dropped	0	0
[s] Observation end time (MET)	431897494.184000	431898064.93947	On-chip summing requested	N	N
Observation end date	2011-09-08T19:30:28	2011-09-08T19:41:04	Subarray requested	NONE	NONE
Read mode	TIMED	TIMED	Alternating exposures requested	N	N
			[s] Primary exposure time	0.000000	3.1

2.3 Aspect



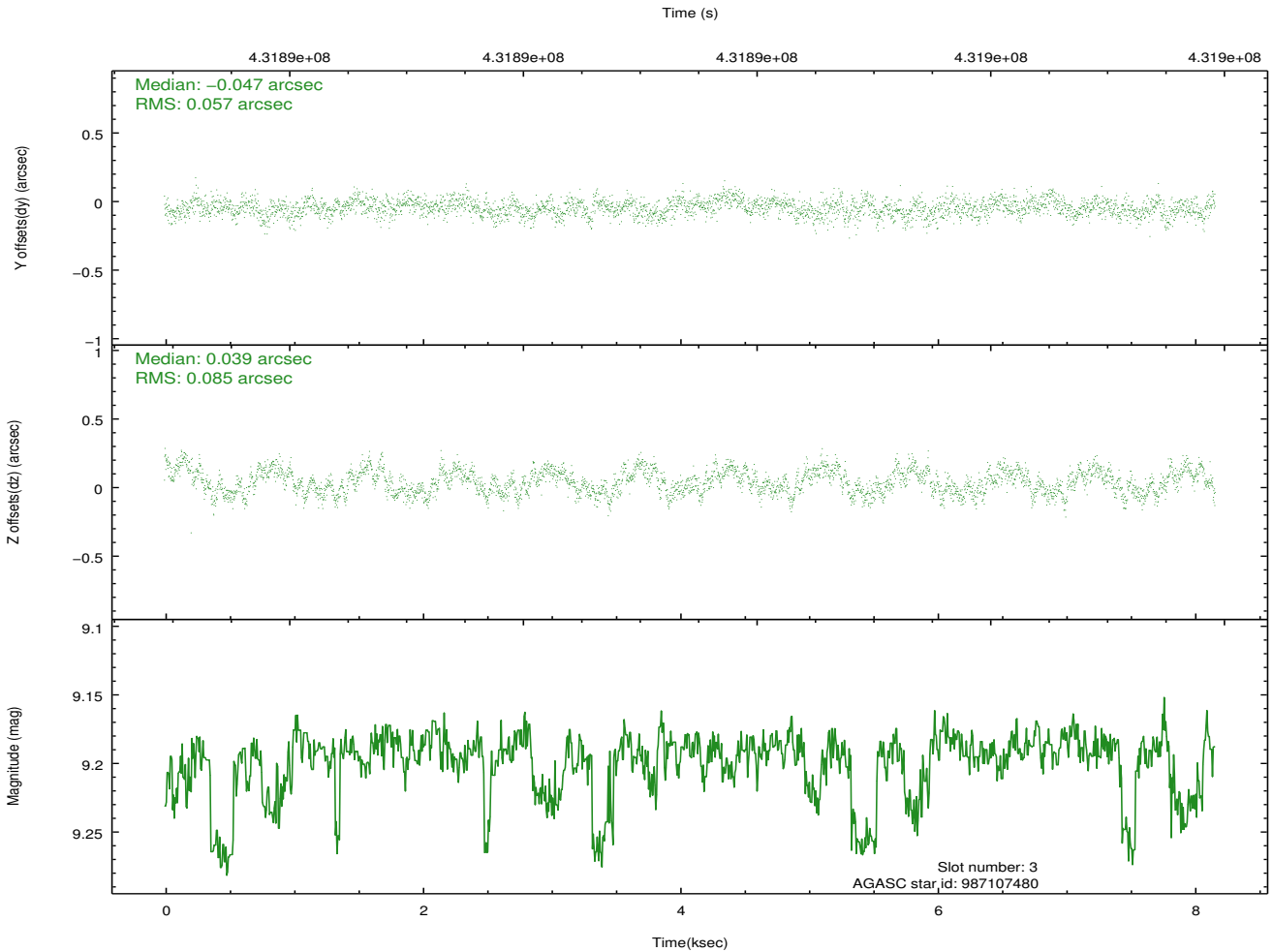
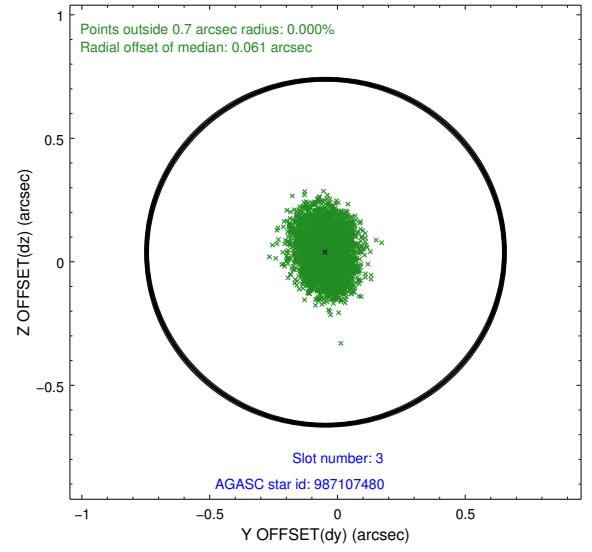
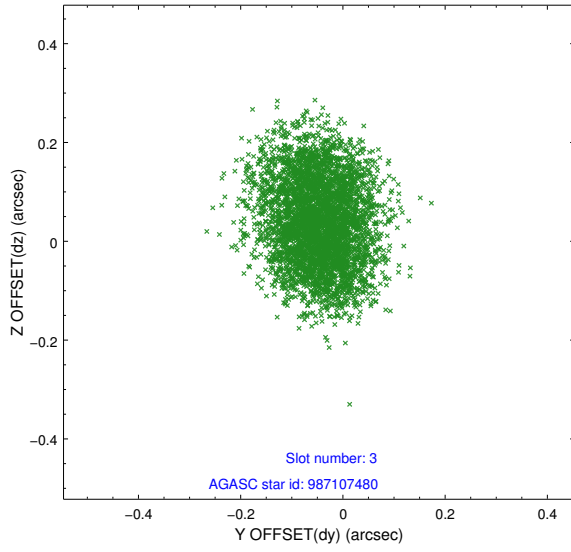


Slot Statistics

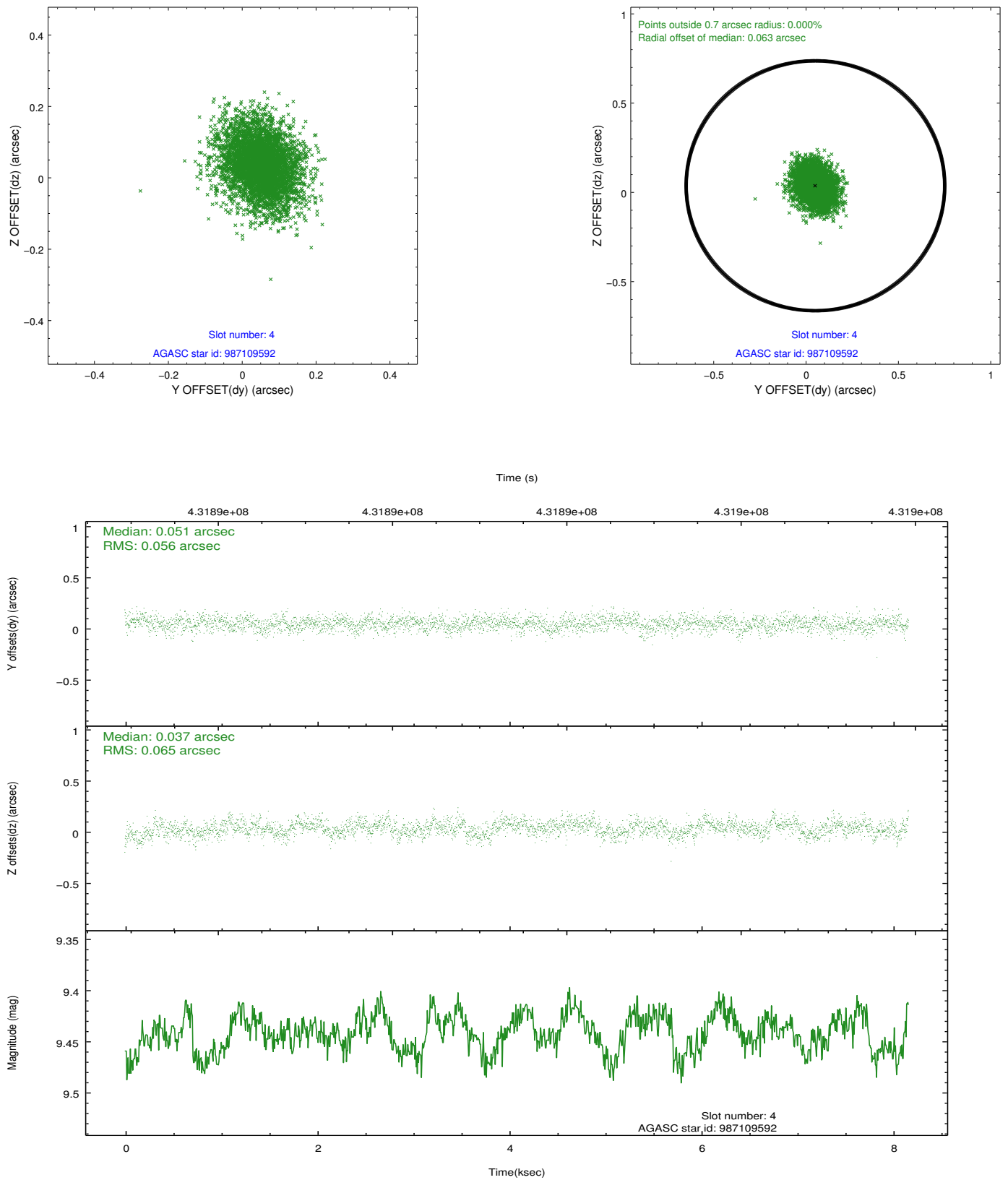
slot	status	id	mag	n_pts	med_dy	med_dz	dr1	dr2	ra	dec	mean_y	mean_z
0	FID	ACIS-I-1	7.00	1992	0.139	-0.123	0.012	0.021	0.000000	0.000000	926.84	-998.34
1	FID	ACIS-I-5	6.99	1992	-0.293	0.107	0.009	0.014	0.000000	0.000000	-1821.33	898.93
2	FID	ACIS-I-6	7.01	1990	0.062	0.087	0.009	0.015	0.000000	0.000000	391.54	1544.21
3	GUIDE	987107480	9.19	3975	-0.047	0.039	0.113	0.174	9.652904	-44.008109	-1012.15	1217.98
4	GUIDE	987109592	9.44	3983	0.051	0.037	0.091	0.150	9.581379	-44.105192	-1363.35	1036.23
5	GUIDE	988024760	9.23	3976	0.183	0.061	0.111	0.186	10.622927	-44.532540	-50.79	-1764.08
6	GUIDE	988025296	7.54	3983	-0.112	0.020	0.063	0.102	10.849496	-44.123308	1279.36	-904.10
7	GUIDE	988025592	8.69	3981	-0.071	-0.155	0.070	0.112	10.470667	-43.604410	1562.69	1188.05

2.4 Star Slots

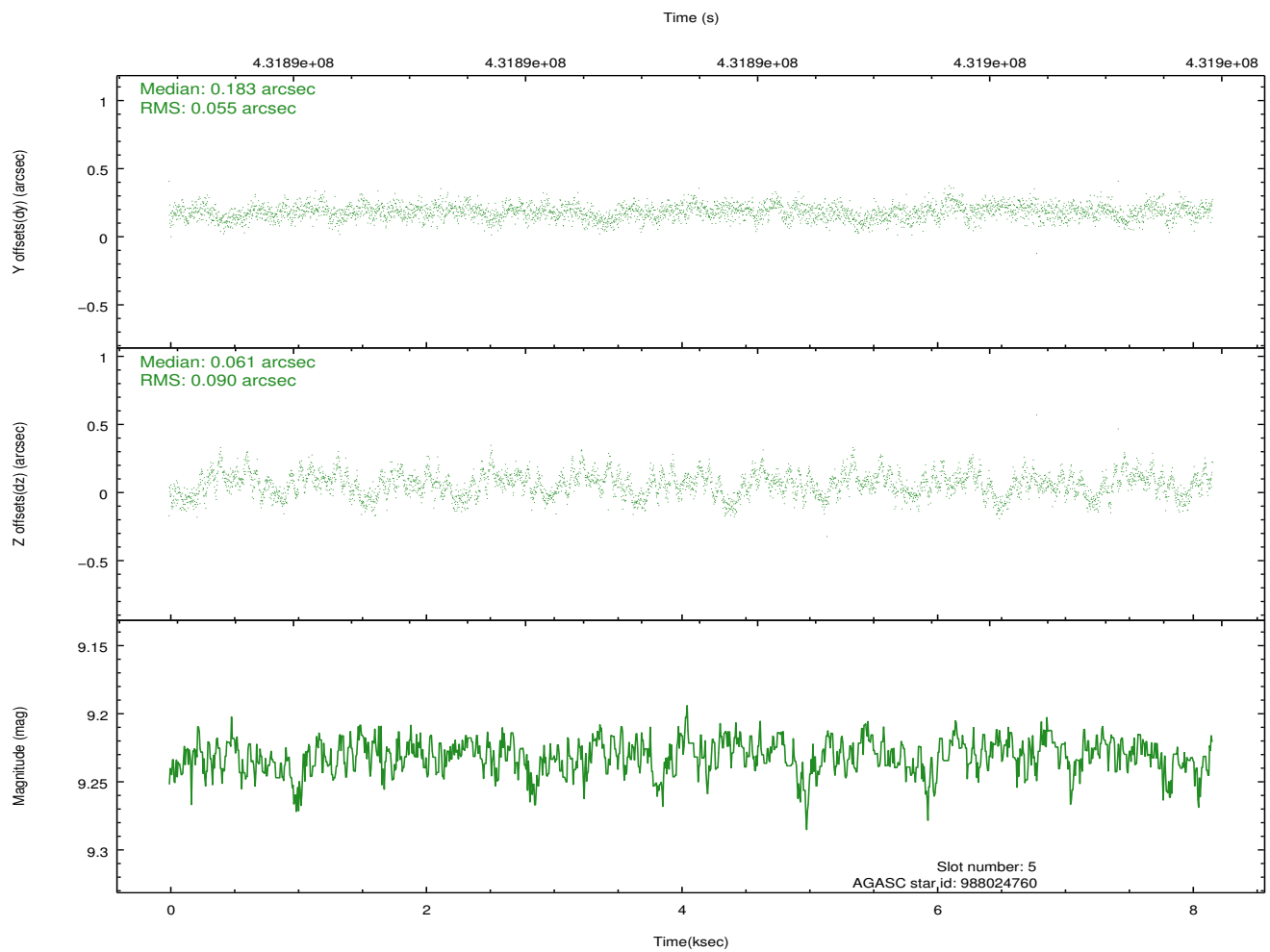
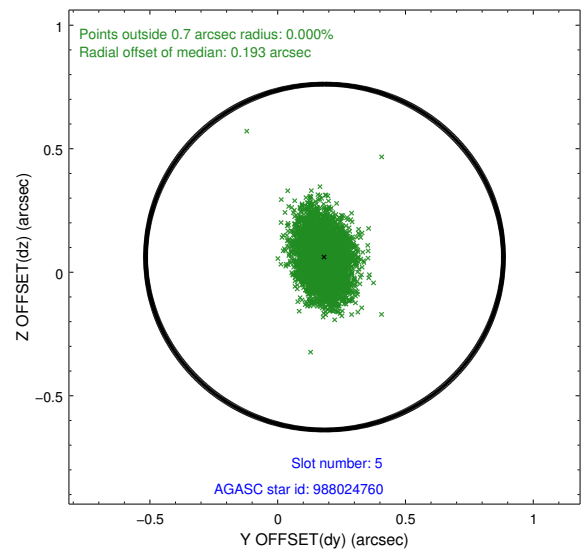
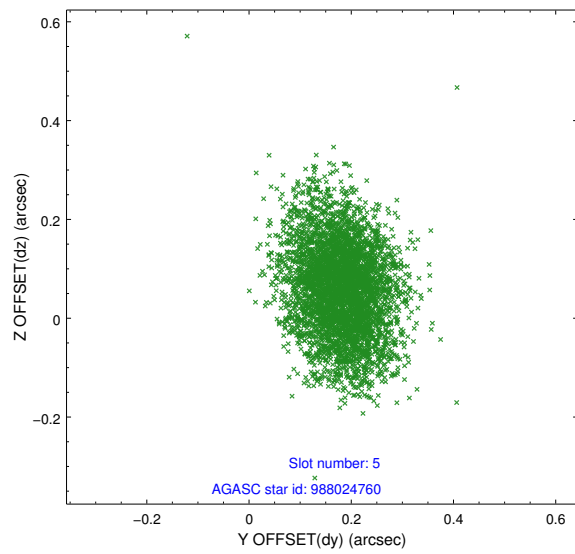
2.4.1 Slot 3



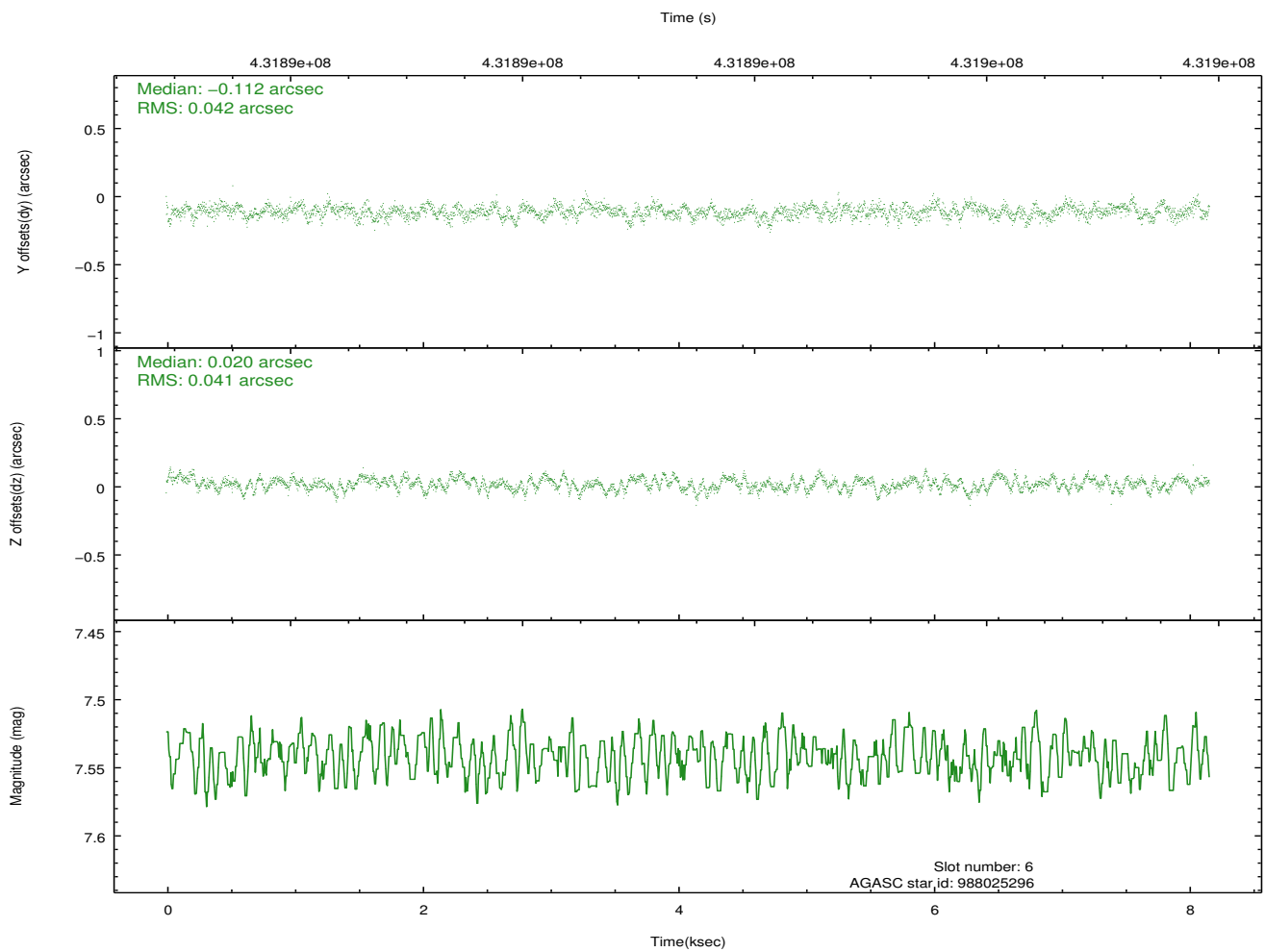
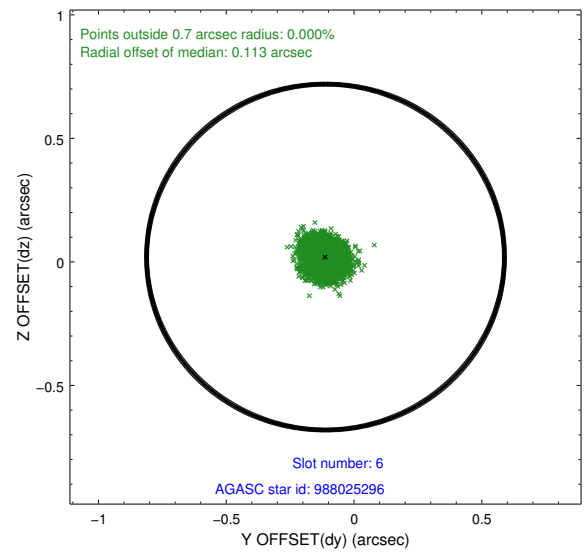
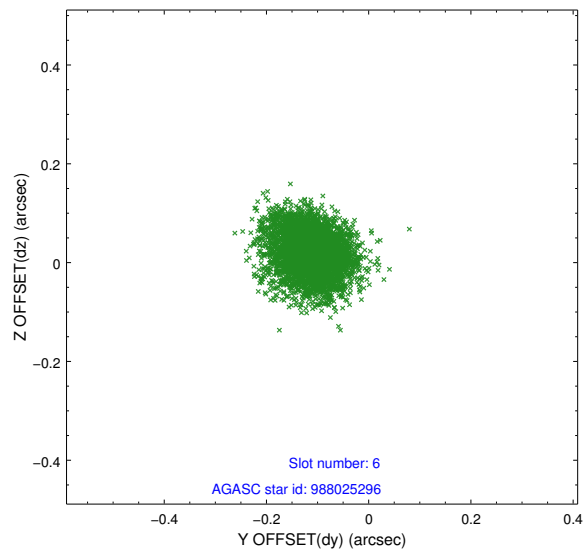
2.4.2 Slot 4



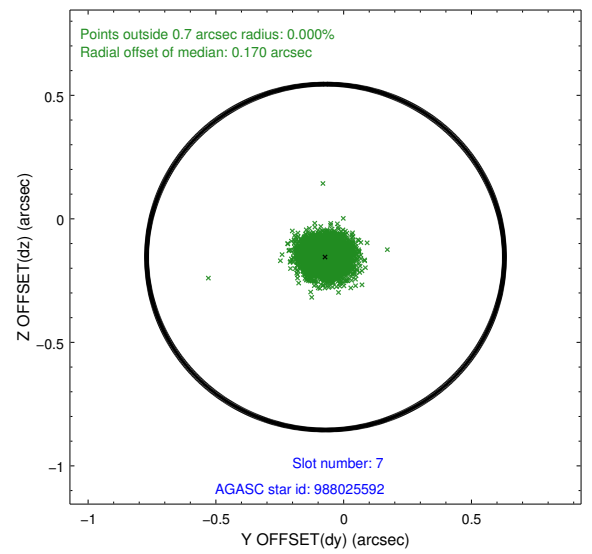
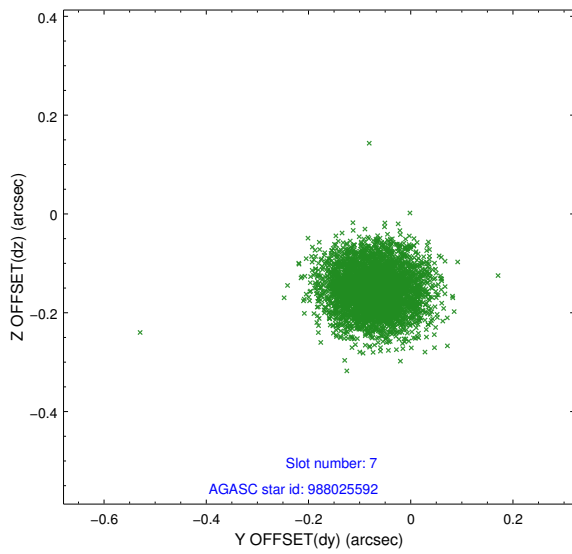
2.4.3 Slot 5



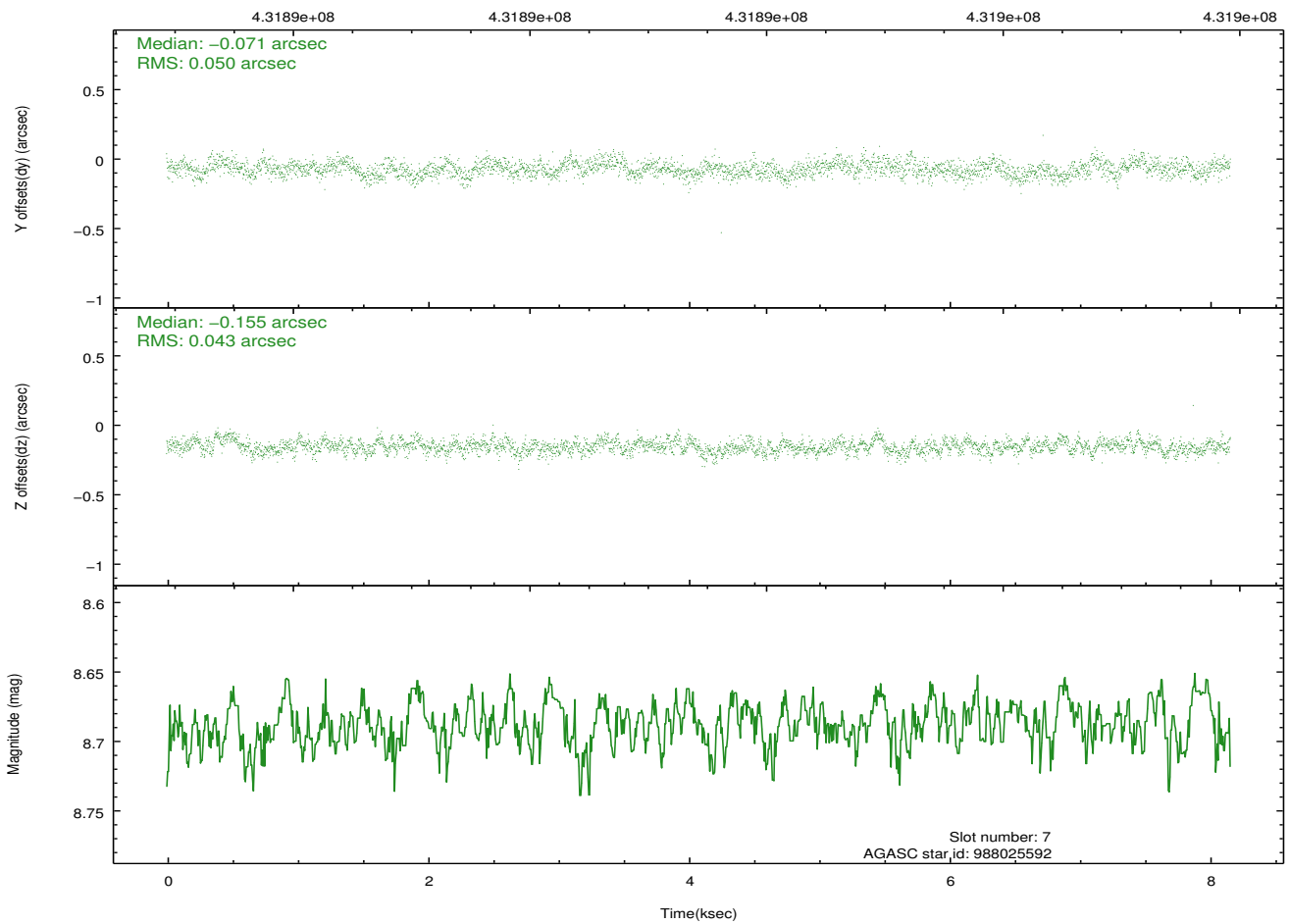
2.4.4 Slot 6



2.4.5 Slot 7

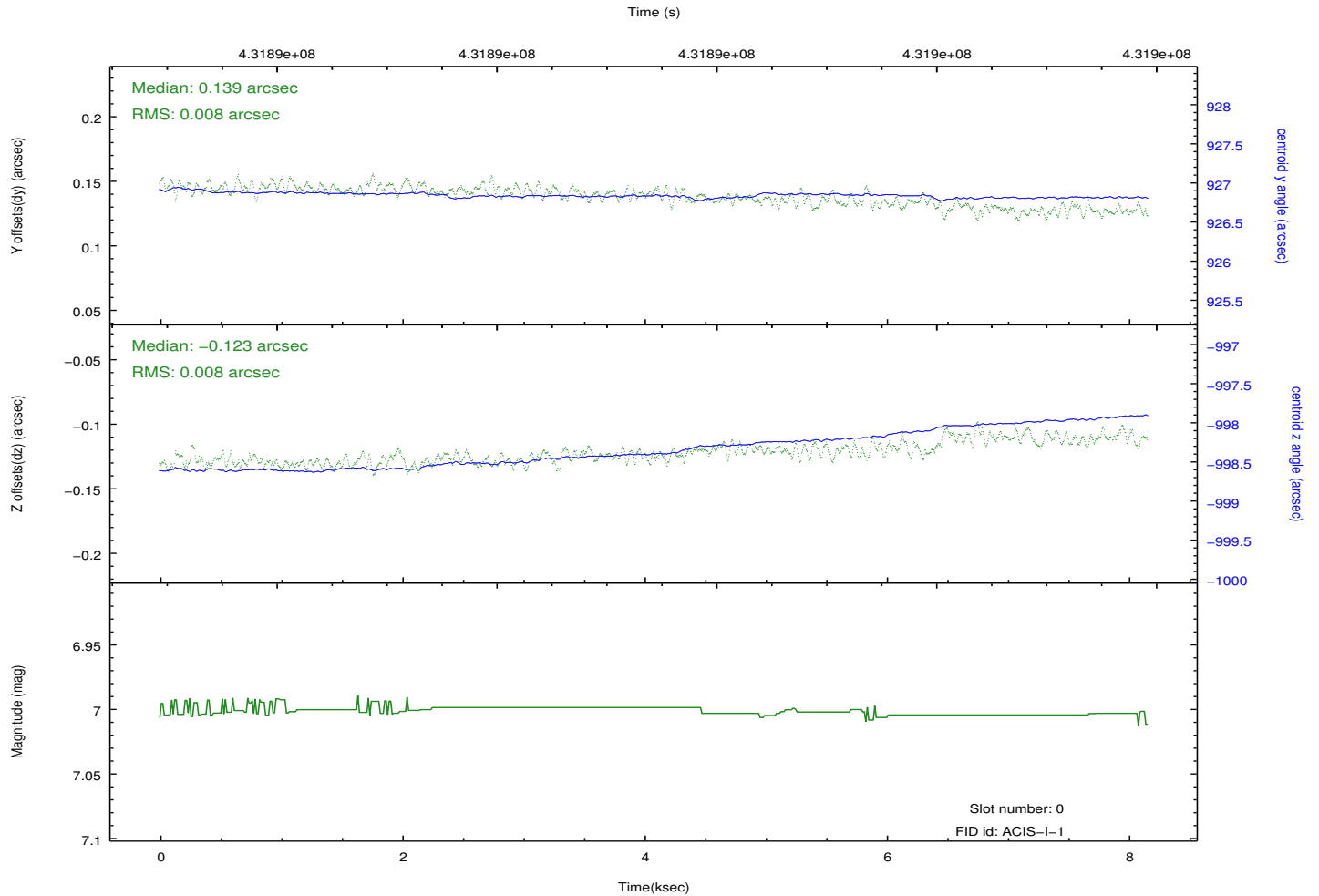
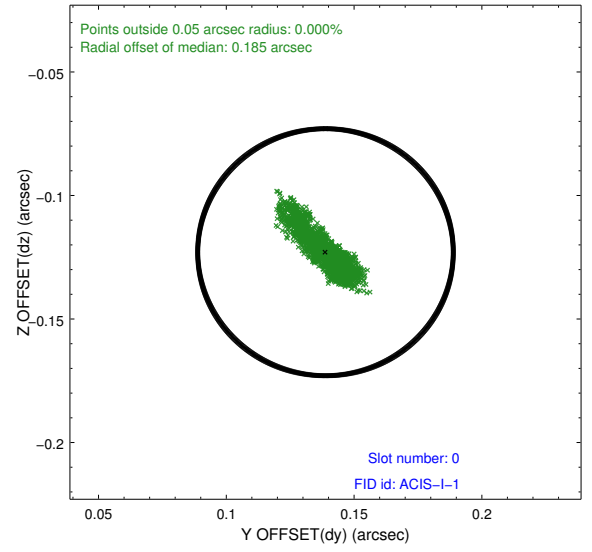
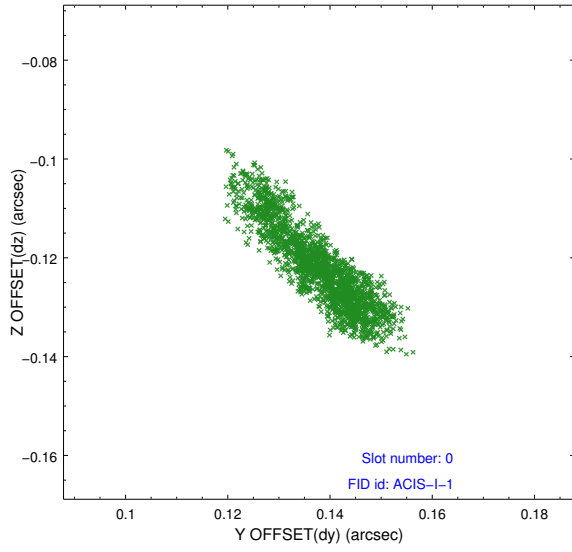


Time (s)

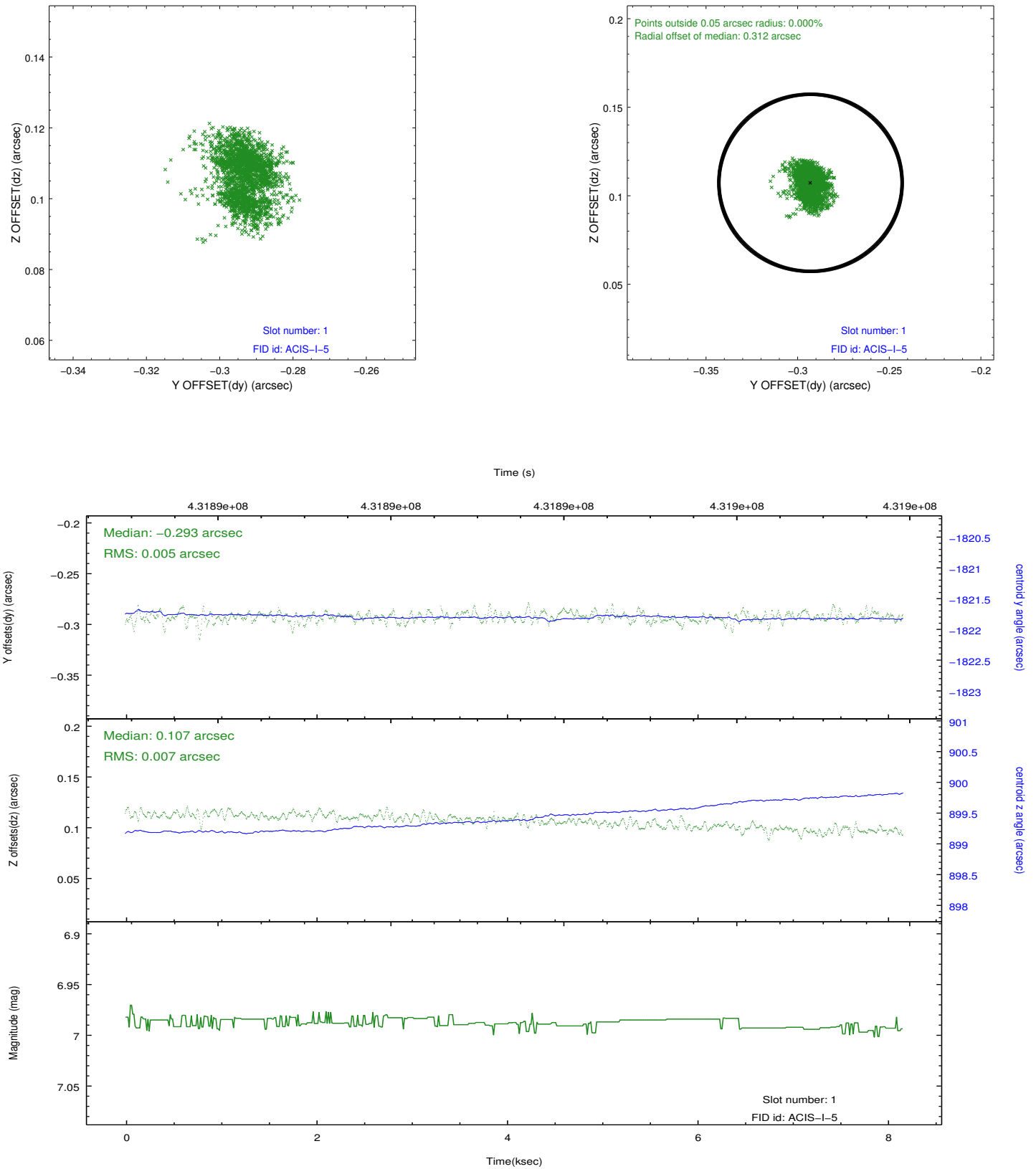


2.5 FID Slots

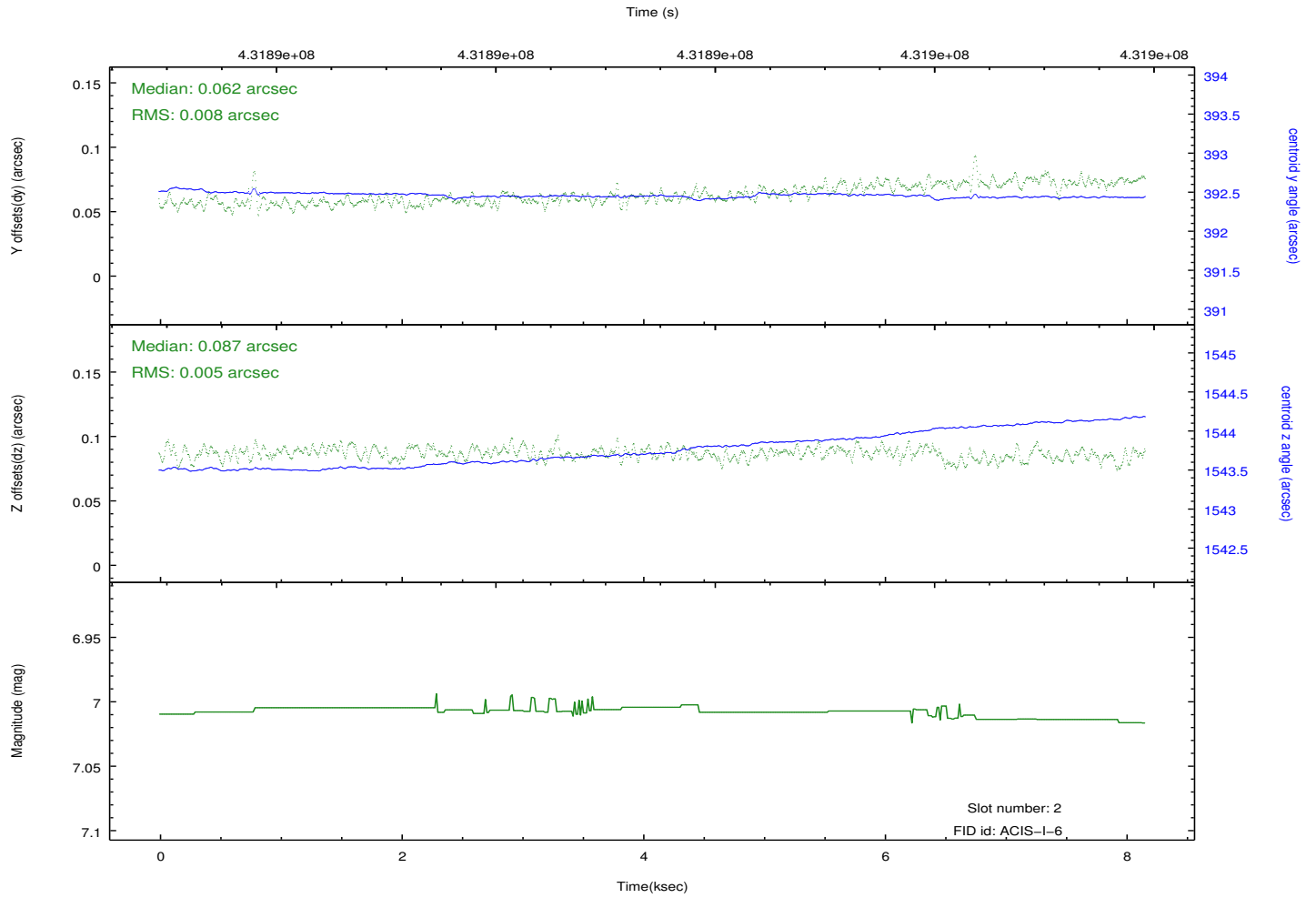
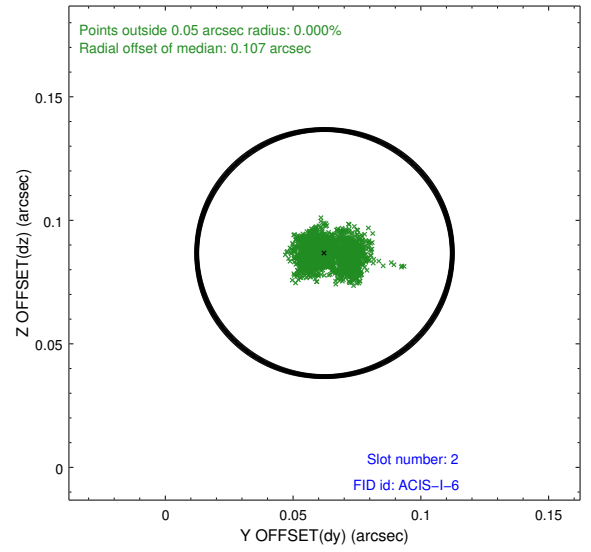
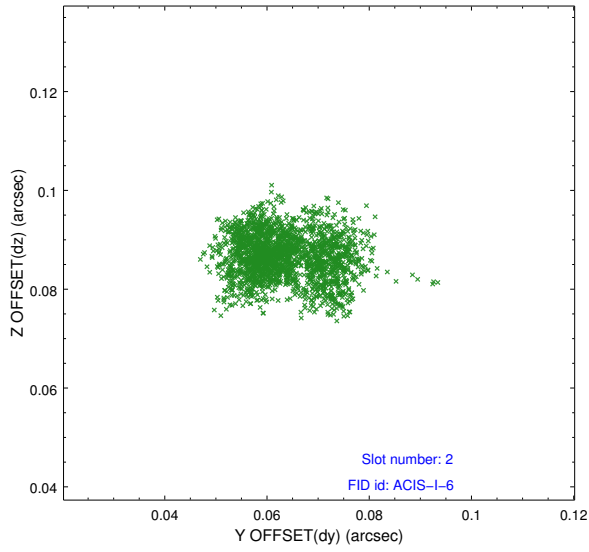
2.5.1 Slot 0



2.5.2 Slot 1



2.5.3 Slot 2



A Summary

A.1 Status

V&V Scientist	Jen Lauer
V&V Date (YYYY-MM-DD)	2012.02.22
V&V Edition	1
V&V Disposition and Status	OK
V&V Charge Time	8.0537081648111

A.2 Comments