

V&V Reference Report

L2 ASCDS Version : 8.4.4

Observation 13725 - L2 Version 1
Chandra X-Ray Center

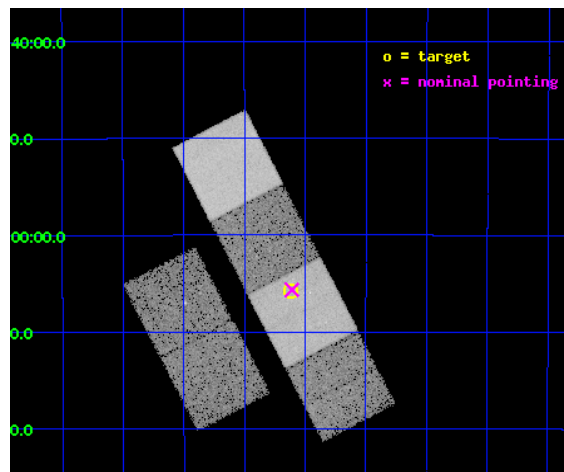
L2 Processing Date : May 3 2012

Contents

1	Front	2
2	OBI	3
2.1	OBI	3
2.1.1	Images	3
2.1.2	Bias	3
2.1.3	Parameters	4
2.1.4	Events	4
2.2	Compared Parameters	5
2.3	Aspect	6
2.4	Star Slots	9
2.4.1	Slot 3	9
2.4.2	Slot 4	10
2.4.3	Slot 5	11
2.4.4	Slot 6	12
2.4.5	Slot 7	13
2.5	FID Slots	14
2.5.1	Slot 0	14
2.5.2	Slot 1	15
2.5.3	Slot 2	16
A	Summary	17
A.1	Status	17
A.2	Comments	17

1 Front

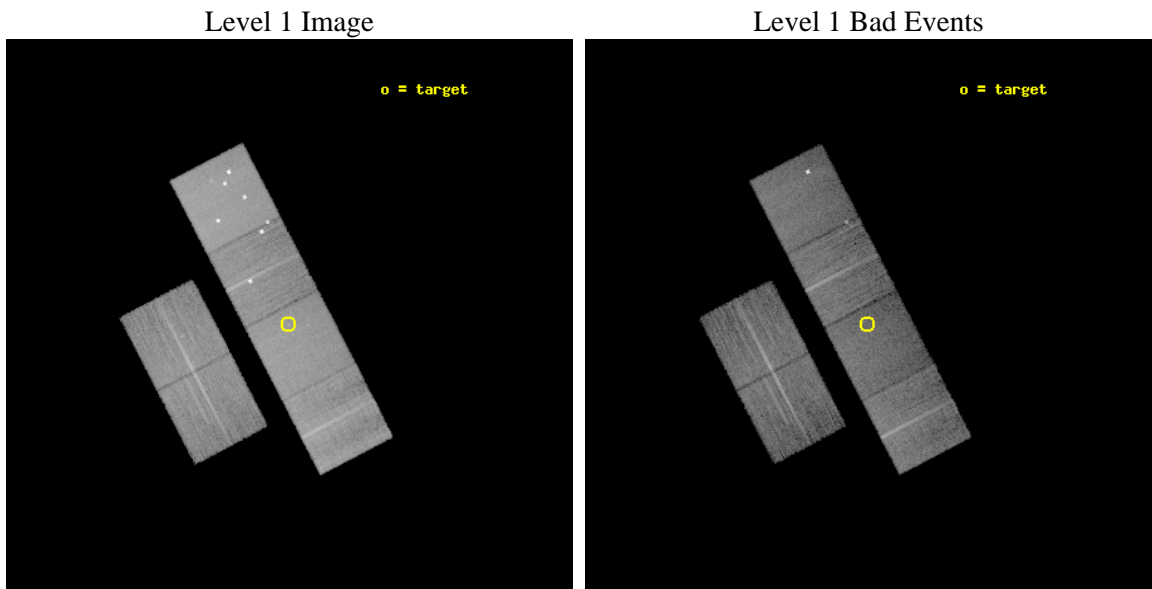
seq_num	401411	Sequence number
obs_id	13725	Observation id
title	Chandra Observations of More New Black Widows and Redbacks in the Galactic Field	Proposal title
observer	Dr. Mallory Roberts	Principal investigator
object	PSR J1628-32	Source name
dtcycle	0	
cycle	P	events from which exps? Prim/Second/Both
ra_targ	247.029167	Observer's specified target RA [deg]
dec_targ	-32.096944	Observer's specified target Dec [deg]
ra_nom	247.02738391339	Nominal RA [deg]
dec_nom	-32.094302254223	Nominal Dec [deg]
roll_nom	62.602806166266	Nominal Roll [deg]
revision	1	Processing version of data
ontime	20284.166915298	Sum of GTIs [s]
livetime	20027.316580157	Livetime [s]
ontime2	20277.725884616	Sum of GTIs [s]
ontime3	20284.043795288	Sum of GTIs [s]
ontime5	20284.125875294	Sum of GTIs [s]
ontime6	20284.084835291	Sum of GTIs [s]
ontime7	20284.166915298	Sum of GTIs [s]
ontime8	20284.002755284	Sum of GTIs [s]
l2events	210749	Number of level 2 events



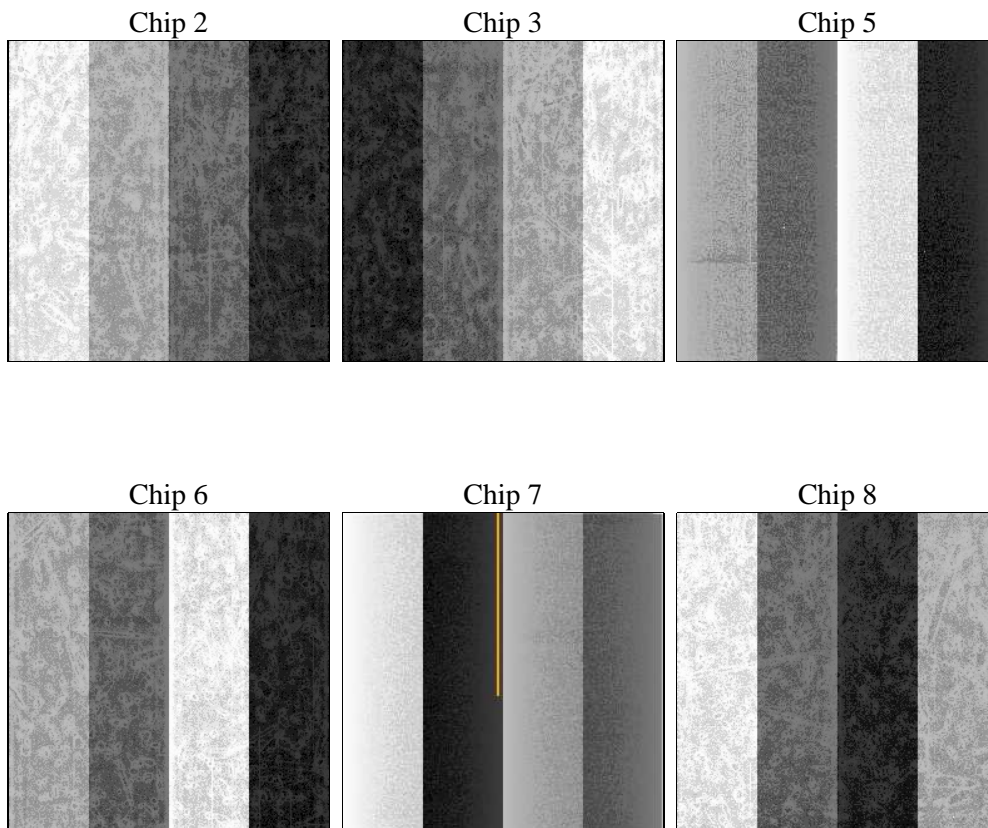
2 OBI

2.1 OBI

2.1.1 Images



2.1.2 Bias



2.1.3 Parameters

obi_num	0	Obi number	sched_exp_time	20320.870000	[s] Scheduled observation exposure time
ascdsver	8.4.4	Processing system revision	ontime	20284.166915298	Sum of GTIs [s]
caldsver	4.4.9	 	ontime2	20277.725884616	Sum of GTIs [s]
date	2012-05-03T17:18:21	Date and time of file creation	ontime3	20284.043795288	Sum of GTIs [s]
revision	1	Processing version of data	ontime5	20284.125875294	Sum of GTIs [s]
			ontime6	20284.084835291	Sum of GTIs [s]
			ontime7	20284.166915298	Sum of GTIs [s]
			ontime8	20284.002755284	Sum of GTIs [s]
			l1events	916049	Number of level 1 events

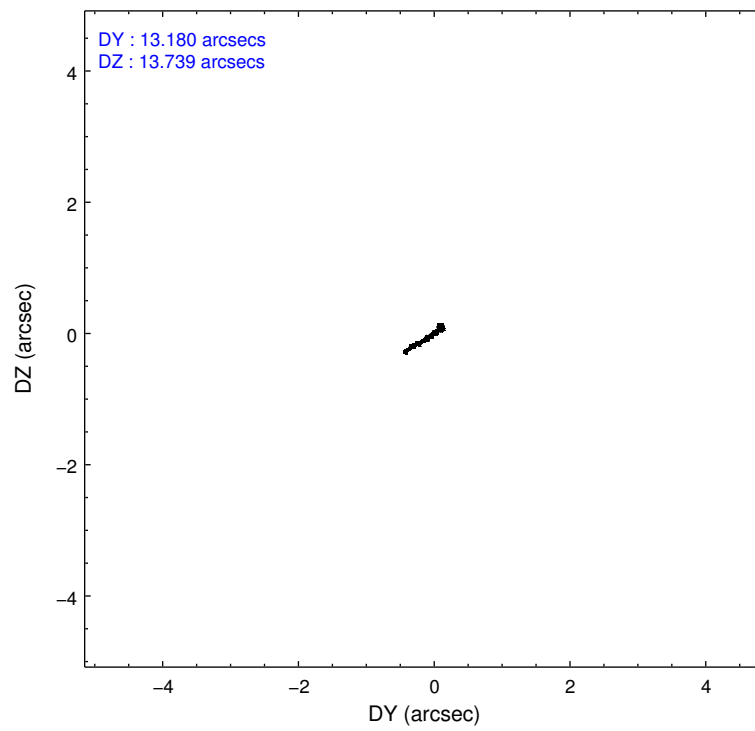
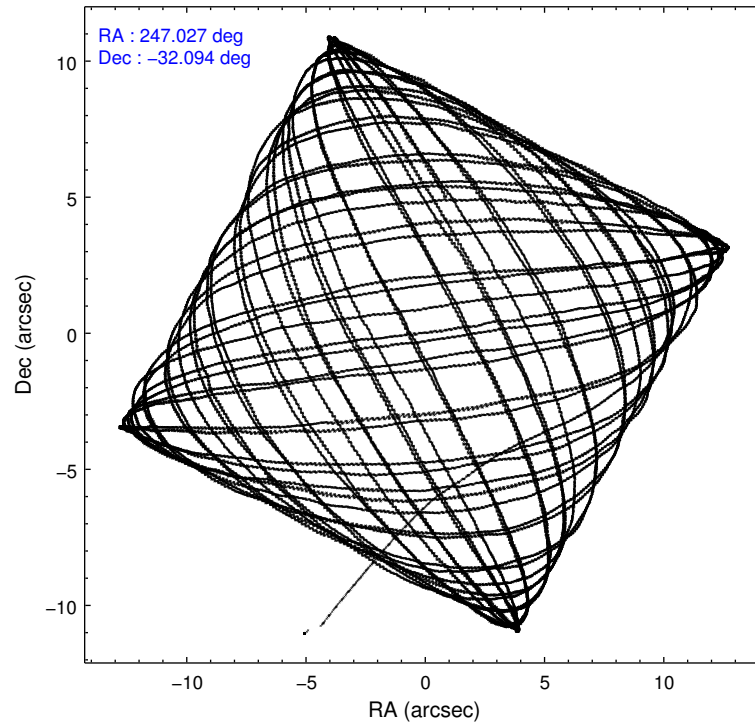
2.1.4 Events

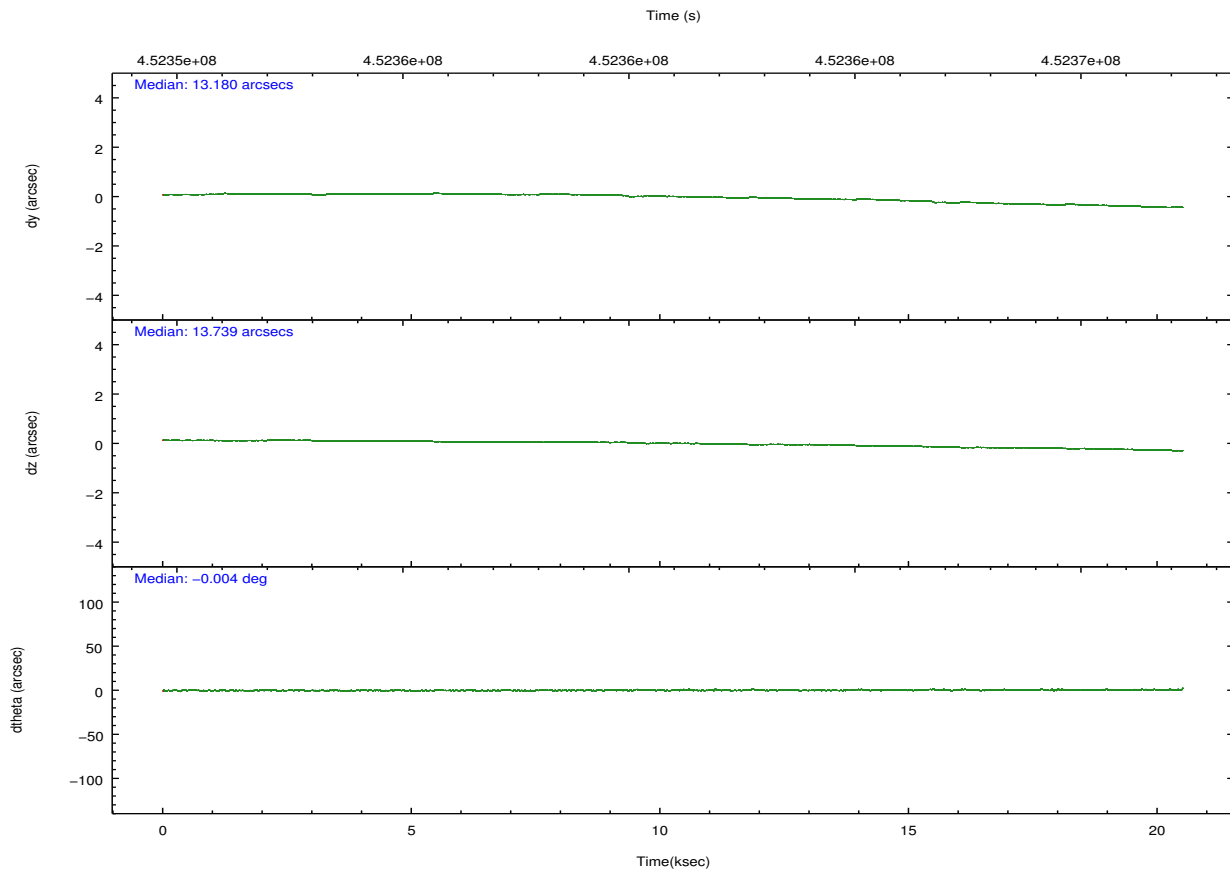
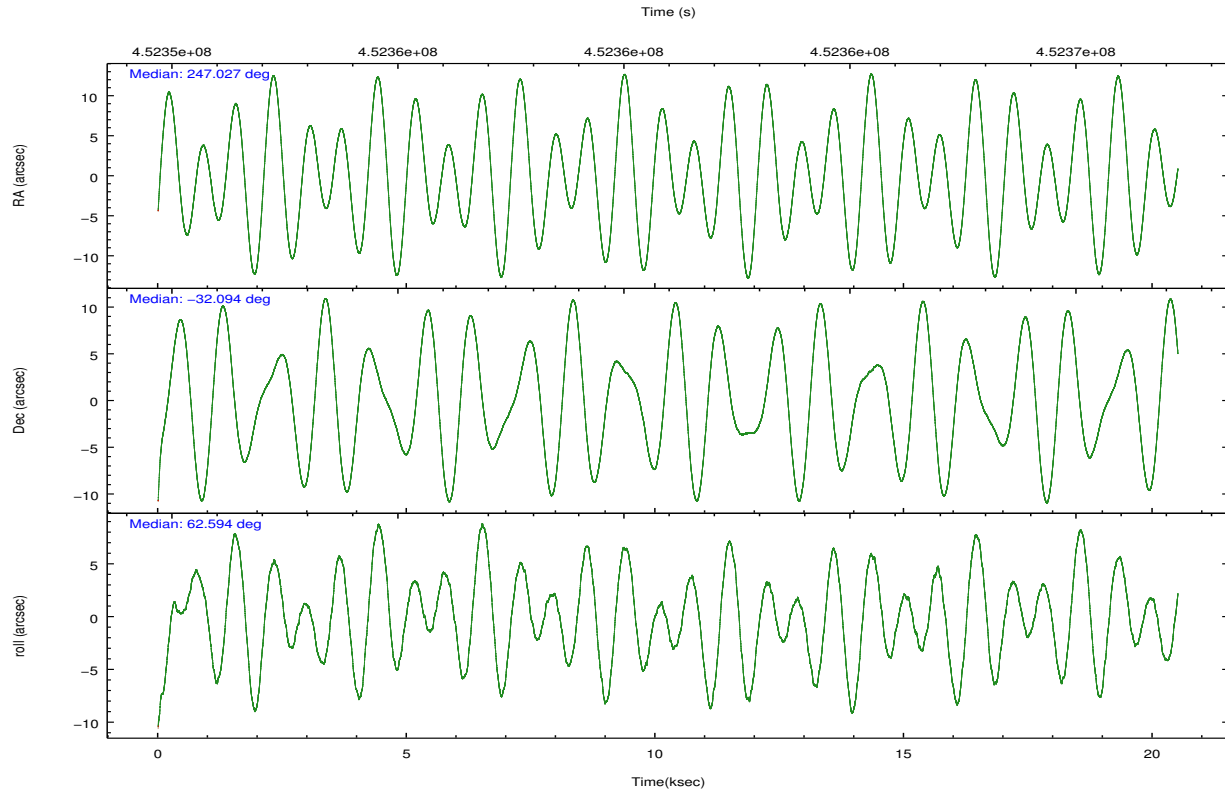
	ccd 2	ccd 3	ccd 5	ccd 6	ccd 7	ccd 8		ccd 2	ccd 3	ccd 5	ccd 6	ccd 7	ccd 8
level 1 events	122593	114225	217922	137921	161880	161508	grade 0 events	5349	4745	23697	17559	6562	12140
rejected events	108417	101194	104760	110730	89779	119006		4%	4%	10%	12%	4%	7%
rejected %	88%	88%	48%	80%	55%	73%	grade 1 events	91	69	832	91	196	118
								0%	0%	0%	0%	0%	0%
							grade 2 events	3278	2841	31698	3239	14845	10024
								2%	2%	14%	2%	9%	6%
							grade 3 events	1427	1407	3293	1513	6110	4655
								1%	1%	1%	1%	3%	2%
							grade 4 events	1424	1410	3206	1583	6004	4312
								1%	1%	1%	1%	3%	2%
							grade 5 events	5405	5860	14789	6281	16360	8855
								4%	5%	6%	4%	10%	5%
							grade 6 events	2700	2630	51285	3307	38587	11377
								2%	2%	23%	2%	23%	7%
							grade 7 events	102919	95263	89122	104348	73216	110027
								83%	83%	40%	75%	45%	68%

2.2 Compared Parameters

Parameter	Planned	Actual	Parameter	Planned	Actual
Instrument	ACIS	ACIS	Obspar format version number	7	7
Detector	ACIS-235678	ACIS-235678	Obspar file type	PREDICTED	ACTUAL
Grating	NONE	NONE	Obspar update status	NONE	UPDATED
Data mode	VFAINT	VFAINT	CCD I0 on	N	N
Observation mode	POINTING	POINTING	CCD I1 on	N	N
[deg] Pointing RA	247.029280	247.0273839133891	CCD I2 on	O4	Y
[deg] Pointing Dec	-32.121612	-32.09430225422268	CCD I3 on	O5	Y
[deg] Pointing Roll	62.447187	62.60280616626608	CCD S0 on	N	N
[mm] SIM focus pos	-0.684267	-0.6828225247311905	CCD S1 on	O2	Y
[mm] SIM defocus	0	0.001444936568705701	CCD S2 on	O1	Y
[mm] SIM translation stage pos	-190.132523	-190.1400660498719	CCD S3 on	Y	Y
[mm] SIM translation stage offset	0	0.00754346686406393	CCD S4 on	O3	Y
[s] Observation start time (MET)	452350920.184000	452349689.39406	CCD S5 on	N	N
Observation start date	2012-05-02T13:00:54	2012-05-02T12:41:29	Number of optional ACIS chips dropped	0	0
[s] Observation end time (MET)	452371241.184000	452371467.05771	On-chip summing requested	N	N
Observation end date	2012-05-02T18:39:35	2012-05-02T18:44:27	Subarray requested	NONE	NONE
Read mode	TIMED	TIMED	Alternating exposures requested	N	N
			[s] Primary exposure time	0.000000	3.2

2.3 Aspect



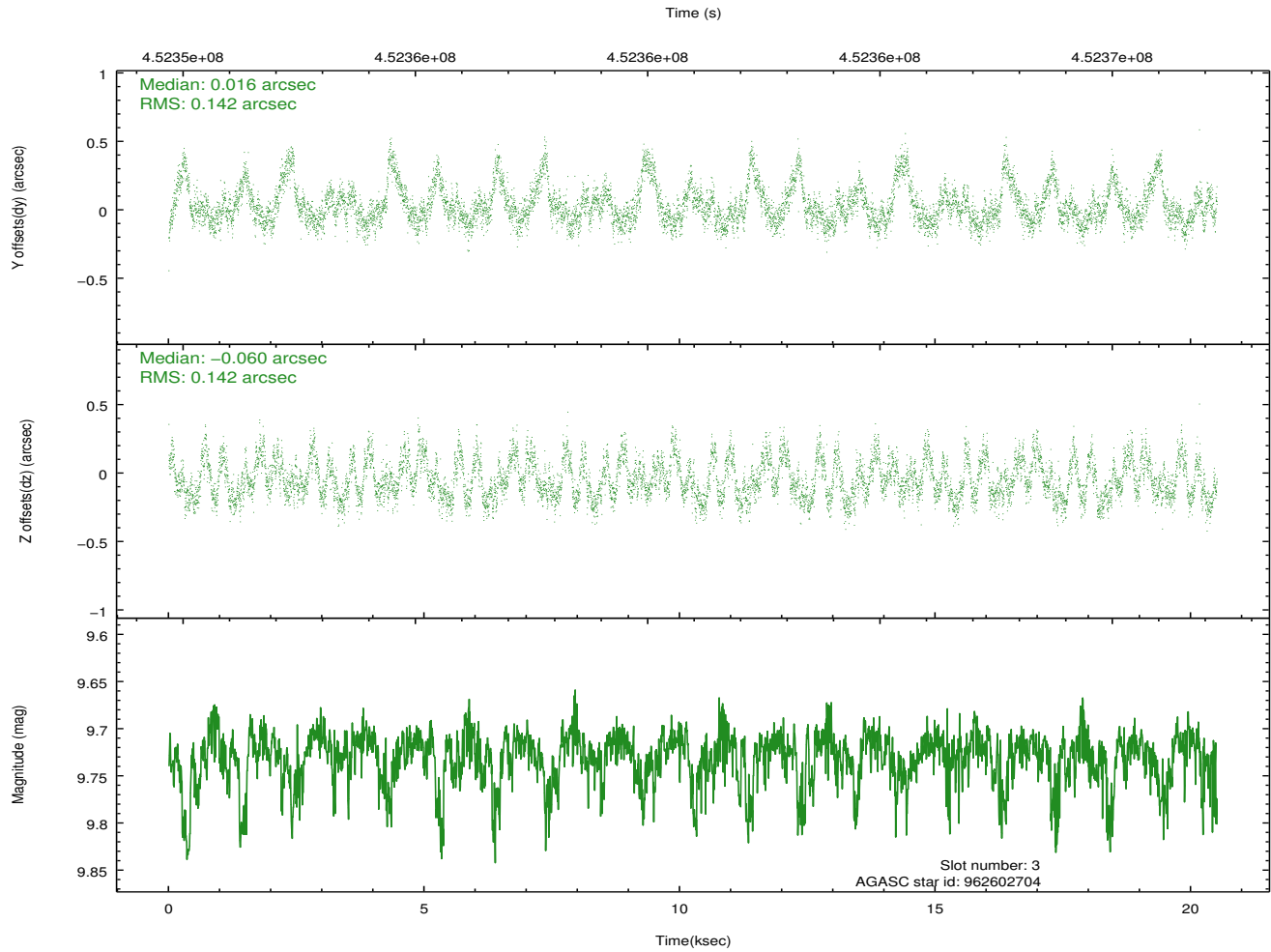
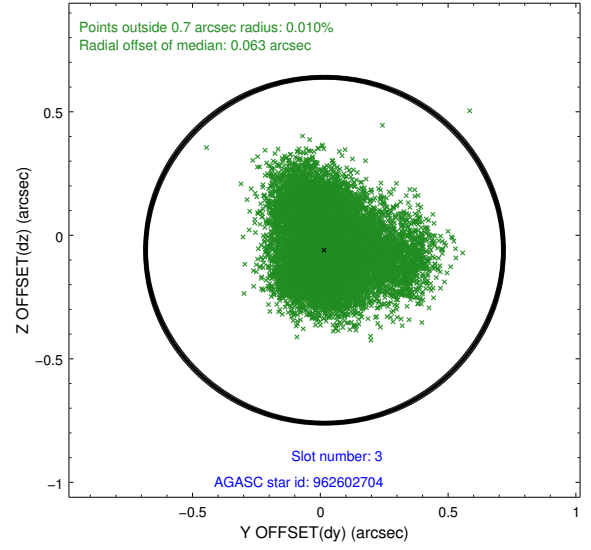
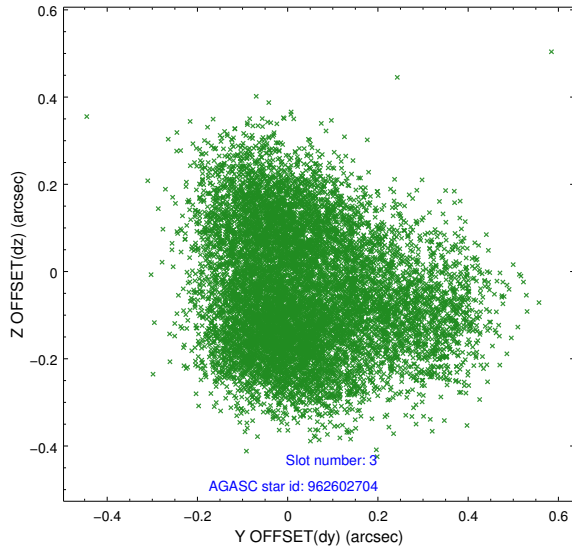


Slot Statistics

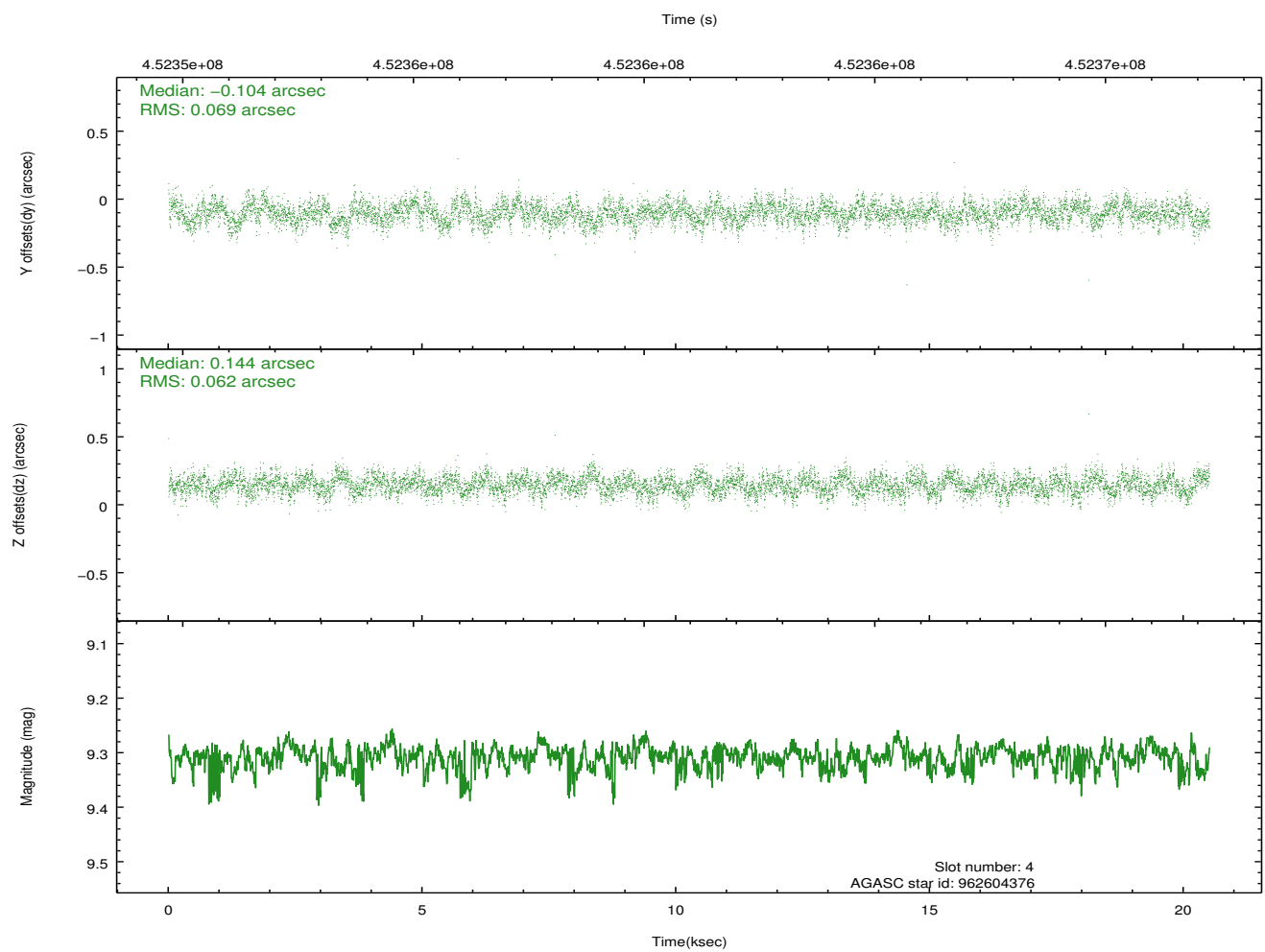
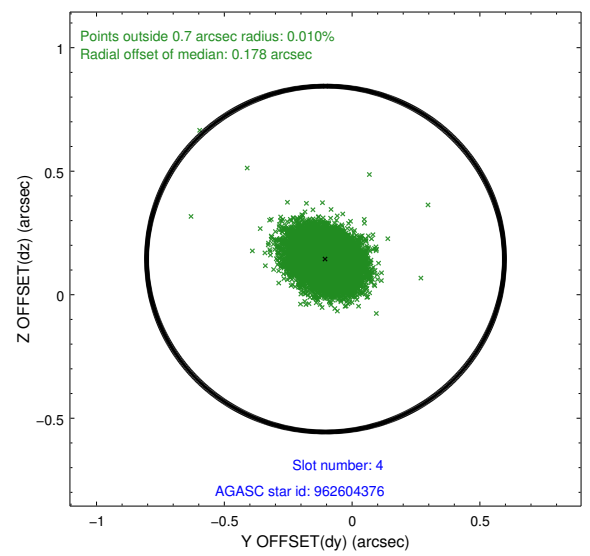
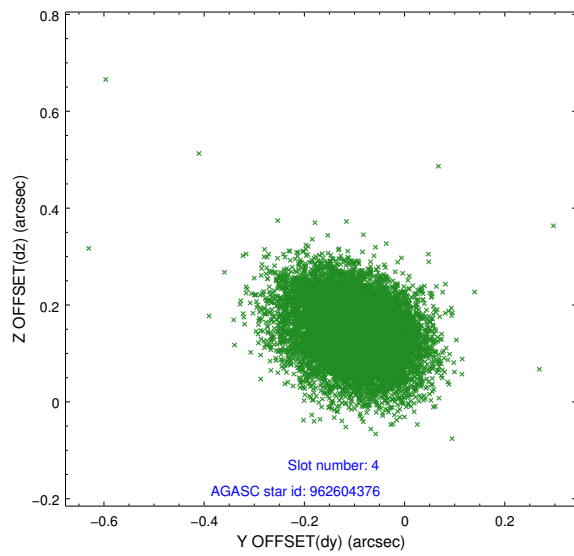
slot	status	id	mag	n_pts	med_dy	med_dz	dr1	dr2	ra	dec	mean_y	mean_z
0	FID	ACIS-S-2	7.02	5003	-0.056	-0.063	0.011	0.017	0.000000	0.000000	-766.10	-1735.12
1	FID	ACIS-S-4	7.11	5001	0.224	0.044	0.010	0.021	0.000000	0.000000	2147.38	173.27
2	FID	ACIS-S-5	7.15	5002	-0.197	0.028	0.011	0.017	0.000000	0.000000	-1818.85	167.15
3	GUIDE	962602704	9.73	9988	0.016	-0.060	0.214	0.347	246.899931	-31.855404	666.61	793.79
4	GUIDE	962604376	9.31	9987	-0.104	0.144	0.098	0.159	247.418007	-31.740865	1764.07	-421.75
5	GUIDE	962733024	9.40	10000	-0.018	0.069	0.121	0.203	247.860275	-31.817202	2139.45	-1751.19
6	GUIDE	963118872	7.63	10004	0.048	-0.098	0.096	0.145	246.402328	-32.076732	-746.79	1767.23
7	GUIDE	962600088	9.27	9953	0.036	-0.068	0.109	0.174	246.706266	-31.230982	2381.29	2365.11

2.4 Star Slots

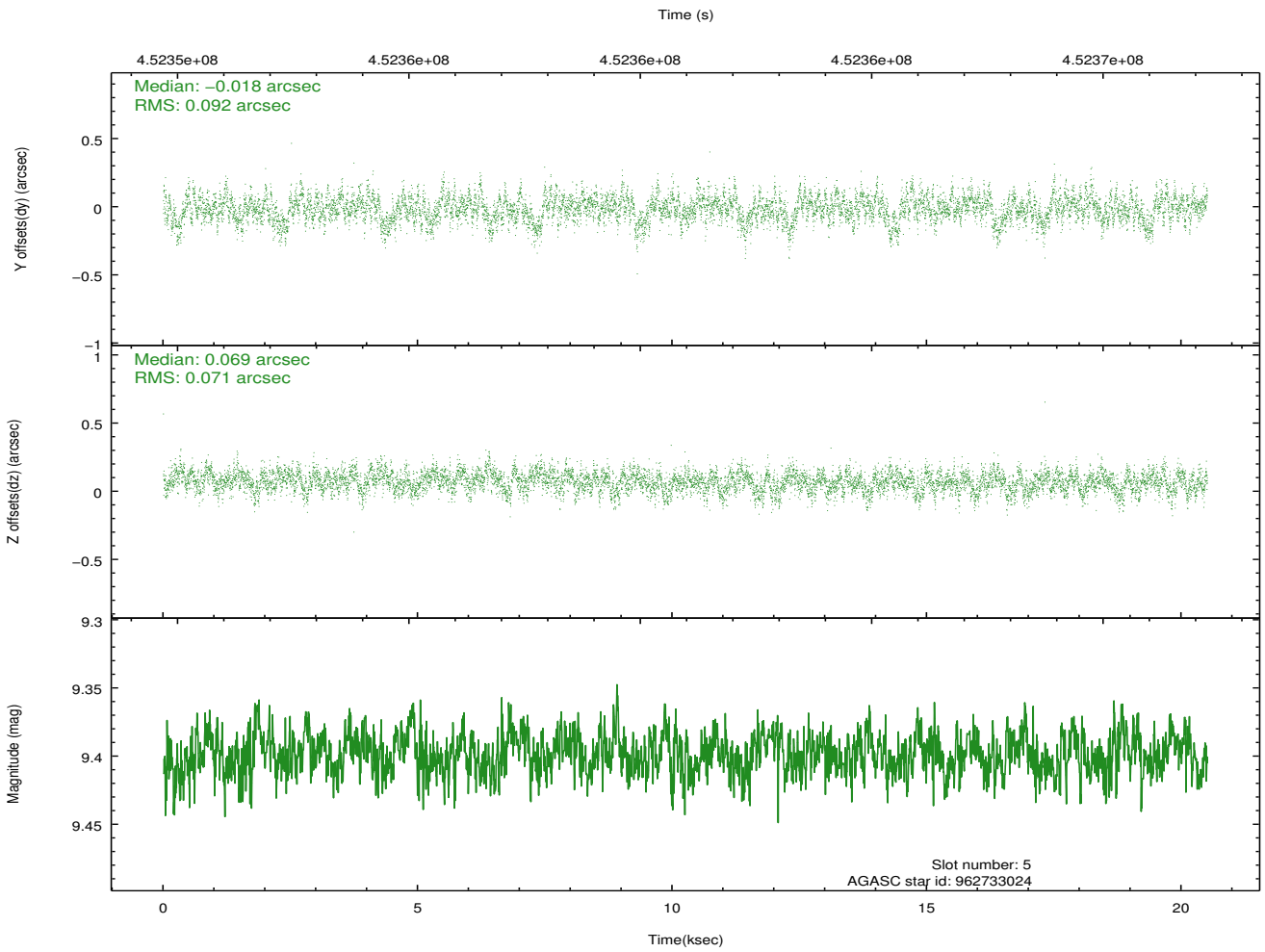
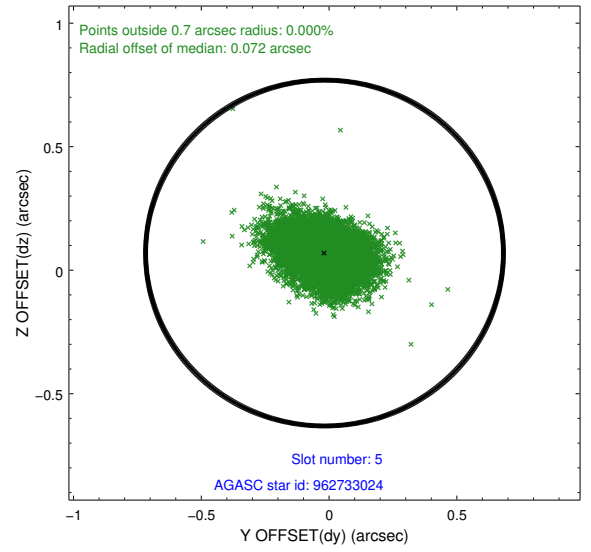
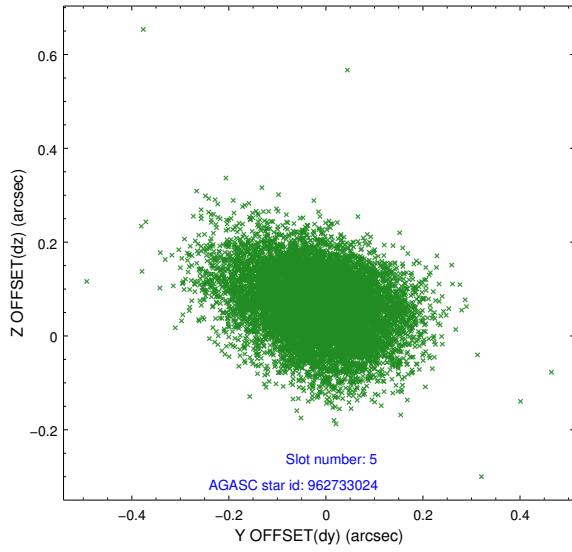
2.4.1 Slot 3



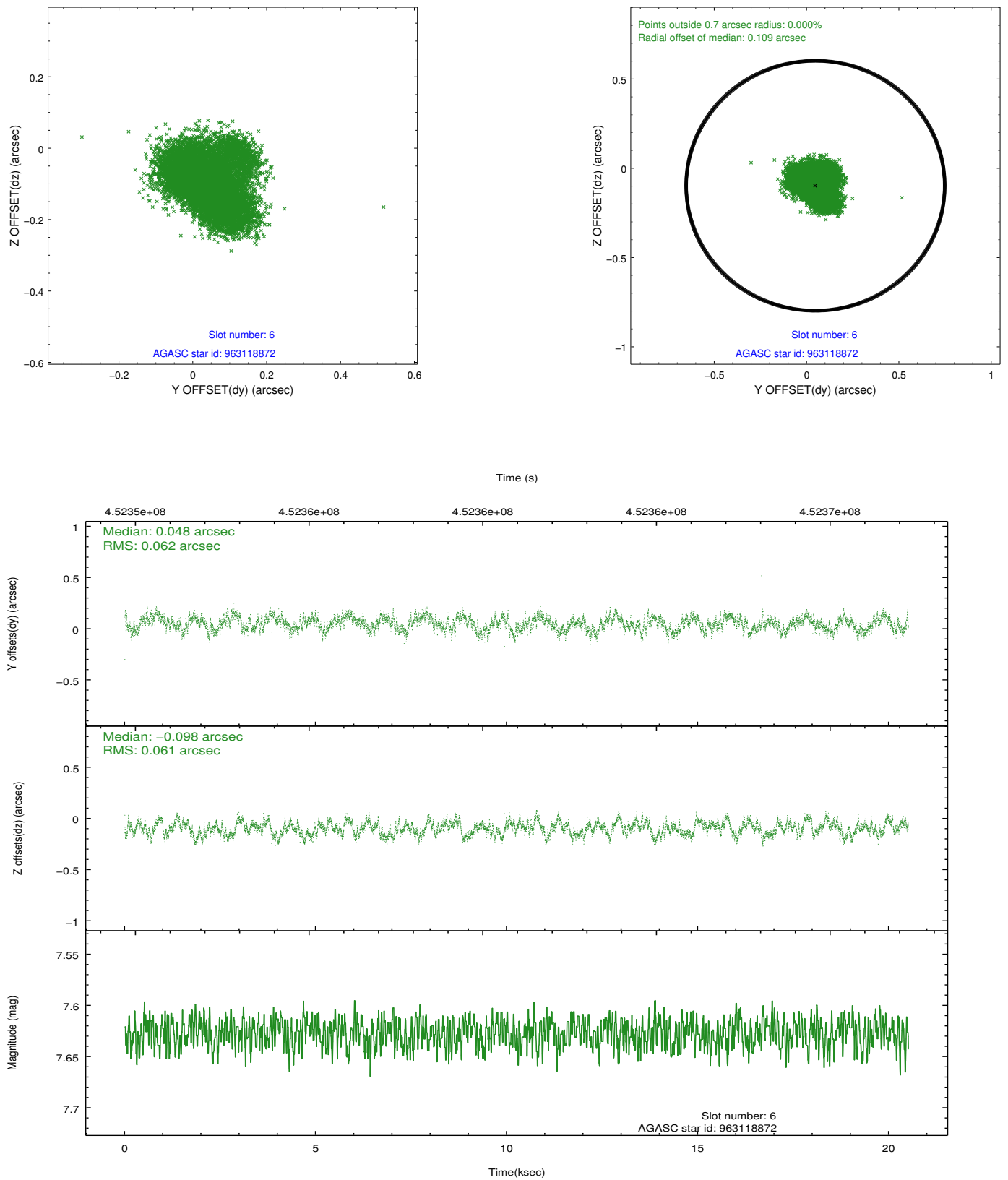
2.4.2 Slot 4



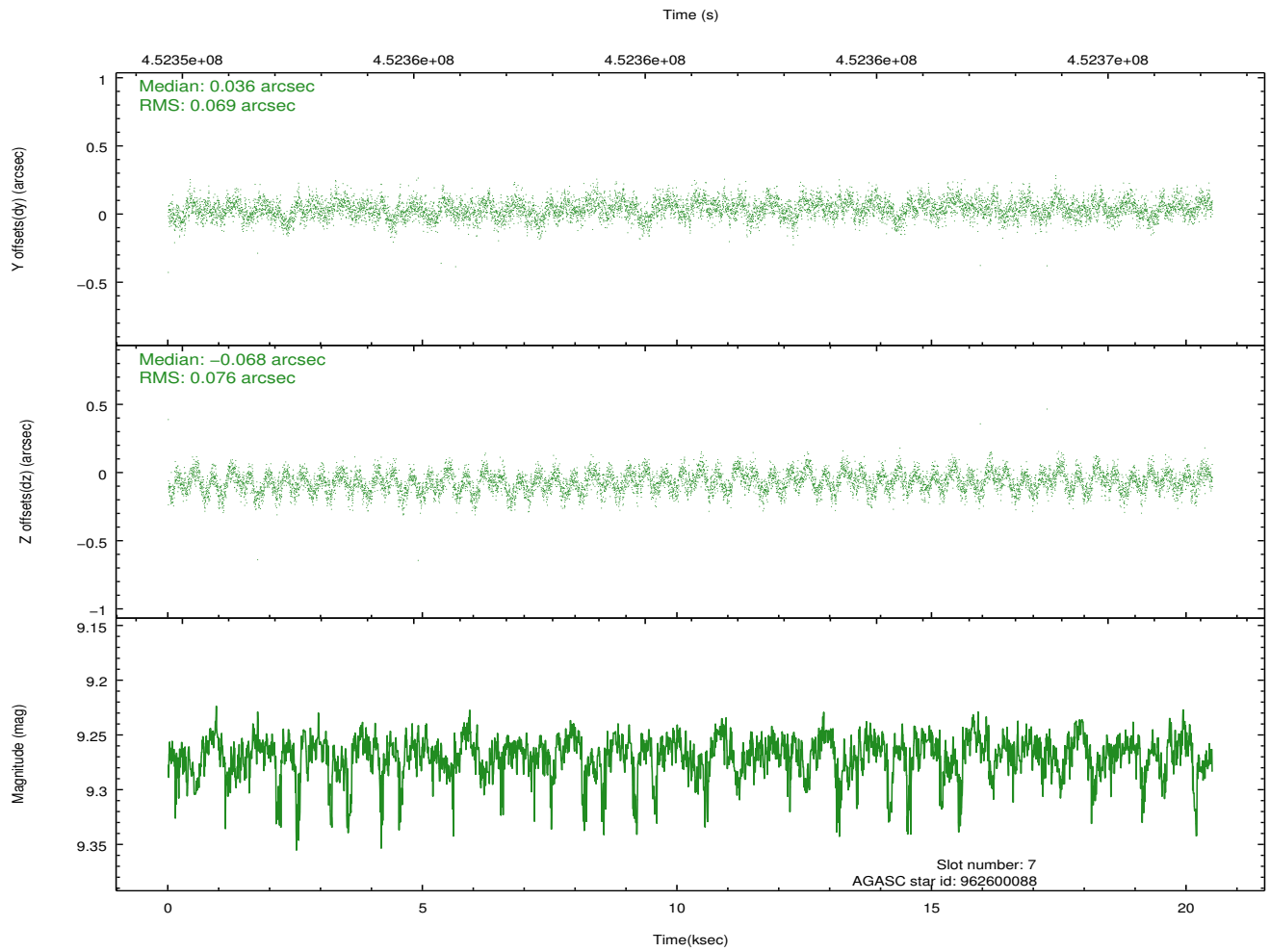
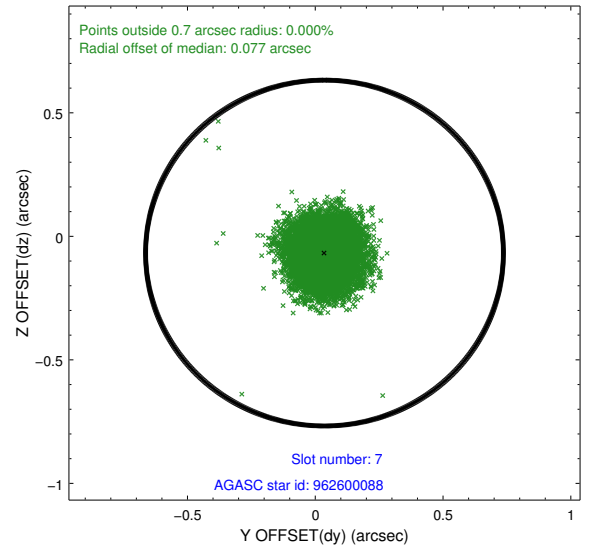
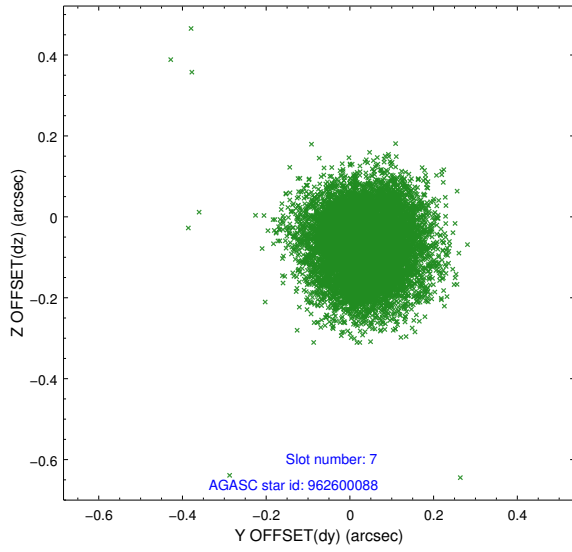
2.4.3 Slot 5



2.4.4 Slot 6

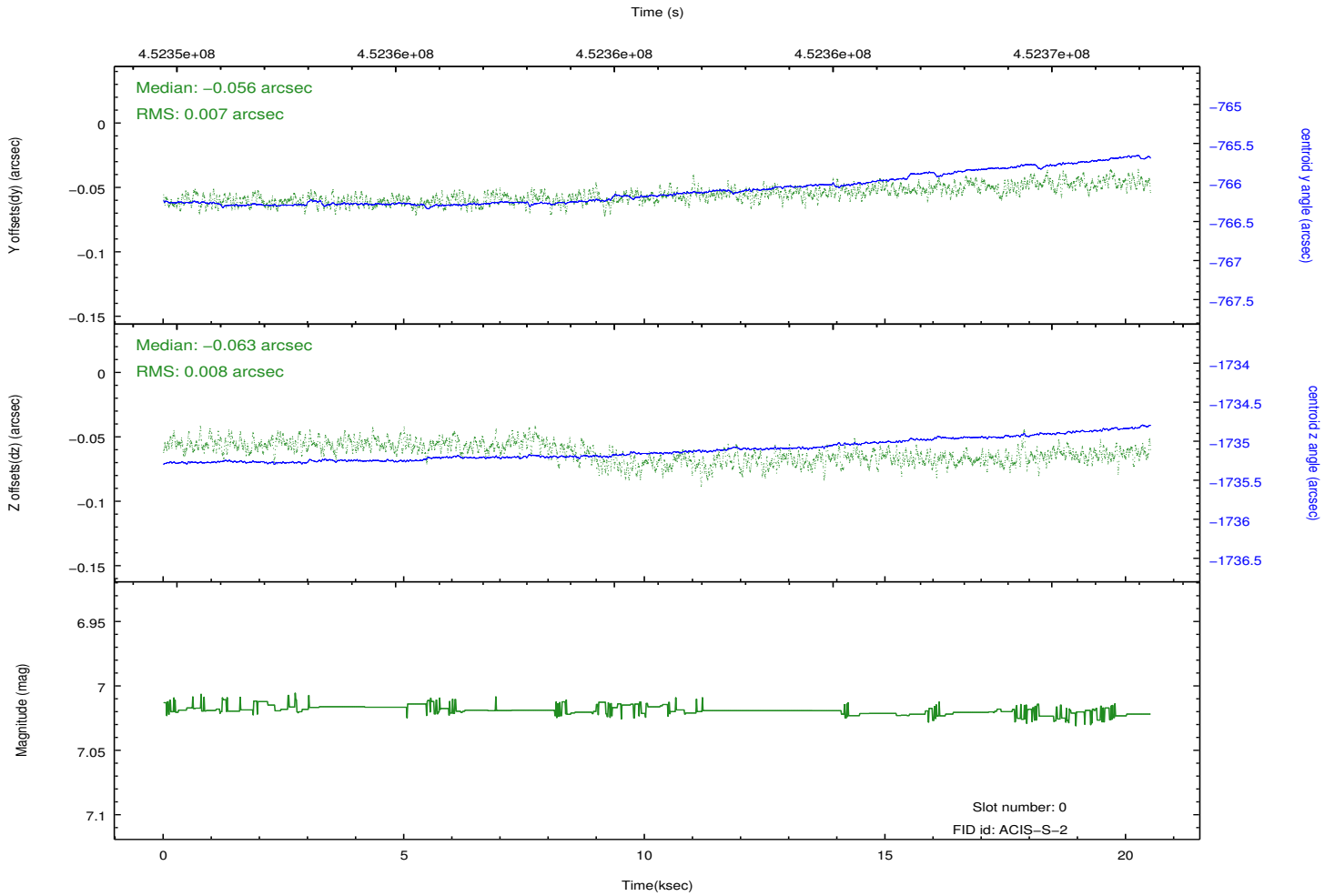
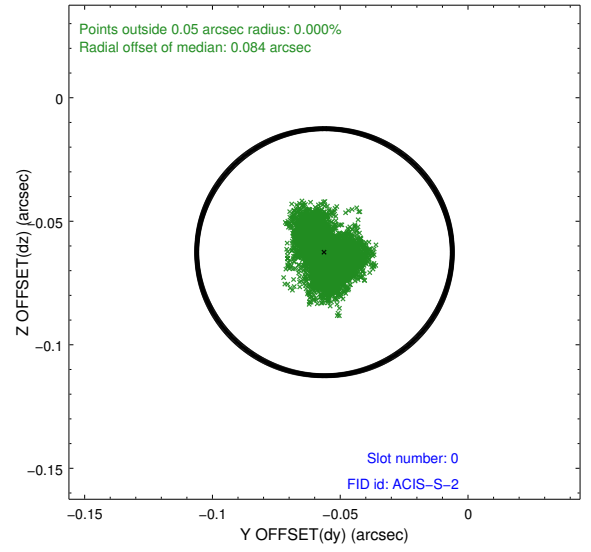
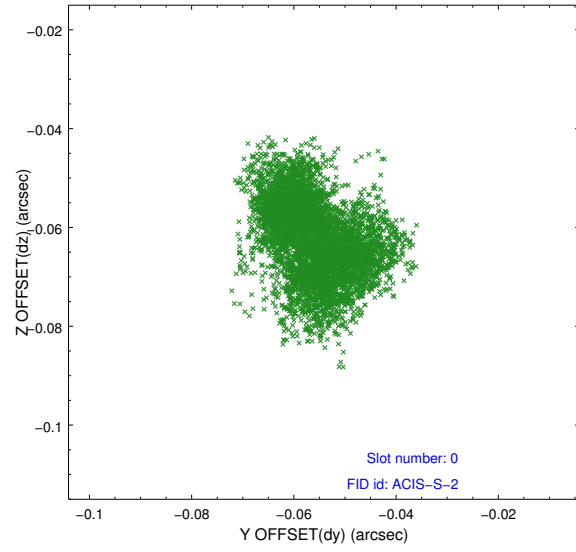


2.4.5 Slot 7

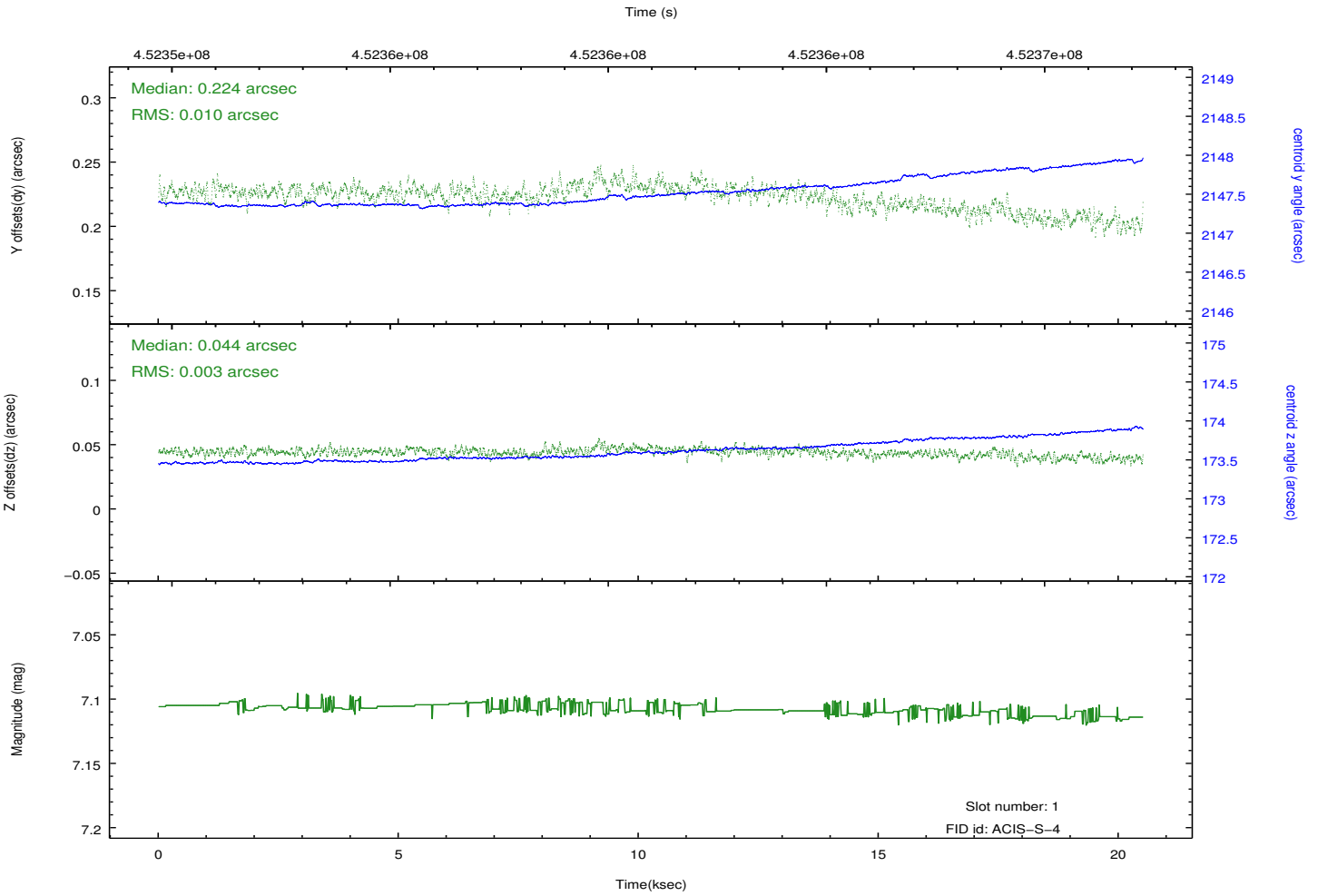
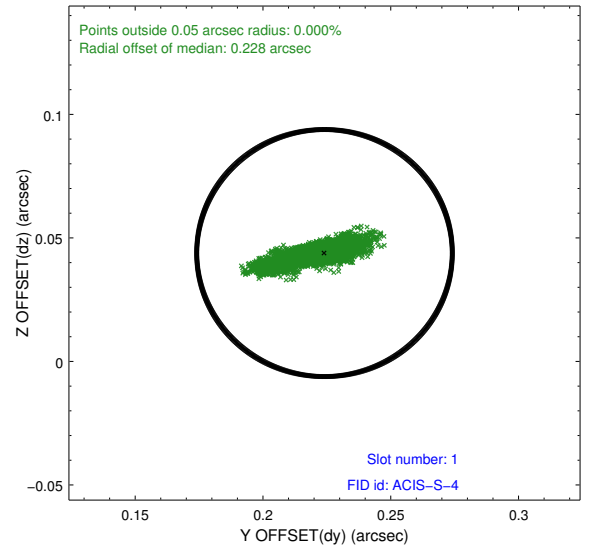
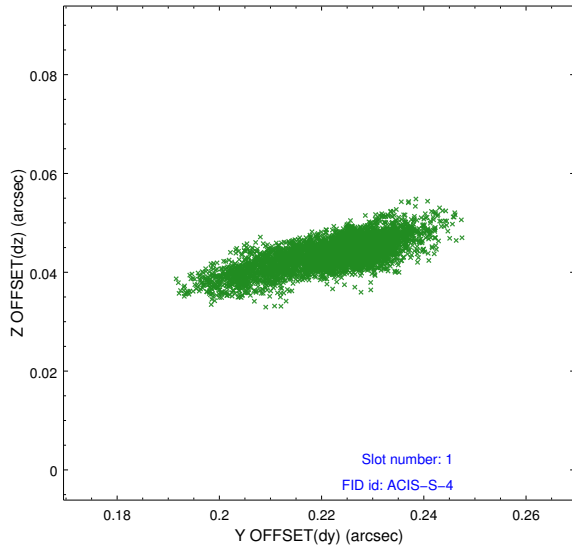


2.5 FID Slots

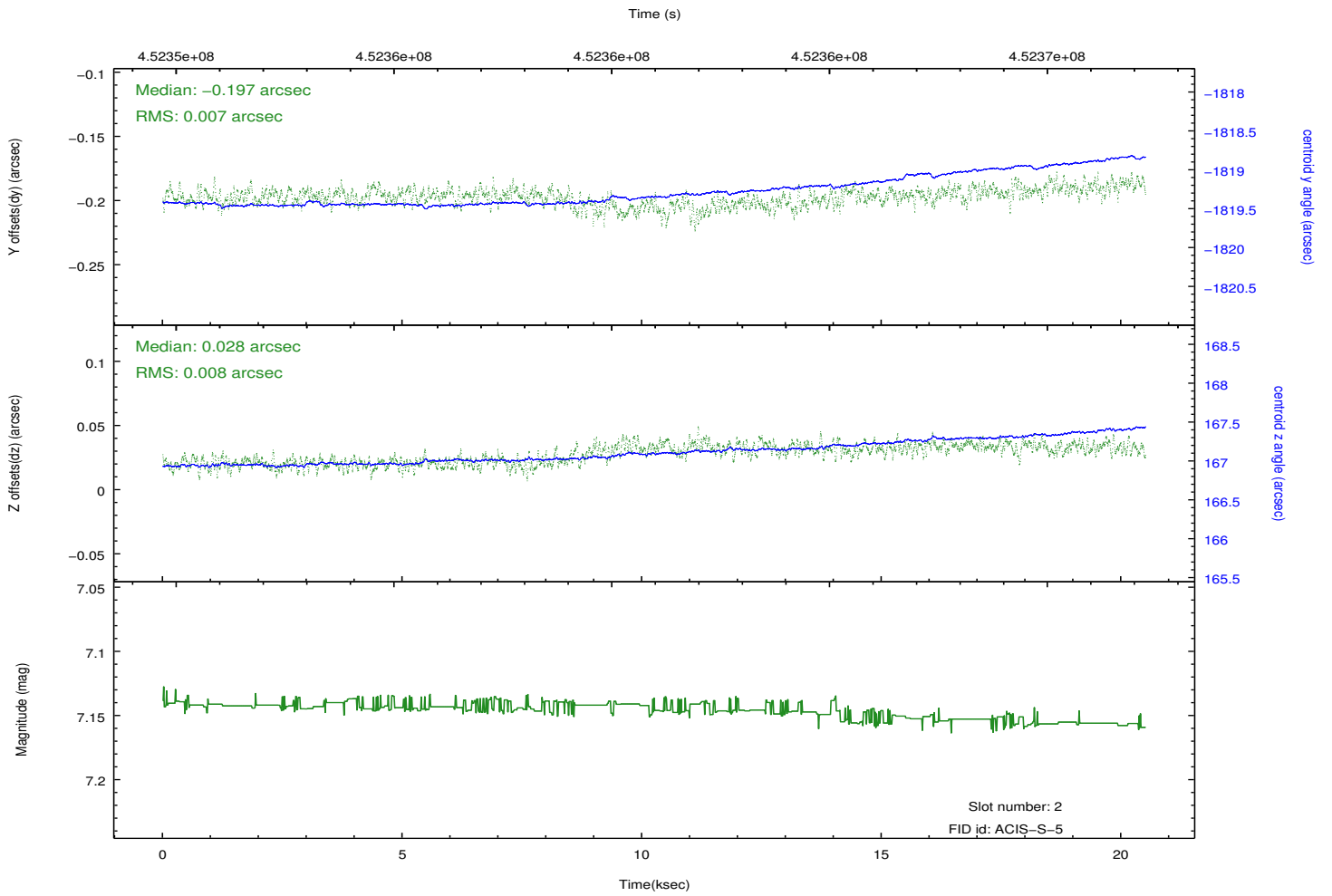
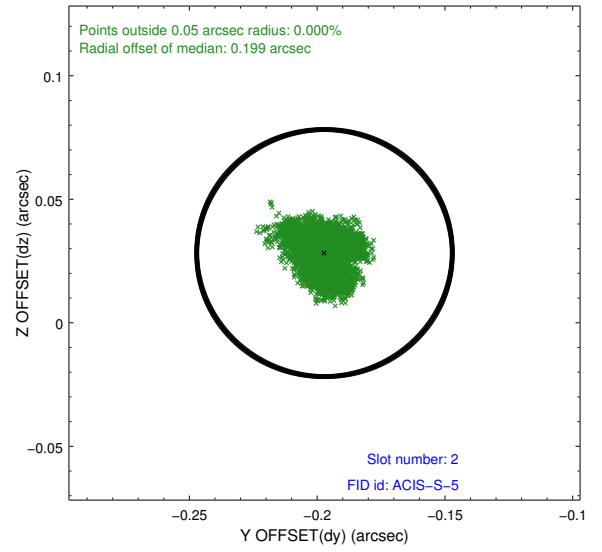
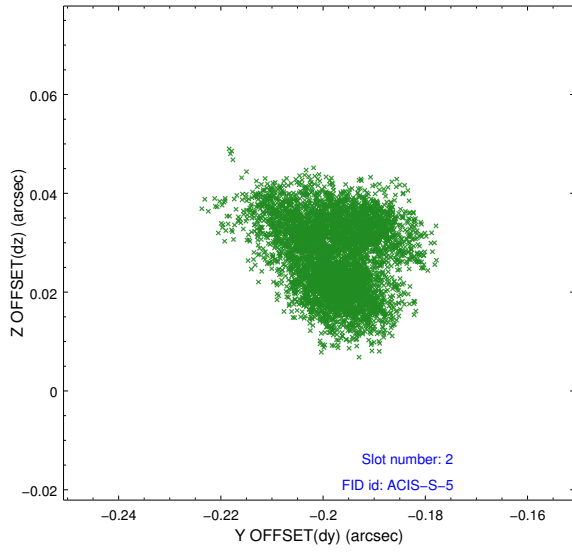
2.5.1 Slot 0



2.5.2 Slot 1



2.5.3 Slot 2



A Summary

A.1 Status

V&V Scientist	Jen Lauer
V&V Date (YYYY-MM-DD)	2012.05.03
V&V Edition	1
V&V Disposition and Status	OK
V&V Charge Time	20.284166915298

A.2 Comments