

V&V Reference Report

L2 ASCDS Version : 8.2.1

Observation 1385 - L2 Version 6
Chandra X-Ray Center

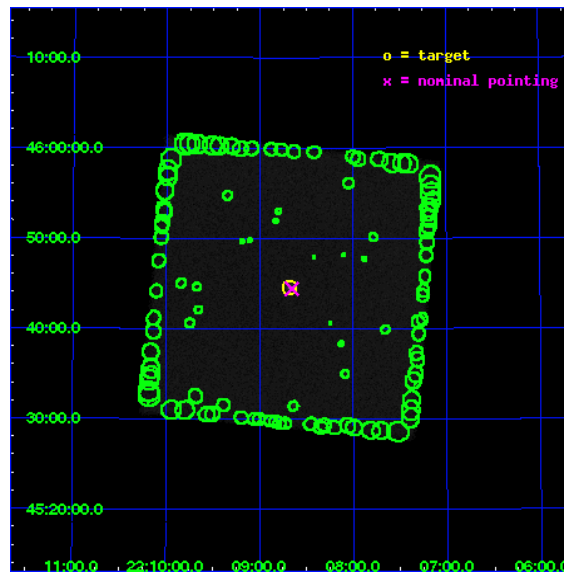
L2 Processing Date : Jan 19 2010

Contents

1	Front	2
2	OBI	3
2.1	OBI	3
2.1.1	Images	3
2.1.2	Parameters	4
2.1.3	Events	4
2.2	Compared Parameters	5
2.3	Aspect	6
2.4	Star Slots	9
2.4.1	Slot 3	9
2.4.2	Slot 4	10
2.4.3	Slot 5	11
2.4.4	Slot 6	12
2.4.5	Slot 7	13
2.5	FID Slots	14
2.5.1	Slot 0	14
2.5.2	Slot 1	15
2.5.3	Slot 2	16
3	Point Sources	17
A	Summary	18
A.1	Status	18
A.2	Comments	18

1 Front

seq_num	270335	Sequence number
obs_id	1385	Observation id
title	override obspar	Proposal title
observer	Dr. CXC Calibration	Principal investigator
object	ArLac	Source name
ra_targ	332.1701	Observer's specified target RA
dec_targ	45.7423	Observer's specified target Dec
ra_nom	332.16395050241	Nominal RA
dec_nom	45.740251270566	Nominal Dec
roll_nom	230.44377453866	Nominal Roll
revision	6	Processing version of data
ontime	18761.600675866	[s]
livetime	18619.800286158	Ontime multiplied by DTCOR
l2events	792816	Number of level 2 events

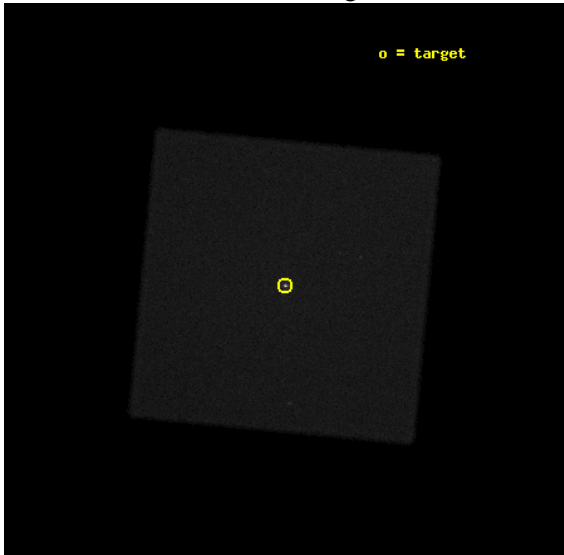


2 OBI

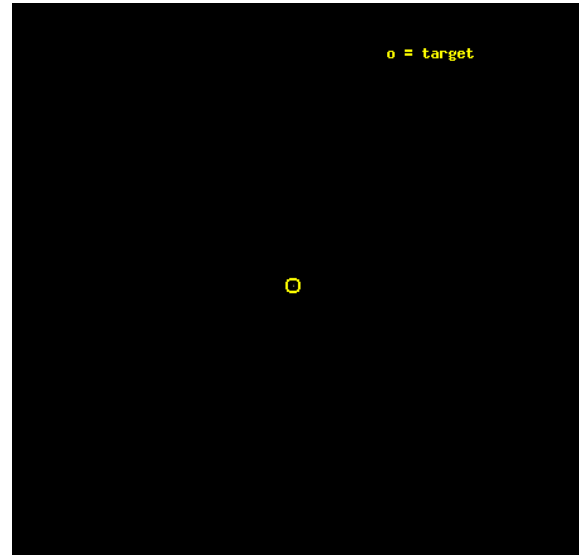
2.1 OBI

2.1.1 Images

Level 1 Image



Level 1 Bad Events



2.1.2 Parameters

obi_num	0	Obi number	sched_exp_time	10000.000000	Scheduled observation exposure time
ascdsver	8.2.1	Processing system revision	ontime	18761.600675866	[s]
caldbver	4.1.5	 	ll events	1147443	Number of level 1 events
date	2010-01-19T21:45:08	Date and time of file creation			
revision	6	Processing version of data			

2.1.3 Events

Level 1 Events

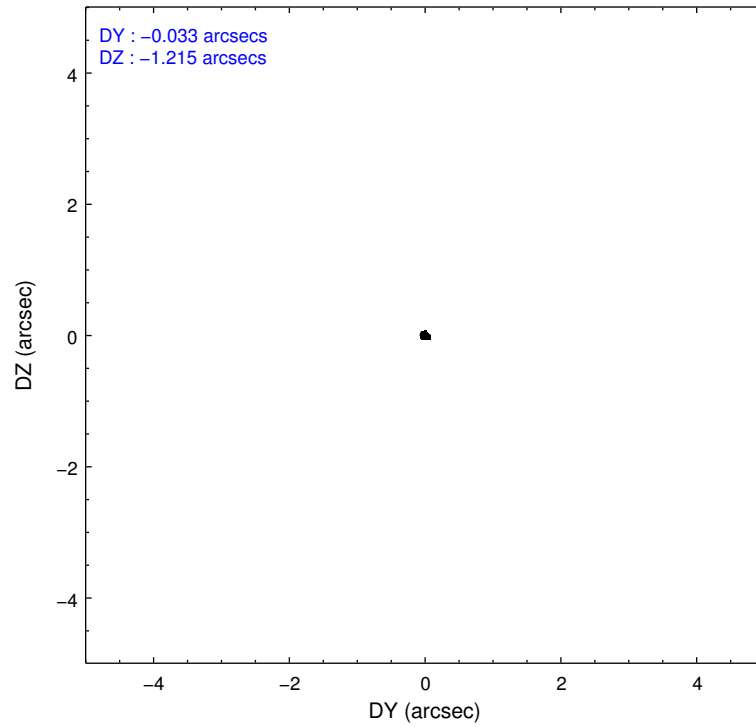
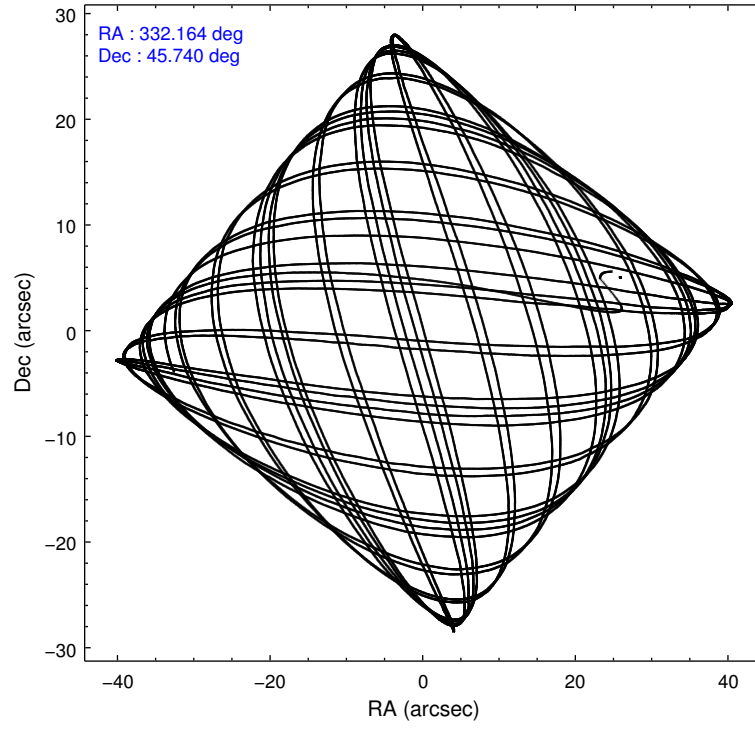
	segment 0
level 1 events	1147443
rejected events	3212
rejected %	0%

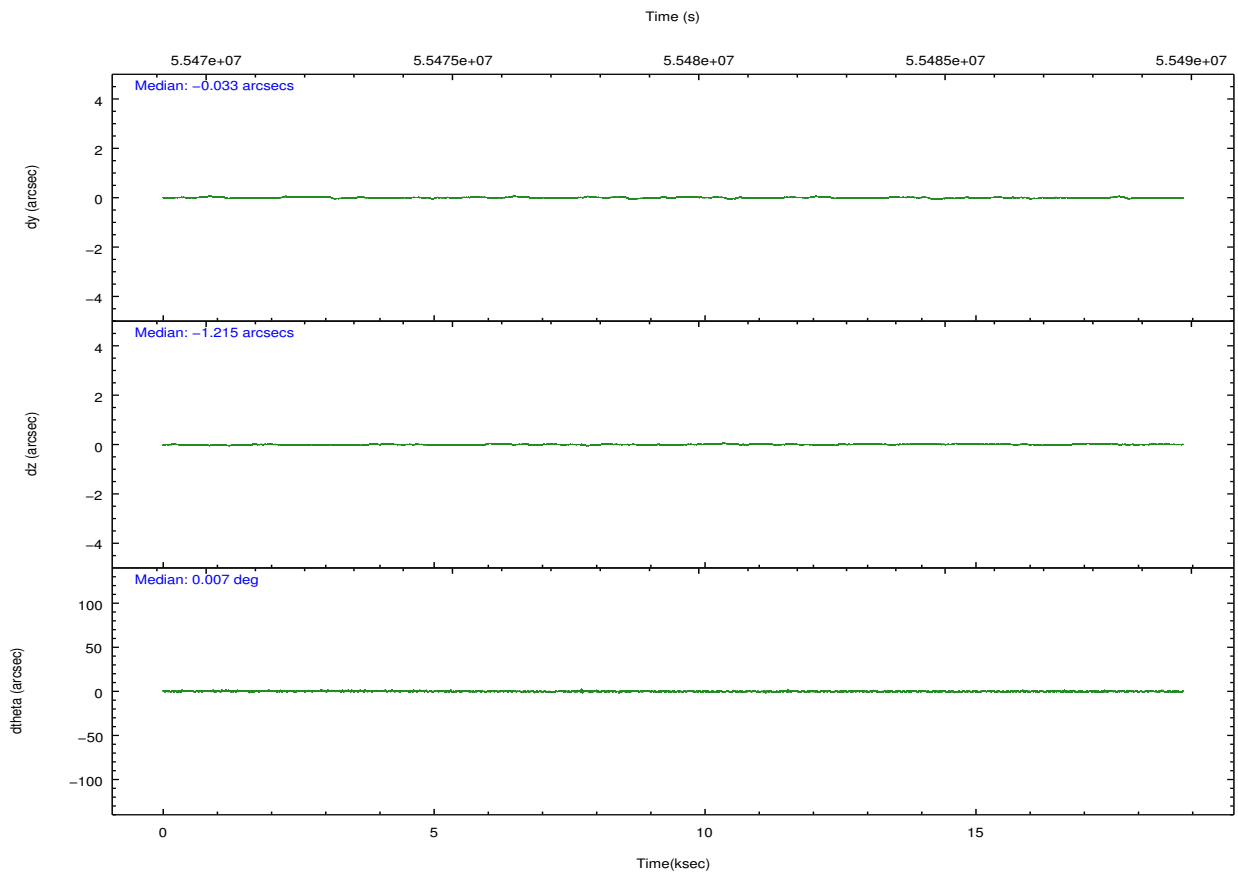
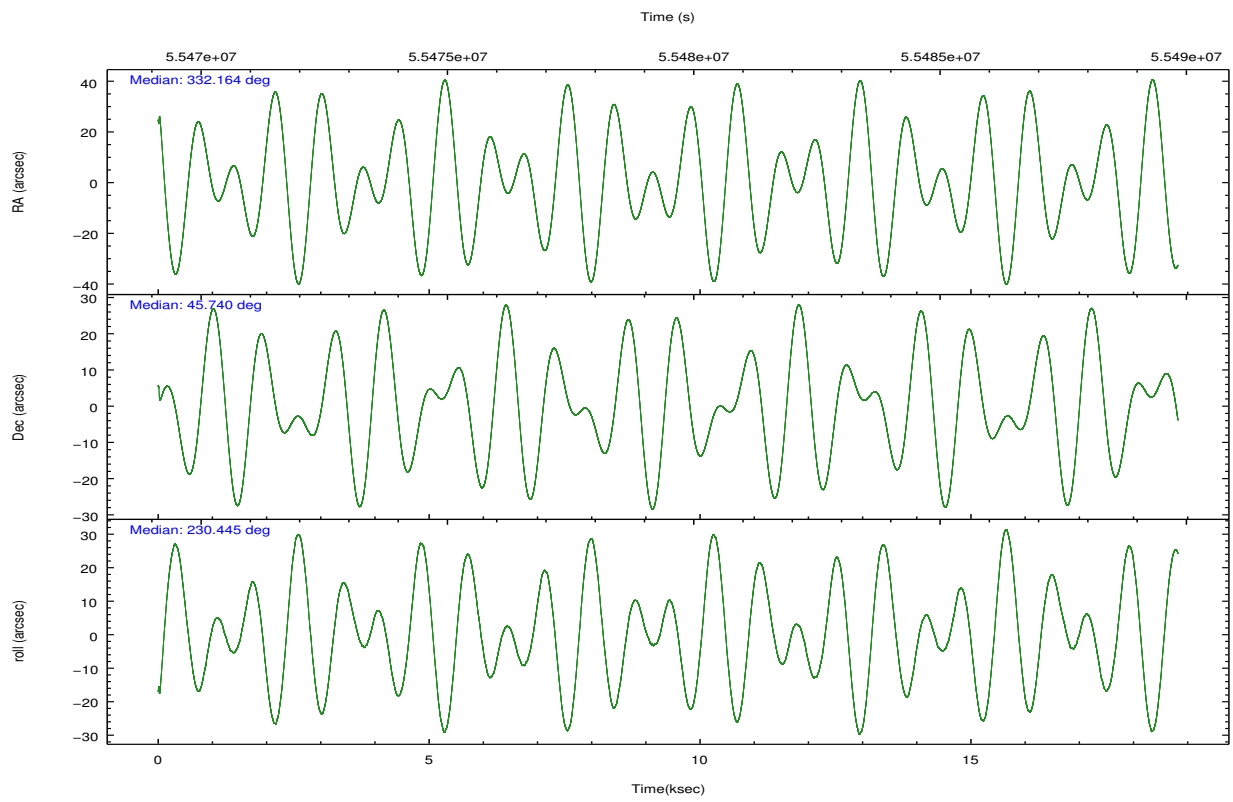
2.2 Compared Parameters

Parameter	Planned	Actual
Instrument	HRC	HRC
Detector	HRC-I	HRC-I
Grating	NONE	NONE
Data mode	OBSERVING	OBSERVING
Observation mode	POINTING	POINTING
Pointing RA	332.170381	332.1639505024124
Pointing Dec	45.767178	45.74025127056596
Pointing Roll	230.534662	230.4437745386623
SIM focus pos (mm)	-1.041718744158295	-1.041718744158295
SIM defocus (mm)	-0.00142615580284966	-0.00142615580284966
SIM translation stage pos (mm)	126.9854943052878	126.9854943052878
SIM translation stage offset (mm)	0	0
Observation start time	55470066.000000	55470066
Observation start date	1999-10-04T23:00:00	1999-10-05T00:21:05
Observation end time	55488888.761436	55488888.761436
Observation end date	1999-10-05T01:46:40	1999-10-05T05:34:48

Parameter	Planned	Actual
Obspar format version number	6	6
Obspar file type	PREDICTED	ACTUAL
Obspar update status	OVERRIDE	OVERRIDE

2.3 Aspect



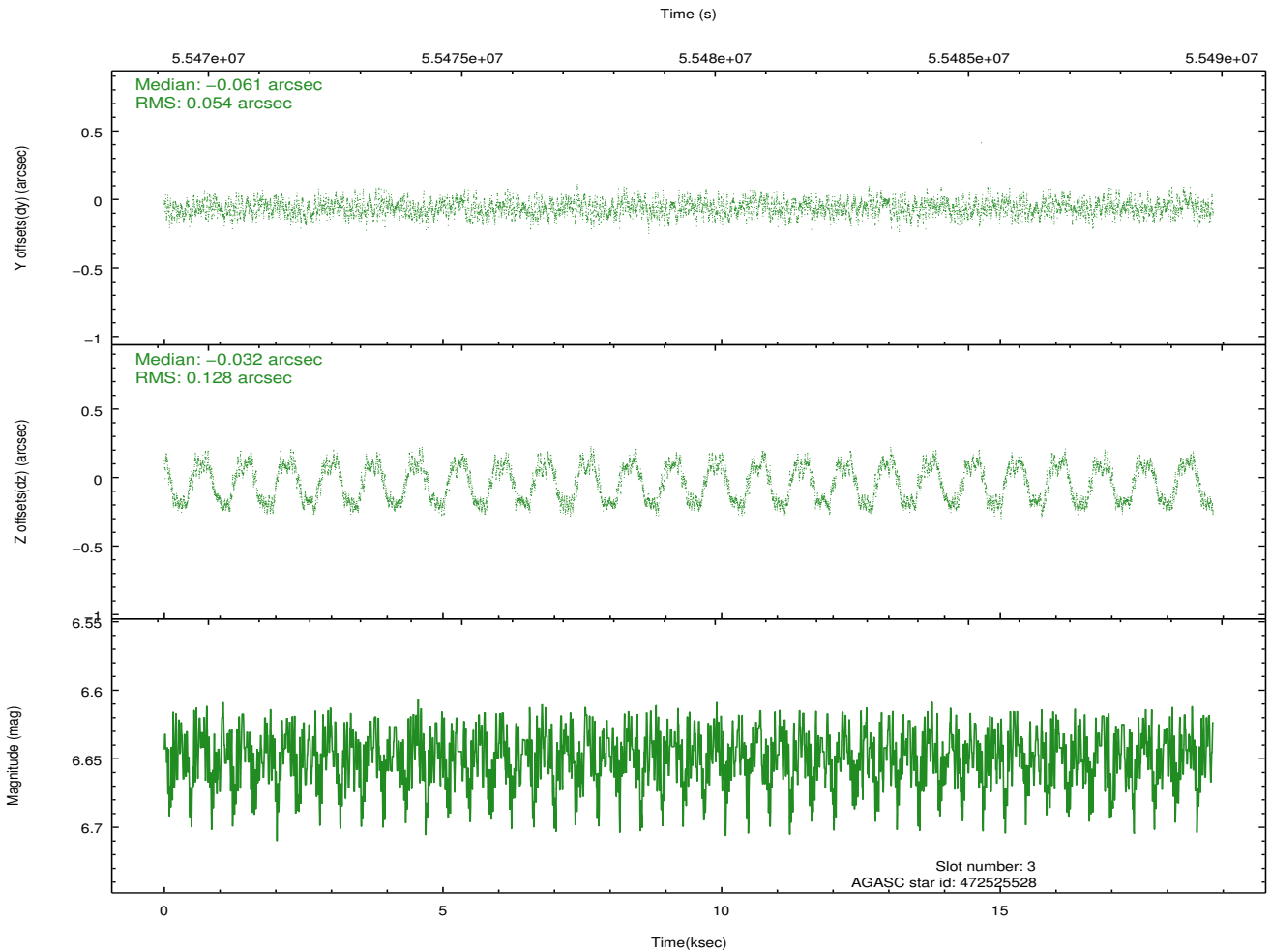
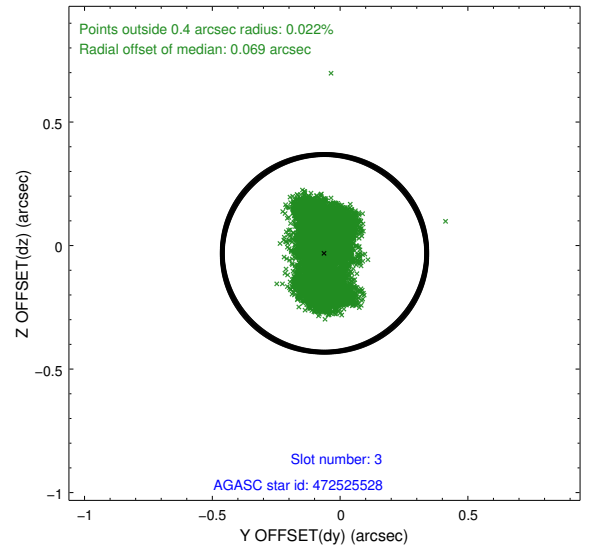
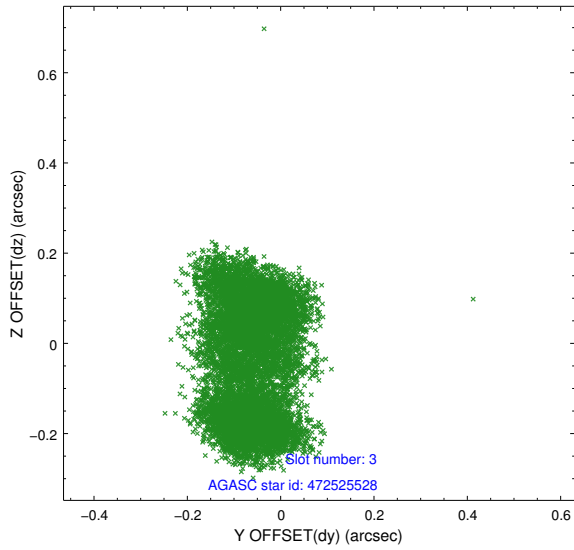


Slot Statistics

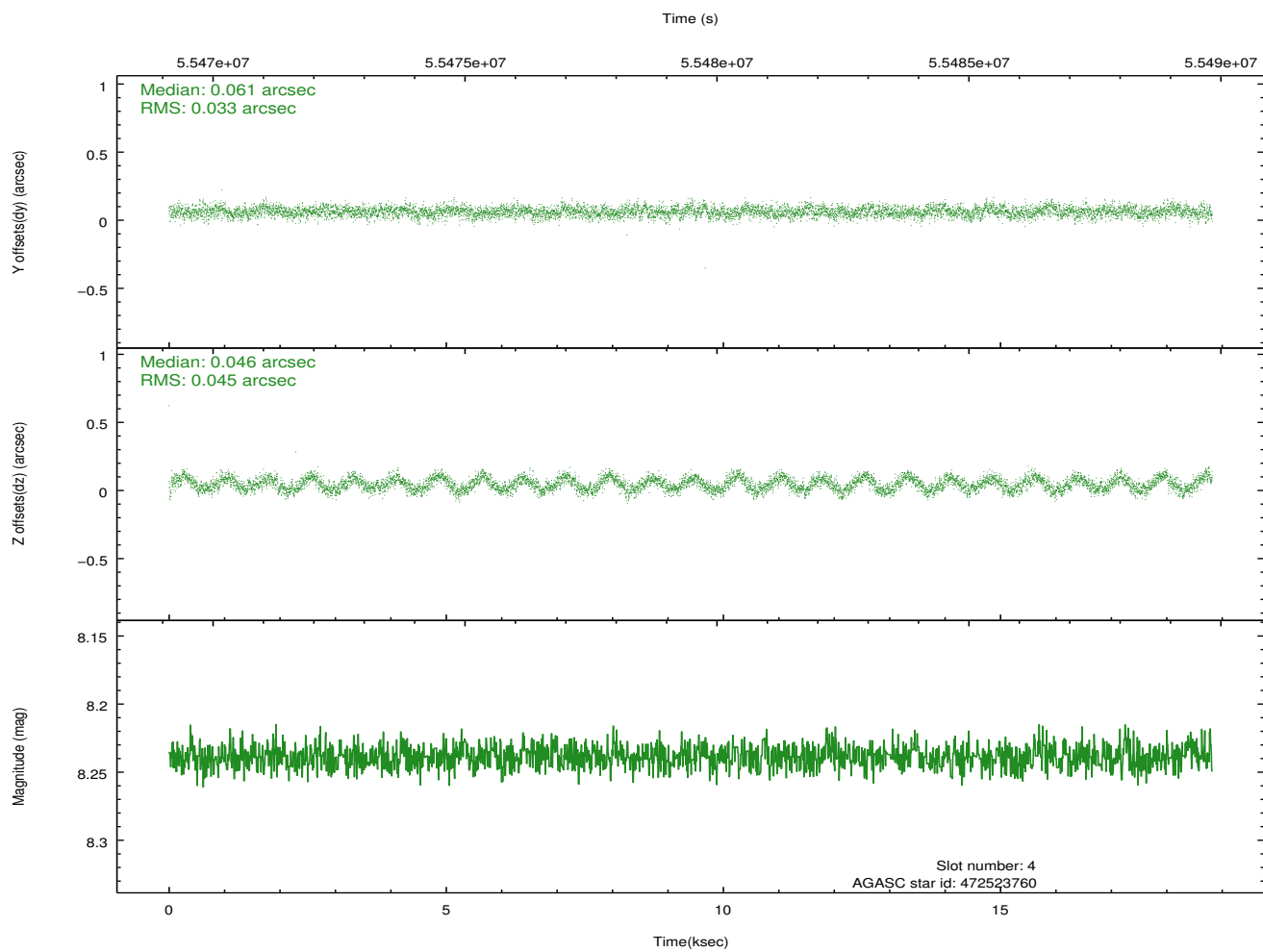
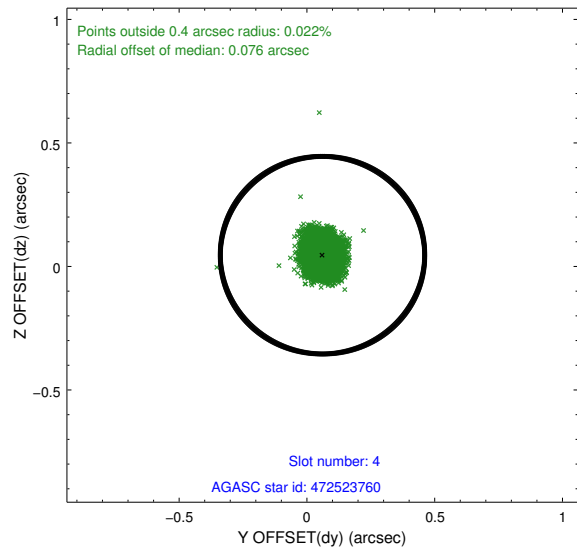
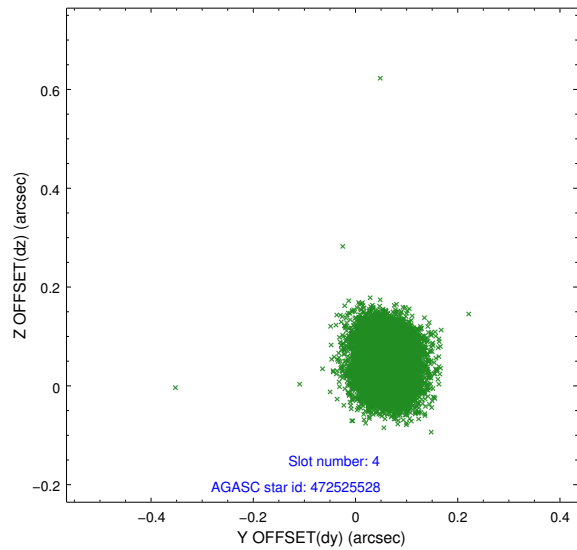
slot	status	id	mag	n_pts	med_dy	med_dz	dr1	dr2	ra	dec	mean_y	mean_z
0	FID	HRC-I-1	6.98	9182	0.035	-0.058	0.007	0.013	0.000000	0.000000	-755.29	-1286.52
1	FID	HRC-I-3	7.06	9182	0.025	-0.008	0.007	0.012	0.000000	0.000000	-1183.93	1017.94
2	FID	HRC-I-4	7.00	9182	0.055	-0.023	0.007	0.012	0.000000	0.000000	1287.33	1015.84
3	GUIDE	472525528	6.65	9180	-0.061	-0.032	0.157	0.207	331.551102	45.248694	2433.85	-28.31
4	GUIDE	472523760	8.24	9178	0.061	0.046	0.060	0.092	331.645363	45.403260	1851.82	-193.57
5	GUIDE	472665256	9.00	9176	0.001	-0.041	0.068	0.106	332.808125	46.195041	-2203.99	244.72
6	GUIDE	472659832	9.46	9170	-0.014	0.049	0.090	0.150	332.780399	46.098139	-1892.50	415.67
7	GUIDE	472655152	9.43	9170	0.009	-0.011	0.096	0.153	332.504239	45.862991	-799.86	426.78

2.4 Star Slots

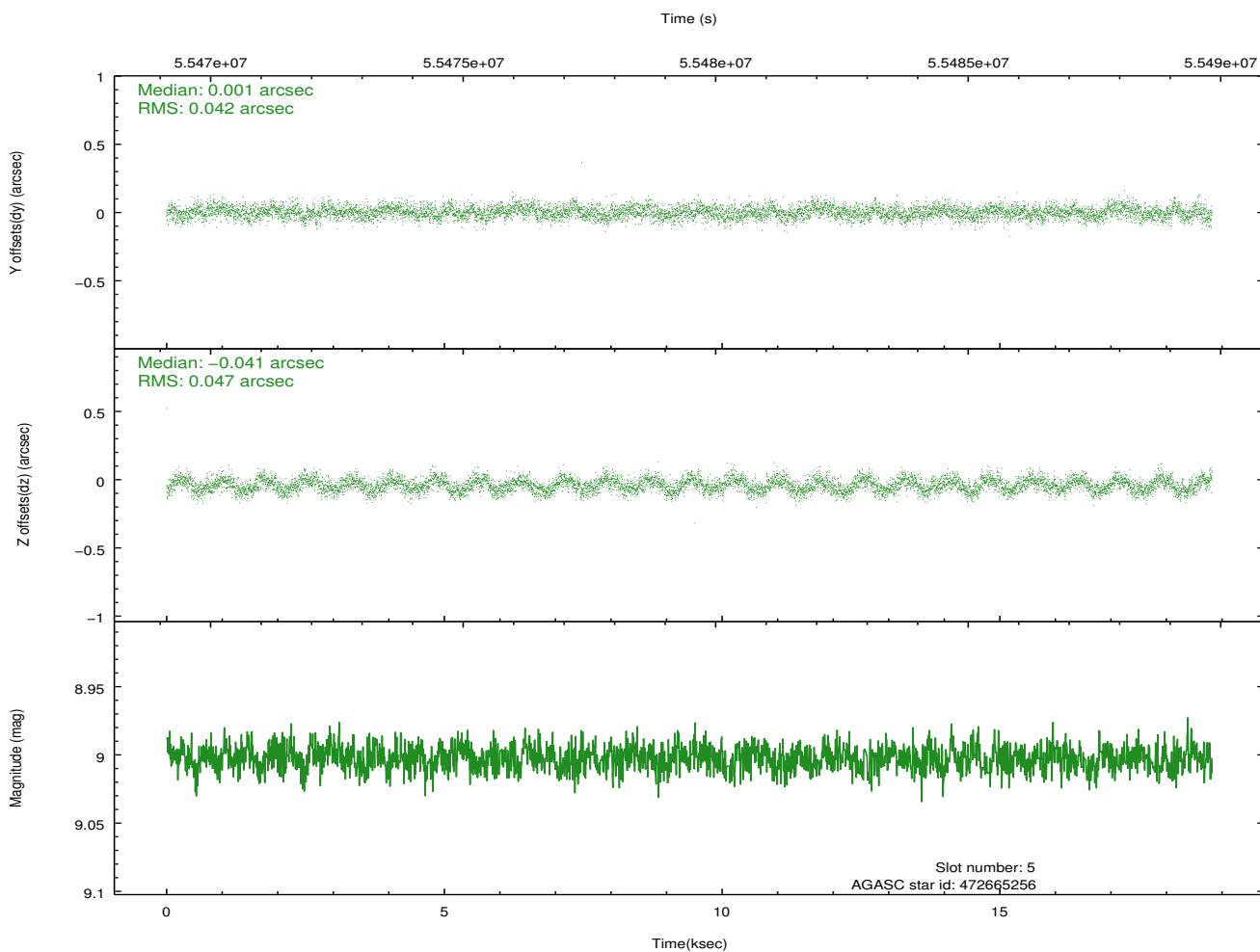
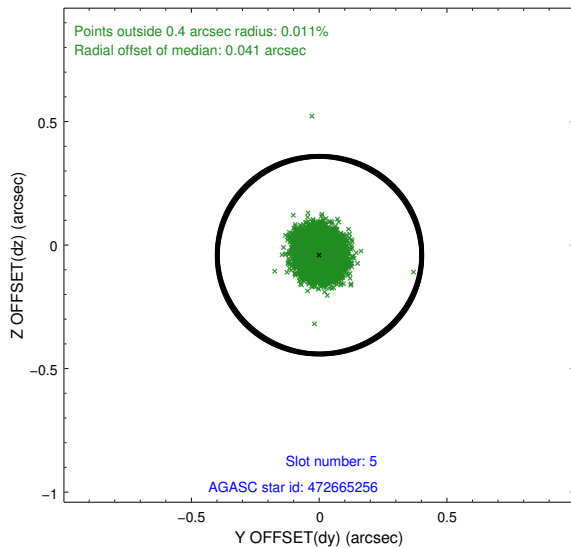
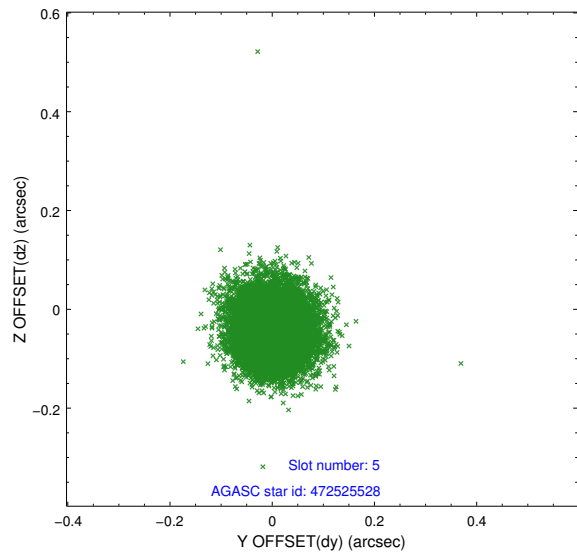
2.4.1 Slot 3



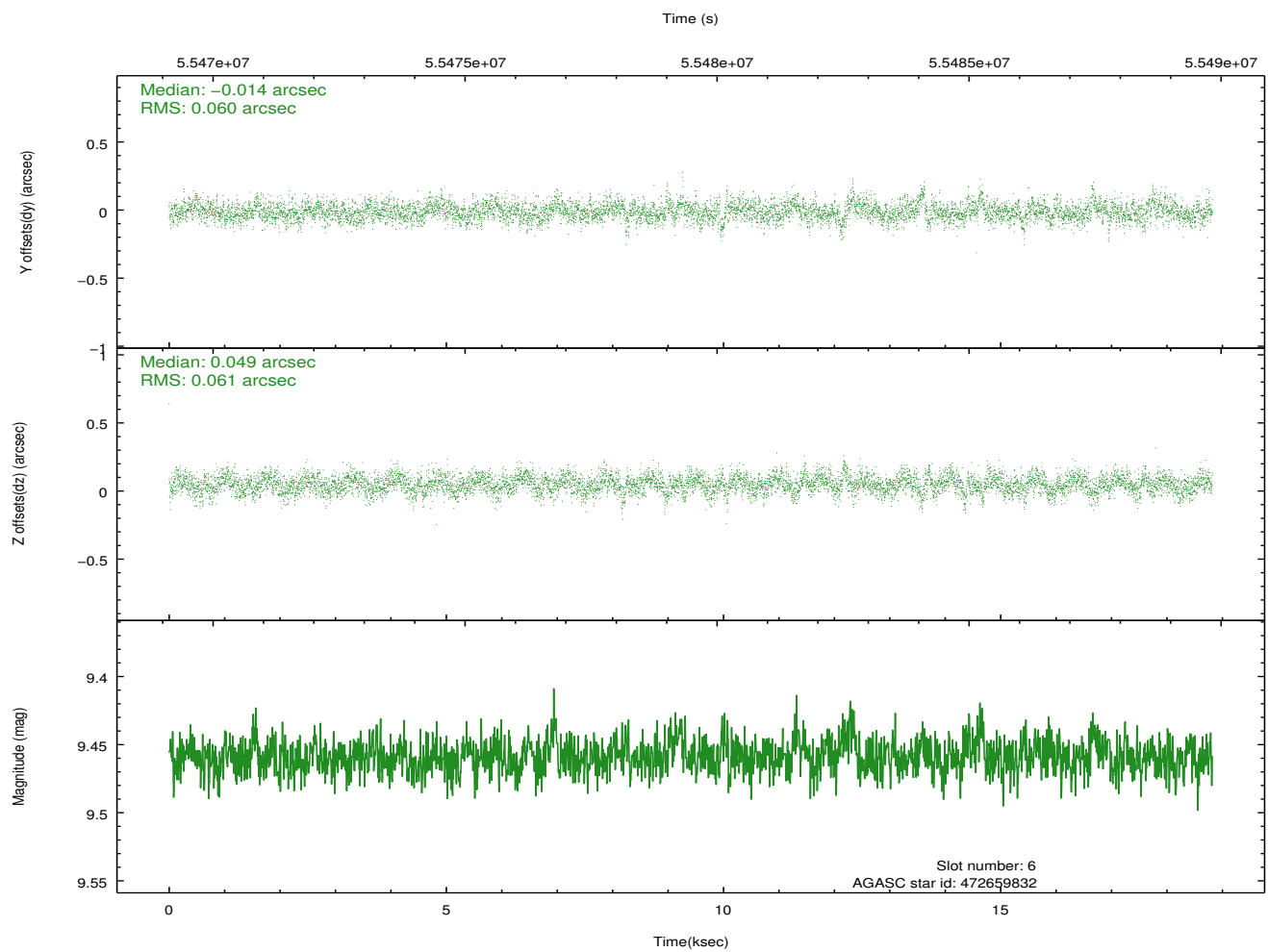
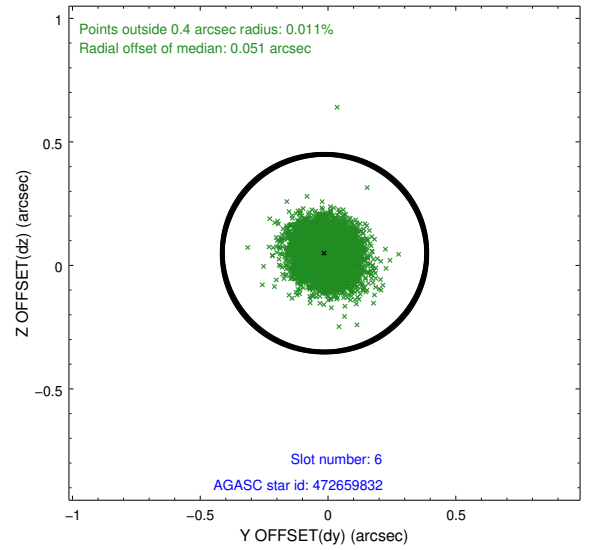
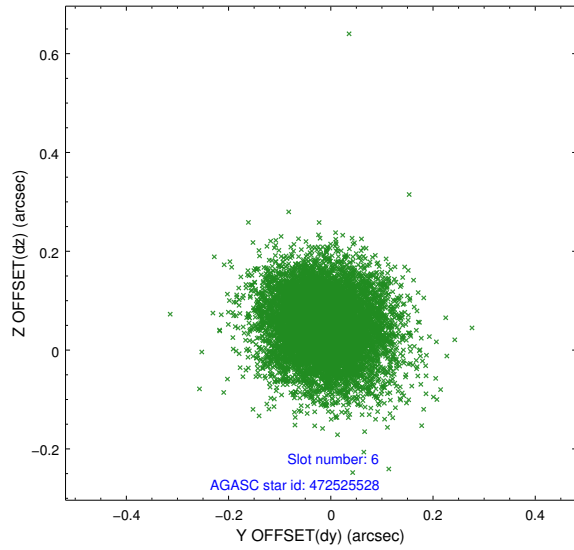
2.4.2 Slot 4



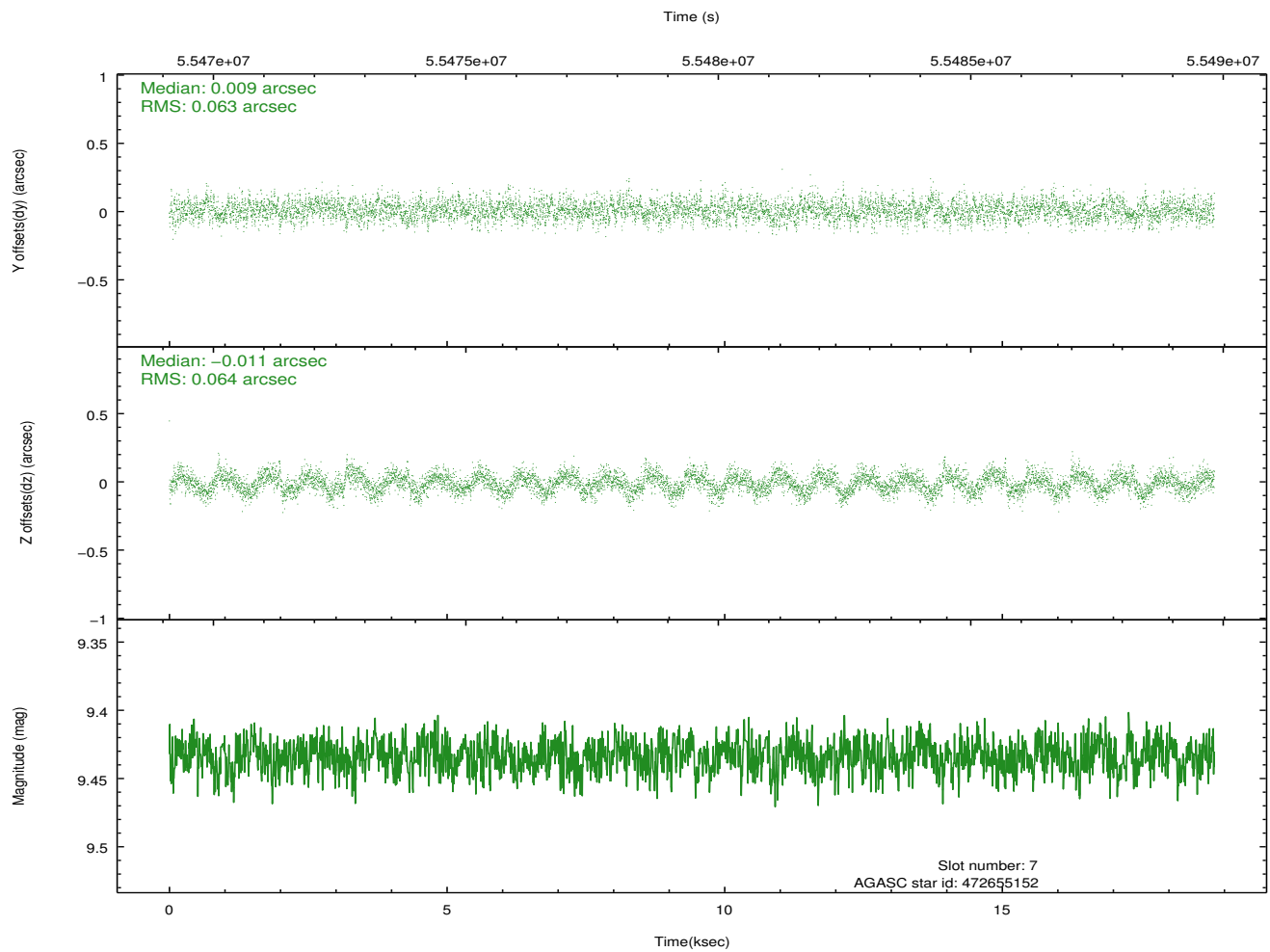
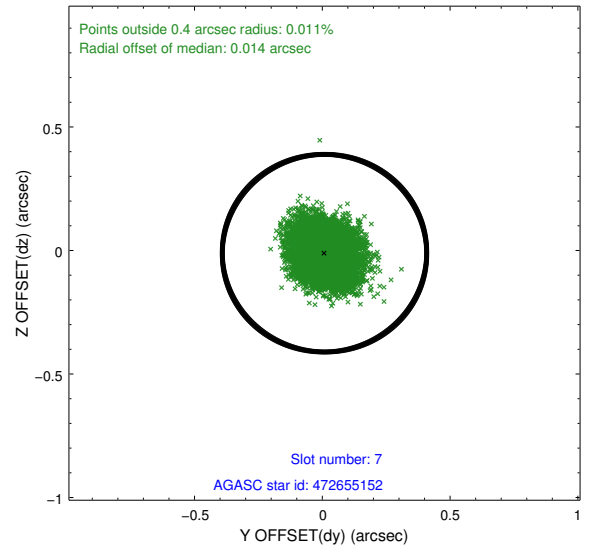
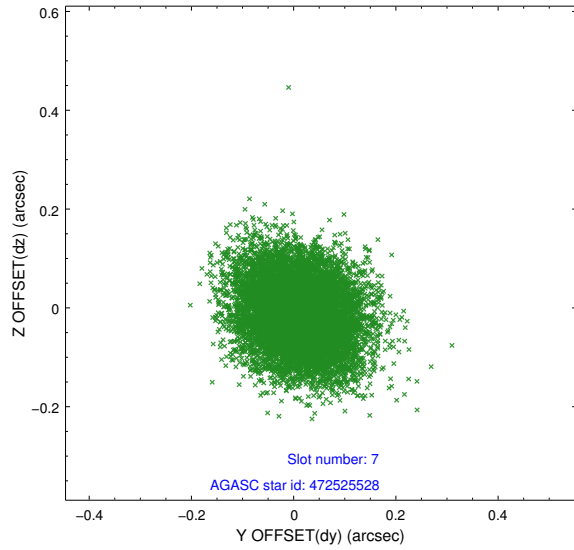
2.4.3 Slot 5



2.4.4 Slot 6

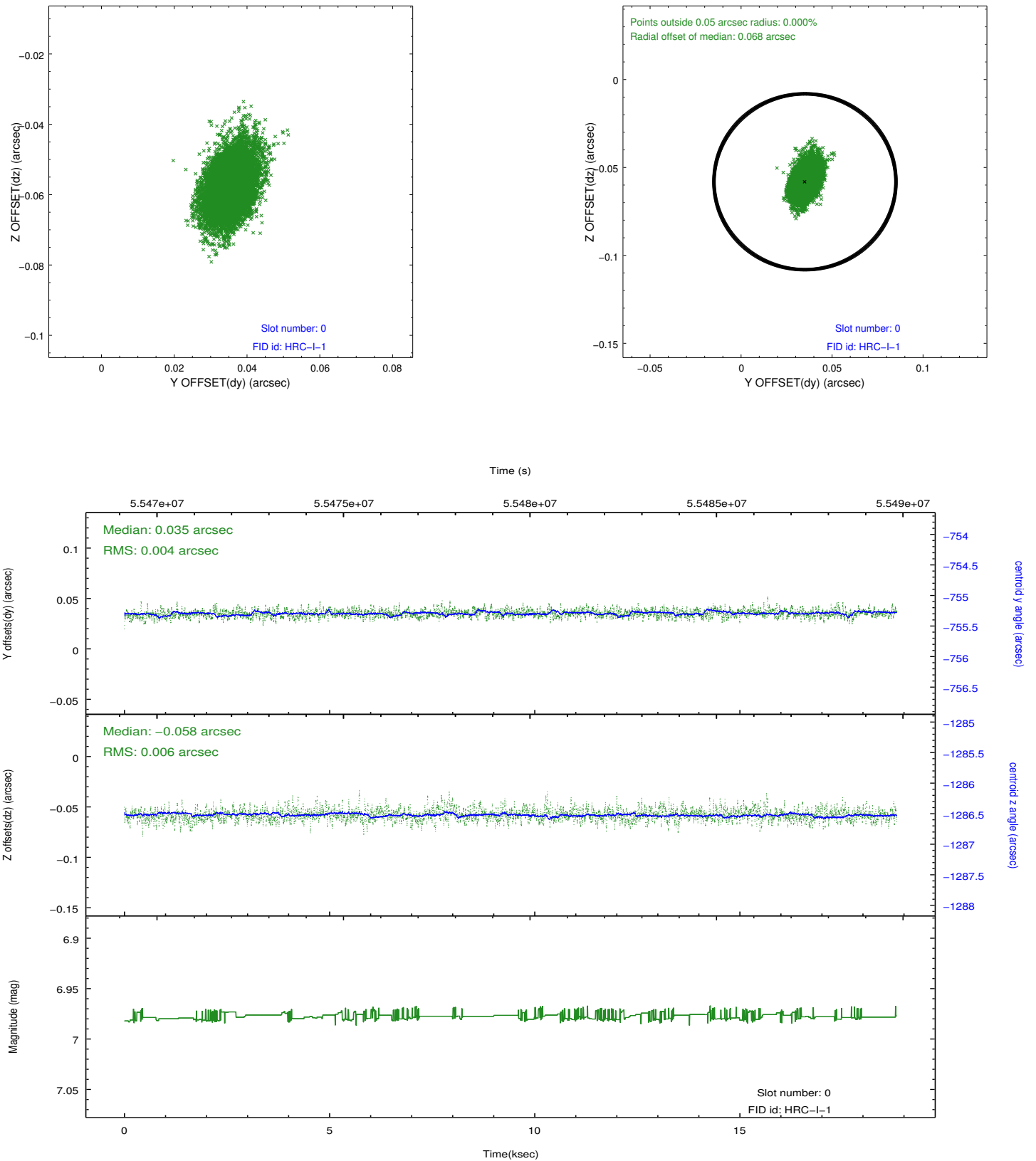


2.4.5 Slot 7

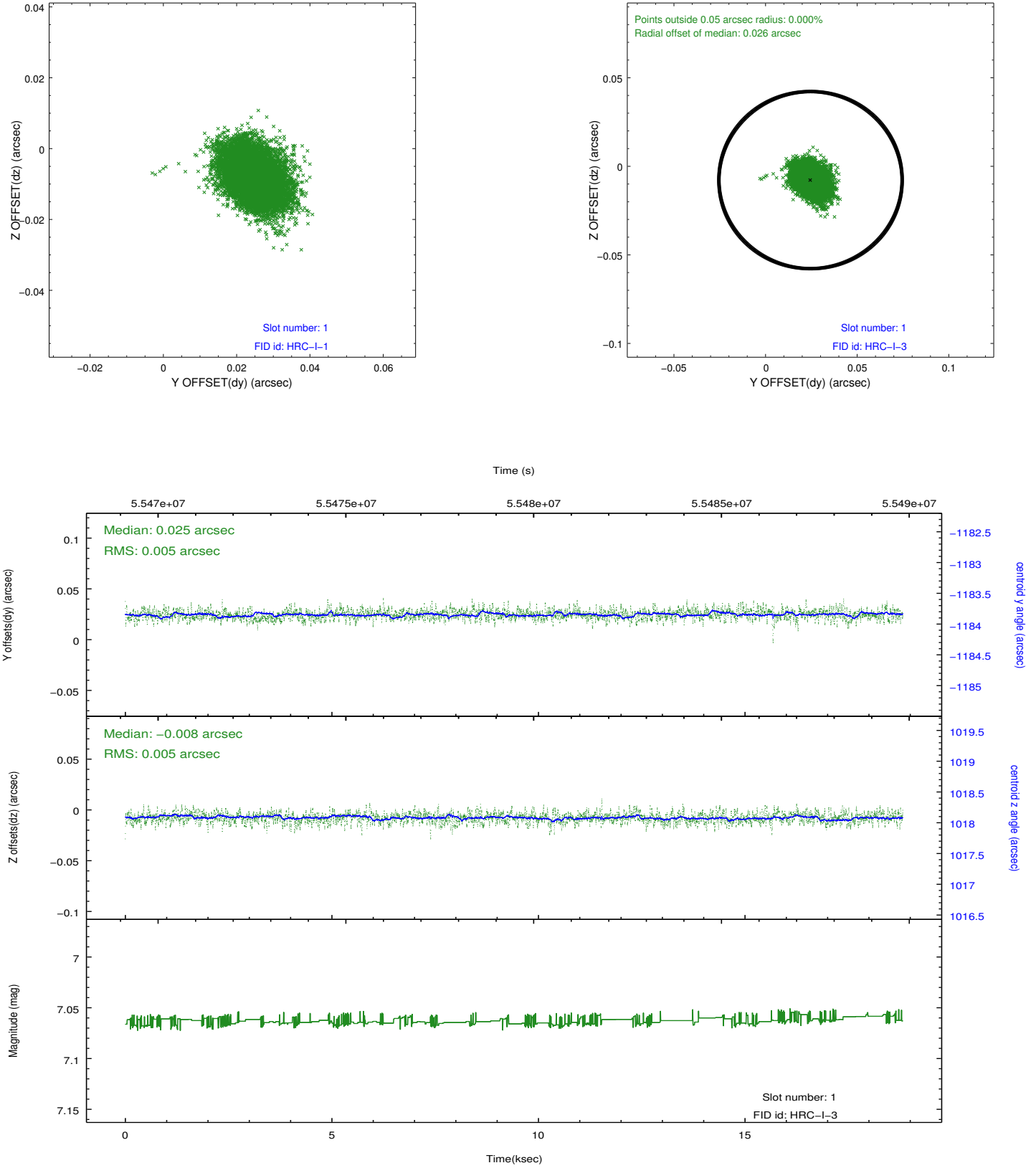


2.5 FID Slots

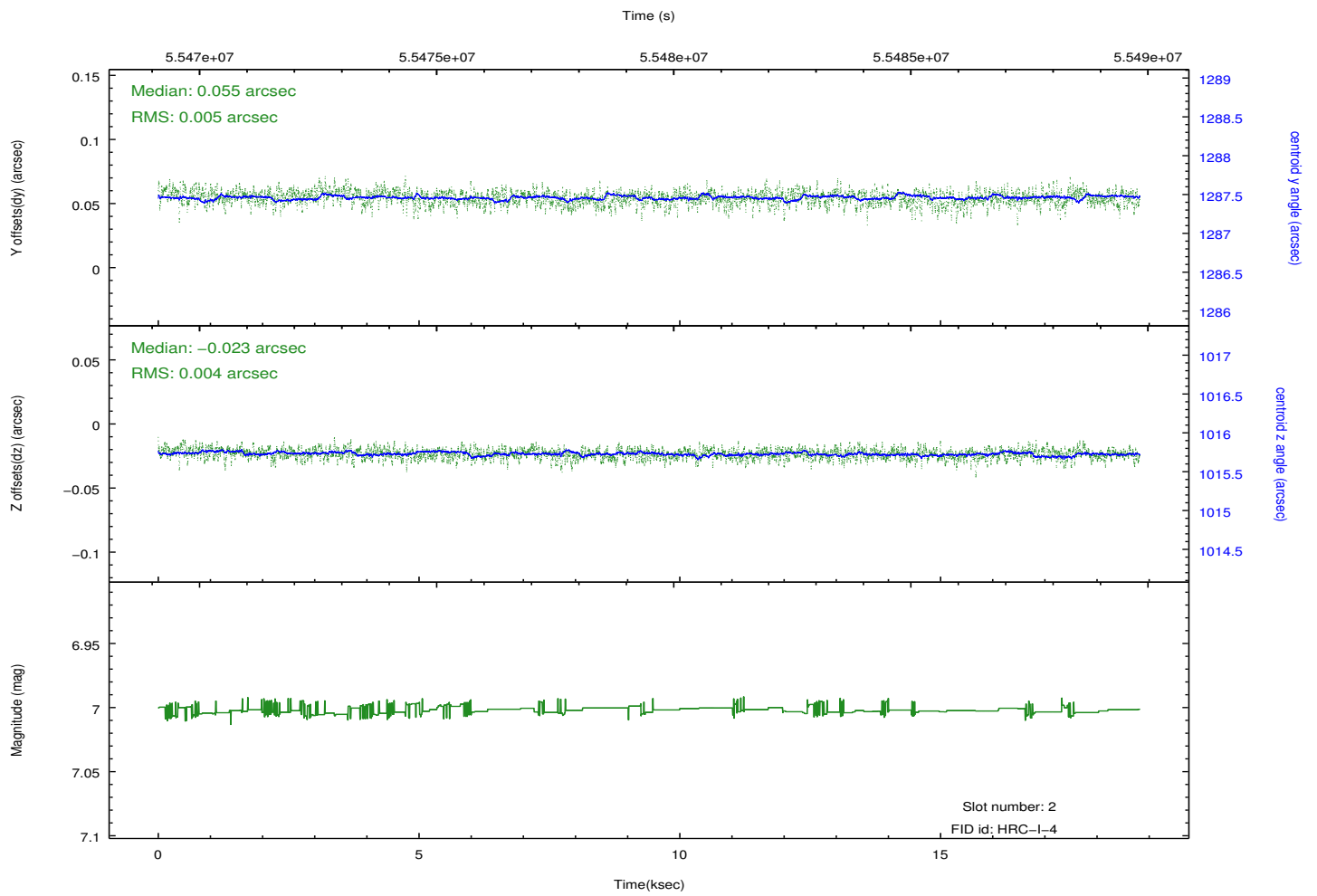
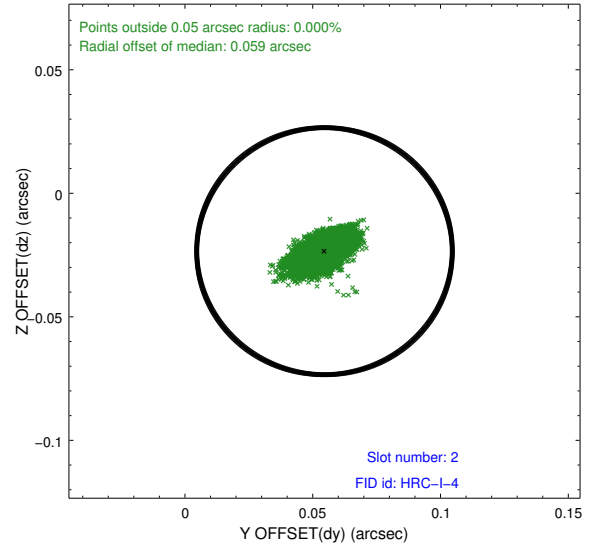
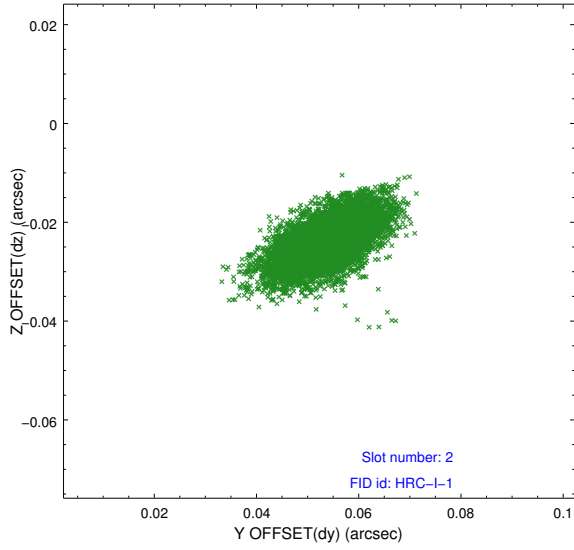
2.5.1 Slot 0



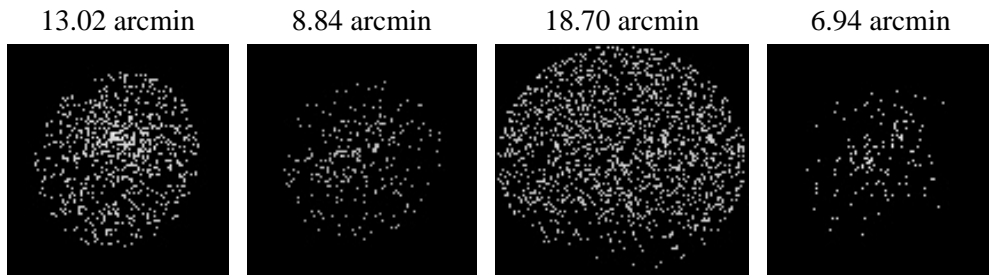
2.5.2 Slot 1



2.5.3 Slot 2



3 Point Sources



A Summary

A.1 Status

V&V Scientist	Joy Nichols
V&V Date (YYYY-MM-DD)	2010.01.20
V&V Edition	1
V&V Disposition and Status	OK
V&V Charge Time	18.975

A.2 Comments

This observation was taken with the best MCP high voltage value and the best focus value, as determined from earlier calibration observations.

=====

Charge time for this ObsId remains at original value of 18.975 ks, although with the current processing the charge time would have been 18.761 ksec.

=====