

V&V Reference Report

L2 ASCDS Version : 8.4.5

Observation 13935 - L2 Version 1
Chandra X-Ray Center

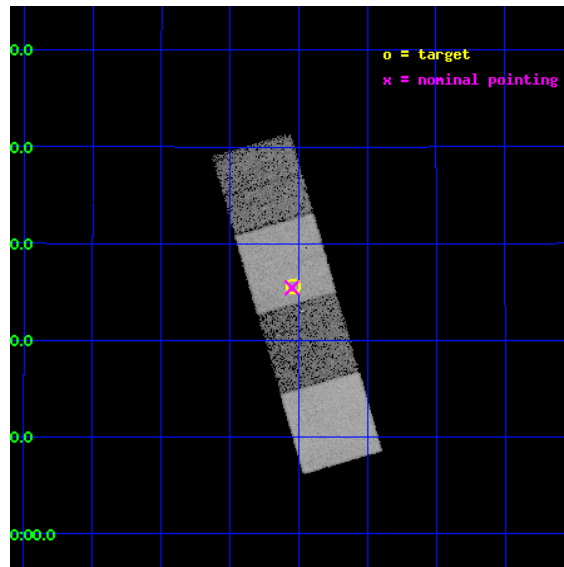
L2 Processing Date : Jul 12 2012

Contents

1	Front	2
2	OBI	3
2.1	OBI	3
2.1.1	Images	3
2.1.2	Bias	3
2.1.3	Parameters	4
2.1.4	Events	4
2.2	Compared Parameters	5
2.3	Aspect	6
2.4	Star Slots	9
2.4.1	Slot 3	9
2.4.2	Slot 4	10
2.4.3	Slot 5	11
2.4.4	Slot 6	12
2.4.5	Slot 7	13
2.5	FID Slots	14
2.5.1	Slot 0	14
2.5.2	Slot 1	15
2.5.3	Slot 2	16
A	Summary	17
A.1	Status	17
A.2	Comments	17

1 Front

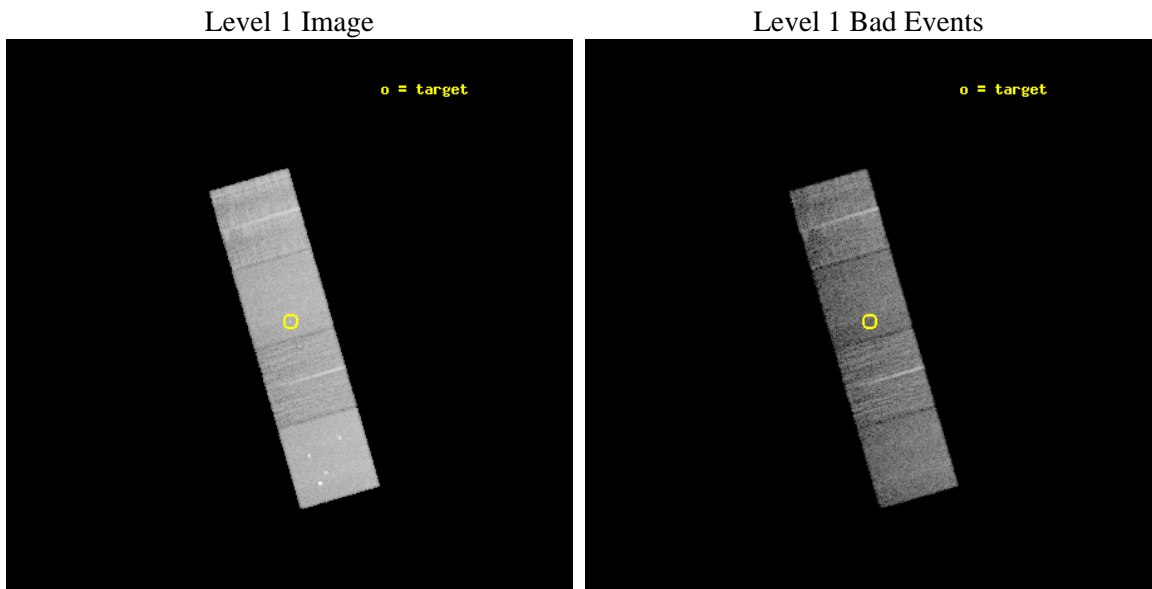
seq_num	702659	Sequence number
obs_id	13935	Observation id
title	Probing the High End of the Quasar Black Hole Mass Function	Propos
observer	Dr. Martin Elvis	Principal investigator
object	SDSS J114702.51+162534.5	Source name
dtcycle	0	
cycle	P	events from which exps? Prim/Second/Both
ra_targ	176.760417	Observer's specified target RA [deg]
dec_targ	16.426278	Observer's specified target Dec [deg]
ra_nom	176.76250270059	Nominal RA [deg]
dec_nom	16.424004988658	Nominal Dec [deg]
roll_nom	253.71053458756	Nominal Roll [deg]
revision	1	Processing version of data
ontime	14073.306898713	Sum of GTIs [s]
livetime	13889.428783464	Livetime [s]
ontime5	14073.26585871	Sum of GTIs [s]
ontime6	14073.224818707	Sum of GTIs [s]
ontime7	14073.306898713	Sum of GTIs [s]
ontime8	14073.183778703	Sum of GTIs [s]
l2events	121830	Number of level 2 events



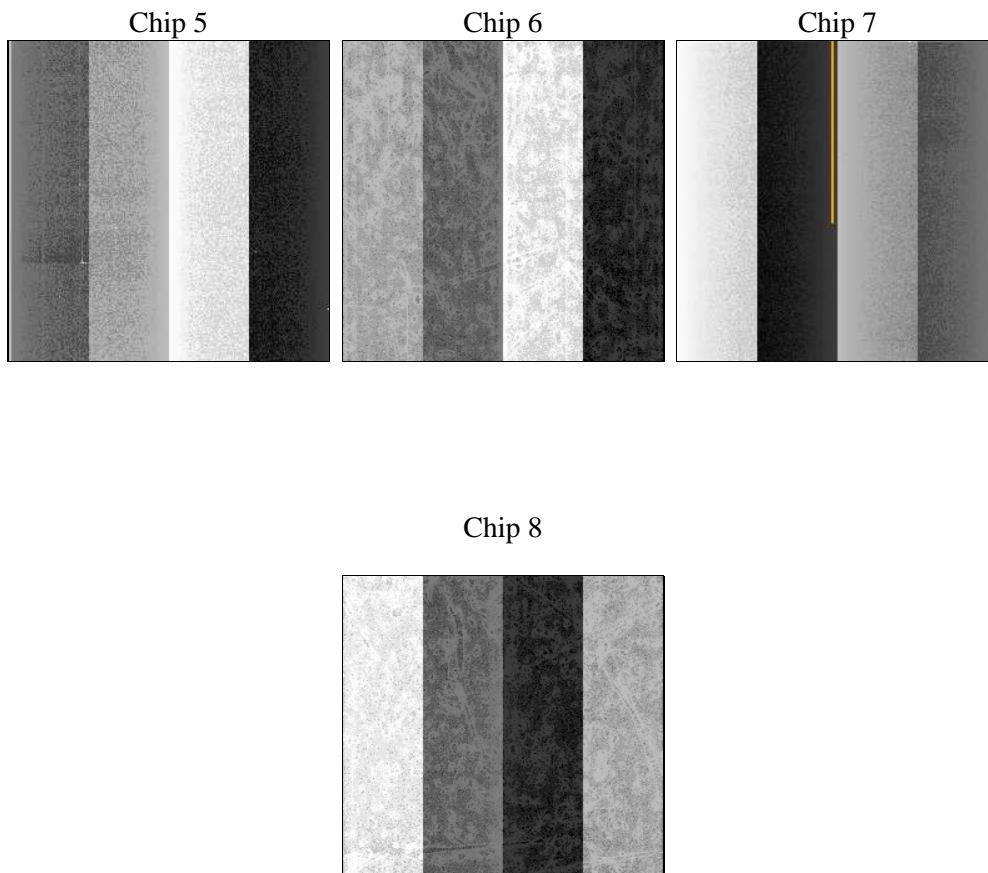
2 OBI

2.1 OBI

2.1.1 Images



2.1.2 Bias



2.1.3 Parameters

obi_num	0	Obi number	sched_exp_time	14000.000000	[s] Scheduled observation exposure time
ascdsver	8.4.5	Processing system revision	ontime	14073.306898713	Sum of GTIs [s]
caldsver	4.5.0	 	ontime5	14073.26585871	Sum of GTIs [s]
date	2012-07-12T12:52:10	Date and time of file creation	ontime6	14073.224818707	Sum of GTIs [s]
revision	1	Processing version of data	ontime7	14073.306898713	Sum of GTIs [s]
			ontime8	14073.183778703	Sum of GTIs [s]
			l1events	416835	Number of level 1 events

2.1.4 Events

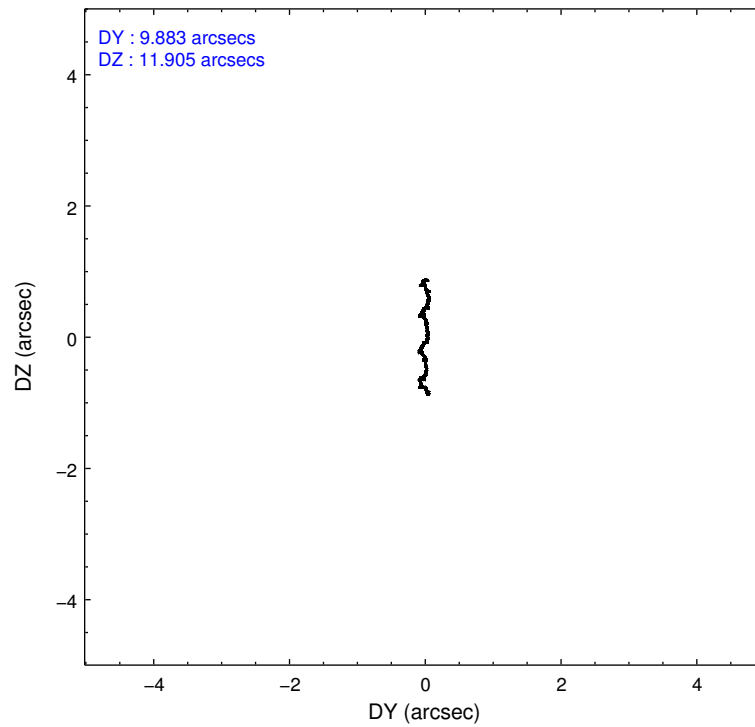
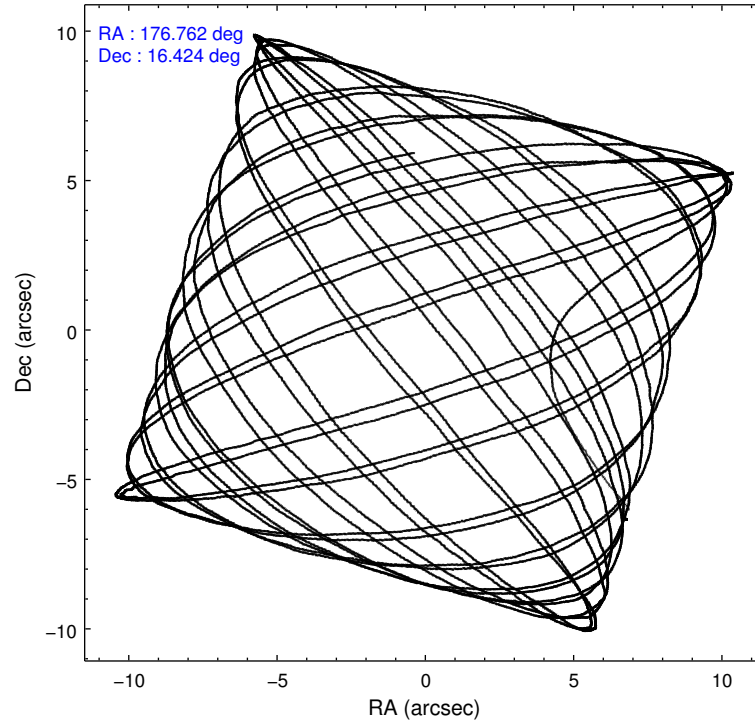
	ccd 5	ccd 6	ccd 7	ccd 8
level 1 events	127559	80905	104360	104011
rejected events	64469	71426	57690	75169
rejected %	50%	88%	55%	72%

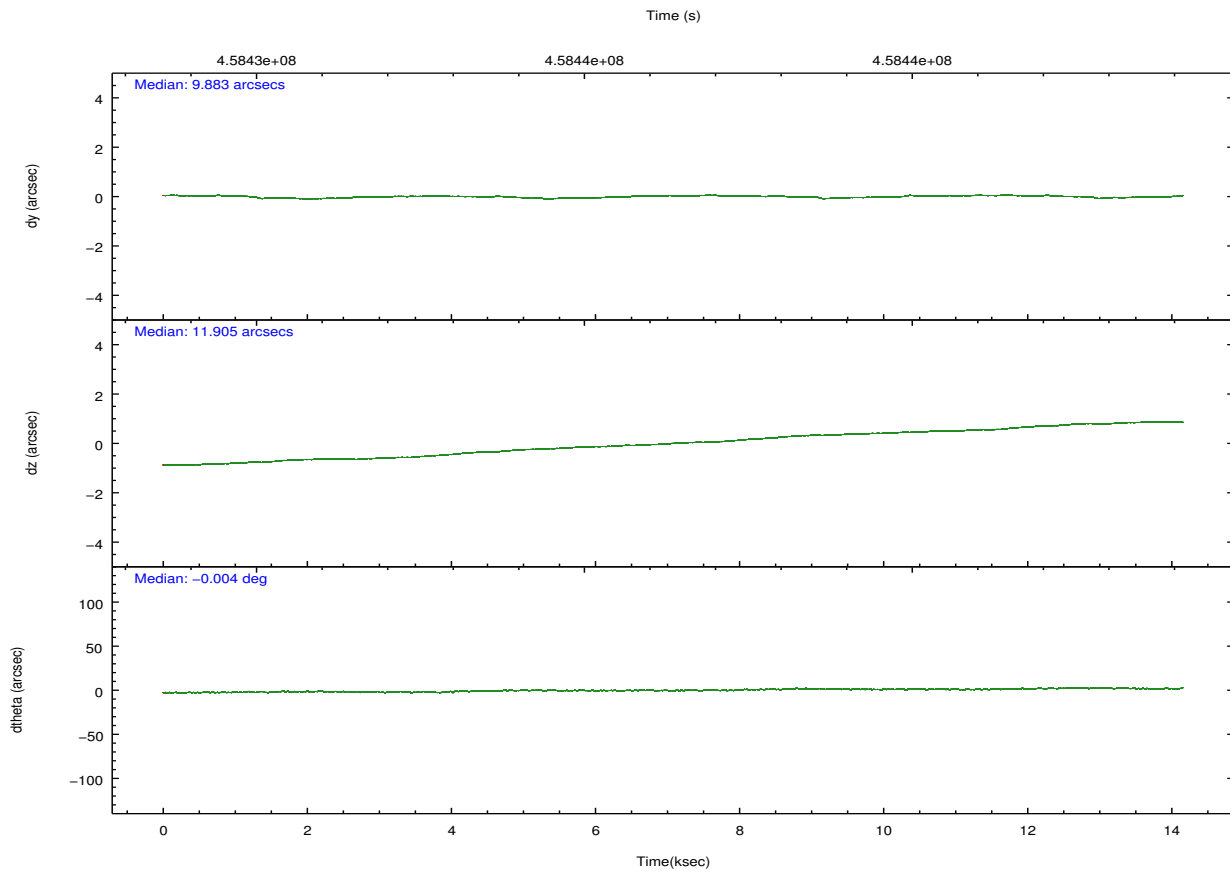
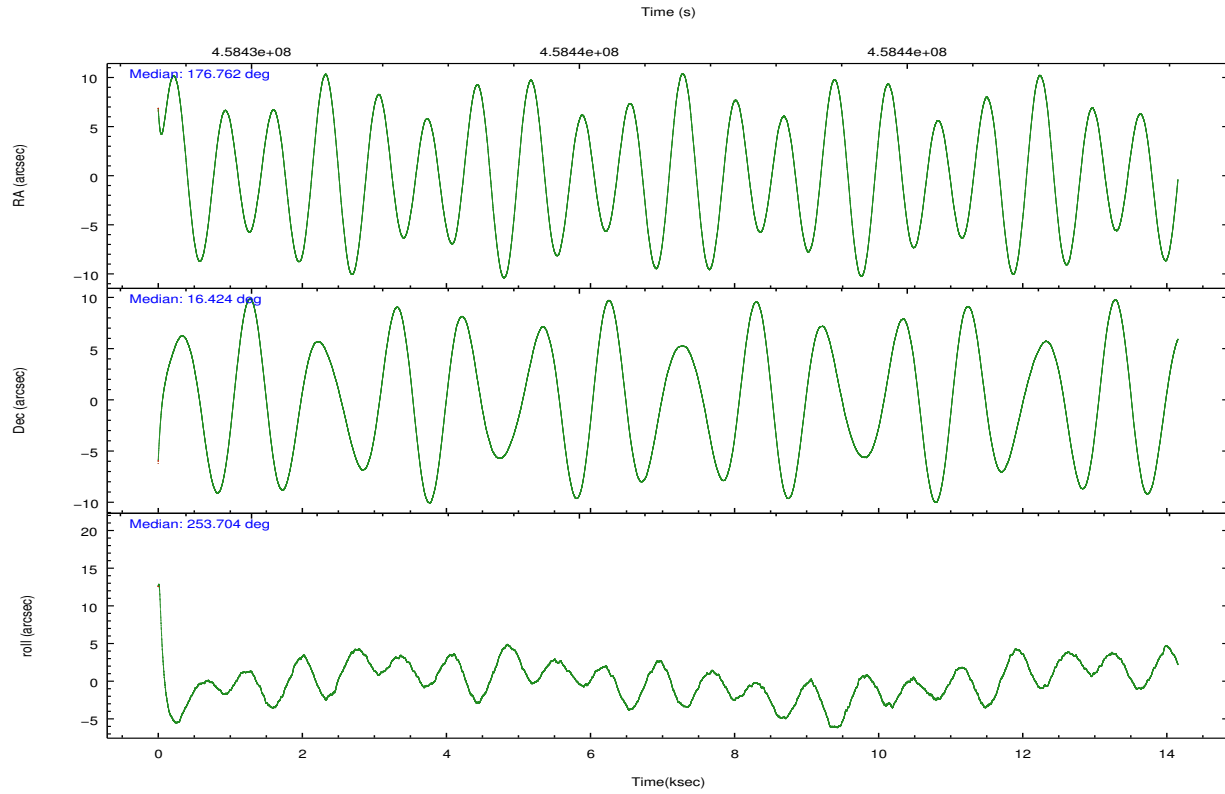
	ccd 5	ccd 6	ccd 7	ccd 8
grade 0 events	7074	3238	4371	8745
	5%	4%	4%	8%
grade 1 events	226	42	104	93
	0%	0%	0%	0%
grade 2 events	19098	2148	9603	6635
	14%	2%	9%	6%
grade 3 events	2175	977	4081	3008
	1%	1%	3%	2%
grade 4 events	2085	976	4136	2853
	1%	1%	3%	2%
grade 5 events	9573	3886	10863	5686
	7%	4%	10%	5%
grade 6 events	32670	2146	24491	7612
	25%	2%	23%	7%
grade 7 events	54658	67492	46711	69379
	42%	83%	44%	66%

2.2 Compared Parameters

Parameter	Planned	Actual	Parameter	Planned	Actual
Instrument	ACIS	ACIS	Obspar format version number	7	7
Detector	ACIS-5678	ACIS-5678	Obspar file type	PREDICTED	ACTUAL
Grating	NONE	NONE	Obspar update status	NONE	UPDATED
Data mode	FAINT	FAINT	Number of optional ACIS chips dropped	0	0
Observation mode	POINTING	POINTING	On-chip summing requested	N	N
[deg] Pointing RA	176.755353	176.7625027005933	Subarray requested	NONE	NONE
[deg] Pointing Dec	16.450474	16.42400498865781	Alternating exposures requested	N	N
[deg] Pointing Roll	253.555926	253.7105345875613	[s] Primary exposure time	0.000000	3.1
[mm] SIM focus pos	-0.684267	-0.6828225247311905			
[mm] SIM defocus	0	0.001444936568705701			
[mm] SIM translation stage pos	-190.132523	-190.1400660498719			
[mm] SIM translation stage offset	0	0.00754346686406393			
[s] Observation start time (MET)	458429435.184000	458428225.68901			
Observation start date	2012-07-11T21:29:28	2012-07-11T21:10:25			
[s] Observation end time (MET)	458443435.184000	458443932.78985			
Observation end date	2012-07-12T01:22:48	2012-07-12T01:32:12			
Read mode	TIMED	TIMED			

2.3 Aspect



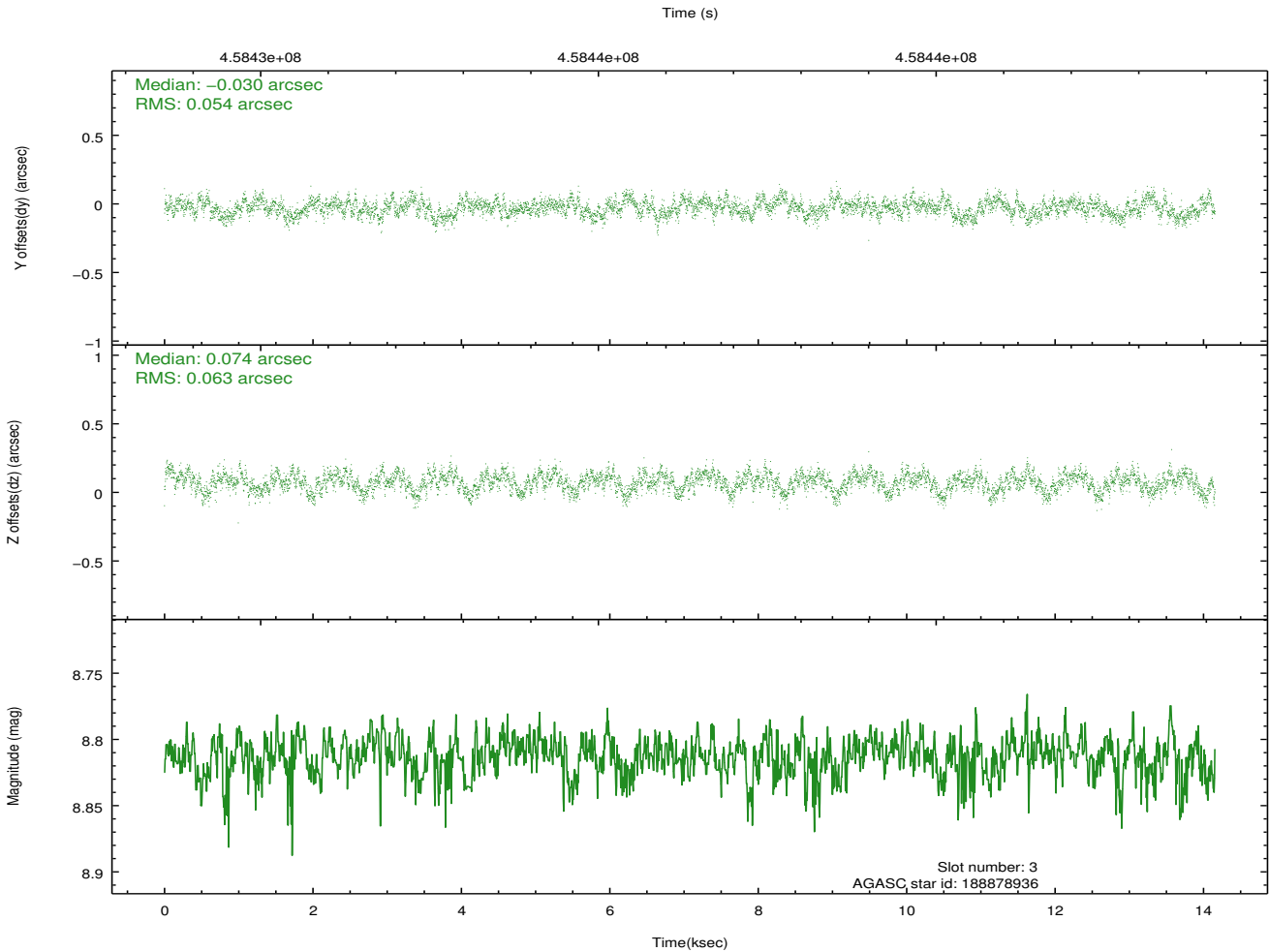
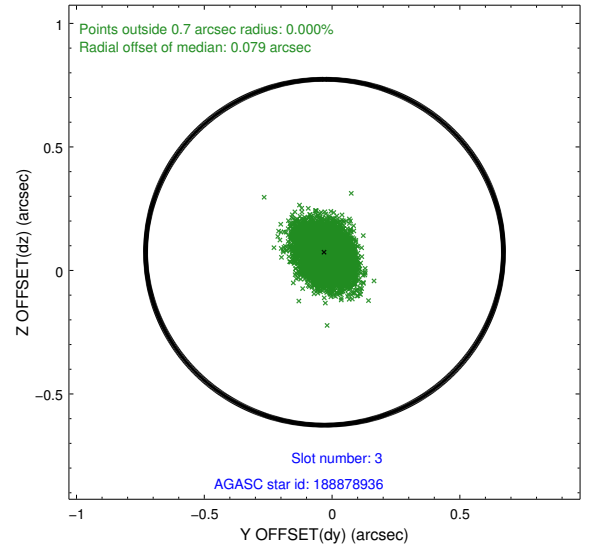
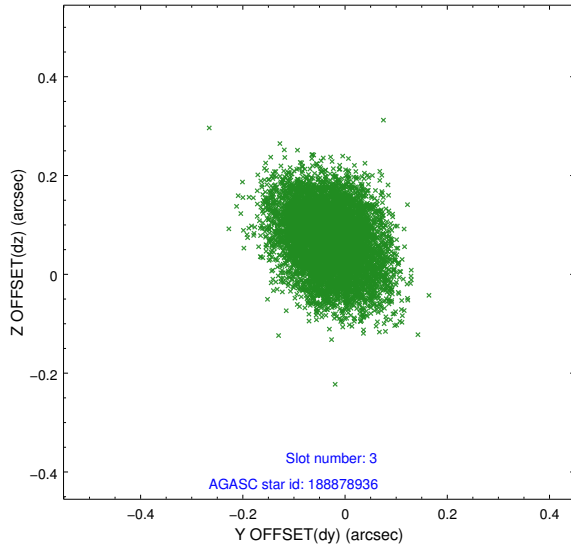


Slot Statistics

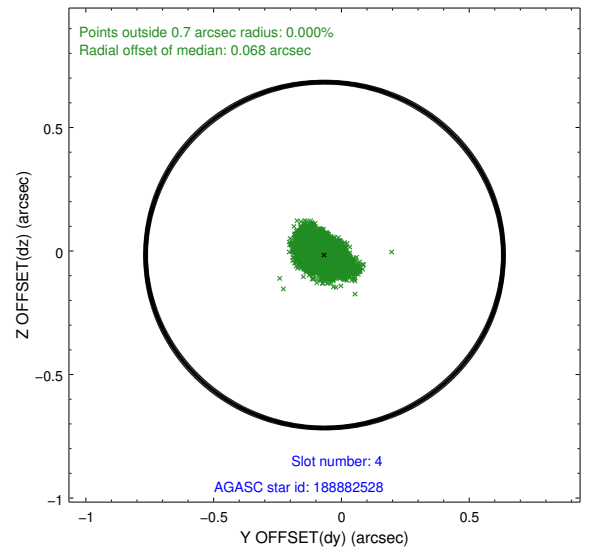
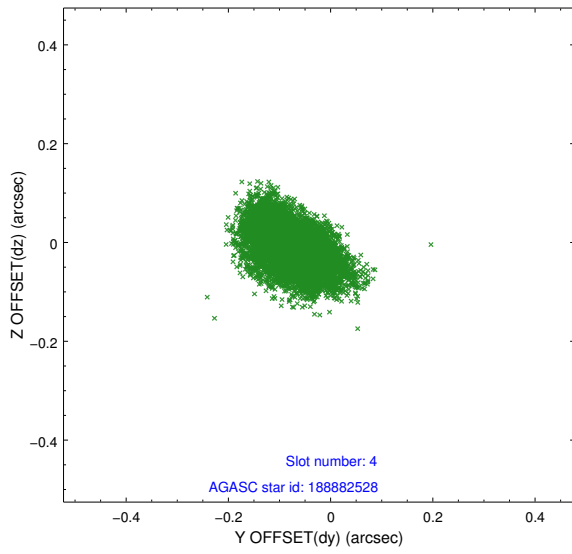
slot	status	id	mag	n_pts	med_dy	med_dz	dr1	dr2	ra	dec	mean_y	mean_z
0	FID	ACIS-S-2	6.94	3453	-0.057	-0.015	0.019	0.026	0.000000	0.000000	-762.78	-1733.22
1	FID	ACIS-S-4	7.03	3453	0.188	0.032	0.012	0.022	0.000000	0.000000	2150.61	174.96
2	FID	ACIS-S-5	7.06	3453	-0.162	-0.008	0.016	0.023	0.000000	0.000000	-1815.29	168.99
3	GUIDE	188878936	8.81	6881	-0.030	0.074	0.089	0.142	177.396304	16.597370	-1136.88	1970.27
4	GUIDE	188882528	6.36	6906	-0.066	-0.016	0.069	0.113	177.311621	16.242882	170.23	2055.84
5	GUIDE	188883000	8.29	6906	-0.051	0.032	0.071	0.132	176.266283	17.159978	-1974.88	-2337.17
6	GUIDE	188883680	9.01	6901	0.242	-0.133	0.101	0.162	176.750249	16.209821	836.43	227.47
7	GUIDE	188884544	6.69	6905	-0.099	0.047	0.069	0.107	177.257701	16.132446	604.18	1989.66

2.4 Star Slots

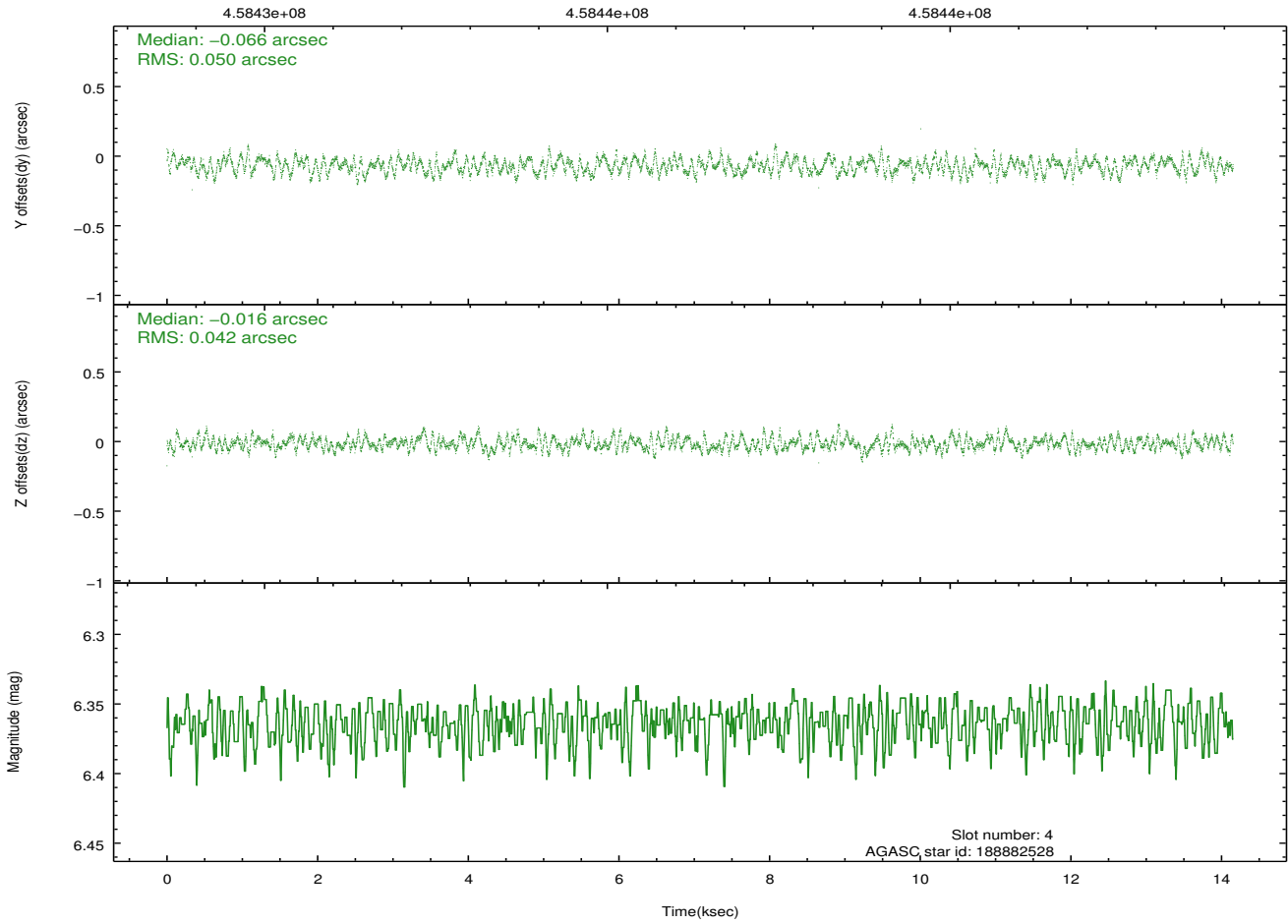
2.4.1 Slot 3



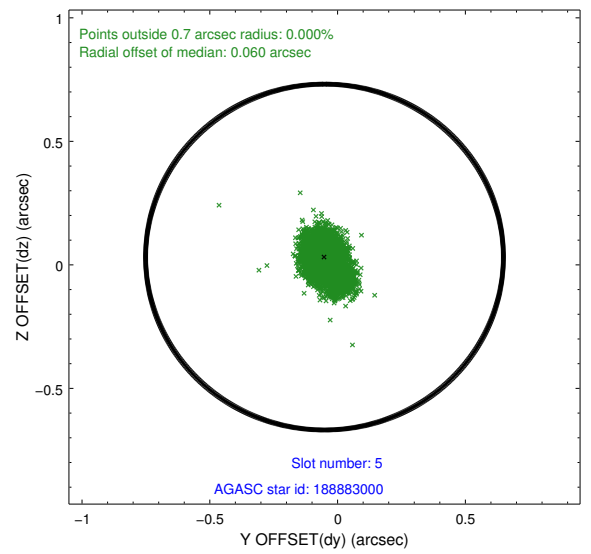
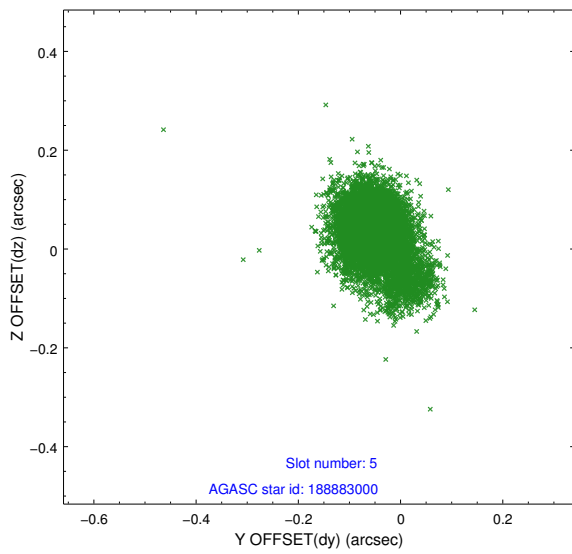
2.4.2 Slot 4



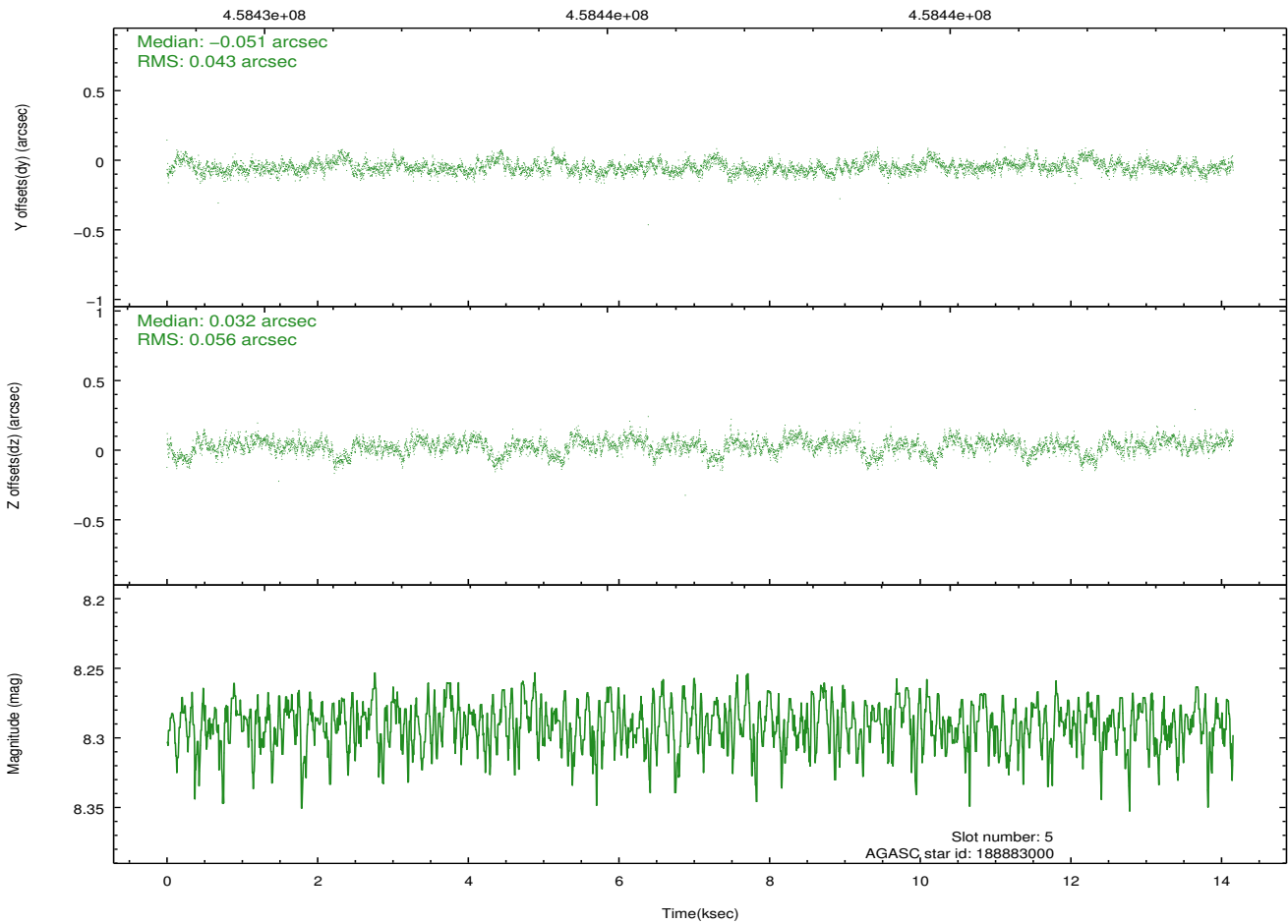
Time (s)



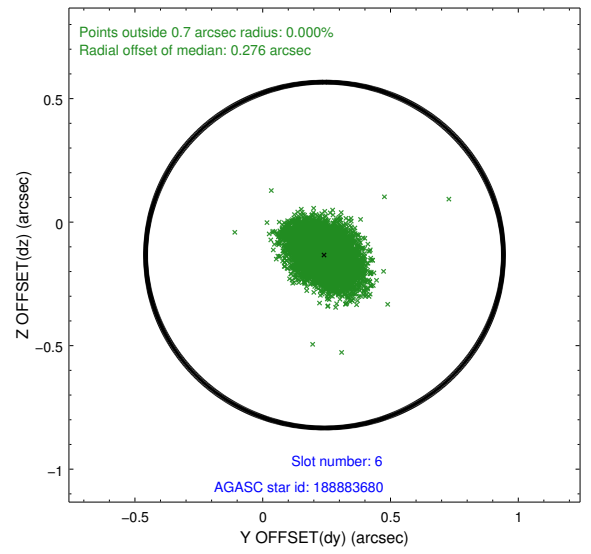
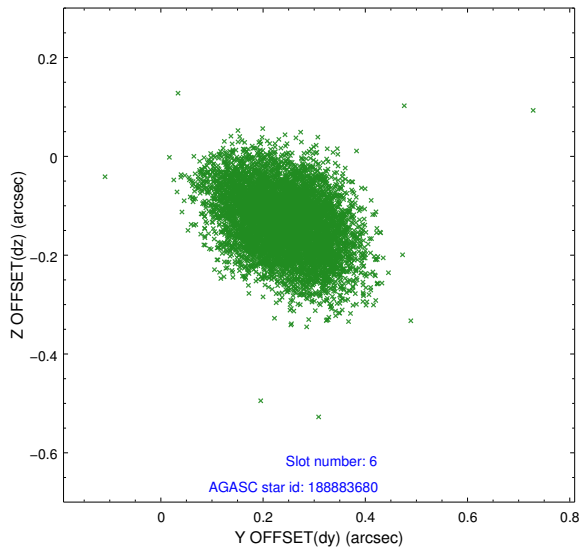
2.4.3 Slot 5



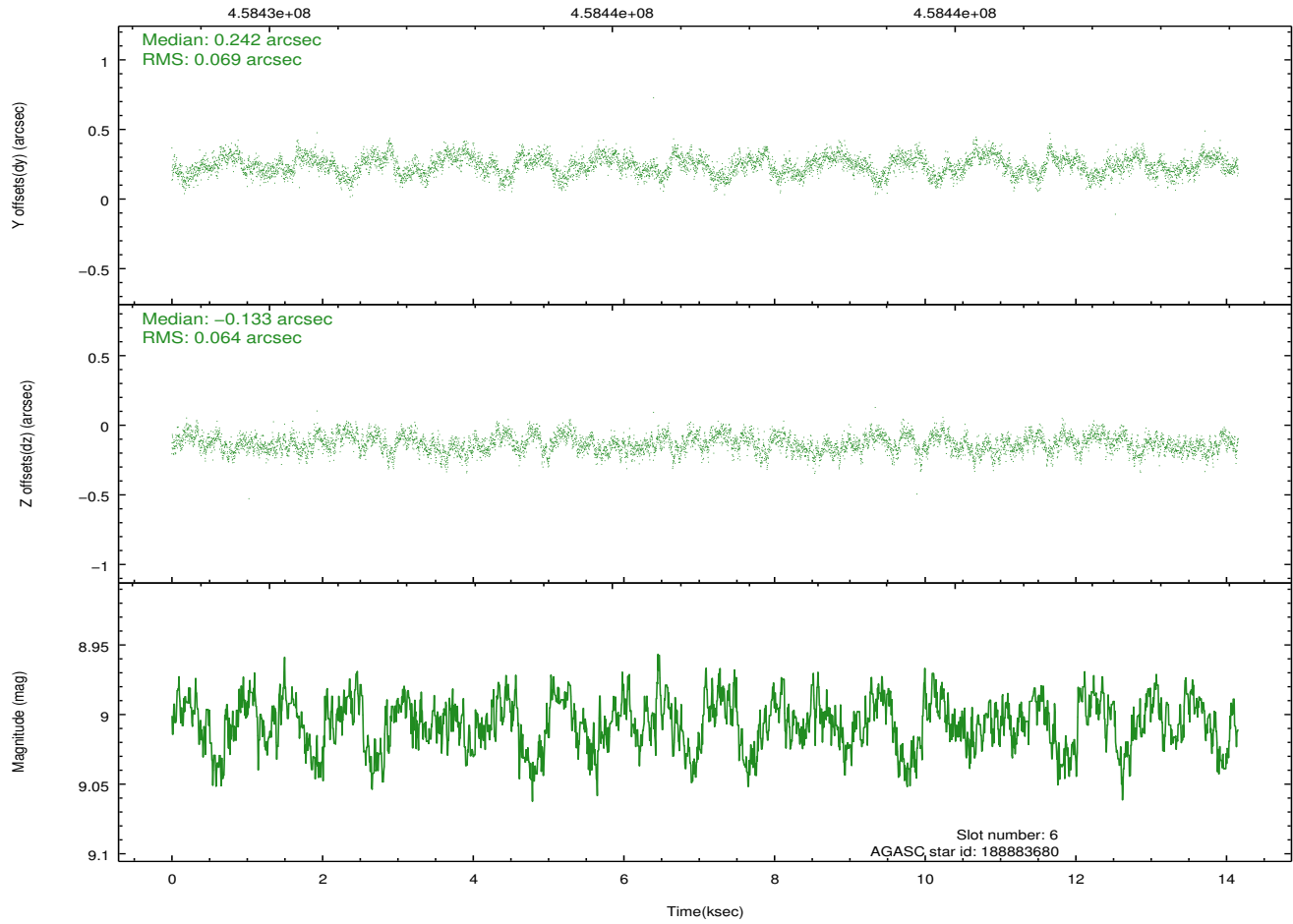
Time (s)



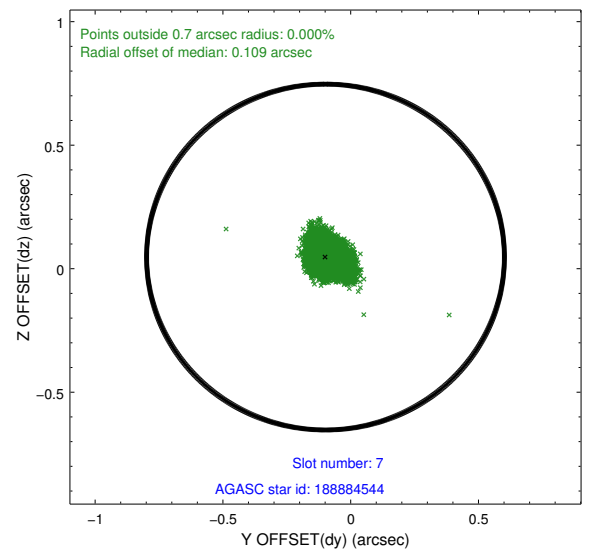
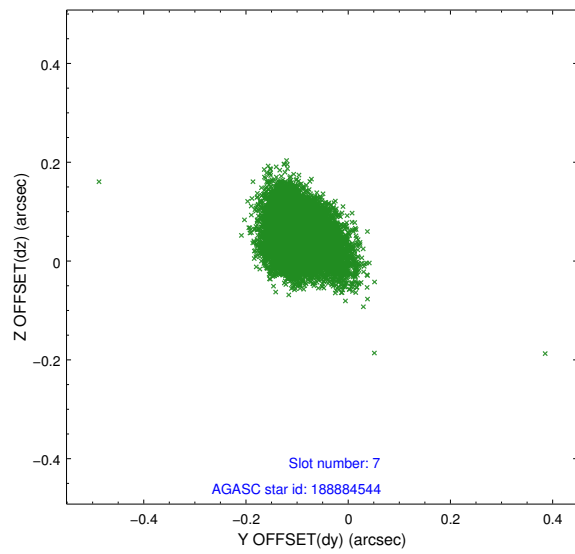
2.4.4 Slot 6



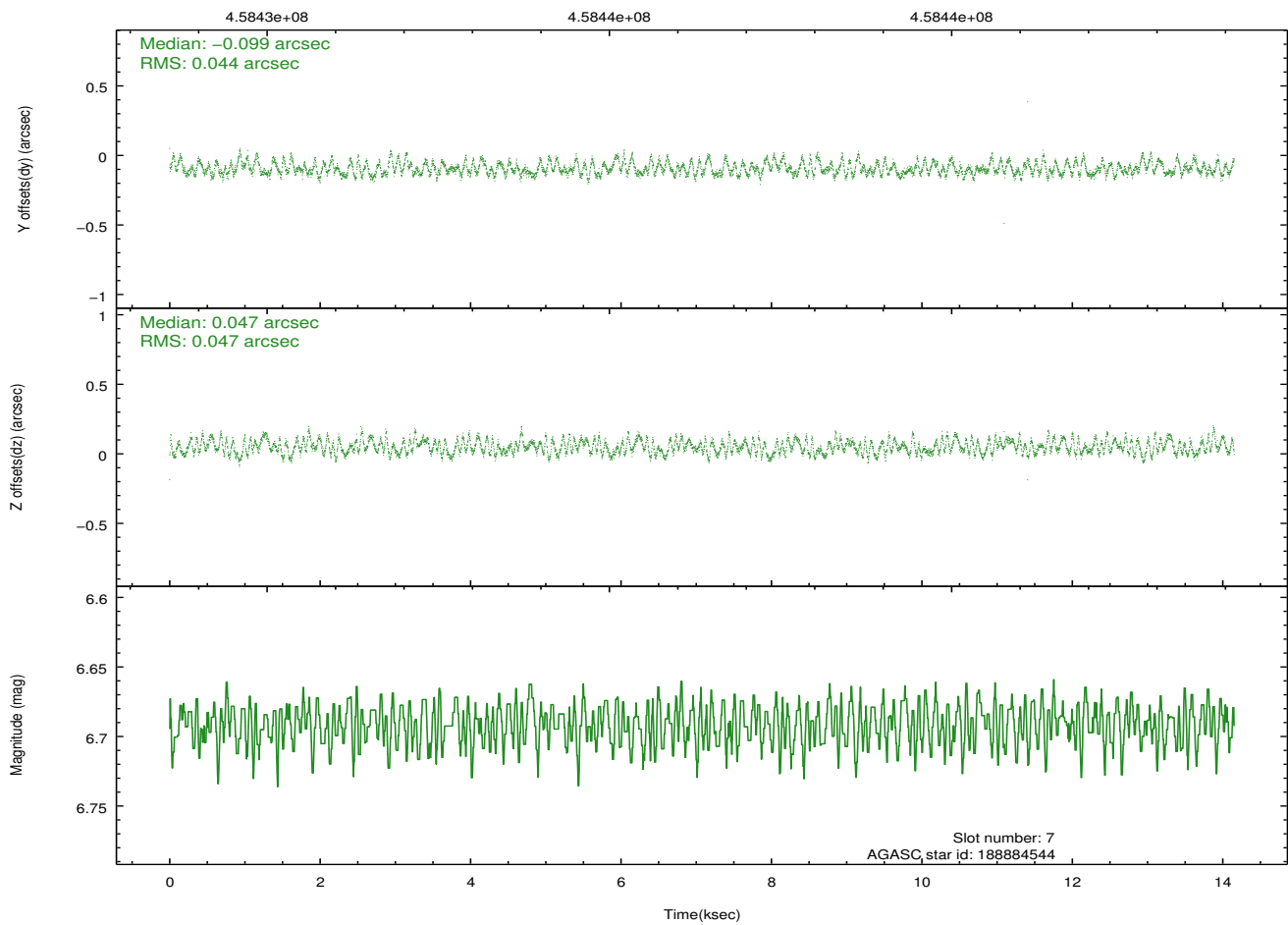
Time (s)



2.4.5 Slot 7

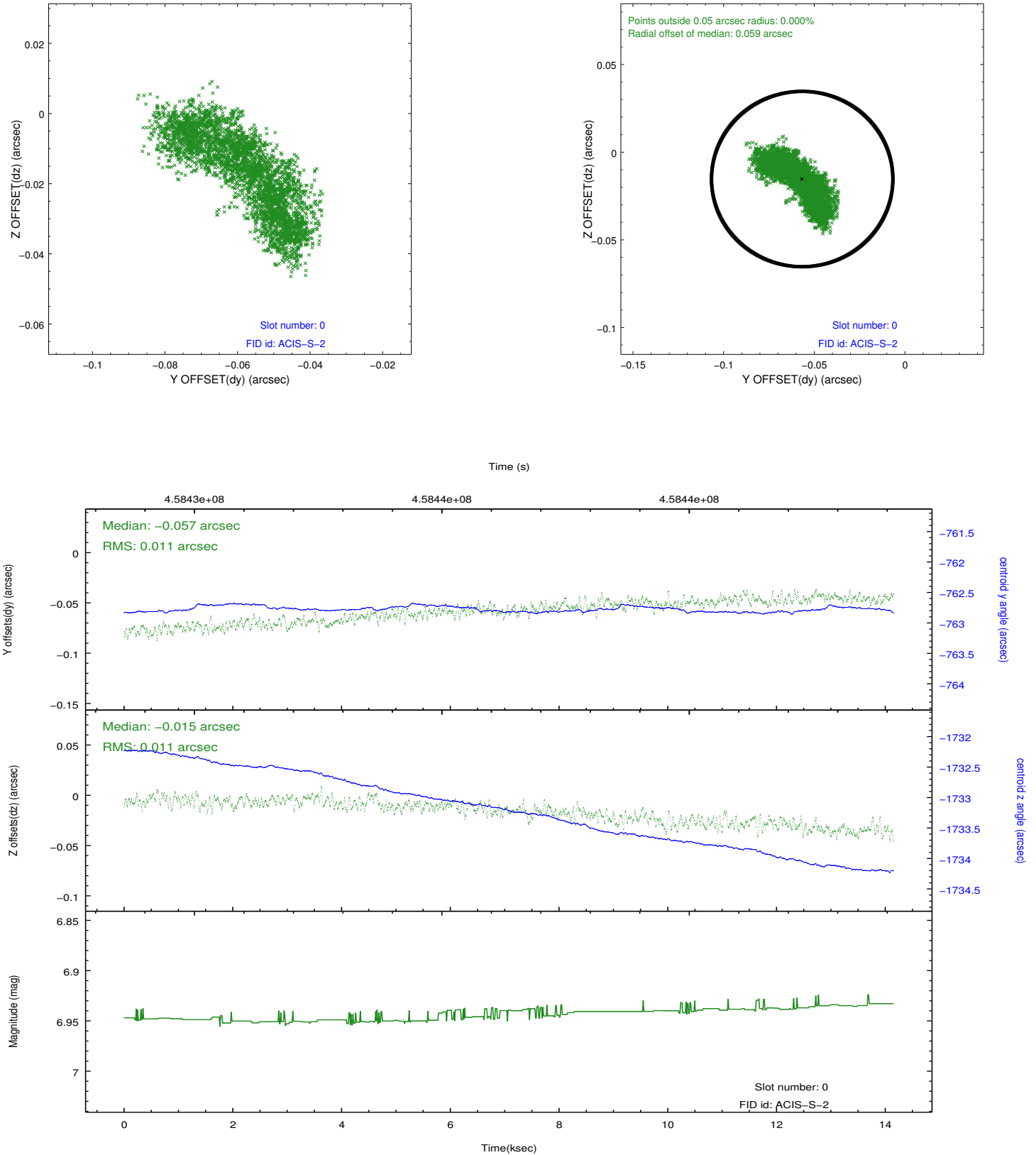


Time (s)

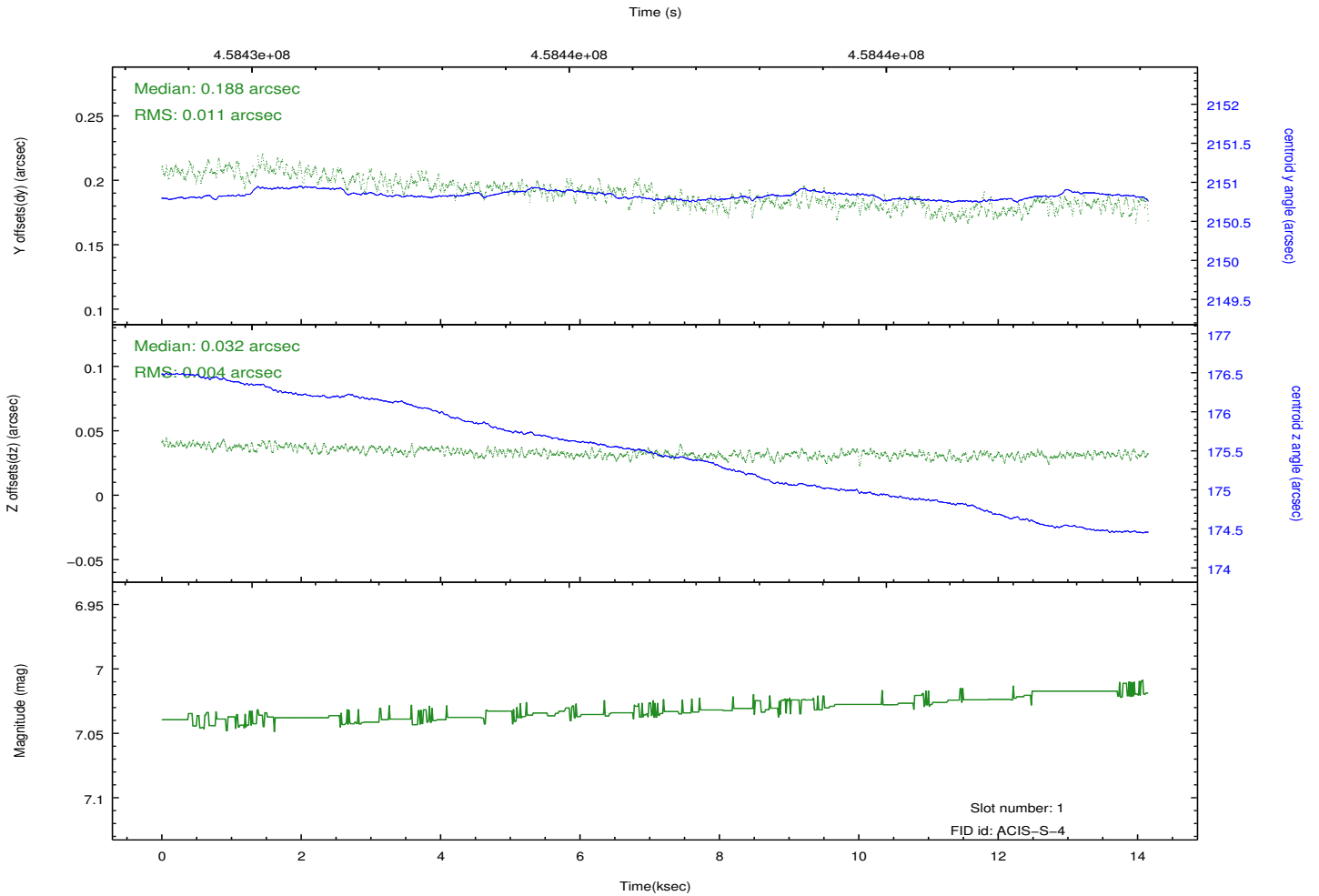
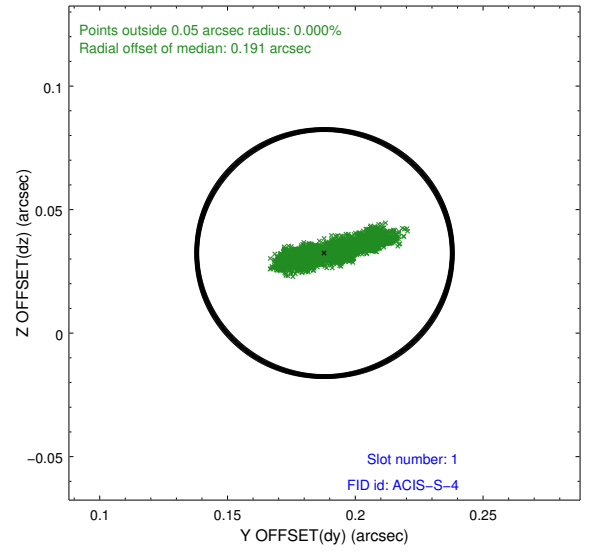
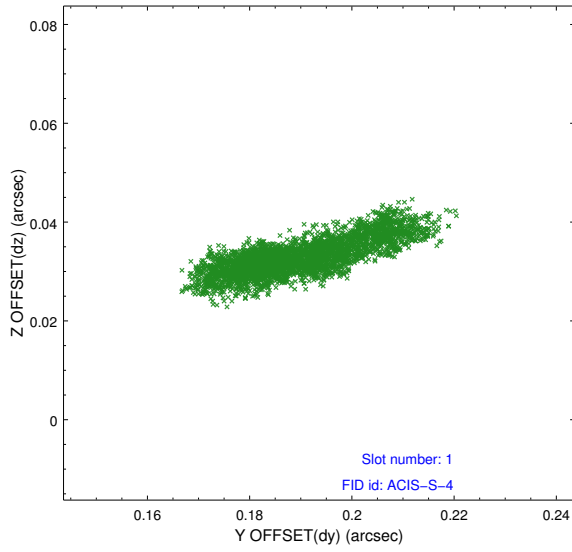


2.5 FID Slots

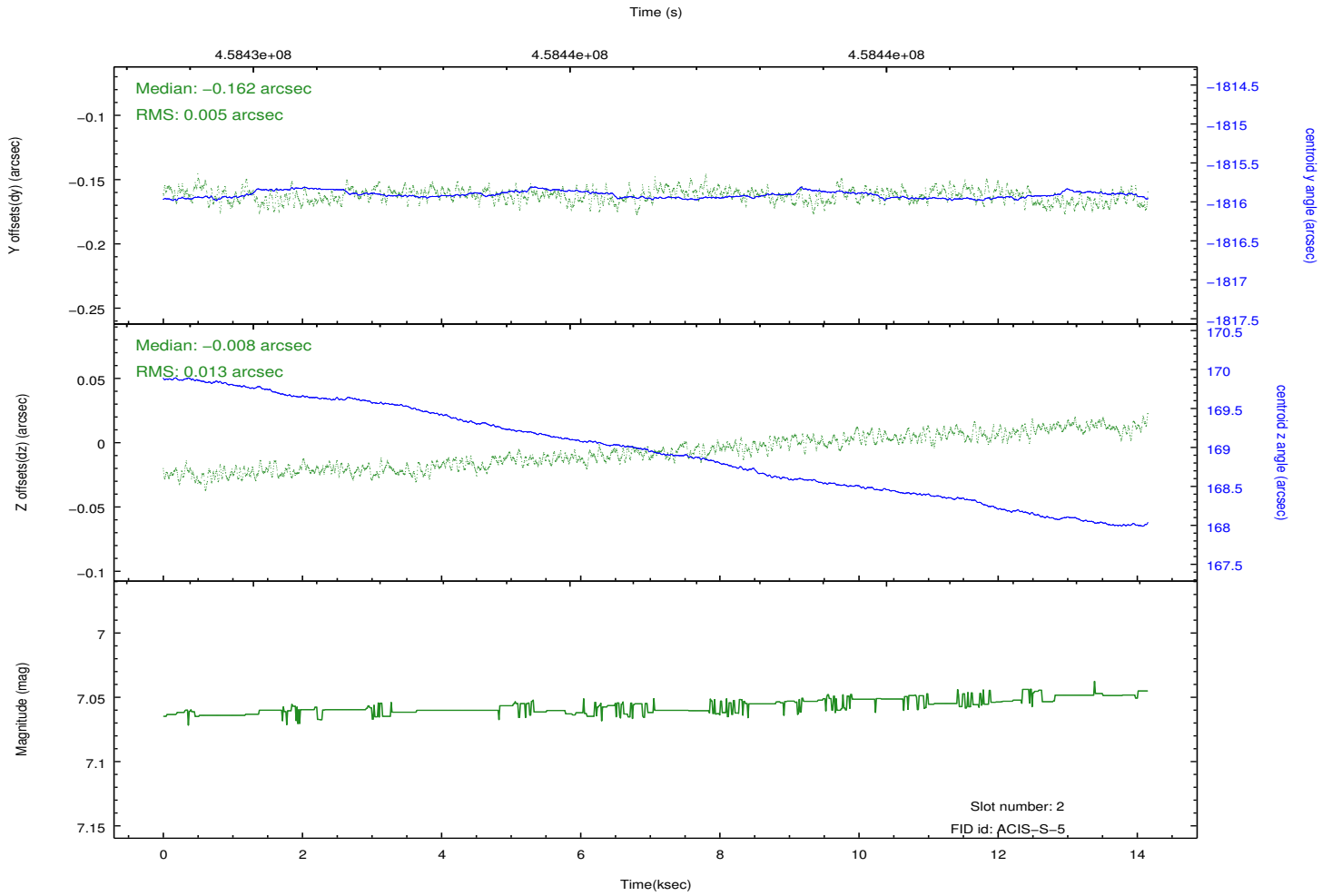
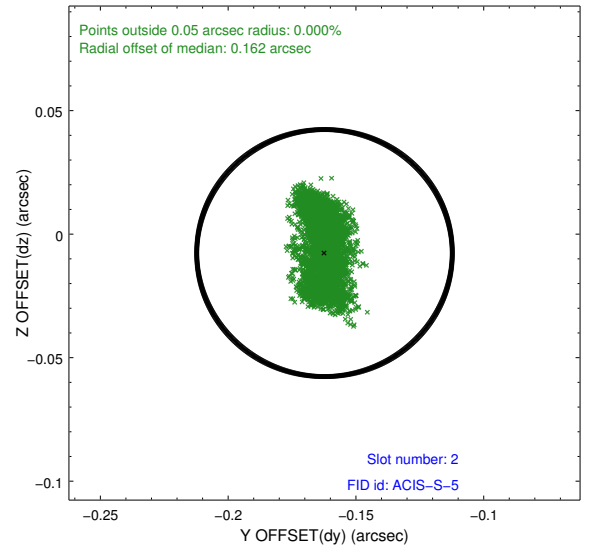
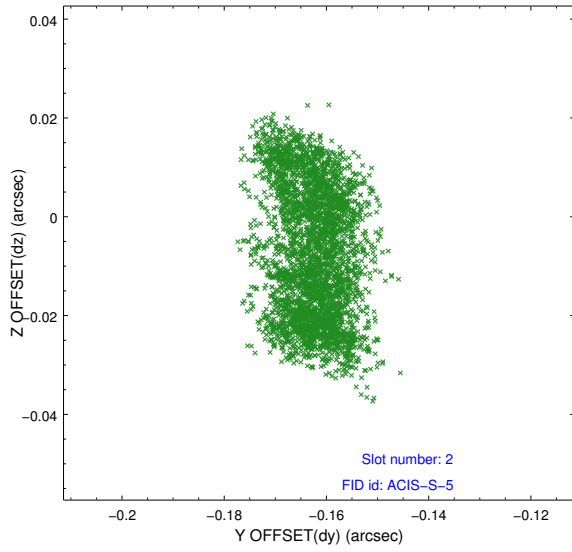
2.5.1 Slot 0



2.5.2 Slot 1



2.5.3 Slot 2



A Summary

A.1 Status

V&V Scientist	Beth Sundheim
V&V Date (YYYY-MM-DD)	2012.07.12
V&V Edition	1
V&V Disposition and Status	OK
V&V Charge Time	14.073306898713

A.2 Comments