

V&V Reference Report

L2 ASCDS Version : 8.1.1

Observation 1405 - L2 Version 4
Chandra X-Ray Center

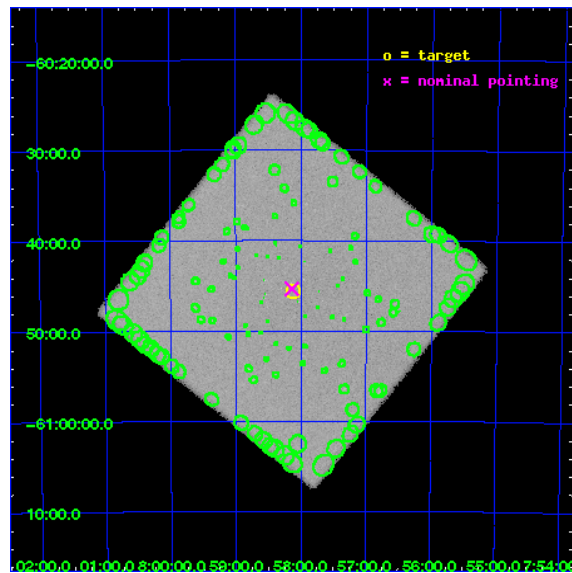
L2 Processing Date : Nov 20 2009

Contents

1	Front	2
2	OBI	3
2.1	OBI	3
2.1.1	Images	3
2.1.2	Parameters	4
2.1.3	Events	4
2.2	Compared Parameters	5
2.3	Aspect	6
2.4	Star Slots	9
2.4.1	Slot 3	9
2.4.2	Slot 4	10
2.4.3	Slot 5	11
2.4.4	Slot 6	12
2.4.5	Slot 7	13
2.5	FID Slots	14
2.5.1	Slot 0	14
2.5.2	Slot 1	15
2.5.3	Slot 2	16
3	Point Sources	17
A	Summary	18
A.1	Status	18
A.2	Comments	18

1 Front

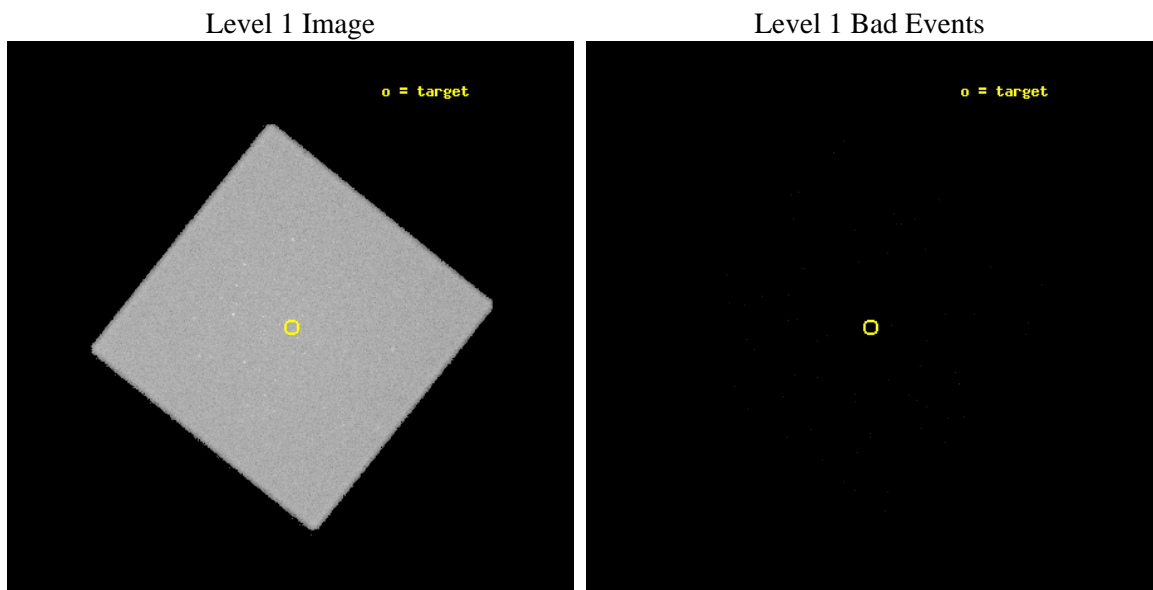
seq_num	280355	Sequence number
obs_id	1405	Observation id
title	CALIBRATION OBSERVATION NGC 2516 FOR BORESIGHTING AND PLATE SCALE	
observer	Dr. CXC Calibration	Principal investigator
object	NGC 2516	Source name
ra_targ	119.529583	Observer's specified target RA
dec_targ	-60.76	Observer's specified target Dec
ra_nom	119.5345005232	Nominal RA
dec_nom	-60.755790696257	Nominal Dec
roll_nom	83.721822933127	Nominal Roll
revision	4	Processing version of data
ontime	20270.656981029	[s]
livetime	20137.976782577	Ontime multiplied by DTCOR
l2events	667110	Number of level 2 events



2 OBI

2.1 OBI

2.1.1 Images



2.1.2 Parameters

obi_num	0	Obi number	sched_exp_time	20000.000000	Scheduled observation exposure time
ascdsver	8.1.1	Processing system revision	ontime	20270.656981029	[s]
caldbver	4.1.4	 	ll events	1013169	Number of level 1 events
date	2009-11-20T15:04:21	Date and time of file creation			
revision	4	Processing version of data			

2.1.3 Events

Level 1 Events

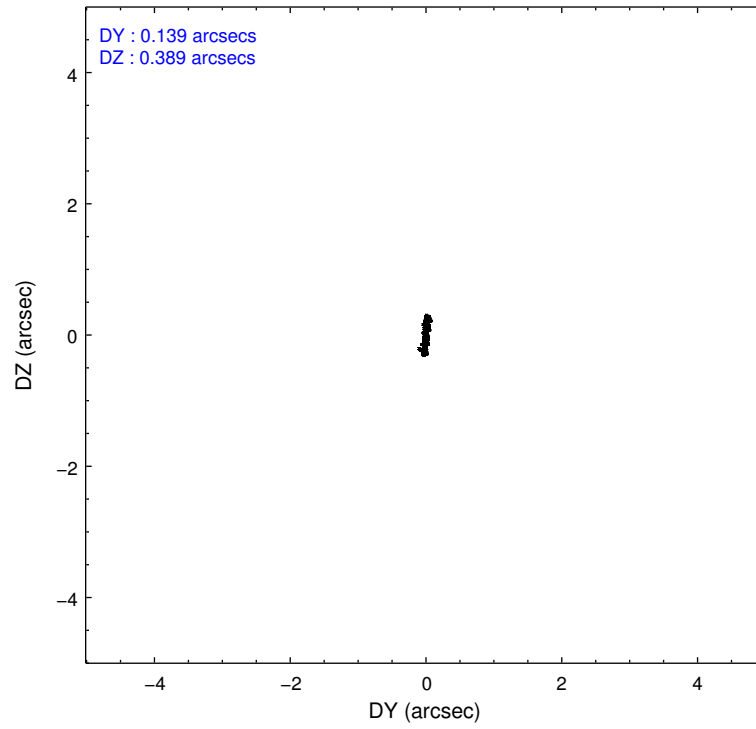
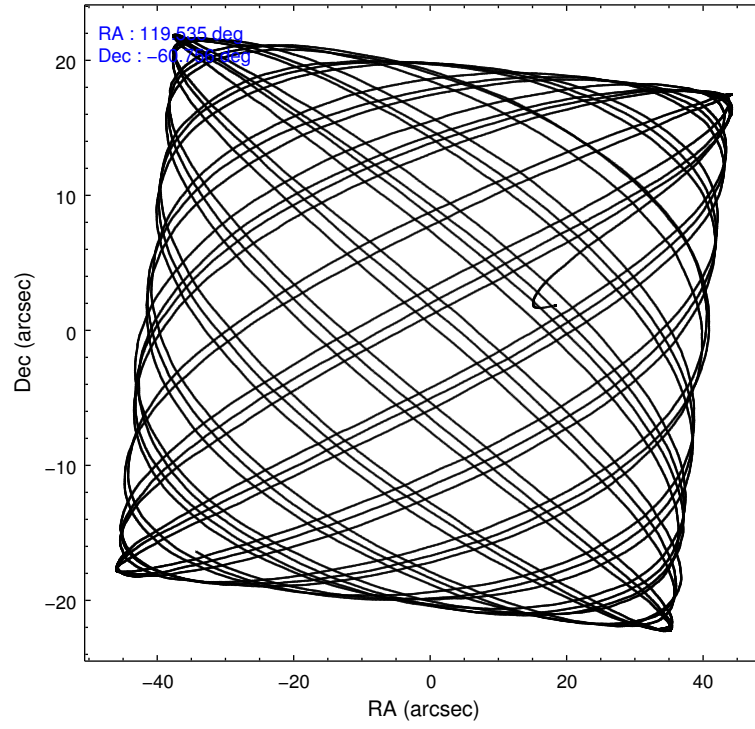
	segment 0
level 1 events	1013169
rejected events	2543
rejected %	0%

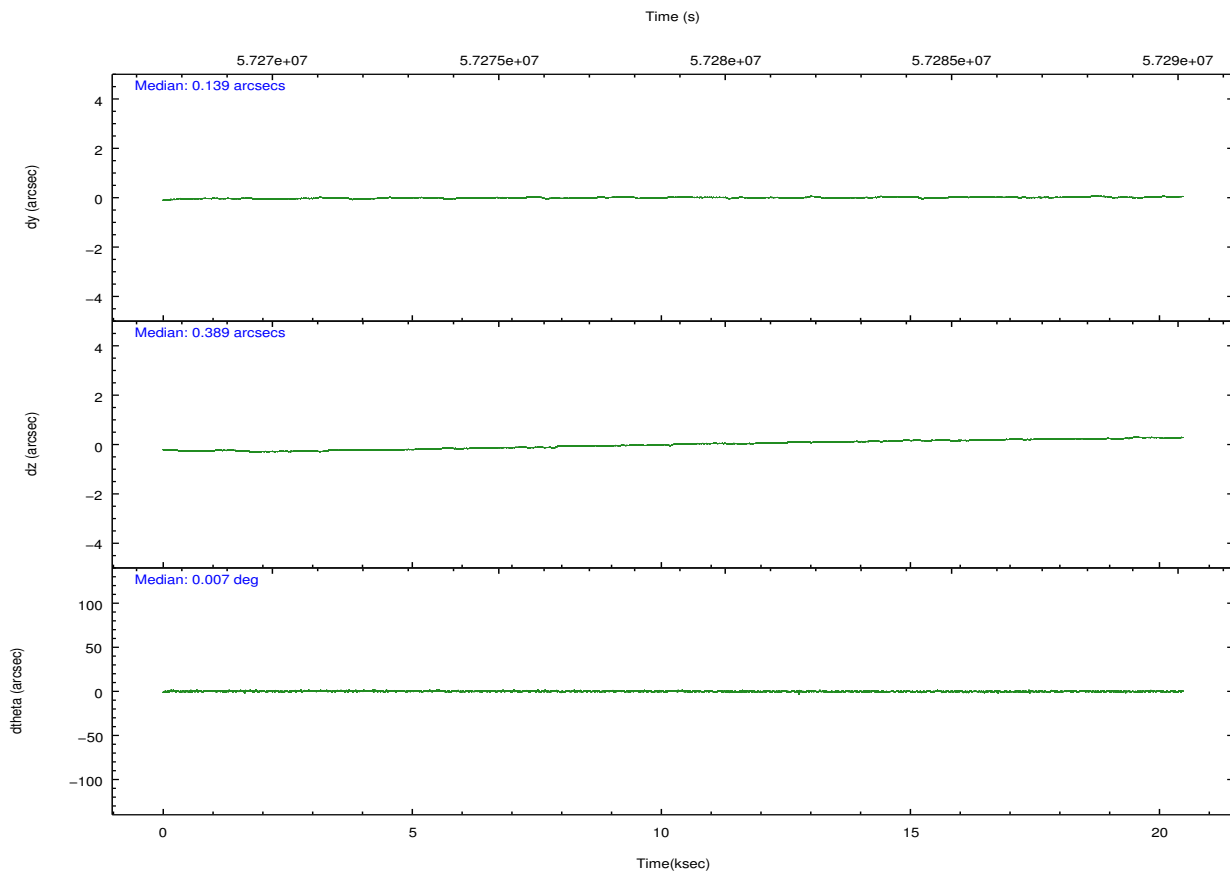
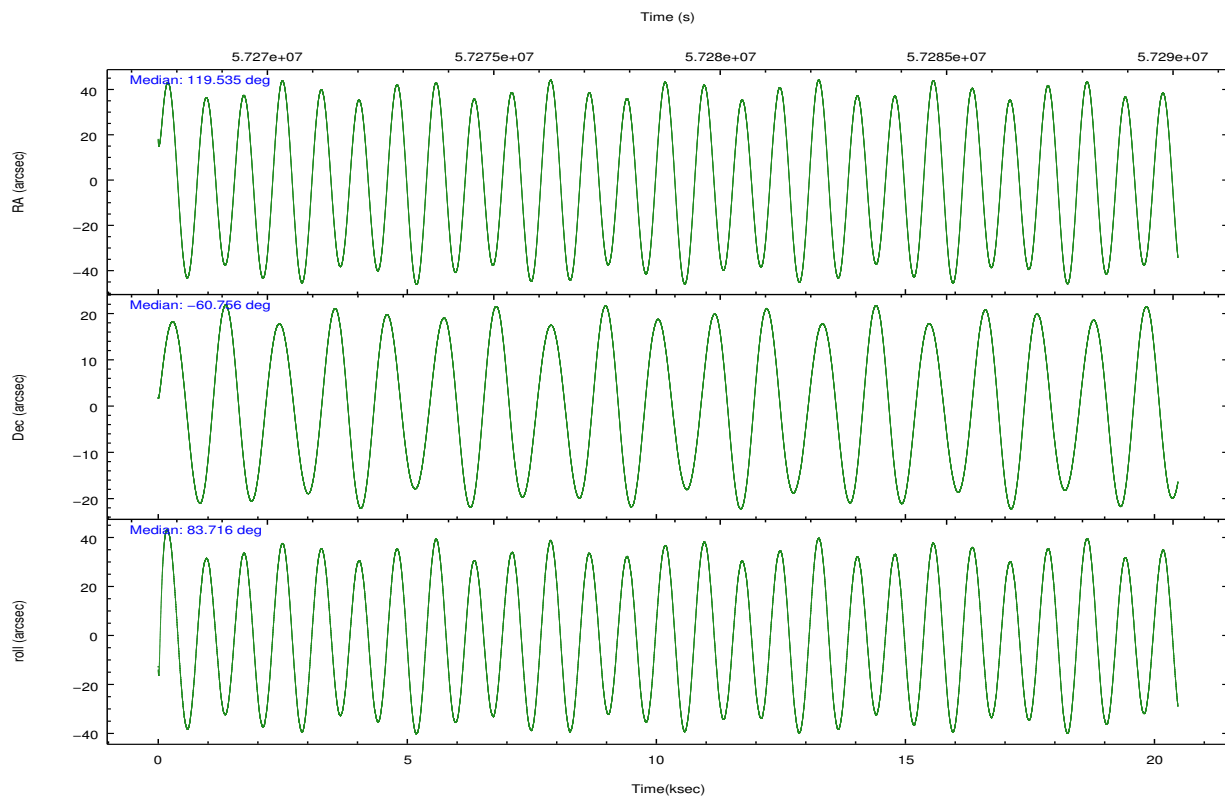
2.2 Compared Parameters

Parameter	Planned	Actual
Instrument	HRC	HRC
Detector	HRC-I	HRC-I
Grating	NONE	NONE
Data mode	OBSERVING	OBSERVING
Observation mode	POINTING	POINTING
Pointing RA	119.557219	119.5345005231982
Pointing Dec	-60.780915	-60.75579069625711
Pointing Roll	83.837159	83.72182293312727
SIM focus pos (mm)	-1.040293	-1.038866356238299
SIM defocus (mm)	0	0.001426264420575141
SIM translation stage pos (mm)	126.985494	126.9854943052878
SIM translation stage offset (mm)	0	-5.413686238853188e-06
Observation start time	57269084.184000	57267960.825519
Observation start date	1999-10-25T20:03:40	1999-10-25T19:46:00
Observation end time	57289084.184000	57289512.476296
Observation end date	1999-10-26T01:37:00	1999-10-26T01:45:12

Parameter	Planned	Actual
Obspar format version number	6	6
Obspar file type	PREDICTED	ACTUAL
Obspar update status	NONE	UPDATED

2.3 Aspect



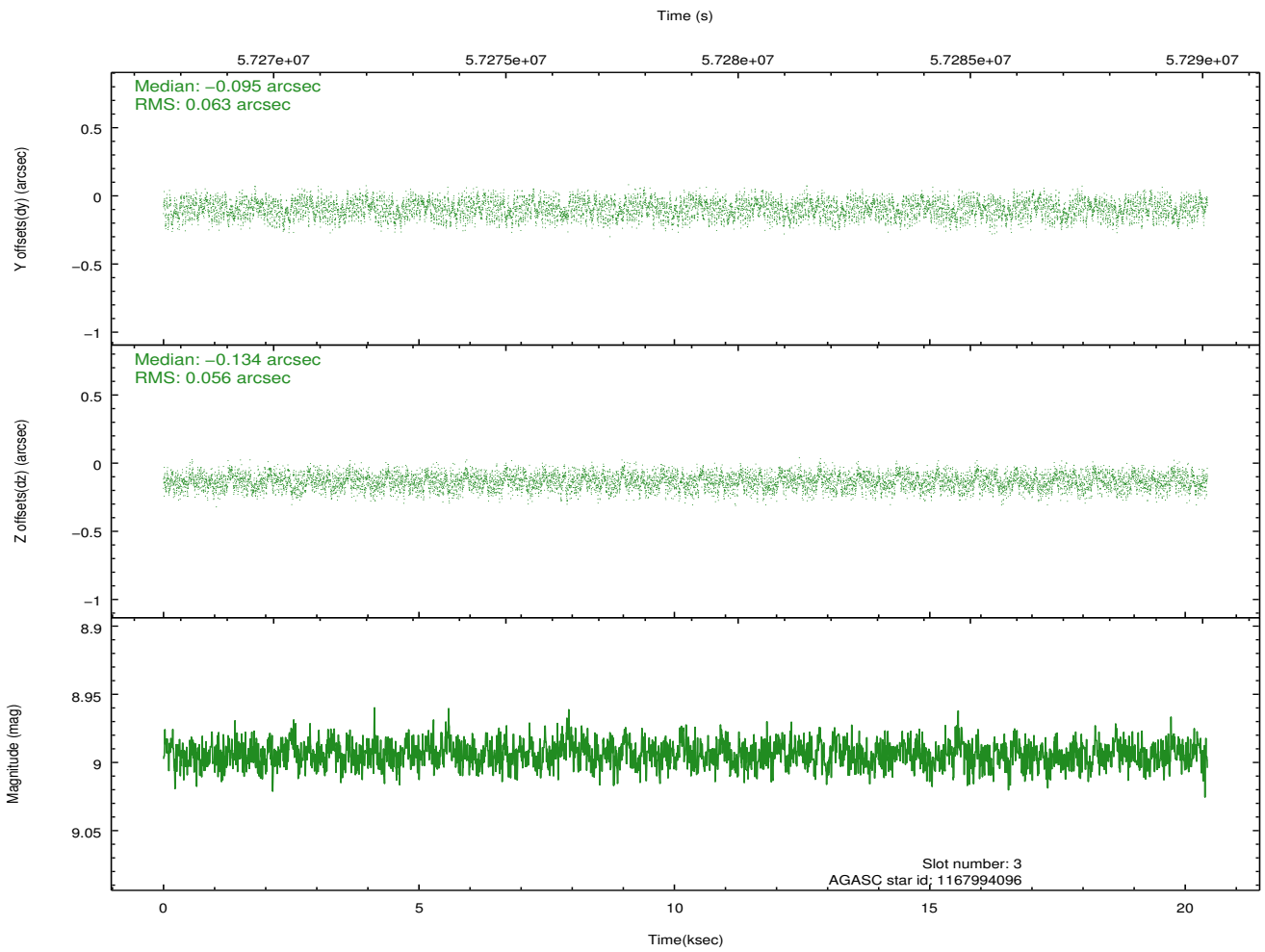
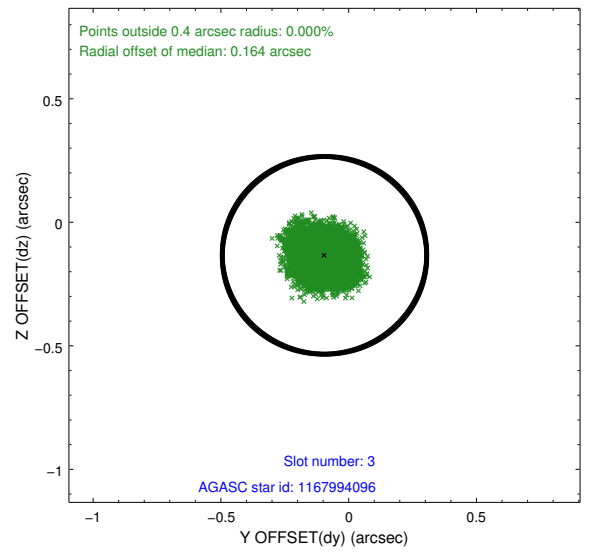
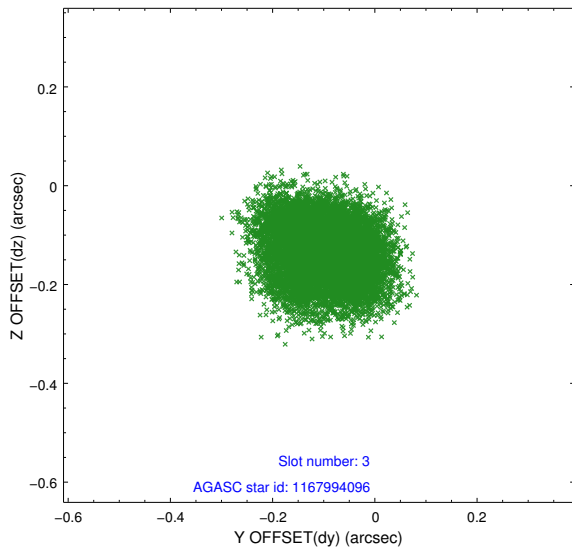


Slot Statistics

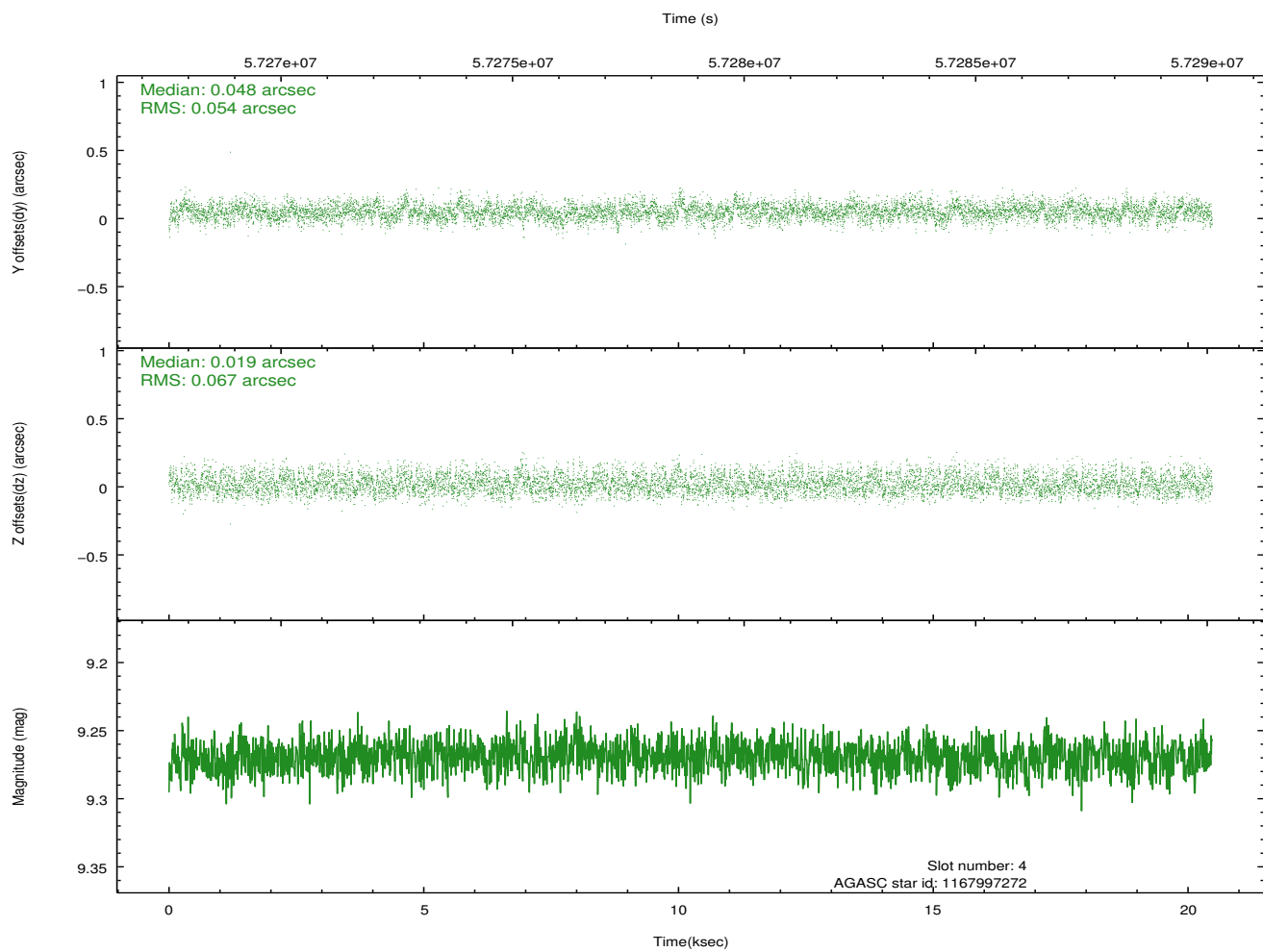
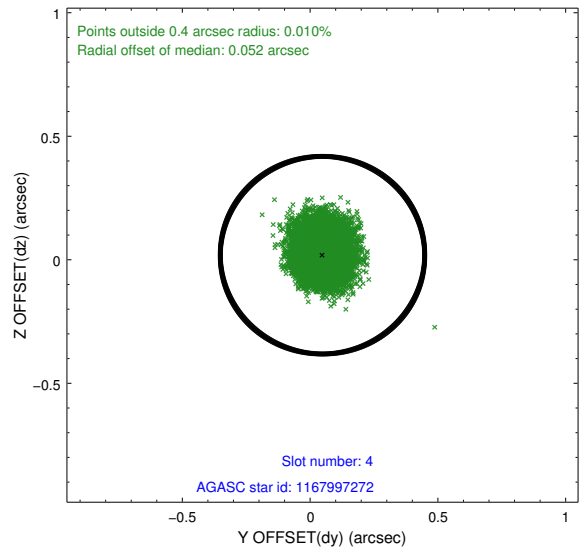
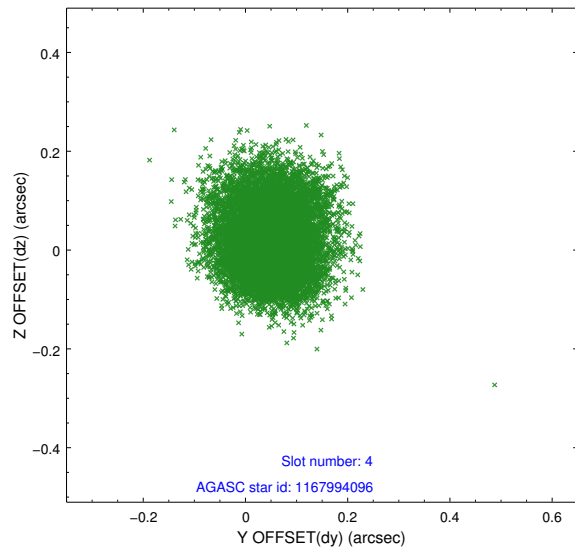
slot	status	id	mag	n_pts	med_dy	med_dz	dr1	dr2	ra	dec	mean_y	mean_z
0	FID	HRC-I-1	6.97	9987	0.003	-0.025	0.008	0.015	0.000000	0.000000	-755.49	-1288.14
1	FID	HRC-I-3	7.05	9988	0.056	-0.065	0.008	0.013	0.000000	0.000000	-1184.08	1016.24
2	FID	HRC-I-4	6.99	9988	0.055	0.001	0.006	0.010	0.000000	0.000000	1287.16	1014.23
3	GUIDE	1167994096	8.99	9962	-0.095	-0.134	0.092	0.139	118.437093	-60.572614	515.62	2049.06
4	GUIDE	1167997272	9.27	9984	0.048	0.019	0.092	0.147	118.927163	-61.353075	-2169.98	860.24
5	GUIDE	1169697264	9.37	9953	-0.041	0.068	0.109	0.172	120.873786	-60.525310	1141.82	-2221.17
6	GUIDE	1169687528	9.74	9983	-0.013	0.040	0.129	0.197	120.380768	-60.231189	2116.53	-1251.26
7	GUIDE	1167999256	9.75	9980	0.099	0.007	0.106	0.172	119.094504	-61.283933	-1889.07	601.50

2.4 Star Slots

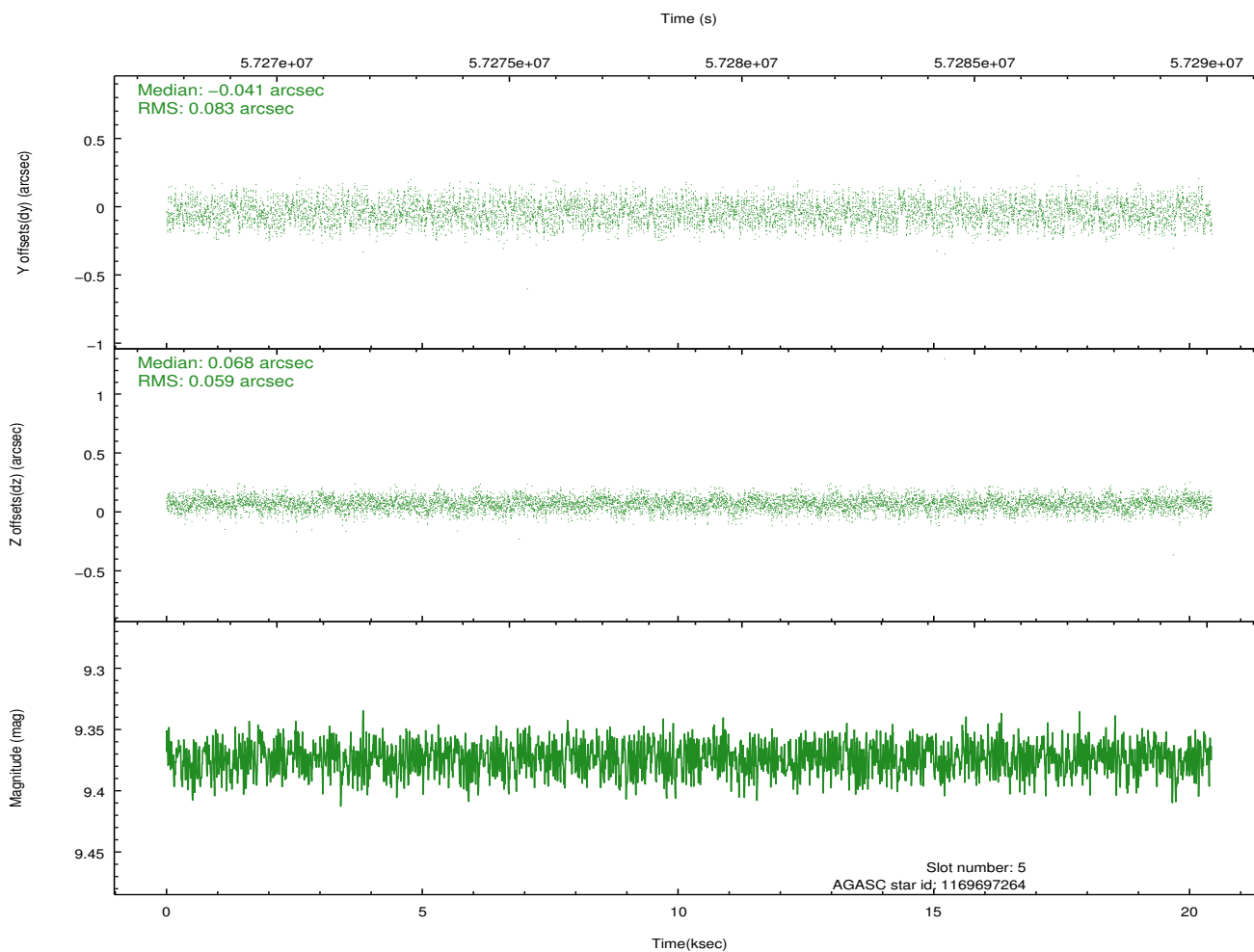
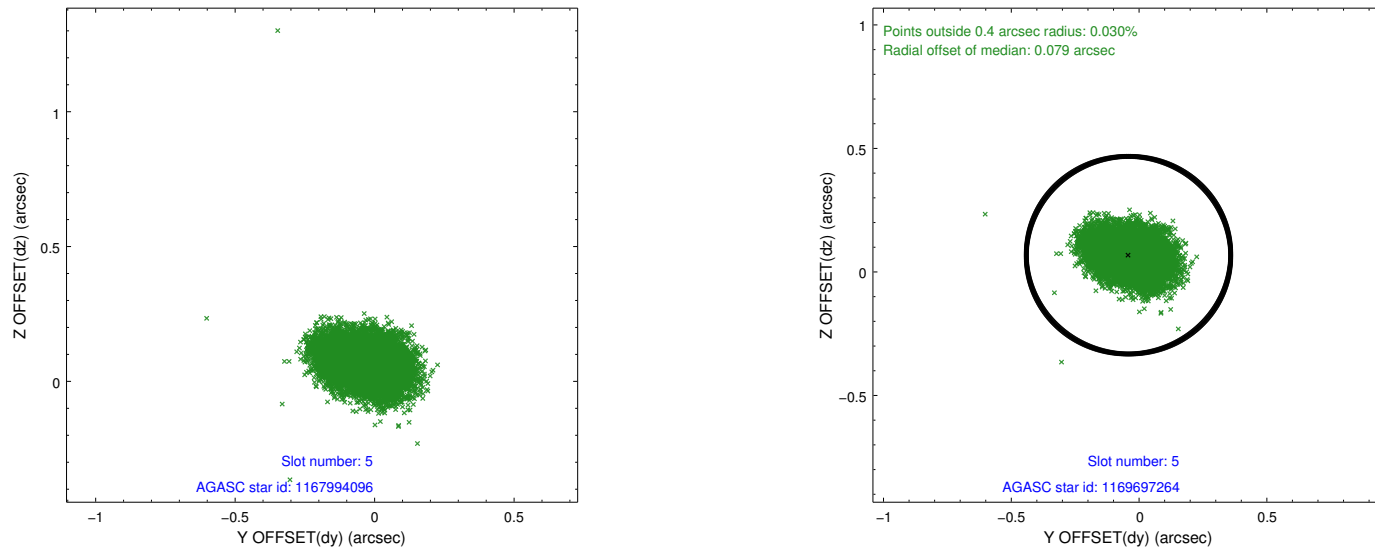
2.4.1 Slot 3



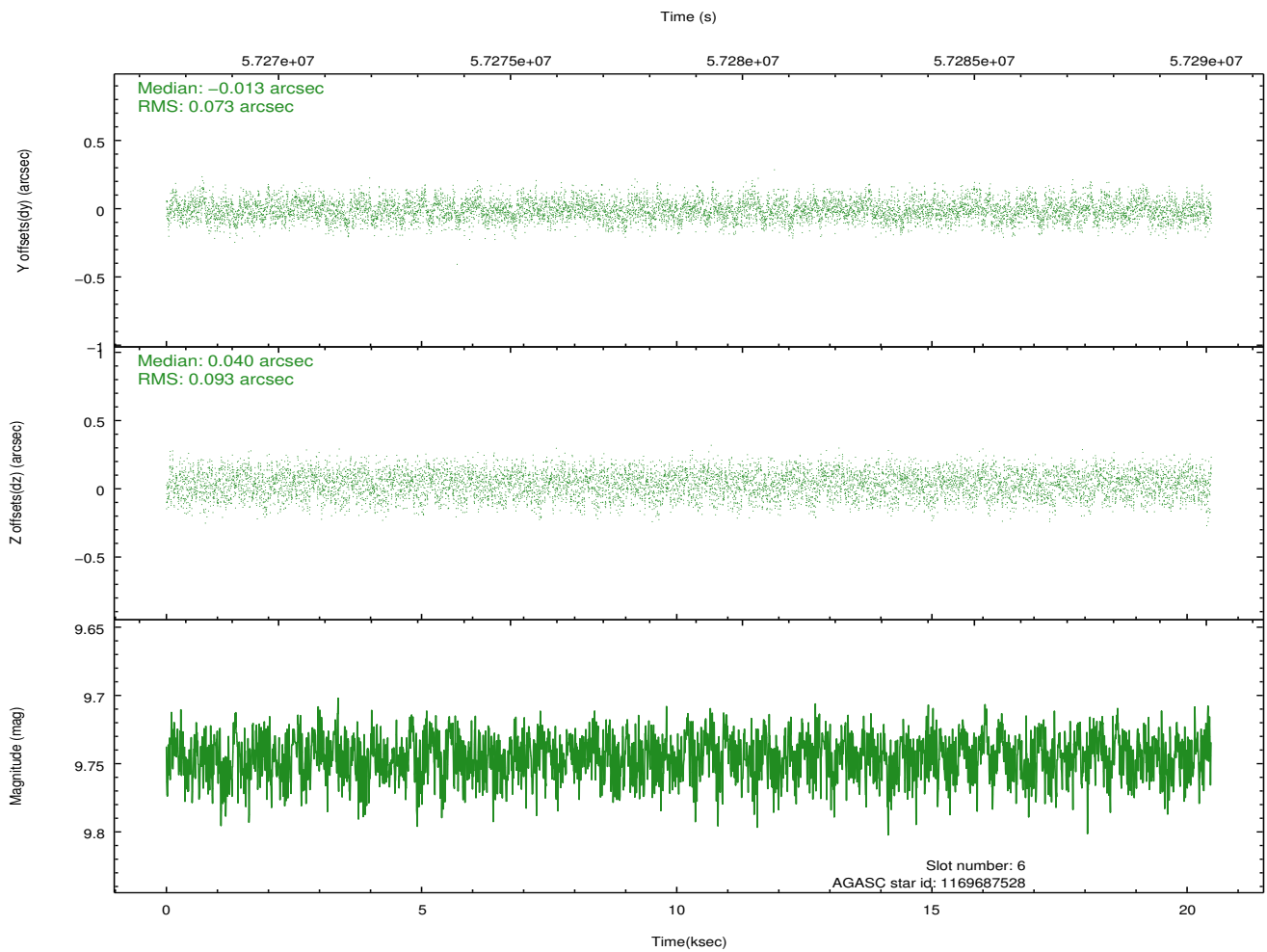
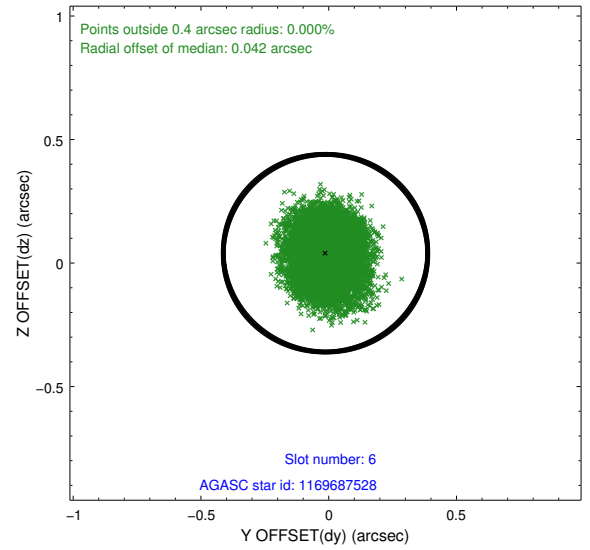
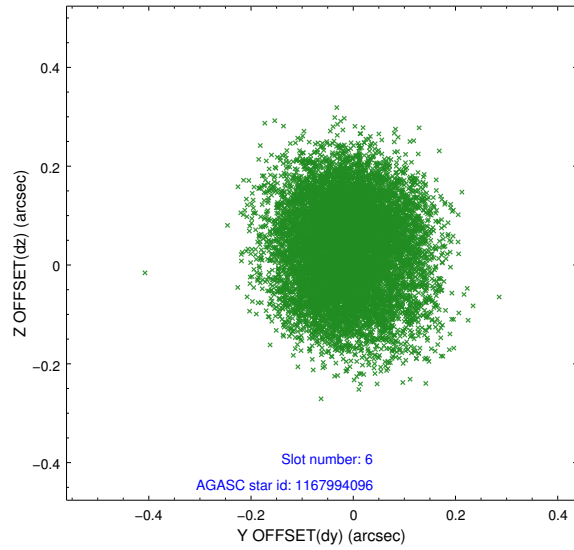
2.4.2 Slot 4



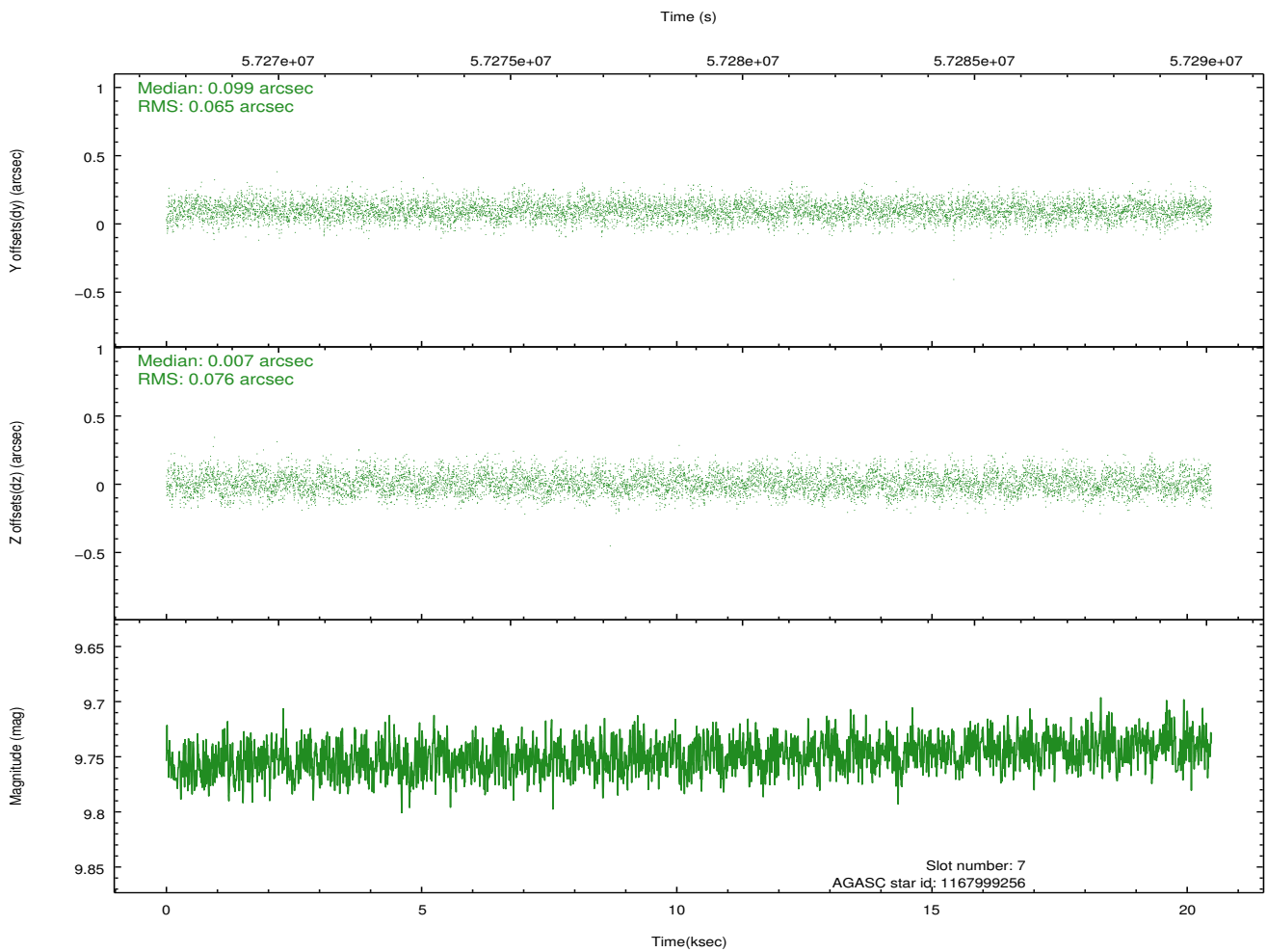
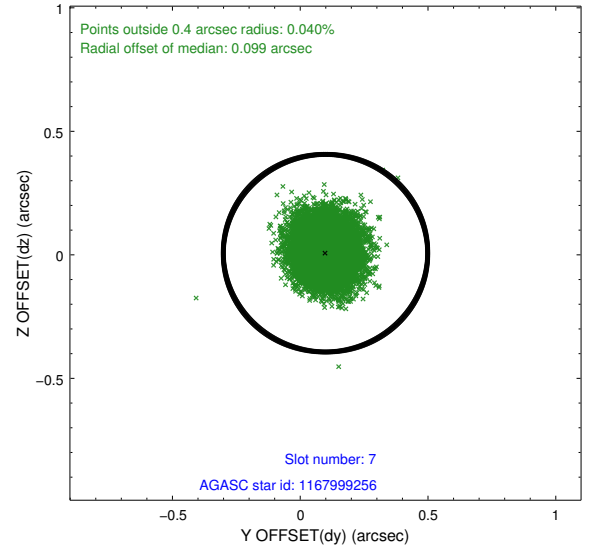
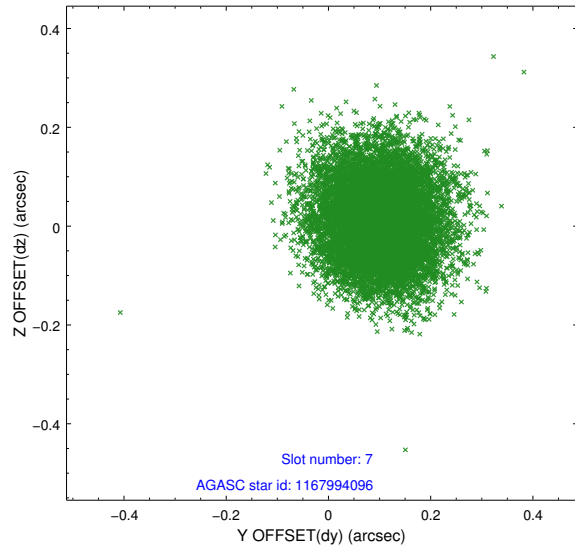
2.4.3 Slot 5



2.4.4 Slot 6

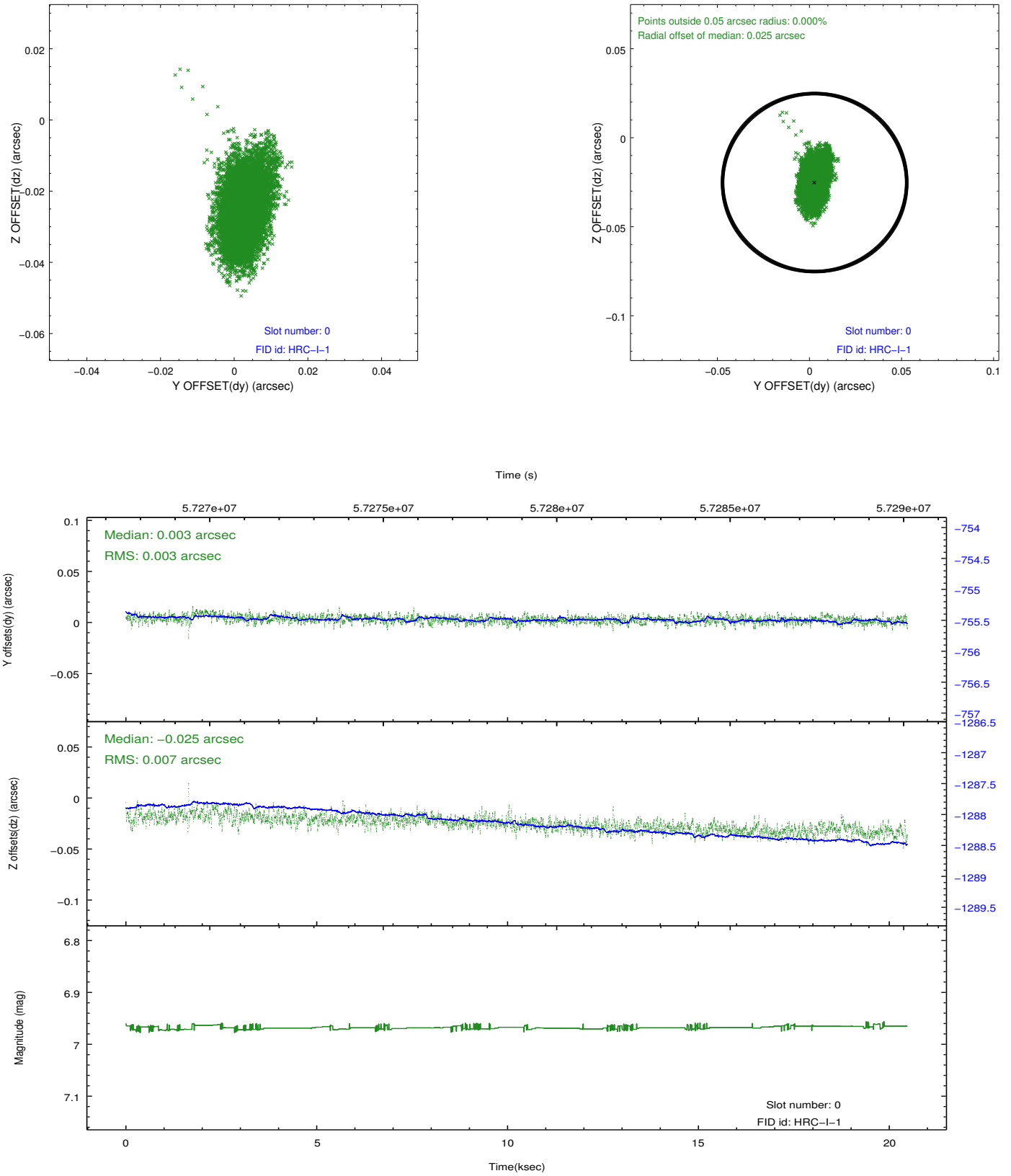


2.4.5 Slot 7

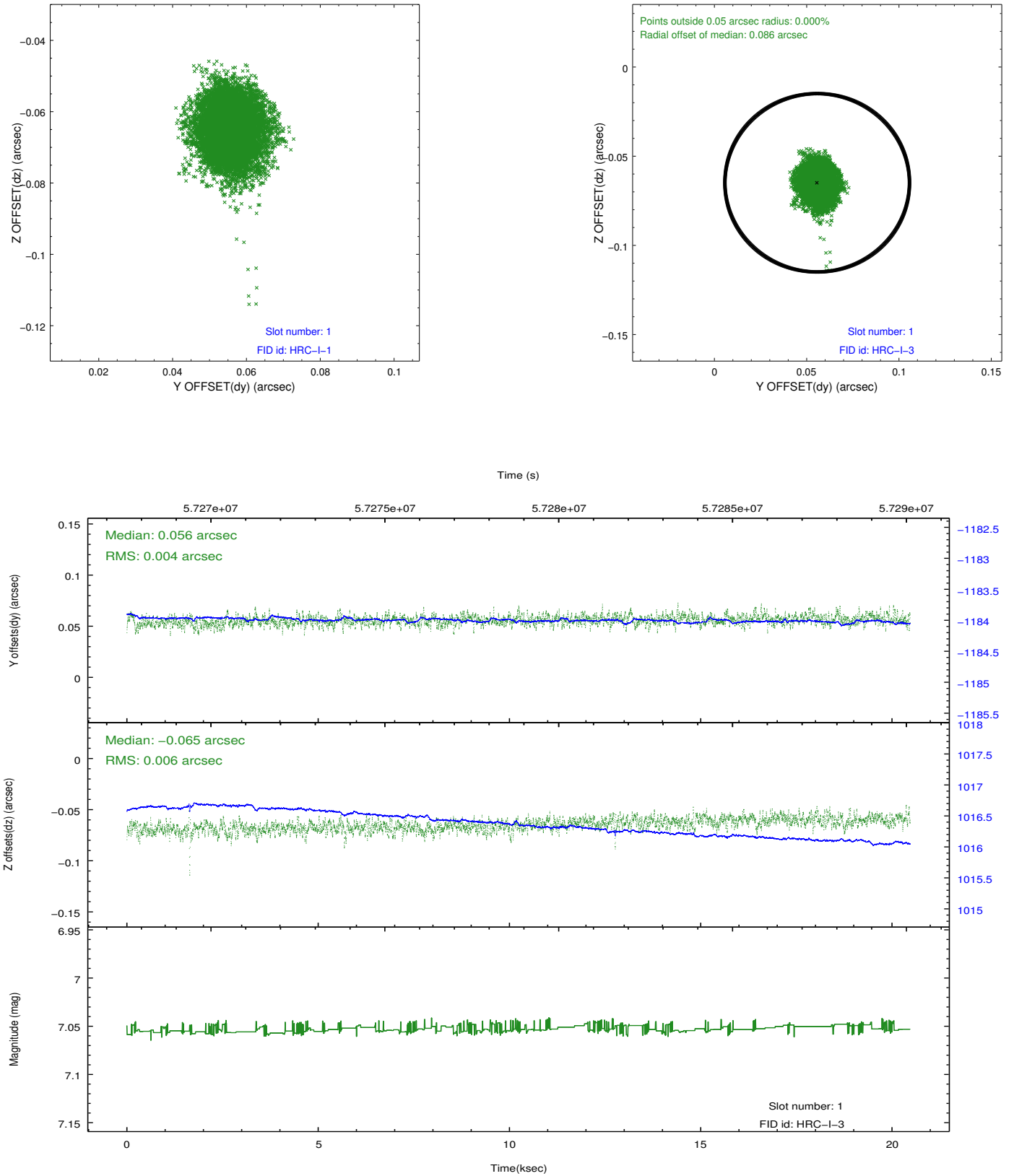


2.5 FID Slots

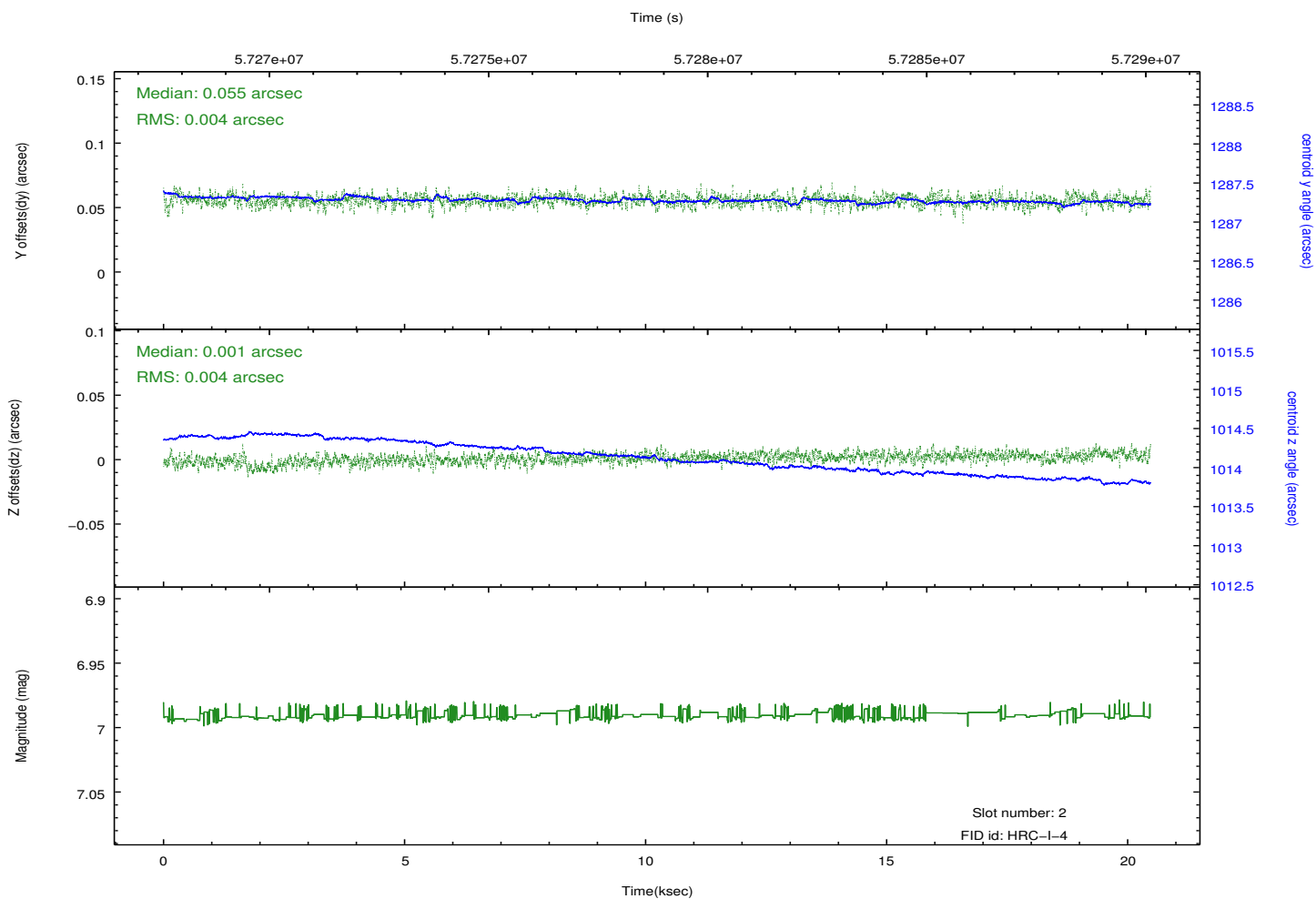
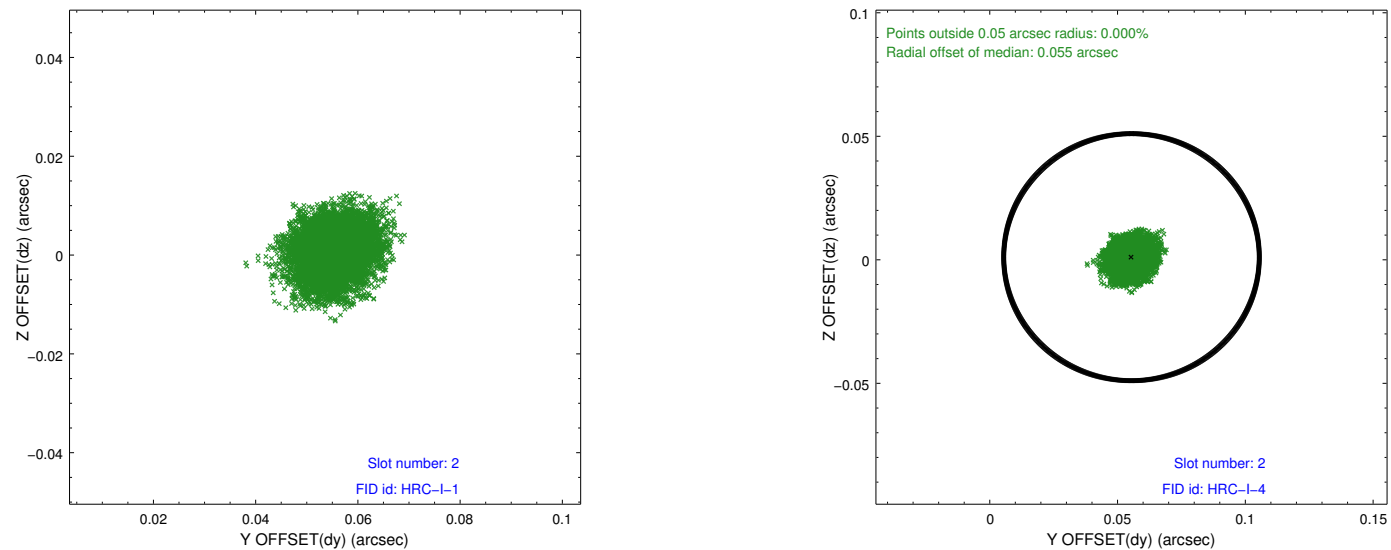
2.5.1 Slot 0



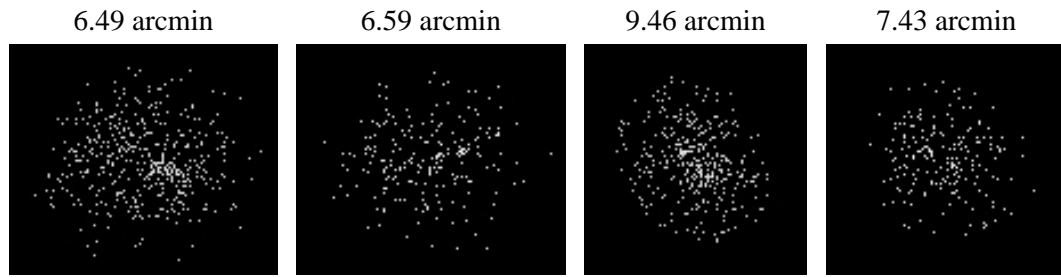
2.5.2 Slot 1



2.5.3 Slot 2



3 Point Sources



A Summary

A.1 Status

V&V Scientist	Beth Sundheim
V&V Date (YYYY-MM-DD)	2009.11.23
V&V Edition	1
V&V Disposition and Status	OK
V&V Charge Time	20.264

A.2 Comments