

V&V Reference Report

L2 ASCDS Version : 8.4.5

Observation 14195 - L2 Version 1
Chandra X-Ray Center

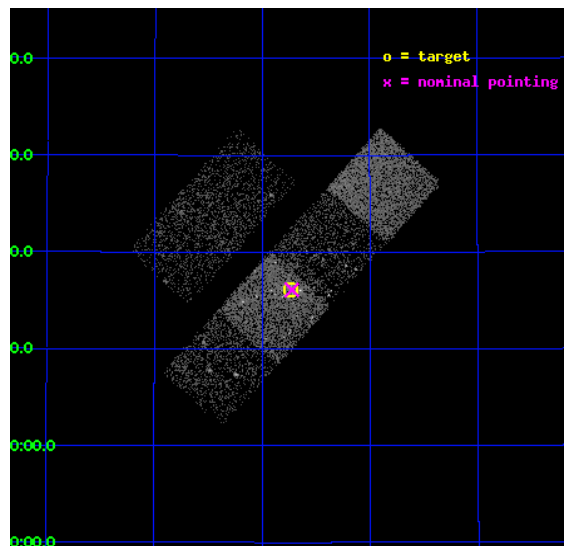
L2 Processing Date : Aug 15 2012

Contents

1	Front	2
2	OBI Primary	3
2.1	OBI	3
2.1.1	Images	3
2.1.2	Bias	3
2.1.3	Parameters	4
2.1.4	Events	4
2.2	Compared Parameters	5
2.3	Aspect	6
2.4	Star Slots	9
2.4.1	Slot 3	9
2.4.2	Slot 4	10
2.4.3	Slot 5	11
2.4.4	Slot 6	12
2.4.5	Slot 7	13
2.5	FID Slots	14
2.5.1	Slot 0	14
2.5.2	Slot 1	15
2.5.3	Slot 2	16
3	OBI Secondary	17
3.1	OBI	17
3.1.1	Images	17
3.1.2	Bias	17
3.1.3	Parameters	18
3.1.4	Events	18
A	Summary	19
A.1	Status	19
A.2	Comments	19

1 Front

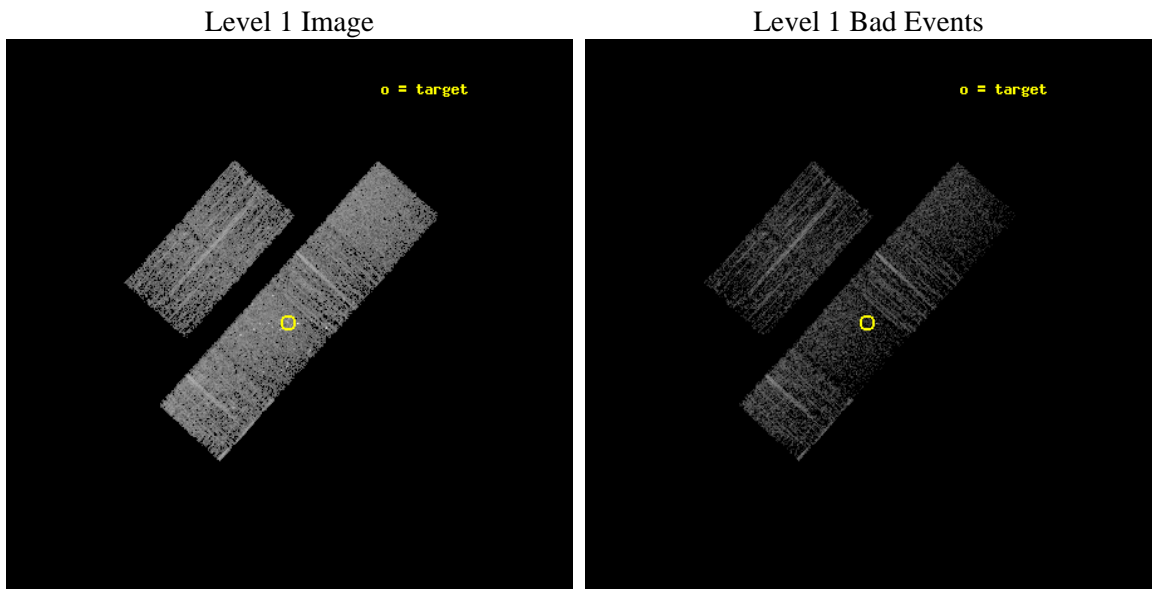
seq_num	601018	Sequence number
obs_id	14195	Observation id
title	M31*: A Resolved Low-Luminosity Accretion Flow Surrounding a Newly Active LLAGN (ACIS/GTO)	Proposal title
observer	Professor Gordon Garmire	Principal investigator
object	M31*	Source name
dtcycle	0	
cycle	P	events are from which exps? P[rimary] S[econdar]
ra_targ	10.685	Observer's specified target RA [deg]
dec_targ	41.268972	Observer's specified target Dec [deg]
ra_nom	10.68103495106	Nominal RA [deg]
dec_nom	41.268458528686	Nominal Dec [deg]
roll_nom	132.15924710324	Nominal Roll [deg]
revision	1	Processing version of data
ontime	6635.5212922692	Sum of GTIs [s]
livetime	1044.5911106171	Livetime [s]
ontime2	6635.5212922692	Sum of GTIs [s]
ontime3	6635.5212922692	Sum of GTIs [s]
ontime5	6635.5212922692	Sum of GTIs [s]
ontime6	6635.5212922692	Sum of GTIs [s]
ontime7	6635.5212922692	Sum of GTIs [s]
ontime8	6635.5212724209	Sum of GTIs [s]
l2events	20428	Number of level 2 events



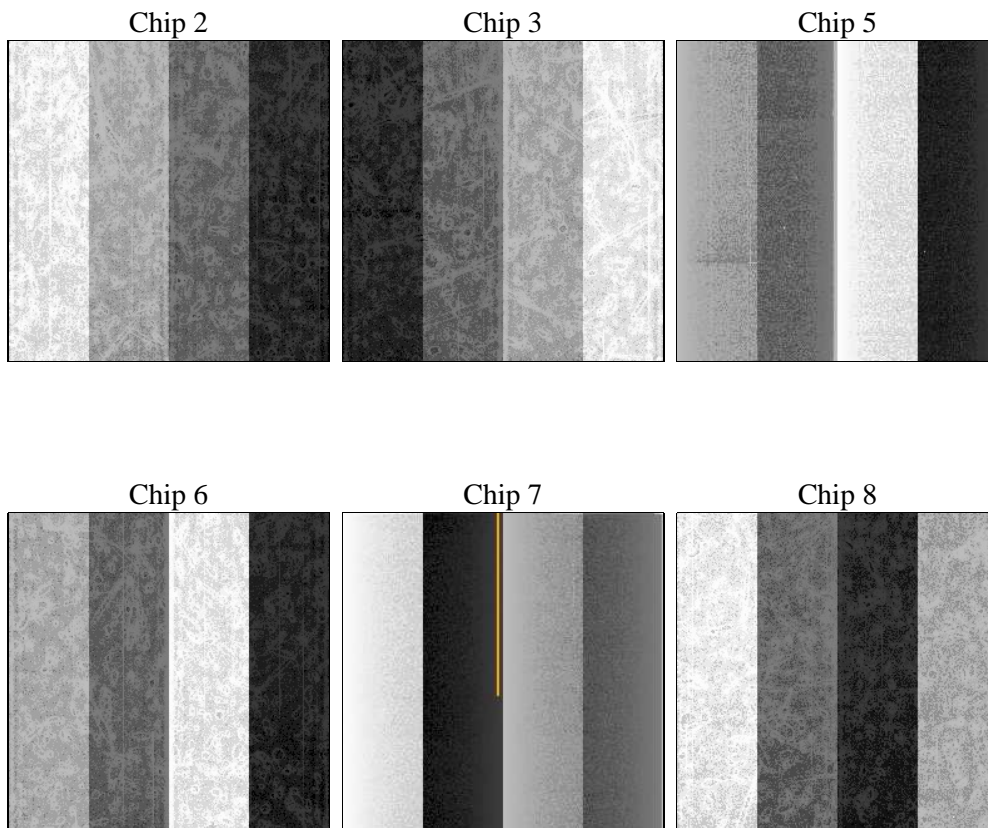
2 OBI Primary

2.1 OBI

2.1.1 Images



2.1.2 Bias



2.1.3 Parameters

obi_num	0	Obi number	sched_exp_time	35000.000000	[s] Scheduled observation exposure time
ascdsver	8.4.5	Processing system revision	ontime	6635.5212922692	Sum of GTIs [s]
caldbver	4.5.1.1	 	ontime2	6635.5212922692	Sum of GTIs [s]
date	2012-08-15T13:39:57	Date and time of file creation	ontime3	6635.5212922692	Sum of GTIs [s]
revision	1	Processing version of data	ontime5	6635.5212922692	Sum of GTIs [s]
			ontime6	6635.5212922692	Sum of GTIs [s]
			ontime7	6635.5212922692	Sum of GTIs [s]
			ontime8	6635.5212724209	Sum of GTIs [s]
			l1events	113104	Number of level 1 events

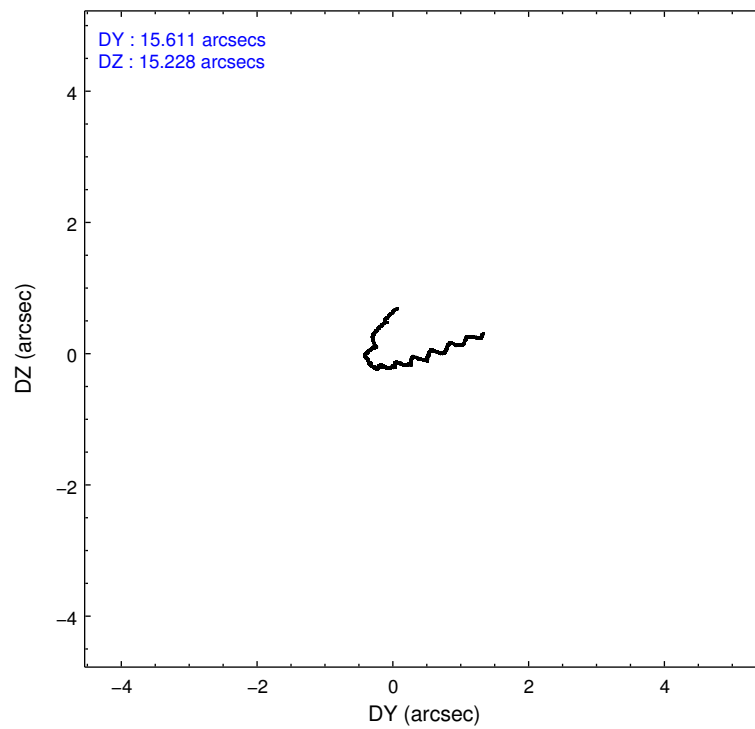
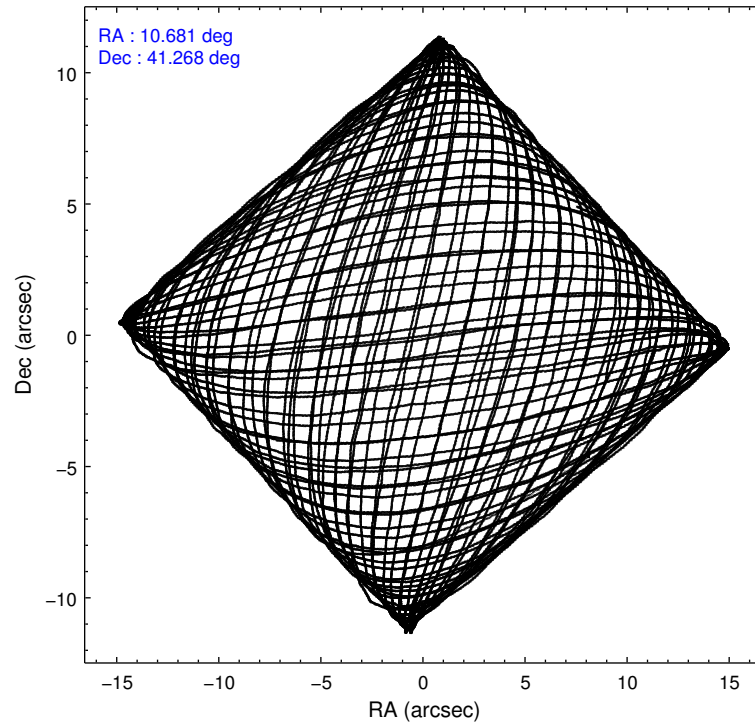
2.1.4 Events

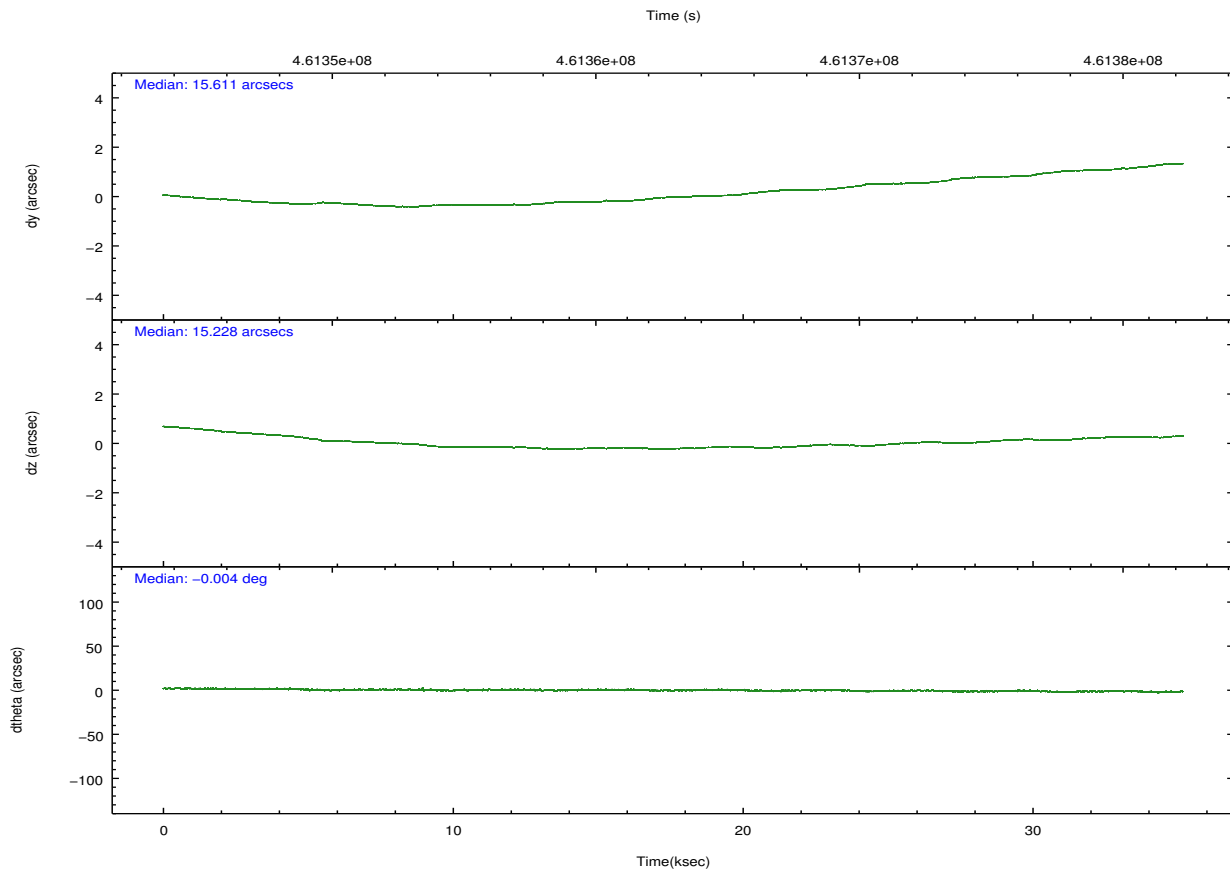
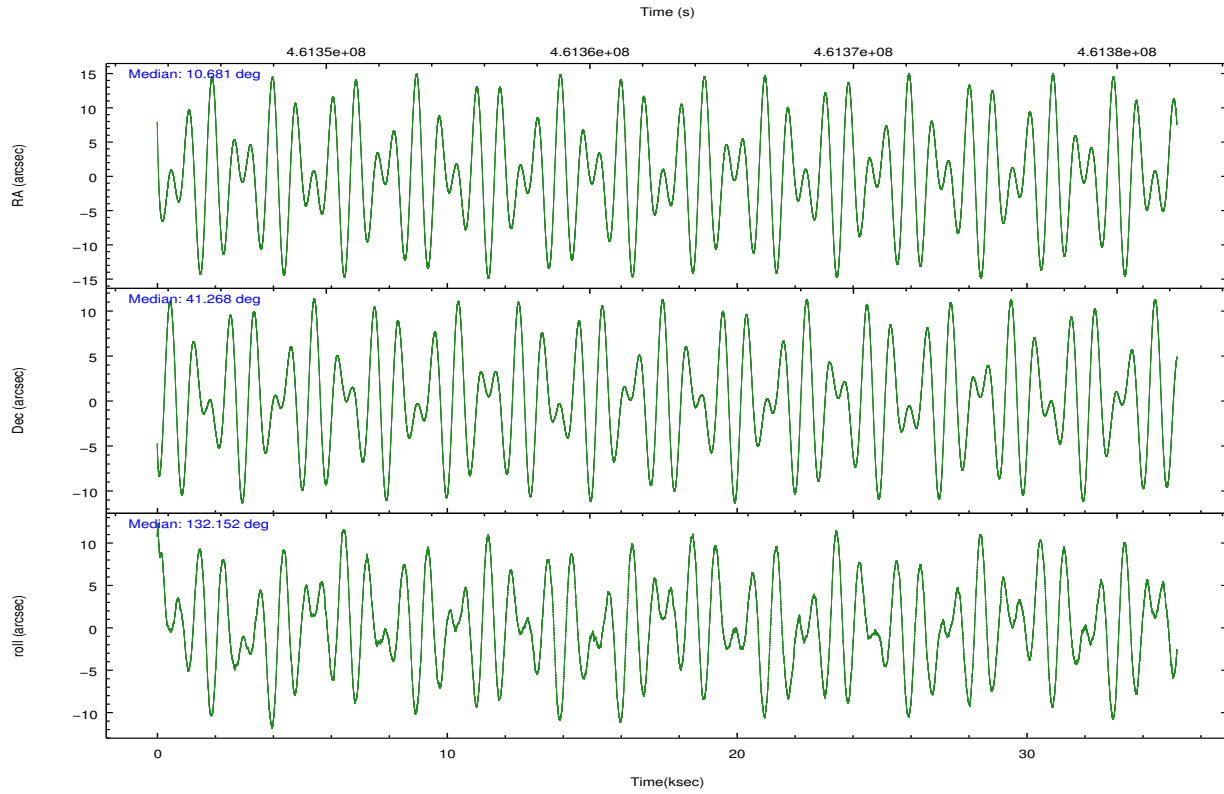
	ccd 2	ccd 3	ccd 5	ccd 6	ccd 7	ccd 8		ccd 2	ccd 3	ccd 5	ccd 6	ccd 7	ccd 8
level 1 events	17517	15368	18796	18443	19915	23065	grade 0 events	404	372	391	846	1312	996
rejected events	16076	13982	11786	16347	11760	18999		2%	2%	2%	4%	6%	4%
rejected %	91%	90%	62%	88%	59%	82%	grade 1 events	6	1	16	6	15	10
								0%	0%	0%	0%	0%	0%
							grade 2 events	381	343	1902	468	1982	944
								2%	2%	10%	2%	9%	4%
							grade 3 events	155	187	320	205	836	454
								0%	1%	1%	1%	4%	1%
							grade 4 events	184	155	315	200	791	399
								1%	1%	1%	1%	3%	1%
							grade 5 events	678	700	1431	729	1448	973
								3%	4%	7%	3%	7%	4%
							grade 6 events	319	331	4086	379	3246	1287
								1%	2%	21%	2%	16%	5%
							grade 7 events	15390	13279	10335	15610	10285	18002
								87%	86%	54%	84%	51%	78%

2.2 Compared Parameters

Parameter	Planned	Actual	Parameter	Planned	Actual
Instrument	ACIS	ACIS	Obspar format version number	7	7
Detector	ACIS-235678	ACIS-235678	Obspar file type	PREDICTED	ACTUAL
Grating	NONE	NONE	Obspar update status	NONE	UPDATED
Data mode	FAINT	FAINT	CCD I0 on	N	N
Observation mode	POINTING	POINTING	CCD I1 on	N	N
[deg] Pointing RA	10.715803	10.68103495106033	CCD I2 on	Y	Y
[deg] Pointing Dec	41.260437	41.2684585286858	CCD I3 on	Y	Y
[deg] Pointing Roll	131.979690	132.1592471032429	CCD S0 on	N	N
[mm] SIM focus pos	-0.684267	-0.6828225247311905	CCD S1 on	O2	Y
[mm] SIM defocus	0	0.001444936568705701	CCD S2 on	Y	Y
[mm] SIM translation stage pos	-190.132523	-190.1400660498719	CCD S3 on	Y	Y
[mm] SIM translation stage offset	0	0.00754346686406393	CCD S4 on	O1	Y
[s] Observation start time (MET)	461345516.184000	461344515.86972	CCD S5 on	N	N
Observation start date	2012-08-14T15:30:49	2012-08-14T15:15:15	Number of optional ACIS chips dropped	0	0
[s] Observation end time (MET)	461380516.184000	461381244.69668	On-chip summing requested	N	N
Observation end date	2012-08-15T01:14:09	2012-08-15T01:27:24	Subarray requested	NONE	NONE
Read mode	TIMED	TIMED	Alternating exposures requested	Y	Y
			[s] Primary exposure time	0.600000	0.6
			[s] Secondary exposure time	0.000000	3.2
			Duty cycle	5	5

2.3 Aspect



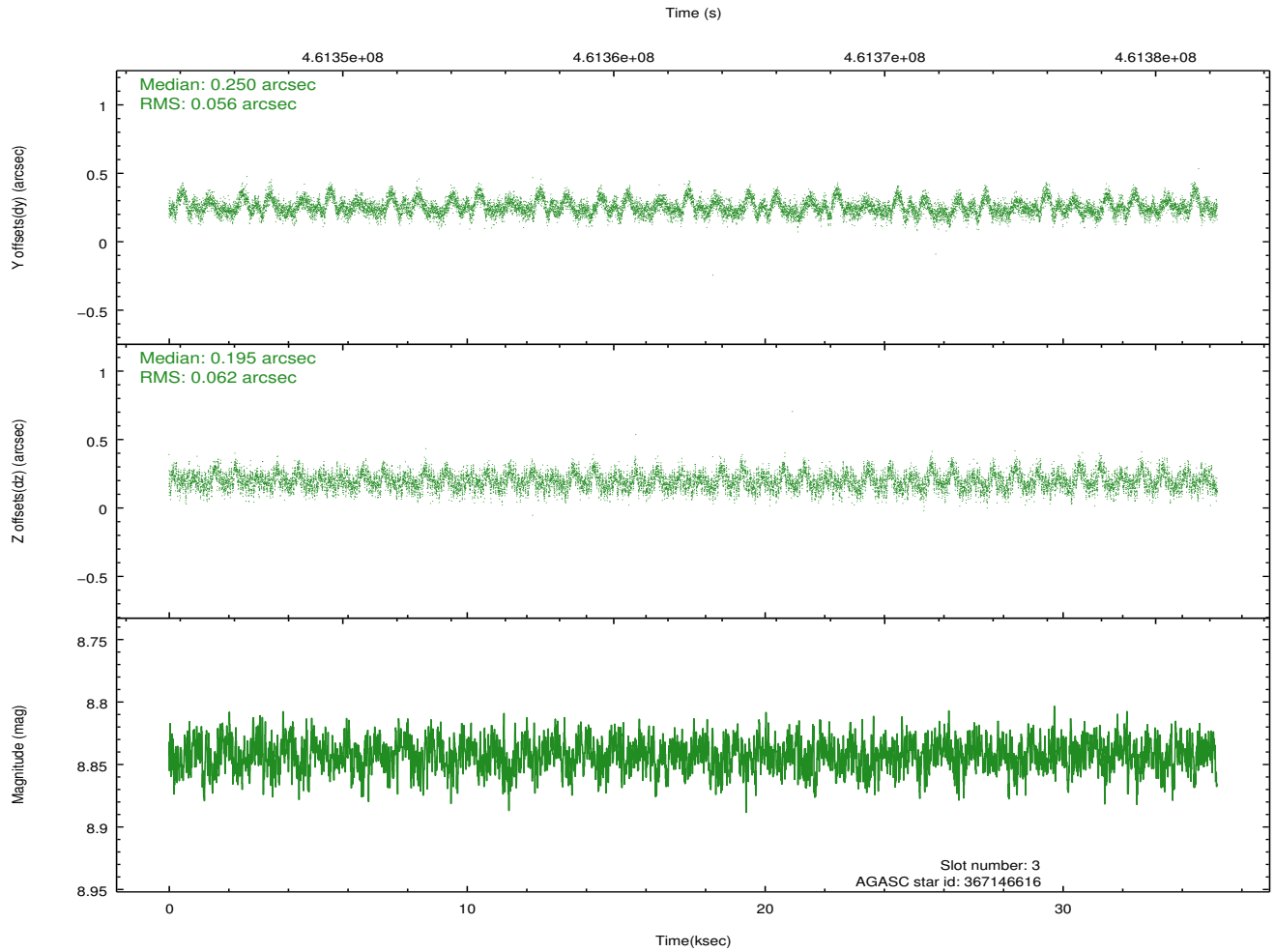
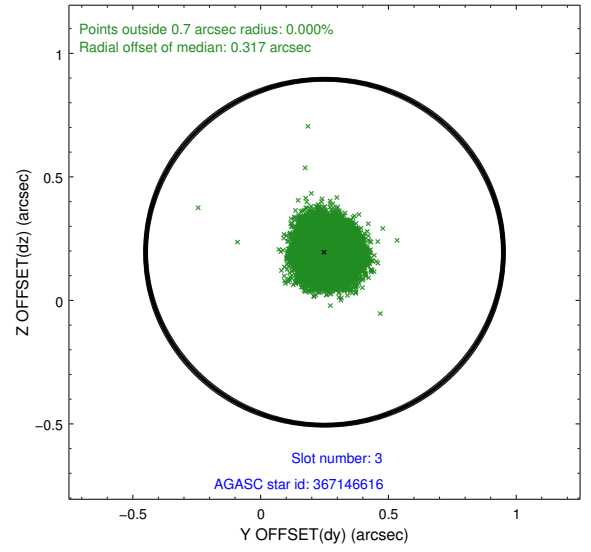
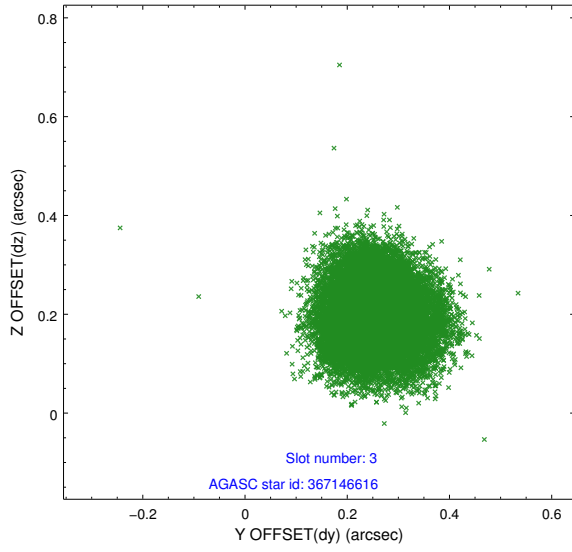


Slot Statistics

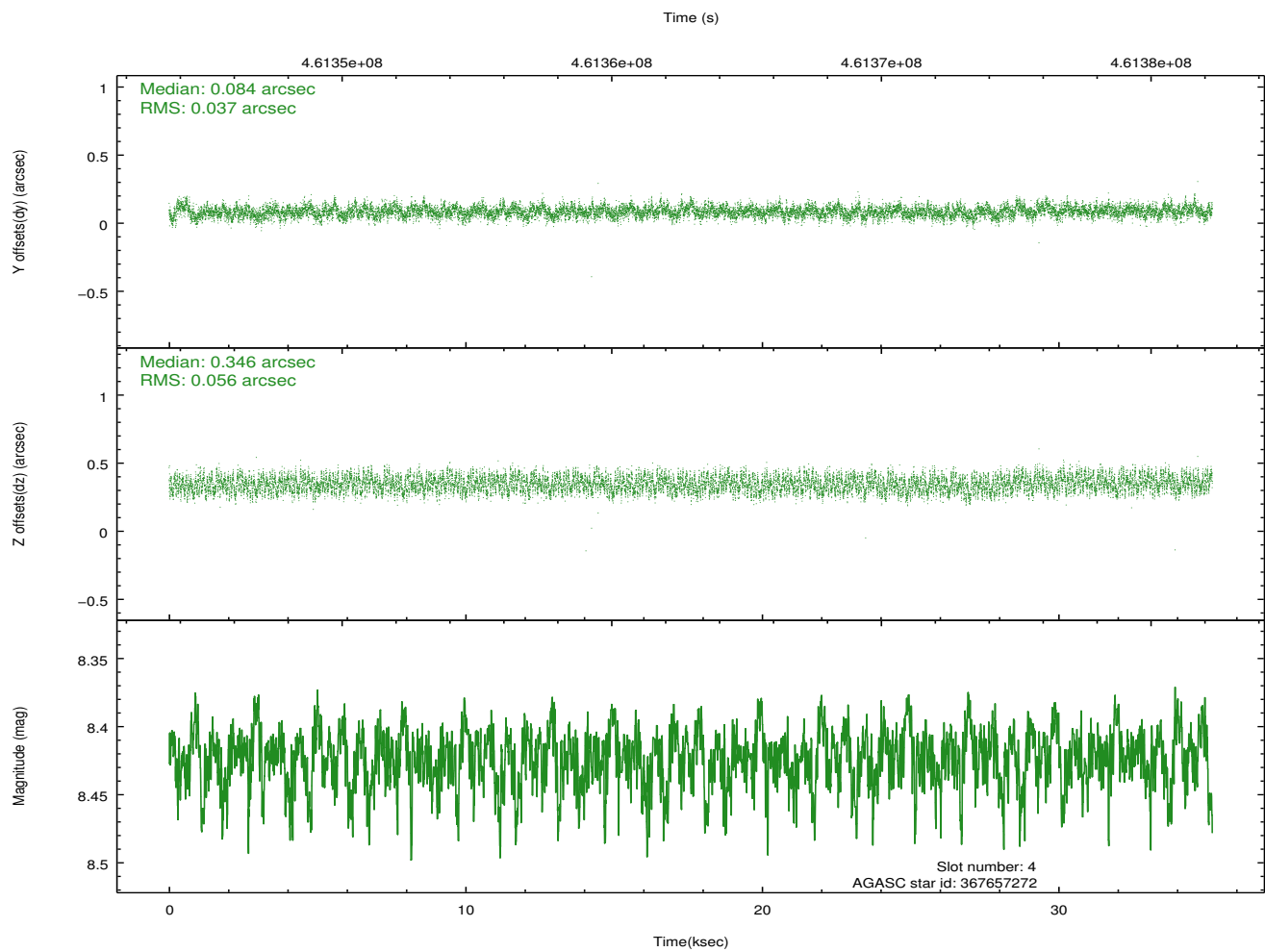
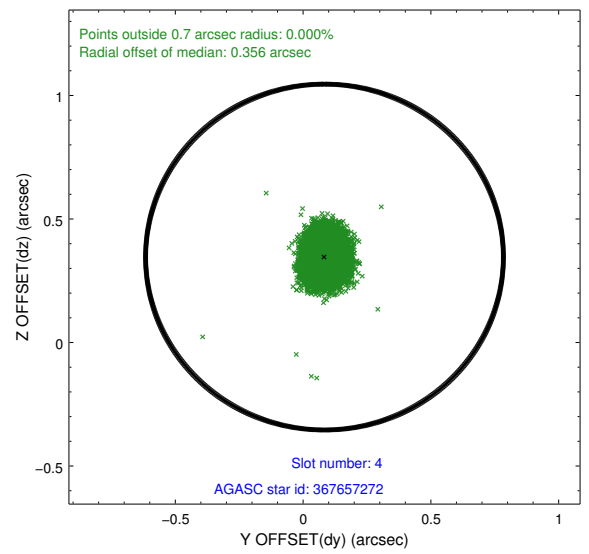
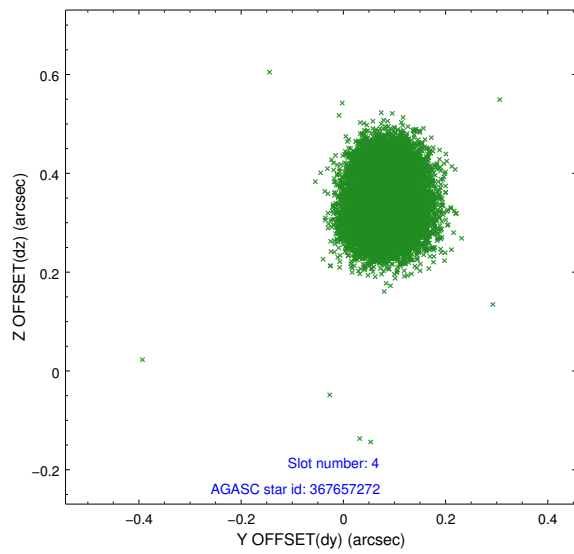
slot	status	id	mag	n_pts	med_dy	med_dz	dr1	dr2	ra	dec	mean_y	mean_z
0	FID	ACIS-S-2	6.94	8581	-0.125	-0.007	0.010	0.019	0.000000	0.000000	-768.90	-1736.66
1	FID	ACIS-S-4	7.03	8581	0.238	0.063	0.014	0.027	0.000000	0.000000	2144.70	171.86
2	FID	ACIS-S-5	7.06	8581	-0.143	-0.047	0.010	0.017	0.000000	0.000000	-1821.73	165.45
3	GUIDE	367146616	8.84	17150	0.250	0.195	0.090	0.141	11.418645	41.190163	-1455.21	-1251.10
4	GUIDE	367657272	8.42	17144	0.084	0.346	0.072	0.112	11.834471	41.298907	-1905.70	-2354.48
5	GUIDE	367663272	9.28	17018	-0.115	-0.065	0.085	0.139	10.656279	41.699429	1282.37	-936.88
6	GUIDE	367674552	8.86	17100	-0.110	0.035	0.112	0.178	11.016238	41.570845	290.74	-1349.64
7	GUIDE	367148872	7.22	17161	-0.104	-0.515	0.070	0.116	10.505940	40.688258	-1148.08	1803.39

2.4 Star Slots

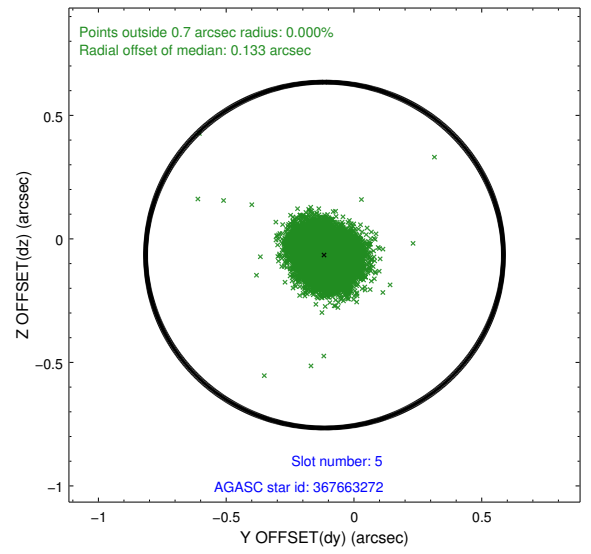
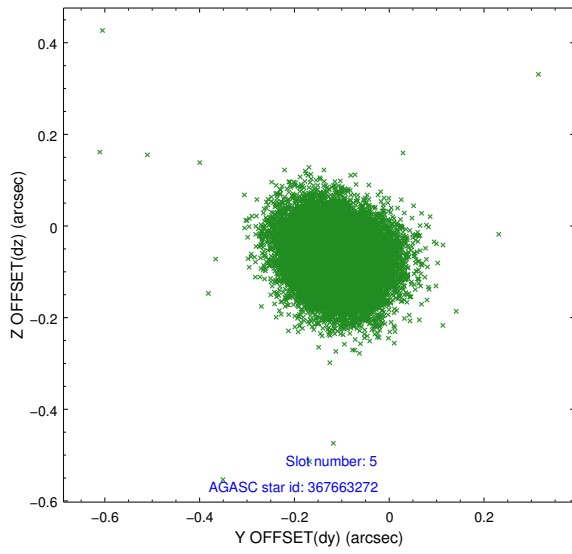
2.4.1 Slot 3



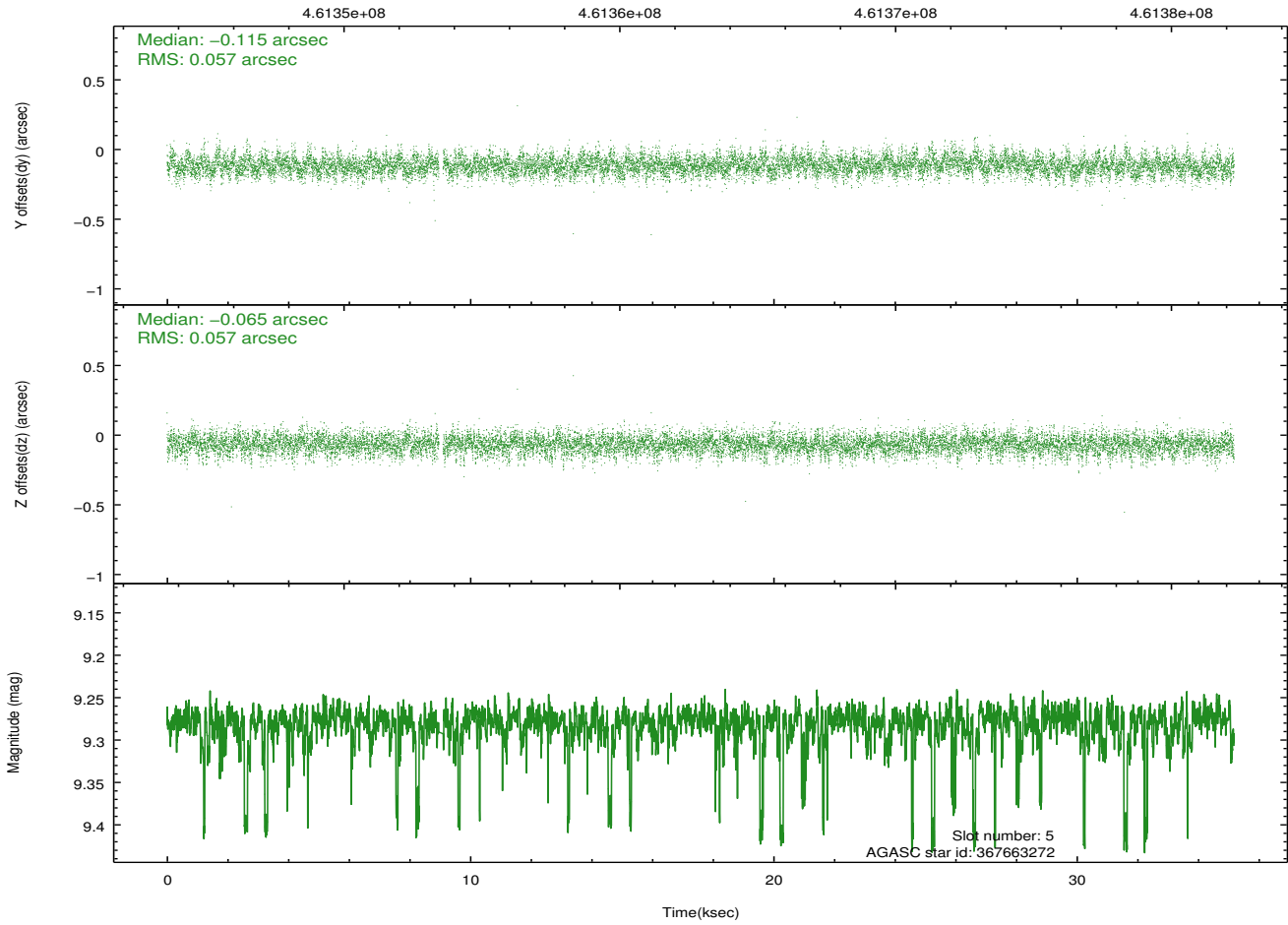
2.4.2 Slot 4



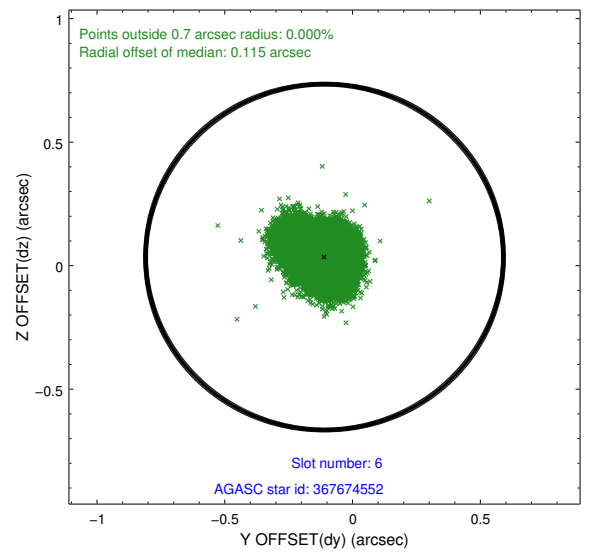
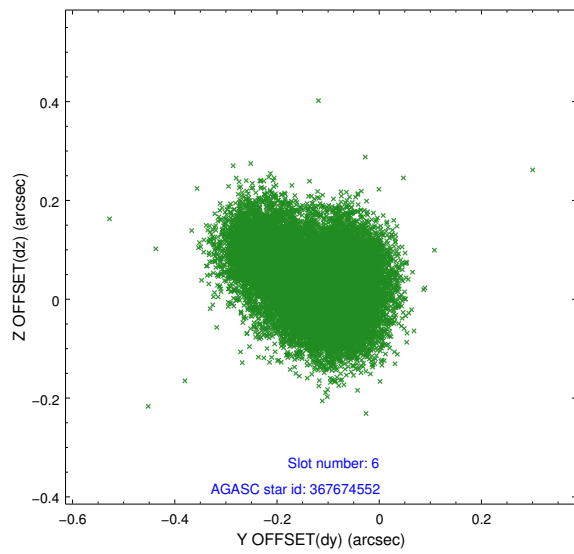
2.4.3 Slot 5



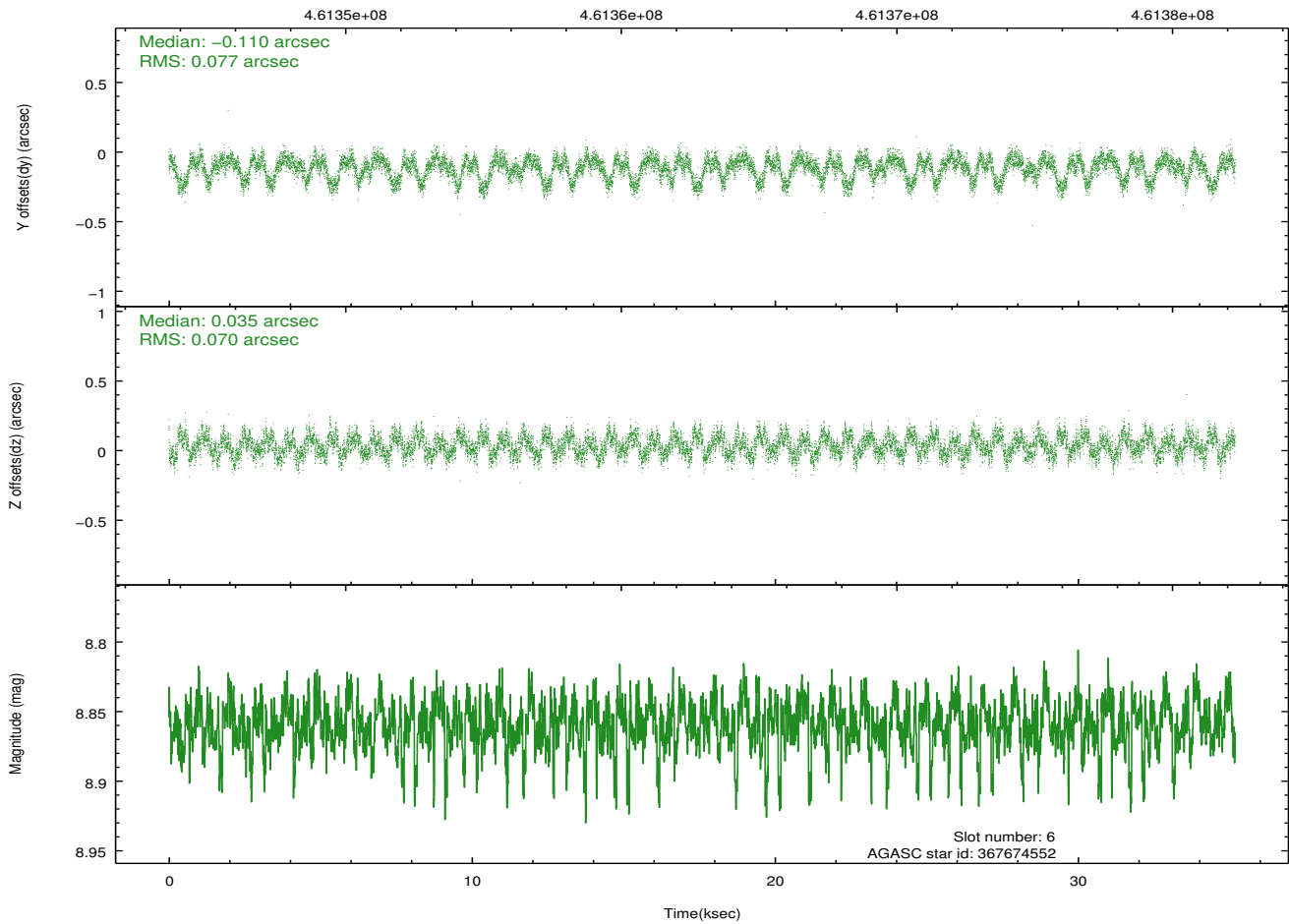
Time (s)



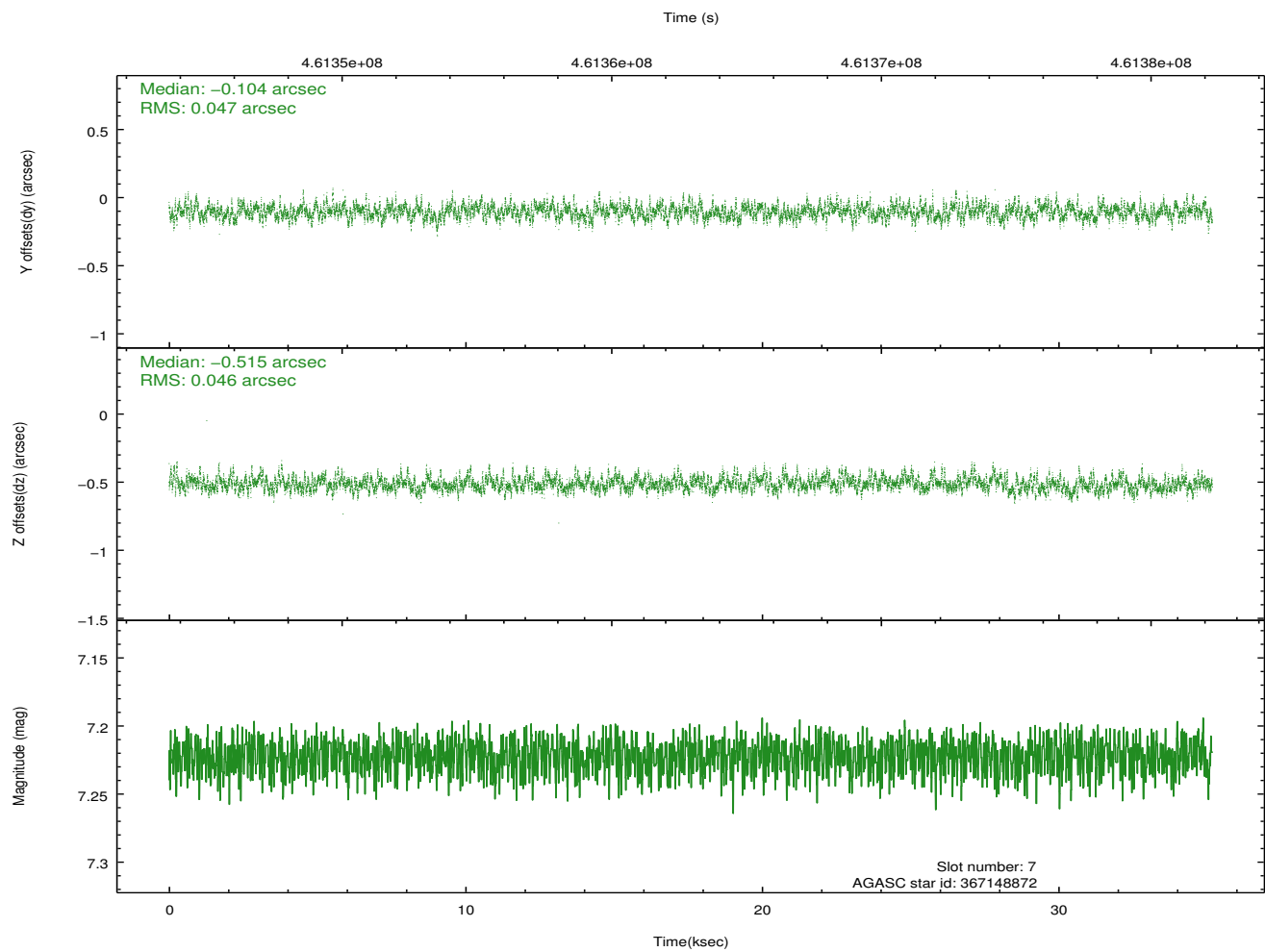
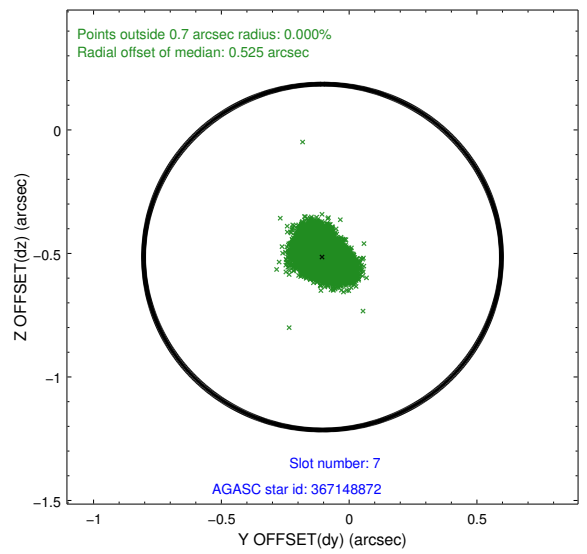
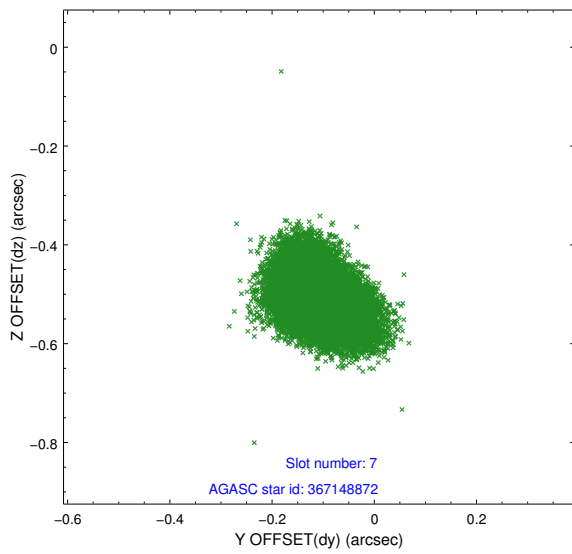
2.4.4 Slot 6



Time (s)

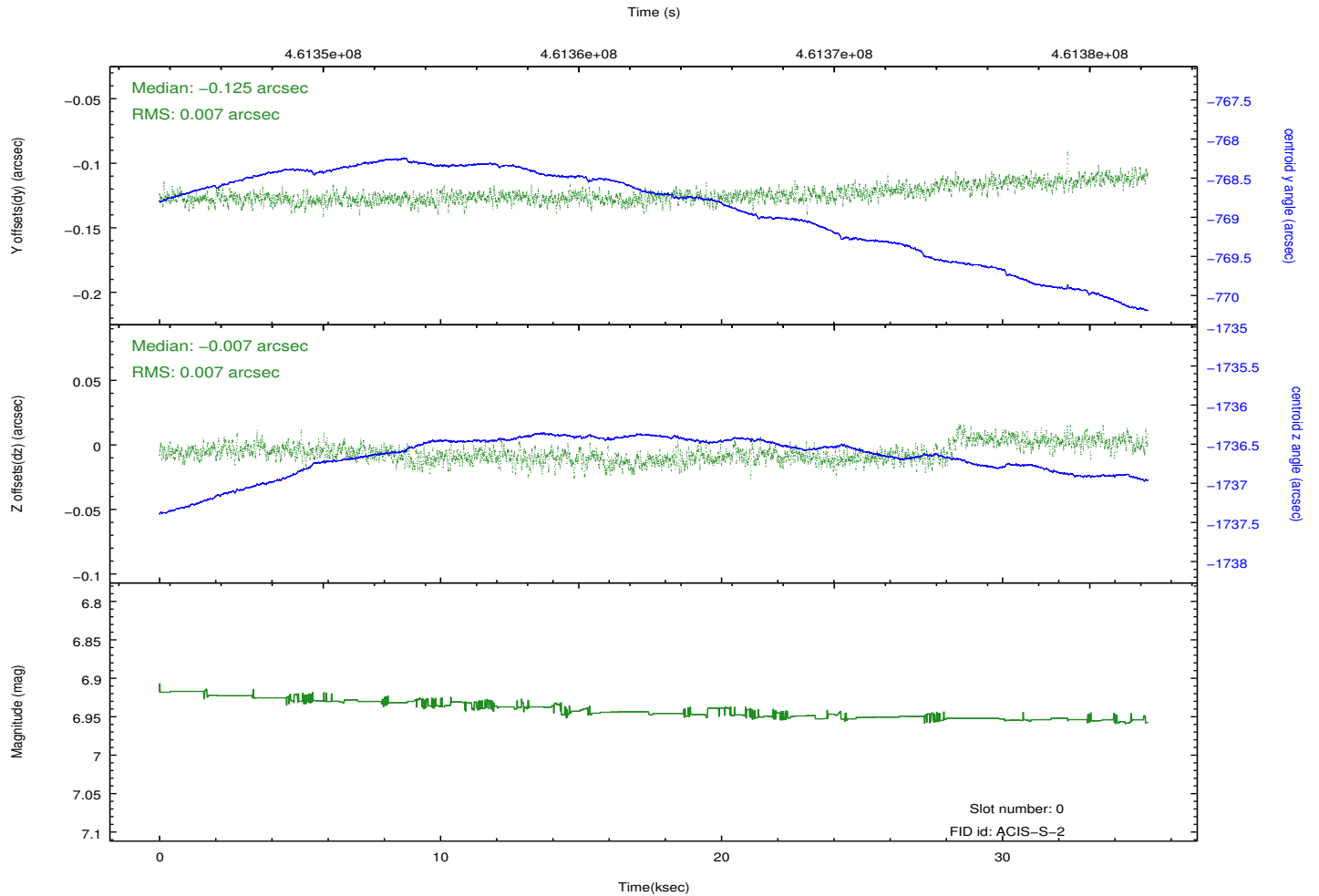
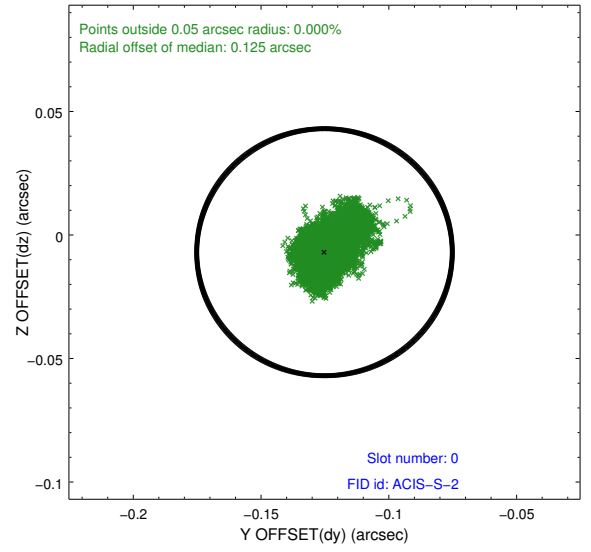
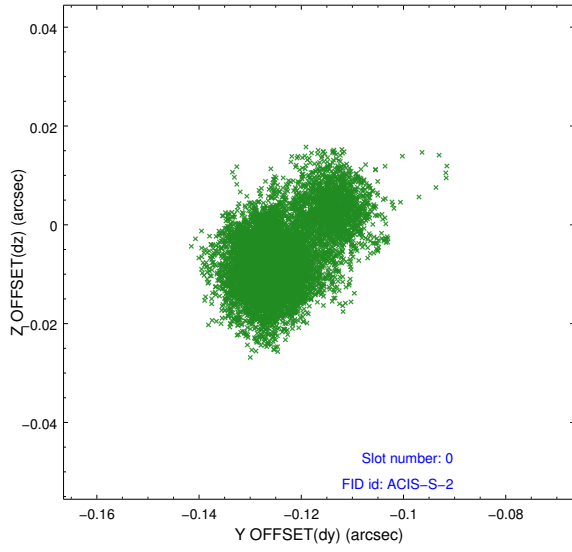


2.4.5 Slot 7

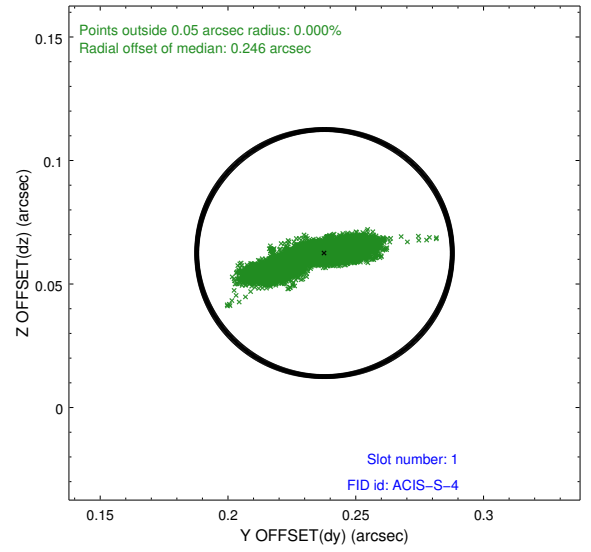
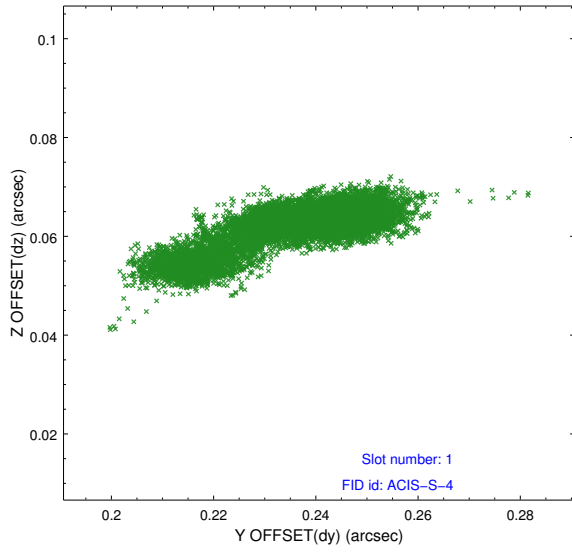


2.5 FID Slots

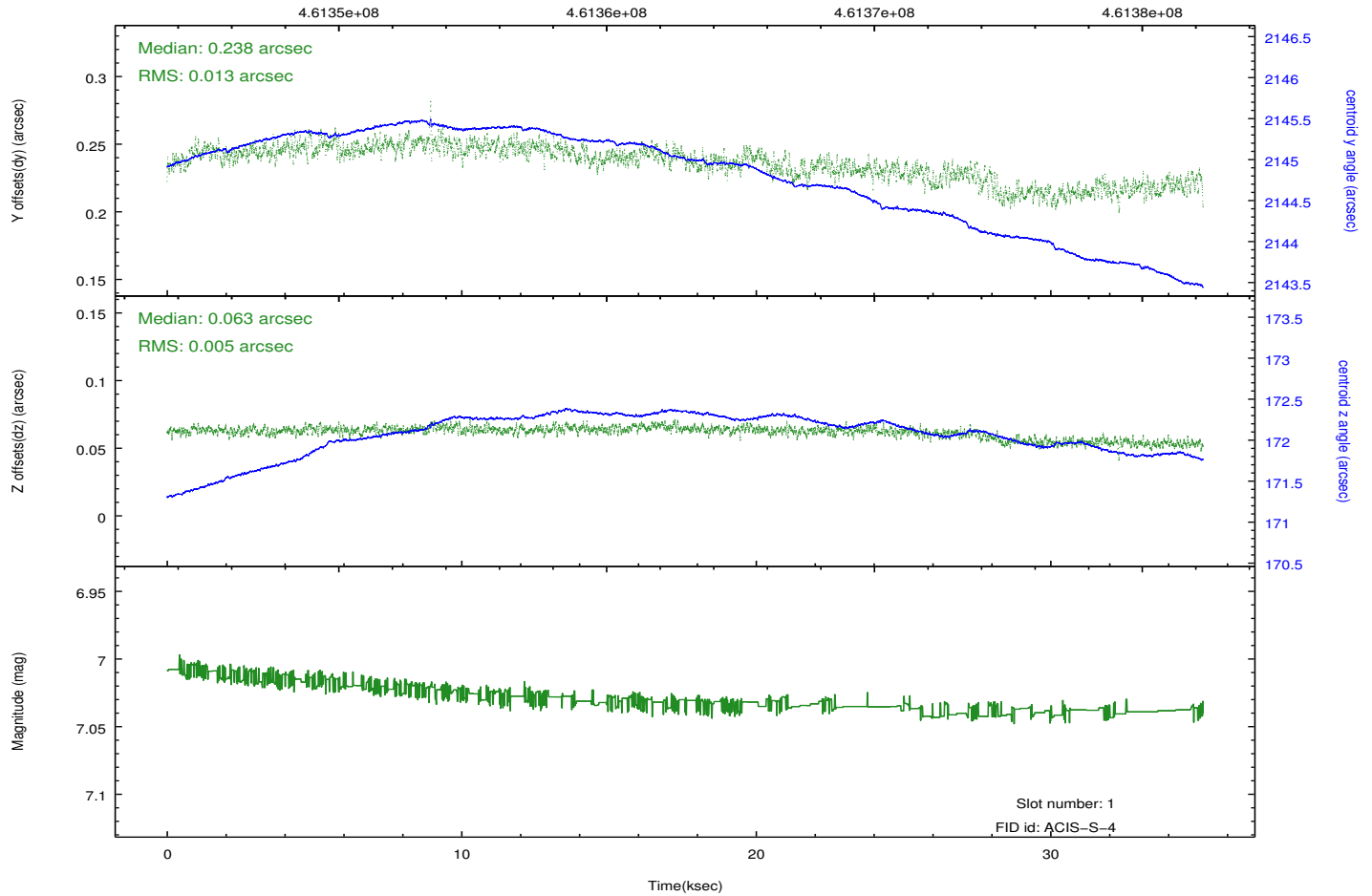
2.5.1 Slot 0



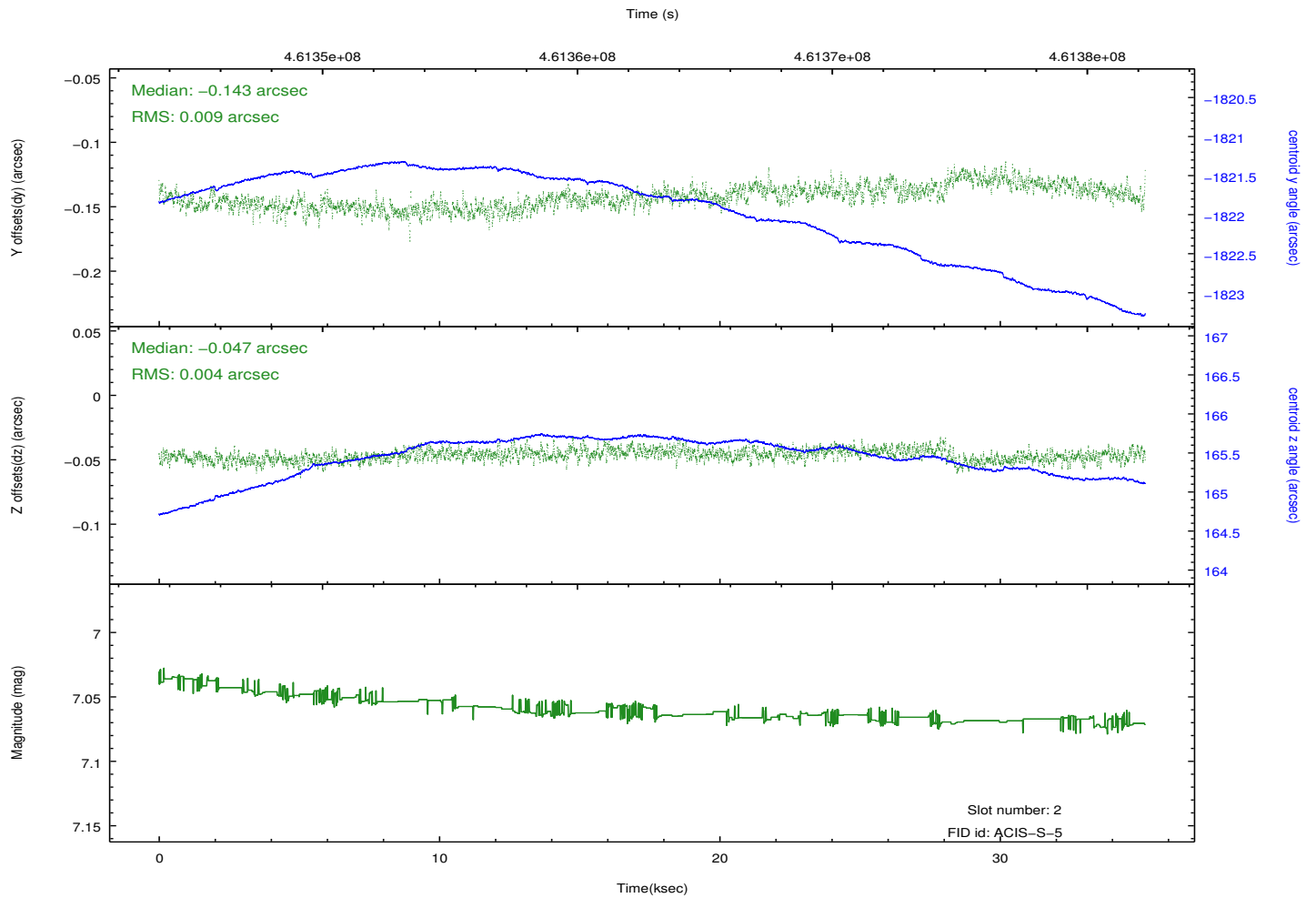
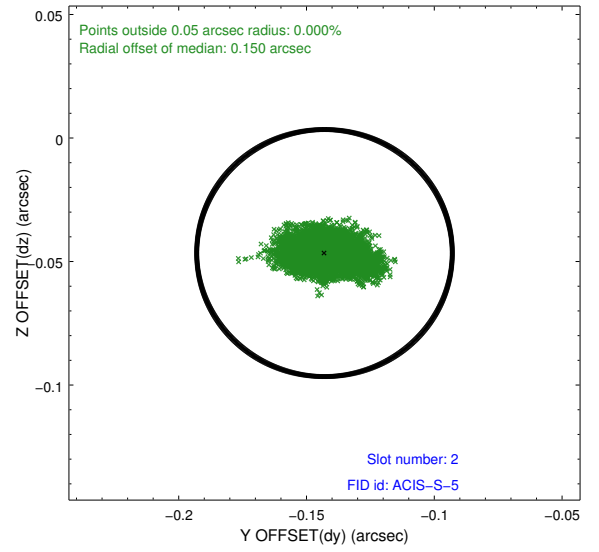
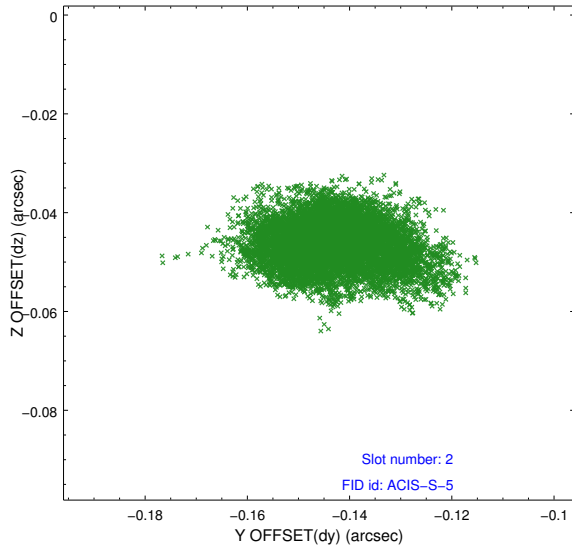
2.5.2 Slot 1



Time (s)



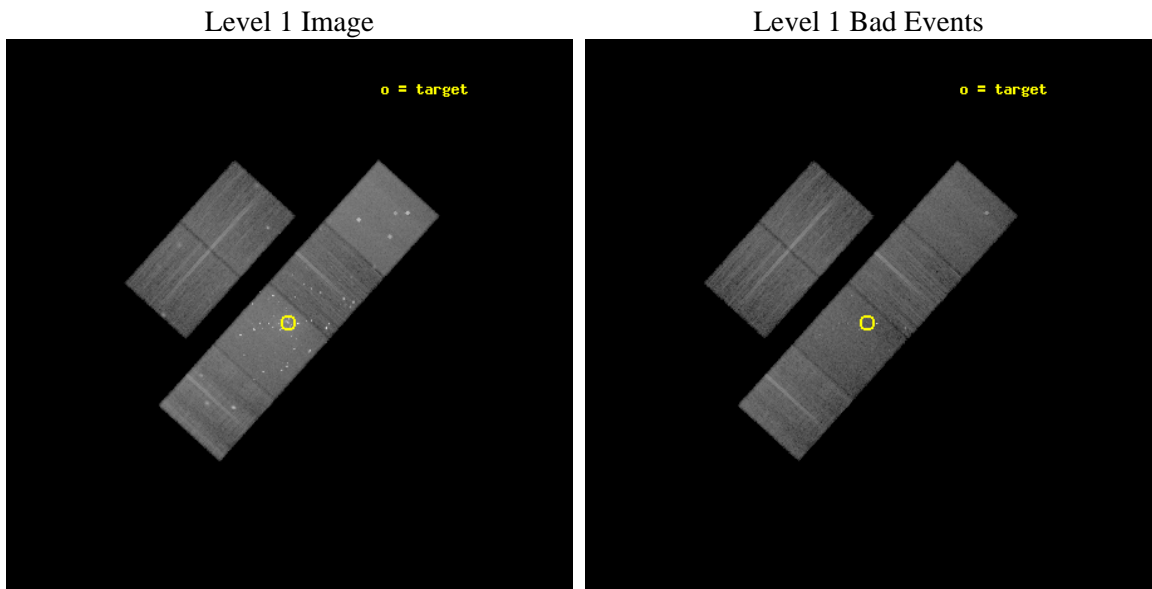
2.5.3 Slot 2



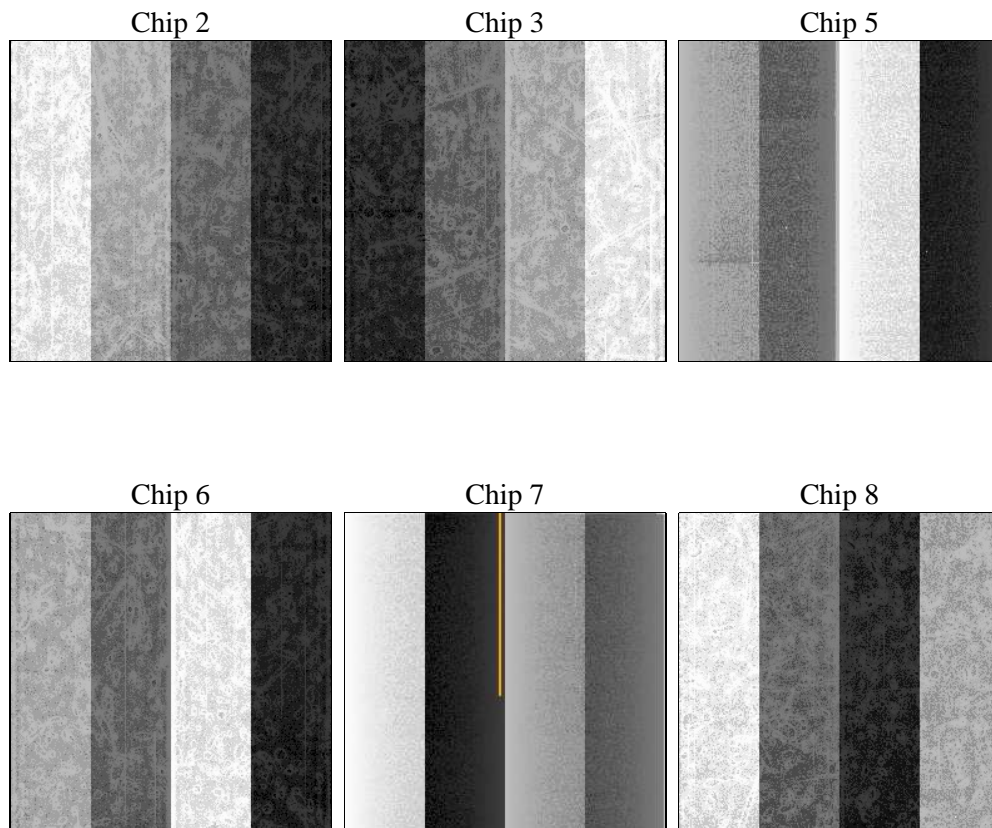
3 OBI Secondary

3.1 OBI

3.1.1 Images



3.1.2 Bias



3.1.3 Parameters

obi_num	0	Obi number	sched_exp_time	35000.000000	[s] Scheduled observation exposure time
ascdsver	8.4.5	Processing system revision	ontime	28242.66192317	Sum of GTIs [s]
caldbver	4.5.1.1	 	ontime2	28239.420823693	Sum of GTIs [s]
date	2012-08-15T13:42:02	Date and time of file creation	ontime3	28242.661677599	Sum of GTIs [s]
revision	1	Processing version of data	ontime5	28242.661935389	Sum of GTIs [s]
			ontime6	28242.661795437	Sum of GTIs [s]
			ontime7	28242.66192317	Sum of GTIs [s]
			ontime8	28242.662012637	Sum of GTIs [s]
			l1events	1131965	Number of level 1 events

3.1.4 Events

	ccd 2	ccd 3	ccd 5	ccd 6	ccd 7	ccd 8		ccd 2	ccd 3	ccd 5	ccd 6	ccd 7	ccd 8
level 1 events	143752	134096	242178	155742	265041	191156	grade 0 events	7249	7381	16145	18857	27713	18084
rejected events	125342	116212	120308	122336	110635	136066		5%	5%	6%	12%	10%	9%
rejected %	87%	86%	49%	78%	41%	71%	grade 1 events	89	90	429	197	471	141
								0%	0%	0%	0%	0%	0%
							grade 2 events	4294	3647	37159	5545	35549	12655
								2%	2%	15%	3%	13%	6%
							grade 3 events	1734	1772	4015	2331	15016	5387
								1%	1%	1%	1%	5%	2%
							grade 4 events	1837	1726	3706	2277	14944	5000
								1%	1%	1%	1%	5%	2%
							grade 5 events	6435	7219	17794	7331	21237	10419
								4%	5%	7%	4%	8%	5%
							grade 6 events	3298	3362	60864	4400	61206	13968
								2%	2%	25%	2%	23%	7%
							grade 7 events	118816	108899	102066	114804	88905	125502
								82%	81%	42%	73%	33%	65%

A Summary

A.1 Status

V&V Scientist	Jen Lauer
V&V Date (YYYY-MM-DD)	2012.08.15
V&V Edition	1
V&V Disposition and Status	OK
V&V Charge Time	34.8781832154392

A.2 Comments