

V&V Reference Report

L2 ASCDS Version : 8.4.3

Observation 14415 - L2 Version 1
Chandra X-Ray Center

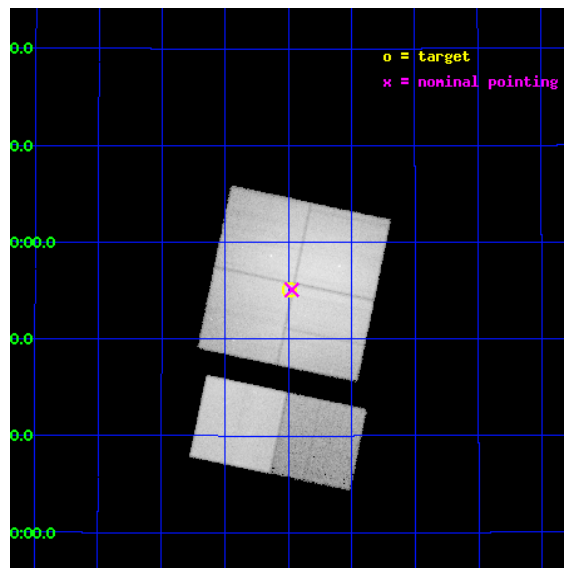
L2 Processing Date : Apr 14 2012

Contents

1	Front	2
2	OBI	3
2.1	OBI	3
2.1.1	Images	3
2.1.2	Bias	3
2.1.3	Parameters	4
2.1.4	Events	4
2.2	Compared Parameters	5
2.3	Aspect	6
2.4	Star Slots	9
2.4.1	Slot 3	9
2.4.2	Slot 4	10
2.4.3	Slot 5	11
2.4.4	Slot 6	12
2.4.5	Slot 7	13
2.5	FID Slots	14
2.5.1	Slot 0	14
2.5.2	Slot 1	15
2.5.3	Slot 2	16
A	Summary	17
A.1	Status	17
A.2	Comments	17

1 Front

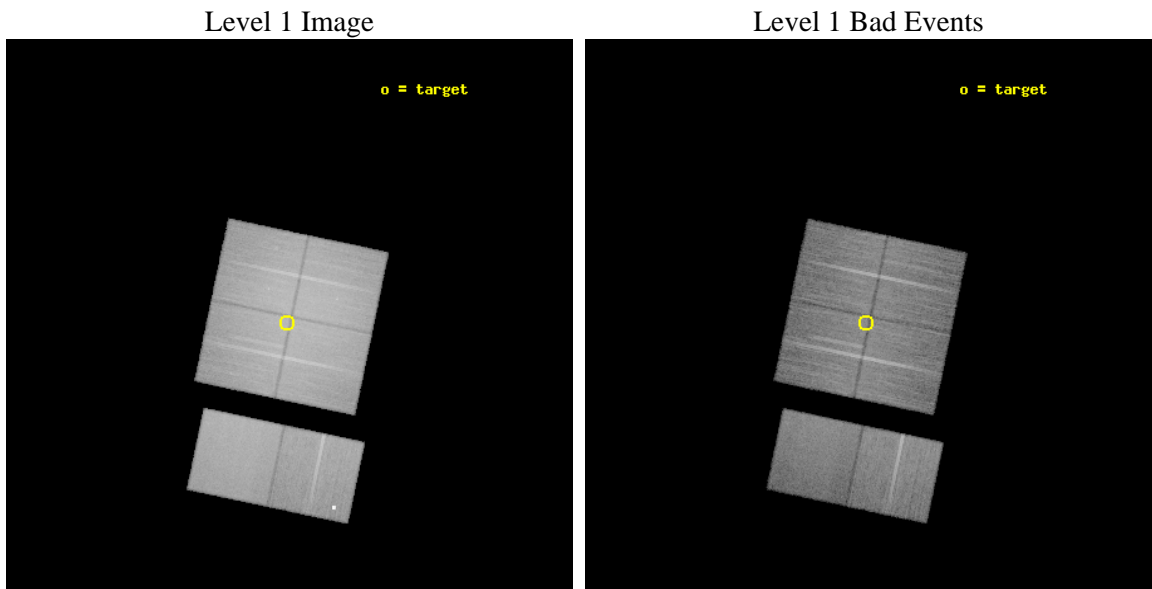
seq_num	801175	Sequence number
obs_id	14415	Observation id
title	Examining incredible structure in the core of the Coma cluster	Pro
observer	Dr Jeremy Sanders	Principal investigator
object	Coma cluster	Source name
dtcycle	0	
cycle	P	events from which exps? Prim/Second/Both
ra_targ	194.99819	Observer's specified target RA [deg]
dec_targ	27.917353	Observer's specified target Dec [deg]
ra_nom	194.99294345004	Nominal RA [deg]
dec_nom	27.918177256635	Nominal Dec [deg]
roll_nom	191.86263664779	Nominal Roll [deg]
revision	1	Processing version of data
ontime	34969.599869788	Sum of GTIs [s]
livetime	34526.793740071	Livetime [s]
ontime0	34966.358819485	Sum of GTIs [s]
ontime1	34963.117749155	Sum of GTIs [s]
ontime2	34966.358809412	Sum of GTIs [s]
ontime3	34969.599869788	Sum of GTIs [s]
ontime6	34959.87665838	Sum of GTIs [s]
ontime7	34969.599869788	Sum of GTIs [s]
l2events	774924	Number of level 2 events



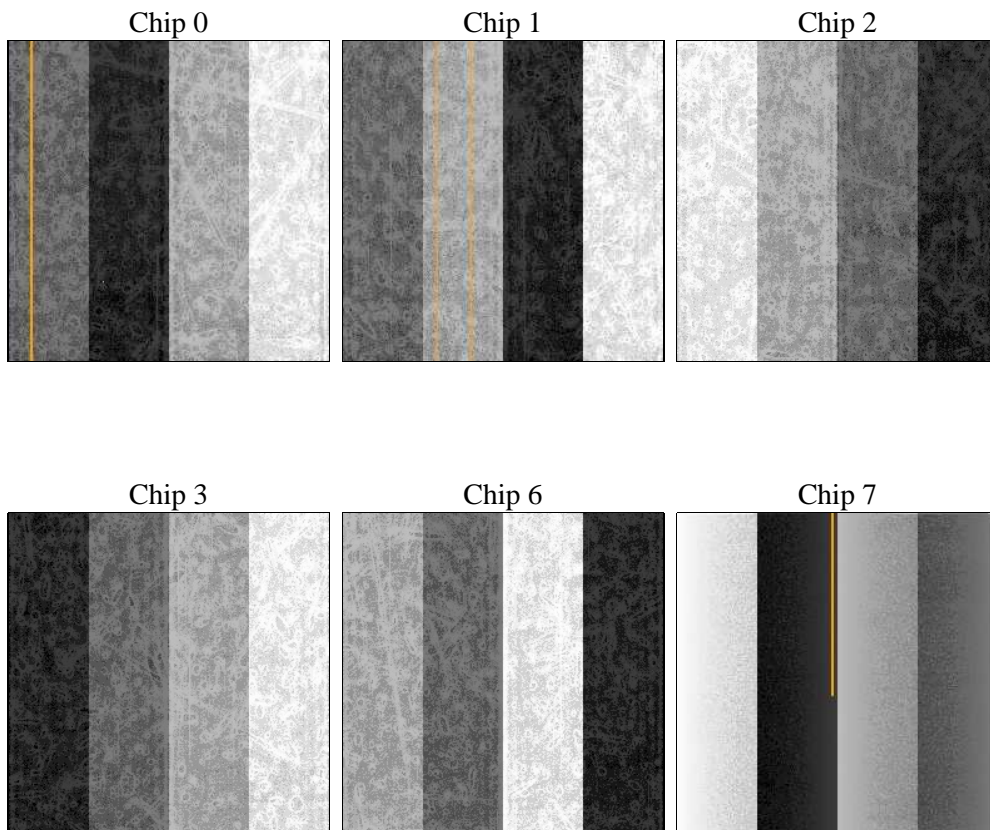
2 OBI

2.1 OBI

2.1.1 Images



2.1.2 Bias



2.1.3 Parameters

obi_num	0	Obi number	sched_exp_time	35000.000000	[s] Scheduled observation exposure time
ascdsver	8.4.3	Processing system revision	ontime	34969.599869788	Sum of GTIs [s]
caldbver	4.4.9	 	ontime0	34966.358819485	Sum of GTIs [s]
date	2012-04-14T16:42:31	Date and time of file creation	ontime1	34963.117749155	Sum of GTIs [s]
revision	1	Processing version of data	ontime2	34966.358809412	Sum of GTIs [s]
			ontime3	34969.599869788	Sum of GTIs [s]
			ontime6	34959.87665838	Sum of GTIs [s]
			ontime7	34969.599869788	Sum of GTIs [s]
			l1events	1882234	Number of level 1 events

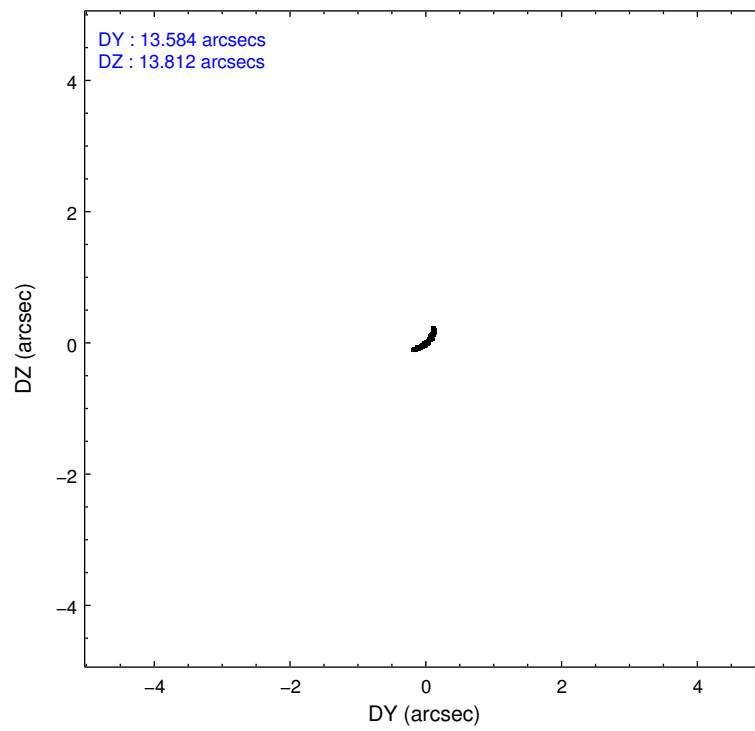
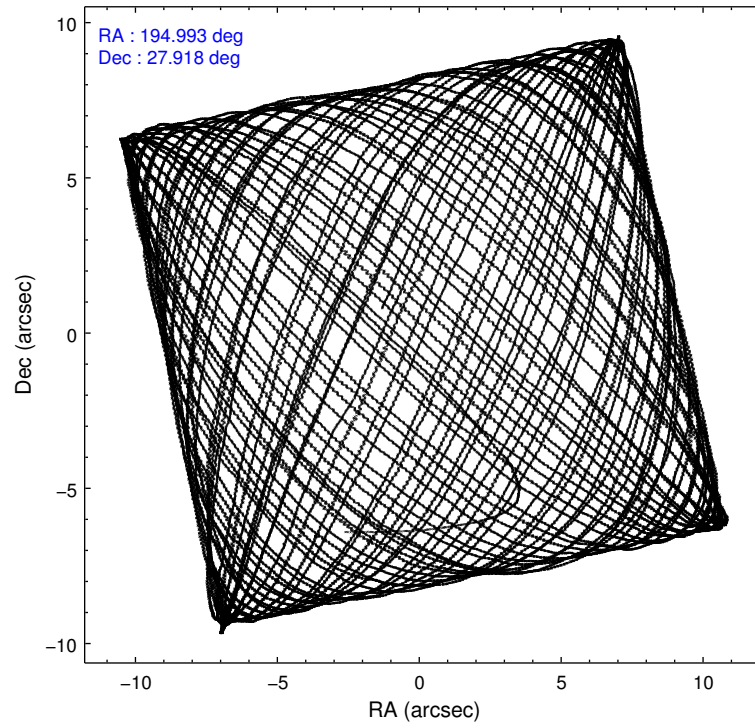
2.1.4 Events

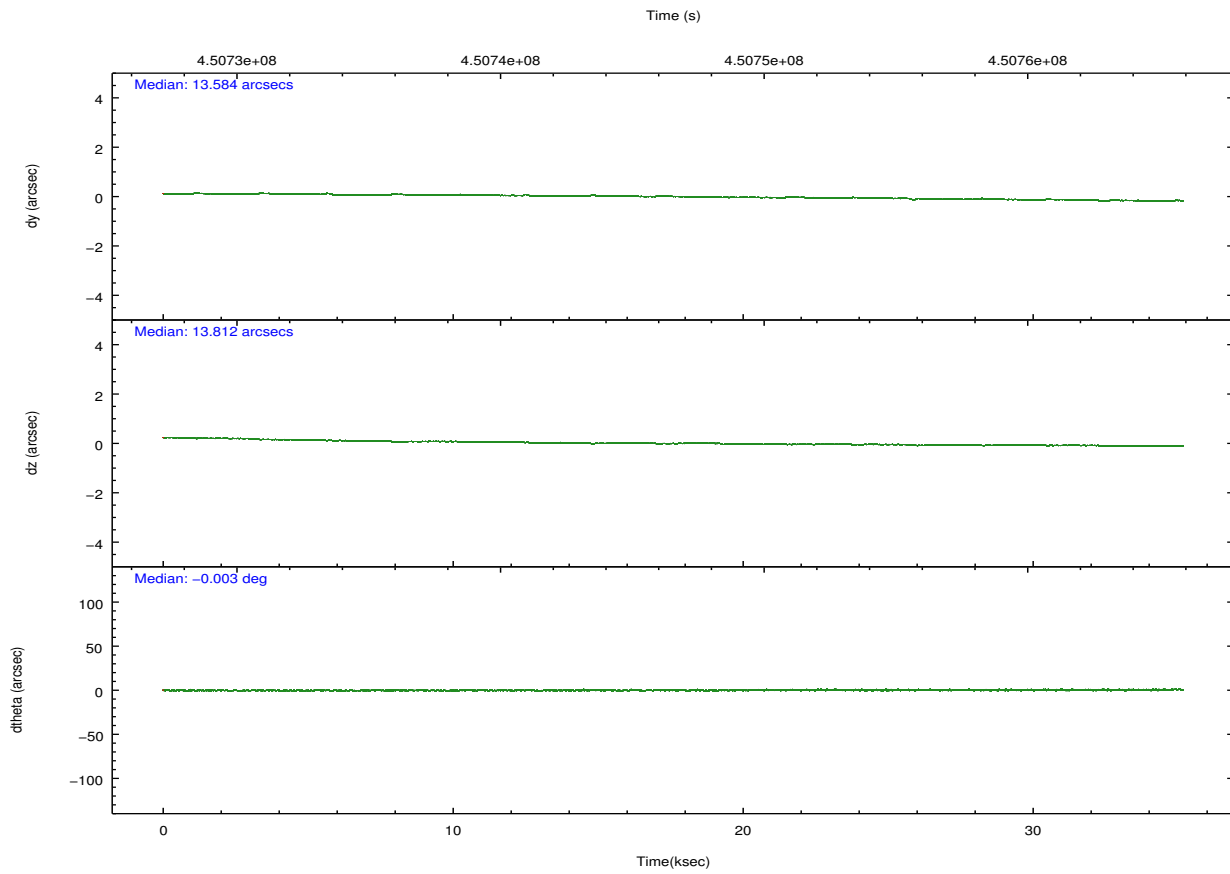
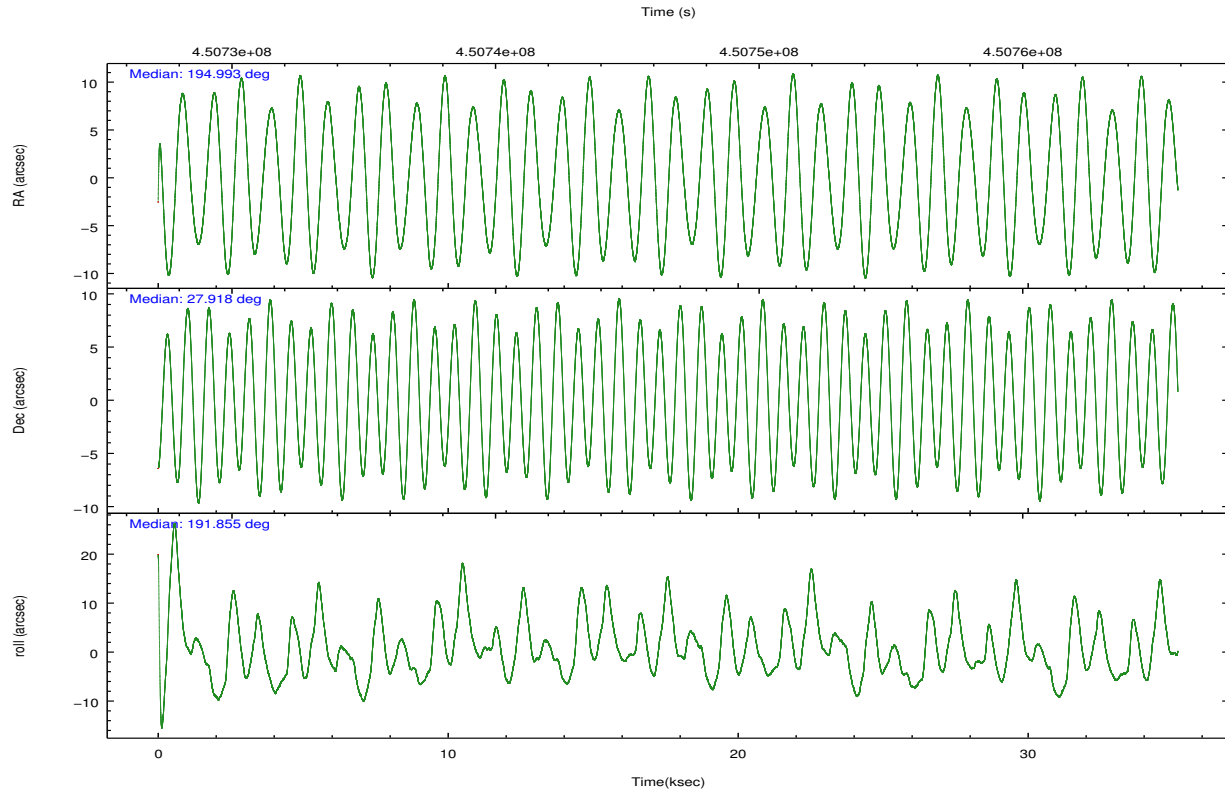
	ccd 0	ccd 1	ccd 2	ccd 3	ccd 6	ccd 7		ccd 0	ccd 1	ccd 2	ccd 3	ccd 6	ccd 7
level 1 events	363267	322305	348958	309538	243711	294455	grade 0 events	146377	109336	124671	95557	22446	17477
rejected events	166815	170696	181883	178954	192983	152546		40%	33%	35%	30%	9%	5%
rejected %	45%	52%	52%	57%	79%	51%	grade 1 events	726	535	710	530	150	313
								0%	0%	0%	0%	0%	0%
							grade 2 events	23855	19716	20054	16054	16022	30300
								6%	6%	5%	5%	6%	10%
							grade 3 events	8107	6595	6950	5680	3048	12689
								2%	2%	1%	1%	1%	4%
							grade 4 events	8108	6568	7025	5831	3016	12473
								2%	2%	2%	1%	1%	4%
							grade 5 events	9886	10082	9297	10658	10576	28076
								2%	3%	2%	3%	4%	9%
							grade 6 events	10021	9414	8398	7475	6197	68983
								2%	2%	2%	2%	2%	23%
							grade 7 events	156187	160059	171853	167753	182256	124144
								42%	49%	49%	54%	74%	42%

2.2 Compared Parameters

Parameter	Planned	Actual	Parameter	Planned	Actual
Instrument	ACIS	ACIS	Obspar format version number	7	7
Detector	ACIS-012367	ACIS-012367	Obspar file type	PREDICTED	ACTUAL
Grating	NONE	NONE	Obspar update status	NONE	UPDATED
Data mode	VFAINT	VFAINT	CCD I0 on	Y	Y
Observation mode	POINTING	POINTING	CCD I1 on	Y	Y
[deg] Pointing RA	195.016039	194.9929434500386	CCD I2 on	Y	Y
[deg] Pointing Dec	27.936605	27.91817725663517	CCD I3 on	Y	Y
[deg] Pointing Roll	191.643119	191.8626366477914	CCD S0 on	N	N
[mm] SIM focus pos	-0.782348	-0.7809083437167272	CCD S1 on	N	N
[mm] SIM defocus	0	0.001439871863259334	CCD S2 on	O2	Y
[mm] SIM translation stage pos	-233.592463	-233.5874344608287	CCD S3 on	O1	Y
[mm] SIM translation stage offset	0	-0.005018542100998502	CCD S4 on	N	N
[s] Observation start time (MET)	450729124.184000	450727737.508	CCD S5 on	N	N
Observation start date	2012-04-13T18:30:58	2012-04-13T18:08:57	Number of optional ACIS chips dropped	0	0
[s] Observation end time (MET)	450764124.184000	450765588.19751	On-chip summing requested	N	N
Observation end date	2012-04-14T04:14:18	2012-04-14T04:39:48	Subarray requested	NONE	NONE
Read mode	TIMED	TIMED	Alternating exposures requested	N	N
			[s] Primary exposure time	0.000000	3.2

2.3 Aspect





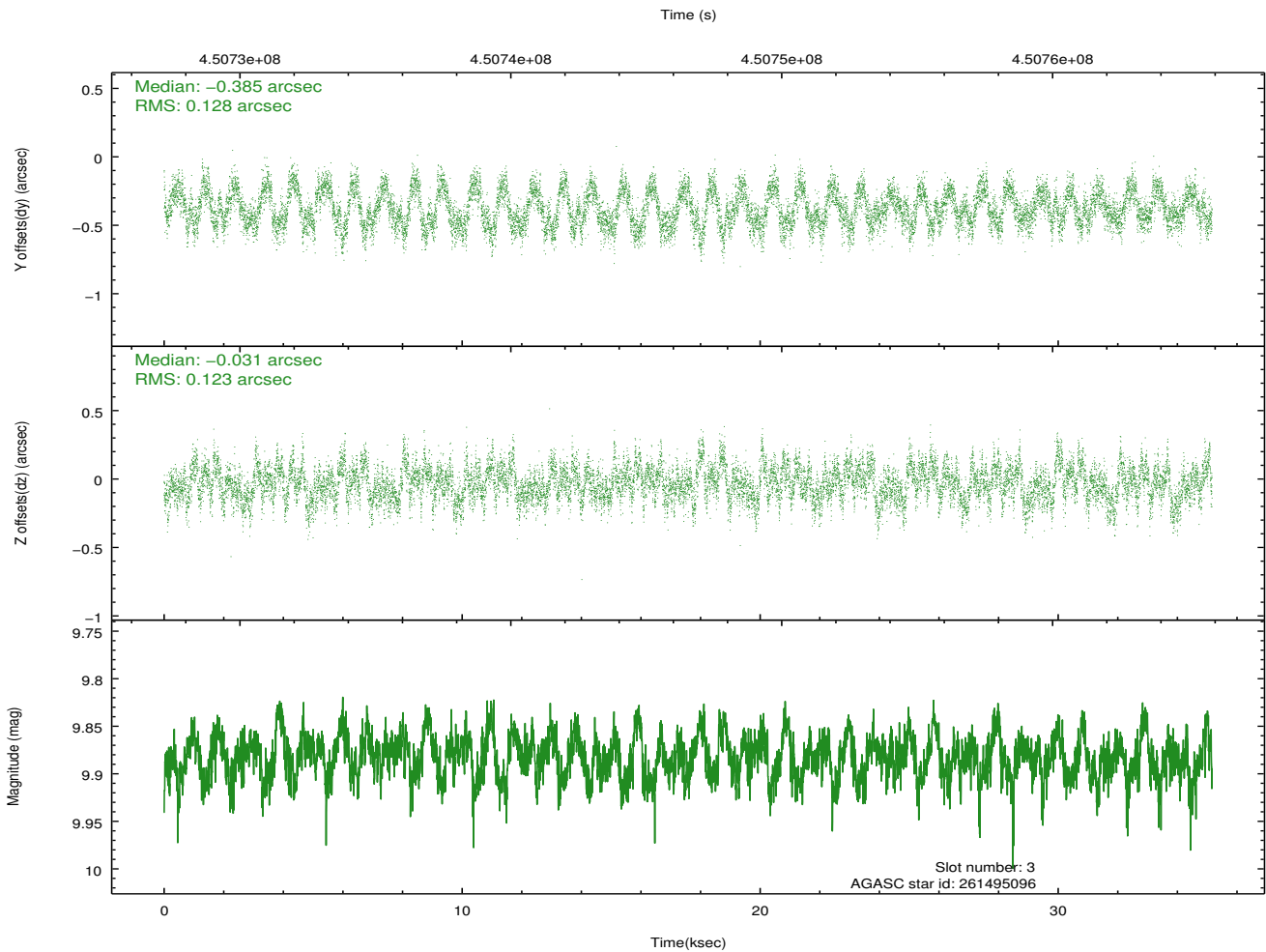
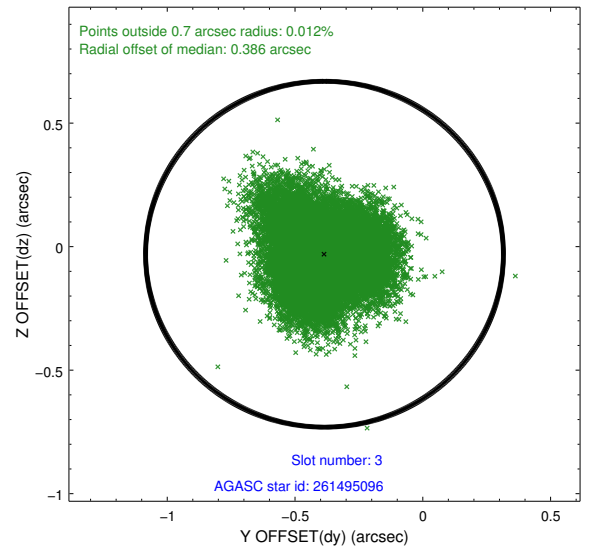
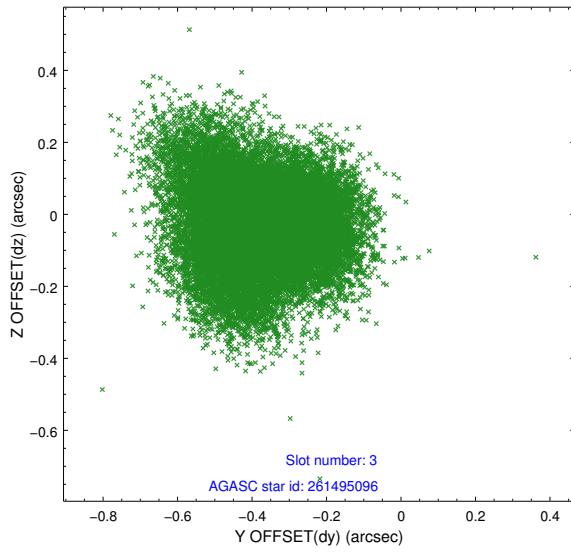
Slot Statistics

slot	status	id	mag	n_pts	med_dy	med_dz	dr1	dr2	ra	dec	mean_y	mean_z
0	FID	ACIS-I-1	7.14	8578	0.043	0.019	0.006	0.011	0.000000	0.000000	925.98	-837.37
1	FID	ACIS-I-5	7.13	8577	-0.216	0.054	0.007	0.012	0.000000	0.000000	-1822.39	1060.10
2	FID	ACIS-I-6	7.14	8578	0.082	-0.003	0.009	0.016	0.000000	0.000000	391.49	1704.62
3	GUIDE	261495096	9.88	17121	-0.385	-0.031	0.192	0.295	194.411078	28.430653	1517.07	-2132.88
4	GUIDE	261497216	9.80	17007	0.286	0.250	0.171	0.264	195.387564	28.631739	-1653.91	-2215.83
5	GUIDE	261498392	8.30	17080	0.855	-0.213	0.111	0.177	194.888587	28.238913	177.84	-1147.90
6	GUIDE	261502496	7.36	17146	-0.653	0.181	0.102	0.158	194.887297	28.065668	306.88	-537.53
7	GUIDE	261490688	10.29	17102	-0.109	-0.162	0.205	0.326	194.649982	27.195247	1686.70	2375.91

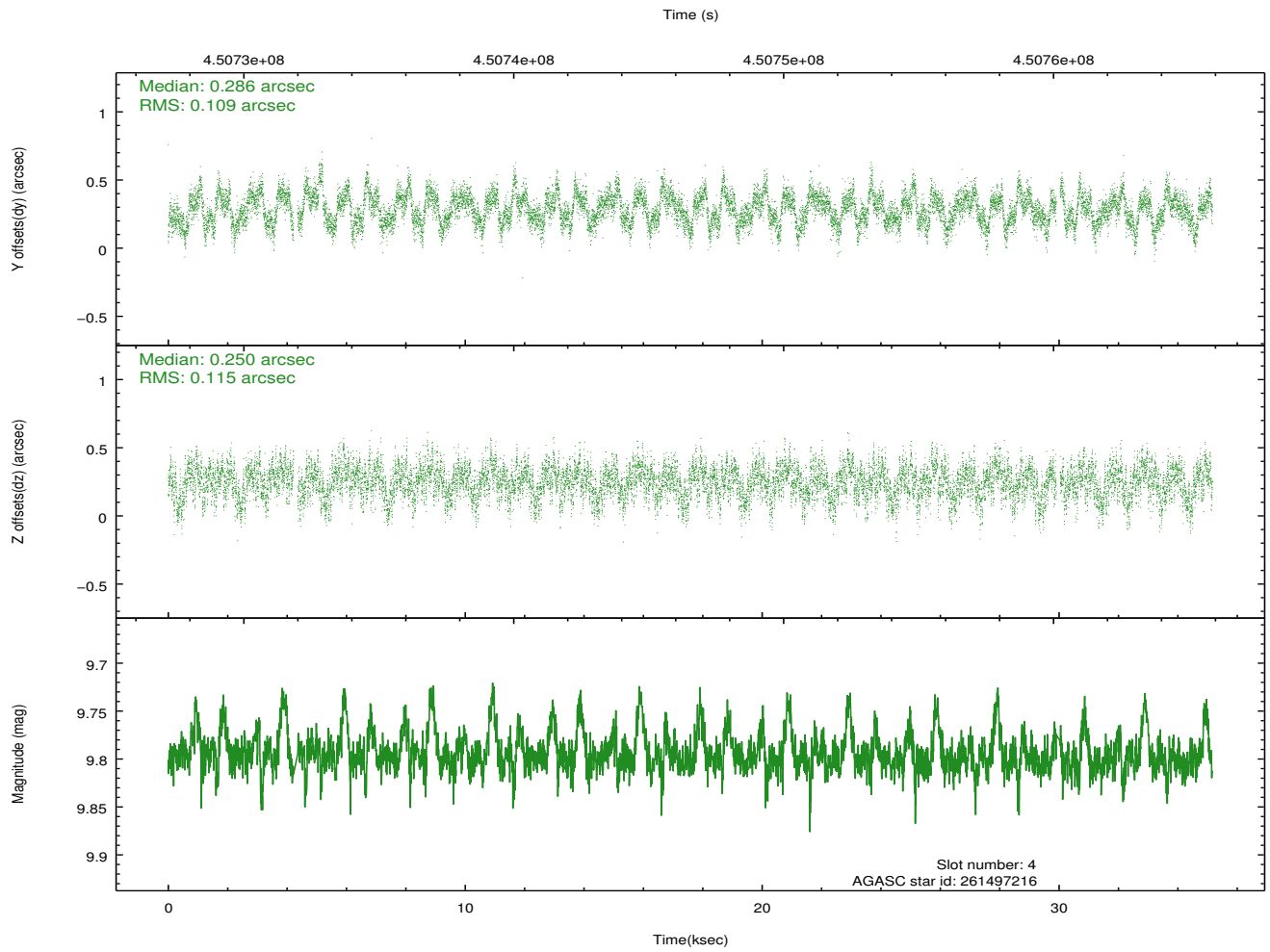
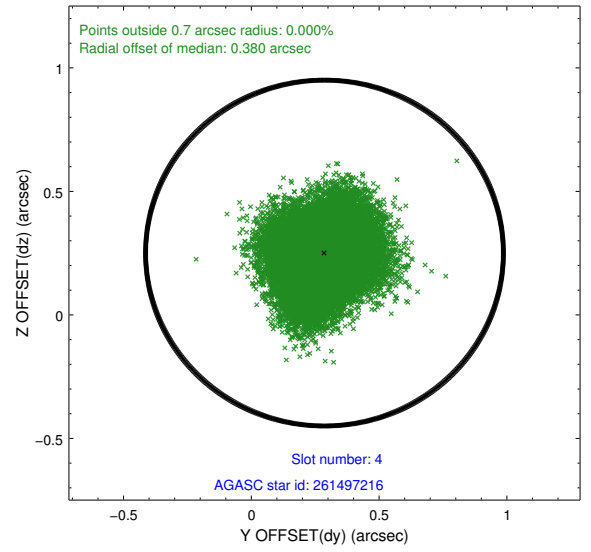
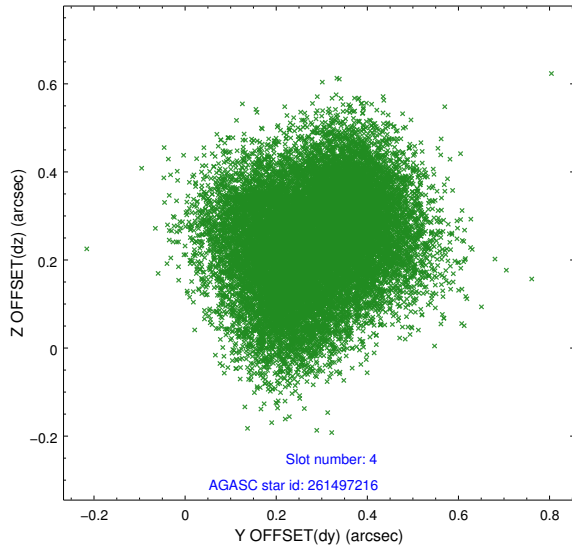
∞

2.4 Star Slots

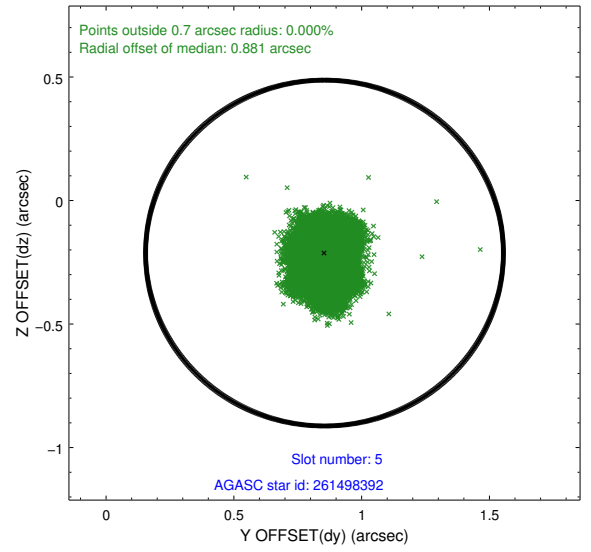
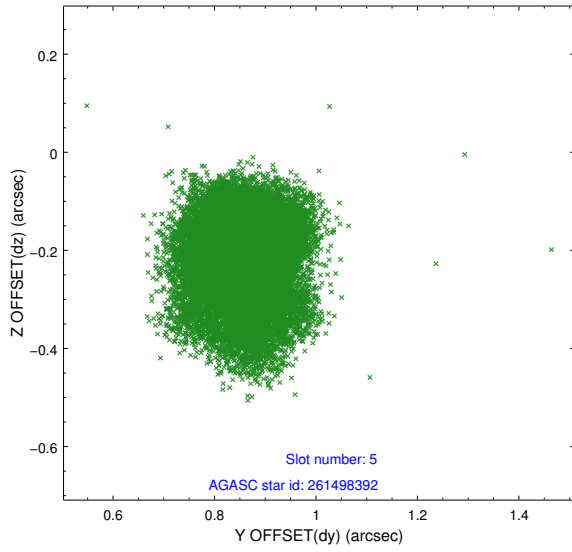
2.4.1 Slot 3



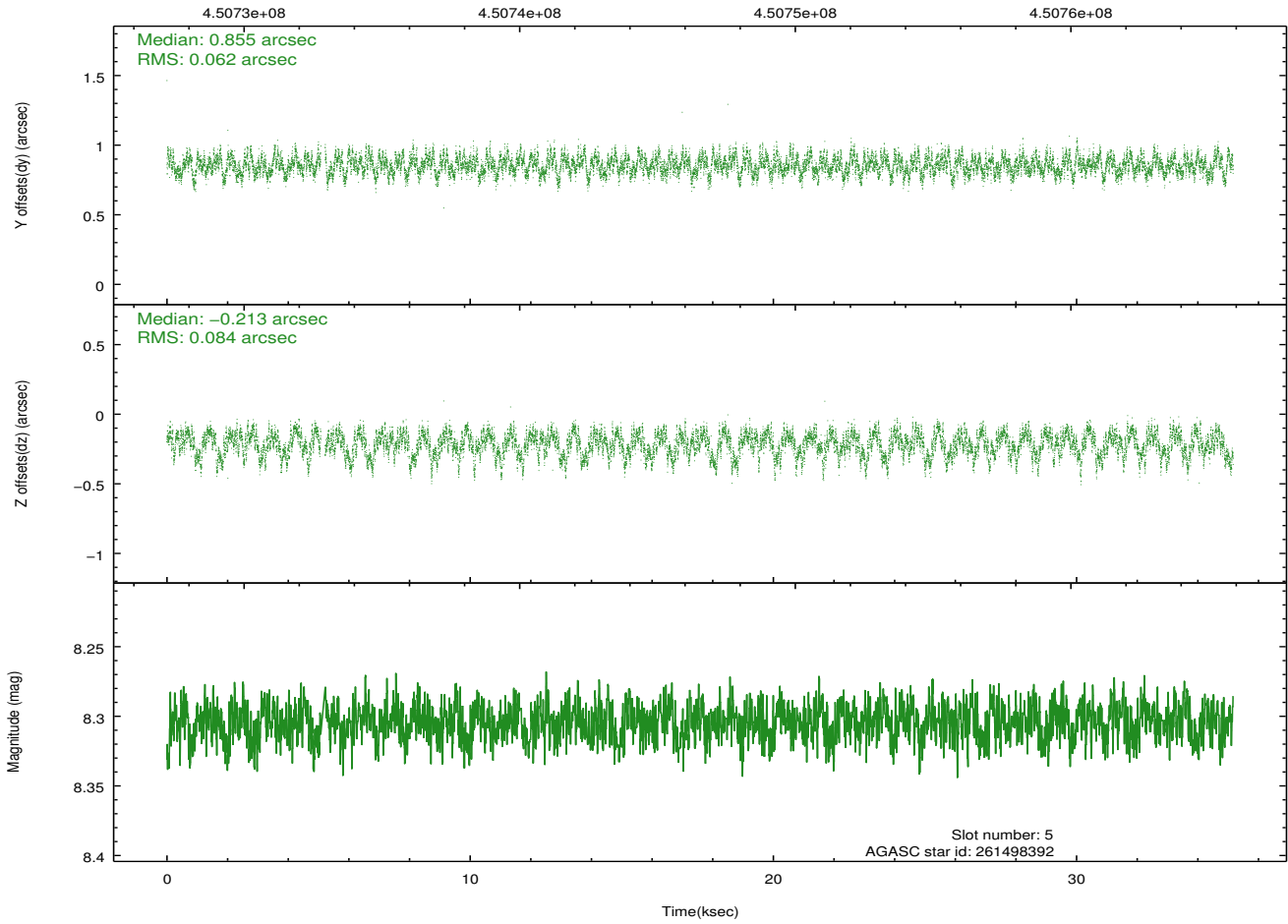
2.4.2 Slot 4



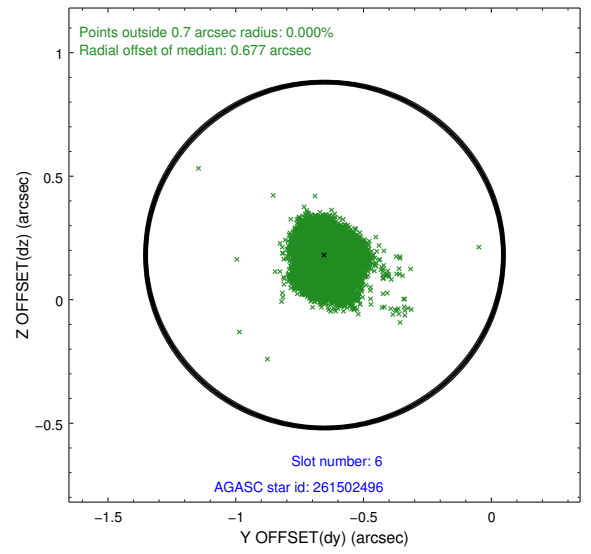
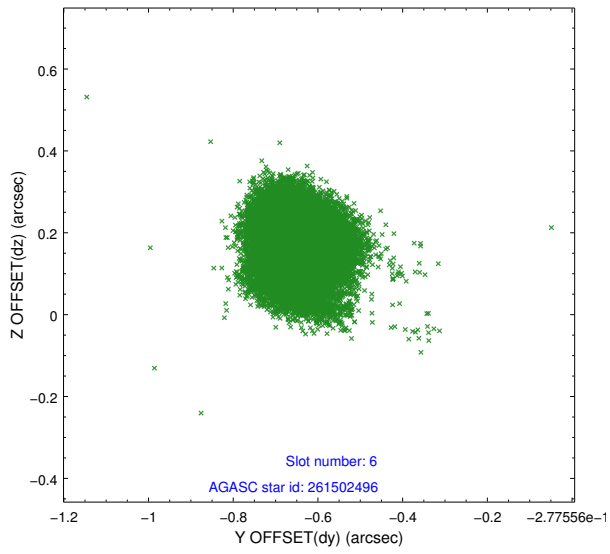
2.4.3 Slot 5



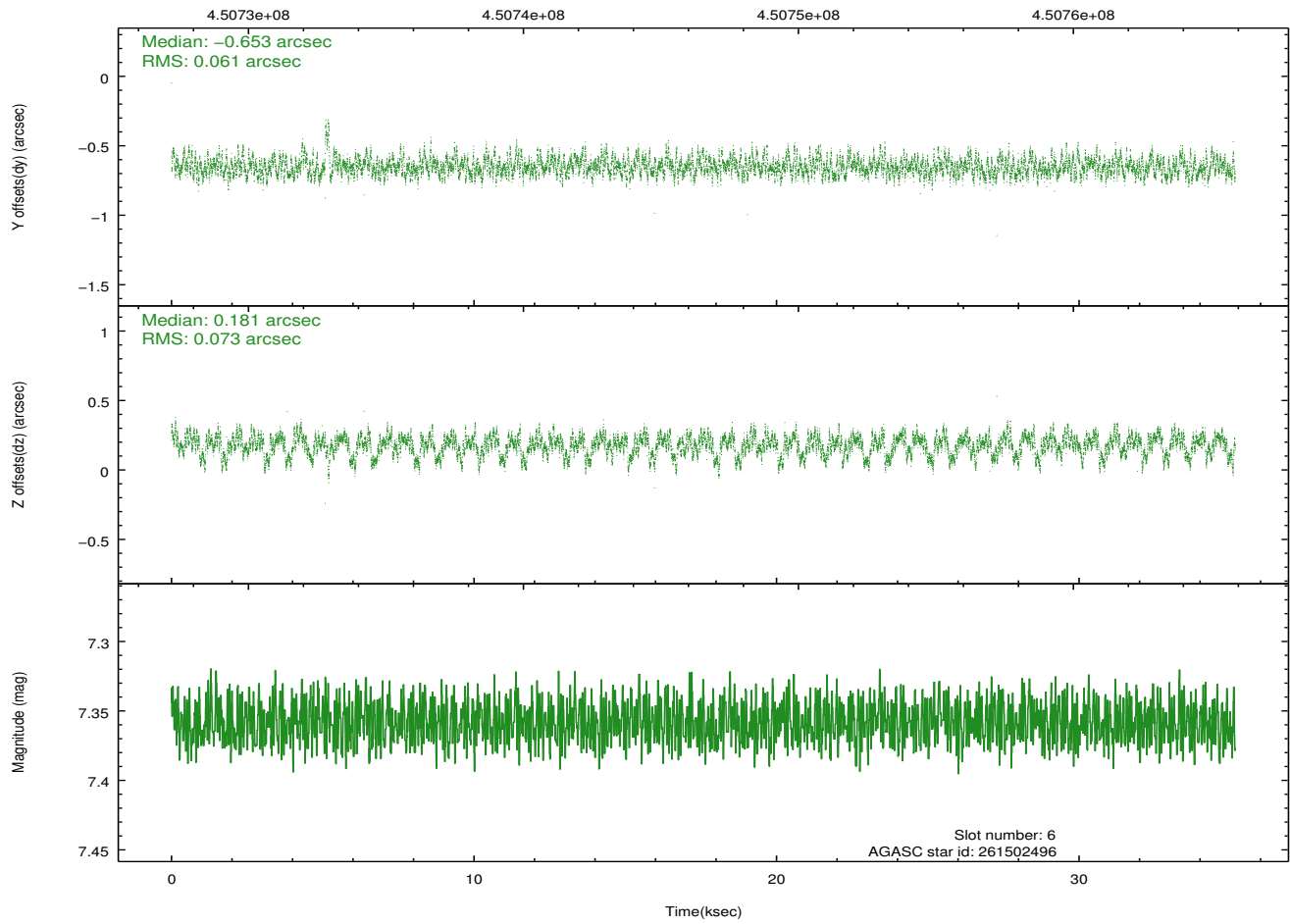
Time (s)



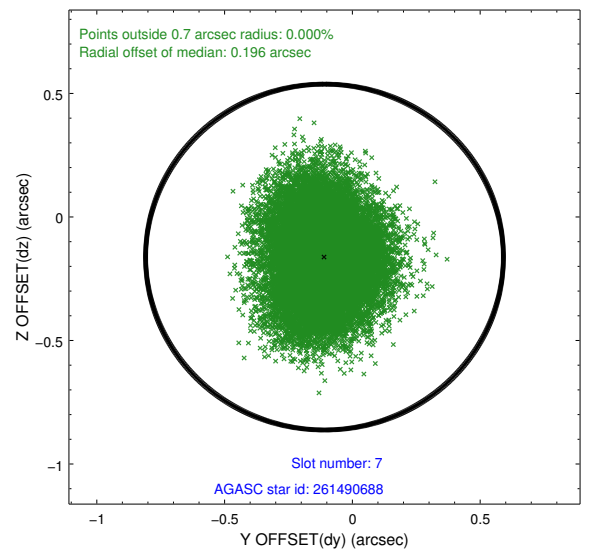
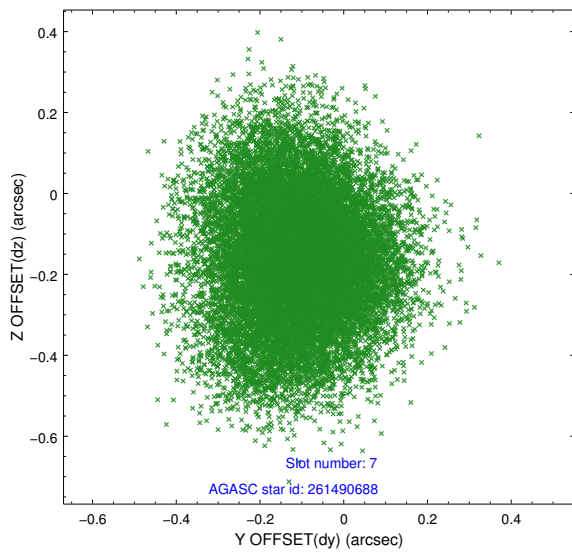
2.4.4 Slot 6



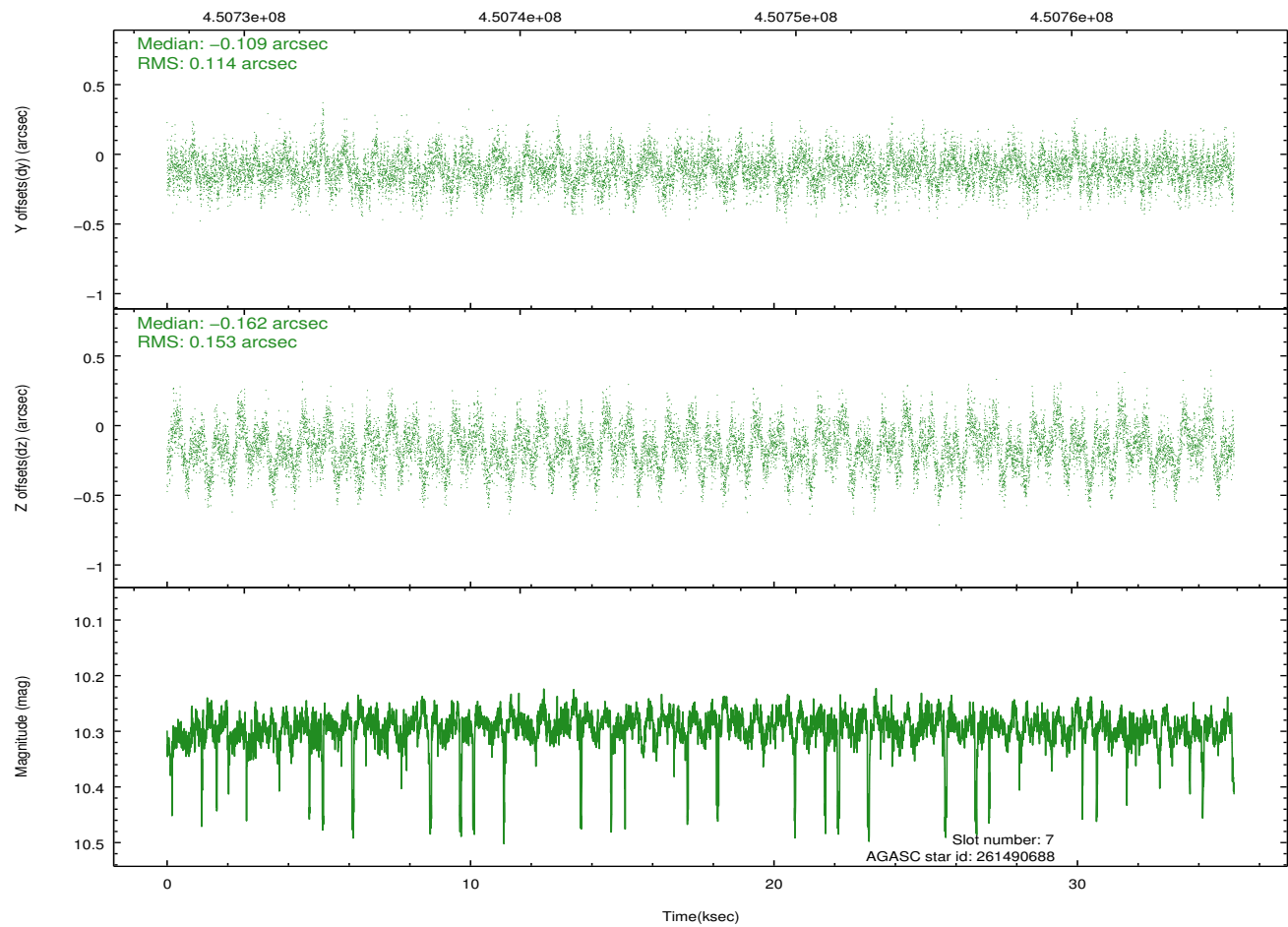
Time (s)



2.4.5 Slot 7

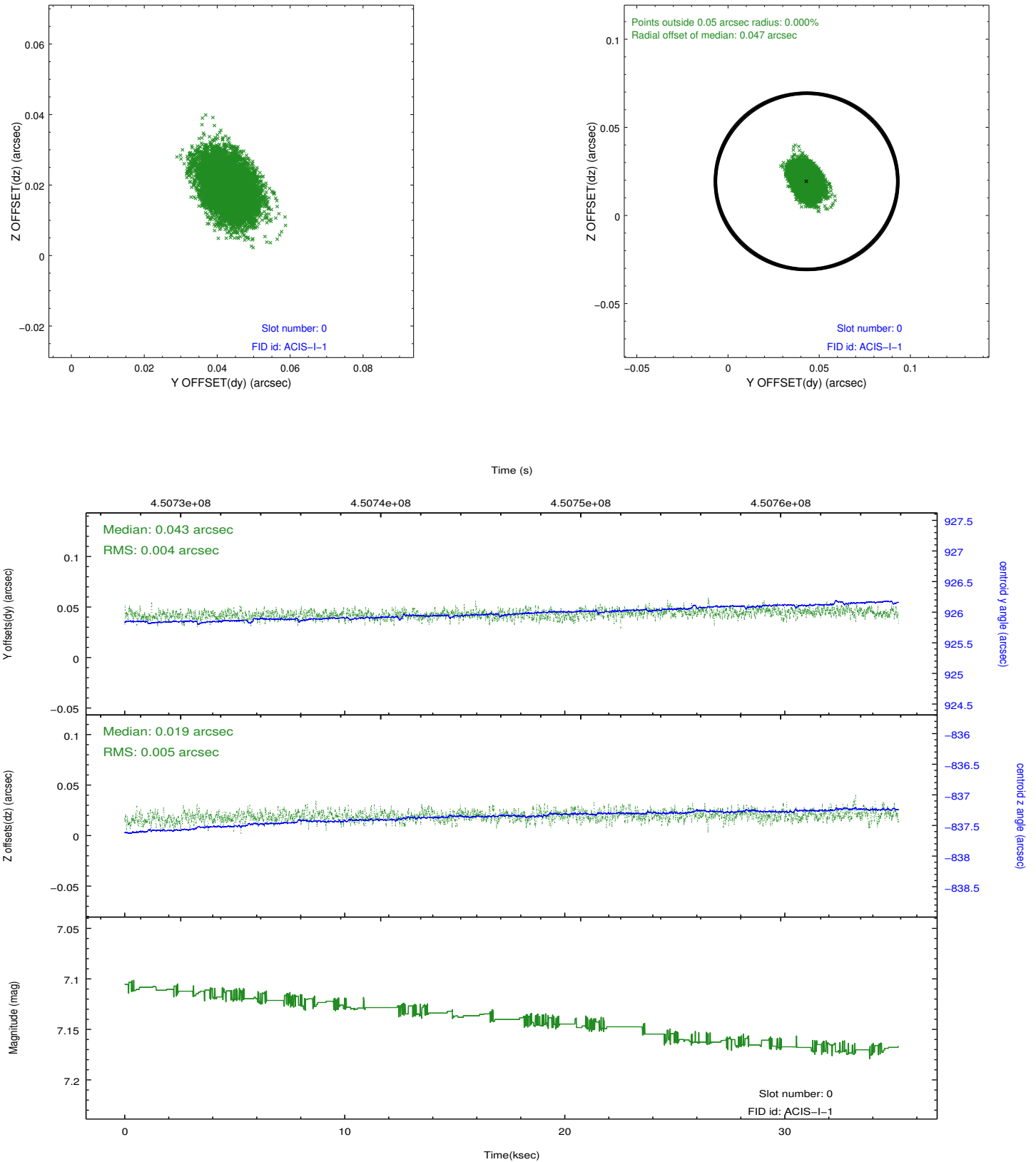


Time (s)

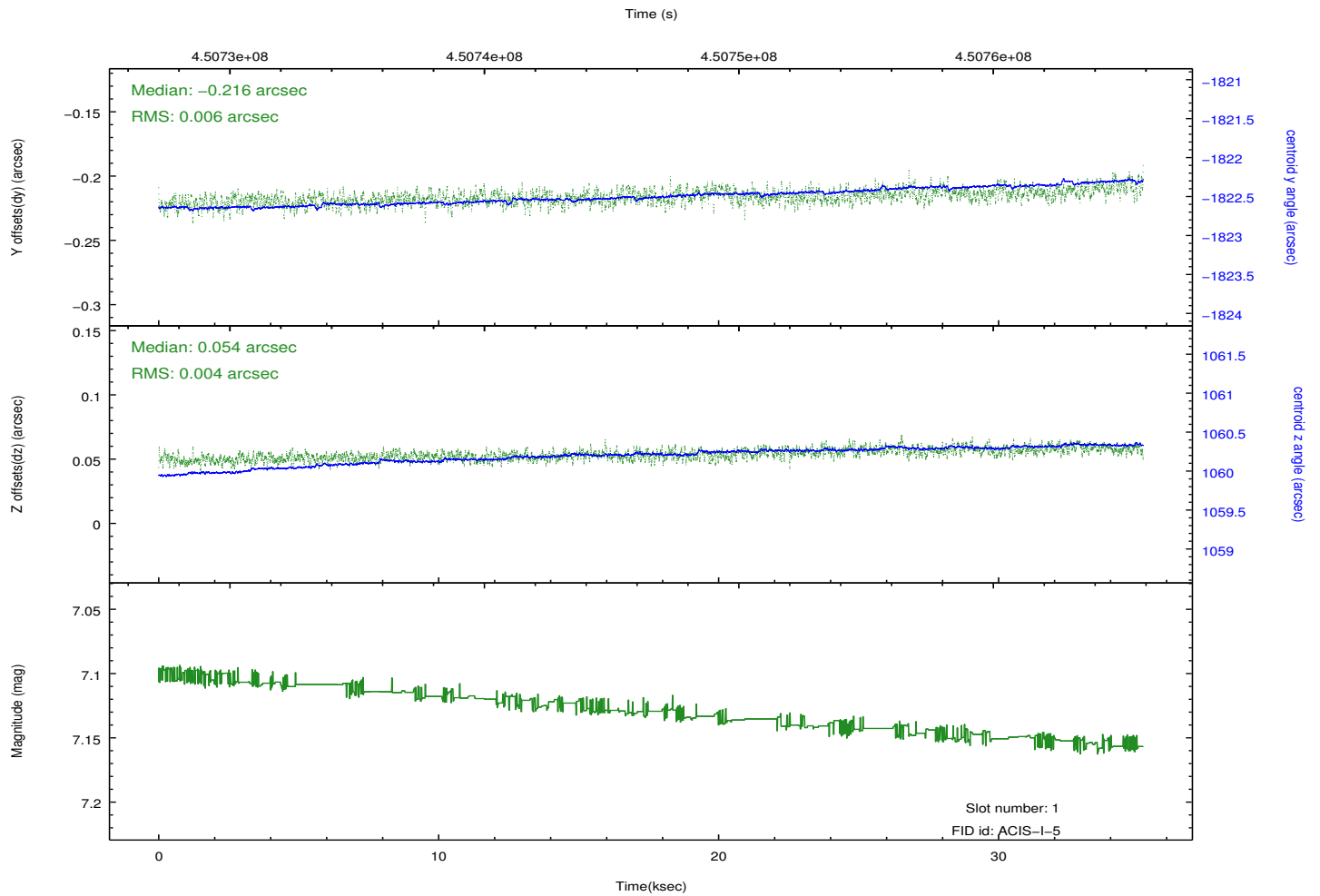
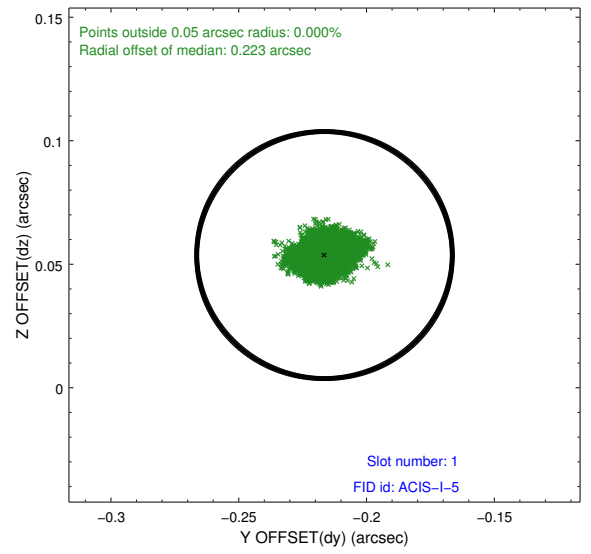
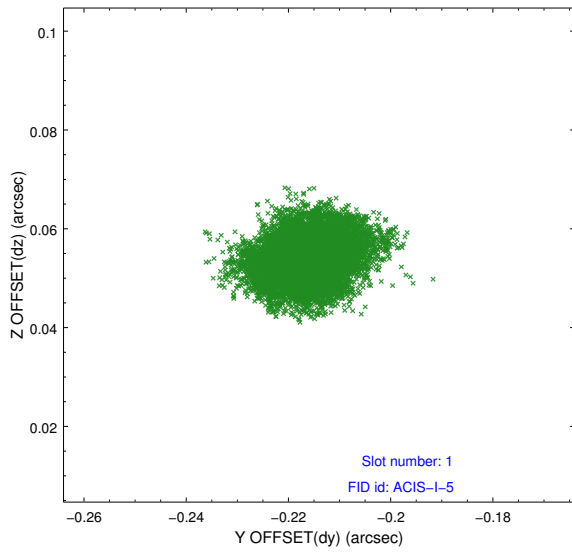


2.5 FID Slots

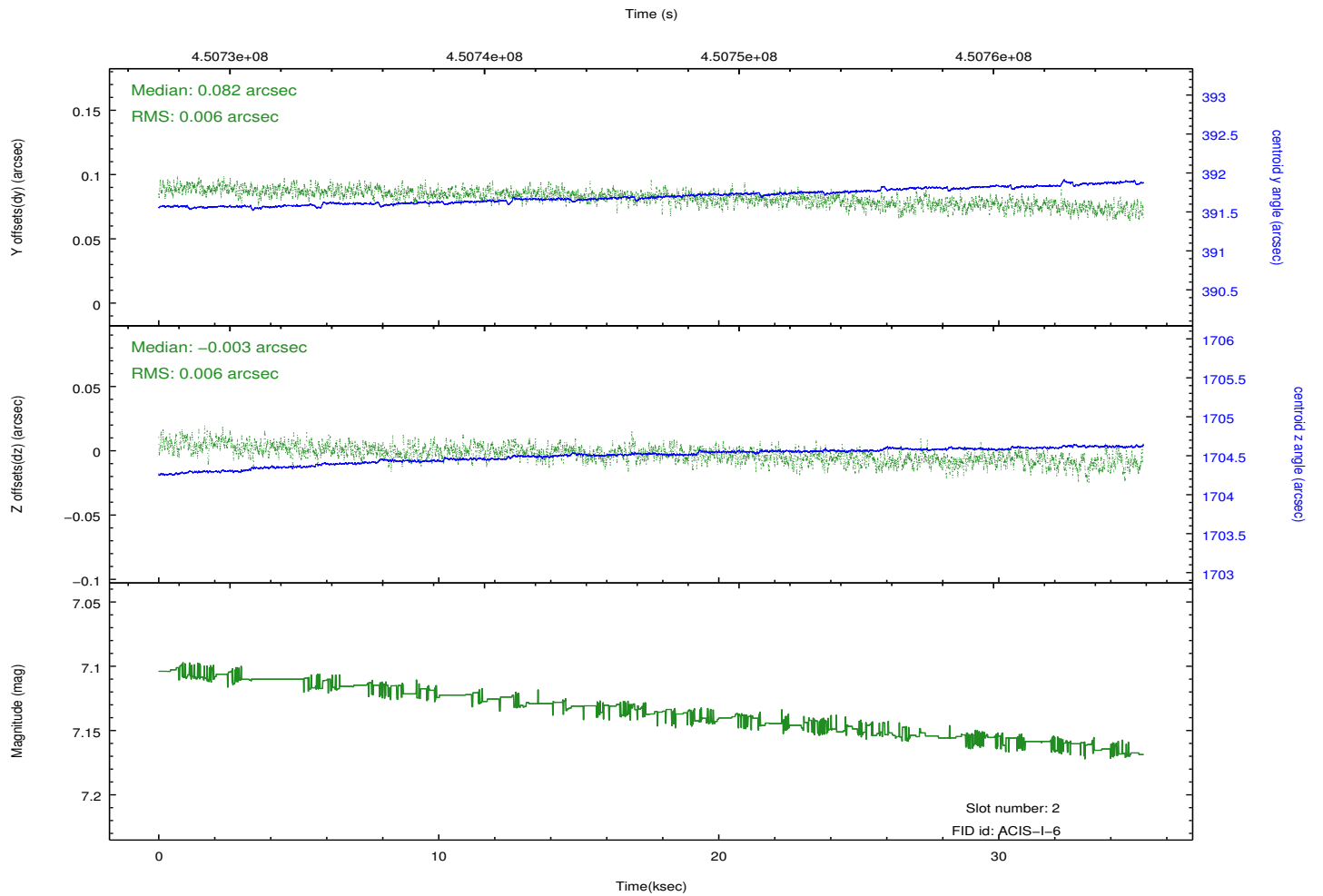
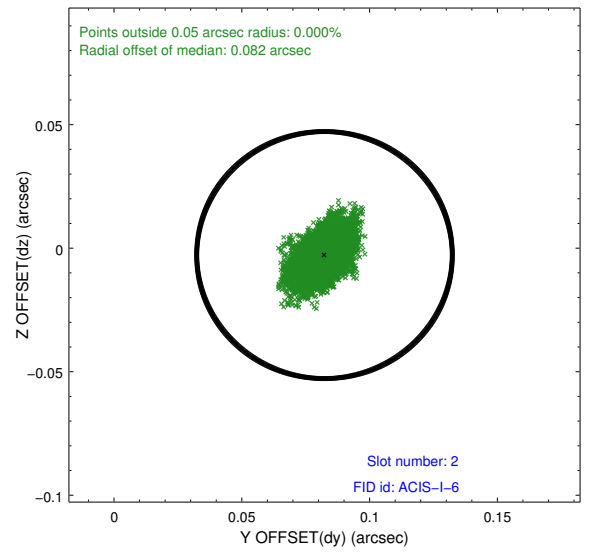
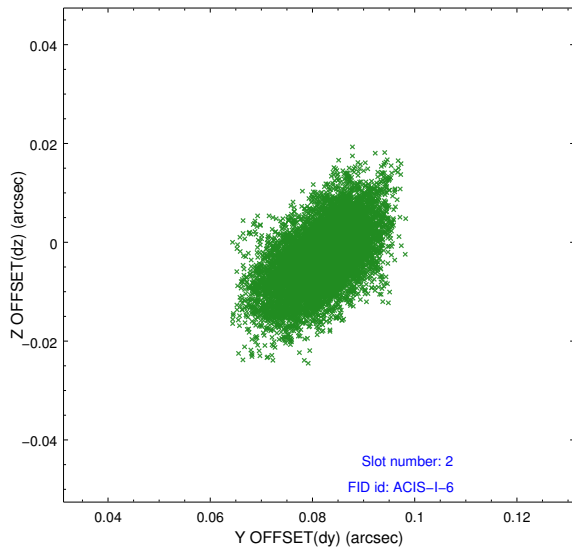
2.5.1 Slot 0



2.5.2 Slot 1



2.5.3 Slot 2



A Summary

A.1 Status

V&V Scientist	Beth Sundheim
V&V Date (YYYY-MM-DD)	2012.04.16
V&V Edition	1
V&V Disposition and Status	OK
V&V Charge Time	34.969599869788

A.2 Comments