

V&V Reference Report

L2 ASCDS Version : 8.4.5

Observation 14445 - L2 Version 1
Chandra X-Ray Center

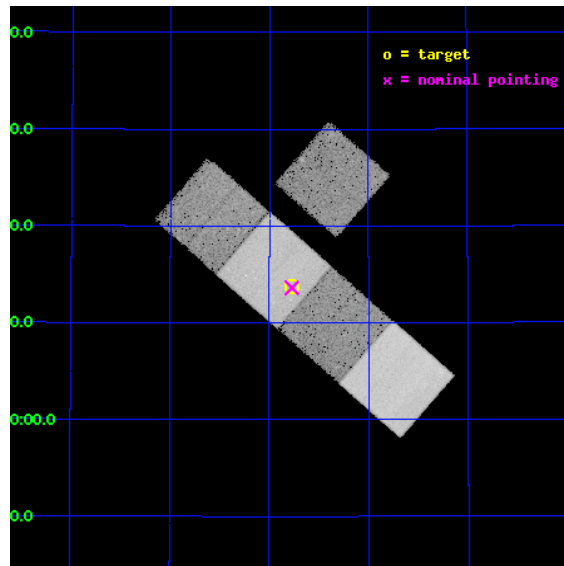
L2 Processing Date : Jun 15 2012

Contents

1	Front	2
2	OBI	3
2.1	OBI	3
2.1.1	Images	3
2.1.2	Bias	3
2.1.3	Parameters	4
2.1.4	Events	4
2.2	Compared Parameters	5
2.3	Aspect	6
2.4	Star Slots	9
2.4.1	Slot 3	9
2.4.2	Slot 4	10
2.4.3	Slot 5	11
2.4.4	Slot 6	12
2.4.5	Slot 7	13
2.5	FID Slots	14
2.5.1	Slot 0	14
2.5.2	Slot 1	15
2.5.3	Slot 2	16
A	Summary	17
A.1	Status	17
A.2	Comments	17

1 Front

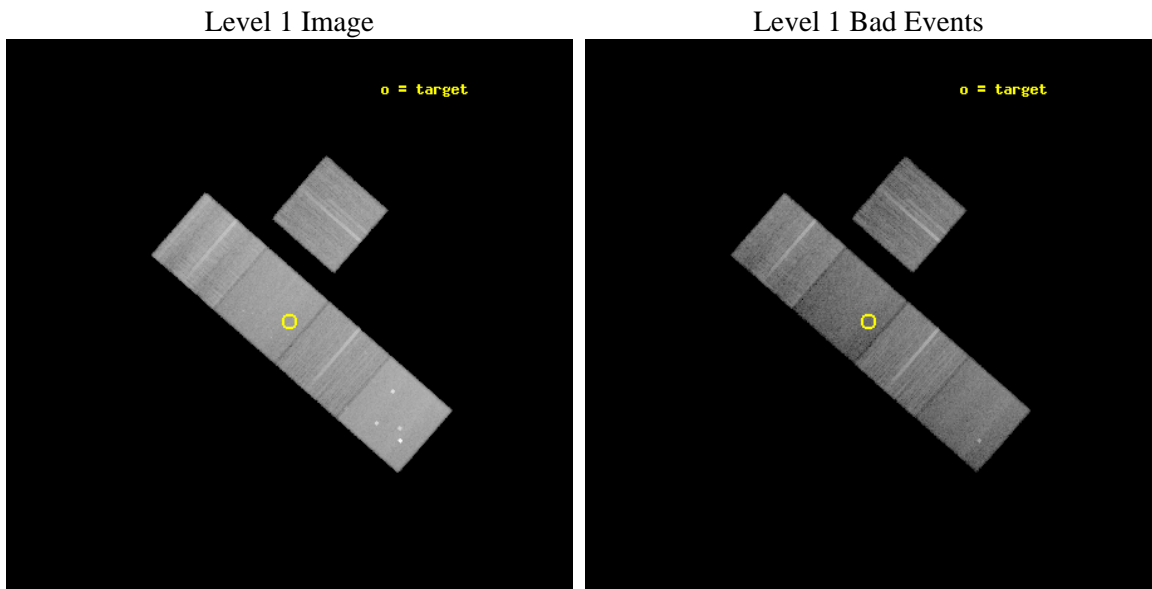
seq_num	501604	Sequence number
obs_id	14445	Observation id
title	Investigating the Emission of Extraordinarily Luminous and Unusual Supernovae	Proposal title
observer	Prof. David Pooley	Principal investigator
object	PTF12dam	Source name
dtcycle	0	
cycle	P	events from which exps? Prim/Second/Both
ra_targ	216.1925	Observer's specified target RA [deg]
dec_targ	46.230083	Observer's specified target Dec [deg]
ra_nom	216.19316568746	Nominal RA [deg]
dec_nom	46.227094604199	Nominal Dec [deg]
roll_nom	221.15614783541	Nominal Roll [deg]
revision	1	Processing version of data
ontime	31062.000238895	Sum of GTIs [s]
livetime	30656.152338262	Livetime [s]
ontime3	31062.000238895	Sum of GTIs [s]
ontime5	31062.000238895	Sum of GTIs [s]
ontime6	31058.859208465	Sum of GTIs [s]
ontime7	31062.000238895	Sum of GTIs [s]
ontime8	31062.000238895	Sum of GTIs [s]
l2events	265253	Number of level 2 events



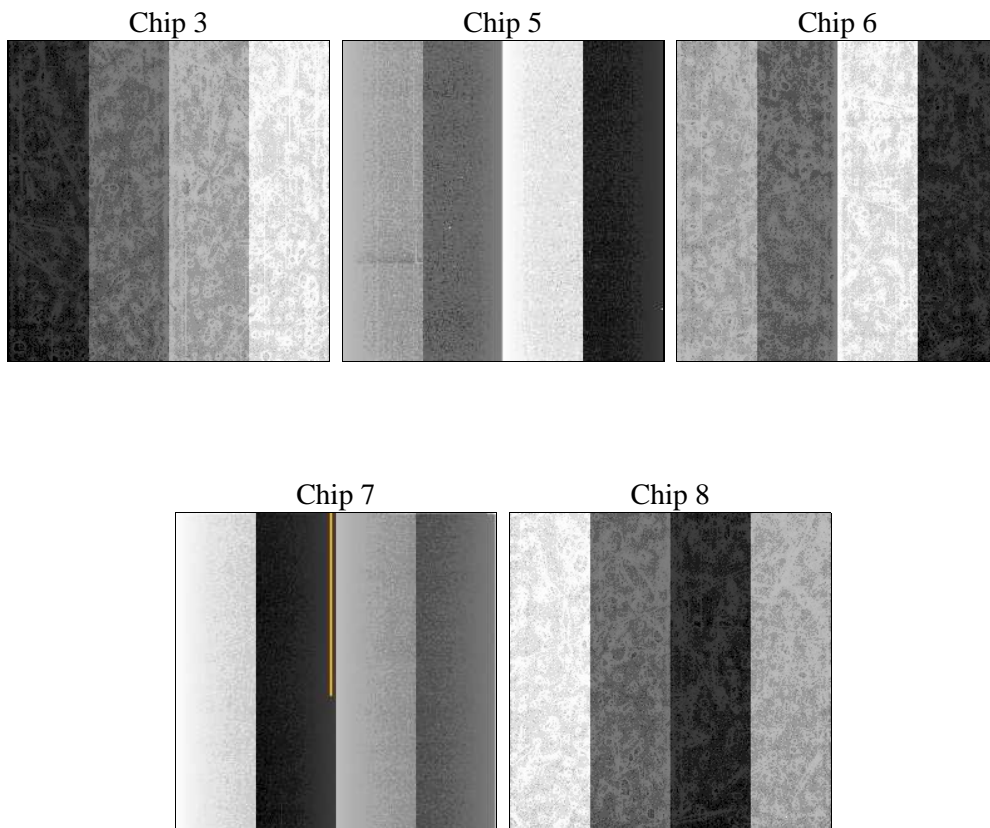
2 OBI

2.1 OBI

2.1.1 Images



2.1.2 Bias



2.1.3 Parameters

obi_num	0	Obi number	sched_exp_time	31000.000000	[s] Scheduled observation exposure time
ascdsver	8.4.5	Processing system revision	ontime	31062.000238895	Sum of GTIs [s]
caldbver	4.4.10	 	ontime3	31062.000238895	Sum of GTIs [s]
date	2012-06-15T15:22:18	Date and time of file creation	ontime5	31062.000238895	Sum of GTIs [s]
revision	1	Processing version of data	ontime6	31058.859208465	Sum of GTIs [s]
			ontime7	31062.000238895	Sum of GTIs [s]
			ontime8	31062.000238895	Sum of GTIs [s]
			l1events	997182	Number of level 1 events

2.1.4 Events

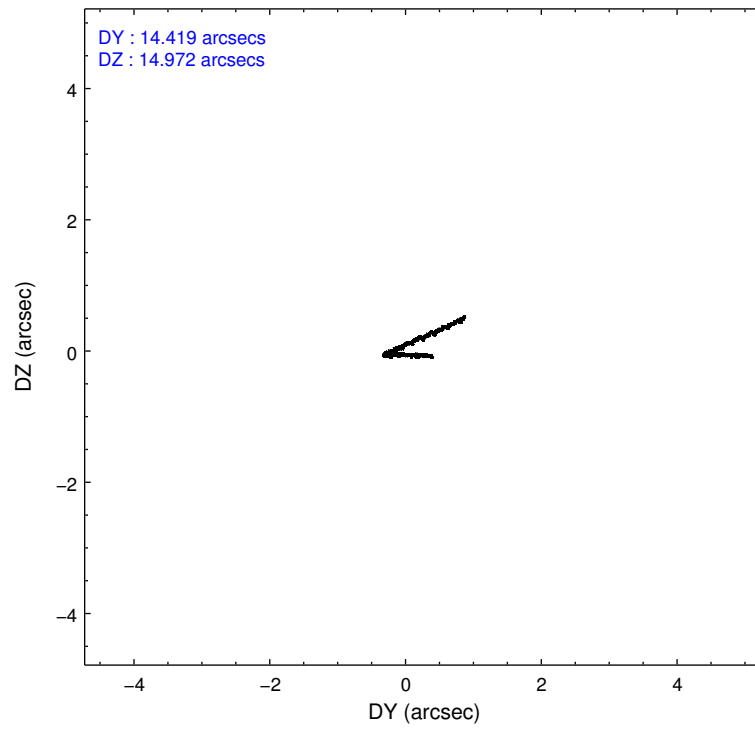
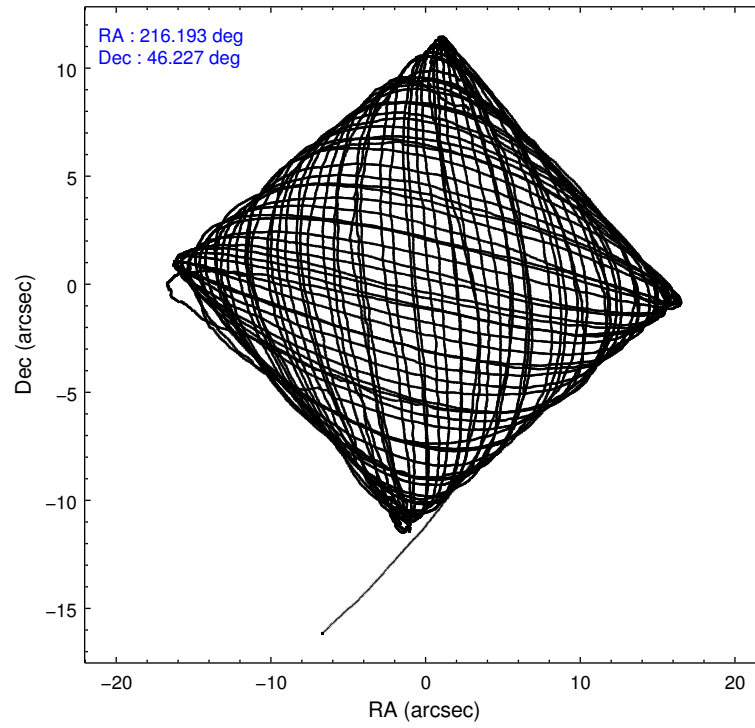
	ccd 3	ccd 5	ccd 6	ccd 7	ccd 8
level 1 events	159410	258586	171265	191700	216221
rejected events	141504	118850	151142	99550	157255
rejected %	88%	45%	88%	51%	72%

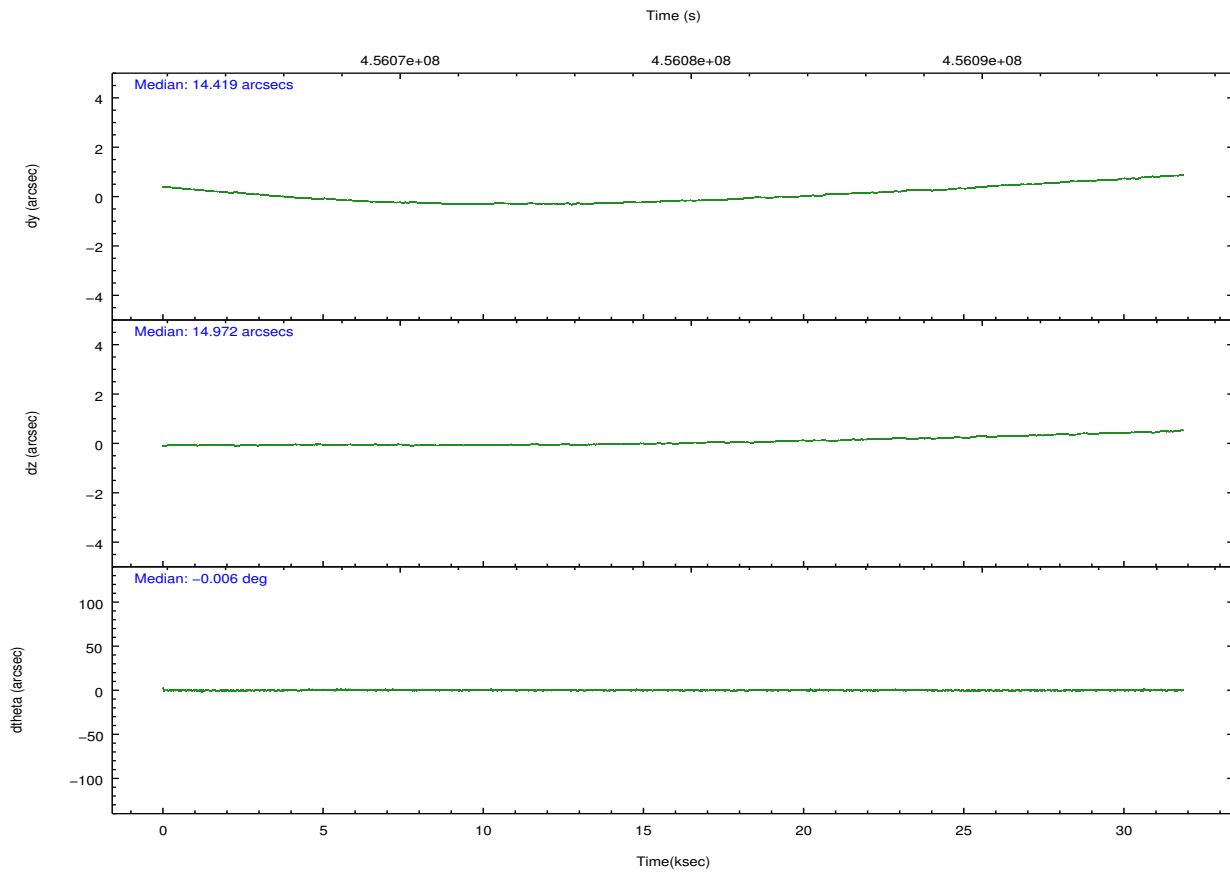
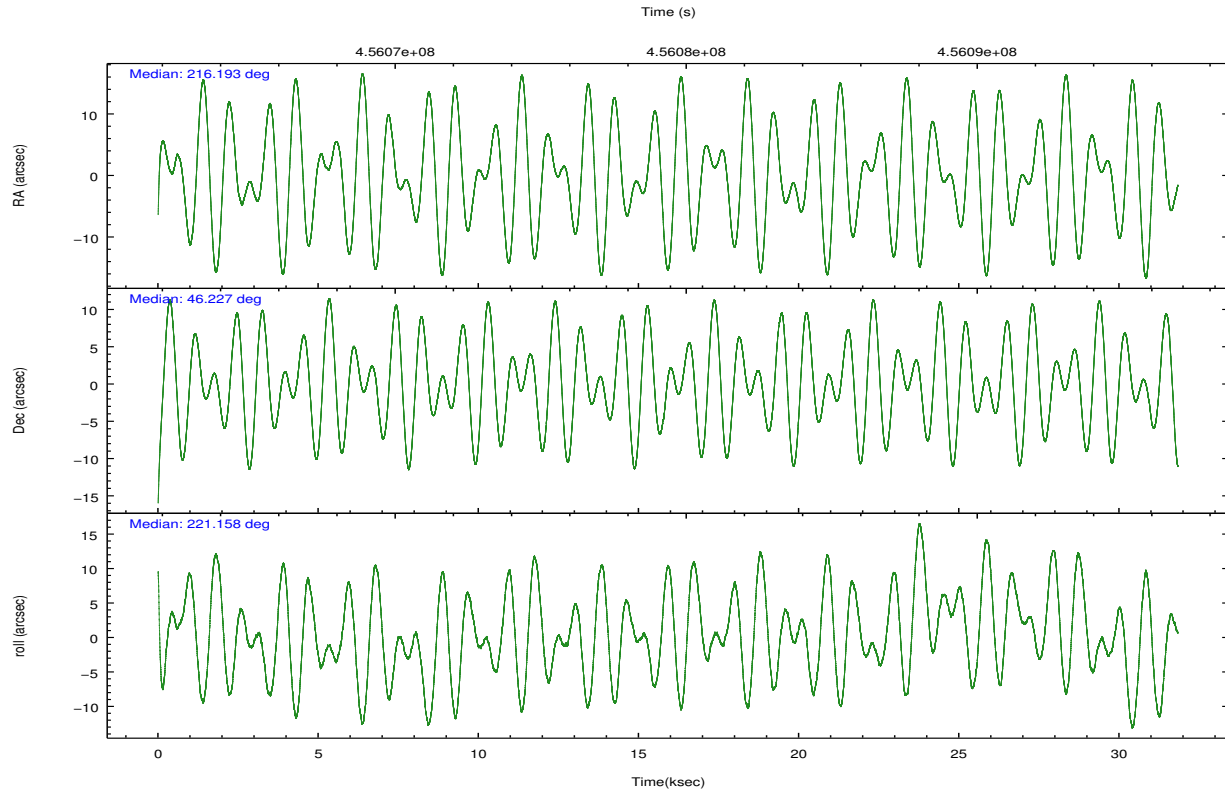
	ccd 3	ccd 5	ccd 6	ccd 7	ccd 8
grade 0 events	6567	19908	7172	9269	16400
	4%	7%	4%	4%	7%
grade 1 events	104	1051	97	283	211
	0%	0%	0%	0%	0%
grade 2 events	3823	43420	4606	19580	14263
	2%	16%	2%	10%	6%
grade 3 events	1874	5306	2072	8223	6370
	1%	2%	1%	4%	2%
grade 4 events	1957	5169	1981	8099	5881
	1%	1%	1%	4%	2%
grade 5 events	7129	19671	7069	20268	10912
	4%	7%	4%	10%	5%
grade 6 events	3689	65939	4294	46993	16056
	2%	25%	2%	24%	7%
grade 7 events	134267	98122	143974	78985	146128
	84%	37%	84%	41%	67%

2.2 Compared Parameters

Parameter	Planned	Actual	Parameter	Planned	Actual
Instrument	ACIS	ACIS	Obspar format version number	7	7
Detector	ACIS-35678	ACIS-35678	Obspar file type	PREDICTED	ACTUAL
Grating	NONE	NONE	Obspar update status	NONE	UPDATED
Data mode	VFAINT	VFAINT	CCD I0 on	N	N
Observation mode	POINTING	POINTING	CCD I1 on	N	N
[deg] Pointing RA	216.205423	216.1931656874555	CCD I2 on	N	N
[deg] Pointing Dec	46.253077	46.22709460419912	CCD I3 on	O1	Y
[deg] Pointing Roll	220.990664	221.1561478354143	CCD S0 on	N	N
[mm] SIM focus pos	-0.684267	-0.6828225247311905	CCD S1 on	Y	Y
[mm] SIM defocus	0	0.001444936568705701	CCD S2 on	Y	Y
[mm] SIM translation stage pos	-190.132523	-190.1400660498719	CCD S3 on	Y	Y
[mm] SIM translation stage offset	0	0.00754346686406393	CCD S4 on	Y	Y
[s] Observation start time (MET)	456064297.184000	456062641.90032	CCD S5 on	N	N
Observation start date	2012-06-14T12:30:31	2012-06-14T12:04:01	Number of optional ACIS chips dropped	0	0
[s] Observation end time (MET)	456095297.184000	456096065.6146	On-chip summing requested	N	N
Observation end date	2012-06-14T21:07:11	2012-06-14T21:21:05	Subarray requested	NONE	NONE
Read mode	TIMED	TIMED	Alternating exposures requested	N	N
			[s] Primary exposure time	0.000000	3.1

2.3 Aspect



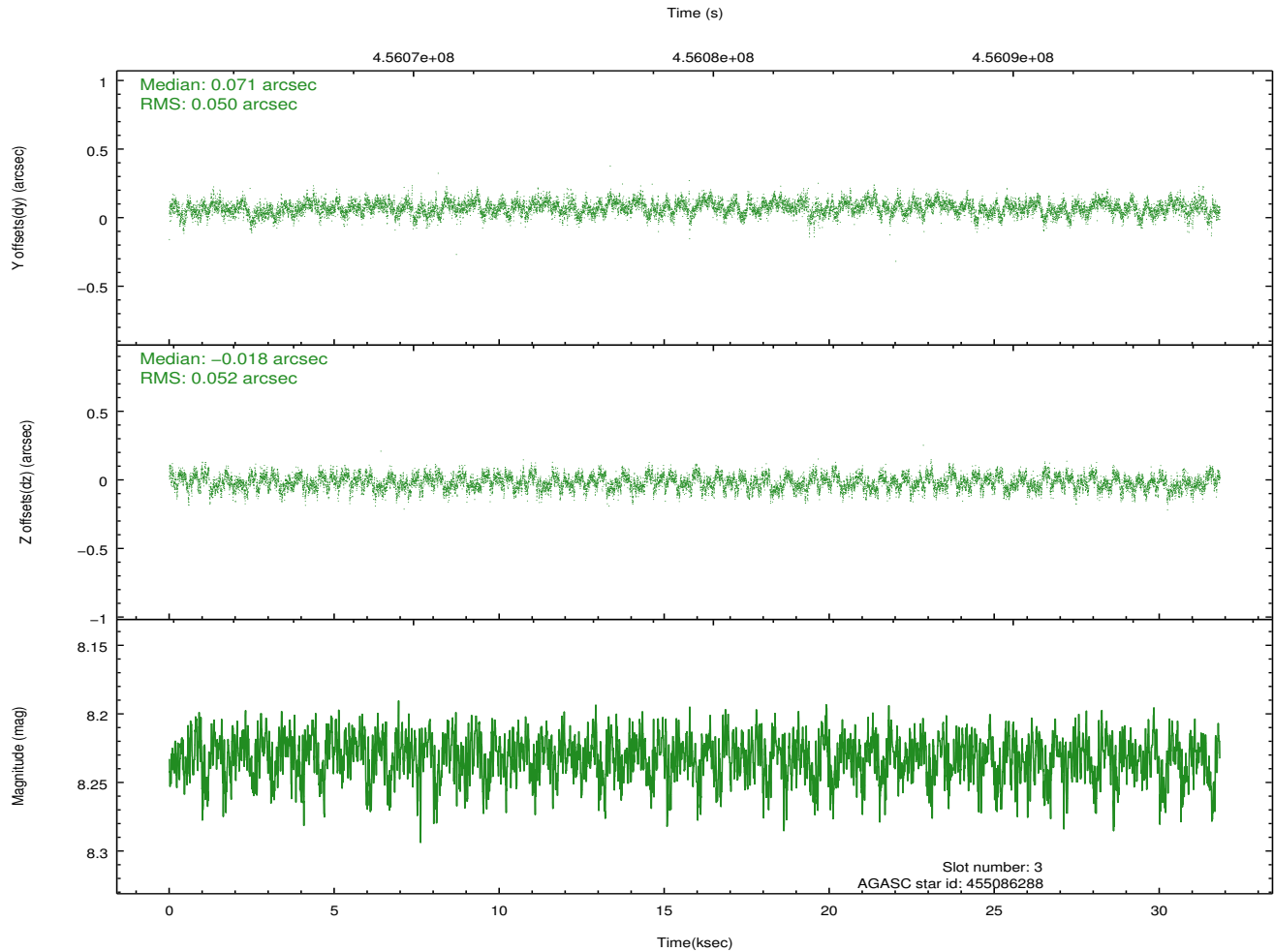
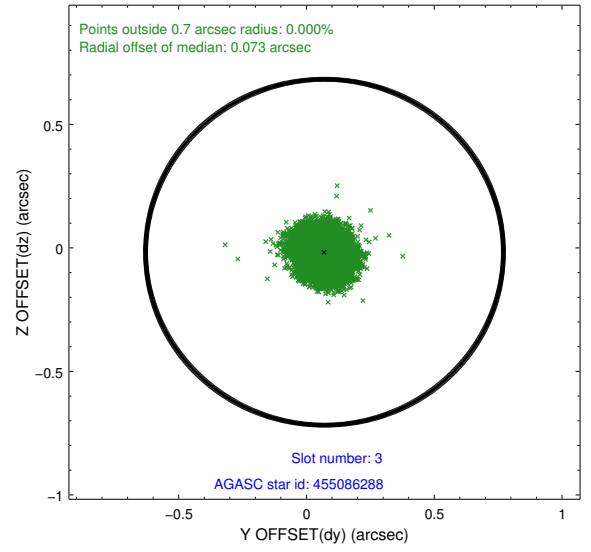
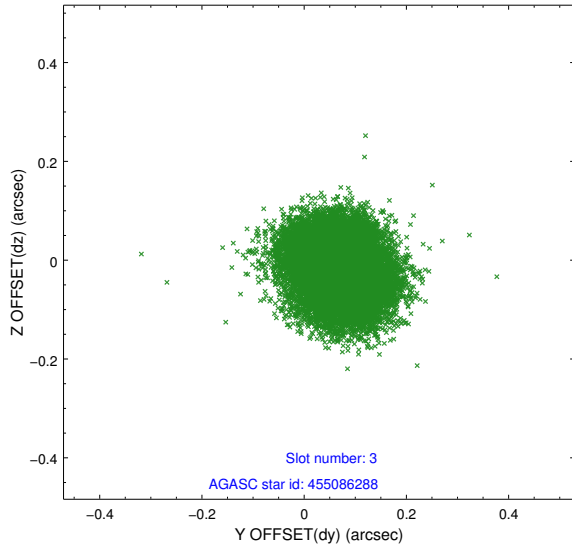


Slot Statistics

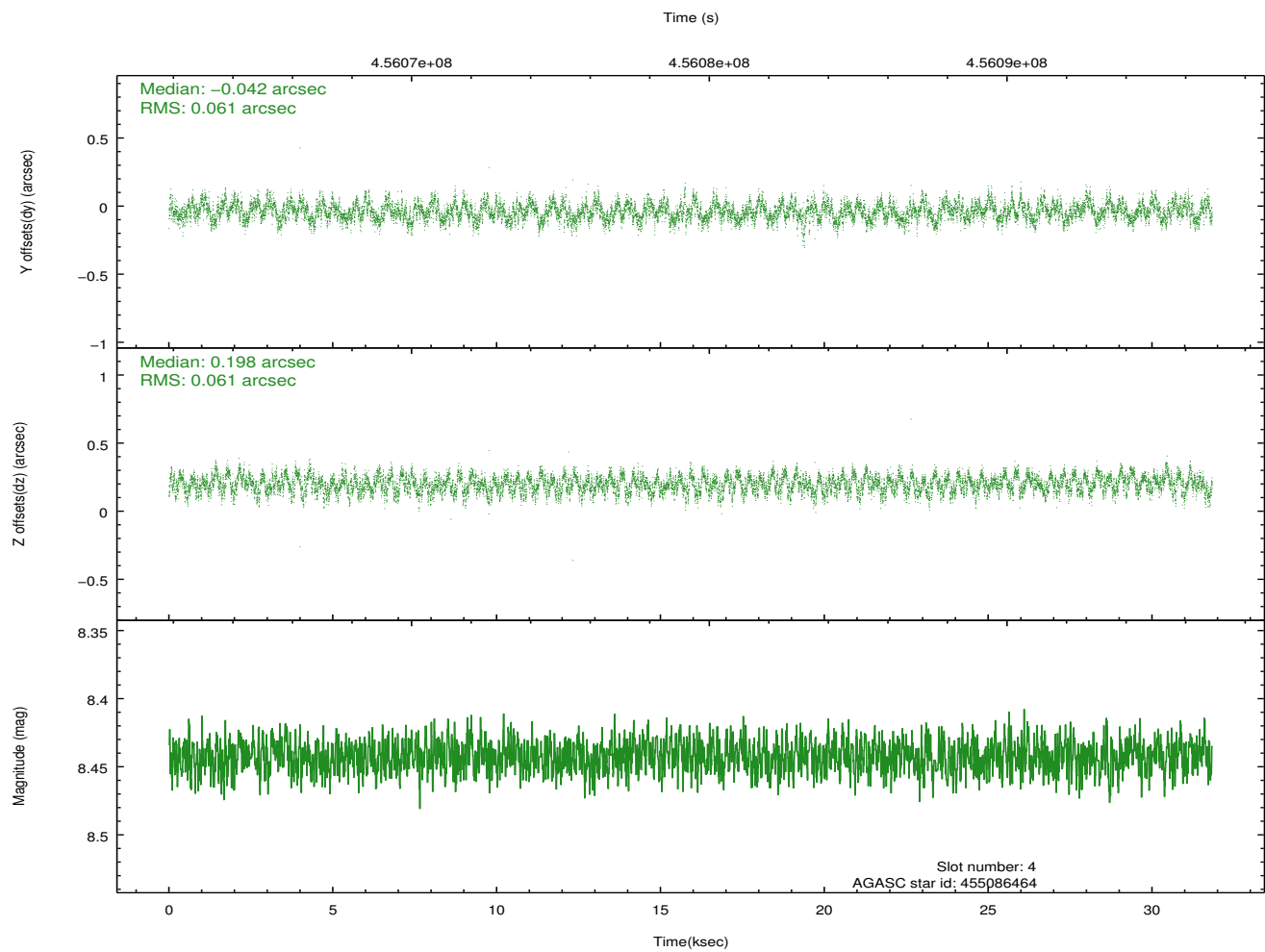
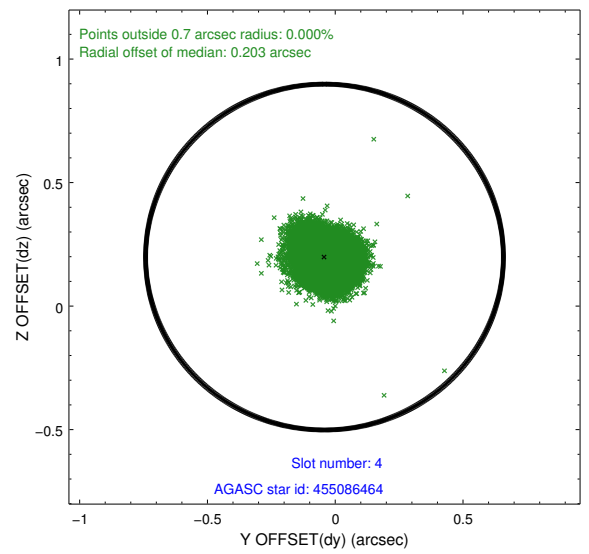
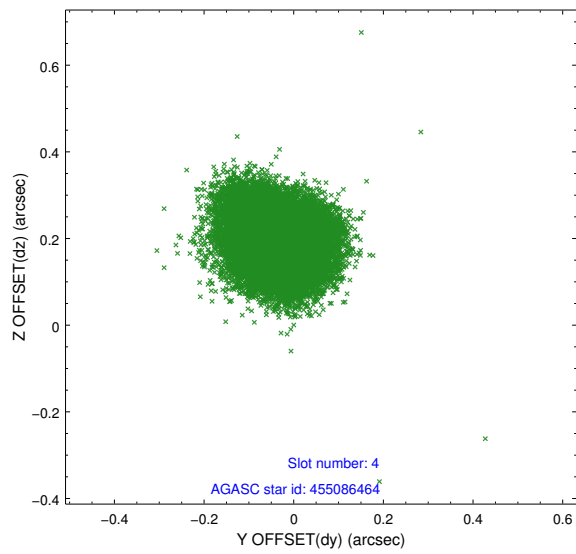
slot	status	id	mag	n_pts	med_dy	med_dz	dr1	dr2	ra	dec	mean_y	mean_z
0	FID	ACIS-S-1	7.01	7764	0.024	-0.033	0.013	0.023	0.000000	0.000000	928.61	-1732.09
1	FID	ACIS-S-4	7.02	7765	0.199	0.014	0.010	0.023	0.000000	0.000000	2146.20	172.07
2	FID	ACIS-S-5	7.05	7765	-0.252	0.030	0.017	0.031	0.000000	0.000000	-1820.47	165.69
3	GUIDE	455086288	8.23	15527	0.071	-0.018	0.078	0.122	215.702797	46.116120	1268.18	-453.19
4	GUIDE	455086464	8.44	15525	-0.042	0.198	0.093	0.144	216.724017	46.613356	-1820.78	-141.27
5	GUIDE	455086552	9.68	15478	0.063	-0.165	0.156	0.241	215.917824	45.938415	1286.17	384.39
6	GUIDE	455089024	8.07	15526	0.105	-0.027	0.066	0.109	216.032003	46.769703	-895.67	-1685.69
7	GUIDE	455083528	8.69	15515	-0.188	0.011	0.087	0.154	217.473880	46.208869	-2297.46	2174.40

2.4 Star Slots

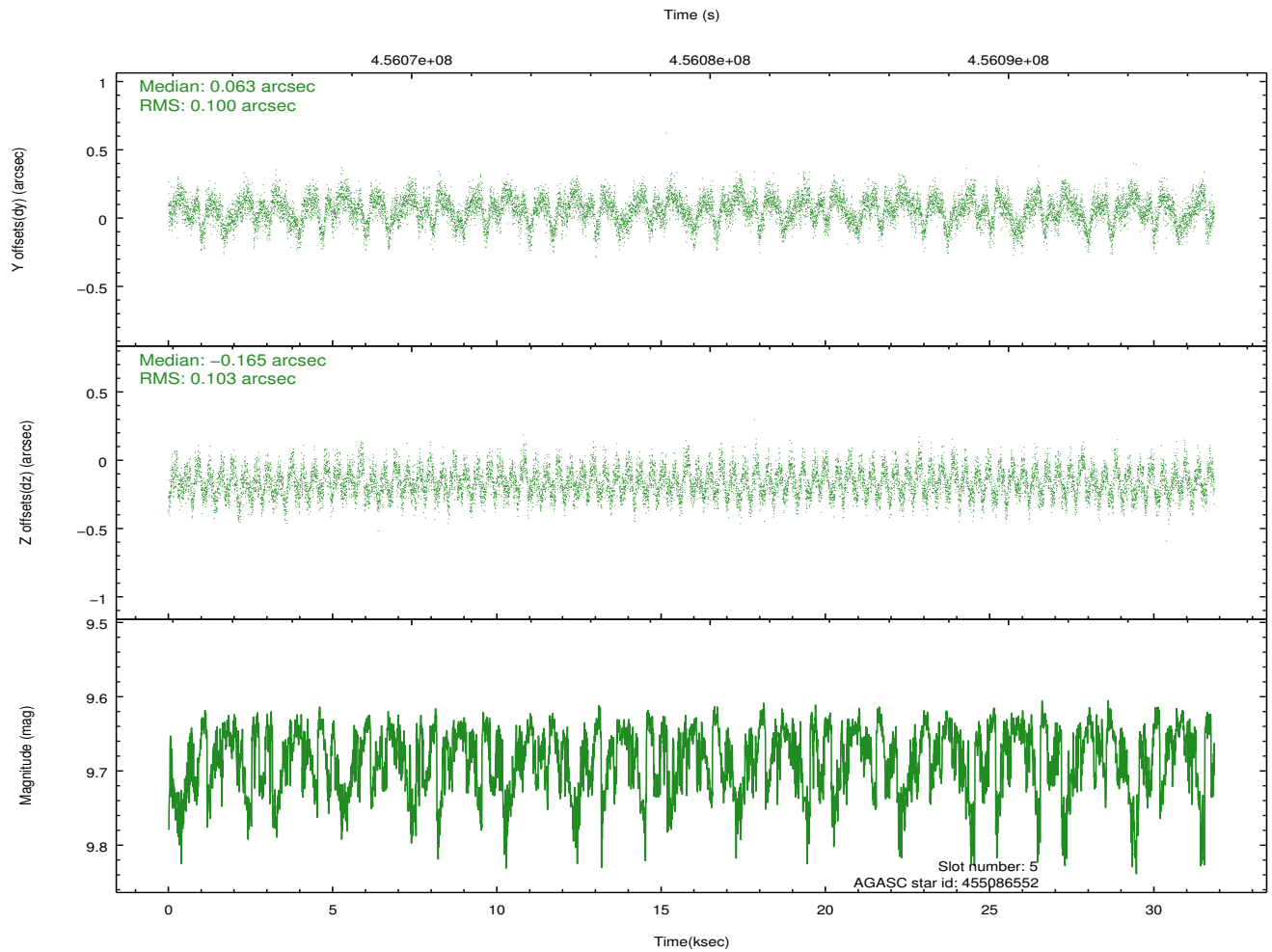
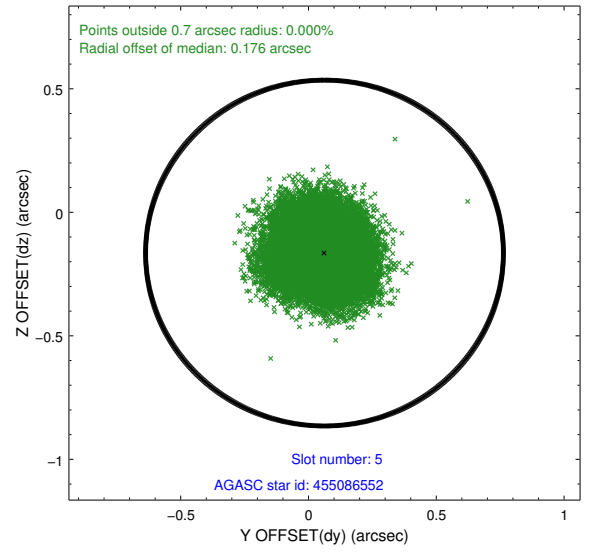
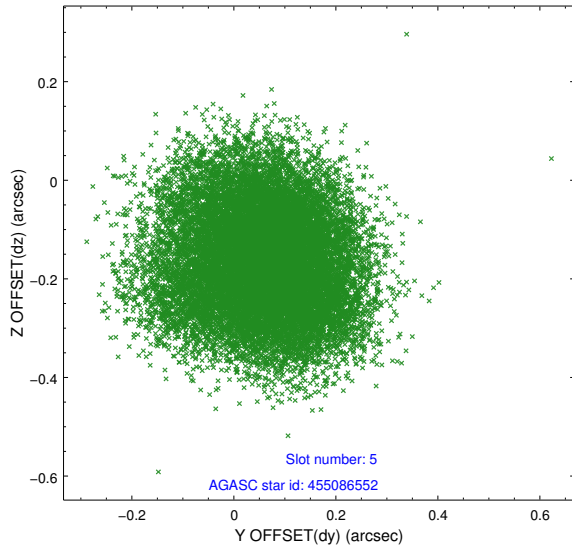
2.4.1 Slot 3



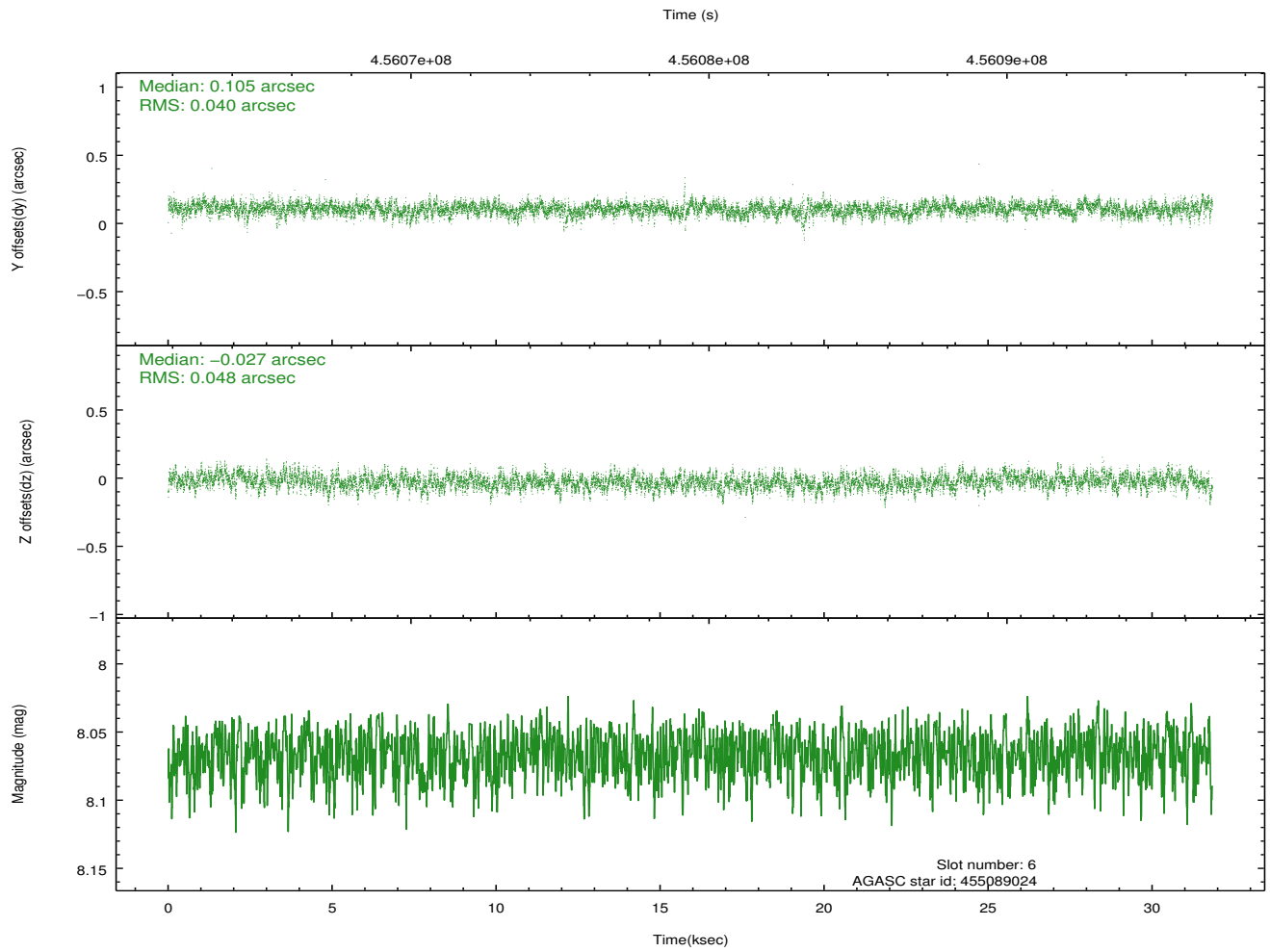
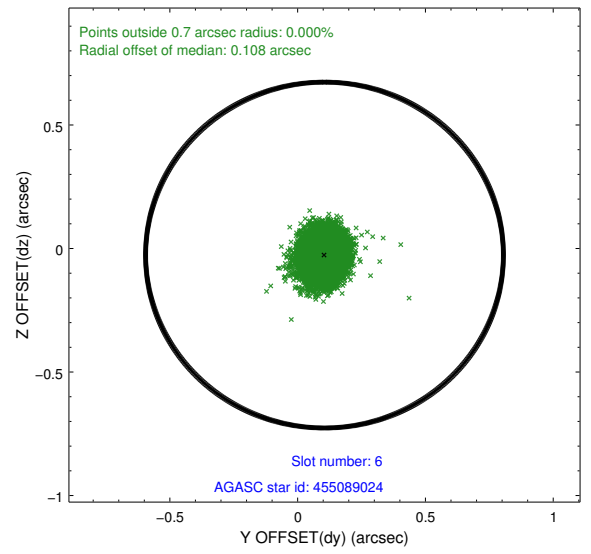
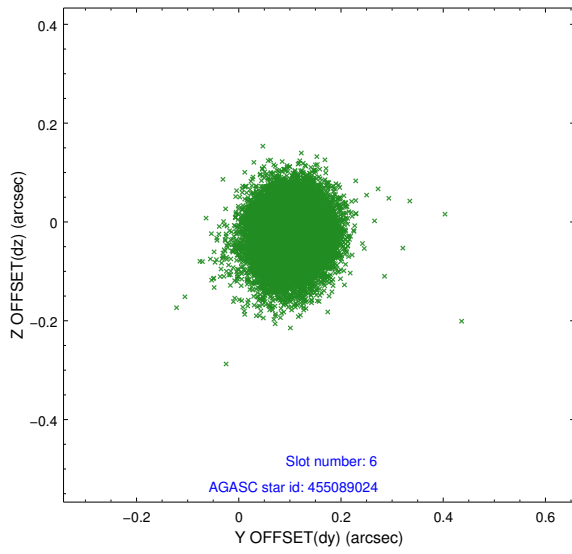
2.4.2 Slot 4



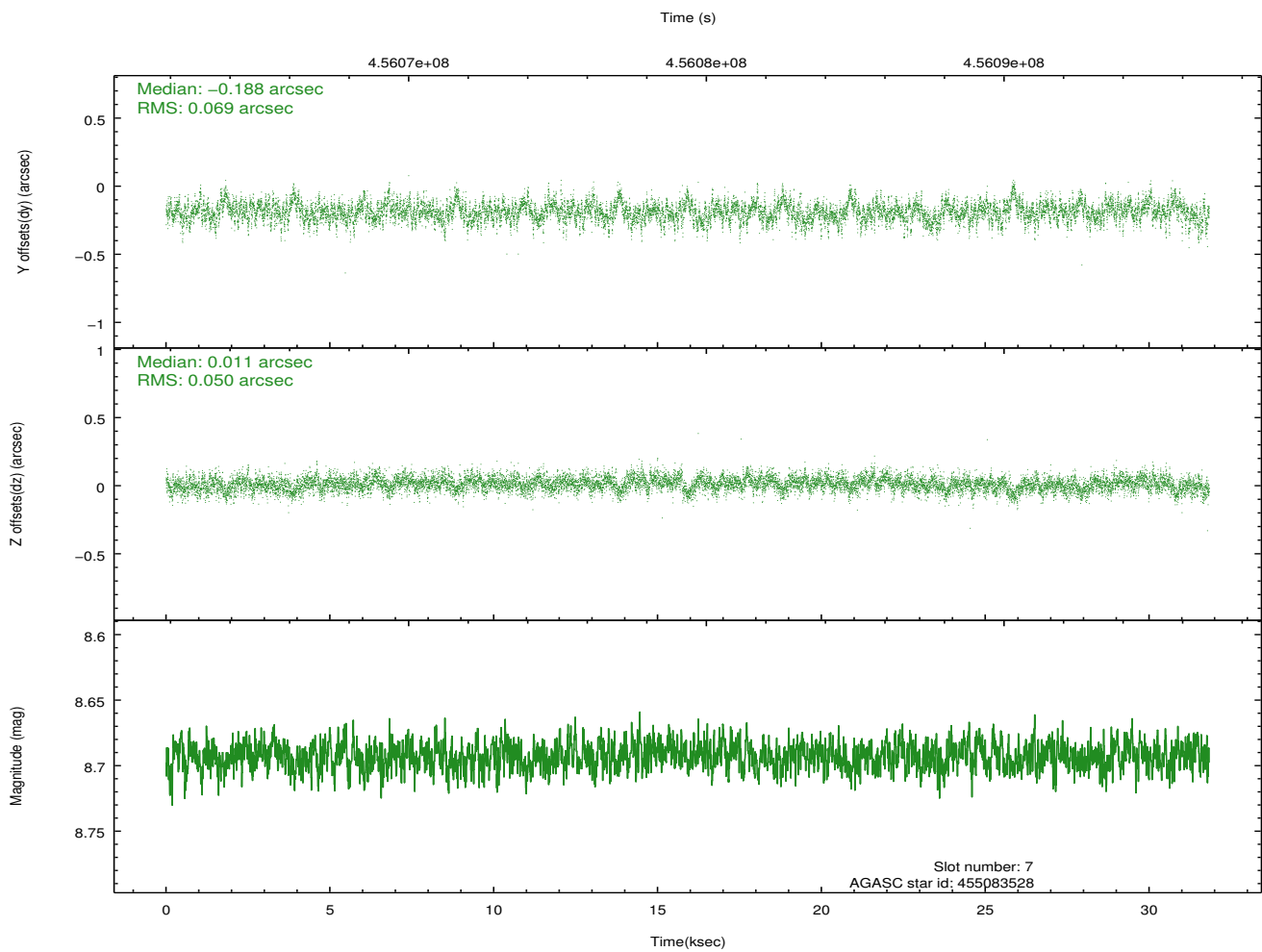
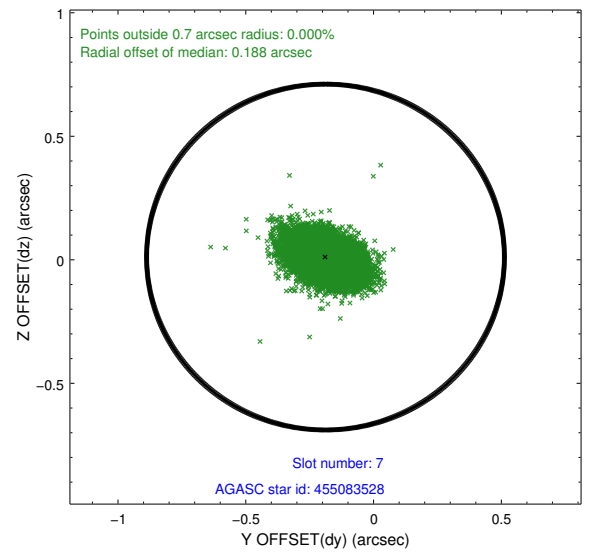
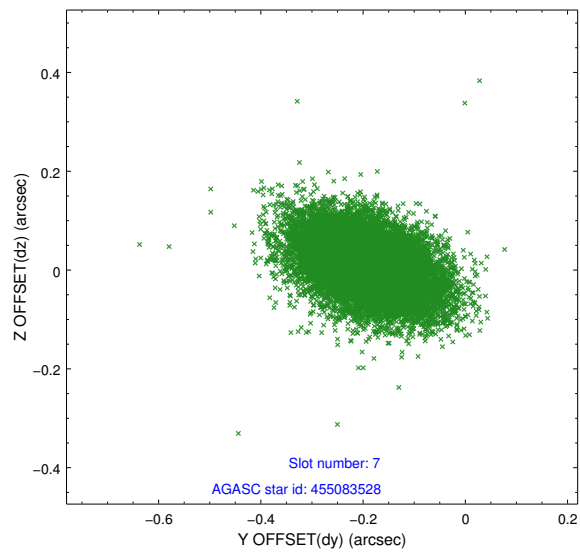
2.4.3 Slot 5



2.4.4 Slot 6

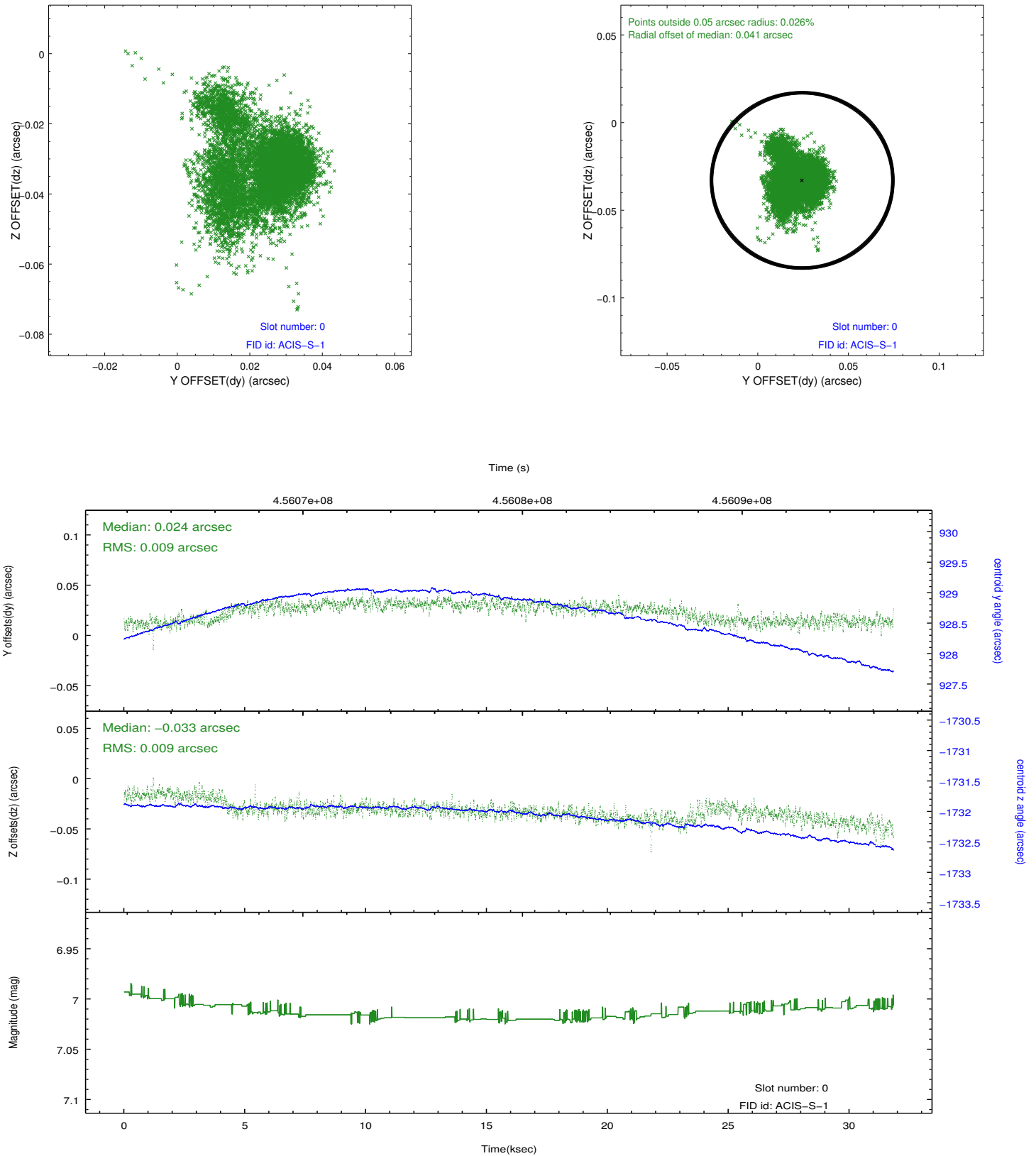


2.4.5 Slot 7

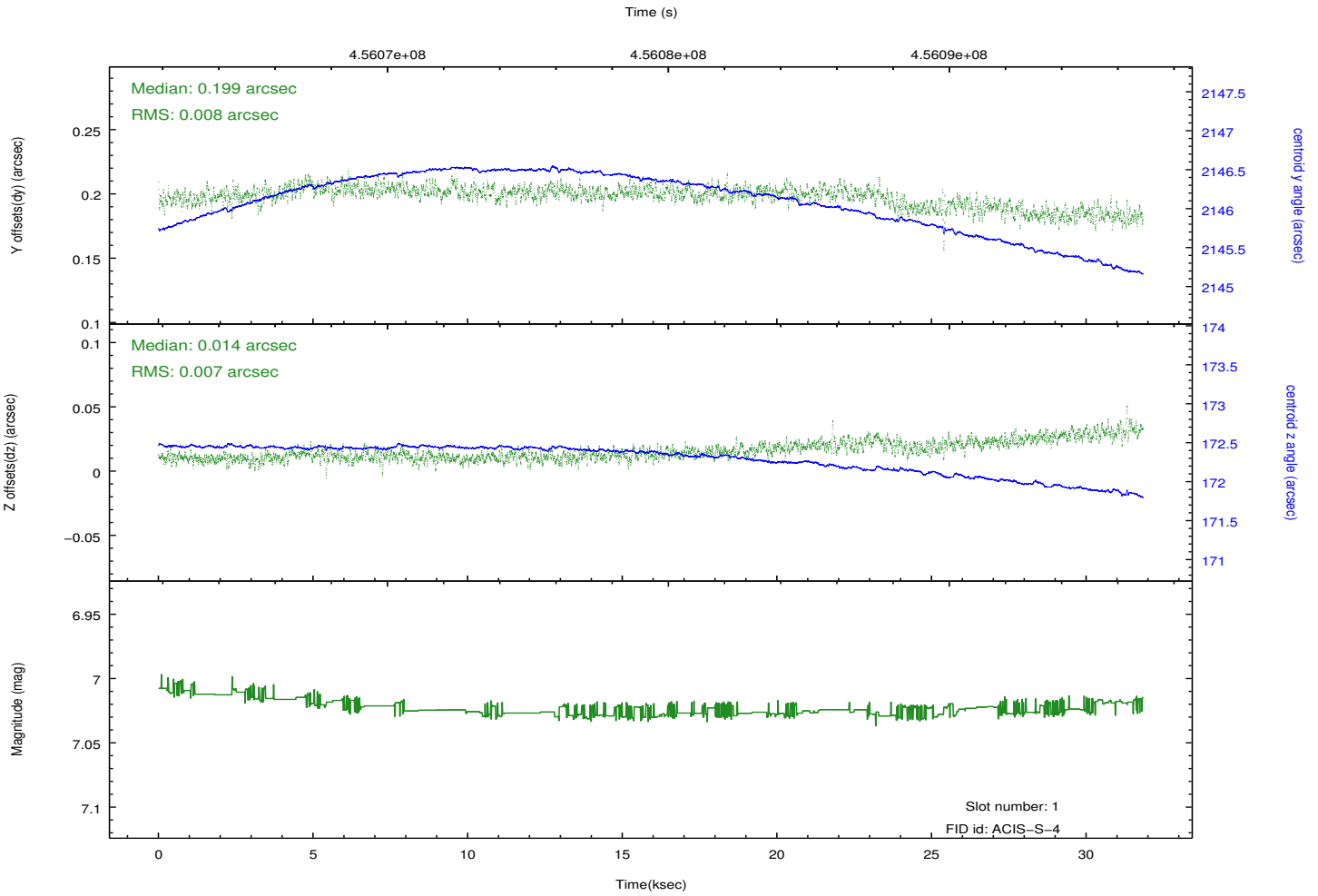
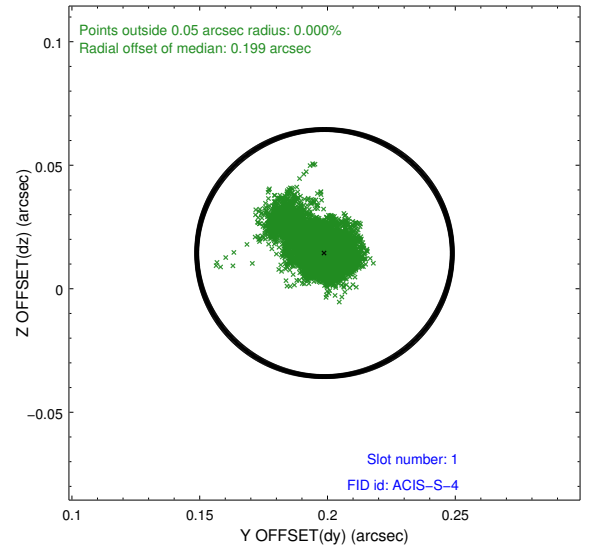
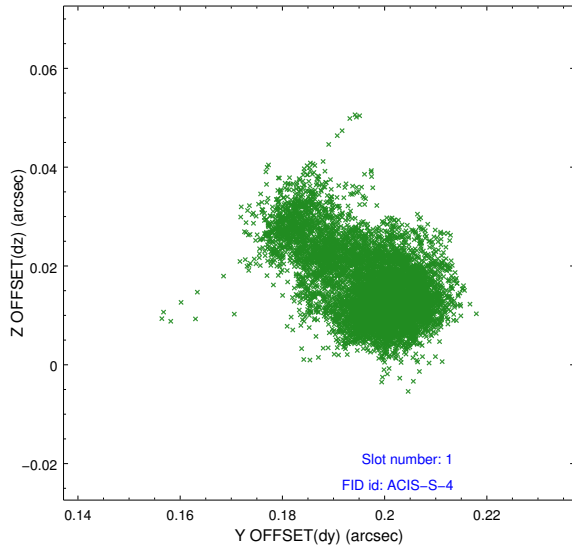


2.5 FID Slots

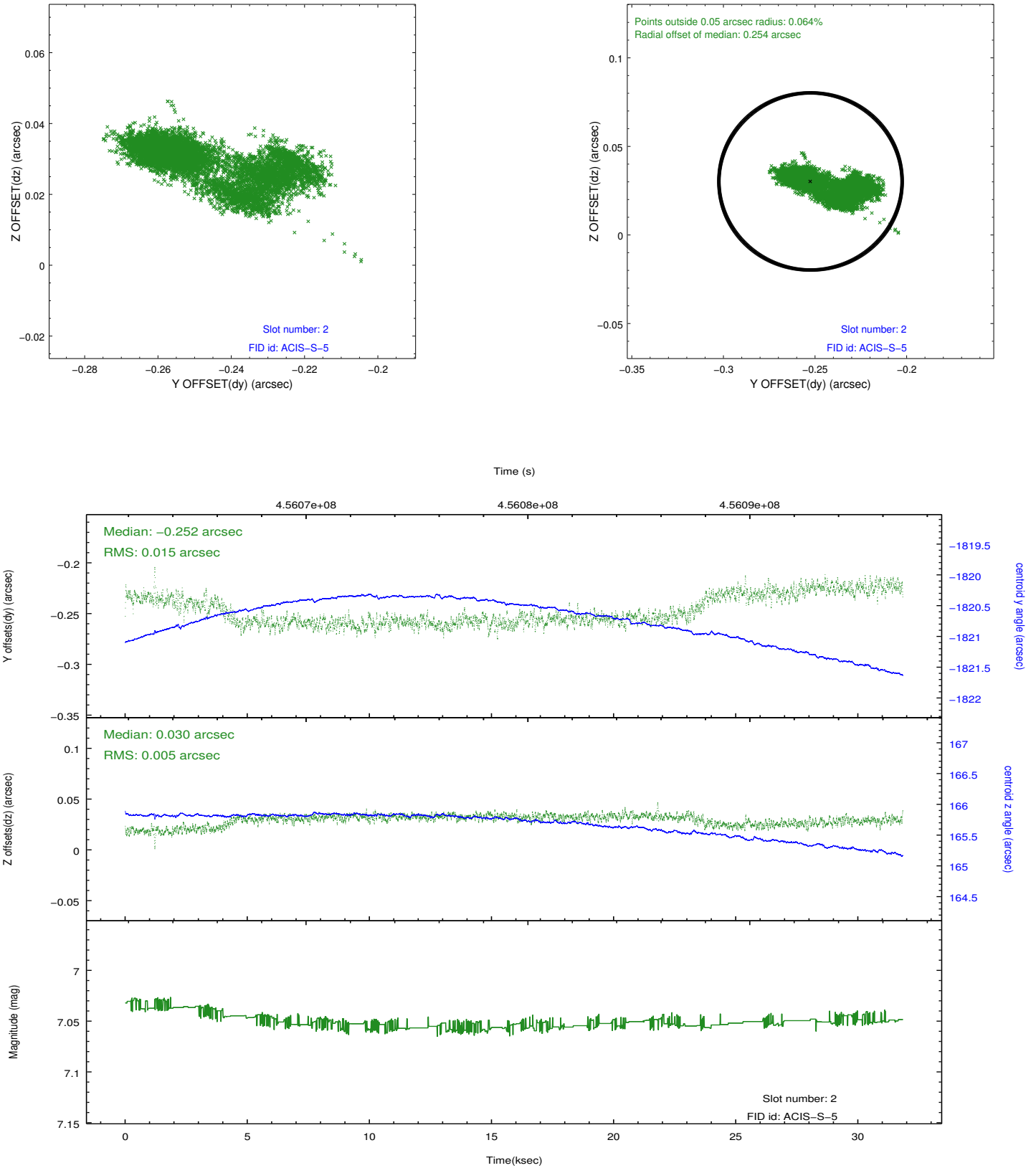
2.5.1 Slot 0



2.5.2 Slot 1



2.5.3 Slot 2



A Summary

A.1 Status

V&V Scientist	Jen Lauer
V&V Date (YYYY-MM-DD)	2012.06.15
V&V Edition	1
V&V Disposition and Status	OK
V&V Charge Time	31.062000238895

A.2 Comments