

V&V Reference Report

L2 ASCDS Version : 8.5.1.1

Observation 14935 - L2 Version 2
Chandra X-Ray Center

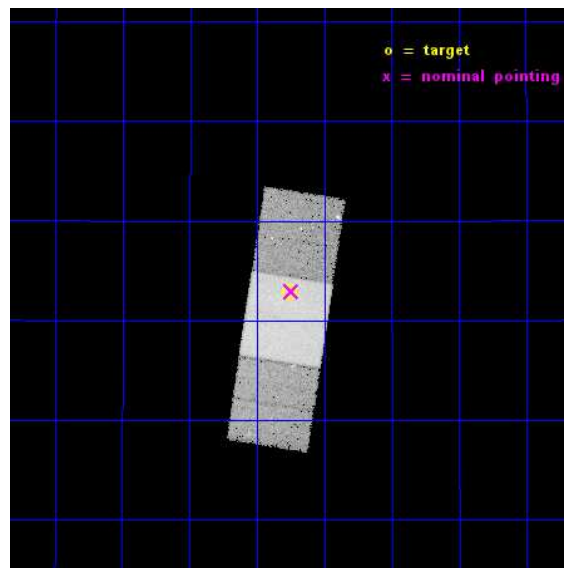
L2 Processing Date : Dec 1 2014

Contents

1	Front	2
2	OBI	3
2.1	OBI	3
2.1.1	Images	3
2.1.2	Bias	3
2.1.3	Parameters	4
2.1.4	Events	4
2.2	Compared Parameters	5
2.3	Aspect	6
2.4	Star Slots	9
2.4.1	Slot 3	9
2.4.2	Slot 4	10
2.4.3	Slot 5	11
2.4.4	Slot 6	12
2.4.5	Slot 7	13
2.5	FID Slots	14
2.5.1	Slot 0	14
2.5.2	Slot 1	15
2.5.3	Slot 2	16
A	Summary	17
A.1	Status	17
A.2	Comments	17

1 Front

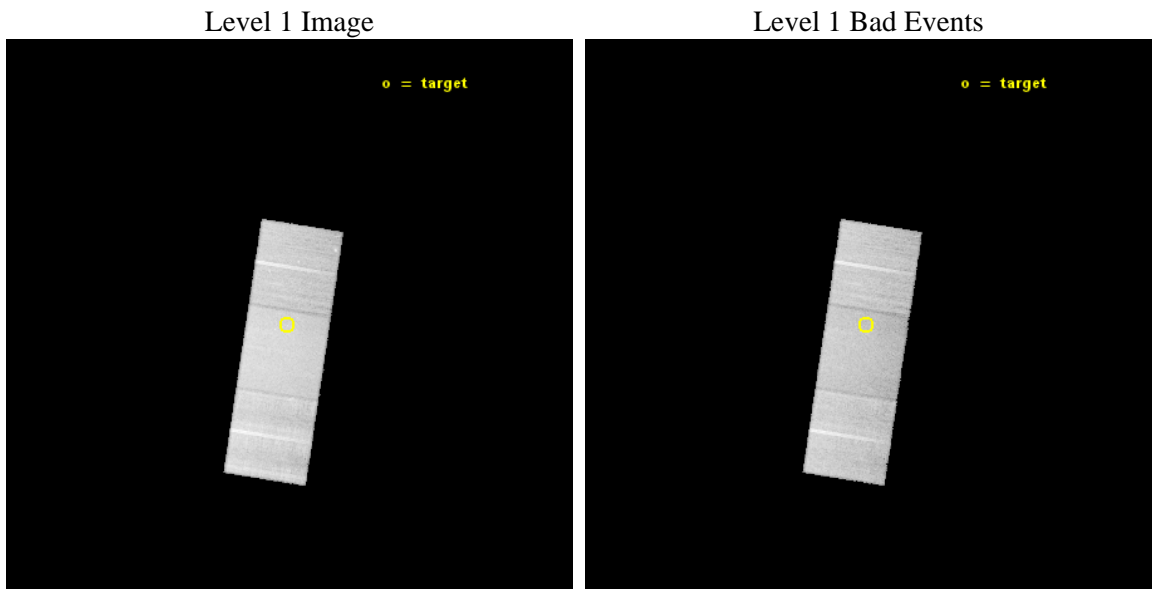
seq_num	601065	Sequence number
obs_id	14935	Observation id
title	Testing supermassive black hole feedback in a pristine environment	
observer	Brendan Miller	Principal investigator
object	IC 0862	Source name
dtcycle	0	
cycle	P	events from which exps? Prim/Second/Both
ra_targ	199.064167	Observer's specified target RA [deg]
dec_targ	20.047667	Observer's specified target Dec [deg]
ra_nom	199.06121447845	Nominal RA [deg]
dec_nom	20.048873402204	Nominal Dec [deg]
roll_nom	98.850625228942	Nominal Roll [deg]
revision	2	Processing version of data
ontime	35116.800270081	Sum of GTIs [s]
lifetime	34657.97342194	Lifetime [s]
ontime6	35116.800270081	Sum of GTIs [s]
ontime7	35116.800270081	Sum of GTIs [s]
ontime8	35116.800270081	Sum of GTIs [s]
l2events	156259	Number of level 2 events



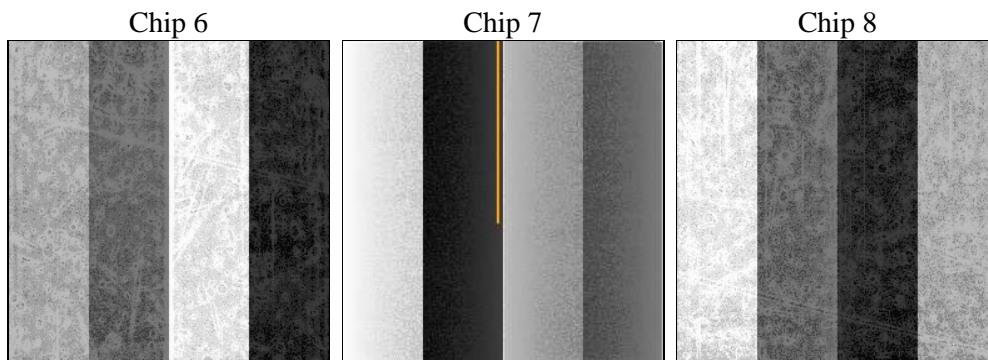
2 OBI

2.1 OBI

2.1.1 Images



2.1.2 Bias



2.1.3 Parameters

obi_num	0	Obi number	sched_exp_time	35000.000000	[s] Scheduled observation exposure time
ascdsver	10.3	Processing system revision	ontime	35116.800270081	Sum of GTIs [s]
caldsver	4.6.4	 	ontime6	35116.800270081	Sum of GTIs [s]
date	2014-12-01T17:29:50	Date and time of file creation	ontime7	35116.800270081	Sum of GTIs [s]
revision	2	Processing version of data	ontime8	35116.800270081	Sum of GTIs [s]
			l1events	717705	Number of level 1 events

2.1.4 Events

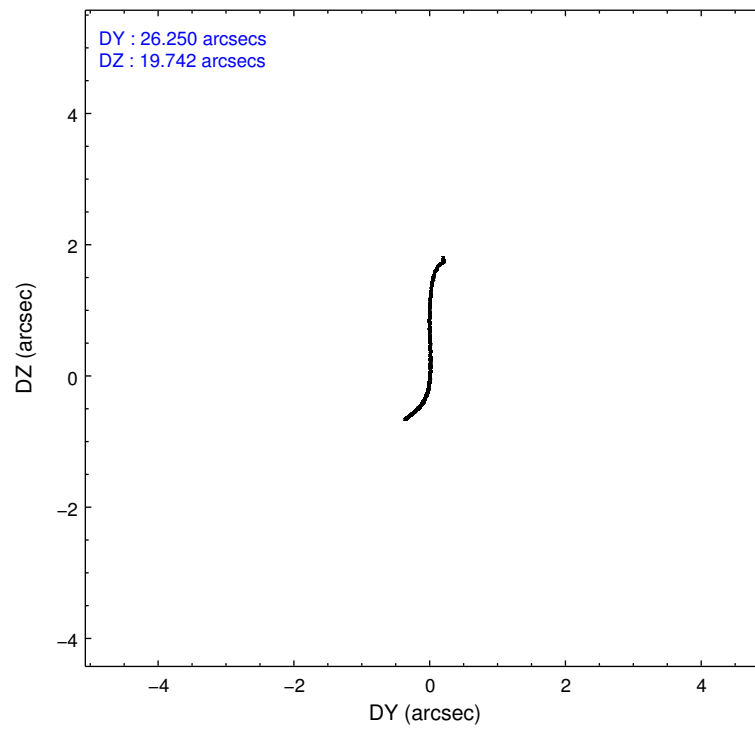
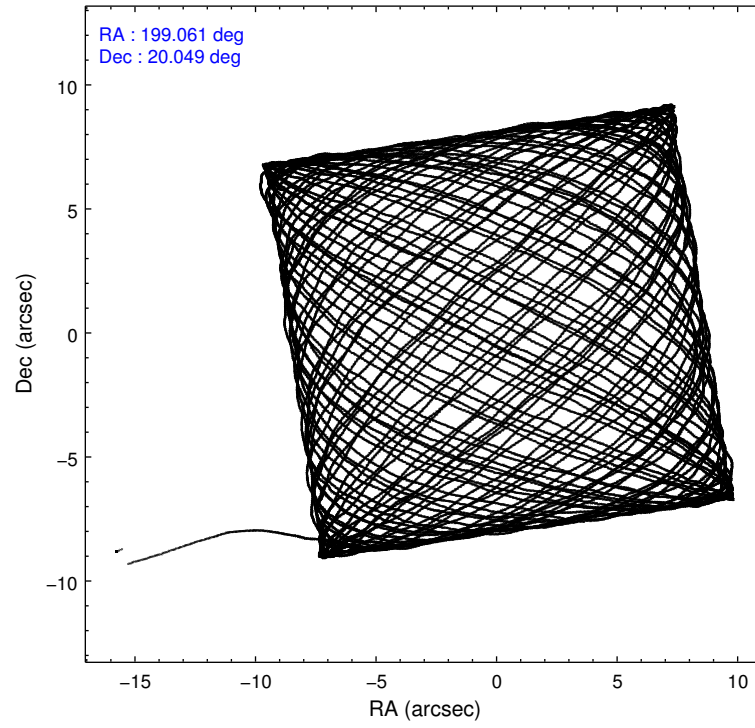
	ccd 6	ccd 7	ccd 8
level 1 events	199229	257538	260938
rejected events	175338	143870	189640
rejected %	88%	55%	72%

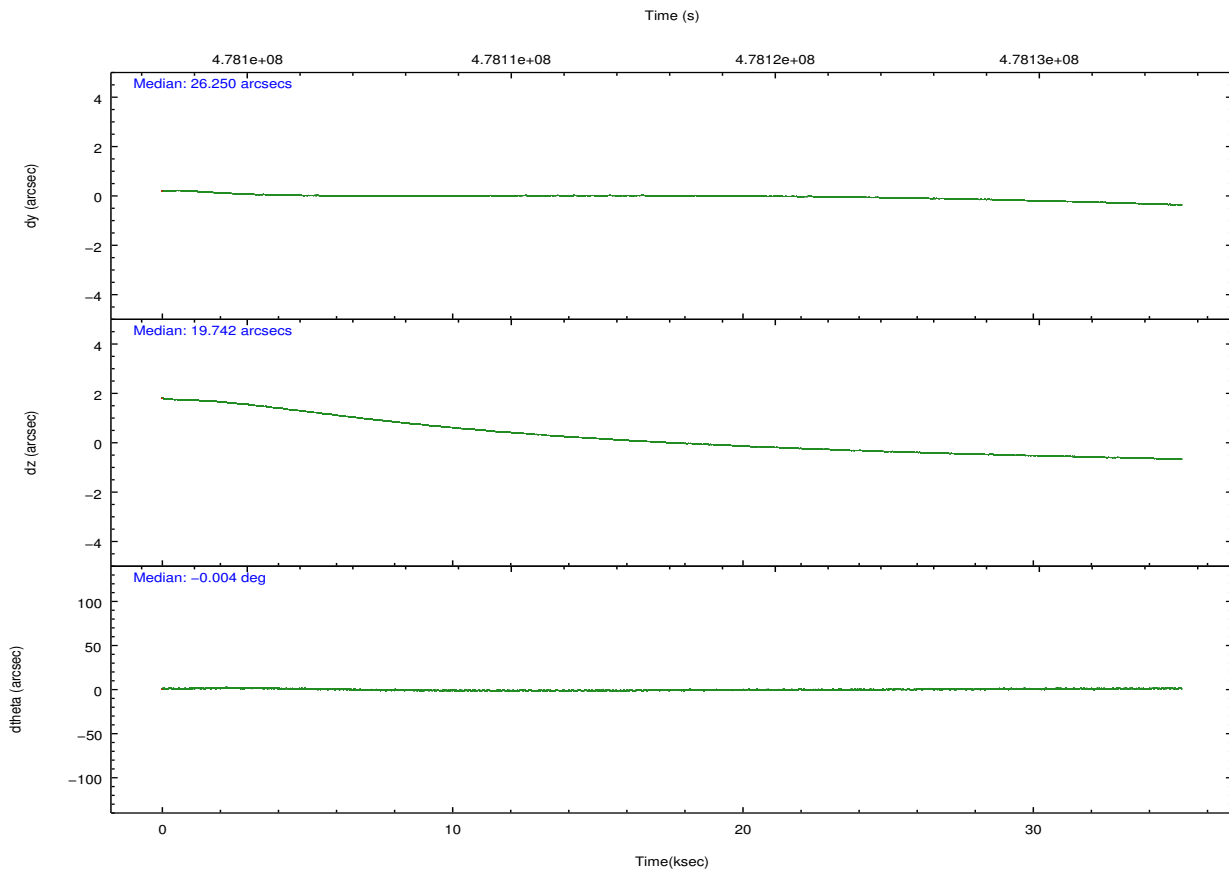
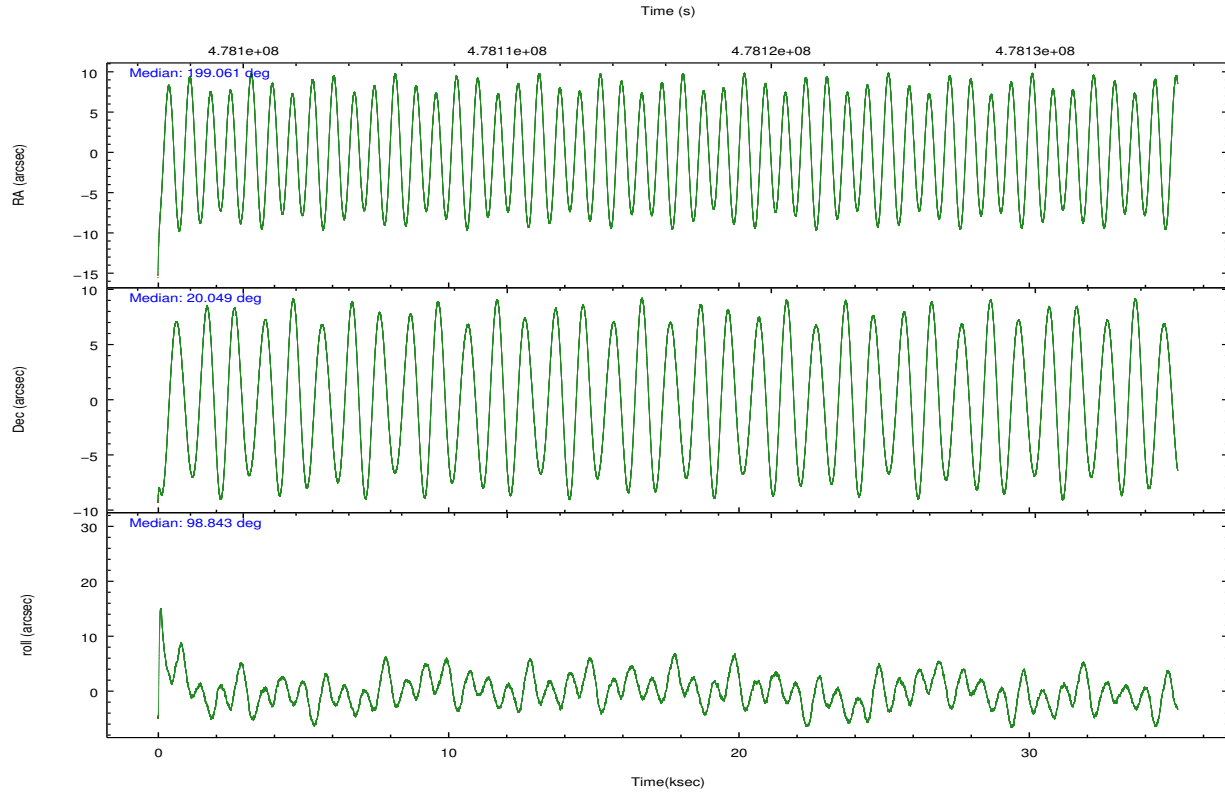
	ccd 6	ccd 7	ccd 8
grade 0 events	8313	10179	20241
	4%	3%	7%
grade 1 events	118	312	206
	0%	0%	0%
grade 2 events	5354	23079	16910
	2%	8%	6%
grade 3 events	2489	9933	7174
	1%	3%	2%
grade 4 events	2384	9680	6887
	1%	3%	2%
grade 5 events	10014	26964	14297
	5%	10%	5%
grade 6 events	5353	60812	20094
	2%	23%	7%
grade 7 events	165204	116579	175129
	82%	45%	67%

2.2 Compared Parameters

Parameter	Planned	Actual	Parameter	Planned	Actual
Instrument	ACIS	ACIS	Obspar format version number	7	7
Detector	ACIS-678	ACIS-678	Obspar file type	PREDICTED	ACTUAL
Grating	NONE	NONE	Obspar update status	NONE	UPDATED
Data mode	VFAINT	VFAINT	CCD I0 on	N	N
Observation mode	POINTING	POINTING	CCD I1 on	N	N
[deg] Pointing RA	199.079775	199.0612144784475	CCD I2 on	N	N
[deg] Pointing Dec	20.027818	20.04887340220371	CCD I3 on	N	N
[deg] Pointing Roll	98.687650	98.85062522894171	CCD S0 on	N	N
[mm] SIM focus pos	-0.684267	-0.6828225247311905	CCD S1 on	N	N
[mm] SIM defocus	0	0.001444936568705701	CCD S2 on	O1	Y
[mm] SIM translation stage pos	-190.132523	-190.1400660498719	CCD S3 on	Y	Y
[mm] SIM translation stage offset	0	0.00754346686406393	CCD S4 on	O2	Y
[s] Observation start time (MET)	478098638.184000	478097244.38303	CCD S5 on	N	N
Observation start date	2013-02-24T13:09:31	2013-02-24T12:47:24	Number of optional ACIS chips dropped	0	0
[s] Observation end time (MET)	478133638.184000	478134489.81005	On-chip summing requested	N	N
Observation end date	2013-02-24T22:52:51	2013-02-24T23:08:09	Subarray requested	NONE	NONE
Read mode	TIMED	TIMED	Alternating exposures requested	N	N
			[s] Primary exposure time	0.000000	3.1

2.3 Aspect





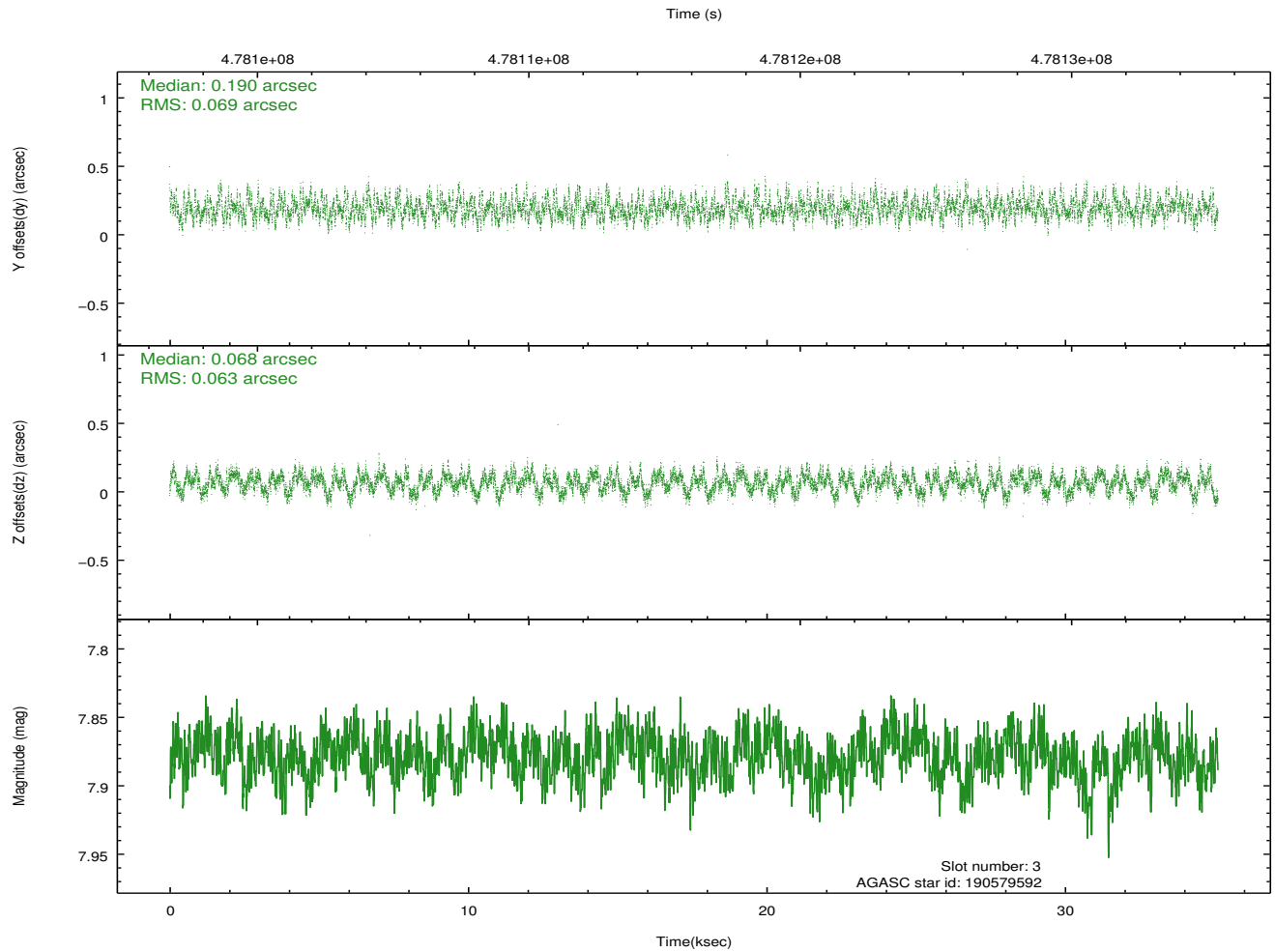
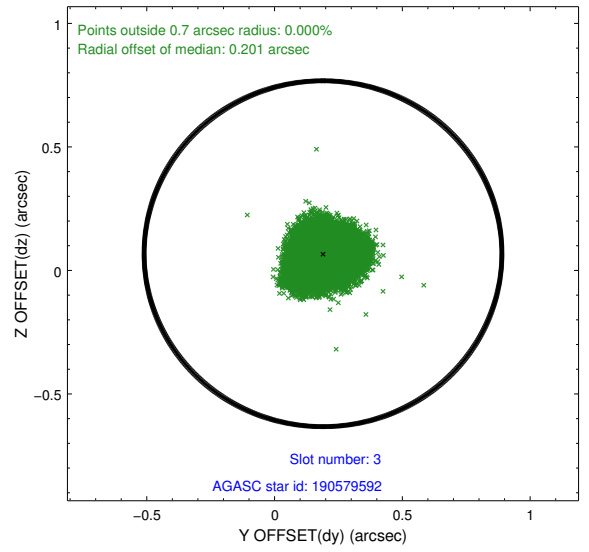
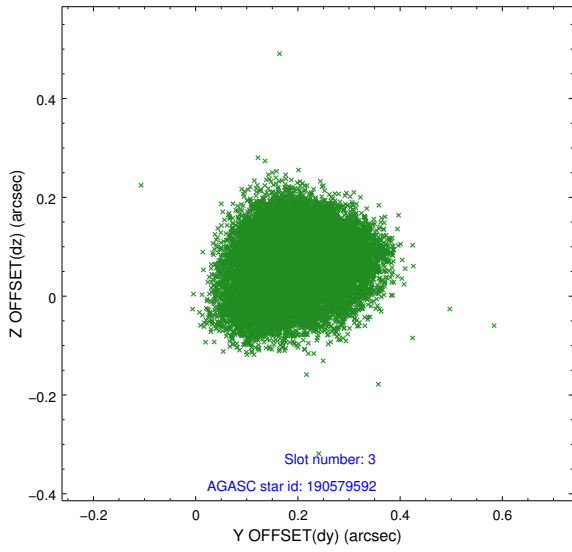
Slot Statistics

slot	status	used	id	mag	n_pts	med_dy	med_dz	dr1	dr2	ra	dec	mean_y	mean_z
0	FID		ACIS-S-2	6.95	8568	-0.182	-0.017	0.016	0.025	0.000000	0.000000	-779.65	-1741.50
1	FID		ACIS-S-4	7.04	8567	0.350	0.093	0.010	0.027	0.000000	0.000000	2134.13	167.07
2	FID		ACIS-S-5	7.07	8566	-0.199	-0.064	0.011	0.018	0.000000	0.000000	-1832.47	160.60
3	GUIDE	used	190579592	7.88	17130	0.190	0.068	0.102	0.156	199.185264	19.815187	-809.44	-235.99
4	GUIDE	used	190977008	9.60	17001	-0.313	0.095	0.165	0.262	199.268581	20.330861	982.58	-794.45
5	GUIDE	used	190978184	8.77	17115	0.049	-0.030	0.087	0.138	199.128456	20.098008	225.81	-200.60
6	GUIDE	used	190980688	8.14	17126	-0.379	-0.616	0.092	0.140	198.430177	20.416265	1717.37	1954.96
7	GUIDE	used	190980880	9.92	17102	0.448	0.502	0.183	0.300	199.457182	20.030035	-182.48	-1262.44

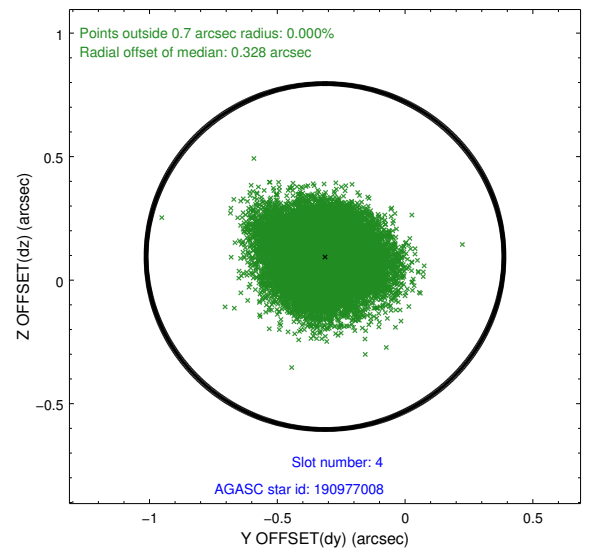
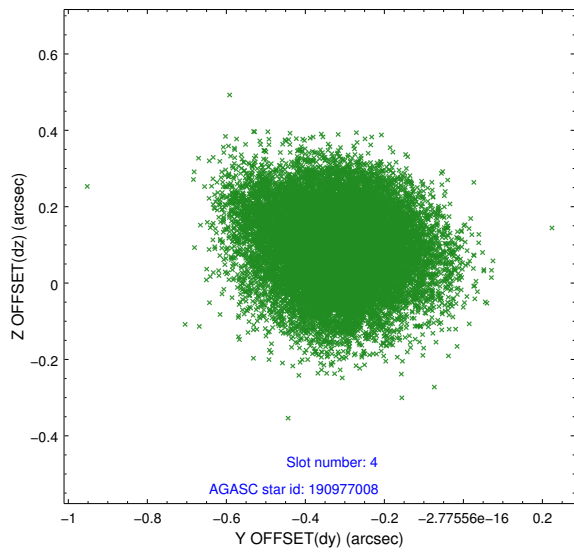
∞

2.4 Star Slots

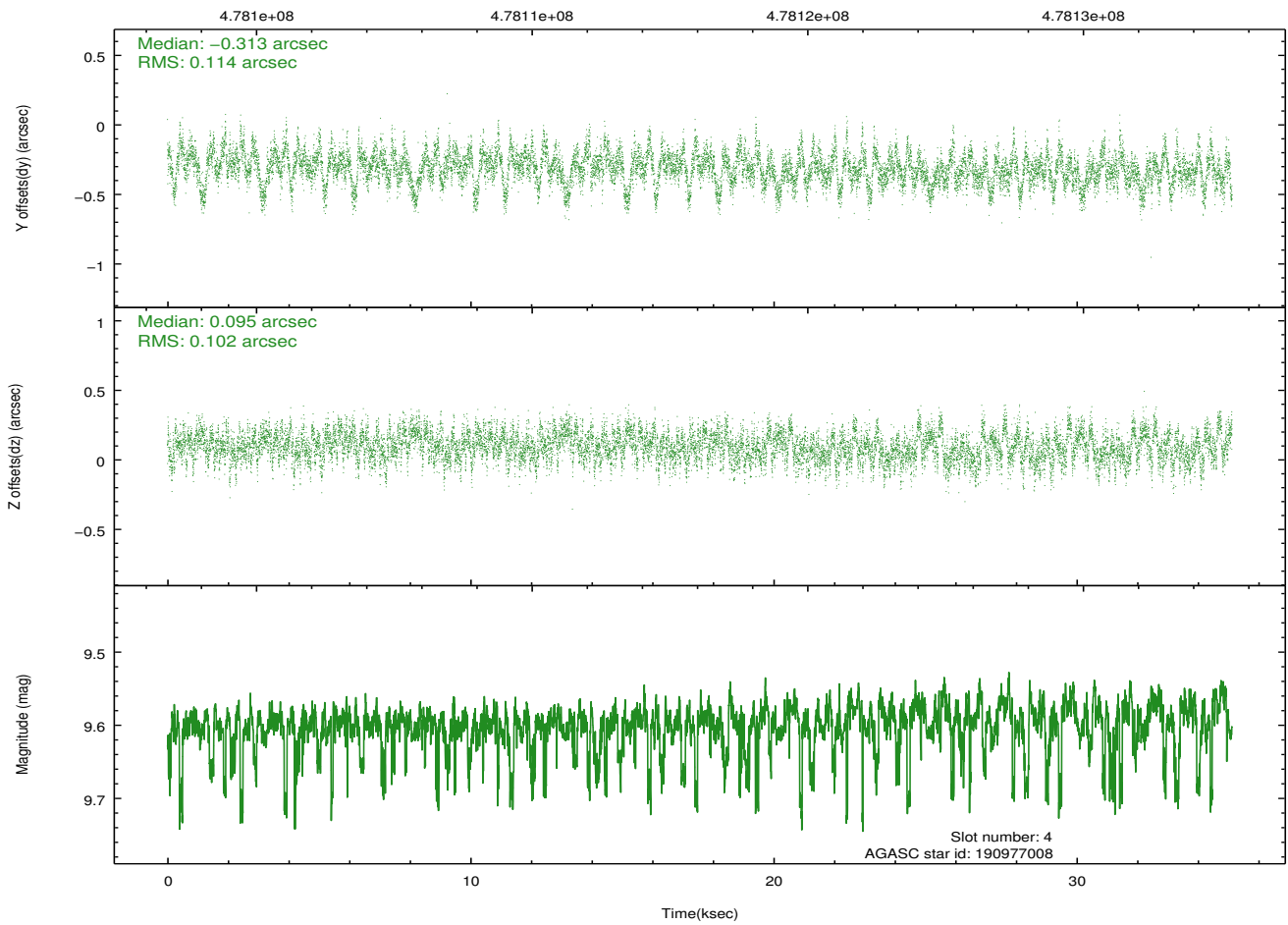
2.4.1 Slot 3



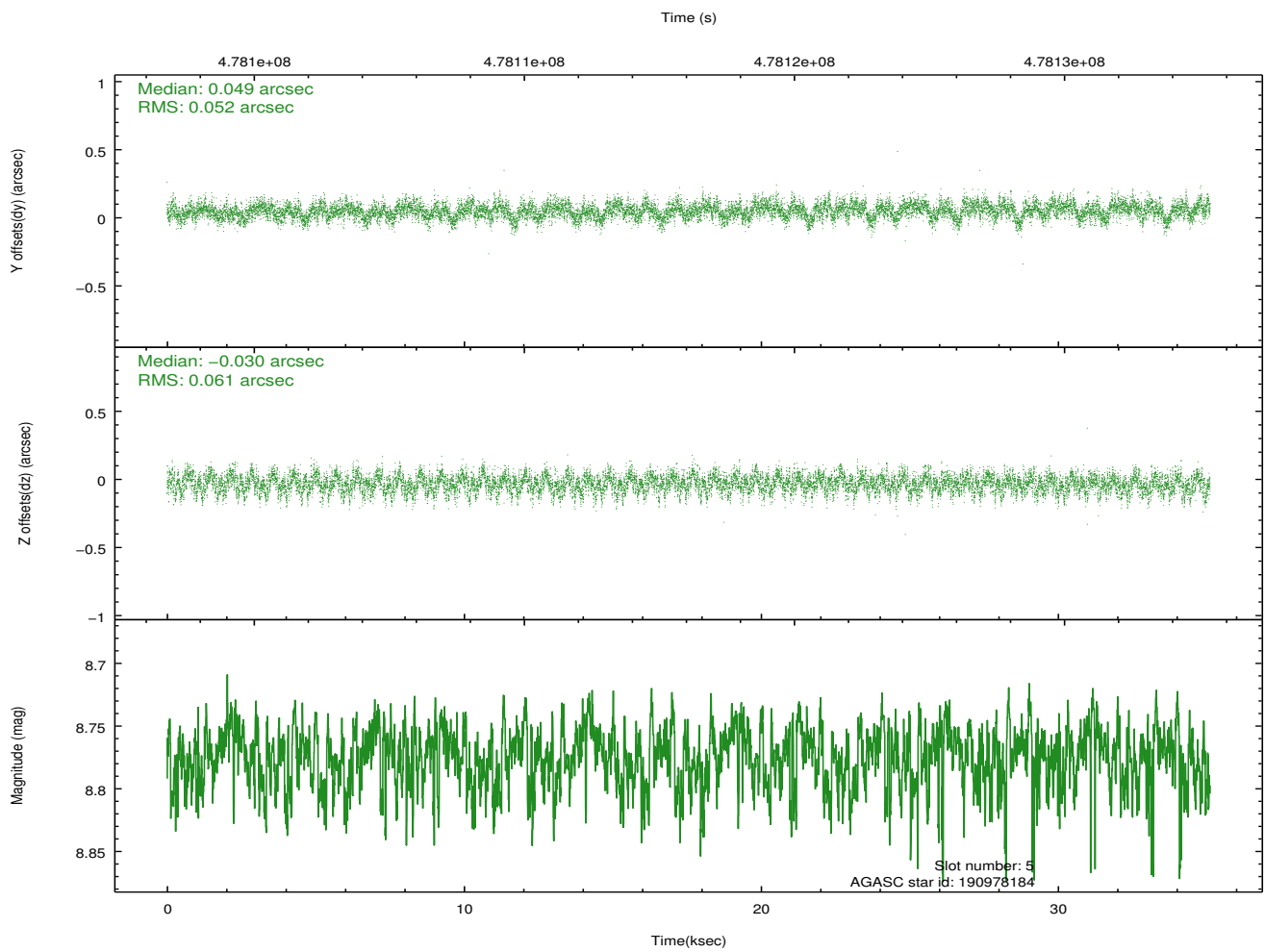
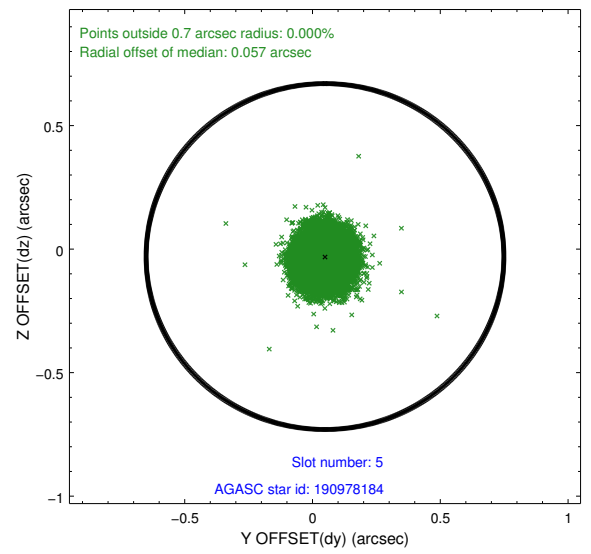
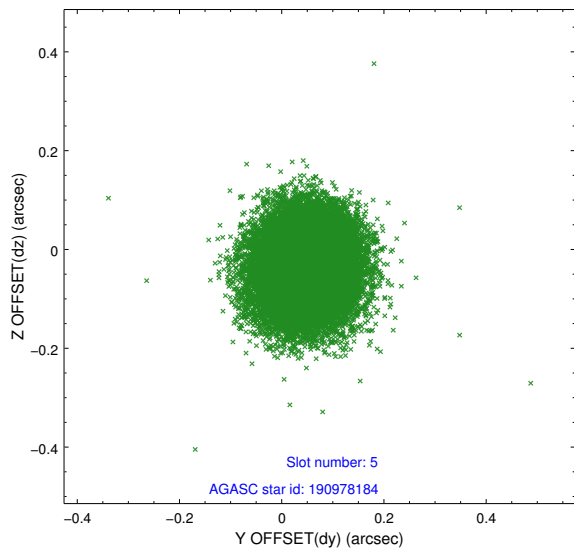
2.4.2 Slot 4



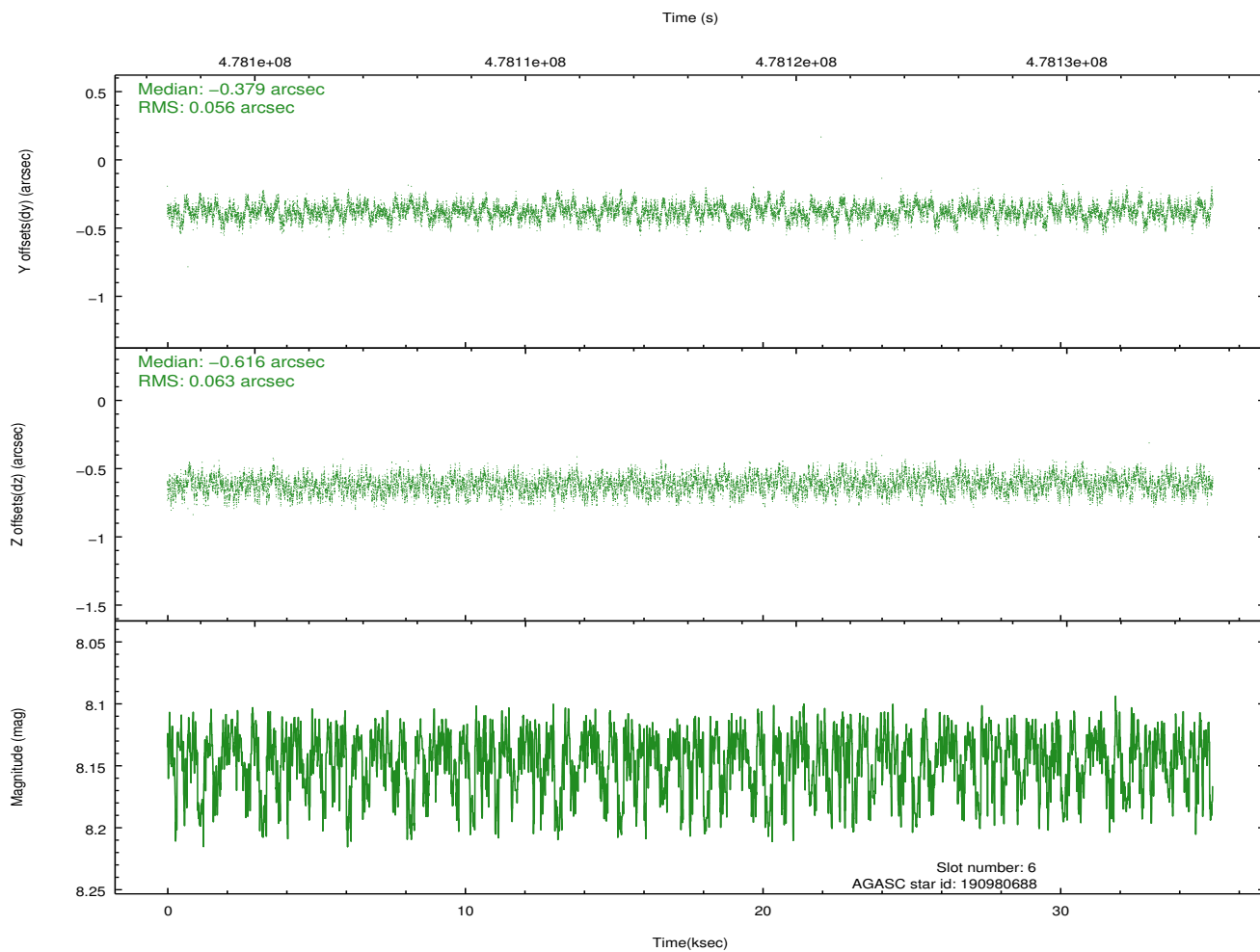
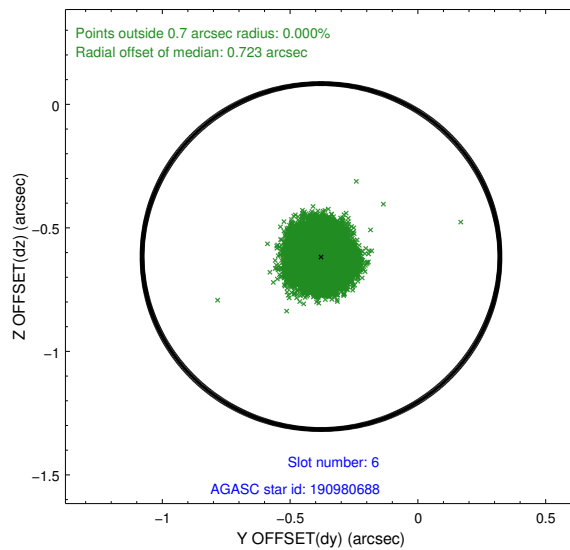
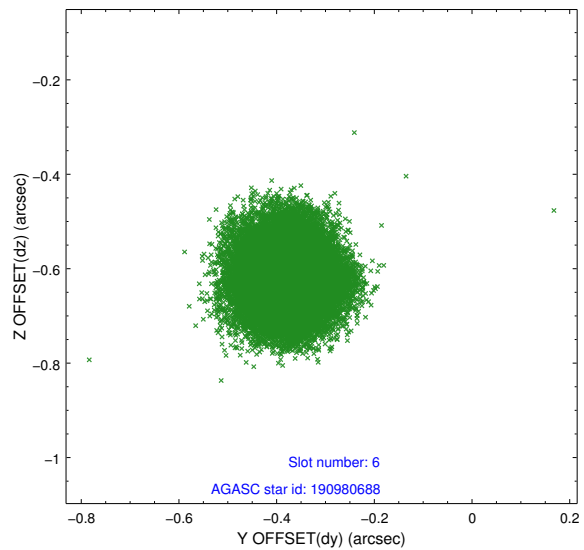
Time (s)



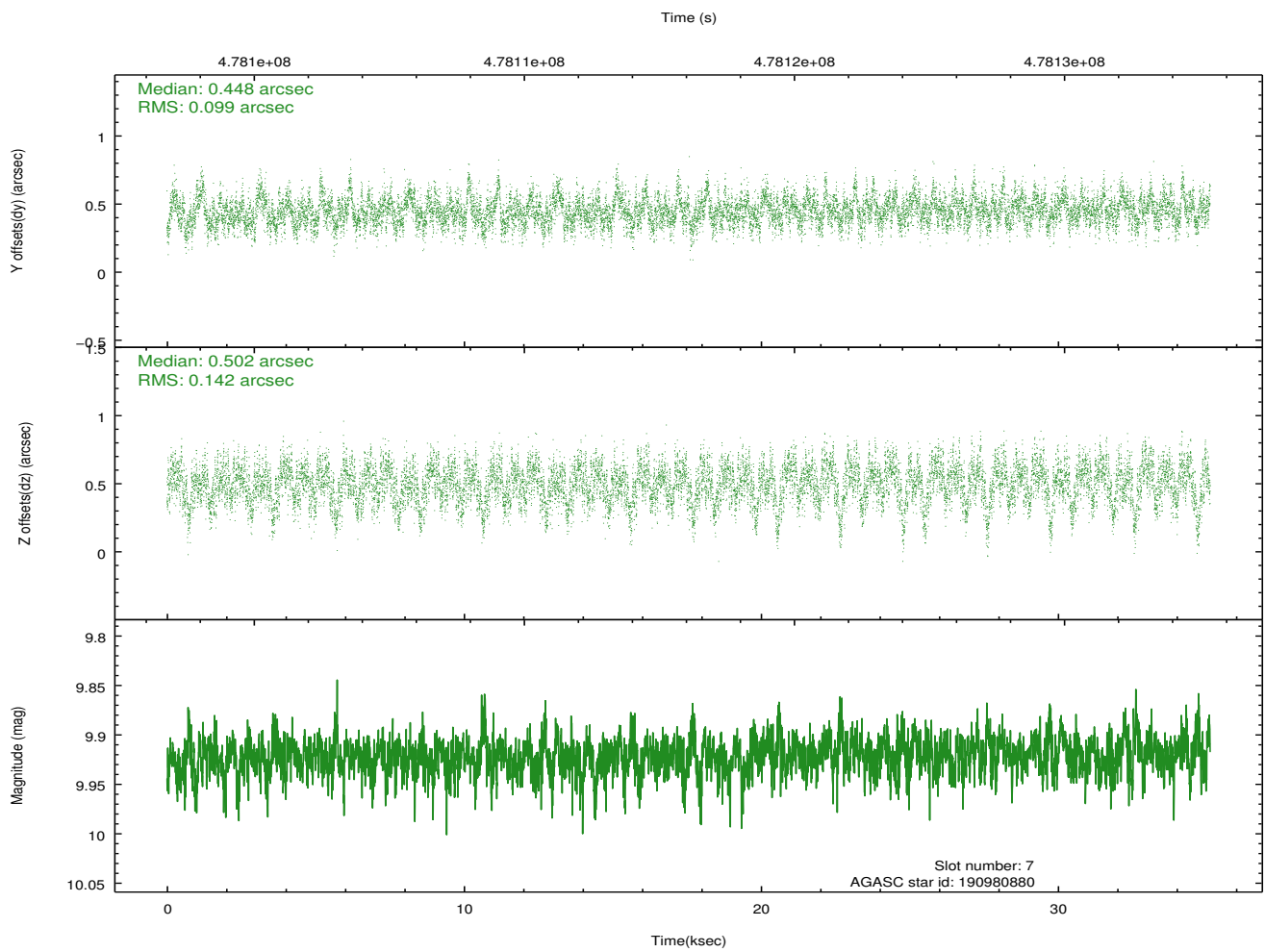
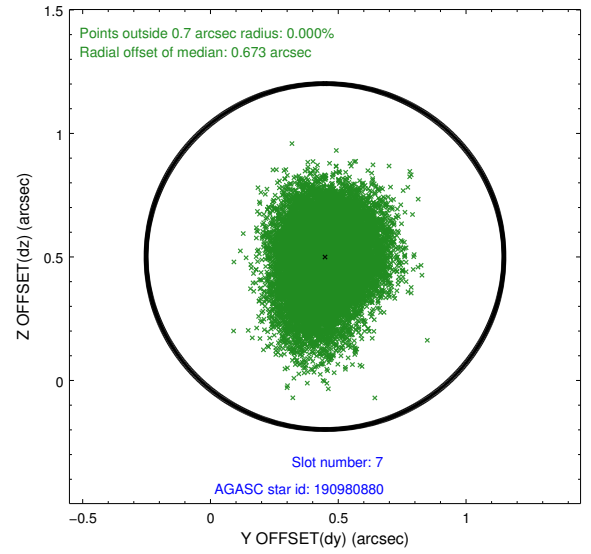
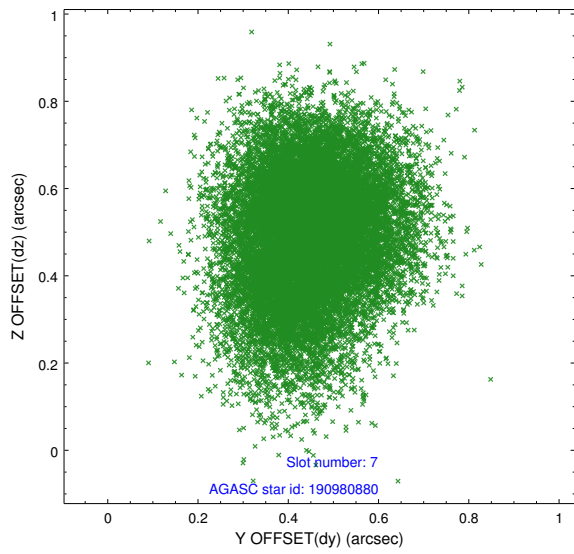
2.4.3 Slot 5



2.4.4 Slot 6

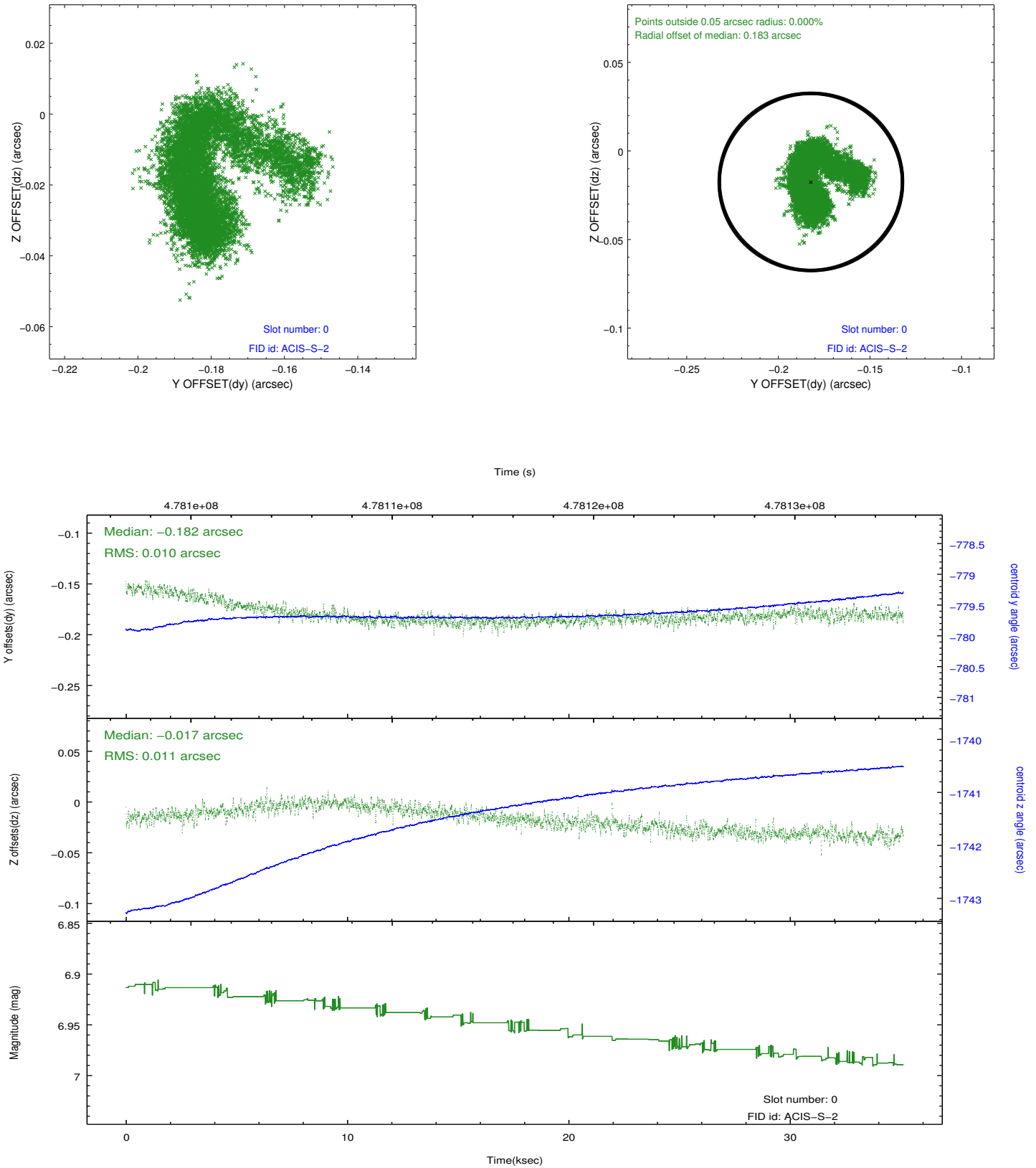


2.4.5 Slot 7

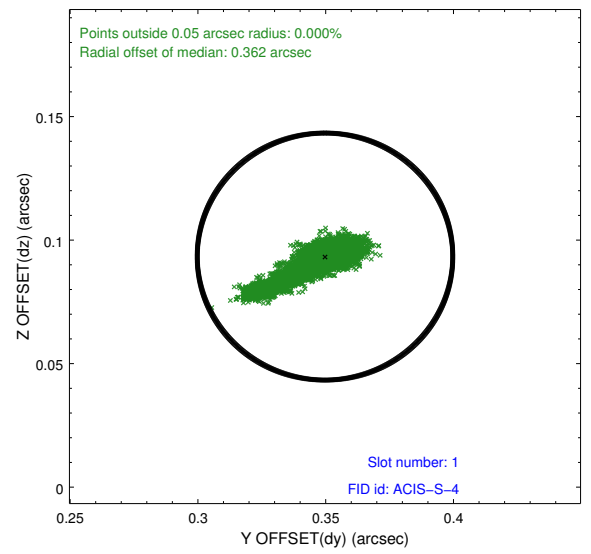
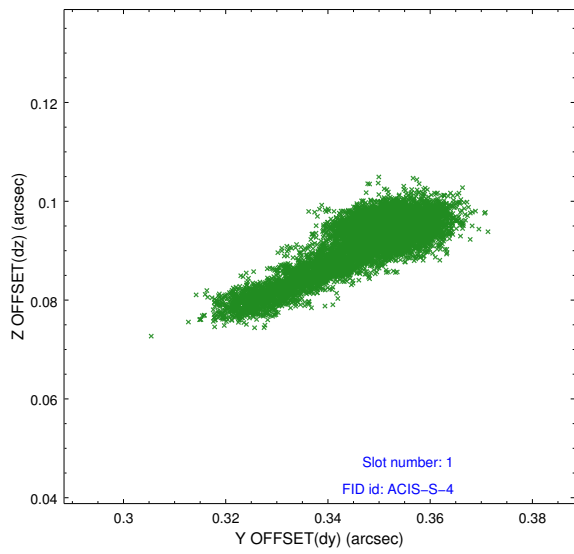


2.5 FID Slots

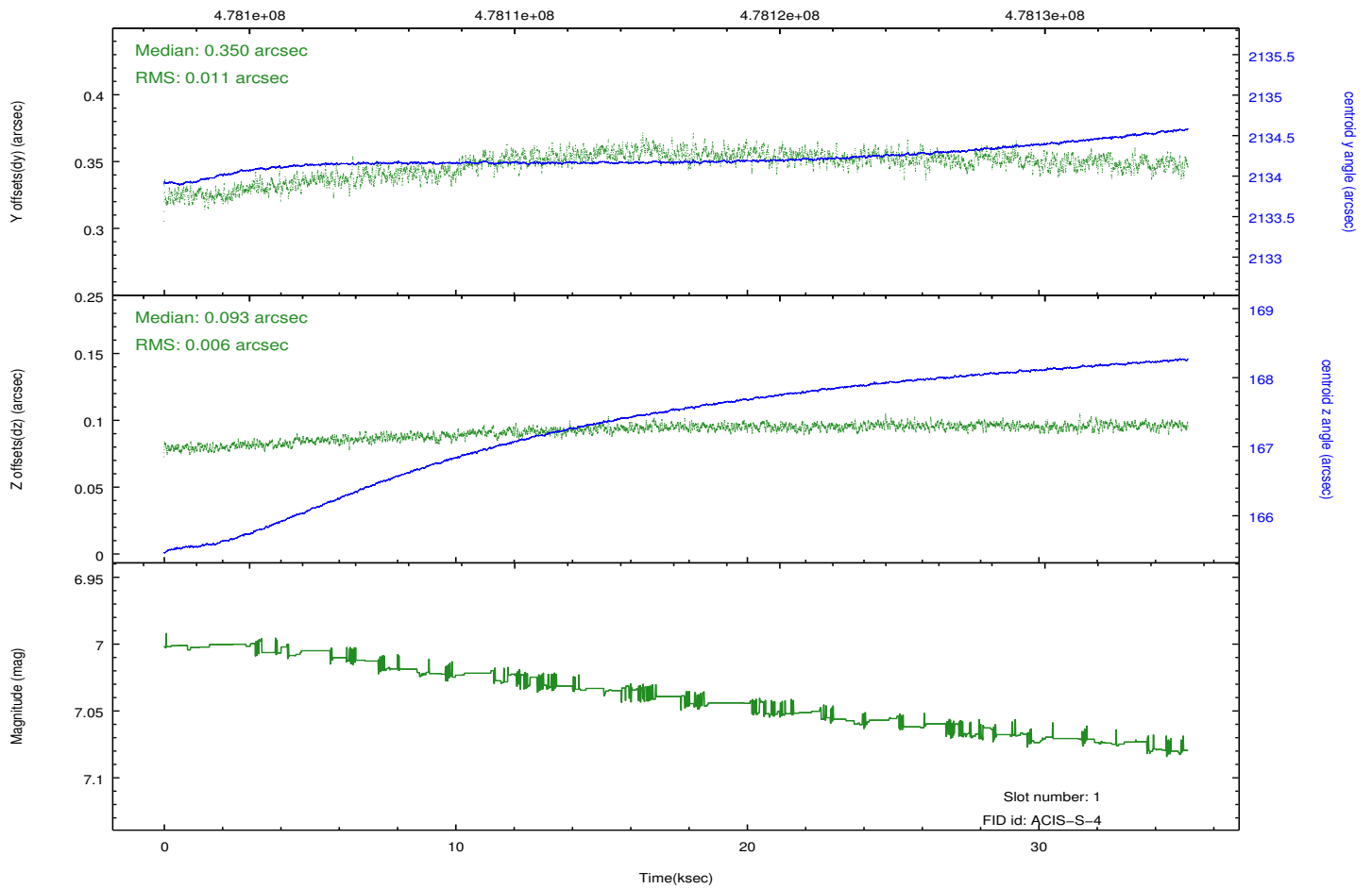
2.5.1 Slot 0



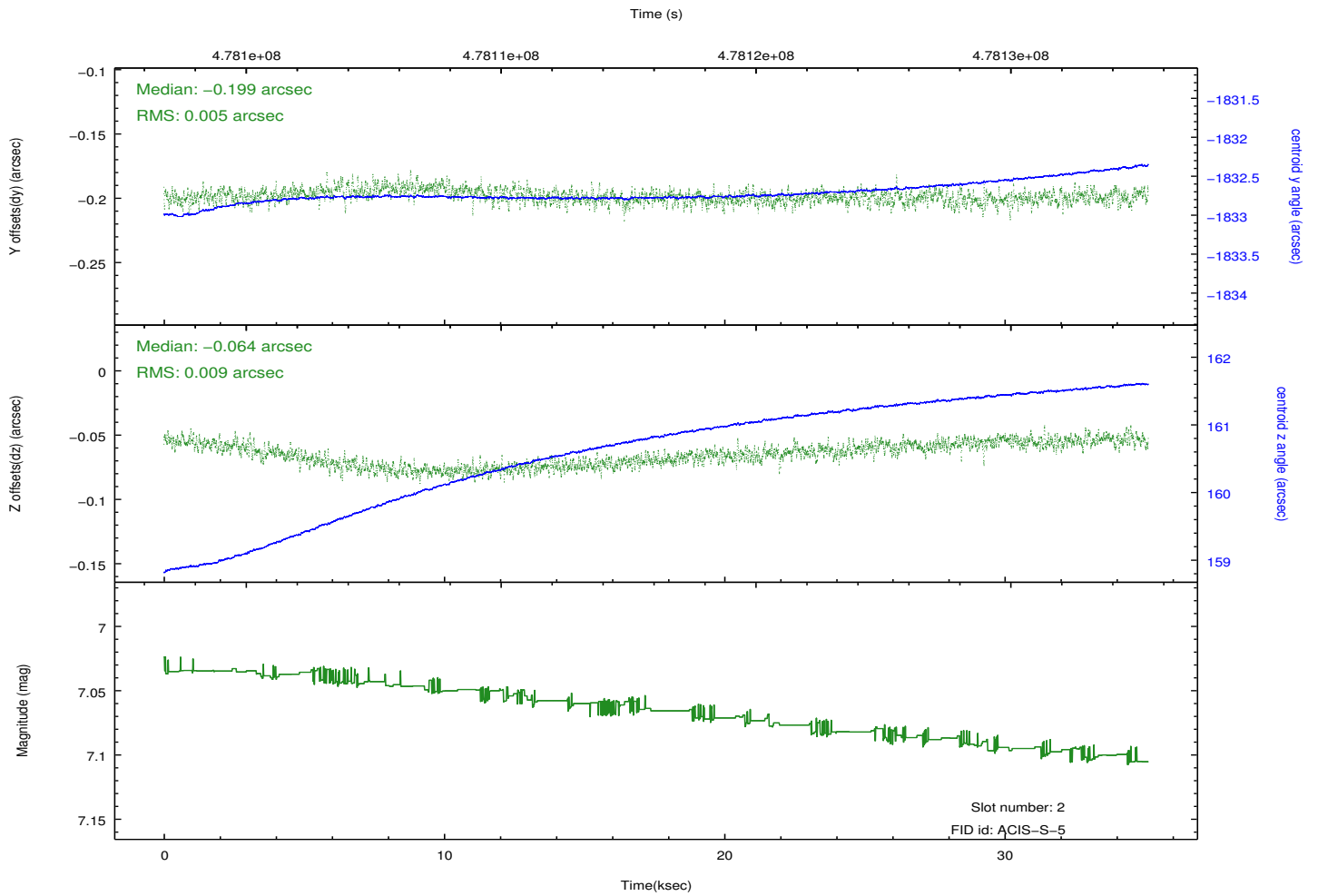
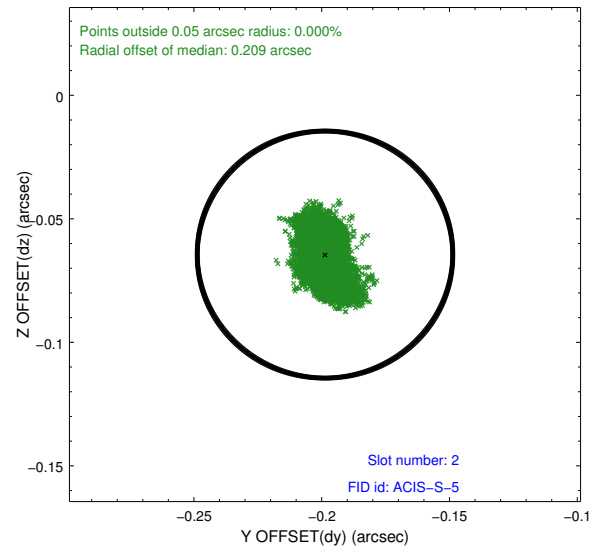
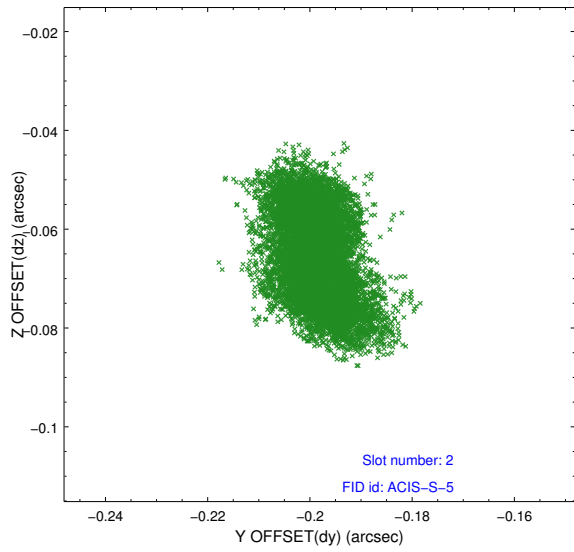
2.5.2 Slot 1



Time (s)



2.5.3 Slot 2



A Summary

A.1 Status

V&V Scientist	Beth Sundheim
V&V Date (YYYY-MM-DD)	2014.12.09
V&V Edition	1
V&V Disposition and Status	OK
V&V Charge Time	35.116800270081

A.2 Comments

These data have been reprocessed with new aspect alignment calibration files that correct small mean offsets (up to 0.4 arcsecs) and improve overall astrometric accuracy. The new calibration was determined using data from the time period being reprocessed and was performed using cross-correlation of X-ray sources with radio and optical counterparts.