

V&V Reference Report

L2 ASCDS Version : 8.4.5

Observation 1555 - L2 Version 5
Chandra X-Ray Center

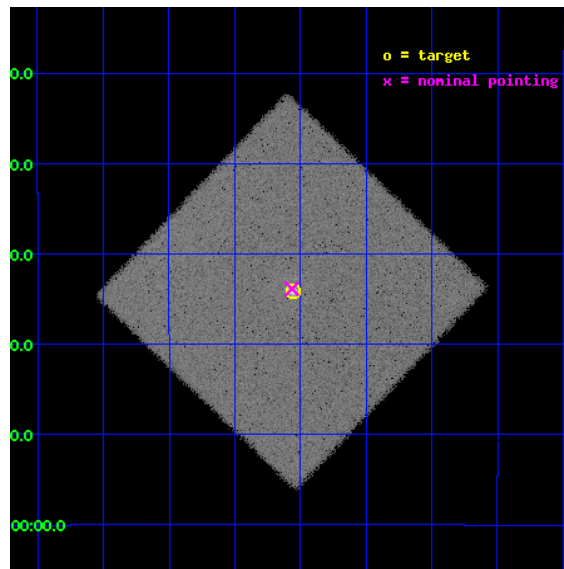
L2 Processing Date : Sep 11 2012

Contents

1 Front	2
2 OBI	3
2.1 OBI	3
2.1.1 Images	3
2.1.2 Parameters	4
2.1.3 Events	4
2.2 Compared Parameters	5
2.3 Aspect	6
2.4 Star Slots	9
2.4.1 Slot 3	9
2.4.2 Slot 4	10
2.4.3 Slot 5	11
2.4.4 Slot 6	12
2.4.5 Slot 7	13
2.5 FID Slots	14
2.5.1 Slot 0	14
2.5.2 Slot 1	15
2.5.3 Slot 2	16
A Summary	17
A.1 Status	17
A.2 Comments	17

1 Front

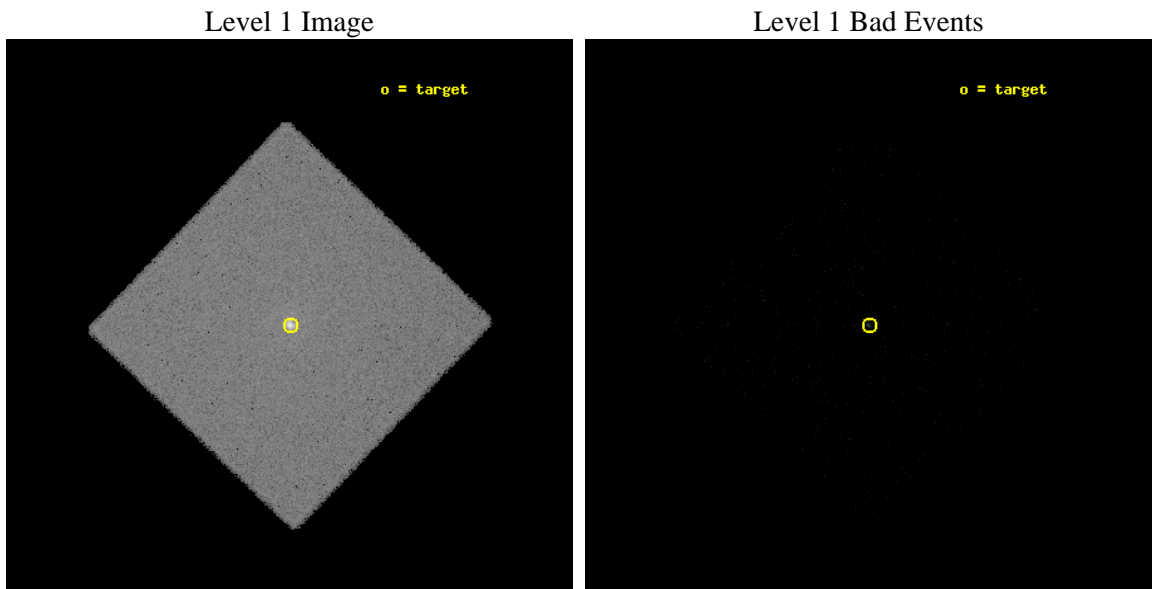
seq_num	590164	Sequence number
obs_id	1555	Observation id
title	CALIBRATION OBSERVATIONS OF THE STANDARD CANDLE G21.5-09	Proposal
observer	Dr. CXC Calibration	Principal investigator
object	G21.5-0.9 [HRC-I, Offsets=0,0,0 Offsets=AO2A]	Source name
ra_targ	278.389583	Observer's specified target RA [deg]
dec_targ	-10.568528	Observer's specified target Dec [deg]
ra_nom	278.39138846763	Nominal RA [deg]
dec_nom	-10.564433325119	Nominal Dec [deg]
roll_nom	88.758459521695	Nominal Roll [deg]
revision	5	Processing version of data
ontime	8983.3565971702	[s]
livetime	8934.9684831444	Ontime multiplied by DTCOR
l2events	261836	Number of level 2 events



2 OBI

2.1 OBI

2.1.1 Images



2.1.2 Parameters

obi_num	0	Obi number	sched_exp_time	9000.000000	[s] Scheduled observation exposure time
ascdsver	8.4.5	Processing system revision	ontime	8983.3565971702	[s]
caldsver	4.5.1.1	 	l1events	389969	Number of level 1 events
date	2012-09-11T23:55:11	Date and time of file creation			
revision	5	Processing version of data			

2.1.3 Events

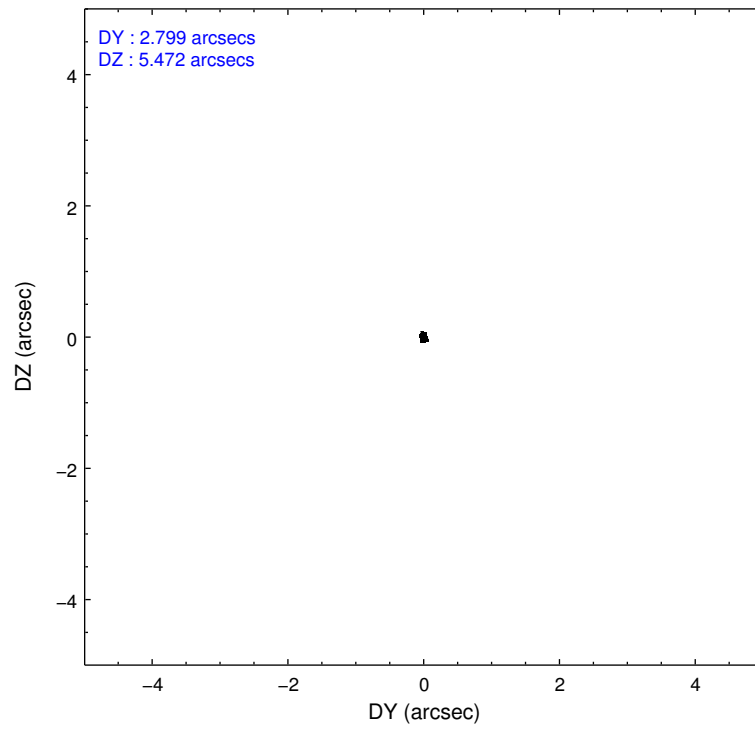
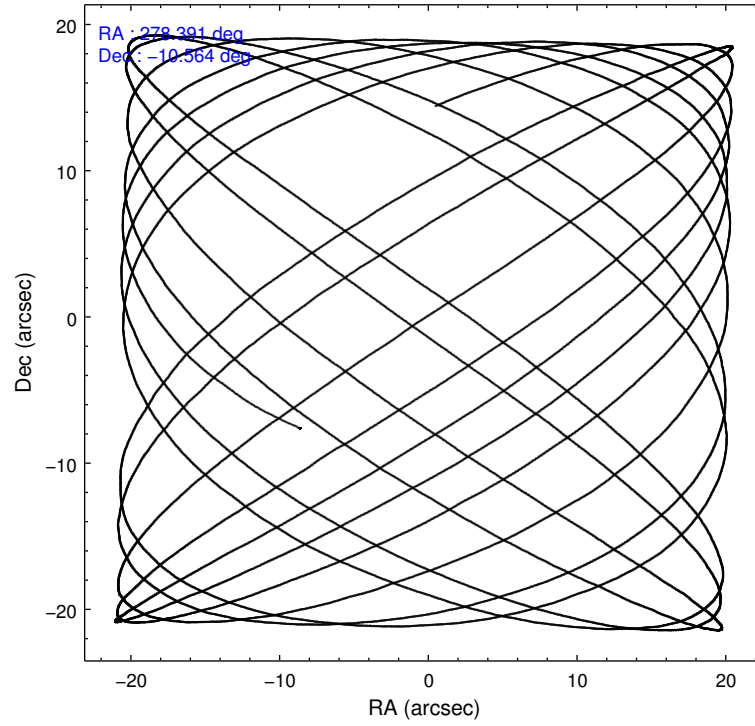
Level 1 Events

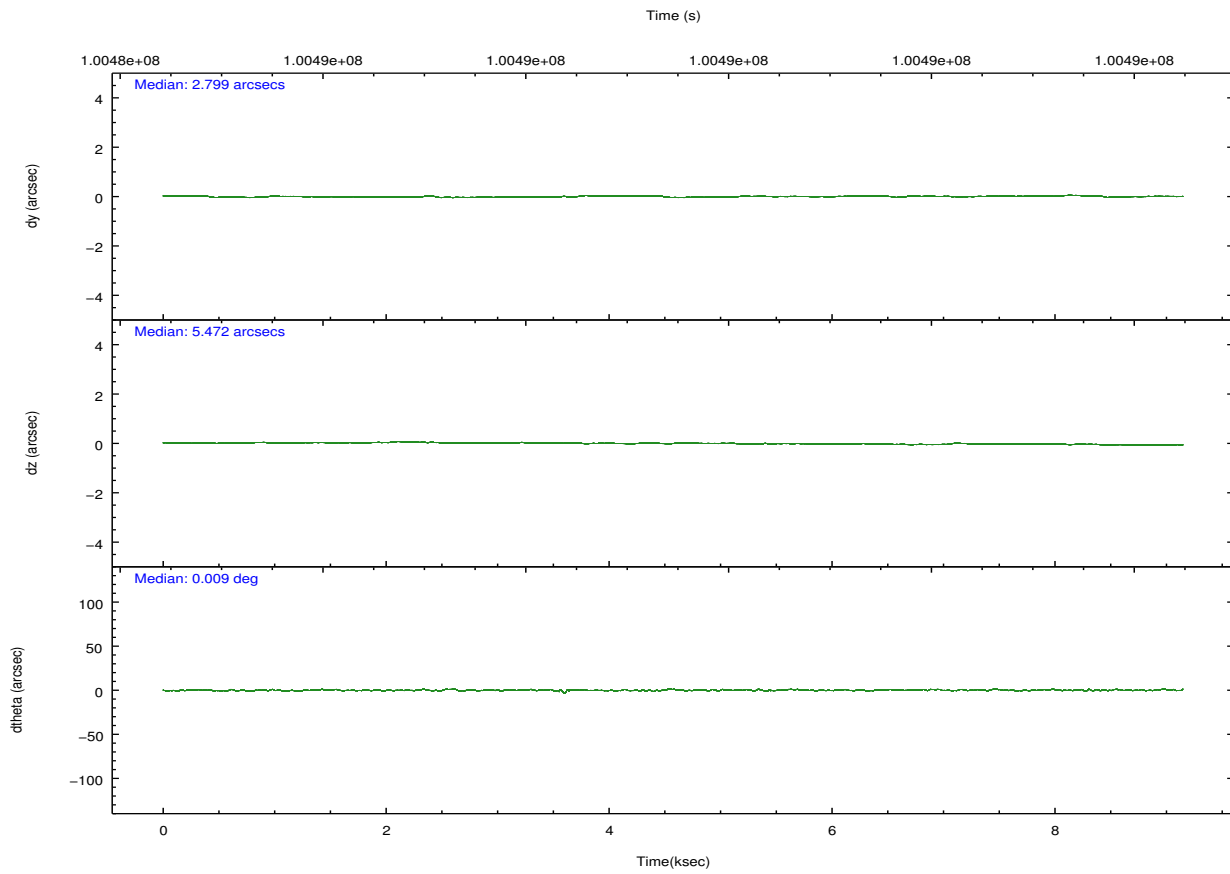
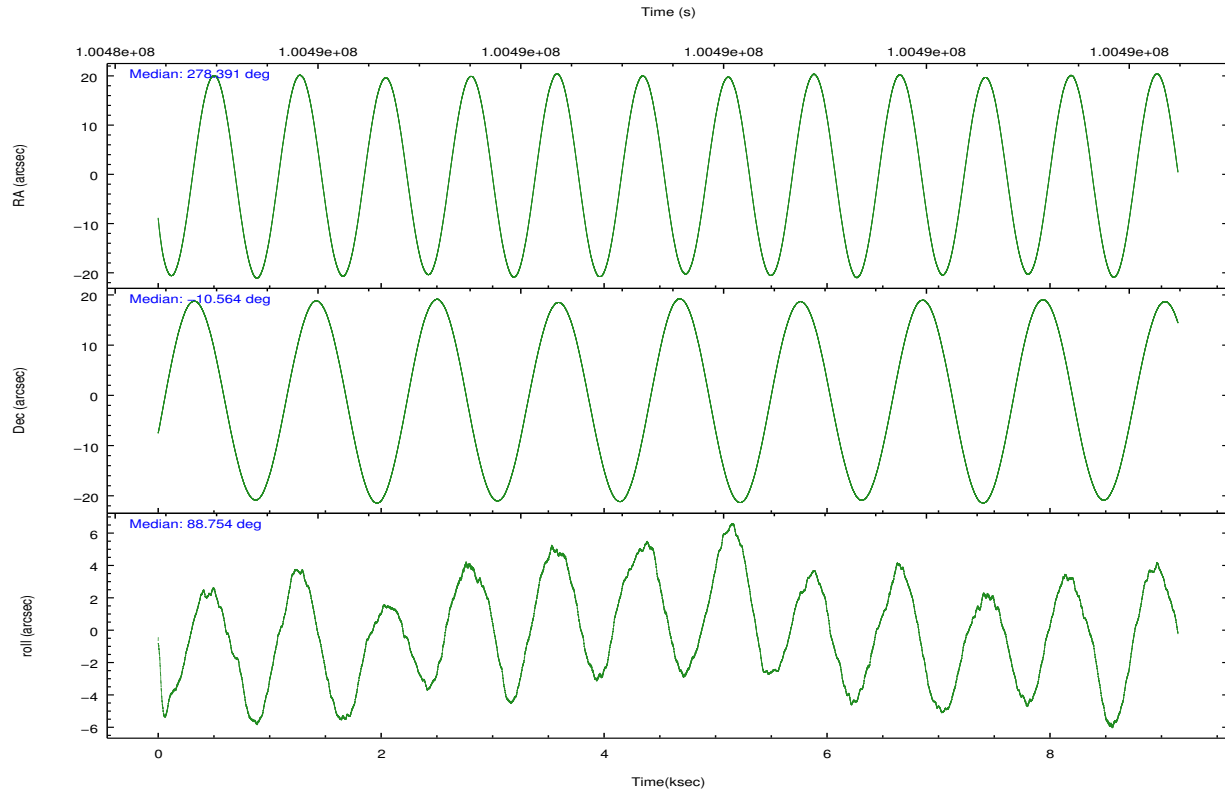
	segment 0
level 1 events	389969
rejected events	6984
rejected %	1%

2.2 Compared Parameters

Parameter	Planned	Actual	Parameter	Planned	Actual
Instrument	HRC	HRC	Obspar format version number	7	7
Detector	HRC-I	HRC-I	Obspar file type	PREDICTED	ACTUAL
Grating	NONE	NONE	Obspar update status	NONE	UPDATED
Data mode	OBSERVING	OBSERVING			
Observation mode	POINTING	POINTING			
[deg] Pointing RA	278.405122	278.3913884676302			
[deg] Pointing Dec	-10.588176	-10.56443332511854			
[deg] Pointing Roll	88.856474	88.7584595216954			
[s] Window start time (MET)	98582464.184000	98582464.184000			
[s] Window stop time (MET)	101001664.184000	101001664.184000			
[mm] SIM focus pos	-1.040293	-1.038866356238299			
[mm] SIM defocus	0	0.001426264420575141			
[mm] SIM translation stage pos	126.985494	126.9829799899862			
[mm] SIM translation stage offset	0	0.002508901615314585			
[s] Observation start time (MET)	100485028.184000	100484626.46168			
Observation start date	2001-03-09T00:29:24	2001-03-09T00:23:46			
[s] Observation end time (MET)	100494028.184000	100494164.59954			
Observation end date	2001-03-09T02:59:24	2001-03-09T03:02:44			

2.3 Aspect



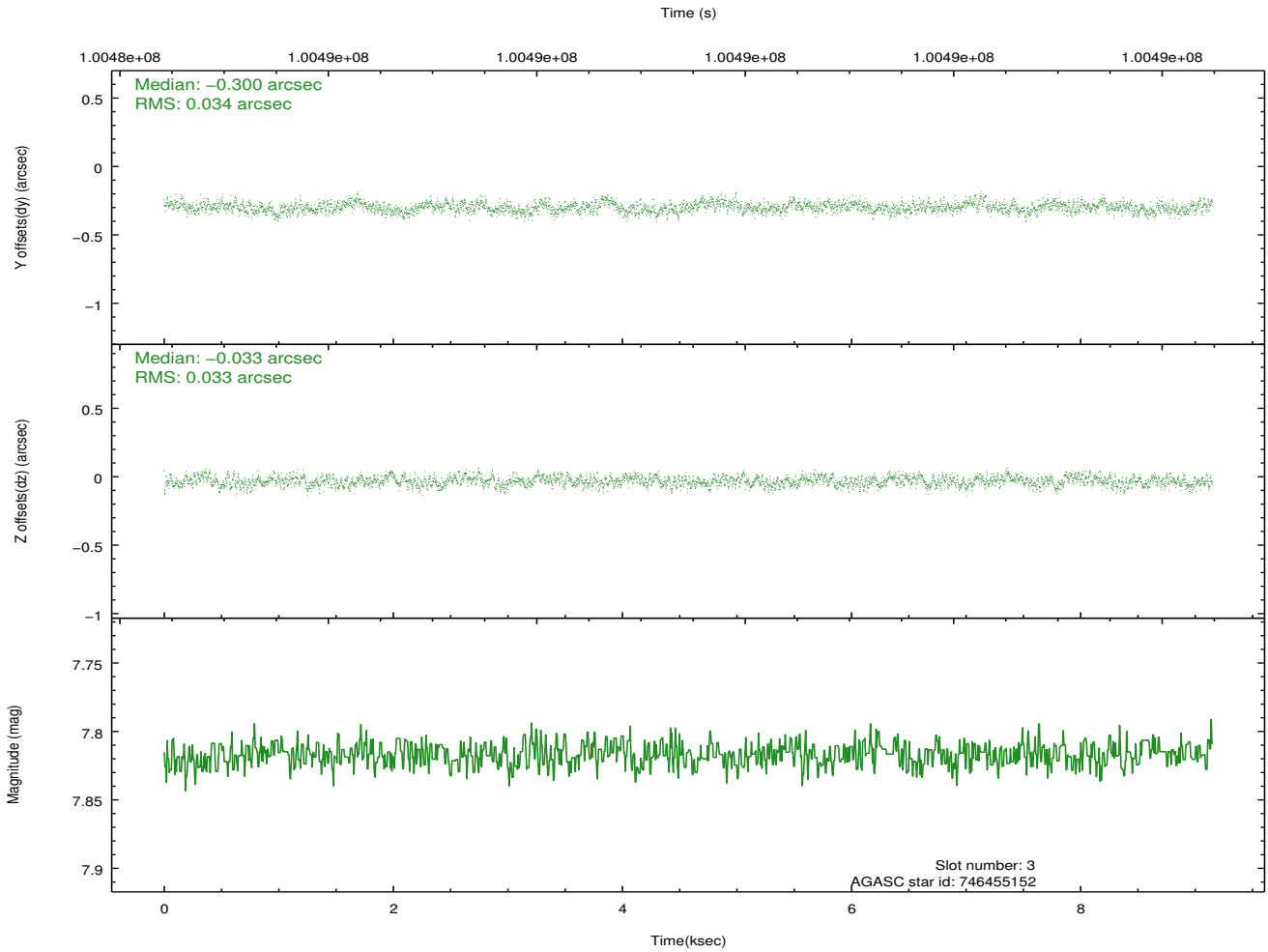
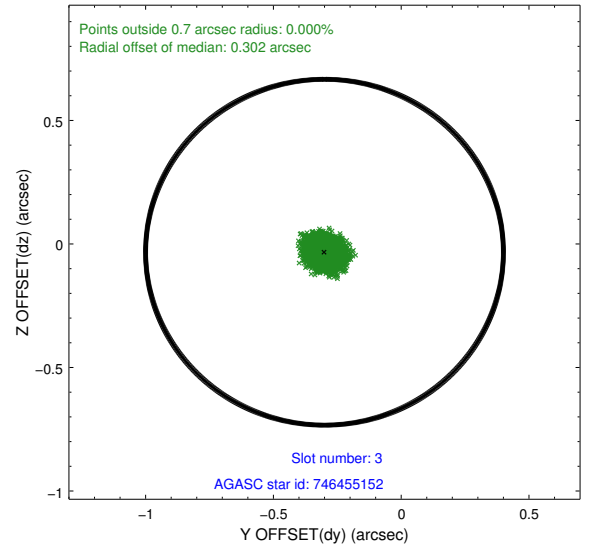
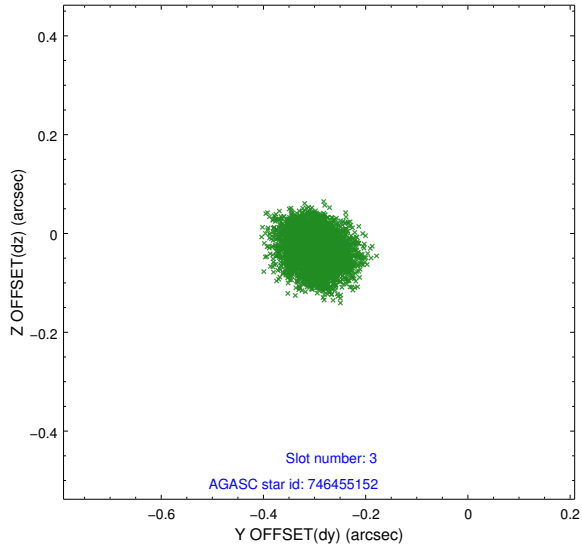


Slot Statistics

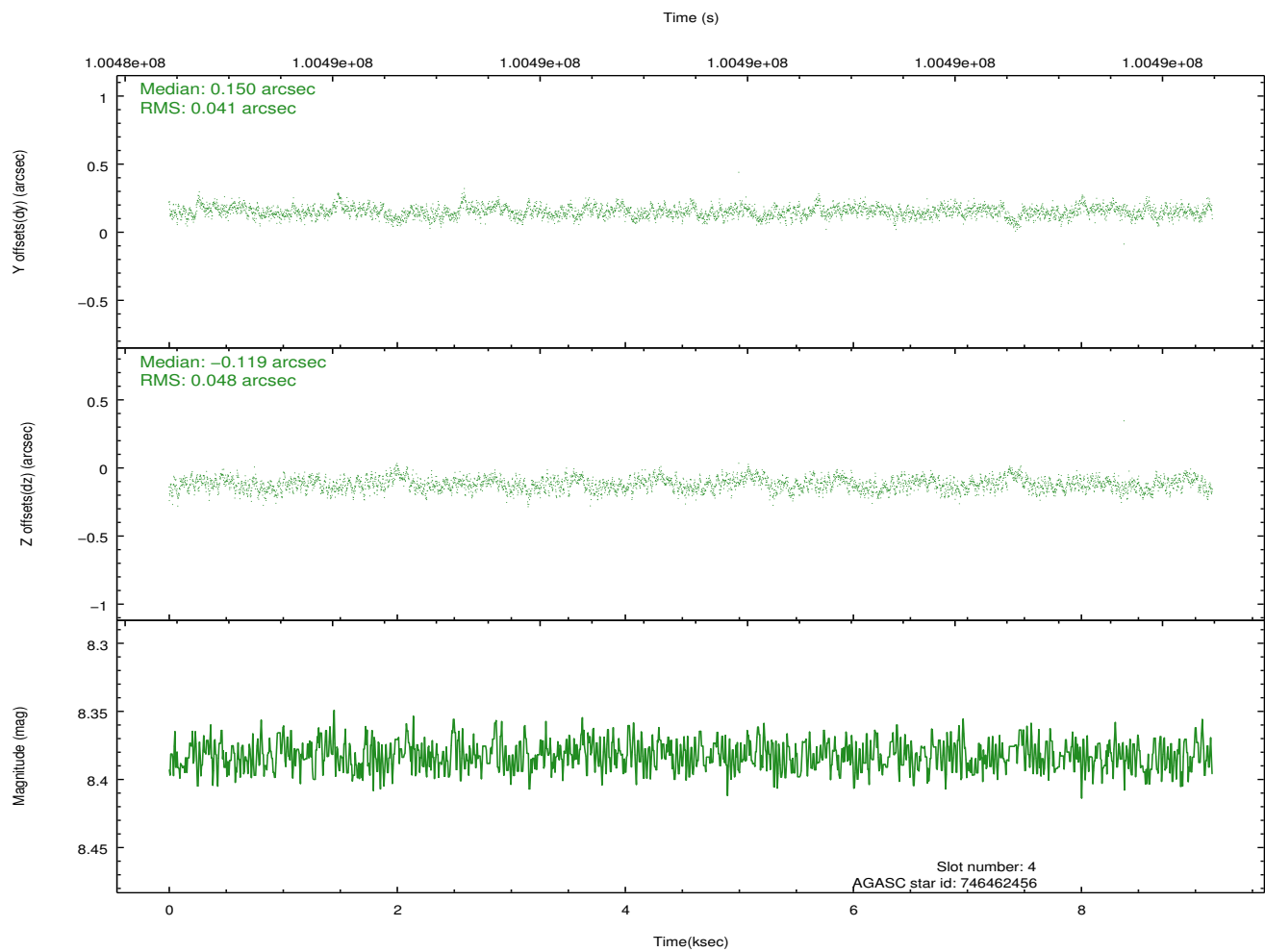
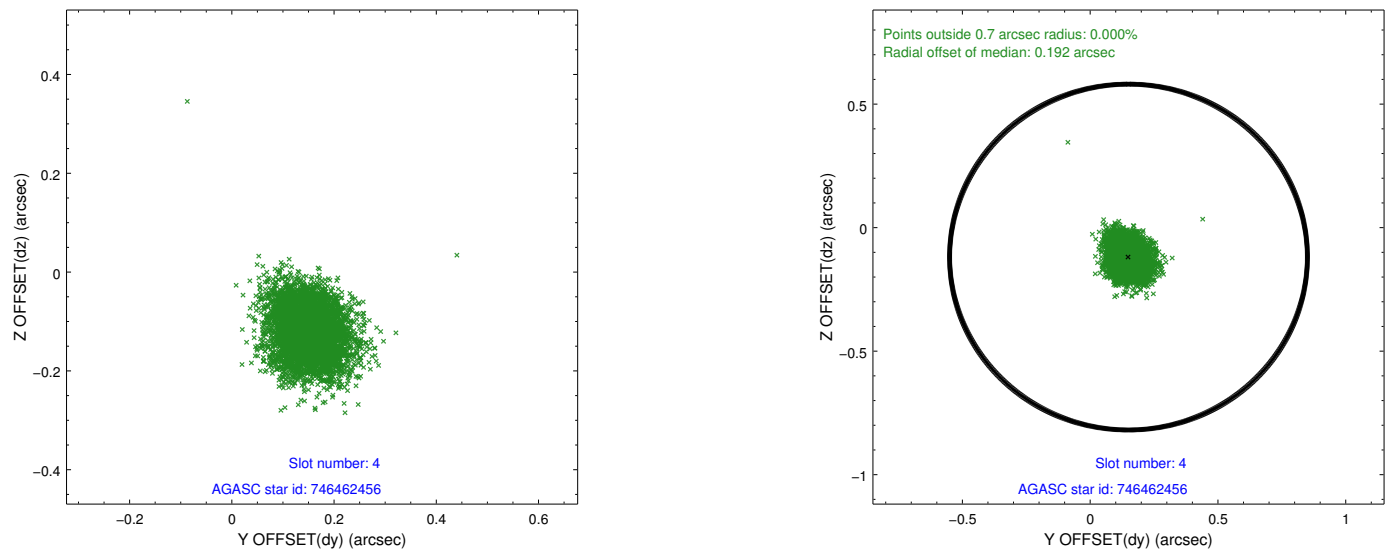
slot	status	id	mag	n_pts	med_dy	med_dz	dr1	dr2	ra	dec	mean_y	mean_z
0	FID	HRC-I-1	6.97	2232	0.026	0.029	0.007	0.012	0.000000	0.000000	-758.24	-1293.24
1	FID	HRC-I-3	7.06	2232	0.026	-0.088	0.007	0.013	0.000000	0.000000	-1187.07	1010.63
2	FID	HRC-I-4	7.00	2231	0.061	-0.030	0.006	0.009	0.000000	0.000000	1284.06	1009.32
3	GUIDE	746455152	7.82	4461	-0.300	-0.033	0.051	0.081	278.447893	-9.976732	2202.67	-107.78
4	GUIDE	746462456	8.38	4464	0.150	-0.119	0.068	0.109	278.652171	-10.530173	225.61	-870.44
5	GUIDE	746462392	8.54	4462	0.137	0.116	0.082	0.132	279.038421	-10.890715	-1047.26	-2260.70
6	GUIDE	746455112	8.94	4464	0.140	-0.004	0.075	0.123	278.266531	-10.703234	-424.93	481.05
7	GUIDE	746460272	8.94	4461	-0.127	0.047	0.071	0.115	278.847488	-10.152127	1598.77	-1535.95

2.4 Star Slots

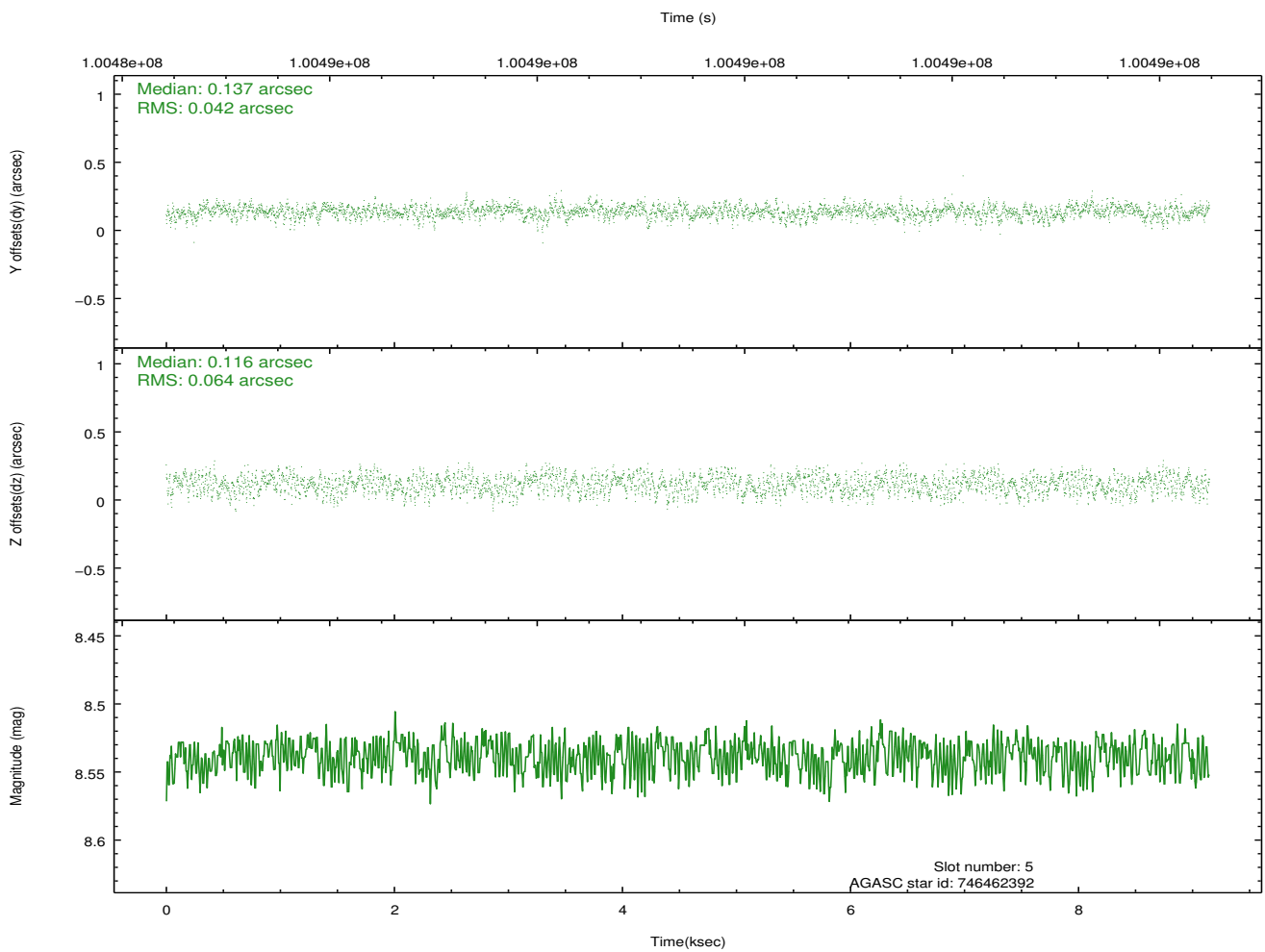
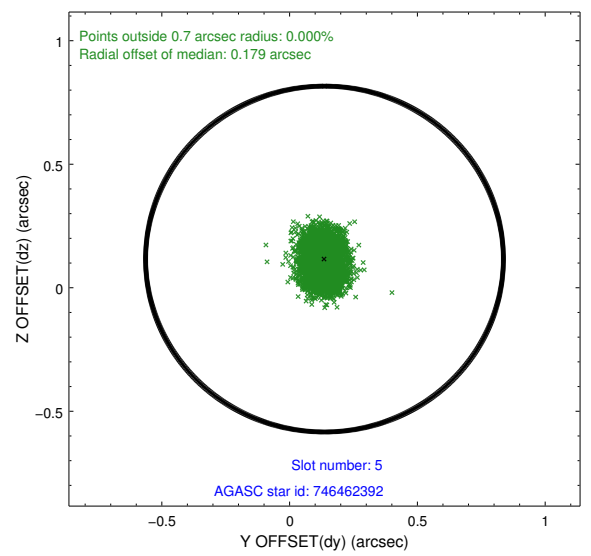
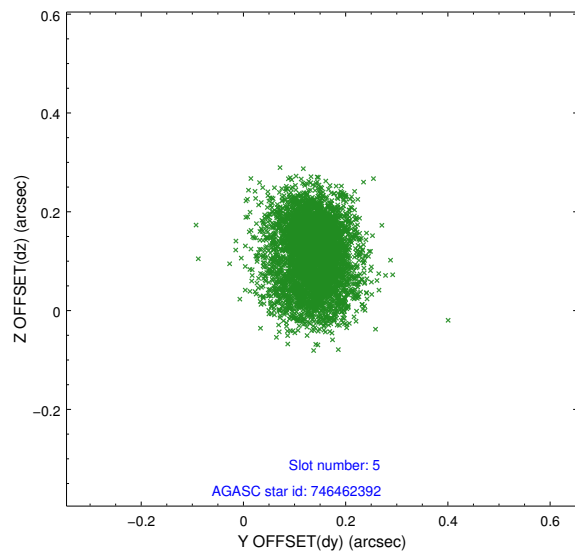
2.4.1 Slot 3



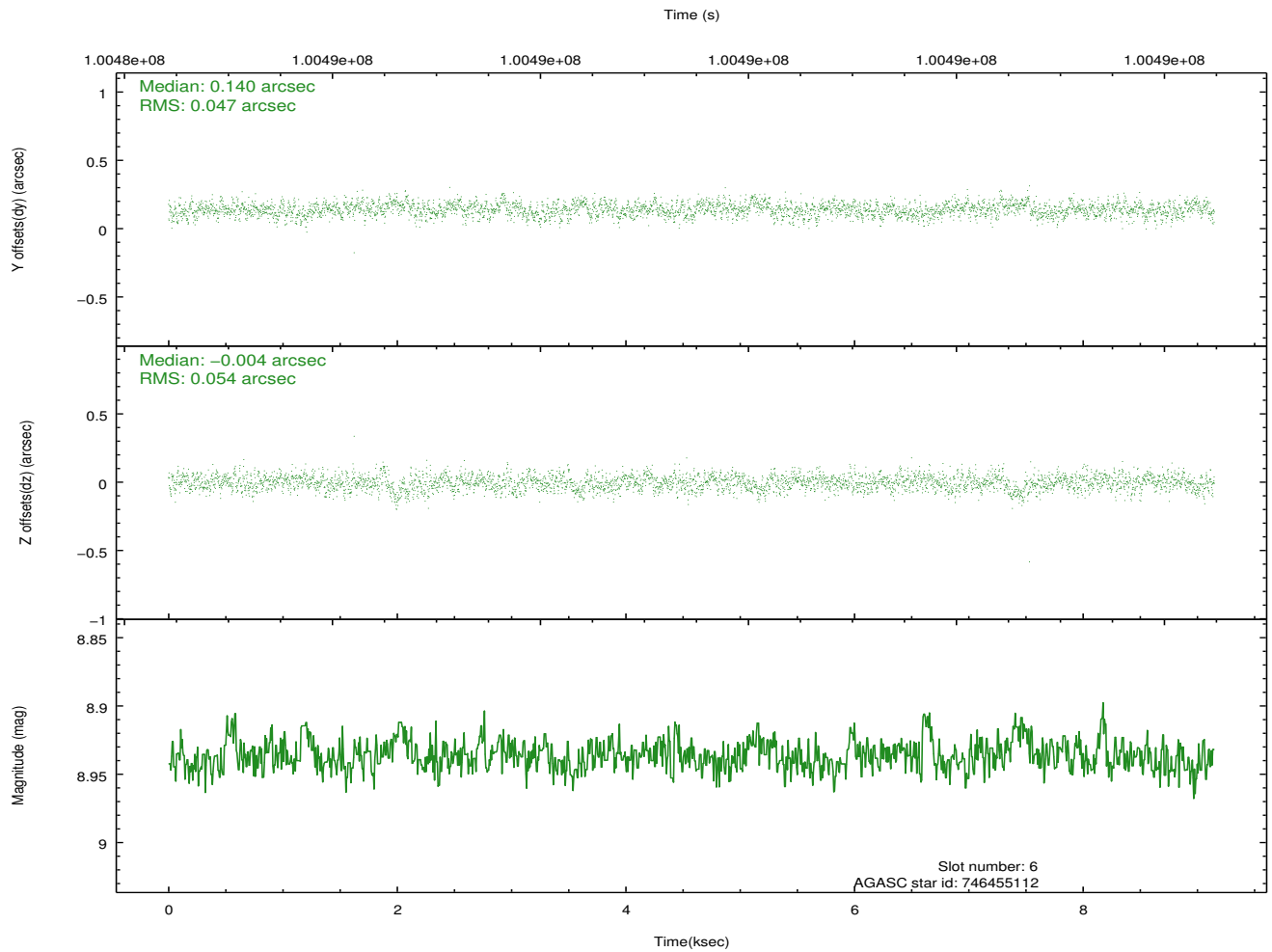
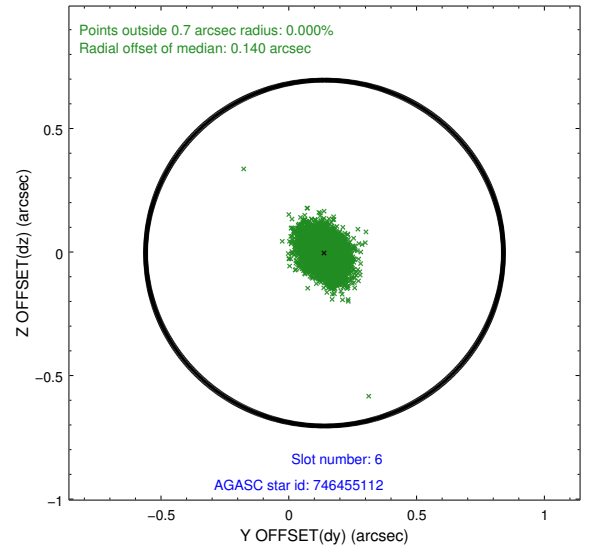
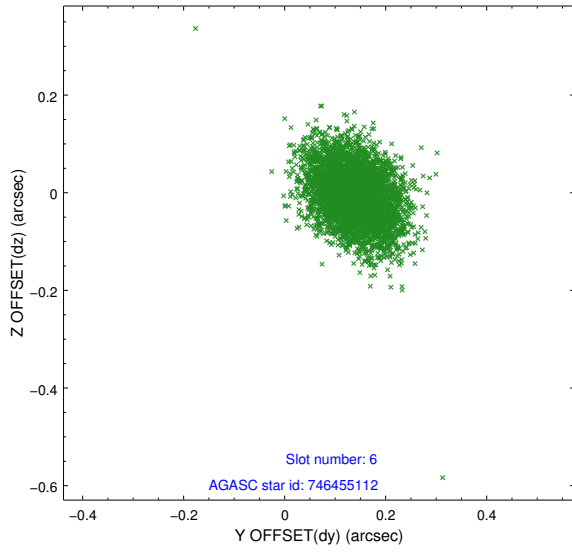
2.4.2 Slot 4



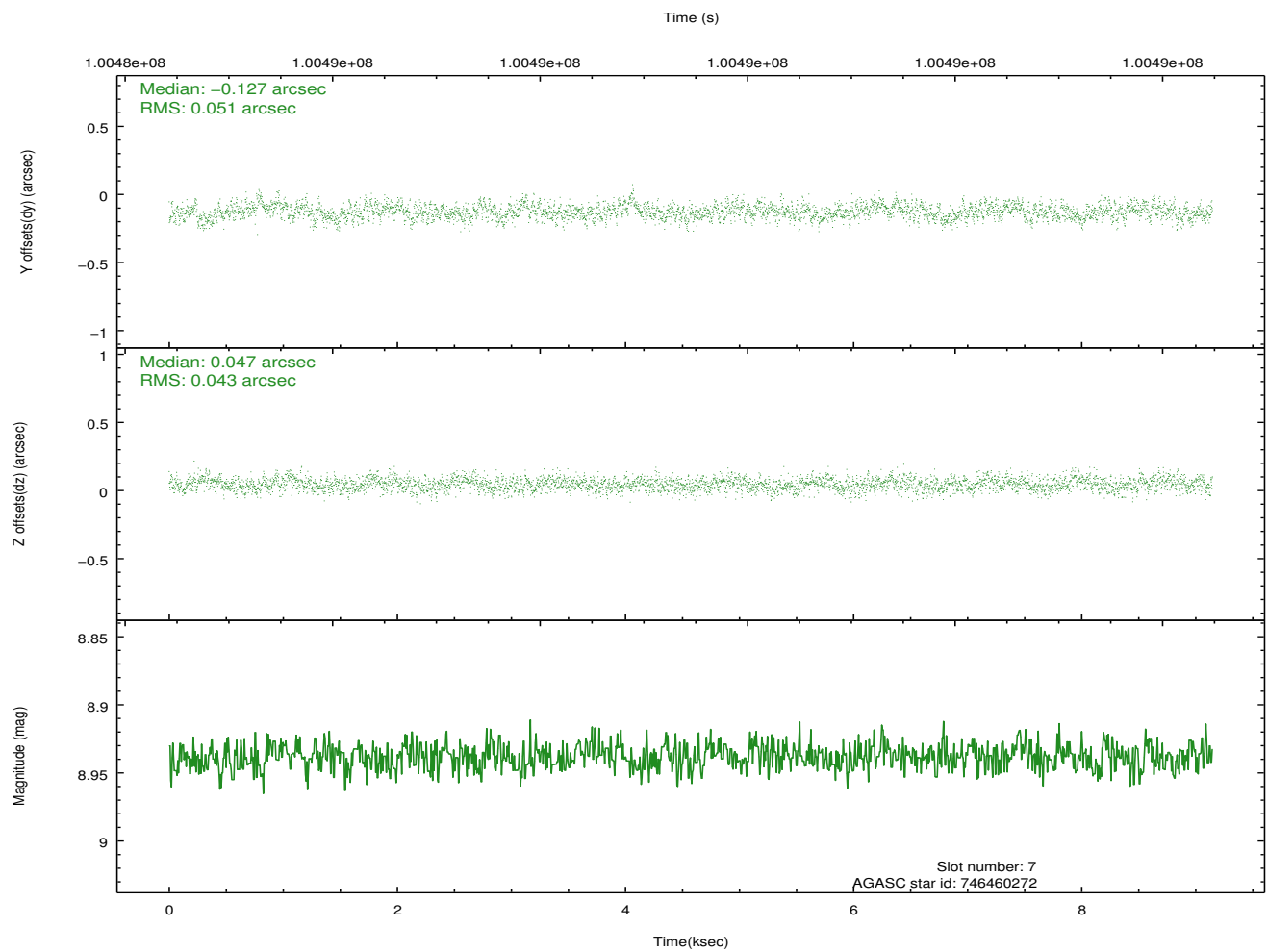
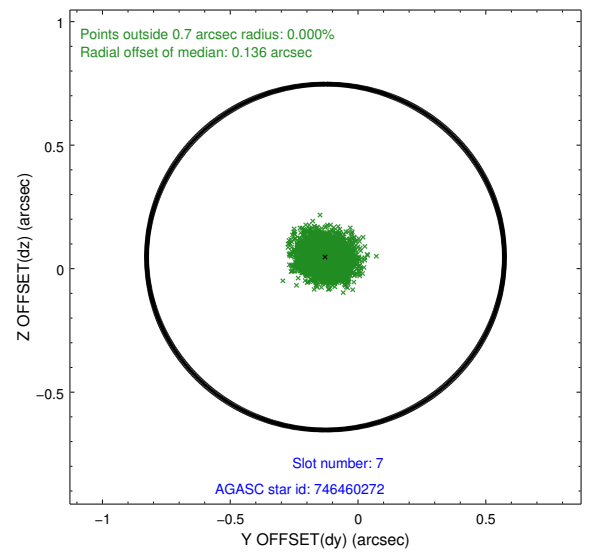
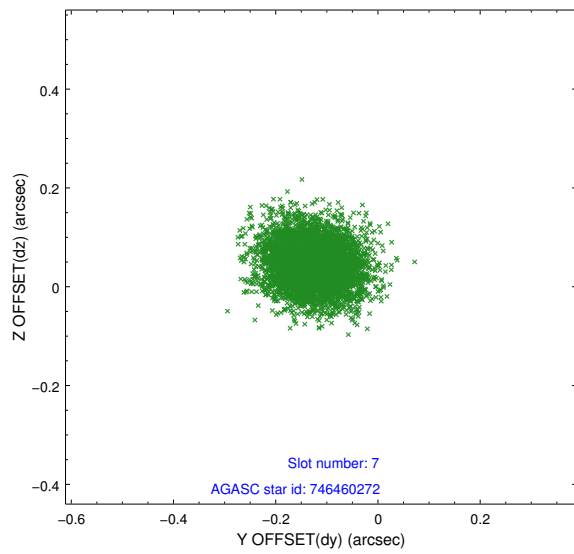
2.4.3 Slot 5



2.4.4 Slot 6

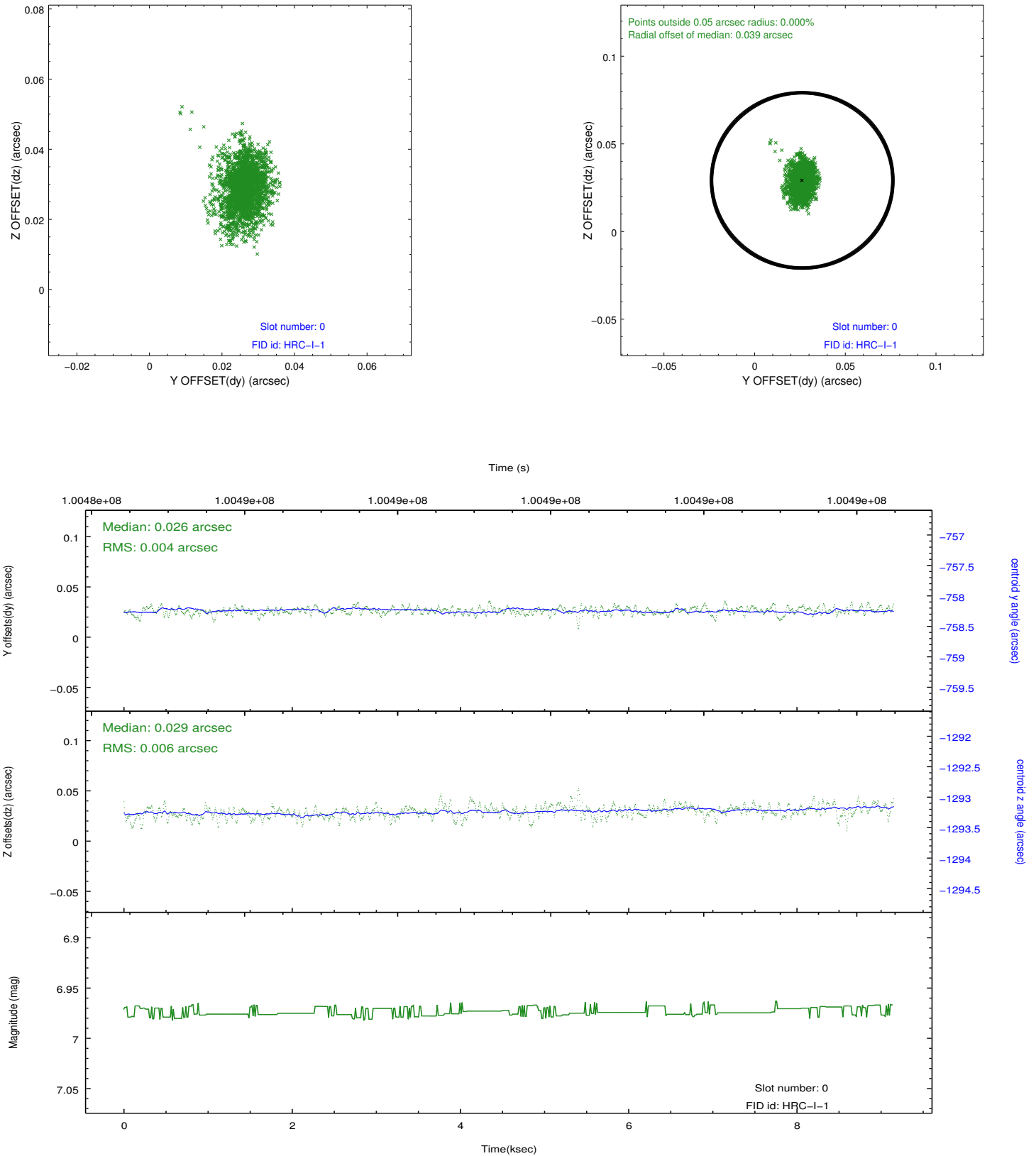


2.4.5 Slot 7

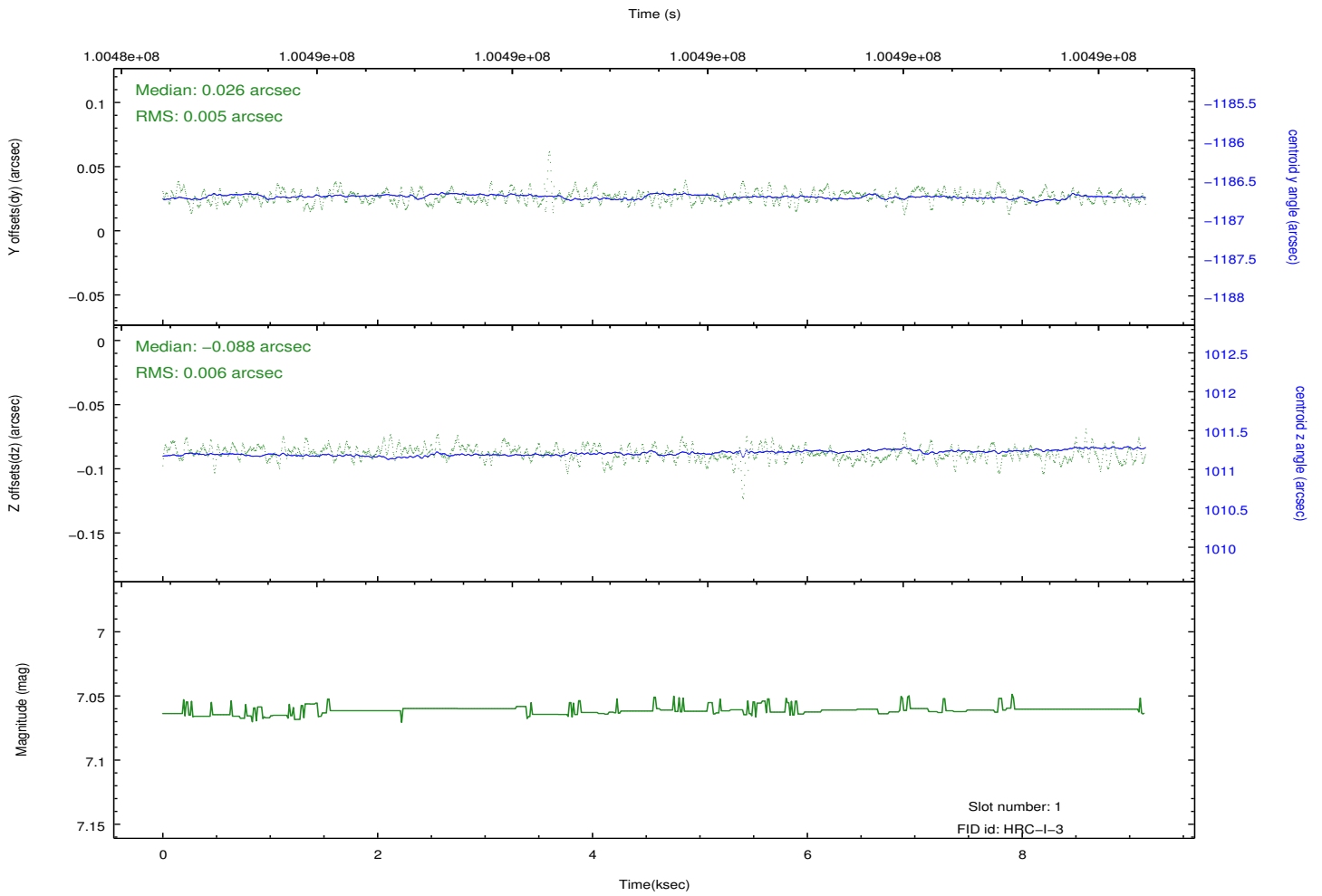
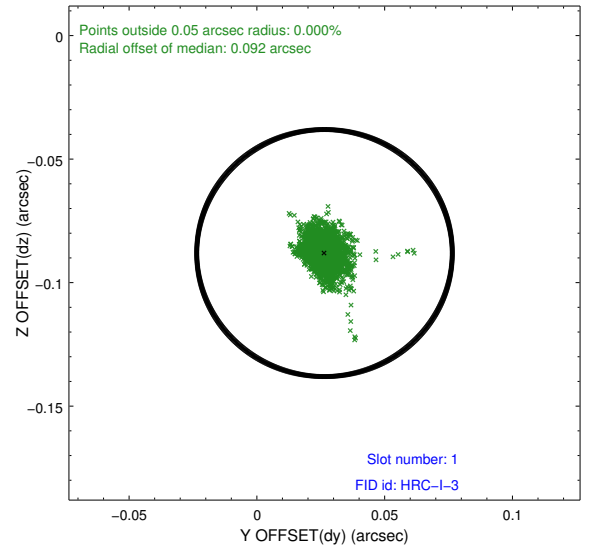
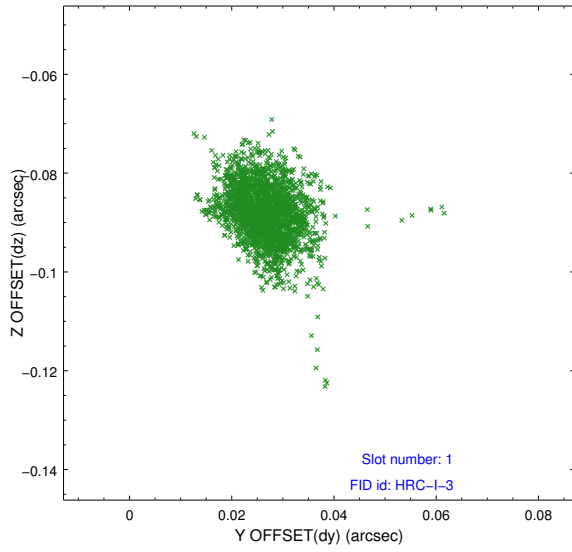


2.5 FID Slots

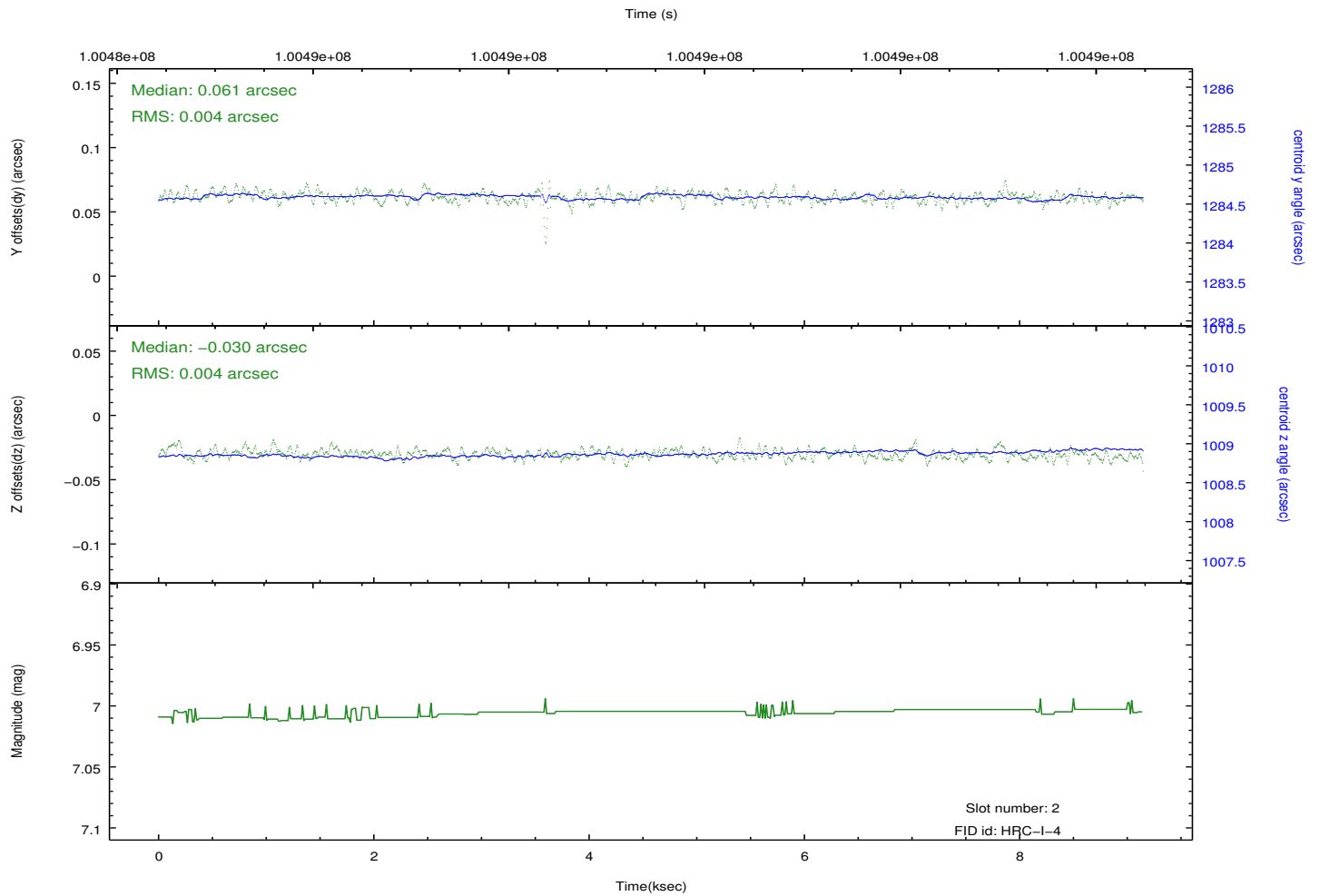
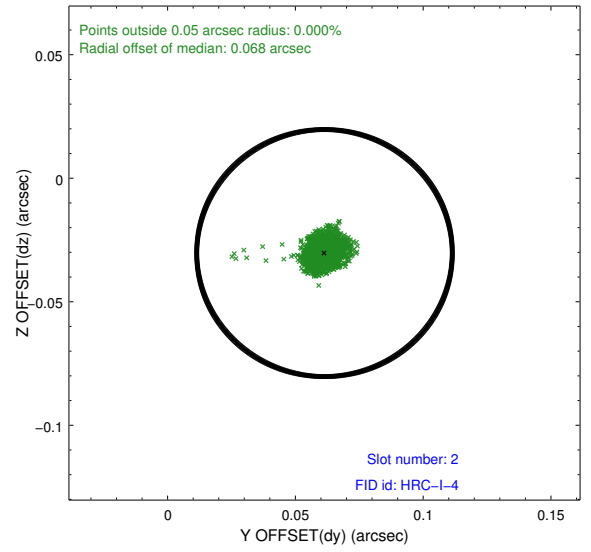
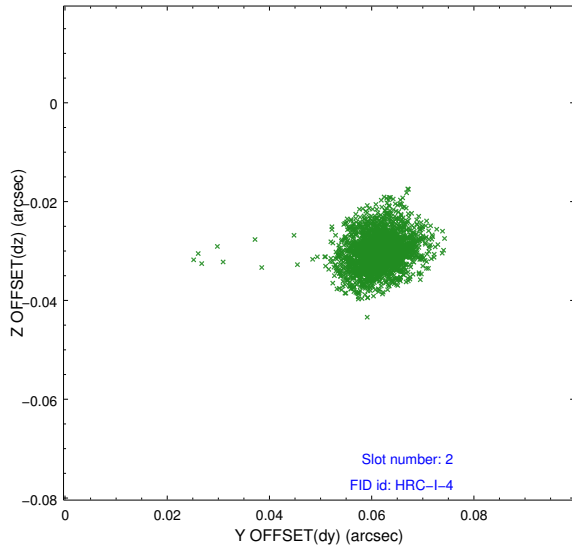
2.5.1 Slot 0



2.5.2 Slot 1



2.5.3 Slot 2



A Summary

A.1 Status

V&V Scientist	Beth Sundheim
V&V Date (YYYY-MM-DD)	2012.09.17
V&V Edition	1
V&V Disposition and Status	OK
V&V Charge Time	8.981

A.2 Comments

Window preference met.