

V&V Reference Report

L2 ASCDS Version : 10.2.4

Observation 15635 - L2 Version 1
Chandra X-Ray Center

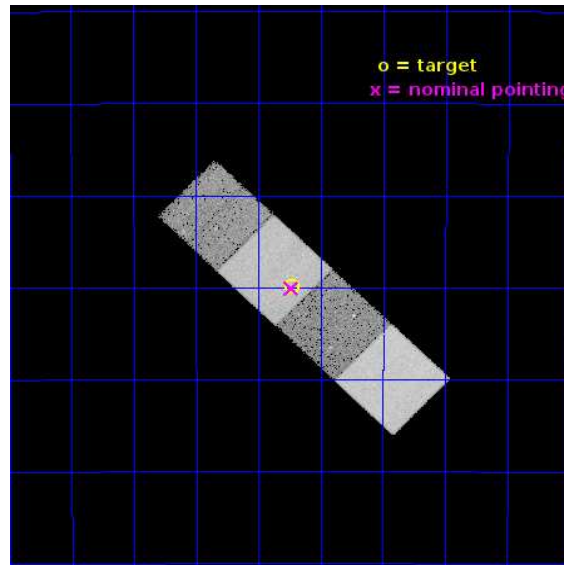
L2 Processing Date : Sep 5 2014

Contents

1	Front	2
2	OBI	3
2.1	OBI	3
2.1.1	Images	3
2.1.2	Bias	3
2.1.3	Parameters	4
2.1.4	Events	4
2.2	Compared Parameters	5
2.3	Aspect	6
2.4	Star Slots	9
2.4.1	Slot 3	9
2.4.2	Slot 4	10
2.4.3	Slot 5	11
2.4.4	Slot 6	12
2.4.5	Slot 7	13
2.5	FID Slots	14
2.5.1	Slot 0	14
2.5.2	Slot 1	15
2.5.3	Slot 2	16
A	Summary	17
A.1	Status	17
A.2	Comments	17

1 Front

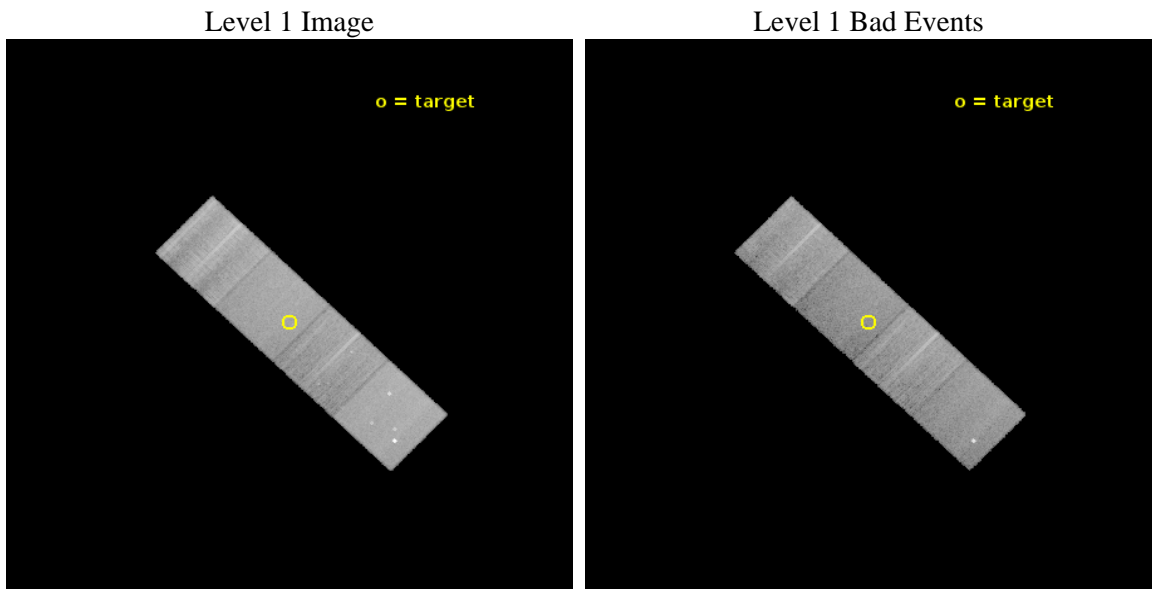
seq_num	502036	Sequence number
obs_id	15635	Observation id
title	A Study of Massive Star Evolution and Mass Loss With Multi-Wavelength Observations of Type II _n Supernovae	Proposal title
observer	Dr. Ori Fox	Principal investigator
object	SN 2011fh	Source name
dtcycle	0	
cycle	P	events from which exps? Prim/Second/Both
ra_targ	194.058	Observer's specified target RA [deg]
dec_targ	-29.4986	Observer's specified target Dec [deg]
ra_nom	194.0586825623	Nominal RA [deg]
dec_nom	-29.501668819342	Nominal Dec [deg]
roll_nom	223.95984382192	Nominal Roll [deg]
revision	1	Processing version of data
ontime	20069.312713265	Sum of GTIs [s]
livetime	19807.092367854	Livetime [s]
ontime5	20069.271673262	Sum of GTIs [s]
ontime6	20069.230633259	Sum of GTIs [s]
ontime7	20069.312713265	Sum of GTIs [s]
ontime8	20069.189593256	Sum of GTIs [s]
l2events	191424	Number of level 2 events



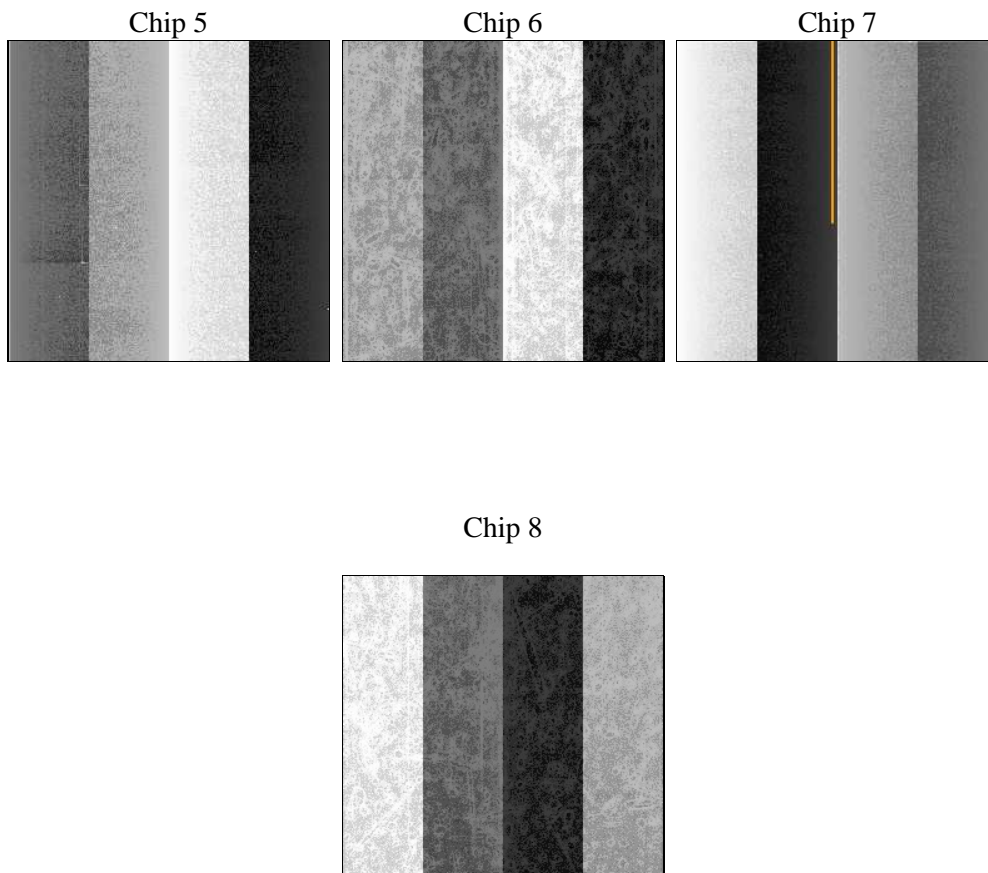
2 OBI

2.1 OBI

2.1.1 Images



2.1.2 Bias



2.1.3 Parameters

obi_num	0	Obi number	sched_exp_time	20000.000000	[s] Scheduled observation exposure time
ascdsver	10.2.4	Processing system revision	ontime	20069.312713265	Sum of GTIs [s]
caldsver	4.6.3	 	ontime5	20069.271673262	Sum of GTIs [s]
date	2014-09-05T14:20:28	Date and time of file creation	ontime6	20069.230633259	Sum of GTIs [s]
revision	1	Processing version of data	ontime7	20069.312713265	Sum of GTIs [s]
			ontime8	20069.189593256	Sum of GTIs [s]
			l1events	661365	Number of level 1 events

2.1.4 Events

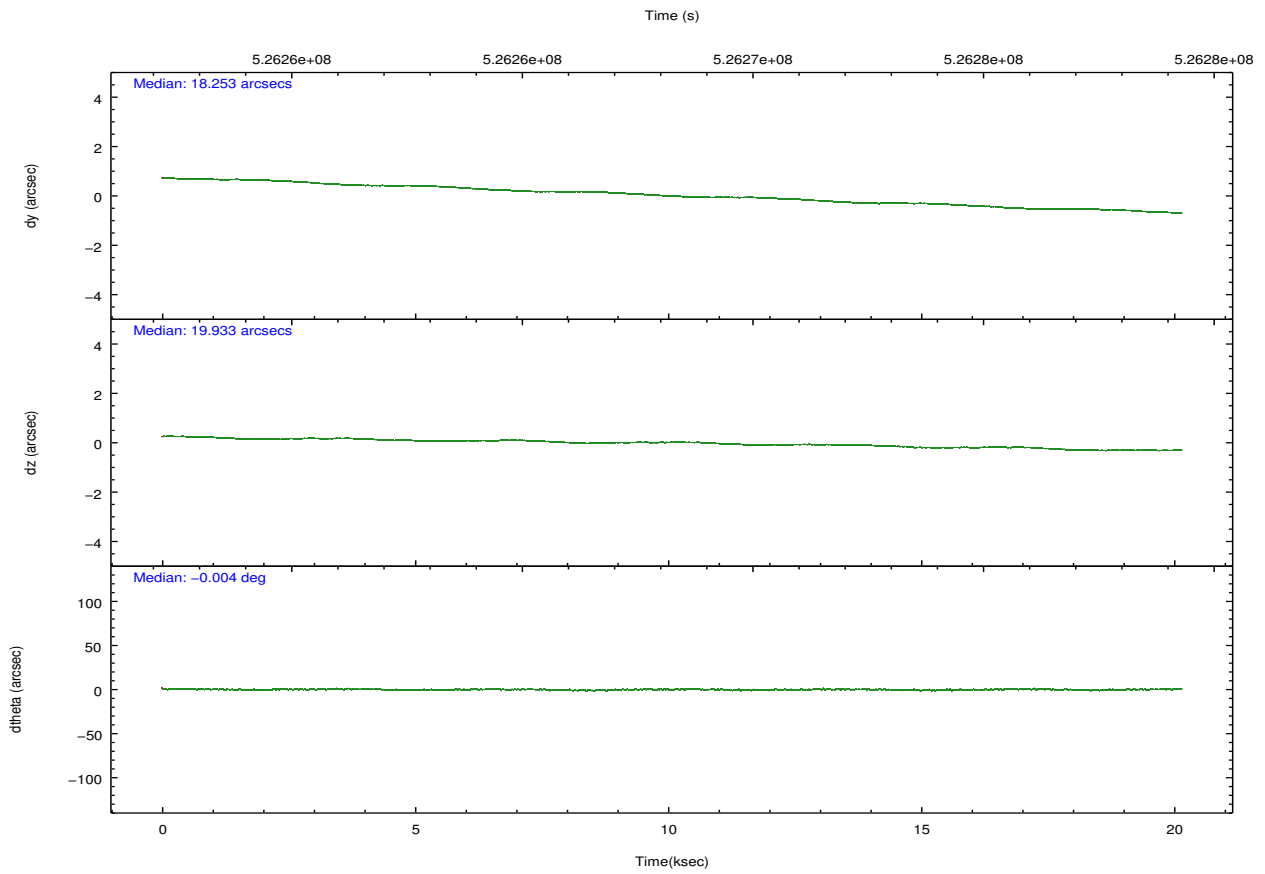
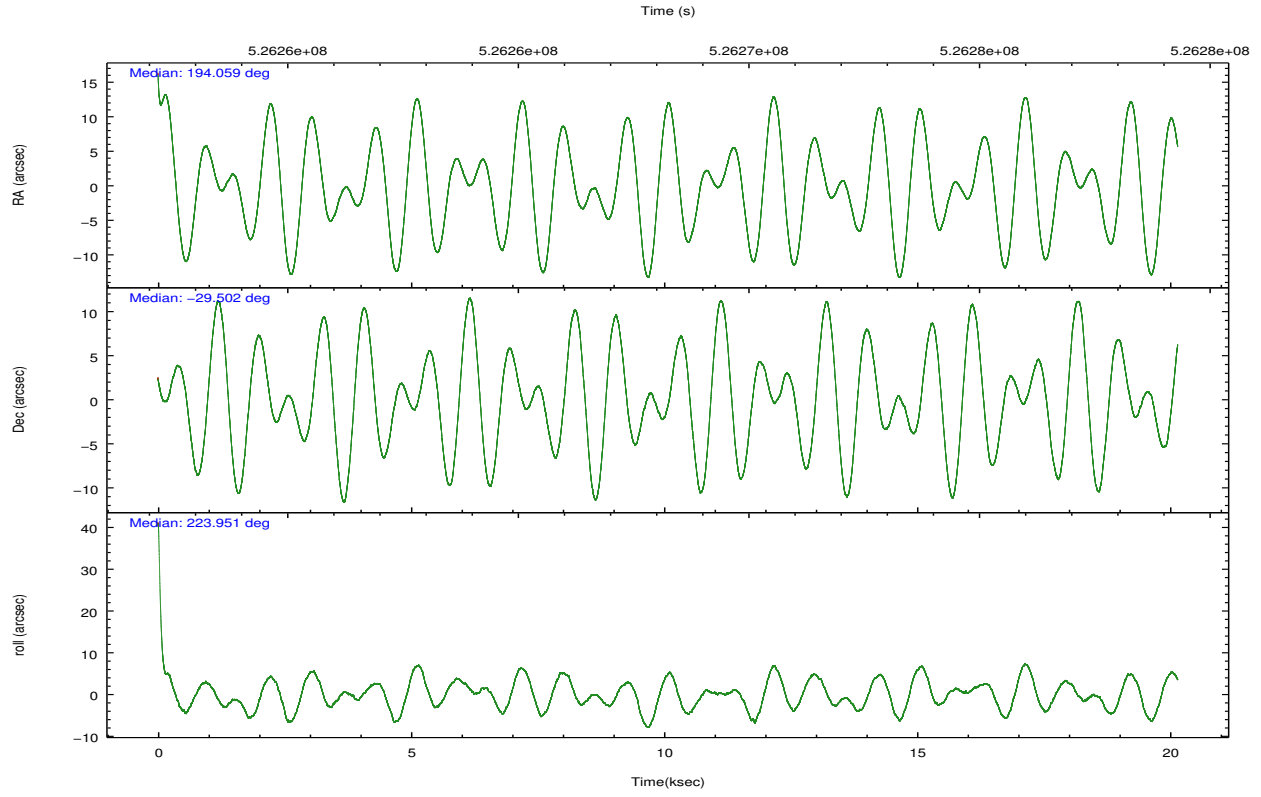
	ccd 5	ccd 6	ccd 7	ccd 8
level 1 events	195946	130114	154573	180732
rejected events	97017	114017	82407	119689
rejected %	49%	87%	53%	66%

	ccd 5	ccd 6	ccd 7	ccd 8
grade 0 events	9525	6210	6879	19760
	4%	4%	4%	10%
grade 1 events	458	75	213	145
	0%	0%	0%	0%
grade 2 events	33133	3534	15494	13510
	16%	2%	10%	7%
grade 3 events	3753	1528	6274	6920
	1%	1%	4%	3%
grade 4 events	3563	1512	6241	6578
	1%	1%	4%	3%
grade 5 events	14317	5558	15599	8487
	7%	4%	10%	4%
grade 6 events	48993	3320	37295	14299
	25%	2%	24%	7%
grade 7 events	82204	108377	66578	111033
	41%	83%	43%	61%

2.2 Compared Parameters

Parameter	Planned	Actual	Parameter	Planned	Actual
Instrument	ACIS	ACIS	Obspar format version number	7	7
Detector	ACIS-5678	ACIS-5678	Obspar file type	PREDICTED	ACTUAL
Grating	NONE	NONE	Obspar update status	NONE	UPDATED
Data mode	VFAINT	VFAINT	Number of optional ACIS chips dropped	0	0
Observation mode	POINTING	POINTING	On-chip summing requested	N	N
[deg] Pointing RA	194.066957	194.0586825622958	Subarray requested	NONE	NONE
[deg] Pointing Dec	-29.475184	-29.50166881934167	Alternating exposures requested	N	N
[deg] Pointing Roll	223.807273	223.9598438219237	[s] Primary exposure time	0.000000	3.1
[mm] SIM focus pos	-0.684267	-0.6828225247311905			
[mm] SIM defocus	0	0.001444936568705701			
[mm] SIM translation stage pos	-190.132523	-190.1400660498719			
[mm] SIM translation stage offset	0	0.00754346686406393			
[s] Observation start time (MET)	526258313.184000	526257136.98452			
Observation start date	2014-09-04T22:50:46	2014-09-04T22:32:16			
[s] Observation end time (MET)	526278313.184000	526279183.71074			
Observation end date	2014-09-05T04:24:06	2014-09-05T04:39:43			
Read mode	TIMED	TIMED			

2.3 Aspect

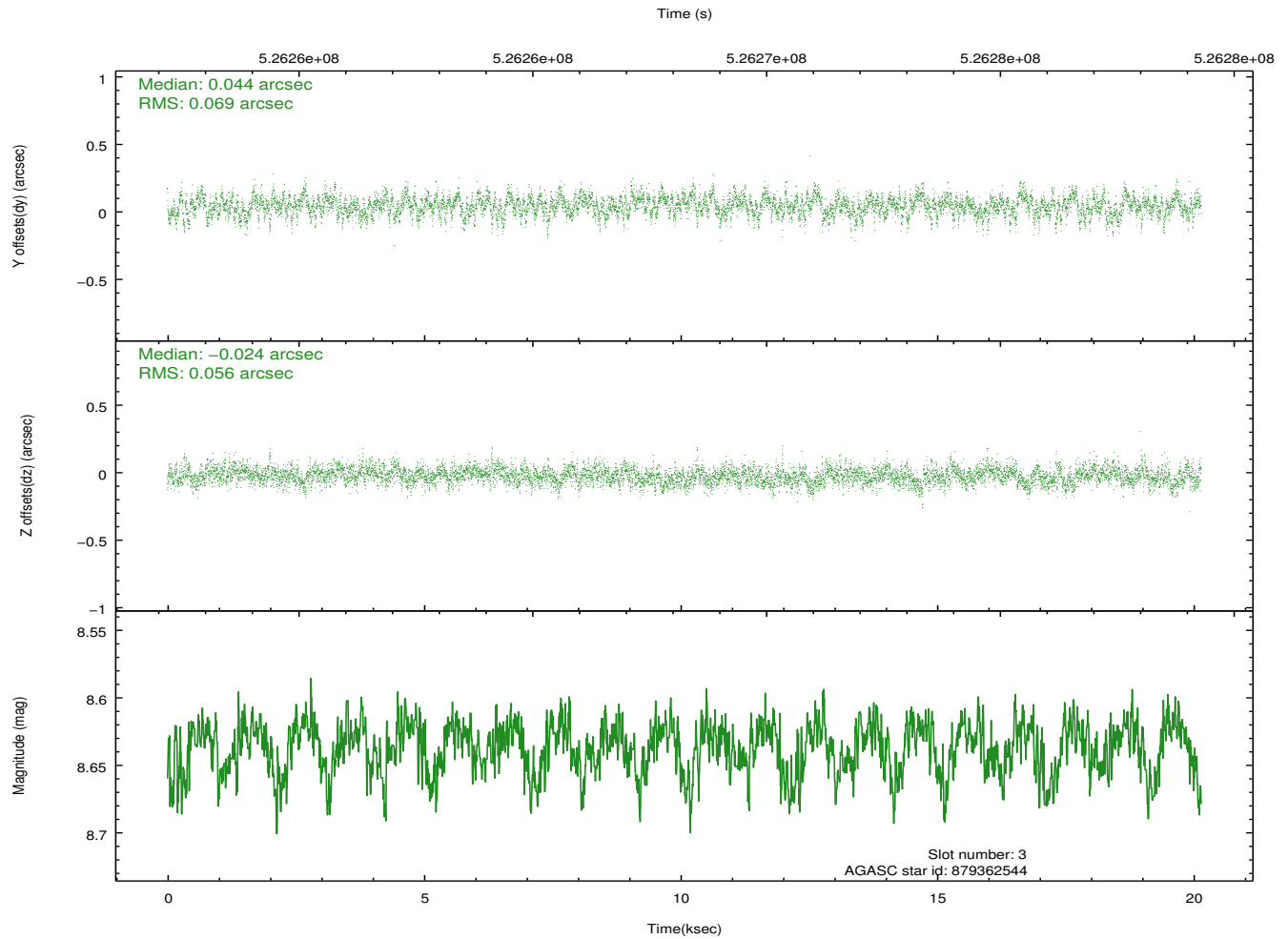
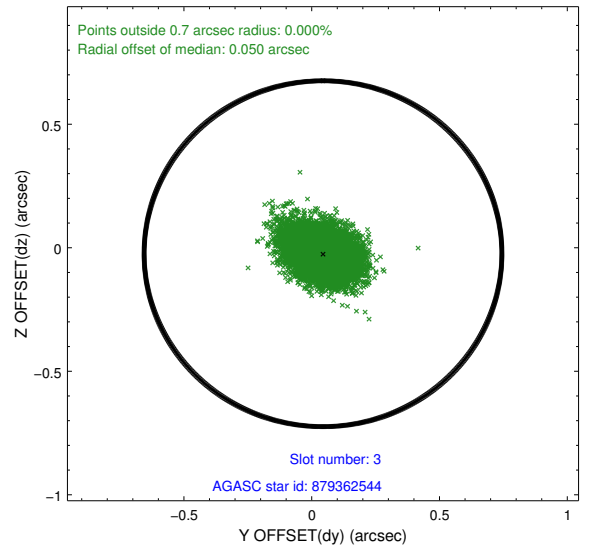
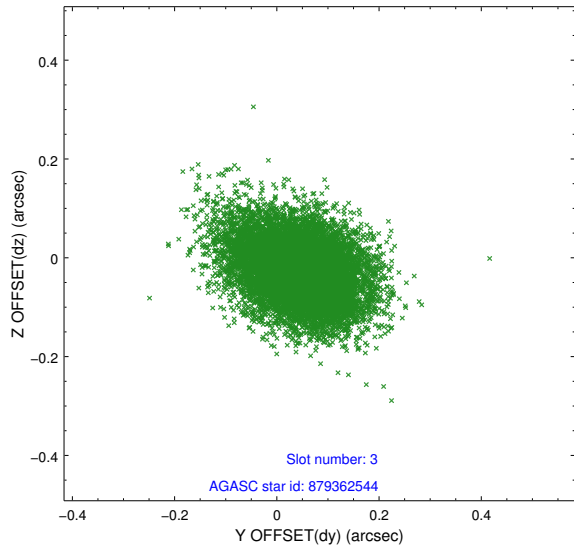


Slot Statistics

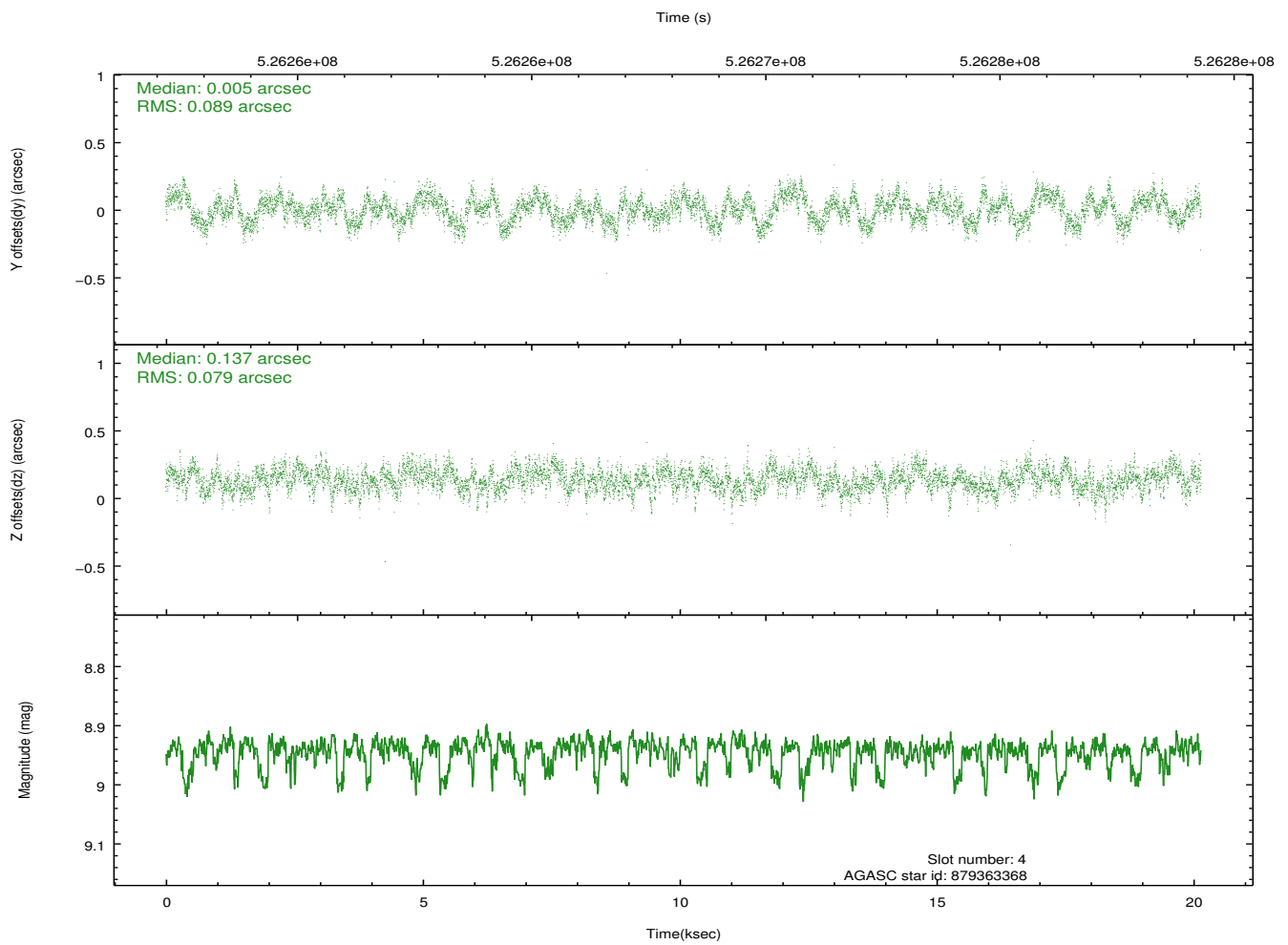
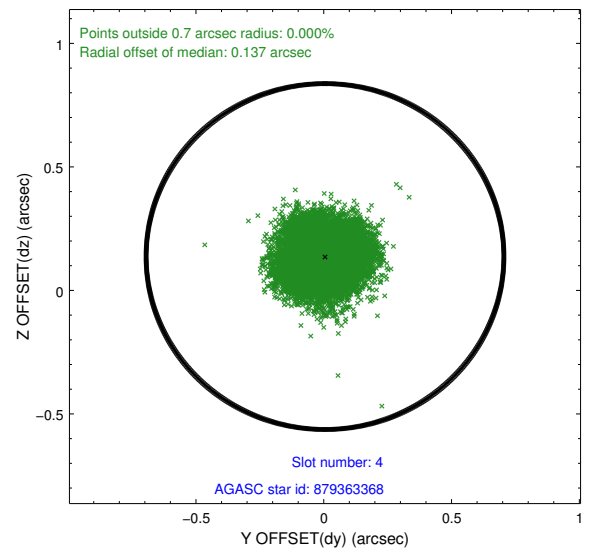
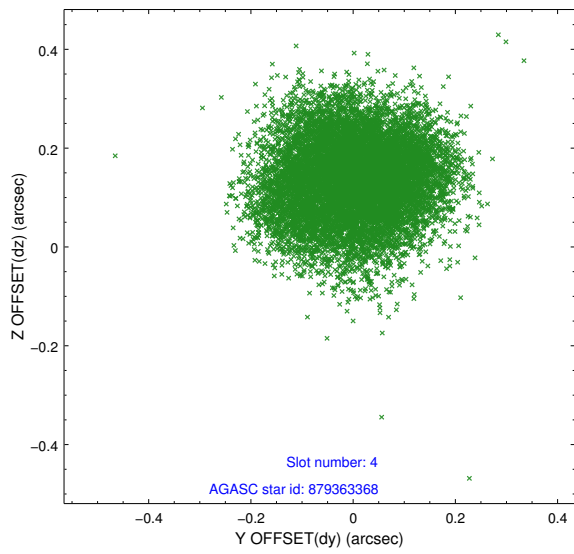
slot	status	id	mag	n_pts	med_dy	med_dz	dr1	dr2	ra	dec	mean_y	mean_z
0	FID	ACIS-S-2	6.92	4916	-0.115	0.001	0.011	0.017	0.000000	0.000000	-771.45	-1741.42
1	FID	ACIS-S-4	7.01	4916	0.247	0.056	0.011	0.021	0.000000	0.000000	2142.10	166.93
2	FID	ACIS-S-5	7.04	4915	-0.161	-0.047	0.011	0.017	0.000000	0.000000	-1824.10	160.70
3	GUIDE	879362544	8.64	9829	0.044	-0.024	0.092	0.156	193.151674	-29.493997	2125.37	-1927.98
4	GUIDE	879363368	8.94	9826	0.005	0.137	0.129	0.198	193.355088	-29.318430	1227.78	-1948.98
5	GUIDE	879495944	8.48	9830	-0.067	0.026	0.084	0.139	194.857445	-29.476959	-1777.51	1725.29
6	GUIDE	879500408	8.27	9828	0.060	-0.015	0.065	0.105	194.779044	-29.537164	-1450.47	1709.93
7	GUIDE	950142824	7.34	9765	-0.040	-0.124	0.083	0.133	193.885222	-30.070108	1891.43	1154.65

2.4 Star Slots

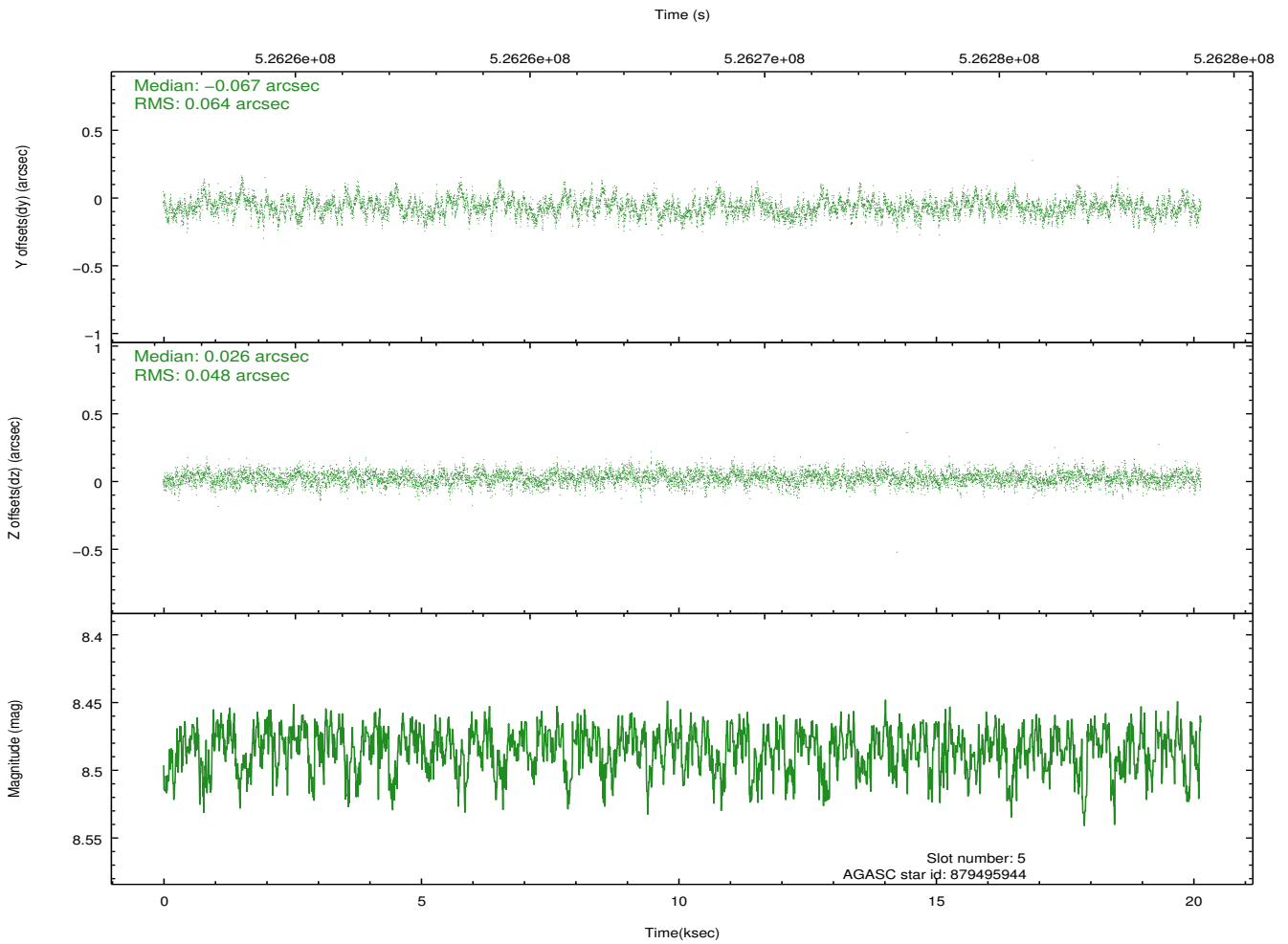
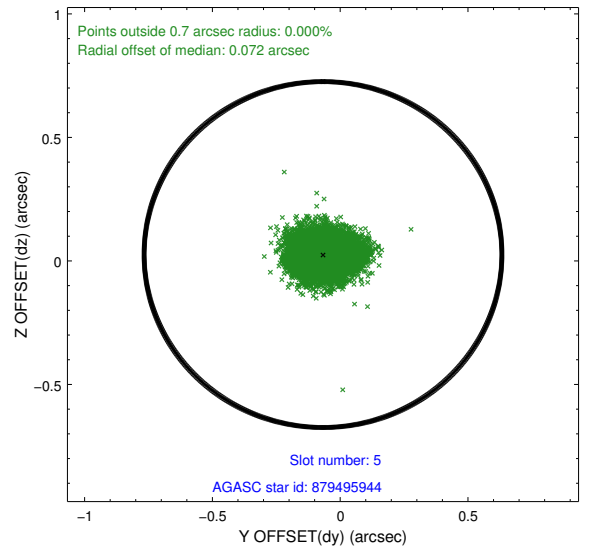
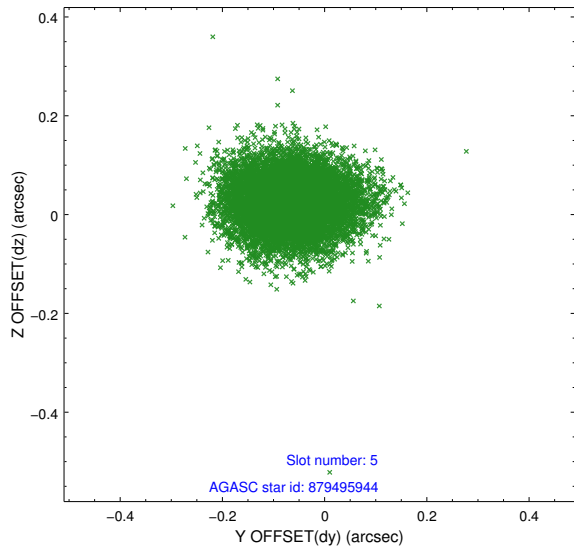
2.4.1 Slot 3



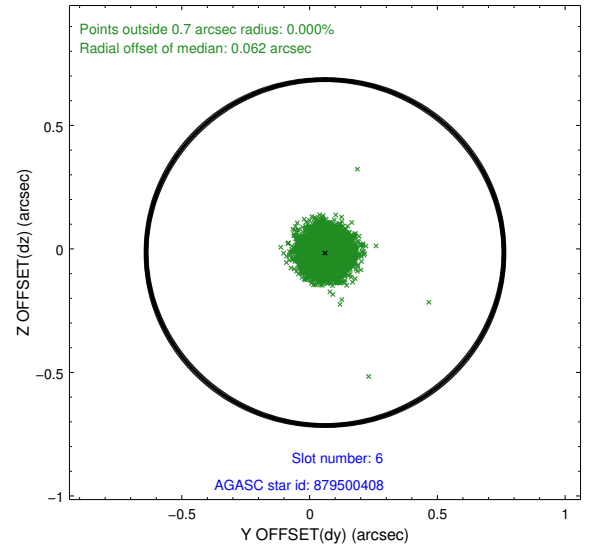
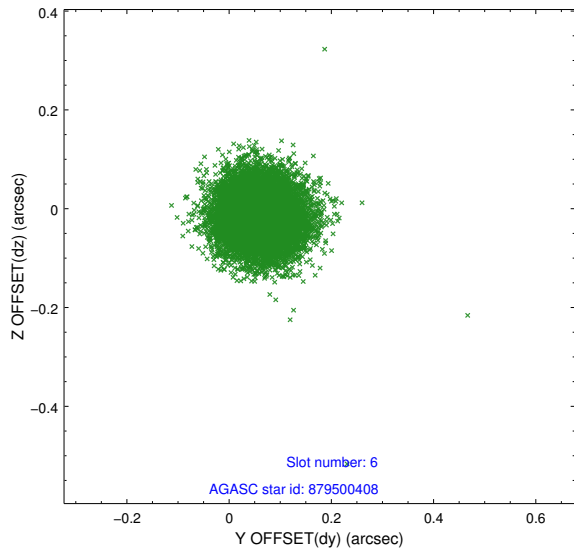
2.4.2 Slot 4



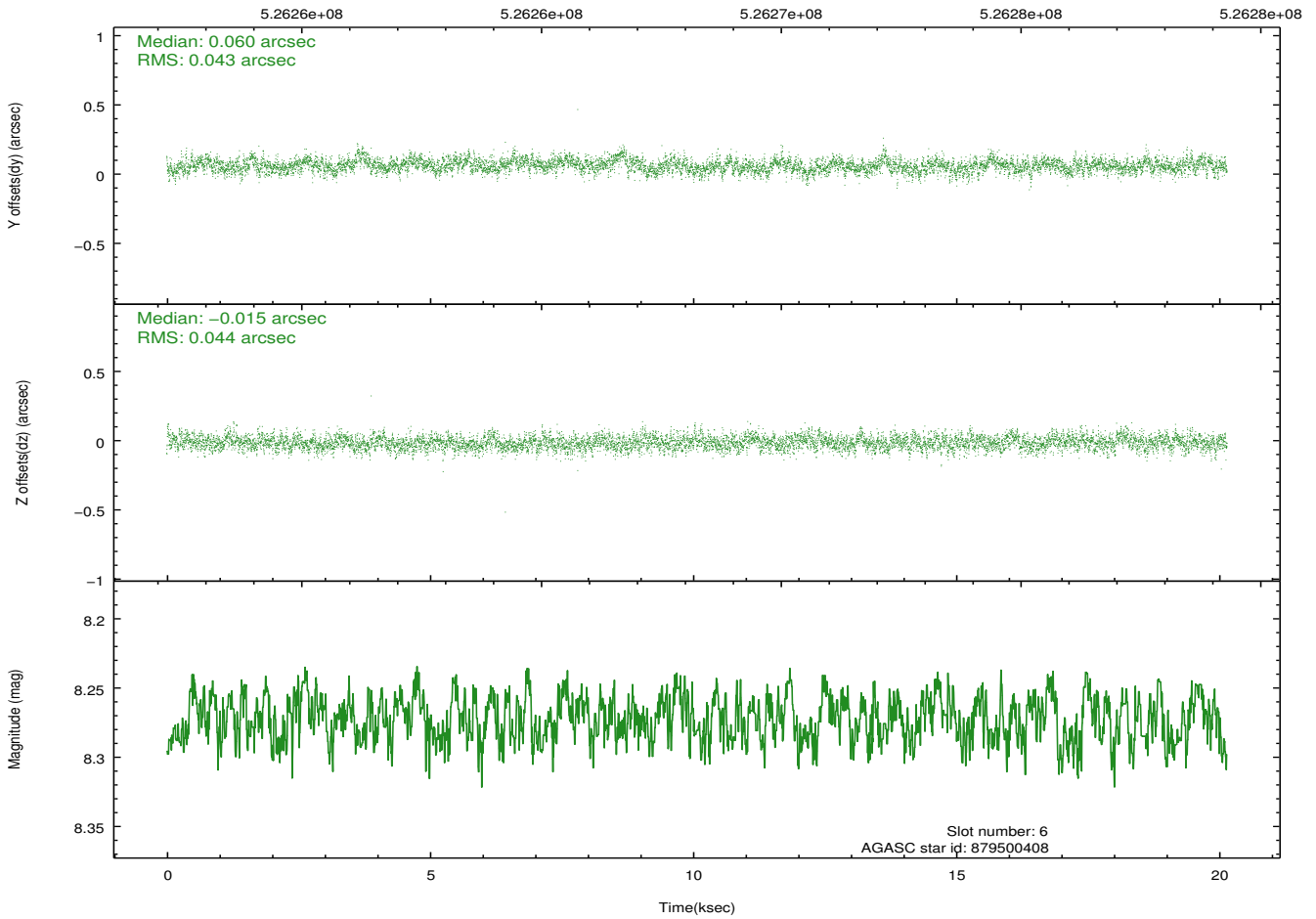
2.4.3 Slot 5



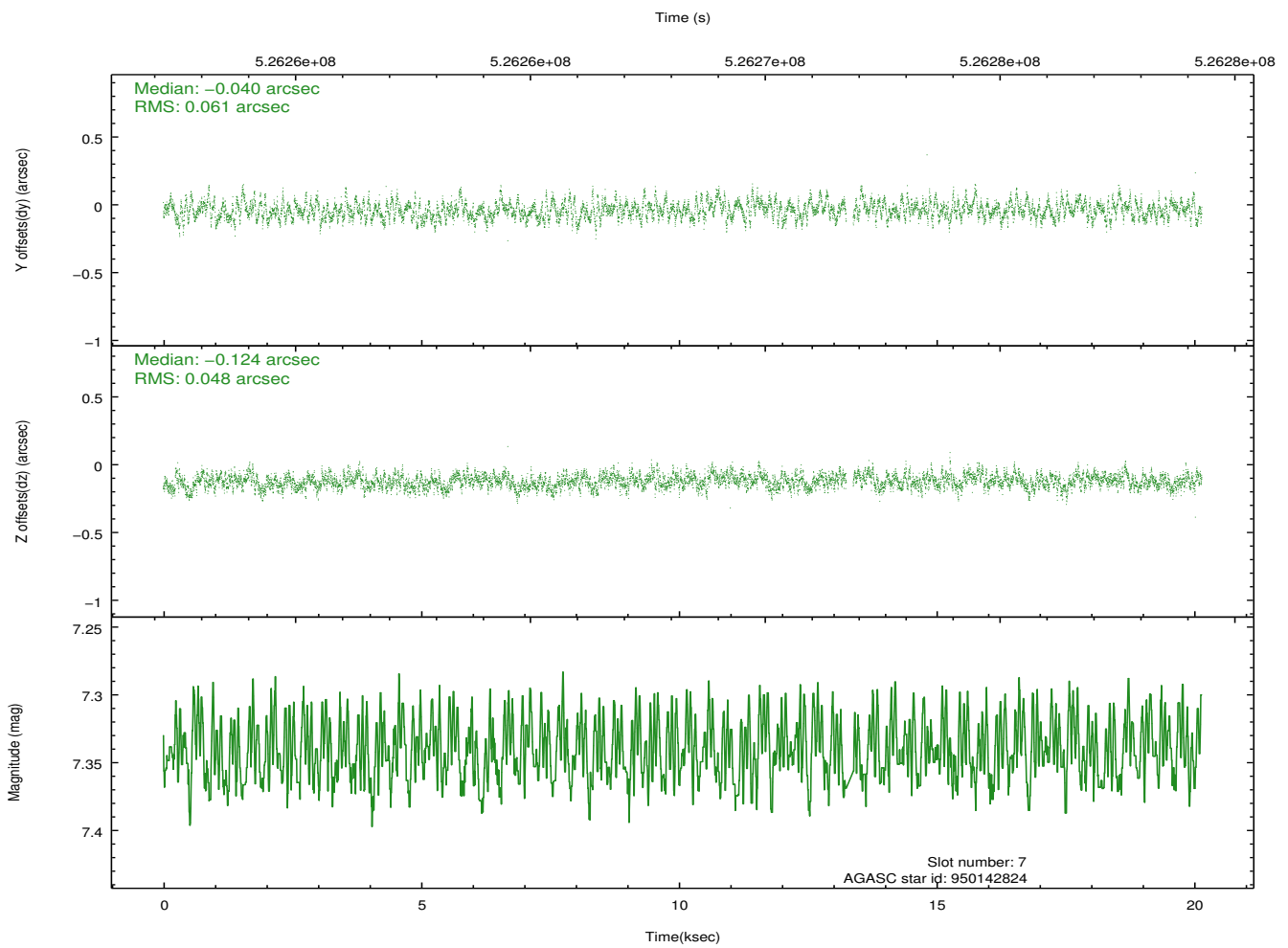
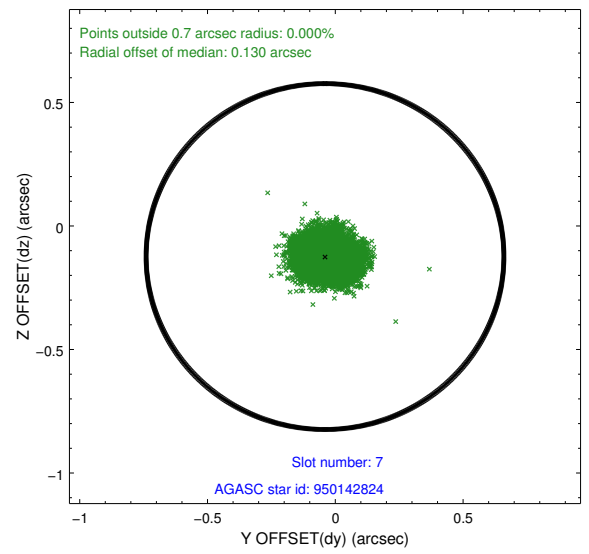
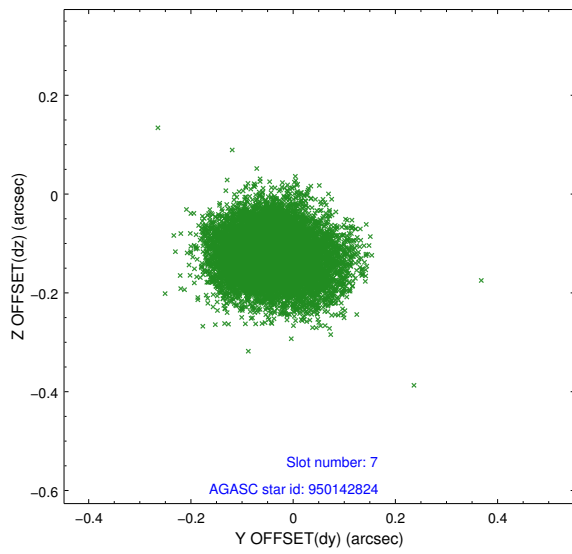
2.4.4 Slot 6



Time (s)

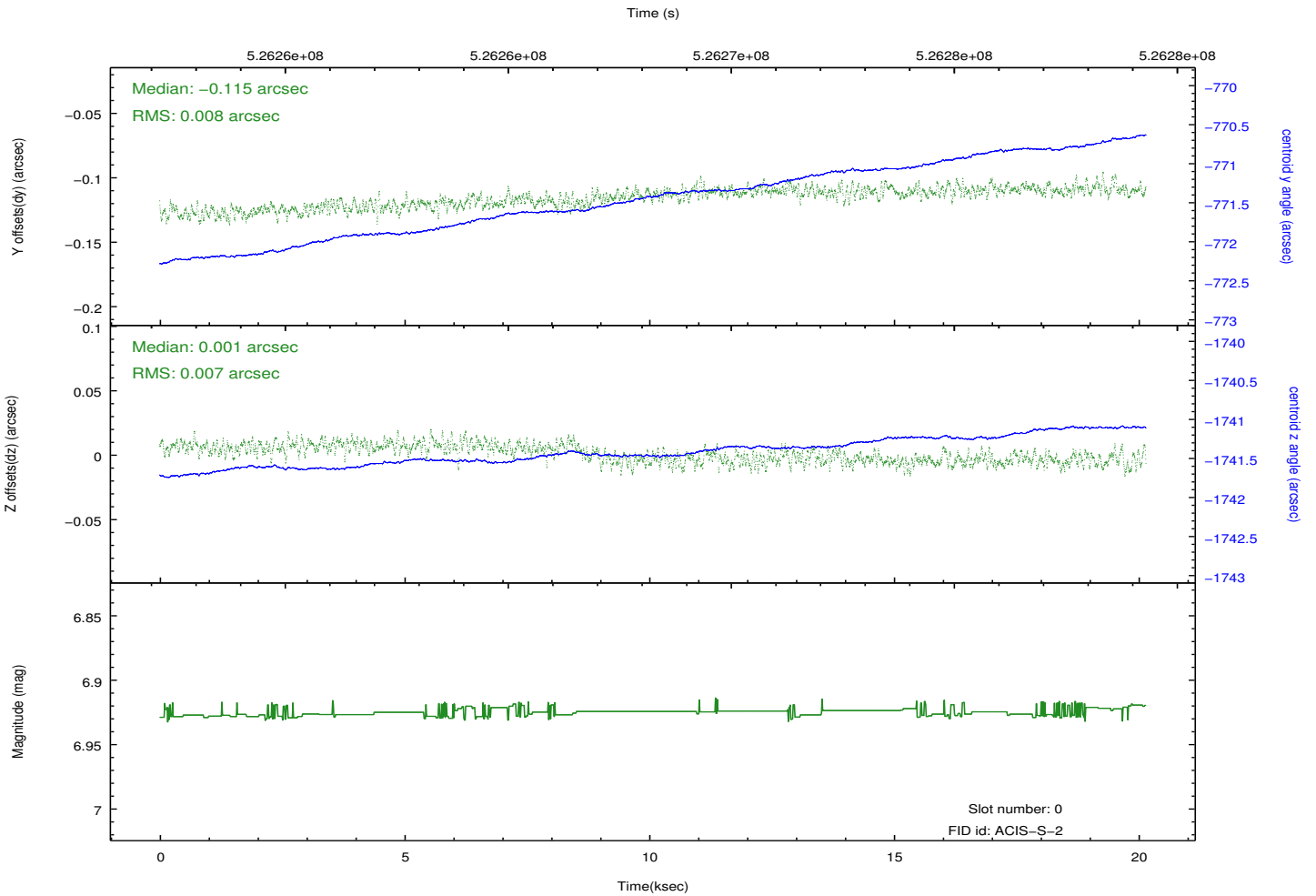
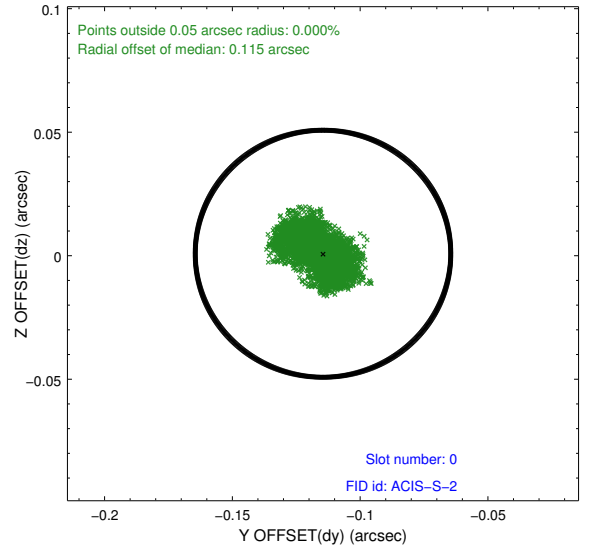
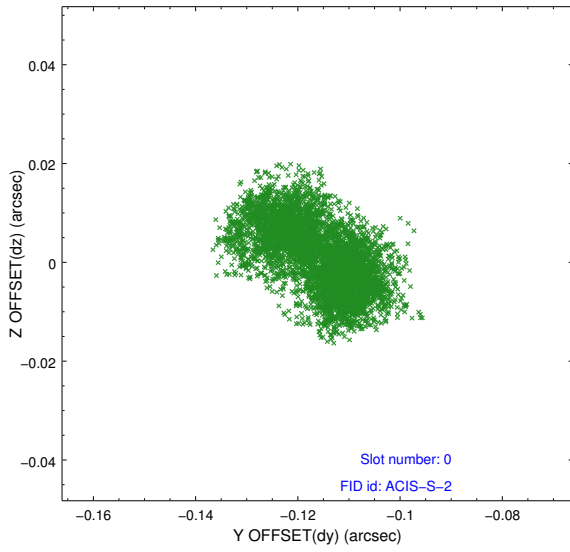


2.4.5 Slot 7

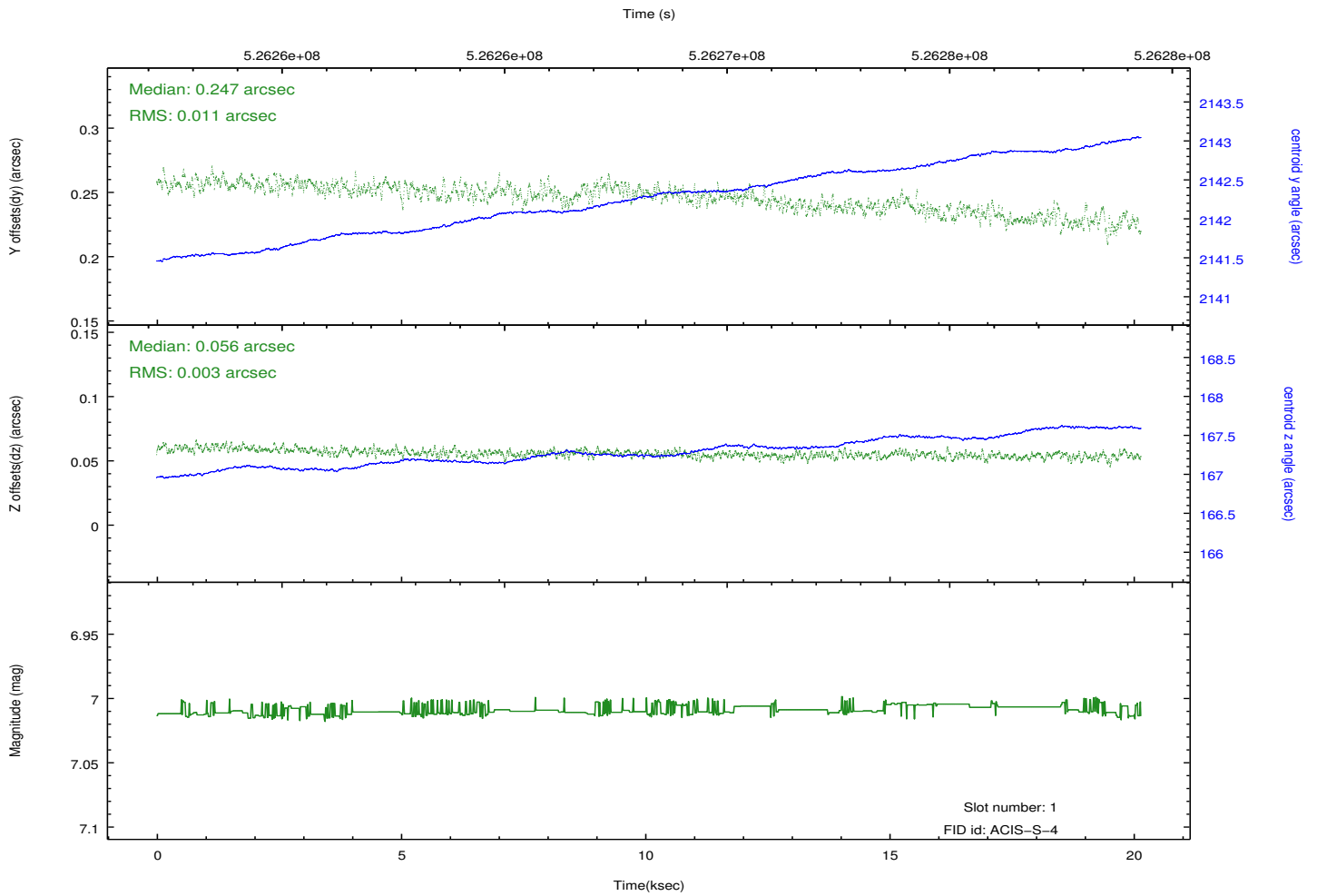
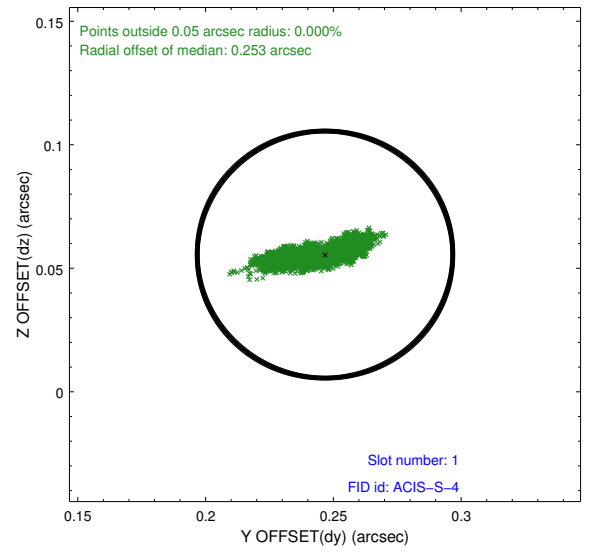
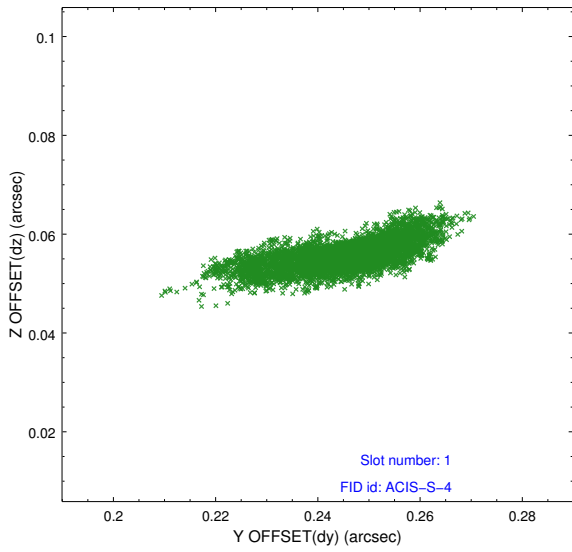


2.5 FID Slots

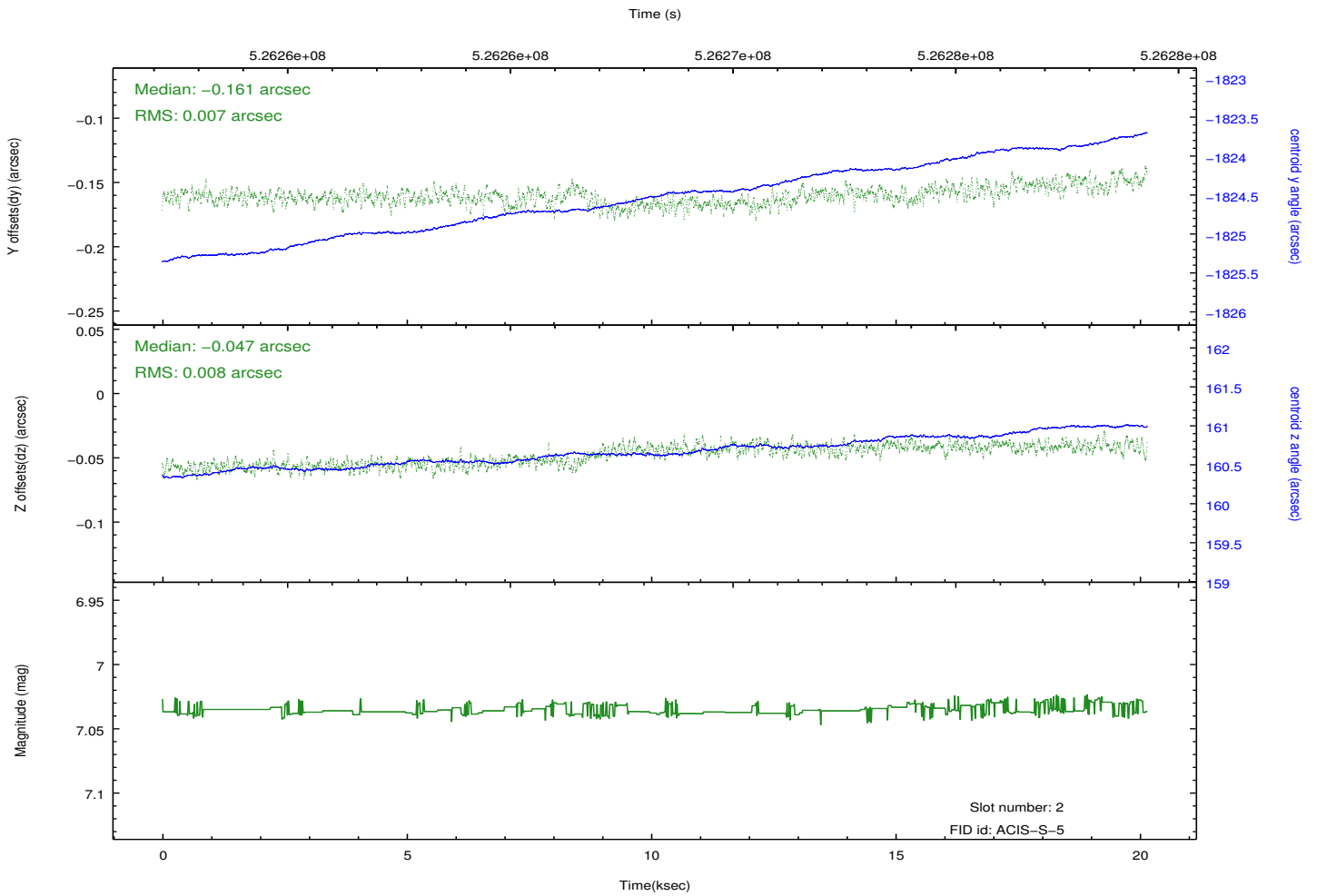
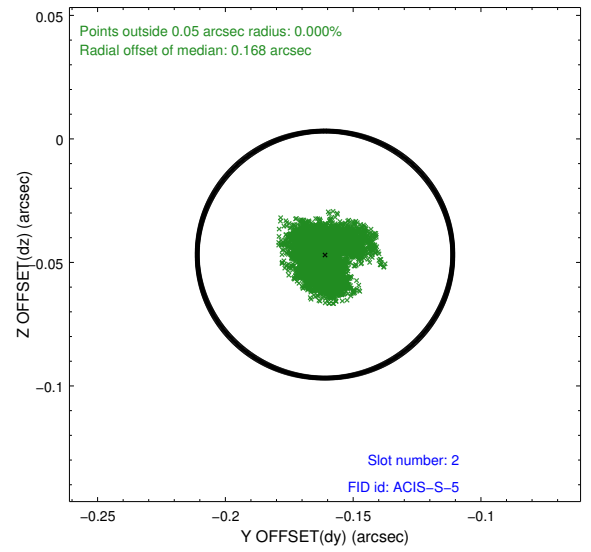
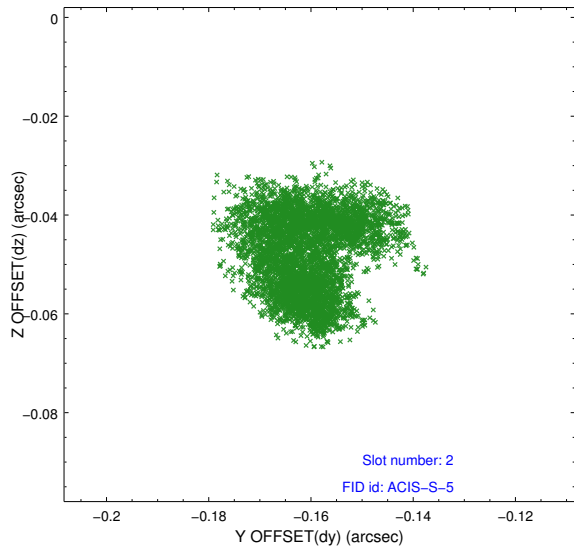
2.5.1 Slot 0



2.5.2 Slot 1



2.5.3 Slot 2



A Summary

A.1 Status

V&V Scientist	Jen Lauer
V&V Date (YYYY-MM-DD)	2014.09.05
V&V Edition	1
V&V Disposition and Status	OK
V&V Charge Time	20.069312713265

A.2 Comments

Joint Proposal: CX0-Spitzer. Monitor constraint met.