

V&V Reference Report

L2 ASCDS Version : 10.2.4

Observation 15875 - L2 Version 1
Chandra X-Ray Center

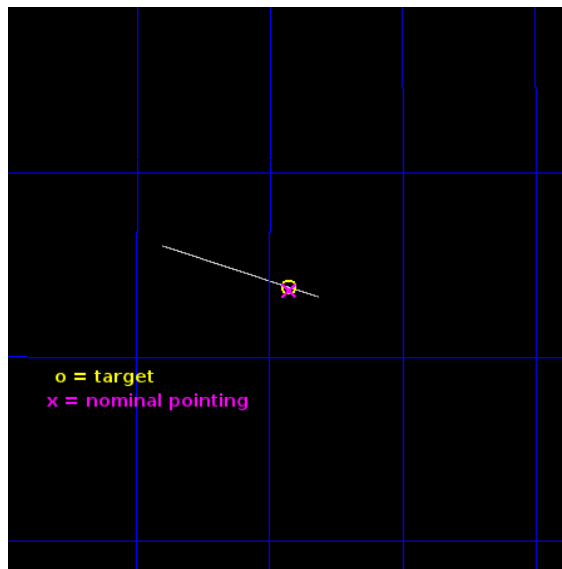
L2 Processing Date : Jul 29 2014

Contents

1	Front	2
2	OBI	3
2.1	OBI	3
2.1.1	Images	3
2.1.2	Bias	3
2.1.3	Parameters	4
2.1.4	Events	4
2.2	Compared Parameters	5
2.3	Aspect	6
2.4	Star Slots	9
2.4.1	Slot 3	9
2.4.2	Slot 4	10
2.4.3	Slot 5	11
2.4.4	Slot 6	12
2.4.5	Slot 7	13
2.5	FID Slots	14
2.5.1	Slot 0	14
2.5.2	Slot 1	15
2.5.3	Slot 2	16
A	Summary	17
A.1	Status	17
A.2	Comments	17

1 Front

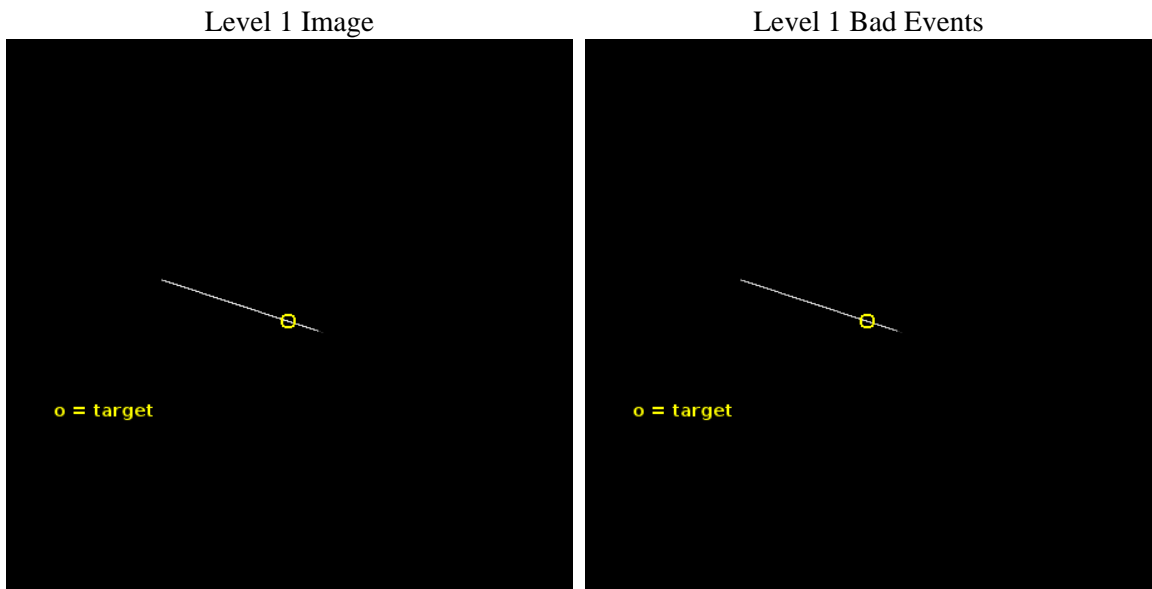
seq_num	502108	Sequence number
obs_id	15875	Observation id
title	PROMPT STUDY OF MAGNETAR OUTBURSTS WITH CHANDRA	Proposal title
observer	Dr. Nanda Rea	Principal investigator
object	SGR 1935+2154	Source name
ra_targ	293.732	Observer's specified target RA [deg]
dec_targ	21.896722	Observer's specified target Dec [deg]
ra_nom	293.7311474256	Nominal RA [deg]
dec_nom	21.893707553629	Nominal Dec [deg]
roll_nom	198.75654152704	Nominal Roll [deg]
revision	1	Processing version of data
ontime	75396.0	Sum of GTIs [s]
livetime	75101.484375	Livetime [s]
ontime7	75396.0	Sum of GTIs [s]
l2events	226000	Number of level 2 events



2 OBI

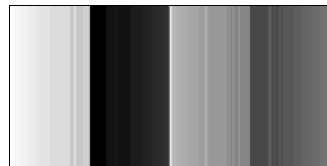
2.1 OBI

2.1.1 Images



2.1.2 Bias

Chip 7



2.1.3 Parameters

obi_num	1	Obi number	sched_exp_time	75267.469000	[s] Scheduled observation exposure time
ascdsver	10.2.4	Processing system revision	ontime	75396.0	Sum of GTIs [s]
caldbver	4.6.2	 	ontime7	75396.0	Sum of GTIs [s]
date	2014-07-29T16:12:41	Date and time of file creation	l1events	742114	Number of level 1 events
revision	1	Processing version of data			

2.1.4 Events

	ccd 7
level 1 events	742114
rejected events	505747
rejected %	68%

	ccd 7
grade 0 events	16587
	2%
grade 1 events	658
	0%
grade 2 events	63412
	8%
grade 3 events	12029
	1%
grade 4 events	11854
	1%
grade 5 events	50380
	6%
grade 6 events	132785
	17%
grade 7 events	454409
	61%

2.2 Compared Parameters

Parameter	Planned	Actual	Parameter	Planned	Actual
Instrument	ACIS	ACIS	Obspar format version number	7	7
Detector	ACIS-7	ACIS-7	Obspar file type	PREDICTED	ACTUAL
Grating	NONE	NONE	Obspar update status	NONE	UPDATED
Data mode	CC33_FAINT	CC33_FAINT	Number of optional ACIS chips dropped	0	0
Observation mode	POINTING	POINTING	On-chip summing requested	N	N
[deg] Pointing RA	293.750352	293.7311474256002	Subarray requested	NONE	NONE
[deg] Pointing Dec	21.914590	21.8937075536287	Alternating exposures requested	N	N
[deg] Pointing Roll	198.592754	198.7565415270385	[s] Primary exposure time	0.000000	0
[mm] SIM focus pos	-0.684267	-0.6828225247311905			
[mm] SIM defocus	0	0.001444936568705701			
[mm] SIM translation stage pos	-190.132523	-190.1400660498719			
[mm] SIM translation stage offset	0	0.00754346686406393			
[s] Observation start time (MET)	522896734.184000	522895570.88551			
Observation start date	2014-07-28T01:04:27	2014-07-28T00:46:10			
[s] Observation end time (MET)	522972001.184000	522972227.56474			
Observation end date	2014-07-28T21:58:54	2014-07-28T22:03:47			
Read mode	CONTINUOUS	CONTINUOUS			

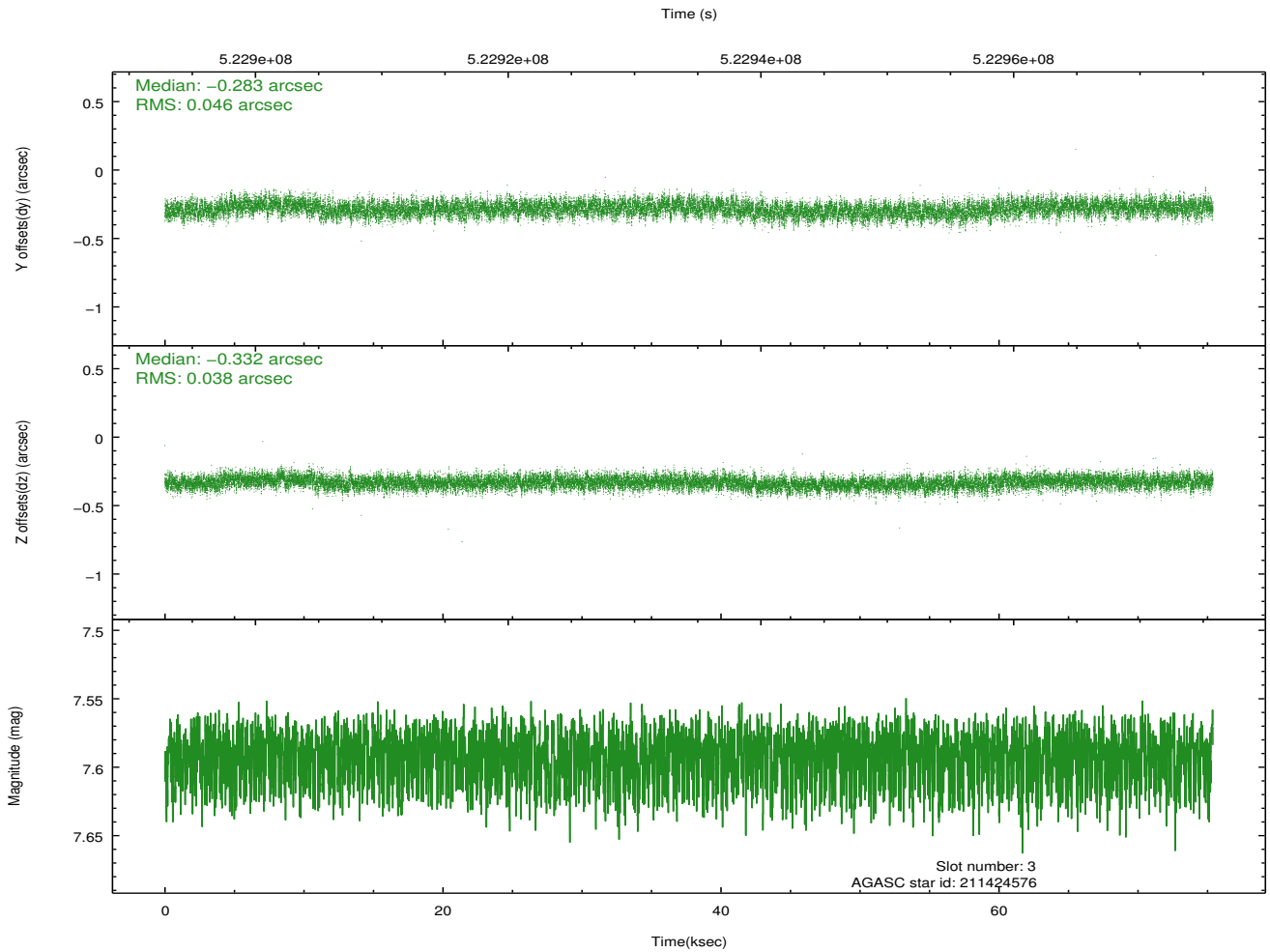
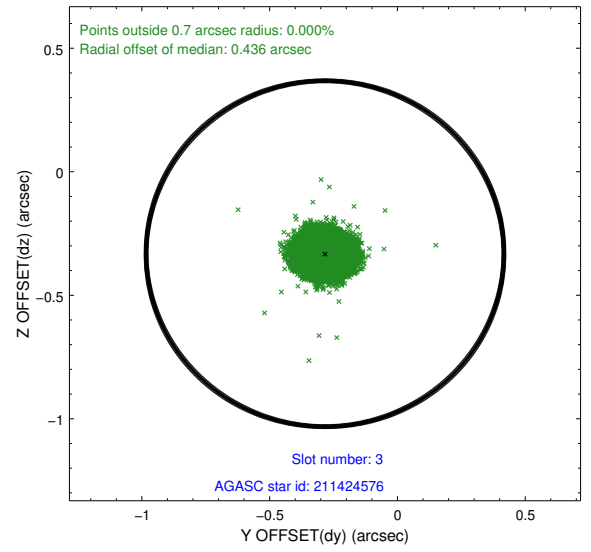
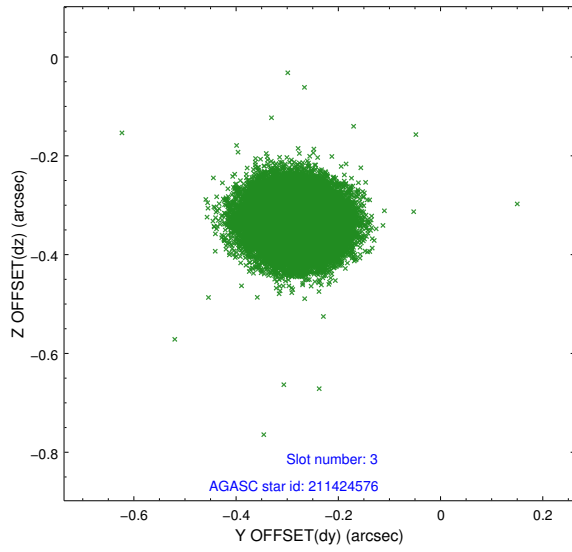
2.3 Aspect

Slot Statistics

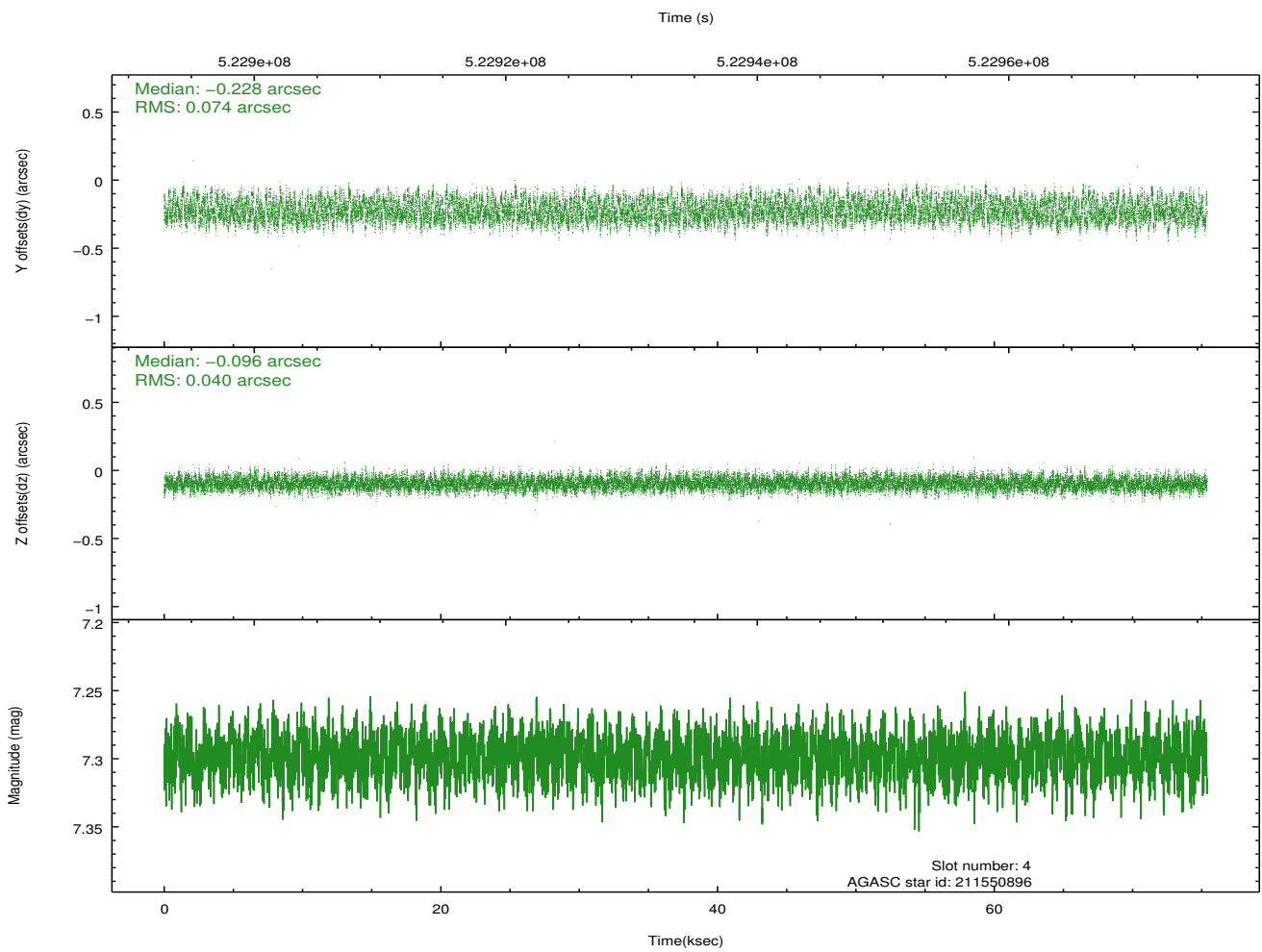
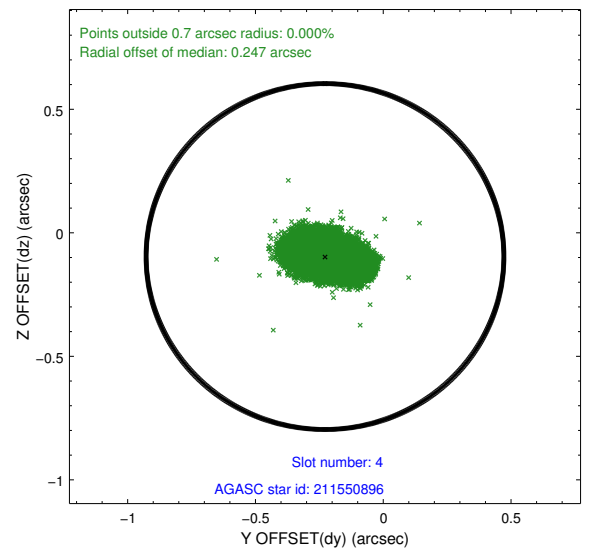
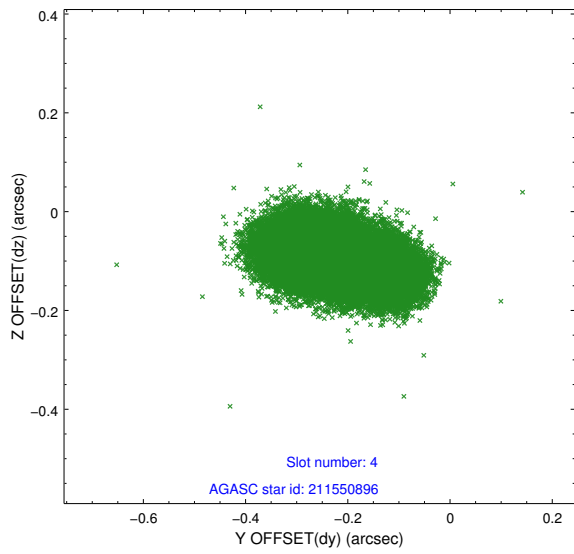
slot	status	id	mag	n_pts	med_dy	med_dz	dr1	dr2	ra	dec	mean_y	mean_z
0	FID	ACIS-S-2	6.94	18391	-0.173	-0.096	0.010	0.023	0.000000	0.000000	-776.09	-1740.27
1	FID	ACIS-S-4	7.03	18391	0.215	0.097	0.010	0.015	0.000000	0.000000	2137.66	168.38
2	FID	ACIS-S-6	7.16	18390	-0.071	0.004	0.011	0.018	0.000000	0.000000	385.99	805.66
3	GUIDE	211424576	7.59	36777	-0.283	-0.332	0.063	0.101	293.235837	21.456301	2159.05	1011.42
4	GUIDE	211550896	7.30	36778	-0.228	-0.096	0.090	0.146	294.277529	22.005948	-1773.44	246.60
5	GUIDE	280237272	8.26	36773	0.326	0.249	0.089	0.141	293.907450	22.501900	-1168.85	-1837.15
6	GUIDE	280249608	6.83	36780	0.208	0.257	0.099	0.148	294.034800	22.585765	-1666.35	-1989.10
7	GUIDE	211423912	8.71	36758	-0.026	-0.079	0.090	0.142	293.445577	21.516043	1424.81	1033.69

2.4 Star Slots

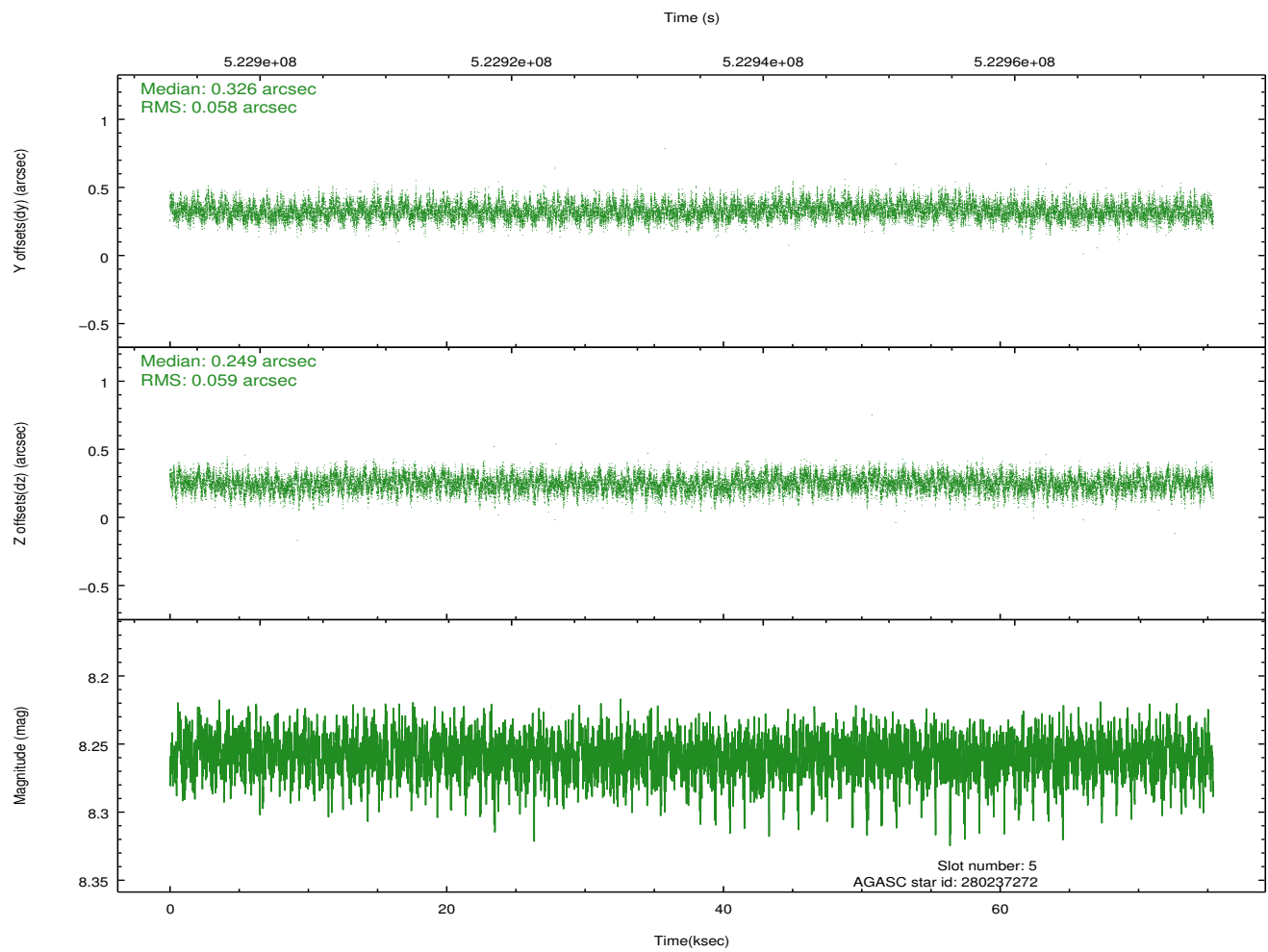
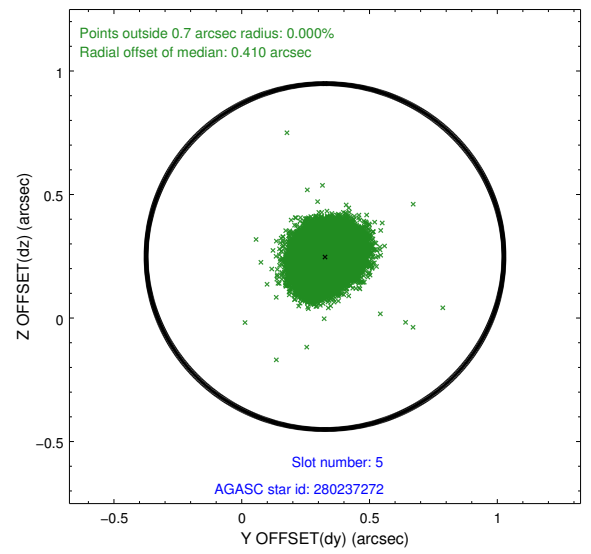
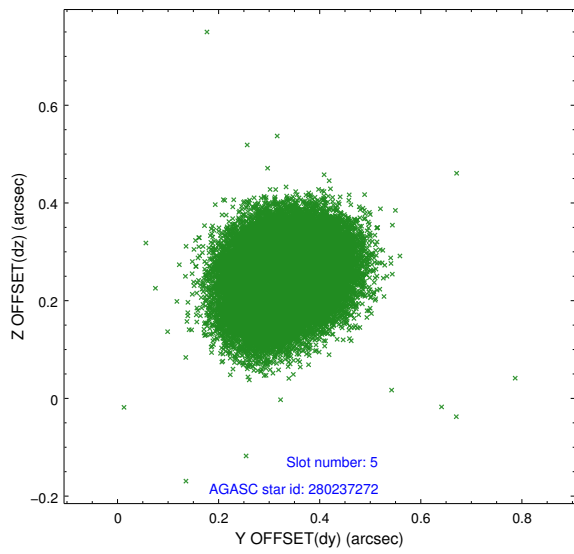
2.4.1 Slot 3



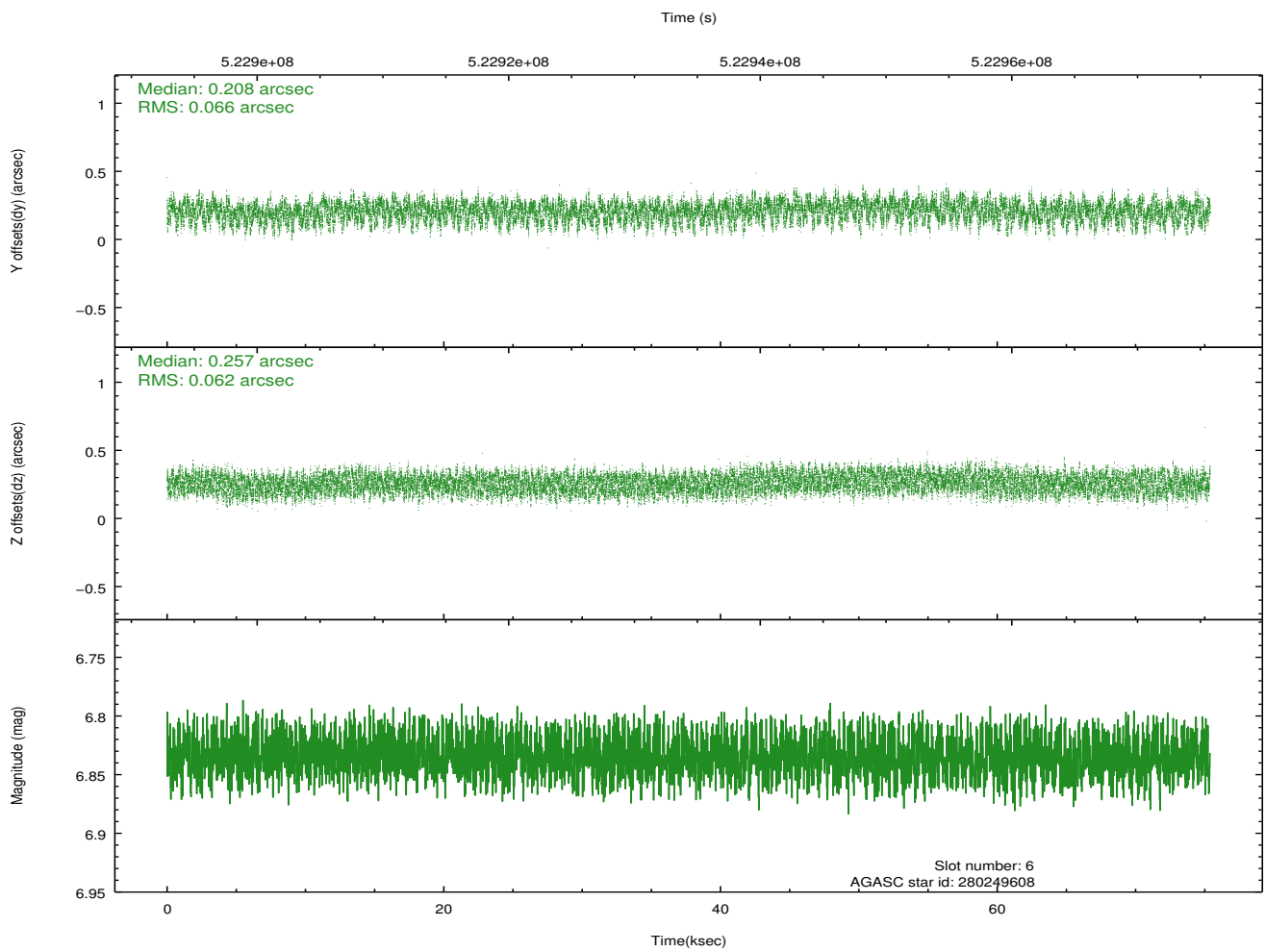
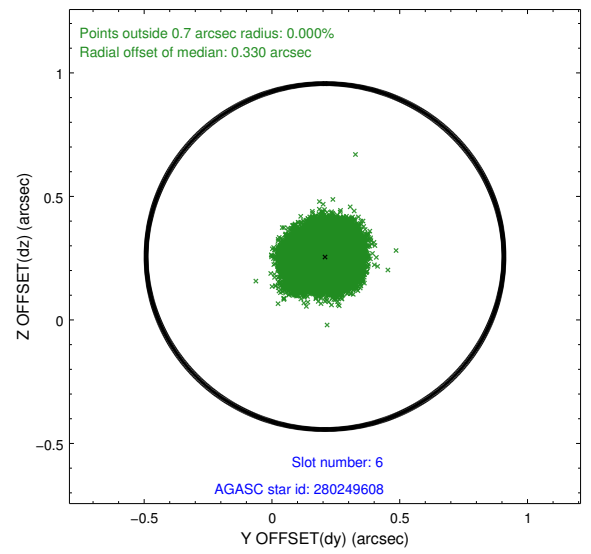
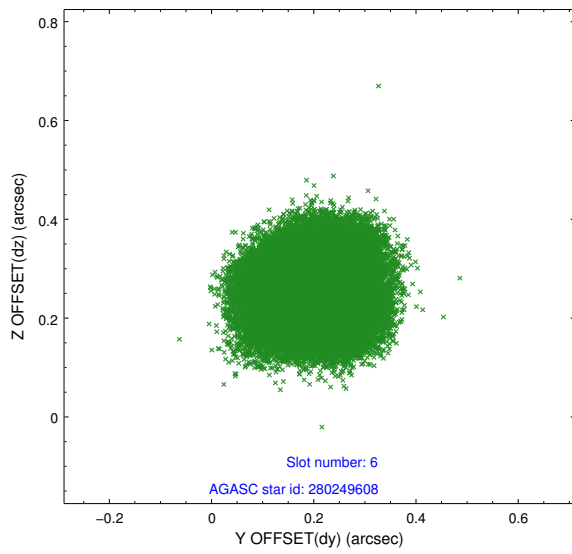
2.4.2 Slot 4



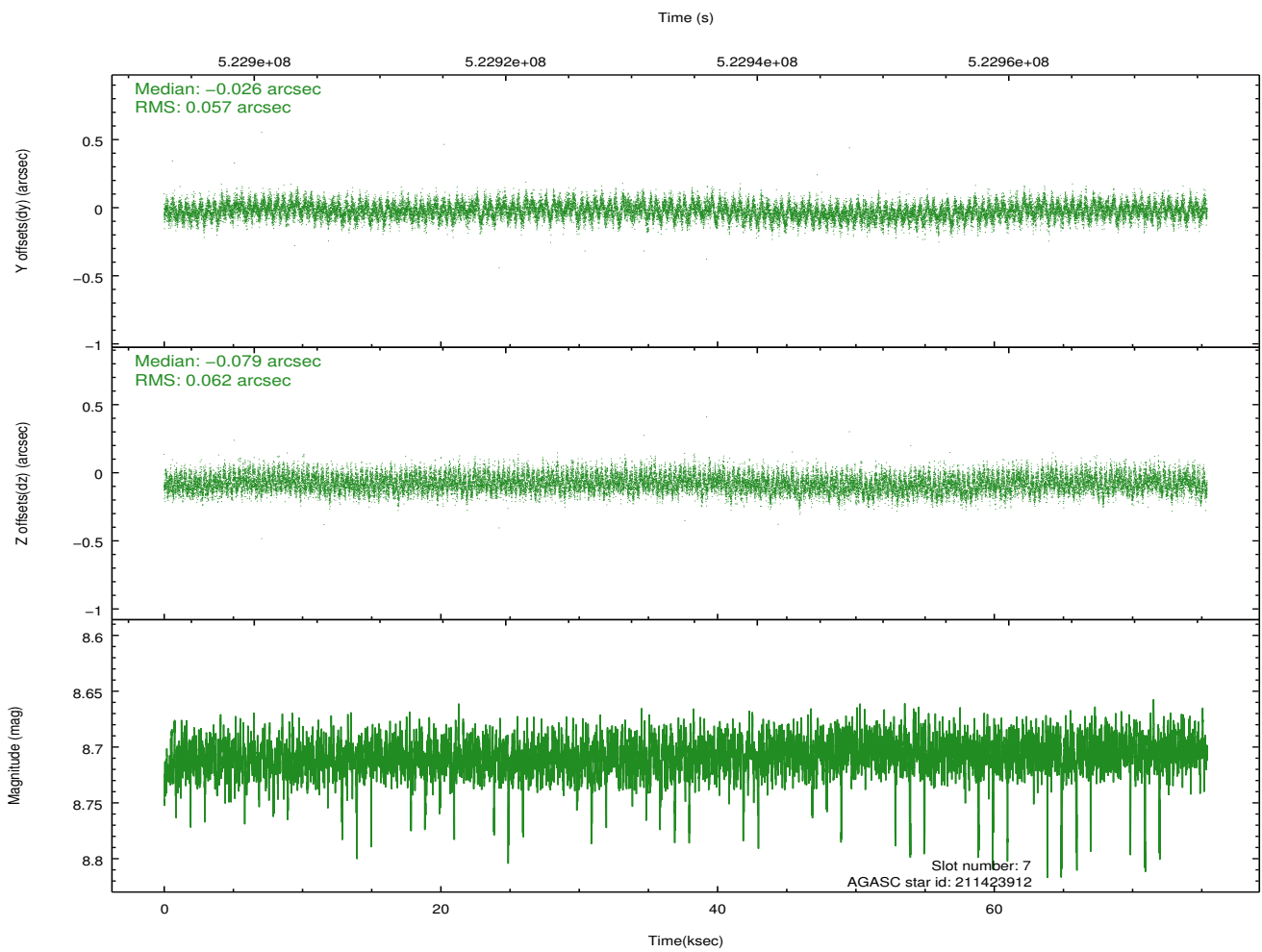
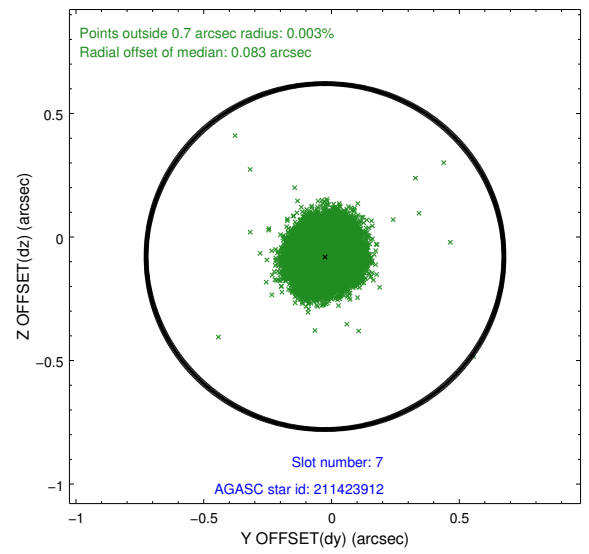
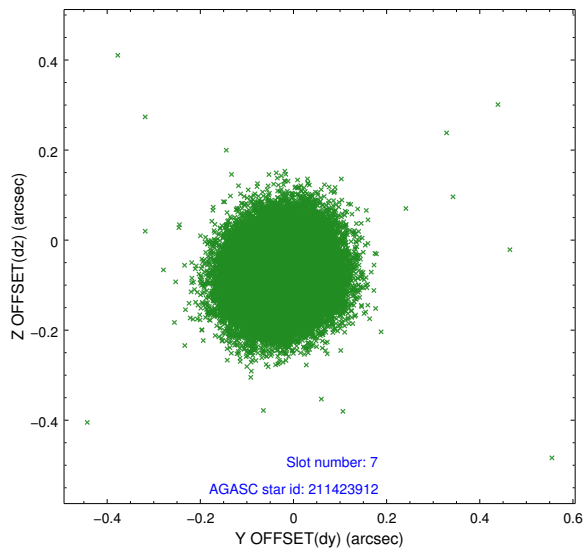
2.4.3 Slot 5



2.4.4 Slot 6

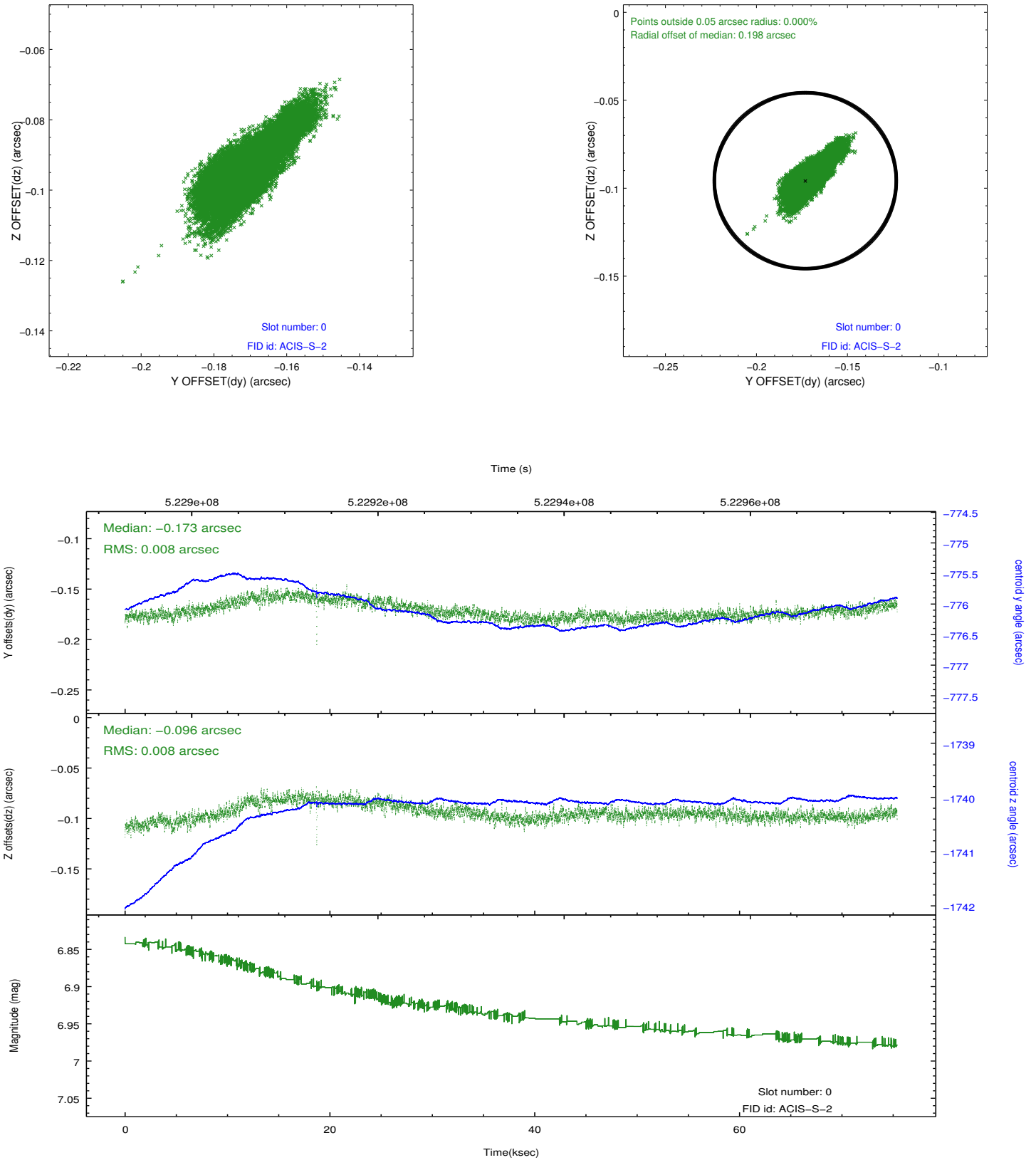


2.4.5 Slot 7

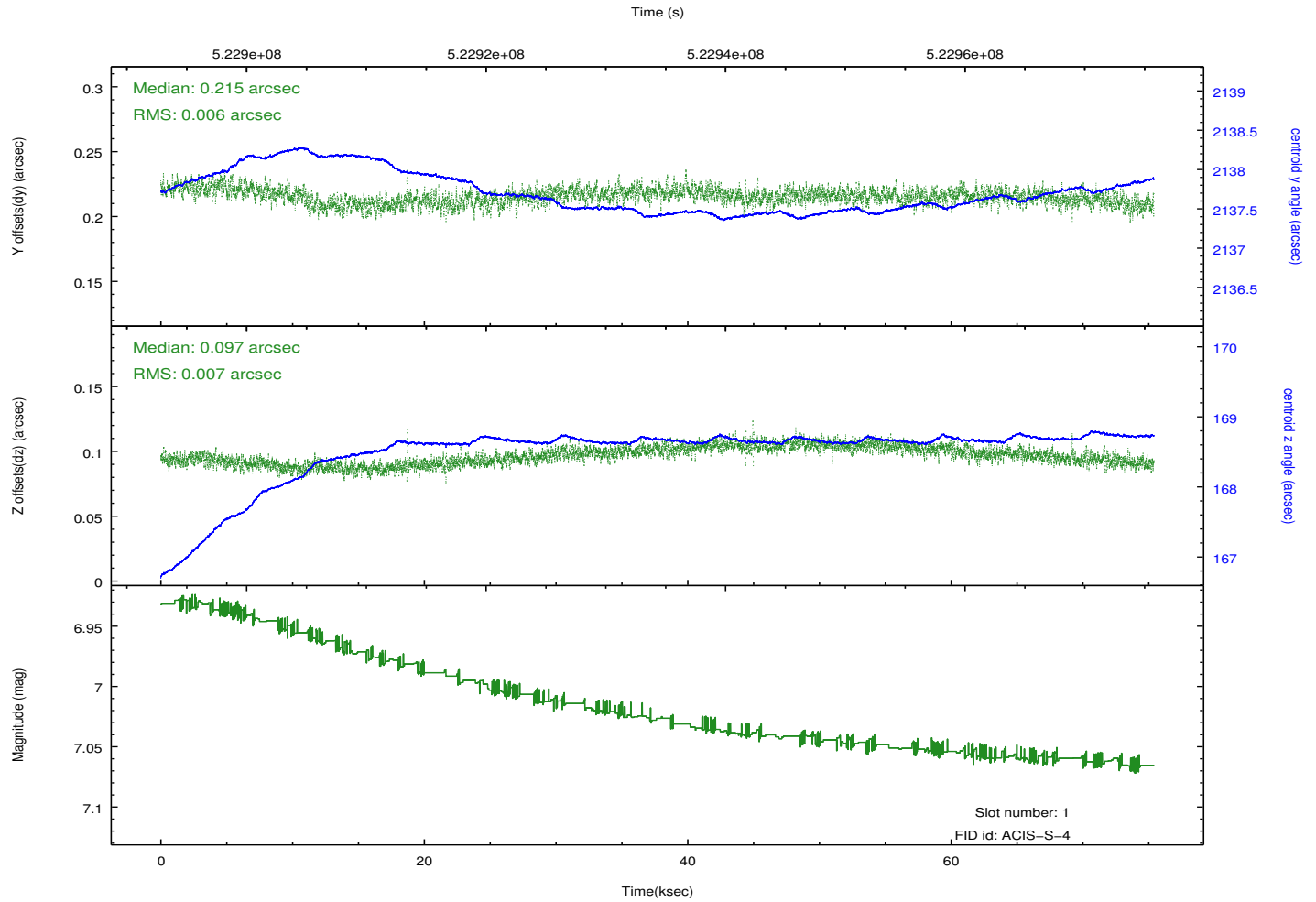
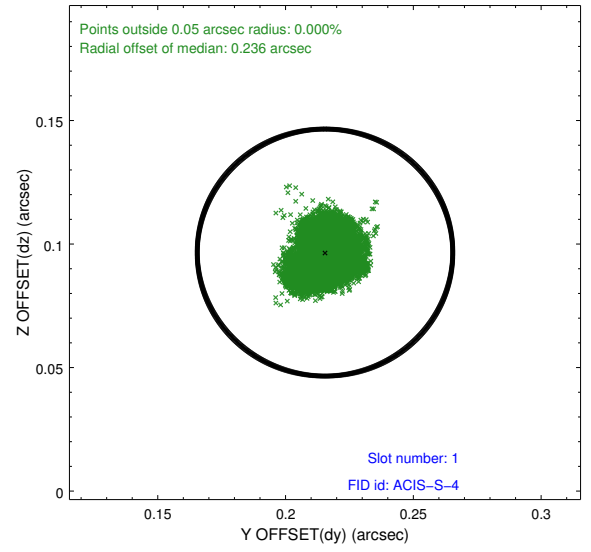
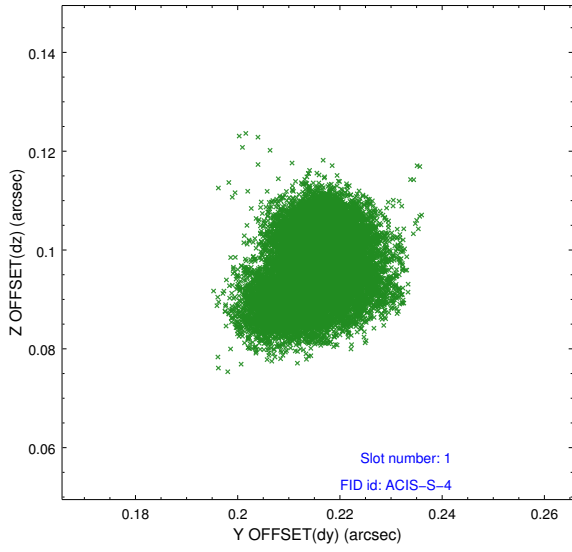


2.5 FID Slots

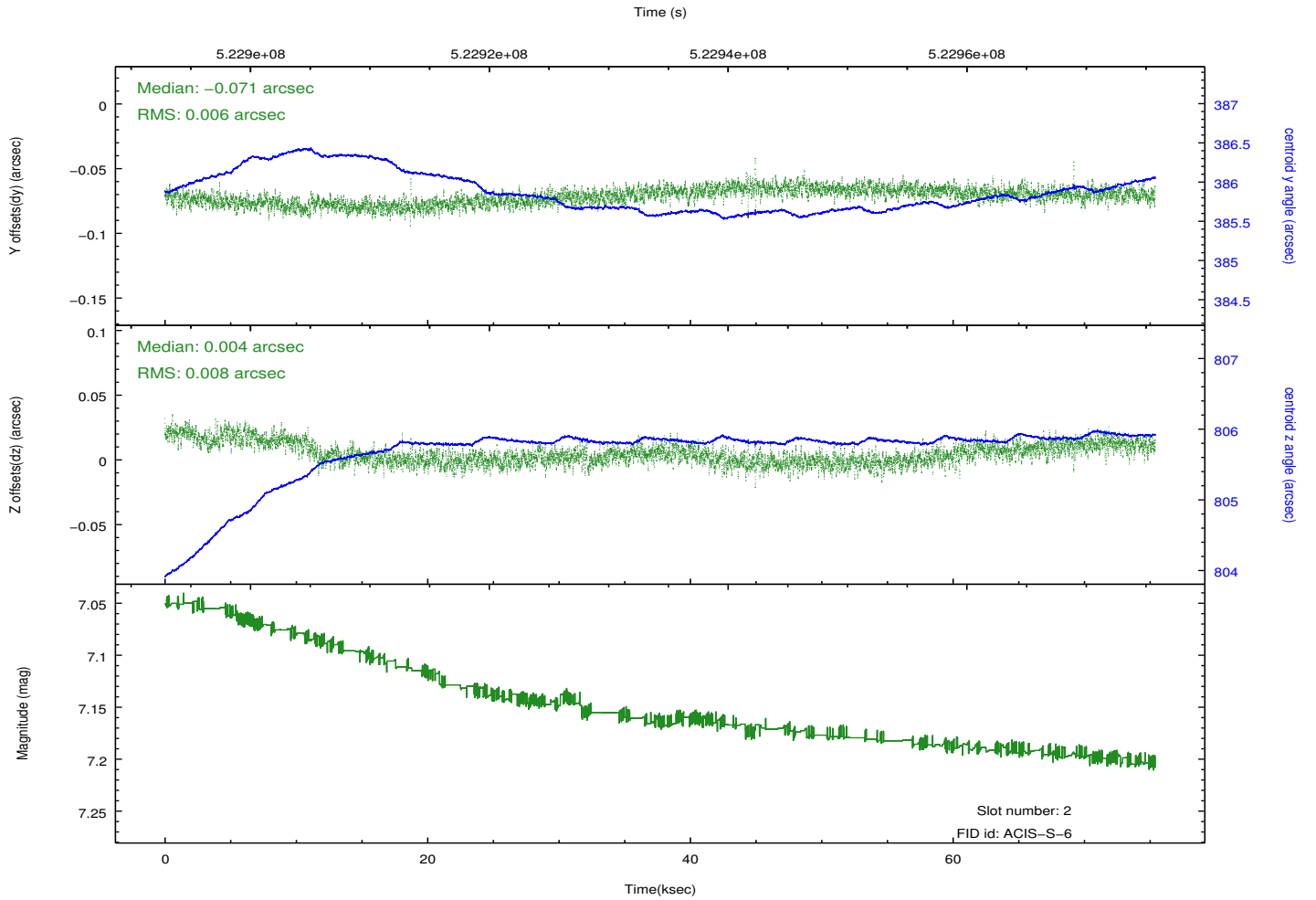
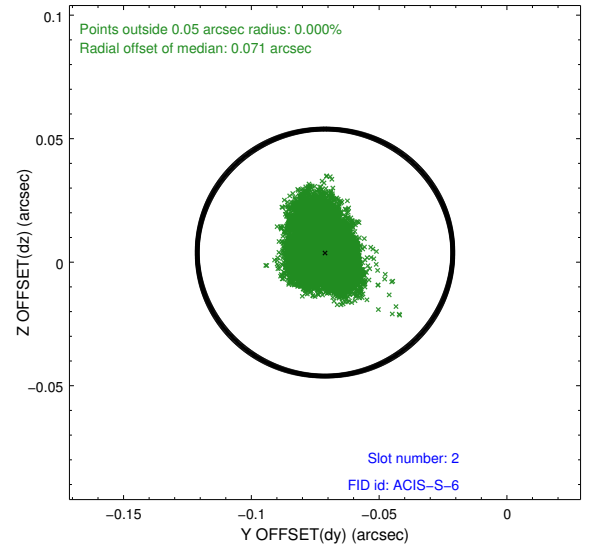
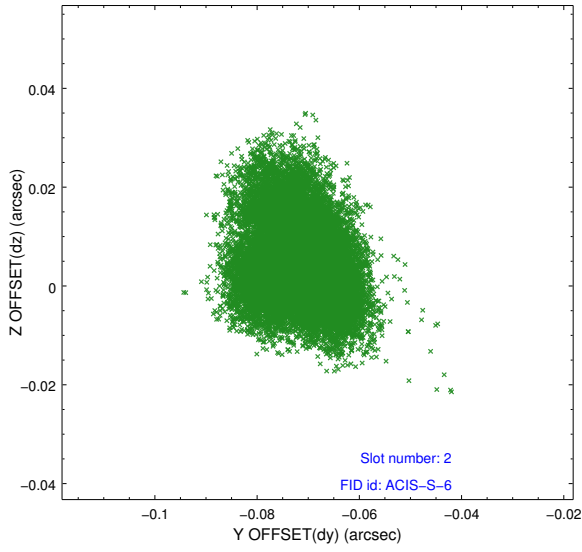
2.5.1 Slot 0



2.5.2 Slot 1



2.5.3 Slot 2



A Summary

A.1 Status

V&V Scientist	Joy Nichols
V&V Date (YYYY-MM-DD)	2014.07.29
V&V Edition	1
V&V Disposition and Status	OK
V&V Charge Time	75.396

A.2 Comments