

V&V Reference Report

L2 ASCDS Version : 8.4.5

Observation 1595 - L2 Version 3
Chandra X-Ray Center

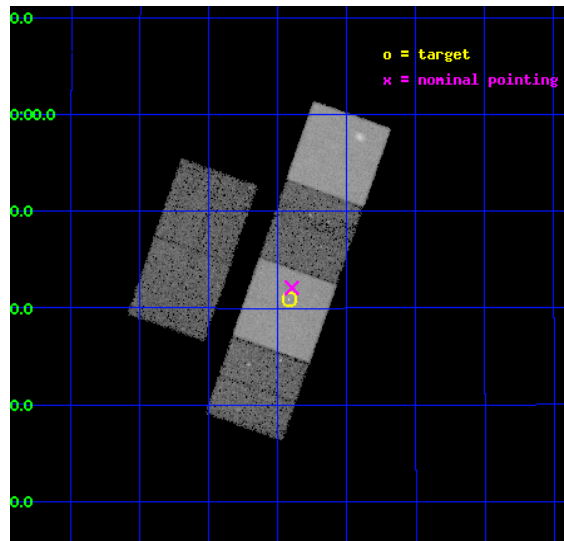
L2 Processing Date : Sep 17 2012

Contents

1	Front	2
2	OBI	3
2.1	OBI	3
2.1.1	Images	3
2.1.2	Bias	3
2.1.3	Parameters	4
2.1.4	Events	4
2.2	Compared Parameters	5
2.3	Aspect	6
2.4	Star Slots	9
2.4.1	Slot 3	9
2.4.2	Slot 4	10
2.4.3	Slot 5	11
2.4.4	Slot 6	12
2.4.5	Slot 7	13
2.5	FID Slots	14
2.5.1	Slot 0	14
2.5.2	Slot 1	15
2.5.3	Slot 2	16
A	Summary	17
A.1	Status	17
A.2	Comments	17

1 Front

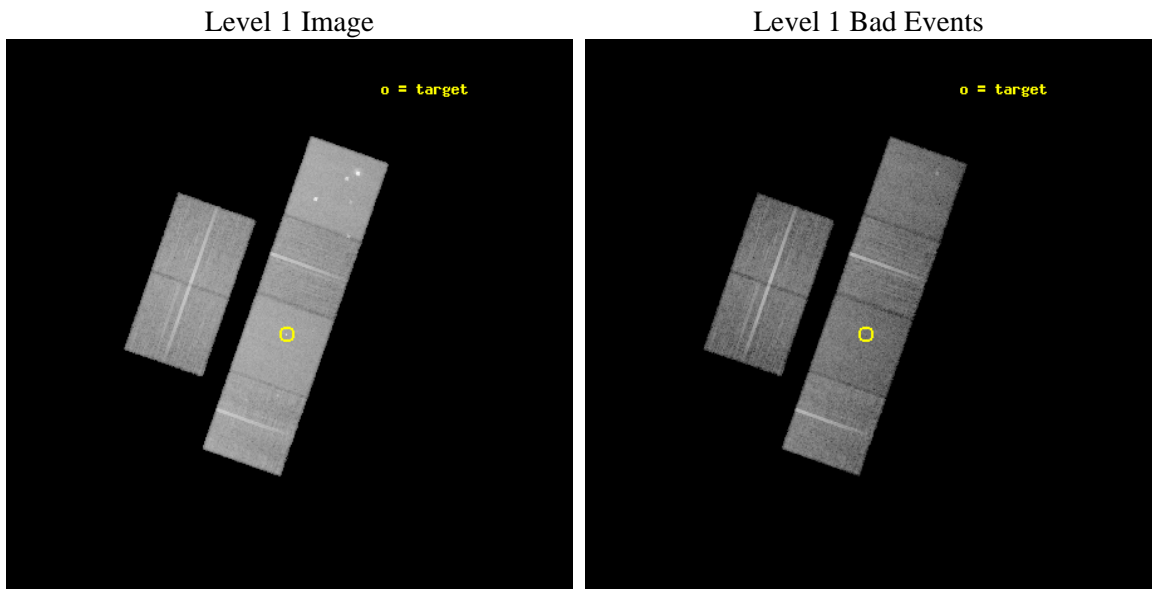
seq_num	700211	Sequence number
obs_id	1595	Observation id
title	THE NATURE OF THE X-RAY EMISSION FROM THE RADIO QUASAR 3C9	Proposa
observer	Professor Andrew Fabian	Principal investigator
object	3C9	Source name
dtcycle	0	
cycle	P	events from which exps? Prim/Second/Both
ra_targ	5.105	Observer's specified target RA [deg]
dec_targ	15.681389	Observer's specified target Dec [deg]
ra_nom	5.0996227868649	Nominal RA [deg]
dec_nom	15.701601238445	Nominal Dec [deg]
roll_nom	109.29918533864	Nominal Roll [deg]
revision	3	Processing version of data
ontime	20137.60001874	Sum of GTIs [s]
livetime	19882.605601895	Livetime [s]
ontime2	20134.359088421	Sum of GTIs [s]
ontime3	20137.60001874	Sum of GTIs [s]
ontime5	20137.60001874	Sum of GTIs [s]
ontime6	20137.60001874	Sum of GTIs [s]
ontime7	20137.60001874	Sum of GTIs [s]
ontime8	20137.60001874	Sum of GTIs [s]
l2events	222973	Number of level 2 events



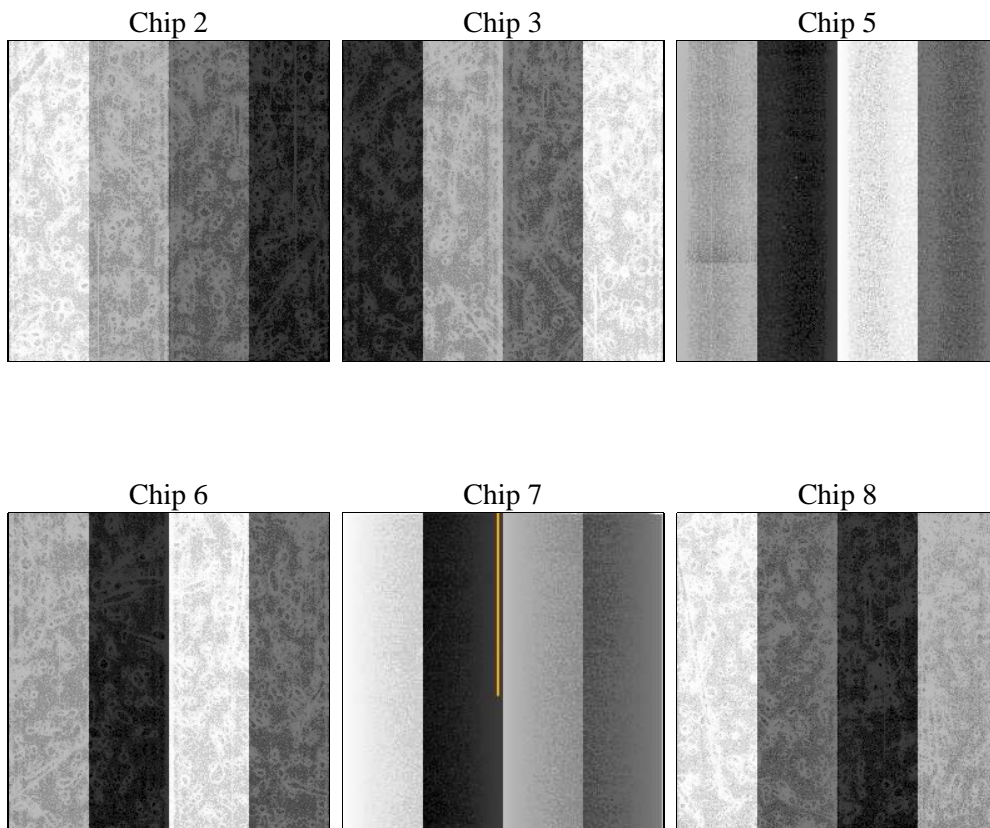
2 OBI

2.1 OBI

2.1.1 Images



2.1.2 Bias



2.1.3 Parameters

obi_num	0	Obi number	sched_exp_time	20000.000000	[s] Scheduled observation exposure time
ascdsver	8.4.5	Processing system revision	ontime	20137.60001874	Sum of GTIs [s]
caldbver	4.5.1.1	 	ontime2	20134.359088421	Sum of GTIs [s]
date	2012-09-17T18:53:48	Date and time of file creation	ontime3	20137.60001874	Sum of GTIs [s]
revision	3	Processing version of data	ontime5	20137.60001874	Sum of GTIs [s]
			ontime6	20137.60001874	Sum of GTIs [s]
			ontime7	20137.60001874	Sum of GTIs [s]
			ontime8	20137.60001874	Sum of GTIs [s]
			l1events	942743	Number of level 1 events

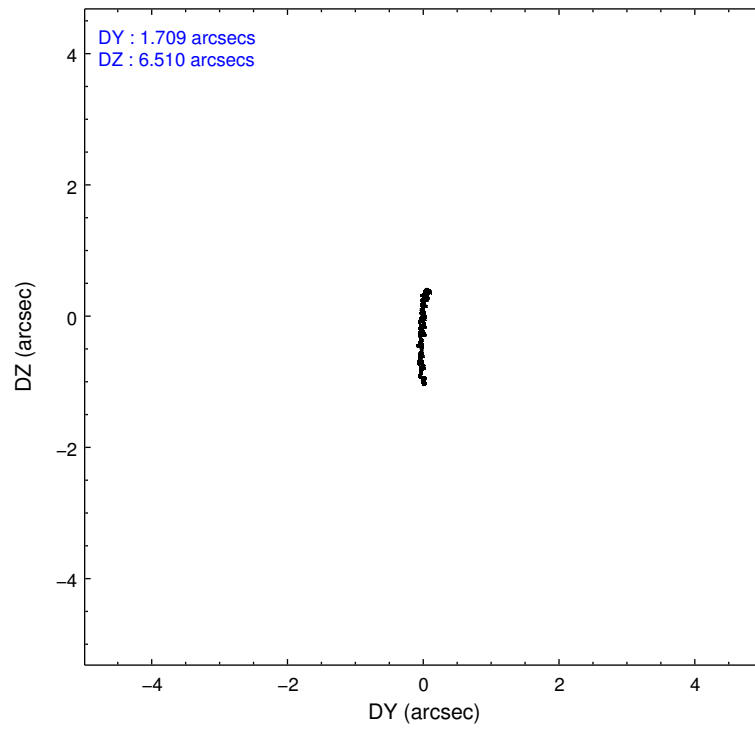
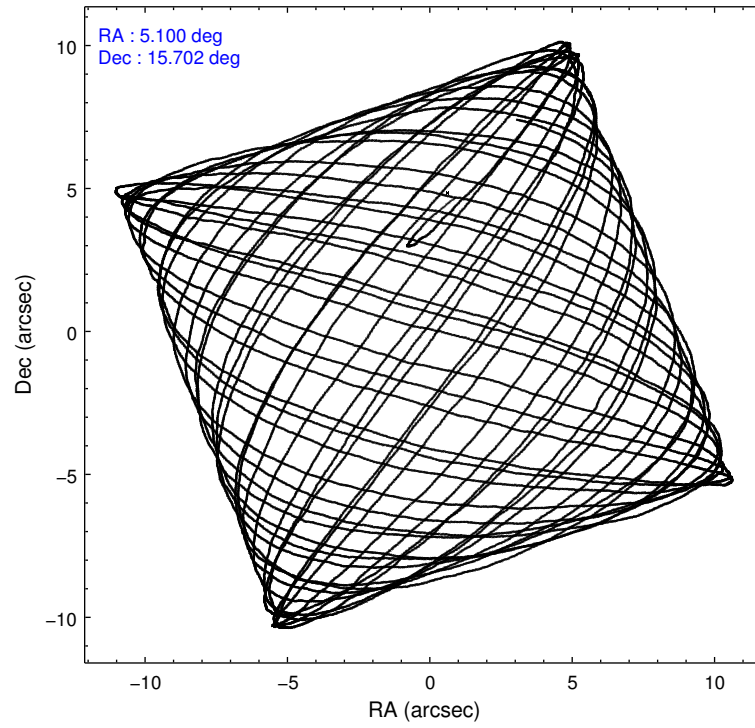
2.1.4 Events

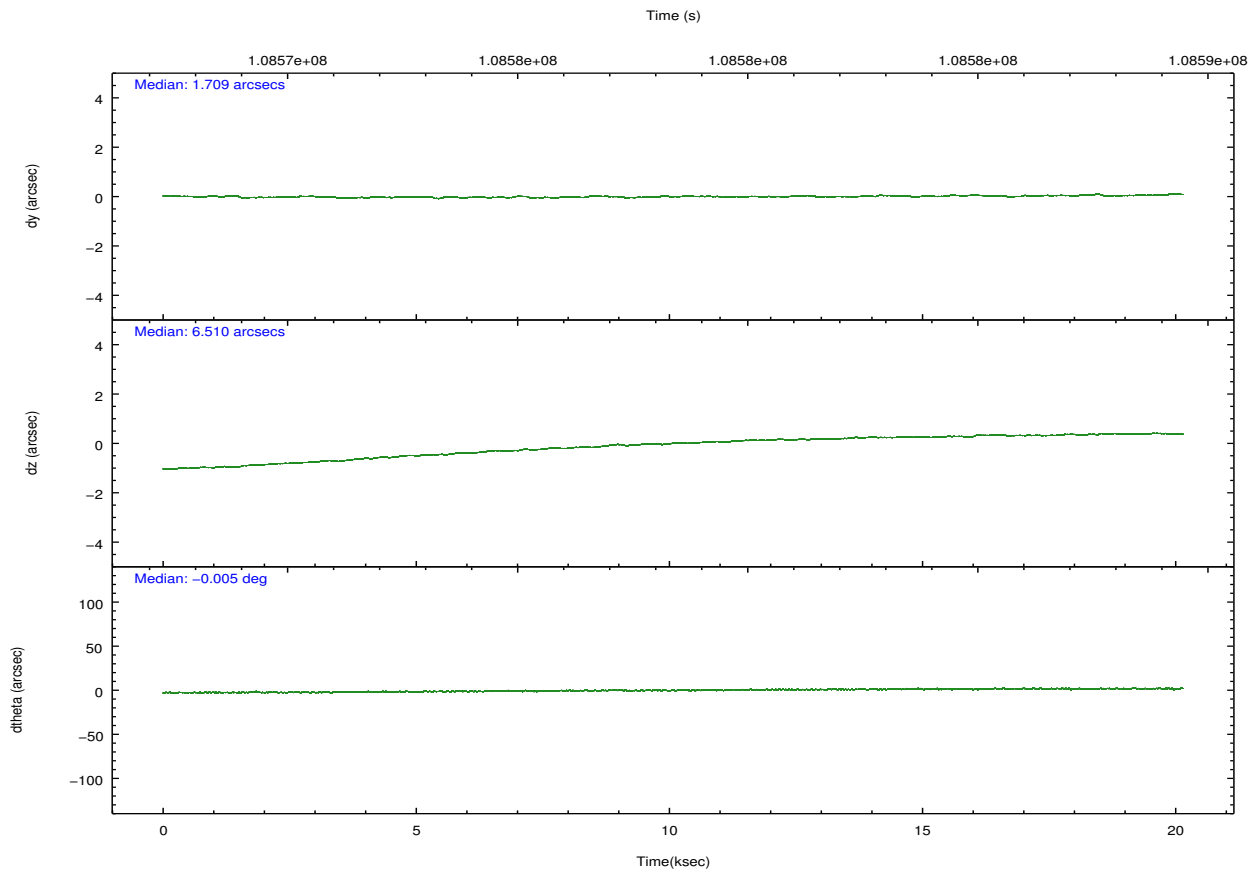
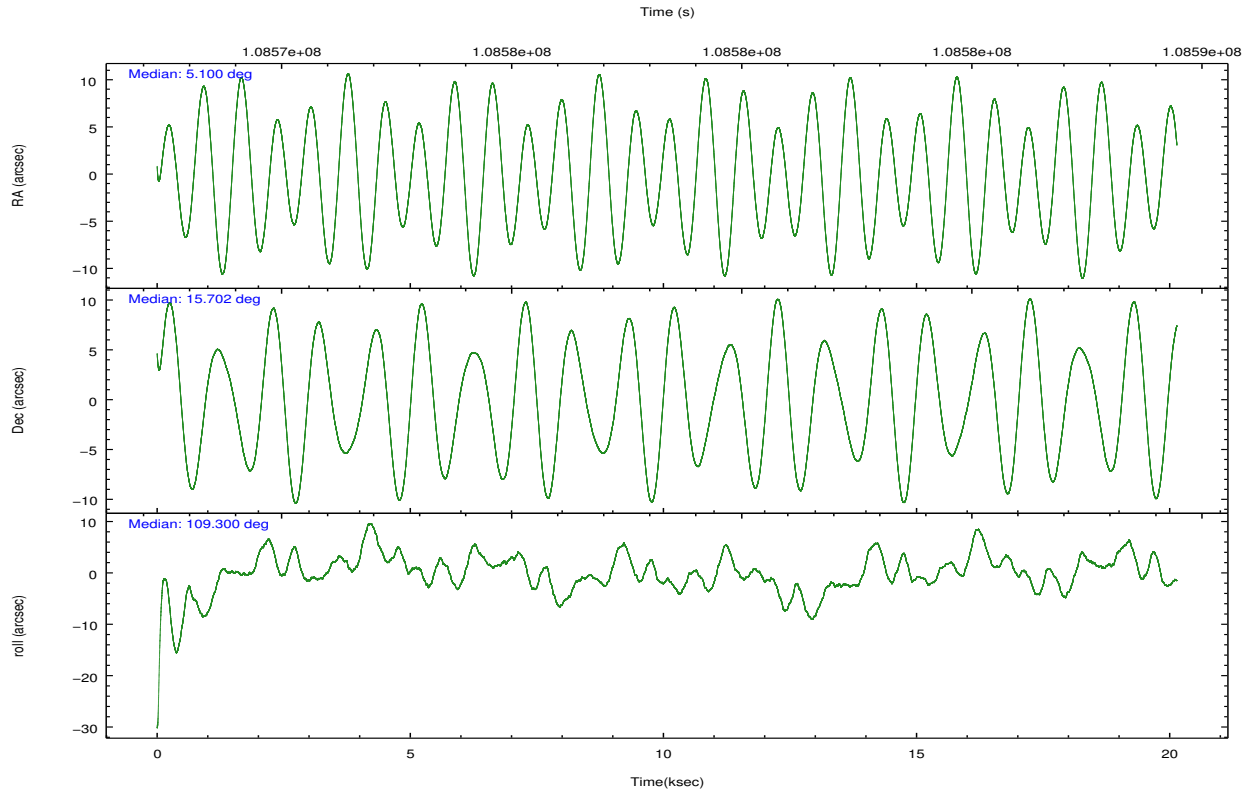
	ccd 2	ccd 3	ccd 5	ccd 6	ccd 7	ccd 8		ccd 2	ccd 3	ccd 5	ccd 6	ccd 7	ccd 8
level 1 events	134124	127045	202694	132694	180270	165916	grade 0 events	6583	6436	17088	7281	8049	11489
rejected events	119052	112463	101707	116691	99723	131595		4%	5%	8%	5%	4%	6%
rejected %	88%	88%	50%	87%	55%	79%	grade 1 events	58	62	501	66	162	79
								0%	0%	0%	0%	0%	0%
							grade 2 events	3325	2881	28644	3116	15640	7587
								2%	2%	14%	2%	8%	4%
							grade 3 events	1379	1481	4570	1483	7278	3429
								1%	1%	2%	1%	4%	2%
							grade 4 events	1385	1360	4405	1517	7047	3110
								1%	1%	2%	1%	3%	1%
							grade 5 events	4542	5046	14230	5548	16220	6930
								3%	3%	7%	4%	8%	4%
							grade 6 events	2655	2670	47764	2857	43736	9152
								1%	2%	23%	2%	24%	5%
							grade 7 events	114197	107109	85492	110826	82138	124140
								85%	84%	42%	83%	45%	74%

2.2 Compared Parameters

Parameter	Planned	Actual	Parameter	Planned	Actual
Instrument	ACIS	ACIS	Obspar format version number	7	7
Detector	ACIS-235678	ACIS-235678	Obspar file type	PREDICTED	ACTUAL
Grating	NONE	NONE	Obspar update status	NONE	UPDATED
Data mode	FAINT	FAINT	Number of optional ACIS chips dropped	0	0
Observation mode	POINTING	POINTING	On-chip summing requested	N	N
[deg] Pointing RA	5.121285	5.09962278686487	Subarray requested	NONE	NONE
[deg] Pointing Dec	15.684011	15.7016012384454	Alternating exposures requested	N	N
[deg] Pointing Roll	109.136718	109.2991853386373	[s] Primary exposure time	0.000000	3.2
[mm] SIM focus pos	-0.684267	-0.6828225247311905			
[mm] SIM defocus	0	0.001444936568705701			
[mm] SIM translation stage pos	-190.132523	-190.1400660498719			
[mm] SIM translation stage offset	0	0.00754346686406393			
[s] Observation start time (MET)	108568446.184000	108567262.2253			
Observation start date	2001-06-10T13:53:02	2001-06-10T13:34:22			
[s] Observation end time (MET)	108588446.184000	108588969.16365			
Observation end date	2001-06-10T19:26:22	2001-06-10T19:36:09			
Read mode	TIMED	TIMED			

2.3 Aspect



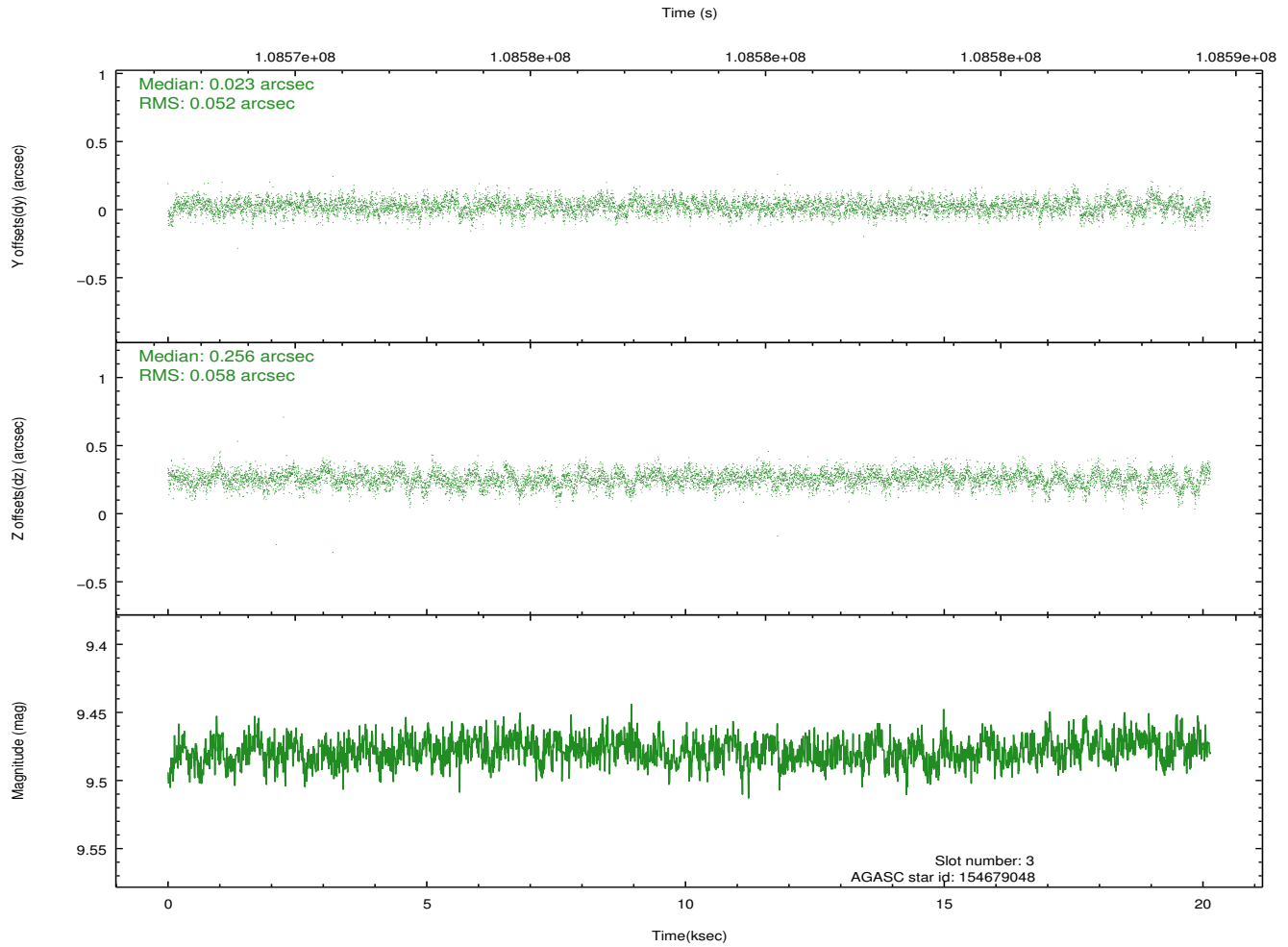
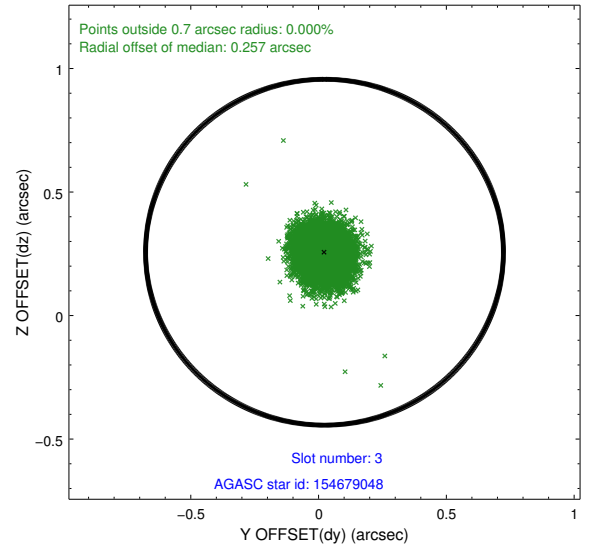
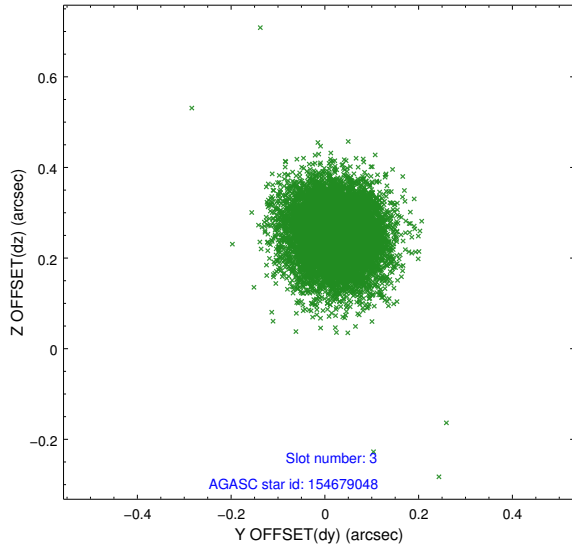


Slot Statistics

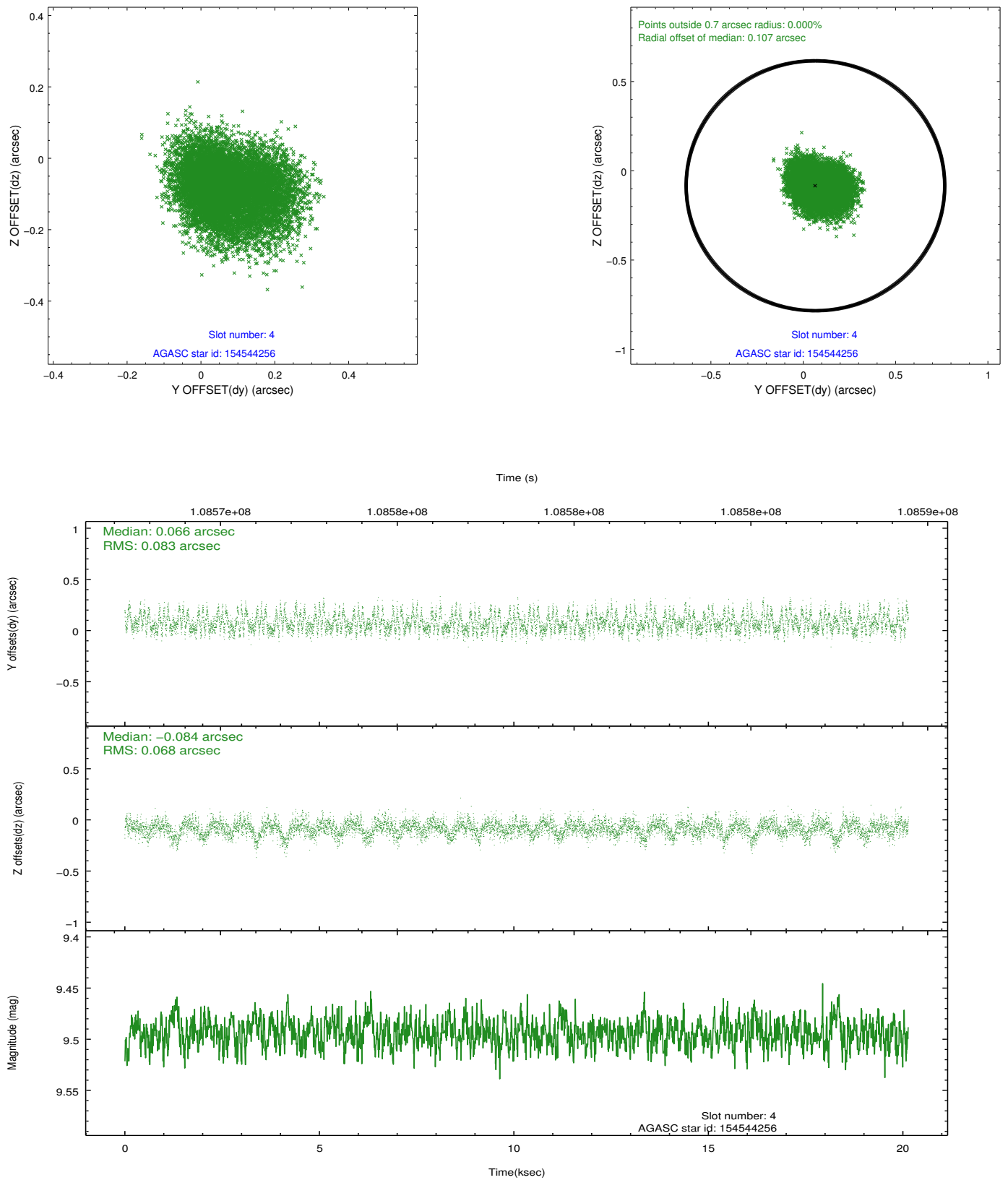
slot	status	id	mag	n_pts	med_dy	med_dz	dr1	dr2	ra	dec	mean_y	mean_z
0	FID	ACIS-S-2	7.11	4912	-0.033	0.007	0.011	0.016	0.000000	0.000000	-754.33	-1727.53
1	FID	ACIS-S-4	7.20	4912	-0.045	0.014	0.010	0.016	0.000000	0.000000	2158.83	180.81
2	FID	ACIS-S-5	7.23	4912	0.047	-0.012	0.009	0.014	0.000000	0.000000	-1806.87	174.61
3	GUIDE	154679048	9.48	9821	0.023	0.256	0.082	0.134	5.608057	15.405015	-1500.05	-1265.94
4	GUIDE	154544256	9.49	9822	0.066	-0.084	0.114	0.184	4.761635	15.035728	-1793.22	1947.10
5	GUIDE	154546464	9.87	9825	-0.216	-0.133	0.142	0.229	4.529635	15.666511	615.96	1958.52
6	GUIDE	154545128	9.94	9812	0.016	-0.080	0.134	0.213	5.142115	15.324051	-1247.02	357.87
7	GUIDE	154547856	9.64	9822	0.113	0.043	0.101	0.167	5.263070	15.147472	-1985.36	169.01

2.4 Star Slots

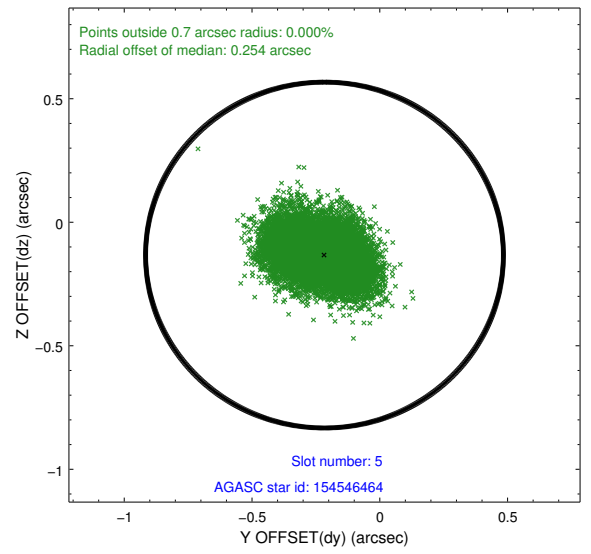
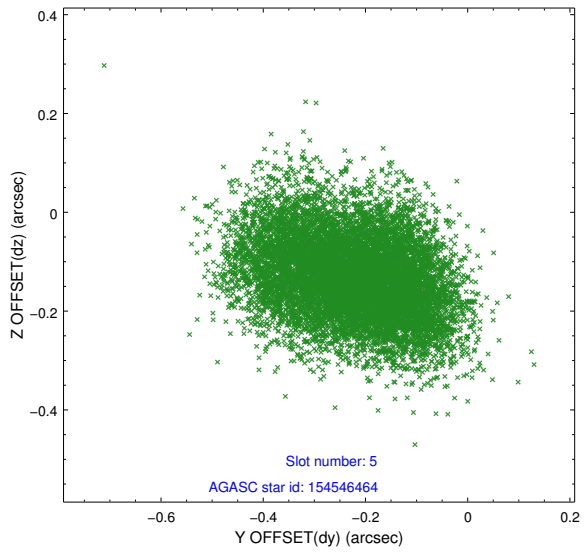
2.4.1 Slot 3



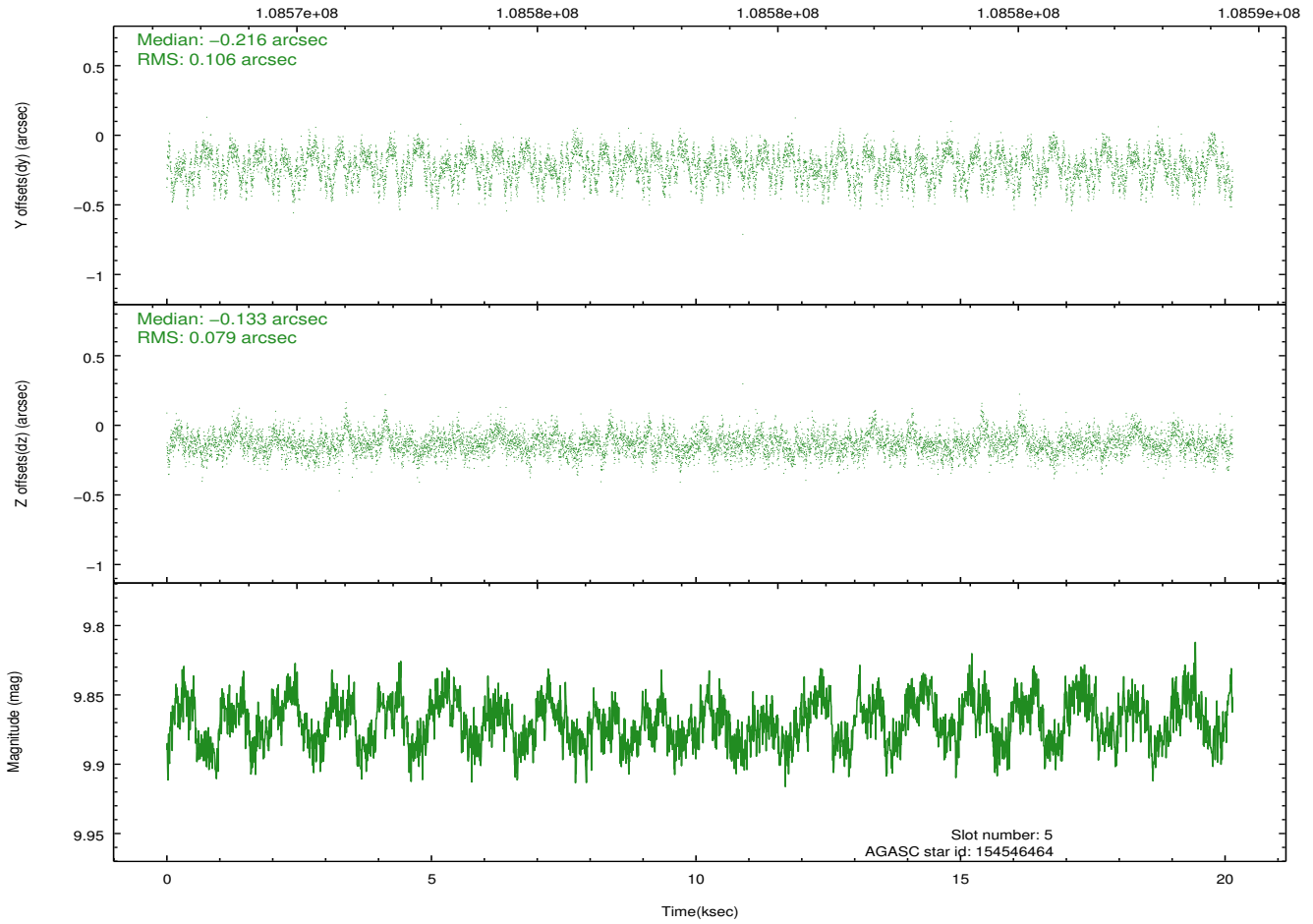
2.4.2 Slot 4



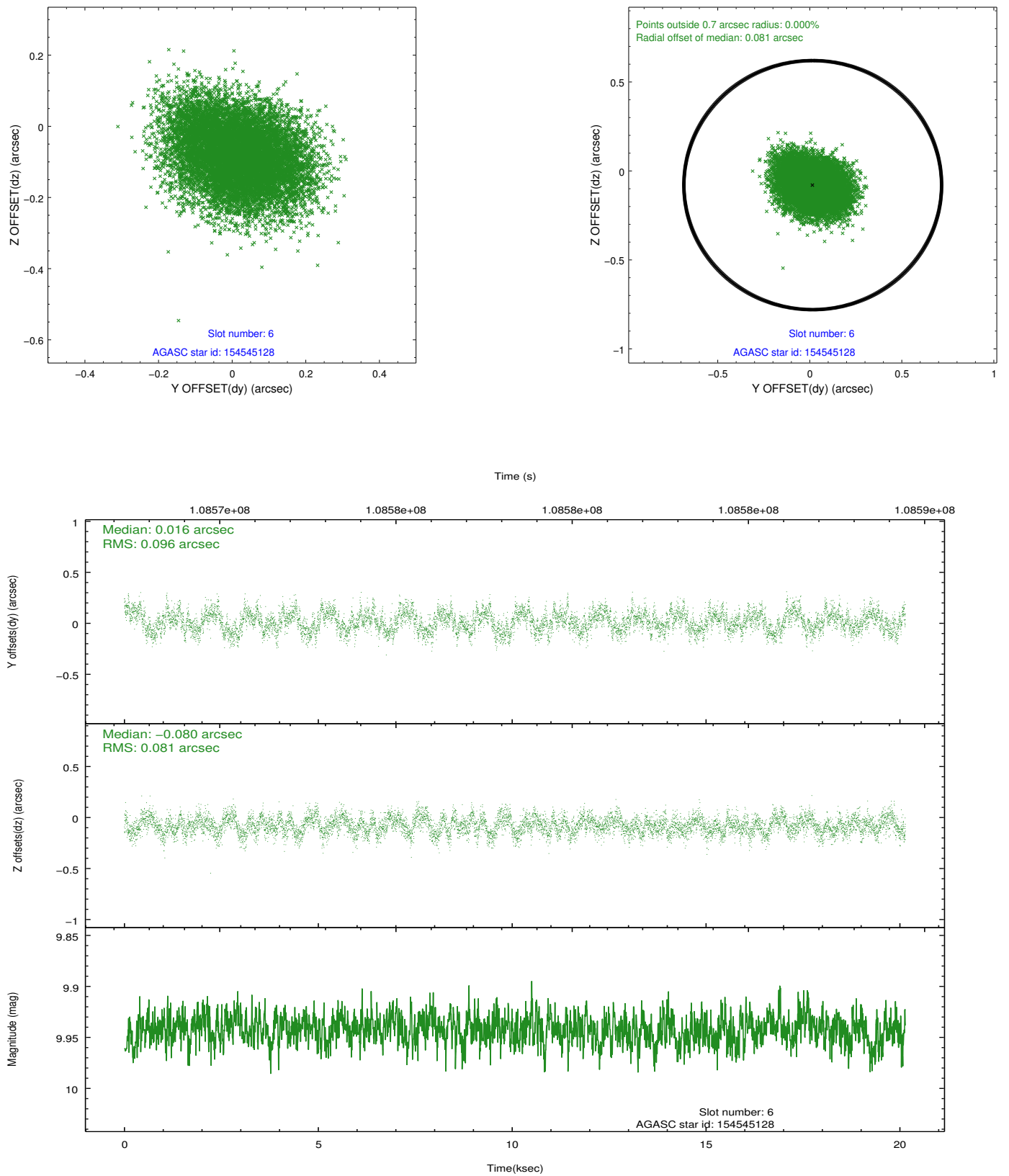
2.4.3 Slot 5



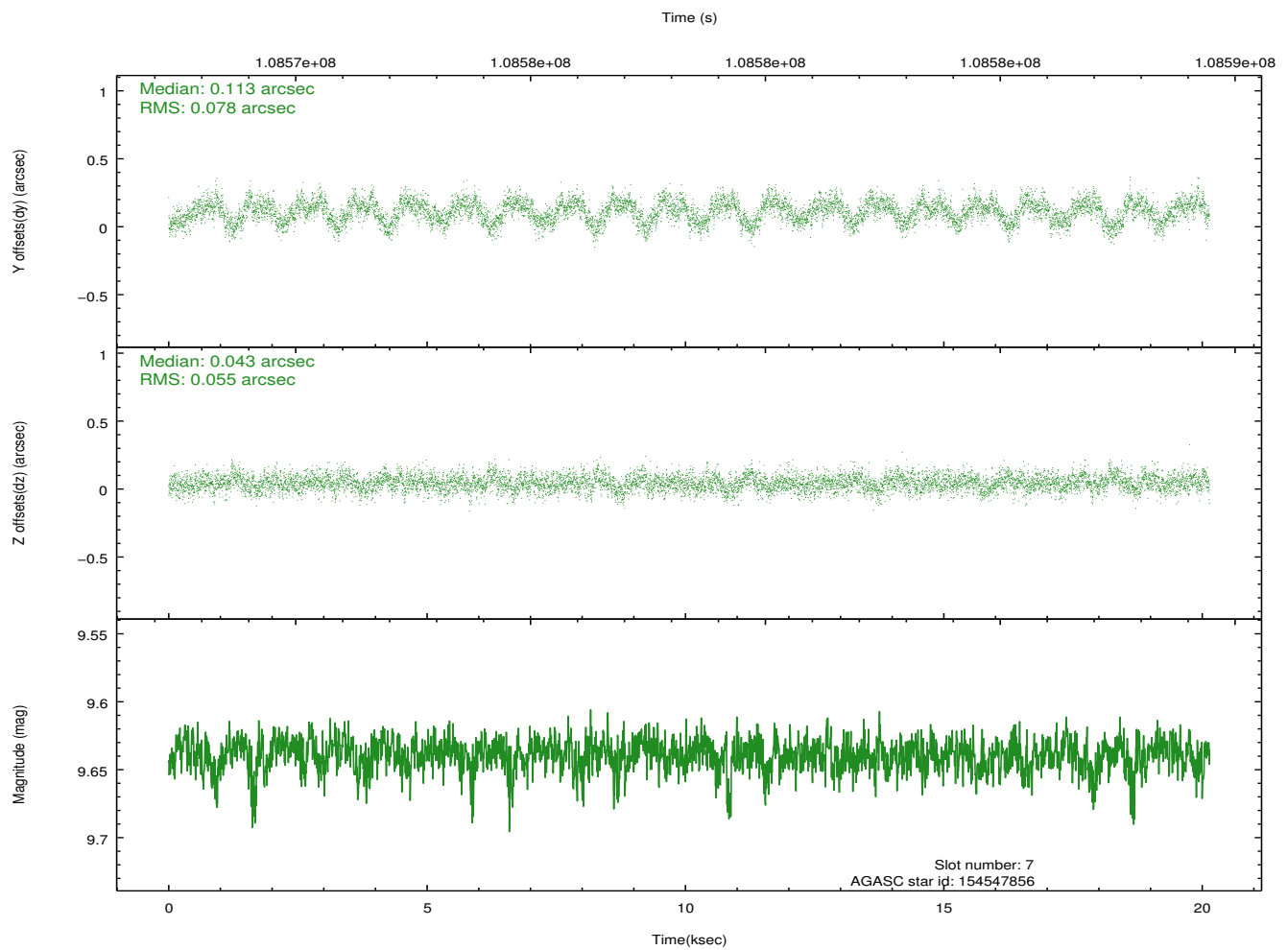
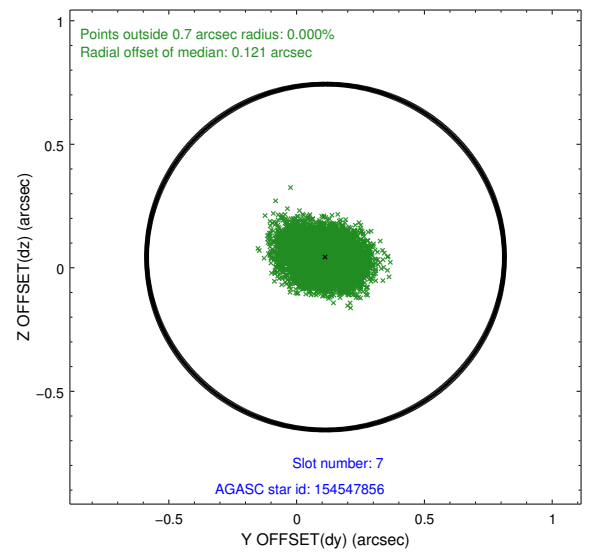
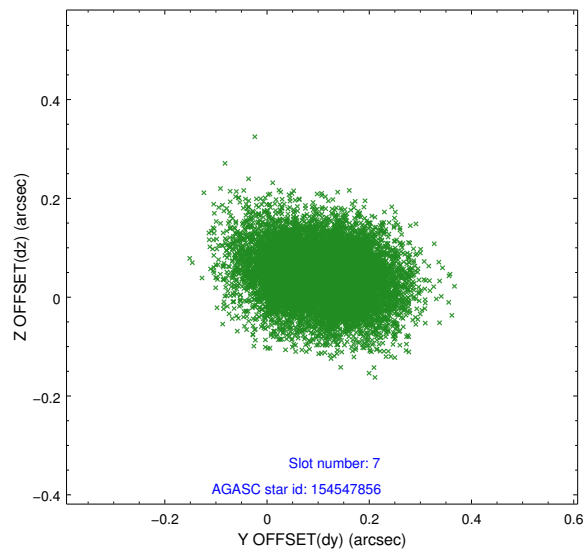
Time (s)



2.4.4 Slot 6

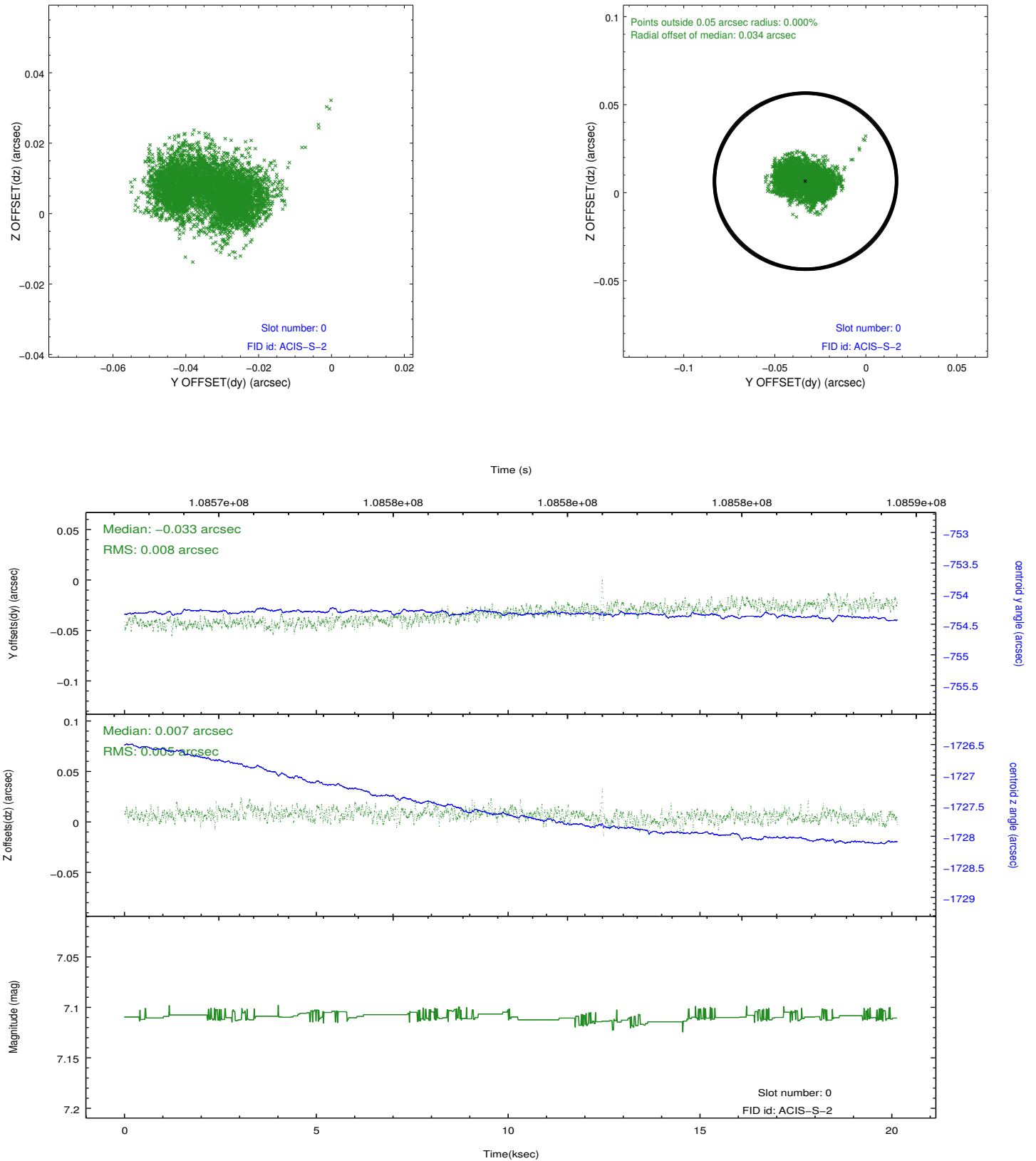


2.4.5 Slot 7

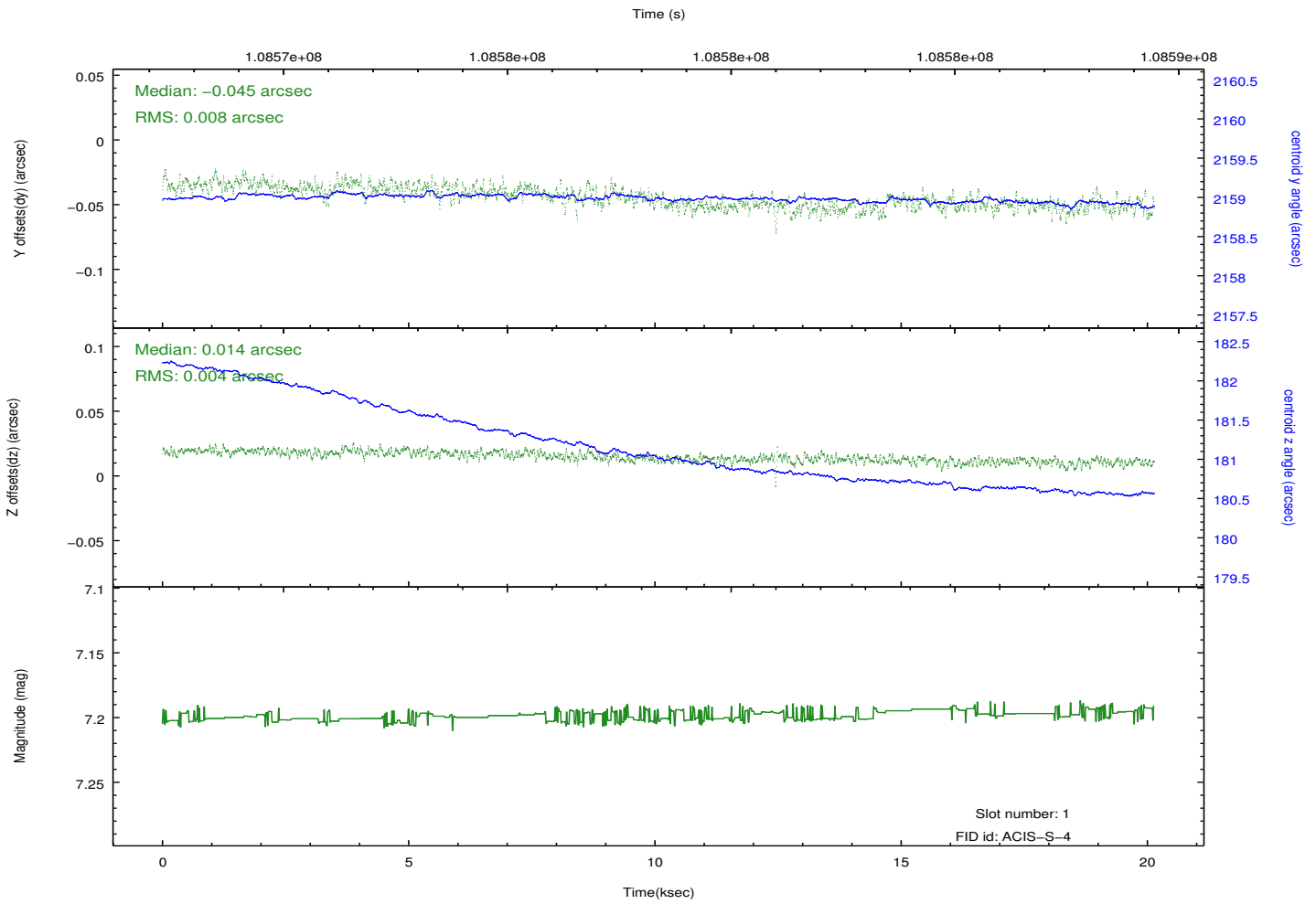
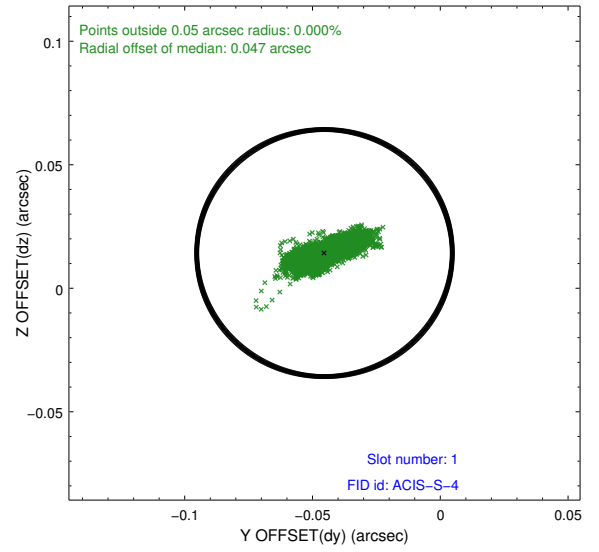
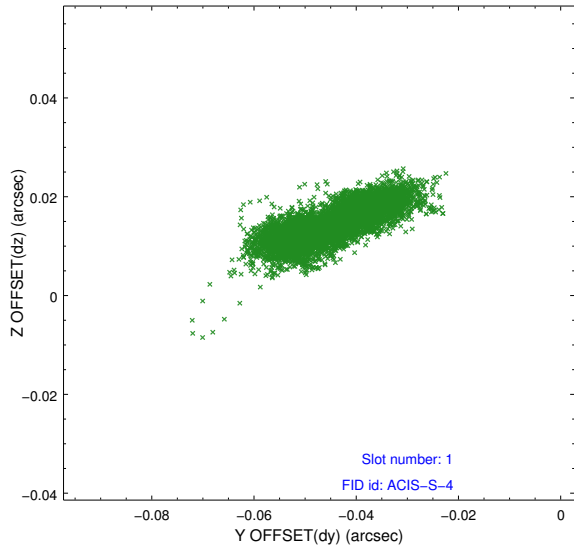


2.5 FID Slots

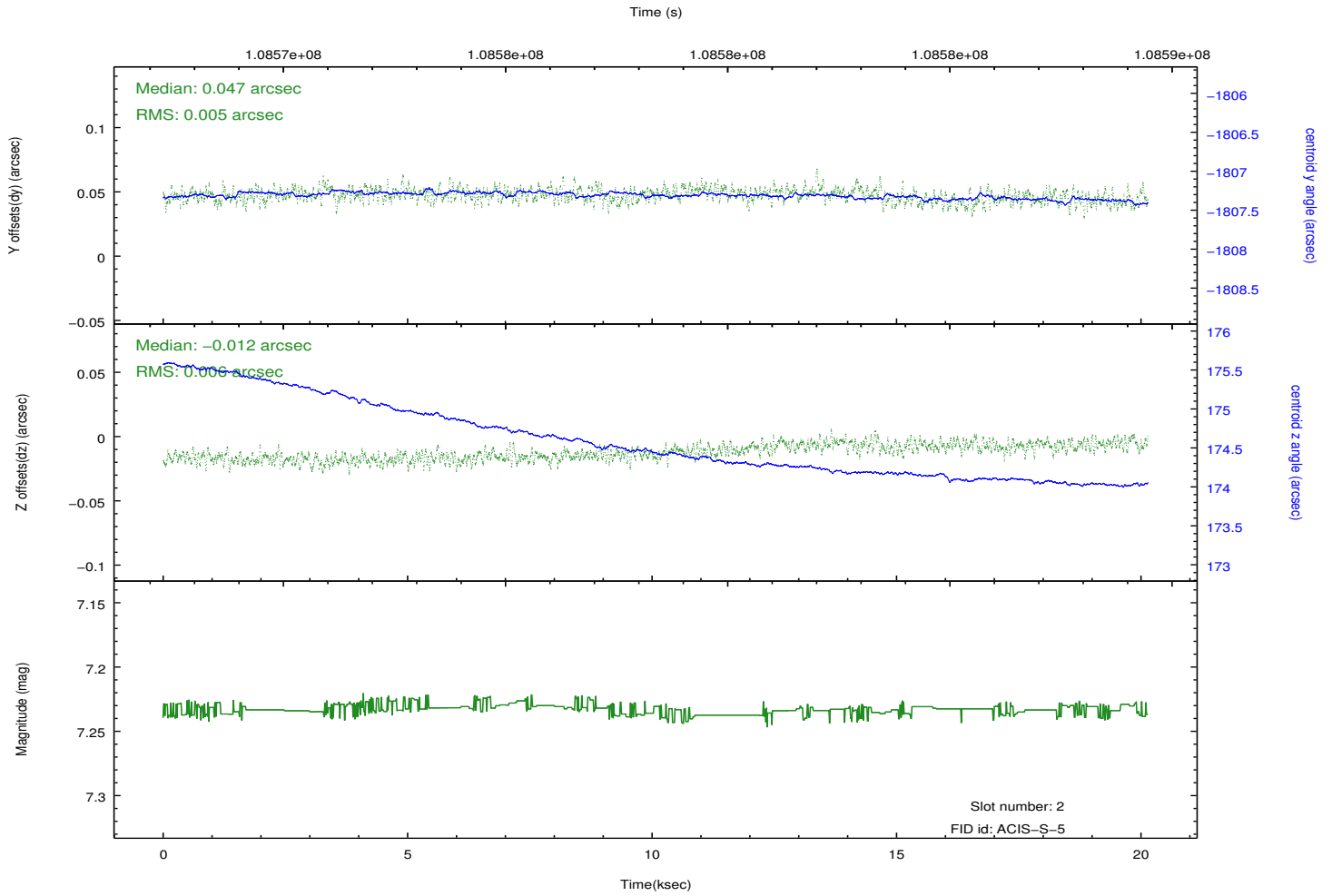
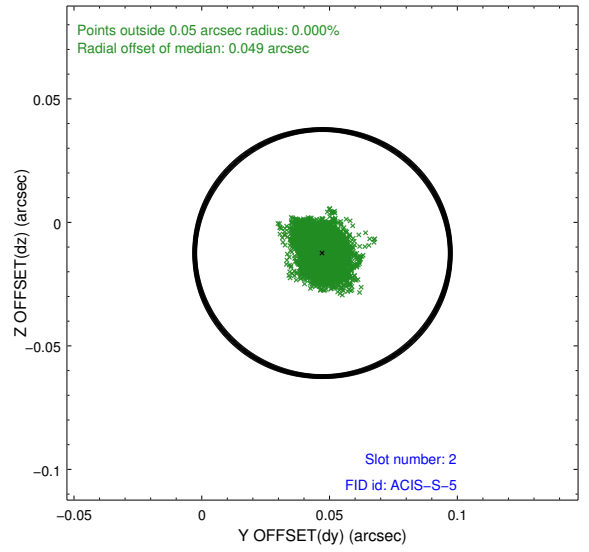
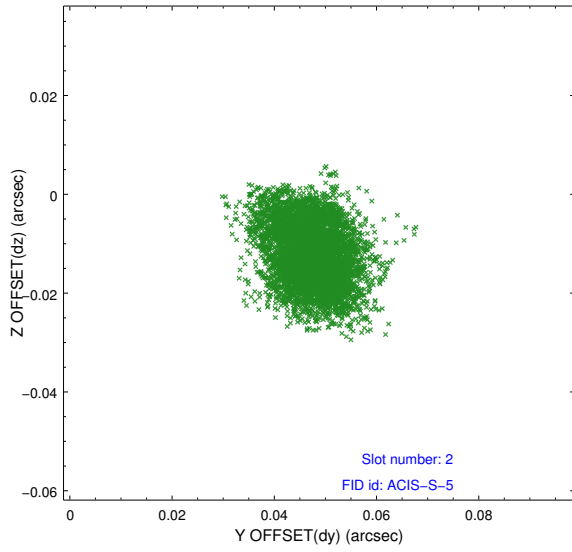
2.5.1 Slot 0



2.5.2 Slot 1



2.5.3 Slot 2



A Summary

A.1 Status

V&V Scientist	Jen Lauer
V&V Date (YYYY-MM-DD)	2012.09.20
V&V Edition	1
V&V Disposition and Status	OK
V&V Charge Time	20.1

A.2 Comments