

V&V Reference Report

L2 ASCDS Version : 10.4.3.1

Observation 16185 - L2 Version 2
Chandra X-Ray Center

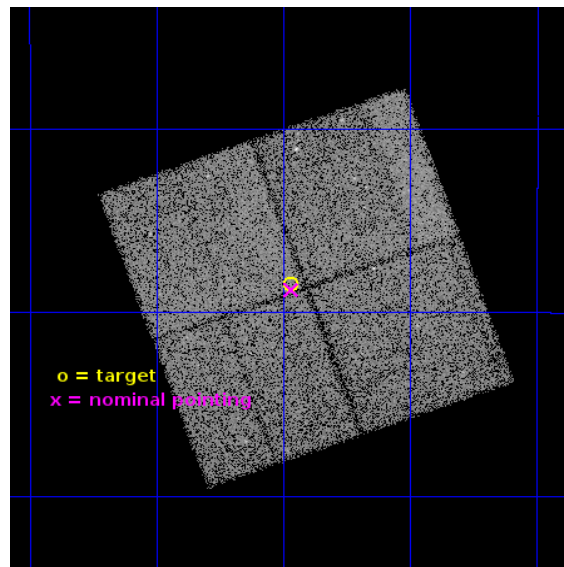
L2 Processing Date : Mar 30 2016

Contents

1	Front	2
2	OBI	3
2.1	OBI	3
2.1.1	Images	3
2.1.2	Bias	3
2.1.3	Parameters	4
2.1.4	Events	4
2.2	Compared Parameters	5
2.3	Aspect	6
2.4	Star Slots	9
2.4.1	Slot 3	9
2.4.2	Slot 4	10
2.4.3	Slot 5	11
2.4.4	Slot 7	12
2.5	FID Slots	13
2.5.1	Slot 0	13
2.5.2	Slot 1	14
2.5.3	Slot 2	15
A	Summary	16
A.1	Status	16
A.2	Comments	16

1 Front

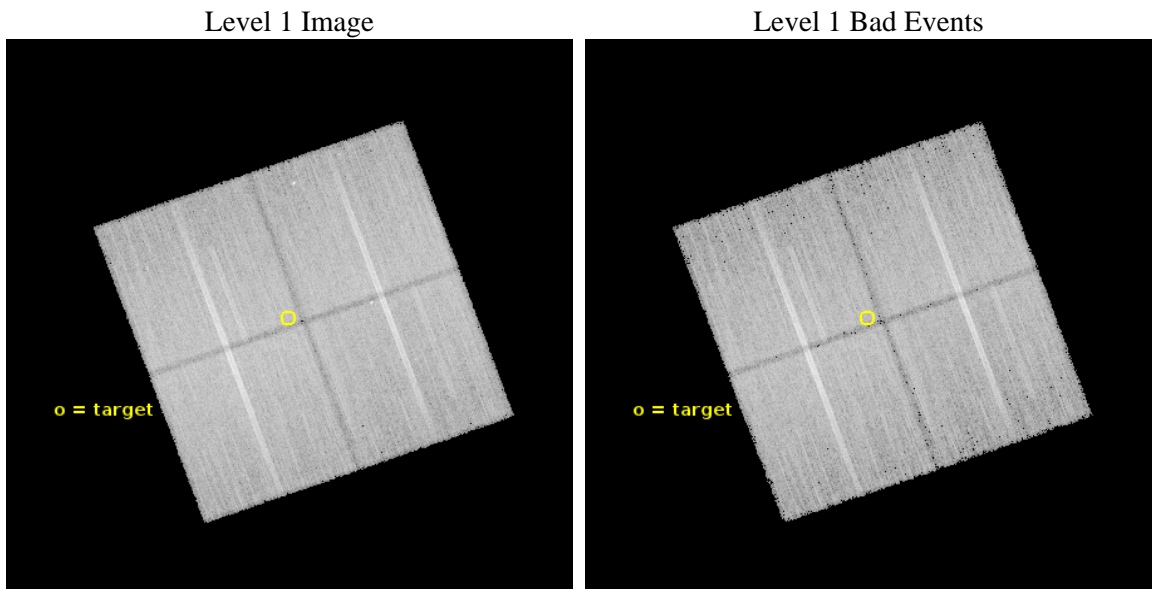
seq_num	901115	Sequence number
obs_id	16185	Observation id
title	The Chandra Deep Field-South: A Peerless Ultradeep Survey for Exploring the Distant X-ray Universe	Proposal title
observer	William Brandt	Principal investigator
object	Chandra Deep Field-South	Source name
dtcycle	0	
cycle	P	events from which exps? Prim/Second/Both
ra_targ	53.117083	Observer's specified target RA [deg]
dec_targ	-27.807333	Observer's specified target Dec [deg]
ra_nom	53.117039753919	Nominal RA [deg]
dec_nom	-27.812767643222	Nominal Dec [deg]
roll_nom	250.20868328302	Nominal Roll [deg]
revision	2	Processing version of data
ontime	49069.313207626	Sum of GTIs [s]
livetime	48428.186506266	Livetime [s]
ontime0	49069.190087676	Sum of GTIs [s]
ontime1	49072.372087955	Sum of GTIs [s]
ontime2	49069.272277236	Sum of GTIs [s]
ontime3	49069.313207626	Sum of GTIs [s]
l2events	111460	Number of level 2 events



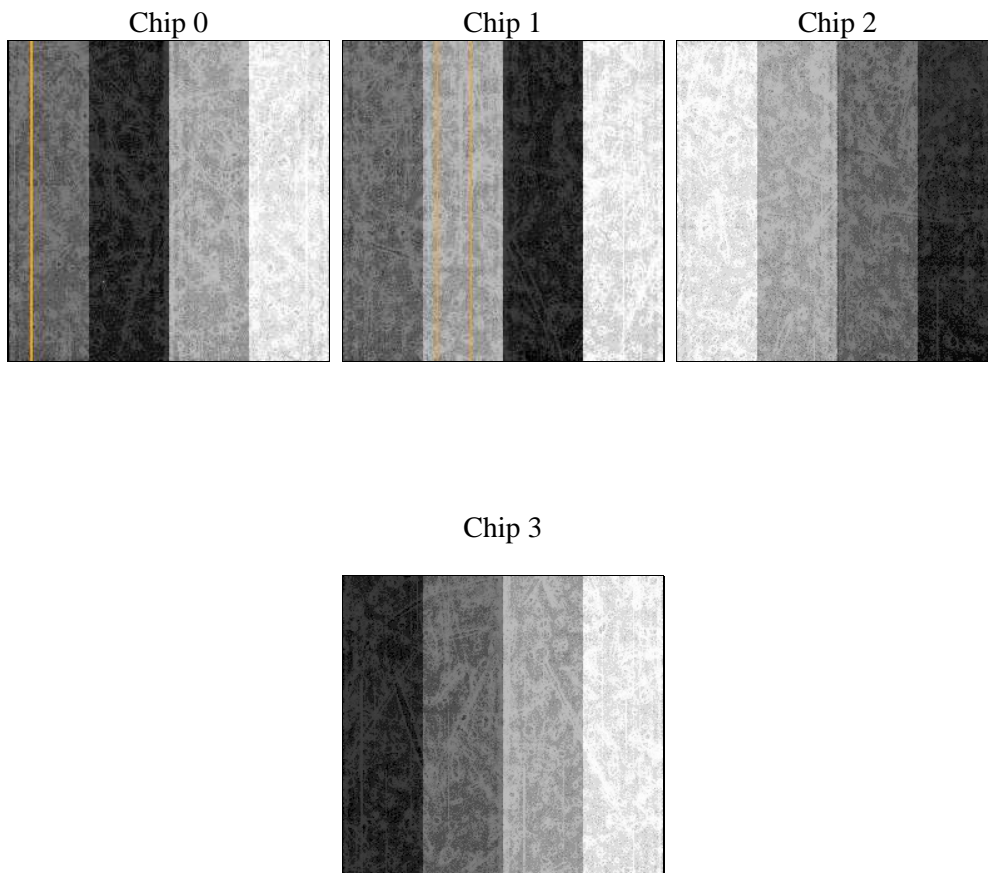
2 OBI

2.1 OBI

2.1.1 Images



2.1.2 Bias



2.1.3 Parameters

obi_num	2	Obi number	sched_exp_time	49000.000000	[s] Scheduled observation exposure time
ascdsver	10.4.3.1	Processing system revision	ontime	49069.313207626	Sum of GTIs [s]
caldsver	4.7.1	 	ontime0	49069.190087676	Sum of GTIs [s]
date	2016-03-30T04:24:19	Date and time of file creation	ontime1	49072.372087955	Sum of GTIs [s]
revision	2	Processing version of data	ontime2	49069.272277236	Sum of GTIs [s]
			ontime3	49069.313207626	Sum of GTIs [s]
			l1events	1107104	Number of level 1 events

2.1.4 Events

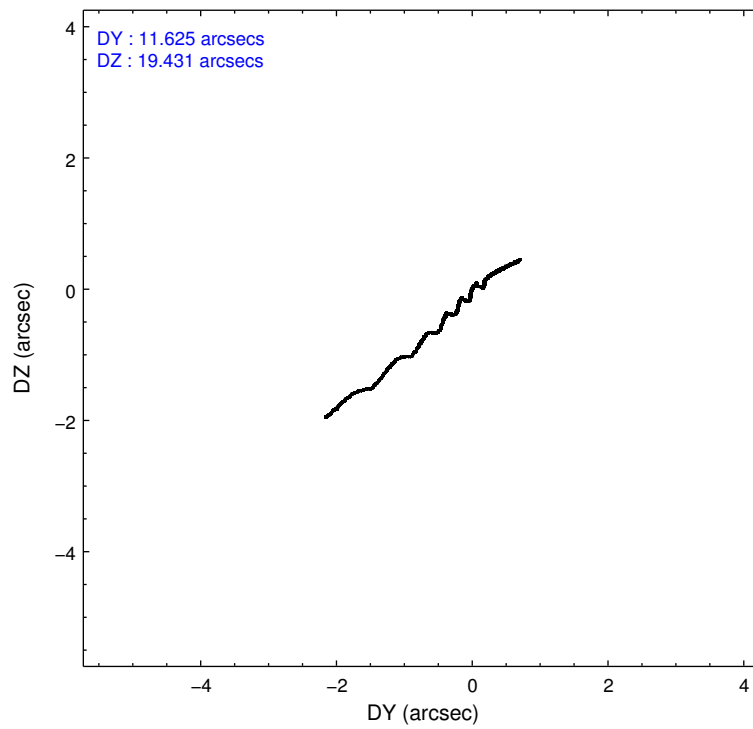
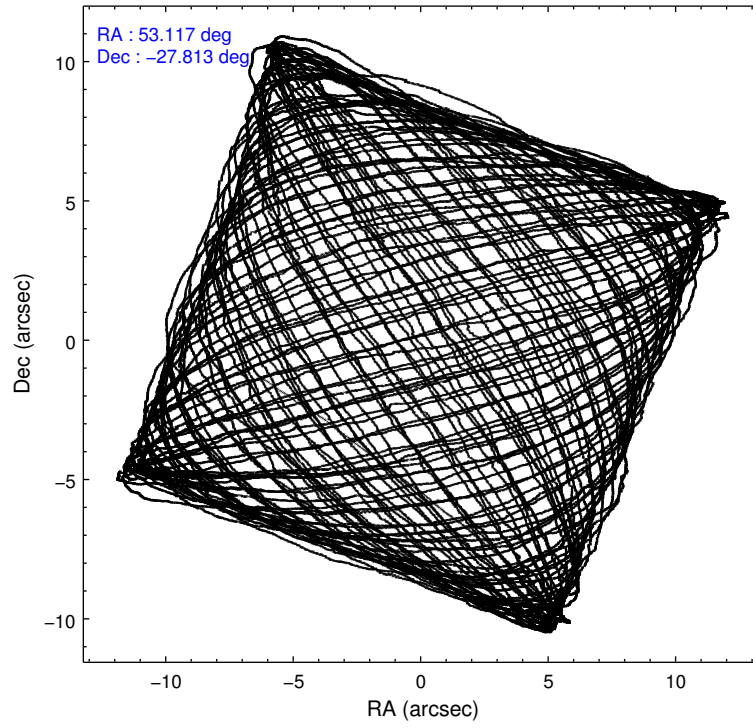
	ccd 0	ccd 1	ccd 2	ccd 3
level 1 events	263430	276229	286341	281104
rejected events	230308	238809	254777	248561
rejected %	87%	86%	88%	88%

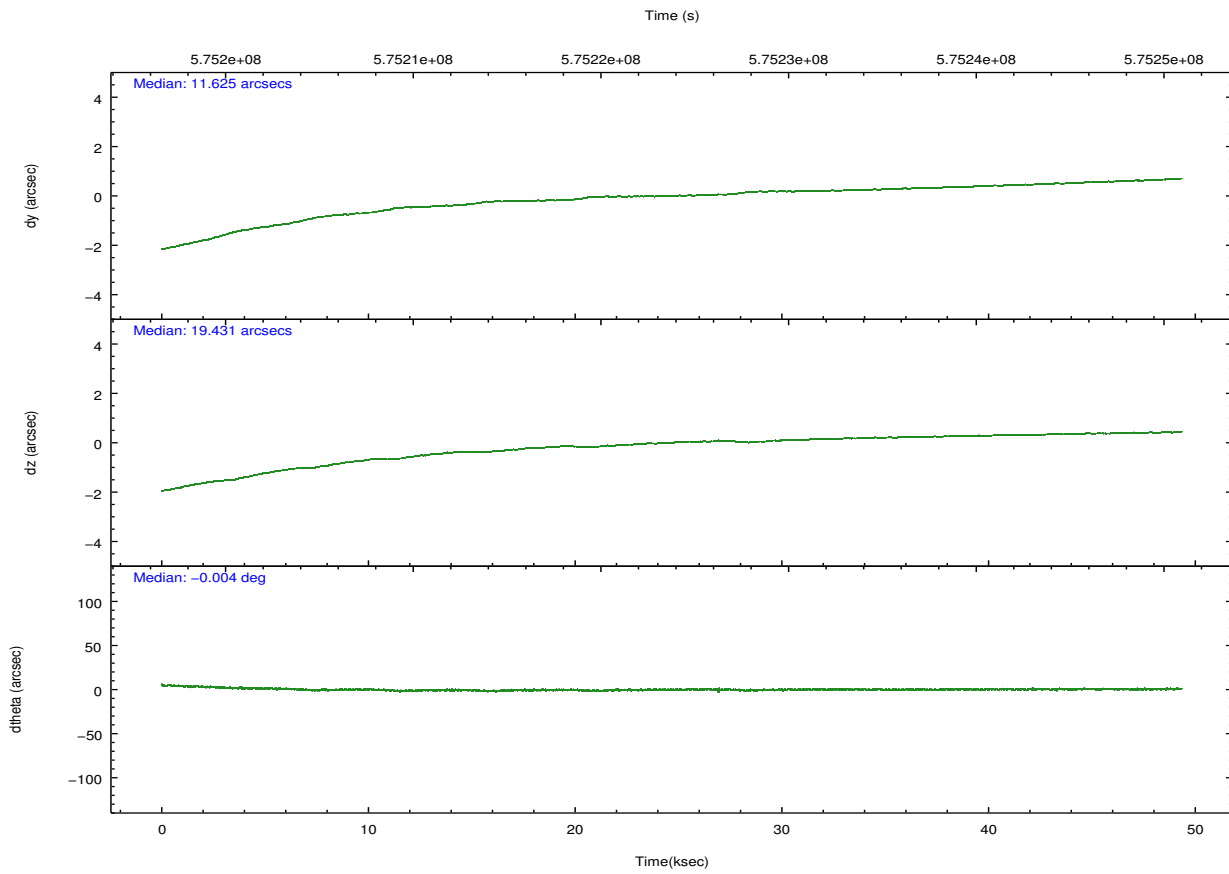
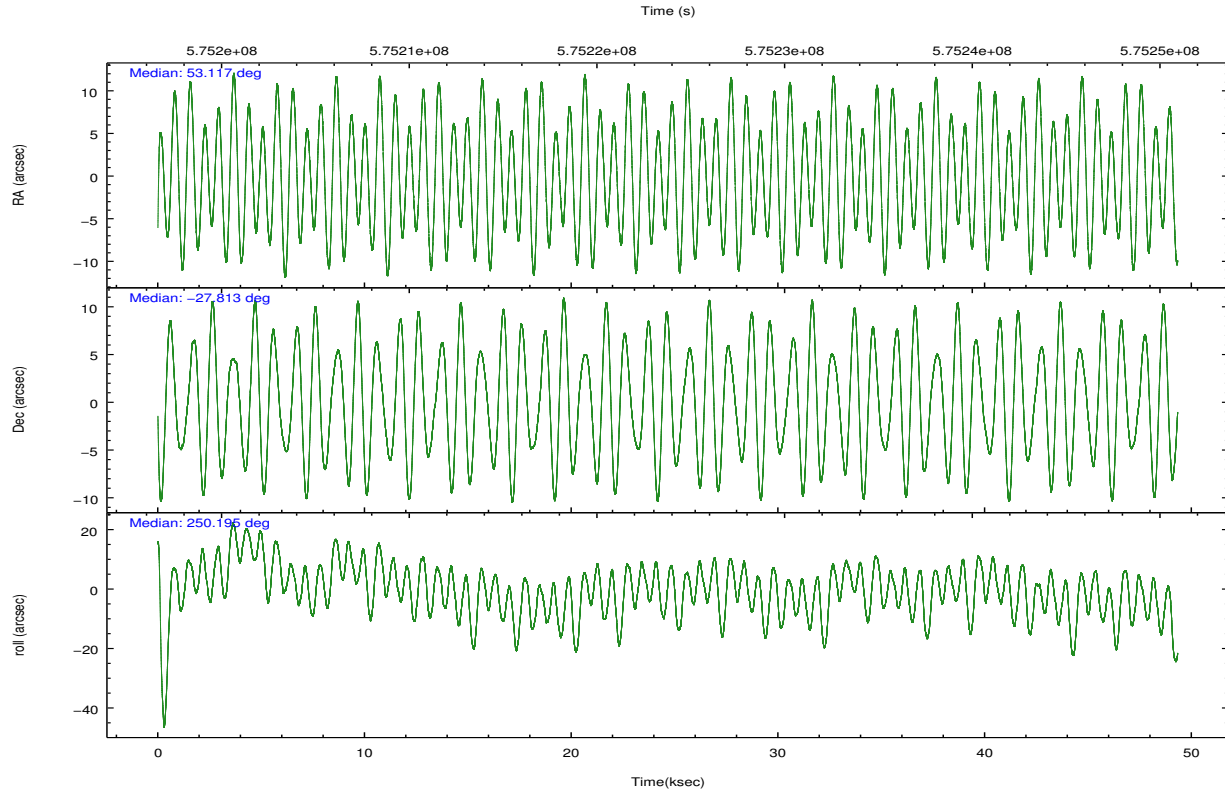
	ccd 0	ccd 1	ccd 2	ccd 3
grade 0 events	11235	13014	10951	11918
	4%	4%	3%	4%
grade 1 events	161	120	158	180
	0%	0%	0%	0%
grade 2 events	8562	9294	7914	7165
	3%	3%	2%	2%
grade 3 events	3370	3615	3208	3392
	1%	1%	1%	1%
grade 4 events	3202	3566	3204	3343
	1%	1%	1%	1%
grade 5 events	12560	13633	12012	14353
	4%	4%	4%	5%
grade 6 events	6758	7939	6289	6729
	2%	2%	2%	2%
grade 7 events	217582	225048	242605	234024
	82%	81%	84%	83%

2.2 Compared Parameters

Parameter	Planned	Actual	Parameter	Planned	Actual
Instrument	ACIS	ACIS	Obspar format version number	7	7
Detector	ACIS-0123	ACIS-0123	Obspar file type	PREDICTED	ACTUAL
Grating	NONE	NONE	Obspar update status	NONE	UPDATED
Data mode	VFAINT	VFAINT	Number of optional ACIS chips dropped	0	0
Observation mode	POINTING	POINTING	On-chip summing requested	N	N
[deg] Pointing RA	53.111404	53.11703975391885	Subarray requested	NONE	NONE
[deg] Pointing Dec	-27.785611	-27.81276764322213	Alternating exposures requested	N	N
[deg] Pointing Roll	249.997349	250.2086832830244	[s] Primary exposure time	0.000000	3.1
[mm] SIM focus pos	-0.782348	-0.7809083437167272			
[mm] SIM defocus	0	0.001439871863259334			
[mm] SIM translation stage pos	-233.592463	-233.5874344608287			
[mm] SIM translation stage offset	0	-0.005018542100998502			
[s] Observation start time (MET)	575199446.184000	575198345.8978699			
Observation start date	2016-03-24T09:36:18	2016-03-24T09:19:05			
[s] Observation end time (MET)	575248446.184000	575249575.4008			
Observation end date	2016-03-24T23:12:58	2016-03-24T23:32:55			
Read mode	TIMED	TIMED			

2.3 Aspect





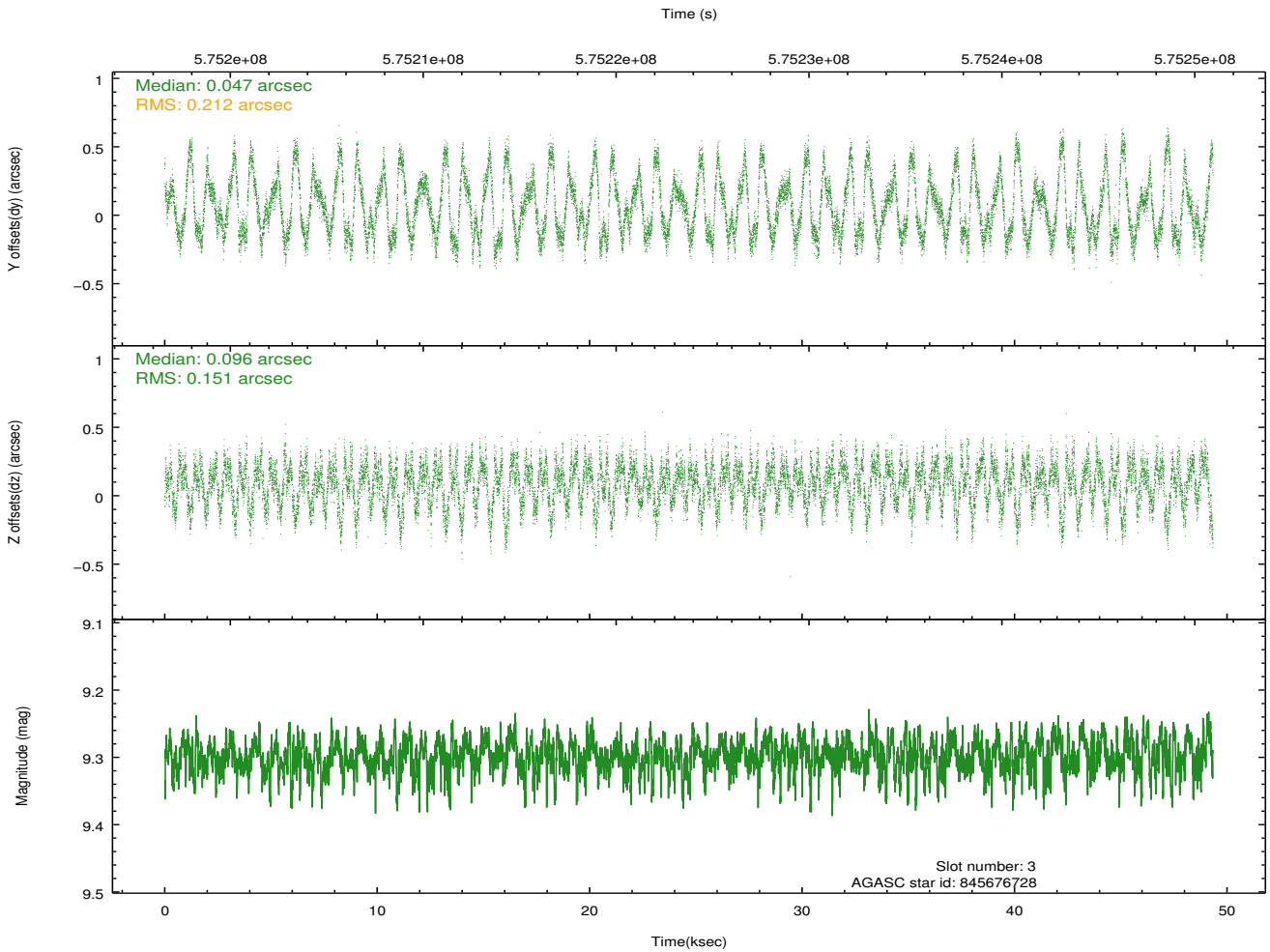
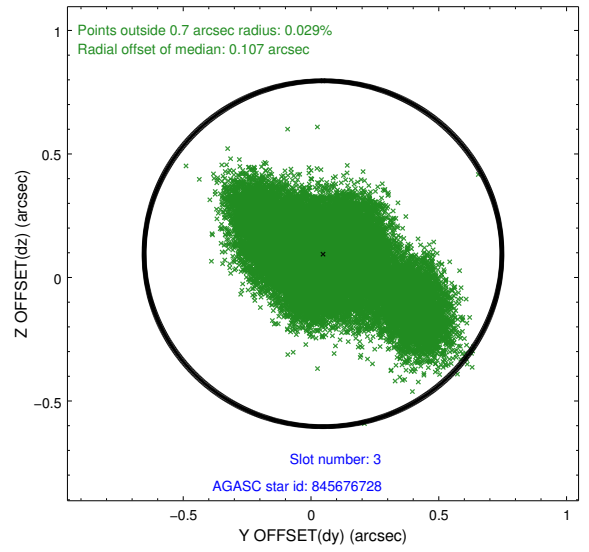
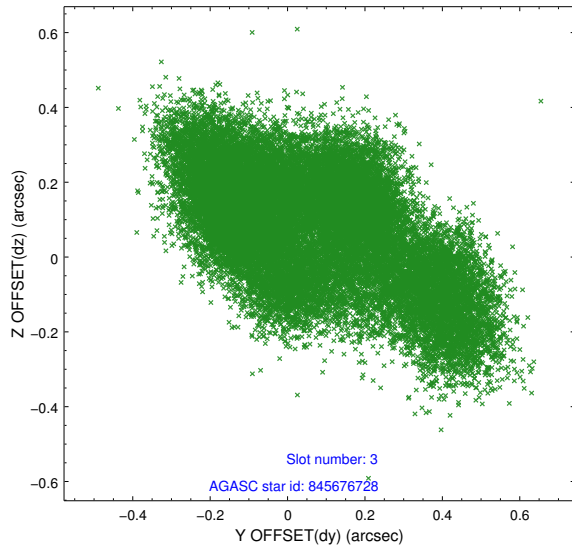
Slot Statistics

slot	status	used	id	mag	n_pts	med_dy	med_dz	dr1	dr2	ra	dec	mean_y	mean_z
0	FID		ACIS-I-1	7.24	12033	0.074	-0.022	0.021	0.034	0.000000	0.000000	928.20	-842.91
1	FID		ACIS-I-5	7.25	12030	-0.297	0.055	0.011	0.026	0.000000	0.000000	-1820.35	1054.58
2	FID		ACIS-I-6	7.25	12033	0.131	0.035	0.023	0.032	0.000000	0.000000	393.74	1699.11
3	GUIDE	used	845676728	9.30	24039	0.047	0.096	0.262	0.474	52.877179	-27.664318	-153.46	-850.87
4	GUIDE	used	845676936	9.49	24041	0.033	0.021	0.190	0.319	52.843773	-27.880153	612.23	-682.91
5	GUIDE	used	845808496	10.15	24031	0.130	0.065	0.244	0.400	53.777917	-27.725281	-925.12	1923.30
6	OMITTED			0.00	0	0.000	0.000	0.000	0.000	0.000000	0.000000	0.00	0.00
7	GUIDE	used	845815128	10.09	23994	-0.202	-0.166	0.258	0.412	53.509794	-28.102676	641.85	1579.98

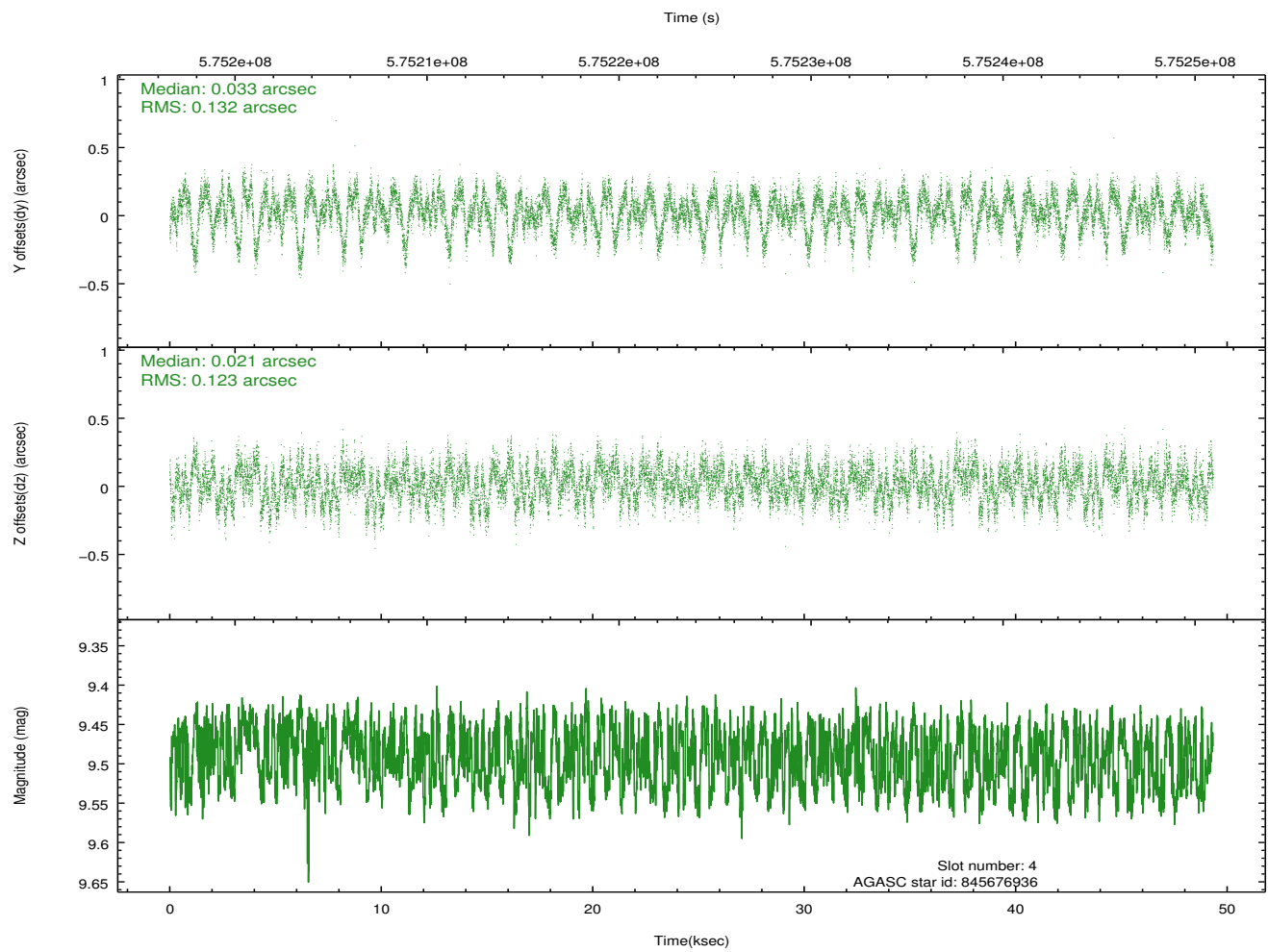
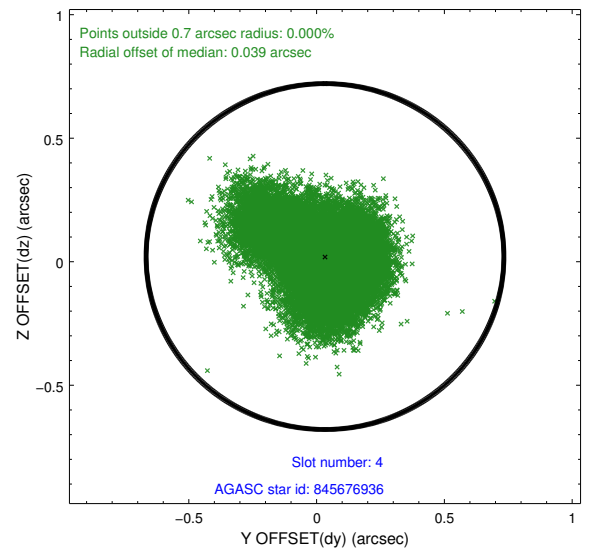
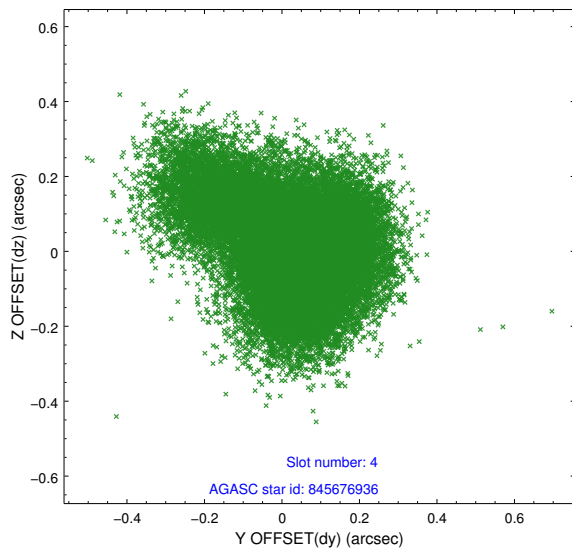
∞

2.4 Star Slots

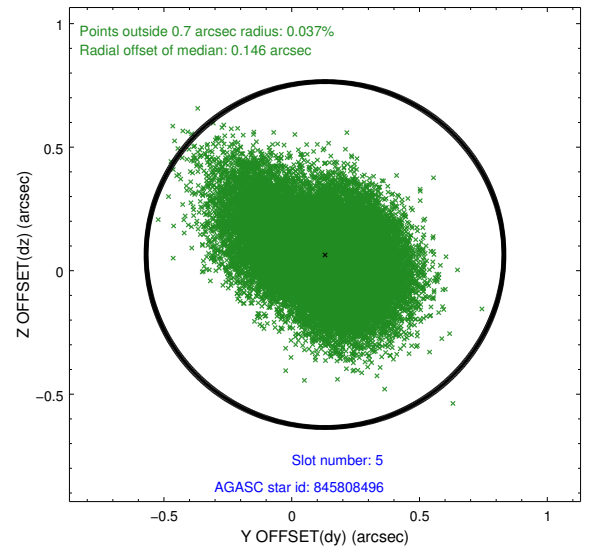
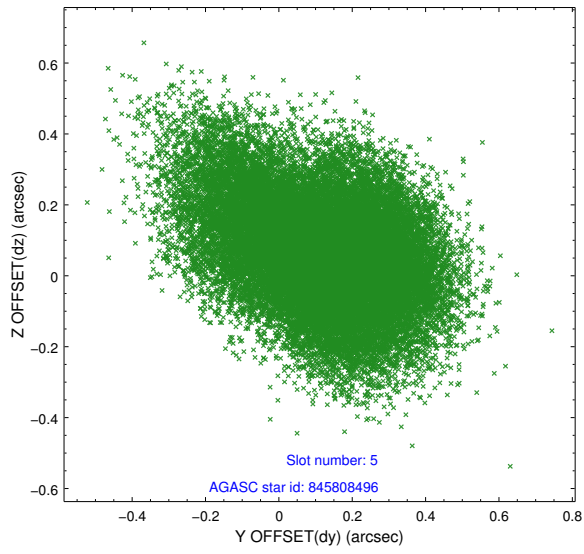
2.4.1 Slot 3



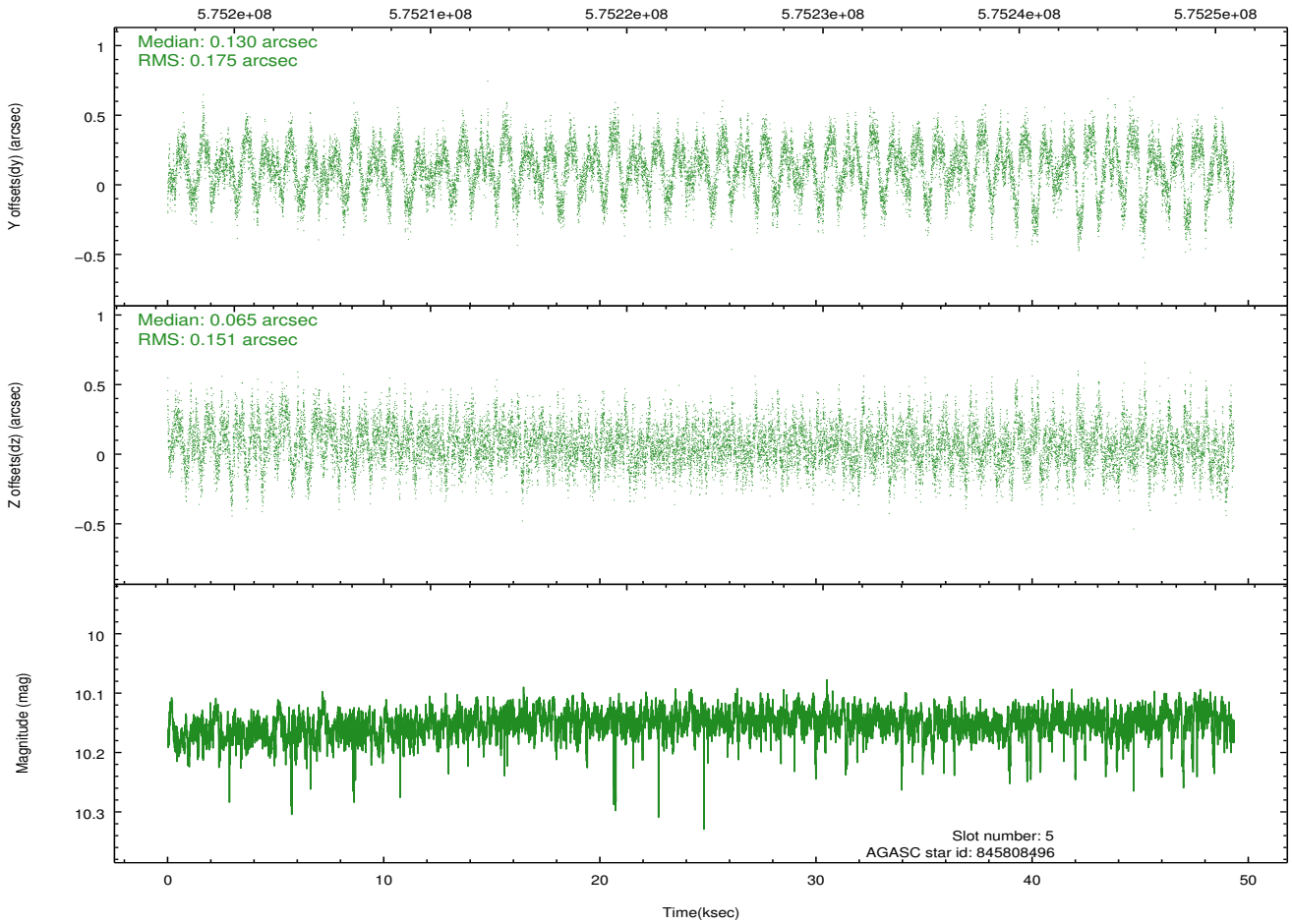
2.4.2 Slot 4



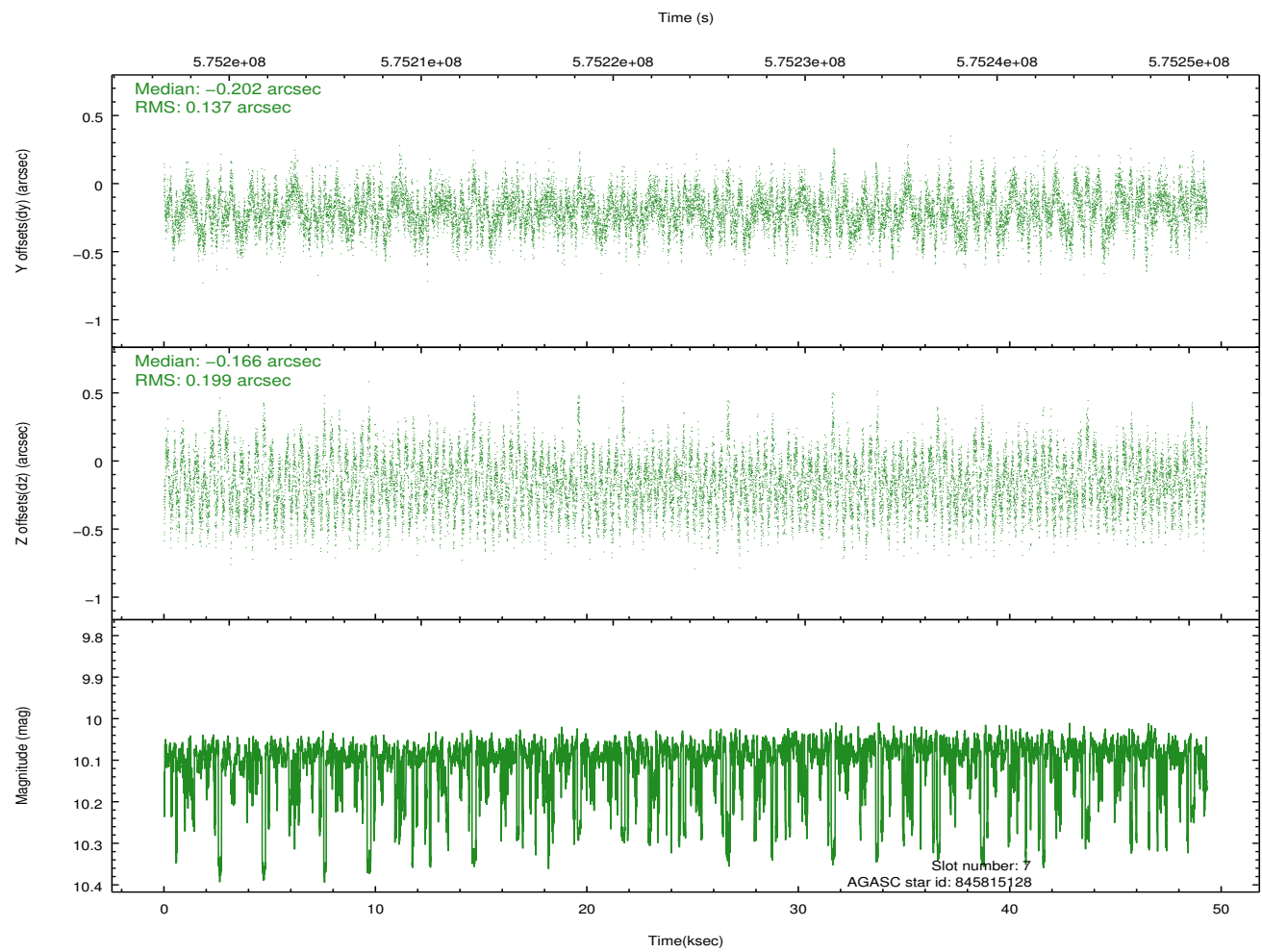
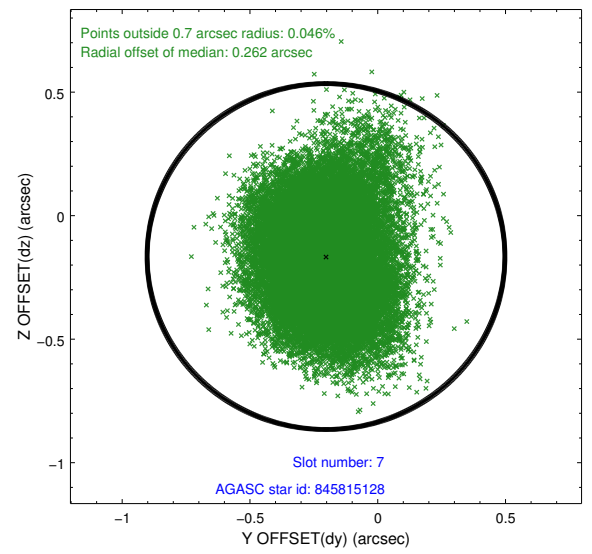
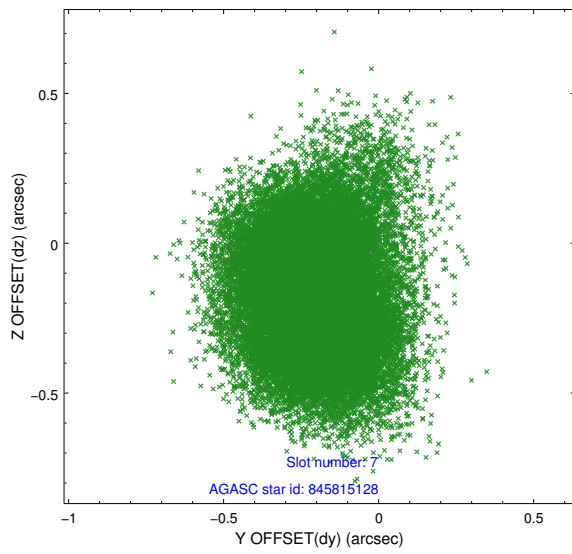
2.4.3 Slot 5



Time (s)

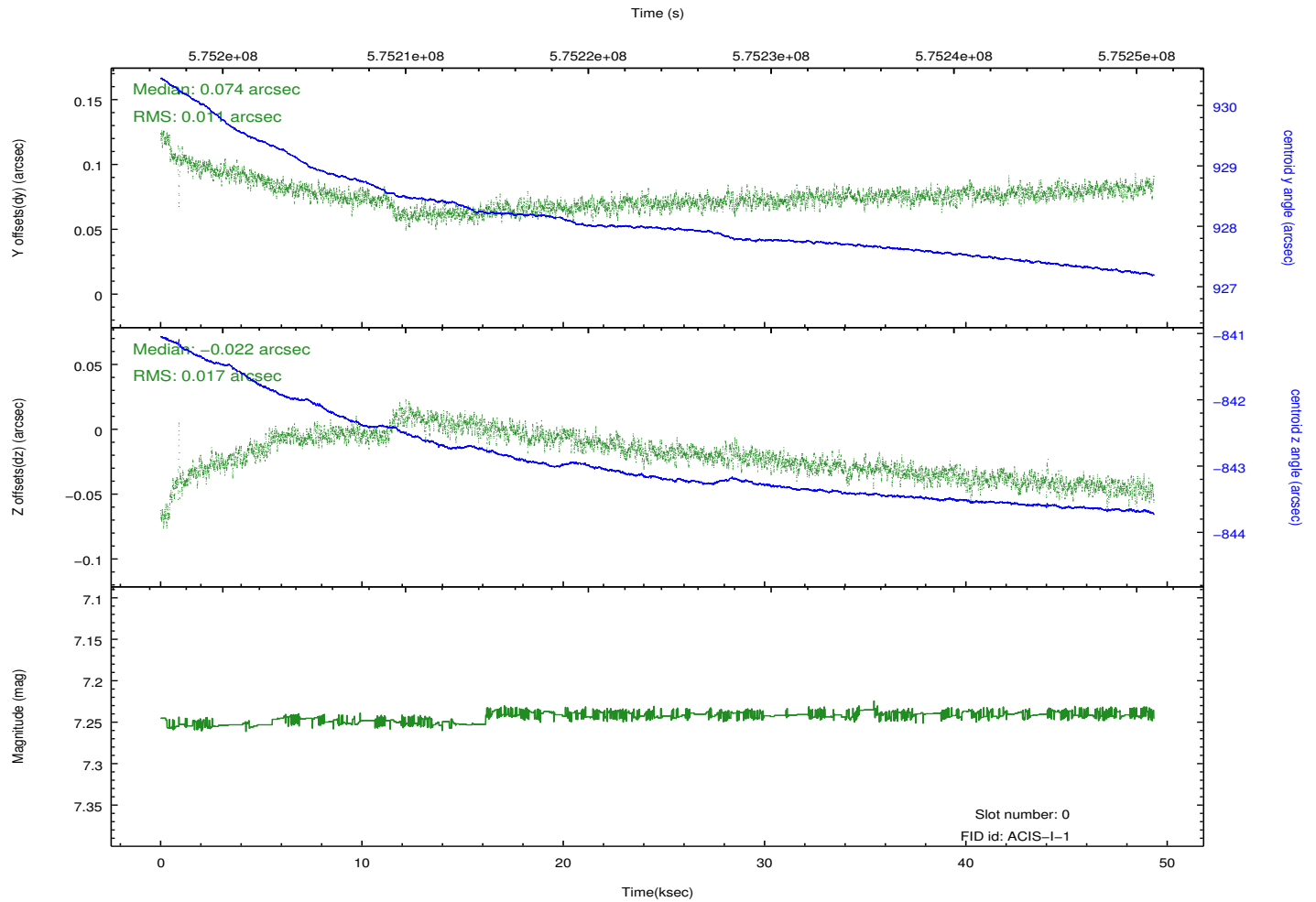
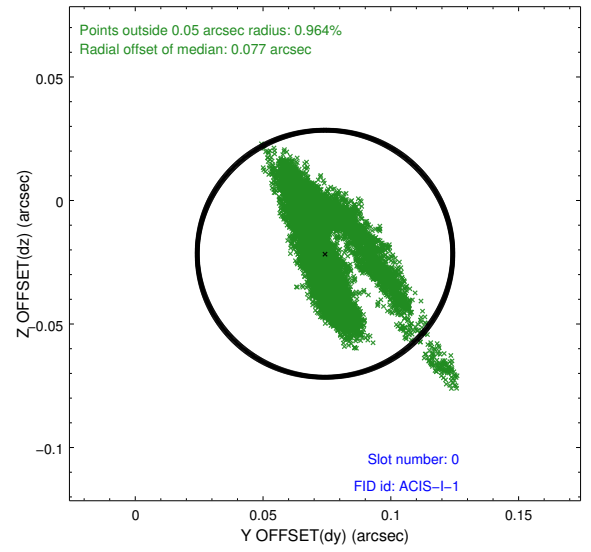
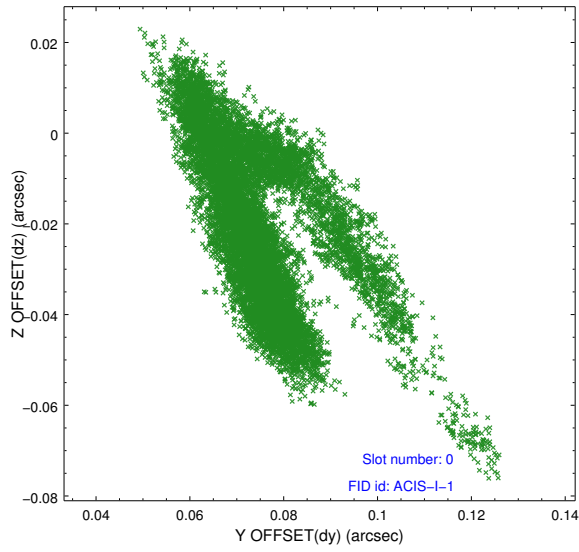


2.4.4 Slot 7

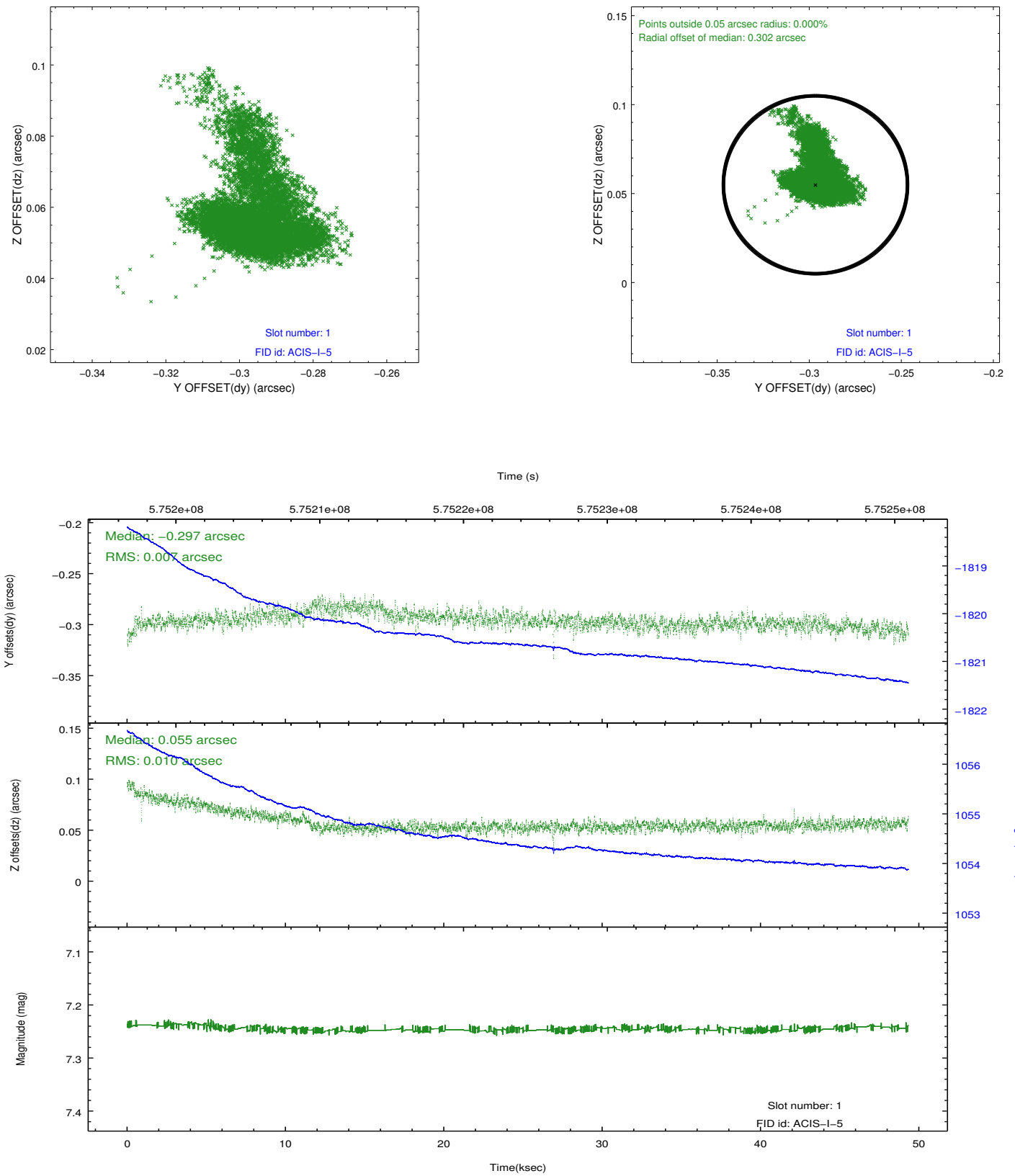


2.5 FID Slots

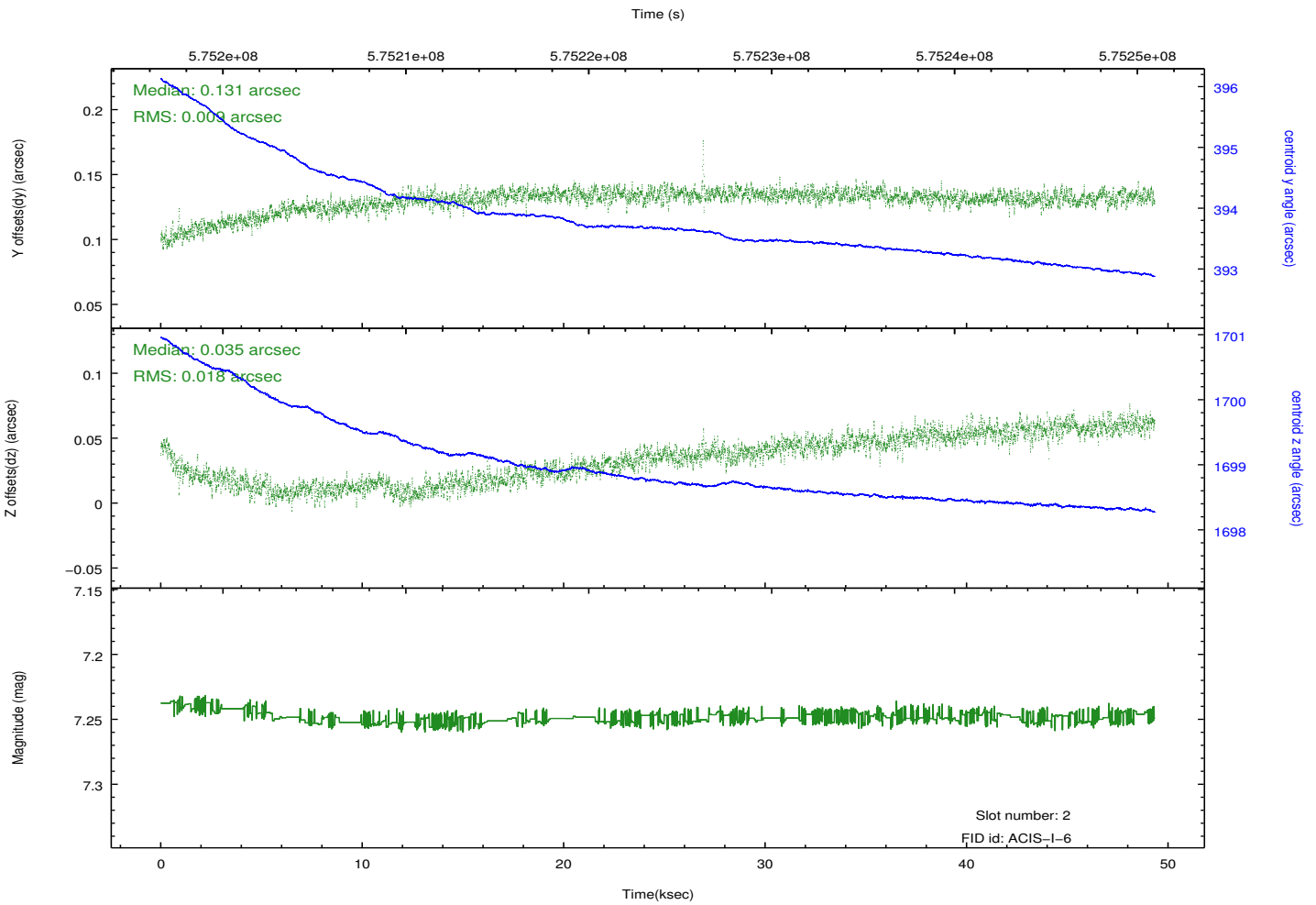
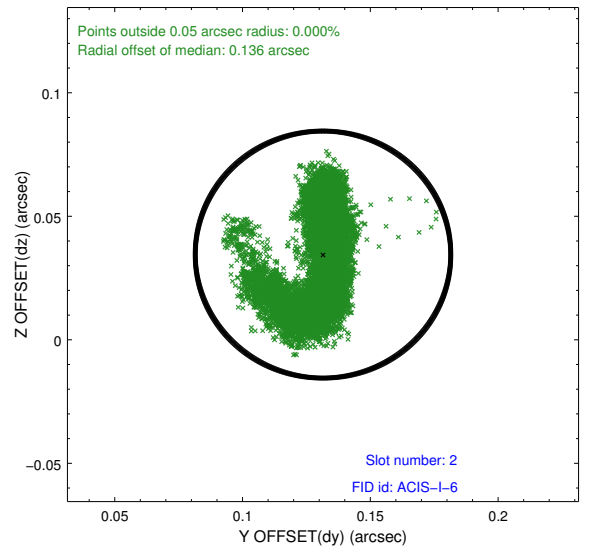
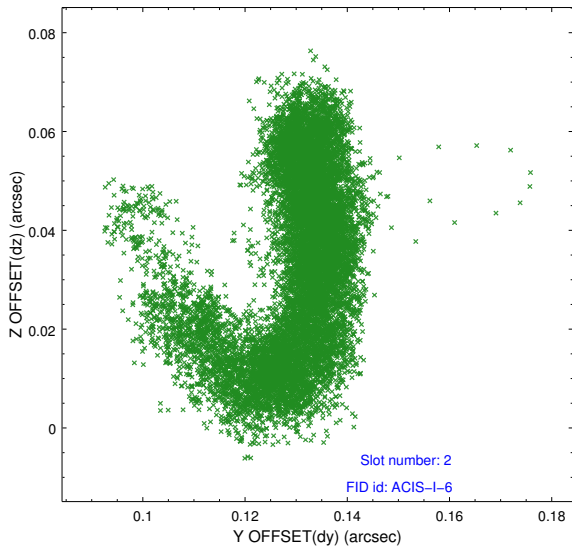
2.5.1 Slot 0



2.5.2 Slot 1



2.5.3 Slot 2



A Summary

A.1 Status

V&V Scientist	Jen Lauer
V&V Date (YYYY-MM-DD)	2016.03.30
V&V Edition	1
V&V Disposition and Status	OK
V&V Charge Time	49.069313207626

A.2 Comments

The guide star in slot 6 was removed from the aspect solution due to poor data quality. The aspect solution is improved by the removal of this guide star from the solution.