

# V&V Reference Report

## L2 ASCDS Version : 8.4.5

Observation 1625 - L2 Version 3  
Chandra X-Ray Center

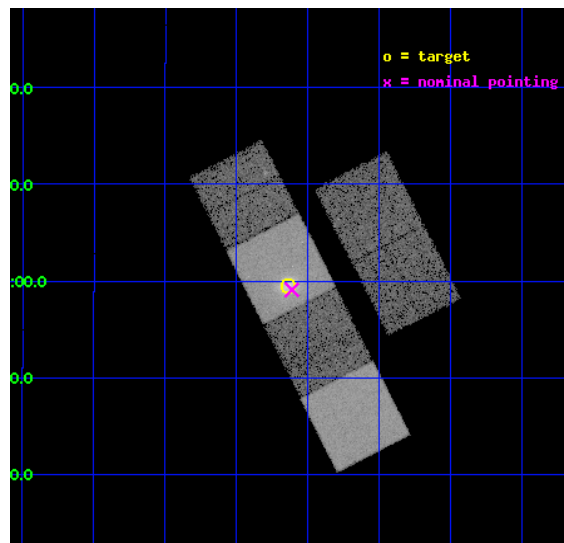
L2 Processing Date : Sep 21 2012

## Contents

<b>1</b>	<b>Front</b>	<b>2</b>
<b>2</b>	<b>OBI</b>	<b>3</b>
2.1	OBI . . . . .	3
2.1.1	Images . . . . .	3
2.1.2	Bias . . . . .	3
2.1.3	Parameters . . . . .	4
2.1.4	Events . . . . .	4
2.2	Compared Parameters . . . . .	5
2.3	Aspect . . . . .	6
2.4	Star Slots . . . . .	9
2.4.1	Slot 3 . . . . .	9
2.4.2	Slot 4 . . . . .	10
2.4.3	Slot 5 . . . . .	11
2.4.4	Slot 6 . . . . .	12
2.4.5	Slot 7 . . . . .	13
2.5	FID Slots . . . . .	14
2.5.1	Slot 0 . . . . .	14
2.5.2	Slot 1 . . . . .	15
2.5.3	Slot 2 . . . . .	16
<b>A</b>	<b>Summary</b>	<b>17</b>
A.1	Status . . . . .	17
A.2	Comments . . . . .	17

# 1 Front

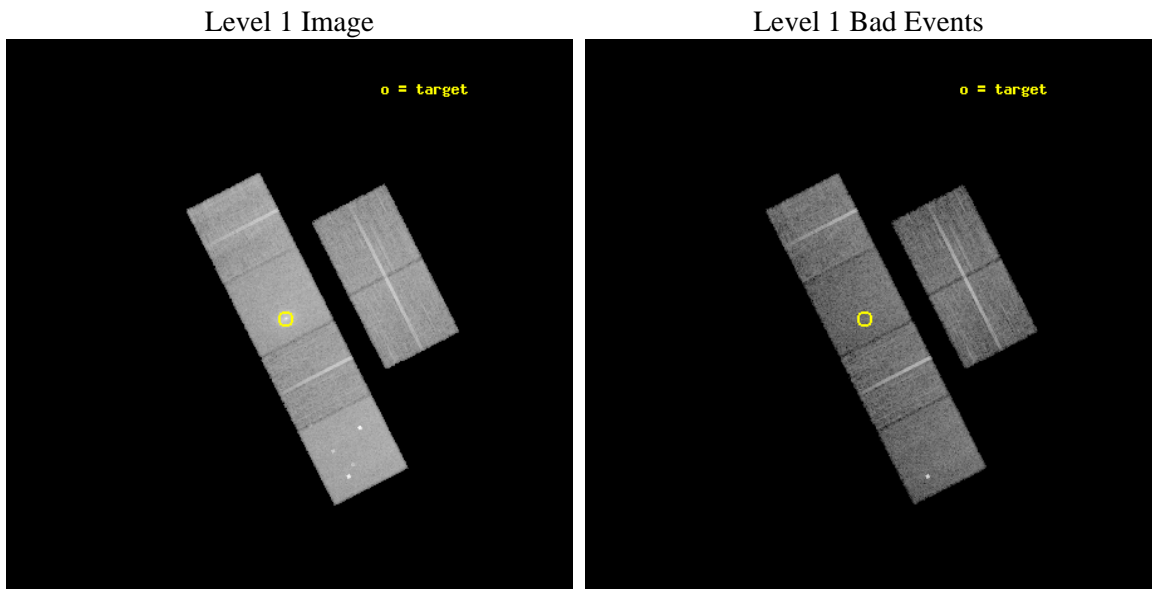
seq_num	700241	Sequence number
obs_id	1625	Observation id
title	STUDIES OF RADIO JETS AND THE NARROW LINE REGIONS OF ACTIVE GALAXIES	&#160
observer	Professor Andrew Wilson	Principal investigator
object	3C348 (HERCULES A)	Source name
dtycle	0	&#160
cycle	P	events from which exps? Prim/Second/Both
ra_targ	252.784167	Observer's specified target RA [deg]
dec_targ	4.992722	Observer's specified target Dec [deg]
ra_nom	252.77825129196	Nominal RA [deg]
dec_nom	4.9849659890546	Nominal Dec [deg]
roll_nom	243.00606591791	Nominal Roll [deg]
revision	3	Processing version of data
ontime	14985.600013942	Sum of GTIs [s]
livetime	14795.84332332	Livetime [s]
ontime2	14985.600013942	Sum of GTIs [s]
ontime3	14985.600013942	Sum of GTIs [s]
ontime5	14985.600013942	Sum of GTIs [s]
ontime6	14985.600013942	Sum of GTIs [s]
ontime7	14985.600013942	Sum of GTIs [s]
ontime8	14985.600013942	Sum of GTIs [s]
l2events	173248	Number of level 2 events



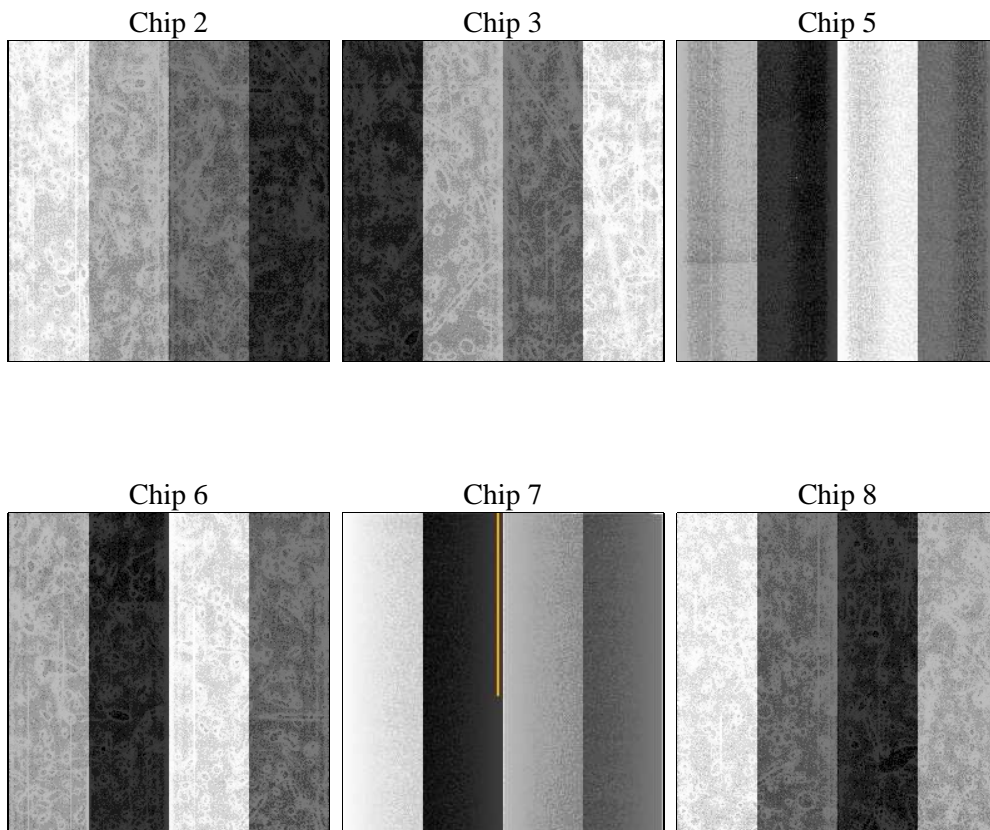
## 2 OBI

### 2.1 OBI

#### 2.1.1 Images



#### 2.1.2 Bias



### 2.1.3 Parameters

obi_num	1	Obi number	sched_exp_time	15300.000000	[s] Scheduled observation exposure time
ascdsver	8.4.5	Processing system revision	ontime	14985.600013942	Sum of GTIs [s]
caldsver	4.5.1.1	&#160	ontime2	14985.600013942	Sum of GTIs [s]
date	2012-09-21T09:15:04	Date and time of file creation	ontime3	14985.600013942	Sum of GTIs [s]
revision	3	Processing version of data	ontime5	14985.600013942	Sum of GTIs [s]
			ontime6	14985.600013942	Sum of GTIs [s]
			ontime7	14985.600013942	Sum of GTIs [s]
			ontime8	14985.600013942	Sum of GTIs [s]
			l1events	716169	Number of level 1 events

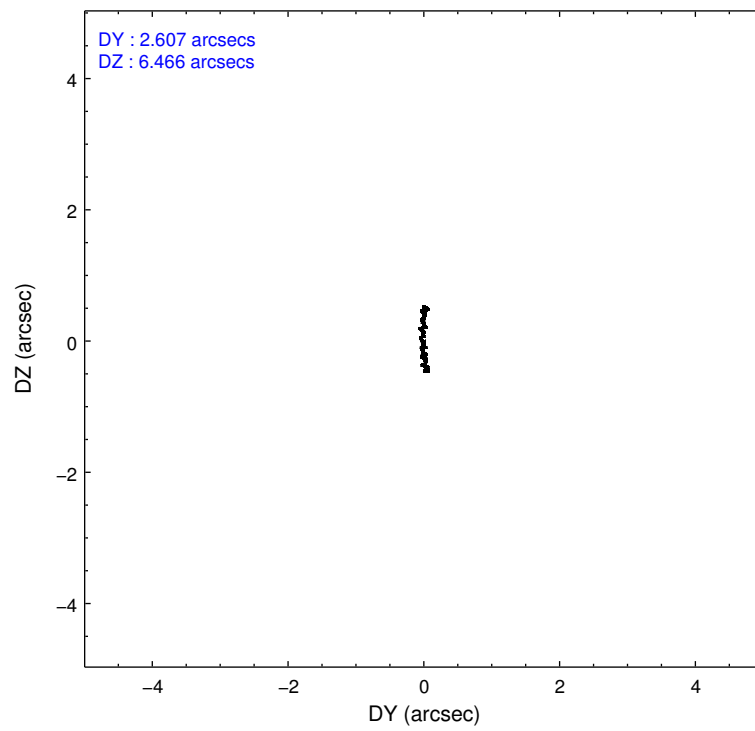
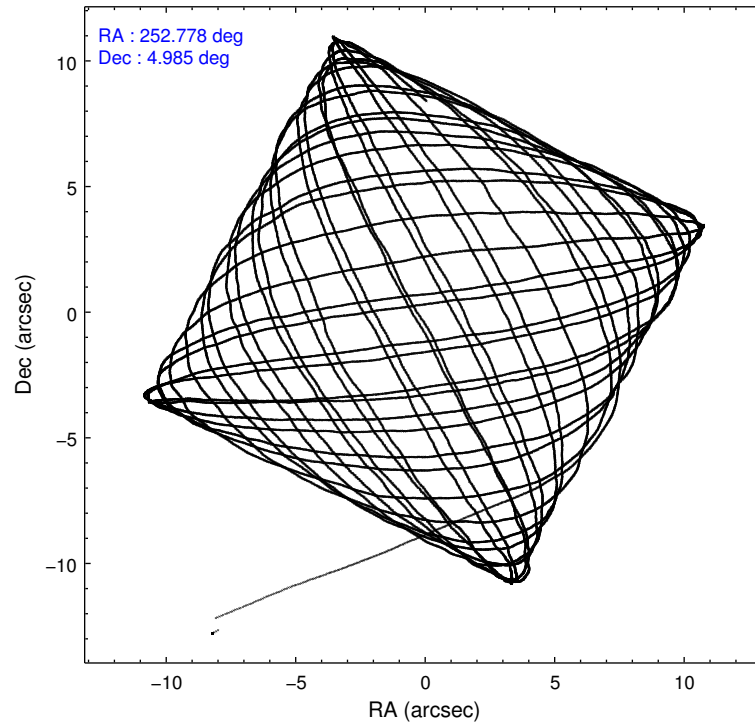
### 2.1.4 Events

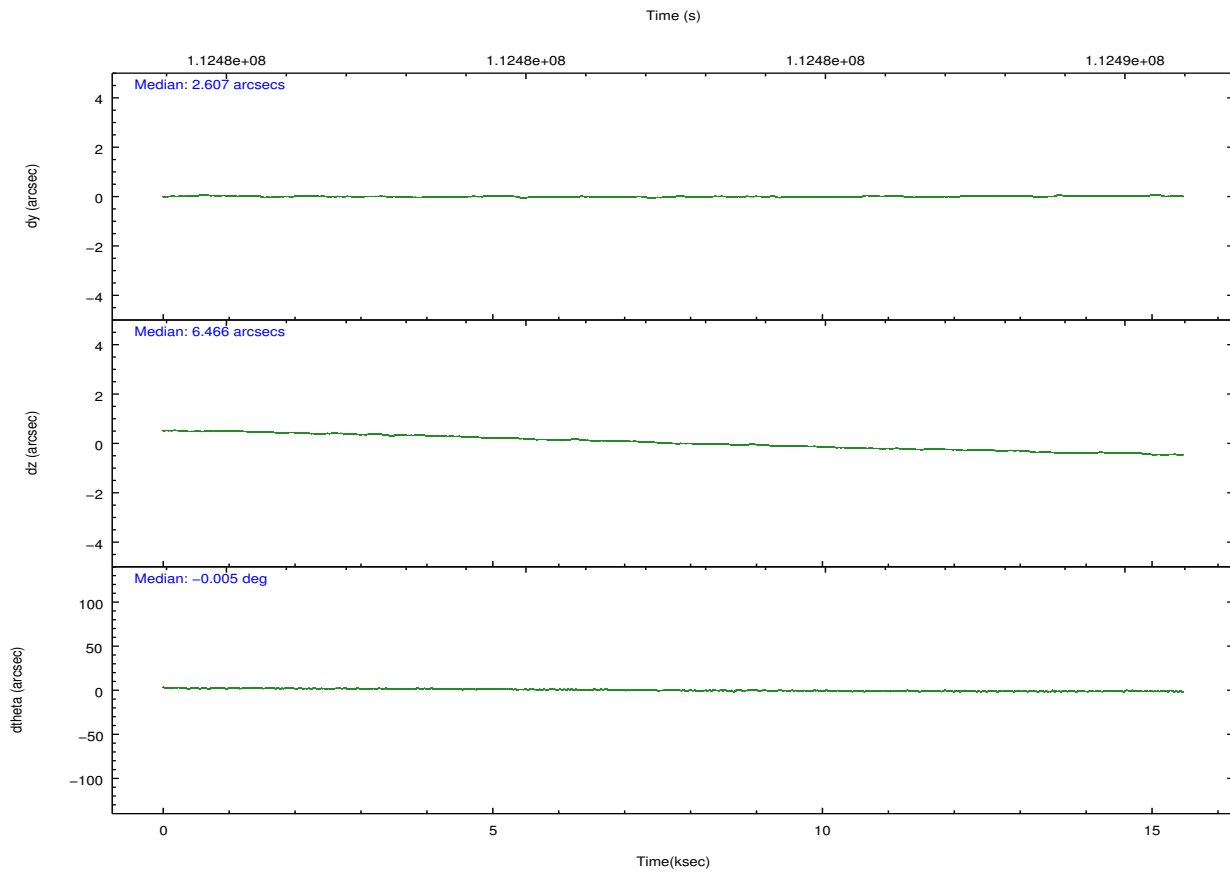
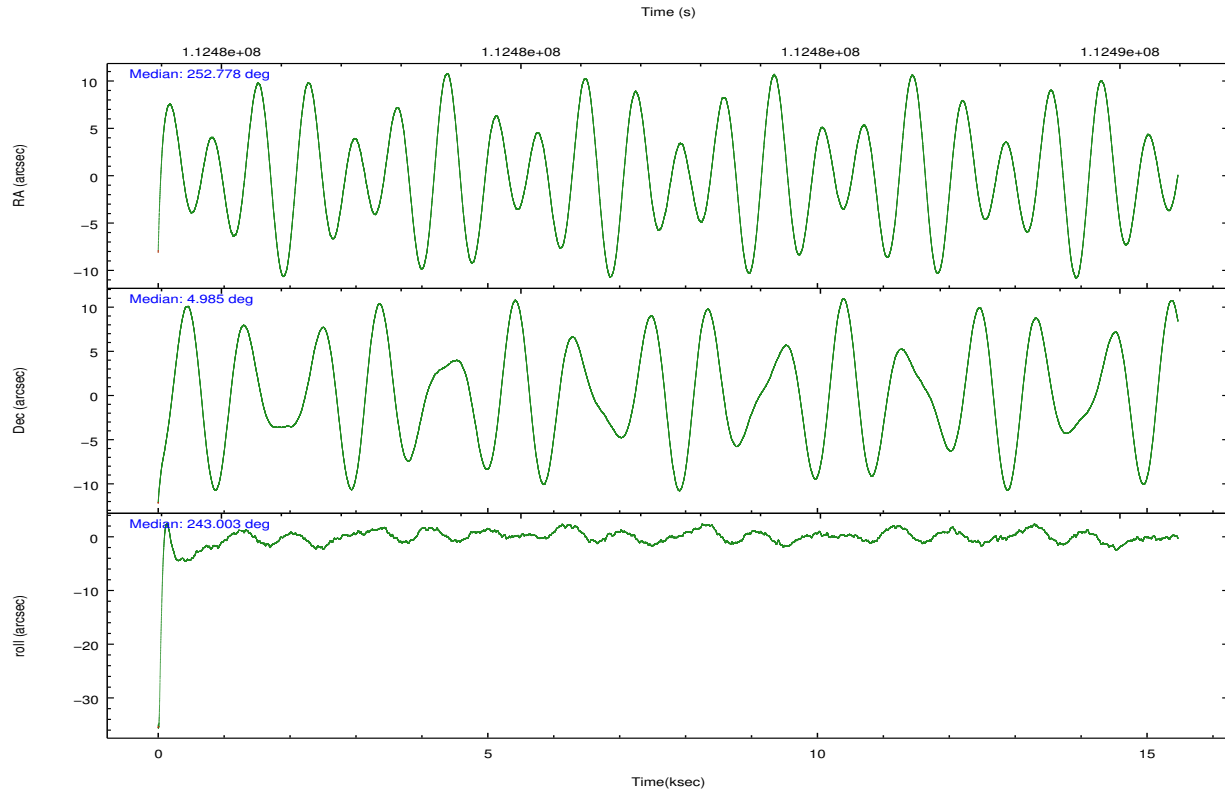
	ccd 2	ccd 3	ccd 5	ccd 6	ccd 7	ccd 8		ccd 2	ccd 3	ccd 5	ccd 6	ccd 7	ccd 8
level 1 events	103292	97183	147037	100024	144499	124134	grade 0 events	5301	5151	11280	5739	10532	8468
rejected events	91551	85751	77021	87459	74253	98614		5%	5%	7%	5%	7%	6%
rejected %	88%	88%	52%	87%	51%	79%	grade 1 events	49	37	170	44	123	61
								0%	0%	0%	0%	0%	0%
							grade 2 events	2424	2206	19339	2335	15035	5415
								2%	2%	13%	2%	10%	4%
							grade 3 events	1032	1065	3280	1141	6782	2600
								0%	1%	2%	1%	4%	2%
							grade 4 events	1071	1028	2793	1134	6799	2418
								1%	1%	1%	1%	4%	1%
							grade 5 events	3471	3715	11503	4261	12316	5223
								3%	3%	7%	4%	8%	4%
							grade 6 events	1915	1984	33339	2220	31117	6621
								1%	2%	22%	2%	21%	5%
							grade 7 events	88029	81997	65333	83150	61795	93328
								85%	84%	44%	83%	42%	75%

## 2.2 Compared Parameters

Parameter	Planned	Actual	Parameter	Planned	Actual
Instrument	ACIS	ACIS	Obspar format version number	7	7
Detector	ACIS-235678	ACIS-235678	Obspar file type	PREDICTED	ACTUAL
Grating	NONE	NONE	Obspar update status	NONE	UPDATED
Data mode	VFAINT	VFAINT	Number of optional ACIS chips dropped	0	0
Observation mode	POINTING	POINTING	On-chip summing requested	N	N
[deg] Pointing RA	252.776515	252.7782512919621	Subarray requested	NONE	NONE
[deg] Pointing Dec	5.012176	4.984965989054643	Alternating exposures requested	N	N
[deg] Pointing Roll	242.849620	243.0060659179097	[s] Primary exposure time	0.000000	3.2
[mm] SIM focus pos	-0.684267	-0.6828225247311905			
[mm] SIM defocus	0	0.001444936568705701			
[mm] SIM translation stage pos	-190.132523	-190.1400660498719			
[mm] SIM translation stage offset	0	0.00754346686406393			
[s] Observation start time (MET)	112474888.184000	112473926.36544			
Observation start date	2001-07-25T19:00:24	2001-07-25T18:45:26			
[s] Observation end time (MET)	112490188.184000	112490945.46611			
Observation end date	2001-07-25T23:15:24	2001-07-25T23:29:05			
Read mode	TIMED	TIMED			

## 2.3 Aspect



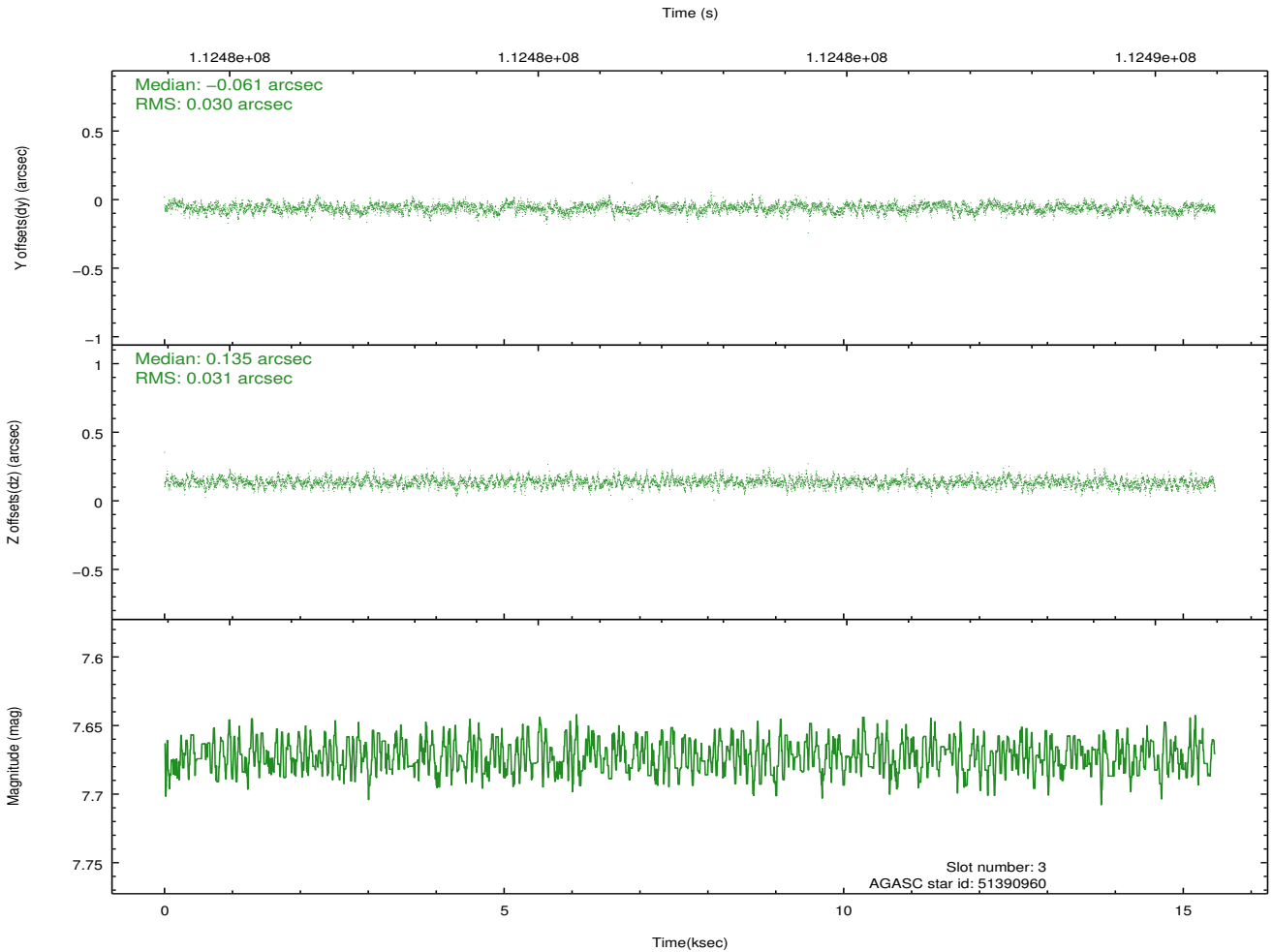
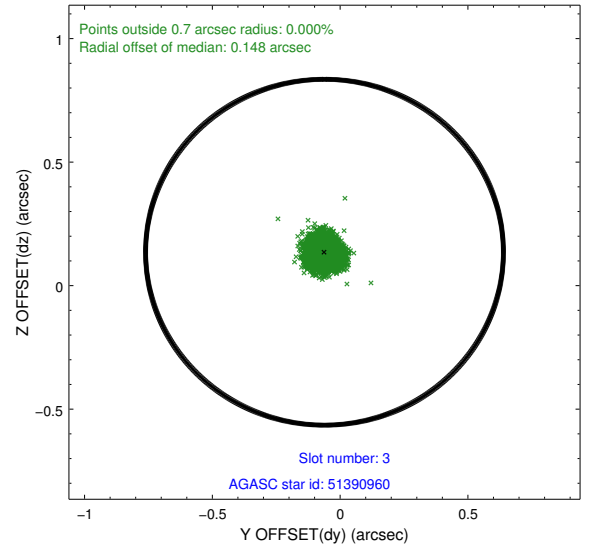
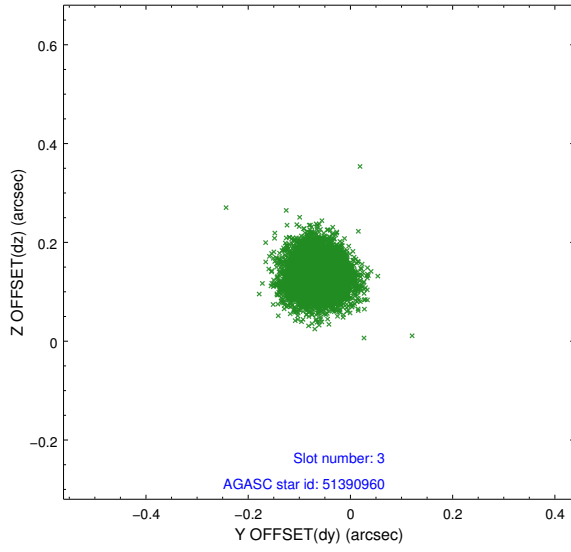


### Slot Statistics

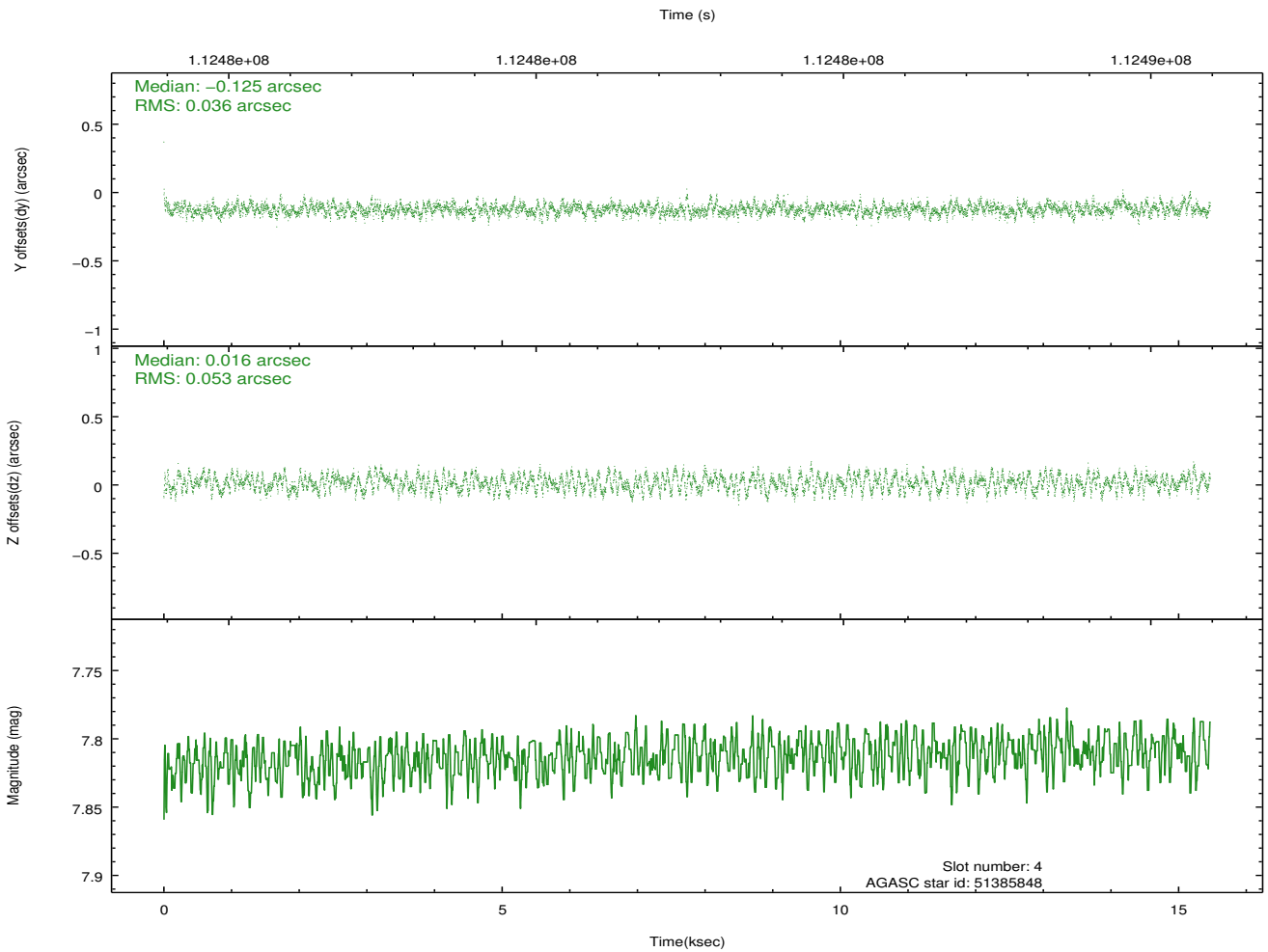
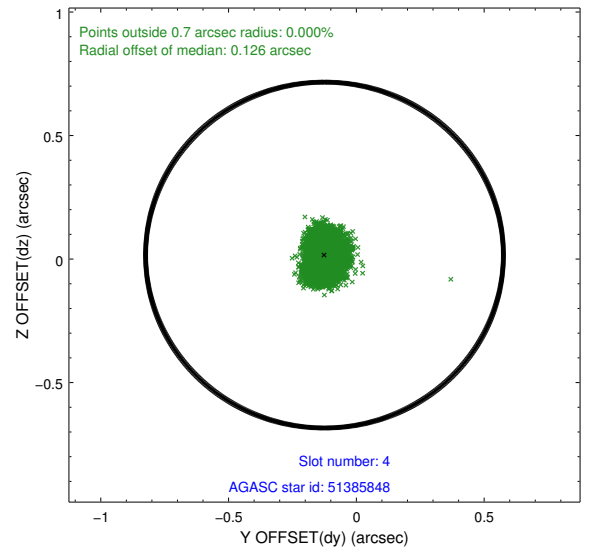
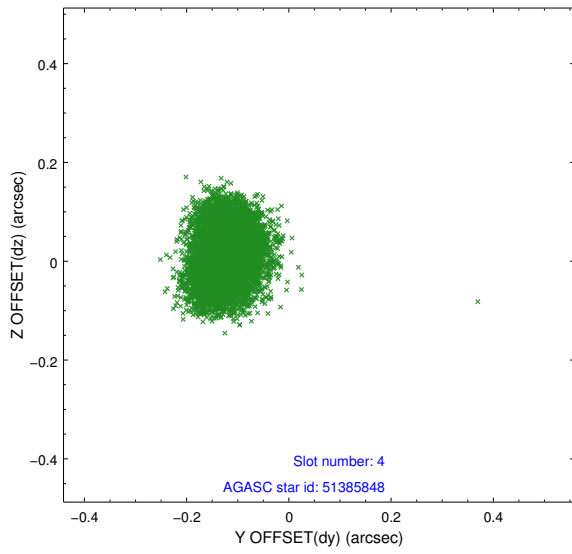
slot	status	id	mag	n_pts	med_dy	med_dz	dr1	dr2	ra	dec	mean_y	mean_z
0	FID	ACIS-S-2	7.11	3774	-0.025	0.000	0.010	0.016	0.000000	0.000000	-755.23	-1727.66
1	FID	ACIS-S-4	7.19	3774	-0.035	0.012	0.008	0.014	0.000000	0.000000	2157.87	180.58
2	FID	ACIS-S-5	7.24	3774	0.028	-0.003	0.009	0.017	0.000000	0.000000	-1807.68	174.50
3	GUIDE	51390960	7.67	7546	-0.061	0.135	0.046	0.075	253.089716	4.810839	131.84	1331.13
4	GUIDE	51385848	7.81	7547	-0.125	0.016	0.070	0.107	252.745605	5.488999	-1476.91	-881.18
5	GUIDE	51398584	8.23	7546	0.071	-0.009	0.047	0.076	252.688107	4.451511	1940.60	639.32
6	GUIDE	51388904	8.22	7546	0.069	-0.026	0.056	0.091	252.767239	4.783010	749.66	347.68
7	GUIDE	51389856	8.56	7546	0.047	-0.111	0.069	0.110	252.375344	5.365072	-474.44	-1858.87

## 2.4 Star Slots

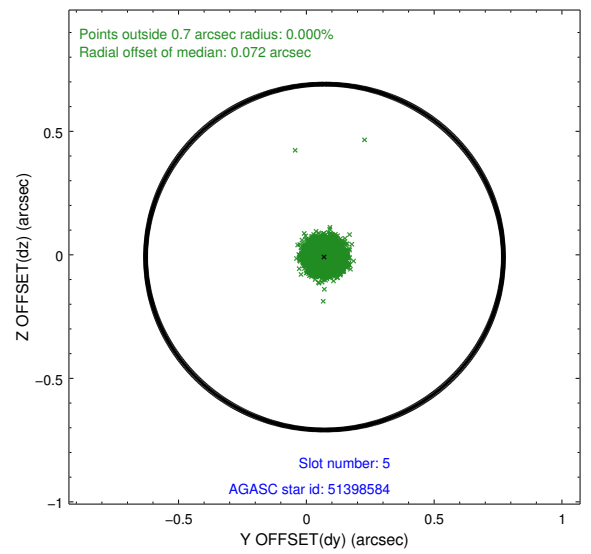
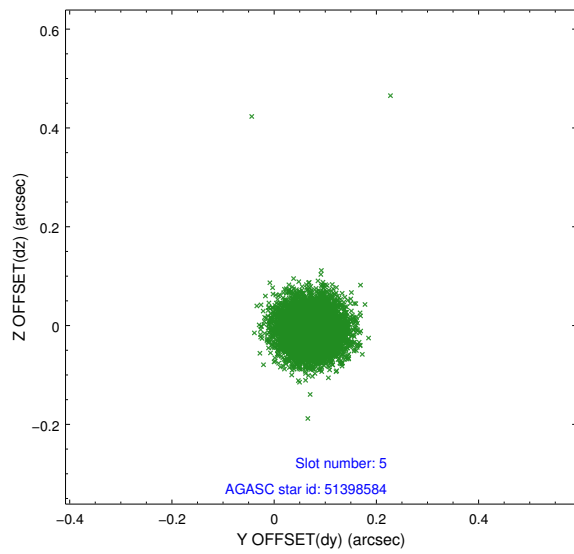
### 2.4.1 Slot 3



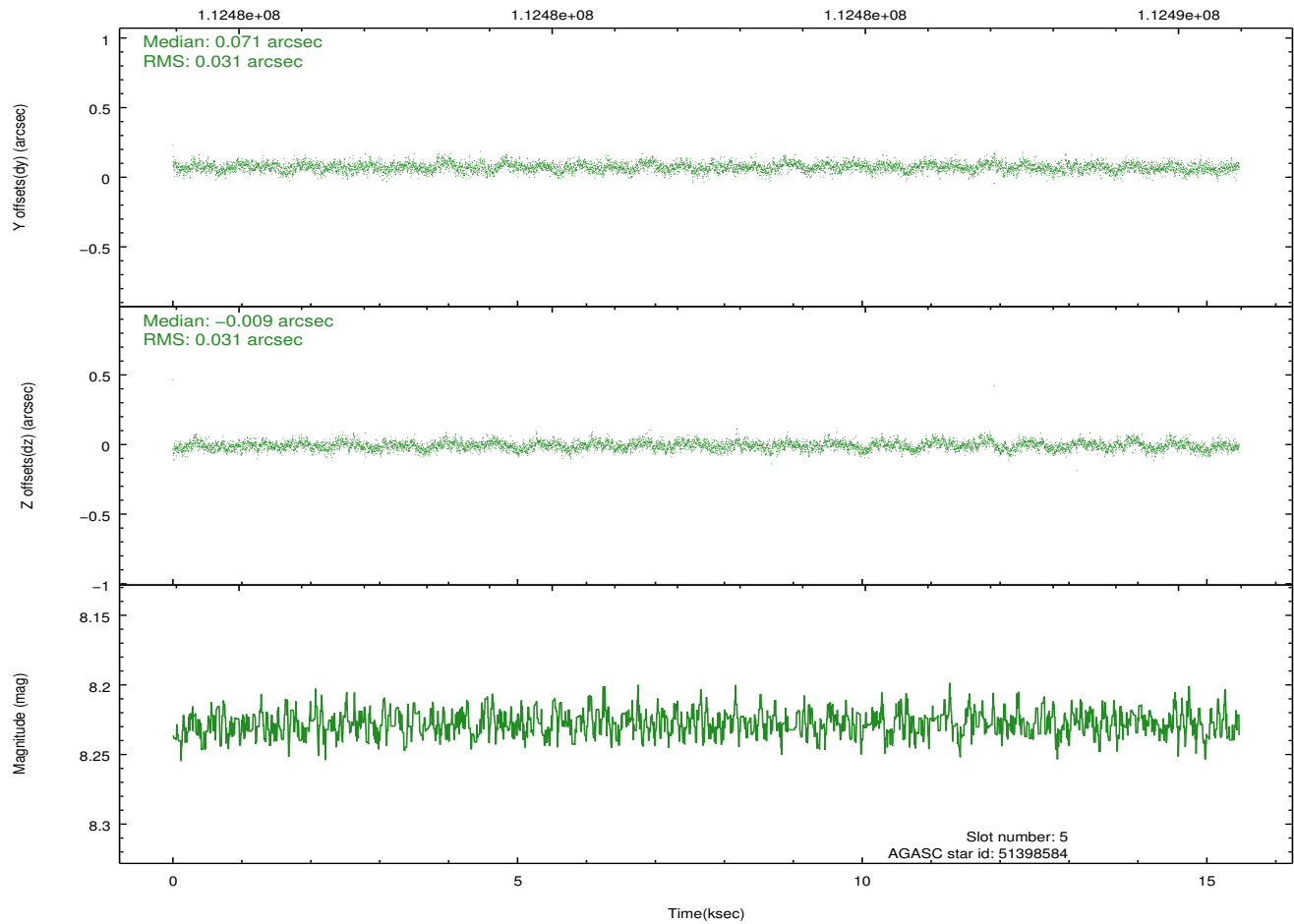
### 2.4.2 Slot 4



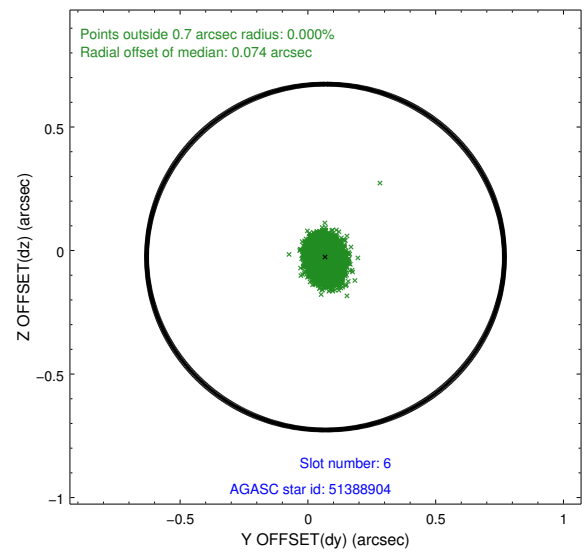
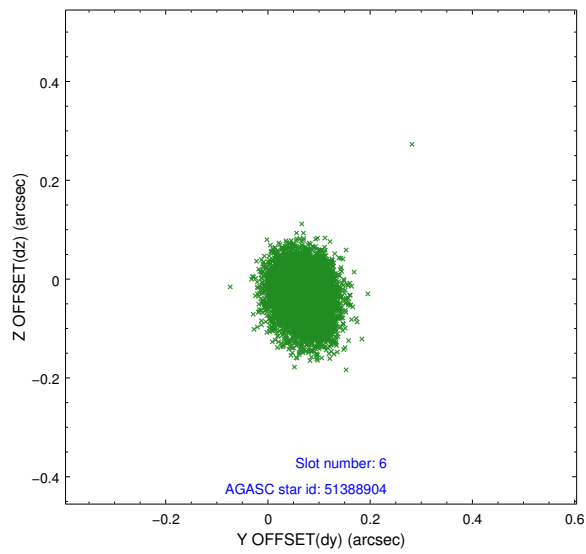
### 2.4.3 Slot 5



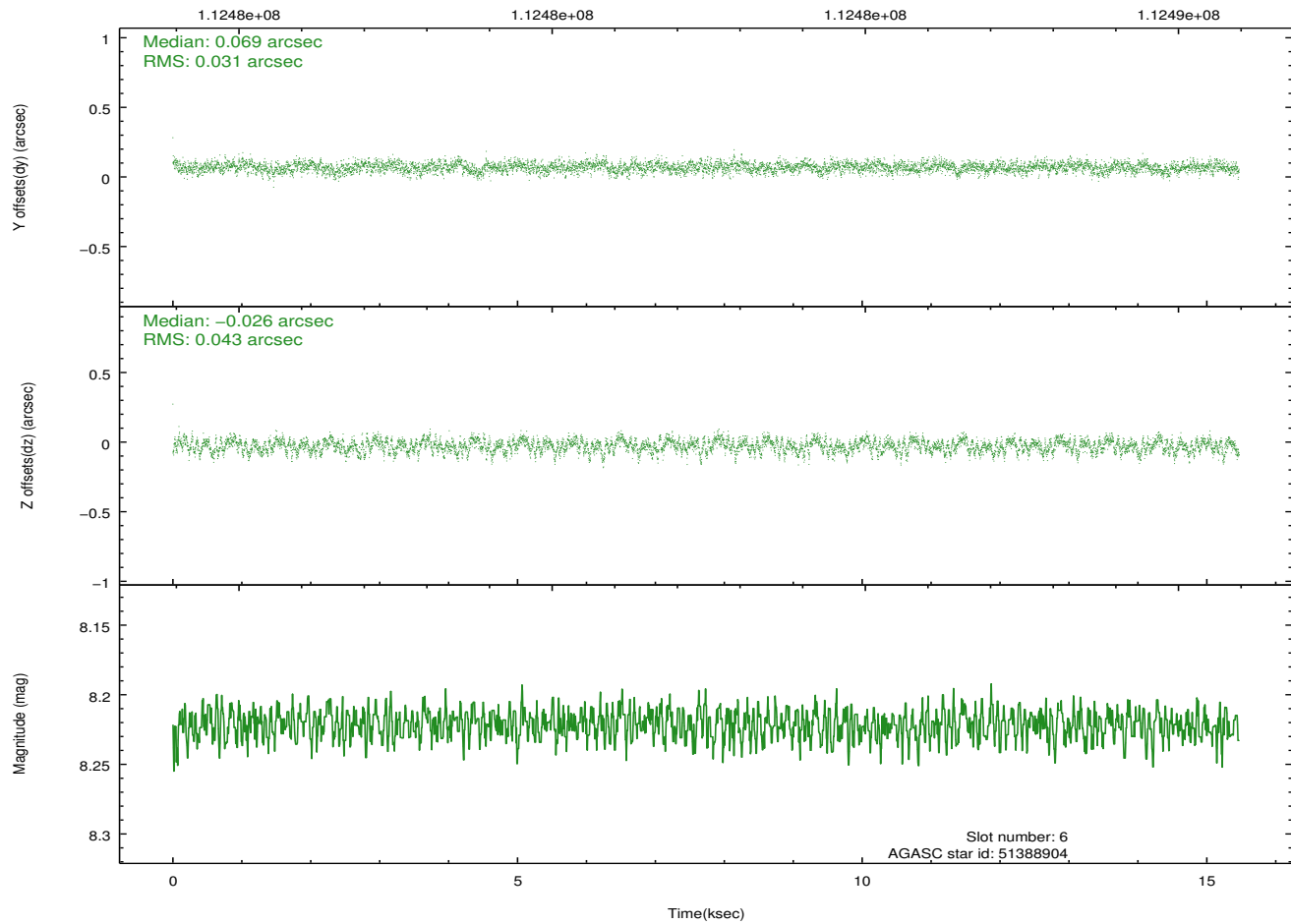
Time (s)



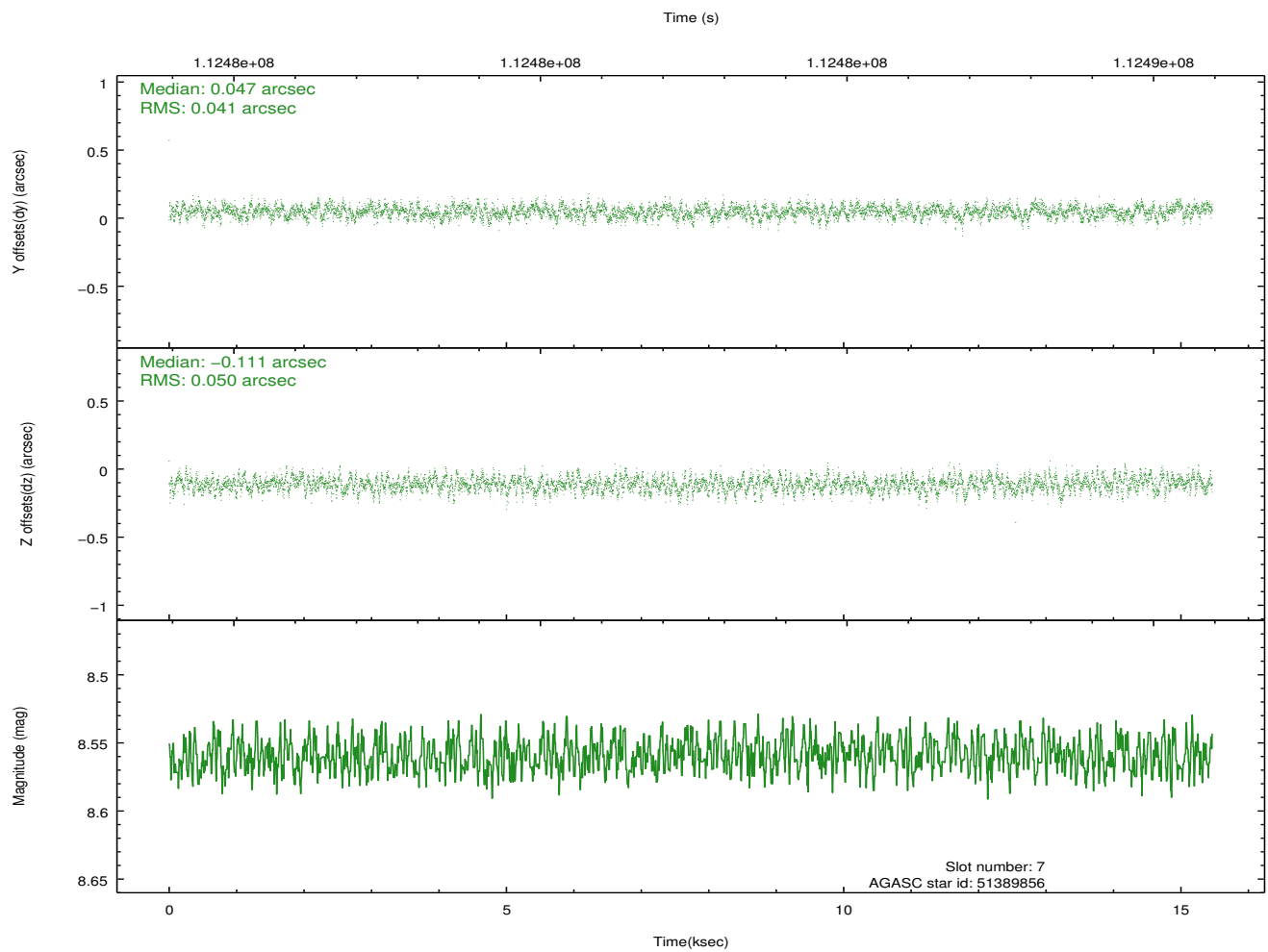
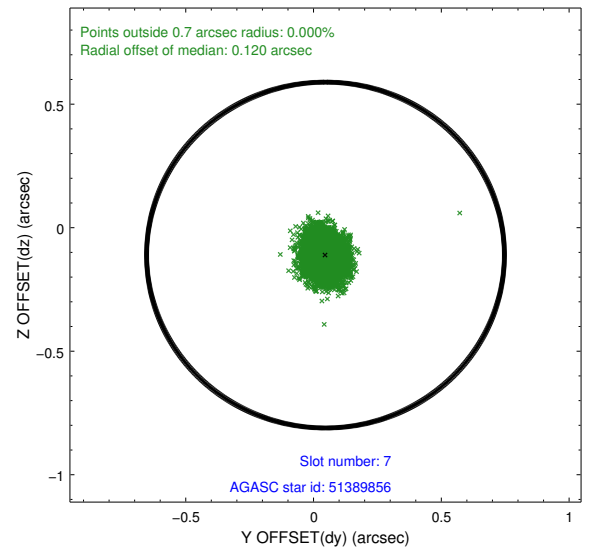
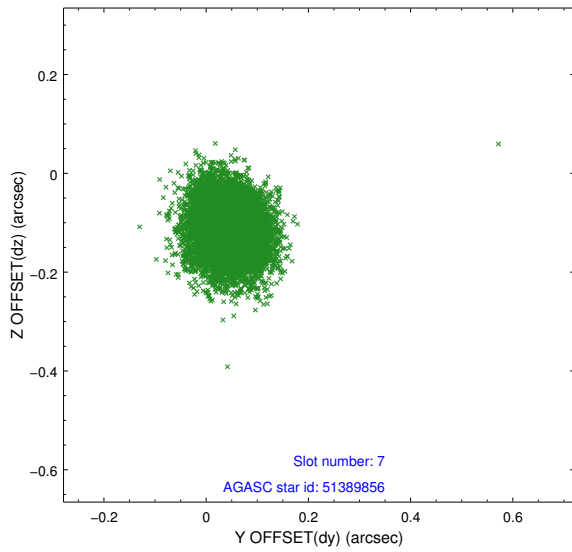
## 2.4.4 Slot 6



Time (s)

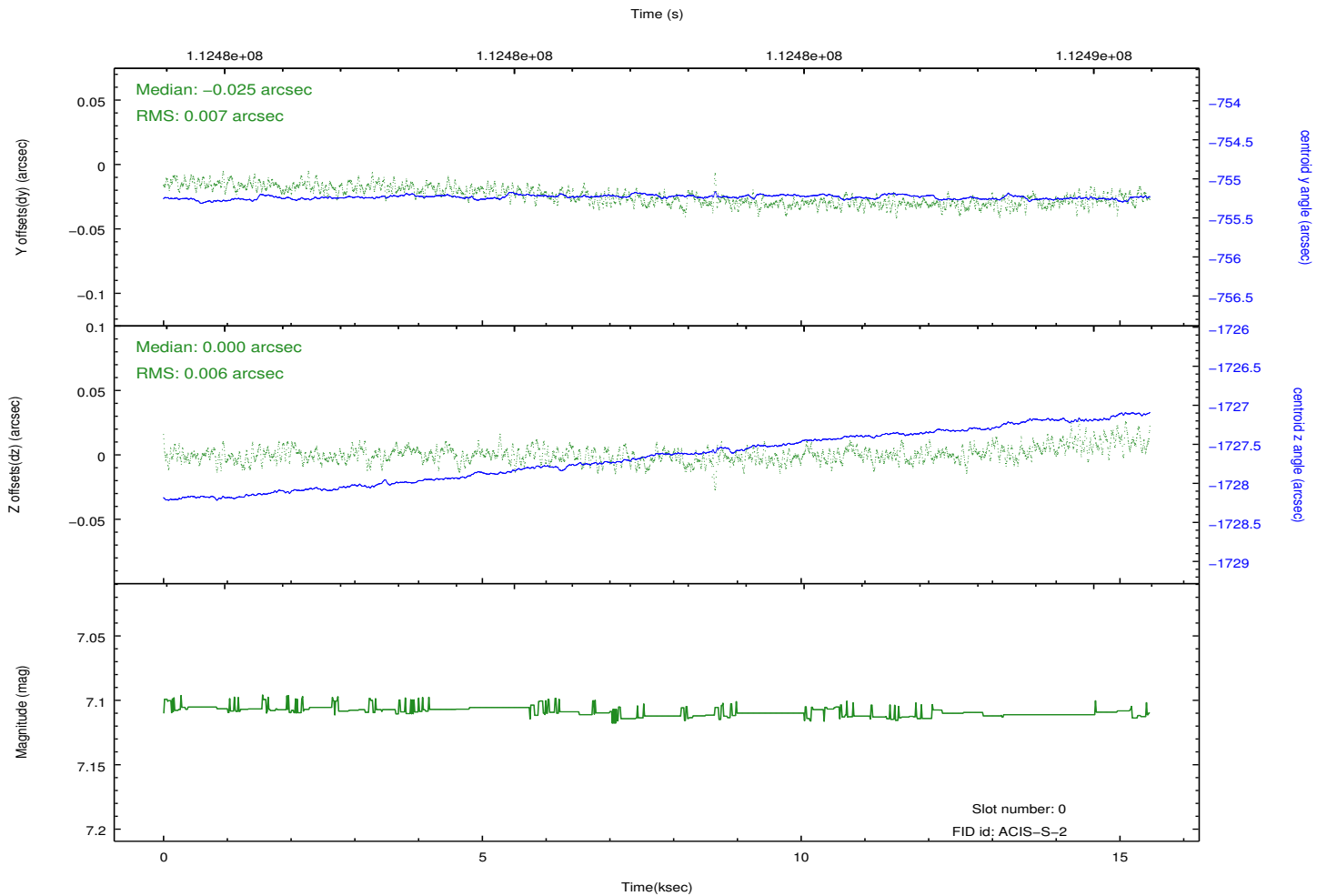
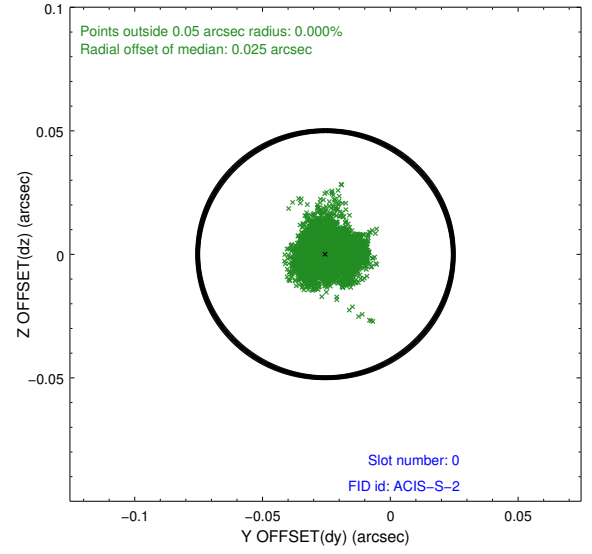
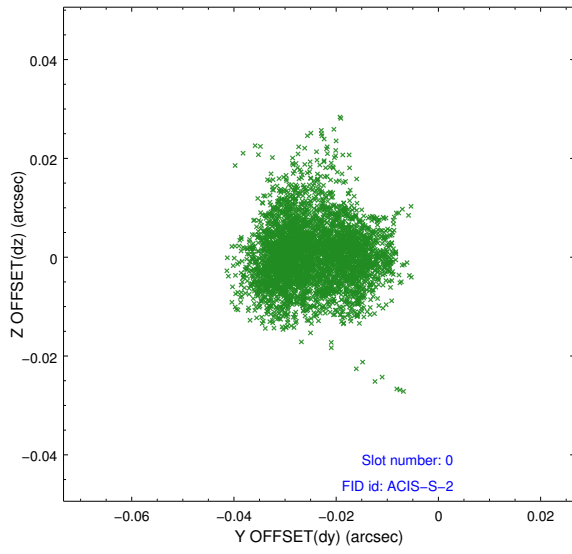


## 2.4.5 Slot 7

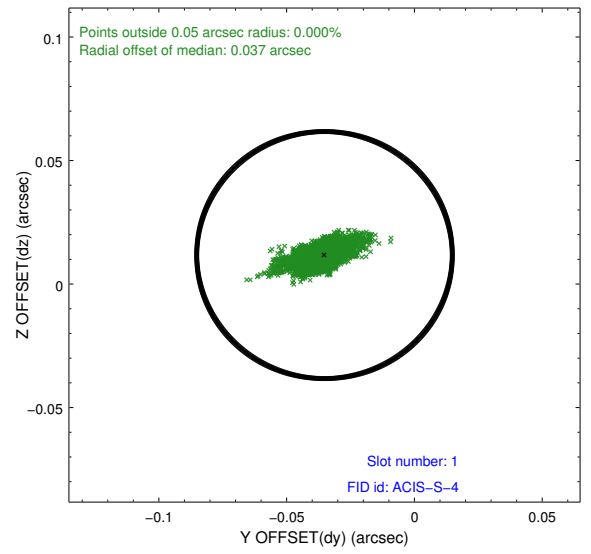
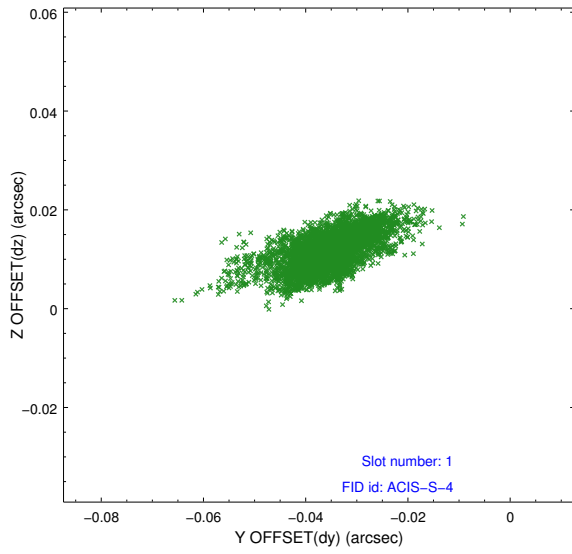


## 2.5 FID Slots

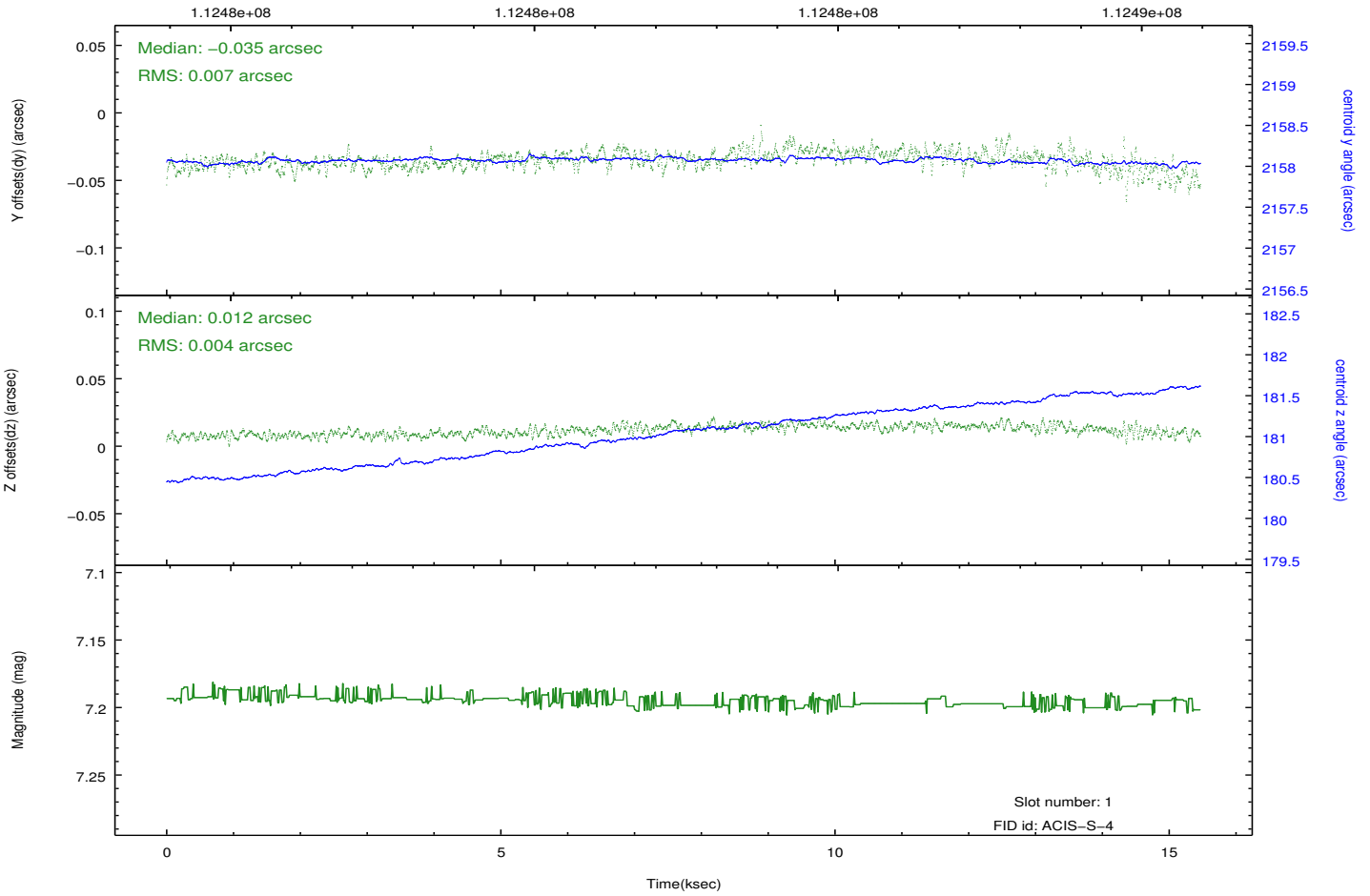
### 2.5.1 Slot 0



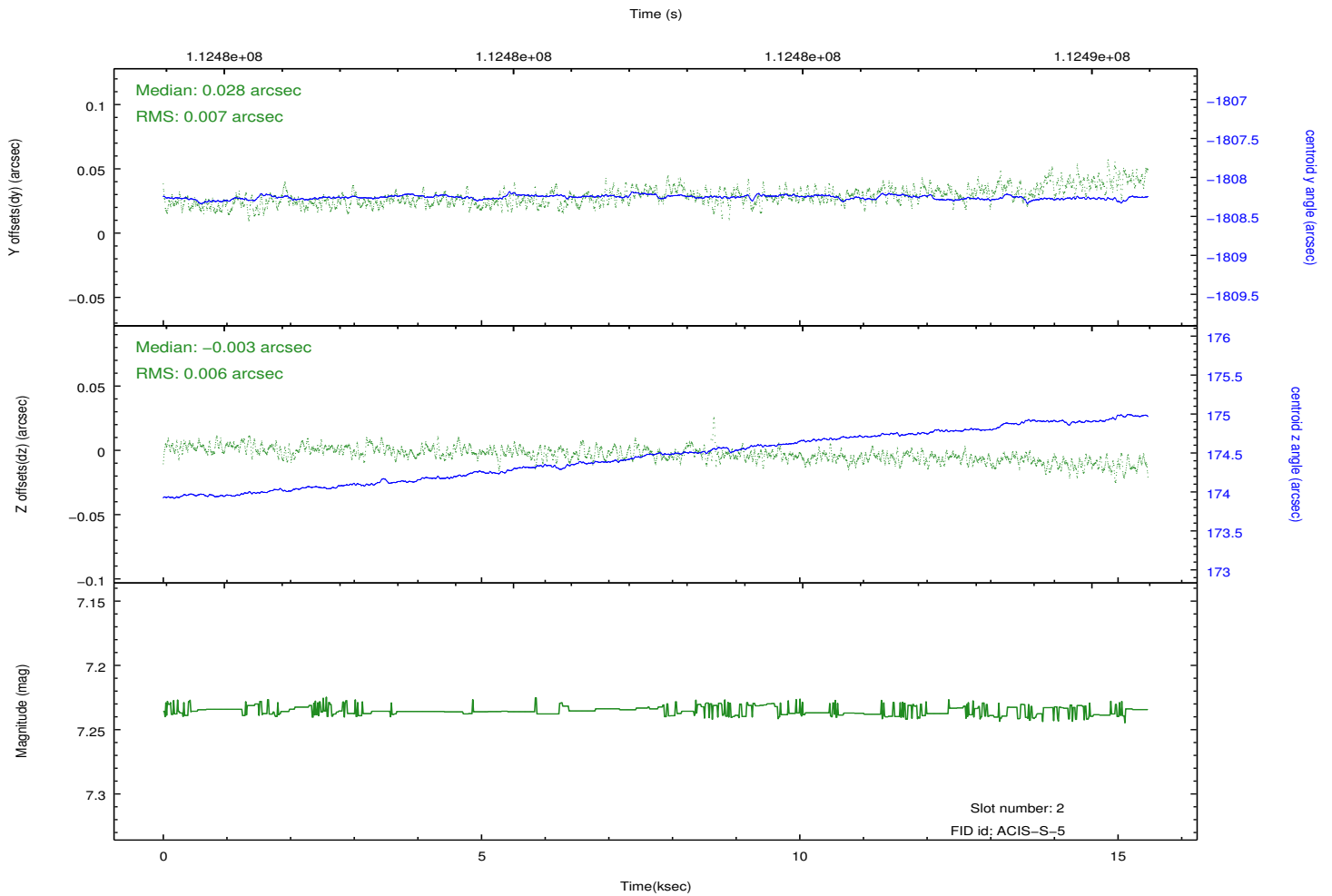
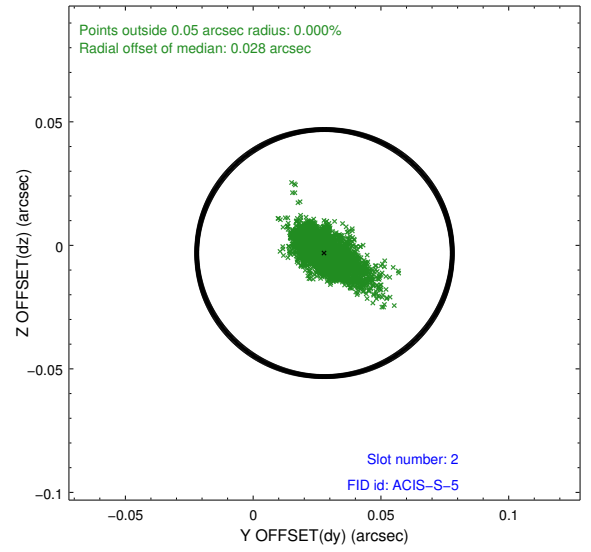
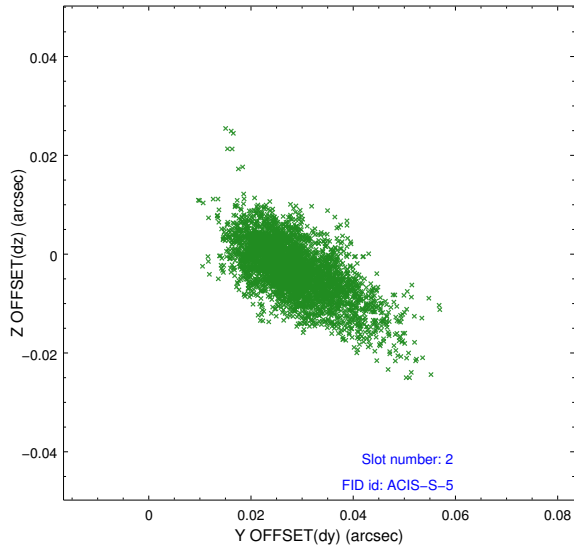
## 2.5.2 Slot 1



Time (s)



### 2.5.3 Slot 2



# A Summary

## A.1 Status

V&V Scientist	Jen Lauer
V&V Date (YYYY-MM-DD)	2012.09.24
V&V Edition	1
V&V Disposition and Status	OK
V&V Charge Time	15

## A.2 Comments