

V&V Reference Report

L2 ASCDS Version : 10.3.3

Observation 16535 - L2 Version 2
Chandra X-Ray Center

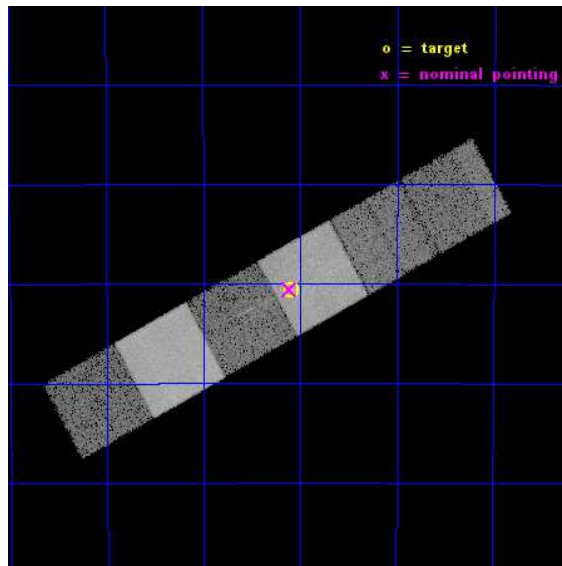
L2 Processing Date : Mar 11 2015

Contents

1	Front	2
2	OBI	3
2.1	OBI	3
2.1.1	Images	3
2.1.2	Bias	3
2.1.3	Parameters	4
2.1.4	Events	4
2.2	Compared Parameters	5
2.3	Aspect	6
2.4	Star Slots	9
2.4.1	Slot 3	9
2.4.2	Slot 4	10
2.4.3	Slot 5	11
2.4.4	Slot 6	12
2.4.5	Slot 7	13
2.5	FID Slots	14
2.5.1	Slot 0	14
2.5.2	Slot 1	15
2.5.3	Slot 2	16
3	Gratings	17
3.1	HEG Arm	17
3.2	MEG Arm	19
A	Summary	21
A.1	Status	21
A.2	Comments	21

1 Front

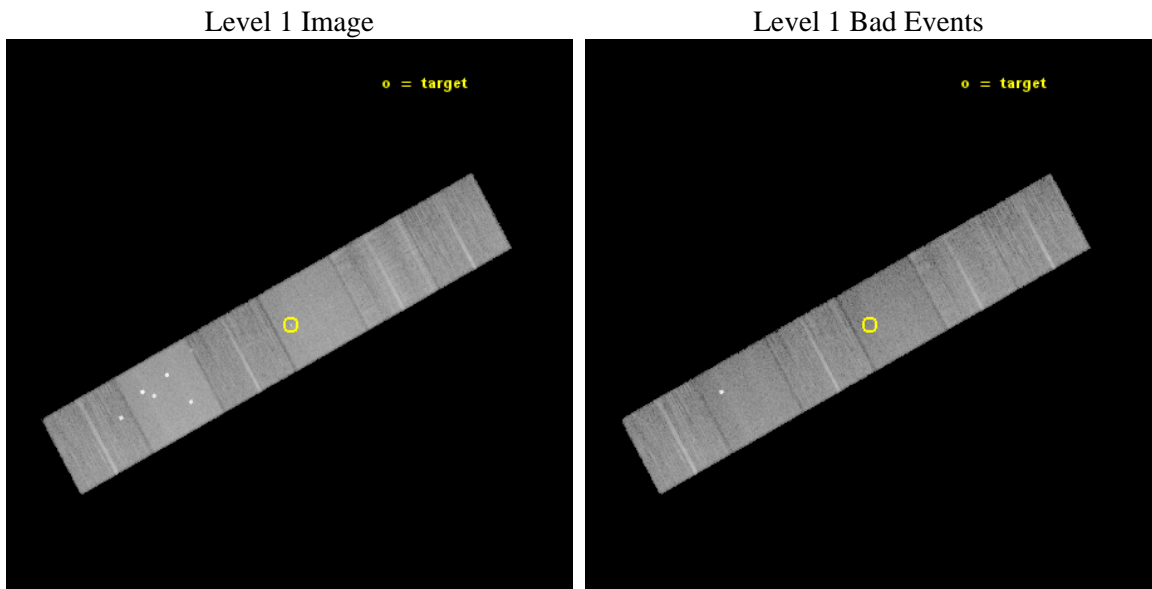
seq_num	200919	Sequence number
obs_id	16535	Observation id
title	Wind Properties in a Very Young Pup	Proposal title
observer	Dr. Norbert Schulz	Principal investigator
object	RCW38/IRS2	Source name
dtcycle	0	
cycle	P	events from which exps? Prim/Second/Both
ra_targ	134.773333	Observer's specified target RA [deg]
dec_targ	-47.511361	Observer's specified target Dec [deg]
ra_nom	134.77744026769	Nominal RA [deg]
dec_nom	-47.509944068337	Nominal Dec [deg]
roll_nom	331.15967066829	Nominal Roll [deg]
revision	2	Processing version of data
ontime	23928.937931299	Sum of GTIs [s]
livetime	23625.935310937	Livetime [s]
ontime4	23928.978971243	Sum of GTIs [s]
ontime5	23928.896891236	Sum of GTIs [s]
ontime6	23928.855851293	Sum of GTIs [s]
ontime7	23928.937931299	Sum of GTIs [s]
ontime8	23928.81481123	Sum of GTIs [s]
ontime9	23928.773771286	Sum of GTIs [s]
l2events	207216	Number of level 2 events



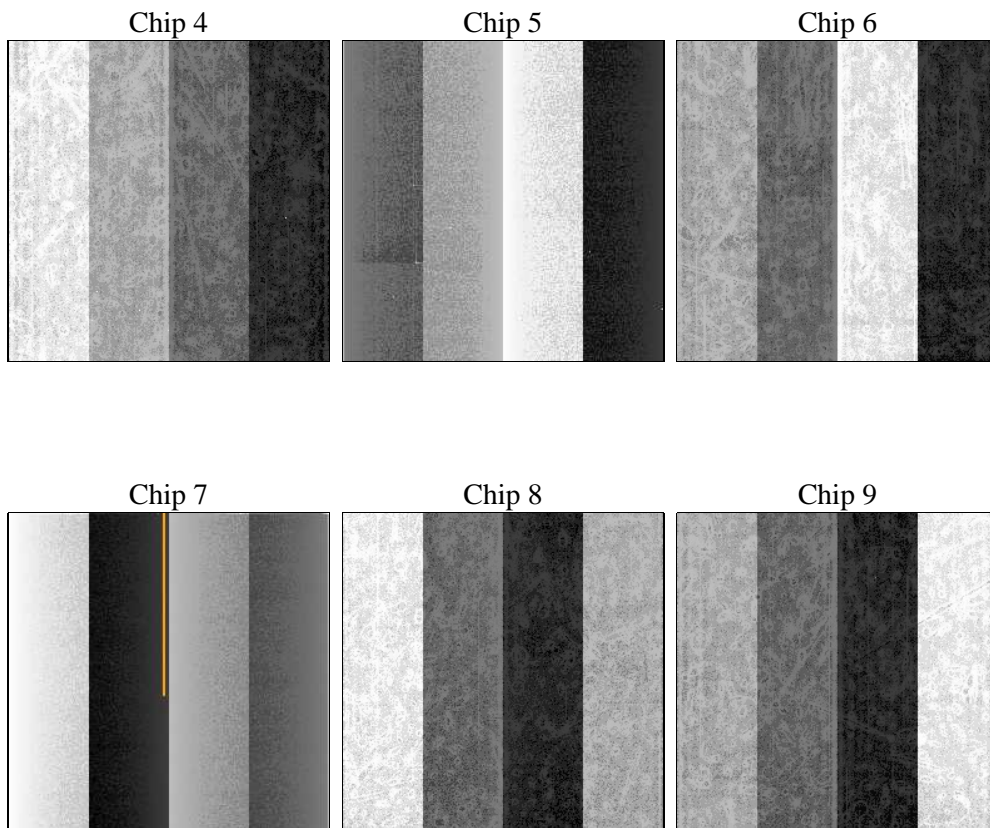
2 OBI

2.1 OBI

2.1.1 Images



2.1.2 Bias



2.1.3 Parameters

obi_num	2	Obi number	sched_exp_time	23972.000000	[s] Scheduled observation exposure time
ascdsver	10.3.3	Processing system revision	ontime	23928.937931299	Sum of GTIs [s]
caldbver	4.6.7	 	ontime4	23928.978971243	Sum of GTIs [s]
date	2015-03-07T19:38:23	Date and time of file creation	ontime5	23928.896891236	Sum of GTIs [s]
revision	1	Processing version of data	ontime6	23928.855851293	Sum of GTIs [s]
			ontime7	23928.937931299	Sum of GTIs [s]
			ontime8	23928.81481123	Sum of GTIs [s]
			ontime9	23928.773771286	Sum of GTIs [s]
			l1events	894645	Number of level 1 events
			tgmethod	TGDETECT	Method used to create src1a file
			zpc_pos	(4114.75, 4086.25)	src1a sky pixel position

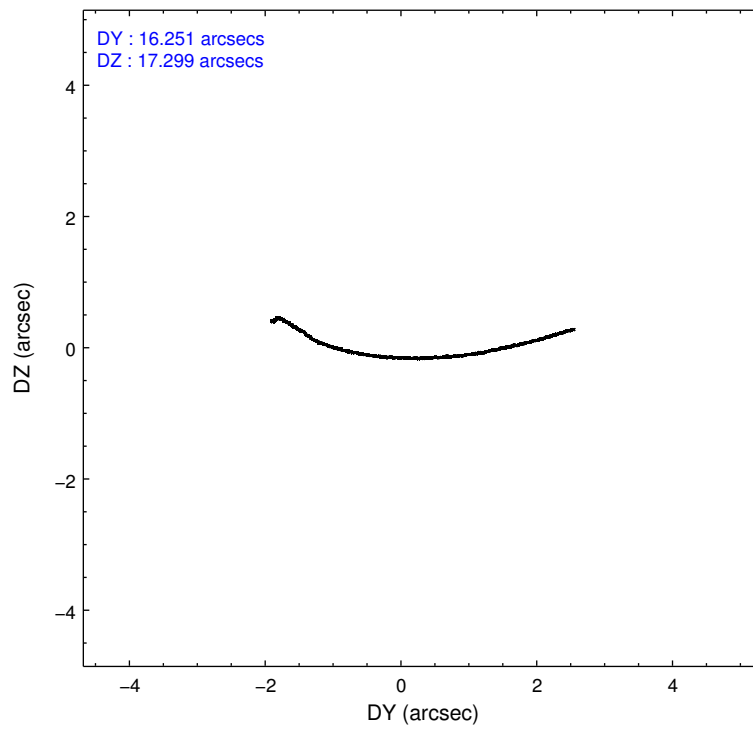
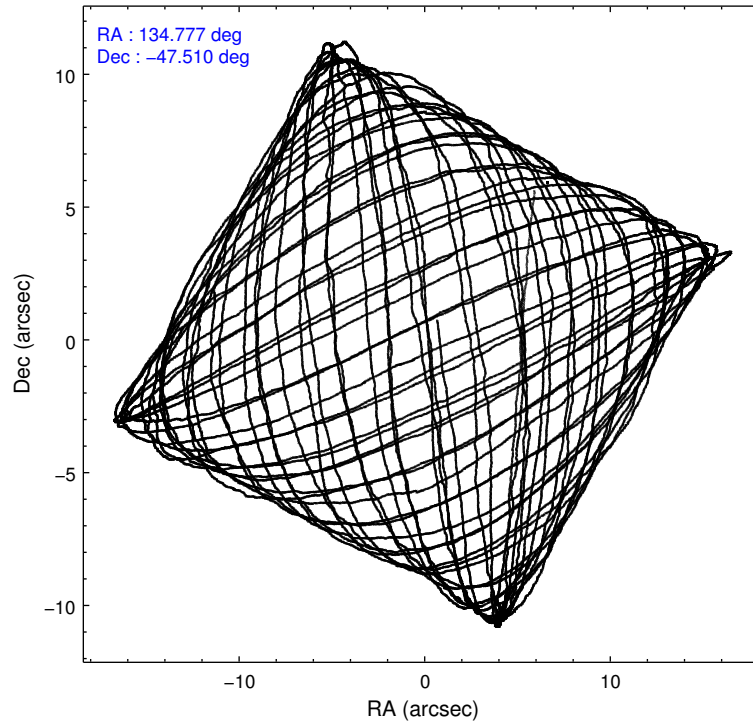
2.1.4 Events

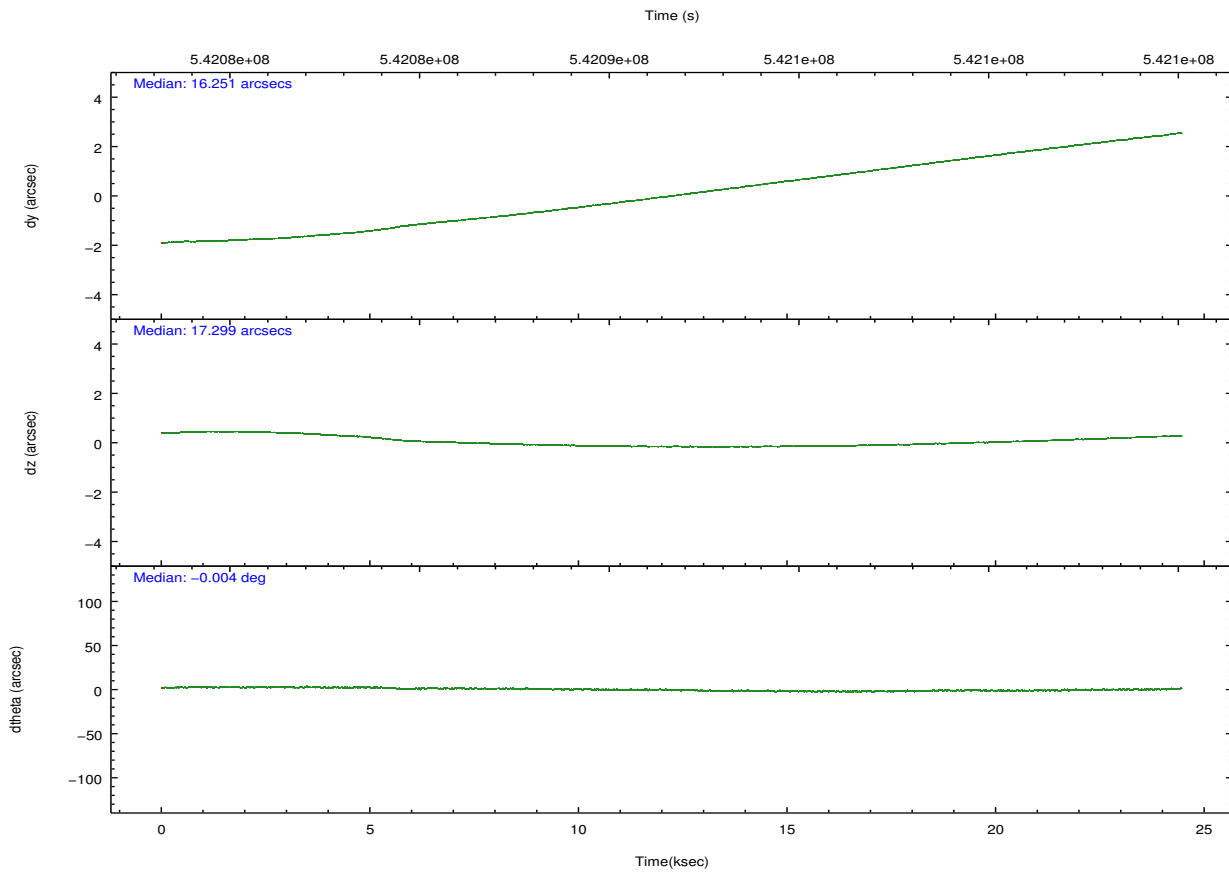
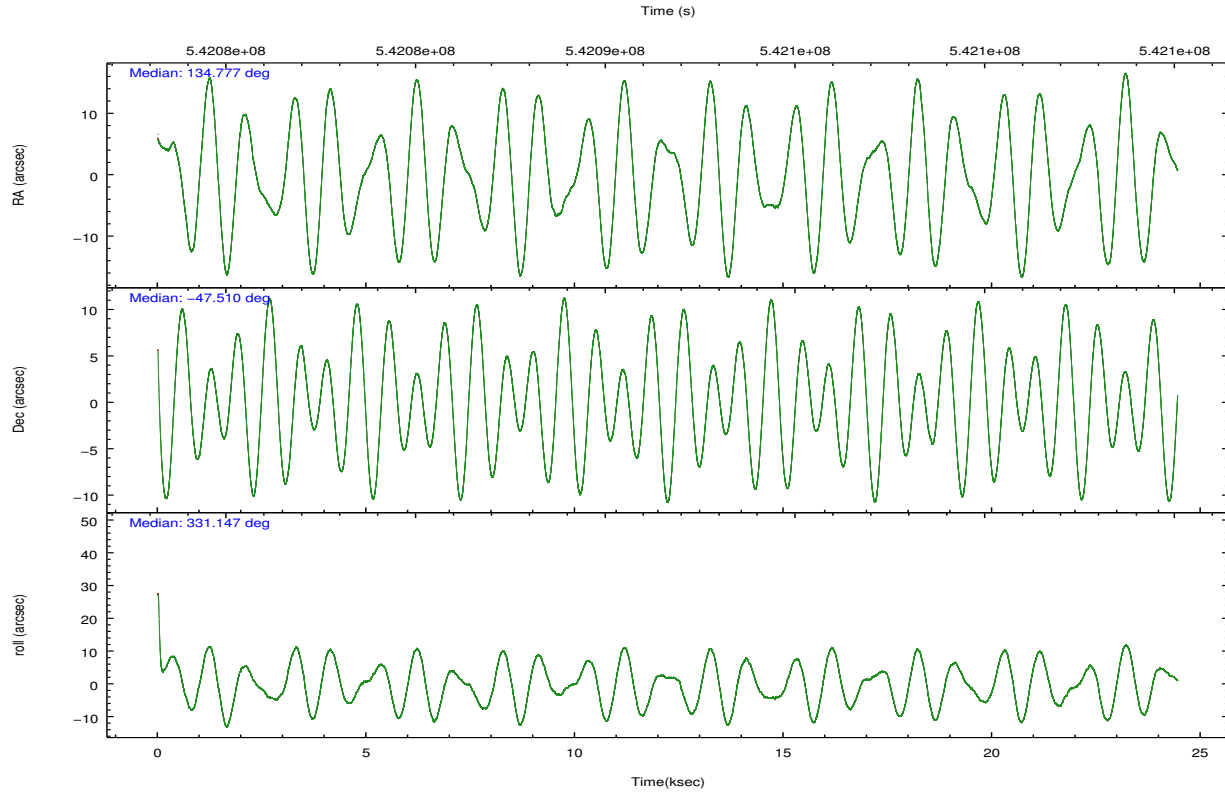
	ccd 4	ccd 5	ccd 6	ccd 7	ccd 8	ccd 9		ccd 4	ccd 5	ccd 6	ccd 7	ccd 8	ccd 9
level 1 events	134359	211966	116458	158769	155426	117667	grade 0 events	9304	21413	5245	6524	12433	5217
rejected events	115756	105141	101808	87493	113403	103072		6%	10%	4%	4%	7%	4%
rejected %	86%	49%	87%	55%	72%	87%	grade 1 events	145	392	61	195	123	61
								0%	0%	0%	0%	0%	0%
							grade 2 events	3631	29704	3236	15048	9926	3295
								2%	14%	2%	9%	6%	2%
							grade 3 events	1540	2977	1424	6048	4487	1526
								1%	1%	1%	3%	2%	1%
							grade 4 events	1482	2819	1394	5948	4227	1429
								1%	1%	1%	3%	2%	1%
							grade 5 events	6041	14172	6125	16092	8952	6527
								4%	6%	5%	10%	5%	5%
							grade 6 events	2650	49943	3354	37723	10955	3130
								1%	23%	2%	23%	7%	2%
							grade 7 events	109566	90546	95619	71191	104323	96482
								81%	42%	82%	44%	67%	81%

2.2 Compared Parameters

Parameter	Planned	Actual	Parameter	Planned	Actual
Instrument	ACIS	ACIS	Obspar format version number	7	7
Detector	ACIS-456789	ACIS-456789	Obspar file type	PREDICTED	ACTUAL
Grating	HETG	HETG	Obspar update status	NONE	UPDATED
Data mode	FAINT	FAINT	CCD I0 on	N	N
Observation mode	POINTING	POINTING	CCD I1 on	N	N
[deg] Pointing RA	134.736808	134.7774402676939	CCD I2 on	N	N
[deg] Pointing Dec	-47.510830	-47.50994406833689	CCD I3 on	N	N
[deg] Pointing Roll	330.973072	331.1596706682915	CCD S0 on	O1	Y
[mm] SIM focus pos	-0.684267	-0.6828225247311905	CCD S1 on	Y	Y
[mm] SIM defocus	0	0.001444936568705701	CCD S2 on	Y	Y
[mm] SIM translation stage pos	-190.132523	-190.1425803651734	CCD S3 on	Y	Y
[mm] SIM translation stage offset	0	0.01005778216563158	CCD S4 on	Y	Y
[s] Observation start time (MET)	542079913.184000	542078660.1534801	CCD S5 on	O2	Y
Observation start date	2015-03-07T01:44:06	2015-03-07T01:24:20	Number of optional ACIS chips dropped	0	0
[s] Observation end time (MET)	542103885.184000	542105157.94247	On-chip summing requested	N	N
Observation end date	2015-03-07T08:23:38	2015-03-07T08:45:57	Subarray requested	NONE	NONE
Read mode	TIMED	TIMED	Alternating exposures requested	N	N
			[s] Primary exposure time	0.000000	3.2

2.3 Aspect





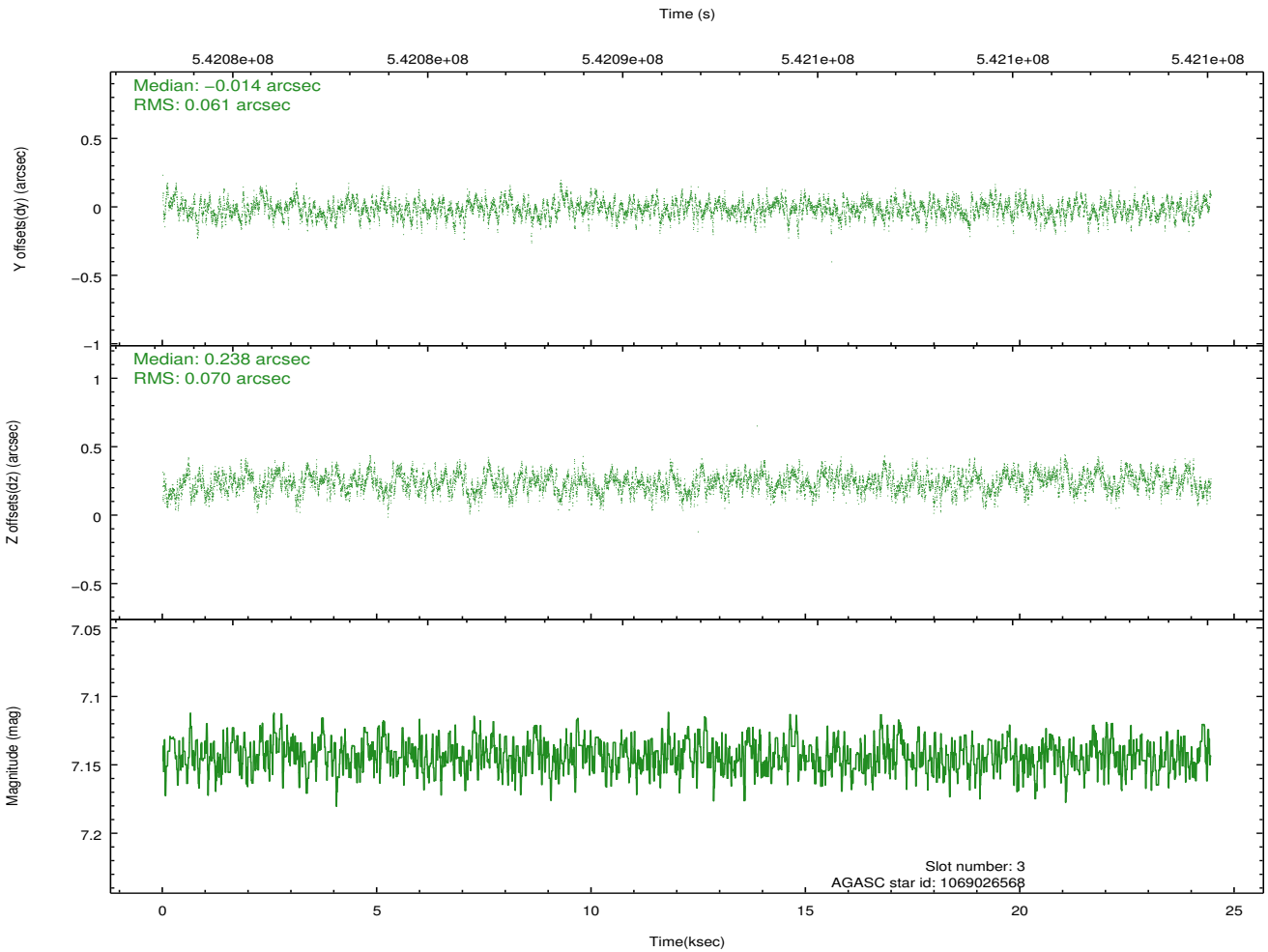
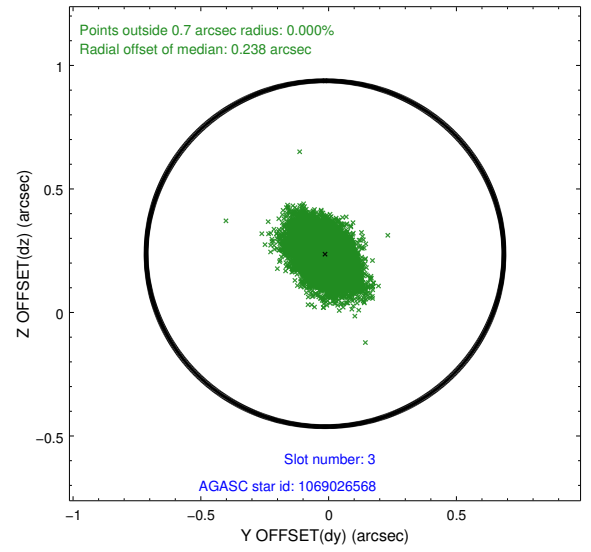
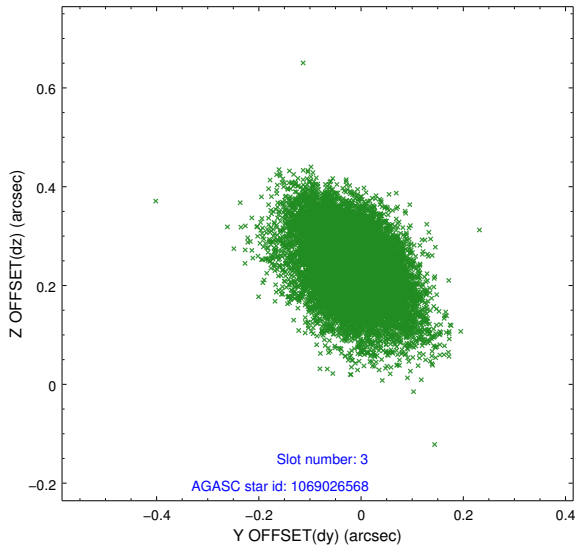
Slot Statistics

slot	status	used	id	mag	n_pts	med_dy	med_dz	dr1	dr2	ra	dec	mean_y	mean_z
0	FID		ACIS-S-2	7.12	5963	-0.094	-0.085	0.015	0.027	0.000000	0.000000	-769.46	-1738.83
1	FID		ACIS-S-4	7.21	5962	0.332	0.069	0.019	0.033	0.000000	0.000000	2144.20	169.65
2	FID		ACIS-S-5	7.23	5963	-0.269	0.024	0.022	0.038	0.000000	0.000000	-1822.29	163.46
3	GUIDE	used	1069026568	7.14	11925	-0.014	0.238	0.098	0.162	134.843519	-48.291320	1588.01	-2332.47
4	GUIDE	used	1070728224	9.36	11844	0.101	-0.095	0.154	0.242	135.106055	-47.256225	345.17	1237.40
5	GUIDE	used	1070729248	8.71	11920	0.301	-0.010	0.112	0.202	135.048995	-47.118313	-16.31	1605.69
6	GUIDE	used	1070729592	7.34	11926	-0.374	-0.045	0.072	0.117	135.107946	-47.337671	489.91	982.80
7	GUIDE	used	1070731648	8.03	11922	-0.001	-0.088	0.090	0.143	135.285038	-47.251382	719.64	1463.02

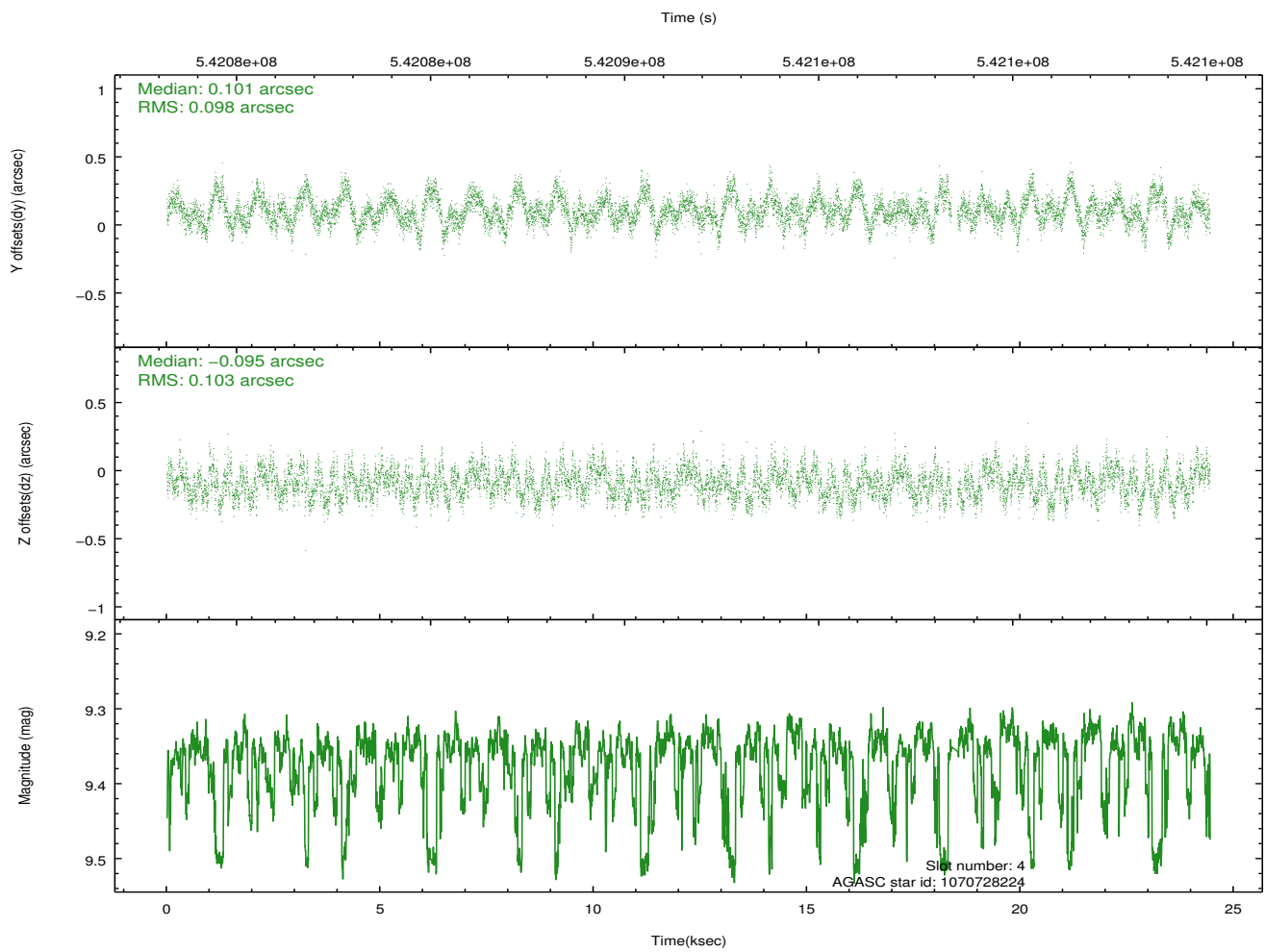
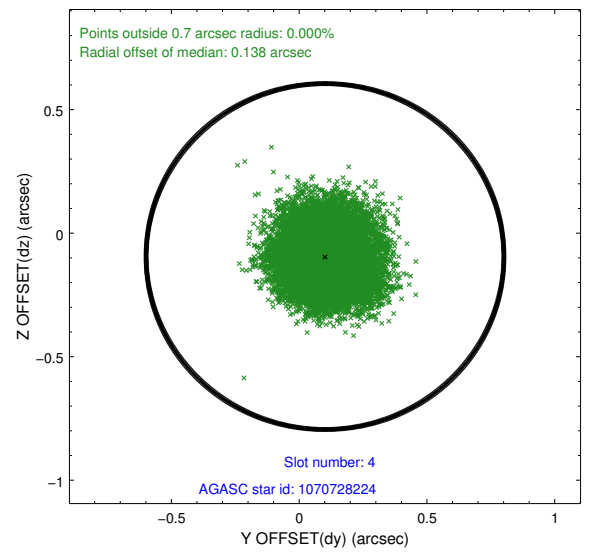
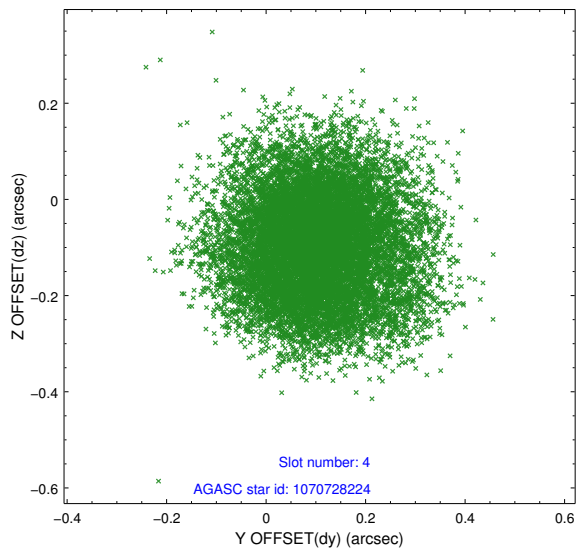
∞

2.4 Star Slots

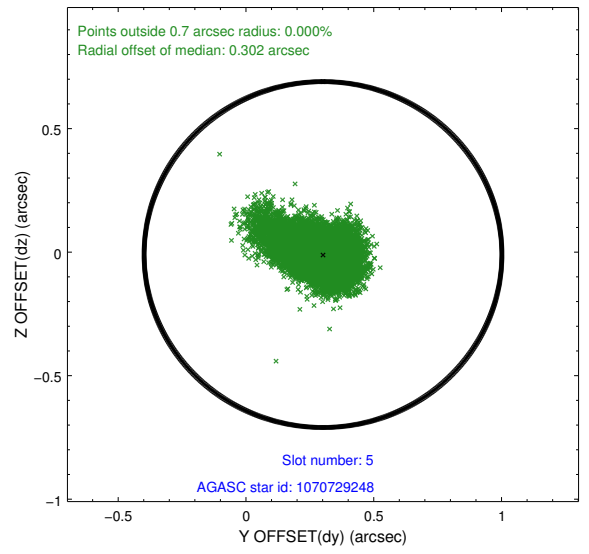
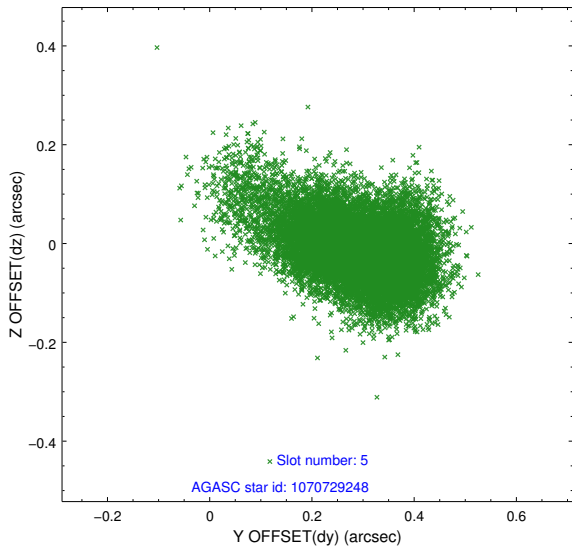
2.4.1 Slot 3



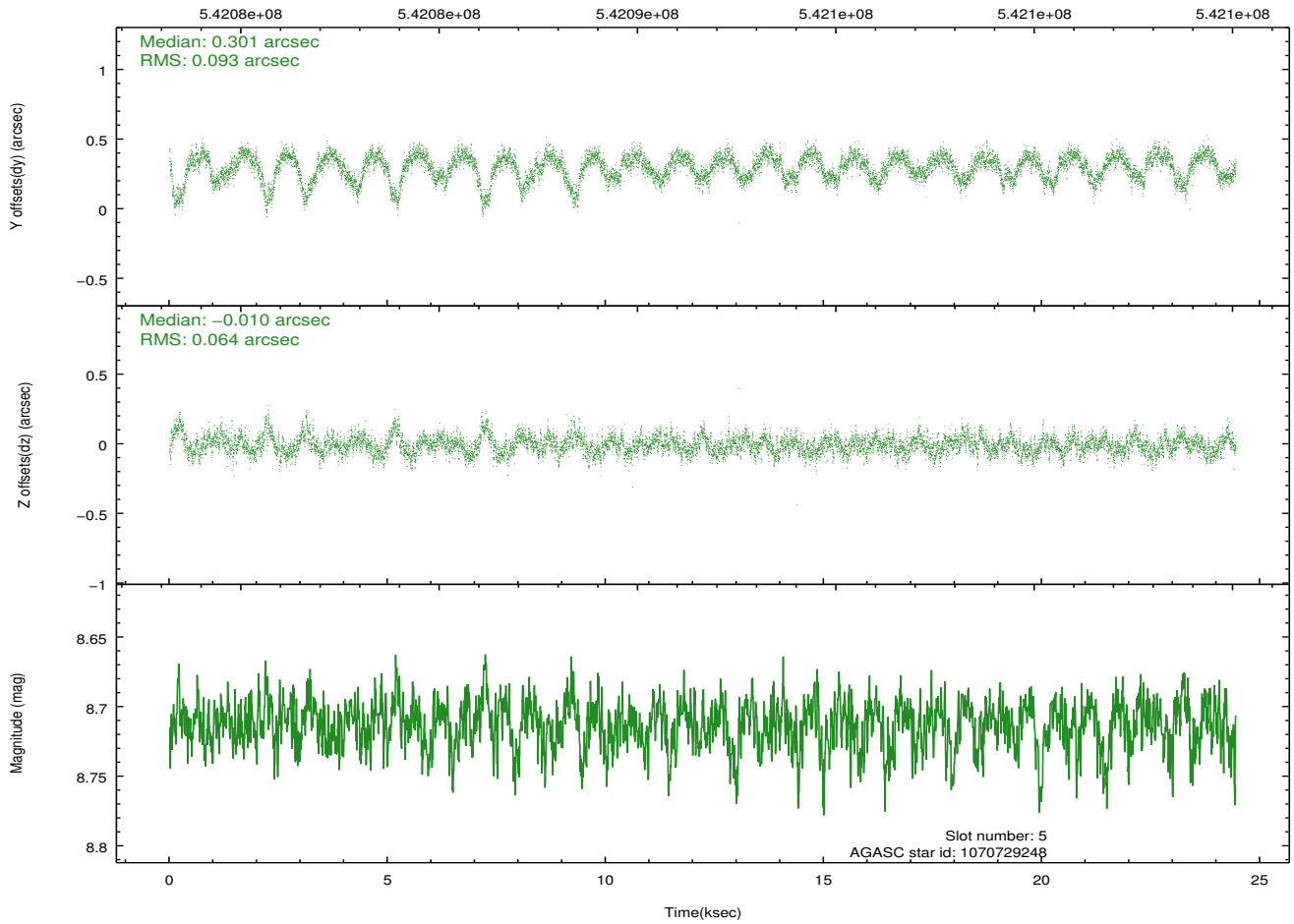
2.4.2 Slot 4



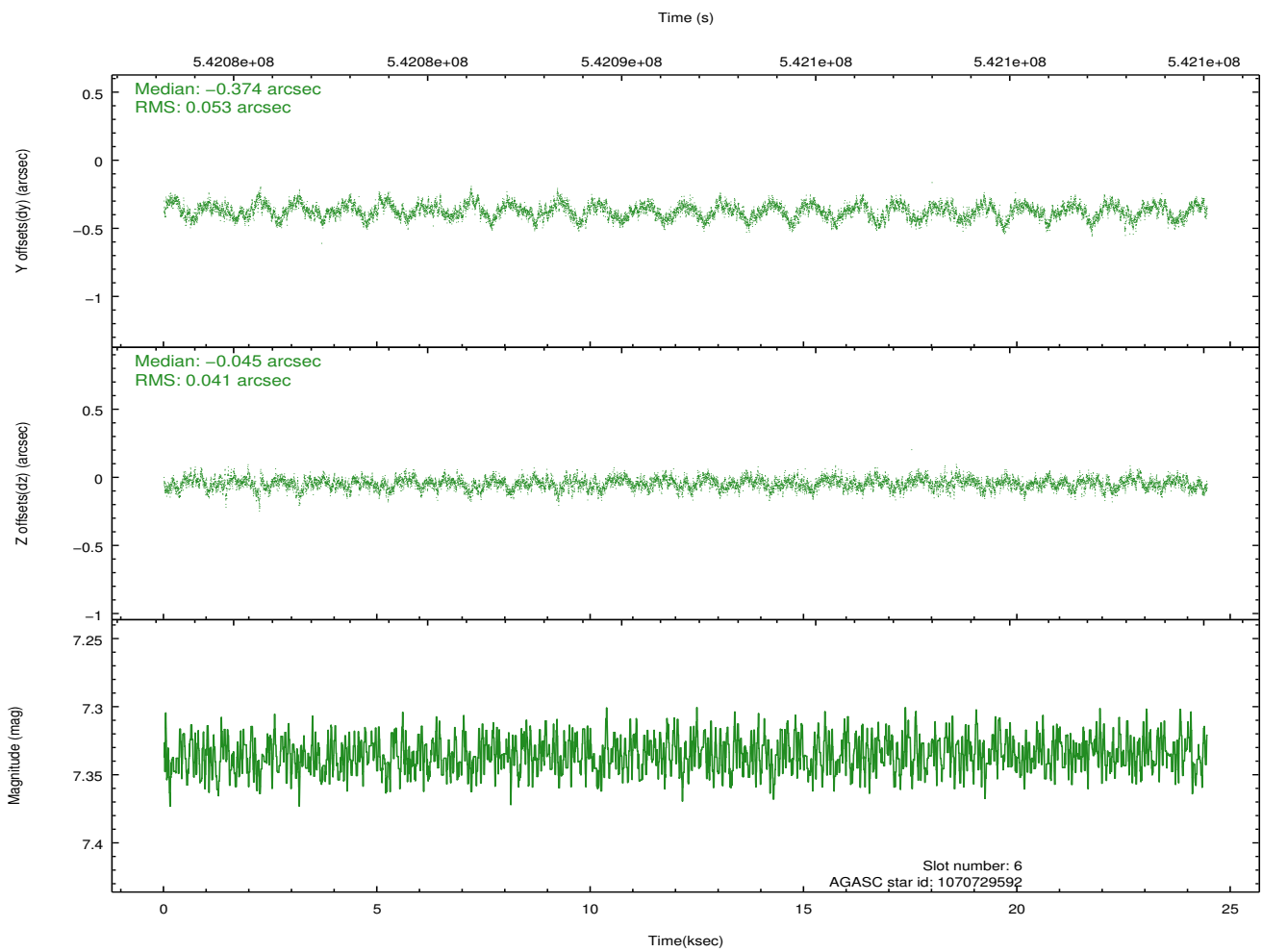
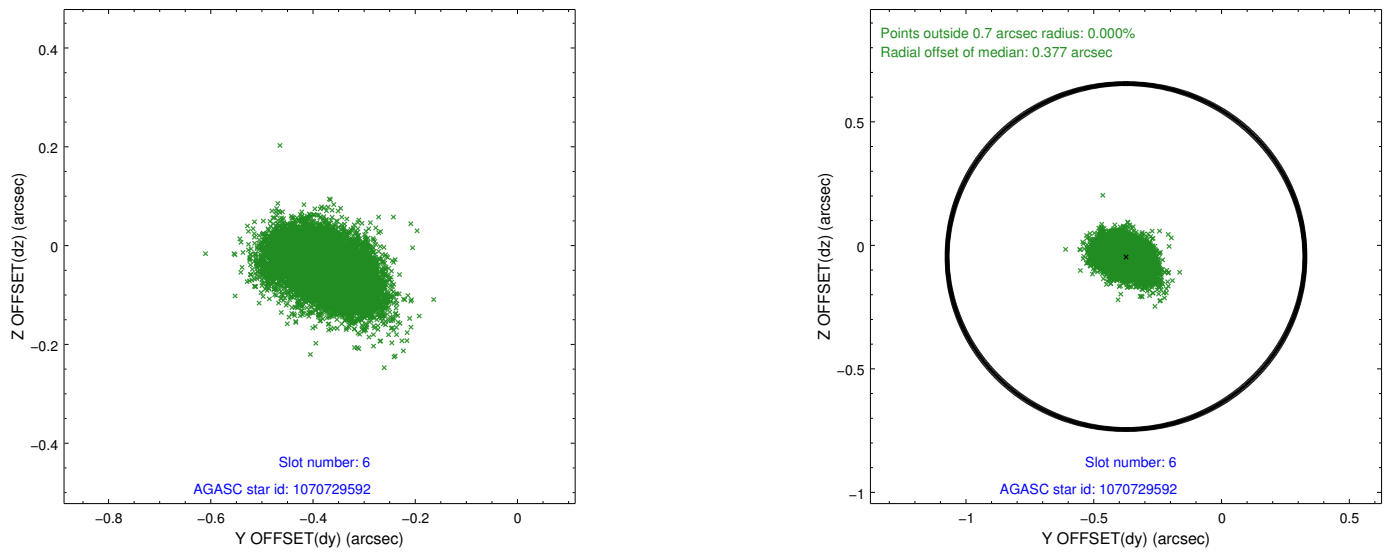
2.4.3 Slot 5



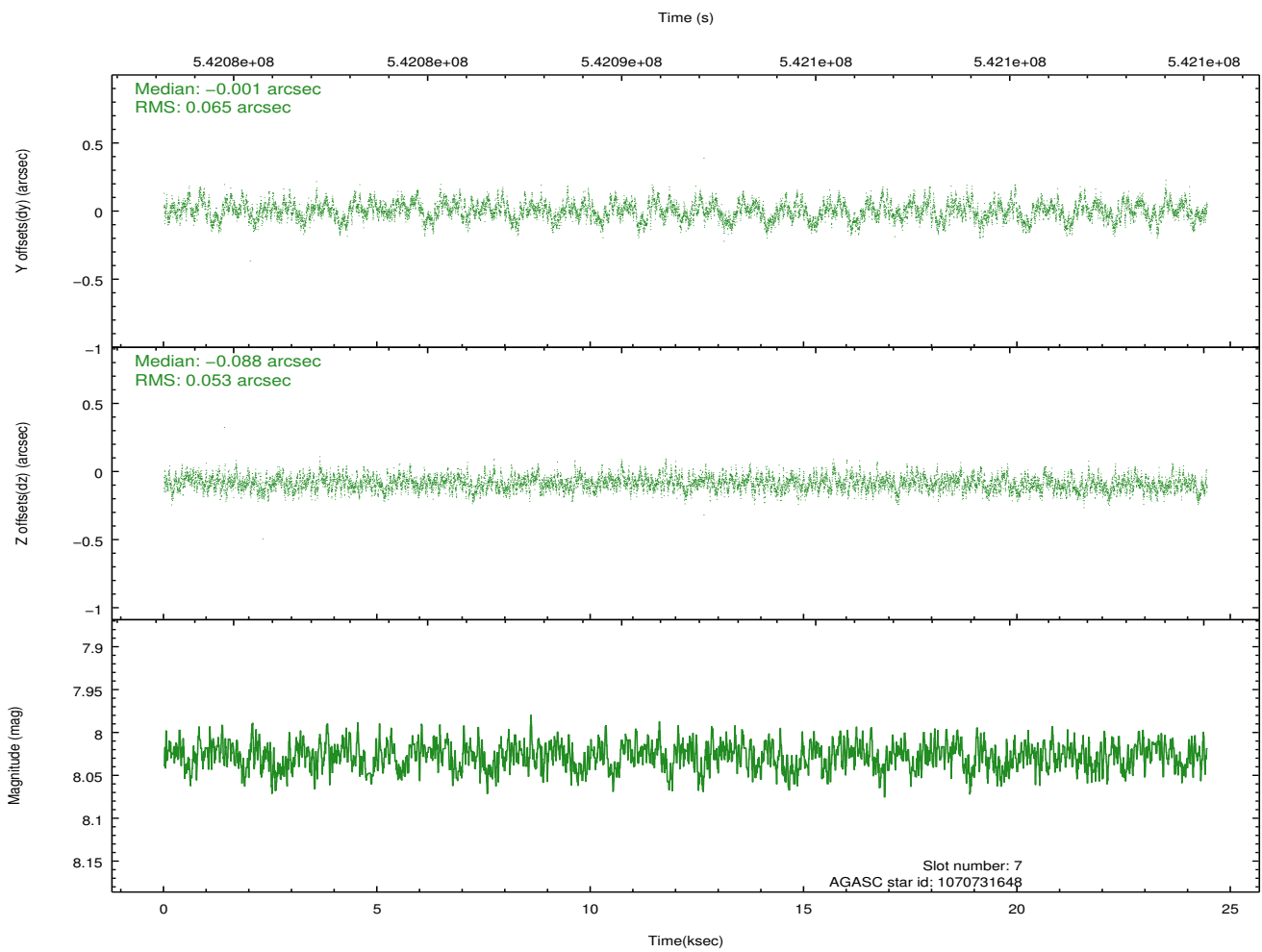
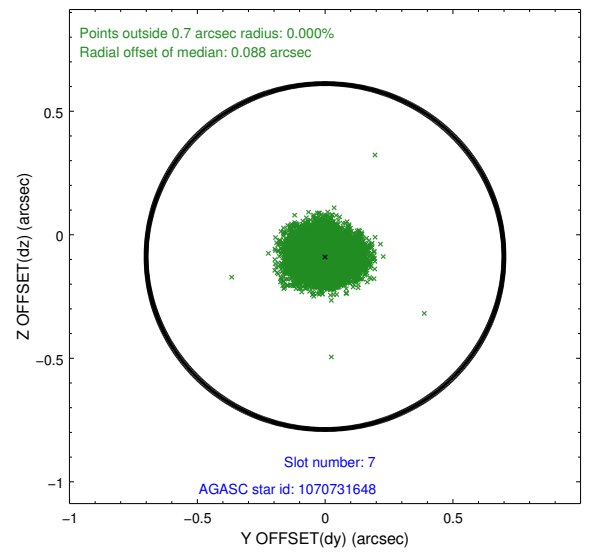
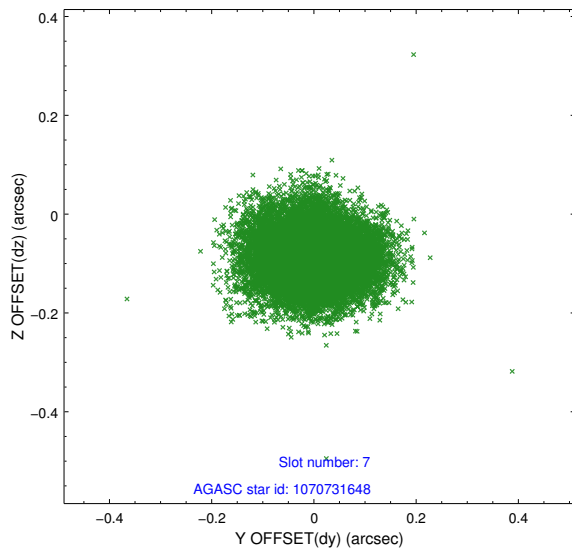
Time (s)



2.4.4 Slot 6

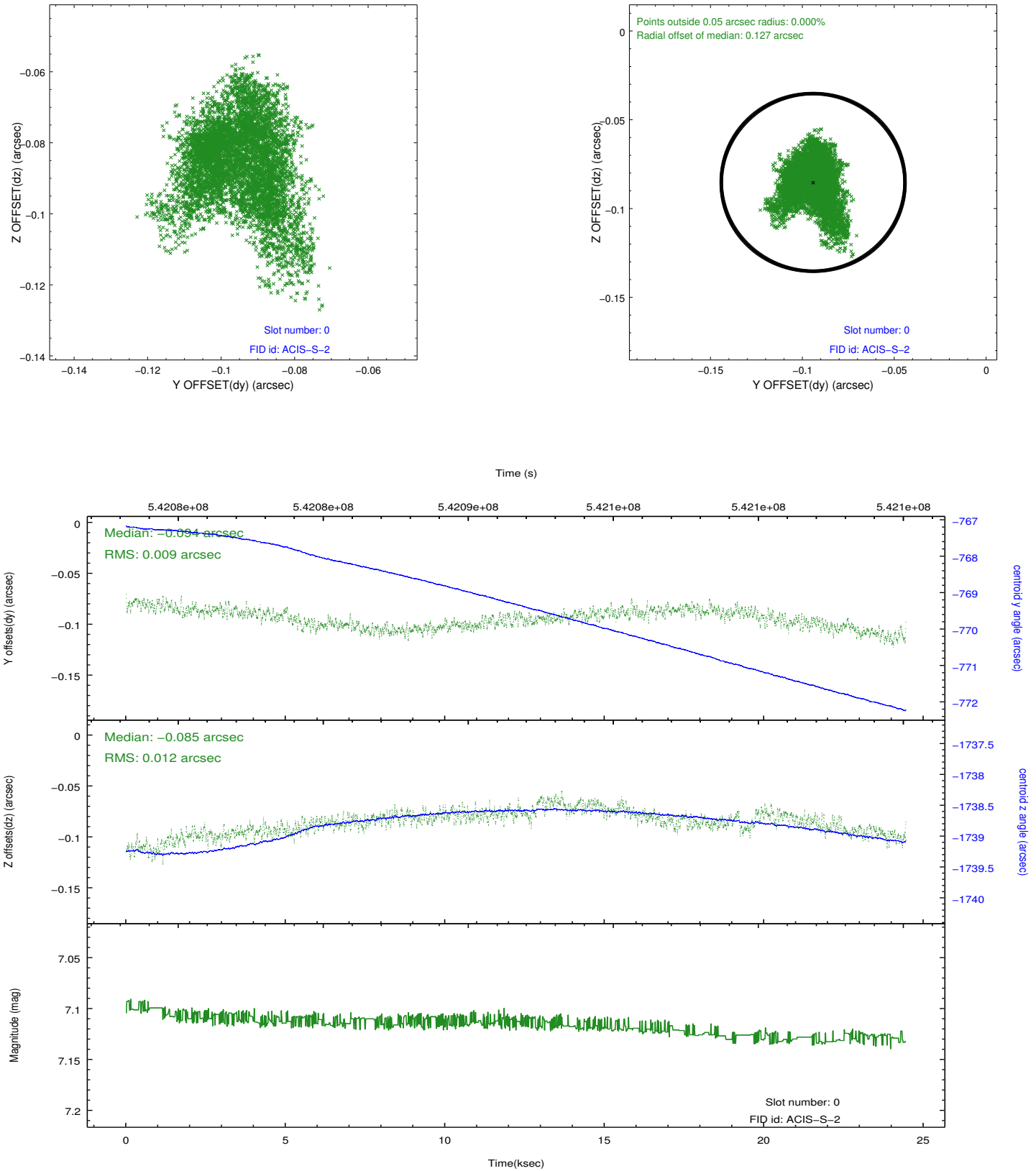


2.4.5 Slot 7

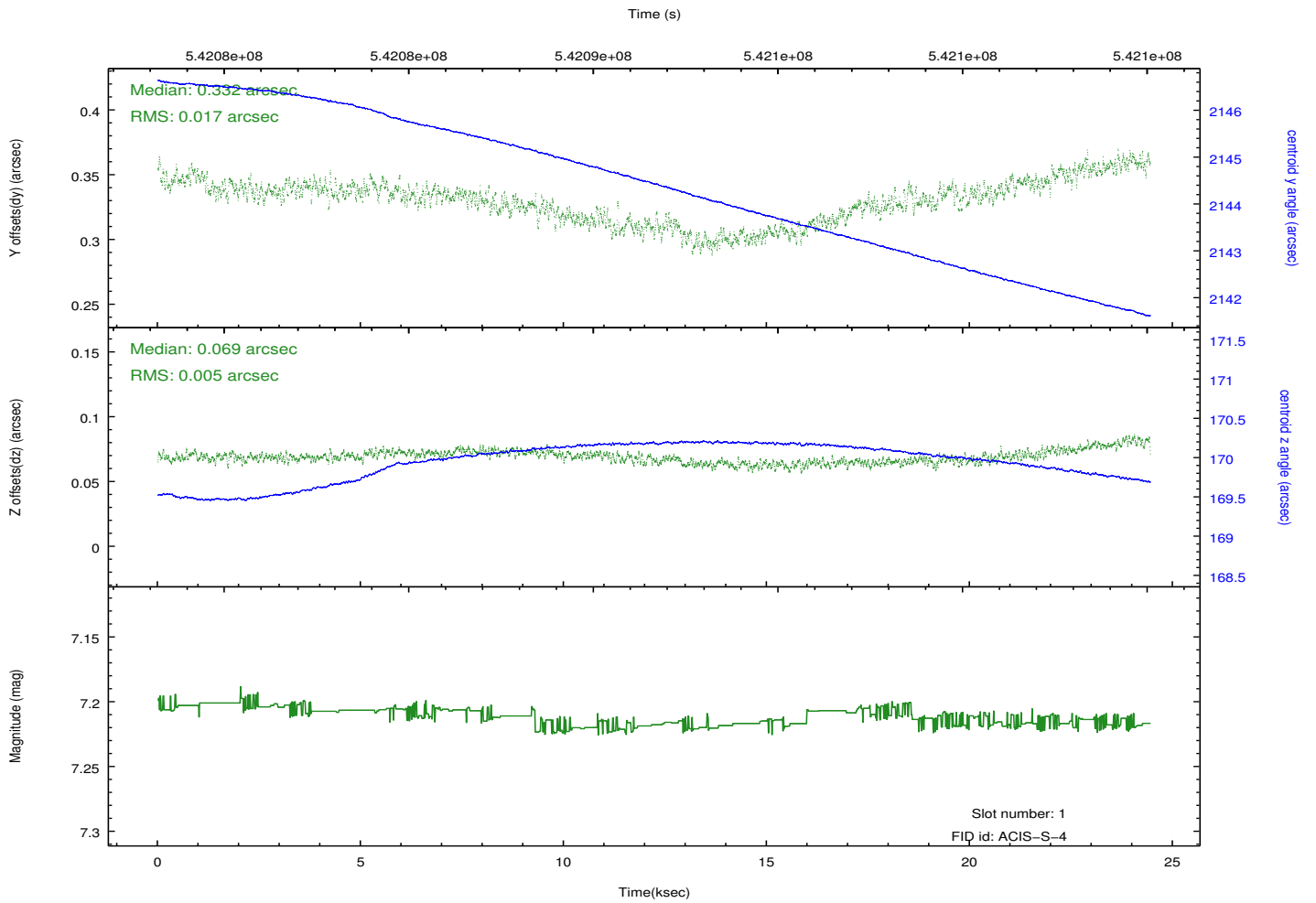
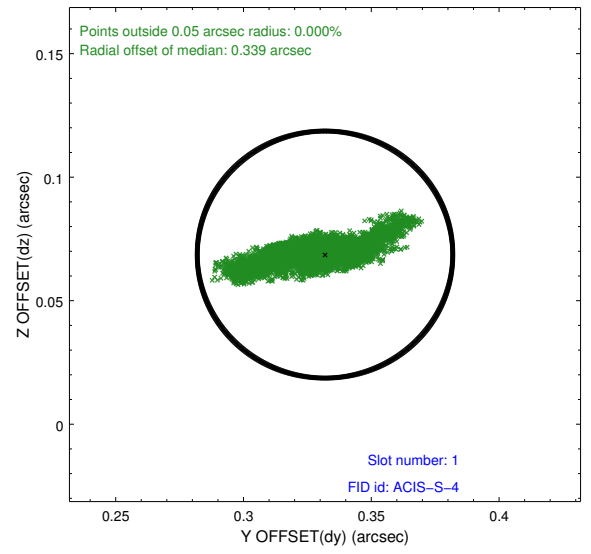
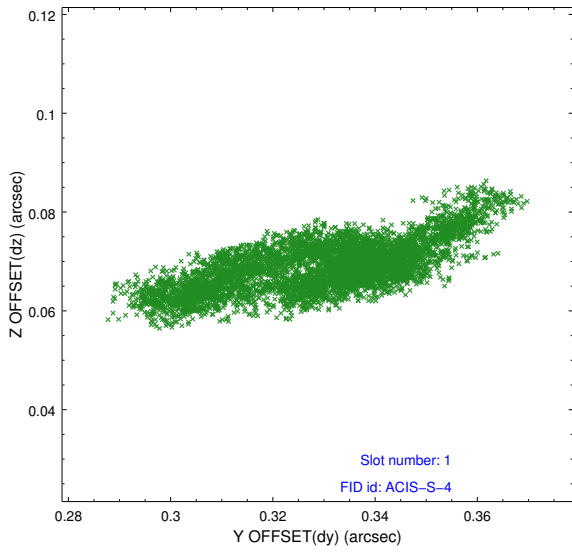


2.5 FID Slots

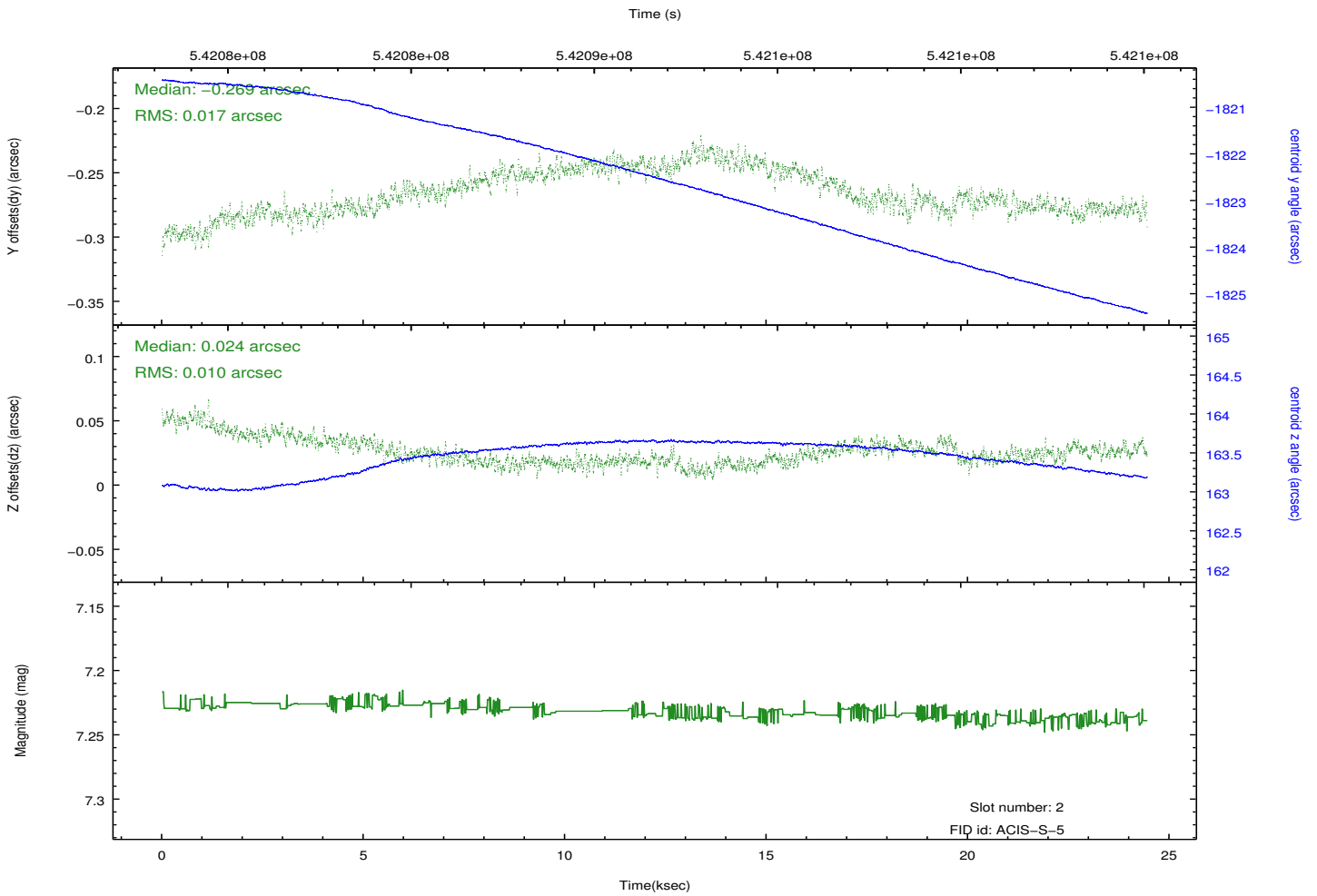
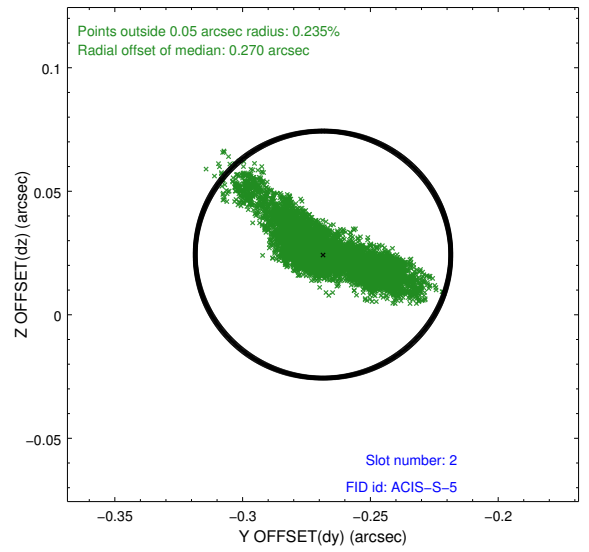
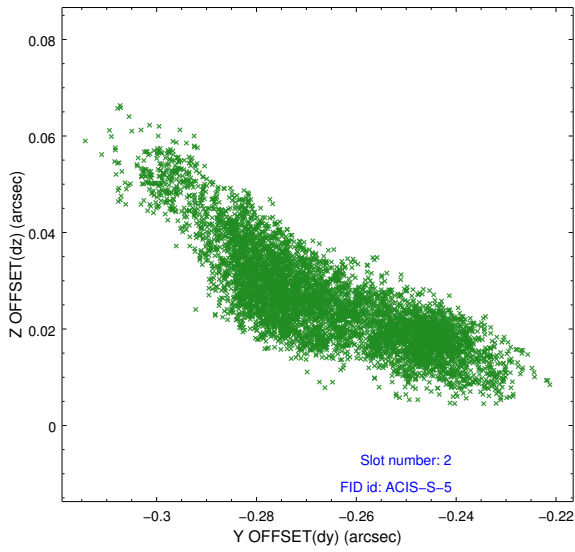
2.5.1 Slot 0



2.5.2 Slot 1



2.5.3 Slot 2

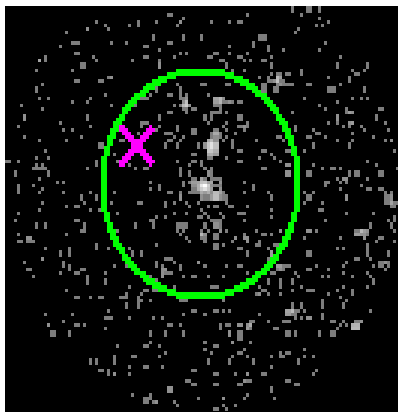


3 Gratings

3.1 HEG Arm



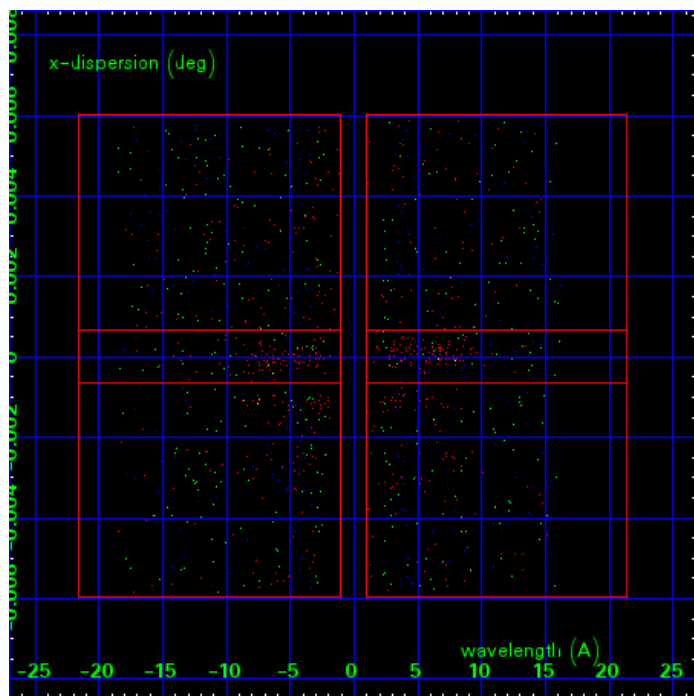
HEG Order Sort 123



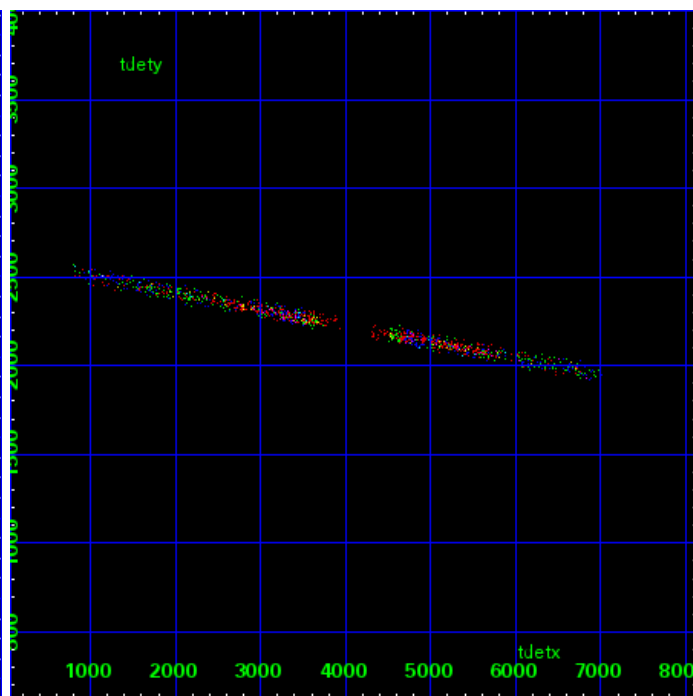
HEG Zero Order



HEG Order Sort ALL

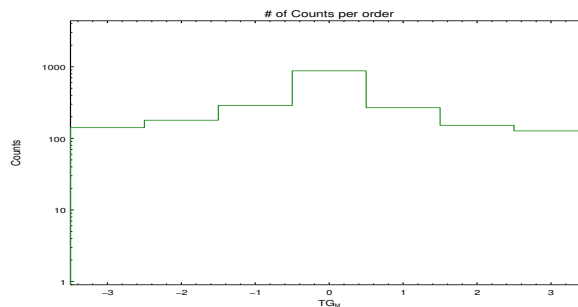


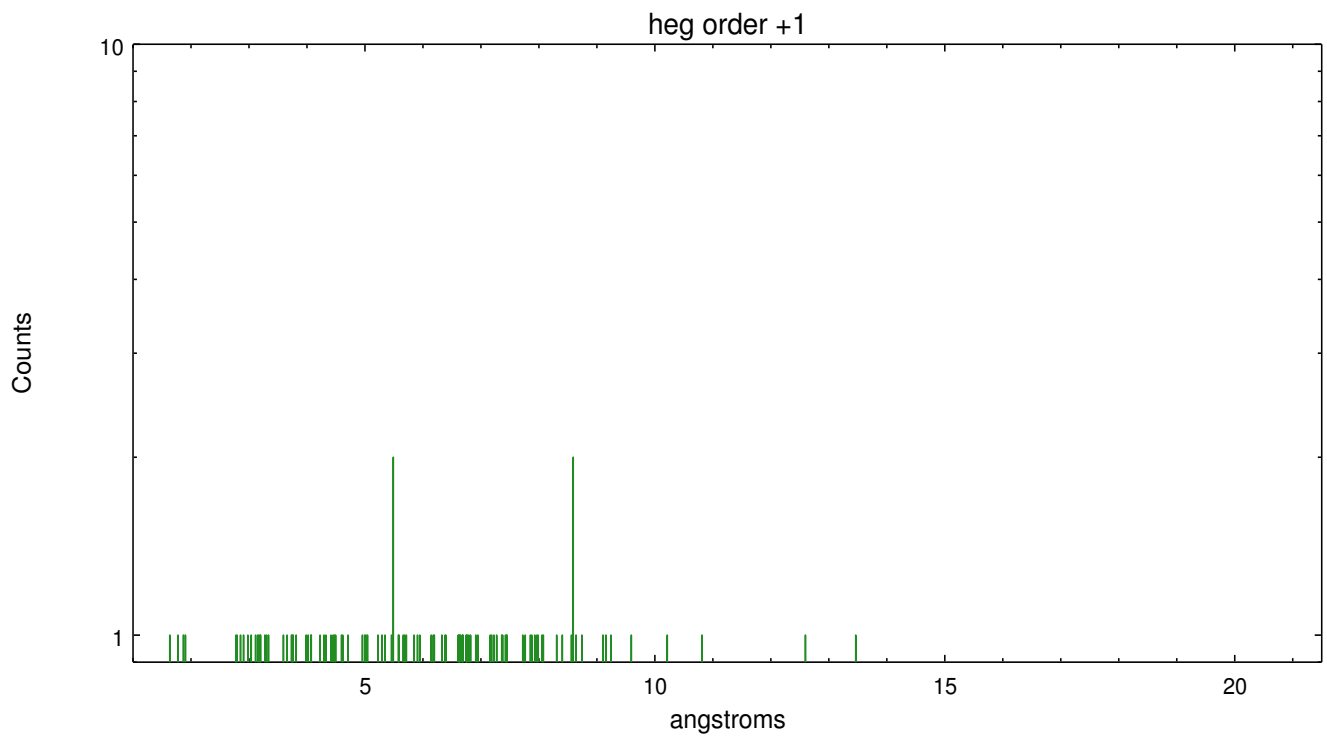
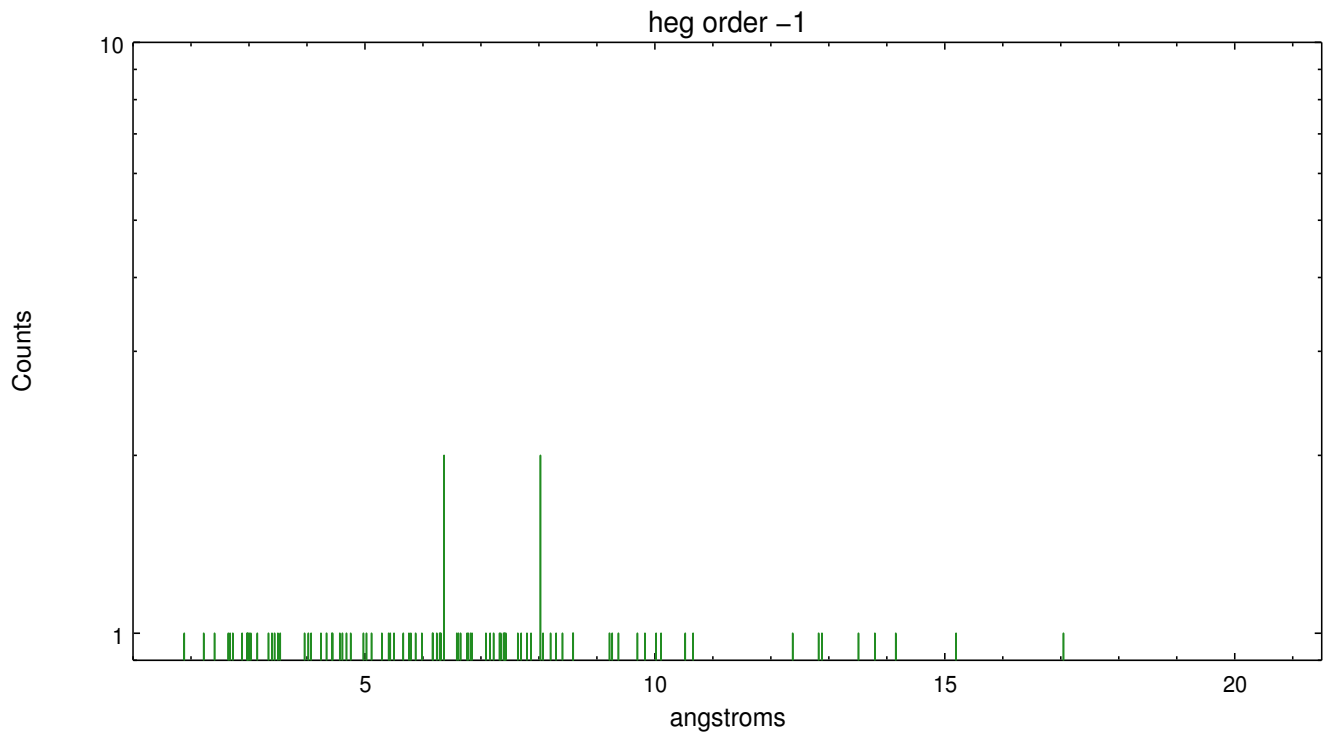
Spot Image HEG



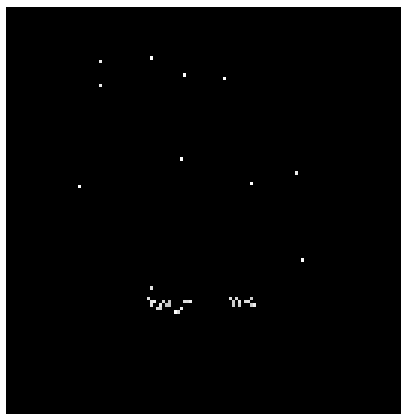
Full Detector HEG

	order -3	order -2	order -1	order 0	order 1	order 2	order 3
Events	141	179	288	877	268	152	127

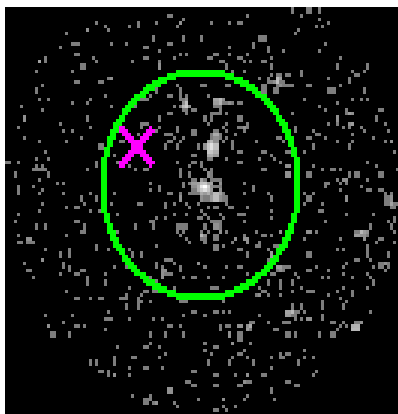




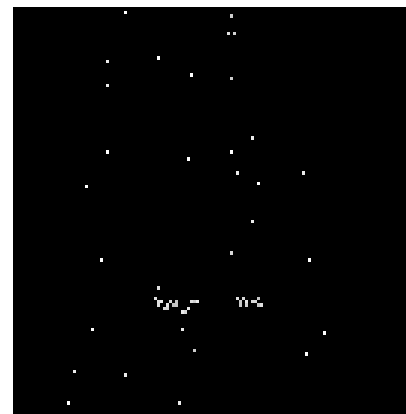
3.2 MEG Arm



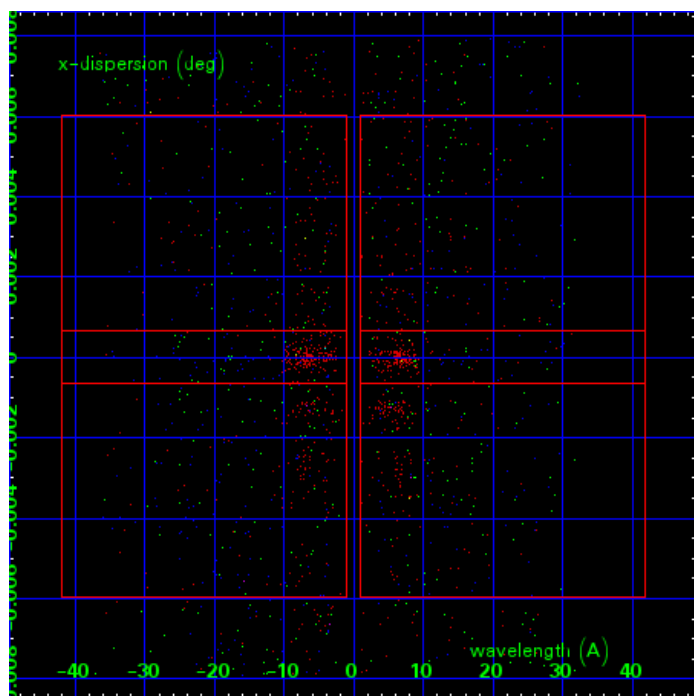
MEG Order Sort 123



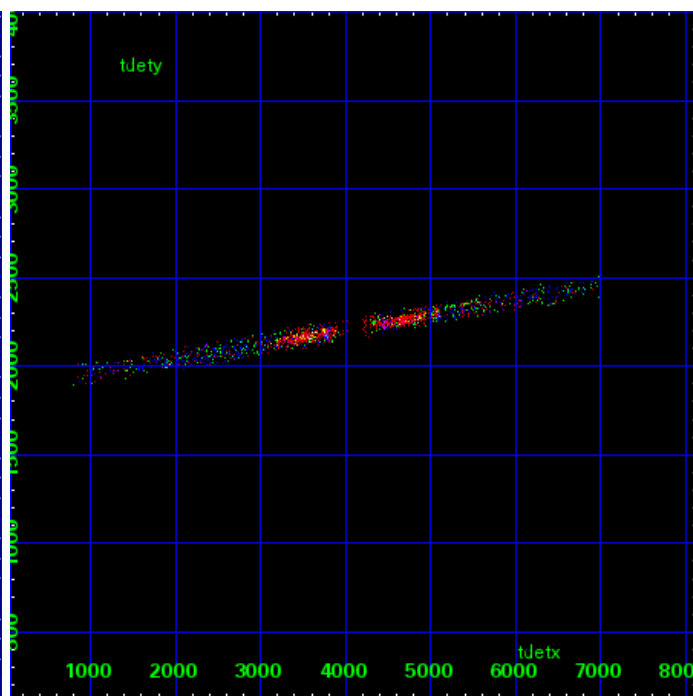
MEG Zero Order



MEG Order Sort ALL

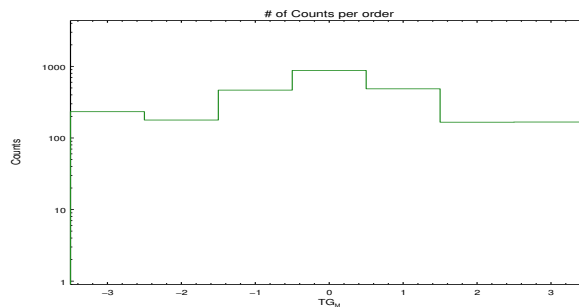


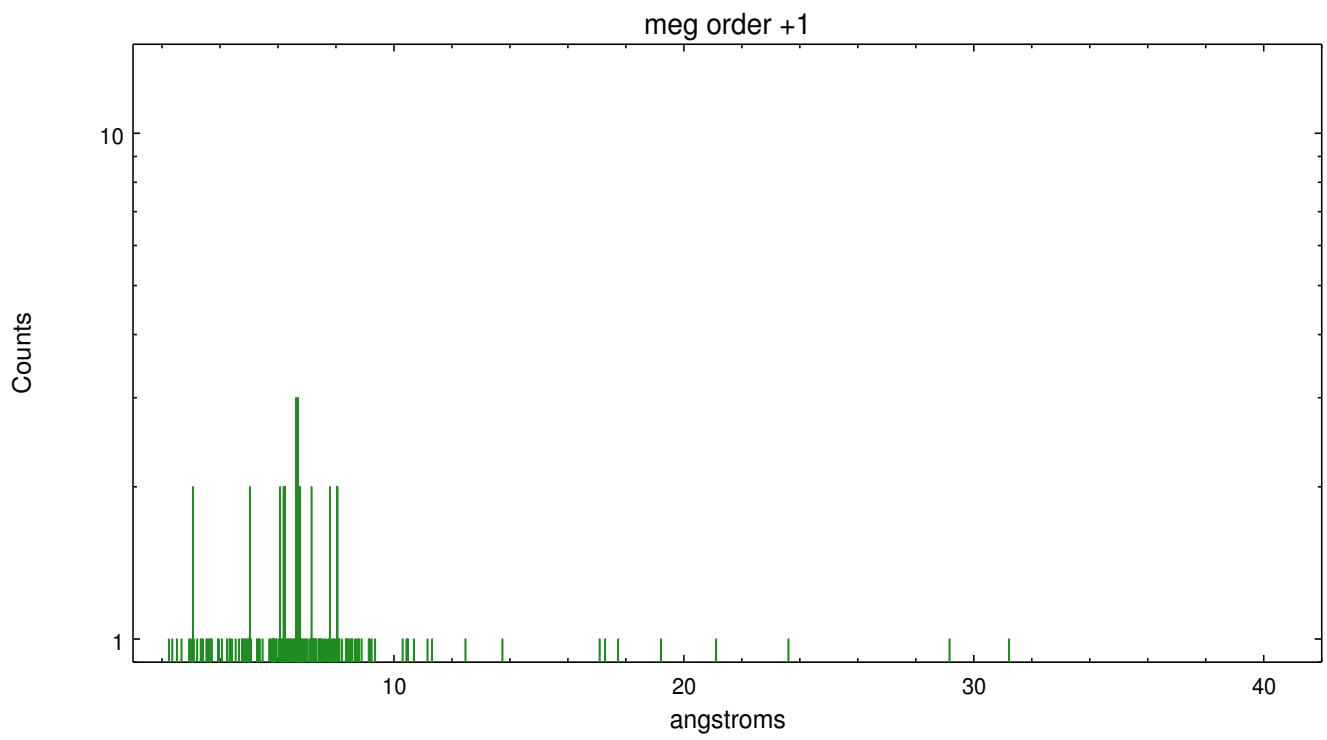
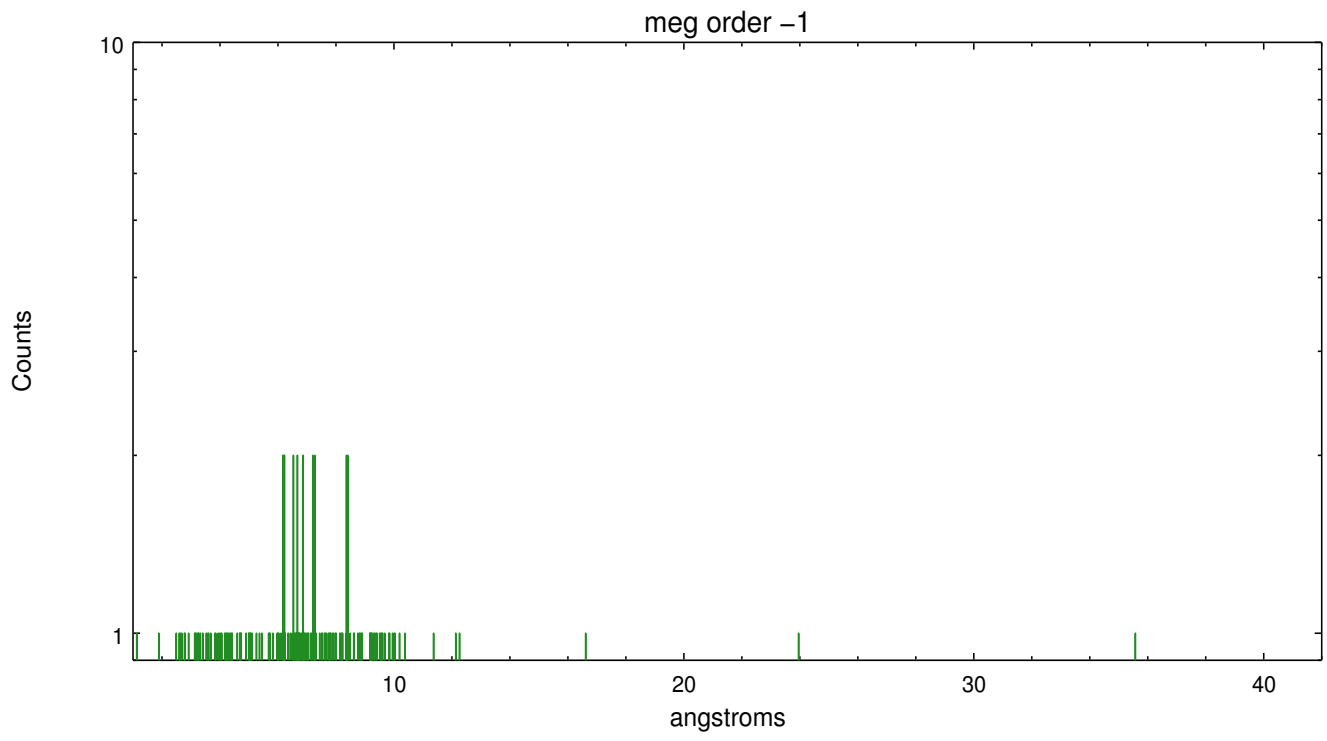
Spot Image MEG



Full Detector MEG

	order -3	order -2	order -1	order 0	order 1	order 2	order 3
Events	233	178	466	877	486	166	167





A Summary

A.1 Status

V&V Scientist	David Huenemoerder
V&V Date (YYYY-MM-DD)	2015.03.12
V&V Edition	1
V&V Disposition and Status	OK
V&V Charge Time	23.928937931299

A.2 Comments